

ARIZONA

MOTOR VEHICLE CRASH FACTS

2008



2008 Motor Vehicle Crash Facts for the State of Arizona

Prepared by:
The Arizona Department of Transportation
Motor Vehicle Division

Publication Date: June 25, 2009



This publication is an annual statistical review of the motor vehicle crashes in the State of Arizona for the calendar year 2008. The results are compiled from Arizona Traffic Accident Reports submitted to the Arizona Department of Transportation by state, county, city, tribal, and other law enforcement agencies. Specific inquiries regarding the data in this report should be directed to:

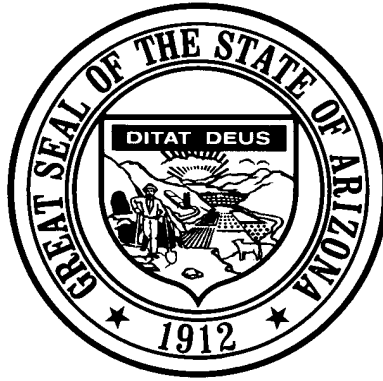
The Arizona Department of Transportation
Motor Vehicle Division
Traffic Records Section
206 S. 17th Ave. MD 064R
Phoenix, AZ 85007

E-mail: azcrashfacts@azdot.gov

Phone: (602) 712-6259

In order to provide the most current information, preliminary data is utilized when necessary. For this reason, previous or future reports may differ slightly and we encourage you to refer to the latest issue of Motor Vehicle Crash Facts.

This issue as well as previous issues of this publication may be viewed and downloaded from ADOT's Web Site at:
<http://www.azdot.gov/mvd/Statistics/crash/index.asp>



Janice K. Brewer
Governor

Arizona Department of Transportation

John S. Halikowski
Director

Stacey K. Stanton
Motor Vehicle Division
Director

State Transportation Board

Delbert Householder – District 4
Chairman

Robert Montoya – District 5
Vice Chairman

Members

Felipe Andres Zubia – District 1

Victor Flores – District 1

S.L. Schorr – District 2

Barbara (Bobbie) Ann Lundstrom – District 3

William (Bill) J. Feldmeier – District 6

OVERVIEW

Section 1: – Highlights and Historical Trends1

Section 2: – Geographic Location.....9

Section 3: – Crash Descriptions17

Section 4: – Safety Devices23

Section 5: – Motor Vehicle and Driver Descriptions26

Section 6: – Alcohol Related Crashes.....32

Section 7: – Pedestrian and Pedalcyclist Crashes41

Section 8: – Motorcycle (MC) Crashes46

Acknowledgements55

2008 Arizona Crash Facts Summary

Table of Contents

Section 1: Highlights and Historical Trends.....	1
Arizona Crash Facts Summary and Comparison.....	2
Arizona at a Glance – 2008	2
Licensed Drivers, Motor Vehicle Registration and Crash History in Arizona	3
Historical Trends – Arizona and the United States	3
Statewide Economic Loss Due to Motor Vehicle Crashes	4
Average Economic Cost per Incident.....	4
Traffic Crashes in Arizona by Year.....	5
Victims of Motor Vehicle Crashes	6
Arizona’s 2008 Estimated Population	6
Victims of Motor Vehicle Crashes (Arizona Residents Only)	6
Vehicle Miles Traveled	7
Arizona vs. U.S. Fatality Rate	7
Traffic Fatalities by Geographic Region	7
Traffic Injuries by Geographic Region.....	7
Holiday Crash Statistics	8
Section 2: Geographic Location.....	9
Crash Severity by First Harmful Event Statewide.....	10
Crashes by County	10
Crash Severity by First Harmful Event in Urban Areas	11
Crash Severity by First Harmful Event in Rural Areas	11
Analysis by Jurisdiction	12
Total Fatalities by County for 2007 and 2008.....	15
Urban and Rural Crashes by Day of Week.....	16
Urban and Rural Fatal Crashes by Day of Week.....	16
All Urban and Rural Crashes vs. Urban and Rural Fatal Crashes by Month.....	16
Section 3: Crash Descriptions	17
Manner of Collision in Multi-Vehicle Crashes	18
Unusual Road Conditions.....	18
Lighting Conditions.....	18
Weather Conditions.....	19
Road Surface Type.....	19
Road Surface Conditions.....	19
Road Grade.....	19
All Crashes vs. Fatal Crashes by Time of Day - Weekdays	20
All Crashes vs. Fatal Crashes by Time of Day - Weekends	20
Crashes by Day of Week	21
Fatal Crashes by Day of Week	21
All Crashes vs. Fatal Crashes by Month	21
Crashes by Hour and Day of Week	22
Section 4: Safety Devices	23
Child Restraint Usage (less than five years old).....	24
Driver Restraint Usage	24
Front-Seat Passenger Restraint Usage.....	25
Rear-Seat Passenger Restraint Usage.....	25
Section 5: Motor Vehicle and Driver Descriptions	26
Arizona Motor Vehicle Registrations.....	27
Motor Vehicle Crash Involvement by Vehicle Type.....	27
Hit and Run Drivers Involved in Crashes.....	28
Gender of Drivers Involved in Crashes	28

2008 Arizona Crash Facts Summary

License Status of Drivers Involved in Crashes	28
Passengers Killed and Injured by Age and Gender	28
Drivers and Occupants Killed and Injured by Vehicle Type	29
Drivers Killed and Injured by Age and Gender	29
Licensed Drivers in Arizona by Age.....	30
Driver Involvement by Age	30
Driver Errors	31
Driver Physical Condition.....	31
Section 6: Alcohol Related Crashes.....	32
Economic Loss Due to Alcohol Related Crashes in Arizona for 2008	33
Alcohol Related Crash History	33
Manner of Collision in Alcohol Related Crashes.....	33
Alcohol Related Crashes by First Harmful Event.....	34
Alcohol Related Crashes by Vehicle Type	34
Lighting Conditions in Alcohol Related Crashes.....	35
Road Surface Conditions in Alcohol Related Crashes.....	35
Gender of Drivers Involved in Alcohol Related Crashes.....	35
Driver Involvement by Age in Alcohol Related Crashes.....	36
When Alcohol Related Crashes Occurred in 2008.....	36
Restraint Usage for Drinking Drivers	36
Persons Killed and Injured in Alcohol Related Crashes	37
Alcohol Related Crashes by County	37
All Alcohol Related Crashes vs. Fatal Alcohol Related Crashes by Day of Week.....	38
All Alcohol Related Crashes vs. Fatal Alcohol Related Crashes by Month	38
All Alcohol Related Crashes vs. Fatal Alcohol Related Crashes - Weekdays	39
All Alcohol Related Crashes vs. Fatal Alcohol Related Crashes - Weekends	39
Alcohol Related Crashes by Hour and Day of Week.....	40
Section 7: Pedestrian and Pedalcyclist Crashes	41
Pedestrians Killed and Injured By Age and Gender.....	42
Pedestrian Crashes by Geographic Location.....	42
Pedestrian Crash History.....	42
Pedestrians Killed by Age and Action	43
Pedestrians Injured by Age and Action.....	43
Pedestrian Physical Condition in Motor Vehicle Crashes.....	43
Lighting Conditions in Pedestrian Crashes	44
Weather Conditions in Pedestrian Crashes	44
Pedalcyclists Killed and Injured by Age and Gender.....	44
Pedalcycle Crashes by Geographic Location	45
Pedalcycle Crash History.....	45
Lighting Conditions in Pedalcyclist Crashes.....	45
Weather Conditions in Pedalcyclist Crashes.....	45
Section 8: Motorcycle (MC) Crashes	46
MC Fatalities by Year.....	47
MC Registrations in Arizona	47
Fatality Rate per Registered MC.....	47
Percent of MC Crashes to All Crashes.....	47
MC Crashes by First Harmful Event.....	48
Lighting Conditions in MC Crashes	48
Road Surface Conditions in MC Crashes.....	48
MC Crashes by Geographic Location.....	49
Operator Involvement by Age in MC Crashes	49
MC Operator Physical Condition.....	49
MC Operators Involved in Fatal Crashes by License Status.....	50
MC Operator's Helmet Use	50

2008 Arizona Crash Facts Summary

MC Passenger's Helmet Use	50
MC Operators and Passengers Killed and Injured.....	51
MC Operator Errors	51
All MC Crashes vs. Fatal MC Crashes by Time of Day - Weekdays.....	52
All MC Crashes vs. Fatal MC Crashes by Time of Day - Weekends.....	52
All MC Crashes vs. Fatal MC Crashes by Day of Week.....	53
Alcohol Related MC Crashes vs. Fatal Alcohol Related MC Crashes by Day of Week.....	53
MC Crashes by Hour and Day of Week.....	54
Acknowledgements	55

2008 Arizona Crash Facts Summary

BREAKDOWN OF ALL CRASHES IN ARIZONA

TOTAL	119,588
FATAL	842
INJURY	37,180
PROPERTY DAMAGE ONLY	81,566
RURAL	23,113
URBAN	96,475
ALCOHOL RELATED	6,757
PEDESTRIAN	1,524
PEDALCYCLE	1,989
MOTORCYCLE	3,531
SINGLE VEHICLE	24,161
MULTI-VEHICLE	95,427

BREAKDOWN OF FATAL CRASHES IN ARIZONA

TOTAL	842
ALCOHOL RELATED	294
URBAN	391
RURAL	451
SINGLE VEHICLE	499
MULTI-VEHICLE	343
ALCOHOL RELATED SINGLE VEHICLE	198
ALCOHOL RELATED MULTI-VEHICLE	96

BREAKDOWN OF PERSONS KILLED AND INJURED

TYPE	KILLED	INJURED
IN ALL CRASHES	937	56,009
IN ALCOHOL RELATED CRASHES	324	4,733
IN URBAN CRASHES	414	44,316
IN RURAL CRASHES	523	11,693
USING SAFETY DEVICE	271	42,315
NOT USING SAFETY DEVICE	333	4,335
DRIVERS AGE 24 OR YOUNGER	114	9,025
DRINKING DRIVERS AGE 24 OR YOUNGER	49	877

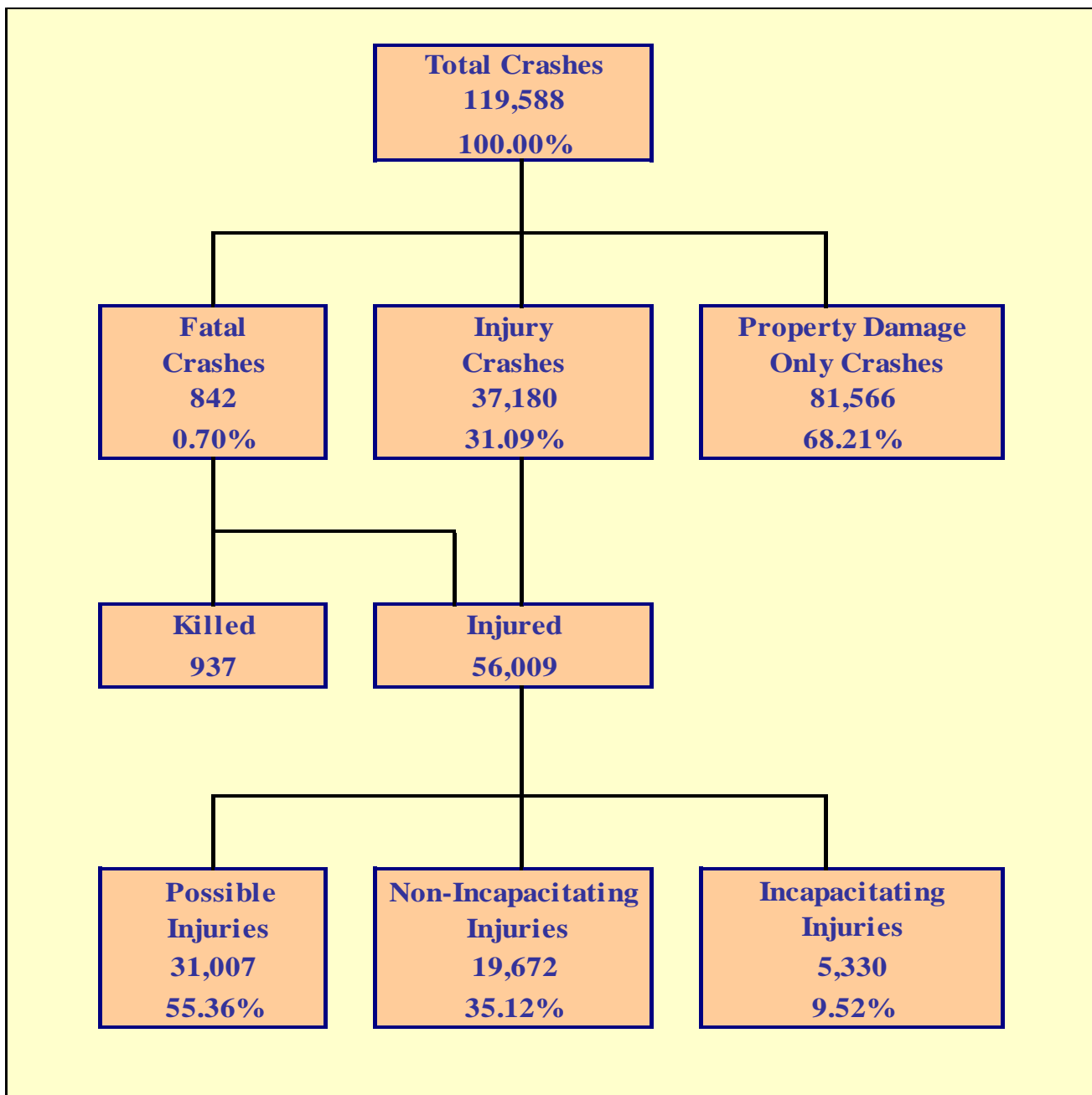
BREAKDOWN OF CRASHES BY TIME

PEAK MONTH FOR ALL CRASHES	FEBRUARY
PEAK DAY FOR ALL CRASHES	FRIDAY
PEAK HOUR FOR ALL CRASHES	4 PM - 5 PM
PEAK MONTH FOR FATAL CRASHES	MARCH
PEAK DAY FOR FATAL CRASHES	SATURDAY
PEAK HOUR FOR FATAL CRASHES	5 PM - 6 PM

OTHER FACTS

MOST COMMON MANNER OF COLLISION	Rear-End
MOST COMMON MANNER OF COLLISION IN FATAL CRASHES	Angle
MOST COMMON FIRST HARMFUL EVENT (OTHER THAN COLLISION WITH OTHER MOTOR VEHICLE)	Fixed Object
MOST COMMON DRIVER VIOLATION	Speed too fast for conditions

THIS PAGE LEFT BLANK FOR PRINTING PURPOSES



Section 1: – Highlights and Historical Trends

Table 1 - 1

Arizona Crash Facts Summary and Comparison

Category	2007	2008	Percent Change
Total Crashes	141,092	119,588	-15.24%
Total Fatalities	1,071	937	-12.51%
Total Injuries	66,018	56,009	-15.16%
Alcohol Related Fatalities	397	324	-18.39%
Alcohol Related Injuries	5,531	4,733	-14.43%
Urban Fatalities	479	414	-13.57%
Urban Injuries	52,740	44,316	-15.97%
Rural Fatalities	592	523	-11.66%
Rural Injuries	13,278	11,693	-11.94%
MC Operator and Passenger Fatalities	135	140	3.70%
MC Operator and Passenger Injuries	2,944	3,004	2.04%
Pedestrians Fatalities	157	124	-21.02%
Pedestrians Injuries	1,540	1,423	-7.60%
Pedalcyclist Fatalities	21	19	-9.52%
Pedalcyclist Injuries	1,605	1,682	4.80%
Millions of vehicle miles traveled (VMT)	62,961	61,159	-2.86%
Fatalities per 100 million VMT	1.70	1.53	-9.93%
Injuries per 100 million VMT	104.86	91.58	-12.66%

Arizona at a Glance – 2008

- Approximately **2.57** persons were killed each day.
- One person was killed every **9.36** hours.
- There were **153.34** persons injured every day.
- One person was injured every **9.39** minutes.
- Alcohol Related crashes accounted for **5.65%** of all crashes and **34.92%** of all fatal crashes.
- Of all alcohol related crashes, **78.45%** occurred in Urban areas and **21.55%** occurred in Rural areas, while **51.70%** of all alcohol related fatal crashes occurred in Urban areas and **48.30%** occurred in Rural areas.
- Single vehicle crashes accounted for **20.20%** of all crashes and **59.26%** of all fatal crashes.
- Of all Pedestrian crashes, **7.94%** were fatal while **0.96%** of Pedalcycle crashes were fatal.
- Crashes which occurred during daylight hours (6:00 a.m. to 6:00 p.m.) accounted for **72.9%** of all crashes.
- Motor vehicle crashes resulted in **\$2.855** billion in economic losses to Arizona.
- Children age 14 and younger accounted for **33** fatalities and **4,510** injuries in motor vehicle crashes.

The Nation In 2008

The population of the United States was estimated at **304,059,724**.

Estimated vehicle miles traveled totaled **2.926 billion** miles.

An estimated **2,346,000** persons were injured.

An estimated **37,261** persons were killed in motor vehicle crashes in the United States.

Table 1 - 2

**Licensed Drivers, Motor Vehicle Registration
and Crash History in Arizona**

Calendar Year	Total Crashes	Fatal Crashes	Injury Crashes	Property Damage Only Crashes	Total Persons Killed	Total Persons Injured	Total Licensed Drivers	Total Registered Vehicles
2004	138,899	998	46,789	91,112	1,159	73,693	3,784,365	4,364,857
2005	140,574	1,049	45,826	93,699	1,193	71,083	3,963,005	4,556,448
2006	143,093	1,125	45,271	96,697	1,300	69,814	4,091,789	4,748,957
2007	141,092	952	43,530	96,610	1,071	66,018	4,212,393	4,848,162
2008	119,588	842	37,180	81,566	937	56,009	4,360,711	4,842,188

Table 1 - 3

Historical Trends – Arizona and the United States

Calendar Year	U.S. Fatality Rate*	Arizona Fatality Rate	Arizona Traffic Fatalities	Estimated Motor Vehicle Miles Traveled	Arizona Fatal Crash Rate
2004	1.44	2.02	1,159	57,260	1.74
2005	1.46	2.03	1,193	58,796	1.78
2006	1.42	2.08	1,300	62,485	1.80
2007	1.36	1.70	1,071	62,961	1.51
2008	1.27	1.53	937	61,159	1.38

Vehicle miles traveled are shown in million miles and rates per 100 million miles

*Source for U.S. Fatality Rate: www.nhtsa.gov

Section 1: – Highlights and Historical Trends

Statewide Economic Loss Due to Motor Vehicle Crashes

Fatalities	\$1,079,986,200
Incapacitating Injuries	\$353,379,000
Non-Incapacitating Injuries	\$421,374,240
Possible Injuries	\$376,362,966
Property Damage Only	\$623,979,900
TOTAL	\$2,855,082,306

Table 1 - 4

Estimated Economic Loss by County

County	Cost of Traffic Crashes			
	Fatalities	Injuries	PDO	Total
Apache	\$ 51,867,000	\$ 11,330,466	\$ 3,220,650	\$ 66,418,116
Cochise	\$ 38,035,800	\$ 20,459,568	\$ 10,021,500	\$ 68,516,868
Coconino	\$ 58,782,600	\$ 35,504,160	\$ 24,281,100	\$ 118,567,860
Gila	\$ 24,204,600	\$ 14,171,166	\$ 5,255,550	\$ 43,631,316
Graham	\$ 9,220,800	\$ 3,980,550	\$ 1,767,150	\$ 14,968,500
Greenlee	\$ 3,457,800	\$ 2,104,260	\$ 336,600	\$ 5,898,660
La Paz	\$ 23,052,000	\$ 6,609,090	\$ 2,157,300	\$ 31,818,390
Maricopa	\$ 424,156,800	\$ 690,973,092	\$ 411,554,700	\$ 1,526,684,592
Mohave	\$ 65,698,200	\$ 40,530,414	\$ 15,062,850	\$ 121,291,464
Navajo	\$ 42,646,200	\$ 14,108,742	\$ 6,647,850	\$ 63,402,792
Pima	\$ 157,906,200	\$ 195,216,984	\$ 91,149,750	\$ 444,272,934
Pinal	\$ 93,360,600	\$ 38,949,312	\$ 16,715,250	\$ 149,025,162
Santa Cruz	\$ 10,373,400	\$ 6,345,420	\$ 3,779,100	\$ 20,497,920
Yavapai	\$ 47,256,600	\$ 40,447,794	\$ 17,633,250	\$ 105,337,644
Yuma	\$ 29,967,600	\$ 30,385,188	\$ 14,397,300	\$ 74,750,088
TOTALS	\$ 1,079,986,200	\$ 1,151,116,206	\$ 623,979,900	\$ 2,855,082,306

NOTE: Cost estimates are based on a 2% increase of the 2007 National Safety Council estimates of the average cost of motor vehicle crashes, deaths, and injuries. These costs are an estimate of wage and productivity losses, medical expenses, administrative expenses, motor vehicle damage, and employer costs. A description of the National Safety Council's current cost estimating procedures may be found in the Technical Appendix of *Injury Facts*[®]. Effective with the 1993 bulletin, the Council extensively revised its cost estimating procedures.

Table 1 - 5

Average Economic Cost per Incident

1.	Fatality	\$1,152,600
2.	Incapacitating Injury	\$66,300
3.	Non-Incapacitating Injury	\$21,420
4.	Possible Injury	\$12,138
5.	Property Damage Only	\$7,650

Traffic Crashes in Arizona by Year

Chart 1 - 1
Total Crashes

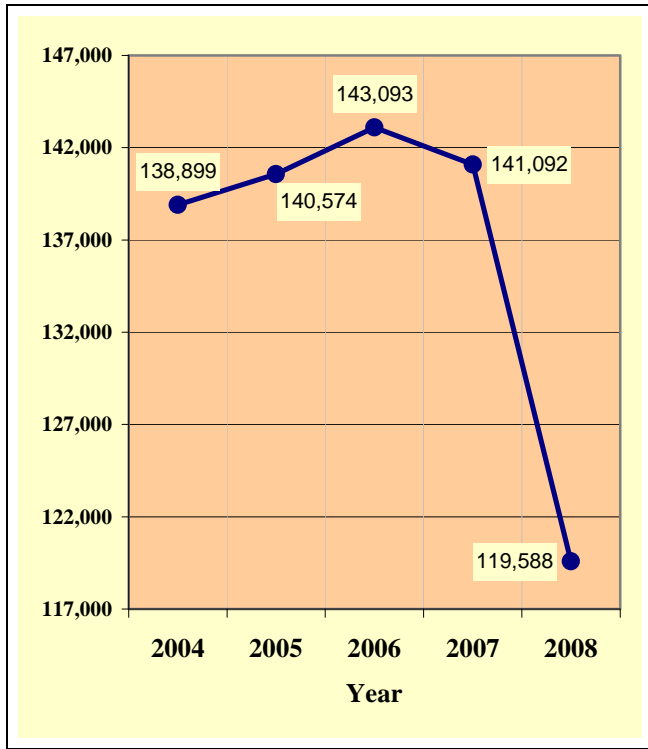


Chart 1 - 2
Fatal Crashes

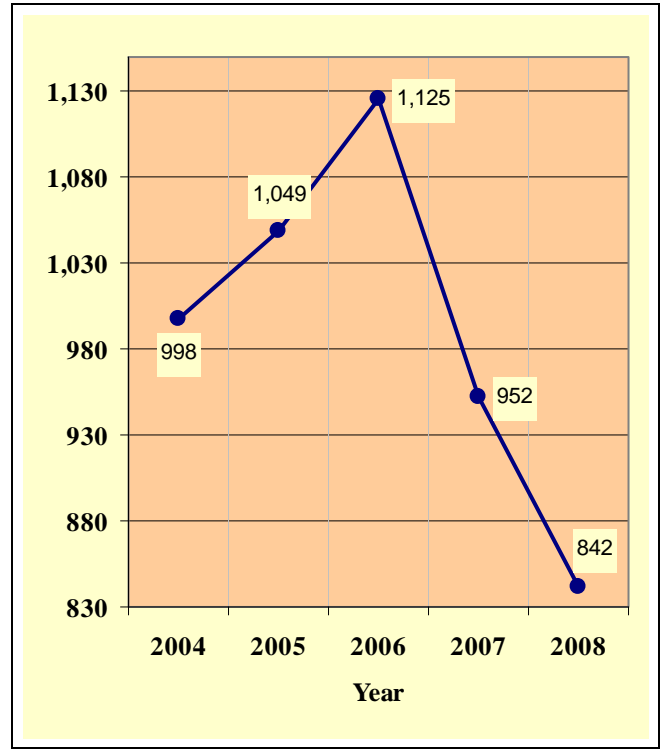


Chart 1 - 3
Injury Crashes

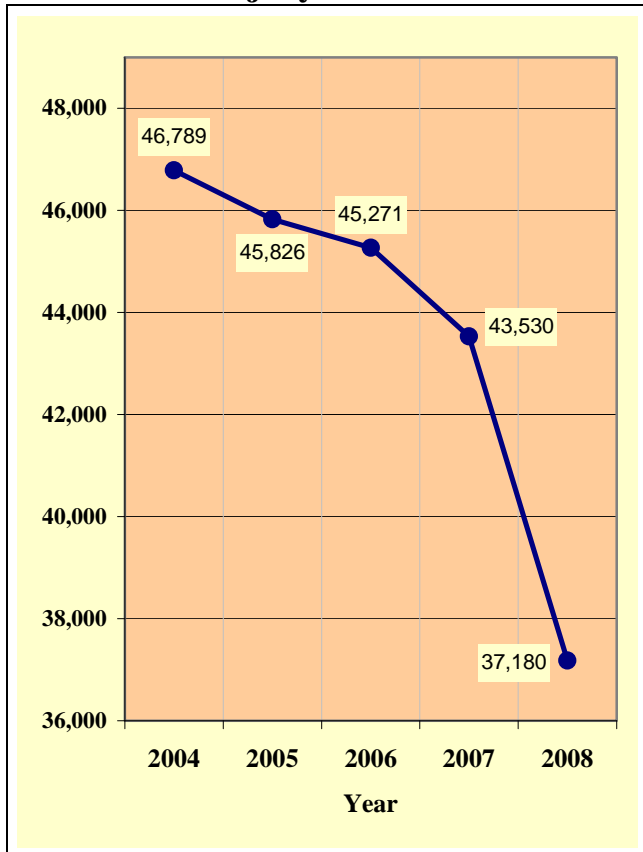
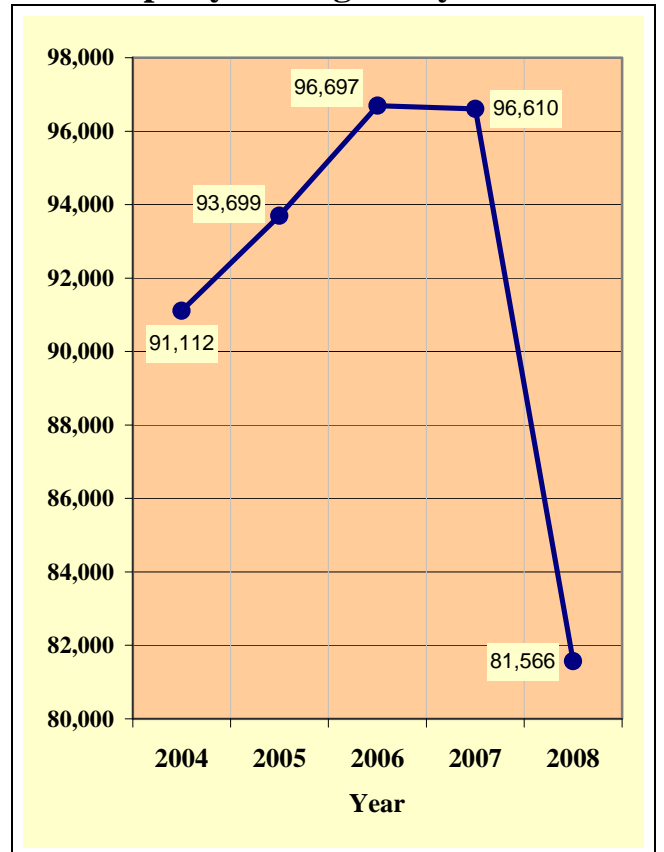


Chart 1 - 4
Property Damage Only Crashes



Section 1: – Highlights and Historical Trends

Table 1 - 6
Victims of Motor Vehicle Crashes

Age of Victim	Persons Killed			Persons Injured			
	Total	Male	Female	Total	Male	Female	Gender Unknown
0-4	8	4	4	1,193	604	589	0
5-9	8	3	5	1,441	705	735	1
10-14	17	10	7	1,876	954	922	0
15-19	81	53	28	7,065	3,271	3,792	2
20-24	136	105	31	7,418	3,638	3,780	0
25-34	148	104	44	10,346	5,007	5,339	0
35-44	129	100	29	8,384	4,045	4,339	0
45-54	149	97	52	7,568	3,567	4,001	0
55-64	124	92	32	5,247	2,438	2,809	0
65-74	66	43	23	2,598	1,218	1,380	0
75 & Older	69	49	20	1,831	828	1,003	0
Not Stated	2	2	0	1,042	492	488	62
TOTAL	937	662	275	56,009	26,767	29,177	65

Table 1 - 7

Arizona's 2008 Estimated Population

Race/Ethnic group	Population Percentage	Traffic Crash Fatality Percentage	Population Estimate*
White non-Hispanic	60.28%	56.67%	3,938,955
Hispanic or Latino	27.91%	24.02%	1,823,717
Black or African American	3.94%	3.22%	257,400
American Indian or Alaska Native	5.24%	14.71%	342,372
Asian or Pacific Islander	2.64%	0.92%	172,477
Ethnicity Unknown	N/A	0.46%	N/A
TOTAL	100.00%	100.00%	6,534,921

Source: Arizona Department of Health Services, Health Status and Vital Statistics Section.

*Population estimates for 2008 are available at <http://www.azdhs.gov/plan/menu/info/pop/pop08/pd08.htm>

Table 1 - 8

Victims of Motor Vehicle Crashes (Arizona Residents Only)**

Age of Victim	Total Killed	Male	Female	Detail Breakdown:					
				White non-Hispanic	Hispanic or Latino	Black or African American	American Indian or Alaska Native	Asian or Pacific Islander	Ethnicity Unknown
Less Than 1	0	0	0	0	0	0	0	0	0
1-14	35	17	18	11	16	1	5	1	1
15-19	76	50	26	35	30	1	9	1	0
20-44	369	279	90	170	105	17	69	6	2
45-64	252	177	75	171	41	9	31	0	0
65 or older	138	96	42	106	17	0	14	0	1
TOTAL	870	619	251	493	209	28	128	8	4

Source: Arizona Department of Health Services, Health Status and Vital Statistics Section.

**Includes victims of crashes occurring outside Arizona.

Section 1: – Highlights and Historical Trends

Chart 1 - 5
Vehicle Miles Traveled

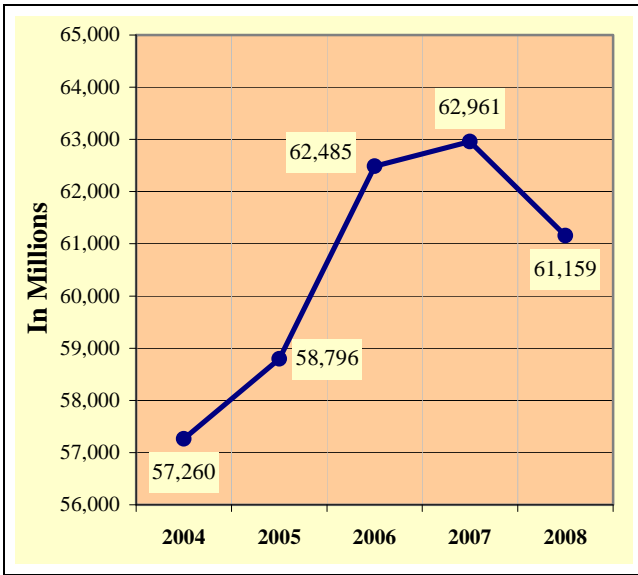
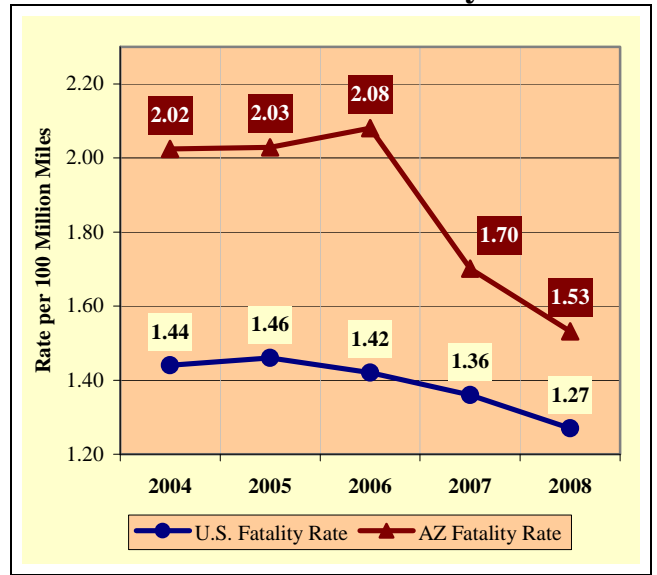


Chart 1 - 6
Arizona vs. U.S. Fatality Rate



Source: ADOT – Multimodal Planning Division – Data Bureau

Chart 1 - 7
Traffic Fatalities by Geographic Region

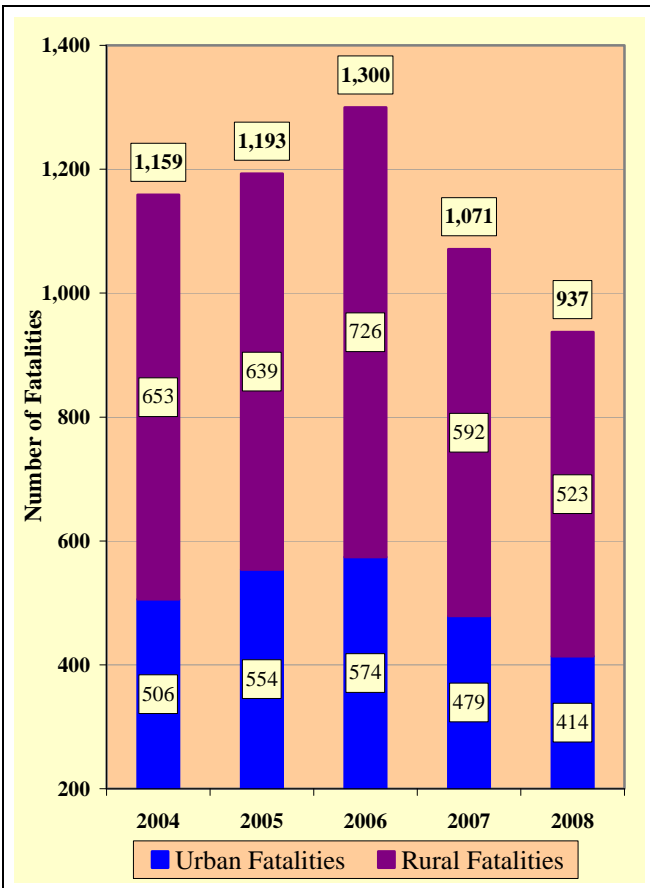
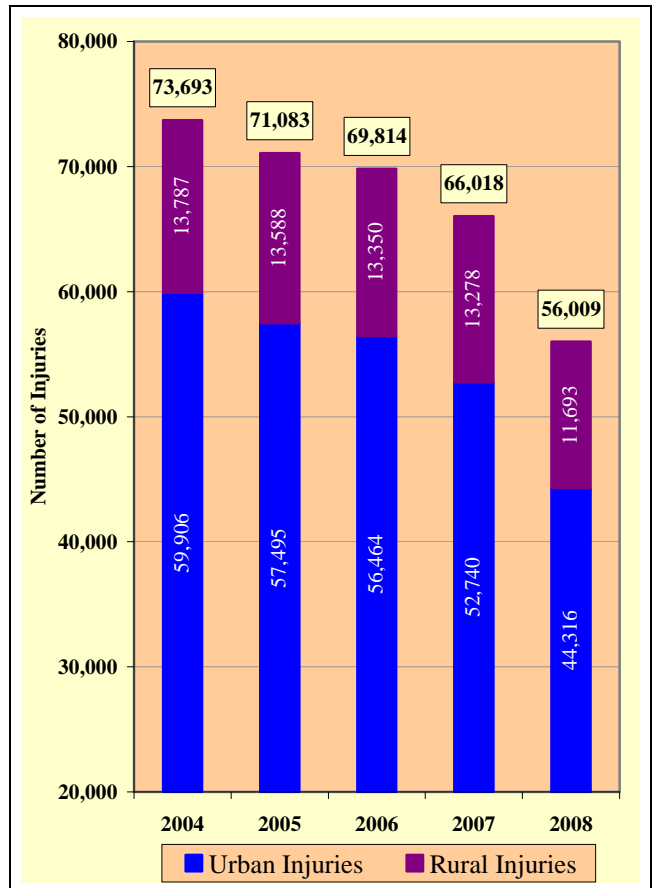


Chart 1 - 8
Traffic Injuries by Geographic Region



Section 1: – Highlights and Historical Trends

Table 1 - 9

Holiday Crash Statistics

Holidays such as Memorial Day, Labor Day, and Thanksgiving are regarded as three or four day weekend holidays for statistical purposes. Holidays such as Christmas, New Year's Day, and the Fourth of July are celebrated on specific dates; which make the holiday period range from two to five days in length.

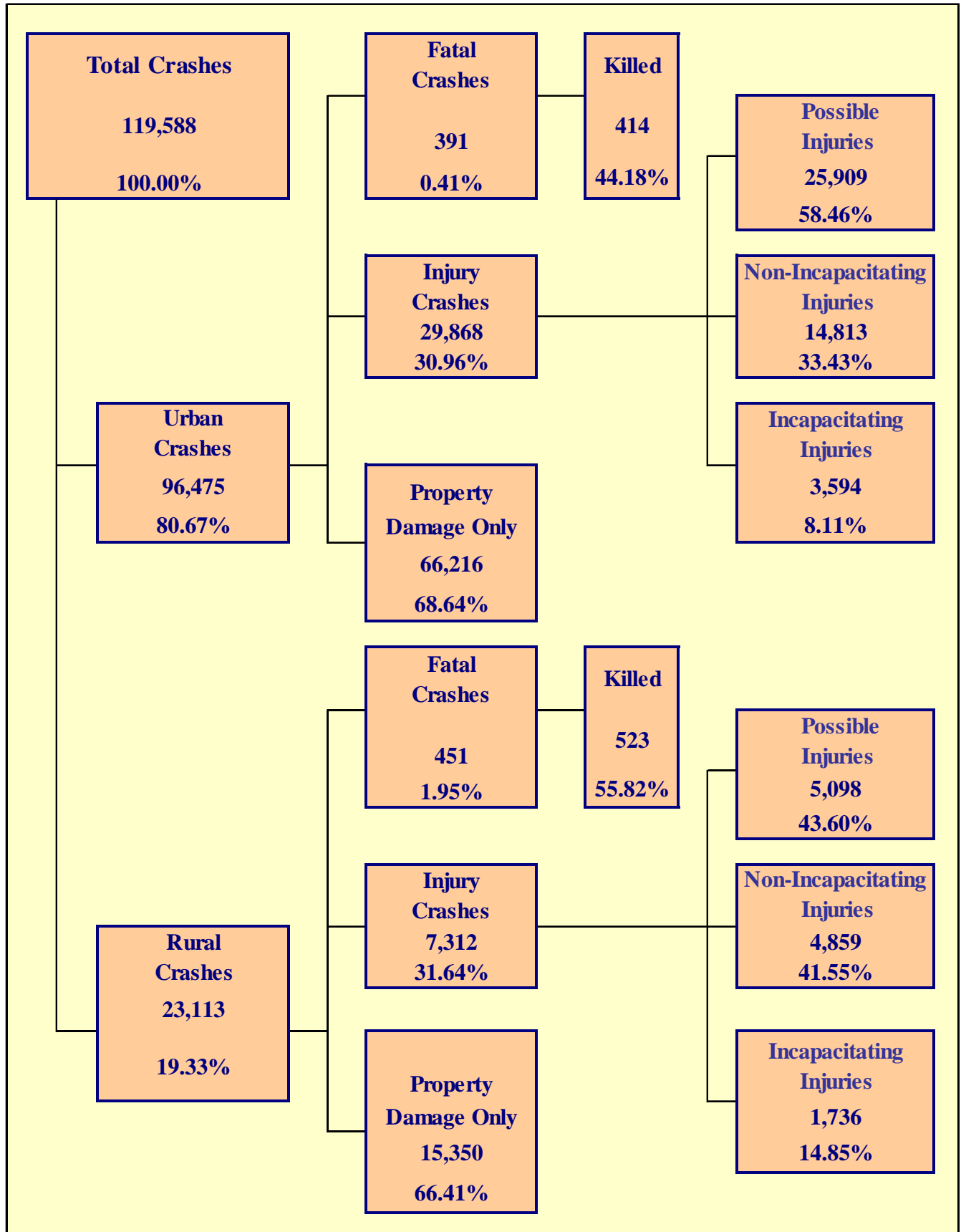
Holiday fatality statistics are based on fatal crashes occurring from 6:00 p.m. on the last working day prior to the holiday through 5:59 a.m. the day following the holiday period. Example: Thanksgiving fatalities are counted from Wednesday evening at 6:00 p.m. through 5:59 a.m. of the following Monday.

2008 Holidays	Beginning at 6:00 p.m.	Ending at 5:59 a.m.	Number of Days	Fatal Crashes	Persons Killed	Alcohol Related Fatal Crashes	Alcohol Related Fatalities
New Year's Day	Friday	Wednesday	5	10	11	6	6
	12/28/2007	1/2/2008					
Memorial Day	Friday	Tuesday	4	14	17	6	6
	5/23/2008	5/27/2008					
July 4th	Thursday	Monday	4	13	15	4	5
	7/3/2008	7/7/2008					
Labor Day	Friday	Tuesday	4	14	19	7	10
	8/29/2008	9/2/2008					
Thanksgiving Day	Wednesday	Monday	5	5	5	4	4
	11/26/2008	12/1/2008					
Christmas Day	Wednesday	Monday	5	2	2	0	0
	12/24/2008	12/29/2008					

Fatal Crashes by Year	New Year's Day	Memorial Day	July 4th	Labor Day	Thanksgiving	Christmas Day	Total
2004	15	14	12	10	17	13	81
2005	18	12	18	5	19	6	78
2006	26	12	22	17	13	13	103
2007	9	7	1	10	14	9	50
2008	10	14	13	14	5	2	58

Persons Killed	New Year's Day	Memorial Day	July 4th	Labor Day	Thanksgiving	Christmas Day	Total
2004	18	14	17	14	18	16	97
2005	23	14	20	8	23	6	94
2006	28	13	24	24	15	13	117
2007	9	7	1	11	16	12	56
2008	11	17	15	19	5	2	69

Number of Days	New Year's Day	Memorial Day	July 4th	Labor Day	Thanksgiving	Christmas Day	Total
2004	5	4	4	4	5	4	26
2005	4	4	4	4	5	4	25
2006	4	4	5	4	5	4	26
2007	4	4	2	4	5	5	24
2008	5	4	4	4	5	5	27



Section 2: – Geographic Location

Fatal Crashes in Arizona (842) accounted for 0.70% of all crashes, Injury Crashes (37,180) accounted for 31.09%, and Property Damage Only (PDO) Crashes (81,566) accounted for 68.21%.

Table 2 - 1

Crash Severity by First Harmful Event Statewide

FHE Type	Number of Crashes				Number of Persons	
	Total	Fatal	Injury	PDO	Killed	Injured
Overturning	3,022	218	1,687	1,117	243	2,873
Collision with other Motor Vehicle	90,052	295	26,952	62,805	340	42,954
Collision with Pedestrian	1,524	121	1,306	97	122	1,413
Collision with Pedalcyclist	1,989	19	1,674	296	19	1,744
Collision with MV on other Rdway	19	2	7	10	2	13
Animal	1,481	1	154	1,326	2	212
Fixed Object	13,277	147	3,760	9,370	170	4,885
Object in Roadway	87	0	16	71	0	19
Other*	4,233	19	446	3,768	19	550
Miscellaneous**	3,904	20	1,178	2,706	20	1,346
TOTAL	119,588	842	37,180	81,566	937	56,009
*Includes Collision with Parked Vehicles, Trains, Machinery, and Unknown Objects						
**Includes Collision with Special Devices, Objects dropped from vehicles, Non-fixed Objects, as well as Vehicle Fires						

Table 2 - 2

Crashes by County

County	Number of Crashes				Number of Persons	
	Total	Fatal	Injury	PDO	Killed	Injured
Apache	680	39	220	421	45	453
Cochise	1,883	30	543	1,310	33	909
Coconino	4,211	44	993	3,174	51	1,539
Gila	1,063	18	358	687	21	538
Graham	359	6	122	231	8	183
Greenlee	96	3	49	44	3	65
La Paz	448	17	149	282	20	236
Maricopa	78,034	338	23,898	53,798	368	35,564
Mohave	3,025	49	1,007	1,969	57	1,566
Navajo	1,286	34	383	869	37	616
Pima	18,218	127	6,176	11,915	137	9,317
Pinal	3,249	64	1,000	2,185	81	1,621
Santa Cruz	678	9	175	494	9	277
Yavapai	3,479	40	1,134	2,305	41	1,662
Yuma	2,879	24	973	1,882	26	1,463
TOTAL	119,588	842	37,180	81,566	937	56,009

Table 2 - 3

Crash Severity by First Harmful Event in Urban Areas

FHE Type	Number of Crashes				Number of Persons	
	Total	Fatal	Injury	PDO	Killed	Injured
Overturning	714	45	402	267	46	646
Collision with other Motor Vehicle	77,719	171	23,180	54,368	186	36,468
Collision with Pedestrian	1,384	87	1,208	89	88	1,302
Collision with Pedalcyclist	1,849	14	1,560	275	14	1,621
Collision with MV on other Rdway	7	0	3	4	0	7
Animal	187	0	18	169	0	20
Fixed Object	8,960	62	2,413	6,485	68	2,995
Object in Roadway	22	0	7	15	0	8
Other*	3,709	5	386	3,318	5	464
Miscellaneous**	1,924	7	691	1,226	7	785
TOTAL	96,475	391	29,868	66,216	414	44,316
*Includes Collision with Parked Vehicles, Trains, Machinery, and Unknown Objects						
**Includes Collision with Special Devices, Objects dropped from vehicles, Non-fixed Objects, as well as Vehicle Fires						

Table 2 - 4

Crash Severity by First Harmful Event in Rural Areas

FHE Type	Number of Crashes				Number of Persons	
	Total	Fatal	Injury	PDO	Killed	Injured
Overturning	2,308	173	1,285	850	197	2,227
Collision with other Motor Vehicle	12,333	124	3,772	8,437	154	6,486
Collision with Pedestrian	140	34	98	8	34	111
Collision with Pedalcyclist	140	5	114	21	5	123
Collision with MV on other Rdway	12	2	4	6	2	6
Animal	1,294	1	136	1,157	2	192
Fixed Object	4,317	85	1,347	2,885	102	1,890
Object in Roadway	65	0	9	56	0	11
Other*	524	14	60	450	14	86
Miscellaneous**	1,980	13	487	1,480	13	561
TOTAL	23,113	451	7,312	15,350	523	11,693
*Includes Collision with Parked Vehicles, Trains, Machinery, and Unknown Objects						
**Includes Collision with Special Devices, Objects dropped from vehicles, Non-fixed Objects, as well as Vehicle Fires						

While Urban Crashes in Arizona (96,475) accounted for 80.67% of all crashes, they accounted for 46.44% of all Fatal Crashes (391) occurring in 2008.

While Rural Crashes in Arizona (23,113) accounted for 19.33% of all crashes, they accounted for 53.56% of all Fatal Crashes (451) occurring in 2008.

Section 2: – Geographic Location

Table 2 - 5

Analysis by Jurisdiction

COUNTIES Cities	Number of Crashes				No. of Persons		Alcohol Related		
	Total	Fatal	Injury	PDO	Killed	Injured	Crashes	Killed	Injured
Apache County	143	14	57	72	16	109	24	5	29
Apache County State Rural Roads	462	25	146	291	29	309	43	12	52
Eagar	28	0	8	20	0	14	0	0	0
St. Johns	12	0	1	11	0	1	1	0	0
Springerville	35	0	8	27	0	20	1	0	7
TOTAL	680	39	220	421	45	453	69	17	88

Cochise County	276	3	75	198	3	117	24	2	14
Cochise County State Rural Roads	535	21	172	342	24	320	30	4	31
Benson	82	2	20	60	2	42	4	0	3
Bisbee	8	2	1	5	2	8	2	1	2
Douglas	183	0	39	144	0	67	15	0	7
Huachuca City	11	0	1	10	0	3	2	0	0
Sierra Vista	759	2	232	525	2	349	31	1	21
Willcox	29	0	3	26	0	3	0	0	0
TOTAL	1,883	30	543	1,310	33	909	108	8	78

Coconino County	225	9	78	138	9	123	16	2	18
Coconino Co. State Rural Roads	1,422	27	372	1,023	34	635	48	5	41
Flagstaff	2,148	6	463	1,679	6	661	117	2	47
Fredonia	4	0	2	2	0	4	0	0	0
Williams	114	2	16	96	2	27	5	0	3
Page	59	0	17	42	0	29	7	0	5
Sedona	239	0	45	194	0	60	4	0	2
TOTAL	4,211	44	993	3,174	51	1,539	197	9	116

Gila County	140	5	52	83	6	76	19	2	14
Gila County State Rural Roads	487	10	163	314	12	244	21	3	17
Globe	218	2	80	136	2	118	19	1	14
Hayden	5	0	2	3	0	2	0	0	0
Miami	18	0	5	13	0	9	0	0	0
Payson	192	1	53	138	1	85	8	1	4
Winkelman	3	0	3	0	0	4	1	0	2
TOTAL	1,063	18	358	687	21	538	68	7	51

Graham County	67	1	25	41	1	34	8	0	6
Graham County State Rural Roads	121	4	33	84	6	52	14	5	12
Pima	9	0	3	6	0	4	1	0	1
Safford	87	1	35	51	1	57	12	1	8
Thatcher	75	0	26	49	0	36	5	0	4
TOTAL	359	6	122	231	8	183	40	6	31

Greenlee County	6	0	2	4	0	3	1	0	1
Greenlee Co. State Rural Roads	81	2	43	36	2	58	7	1	5
Clifton	9	1	4	4	1	4	2	1	0
TOTAL	96	3	49	44	3	65	10	2	6

Table 2 - 5

Analysis by Jurisdiction

COUNTIES Cities	Number of Crashes				No. of Persons		Alcohol Related		
	Total	Fatal	Injury	PDO	Killed	Injured	Crashes	Killed	Injured
La Paz County	47	4	17	26	4	22	6	2	6
La Paz County State Rural Roads	320	10	109	201	13	182	20	2	14
Parker	32	3	7	22	3	11	3	1	1
Quartzite	49	0	16	33	0	21	0	0	0
TOTAL	448	17	149	282	20	236	29	5	21

Maricopa County	3,320	32	1,159	2,129	34	1,716	209	12	199
Maricopa Co. State Rural Roads	2,469	37	755	1,677	43	1,201	105	6	83
Avondale	1,271	2	324	945	3	497	63	2	35
Buckeye	374	2	126	246	2	200	21	1	17
Cave Creek	74	0	22	52	0	33	6	0	1
Chandler	4,032	7	1,086	2,939	7	1,582	265	4	140
El Mirage	312	0	72	240	0	107	18	0	13
Gila Bend	40	1	11	28	4	21	1	0	0
Gilbert	2,352	7	681	1,664	7	945	115	1	73
Glendale	4,828	15	1,274	3,539	17	1,872	224	6	129
Goodyear	1,179	5	374	800	5	610	47	1	37
Mesa	7,022	30	2,194	4,798	33	3,109	428	12	234
Paradise Valley	240	1	56	183	1	74	12	1	6
Peoria	2,462	16	688	1,758	18	1,003	109	4	59
Phoenix	34,449	145	11,087	23,217	153	16,968	1,840	63	1,340
Scottsdale	4,116	15	1,289	2,812	15	1,819	306	6	210
Surprise	1,106	6	323	777	7	488	54	2	45
Tempe	7,089	13	2,015	5,061	15	2,785	354	10	211
Tolleson	479	2	133	344	2	212	22	1	24
Wickenburg	86	1	23	62	1	28	2	0	1
Youngtown	6	0	1	5	0	2	0	0	0
Guadalupe	319	0	87	232	0	121	16	0	14
Litchfield Park	81	1	27	53	1	41	3	0	2
Queen Creek	123	0	36	87	0	60	6	0	8
Fountain Hills	172	0	48	124	0	60	13	0	7
Carefree	33	0	7	26	0	10	1	0	0
TOTAL	78,034	338	23,898	53,798	368	35,564	4,240	132	2,888

Mohave County	389	9	138	242	10	215	39	2	37
Mohave County State Rural Roads	932	28	346	558	34	586	81	15	65
Kingman	517	1	170	346	1	260	34	0	28
Lake Havasu City	521	2	139	380	2	191	55	1	27
Bullhead City	651	9	207	435	10	304	48	5	17
Colorado City	15	0	7	8	0	10	0	0	0
TOTAL	3,025	49	1,007	1,969	57	1,566	257	23	174

Section 2: – Geographic Location

Table 2 - 5

Analysis by Jurisdiction

COUNTIES Cities	Number of Crashes				No. of Persons		Alcohol Related		
	Total	Fatal	Injury	PDO	Killed	Injured	Crashes	Killed	Injured
Navajo County	142	10	49	83	12	78	19	5	10
Navajo County State Rural Roads	464	18	162	284	19	273	33	8	30
Holbrook	80	0	23	57	0	29	9	0	4
Show Low	244	3	60	181	3	102	13	0	13
Snowflake	58	1	14	43	1	25	6	0	9
Taylor	34	1	6	27	1	10	2	0	1
Winslow	140	1	30	109	1	47	16	0	7
Pinetop-Lakeside	124	0	39	85	0	52	8	0	8
TOTAL	1,286	34	383	869	37	616	106	13	82

Pima County	3,855	39	1,163	2,653	40	1,856	282	25	215
Pima County State Rural Roads	997	22	339	636	27	571	54	8	36
South Tucson	163	1	46	116	1	61	5	1	2
Tucson	11,618	51	4,254	7,313	54	6,249	595	22	443
Sahuarita	194	4	45	145	4	69	11	1	5
Oro Valley	427	3	101	323	3	165	8	2	4
Marana	964	7	228	729	8	346	29	3	16
TOTAL	18,218	127	6,176	11,915	137	9,317	984	62	721

Pinal County	262	19	70	173	22	137	26	9	16
Pinal County State Rural Roads	1,158	29	374	755	43	616	68	5	63
Casa Grande	933	3	266	664	3	398	44	1	37
Coolidge	156	3	47	106	3	78	13	0	9
Eloy	163	5	45	113	5	117	12	2	5
Florence	94	1	24	69	1	35	7	0	12
Kearny	3	0	2	1	0	3	0	0	0
Mammoth	2	0	1	1	0	1	0	0	0
Superior	7	0	1	6	0	2	1	0	0
Apache Junction	471	4	170	297	4	234	30	1	17
TOTAL	3,249	64	1,000	2,185	81	1,621	201	18	159

Santa Cruz County	95	6	26	63	6	47	4	1	1
Santa Cruz Co. State Rural Roads	213	2	72	139	2	119	9	0	6
Nogales	370	1	77	292	1	111	15	0	16
TOTAL	678	9	175	494	9	277	28	1	23

Yavapai County	373	5	136	232	5	207	42	3	28
Yavapai County State Rural Roads	1,188	24	396	768	25	577	58	4	45
Clarkdale	10	0	4	6	0	7	1	0	0
Cottonwood	308	1	89	218	1	124	24	1	11
Prescott	796	3	264	529	3	367	34	0	21
Prescott Valley	580	3	165	412	3	247	49	1	29
Chino Valley	110	3	39	68	3	73	6	1	11
Camp Verde	114	1	41	72	1	60	9	0	9
TOTAL	3,479	40	1,134	2,305	41	1,662	223	10	154

Table 2 - 5

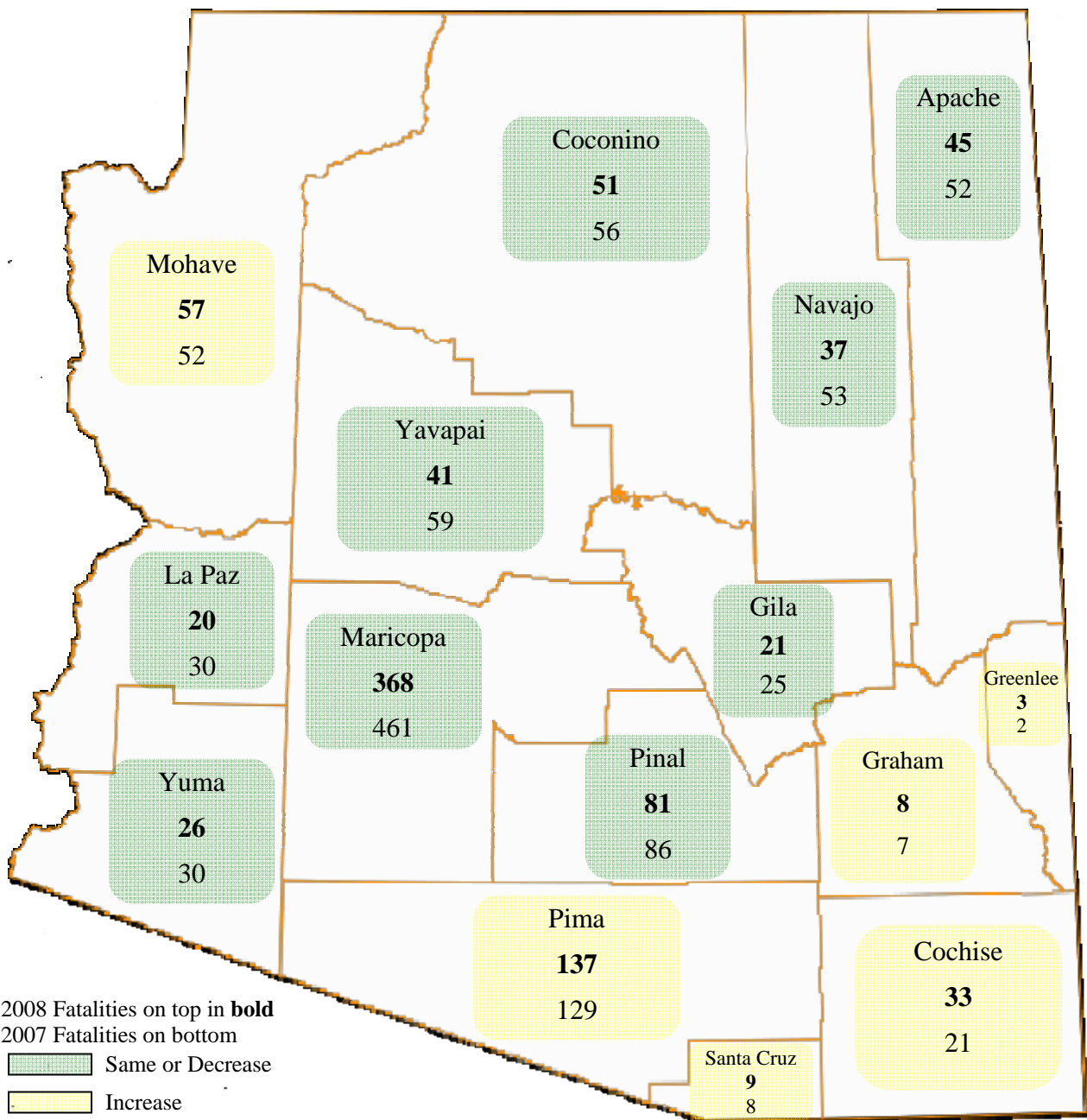
Analysis by Jurisdiction

COUNTIES Cities	Number of Crashes				No. of Persons		Alcohol Related		
	Total	Fatal	Injury	PDO	Killed	Injured	Crashes	Killed	Injured
Yuma County	491	7	150	334	9	233	33	5	23
Yuma County State Rural Roads	301	5	104	192	5	167	17	0	12
Somerton	15	0	4	11	0	4	1	0	0
Yuma	1,954	10	698	1,246	10	1,039	141	6	103
Wellton	5	0	0	5	0	0	0	0	0
San Luis	113	2	17	94	2	20	5	0	3
TOTAL	2,879	24	973	1,882	26	1,463	197	11	141

Some individual city data may be incomplete due to lack of timely reporting.

Totals within city and town jurisdictions include all state highways.

Total Fatalities by County for 2007 and 2008



Section 2: – Geographic Location

Chart 2 - 1

Urban and Rural Crashes by Day of Week

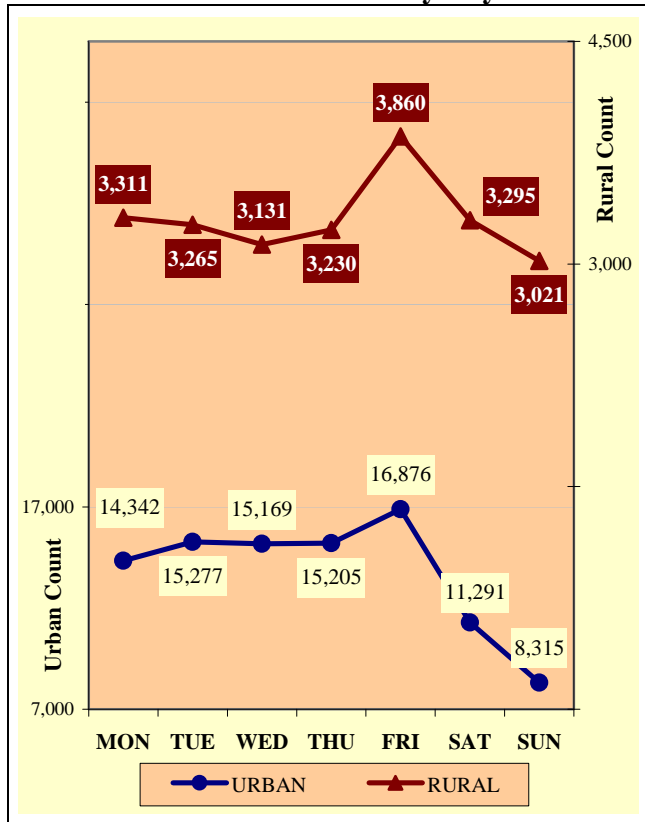


Chart 2 - 2

Urban and Rural Fatal Crashes by Day of Week

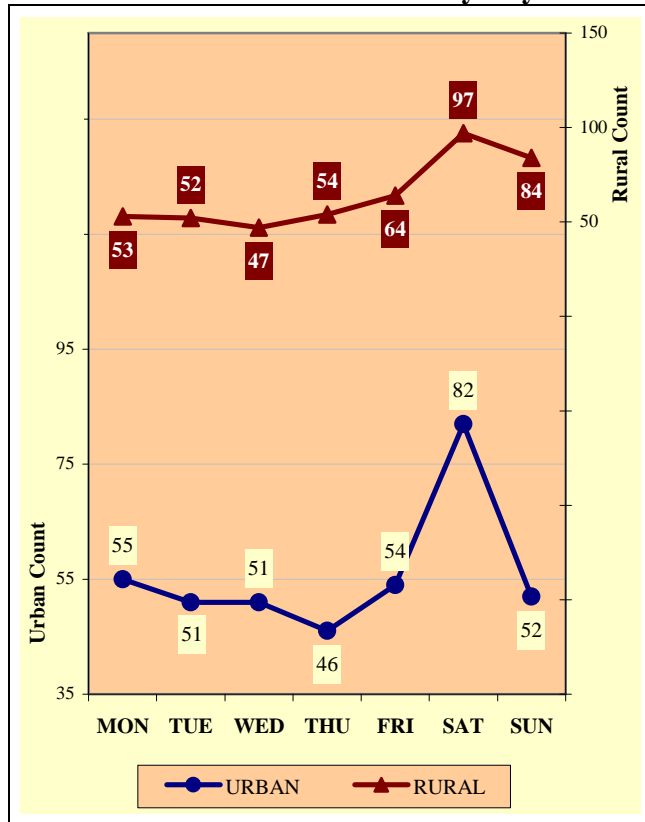
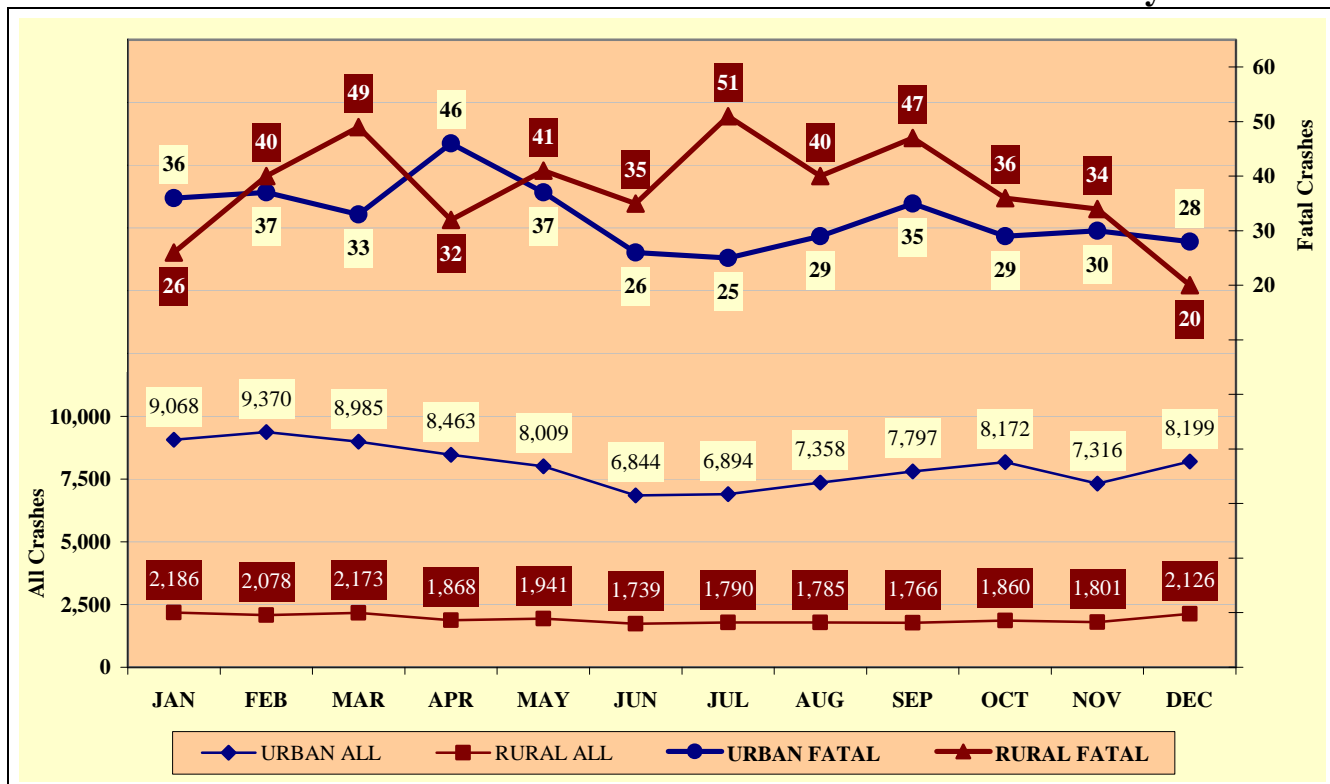
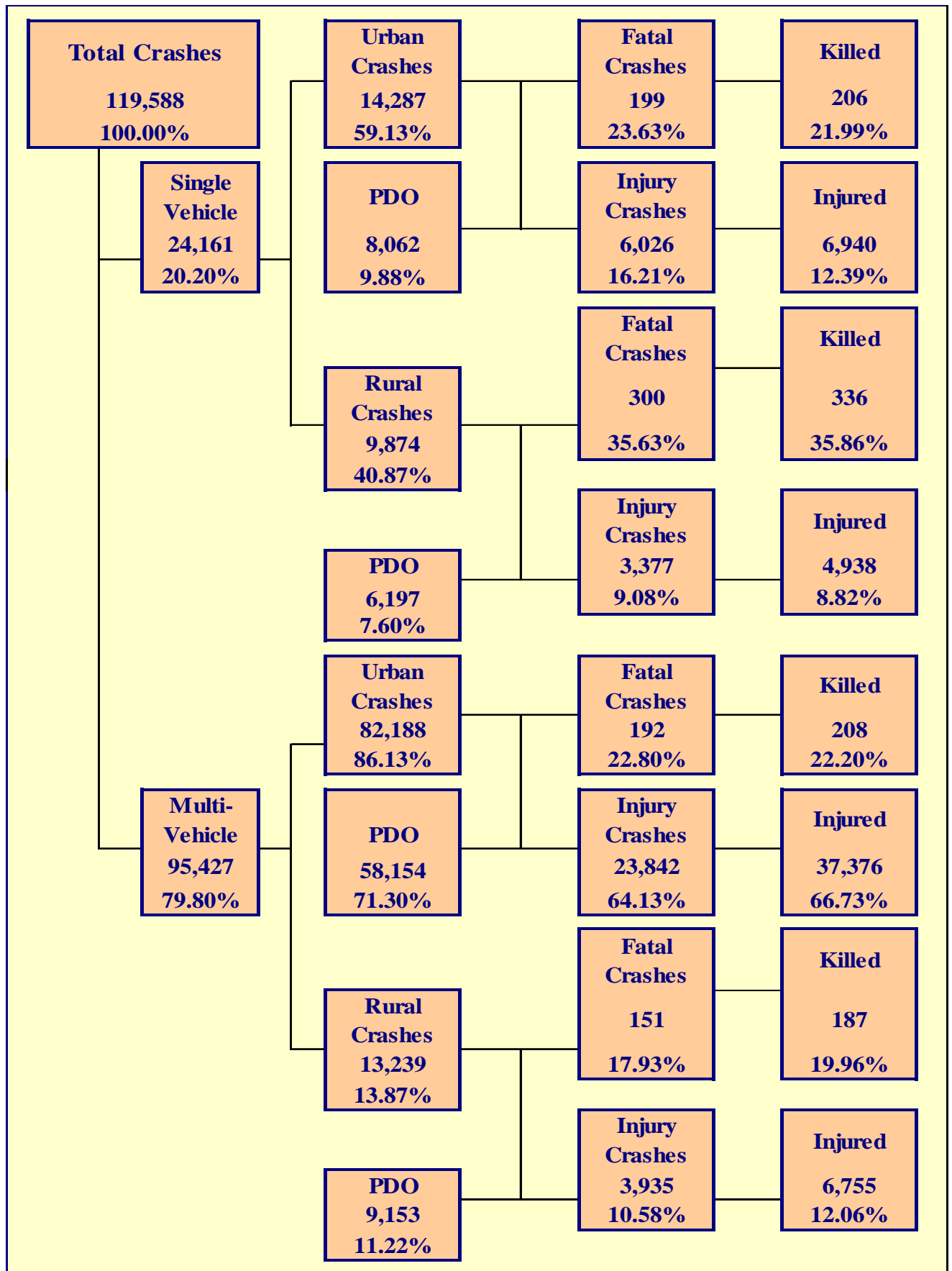


Chart 2 - 3

All Urban and Rural Crashes vs. Urban and Rural Fatal Crashes by Month





Section 3: – Crash Descriptions

Table 3 - 1

Manner of Collision in Multi-Vehicle Crashes

Manner of Collision Type	Number of Crashes							
	Total	Percent of All Crashes	Fatal	Percent of Fatal Crashes	Injury	Percent of Injury Crashes	PDO	Percent of PDO Crashes
Sideswipe (same)	14,401	15.09%	15	4.37%	1,946	7.01%	12,440	18.48%
Sideswipe (opposite)	1,165	1.22%	9	2.62%	293	1.05%	863	1.28%
Angle	17,848	18.70%	79	23.03%	6,135	22.09%	11,634	17.28%
Left Turn	10,500	11.00%	58	16.91%	4,695	16.90%	5,747	8.54%
Rear-End	43,738	45.83%	61	17.78%	13,259	47.73%	30,418	45.19%
Head-On	822	0.86%	54	15.74%	370	1.33%	398	0.59%
Backing	2,816	2.95%	1	0.29%	118	0.42%	2,697	4.01%
Other	2,105	2.21%	47	13.70%	452	1.63%	1,606	2.39%
Non-Contact (MC)	66	0.07%	1	0.29%	55	0.20%	10	0.01%
Non-Contact (not MC)	558	0.58%	10	2.92%	89	0.32%	459	0.68%
U-Turn	1,408	1.48%	8	2.33%	365	1.31%	1,035	1.54%
TOTAL	95,427	100.00%	343	100.00%	27,777	100.00%	67,307	100.00%

Table 3 - 2

Unusual Road Conditions

Type of Unusual Road Condition	Incident Counts				Person Counts	
	Total	Fatal	Injury	PDO	Killed	Injured
No Unusual Conditions	112,860	806	35,308	76,746	898	53,171
Under Construction, Traffic Allowed	4,697	14	1,260	3,423	14	1,906
Under Construction, Traffic Detoured	125	0	33	92	0	45
Under Repairs	86	0	23	63	0	33
Holes, Ruts, Bumps	405	7	162	236	8	252
Obstruction (protected)	25	1	7	17	1	8
Obstruction (unprotected)	140	1	28	111	2	40
Obstruction (unlighted at night)	122	3	32	87	4	50
Defective Shoulders	31	1	7	23	1	11
Changing Roadwidth	288	0	88	200	0	121
Flooded	460	5	130	325	5	214
Temporary Lane Closure	349	4	102	243	4	158
TOTAL	119,588	842	37,180	81,566	937	56,009

Table 3 - 3

Lighting Conditions

Type of Lighting Conditions	Incident Counts				Person Counts	
	Total	Fatal	Injury	PDO	Killed	Injured
Daylight	85,874	396	26,682	58,796	448	39,840
Dawn or Dusk	6,277	74	1,945	4,258	80	2,940
Darkness	26,879	358	8,463	18,058	394	13,098
Not Reported	558	14	90	454	15	131
TOTAL	119,588	842	37,180	81,566	937	56,009

Table 3 - 4

Weather Conditions

Type of Conditions	Incident Counts				Person Counts	
	Total	Fatal	Injury	PDO	Killed	Injured
Clear	104,386	687	32,773	70,926	765	49,211
Cloudy	8,409	77	2,581	5,751	90	4,021
Sleet/Hail	87	2	28	57	2	44
Rain	4,733	13	1,338	3,382	14	2,011
Snow	996	4	209	783	5	349
Severe Crosswinds	140	2	43	95	2	65
Blowing Sand, Soil, Dirt, Snow	98	1	32	65	1	49
Fog, Smog, Smoke	49	0	15	34	0	23
Not Reported	690	56	161	473	58	236
TOTAL	119,588	842	37,180	81,566	937	56,009

Table 3 - 5

Road Surface Type

Type of Surface	Incident Counts				Person Counts	
	Total	Fatal	Injury	PDO	Killed	Injured
Asphalt	114,859	749	35,677	78,433	840	53,840
Concrete	2,550	9	821	1,720	10	1,160
Gravel	279	2	83	194	2	126
Dirt	1,025	24	354	647	24	515
Other	79	2	26	51	2	31
Not Reported	796	56	219	521	59	337
TOTAL	119,588	842	37,180	81,566	937	56,009

Table 3 - 6

Road Surface Conditions

Type of Road Surface Condition	Incident Counts				Person Counts	
	Total	Fatal	Injury	PDO	Killed	Injured
Dry	109,272	734	34,339	74,199	824	51,714
Wet	6,491	28	1,822	4,641	29	2,748
Not Reported, No Unusual Condition	1,415	64	415	936	68	612
Sand, Mud, Dirt, Oil or Gravel	502	8	195	299	8	283
Snow	689	3	136	550	3	222
Slush	177	1	45	131	1	75
Ice	707	1	171	535	1	268
Other	68	2	18	48	2	35
Unknown	267	1	39	227	1	52
TOTAL	119,588	842	37,180	81,566	937	56,009

Table 3 - 7

Road Grade

Type of Grade	Incident Counts				Person Counts	
	Total	Fatal	Injury	PDO	Killed	Injured
Level	107,909	618	33,448	73,843	690	50,380
Downgrade	5,855	105	1,924	3,826	117	2,917
Upgrade	4,195	50	1,324	2,821	57	1,944
Hillcrest	352	3	129	220	3	219
Dip	154	5	62	87	6	107
Not Reported	1,123	61	293	769	64	442
TOTAL	119,588	842	37,180	81,566	937	56,009

Section 3: – Crash Descriptions

Chart 3 - 1

All Crashes vs. Fatal Crashes by Time of Day - Weekdays

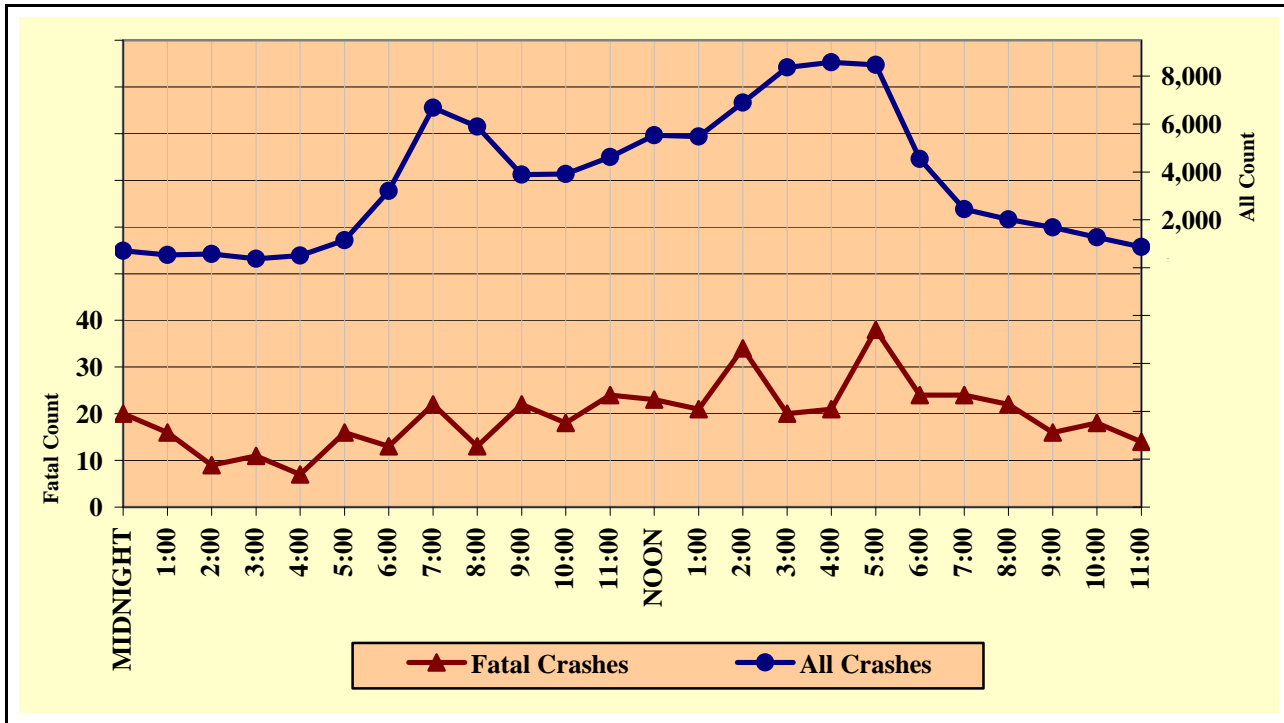


Chart 3 - 2

All Crashes vs. Fatal Crashes by Time of Day - Weekends

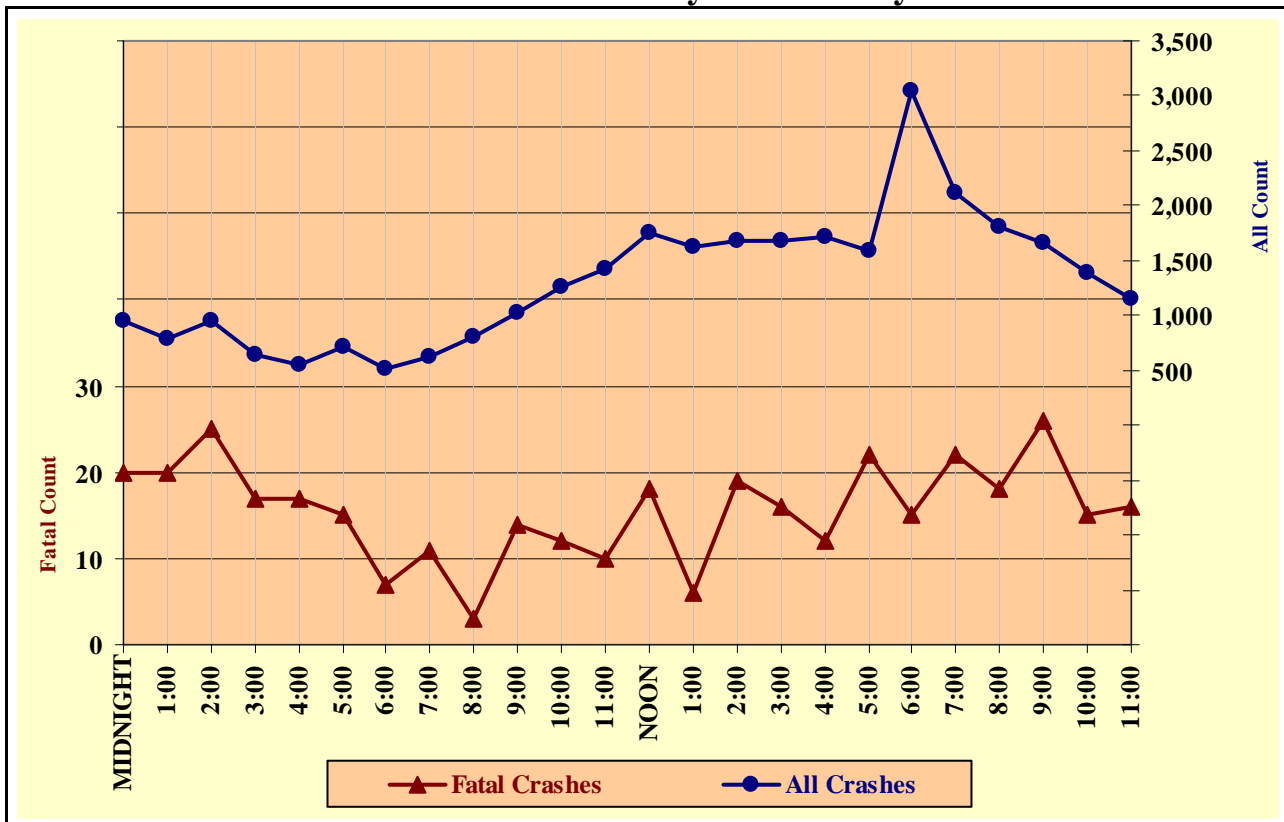


Chart 3 - 3

Crashes by Day of Week

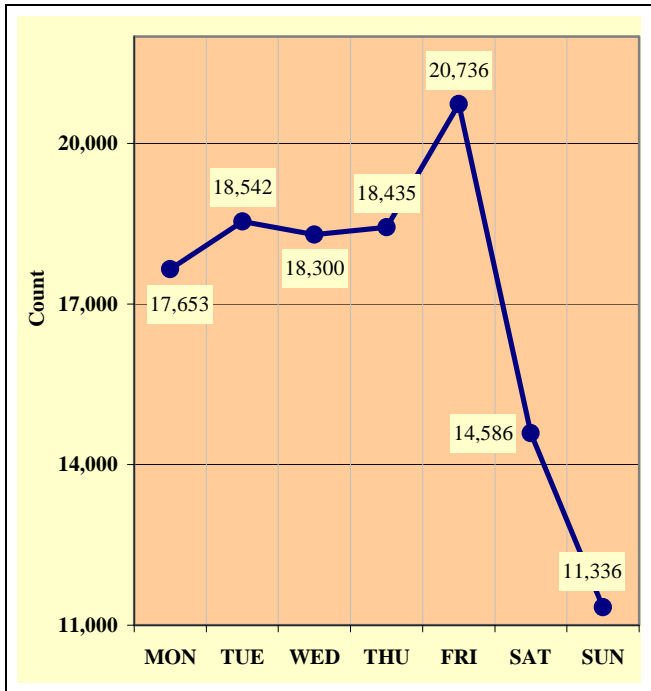


Chart 3 - 4

Fatal Crashes by Day of Week

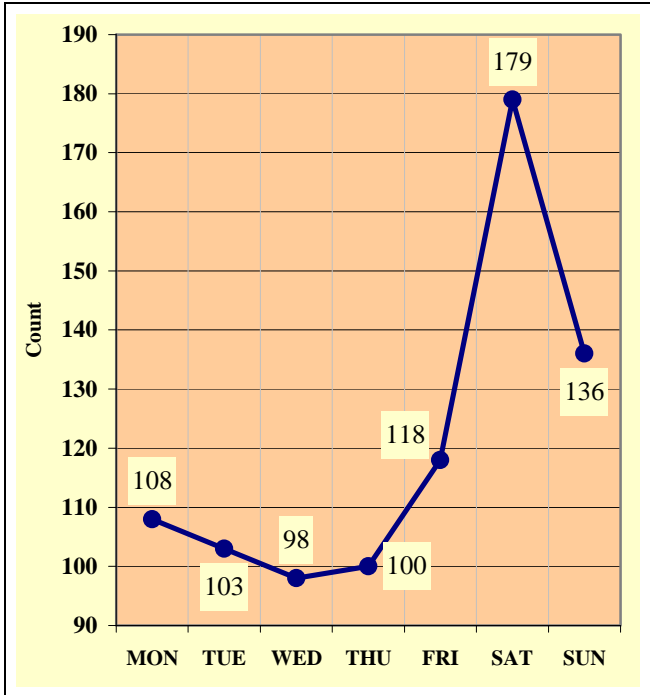
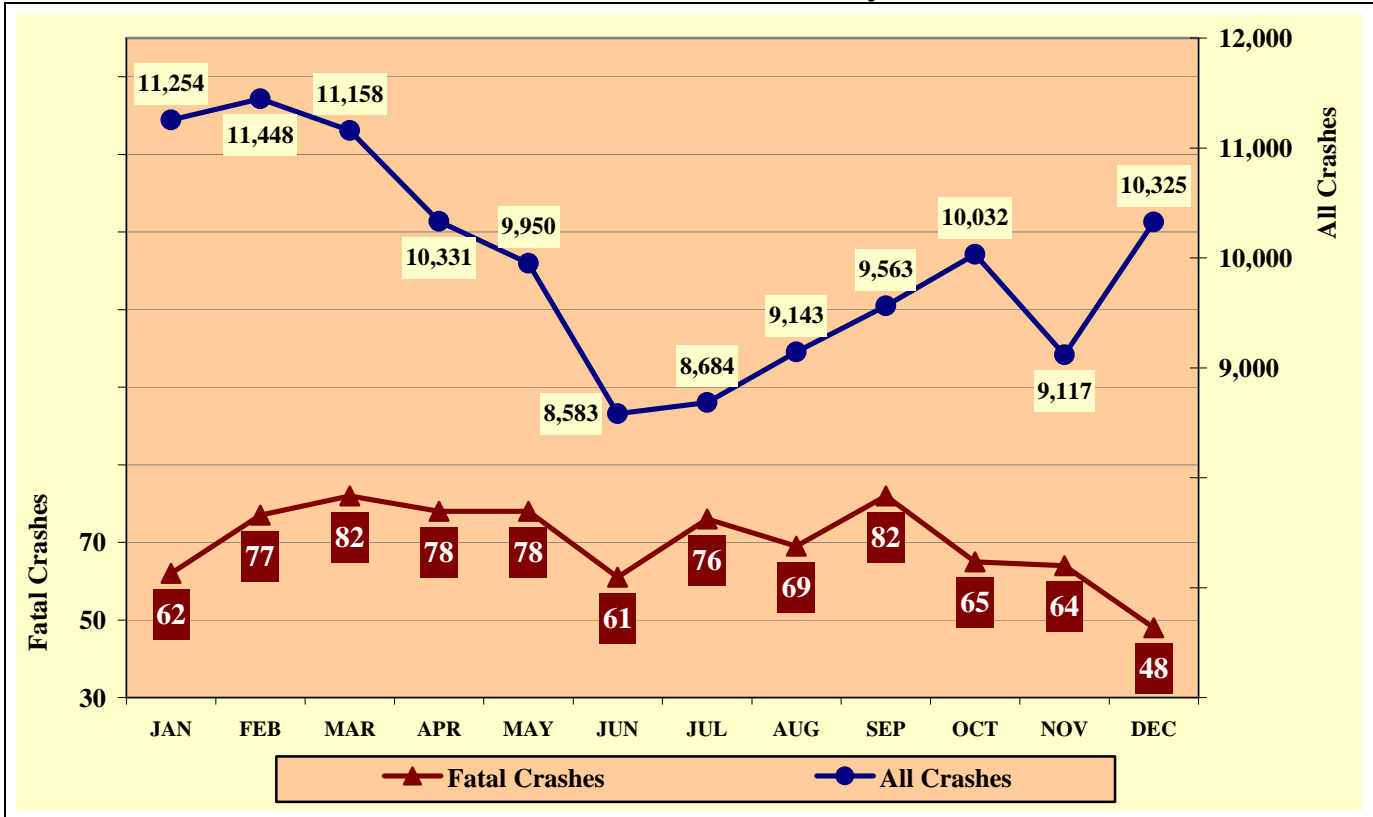


Chart 3 - 5

All Crashes vs. Fatal Crashes by Month



Section 3: – Crash Descriptions

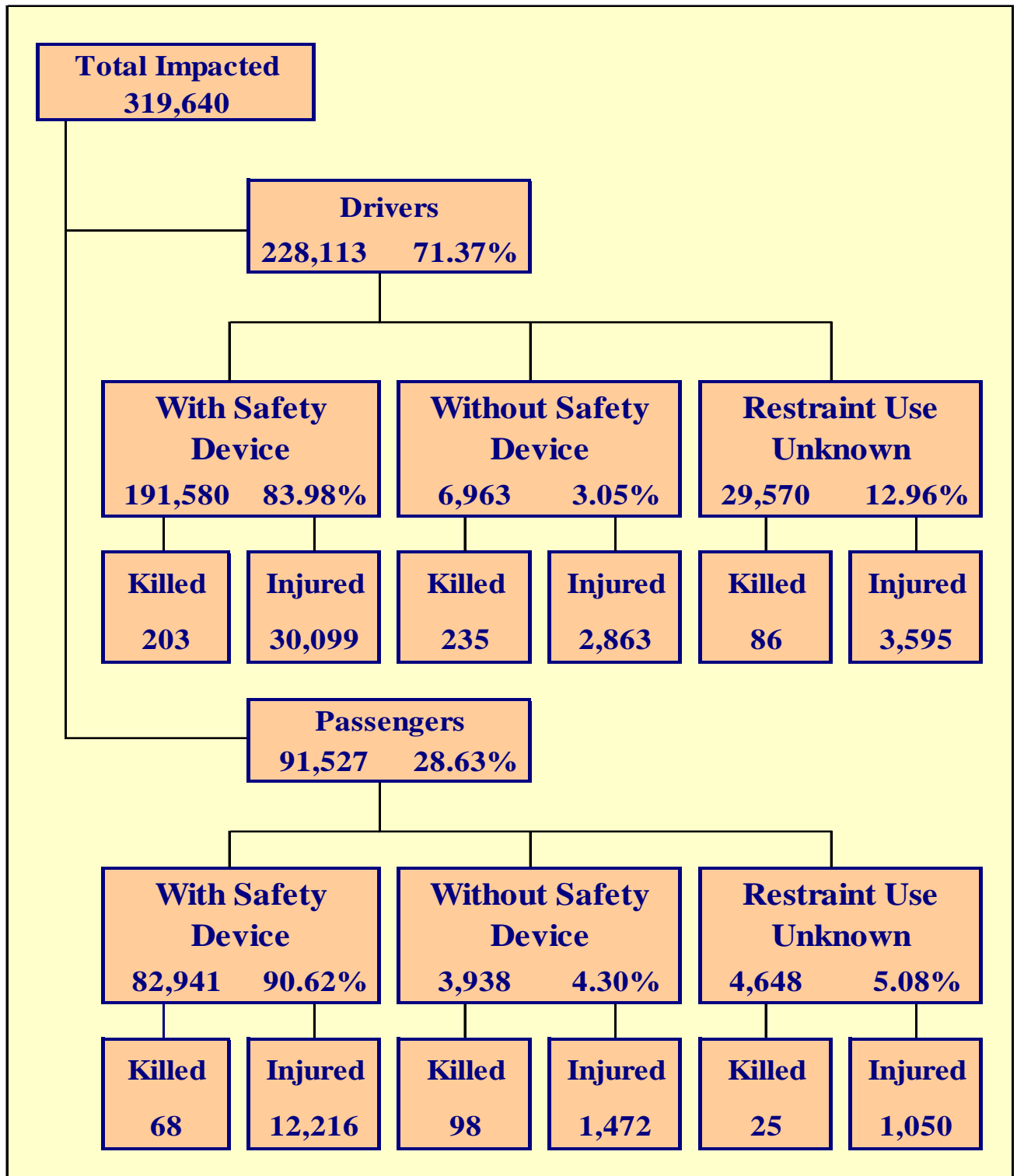
Table 3 - 8

Crashes by Hour and Day of Week

Hour Beginning	Total Crashes		Monday		Tuesday		Wednesday		Thursday		Friday		Saturday		Sunday		Weekdays		Weekends	
	All	Fatal	All	Fatal	All	Fatal	All	Fatal	All	Fatal	All	Fatal	All	Fatal	All	Fatal	All	Fatal	All	Fatal
MIDNIGHT	1,647	40	174	0	182	2	143	9	178	3	199	6	369	12	402	8	702	20	945	20
1:00	1,321	36	128	4	142	6	103	3	133	5	154	2	316	13	345	3	532	16	789	20
2:00	1,529	34	129	7	112	1	121	1	143	3	202	4	397	7	425	11	578	9	951	25
3:00	1,015	28	74	3	90	2	87	2	87	5	107	2	279	6	291	8	371	11	644	17
4:00	1,057	24	143	5	135	2	114	3	117	1	137	1	189	9	222	3	503	7	554	17
5:00	1,863	31	287	5	265	5	285	3	291	5	305	3	213	2	217	8	1,146	16	717	15
6:00	3,721	20	630	1	695	4	680	3	624	4	580	1	278	4	234	3	3,209	13	512	7
7:00	7,290	33	1,324	6	1,530	1	1,384	4	1,306	6	1,130	5	371	8	245	3	6,674	22	616	11
8:00	6,698	16	1,134	2	1,320	2	1,221	4	1,194	2	1,026	3	503	2	300	1	5,895	13	803	3
9:00	4,903	36	805	6	846	5	756	3	709	3	769	5	634	10	384	4	3,885	22	1,018	14
10:00	5,180	30	775	6	800	1	814	3	773	4	749	4	703	6	566	6	3,911	18	1,269	12
11:00	6,031	34	888	5	914	5	914	4	893	7	1,006	3	886	3	530	7	4,615	24	1,416	10
NOON	7,285	41	1,092	5	1,080	4	1,086	5	1,106	5	1,166	4	991	11	764	7	5,530	23	1,755	18
1:00	7,115	27	1,063	5	1,040	2	1,079	4	998	3	1,302	7	936	4	697	2	5,482	21	1,633	6
2:00	8,563	53	1,321	6	1,331	7	1,293	7	1,312	7	1,631	7	960	11	715	8	6,888	34	1,675	19
3:00	10,042	36	1,647	3	1,659	4	1,503	5	1,590	4	1,959	4	937	11	747	5	8,358	20	1,684	16
4:00	10,294	33	1,552	1	1,677	5	1,721	5	1,697	0	1,927	10	929	4	791	8	8,574	21	1,720	12
5:00	10,069	60	1,583	3	1,745	9	1,709	7	1,650	9	1,786	10	845	14	751	8	8,473	38	1,596	22
6:00	7,585	39	1,059	6	1,104	11	1,148	5	1,230	2	1,395	8	911	4	738	3	4,541	24	3,044	15
7:00	4,566	46	568	6	583	9	622	3	672	6	835	5	731	9	555	8	2,445	24	2,121	22
8:00	3,818	40	452	9	474	7	513	3	577	3	673	6	635	8	494	4	2,016	22	1,802	18
9:00	3,335	42	353	4	360	2	429	4	534	6	636	7	599	12	424	7	1,676	16	1,659	26
10:00	2,656	33	278	7	281	4	333	5	371	2	573	4	539	4	281	7	1,263	18	1,393	15
11:00	2,005	30	194	3	177	3	242	3	250	5	489	7	435	5	218	4	863	14	1,142	16
TOTAL	119,588	842	17,653	108	18,542	103	18,300	98	18,435	100	20,736	118	14,586	179	11,336	136	88,130	466	31,458	376

Crashes during Weekends accounted for 26.31% of all crashes and 44.66% of Fatal Crashes.

Crashes during Weekdays accounted for 73.69% of all crashes and 55.34% of Fatal Crashes.



Section 4: – Safety Devices

Arizona law requires young children to be restrained when riding in a motor vehicle.

A.R.S. Title 28-907 states "...a person shall not operate a motor vehicle on the highways in this state when transporting a child who is under five years of age unless that child is properly secured in a child passenger restraint system."

Table 4 - 1

Child Restraint Usage (less than five years old)

Severity of Injury	Restraint Used	Percent of Restraint Used	No Restraint Used	Percent of No Restraint	Not Reported	Percent of Unknown
No Injury	10,157	89.62%	212	72.11%	337	75.39%
Unknown Injury	147	1.30%	6	2.04%	52	11.63%
Possible Injury	741	6.54%	34	11.56%	35	7.83%
Non-Incapacitating Injury	236	2.08%	33	11.22%	17	3.80%
Incapacitating Injury	50	0.44%	7	2.38%	4	0.89%
Fatal Injury	3	0.03%	2	0.68%	2	0.45%
TOTALS	11,334	100.00%	294	100.00%	447	100.00%

The most dangerous place for a child to travel in a car is in your lap.

This is often called the "child crusher position." In a crash of approximately 30 mph, a 10 pound infant will be ripped from a belted adult's arms with a force of almost 200 pounds. If the adult is unbelted, the child is likely to be crushed between the adult's body and the dashboard.

Wearing a seat belt isn't just a good idea; in Arizona, it's the law.

Table 4 - 2

Driver Restraint Usage

Severity of Injury	Restraint Used	Percent of Restraint Used	No Restraint Used	Percent of No Restraint	Not Reported	Percent of Unknown
No Injury	159,100	83.05%	3,425	49.19%	11,751	39.74%
Unknown Injury	2,178	1.14%	440	6.32%	14,138	47.81%
Possible Injury	18,263	9.53%	811	11.65%	1,607	5.43%
Non-Incapacitating Injury	9,848	5.14%	1,346	19.33%	1,415	4.79%
Incapacitating Injury	1,988	1.04%	706	10.14%	573	1.94%
Fatal Injury	203	0.11%	235	3.37%	86	0.29%
TOTALS	191,580	100.00%	6,963	100.00%	29,570	100.00%

Table 4 - 3

Front-Seat Passenger Restraint Usage

Severity of Injury	Restraint Used	Percent of Restraint Used	No Restraint Used	Percent of No Restraint	Not Reported	Percent of Unknown
No Injury	38,140	82.10%	971	52.94%	1,737	65.52%
Unknown Injury	356	0.77%	19	1.04%	204	7.70%
Possible Injury	4,814	10.36%	263	14.34%	322	12.15%
Non-Incapacitating Injury	2,611	5.62%	350	19.08%	264	9.96%
Incapacitating Injury	481	1.04%	174	9.49%	107	4.04%
Fatal Injury	56	0.12%	57	3.11%	17	0.64%
TOTALS	46,458	100.00%	1,834	100.00%	2,651	100.00%

Safety belts used in conjunction with airbags are the most effective protection in vehicle crashes.

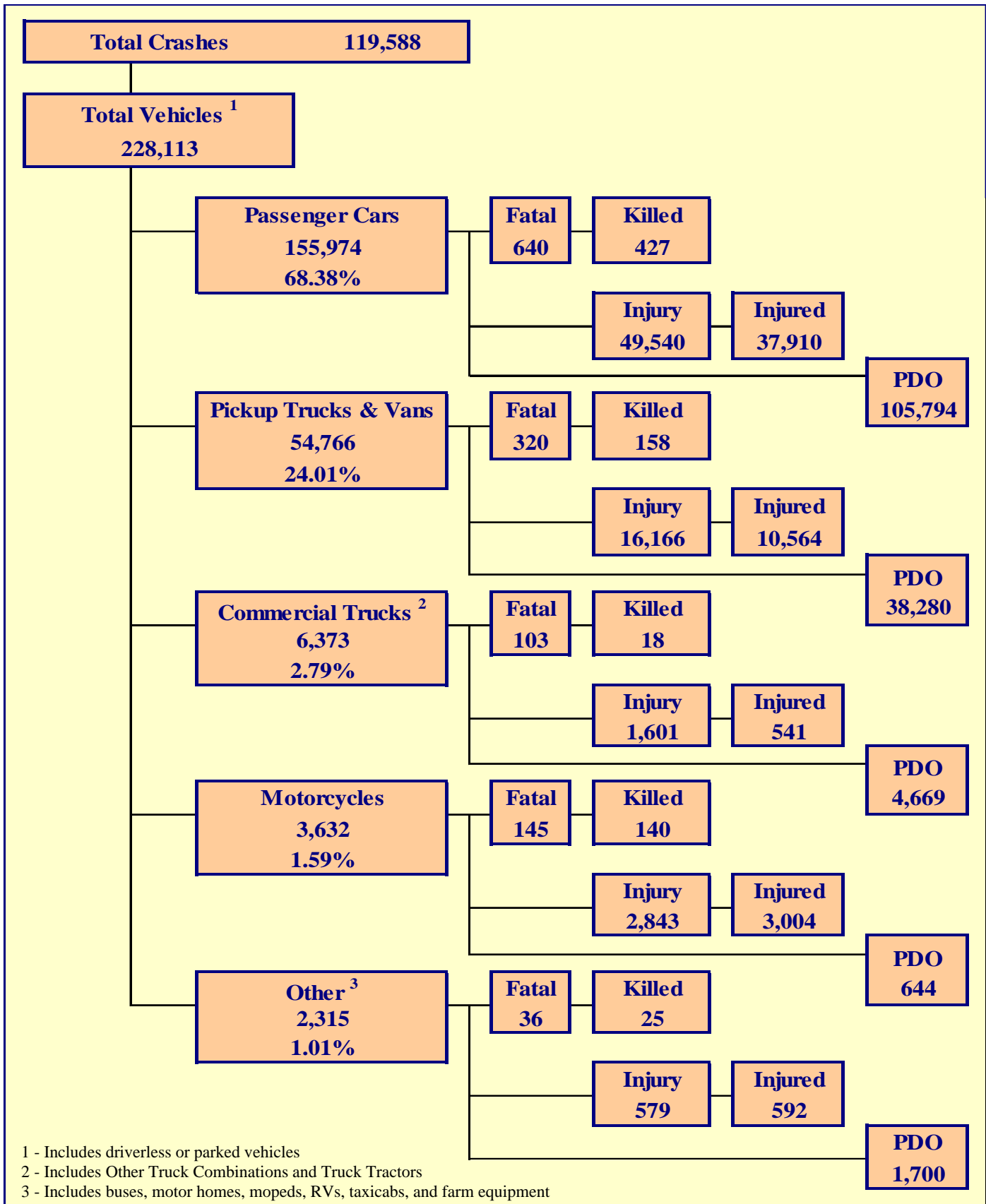
Source: www.nsc.org

Table 4 - 4

Rear-Seat Passenger Restraint Usage

Severity of Injury	Restraint Used	Percent of Restraint Used	No Restraint Used	Percent of No Restraint	Not Reported	Percent of Unknown
No Injury	21,637	86.04%	1,139	62.93%	1,145	73.87%
Unknown Injury	220	0.87%	21	1.16%	98	6.32%
Possible Injury	2,123	8.44%	219	12.10%	140	9.03%
Non-Incapacitating Injury	979	3.89%	258	14.25%	113	7.29%
Incapacitating Injury	181	0.72%	134	7.40%	48	3.10%
Fatal Injury	9	0.04%	39	2.15%	6	0.39%
TOTALS	25,149	100.00%	1,810	100.00%	1,550	100.00%

Section 5 ♦ Motor Vehicle and Driver Descriptions



Section 5: – Motor Vehicle and Driver Descriptions

Table 5 - 1

Arizona Motor Vehicle Registrations

Privately Owned Vehicles	4,227,540
Commercial Vehicles	455,824
Buses and Taxis	3,831
Motorcycles	154,536
Mopeds	457
TOTAL	4,842,188
Source: MVD - MV988 MV630419, Currently Registered Vehicles by County Listing, dated 12/31/2008.	

Table 5 - 2

Motor Vehicle Crash Involvement by Vehicle Type

Motor Vehicle Type	Vehicle Counts				
	Total	Percent	Fatal	Injury	PDO
Passenger Car (Includes cars with trailer)	155,974	68.376%	640	49,540	105,794
Pickup Truck and Vans	54,711	23.984%	314	16,147	38,250
Pickup Truck With Camper	55	0.024%	6	19	30
Other Vehicle With Camper	5	0.002%	0	1	4
Truck Tractor Only	231	0.101%	0	38	193
Truck Tractor and Semi-Trailer	3,683	1.615%	75	850	2,758
Other Truck Combination	2,459	1.078%	28	713	1,718
Farm Tractor and/or Farm Equipment	40	0.018%	0	16	24
Taxicab	10	0.004%	1	2	7
Commercial Bus	233	0.102%	4	45	184
Non-Commercial Bus	787	0.345%	3	162	622
School Bus	486	0.213%	3	100	383
Motorcycle (two or three wheel)	3,632	1.592%	145	2,843	644
Motorscooter or Motor Bicycle (Includes ATV)	36	0.016%	17	16	3
Moped	16	0.007%	0	14	2
Recreational Vehicle	55	0.024%	0	20	35
Motor Home or House Car	217	0.095%	0	45	172
Vehicle With Special Controls (Dual, Etc.)	1	0.000%	0	1	0
Emergency Vehicle (Includes Privately Owned)	121	0.053%	2	40	79
Military	5	0.002%	0	2	3
Other Types Of Vehicles	303	0.133%	6	115	182
Vehicle Type Not Reported	5,053	2.215%	45	884	4,124
TOTAL	228,113	100.00%	1,289	71,613	155,211

Section 5: – Motor Vehicle and Driver Descriptions

Table 5 - 3

Hit and Run Drivers Involved in Crashes

Hit and Run	Incident Counts				Person Counts	
	Total	Fatal	Injury	PDO	Killed	Injured
Yes	13,650	57	2,667	10,926	62	3,624
No	105,938	785	34,513	70,640	875	52,385
TOTAL	119,588	842	37,180	81,566	937	56,009

Table 5 - 4

Gender of Drivers Involved in Crashes

Gender of Driver	Driver Counts							
	Total	Percent of Total	Fatal	Percent of Fatal	Injury	Percent of Injury	PDO	Percent of PDO
Male	124,428	54.55%	878	68.11%	39,042	54.52%	84,508	54.45%
Female	90,267	39.57%	340	26.38%	30,503	42.59%	59,424	38.29%
Not Reported	13,418	5.88%	71	5.51%	2,068	2.89%	11,279	7.27%
TOTAL	228,113	100.00%	1,289	100.00%	71,613	100.00%	155,211	100.00%

Table 5 - 5

License Status of Drivers Involved in Crashes

License Status of Driver	Driver Counts							
	Total	Percent of Total	Fatal	Percent of Fatal	Injury	Percent of Injury	PDO	Percent of PDO
Arizona License	183,842	80.59%	929	72.07%	59,568	83.18%	123,345	79.47%
All Others*	44,271	19.41%	360	27.93%	12,045	16.82%	31,866	20.53%
TOTAL	228,113	100.00%	1,289	100.00%	71,613	100.00%	155,211	100.00%

*Includes drivers that have a suspended, revoked, out-of-state or country license, as well as drivers with no license or unknown license type

Table 5 - 6

Passengers Killed and Injured by Age and Gender*

Age of Passenger	Passengers Killed			Passengers Injured			
	Total	Male	Female	Total	Male	Female	Gender Unknown
0-4	7	3	4	1,152	579	573	0
5-9	5	2	3	1,301	608	692	1
10-14	11	6	5	1,466	660	806	0
15-19	39	24	15	2,816	1,131	1,683	2
20-24	47	32	15	1,822	786	1,036	0
25-34	40	24	16	2,003	808	1,195	0
35-44	32	24	8	1,475	528	947	0
45-54	31	18	13	1,282	385	897	0
55-64	16	6	10	998	255	743	0
65-74	15	2	13	618	138	480	0
75 & Older	13	6	7	518	134	384	0
Not Stated	2	2	0	604	217	349	38
TOTAL	258	149	109	16,055	6,229	9,785	41

*Does not include passengers of Motorcycles, Mopeds, or Motorscooters

Section 5: – Motor Vehicle and Driver Descriptions

Table 5 - 7

Drivers and Occupants Killed and Injured by Vehicle Type

Motor Vehicle Type	Drivers		Occupants	
	Killed	Injured	Killed	Injured
Passenger Car (Includes cars with trailer)	250	26,174	177	11,736
Pickup Truck and Vans	103	6,808	51	3,731
Pickup Truck With Camper	1	14	3	11
Other Vehicle With Camper	0	0	0	0
Truck Tractor Only	0	6	0	1
Truck Tractor and Semi-Trailer	7	224	6	69
Other Truck Combination	5	182	0	59
Farm Tractor and/or Farm Equipment	0	5	0	4
Taxicab	0	1	0	0
Commercial Bus	0	14	3	80
Non-Commercial Bus	0	36	0	116
School Bus	0	26	0	95
Motorcycle (two or three wheel)	132	2,739	8	265
Motorscooter or Motor Bicycle (Includes ATV)	13	19	4	7
Moped	0	13	0	0
Recreational Vehicle	0	13	0	6
Motor Home or House Car	0	13	0	13
Vehicle With Special Controls (Dual, Etc.)	0	1	0	0
Emergency Vehicle (Includes Privately Owned)	0	32	0	8
Military	0	2	0	1
Other Types Of Vehicles	5	61	0	26
Vehicle Type Not Reported	8	174	18	99
TOTAL	524	36,557	270	16,327

Table 5 - 8

Drivers Killed and Injured by Age and Gender*

Age of Driver	Drivers Killed			Drivers Injured			Gender Unknown
	Total	Male	Female	Total	Male	Female	
0-4	0	0	0	0	0	0	0
5-9	0	0	0	0	0	0	0
10-14	0	0	0	25	14	11	0
15-19	28	19	9	3,533	1,628	1,905	0
20-24	55	42	13	4,779	2,204	2,575	0
25-34	71	49	22	7,376	3,424	3,952	0
35-44	43	30	13	5,967	2,777	3,190	0
45-54	56	29	27	5,245	2,390	2,855	0
55-64	54	41	13	3,604	1,670	1,934	0
65-74	27	21	6	1,771	913	858	0
75 & Older	45	34	11	1,211	626	585	0
Not Stated	0	0	0	275	158	100	17
TOTAL	379	265	114	33,786	15,804	17,965	17

*Does not include drivers of Motorcycles, Mopeds, or Motorscooters

Section 5: – Motor Vehicle and Driver Descriptions

Table 5 - 9

Licensed Drivers in Arizona by Age

Driver Age Group	Male Number	Percent	Female Number	Percent	Total Number	Percent	Cumulative Percent
16	10,283	0.47%	9,437	0.44%	19,720	0.45%	0.45%
17	19,335	0.88%	17,968	0.83%	37,303	0.86%	1.31%
18	27,889	1.27%	25,626	1.18%	53,515	1.23%	2.53%
19	31,819	1.45%	29,356	1.36%	61,175	1.40%	3.94%
20	32,974	1.50%	31,753	1.47%	64,727	1.48%	5.42%
21	34,023	1.55%	32,691	1.51%	66,714	1.53%	6.95%
22	34,862	1.59%	34,179	1.58%	69,041	1.58%	8.54%
23	36,449	1.66%	36,579	1.69%	73,028	1.67%	10.21%
24	37,284	1.70%	37,250	1.72%	74,534	1.71%	30.64%
25-34	414,244	18.87%	402,323	18.58%	816,567	18.73%	30.64%
35-44	437,785	19.94%	406,444	18.77%	844,229	19.36%	50.00%
45-54	423,905	19.31%	420,009	19.40%	843,914	19.35%	69.36%
55-64	337,391	15.37%	348,937	16.12%	686,328	15.74%	85.10%
65-74	190,612	8.68%	196,430	9.07%	387,042	8.88%	93.97%
75 & older	126,932	5.78%	135,942	6.28%	262,874	6.03%	100.00%
TOTALS	2,195,787	100.00%	2,164,924	100.00%	4,360,711	100.00%	100.00%

Source: MVD - MV708 MV650653-1, Point-in-Time Driver Credential Report/All Driver Licenses by Age, Gender, & Class (page 19), dated 1/2/2009.

Table 5 - 10

Driver Involvement by Age

Driver Age Group	Driver Counts							
	Total	Percent of Total	Fatal	Percent of Fatal	Injury	Percent of Injury	PDO	Percent of PDO
15 & Under	480	0.21%	6	0.47%	193	0.27%	281	0.18%
16	3,547	1.55%	14	1.09%	1,106	1.54%	2,427	1.56%
17	5,439	2.38%	20	1.55%	1,703	2.38%	3,716	2.39%
18	7,131	3.13%	41	3.18%	2,312	3.23%	4,778	3.08%
19	6,971	3.06%	30	2.33%	2,239	3.13%	4,702	3.03%
20	6,502	2.85%	40	3.10%	2,116	2.95%	4,346	2.80%
21	6,050	2.65%	42	3.26%	1,984	2.77%	4,024	2.59%
22	5,936	2.60%	30	2.33%	1,968	2.75%	3,938	2.54%
23	5,734	2.51%	34	2.64%	1,875	2.62%	3,825	2.46%
24	5,499	2.41%	31	2.40%	1,785	2.49%	3,683	2.37%
25-34	46,305	20.30%	227	17.61%	14,995	20.94%	31,083	20.03%
35-44	38,829	17.02%	213	16.52%	12,510	17.47%	26,106	16.82%
45-54	33,092	14.51%	191	14.82%	10,740	15.00%	22,161	14.28%
55-64	21,424	9.39%	144	11.17%	7,054	9.85%	14,226	9.17%
65-74	10,559	4.63%	77	5.97%	3,508	4.90%	6,974	4.49%
75 & Older	6,887	3.02%	66	5.12%	2,324	3.25%	4,497	2.90%
Not Stated	17,728	7.77%	83	6.44%	3,201	4.47%	14,444	9.31%
TOTAL	228,113	100.00%	1,289	100.00%	71,613	100.00%	155,211	100.00%

Section 5: – Motor Vehicle and Driver Descriptions

Table 5 - 11

Driver Errors

Type of Violation or Behavior	Driver Counts							
	Total	Percent of Total Drivers	Fatal	Percent of Fatal Drivers	Injury	Percent of Injury Drivers	PDO	Percent of PDO Drivers
No Improper Driving	106,240	46.57%	459	35.61%	34,231	47.80%	71,550	46.10%
Speeding*	41,567	18.22%	304	23.58%	13,653	19.06%	27,610	17.79%
Exceeded Lawful Speed	1,105	0.48%	53	4.11%	499	0.70%	553	0.36%
Failed to Yield Right-Of-Way	21,370	9.37%	87	6.75%	8,097	11.31%	13,186	8.50%
Followed Too Closely	4,568	2.00%	1	0.08%	1,245	1.74%	3,322	2.14%
Ran Stop Sign	977	0.43%	13	1.01%	413	0.58%	551	0.36%
Disregarded Traffic Signal	4,130	1.81%	19	1.47%	1,985	2.77%	2,126	1.37%
Made Improper Turn	3,563	1.56%	4	0.31%	756	1.06%	2,803	1.81%
Drove in Opposing Lane	1,115	0.49%	50	3.88%	453	0.63%	612	0.39%
Operated with Faulty Equipment	223	0.10%	3	0.23%	59	0.08%	161	0.10%
Required Motorcycle Safety Equipment Not Used	17	0.01%	2	0.16%	14	0.02%	1	0.00%
Passed in No-Passing Zone	86	0.04%	1	0.08%	27	0.04%	58	0.04%
Unsafe Lane Change	6,601	2.89%	7	0.54%	963	1.34%	5,631	3.63%
Other Unsafe Passing	820	0.36%	6	0.47%	162	0.23%	652	0.42%
Inattention	14,252	6.25%	55	4.27%	3,724	5.20%	10,473	6.75%
Other	8,429	3.70%	76	5.90%	2,169	3.03%	6,184	3.98%
Unknown	13,050	5.72%	149	11.56%	3,163	4.42%	9,738	6.27%
TOTAL	228,113	100.00%	1,289	100.00%	71,613	100.00%	155,211	100.00%

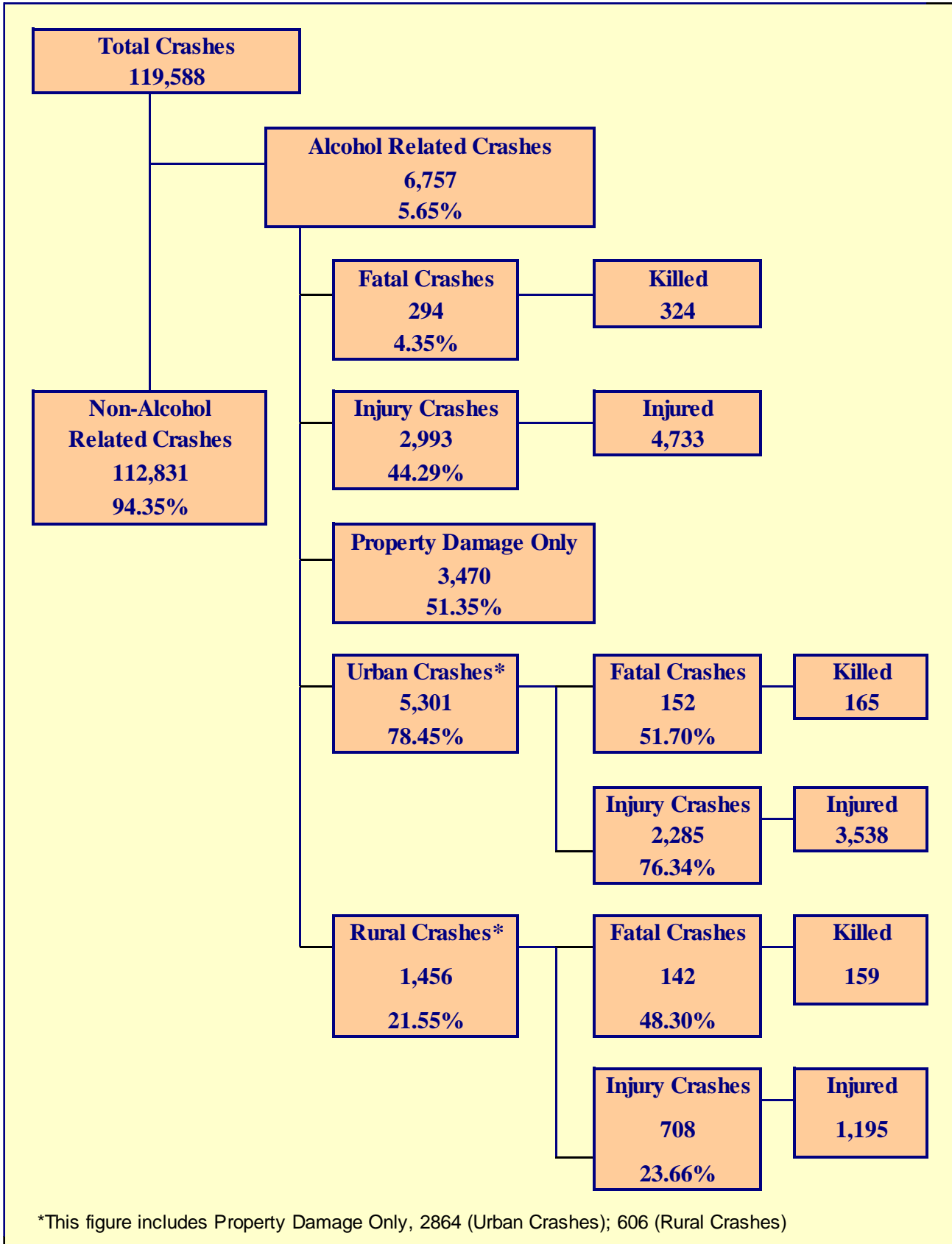
*Driving too fast for conditions

Table 5 - 12

Driver Physical Condition

Type of Condition	Driver Counts							
	Total	Percent of Total Drivers	Fatal	Percent of Fatal Drivers	Injury	Percent of Injury Drivers	PDO	Percent of PDO Drivers
No Apparent Influence	194,136	85.11%	666	51.67%	61,374	85.70%	132,096	85.11%
Had Been Drinking	6,568	2.88%	244	18.93%	2,828	3.95%	3,496	2.25%
Appeared to be Under Influence of Drugs*	305	0.13%	31	2.40%	148	0.21%	126	0.08%
Ill-Ability Influenced	343	0.15%	4	0.31%	204	0.28%	135	0.09%
Sleepy-Fatigued	1,332	0.58%	23	1.78%	601	0.84%	708	0.46%
Physical Impairment	193	0.08%	2	0.16%	114	0.16%	77	0.05%
Prescription Drugs	379	0.17%	6	0.47%	142	0.20%	231	0.15%
Other	2,447	1.07%	12	0.93%	726	1.01%	1,709	1.10%
Unknown	18,171	7.97%	279	21.64%	4,452	6.22%	13,440	8.66%
Not Reported	4,239	1.86%	22	1.71%	1,024	1.43%	3,193	2.06%
TOTAL	228,113	100.00%	1,289	100.00%	71,613	100.00%	155,211	100.00%

*Illegal drugs or narcotics



The statistics in the Alcohol Related section represent those crashes where the investigating officer indicated that a driver had consumed alcohol (beverage and may or may not be substantiated) and an assumption is to be made that the person was (with a blood alcohol content of 0.08% or higher) at the time of the crash.

Table 6 - 1

Economic Loss Due to Alcohol Related Crashes in Arizona for 2008

Fatalities	\$373,442,400
Incapacitating Injuries	\$55,294,200
Non-Incapacitating Injuries	\$43,504,020
Possible Injuries	\$22,673,784
Property Damage Only	\$26,545,500
TOTAL	\$521,459,904

Refer to note on Page 4 for Economic Loss Estimates

Table 6 - 2

Alcohol Related Crash History

Year	Alcohol Related Crashes	Percent of all Crashes	Persons Killed	Percent of all Fatalities	Persons Injured	Percent of all Injuries
2004	8,352	6.01%	292	25.19%	6,538	8.87%
2005	8,055	5.73%	278	23.30%	6,165	8.67%
2006	8,196	5.73%	384	29.54%	5,940	8.51%
2007	7,934	5.62%	397	37.07%	5,531	8.38%
2008	6,757	5.65%	324	34.58%	4,733	8.45%

Table 6 - 3

Manner of Collision in Alcohol Related Crashes

Manner of Collision Type	Number of Crashes							
	Total	Percent of All Crashes	Fatal	Percent of Fatal Crashes	Injury	Percent of Injury Crashes	PDO	Percent of PDO Crashes
Sideswipe (same)	439	11.99%	8	8.33%	134	8.36%	297	15.13%
Sideswipe (opposite)	151	4.12%	3	3.13%	51	3.18%	97	4.94%
Angle	620	16.94%	22	22.92%	300	18.73%	298	15.18%
Left Turn	366	10.00%	13	13.54%	223	13.92%	130	6.62%
Rear-End	1,603	43.79%	19	19.79%	719	44.88%	865	44.07%
Head-On	157	4.29%	16	16.67%	84	5.24%	57	2.90%
Backing	103	2.81%	0	0.00%	4	0.25%	99	5.04%
Other	158	4.32%	13	13.54%	63	3.93%	82	4.18%
Non-Contact (MC)	1	0.03%	0	0.00%	1	0.06%	0	0.00%
Non-Contact (not MC)	10	0.27%	2	2.08%	4	0.25%	4	0.20%
U-Turn	53	1.45%	0	0.00%	19	1.19%	34	1.73%
TOTAL	3,661	100.00%	96	100.00%	1,602	100.00%	1,963	100.00%

Section 6: – Alcohol Related Crashes

Table 6 - 4

Alcohol Related Crashes by First Harmful Event

FHE Type	Number of Crashes				Number of Persons	
	Total	Fatal	Injury	PDO	Killed	Injured
Overturning	388	70	241	77	78	405
Collision with other Motor Vehicle	3,105	84	1,432	1,589	98	2,701
Collision with Pedestrian	253	60	180	13	60	201
Collision with Pedalcyclist	86	3	75	8	3	78
Collision with MV on other Rdway	3	1	2	0	1	5
Animal	6	0	2	4	0	2
Fixed Object	2,243	65	833	1,345	73	1,071
Object in Roadway	5	0	2	3	0	3
Other*	477	6	128	343	6	153
Miscellaneous**	191	5	98	88	5	114
TOTAL	6,757	294	2,993	3,470	324	4,733
*Includes Collision with Parked Vehicles, Trains, Machinery, and Unknown Objects						
**Includes Collision with Special Devices, Objects dropped from vehicles, Non-fixed Objects, as well as Vehicle Fires						

Table 6 - 5

Alcohol Related Crashes by Vehicle Type

Motor Vehicle Type	Vehicle Counts				
	Total	Percent	Fatal	Injury	PDO
Passenger Car (Includes cars with trailer)	4,530	68.971%	133	1,852	2,545
Pickup Trucks and Vans	1,667	25.381%	61	726	880
Pickup Truck With Camper	4	0.061%	0	2	2
Other Vehicle With Camper	0	0.000%	0	0	0
Truck Tractor Only	0	0.000%	0	0	0
Truck Tractor and Semi-Trailer	7	0.107%	0	3	4
Other Truck Combination	22	0.335%	0	7	15
Farm Tractor and/or Farm Equipment	0	0.000%	0	0	0
Taxicab	0	0.000%	0	0	0
Commercial Bus	1	0.015%	0	0	1
Non-Commercial Bus	1	0.015%	0	0	1
School Bus	0	0.000%	0	0	0
Motorcycle (two or three wheel)	259	3.943%	35	210	14
Motorscooter or Motor Bicycle (Includes ATV)	11	0.167%	8	3	0
Moped	1	0.015%	0	1	0
Recreational Vehicle	2	0.030%	0	1	1
Motor Home or House Car	0	0.000%	0	0	0
Vehicle With Special Controls (Dual, Etc.)	0	0.000%	0	0	0
Emergency Vehicle (Inc. Privately Owned)	0	0.000%	0	0	0
Military	0	0.000%	0	0	0
Other Types Of Vehicles	8	0.122%	1	6	1
Vehicle Type Not Reported	55	0.837%	6	17	32
TOTAL	6,568	100.00%	244	2,828	3,496

Table 6 - 6

Lighting Conditions in Alcohol Related Crashes

Type of Lighting Conditions	Incident Counts				Person Counts	
	Total	Fatal	Injury	PDO	Killed	Injured
Daylight	1,957	56	883	1,018	63	1,373
Dawn or Dusk	359	31	168	160	31	264
Darkness	4,427	206	1,940	2,281	229	3,091
Not Reported	14	1	2	11	1	5
TOTAL	6,757	294	2,993	3,470	324	4,733

Table 6 - 7

Road Surface Conditions in Alcohol Related Crashes

Type of Road Surface Condition	Incident Counts				Person Counts	
	Total	Fatal	Injury	PDO	Killed	Injured
Dry	6,204	257	2,789	3,158	285	4,395
Wet	378	12	132	234	12	211
Not Reported, No Unusual Condition	83	21	32	30	23	55
Sand, Mud, Dirt, Oil or Gravel	47	3	25	19	3	42
Snow	12	0	5	7	0	7
Slush	4	0	2	2	0	4
Ice	17	0	4	13	0	5
Other	4	1	2	1	1	12
Unknown	8	0	2	6	0	2
TOTAL	6,757	294	2,993	3,470	324	4,733

Table 6 - 8

Gender of Drivers Involved in Alcohol Related Crashes

Gender of Driver	Driver Counts							
	Total	Percent of Total	Fatal	Percent of Fatal	Injury	Percent of Injury	PDO	Percent of PDO
Male	4,949	75.35%	196	80.33%	2,147	75.92%	2,606	74.54%
Female	1,529	23.28%	45	18.44%	664	23.48%	820	23.46%
Not Reported	90	1.37%	3	1.23%	17	0.60%	70	2.00%
TOTAL	6,568	100.00%	244	100.00%	2,828	100.00%	3,496	100.00%

In total crashes across the state, 54.55% of the drivers were males. When alcohol was involved, males accounted for 75.35% of the drivers.

Section 6: – Alcohol Related Crashes

Table 6 - 9

Driver Involvement by Age in Alcohol Related Crashes

Driver Age Group	Driver Counts							
	Total	Percent of Total	Fatal	Percent of Fatal	Injury	Percent of Injury	PDO	Percent of PDO
15 & Under	11	0.17%	1	0.41%	7	0.25%	3	0.09%
16	39	0.59%	1	0.41%	11	0.39%	27	0.77%
17	111	1.69%	9	3.69%	42	1.49%	60	1.72%
18	208	3.17%	9	3.69%	98	3.47%	101	2.89%
19	192	2.92%	7	2.87%	79	2.79%	106	3.03%
20	213	3.24%	8	3.28%	80	2.83%	125	3.58%
21	292	4.45%	16	6.56%	122	4.31%	154	4.41%
22	296	4.51%	12	4.92%	130	4.60%	154	4.41%
23	297	4.52%	10	4.10%	126	4.46%	161	4.61%
24	256	3.90%	16	6.56%	114	4.03%	126	3.60%
25-34	1,833	27.91%	65	26.64%	789	27.90%	979	28.00%
35-44	1,194	18.18%	34	13.93%	547	19.34%	613	17.53%
45-54	924	14.07%	34	13.93%	410	14.50%	480	13.73%
55-64	380	5.79%	10	4.10%	155	5.48%	215	6.15%
65-74	115	1.75%	3	1.23%	57	2.02%	55	1.57%
75 & Older	46	0.70%	3	1.23%	25	0.88%	18	0.51%
Not Stated	161	2.45%	6	2.46%	36	1.27%	119	3.40%
TOTAL	6,568	100.00%	244	100.00%	2,828	100.00%	3,496	100.00%

Table 6 - 10

When Alcohol Related Crashes Occurred in 2008

Time of Day	Total	Weekday	Weekend*
Daytime**	1,907	1,193	714
Nighttime	4,850	1,896	2,954
Total	6,757	3,089	3,668
*Weekend begins at 6:00 p.m. on Friday and continues through 6:00 a.m. Monday. All other times and days are considered Weekdays.			
**Day time refers to the hours between 6:00 a.m. and 6:00 p.m.			

Table 6 - 11

Restraint Usage for Drinking Drivers

Severity of Injury	Not Reported	None Used	Lap Belt	Lap & Shoulder	Passive Belt	Passive & Lap	Protective Helmet	Other
No Injury	1,279	292	27	2,544	0	1	3	8
Unknown Injury	190	8	1	38	0	0	0	0
Possible Injury	237	95	7	300	0	0	3	0
Non-Incapacitating Injury	293	222	8	421	1	0	19	1
Incapacitating Injury	128	163	1	108	0	0	18	0
Fatal Injury	29	91	0	19	0	0	12	1
TOTALS	2,156	871	44	3,430	1	1	55	10

Table 6 - 12

Persons Killed and Injured in Alcohol Related Crashes

Age of Victim	Persons Killed			Persons Injured			
	Total	Male	Female	Total	Male	Female	Gender Unknown
0-4	0	0	0	76	36	40	0
5-9	2	0	2	80	39	41	0
10-14	4	3	1	99	49	50	0
15-19	36	24	12	557	323	234	0
20-24	63	55	8	893	569	324	0
25-34	72	59	13	1,112	729	383	0
35-44	46	36	10	764	496	268	0
45-54	55	41	14	611	371	240	0
55-64	28	24	4	266	159	107	0
65-74	13	10	3	118	77	41	0
75 & Older	5	3	2	59	36	23	0
Not Stated	0	0	0	98	65	27	6
TOTAL	324	255	69	4,733	2,949	1,778	6

Table 6 - 13

Alcohol Related Crashes by County

County	Number of Crashes				Number of Persons	
	Total	Fatal	Injury	PDO	Killed	Injured
Apache	69	14	31	24	17	88
Cochise	108	8	49	51	8	78
Coconino	197	8	71	118	9	116
Gila	68	6	36	26	7	51
Graham	40	4	22	14	6	31
Greenlee	10	2	5	3	2	6
La Paz	29	5	13	11	5	21
Maricopa	4,240	122	1,843	2,275	132	2,888
Mohave	257	18	113	126	23	174
Navajo	106	12	47	47	13	82
Pima	984	58	445	481	62	721
Pinal	201	17	99	85	18	159
Santa Cruz	28	1	15	12	1	23
Yavapai	223	10	106	107	10	154
Yuma	197	9	98	90	11	141
TOTAL	6,757	294	2,993	3,470	324	4,733

Section 6: – Alcohol Related Crashes

Chart 6 - 1

All Alcohol Related Crashes vs. Fatal Alcohol Related Crashes by Day of Week

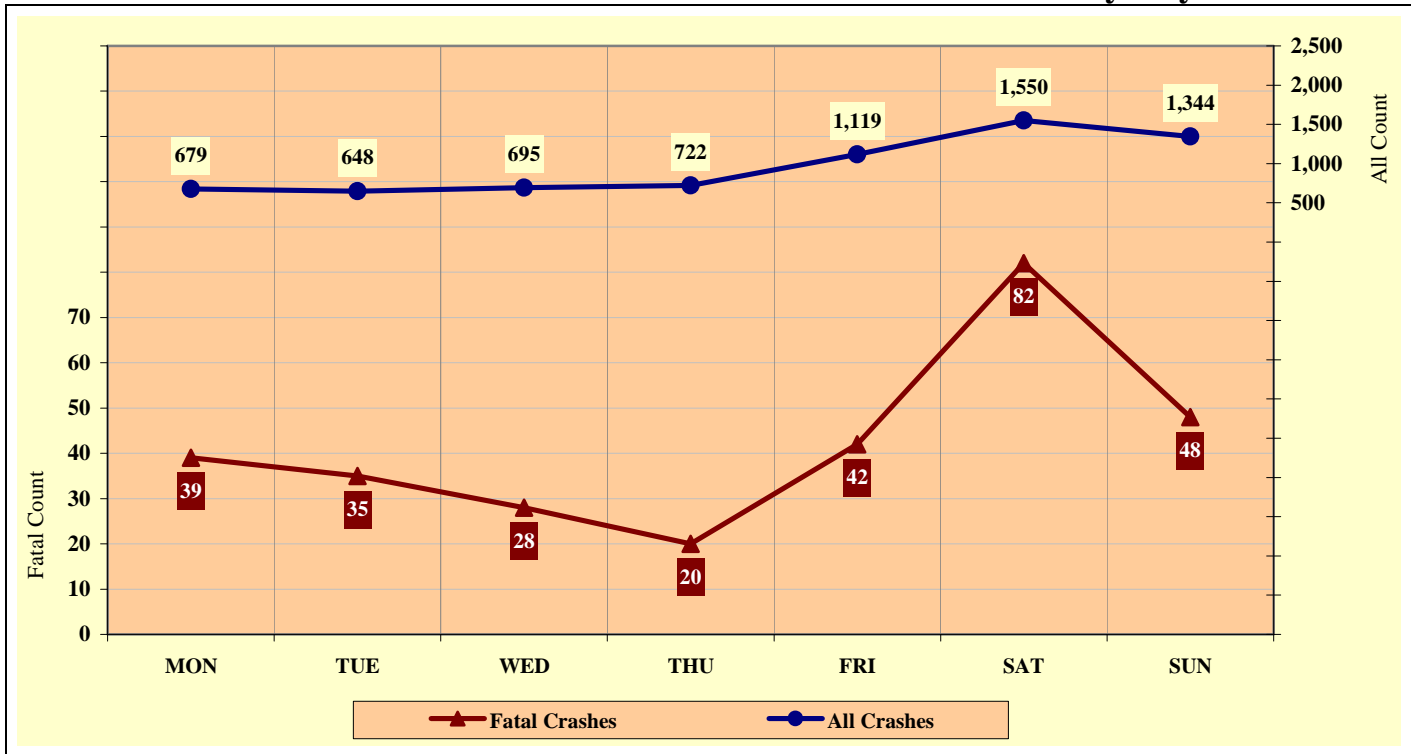


Chart 6 - 2

All Alcohol Related Crashes vs. Fatal Alcohol Related Crashes by Month

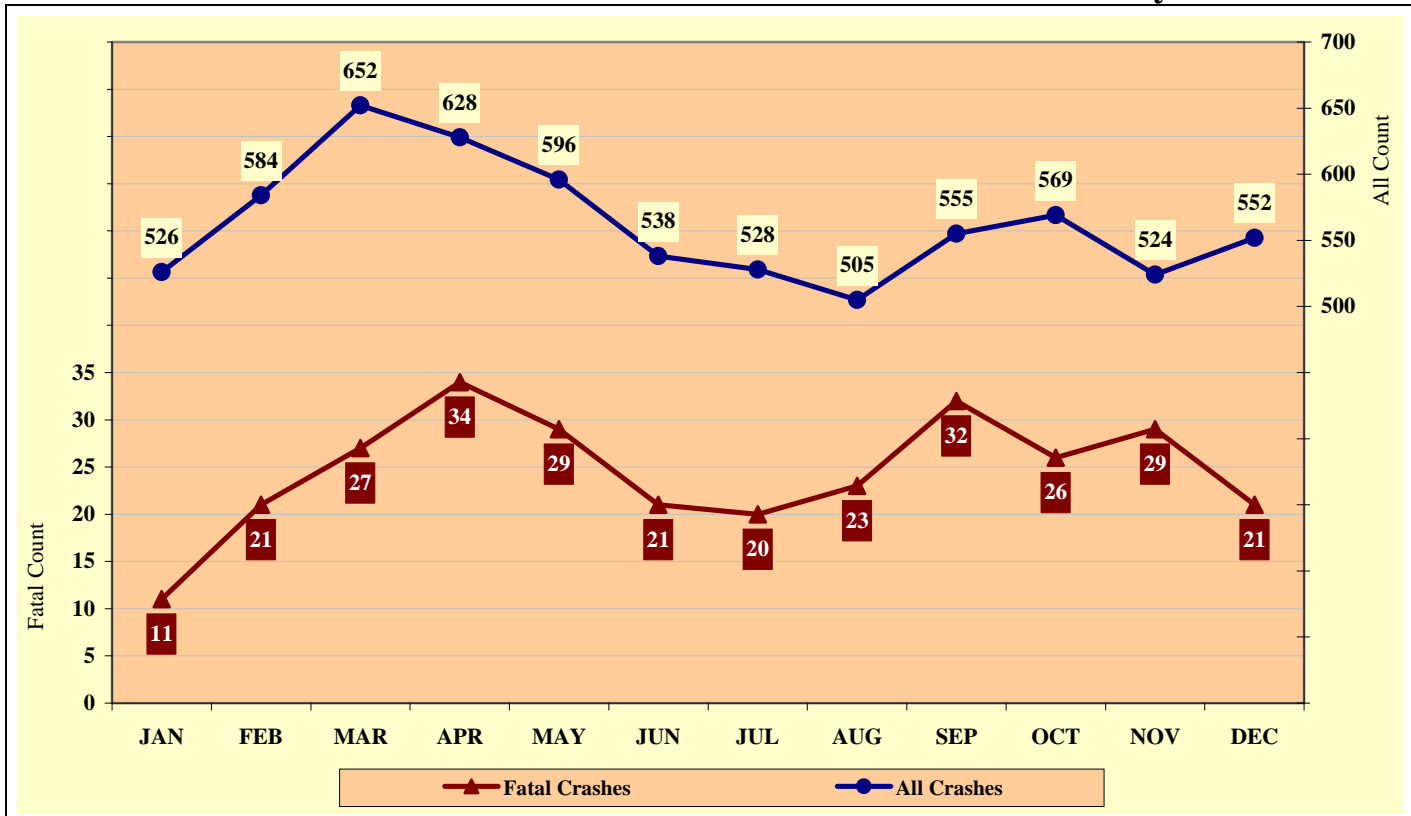


Chart 6 - 3

All Alcohol Related Crashes vs. Fatal Alcohol Related Crashes - Weekdays

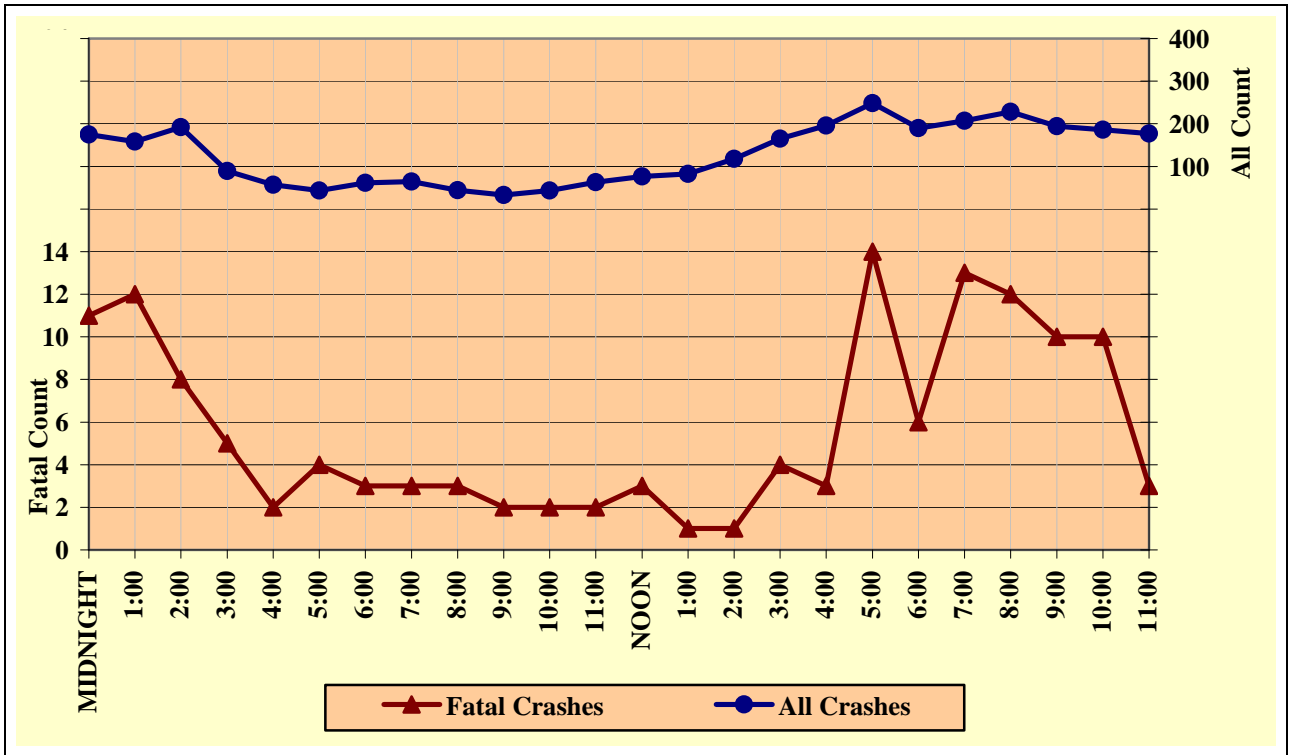
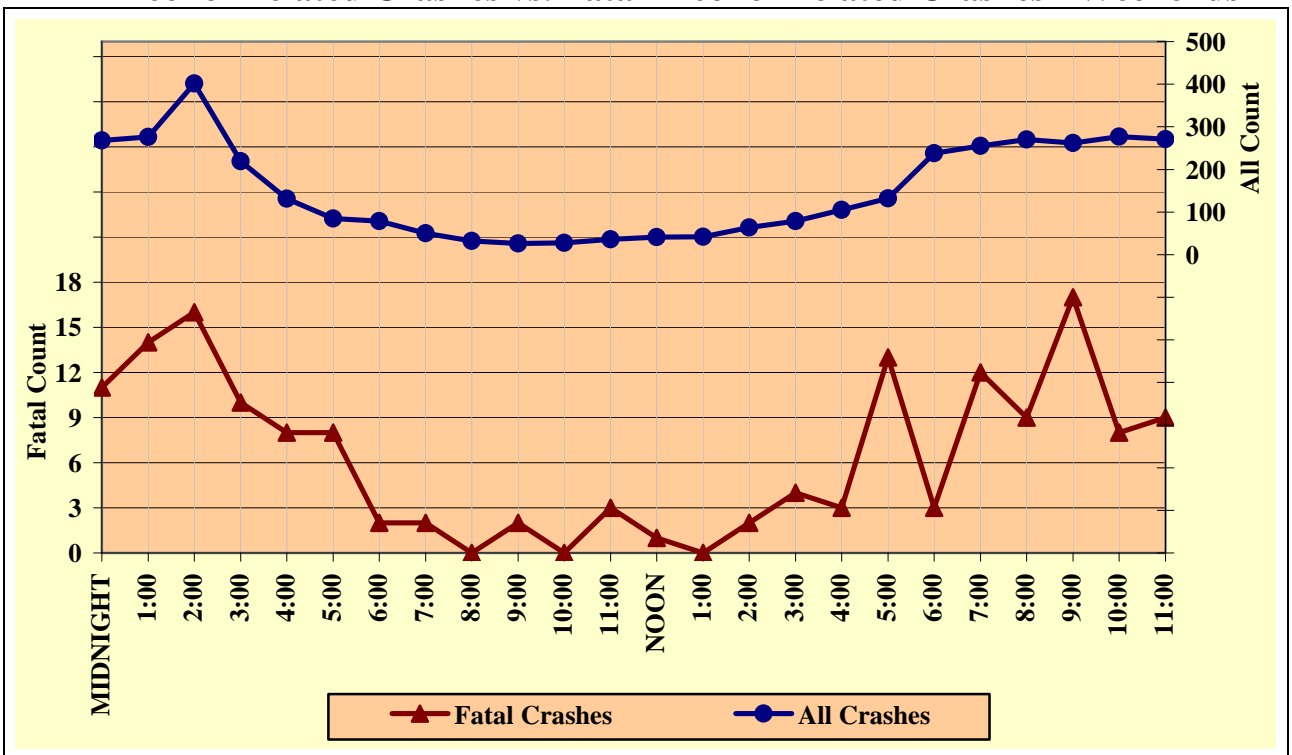


Chart 6 - 4

All Alcohol Related Crashes vs. Fatal Alcohol Related Crashes - Weekends



Section 6: – Alcohol Related Crashes

Table 6 - 14

Alcohol Related Crashes by Hour and Day of Week

Hour Beginning	Total Crashes		Monday		Tuesday		Wednesday		Thursday		Friday		Saturday		Sunday		Weekdays		Weekends	
	All	Fatal	All	Fatal	All	Fatal	All	Fatal	All	Fatal	All	Fatal	All	Fatal	All	Fatal	All	Fatal	All	Fatal
MIDNIGHT	443	22	34	0	44	1	31	4	48	3	52	3	111	7	123	4	175	11	268	11
1:00	434	26	42	2	38	5	30	2	39	3	51	2	119	11	115	1	158	12	276	14
2:00	594	24	47	3	34	1	46	0	44	3	68	4	171	7	184	6	192	8	402	16
3:00	308	15	18	2	19	1	19	2	19	0	32	2	109	4	92	4	89	5	219	10
4:00	188	10	17	0	19	0	8	1	15	1	15	0	57	5	57	3	57	2	131	8
5:00	128	12	14	2	14	2	8	2	12	0	9	0	31	1	40	5	43	4	85	8
6:00	140	5	13	1	11	0	13	1	2	0	22	1	47	2	32	0	61	3	79	2
7:00	114	5	24	2	11	0	5	0	15	0	9	1	26	2	24	0	64	3	50	2
8:00	76	3	10	0	6	1	8	0	11	0	9	2	12	0	20	0	44	3	32	0
9:00	59	4	9	0	6	2	8	0	3	0	7	0	18	1	8	1	33	2	26	2
10:00	71	2	11	1	10	0	9	0	7	0	6	1	14	0	14	0	43	2	28	0
11:00	99	5	14	1	12	0	9	0	14	1	14	0	24	2	12	1	63	2	36	3
NOON	117	4	13	1	13	0	18	1	12	0	20	1	22	1	19	0	76	3	41	1
1:00	124	1	17	0	17	0	17	0	10	0	21	1	26	0	16	0	82	1	42	0
2:00	182	3	22	0	35	1	18	0	19	0	24	0	35	2	29	0	118	1	64	2
3:00	244	8	41	0	29	1	25	3	37	0	33	0	45	3	34	1	165	4	79	4
4:00	301	6	35	0	28	2	38	0	32	0	63	1	59	1	46	2	196	3	105	3
5:00	380	27	49	1	41	3	49	2	47	3	62	5	69	9	63	4	248	14	132	13
6:00	428	9	41	2	47	3	49	1	53	0	87	1	72	1	79	1	190	6	238	3
7:00	462	25	45	4	53	6	59	3	50	0	81	2	92	7	82	3	207	13	255	12
8:00	498	21	44	7	60	3	67	2	57	0	108	3	86	4	76	2	228	12	270	9
9:00	456	27	43	3	34	2	55	2	62	3	97	5	91	7	74	5	194	10	262	17
10:00	463	18	38	6	35	0	54	2	59	2	116	3	104	2	57	3	186	10	277	8
11:00	448	12	38	1	32	1	52	0	55	1	113	4	110	3	48	2	177	3	271	9
TOTAL	6,757	294	679	39	648	35	695	28	722	20	1,119	42	1,550	82	1,344	48	3,089	137	3,668	157

Crashes during Weekends accounted for 54.28% of all Alcohol Related crashes and 53.40% of Alcohol Related Fatal Crashes.

Crashes during Weekdays accounted for 45.72% of all Alcohol Related crashes and 46.60% of Alcohol Related Fatal Crashes.

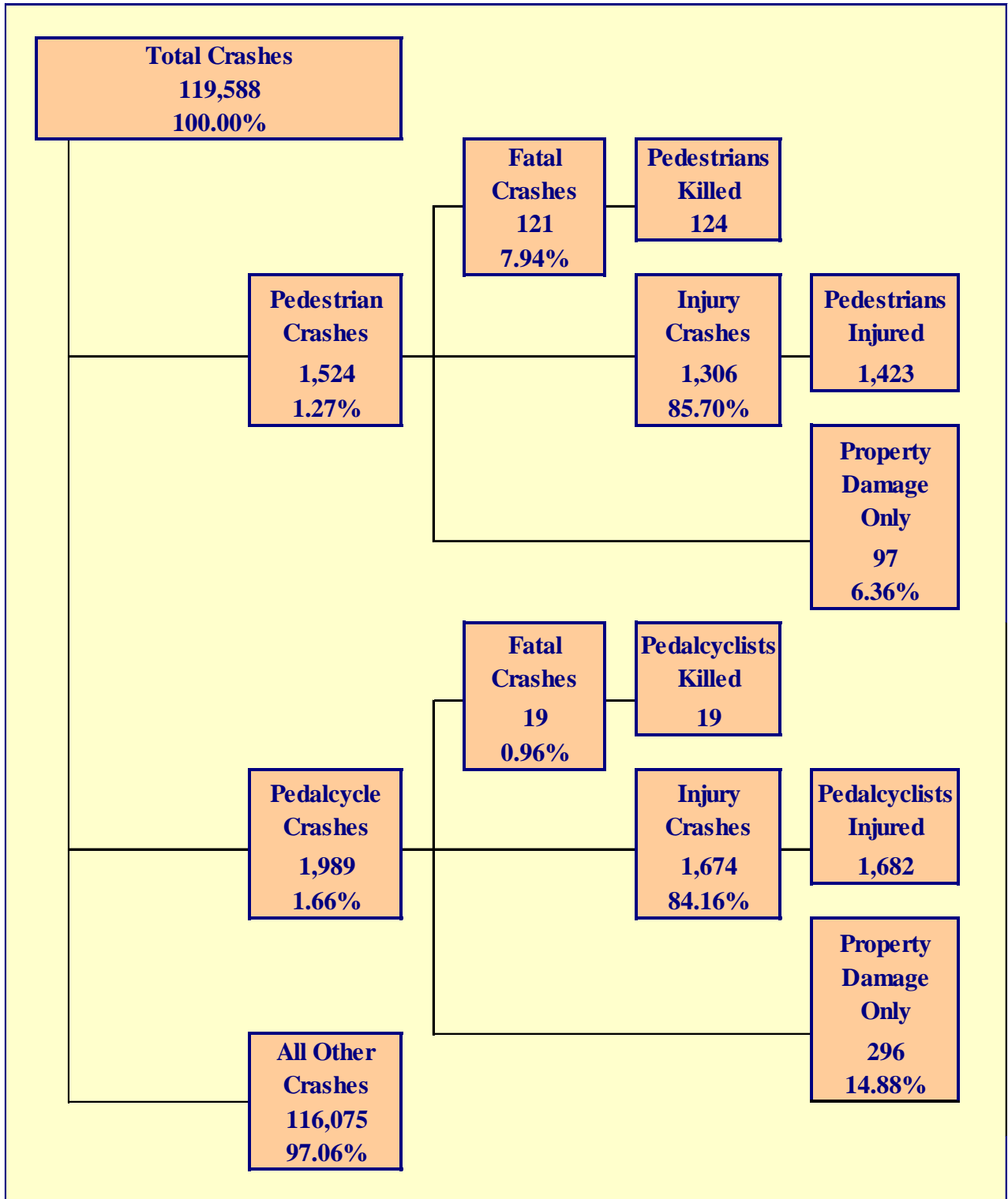


Table 7 - 1

Pedestrians Killed and Injured By Age and Gender

Age Group	Pedestrians Killed			Pedestrians Injured			
	Total	Male	Female	Total	Male	Female	Gender Unknown
0-4	1	1	0	32	20	12	0
5-9	1	1	0	68	41	27	0
10-14	2	1	1	113	69	44	0
15-19	8	5	3	216	107	109	0
20-24	7	5	2	137	79	58	0
25-34	12	7	5	198	136	62	0
35-44	19	15	4	175	109	66	0
45-54	26	22	4	190	111	79	0
55-64	25	17	8	109	64	45	0
65-74	13	9	4	58	37	21	0
75 & Older	10	8	2	56	29	27	0
Not Stated	0	0	0	71	43	25	3
TOTAL	124	91	33	1,423	845	575	3

Table 7 - 2

Pedestrian Crashes by Geographic Location

Category	Total	Urban	% of Total	Rural	% of Total
Total Crashes	1,524	1,384	90.81%	140	9.19%
Fatal Crashes	121	87	71.90%	34	28.10%
Injury Crashes	1,306	1,208	92.50%	98	7.50%
PDO Crashes	97	89	91.75%	8	8.25%
Pedestrians Killed	124	89	71.77%	35	28.23%
Pedestrians Injured	1,423	1,306	91.78%	117	8.22%

Table 7 - 3

Pedestrian Crash History

Year	Pedestrian Crashes	Percent of all Crashes	Pedestrians Killed	Percent of all Fatalities	Pedestrians Injured	Percent of all Injuries
2004	1,635	1.18%	135	11.65%	1,573	2.13%
2005	1,594	1.13%	166	13.91%	1,483	2.09%
2006	1,642	1.15%	172	13.23%	1,468	2.10%
2007	1,671	1.18%	157	14.66%	1,540	2.33%
2008	1,524	1.27%	124	13.23%	1,423	2.54%

Table 7 - 4

Pedestrians Killed by Age and Action

Pedestrian Action	Total	Age Group of Pedestrian								
		0-4	5-9	10-14	15-19	20-24	25-44	44-64	65 & Older	Not Stated
Crossing Road	83	1	0	2	5	2	19	35	19	0
Walking With Traffic	3	0	0	0	1	0	1	0	1	0
Walking Against Traffic	3	0	0	0	0	1	0	2	0	0
Standing	4	0	0	0	0	1	0	2	1	0
Lying	5	0	0	0	0	1	4	0	0	0
Getting on/off Vehicle	0	0	0	0	0	0	0	0	0	0
Working on/pushing Veh	3	0	0	0	0	0	2	1	0	0
Working on Road	0	0	0	0	0	0	0	0	0	0
Other	13	0	0	0	1	2	2	7	1	0
Unknown	10	0	1	0	1	0	3	4	1	0
TOTAL	124	1	1	2	8	7	31	51	23	0

Table 7 - 5

Pedestrians Injured by Age and Action

Pedestrian Action	Total	Age Group of Pedestrian								
		0-4	5-9	10-14	15-19	20-24	25-44	44-64	65 & Older	Not Stated
Crossing Road	809	17	42	65	132	71	218	167	64	33
Walking With Traffic	78	0	3	2	15	9	18	23	4	4
Walking Against Traffic	96	1	3	7	12	11	30	22	7	3
Standing	76	4	0	8	5	3	31	14	5	6
Lying	3	0	0	0	0	0	0	1	1	1
Getting on/off Vehicle	13	1	4	3	0	0	2	2	1	0
Working on/pushing Veh	14	0	0	0	0	1	6	6	0	1
Working on Road	13	0	0	1	1	1	4	5	0	1
Other	246	8	13	20	43	32	48	45	24	13
Unknown	75	1	3	7	8	9	16	14	8	9
TOTAL	1,423	32	68	113	216	137	373	299	114	71

Table 7 - 6

Pedestrian Physical Condition in Motor Vehicle Crashes

Type of Condition	Pedestrian Counts									
	Total	Percent of Total	Fatal	Percent of Fatal	Injury	Percent of Injury	PDO	Percent of PDO	Unknown	Percent of Unknown
No Apparent Influence	998	59.83%	27	21.77%	895	62.90%	65	67.71%	11	44.00%
Had Been Drinking	226	13.55%	53	42.74%	161	11.31%	12	12.50%	0	0.00%
Appeared To Be Under The Influence of Drugs*	6	0.36%	3	2.42%	3	0.21%	0	0.00%	0	0.00%
Ill-Ability Influenced	0	0.00%	0	0.00%	0	0.00%	0	0.00%	0	0.00%
Sleepy-Fatigued	1	0.06%	0	0.00%	1	0.07%	0	0.00%	0	0.00%
Physical Impairment	14	0.84%	1	0.81%	11	0.77%	1	1.04%	1	4.00%
Prescription Drugs	1	0.06%	0	0.00%	1	0.07%	0	0.00%	0	0.00%
Other	34	2.04%	2	1.61%	31	2.18%	0	0.00%	1	4.00%
Unknown	248	14.87%	35	28.23%	200	14.05%	10	10.42%	3	12.00%
Not Reported	140	8.39%	3	2.42%	120	8.43%	8	8.33%	9	36.00%
TOTAL	1,668	100.00%	124	100.00%	1,423	100.00%	96	100.00%	25	100.00%

*Illegal drugs or narcotics

Section 7: – Pedestrian and Pedalcyclist Crashes

Table 7 - 7

Lighting Conditions in Pedestrian Crashes

Type of Lighting Conditions	Incident Counts			
	Total	Fatal	Injury	PDO
Daylight	892	23	802	67
Dawn or Dusk	87	11	72	4
Darkness	582	85	471	26
Not Reported	8	4	4	0
TOTAL	1,569	123	1,349	97

Table 7 - 8

Weather Conditions in Pedestrian Crashes

Type of Conditions	Incident Counts			
	Total	Fatal	Injury	PDO
Clear	1,369	96	1,187	86
Cloudy	118	10	100	8
Sleet/Hail	0	0	0	0
Rain	54	4	47	3
Snow	4	1	3	0
Severe Crosswinds	1	0	1	0
Blowing Sand, Soil, Dirt, Snow	0	0	0	0
Fog, Smog, Smoke	1	0	1	0
Not Reported	22	12	10	0
TOTAL	1,569	123	1,349	97

Table 7 - 9

Pedalcyclists Killed and Injured by Age and Gender

Age Group	Pedalcyclists Killed			Pedalcyclists Injured			
	Total	Male	Female	Total	Male	Female	Gender Unknown
0-4	0	0	0	4	4	0	0
5-9	1	0	1	54	44	10	0
10-14	1	1	0	225	181	44	0
15-19	1	1	0	252	201	51	0
20-24	0	0	0	199	131	68	0
25-34	1	1	0	216	156	60	0
35-44	6	5	1	233	185	48	0
45-54	5	5	0	251	203	48	0
55-64	2	2	0	129	111	18	0
65-74	2	2	0	51	40	11	0
75 & Older	0	0	0	15	13	2	0
Not Stated	0	0	0	53	44	6	3
TOTAL	19	17	2	1,682	1,313	366	3

Table 7 - 10

Pedalcycle Crashes by Geographic Location

Category	Total	Urban	% of Total	Rural	% of Total
Total Crashes	1,989	1,849	92.96%	140	7.04%
Fatal Crashes	19	14	73.68%	5	26.32%
Injury Crashes	1,674	1,560	93.19%	114	6.81%
PDO Crashes	296	275	92.91%	21	7.09%
Pedalcyclists Killed	19	14	73.68%	5	26.32%
Pedalcyclists Injured	1,682	1,565	93.04%	117	6.96%

Table 7 - 11

Pedalcycle Crash History

Year	Pedalcycle Crashes	Percent of all Crashes	Pedalcyclists Killed	Percent of all Fatalities	Pedalcyclists Injured	Percent of all Injuries
2004	2,005	1.44%	27	2.33%	1,706	2.32%
2005	2,032	1.45%	36	3.02%	1,727	2.43%
2006	1,875	1.31%	29	2.23%	1,555	2.23%
2007	1,921	1.36%	21	1.96%	1,605	2.43%
2008	1,989	1.66%	19	2.03%	1,682	3.00%

Table 7 - 12

Lighting Conditions in Pedalcyclist Crashes

Type of Lighting Conditions	Incident Counts			
	Total	Fatal	Injury	PDO
Daylight	1,549	11	1,313	225
Dawn or Dusk	116	2	94	20
Darkness	313	5	260	48
Not Reported	11	1	7	3
TOTAL	1,989	19	1,674	296

Table 7 - 13

Weather Conditions in Pedalcyclist Crashes

Type of Conditions	Incident Counts			
	Total	Fatal	Injury	PDO
Clear	1,810	14	1,528	268
Cloudy	133	2	110	21
Sleet/Hail	0	0	0	0
Rain	27	0	21	6
Snow	2	0	2	0
Severe Crosswinds	1	0	1	0
Blowing Sand, Soil, Dirt, Snow	1	0	1	0
Fog, Smog, Smoke	0	0	0	0
Not Reported	15	3	11	1
TOTAL	1,989	19	1,674	296

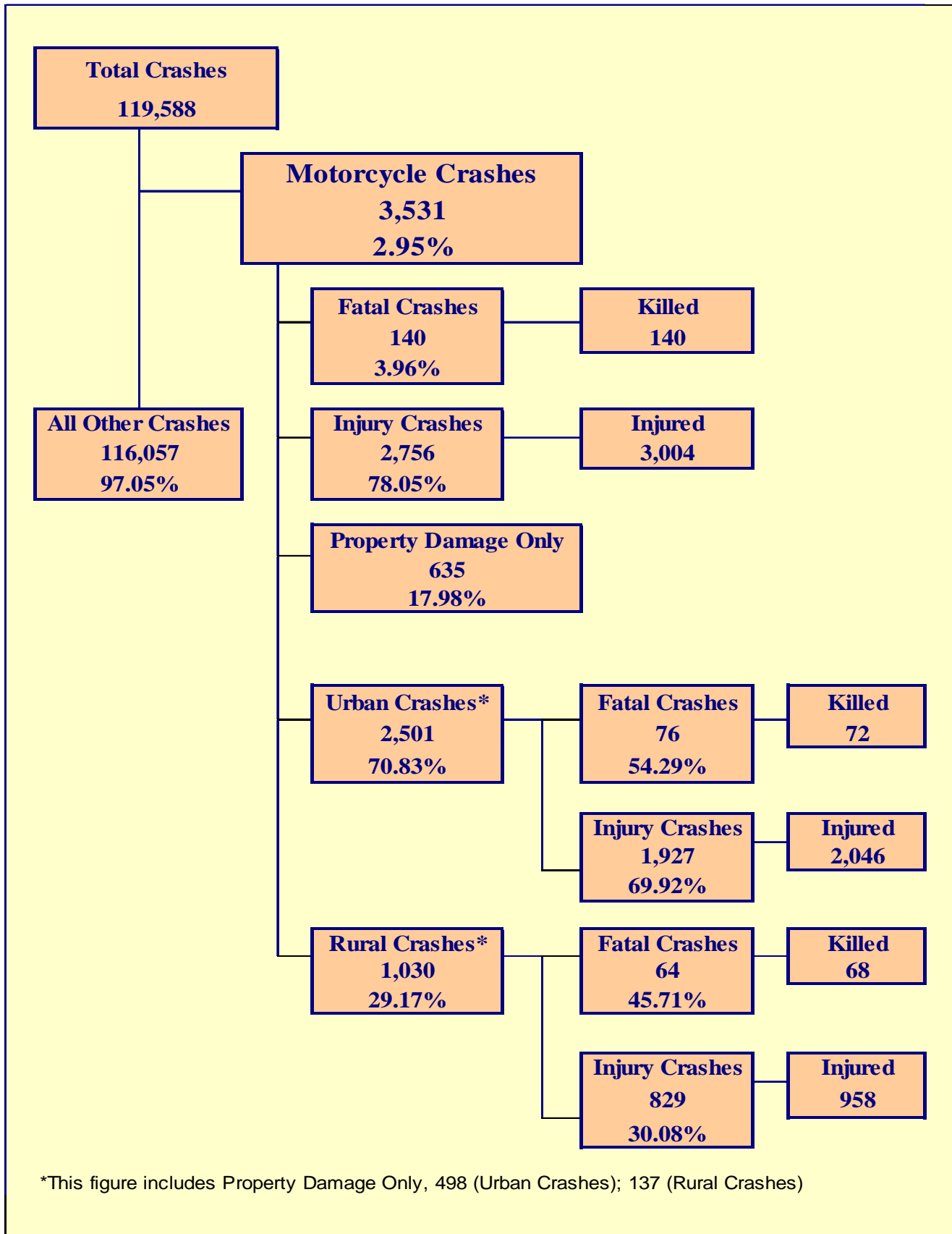


Chart 8 - 1

MC Fatalities by Year

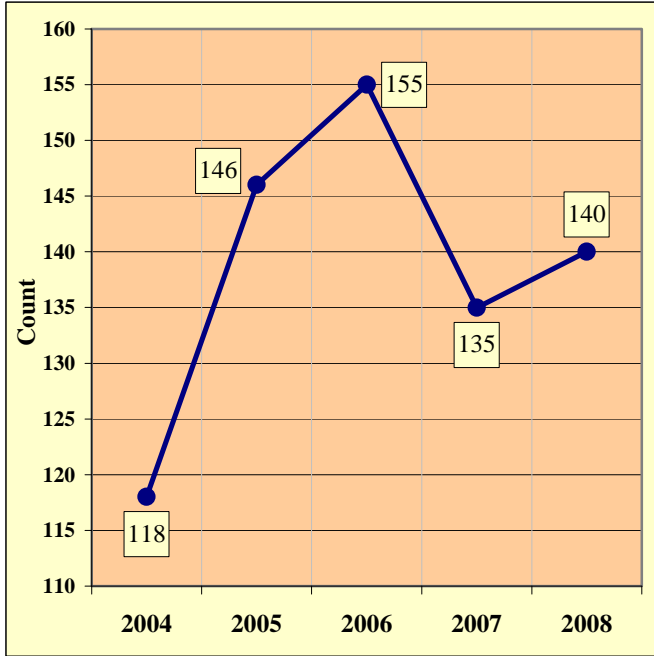
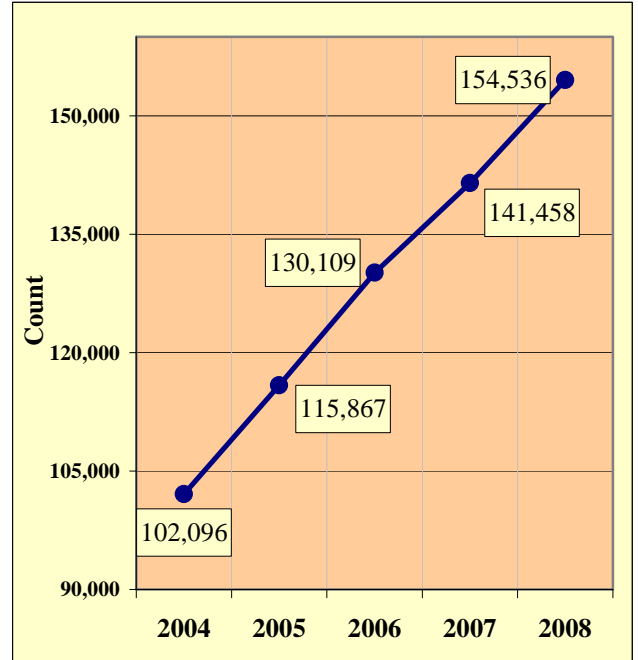


Chart 8 - 2

MC Registrations in Arizona



Total Point-in-Time of Registered Motorcycles at the end of Calendar year 2008.

(Source: MVD - MV988 MV630419 Currently Registered Vehicles by County Listing (motorcycle sub category), reports dated 12/31/08.)

Chart 8 - 3

Fatality Rate per Registered MC

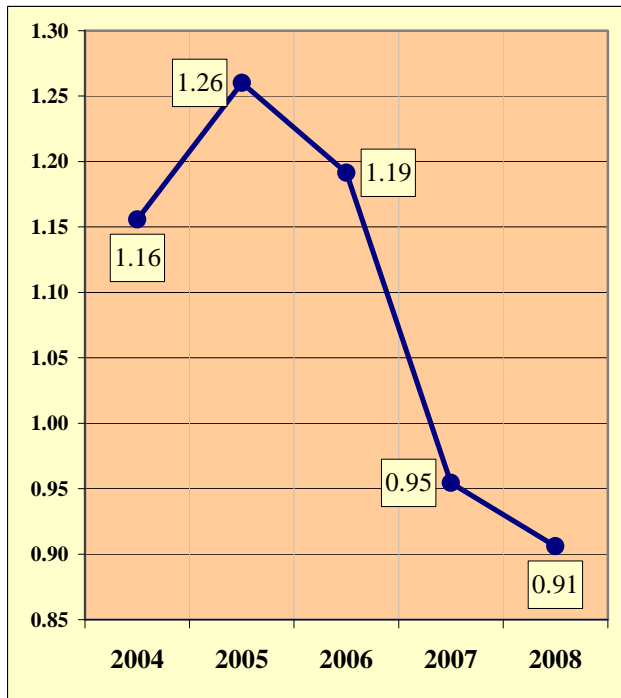
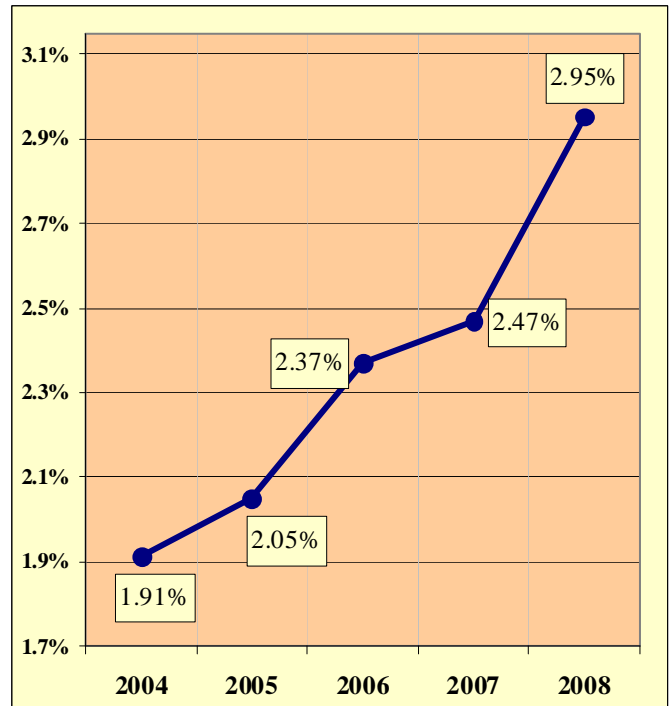


Chart 8 - 4

Percent of MC Crashes to All Crashes



Section 8: – Motorcycle (MC) Crashes

Table 8 - 1

MC Crashes by First Harmful Event

FHE Type	Incident Counts			
	Total	Fatal	Injury	PDO
Overturning	148	12	124	12
Collision with other Motor Vehicle	1,853	76	1,341	436
Collision with Pedestrian	25	4	21	0
Collision with Pedalcyclist	13	0	12	1
Collision with MV on other Rdway	0	0	0	0
Animal	39	0	34	5
Fixed Object	438	38	359	41
Object in Roadway	8	0	6	2
Other*	67	1	34	32
Miscellaneous**	940	9	825	106
TOTAL	3,531	140	2,756	635
*Includes Collision with Parked Vehicles, Trains, Machinery, and Unknown Objects				
**Includes Collision with Special Devices, Objects dropped from vehicles, Non-fixed Objects, as well as Vehicle Fires				

Table 8 - 2

Lighting Conditions in MC Crashes

Type of Lighting Conditions	Incident Counts			
	Total	Fatal	Injury	PDO
Daylight	2,545	82	1,999	464
Dawn or Dusk	164	11	121	32
Darkness	810	46	629	135
Not Reported	12	1	7	4
TOTAL	3,531	140	2,756	635

Table 8 - 3

Road Surface Conditions in MC Crashes

Type of Road Surface Condition	Incident Counts			
	Total	Fatal	Injury	PDO
Dry	3,309	128	2,580	10
Wet	73	1	59	601
Not Reported, No Unusual Condition	56	6	40	13
Sand, Mud, Dirt, Oil or Gravel	71	2	62	7
Snow	0	0	0	0
Slush	1	1	0	0
Ice	3	0	2	1
Other	10	1	8	1
Unknown	8	1	5	2
TOTAL	3,531	140	2,756	635

Table 8 - 4

MC Crashes by Geographic Location

Category	Total	Urban	% of Total	Rural	% of Total
Total Crashes	3,531	2,501	70.83%	1,030	29.17%
Fatal Crashes	140	76	54.29%	64	45.71%
Injury Crashes	2,756	1,927	69.92%	829	30.08%
PDO Crashes	635	498	78.43%	137	21.57%
Persons Killed	140	72	51.43%	68	48.57%
Persons Injured	3,004	2,046	68.11%	958	31.89%

Table 8 - 5

Operator Involvement by Age in MC Crashes

Operator Age Group	Operator Counts							
	Total	Percent of Total	Fatal	Percent of Fatal	Injury	Percent of Injury	PDO	Percent of PDO
15 & Under	46	1.27%	0	0.00%	40	1.41%	6	0.93%
16	20	0.55%	0	0.00%	19	0.67%	1	0.16%
17	23	0.63%	0	0.00%	17	0.60%	6	0.93%
18	79	2.18%	2	1.38%	68	2.39%	9	1.40%
19	118	3.25%	2	1.38%	96	3.38%	20	3.11%
20	113	3.11%	6	4.14%	90	3.17%	17	2.64%
21	132	3.63%	5	3.45%	109	3.83%	18	2.80%
22	113	3.11%	7	4.83%	95	3.34%	11	1.71%
23	98	2.70%	3	2.07%	82	2.88%	13	2.02%
24	107	2.95%	5	3.45%	81	2.85%	21	3.26%
25-34	653	17.98%	19	13.10%	527	18.54%	107	16.61%
35-44	652	17.95%	28	19.31%	504	17.73%	120	18.63%
45-54	712	19.60%	29	20.00%	558	19.63%	125	19.41%
55-64	498	13.71%	28	19.31%	389	13.68%	81	12.58%
65-74	121	3.33%	10	6.90%	94	3.31%	17	2.64%
75 & Older	36	0.99%	1	0.69%	31	1.09%	4	0.62%
Not Stated	111	3.06%	0	0.00%	43	1.51%	68	10.56%
TOTAL	3,632	100.00%	145	100.00%	2,843	100.00%	644	100.00%

Table 8 - 6

MC Operator Physical Condition

Type of Condition	Operator Counts							
	Total	Percent of Total Drivers	Fatal	Percent of Fatal Drivers	Injury	Percent of Injury Drivers	PDO	Percent of PDO Drivers
No Apparent Influence	2,958	81.44%	68	46.90%	2,346	82.52%	544	84.47%
Had Been Drinking	259	7.13%	35	24.14%	210	7.39%	14	2.17%
Appeared to be Under Influence of Drugs*	7	0.19%	3	2.07%	4	0.14%	0	0.00%
Ill-Ability Influenced	2	0.06%	0	0.00%	2	0.07%	0	0.00%
Sleepy-Fatigued	6	0.17%	1	0.69%	5	0.18%	0	0.00%
Physical Impairment	2	0.06%	1	0.69%	1	0.04%	0	0.00%
Prescription Drugs	2	0.06%	0	0.00%	2	0.07%	0	0.00%
Other	43	1.18%	0	0.00%	32	1.13%	11	1.71%
Unknown	315	8.67%	37	25.52%	212	7.46%	66	10.25%
Not Reported	38	1.05%	0	0.00%	29	1.02%	9	1.40%
TOTAL	3,632	100.00%	145	100.00%	2,843	100.00%	644	100.00%

*Illegal drugs or narcotics

Table 8 - 7

MC Operators Involved in Fatal Crashes by License Status

License Status	2006		2007		2008	
	Operator Counts	Percent of Total	Operator Counts	Percent of Total	Operator Counts	Percent of Total
No license	4	2.78%	6	4.29%	3	2.11%
Invalid	35	24.31%	37	26.43%	21	14.79%
Valid	101	70.14%	96	68.57%	117	82.39%
Unknown	4	2.78%	1	0.71%	1	0.70%
TOTALS	144	100.00%	140	100.00%	142	100.00%
Note: Includes only motorcycle operators involved in fatal crashes.						
Source: FARS Data Queries						

Table 8 - 8

MC Operator’s Helmet Use

Severity of Injury	Helmet Used	Percent of Total	Helmet Not Used	Percent of Total	Unknown	Percent of Total	Total	Percent of Total
No Injury	250	16.80%	241	17.23%	183	24.56%	674	18.56%
Unknown Injury	12	0.81%	12	0.86%	63	8.46%	87	2.40%
Possible Injury	218	14.65%	219	15.65%	136	18.26%	573	15.78%
Non-Incapacitating Injury	626	42.07%	539	38.53%	224	30.07%	1,389	38.24%
Incapacitating Injury	320	21.51%	329	23.52%	128	17.18%	777	21.39%
Fatal Injury	62	4.17%	59	4.22%	11	1.48%	132	3.63%
TOTALS	1,488	100.00%	1,399	100.00%	745	100.00%	3,632	100.00%

Table 8 - 9

MC Passenger’s Helmet Use

Severity of Injury	Helmet Used	Percent of Total	Helmet Not Used	Percent of Total	Unknown	Percent of Total	Total	Percent of Total
No Injury	12	11.21%	26	15.57%	23	35.94%	61	18.05%
Unknown Injury	1	0.93%	0	0.00%	3	4.69%	4	1.18%
Possible Injury	21	19.63%	25	14.97%	12	18.75%	58	17.16%
Non-Incapacitating Injury	49	45.79%	59	35.33%	18	28.13%	126	37.28%
Incapacitating Injury	19	17.76%	54	32.34%	8	12.50%	81	23.96%
Fatal Injury	5	4.67%	3	1.80%	0	0.00%	8	2.37%
TOTALS	107	100.00%	167	100.00%	64	100.00%	338	100.00%

Table 8 - 10

MC Operators and Passengers Killed and Injured

Age of Victim	Persons Killed			Persons Injured			
	Total	Male	Female	Total	Male	Female	Gender Unknown
0-4	0	0	0	2	0	2	0
5-9	0	0	0	14	9	5	0
10-14	0	0	0	34	24	10	0
15-19	3	3	0	241	199	42	0
20-24	26	25	1	475	434	41	0
25-34	20	19	1	545	477	68	0
35-44	27	24	3	530	442	88	0
45-54	27	20	7	594	476	118	0
55-64	27	26	1	400	335	65	0
65-74	9	9	0	99	89	10	0
75 & Older	1	1	0	31	26	5	0
Not Stated	0	0	0	39	30	8	1
TOTAL	140	127	13	3,004	2,541	462	1

Table 8 - 11

MC Operator Errors

Type of Violation or Behavior	Operator Counts							
	Total	Percent of Total Operators	Fatal	Percent of Fatal Operators	Injury	Percent of Injury Operators	PDO	Percent of PDO Operators
No Improper Driving	1,517	41.77%	38	26.21%	1,181	41.54%	298	46.27%
Speeding*	1,000	27.53%	48	33.10%	822	28.91%	130	20.19%
Exceeded Lawful Speed	69	1.90%	12	8.28%	52	1.83%	5	0.78%
Failed to Yield Right-Of-Way	97	2.67%	2	1.38%	70	2.46%	25	3.88%
Followed Too Closely	61	1.68%	0	0.00%	42	1.48%	19	2.95%
Ran Stop Sign	11	0.30%	0	0.00%	7	0.25%	4	0.62%
Disregarded Traffic Signal	19	0.52%	1	0.69%	14	0.49%	4	0.62%
Made Improper Turn	26	0.72%	0	0.00%	19	0.67%	7	1.09%
Drove in Opposing Lane	18	0.50%	3	2.07%	14	0.49%	1	0.16%
Operated with Faulty Equipment	12	0.33%	0	0.00%	11	0.39%	1	0.16%
Required Motorcycle Safety Equipment Not Used	14	0.39%	1	0.69%	12	0.42%	1	0.16%
Passed in No-Passing Zone	4	0.11%	0	0.00%	4	0.14%	0	0.00%
Unsafe Lane Change	46	1.27%	2	1.38%	30	1.06%	14	2.17%
Other Unsafe Passing	33	0.91%	1	0.69%	26	0.91%	6	0.93%
Inattention	223	6.14%	6	4.14%	179	6.30%	38	5.90%
Other	211	5.81%	7	4.83%	167	5.87%	37	5.75%
Unknown	271	7.46%	24	16.55%	193	6.79%	54	8.39%
TOTAL	3,632	100.00%	145	100.00%	2,843	100.00%	644	100.00%

*Driving too fast for conditions

Section 8: – Motorcycle (MC) Crashes

Chart 8 - 5

All MC Crashes vs. Fatal MC Crashes by Time of Day - Weekdays

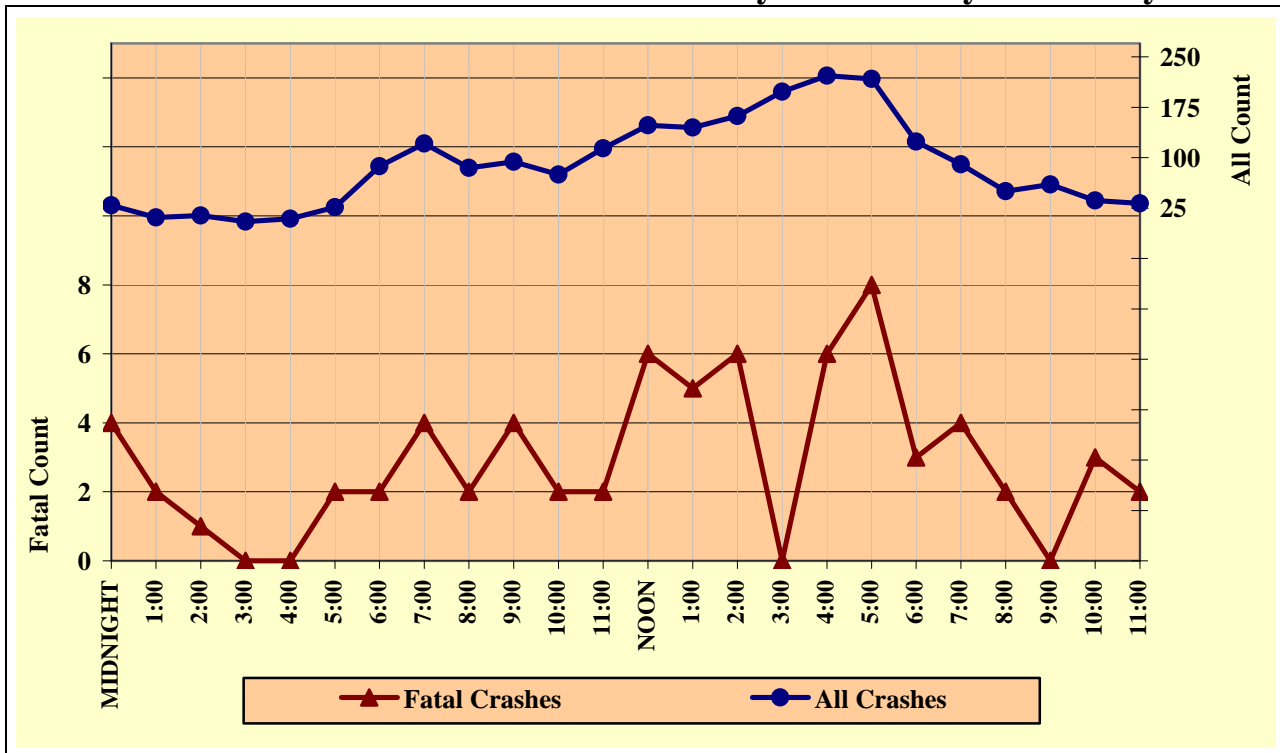


Chart 8 - 6

All MC Crashes vs. Fatal MC Crashes by Time of Day - Weekends

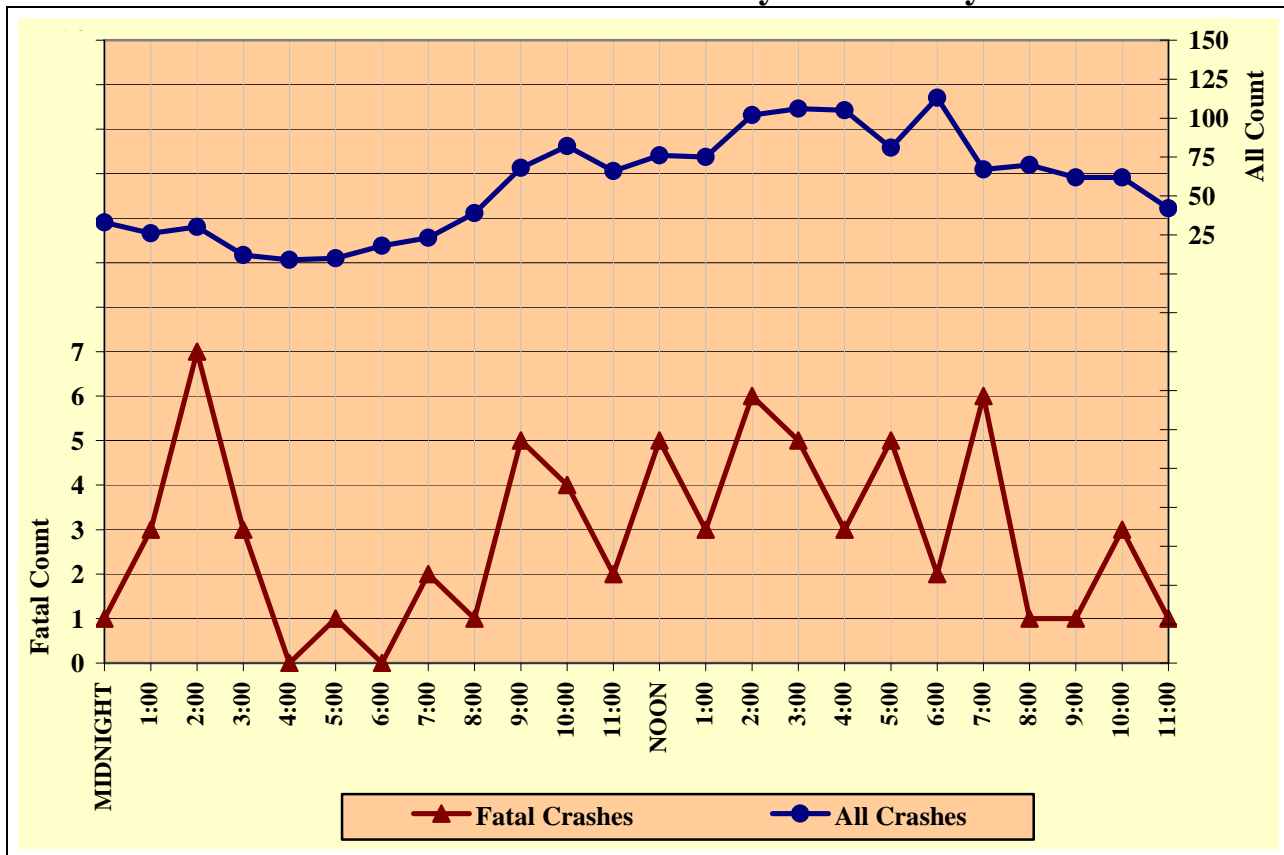


Chart 8 - 7

All MC Crashes vs. Fatal MC Crashes by Day of Week

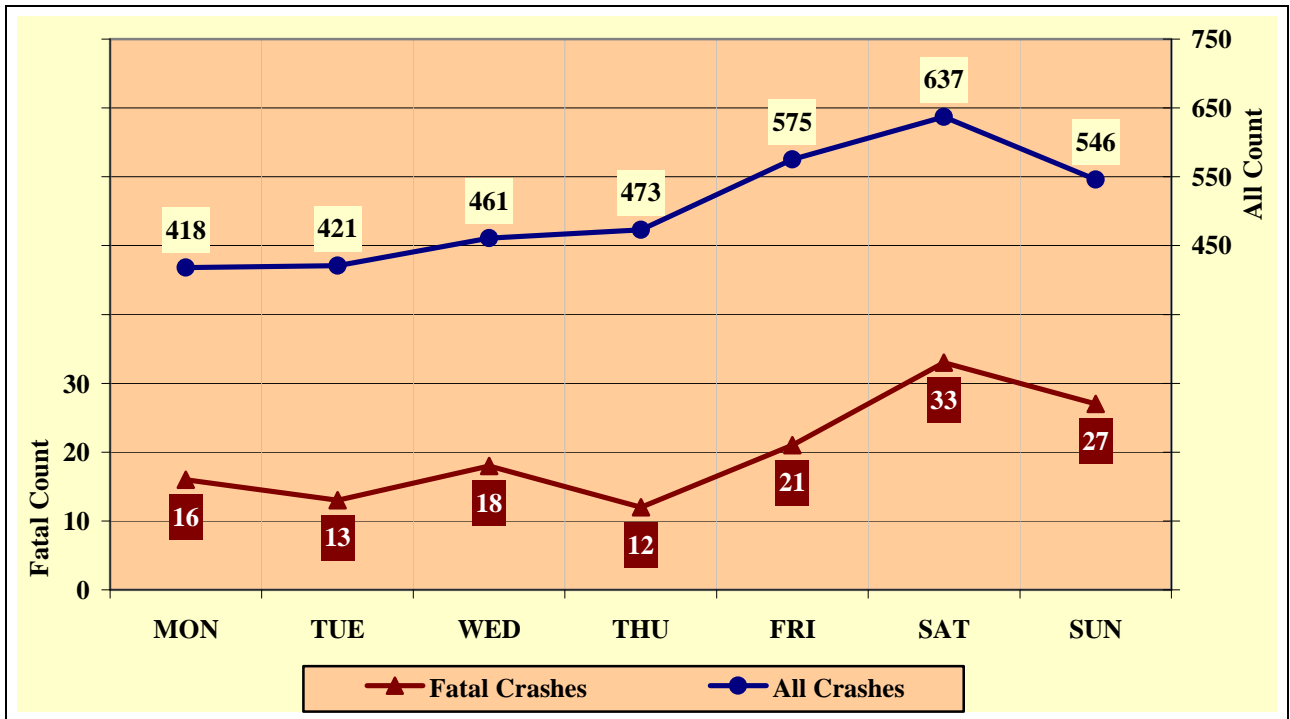
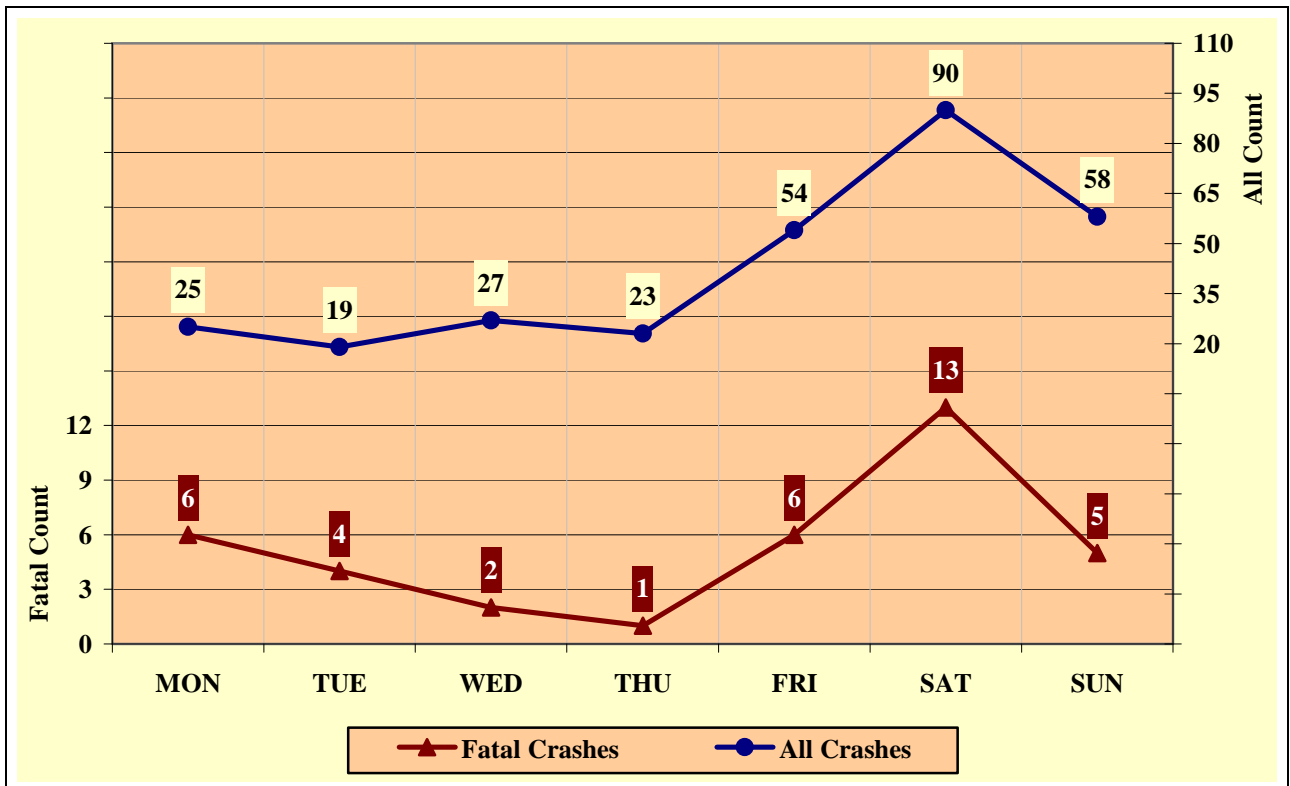


Chart 8 - 8

Alcohol Related MC Crashes vs. Fatal Alcohol Related MC Crashes by Day of Week



Section 8: – Motorcycle (MC) Crashes

Table 8 - 12

MC Crashes by Hour and Day of Week

Hour Beginning	Total Crashes		Monday		Tuesday		Wednesday		Thursday		Friday		Saturday		Sunday		Weekdays		Weekends	
	All	Fatal	All	Fatal	All	Fatal	All	Fatal	All	Fatal	All	Fatal	All	Fatal	All	Fatal	All	Fatal	All	Fatal
MIDNIGHT	62	5	4	0	5	0	9	2	9	1	6	1	16	1	13	0	29	4	33	1
1:00	37	5	2	0	2	1	4	0	2	0	3	1	11	3	13	0	11	2	26	3
2:00	44	8	3	2	2	1	2	0	4	0	6	0	8	2	19	3	14	1	30	7
3:00	17	3	3	2	0	0	0	0	0	0	5	0	3	0	6	1	5	0	12	3
4:00	18	0	5	0	1	0	3	0	1	0	4	0	1	0	3	0	9	0	9	0
5:00	36	3	5	0	9	1	3	0	9	1	5	0	3	0	2	1	26	2	10	1
6:00	105	2	19	0	20	1	21	0	15	1	12	0	10	0	8	0	87	2	18	0
7:00	144	6	16	0	23	0	33	2	30	1	19	1	11	2	12	0	121	4	23	2
8:00	124	3	24	1	13	0	18	1	14	0	16	0	20	0	19	1	85	2	39	1
9:00	162	9	15	0	23	0	16	1	17	2	23	1	36	2	32	3	94	4	68	5
10:00	157	6	18	2	8	0	10	0	16	0	23	0	41	2	41	2	75	2	82	4
11:00	180	4	17	1	14	0	23	1	40	0	20	0	34	1	32	1	114	2	66	2
NOON	224	11	26	1	28	0	26	2	22	1	46	2	41	2	35	3	148	6	76	5
1:00	220	8	25	1	26	1	22	1	30	0	42	2	38	1	37	2	145	5	75	3
2:00	264	12	31	1	32	1	33	1	22	1	44	2	53	3	49	3	162	6	102	6
3:00	304	5	52	0	42	0	31	0	30	0	43	0	66	4	40	1	198	0	106	5
4:00	327	9	38	0	50	1	46	1	48	0	40	4	42	1	63	2	222	6	105	3
5:00	298	13	39	0	35	3	44	4	53	0	46	1	51	4	30	1	217	8	81	5
6:00	237	5	24	1	31	2	33	0	36	0	43	2	39	0	31	0	124	3	113	2
7:00	157	10	17	0	18	0	31	1	24	3	24	2	23	2	20	2	90	4	67	6
8:00	120	3	13	2	12	0	16	0	9	0	32	0	26	1	12	0	50	2	70	1
9:00	122	1	10	0	15	0	17	0	18	0	27	0	24	1	11	0	60	0	62	1
10:00	98	6	7	1	6	1	11	1	12	0	29	2	18	0	15	1	36	3	62	3
11:00	74	3	5	1	6	0	9	0	12	1	17	0	22	1	3	0	32	2	42	1
TOTAL	3,531	140	418	16	421	13	461	18	473	12	575	21	637	33	546	27	2,154	70	1,377	70

Crashes during Weekends accounted for 39.00% of all MC crashes and 50.00% of Fatal MC Crashes.

Crashes during Weekdays accounted for 61.00% of all MC crashes and 50.00% of Fatal MC Crashes.

Acknowledgements

Special gratitude to our other providers of data and information including:

The National Center for Statistics and Analysis, Research and Development

National Highway Transportation Safety Administration

The Arizona State Data Center, Arizona Department of Economic Security

*The Office of Planning, Evaluation, and Public Health Statistics, Arizona
Department of Health Services*

The Information Technology Group, Arizona Department of Transportation

The National Safety Council