

ARIZONA

MOTOR VEHICLE CRASH FACTS

2012



2012 Motor Vehicle Crash Facts for the State of Arizona

Prepared by:
The Arizona Department of Transportation
Intermodal Transportation Division

Publication Date: October 28, 2013



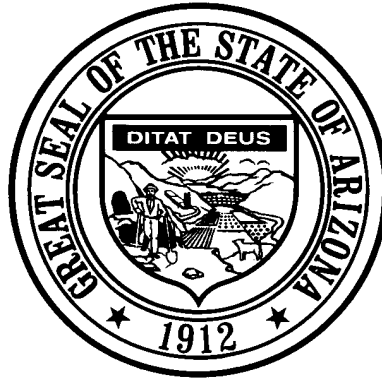
This publication is an annual statistical review of the motor vehicle crashes in the State of Arizona for the calendar year 2012. The results are compiled from Arizona Traffic Accident Reports submitted to the Arizona Department of Transportation by state, county, city, tribal, and other law enforcement agencies. Specific inquiries regarding the data in this report should be directed to:

The Arizona Department of Transportation
Intermodal Transportation Division
Traffic Records Section
206 S. 17th Ave. MD 064R
Phoenix, AZ 85007-3213

E-mail: azcrashfacts@azdot.gov

In order to provide the most current information, preliminary data is utilized when necessary. For this reason, previous or future reports may differ slightly and we encourage you to refer to the latest issue of Motor Vehicle Crash Facts.

This issue as well as previous issues of this publication may be viewed and downloaded from ADOT's Web Site at:
<http://www.azdot.gov/mvd/Statistics/arizona-motor-vehicle-crash-facts>



Janice K. Brewer
Governor

Arizona Department of Transportation

John S. Halikowski
Director

State Transportation Board

Victor Flores – District 1
Chairman

Stephen W. Christy – District 2
Vice Chairman

Members

Joseph E. La Rue – District 1
William R. Cuthbertson – District 3
Kelly O. Anderson – District 4
Hank Rogers – District 5
Deanna L. Beaver – District 6

OVERVIEW

Section 1: – Highlights and Historical Trends 1

Section 2: – Geographic Location..... 9

Section 3: – Crash Descriptions 17

Section 4: – Safety Devices 23

Section 5: – Motor Vehicle and Driver Descriptions 26

Section 6: – Alcohol Related Crashes..... 32

Section 7: – Pedestrian and Pedalcyclist Crashes 41

Section 8: – Motorcycle (MC) Crashes 46

Acknowledgements 55

2012 Arizona Crash Facts Summary

Table of Contents

Section 1: Highlights and Historical Trends	1
Arizona Crash Facts Summary and Comparison.....	2
Arizona at a Glance – 2012.....	2
Licensed Drivers, Motor Vehicle Registration and Crash History in Arizona.....	3
Historical Trends – Arizona and the United States	3
Statewide Economic Loss Due to Motor Vehicle Crashes.....	4
Average Economic Cost per Incident.....	4
Traffic Crashes in Arizona by Year.....	5
Victims of Motor Vehicle Crashes.....	6
Arizona’s 2012 Estimated Population.....	6
Victims of Motor Vehicle Crashes (Arizona Residents Only).....	6
Vehicle Miles Traveled.....	7
Arizona vs. U.S. Fatality Rate.....	7
Traffic Fatalities by Geographic Region.....	7
Traffic Injuries by Geographic Region.....	7
Holiday Crash Statistics.....	8
Section 2: Geographic Location	9
Crash Severity by First Harmful Event Statewide.....	10
Crashes by County.....	10
Crash Severity by First Harmful Event in Urban Areas.....	11
Crash Severity by First Harmful Event in Rural Areas.....	11
Analysis by Jurisdiction.....	12
Total Fatalities by County for 2011 and 2012.....	15
Urban and Rural Crashes by Day of Week.....	16
Urban and Rural Fatal Crashes by Day of Week.....	16
All Urban and Rural Crashes vs. Urban and Rural Fatal Crashes by Month.....	16
Section 3: Crash Descriptions	17
Manner of Collision in Multi-Vehicle Crashes.....	18
Lighting Conditions.....	18
Weather Conditions.....	18
Road Surface Conditions.....	19
Roadway Grade.....	19
Roadway Alignment.....	19
All Crashes vs. Fatal Crashes by Time of Day - Weekdays.....	20
All Crashes vs. Fatal Crashes by Time of Day - Weekends.....	20
Crashes by Day of Week.....	21
Fatal Crashes by Day of Week.....	21
All Crashes vs. Fatal Crashes by Month.....	21
Crashes by Hour and Day of Week.....	22
Section 4: Safety Devices	23
Child Safety Device Usage (less than five years old).....	24
Driver Safety Device Usage.....	24
Passenger Safety Device Usage.....	24
Driver Safety Device Usage by Gender.....	25
Driver Safety Device Usage by Age.....	25
Section 5: Motor Vehicle and Driver Descriptions	26
Arizona Motor Vehicle Registrations.....	27
Motor Vehicle Crash Involvement by Vehicle Type.....	27
Hit and Run Drivers Involved in Crashes.....	28
Gender of Drivers Involved in Crashes.....	28

2012 Arizona Crash Facts Summary

License Status of Drivers Involved in Crashes.....	28
Passengers Killed and Injured by Age and Gender.....	28
Drivers and Passengers Killed and Injured by Vehicle Type.....	29
Drivers Killed and Injured by Age and Gender.....	29
Licensed Drivers in Arizona by Age.....	30
Driver Involvement by Age.....	30
Driver Violations.....	31
Driver Physical Condition.....	31
Section 6: Alcohol Related Crashes.....	32
Economic Loss Due to Alcohol Related Crashes in Arizona for 2012.....	33
Alcohol Related Crash History.....	33
Manner of Collision in Alcohol Related Crashes.....	33
Alcohol Related Crashes by First Harmful Event.....	34
Alcohol Related Crashes by Vehicle Type.....	34
Lighting Conditions in Alcohol Related Crashes.....	35
Road Surface Conditions in Alcohol Related Crashes.....	35
Gender of Drivers Involved in Alcohol Related Crashes.....	35
Driver Involvement by Age in Alcohol Related Crashes.....	36
When Alcohol Related Crashes Occurred in 2012.....	36
Safety Device Usage for Drinking Drivers.....	36
Persons Killed and Injured in Alcohol Related Crashes.....	37
Alcohol Related Crashes by County.....	37
All Alcohol Related Crashes vs. Fatal Alcohol Related Crashes by Day of Week.....	38
All Alcohol Related Crashes vs. Fatal Alcohol Related Crashes by Month.....	38
All Alcohol Related Crashes vs. Fatal Alcohol Related Crashes - Weekdays.....	39
All Alcohol Related Crashes vs. Fatal Alcohol Related Crashes - Weekends.....	39
Alcohol Related Crashes by Hour and Day of Week.....	40
Section 7: Pedestrian and Pedalcyclist Crashes.....	41
Pedestrians Killed and Injured By Age and Gender.....	42
Pedestrian Crashes by Geographic Location.....	42
Pedestrian Crash History.....	42
Pedestrians Killed by Age and Action.....	43
Pedestrians Injured by Age and Action.....	43
Pedestrian Physical Condition in Motor Vehicle Crashes.....	43
Lighting Conditions in Pedestrian Crashes.....	44
Weather Conditions in Pedestrian Crashes.....	44
Pedalcyclists Killed and Injured by Age and Gender.....	44
Pedalcycle Crashes by Geographic Location.....	45
Pedalcycle Crash History.....	45
Lighting Conditions in Pedalcyclist Crashes.....	45
Weather Conditions in Pedalcyclist Crashes.....	45
Section 8: Motorcycle (MC) Crashes.....	46
MC Fatalities by Year.....	47
MC Registrations in Arizona.....	47
Fatality Rate per Registered MC.....	47
Percent of MC Crashes to All Crashes.....	47
MC Crashes by First Harmful Event.....	48
Lighting Conditions in MC Crashes.....	48
Road Surface Conditions in MC Crashes.....	48
MC Crashes by Geographic Location.....	49
Operator Involvement by Age in MC Crashes.....	49
MC Operator Physical Condition.....	49
MC Operators Involved in Fatal Crashes by License Status.....	50
MC Operator's Helmet Use.....	50

2012 Arizona Crash Facts Summary

MC Passenger's Helmet Use.....	50
MC Operators and Passengers Killed and Injured.....	51
MC Operator Errors.....	51
All MC Crashes vs. Fatal MC Crashes by Time of Day - Weekdays.....	52
All MC Crashes vs. Fatal MC Crashes by Time of Day - Weekends.....	52
All MC Crashes vs. Fatal MC Crashes by Day of Week.....	53
Alcohol Related MC Crashes vs. Fatal Alcohol Related MC Crashes by Day of Week.....	53
MC Crashes by Hour and Day of Week.....	54
Acknowledgements.....	55

2012 Arizona Crash Facts Summary

BREAKDOWN OF ALL CRASHES IN ARIZONA

TOTAL	103,637
FATAL	738
INJURY	33,475
PROPERTY DAMAGE ONLY	69,424
URBAN	83,543
RURAL	20,094
ALCOHOL RELATED	5,444
PEDESTRIAN	1,575
PEDALCYCLE	2,134
MOTORCYCLE	3,180
SINGLE VEHICLE	18,712
MULTI-VEHICLE	84,925

BREAKDOWN OF FATAL CRASHES IN ARIZONA

TOTAL	738
ALCOHOL RELATED	251
URBAN	376
RURAL	362
SINGLE VEHICLE	314
MULTI-VEHICLE	424
ALCOHOL RELATED SINGLE VEHICLE	118
ALCOHOL RELATED MULTI-VEHICLE	133

BREAKDOWN OF PERSONS KILLED AND INJURED

TYPE	KILLED	INJURED
IN ALL CRASHES	821	49,896
IN ALCOHOL RELATED CRASHES	281	3,744
IN URBAN CRASHES	394	40,252
IN RURAL CRASHES	427	9,644
USING SAFETY DEVICE	241	39,312
NOT USING SAFETY DEVICE	317	3,622
DRIVERS AGE 24 OR YOUNGER	100	7,686
DRINKING DRIVERS AGE 24 OR YOUNGER	37	505

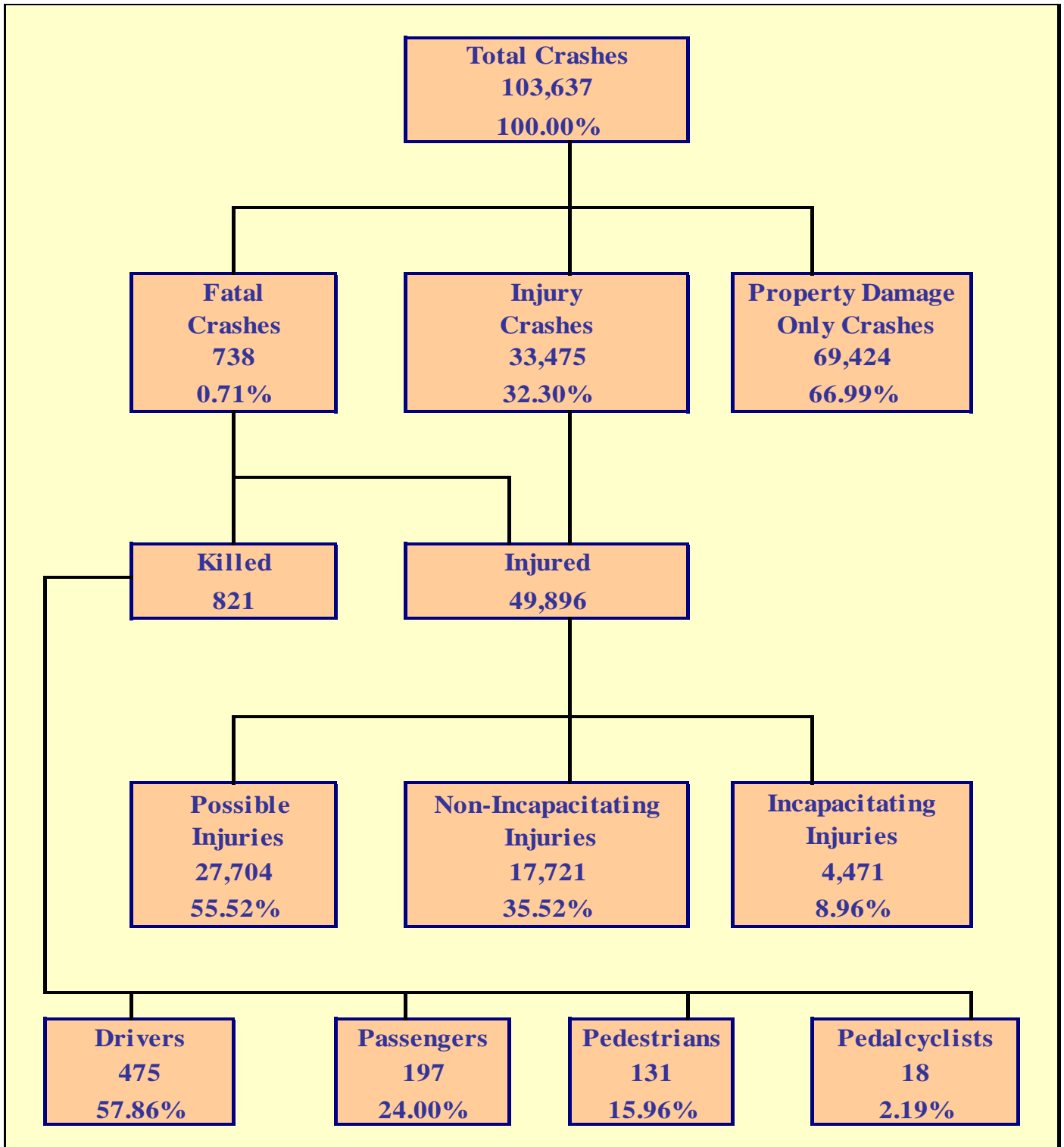
BREAKDOWN OF CRASHES BY TIME

PEAK MONTH FOR ALL CRASHES	MARCH
PEAK DAY FOR ALL CRASHES	FRIDAY
PEAK HOUR FOR ALL CRASHES	5 PM - 6 PM
PEAK MONTH FOR FATAL CRASHES	MARCH
PEAK DAY FOR FATAL CRASHES	SATURDAY
PEAK DATE FOR ALL CRASHES IN 2012	DECEMBER 14TH (515 CRASHES)
PEAK DATE FOR FATAL CRASHES IN 2012	MARCH 31ST (8 CRASHES)
PEAK HOUR FOR ALCOHOL RELATED CRASHES	2 AM - 3 AM
PEAK DAY FOR MOTORCYCLE CRASHES	SATURDAY
PEAK HOUR FOR FATAL MOTORCYCLE CRASHES	6 PM - 7 PM

OTHER FACTS

MOST COMMON MANNER OF COLLISION	REAR END
MOST COMMON DRIVER VIOLATION	SPEED TOO FAST FOR CONDITIONS

THIS PAGE LEFT BLANK FOR PRINTING PURPOSES



Section 1: – Highlights and Historical Trends

Table 1 – 1

Arizona Crash Facts Summary and Comparison

Category	2011	2012	Percent Change
Total Crashes	103,780	103,637	-0.14%
Total Fatalities	827	821	-0.73%
Total Injuries	49,718	49,896	0.36%
Alcohol Related Fatalities	287	281	-2.09%
Alcohol Related Injuries	3,683	3,744	1.66%
Urban Fatalities	389	394	1.29%
Urban Injuries	40,021	40,252	0.58%
Rural Fatalities	438	427	-2.51%
Rural Injuries	9,697	9,644	-0.55%
MC Operator and Passenger Fatalities	132	139	5.30%
MC Operator and Passenger Injuries	2,562	2,728	6.48%
Pedestrians Fatalities	154	131	-14.94%
Pedestrians Injuries	1,257	1,354	7.72%
Pedalcyclist Fatalities	23	18	-21.74%
Pedalcyclist Injuries	1,614	1,755	8.74%
Millions of vehicle miles traveled (VMT)	59,575	60,129	0.93%
Fatalities per 100 million VMT	1.39	1.37	-1.64%
Injuries per 100 million VMT	83.45	82.98	-0.57%

Arizona at a Glance – 2012

- Approximately **2.25** persons were killed each day.
- One person was killed every **10.68** hours.
- There were **136.61** persons injured every day.
- One person was injured every **10.54** minutes.
- Alcohol Related crashes accounted for **5.25%** of all crashes and **34.01%** of all fatal crashes.
- Of all alcohol related crashes, **78.49%** occurred in Urban areas and **21.51%** occurred in Rural areas, while **52.99%** of all alcohol related fatal crashes occurred in Urban areas and **47.01%** occurred in Rural areas.
- Single vehicle crashes accounted for **18.06%** of all crashes and **42.55%** of all fatal crashes.
- Of all Pedestrian crashes, **8.25%** were fatal while **0.84%** of Pedalcycle crashes were fatal.
- Crashes which occurred during daylight hours (6:00 a.m. to 6:00 p.m.) accounted for **72.5%** of all crashes.
- Motor vehicle crashes resulted in **\$2.927** billion in economic losses to Arizona.
- Children age 14 and younger accounted for **44** fatalities and **3,631** injuries in motor vehicle crashes.

Section 1: – Highlights and Historical Trends

The Nation In 2012

The population of the United States was estimated at **316,668,567** (source: www.census.gov).

Estimated vehicle miles traveled totaled **2.954 billion** miles.

An estimated **33,561** persons were killed in motor vehicle crashes in the United States.

Source for this data: www.nhtsa.gov.

**Table 1 – 2
Licensed Drivers, Motor Vehicle Registration
and Crash History in Arizona**

Calendar Year	Total Crashes	Fatal Crashes	Injury Crashes	Property Damage Only Crashes	Total Persons Killed	Total Persons Injured	Total Licensed Drivers	Total Registered Vehicles
2008	120,557	843	37,515	82,199	938	56,539	4,360,711	4,842,188
2009	107,126	709	33,493	72,924	806	50,786	4,434,719	4,787,350
2010	106,830	695	33,391	72,744	759	50,421	4,537,653	4,805,904
2011	103,780	756	33,143	69,881	827	49,718	4,634,405	4,855,014
2012	103,637	738	33,475	69,424	821	49,896	4,736,517	4,969,620

**Table 1 – 3
Historical Trends – Arizona and the United States**

Calendar Year	U.S. Fatality Rate*	Arizona Fatality Rate	Arizona Traffic Fatalities	Estimated Motor Vehicle Miles Traveled	Arizona Fatal Crash Rate
2008	1.26	1.52	938	61,628	1.37
2009	1.15	1.34	806	59,978	1.18
2010	1.11	1.27	759	59,906	1.16
2011	1.10	1.39	827	59,575	1.27
2012	1.14	1.37	821	60,129	1.23

Vehicle miles traveled are shown in million miles and rates per 100 million miles

*Source for U.S. Fatality Rate: www.nhtsa.gov

Section 1: – Highlights and Historical Trends

Statewide Economic Loss Due to Motor Vehicle Crashes

Fatalities	\$1,189,136,400
Incapacitating Injuries	\$321,509,610
Non-Incapacitating Injuries	\$410,312,034
Possible Injuries	\$361,703,424
Property Damage Only	\$644,393,568
TOTAL	\$2,927,055,036

Table 1 – 4

Estimated Economic Loss by County

County	Cost of Traffic Crashes			
	Fatalities	Injuries	PDO	Total
Apache	\$ 68,074,800	\$ 8,545,458	\$ 2,413,320	\$ 79,033,578
Cochise	\$ 31,864,800	\$ 14,498,586	\$ 10,562,916	\$ 56,926,302
Coconino	\$ 82,558,800	\$ 29,946,282	\$ 24,810,786	\$ 137,315,868
Gila	\$ 26,071,200	\$ 10,313,322	\$ 4,910,178	\$ 41,294,700
Graham	\$ 4,345,200	\$ 2,767,770	\$ 1,809,990	\$ 8,922,960
Greenlee	\$ 8,690,400	\$ 1,132,710	\$ 612,612	\$ 10,435,722
La Paz	\$ 26,071,200	\$ 6,331,140	\$ 2,060,604	\$ 34,462,944
Maricopa	\$ 486,662,400	\$ 717,082,644	\$ 453,472,110	\$ 1,657,217,154
Mohave	\$ 65,178,000	\$ 38,299,776	\$ 18,164,874	\$ 121,642,650
Navajo	\$ 47,797,200	\$ 13,719,204	\$ 6,367,452	\$ 67,883,856
Pima	\$ 152,082,000	\$ 145,647,330	\$ 56,601,636	\$ 354,330,966
Pinal	\$ 85,455,600	\$ 42,376,716	\$ 23,000,796	\$ 150,833,112
Santa Cruz	\$ 13,035,600	\$ 4,337,754	\$ 3,814,902	\$ 21,188,256
Yavapai	\$ 56,487,600	\$ 32,826,354	\$ 19,362,252	\$ 108,676,206
Yuma	\$ 34,761,600	\$ 25,700,022	\$ 16,429,140	\$ 76,890,762
TOTALS	\$ 1,189,136,400	\$ 1,093,525,068	\$ 644,393,568	\$ 2,927,055,036

NOTE: Cost estimates are based on a 2% increase of the 2011 National Safety Council estimates of the average cost of motor vehicle crashes, deaths, and injuries. These costs are an estimate of wage and productivity losses, medical expenses, administrative expenses, motor vehicle damage, and employer costs. A description of the National Safety Council's current cost estimating procedures may be found in the Technical Appendix of *Injury Facts*® (source: www.nsc.org/news_resources/injury_and_death_statistics).

Table 1 – 5

Average Economic Cost per Incident

1.	Fatality	\$1,448,400
2.	Incapacitating Injury	\$71,910
3.	Non-Incapacitating Injury	\$23,154
4.	Possible Injury	\$13,056
5.	Property Damage Only	\$9,282

Section 1: – Highlights and Historical Trends

Traffic Crashes in Arizona by Year

Chart 1 – 1
Total Crashes

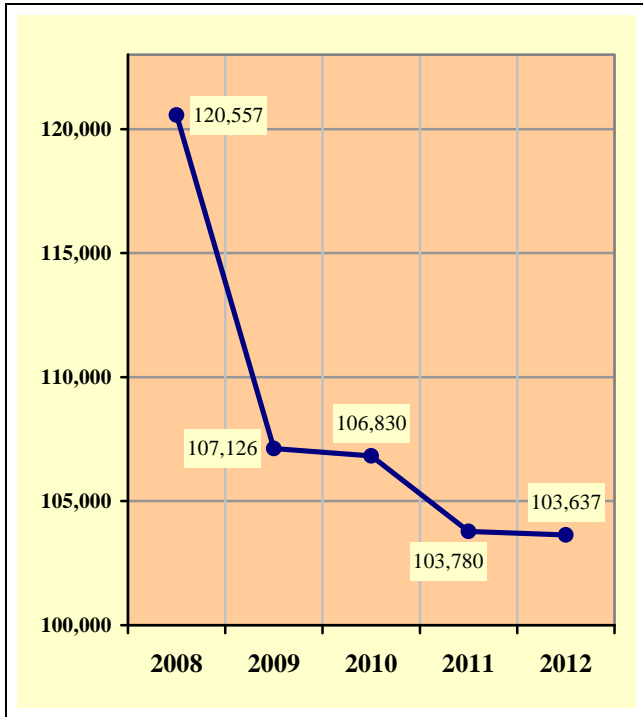


Chart 1 – 2
Fatal Crashes

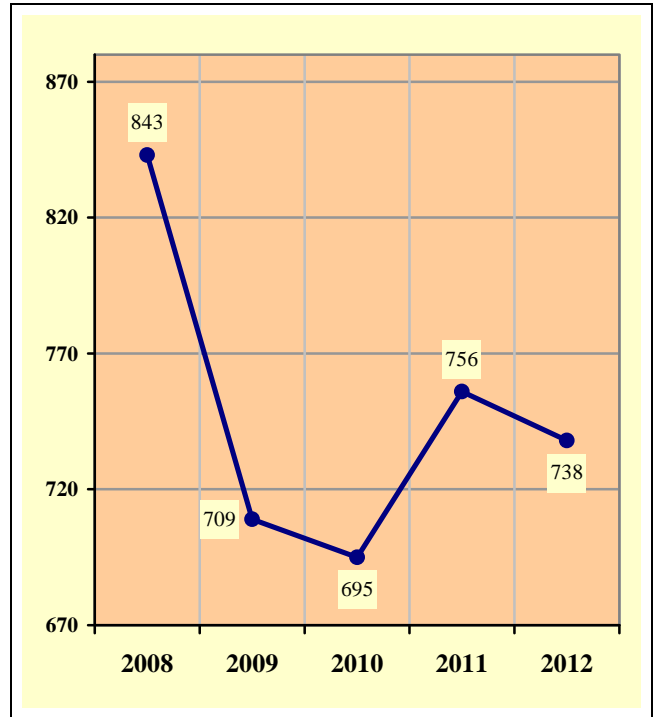


Chart 1 – 3
Injury Crashes

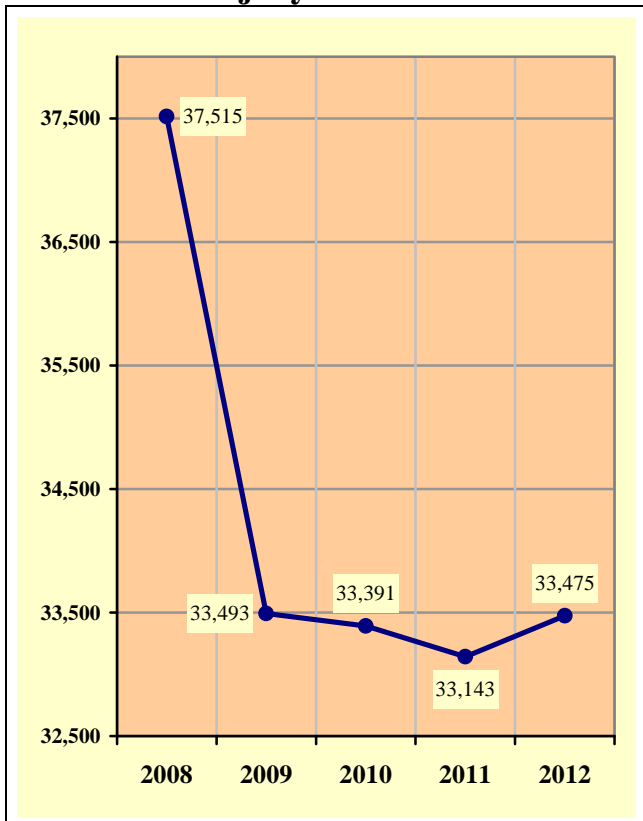
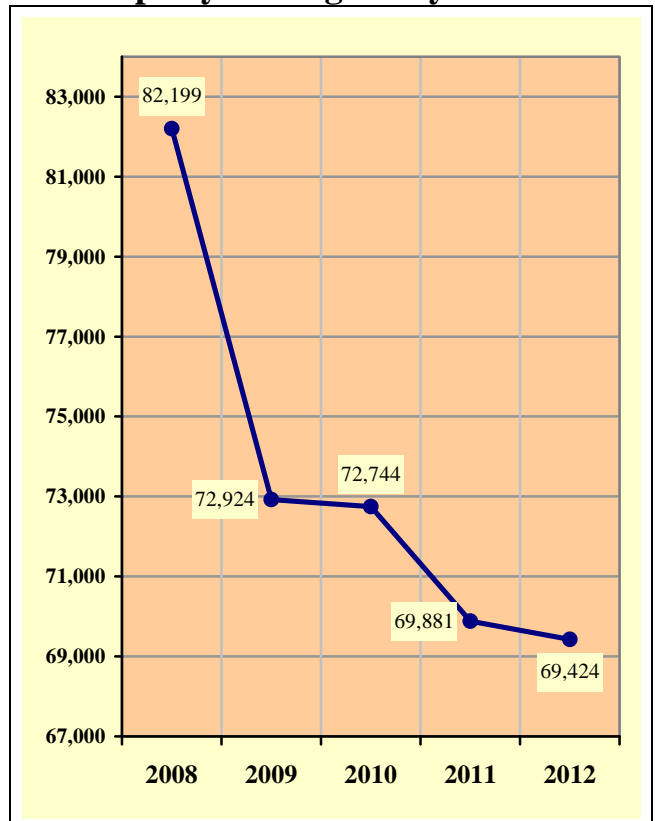


Chart 1 – 4
Property Damage Only Crashes



Section 1: – Highlights and Historical Trends

**Table 1 – 6
Victims of Motor Vehicle Crashes**

Age of Victim	Persons Killed				Persons Injured			
	Total	Male	Female	Gender Unknown	Total	Male	Female	Gender Unknown
0-4	10	7	3	0	917	484	433	0
5-9	13	9	4	0	1,220	613	607	0
10-14	21	14	7	0	1,494	722	772	0
15-19	74	41	33	0	5,207	2,436	2,771	0
20-24	101	80	21	0	6,901	3,411	3,490	0
25-34	149	106	43	0	9,445	4,673	4,772	0
35-44	106	86	20	0	7,383	3,474	3,909	0
45-54	121	88	33	0	7,011	3,392	3,619	0
55-64	110	81	29	0	5,145	2,463	2,682	0
65-74	51	33	18	0	2,810	1,306	1,504	0
75 & Older	64	43	21	0	1,637	754	883	0
Unknown	1	0	0	1	726	327	290	109
TOTAL	821	588	232	1	49,896	24,055	25,732	109

**Table 1 – 7
Arizona’s 2012 Estimated Population**

Race/Ethnic group	Population Percentage	Traffic Crash Fatality Percentage	Population Estimate*
White non-Hispanic	58.83%	54.50%	3,822,879
Hispanic or Latino	29.43%	25.37%	1,912,854
Black or African American	4.08%	**	265,230
American Indian or Alaska Native	4.69%	**	305,029
Asian or Pacific Islander	2.96%	**	192,579
Ethnicity Unknown	N/A	N/A	N/A
TOTAL	100.00%	**	6,498,571

Source: Arizona Department of Health Services, Health Status and Vital Statistics Section.
 *Population estimates for 2012 are available at www.azdhs.gov/plan/menu/info/pop/pop12/pd12.htm
 **Data not released by Arizona Department of Health Services, Health Status and Vital Statistics Section

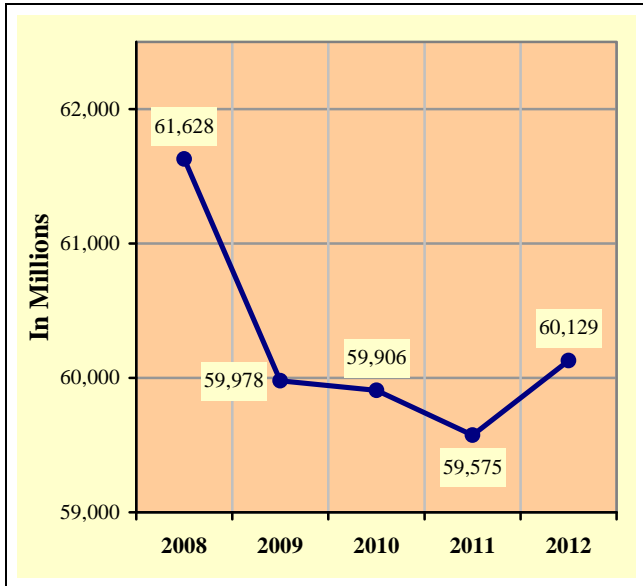
**Table 1 – 8
Victims of Motor Vehicle Crashes (Arizona Residents Only)***

Age of Victim	Total Killed	Male	Female	Detail Breakdown:					
				White non-Hispanic	Hispanic or Latino	Black or African American	American Indian or Alaska Native	Asian or Pacific Islander	Ethnicity Unknown
1-14	34	23	11	8	10	2	14	0	0
15-19	74	44	30	30	28	**	10	**	0
20-44	319	238	81	138	99	15	63	4	0
45-64	211	155	56	142	40	**	25	**	0
65 & Older	107	80	27	88	12	**	**	0	0
TOTAL	745	540	205	406	189	**	**	**	0

Source: Arizona Department of Health Services, Health Status and Vital Statistics Section (www.azdhs.gov/plan/report/ahs/ahs2012/toc12.htm).
 *Includes victims of crashes occurring outside Arizona.
 **Data not released by Arizona Department of Health Services, Health Status and Vital Statistics Section

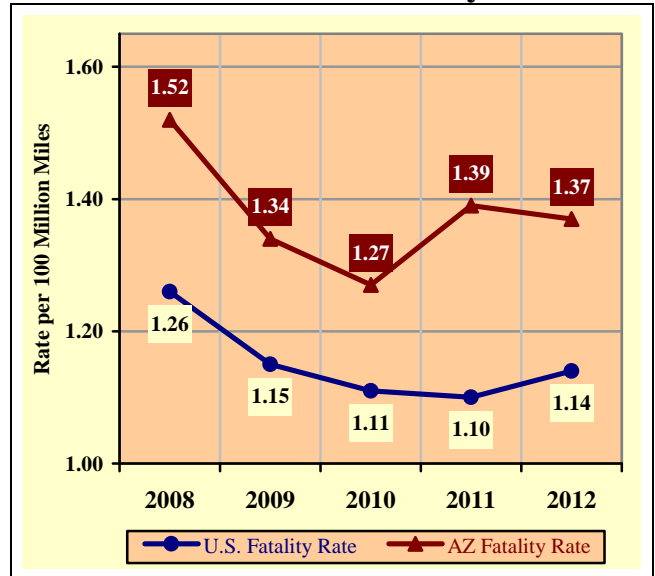
Section 1: – Highlights and Historical Trends

Chart 1 – 5
Vehicle Miles Traveled



Source: ADOT – Multimodal Planning Division – Data Bureau

Chart 1 – 6
Arizona vs. U.S. Fatality Rate



Source for U.S. Fatality Rate: www.nhtsa.gov

Chart 1 – 7
Traffic Fatalities by Geographic Region

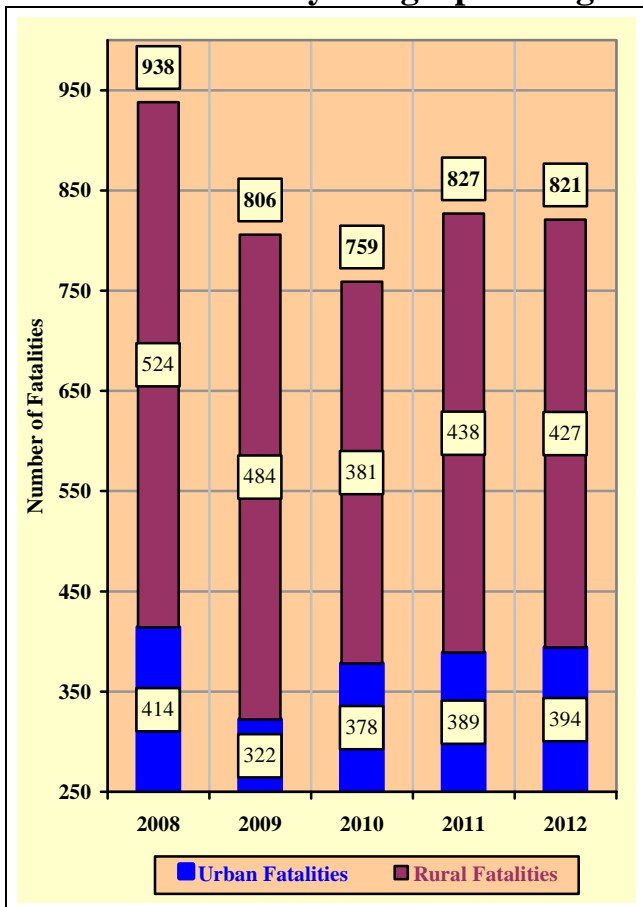
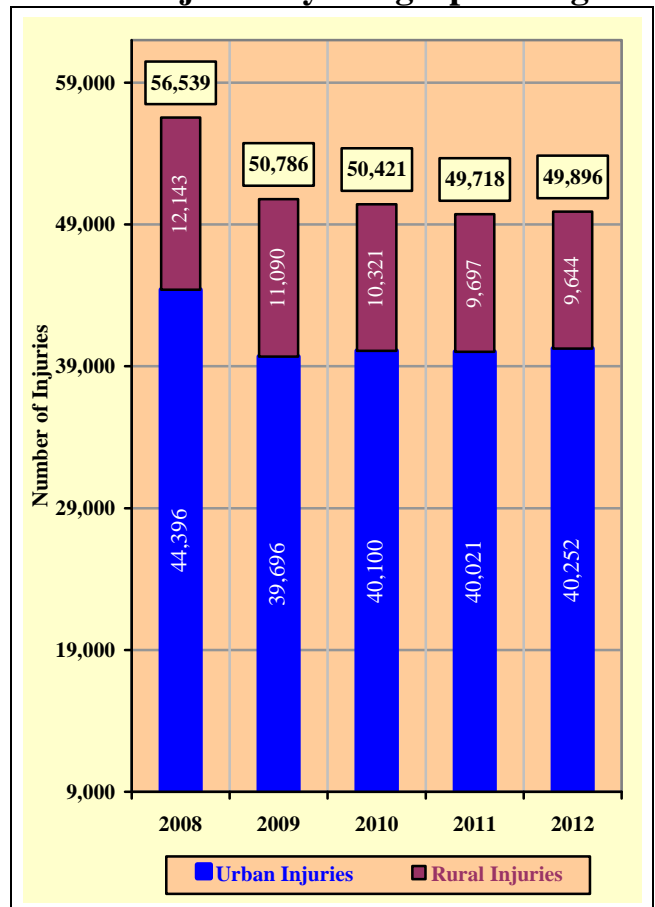


Chart 1 – 8
Traffic Injuries by Geographic Region



Section 1: – Highlights and Historical Trends

Table 1 – 9

Holiday Crash Statistics

Holidays such as Memorial Day, Labor Day, and Thanksgiving are regarded as three or four day weekend holidays for statistical purposes. Holidays such as Christmas, New Year’s Day, and the Fourth of July are celebrated on specific dates; which make the holiday period range from two to five days in length.

Holiday fatality statistics are based on fatal crashes occurring from 6:00 p.m. on the last working day prior to the holiday through 5:59 a.m. the day following the holiday period. Example: Thanksgiving fatalities are counted from Wednesday evening at 6:00 p.m. through 5:59 a.m. of the following Monday.

2012 Holidays	Beginning at 6:00 p.m.	Ending at 5:59 a.m.	Number of Days	Fatal Crashes	Persons Killed	Alcohol Related Fatal Crashes	Alcohol Related Fatalities
New Year’s Day	Friday	Tuesday	4	14	14	5	5
	12/30/2011	1/3/2012					
Memorial Day	Friday	Tuesday	4	7	8	5	6
	5/25/2012	5/29/2012					
July 4th	Tuesday	Thursday	2	5	6	5	6
	7/3/2012	7/5/2012					
Labor Day	Friday	Tuesday	4	15	18	5	5
	8/31/2012	9/4/2012					
Thanksgiving Day	Wednesday	Monday	5	11	11	3	3
	11/21/2012	11/26/2012					
Christmas Day	Friday	Wednesday	5	4	4	2	2
	12/21/2012	12/26/2012					

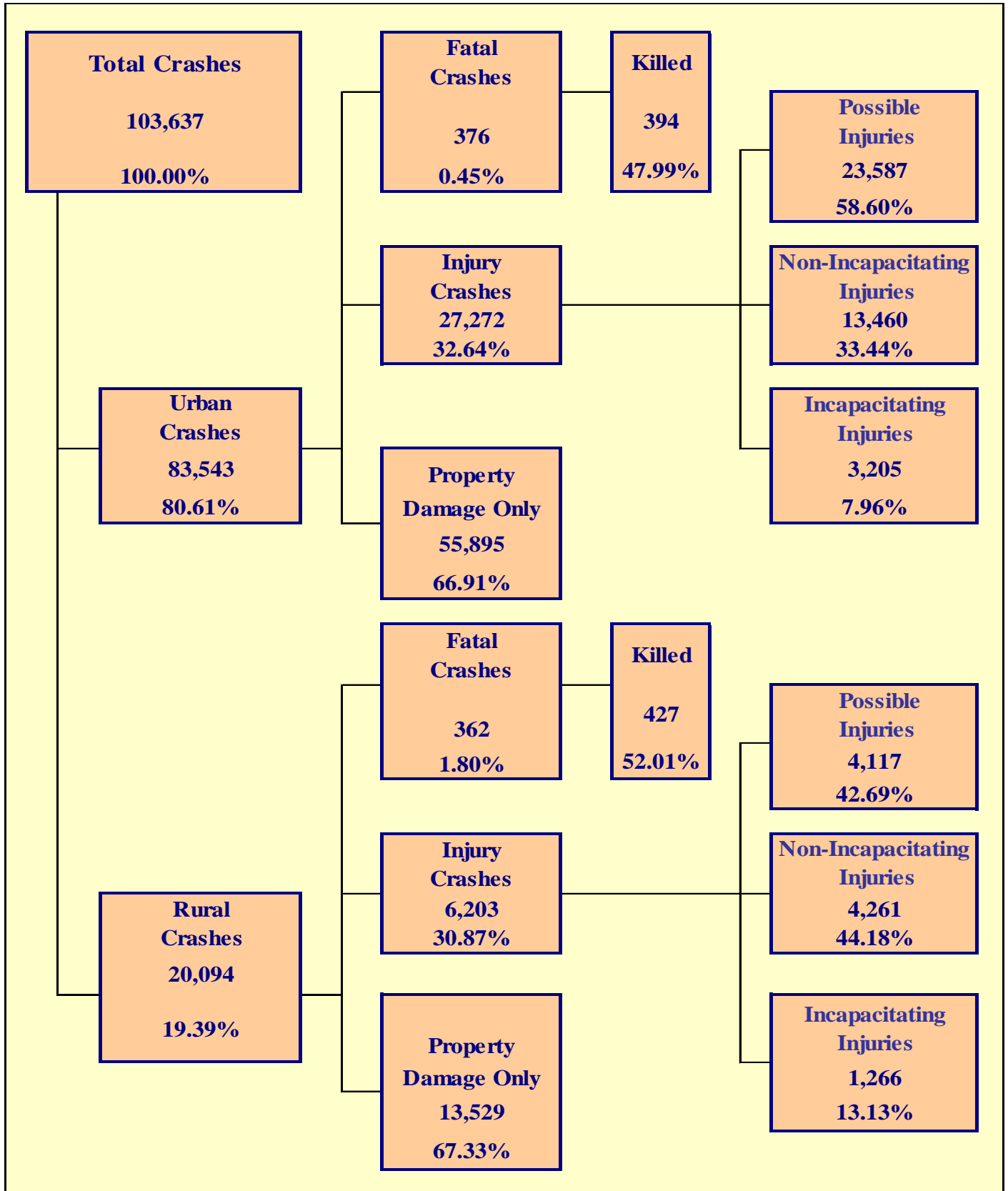
Fatal Crashes by Year	New Year’s Day	Memorial Day	July 4th	Labor Day	Thanksgiving	Christmas Day	Total
2008	10	14	13	14	5	2	58
2009	10	6	7	5	11	7	46
2010	9	8	14	9	11	9	60
2011	5	8	9	7	12	6	47
2012	14	7	5	15	11	4	56

Persons Killed	New Year’s Day	Memorial Day	July 4th	Labor Day	Thanksgiving	Christmas Day	Total
2008	11	17	15	19	5	2	69
2009	11	7	7	7	12	7	51
2010	10	8	16	11	12	10	67
2011	5	9	11	8	14	6	53
2012	14	8	6	18	11	4	61

Number of Days	New Year’s Day	Memorial Day	July 4th	Labor Day	Thanksgiving	Christmas Day	Total
2008	5	4	4	4	5	5	27
2009	5	4	4	4	5	4	26
2010	4	4	4	4	5	4	25
2011	4	4	4	4	5	4	25
2012	4	4	2	4	5	5	24

Section 2

Geographic Location



Section 2: – Geographic Location

Fatal Crashes in Arizona (738) accounted for 0.71% of all crashes, Injury Crashes (33,475) accounted for 32.30%, and Property Damage Only (PDO) Crashes (69,424) accounted for 66.99%.

**Table 2 – 1
Crash Severity by First Harmful Event Statewide**

First Harmful Event Type	Number of Crashes				Number of Persons	
	Total	Fatal	Injury	PDO	Killed	Injured
Collision with Motor Vehicle in Transport	65,992	240	19,764	45,988	280	31,111
Overturning	2,328	149	1,499	680	170	2,294
Collision with Pedestrian	1,191	128	926	137	129	1,010
Collision with Pedalcyclist	1,731	18	1,382	331	18	1,429
Collision with Animal	1,690	4	159	1,527	4	221
Collision with Fixed Object	11,032	161	3,360	7,511	178	4,199
Collision with Non-fixed Object*	4,344	10	414	3,920	10	521
Vehicle Fire or Explosion	320	2	8	310	4	9
Other Non-collision**	1,196	15	400	781	15	440
Unknown	13,813	11	5,563	8,239	13	8,662
TOTAL	103,637	738	33,475	69,424	821	49,896
*Includes Collision with Parked Vehicles, Trains, Railway Vehicles, and Work Zone Equipment						
**Includes Vehicle Immersion, Jackknife, and Cargo Loss or Shift						

**Table 2 – 2
Crashes by County**

County	Number of Crashes				Number of Persons	
	Total	Fatal	Injury	PDO	Killed	Injured
Apache	464	39	165	260	47	322
Cochise	1,583	17	428	1,138	22	591
Coconino	3,569	47	849	2,673	57	1,209
Gila	788	15	244	529	18	372
Graham	275	3	77	195	3	116
Greenlee	91	5	20	66	6	36
La Paz	351	17	112	222	18	219
Maricopa	72,232	312	23,065	48,855	336	34,360
Mohave	2,885	34	894	1,957	45	1,393
Navajo	1,033	28	319	686	33	554
Pima	10,401	102	4,201	6,098	105	6,135
Pinal	3,663	52	1,133	2,478	59	1,767
Santa Cruz	562	9	142	411	9	190
Yavapai	3,062	36	940	2,086	39	1,330
Yuma	2,678	22	886	1,770	24	1,302
TOTAL	103,637	738	33,475	69,424	821	49,896

Section 2: – Geographic Location

Table 2 – 3
Crash Severity by First Harmful Event in Urban Areas

First Harmful Event Type	Number of Crashes				Number of Persons	
	Total	Fatal	Injury	PDO	Killed	Injured
Collision with Motor Vehicle in Transport	56,364	138	16,833	39,393	147	26,143
Overturning	639	37	440	162	41	588
Collision with Pedestrian	1,038	96	824	118	96	896
Collision with Pedalcyclist	1,609	15	1,283	311	15	1,319
Collision with Animal	255	0	23	232	0	28
Collision with Fixed Object	7,273	80	2,219	4,974	85	2,668
Collision with Non-fixed Object*	3,365	2	308	3,055	2	366
Vehicle Fire or Explosion	108	0	4	104	0	5
Other Non-collision**	650	6	256	388	6	270
Unknown	12,242	2	5,082	7,158	2	7,969
TOTAL	83,543	376	27,272	55,895	394	40,252
*Includes Collision with Parked Vehicles, Trains, Railway Vehicles, and Work Zone Equipment						
**Includes Vehicle Immersion, Jackknife, and Cargo Loss or Shift						

Table 2 – 4
Crash Severity by First Harmful Event in Rural Areas

First Harmful Event Type	Number of Crashes				Number of Persons	
	Total	Fatal	Injury	PDO	Killed	Injured
Collision with Motor Vehicle in Transport	9,628	102	2,931	6,595	133	4,968
Overturning	1,689	112	1,059	518	129	1,706
Collision with Pedestrian	153	32	102	19	33	114
Collision with Pedalcyclist	122	3	99	20	3	110
Collision with Animal	1,435	4	136	1,295	4	193
Collision with Fixed Object	3,759	81	1,141	2,537	93	1,531
Collision with Non-fixed Object*	979	8	106	865	8	155
Vehicle Fire or Explosion	212	2	4	206	4	4
Other Non-collision**	546	9	144	393	9	170
Unknown	1,571	9	481	1,081	11	693
TOTAL	20,094	362	6,203	13,529	427	9,644
*Includes Collision with Parked Vehicles, Trains, Railway Vehicles, and Work Zone Equipment						
**Includes Vehicle Immersion, Jackknife, and Cargo Loss or Shift						

While Urban Crashes in Arizona (83,543) accounted for 80.61% of all crashes, they accounted for 50.95% of all Fatal Crashes (376) occurring in 2012.

While Rural Crashes in Arizona (20,094) accounted for 19.39% of all crashes, they accounted for 49.05% of all Fatal Crashes (362) occurring in 2012.

Section 2: – Geographic Location

Table 2 – 5

Analysis by Jurisdiction

COUNTIES Cities	Number of Crashes				No. of Persons		Alcohol Related		
	Total	Fatal	Injury	PDO	Killed	Injured	Crashes	Killed	Injured
Apache County	411	38	148	225	46	295	39	18	54
Eagar	28	0	9	19	0	15	5	0	9
St. Johns	7	0	4	3	0	8	0	0	0
Springerville	18	1	4	13	1	4	2	1	1
TOTAL	464	39	165	260	47	322	46	19	64

Cochise County	619	13	179	427	17	258	39	3	22
Benson	70	0	20	50	0	29	5	0	3
Bisbee	5	0	1	4	0	1	1	0	1
Douglas	190	0	42	148	0	60	4	0	5
Huachuca City	6	0	4	2	0	9	0	0	0
Sierra Vista	663	3	172	488	4	221	31	1	13
Tombstone	1	0	1	0	0	2	0	0	0
Willcox	29	1	9	19	1	11	1	0	2
TOTAL	1,583	17	428	1,138	22	591	81	4	46

Coconino County	1,244	36	328	880	46	522	63	14	51
Flagstaff	1,894	6	421	1,467	6	555	79	5	37
Fredonia	2	0	0	2	0	0	0	0	0
Williams	113	0	17	96	0	18	3	0	1
Page	101	2	31	68	2	50	18	2	11
Sedona	215	3	52	160	3	64	7	1	2
TOTAL	3,569	47	849	2,673	57	1,209	170	22	102

Gila County	507	13	169	325	16	257	30	6	31
Globe	149	1	35	113	1	50	10	0	3
Hayden	0	0	0	0	0	0	0	0	0
Miami	9	0	2	7	0	4	0	0	0
Payson	122	1	37	84	1	60	5	0	2
Winkelman	1	0	1	0	0	1	0	0	0
TOTAL	788	15	244	529	18	372	45	6	36

Graham County	116	1	34	81	1	50	15	0	6
Pima	2	0	1	1	0	1	1	0	1
Safford	110	2	29	79	2	40	10	1	3
Thatcher	47	0	13	34	0	25	4	0	6
TOTAL	275	3	77	195	3	116	30	1	16

Greenlee County	54	4	16	34	5	27	5	1	6
Clifton	36	0	4	32	0	6	0	0	0
Duncan	1	1	0	0	1	3	1	1	3
TOTAL	91	5	20	66	6	36	6	2	9

Section 2: – Geographic Location

Table 2 – 5

Analysis by Jurisdiction

COUNTIES Cities	Number of Crashes				No. of Persons		Alcohol Related		
	Total	Fatal	Injury	PDO	Killed	Injured	Crashes	Killed	Injured
La Paz County	302	17	101	184	18	192	13	2	11
Parker	24	0	8	16	0	15	2	0	3
Quartzite	25	0	3	22	0	12	0	0	0
TOTAL	351	17	112	222	18	219	15	2	14

Maricopa County	5,327	45	1,740	3,542	58	2,657	259	16	200
Avondale	985	2	292	691	2	443	52	1	27
Buckeye	453	6	140	307	6	222	35	3	23
Cave Creek	54	0	22	32	0	28	9	0	6
Chandler	3,885	18	1,142	2,725	18	1,635	180	2	122
El Mirage	378	2	107	269	2	162	27	0	17
Gila Bend	44	1	13	30	1	14	1	1	0
Gilbert	2,541	7	596	1,938	9	842	110	4	54
Glendale	4,750	19	1,382	3,349	21	2,113	221	8	168
Goodyear	914	1	292	621	1	433	52	1	42
Mesa	6,667	28	2,174	4,465	29	3,040	279	9	189
Paradise Valley	200	0	60	140	0	77	7	0	6
Peoria	2,109	11	643	1,455	11	961	104	5	46
Phoenix	30,674	142	10,377	20,155	148	15,867	1,365	57	970
Scottsdale	3,909	11	1,252	2,646	11	1,766	258	2	138
Surprise	1,025	7	284	734	7	435	42	1	23
Tempe	7,144	6	2,213	4,925	6	3,179	310	2	199
Tolleson	421	1	119	301	1	179	20	0	15
Wickenburg	78	0	13	65	0	23	4	0	3
Youngtown	31	0	8	23	0	8	1	0	0
Guadalupe	288	2	96	190	2	119	5	0	5
Litchfield Park	41	1	13	27	1	17	1	0	1
Queen Creek	172	0	42	130	0	67	11	0	5
Fountain Hills	123	1	39	83	1	55	12	0	3
Carefree	19	1	6	12	1	8	1	0	0
TOTAL	72,232	312	23,065	48,855	336	34,350	3,366	112	2,262

Mohave County	1,090	26	371	693	37	655	79	14	68
Kingman	546	6	161	379	6	229	23	1	16
Lake Havasu City	627	0	169	458	0	209	52	0	20
Bullhead City	603	2	190	411	2	296	40	0	28
Colorado City	19	0	3	16	0	4	0	0	0
TOTAL	2,885	34	894	1,957	45	1,393	194	15	132

Section 2: – Geographic Location

Table 2 – 5

Analysis by Jurisdiction

COUNTIES Cities	Number of Crashes				No. of Persons		Alcohol Related		
	Total	Fatal	Injury	PDO	Killed	Injured	Crashes	Killed	Injured
Navajo County	445	25	158	262	30	304	51	10	50
Holbrook	76	1	13	62	1	23	7	1	6
Show Low	196	0	62	134	0	102	17	0	6
Snowflake	47	0	14	33	0	24	5	0	1
Taylor	53	1	18	34	1	22	4	1	2
Winslow	103	1	21	81	1	29	10	1	5
Pinetop-Lakeside	113	0	33	80	0	50	5	0	7
TOTAL	1,033	28	319	686	33	554	99	13	77

Pima County	3,779	50	1,144	2,585	51	1,691	253	25	190
South Tucson	96	0	37	59	0	57	6	0	8
Tucson	5,021	43	2,622	2,356	45	3,830	531	25	370
Sahuarita	216	2	65	149	2	94	14	0	6
Oro Valley	462	2	144	316	2	201	16	1	13
Marana	827	5	189	633	5	262	16	0	3
TOTAL	10,401	102	4,201	6,098	105	6,135	836	51	590

Pinal County	1,796	33	583	1,180	37	942	98	13	97
Casa Grande	878	7	250	621	10	373	32	2	13
Coolidge	142	1	48	93	1	71	10	0	8
Eloy	105	2	31	72	2	61	3	0	4
Florence	65	0	22	43	0	29	3	0	2
Kearny	3	0	1	2	0	1	0	0	0
Mammoth	0	0	0	0	0	0	0	0	0
Superior	5	1	1	3	1	1	1	1	0
Apache Junction	418	6	117	295	6	173	22	1	13
Maricopa	251	2	80	169	2	116	19	1	6
TOTAL	3,663	52	1,133	2,478	59	1,767	188	18	143

Santa Cruz County	280	4	81	195	4	110	16	2	12
Nogales	281	5	61	215	5	80	13	1	1
Patagonia	1	0	0	1	0	0	1	0	0
TOTAL	562	9	142	411	9	190	30	3	13

Yavapai County	1,257	27	389	841	30	567	65	6	43
Clarkdale	21	2	5	14	2	9	4	2	4
Cottonwood	254	0	83	171	0	116	17	0	9
Jerome	1	0	1	0	0	2	1	0	2
Prescott	780	5	243	532	5	319	39	0	29
Prescott Valley	492	1	151	340	1	218	29	0	18
Chino Valley	141	1	34	106	1	52	9	1	6
Camp Verde	105	0	31	74	0	44	8	0	10
Dewey-Humboldt	11	0	3	8	0	3	1	0	0
TOTAL	3,062	36	940	2,086	39	1,330	173	9	121

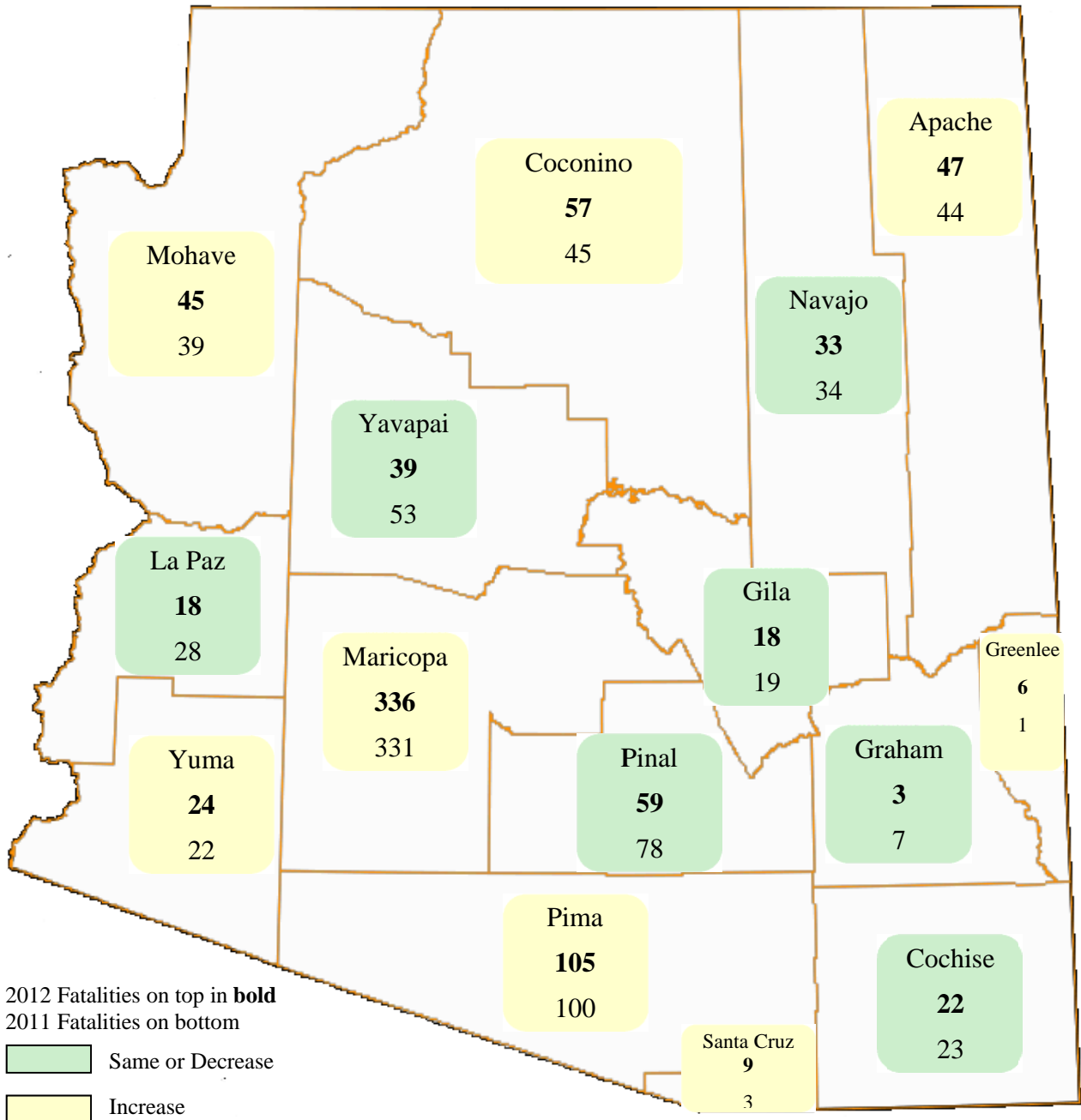
Section 2: – Geographic Location

Table 2 – 5
Analysis by Jurisdiction

COUNTIES Cities	Number of Crashes				No. of Persons		Alcohol Related		
	Total	Fatal	Injury	PDO	Killed	Injured	Crashes	Killed	Injured
Yuma County	691	13	209	469	14	310	39	2	28
Somerton	21	1	3	17	1	4	1	1	0
Yuma	1,796	8	643	1,145	9	949	123	1	90
Wellton	10	0	4	6	0	7	0	0	0
San Luis	160	0	27	133	0	32	2	0	1
TOTAL	2,678	22	886	1,770	24	1,302	165	4	119

Note: Some individual city data may be incomplete due to lack of timely reporting or changes in crash reporting procedures.

Total Fatalities by County for 2011 and 2012



Section 2: – Geographic Location

Chart 2 – 1

Urban and Rural Crashes by Day of Week

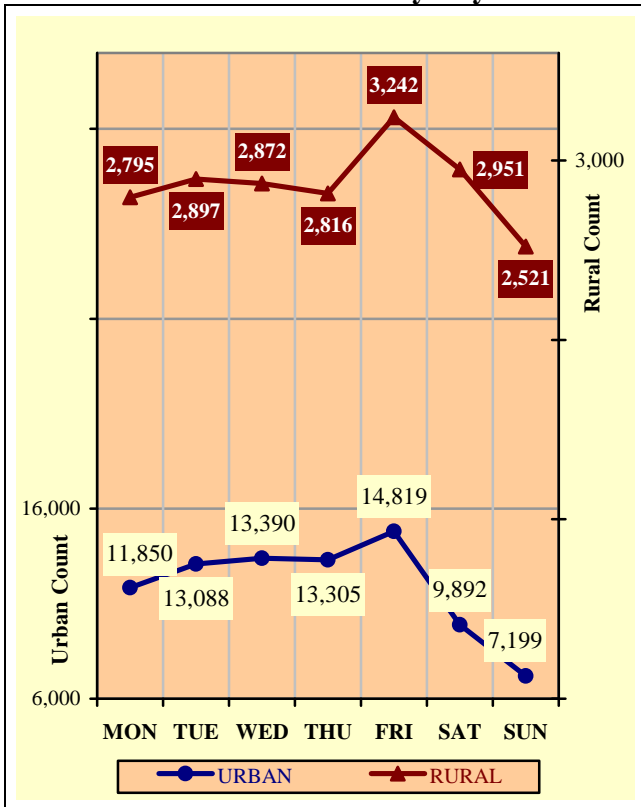


Chart 2 – 2

Urban and Rural Fatal Crashes by Day of Week

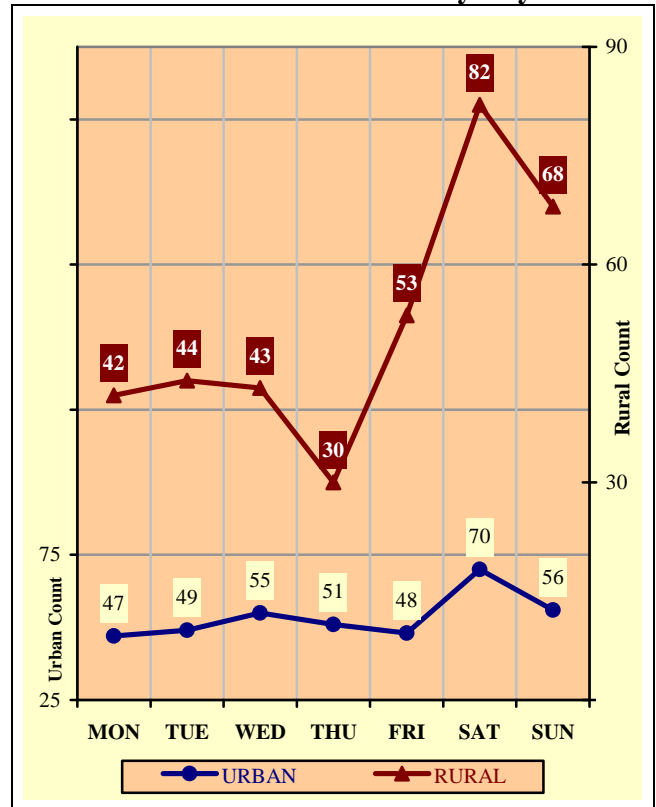
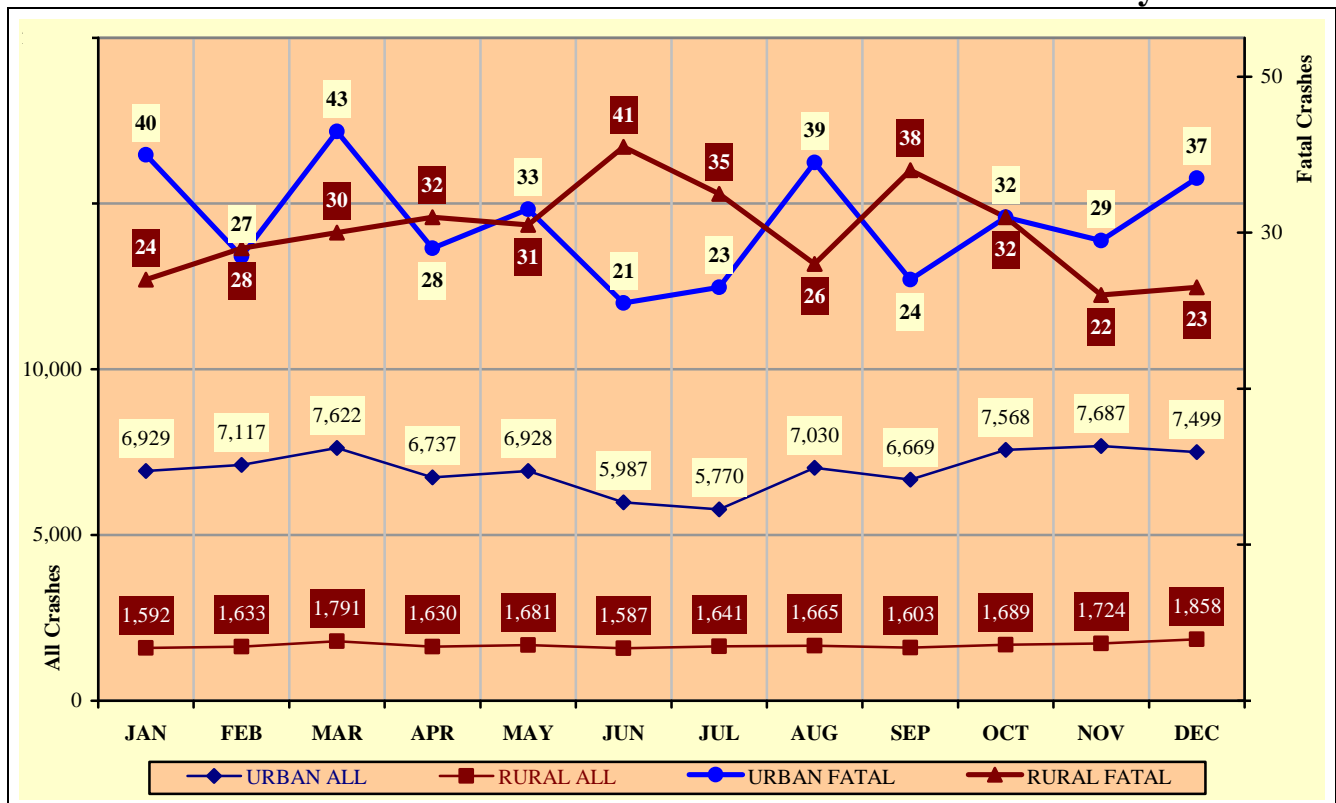


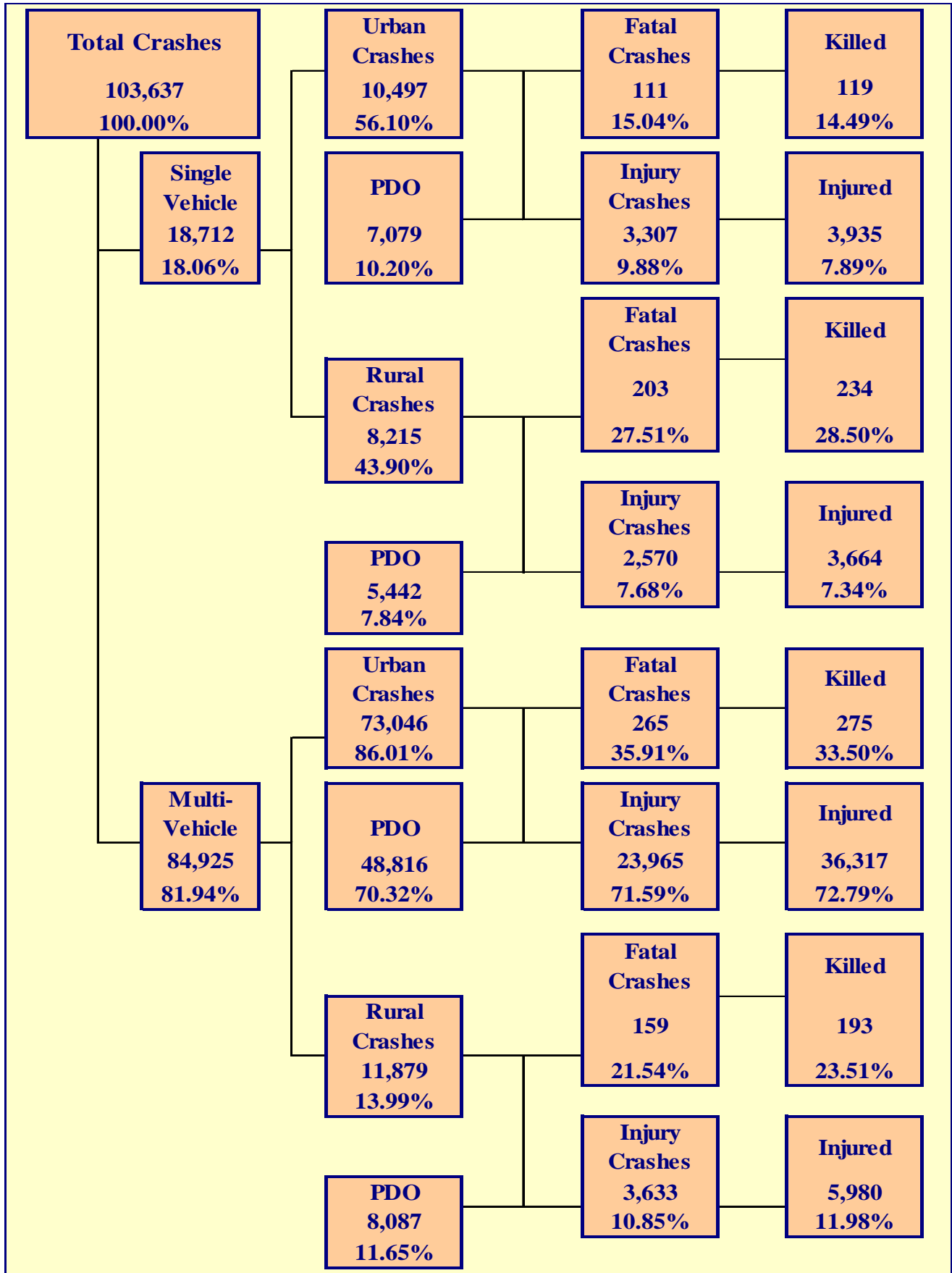
Chart 2 – 3

All Urban and Rural Crashes vs. Urban and Rural Fatal Crashes by Month



Section 3

Crash Descriptions



Section 3: – Crash Descriptions

Table 3 – 1
Manner of Collision in Multi-Vehicle Crashes

Manner of Collision Type	Number of Crashes							
	Total	Percent of Total Crashes	Fatal	Percent of Fatal Crashes	Injury	Percent of Injury Crashes	PDO	Percent of PDO Crashes
Angle	14,683	17.29%	63	14.86%	5,972	21.64%	8,648	15.20%
Left Turn	12,140	14.29%	44	10.38%	5,290	19.17%	6,806	11.96%
Rear End	38,719	45.59%	50	11.79%	11,943	43.27%	26,726	46.97%
Head-On	1,495	1.76%	53	12.50%	733	2.66%	709	1.25%
Sideswipe (same)	10,900	12.83%	19	4.48%	1,536	5.57%	9,345	16.42%
Sideswipe (opposite)	1,296	1.53%	5	1.18%	323	1.17%	968	1.70%
Rear to Side	919	1.08%	0	0.00%	74	0.27%	845	1.48%
Rear to Rear	289	0.34%	0	0.00%	49	0.18%	240	0.42%
Other	3,583	4.22%	185	43.63%	1,474	5.34%	1,924	3.38%
Unknown	901	1.06%	5	1.18%	204	0.74%	692	1.22%
TOTAL	84,925	100.00%	424	100.00%	27,598	100.00%	56,903	100.00%

Table 3 – 2
Lighting Conditions

Type of Lighting Conditions	Number of Crashes				Number of Persons	
	Total	Fatal	Injury	PDO	Killed	Injured
Daylight	73,769	335	23,775	49,659	380	35,364
Dawn	1,637	15	512	1,110	16	769
Dusk	3,192	24	1,111	2,057	25	1,627
Dark - Lighted	18,070	158	6,174	11,738	168	9,256
Dark - Not Lighted	6,230	148	1,765	4,317	170	2,669
Dark - Unknown Lighting	739	58	138	543	62	211
TOTAL	103,637	738	33,475	69,424	821	49,896

Table 3 – 3
Weather Conditions

Type of Weather Conditions	Number of Crashes				Number of Persons	
	Total	Fatal	Injury	PDO	Killed	Injured
Clear	92,321	585	30,048	61,688	651	44,750
Cloudy	7,357	57	2,414	4,886	67	3,599
Sleet/Hail	102	0	30	72	0	49
Rain	2,294	12	654	1,628	13	952
Snow	534	1	106	427	1	183
Severe Crosswinds	102	2	32	68	2	41
Blowing Sand, Soil, Dirt	98	2	36	60	2	74
Fog, Smog, Smoke	11	0	3	8	0	4
Blowing Snow	19	1	2	16	1	5
Other	50	1	20	29	1	33
Unknown	749	77	130	542	83	206
TOTAL	103,637	738	33,475	69,424	821	49,896

Section 3: – Crash Descriptions

Table 3 – 4
Road Surface Conditions

Type of Road Surface Condition	Number of Drivers				Number of Persons	
	Total	In Fatal Crashes	In Injury Crashes	In PDO Crashes	Killed	Injured
Dry	186,399	987	61,429	123,983	702	47,592
Wet	5,304	22	1,619	3,663	16	1,338
Snow	730	2	135	593	1	138
Slush	120	0	26	94	0	35
Ice/Frost	391	1	98	292	1	116
Water (standing or moving)	74	3	23	48	2	28
Sand	58	1	22	35	1	26
Mud, Dirt, Gravel	589	13	198	378	16	238
Oil	54	0	15	39	0	8
Other	86	0	28	58	0	25
Unknown	2,825	88	570	2,167	82	352
TOTAL	196,630	1,117	64,163	131,350	821	49,896

Table 3 – 5
Roadway Grade

Type of Roadway Grade	Number of Drivers				Number of Persons	
	Total	In Fatal Crashes	In Injury Crashes	In PDO Crashes	Killed	Injured
Level	178,942	838	58,533	119,571	585	44,946
Downhill	7,783	98	2,677	5,008	79	2,502
Uphill	5,987	63	1,906	4,018	51	1,656
Hillcrest	466	25	181	260	18	189
Sag/Dip/Bottom	169	3	73	93	3	77
Unknown	3,283	90	793	2,400	85	526
TOTAL	196,630	1,117	64,163	131,350	821	49,896

Table 3 – 6
Roadway Alignment

Type of Roadway Alignment	Number of Drivers				Number of Persons	
	Total	In Fatal Crashes	In Injury Crashes	In PDO Crashes	Killed	Injured
Straight	151,011	865	47,315	102,831	597	36,073
Curve Left	4,854	82	1,564	3,208	72	1,565
Curve Right	5,118	79	1,542	3,497	65	1,487
Unknown	35,647	91	13,742	21,814	87	10,771
TOTAL	196,630	1,117	64,163	131,350	821	49,896

Section 3: – Crash Descriptions

Chart 3 – 1

All Crashes vs. Fatal Crashes by Time of Day - Weekdays

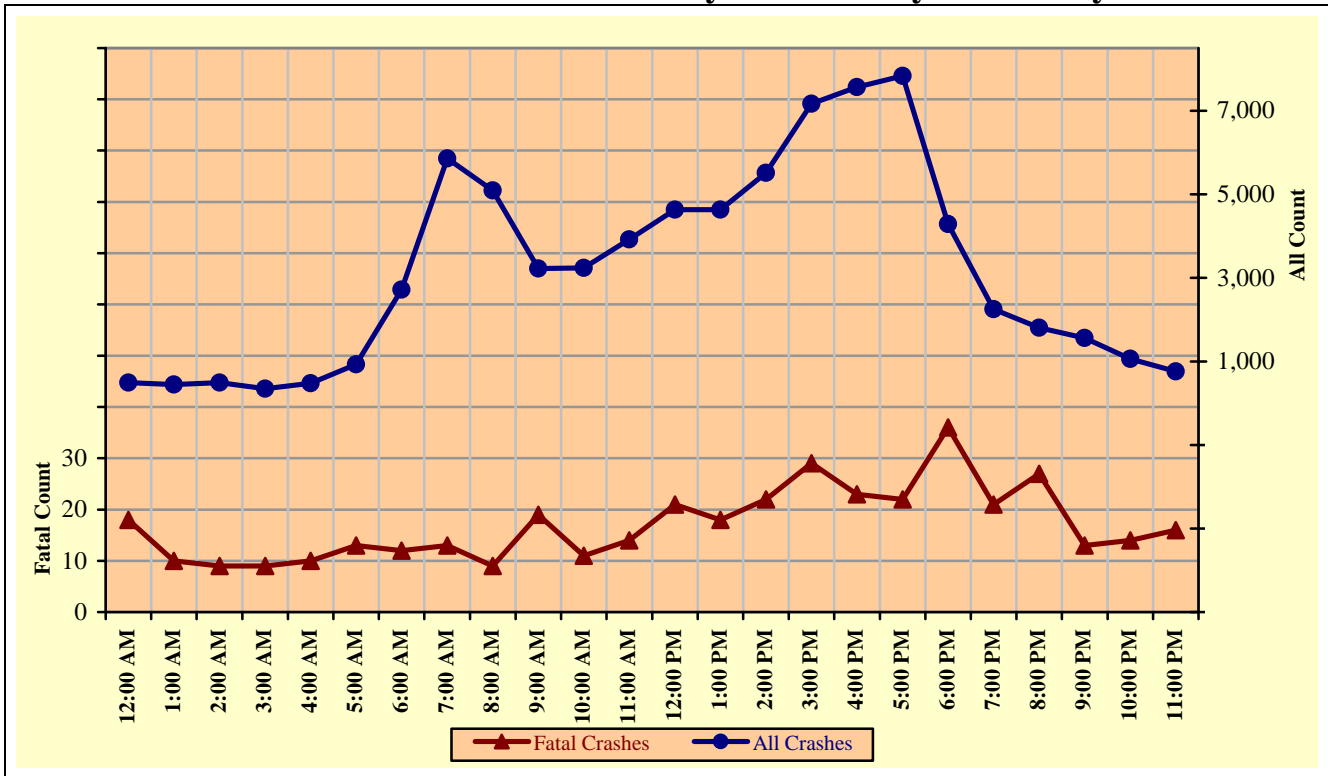
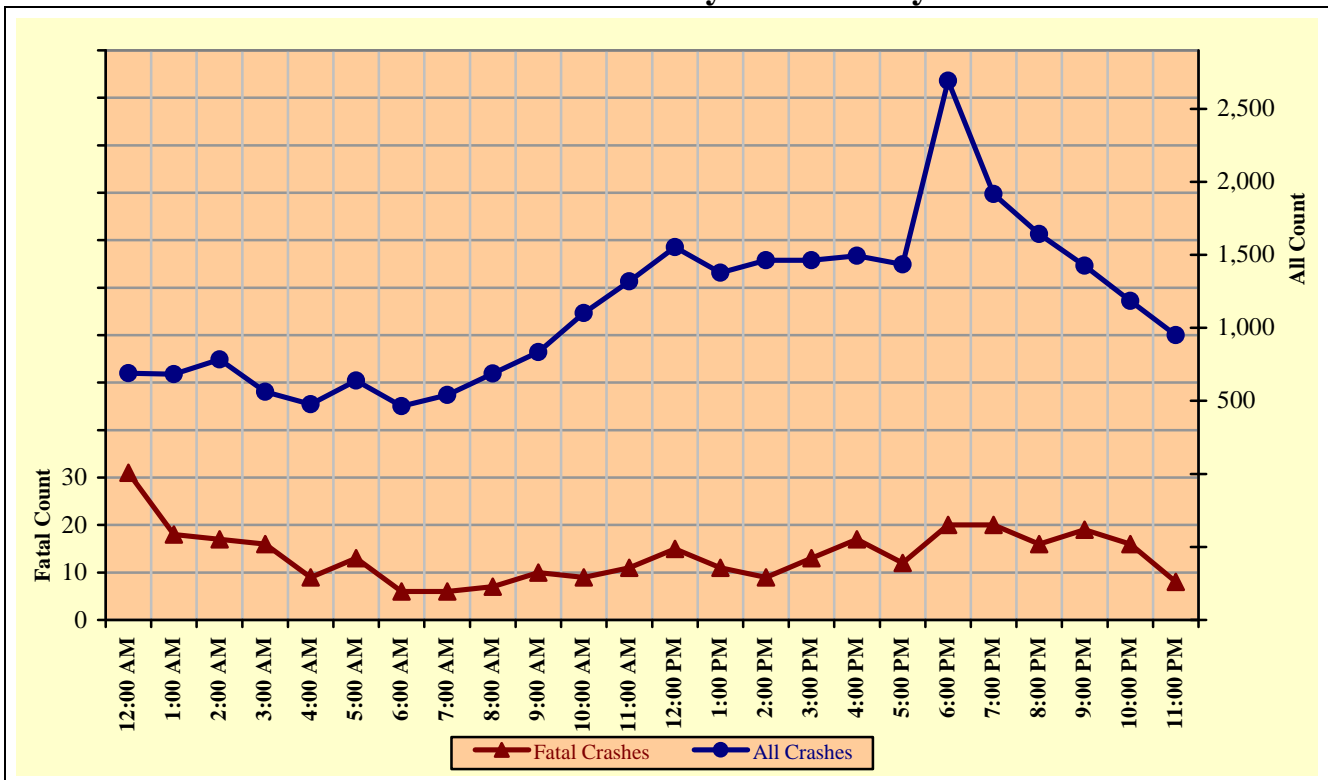


Chart 3 – 2

All Crashes vs. Fatal Crashes by Time of Day - Weekends



Section 3: – Crash Descriptions

Chart 3 – 3
Crashes by Day of Week

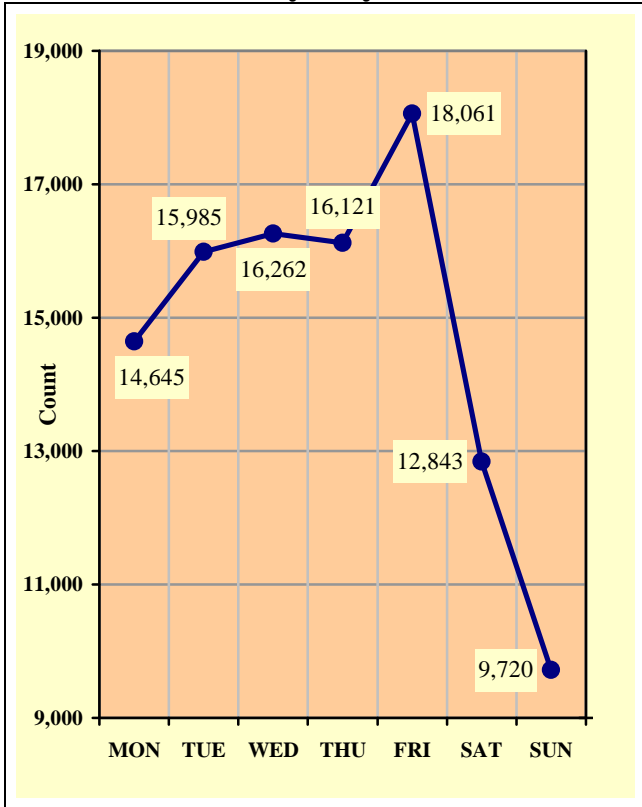


Chart 3 – 4
Fatal Crashes by Day of Week

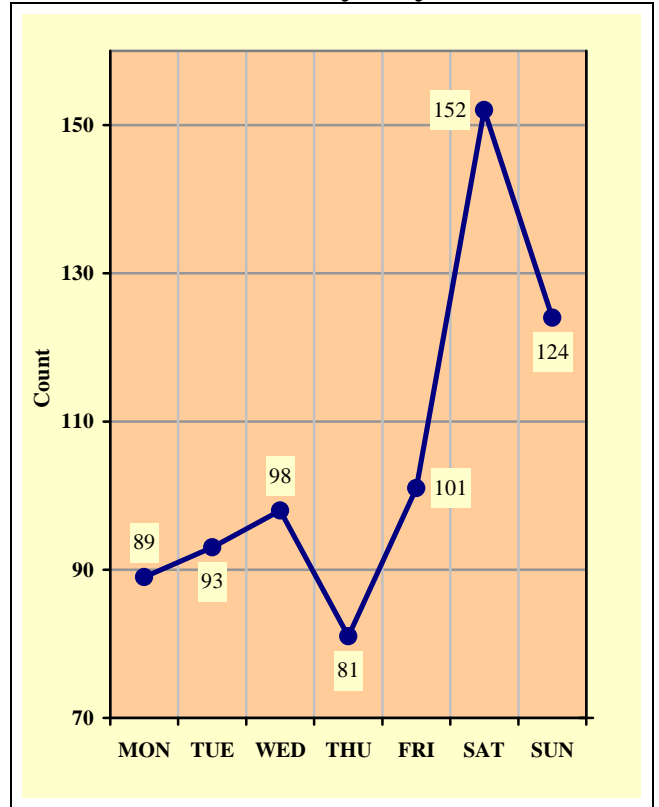
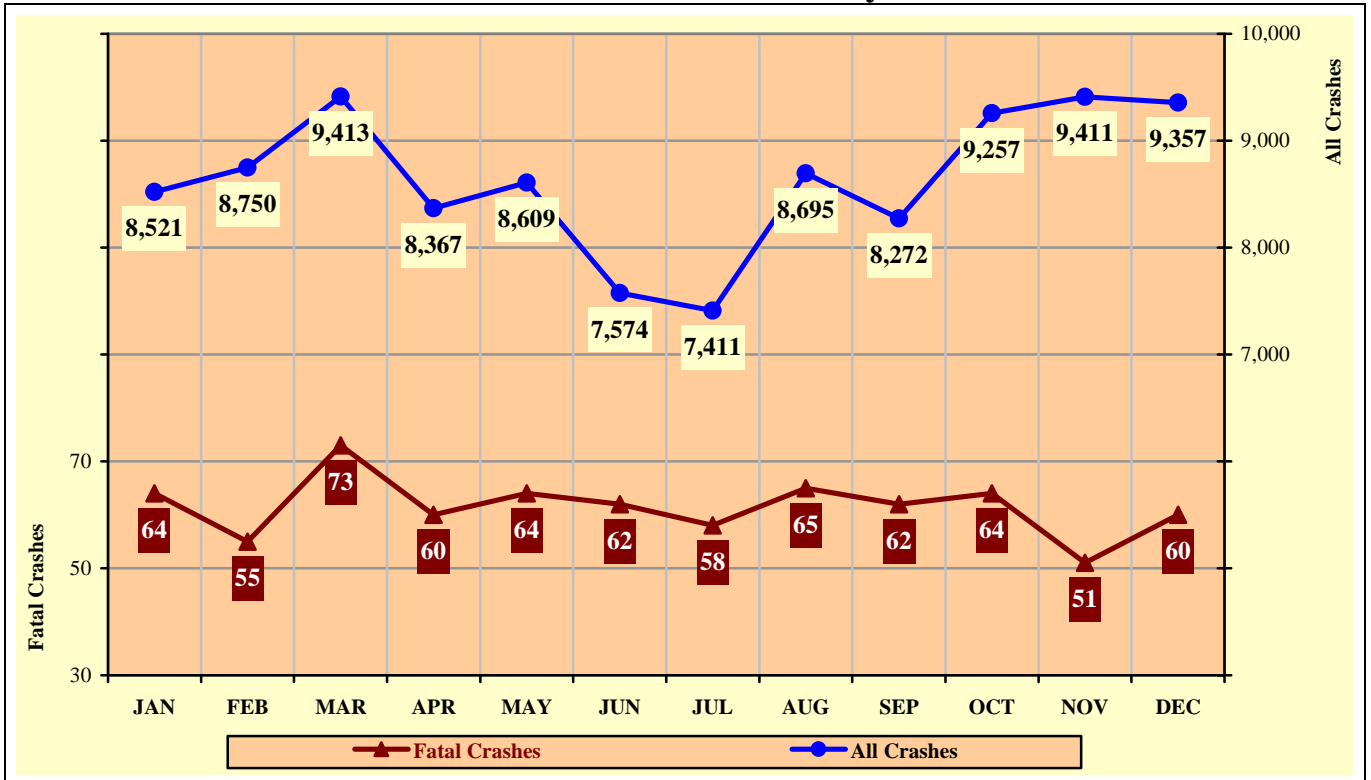


Chart 3 – 5
All Crashes vs. Fatal Crashes by Month



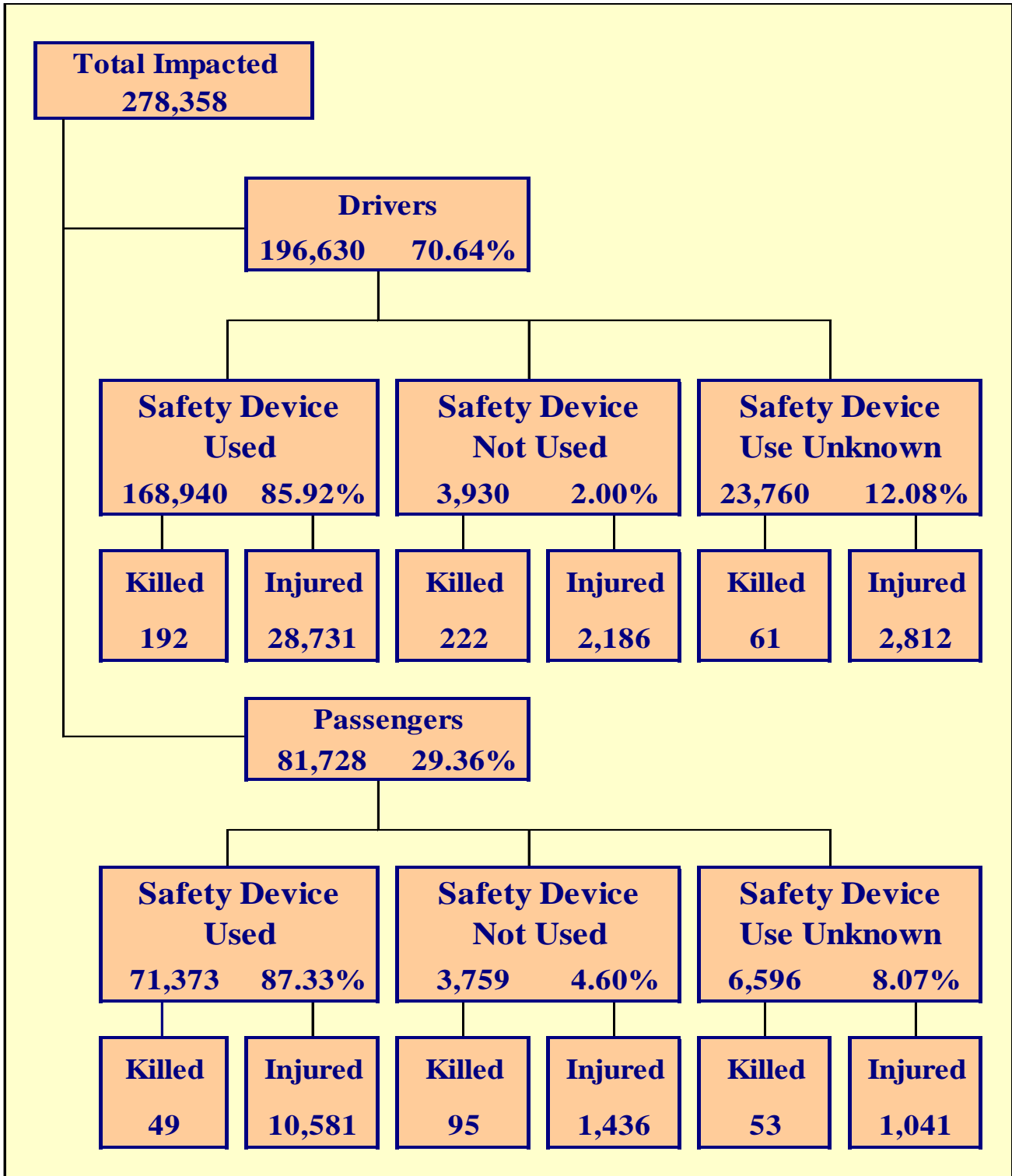
Section 3: – Crash Descriptions

**Table 3 – 7
Crashes by Hour and Day of Week**

Hour Beginning	Total Crashes		Monday		Tuesday		Wednesday		Thursday		Friday		Saturday		Sunday		Weekdays		Weekends	
	All	Fatal	All	Fatal	All	Fatal	All	Fatal	All	Fatal	All	Fatal	All	Fatal	All	Fatal	All	Fatal	All	Fatal
12:00 AM	1,180	49	110	7	108	4	98	7	130	1	154	6	291	13	289	11	490	18	690	31
1:00 AM	1,126	28	123	4	88	4	93	0	136	4	127	2	288	8	271	6	444	10	682	18
2:00 AM	1,278	26	102	3	97	1	111	1	134	4	153	3	343	10	338	4	495	9	783	17
3:00 AM	908	25	92	1	71	3	73	0	90	2	112	4	215	8	255	7	346	9	562	16
4:00 AM	954	19	107	2	97	5	117	2	135	3	128	0	185	5	185	2	477	10	477	9
5:00 AM	1,568	26	242	4	225	4	224	6	258	1	223	2	209	3	187	6	930	13	638	13
6:00 AM	3,175	18	467	5	571	2	614	2	544	1	516	2	240	4	223	2	2,712	12	463	6
7:00 AM	6,396	19	1,096	4	1,318	2	1,226	2	1,166	1	1,050	4	321	6	219	0	5,856	13	540	6
8:00 AM	5,780	16	939	0	1,147	0	1,072	4	1,024	1	910	4	428	3	260	4	5,092	9	688	7
9:00 AM	4,056	29	636	3	655	4	657	6	608	1	666	5	496	6	338	4	3,222	19	834	10
10:00 AM	4,336	20	625	3	631	2	636	4	592	2	750	0	660	6	442	3	3,234	11	1,102	9
11:00 AM	5,238	25	712	1	739	1	796	2	721	6	951	4	789	2	530	9	3,919	14	1,319	11
12:00 PM	6,184	36	844	3	900	4	912	7	959	2	1,017	5	898	6	654	9	4,632	21	1,552	15
1:00 PM	6,005	29	933	2	852	4	891	5	854	2	1,097	5	789	4	589	7	4,627	18	1,378	11
2:00 PM	6,973	31	1,002	4	1,024	5	1,086	5	1,055	4	1,344	4	825	7	637	2	5,511	22	1,462	9
3:00 PM	8,630	42	1,342	6	1,431	7	1,416	4	1,412	3	1,566	9	868	9	595	4	7,167	29	1,463	13
4:00 PM	9,063	40	1,408	4	1,494	5	1,470	4	1,496	6	1,701	4	828	8	666	9	7,569	23	1,494	17
5:00 PM	9,265	34	1,336	4	1,684	2	1,637	4	1,609	6	1,565	6	805	8	629	4	7,831	22	1,434	12
6:00 PM	6,980	56	903	11	1,075	7	1,142	8	1,168	10	1,239	10	845	4	608	6	4,288	36	2,692	20
7:00 PM	4,164	41	503	3	539	4	604	7	602	7	738	6	654	7	524	7	2,248	21	1,916	20
8:00 PM	3,448	43	381	8	436	7	503	8	485	4	639	3	548	8	456	5	1,805	27	1,643	16
9:00 PM	2,981	32	342	0	374	4	403	4	437	5	559	9	512	7	354	3	1,556	13	1,425	19
10:00 PM	2,242	30	221	4	260	4	286	3	291	3	473	1	433	7	278	8	1,058	14	1,184	16
11:00 PM	1,707	24	179	3	169	8	195	3	215	2	383	3	373	3	193	2	758	16	949	8
TOTAL	103,637	738	14,645	89	15,985	93	16,262	98	16,121	81	18,061	101	12,843	152	9,720	124	76,267	409	27,370	329

Crashes during Weekends accounted for 26.41% of all crashes and 44.58% of Fatal Crashes.

Crashes during Weekdays accounted for 73.59% of all crashes and 55.42% of Fatal Crashes.



Section 4: – Safety Devices

**Table 4 – 1
Child Safety Device Usage (less than five years old)**

Severity of Injury	Safety Device Used	Percent of Safety Device Used	Safety Device Not Used	Percent of Safety Device Not Used	Safety Device Use Unknown	Percent of Unknown
No Injury	9,793	89.30%	152	66.09%	235	57.46%
Unknown Injury	165	1.50%	5	2.17%	84	20.54%
Possible Injury	701	6.39%	25	10.87%	31	7.58%
Non-Incapacitating Injury	262	2.39%	33	14.35%	36	8.80%
Incapacitating Injury	44	0.40%	12	5.22%	15	3.67%
Fatal Injury	2	0.02%	3	1.30%	8	1.96%
TOTALS	10,967	100.00%	230	100.00%	409	100.00%

**Table 4 – 2
Driver Safety Device Usage**

Severity of Injury	Safety Device Used	Percent of Safety Device Used	Safety Device Not Used	Percent of Safety Device Not Used	Safety Device Use Unknown	Percent of Unknown
No Injury	138,087	81.74%	1,437	36.56%	10,776	45.35%
Unknown Injury	1,930	1.14%	85	2.16%	10,111	42.55%
Possible Injury	17,271	10.22%	613	15.60%	1,172	4.93%
Non-Incapacitating Injury	9,603	5.68%	999	25.42%	1,206	5.08%
Incapacitating Injury	1,857	1.10%	574	14.61%	434	1.83%
Fatal Injury	192	0.11%	222	5.65%	61	0.26%
TOTALS	168,940	100.00%	3,930	100.00%	23,760	100.00%

**Table 4 – 3
Passenger Safety Device Usage**

Severity of Injury	Safety Device Used	Percent of Safety Device Used	Safety Device Not Used	Percent of Safety Device Not Used	Safety Device Use Unknown	Percent of Unknown
No Injury	59,801	83.79%	2,068	55.01%	4,105	62.23%
Unknown Injury	942	1.32%	160	4.26%	1,397	21.18%
Possible Injury	6,653	9.32%	497	13.22%	499	7.57%
Non-Incapacitating Injury	3,337	4.68%	650	17.29%	381	5.78%
Incapacitating Injury	591	0.83%	289	7.69%	161	2.44%
Fatal Injury	49	0.07%	95	2.53%	53	0.80%
TOTALS	71,373	100.00%	3,759	100.00%	6,596	100.00%

Section 4: – Safety Devices

**Table 4 – 4
Driver Safety Device Usage by Gender**

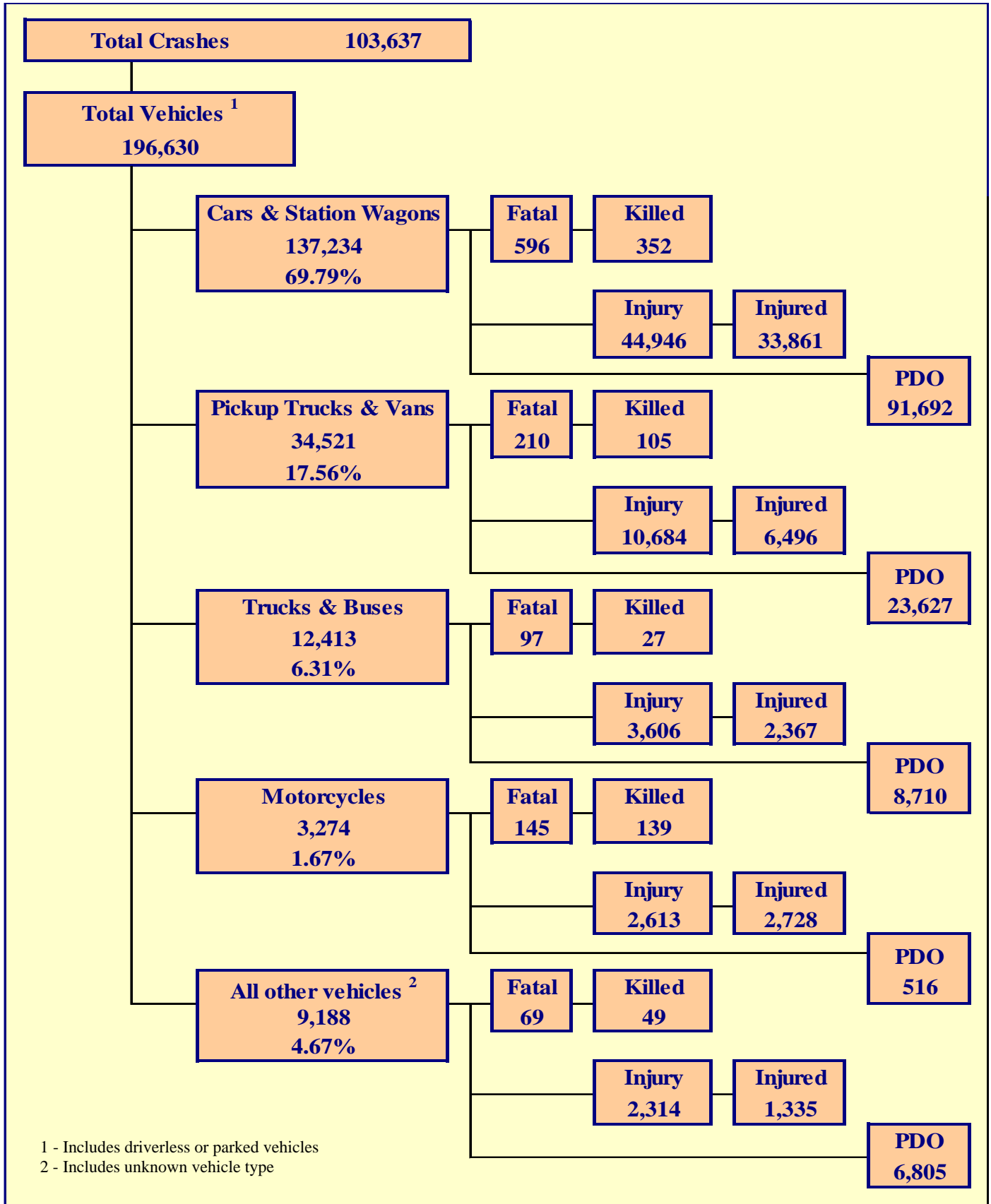
Gender of Driver	Number of Drivers						Total	Percent of Total
	Safety Device Used	Percent of Safety Device Used	Safety Device Not Used	Percent of Safety Device Not Used	Safety Device Use Unknown	Percent of Unknown		
Male	92,702	54.87%	2,778	70.69%	8,445	35.54%	103,925	52.85%
Female	76,110	45.05%	1,123	28.58%	4,213	17.73%	81,446	41.42%
Unknown	128	0.08%	29	0.74%	11,102	46.73%	11,259	5.73%
TOTAL	168,940	100.00%	3,930	100.00%	23,760	100.00%	196,630	100.00%

**Table 4 – 5
Driver Safety Device Usage by Age**

Driver Age Group	Number of Drivers						Total	Percent of Total
	Safety Device Used	Percent of Safety Device Used	Safety Device Not Used	Percent of Safety Device Not Used	Safety Device Use Unknown	Percent of Unknown		
15 & Under	220	0.13%	33	0.84%	30	0.13%	283	0.14%
16	2,269	1.34%	45	1.15%	133	0.56%	2,447	1.24%
17	3,455	2.05%	78	1.98%	229	0.96%	3,762	1.91%
18	4,843	2.87%	160	4.07%	314	1.32%	5,317	2.70%
19	4,997	2.96%	158	4.02%	333	1.40%	5,488	2.79%
20	5,072	3.00%	167	4.25%	400	1.68%	5,639	2.87%
21	5,004	2.96%	166	4.22%	385	1.62%	5,555	2.83%
22	4,939	2.92%	147	3.74%	378	1.59%	5,464	2.78%
23	4,304	2.55%	129	3.28%	370	1.56%	4,803	2.44%
24	4,224	2.50%	142	3.61%	295	1.24%	4,661	2.37%
25-34	36,388	21.54%	866	22.04%	2,534	10.66%	39,788	20.23%
35-44	30,102	17.82%	613	15.60%	1,884	7.93%	32,599	16.58%
45-54	26,671	15.79%	542	13.79%	1,603	6.75%	28,816	14.65%
55-64	19,087	11.30%	365	9.29%	1,087	4.57%	20,539	10.45%
65-74	10,313	6.10%	168	4.27%	608	2.56%	11,089	5.64%
75 & Older	5,868	3.47%	69	1.76%	306	1.29%	6,243	3.17%
Unknown	1,184	0.70%	82	2.09%	12,871	54.17%	14,137	7.19%
TOTAL	168,940	100.00%	3,930	100.00%	23,760	100.00%	196,630	100.00%

Section 5

Motor Vehicle and Driver Descriptions



Section 5: – Motor Vehicle and Driver Descriptions

Table 5 – 1

Arizona Motor Vehicle Registrations

Privately Owned Vehicles	4,360,345
Commercial Vehicles	434,553
Buses and Taxis	4,158
Motorcycles	170,160
Mopeds	404
TOTAL	4,969,620
Source: MVD - MV988 MV630419, Currently Registered Vehicles by County Listing, dated 12/31/2012.	

Table 5 – 2

Motor Vehicle Crash Involvement by Vehicle Type

Motor Vehicle Type	Number of Vehicles				
	Total	Percent of Total	In Fatal Crashes	In Injury Crashes	In PDO Crashes
Passenger Cars (Sedans, Convertibles, etc.)	97,767	49.721%	376	31,841	65,550
Station Wagons	39,467	20.072%	220	13,105	26,142
Pickup Trucks	32,563	16.561%	204	10,102	22,257
Vans	1,958	0.996%	6	582	1,370
Truck Tractor (with or without Semi-Trailer)	2,573	1.309%	48	572	1,953
Concrete Mixer Trucks	42	0.021%	0	10	32
Dump Trucks	179	0.091%	2	42	135
Garbage Trucks	124	0.063%	2	18	104
Tanker Trucks	29	0.015%	0	8	21
Wrecker or Tow Trucks	113	0.057%	0	27	86
Other Truck Combinations	8,120	4.130%	39	2,650	5,431
School Bus	201	0.102%	1	52	148
Commercial or Non-Commercial Bus	1,032	0.525%	5	227	800
Motorcycle (two or three wheel)	3,274	1.665%	145	2,613	516
All Terrain Vehicle or Cycle	141	0.072%	6	115	20
Moped	17	0.009%	2	14	1
Recreational Vehicle	81	0.041%	0	22	59
Motor Home or House Car	152	0.077%	3	23	126
Fire Trucks	50	0.025%	0	3	47
Ambulances	56	0.028%	1	12	43
Other Types Of Vehicles	124	0.063%	5	56	63
Vehicle Type Unknown	8,567	4.357%	52	2,069	6,446
TOTAL	196,630	100.00%	1,117	64,163	131,350

Section 5: – Motor Vehicle and Driver Descriptions

Table 5 – 3

Hit and Run Drivers Involved in Crashes

Hit and Run	Number of Crashes				Number of Persons	
	Total	Fatal	Injury	PDO	Killed	Injured
Yes	11,762	36	2,374	9,352	37	3,112
No	91,875	702	31,101	60,072	784	46,784
TOTAL	103,637	738	33,475	69,424	821	49,896

Table 5 – 4

Gender of Drivers Involved in Crashes

Gender of Driver	Number of Drivers							
	Total	Percent of Total	In Fatal Crashes	Percent of Fatal	In Injury Crashes	Percent of Injury	In PDO Crashes	Percent of PDO
Male	103,925	52.85%	770	68.93%	34,186	53.28%	68,969	52.51%
Female	81,446	41.42%	282	25.25%	28,134	43.85%	53,030	40.37%
Unknown	11,259	5.73%	65	5.82%	1,843	2.87%	9,351	7.12%
TOTAL	196,630	100.00%	1,117	100.00%	64,163	100.00%	131,350	100.00%

Table 5 – 5

License Status of Drivers Involved in Crashes

License Status of Driver	Number of Drivers							
	Total	Percent of Total	In Fatal Crashes	Percent of Fatal	In Injury Crashes	Percent of Injury	In PDO Crashes	Percent of PDO
Arizona License	156,036	79.36%	824	73.77%	52,911	82.46%	102,301	77.88%
All Others*	40,594	20.64%	293	26.23%	11,252	17.54%	29,049	22.12%
TOTAL	196,630	100.00%	1,117	100.00%	64,163	100.00%	131,350	100.00%

*Includes drivers that have a suspended, revoked, out-of-state or country license, as well as drivers with no license or unknown license type

Table 5 – 6

Passengers Killed and Injured by Age and Gender

Age of Passenger	Passengers Killed			Passengers Injured			Gender Unknown
	Total	Male	Female	Total	Male	Female	
0-4	6	5	1	863	451	412	0
5-9	8	5	3	1,120	542	578	0
10-14	18	12	6	1,196	507	689	0
15-19	32	18	14	2,003	801	1,202	0
20-24	22	16	6	1,573	662	911	0
25-34	37	22	15	1,671	689	982	0
35-44	19	14	5	1,166	393	773	0
45-54	18	6	12	1,106	325	781	0
55-64	15	7	8	914	236	678	0
65-74	7	2	5	592	123	469	0
75 & Older	15	5	10	437	118	319	0
Unknown	0	0	0	417	149	224	44
TOTAL	197	112	85	13,058	4,996	8,018	44

Section 5: – Motor Vehicle and Driver Descriptions

Table 5 – 7

Drivers and Passengers Killed and Injured by Vehicle Type

Motor Vehicle Type	Number of Drivers		Number of Passengers	
	Killed	Injured	Killed	Injured
Passenger Cars (Sedans, Convertibles, etc.)	147	17,741	65	6,542
Station Wagons	81	6,512	59	3,066
Pickup Trucks	72	4,375	32	1,756
Vans	1	227	0	138
Truck Tractor (with or without Semi-Trailer)	8	166	0	48
Concrete Mixer Trucks	0	1	0	1
Dump Trucks	0	14	0	1
Garbage Trucks	0	3	0	0
Tanker Trucks	0	2	0	0
Wrecker or Tow Trucks	0	5	0	0
Other Truck Combinations	7	1,171	12	669
School Bus	0	16	0	53
Commercial or Non-Commercial Bus	0	35	0	182
Motorcycle (two or three wheel)	129	2,544	10	184
All Terrain Vehicle or Cycle	4	105	2	44
Moped	2	14	0	0
Recreational Vehicle	0	9	0	2
Motor Home or House Car	2	4	3	10
Fire Trucks	0	0	0	0
Ambulances	0	7	0	8
Other Types Of Vehicles	2	40	2	17
Vehicle Type Unknown	20	738	12	337
TOTAL	475	33,729	197	13,058

Table 5 – 8

Drivers Killed and Injured by Age and Gender

Age of Driver	Drivers Killed				Drivers Injured			
	Total	Male	Female	Gender Unknown	Total	Male	Female	Gender Unknown
0-4	0	0	0	0	1	1	0	0
5-9	0	0	0	0	1	0	1	0
10-14	0	0	0	0	21	18	3	0
15-19	32	18	14	0	2,733	1,315	1,418	0
20-24	68	56	12	0	4,930	2,485	2,445	0
25-34	87	65	22	0	7,265	3,632	3,633	0
35-44	71	60	11	0	5,866	2,837	3,029	0
45-54	80	61	19	0	5,459	2,731	2,728	0
55-64	69	58	11	0	3,955	2,024	1,931	0
65-74	31	20	11	0	2,105	1,100	1,005	0
75 & Older	36	31	5	0	1,145	596	549	0
Unknown	1	0	0	1	248	143	54	51
TOTAL	475	369	105	1	33,729	16,882	16,796	51

Section 5: – Motor Vehicle and Driver Descriptions

**Table 5 – 9
Licensed Drivers in Arizona by Age**

Driver Age Group	Male Number	Percent of Male	Female Number	Percent of Female	Total Number	Percent of Total	Cumulative Percent
16	10,194	0.43%	9,975	0.42%	20,169	0.43%	0.43%
17	18,546	0.78%	17,372	0.74%	35,918	0.76%	1.18%
18	26,547	1.11%	24,316	1.03%	50,863	1.07%	2.26%
19	31,558	1.32%	29,106	1.24%	60,664	1.28%	3.54%
20	34,713	1.46%	32,381	1.38%	67,094	1.42%	4.96%
21	36,628	1.54%	35,105	1.49%	71,733	1.51%	6.47%
22	38,756	1.63%	37,417	1.59%	76,173	1.61%	8.08%
23	39,202	1.65%	37,930	1.61%	77,132	1.63%	9.71%
24	39,456	1.66%	39,064	1.66%	78,520	1.66%	11.36%
25-34	435,797	18.30%	429,847	18.26%	865,644	18.28%	29.64%
35-44	458,240	19.24%	429,606	18.25%	887,846	18.74%	48.38%
45-54	449,440	18.87%	436,335	18.53%	885,775	18.70%	67.09%
55-64	388,279	16.30%	404,351	17.17%	792,630	16.73%	83.82%
65-74	232,866	9.78%	243,703	10.35%	476,569	10.06%	93.88%
75 & older	141,695	5.95%	148,092	6.29%	289,787	6.12%	100.00%
TOTALS	2,381,917	100.00%	2,354,600	100.00%	4,736,517	100.00%	100.00%

Source: MVD - MV708 MV650653-1, Point-in-Time Driver Credential Report/All Driver Licenses by Age, Gender, & Class (page 19), dated 1/2/2013.

**Table 5 – 10
Driver Involvement by Age**

Driver Age Group	Number of Drivers							
	Total	Percent of Total	In Fatal Crashes	Percent of Fatal	In Injury Crashes	Percent of Injury	In PDO Crashes	Percent of PDO
15 & Under	283	0.14%	1	0.09%	111	0.17%	171	0.13%
16	2,447	1.24%	11	0.98%	773	1.20%	1,663	1.27%
17	3,762	1.91%	19	1.70%	1,133	1.77%	2,610	1.99%
18	5,317	2.70%	24	2.15%	1,751	2.73%	3,542	2.70%
19	5,488	2.79%	17	1.52%	1,835	2.86%	3,636	2.77%
20	5,639	2.87%	27	2.42%	1,952	3.04%	3,660	2.79%
21	5,555	2.83%	33	2.95%	1,873	2.92%	3,649	2.78%
22	5,464	2.78%	35	3.13%	1,872	2.92%	3,557	2.71%
23	4,803	2.44%	27	2.42%	1,666	2.60%	3,110	2.37%
24	4,661	2.37%	34	3.04%	1,595	2.49%	3,032	2.31%
25-34	39,788	20.23%	187	16.74%	13,328	20.77%	26,273	20.00%
35-44	32,599	16.58%	180	16.11%	10,882	16.96%	21,537	16.40%
45-54	28,816	14.65%	182	16.29%	9,811	15.29%	18,823	14.33%
55-64	20,539	10.45%	149	13.34%	7,012	10.93%	13,378	10.19%
65-74	11,089	5.64%	73	6.54%	3,842	5.99%	7,174	5.46%
75 & Older	6,243	3.17%	48	4.30%	2,112	3.29%	4,083	3.11%
Unknown	14,137	7.19%	70	6.27%	2,615	4.08%	11,452	8.72%
TOTAL	196,630	100.00%	1,117	100.00%	64,163	100.00%	131,350	100.00%

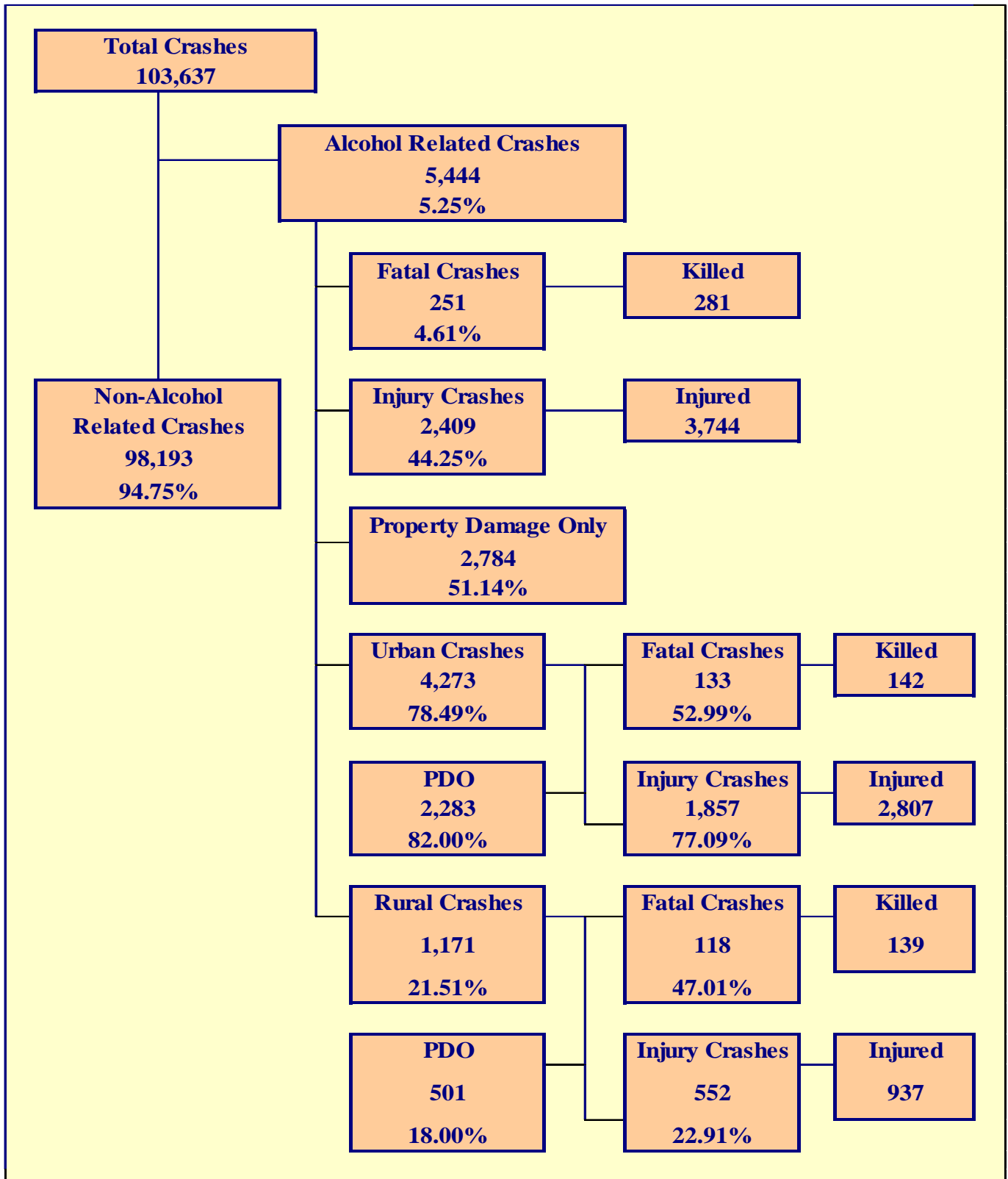
Section 5: – Motor Vehicle and Driver Descriptions

Table 5 – 11
Driver Violations

Type of Violation or Behavior	Number of Drivers							
	Total	Percent of Total	In Fatal Crashes	Percent of Fatal	In Injury Crashes	Percent of Injury	In PDO Crashes	Percent of PDO
No Improper Action	95,040	48.33%	430	38.50%	31,619	49.28%	62,991	47.96%
Speed too Fast for Conditions	32,971	16.77%	148	13.25%	11,234	17.51%	21,589	16.44%
Exceeded Lawful Speed	977	0.50%	44	3.94%	429	0.67%	504	0.38%
Failed to Yield Right-Of-Way	10,091	5.13%	55	4.92%	4,242	6.61%	5,794	4.41%
Followed Too Closely	4,807	2.44%	2	0.18%	1,262	1.97%	3,543	2.70%
Ran Stop Sign	1,094	0.56%	9	0.81%	473	0.74%	612	0.47%
Disregarded Traffic Signal	4,585	2.33%	30	2.69%	2,225	3.47%	2,330	1.77%
Made Improper Turn	5,777	2.94%	11	0.98%	1,787	2.79%	3,979	3.03%
Drove in Opposing Lane	1,234	0.63%	61	5.46%	500	0.78%	673	0.51%
Knowingly Operated with Faulty or Missing Equipment	226	0.11%	1	0.09%	65	0.10%	160	0.12%
Required Motorcycle Safety Equipment Not Used	28	0.01%	1	0.09%	19	0.03%	8	0.01%
Passed in No-Passing Zone	112	0.06%	3	0.27%	26	0.04%	83	0.06%
Unsafe Lane Change	5,704	2.90%	12	1.07%	913	1.42%	4,779	3.64%
Failed to Keep in Proper Lane	3,362	1.71%	55	4.92%	900	1.40%	2,407	1.83%
Disregarded Pavement Markings	190	0.10%	2	0.18%	53	0.08%	135	0.10%
Other Unsafe Passing	610	0.31%	6	0.54%	138	0.22%	466	0.35%
Inattention/Distraction	11,183	5.69%	28	2.51%	3,133	4.88%	8,022	6.11%
Electronic Communications Device	197	0.10%	2	0.18%	79	0.12%	116	0.09%
Other	6,242	3.17%	28	2.51%	1,972	3.07%	4,242	3.23%
Unknown	12,200	6.20%	189	16.92%	3,094	4.82%	8,917	6.79%
TOTAL	196,630	100.00%	1,117	100.00%	64,163	100.00%	131,350	100.00%

Table 5 – 12
Driver Physical Condition

Type of Condition	Number of Drivers							
	Total	Percent of Total	In Fatal Crashes	Percent of Fatal	In Injury Crashes	Percent of Injury	In PDO Crashes	Percent of PDO
No Apparent Influence	172,525	87.74%	586	52.46%	56,625	88.25%	115,314	87.79%
Had Been Drinking	5,216	2.65%	208	18.62%	2,236	3.48%	2,772	2.11%
Appeared to be Under the Influence of Drugs*	737	0.37%	41	3.67%	323	0.50%	373	0.28%
Medications	297	0.15%	5	0.45%	147	0.23%	145	0.11%
Illness	770	0.39%	3	0.27%	430	0.67%	337	0.26%
Physical Impairment	210	0.11%	0	0.00%	103	0.16%	107	0.08%
Fell Asleep or Fatigued	1,314	0.67%	18	1.61%	555	0.86%	741	0.56%
Other	1,082	0.55%	19	1.70%	309	0.48%	754	0.57%
Unknown	14,479	7.36%	237	21.22%	3,435	5.35%	10,807	8.23%
TOTAL	196,630	100.00%	1,117	100.00%	64,163	100.00%	131,350	100.00%
*Illegal drugs or narcotics								



Section 6: – Alcohol Related Crashes

The statistics in the Alcohol Related section represent those crashes where the investigating officer indicated that a driver, pedestrian, or pedalcyclist had been drinking an alcoholic beverage and may or may not be substantiated by a blood or breath test. No assumption is to be made that the person was legally intoxicated (blood alcohol content of 0.08% or higher) at the time of the crash.

**Table 6 – 1
Economic Loss Due to Alcohol Related Crashes in Arizona for 2012**

Fatalities	\$407,000,400
Incapacitating Injuries	\$48,107,790
Non-Incapacitating Injuries	\$35,471,928
Possible Injuries	\$20,145,408
Property Damage Only	\$25,841,088
TOTAL	\$536,566,614

Refer to note on Page 4 for Economic Loss Estimates

**Table 6 – 2
Alcohol Related Crash History**

Year	Alcohol Related Crashes	Percent of all Crashes	Persons Killed	Percent of all Fatalities	Persons Injured	Percent of all Injuries
2008	6,878	5.71%	355	37.85%	4,834	8.55%
2009	5,900	5.51%	270	33.50%	4,179	8.23%
2010	5,572	5.22%	255	33.60%	3,788	7.51%
2011	5,584	5.38%	287	34.70%	3,683	7.41%
2012	5,444	5.25%	281	34.23%	3,744	7.50%

**Table 6 – 3
Manner of Collision in Alcohol Related Crashes**

Manner of Collision Type	Number of Crashes							
	Total	Percent of All Crashes	Fatal	Percent of Fatal Crashes	Injury	Percent of Injury Crashes	PDO	Percent of PDO Crashes
Angle	521	17.22%	15	11.28%	294	20.70%	212	14.40%
Left Turn	312	10.31%	7	5.26%	198	13.94%	107	7.27%
Rear End	1,229	40.63%	21	15.79%	534	37.61%	674	45.79%
Head-On	198	6.55%	15	11.28%	102	7.18%	81	5.50%
Sideswipe (same)	310	10.25%	5	3.76%	81	5.70%	224	15.22%
Sideswipe (opposite)	103	3.40%	1	0.75%	36	2.54%	66	4.48%
Rear to Side	20	0.66%	0	0.00%	4	0.28%	16	1.09%
Rear to Rear	17	0.56%	0	0.00%	0	0.00%	17	1.15%
Other	286	9.45%	68	51.13%	154	10.85%	64	4.35%
Unknown	29	0.96%	1	0.75%	17	1.20%	11	0.75%
TOTAL	3,025	100.00%	133	100.00%	1,420	100.00%	1,472	100.00%

Note: Includes only multi-vehicle alcohol related crashes

Section 6: – Alcohol Related Crashes

Table 6 – 4

Alcohol Related Crashes by First Harmful Event

First Harmful Event Type	Number of Crashes				Number of Persons	
	Total	Fatal	Injury	PDO	Killed	Injured
Collision with Motor Vehicle in Transport	1,965	63	901	1,001	73	1,747
Overturning	277	48	185	44	52	285
Collision with Pedestrian	180	51	116	13	52	132
Collision with Pedalcyclist	64	6	52	6	6	55
Collision with Animal	10	1	3	6	1	3
Collision with Fixed Object	1,824	74	672	1,078	89	848
Collision with Non-fixed Object*	301	3	74	224	3	89
Vehicle Fire or Explosion	3	1	1	1	1	1
Other Non-collision**	50	1	28	21	1	30
Unknown	770	3	377	390	3	554
TOTAL	5,444	251	2,409	2,784	281	3,744

*Includes Collision with Parked Vehicles, Trains, Railway Vehicles, and Work Zone Equipment

**Includes Vehicle Immersion, Jackknife, and Cargo Loss or Shift

Table 6 – 5

Alcohol Related Crashes by Vehicle Type

Motor Vehicle Type	Number of Vehicles				
	Total	Percent of Total	In Fatal Crashes	In Injury Crashes	In PDO Crashes
Passenger Cars (Sedans, Convertibles, etc.)	2,751	52.742%	80	1,093	1,578
Station Wagons	916	17.561%	30	383	503
Pickup Trucks	1,041	19.958%	50	474	517
Vans	31	0.594%	1	13	17
Truck Tractor (with or without Semi-Trailer)	5	0.096%	0	4	1
Concrete Mixer Trucks	0	0.000%	0	0	0
Dump Trucks	0	0.000%	0	0	0
Garbage Trucks	0	0.000%	0	0	0
Tanker Trucks	0	0.000%	0	0	0
Wrecker or Tow Trucks	0	0.000%	0	0	0
Other Truck Combinations	153	2.933%	3	60	90
School Bus	1	0.019%	0	1	0
Commercial or Non-Commercial Bus	1	0.019%	0	1	0
Motorcycle (two or three wheel)	186	3.566%	35	142	9
All Terrain Vehicle or Cycle	25	0.479%	5	19	1
Moped	0	0.000%	0	0	0
Recreational Vehicle	4	0.077%	0	1	3
Motor Home or House Car	1	0.019%	0	0	1
Fire Trucks	0	0.000%	0	0	0
Ambulances	0	0.000%	0	0	0
Other Types Of Vehicles	1	0.019%	0	0	1
Vehicle Type Unknown	100	1.917%	4	45	51
TOTAL	5,216	100.00%	208	2,236	2,772

Section 6: – Alcohol Related Crashes

Table 6 – 6
Lighting Conditions in Alcohol Related Crashes

Type of Lighting Conditions	Number of Crashes				Number of Persons	
	Total	Fatal	Injury	PDO	Killed	Injured
Daylight	1,526	58	709	759	66	1,145
Dawn	82	4	42	36	4	66
Dusk	145	8	74	63	8	115
Dark - Lighted	2,777	85	1,194	1,498	92	1,814
Dark - Not Lighted	854	78	371	405	93	571
Dark - Unknown Lighting	60	18	19	23	18	33
TOTAL	5,444	251	2,409	2,784	281	3,744

Table 6 – 7
Road Surface Conditions in Alcohol Related Crashes

Type of Road Surface Condition	Number of Drivers				Number of Persons	
	Total	In Fatal Crashes	In Injury Crashes	In PDO Crashes	Killed	Injured
Dry	4,932	179	2,135	2,618	243	3,533
Wet	165	4	65	96	4	121
Snow	8	0	1	7	0	1
Slush	0	0	0	0	0	0
Ice/Frost	3	0	2	1	0	7
Water (standing or moving)	0	0	0	0	0	0
Sand	5	1	1	3	1	1
Mud, Dirt, Gravel	56	8	25	23	10	52
Oil	0	0	0	0	0	0
Other	4	0	2	2	0	2
Unknown	43	16	5	22	23	27
TOTAL	5,216	208	2,236	2,772	281	3,744

Table 6 – 8
Gender of Drivers Involved in Alcohol Related Crashes

Gender of Driver	Number of Drivers							
	Total	Percent of Total	In Fatal Crashes	Percent of Fatal	In Injury Crashes	Percent of Injury	In PDO Crashes	Percent of PDO
Male	3,822	73.27%	174	83.65%	1,641	73.39%	2,007	72.40%
Female	1,354	25.96%	34	16.35%	585	26.16%	735	26.52%
Unknown	40	0.77%	0	0.00%	10	0.45%	30	1.08%
TOTAL	5,216	100.00%	208	100.00%	2,236	100.00%	2,772	100.00%

In total crashes across the state, 52.85% of the drivers were males. When alcohol was involved, males accounted for 73.27% of the drivers.

Section 6: – Alcohol Related Crashes

Table 6 – 9

Driver Involvement by Age in Alcohol Related Crashes

Driver Age Group	Number of Drivers							
	Total	Percent of Total	In Fatal Crashes	Percent of Fatal	In Injury Crashes	Percent of Injury	In PDO Crashes	Percent of PDO
15 & Under	5	0.10%	0	0.00%	4	0.18%	1	0.04%
16	16	0.31%	4	1.92%	5	0.22%	7	0.25%
17	33	0.63%	3	1.44%	17	0.76%	13	0.47%
18	109	2.09%	3	1.44%	42	1.88%	64	2.31%
19	146	2.80%	5	2.40%	55	2.46%	86	3.10%
20	192	3.68%	9	4.33%	79	3.53%	104	3.75%
21	267	5.12%	12	5.77%	111	4.96%	144	5.19%
22	250	4.79%	10	4.81%	104	4.65%	136	4.91%
23	234	4.49%	8	3.85%	112	5.01%	114	4.11%
24	235	4.51%	13	6.25%	101	4.52%	121	4.37%
25-34	1,477	28.32%	53	25.48%	626	28.00%	798	28.79%
35-44	887	17.01%	36	17.31%	375	16.77%	476	17.17%
45-54	715	13.71%	29	13.94%	304	13.60%	382	13.78%
55-64	414	7.94%	14	6.73%	201	8.99%	199	7.18%
65-74	123	2.36%	8	3.85%	57	2.55%	58	2.09%
75 & Older	31	0.59%	1	0.48%	17	0.76%	13	0.47%
Unknown	82	1.57%	0	0.00%	26	1.16%	56	2.02%
TOTAL	5,216	100.00%	208	100.00%	2,236	100.00%	2,772	100.00%

Table 6 – 10

When Alcohol Related Crashes Occurred in 2012

Time of Day	Total	Weekday	Weekend*
Daytime**	1,469	884	585
Nighttime	3,975	1,571	2,404
Total	5,444	2,455	2,989
*Weekend begins at 6:00 p.m. on Friday and continues through 6:00 a.m. Monday. All other times and days are considered Weekdays.			
**Daytime refers to the hours between 6:00 a.m. and 6:00 p.m.			

Table 6 – 11

Safety Device Usage for Drinking Drivers

Severity of Injury	Safety Device Not Used	Lap Belt	Lap & Shoulder Belt	Protective Helmet	Other	Unknown	Totals
No Injury	178	26	1,961	4	14	987	3,170
Unknown Injury	11	2	45	0	3	182	243
Possible Injury	84	8	311	5	2	171	581
Non-Incapacitating Injury	178	6	336	15	0	220	755
Incapacitating Injury	127	2	82	10	2	100	323
Fatal Injury	96	0	21	9	0	18	144
TOTALS	674	44	2,756	43	21	1,678	5,216

Section 6: – Alcohol Related Crashes

Table 6 – 12
Persons Killed and Injured in Alcohol Related Crashes

Age of Victim	Persons Killed			Persons Injured			
	Total	Male	Female	Total	Male	Female	Gender Unknown
0-4	0	0	0	51	28	23	0
5-9	4	2	2	56	26	30	0
10-14	2	0	2	67	22	45	0
15-19	24	16	8	329	177	152	0
20-24	47	37	10	758	484	274	0
25-34	70	51	19	903	591	312	0
35-44	40	35	5	572	351	221	0
45-54	48	35	13	482	300	182	0
55-64	33	26	7	299	189	110	0
65-74	9	7	2	122	71	51	0
75 & Older	4	3	1	40	18	22	0
Unknown	0	0	0	65	41	16	8
TOTAL	281	212	69	3,744	2,298	1,438	8

Table 6 – 13
Alcohol Related Crashes by County

County	Number of Crashes				Number of Persons	
	Total	Fatal	Injury	PDO	Killed	Injured
Apache	46	14	24	8	19	63
Cochise	81	4	34	43	4	46
Coconino	170	18	72	80	22	102
Gila	45	4	22	19	6	36
Graham	30	1	11	18	1	16
Greenlee	6	2	3	1	2	9
La Paz	15	2	9	4	2	14
Maricopa	3,366	104	1,487	1,775	112	2,245
Mohave	194	10	90	94	15	132
Navajo	99	11	43	45	13	77
Pima	836	49	362	425	51	590
Pinal	188	17	82	89	18	137
Santa Cruz	30	3	9	18	3	13
Yavapai	173	8	79	86	9	121
Yuma	165	4	82	79	4	119
TOTAL	5,444	251	2,409	2,784	281	3,720

Section 6: – Alcohol Related Crashes

Chart 6 – 1

All Alcohol Related Crashes vs. Fatal Alcohol Related Crashes by Day of Week

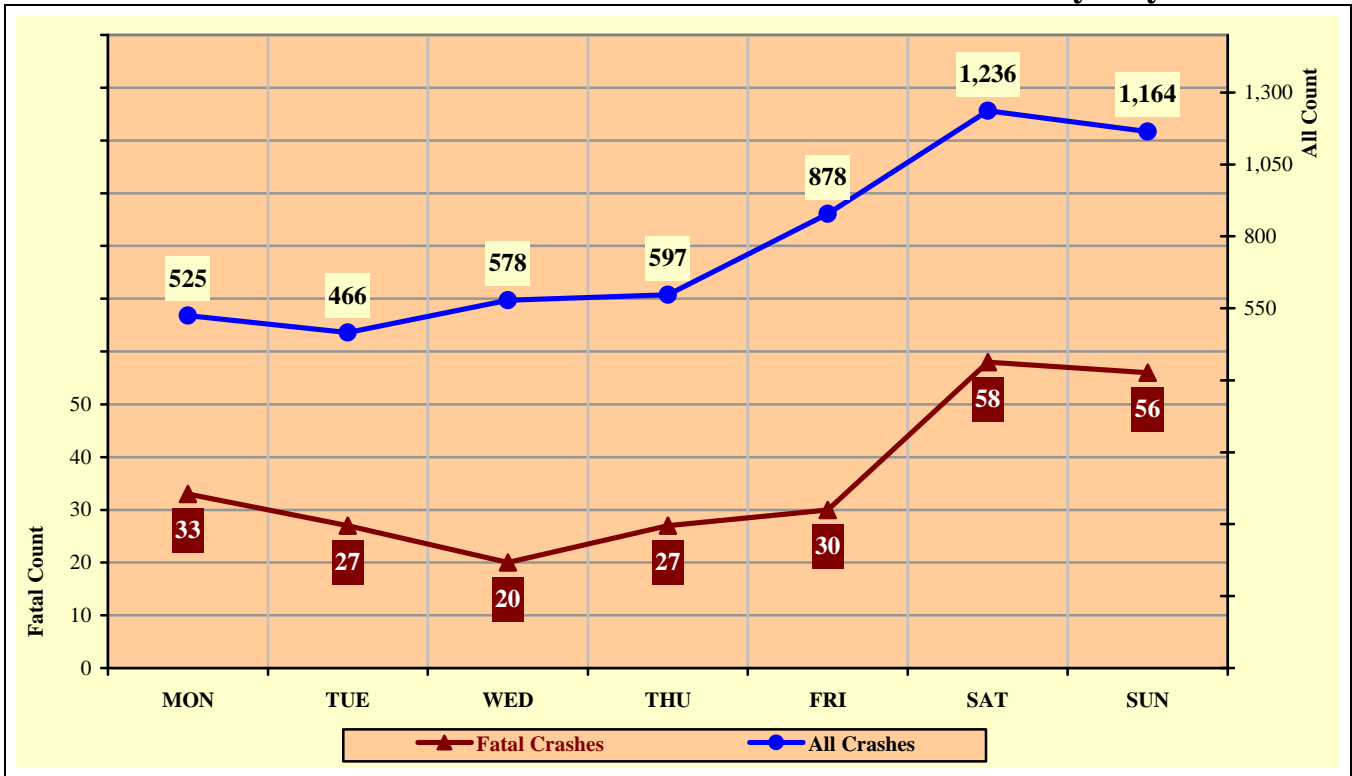
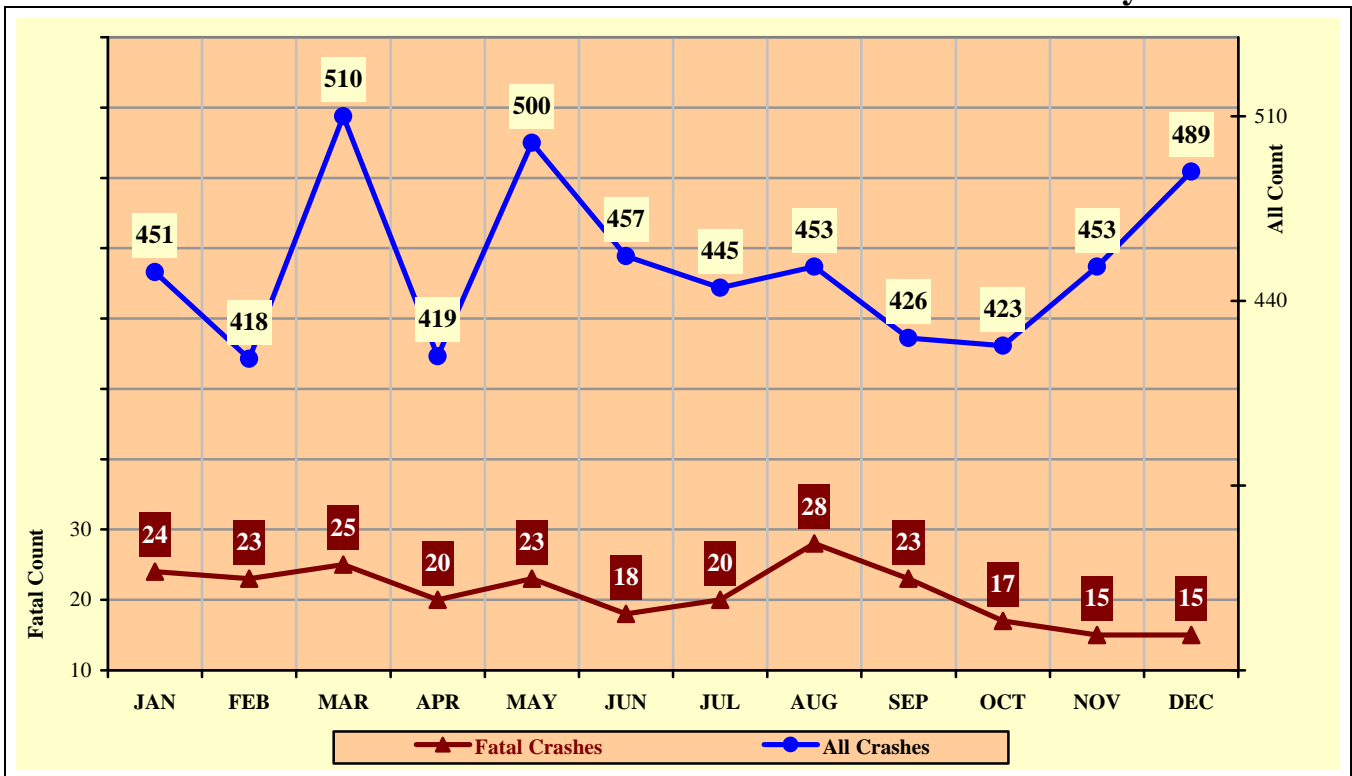


Chart 6 – 2

All Alcohol Related Crashes vs. Fatal Alcohol Related Crashes by Month



Section 6: – Alcohol Related Crashes

Chart 6 – 3

All Alcohol Related Crashes vs. Fatal Alcohol Related Crashes - Weekdays

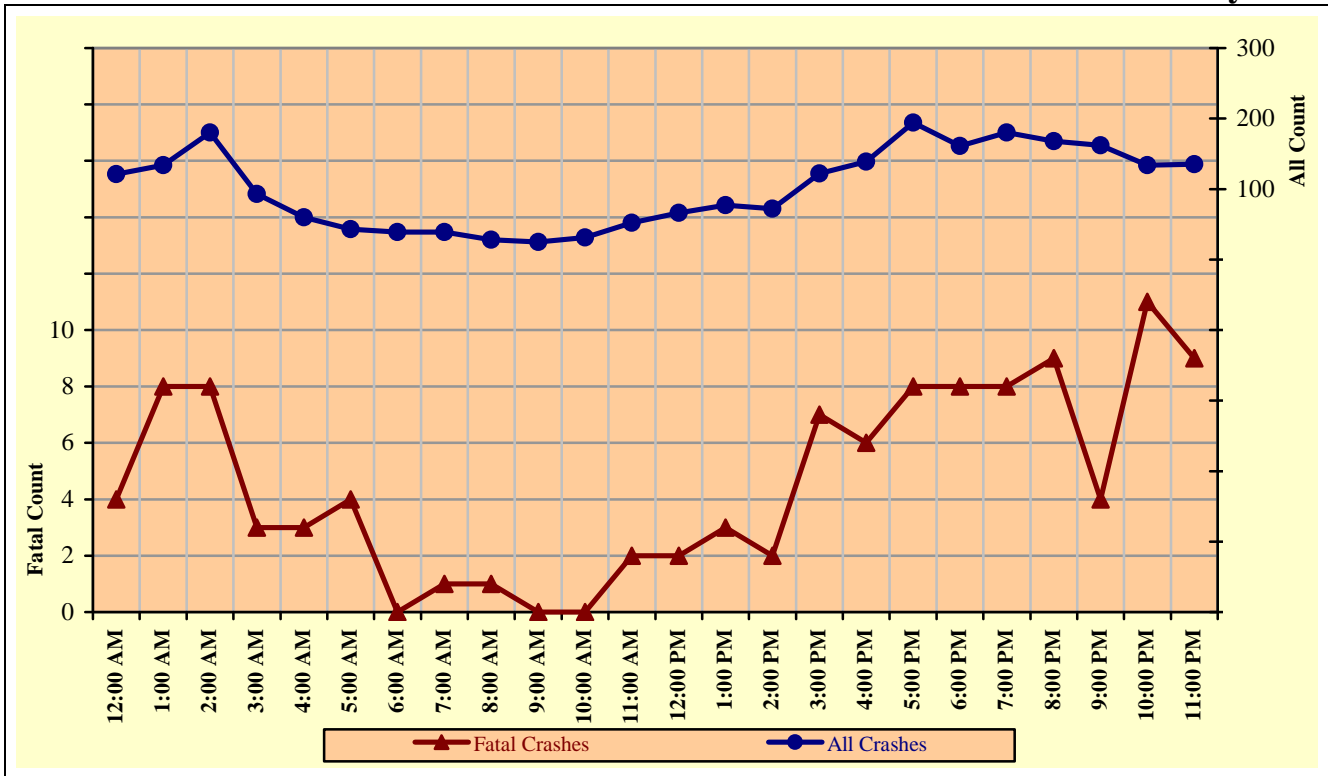
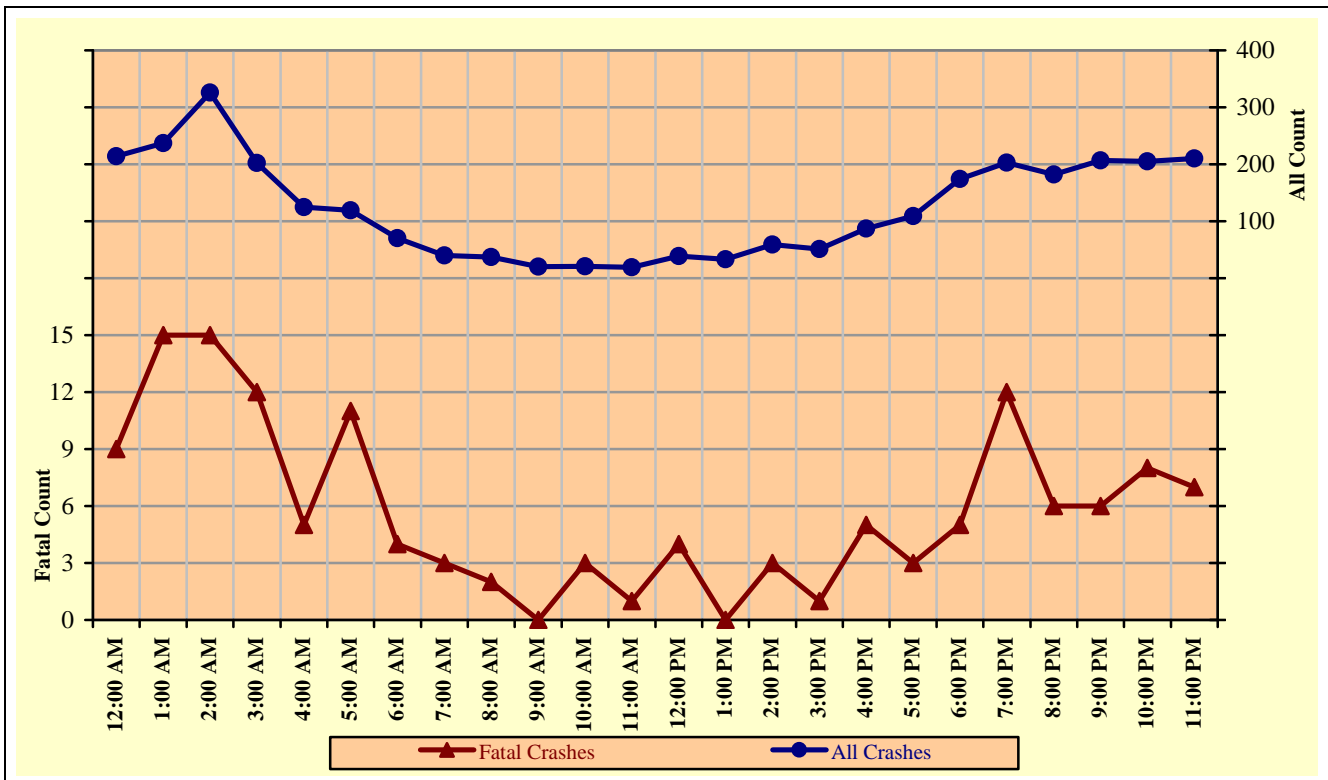


Chart 6 – 4

All Alcohol Related Crashes vs. Fatal Alcohol Related Crashes - Weekends



Section 6: – Alcohol Related Crashes

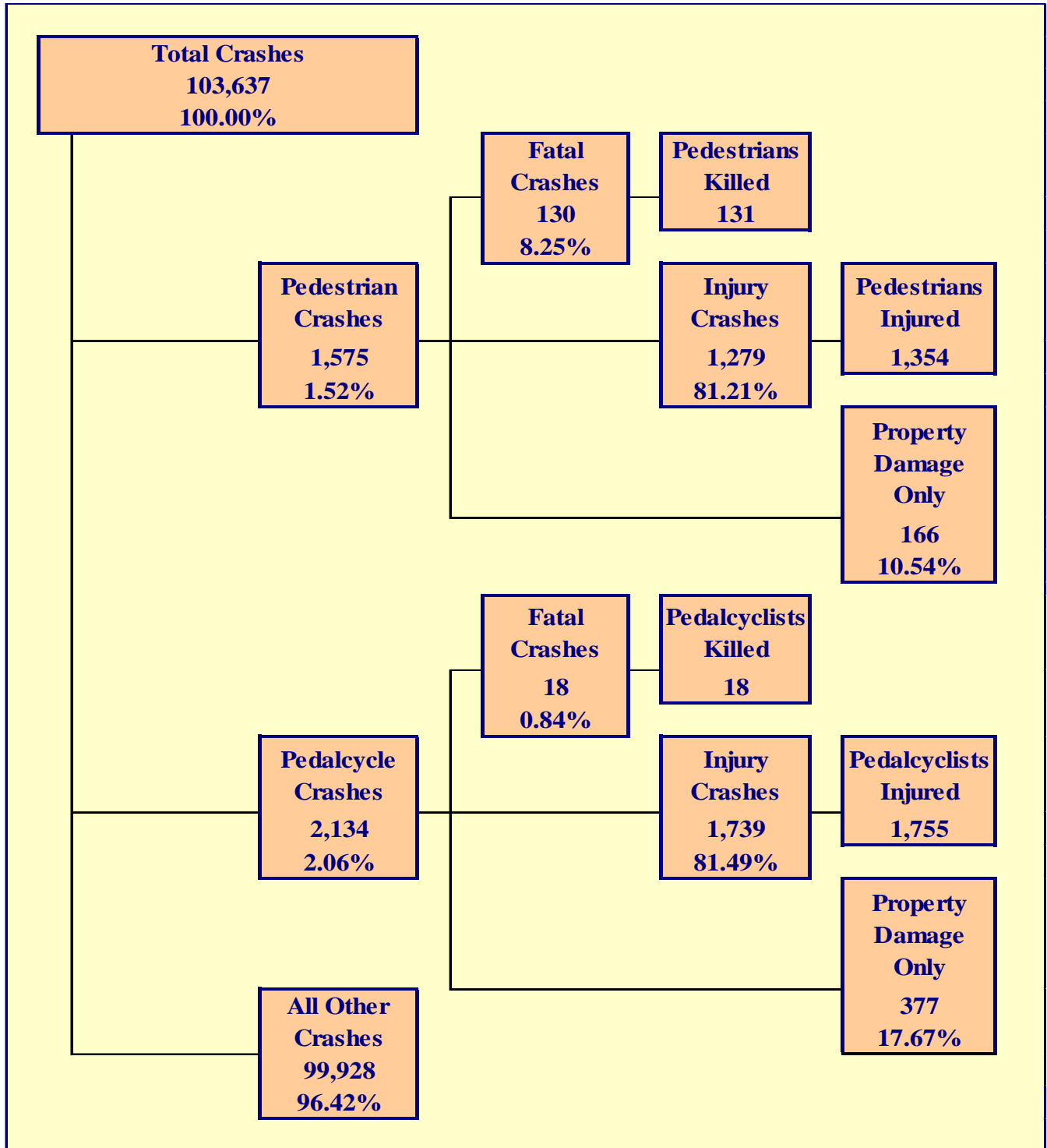
Table 6 – 14

Alcohol Related Crashes by Hour and Day of Week

Hour Beginning	Total Crashes		Monday		Tuesday		Wednesday		Thursday		Friday		Saturday		Sunday		Weekdays		Weekends	
	All	Fatal	All	Fatal	All	Fatal	All	Fatal	All	Fatal	All	Fatal	All	Fatal	All	Fatal	All	Fatal	All	Fatal
12:00 AM	335	13	33	2	24	2	21	0	35	0	41	2	73	2	108	5	121	4	214	9
1:00 AM	371	23	40	3	23	2	25	0	44	4	42	2	99	7	98	5	134	8	237	15
2:00 AM	506	23	38	3	29	1	38	1	43	3	70	3	148	9	140	3	180	8	326	15
3:00 AM	295	15	20	1	12	1	19	0	25	0	37	2	80	4	102	7	93	3	202	12
4:00 AM	185	8	9	1	13	0	14	1	19	2	14	0	55	2	61	2	60	3	125	5
5:00 AM	162	15	17	2	4	0	15	3	13	0	11	1	46	3	56	6	43	4	119	11
6:00 AM	109	4	4	0	7	0	12	0	6	0	10	0	38	3	32	1	39	0	70	4
7:00 AM	79	4	9	1	7	0	5	0	5	0	13	0	23	3	17	0	39	1	40	3
8:00 AM	65	3	9	0	3	0	5	0	5	1	6	0	20	0	17	2	28	1	37	2
9:00 AM	45	0	6	0	3	0	3	0	3	0	10	0	11	0	9	0	25	0	20	0
10:00 AM	52	3	7	0	5	0	7	0	3	0	9	0	9	2	12	1	31	0	21	3
11:00 AM	71	3	8	0	12	0	9	1	5	0	18	1	10	0	9	1	52	2	19	1
12:00 PM	105	6	9	1	11	1	16	0	11	0	19	0	14	1	25	3	66	2	39	4
1:00 PM	110	3	14	0	21	2	15	1	15	0	12	0	17	0	16	0	77	3	33	0
2:00 PM	131	5	14	1	15	0	16	0	14	1	13	0	30	2	29	1	72	2	59	3
3:00 PM	173	8	28	2	19	1	23	1	22	0	30	3	23	1	28	0	122	7	51	1
4:00 PM	226	11	24	2	25	0	23	1	23	2	44	1	40	2	47	3	139	6	87	5
5:00 PM	303	11	41	2	35	2	33	1	38	2	47	1	54	0	55	3	194	8	109	3
6:00 PM	335	13	43	2	22	1	54	1	42	4	59	2	61	1	54	2	161	8	174	5
7:00 PM	383	20	42	1	38	2	44	2	56	3	61	5	78	4	64	3	180	8	203	12
8:00 PM	350	15	21	3	47	4	45	1	55	1	75	2	56	3	51	1	168	9	182	6
9:00 PM	369	10	27	0	28	1	59	1	48	2	78	3	82	2	47	1	162	4	207	6
10:00 PM	339	19	29	4	33	3	39	3	33	1	71	0	85	4	49	4	134	11	205	8
11:00 PM	345	16	33	2	30	4	38	2	34	1	88	2	84	3	38	2	135	9	210	7
TOTAL	5,444	251	525	33	466	27	578	20	597	27	878	30	1,236	58	1,164	56	2,455	111	2,989	140

Crashes during Weekends accounted for 54.90% of all Alcohol Related crashes and 55.78% of Alcohol Related Fatal Crashes.

Crashes during Weekdays accounted for 45.10% of all Alcohol Related crashes and 44.22% of Alcohol Related Fatal Crashes.



Section 7: – Pedestrian and Pedalcyclist Crashes

Table 7 – 1

Pedestrians Killed and Injured By Age and Gender

Age Group	Pedestrians Killed			Pedestrians Injured			
	Total	Male	Female	Total	Male	Female	Gender Unknown
0-4	4	2	2	45	27	18	0
5-9	5	4	1	55	36	19	0
10-14	1	1	0	110	67	43	0
15-19	9	4	5	214	132	82	0
20-24	10	8	2	145	88	57	0
25-34	23	17	6	191	123	68	0
35-44	14	10	4	146	87	59	0
45-54	19	17	2	192	135	57	0
55-64	23	13	10	137	87	50	0
65-74	10	8	2	51	28	23	0
75 & Older	13	7	6	35	22	13	0
Unknown	0	0	0	33	21	9	3
TOTAL	131	91	40	1,354	853	498	3

Table 7 – 2

Pedestrian Crashes by Geographic Location

Category	Total	Urban	Percent of Total	Rural	Percent of Total
Total Crashes	1,575	1,399	88.83%	176	11.17%
Fatal Crashes	130	97	74.62%	33	25.38%
Injury Crashes	1,279	1,157	90.46%	122	9.54%
PDO Crashes	166	145	87.35%	21	12.65%
Pedestrians Killed	131	97	74.05%	34	25.95%
Pedestrians Injured	1,354	1,224	90.40%	130	9.60%

Table 7 – 3

Pedestrian Crash History

Year	Pedestrian Crashes	Percent of all Crashes	Pedestrians Killed	Percent of all Fatalities	Pedestrians Injured	Percent of all Injuries
2008	1,581	1.31%	125	13.33%	1,432	2.53%
2009	1,529	1.43%	122	15.14%	1,312	2.58%
2010	1,462	1.37%	154	20.29%	1,250	2.48%
2011	1,511	1.46%	154	18.62%	1,257	2.53%
2012	1,575	1.52%	131	15.96%	1,354	2.71%

Section 7: – Pedestrian and Pedalcyclist Crashes

Table 7 – 4
Pedestrians Killed by Age and Action

Pedestrian Action	Total	Age Group of Pedestrian											
		0-4	5-9	10-14	15-19	20-24	25-34	35-44	45-54	55-64	65-74	75 & Older	Unknown
Crossing Road	74	1	1	1	5	2	7	6	13	19	8	11	0
Walking With Traffic	6	0	0	0	1	2	1	1	1	0	0	0	0
Walking Against Traffic	6	0	0	0	0	0	2	2	1	1	0	0	0
Standing	4	0	0	0	1	1	0	1	0	1	0	0	0
Lying	5	0	0	0	0	0	2	0	2	1	0	0	0
Getting on/off Vehicle	1	0	0	0	0	0	0	0	0	1	0	0	0
Working on/pushing Veh	2	0	0	0	0	0	1	0	0	0	0	1	0
Working on Road	0	0	0	0	0	0	0	0	0	0	0	0	0
Other	13	3	2	0	1	0	6	0	1	0	0	0	0
Unknown	20	0	2	0	1	5	4	4	1	0	2	1	0
TOTAL	131	4	5	1	9	10	23	14	19	23	10	13	0

Table 7 – 5
Pedestrians Injured by Age and Action

Pedestrian Action	Total	Age Group of Pedestrian											
		0-4	5-9	10-14	15-19	20-24	25-34	35-44	45-54	55-64	65-74	75 & Older	Unknown
Crossing Road	696	19	36	61	119	79	97	70	87	75	19	21	13
Walking With Traffic	79	2	0	4	10	4	15	9	21	4	7	3	0
Walking Against Traffic	81	2	1	10	10	13	12	13	11	7	1	0	1
Standing	63	0	0	1	5	9	13	9	14	7	2	0	3
Lying	6	0	0	0	1	1	2	1	0	1	0	0	0
Getting on/off Vehicle	9	1	0	0	1	1	0	1	2	0	3	0	0
Working on/pushing Veh	7	0	0	0	0	1	2	1	2	0	0	0	1
Working on Road	3	0	0	0	0	0	0	1	0	0	1	0	1
Other	319	13	17	25	58	29	34	35	42	33	16	10	7
Unknown	91	8	1	9	10	8	16	6	13	10	2	1	7
TOTAL	1,354	45	55	110	214	145	191	146	192	137	51	35	33

Table 7 – 6
Pedestrian Physical Condition in Motor Vehicle Crashes

Type of Condition	Number of Pedestrians							
	Total	Percent of Total	In Fatal Crashes	Percent of Fatal	In Injury Crashes	Percent of Injury	In PDO Crashes	Percent of PDO
No Apparent Influence	1,169	69.42%	34	24.11%	1,014	74.01%	121	69.94%
Had Been Drinking	203	12.05%	50	35.46%	141	10.29%	12	6.94%
Appeared to be Under the Influence of Drugs*	18	1.07%	12	8.51%	5	0.36%	1	0.58%
Medications	6	0.36%	2	1.42%	4	0.29%	0	0.00%
Illness	2	0.12%	0	0.00%	2	0.15%	0	0.00%
Physical Impairment	5	0.30%	0	0.00%	5	0.36%	0	0.00%
Fell Asleep or Fatigued	0	0.00%	0	0.00%	0	0.00%	0	0.00%
Other	19	1.13%	0	0.00%	18	1.31%	1	0.58%
Unknown	262	15.56%	43	30.50%	181	13.21%	38	21.97%
TOTAL	1,684	100.00%	141	100.00%	1,370	100.00%	173	100.00%

*Illegal drugs or narcotics

Section 7: – Pedestrian and Pedalcyclist Crashes

Table 7 – 7

Lighting Conditions in Pedestrian Crashes

Type of Lighting Conditions	Number of Crashes			
	Total	Fatal	Injury	PDO
Daylight	827	24	701	102
Dawn	31	1	24	6
Dusk	74	4	61	9
Dark - Lighted	433	50	347	36
Dark - Not Lighted	179	36	132	11
Dark - Unknown Lighting	31	15	14	2
TOTAL	1,575	130	1,279	166

Table 7 – 8

Weather Conditions in Pedestrian Crashes

Type of Weather Conditions	Number of Crashes			
	Total	Fatal	Injury	PDO
Clear	1,417	100	1,167	150
Cloudy	100	10	79	11
Sleet/Hail	2	0	2	0
Rain	25	2	20	3
Snow	2	0	2	0
Severe Crosswinds	0	0	0	0
Blowing Sand, Soil, Dirt	1	0	0	1
Fog, Smog, Smoke	0	0	0	0
Blowing Snow	0	0	0	0
Other	1	1	0	0
Unknown	27	17	9	1
TOTAL	1,575	130	1,279	166

Table 7 – 9

Pedalcyclists Killed and Injured by Age and Gender

Age Group	Pedalcyclists Killed			Pedalcyclists Injured			
	Total	Male	Female	Total	Male	Female	Gender Unknown
0-4	0	0	0	8	5	3	0
5-9	0	0	0	44	35	9	0
10-14	2	1	1	167	130	37	0
15-19	1	1	0	257	188	69	0
20-24	1	0	1	253	176	77	0
25-34	2	2	0	318	229	89	0
35-44	2	2	0	205	157	48	0
45-54	4	4	0	254	201	53	0
55-64	3	3	0	139	116	23	0
65-74	3	3	0	62	55	7	0
75 & Older	0	0	0	20	18	2	0
Unknown	0	0	0	28	14	3	11
TOTAL	18	16	2	1,755	1,324	420	11

Section 7: – Pedestrian and Pedalcyclist Crashes

Table 7 – 10

Pedalcycle Crashes by Geographic Location

Category	Total	Urban	Percent of Total	Rural	Percent of Total
Total Crashes	2,134	1,982	92.88%	152	7.12%
Fatal Crashes	18	15	83.33%	3	16.67%
Injury Crashes	1,739	1,618	93.04%	121	6.96%
PDO Crashes	377	349	92.57%	28	7.43%
Pedalcyclists Killed	18	15	83.33%	3	16.67%
Pedalcyclists Injured	1,755	1,622	92.42%	133	7.58%

Table 7 – 11

Pedalcycle Crash History

Year	Pedalcycle Crashes	Percent of all Crashes	Pedalcyclists Killed	Percent of all Fatalities	Pedalcyclists Injured	Percent of all Injuries
2008	2,006	1.66%	19	2.03%	1,697	3.00%
2009	2,002	1.87%	25	3.10%	1,650	3.25%
2010	1,929	1.81%	19	2.50%	1,596	3.17%
2011	1,921	1.85%	23	2.78%	1,614	3.25%
2012	2,134	2.06%	18	2.19%	1,755	3.52%

Table 7 – 12

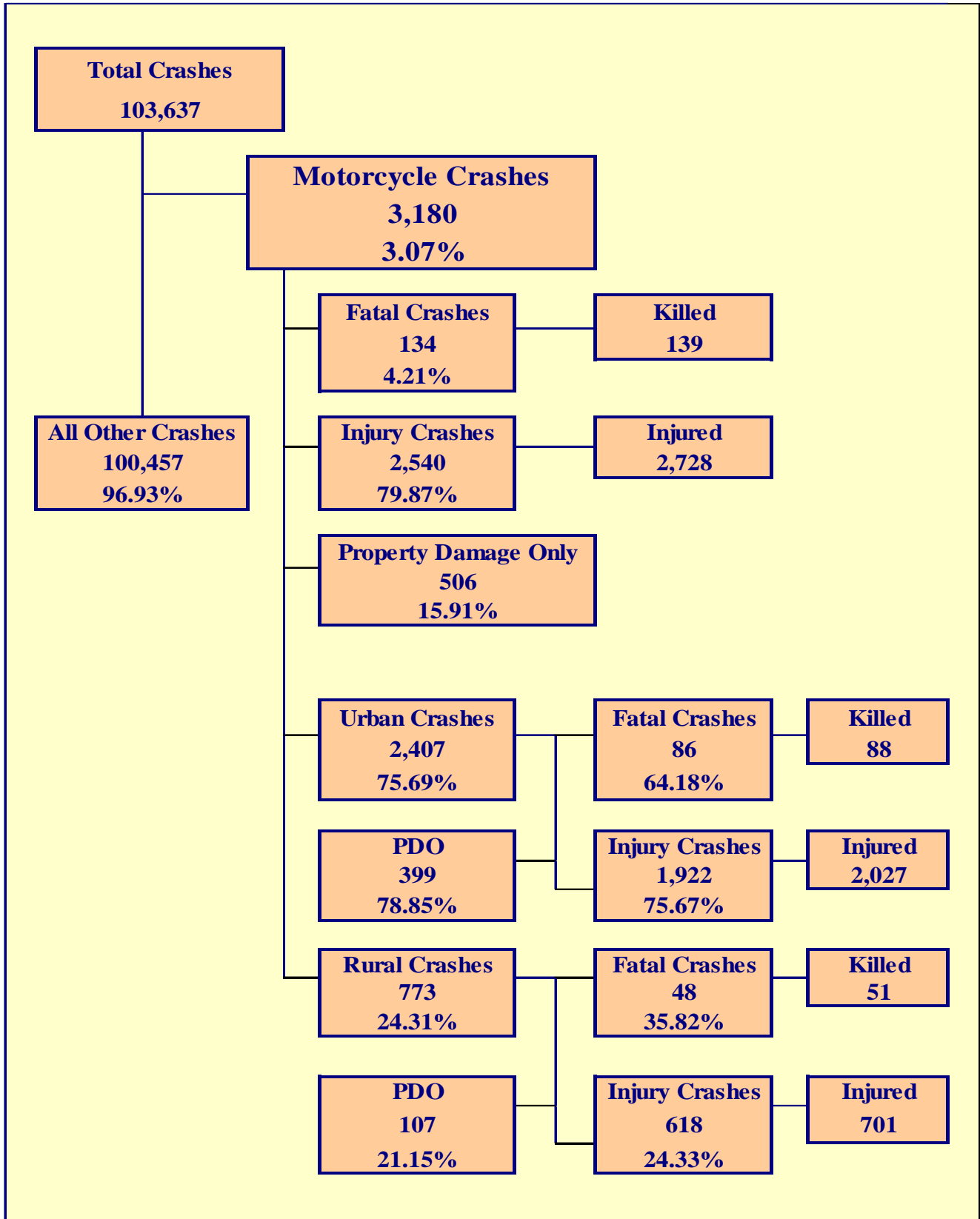
Lighting Conditions in Pedalcyclist Crashes

Type of Lighting Conditions	Number of Crashes			
	Total	Fatal	Injury	PDO
Daylight	1,635	11	1,345	279
Dawn	32	1	27	4
Dusk	75	1	59	15
Dark - Lighted	328	4	260	64
Dark - Not Lighted	53	1	40	12
Dark - Unknown Lighting	11	0	8	3
TOTAL	2,134	18	1,739	377

Table 7 – 13

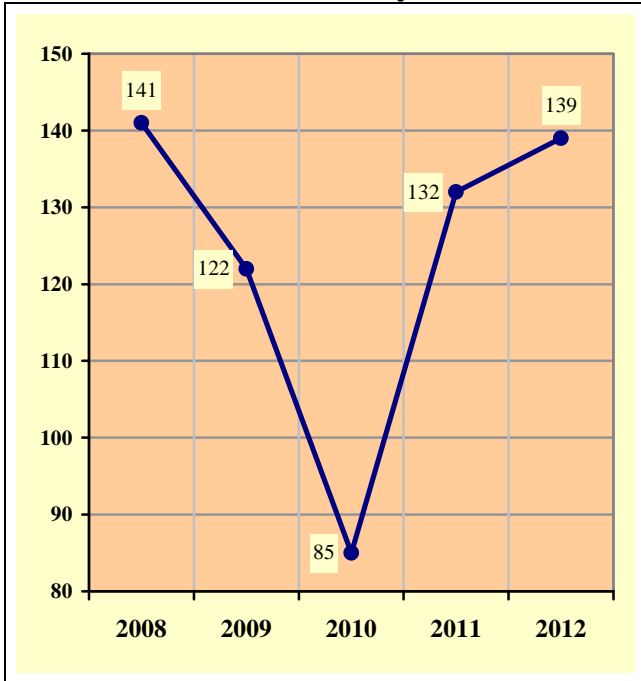
Weather Conditions in Pedalcyclist Crashes

Type of Weather Conditions	Number of Crashes			
	Total	Fatal	Injury	PDO
Clear	1,986	18	1,614	354
Cloudy	116	0	100	16
Sleet/Hail	1	0	1	0
Rain	13	0	10	3
Snow	1	0	1	0
Severe Crosswinds	0	0	0	0
Blowing Sand, Soil, Dirt	3	0	3	0
Fog, Smog, Smoke	0	0	0	0
Blowing Snow	0	0	0	0
Other	1	0	1	0
Unknown	13	0	9	4
TOTAL	2,134	18	1,739	377



Section 8: – Motorcycle (MC) Crashes

**Chart 8 – 1
MC Fatalities by Year**

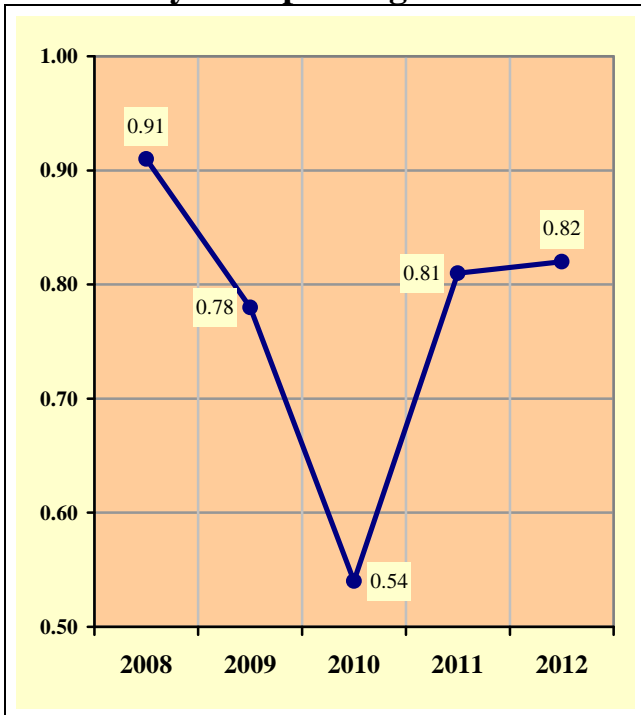


**Chart 8 – 2
MC Registrations in Arizona**

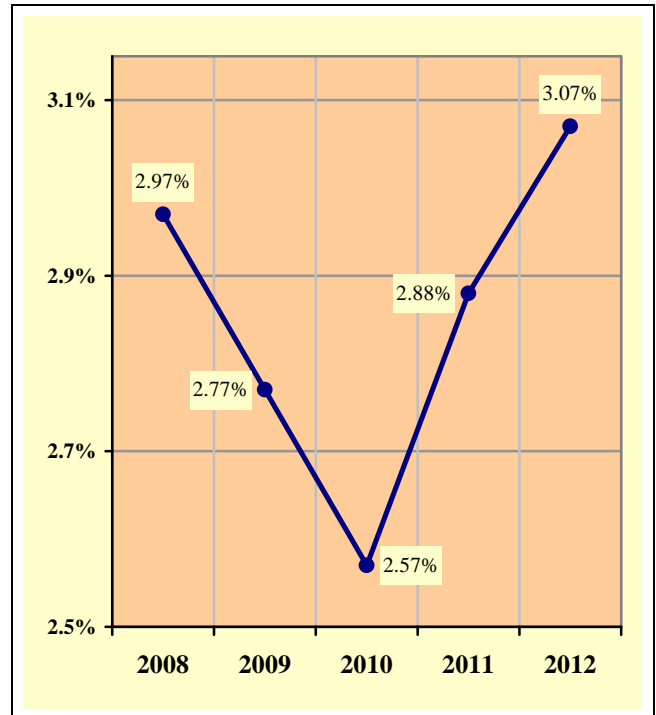


Total Point-in-Time of Registered Motorcycles at the end of
Calendar year 2012.
(Source: MVD - MV988 MV630419 Currently Registered Vehicles by County
Listing (motorcycle sub category), reports dated 12/31/12.)

**Chart 8 – 3
Fatality Rate per Registered MC**



**Chart 8 – 4
Percent of MC Crashes to All Crashes**



Section 8: – Motorcycle (MC) Crashes

**Table 8 – 1
MC Crashes by First Harmful Event**

First Harmful Event Type	Number of Crashes			
	Total	Fatal	Injury	PDO
Collision with Motor Vehicle in Transport	1,469	71	1,078	320
Overturning	419	22	371	26
Collision with Pedestrian	11	0	11	0
Collision with Pedalcyclist	13	0	11	2
Collision with Animal	29	4	21	4
Collision with Fixed Object	362	32	305	25
Collision with Non-fixed Object*	60	1	35	24
Vehicle Fire or Explosion	5	0	1	4
Other Non-collision**	326	2	290	34
Unknown	486	2	417	67
TOTAL	3,180	134	2,540	506
*Includes Collision with Parked Vehicles, Trains, Railway Vehicles, and Work Zone Equipment				
**Includes Vehicle Immersion, Jackknife, and Cargo Loss or Shift				

**Table 8 – 2
Lighting Conditions in MC Crashes**

Type of Lighting Conditions	Number of Crashes			
	Total	Fatal	Injury	PDO
Daylight	2,221	70	1,773	378
Dawn	35	3	25	7
Dusk	121	7	98	16
Dark - Lighted	618	33	502	83
Dark - Not Lighted	167	16	130	21
Dark - Unknown Lighting	18	5	12	1
TOTAL	3,180	134	2,540	506

**Table 8 – 3
Road Surface Conditions in MC Crashes**

Type of Road Surface Condition	Number of Operators			
	Total	In Fatal Crashes	In Injury Crashes	In PDO Crashes
Dry	3,141	136	2,516	489
Wet	48	1	37	10
Snow	1	0	1	0
Slush	0	0	0	0
Ice/Frost	0	0	0	0
Water (standing or moving)	0	0	0	0
Sand	11	0	9	2
Mud, Dirt, Gravel	30	0	25	5
Oil	2	0	2	0
Other	7	0	7	0
Unknown	34	8	16	10
TOTAL	3,274	145	2,613	516

Section 8: – Motorcycle (MC) Crashes

Table 8 – 4

MC Crashes by Geographic Location

Category	Total	Urban	Percent of Total	Rural	Percent of Total
Total Crashes	3,180	2,407	75.69%	773	24.31%
Fatal Crashes	134	86	64.18%	48	35.82%
Injury Crashes	2,540	1,922	75.67%	618	24.33%
PDO Crashes	506	399	78.85%	107	21.15%
Persons Killed	139	88	63.31%	51	36.69%
Persons Injured	2,728	2,027	74.30%	701	25.70%

Table 8 – 5

Operator Involvement by Age in MC Crashes

Operator Age Group	Number of Operators							
	Total	Percent of Total	In Fatal Crashes	Percent of Fatal	In Injury Crashes	Percent of Injury	In PDO Crashes	Percent of PDO
15 & Under	7	0.21%	0	0.00%	7	0.27%	0	0.00%
16	6	0.18%	0	0.00%	6	0.23%	0	0.00%
17	12	0.37%	0	0.00%	9	0.34%	3	0.58%
18	54	1.65%	1	0.69%	45	1.72%	8	1.55%
19	64	1.95%	0	0.00%	53	2.03%	11	2.13%
20	113	3.45%	1	0.69%	98	3.75%	14	2.71%
21	102	3.12%	3	2.07%	92	3.52%	7	1.36%
22	107	3.27%	6	4.14%	89	3.41%	12	2.33%
23	96	2.93%	5	3.45%	74	2.83%	17	3.29%
24	91	2.78%	2	1.38%	77	2.95%	12	2.33%
25-34	690	21.08%	25	17.24%	583	22.31%	82	15.89%
35-44	544	16.62%	25	17.24%	426	16.30%	93	18.02%
45-54	594	18.14%	26	17.93%	480	18.37%	88	17.05%
55-64	485	14.81%	35	24.14%	378	14.47%	72	13.95%
65-74	197	6.02%	11	7.59%	154	5.89%	32	6.20%
75 & Older	27	0.82%	5	3.45%	17	0.65%	5	0.97%
Unknown	85	2.60%	0	0.00%	25	0.96%	60	11.63%
TOTAL	3,274	100.00%	145	100.00%	2,613	100.00%	516	100.00%

Table 8 – 6

MC Operator Physical Condition

Type of Condition	Number of Operators							
	Total	Percent of Total	In Fatal Crashes	Percent of Fatal	In Injury Crashes	Percent of Injury	In PDO Crashes	Percent of PDO
No Apparent Influence	2,827	86.35%	67	46.21%	2,303	88.14%	457	88.57%
Had Been Drinking	186	5.68%	35	24.14%	142	5.43%	9	1.74%
Appeared to be Under the Influence of Drugs*	26	0.79%	11	7.59%	15	0.57%	0	0.00%
Medications	6	0.18%	0	0.00%	5	0.19%	1	0.19%
Illness	9	0.27%	1	0.69%	8	0.31%	0	0.00%
Physical Impairment	3	0.09%	0	0.00%	3	0.11%	0	0.00%
Fell Asleep or Fatigued	3	0.09%	0	0.00%	2	0.08%	1	0.19%
Other	17	0.52%	1	0.69%	11	0.42%	5	0.97%
Unknown	197	6.02%	30	20.69%	124	4.75%	43	8.33%
TOTAL	3,274	100.00%	145	100.00%	2,613	100.00%	516	100.00%

*Illegal drugs or narcotics

Section 8: – Motorcycle (MC) Crashes

Table 8 – 7

MC Operators Involved in Fatal Crashes by License Status

License Status	2010		2011		2012	
	Number of Operators	Percent of Total	Number of Operators	Percent of Total	Number of Operators	Percent of Total
No license	3	3.09%	4	2.90%	6	4.14%
Invalid	14	14.43%	23	16.67%	25	17.24%
Valid	79	81.44%	109	78.99%	111	76.55%
Unknown	1	1.03%	2	1.45%	3	2.07%
TOTALS	97	100.00%	138	100.00%	145	100.00%
Note: Includes only motorcycle operators involved in fatal crashes.						
Source: FARS Data Queries (http://www-fars.nhtsa.dot.gov)						

Table 8 – 8

MC Operator's Helmet Use

Severity of Injury	Helmet Used	Percent of Total	Helmet Not Used	Percent of Total	Unknown	Percent of Total	Total	Percent of Total
No Injury	245	14.93%	94	11.51%	204	25.00%	543	16.59%
Unknown Injury	12	0.73%	5	0.61%	41	5.02%	58	1.77%
Possible Injury	270	16.45%	107	13.10%	154	18.87%	531	16.22%
Non-Incapacitating Injury	696	42.41%	326	39.90%	307	37.62%	1,329	40.59%
Incapacitating Injury	356	21.69%	223	27.29%	105	12.87%	684	20.89%
Fatal Injury	62	3.78%	62	7.59%	5	0.61%	129	3.94%
TOTALS	1,641	100.00%	817	100.00%	816	100.00%	3,274	100.00%

Table 8 – 9

MC Passenger's Helmet Use

Severity of Injury	Helmet Used	Percent of Total	Helmet Not Used	Percent of Total	Unknown	Percent of Total	Total	Percent of Total
No Injury	19	18.45%	9	13.04%	14	20.59%	42	17.50%
Unknown Injury	1	0.97%	0	0.00%	3	4.41%	4	1.67%
Possible Injury	12	11.65%	11	15.94%	11	16.18%	34	14.17%
Non-Incapacitating Injury	43	41.75%	27	39.13%	31	45.59%	101	42.08%
Incapacitating Injury	23	22.33%	17	24.64%	9	13.24%	49	20.42%
Fatal Injury	5	4.85%	5	7.25%	0	0.00%	10	4.17%
TOTALS	103	100.00%	69	100.00%	68	100.00%	240	100.00%

Section 8: – Motorcycle (MC) Crashes

Table 8 – 10
MC Operators and Passengers Killed and Injured

Age of Victim	Persons Killed			Persons Injured			
	Total	Male	Female	Total	Male	Female	Gender Unknown
0-4	0	0	0	0	0	0	0
5-9	0	0	0	5	4	1	0
10-14	0	0	0	4	3	1	0
15-19	1	1	0	136	107	29	0
20-24	16	15	1	450	403	47	0
25-34	23	20	3	594	537	57	0
35-44	26	24	2	451	369	82	0
45-54	30	23	7	501	409	92	0
55-64	29	27	2	392	337	55	0
65-74	9	8	1	157	145	12	0
75 & Older	5	5	0	17	17	0	0
Unknown	0	0	0	21	17	1	3
TOTAL	139	123	16	2,728	2,348	377	3

Table 8 – 11
MC Operator Errors

Type of Violation or Behavior	Number of Operators							
	Total	Percent of Total	In Fatal Crashes	Percent of Fatal	In Injury Crashes	Percent of Injury	In PDO Crashes	Percent of PDO
No Improper Action	1,580	48.26%	49	33.79%	1,249	47.80%	282	54.65%
Speed too Fast for Conditions	720	21.99%	27	18.62%	611	23.38%	82	15.89%
Exceeded Lawful Speed	61	1.86%	9	6.21%	49	1.88%	3	0.58%
Failed to Yield Right-Of-Way	54	1.65%	0	0.00%	43	1.65%	11	2.13%
Followed Too Closely	76	2.32%	1	0.69%	61	2.33%	14	2.71%
Ran Stop Sign	12	0.37%	1	0.69%	8	0.31%	3	0.58%
Disregarded Traffic Signal	37	1.13%	3	2.07%	25	0.96%	9	1.74%
Made Improper Turn	41	1.25%	1	0.69%	28	1.07%	12	2.33%
Drove in Opposing Lane	40	1.22%	8	5.52%	28	1.07%	4	0.78%
Knowingly Operated with Faulty or Missing Equipment	5	0.15%	0	0.00%	5	0.19%	0	0.00%
Required Motorcycle Safety Equipment Not Used	14	0.43%	1	0.69%	13	0.50%	0	0.00%
Passed in No-Passing Zone	5	0.15%	1	0.69%	4	0.15%	0	0.00%
Unsafe Lane Change	43	1.31%	5	3.45%	28	1.07%	10	1.94%
Failed to Keep in Proper Lane	71	2.17%	5	3.45%	55	2.10%	11	2.13%
Disregarded Pavement Markings	5	0.15%	0	0.00%	5	0.19%	0	0.00%
Other Unsafe Passing	23	0.70%	0	0.00%	19	0.73%	4	0.78%
Inattention/Distracted	138	4.22%	2	1.38%	112	4.29%	24	4.65%
Electronic Communications Device	1	0.03%	0	0.00%	1	0.04%	0	0.00%
Other	105	3.21%	7	4.83%	89	3.41%	9	1.74%
Unknown	243	7.42%	25	17.24%	180	6.89%	38	7.36%
TOTAL	3,274	100.00%	145	100.00%	2,613	100.00%	516	100.00%

Section 8: – Motorcycle (MC) Crashes

Chart 8 – 5

All MC Crashes vs. Fatal MC Crashes by Time of Day - Weekdays

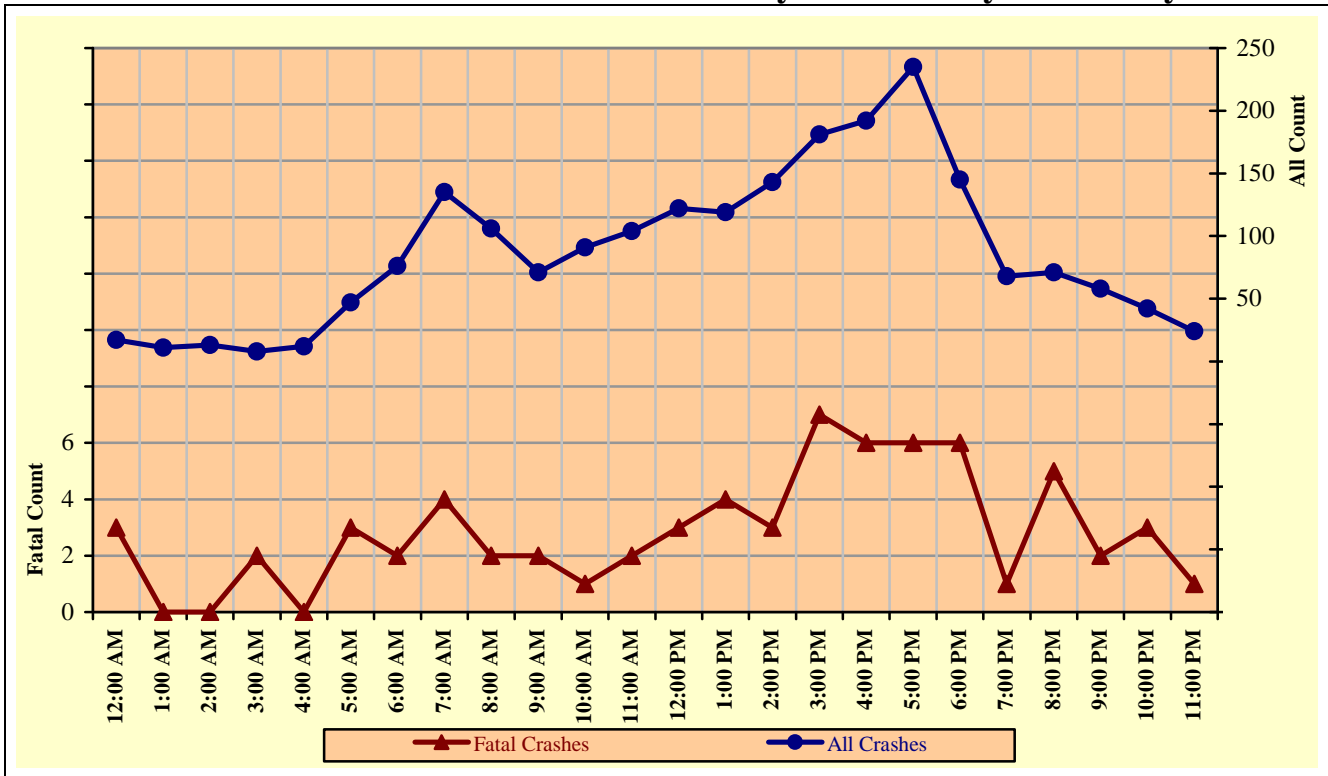
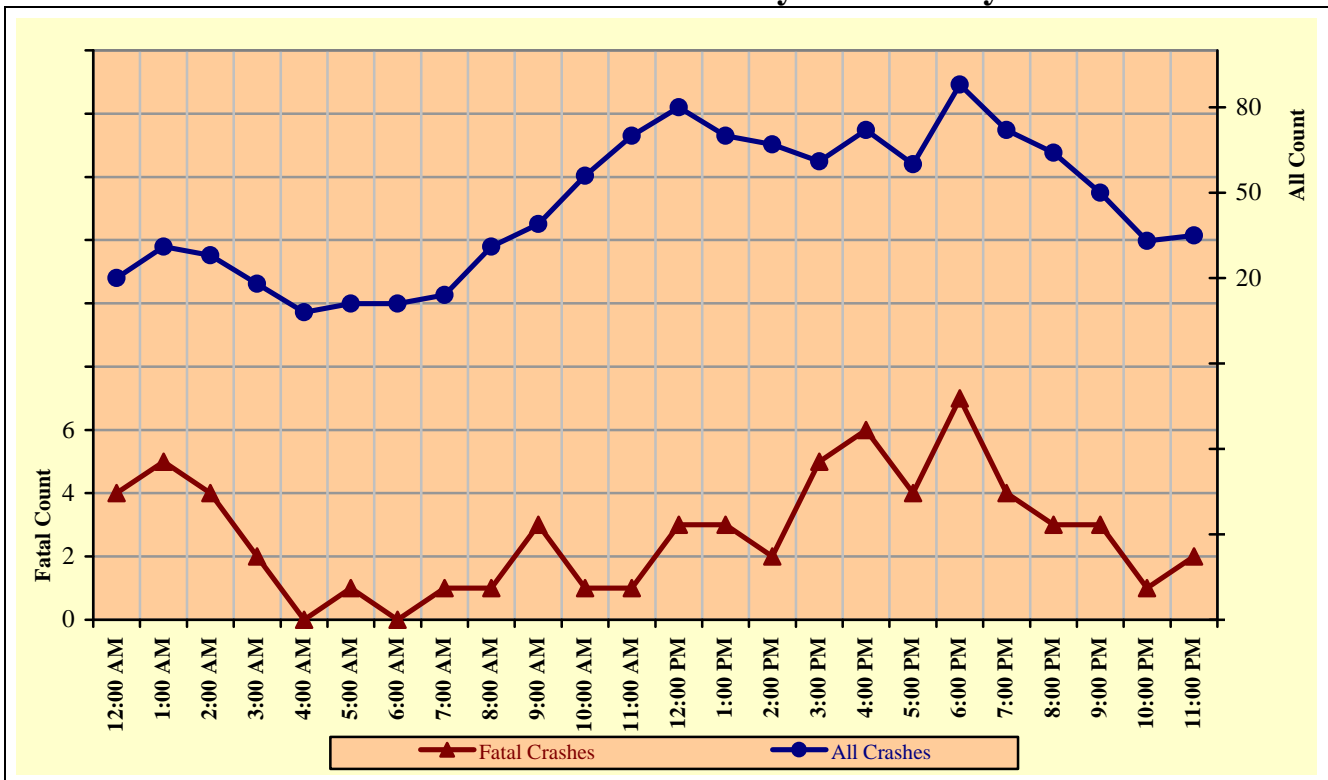


Chart 8 – 6

All MC Crashes vs. Fatal MC Crashes by Time of Day - Weekends



Section 8: – Motorcycle (MC) Crashes

Chart 8 – 7
All MC Crashes vs. Fatal MC Crashes by Day of Week

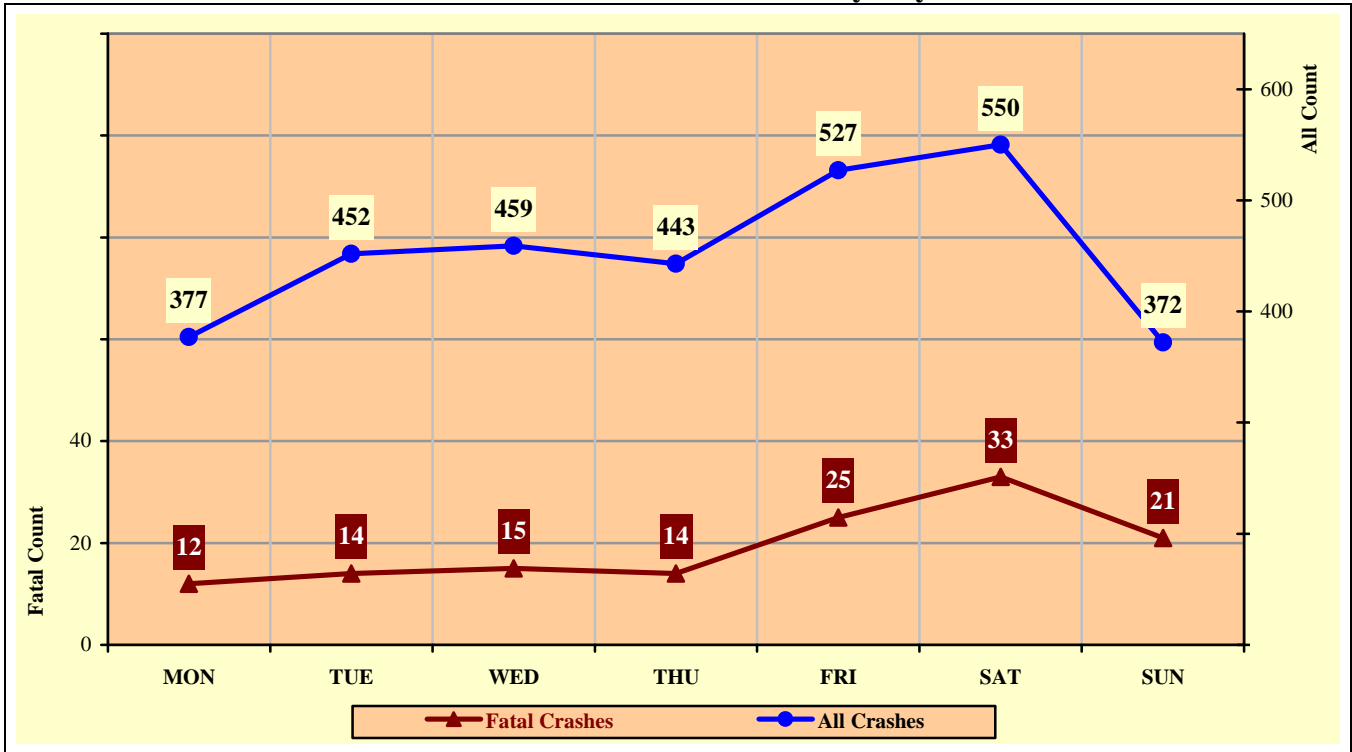
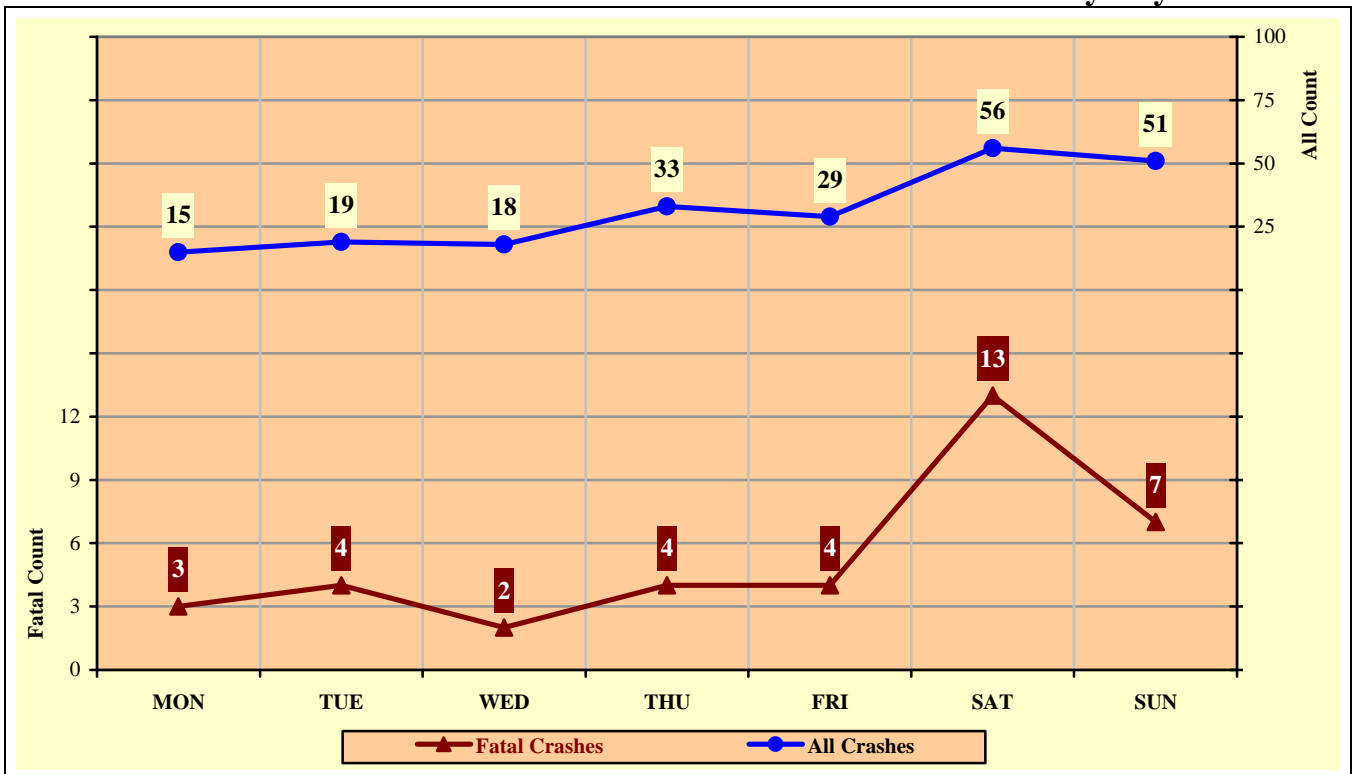


Chart 8 – 8
Alcohol Related MC Crashes vs. Fatal Alcohol Related MC Crashes by Day of Week



Section 8: – Motorcycle (MC) Crashes

Table 8 – 12
MC Crashes by Hour and Day of Week

Hour Beginning	Total Crashes		Monday		Tuesday		Wednesday		Thursday		Friday		Saturday		Sunday		Weekdays		Weekends	
	All	Fatal	All	Fatal	All	Fatal	All	Fatal	All	Fatal	All	Fatal	All	Fatal	All	Fatal	All	Fatal	All	Fatal
12:00 AM	37	7	3	2	2	0	3	2	5	0	7	1	8	1	9	1	17	3	20	4
1:00 AM	42	5	3	0	3	0	0	0	4	0	4	0	16	4	12	1	11	0	31	5
2:00 AM	41	4	4	1	3	0	2	0	3	0	5	0	15	3	9	0	13	0	28	4
3:00 AM	26	4	1	0	3	0	0	0	4	2	1	0	9	2	8	0	8	2	18	2
4:00 AM	20	0	2	0	4	0	1	0	3	0	4	0	3	0	3	0	12	0	8	0
5:00 AM	58	4	5	0	15	1	15	1	7	0	10	1	4	0	2	1	47	3	11	1
6:00 AM	87	2	16	0	14	1	21	0	15	1	10	0	10	0	1	0	76	2	11	0
7:00 AM	149	5	20	1	35	1	28	0	28	1	24	1	10	1	4	0	135	4	14	1
8:00 AM	137	3	11	0	22	0	26	0	19	1	28	1	24	1	7	0	106	2	31	1
9:00 AM	110	5	14	0	15	1	16	0	12	0	14	1	25	3	14	0	71	2	39	3
10:00 AM	147	2	14	0	23	1	16	0	14	0	24	0	37	1	19	0	91	1	56	1
11:00 AM	174	3	20	0	16	0	25	0	24	1	19	1	41	0	29	1	104	2	70	1
12:00 PM	202	6	20	0	30	1	21	1	23	0	28	1	44	0	36	3	122	3	80	3
1:00 PM	189	7	28	1	19	0	21	1	23	0	28	2	36	1	34	2	119	4	70	3
2:00 PM	210	5	27	0	21	0	34	1	20	2	41	0	43	1	24	1	143	3	67	2
3:00 PM	242	12	26	2	32	1	41	1	39	0	43	3	33	4	28	1	181	7	61	5
4:00 PM	264	12	32	1	43	2	35	1	39	1	43	1	37	3	35	3	192	6	72	6
5:00 PM	295	10	38	1	52	0	53	1	47	1	45	3	38	2	22	2	235	6	60	4
6:00 PM	233	13	36	3	42	1	38	2	29	0	50	4	19	1	19	2	145	6	88	7
7:00 PM	140	5	13	0	13	0	19	1	23	0	30	2	18	0	24	2	68	1	72	4
8:00 PM	135	8	16	0	17	2	14	2	24	1	22	1	29	1	13	1	71	5	64	3
9:00 PM	108	5	13	0	16	0	9	1	20	1	20	2	18	1	12	0	58	2	50	3
10:00 PM	75	4	10	0	6	1	14	0	12	2	10	0	19	1	4	0	42	3	33	1
11:00 PM	59	3	5	0	6	1	7	0	6	0	17	0	14	2	4	0	24	1	35	2
TOTAL	3,180	134	377	12	452	14	459	15	443	14	527	25	550	33	372	21	2,091	68	1,089	66

Crashes during Weekends accounted for 34.25% of all MC crashes and 49.25% of Fatal MC Crashes.

Crashes during Weekdays accounted for 65.75% of all MC crashes and 50.75% of Fatal MC Crashes.

Acknowledgements

Special gratitude to our other providers of data and information including:

National Highway Transportation Safety Administration

Health Status and Vital Statistics Section, Arizona Department of Health Services

The Information Technology Group, Arizona Department of Transportation

Motor Vehicle Division, Arizona Department of Transportation

Multimodal Planning Division, Data Bureau, Arizona Department of Transportation

The National Safety Council