

ARIZONA

MOTOR VEHICLE CRASH FACTS

2014



2014 Motor Vehicle Crash Facts for the State of Arizona

Prepared by:
The Arizona Department of Transportation
Intermodal Transportation Division

Publication Date: June 1, 2015



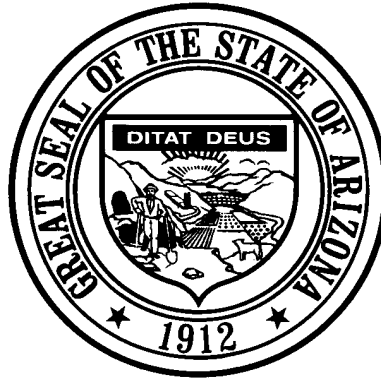
This publication is an annual statistical review of the motor vehicle crashes in the State of Arizona for the calendar year 2014. The results are compiled from Arizona Traffic Crash Reports submitted to the Arizona Department of Transportation by state, county, city, tribal, and other law enforcement agencies. Specific inquiries regarding the data in this report should be directed to:

The Arizona Department of Transportation
Intermodal Transportation Division
Traffic Records Section
206 S. 17th Ave. MD 064R
Phoenix, AZ 85007-3213

E-mail: azcrashfacts@azdot.gov

In order to provide the most current information, preliminary data is utilized when necessary. For this reason, previous or future reports may differ slightly and we encourage you to refer to the latest issue of Motor Vehicle Crash Facts.

This issue as well as previous issues of this publication may be viewed and downloaded from ADOT's Web Site at:
<http://www.azdot.gov/mvd/Statistics/arizona-motor-vehicle-crash-facts>



Douglas A. Ducey
Governor

Arizona Department of Transportation

John S. Halikowski
Director

State Transportation Board

Kelly O. Anderson – District 4
Chairman

Joseph E. La Rue – District 1
Vice Chairman

Members

Jack Sellers – District 1
Michael S. Hammond – District 2
William F. Cuthbertson – District 3
Deanna L. Beaver – District 6

OVERVIEW

Section 1: – Highlights and Historical Trends 1

Section 2: – Geographic Location..... 9

Section 3: – Crash Descriptions 17

Section 4: – Safety Devices 23

Section 5: – Motor Vehicle and Driver Descriptions 26

Section 6: – Alcohol Related Crashes..... 32

Section 7: – Pedestrian and Pedalcyclist Crashes 41

Section 8: – Motorcycle (MC) Crashes 47

Acknowledgements 57

2014 Arizona Crash Facts Summary

Table of Contents

Section 1: Highlights and Historical Trends	1
Arizona Crash Facts Summary and Comparison	2
Arizona at a Glance – 2014	2
Licensed Drivers, Motor Vehicle Registration and Crash History in Arizona	3
Historical Trends – Arizona and the United States	3
Statewide Economic Loss Due to Motor Vehicle Crashes	4
Average Economic Cost per Incident	4
Traffic Crashes in Arizona by Year	5
Victims of Motor Vehicle Crashes	6
Arizona’s 2014 Estimated Population	6
Victims of Motor Vehicle Crashes (Arizona Residents Only)	6
Vehicle Miles Traveled	7
Arizona vs. U.S. Fatality Rate	7
Traffic Fatalities by Geographic Region	7
Traffic Injuries by Geographic Region	7
Holiday Crash Statistics	8
Section 2: Geographic Location	9
Crash Severity by First Harmful Event Statewide	10
Crashes by County	10
Crash Severity by First Harmful Event in Urban Areas	11
Crash Severity by First Harmful Event in Rural Areas	11
Analysis by Jurisdiction	12
Total Fatalities by County for 2013 and 2014	15
Urban and Rural Crashes by Day of Week	16
Urban and Rural Fatal Crashes by Day of Week	16
All Urban and Rural Crashes vs. Urban and Rural Fatal Crashes by Month	16
Section 3: Crash Descriptions	17
Manner of Collision in Multi-Vehicle Crashes	18
Lighting Conditions	18
Weather Conditions	18
Road Surface Conditions	19
Roadway Grade	19
Roadway Alignment	19
All Crashes vs. Fatal Crashes by Time of Day - Weekdays	20
All Crashes vs. Fatal Crashes by Time of Day - Weekends	20
Crashes by Day of Week	21
Fatal Crashes by Day of Week	21
All Crashes vs. Fatal Crashes by Month	21
Crashes by Hour and Day of Week	22
Section 4: Safety Devices	23
Child Safety Device Usage (less than five years old)	24
Driver Safety Device Usage	24
Passenger Safety Device Usage	24
Driver Safety Device Usage by Gender	25
Driver Safety Device Usage by Age	25
Section 5: Motor Vehicle and Driver Descriptions	26
Arizona Motor Vehicle Registrations	27
Motor Vehicle Crash Involvement by Vehicle Type	27
Hit and Run Drivers Involved in Crashes	28
Gender of Drivers Involved in Crashes	28

2014 Arizona Crash Facts Summary

License Status of Drivers Involved in Crashes.....	28
Passengers Killed and Injured by Age and Gender.....	28
Drivers and Passengers Killed and Injured by Vehicle Type.....	29
Drivers Killed and Injured by Age and Gender.....	29
Licensed Drivers in Arizona by Age.....	30
Driver Involvement by Age.....	30
Driver Violations.....	31
Driver Physical Condition.....	31
Section 6: Alcohol Related Crashes.....	32
Economic Loss Due to Alcohol Related Crashes in Arizona for 2014.....	33
Alcohol Related Crash History.....	33
Manner of Collision in Alcohol Related Crashes.....	33
Alcohol Related Crashes by First Harmful Event.....	34
Alcohol Related Crashes by Vehicle Type.....	34
Lighting Conditions in Alcohol Related Crashes.....	35
Road Surface Conditions in Alcohol Related Crashes.....	35
Gender of Drivers Involved in Alcohol Related Crashes.....	35
Driver Involvement by Age in Alcohol Related Crashes.....	36
When Alcohol Related Crashes Occurred in 2014.....	36
Safety Device Usage for Drinking Drivers.....	36
Persons Killed and Injured in Alcohol Related Crashes.....	37
Alcohol Related Crashes by County.....	37
All Alcohol Related Crashes vs. Fatal Alcohol Related Crashes by Day of Week.....	38
All Alcohol Related Crashes vs. Fatal Alcohol Related Crashes by Month.....	38
All Alcohol Related Crashes vs. Fatal Alcohol Related Crashes - Weekdays.....	39
All Alcohol Related Crashes vs. Fatal Alcohol Related Crashes - Weekends.....	39
Alcohol Related Crashes by Hour and Day of Week.....	40
Section 7: Pedestrian and Pedalcyclist Crashes.....	41
Pedestrians Killed and Injured By Age and Gender.....	42
Pedestrian Crashes by Geographic Location.....	42
Pedestrian Crash History.....	42
Pedestrians Killed by Age and Action.....	43
Pedestrians Injured by Age and Action.....	43
Pedestrian Physical Condition in Motor Vehicle Crashes.....	43
Lighting Conditions in Pedestrian Crashes.....	44
Weather Conditions in Pedestrian Crashes.....	44
Pedalcyclists Killed and Injured by Age and Gender.....	44
Pedalcycle Crashes by Geographic Location.....	45
Pedalcycle Crash History.....	45
Lighting Conditions in Pedalcyclist Crashes.....	45
Weather Conditions in Pedalcyclist Crashes.....	45
Pedestrian Crashes by County.....	46
Pedalcyclist Crashes by County.....	46
Section 8: Motorcycle (MC) Crashes.....	47
MC Fatalities by Year.....	48
MC Registrations in Arizona.....	48
Fatality Rate per Registered MC.....	48
Percent of MC Crashes to All Crashes.....	48
MC Crashes by First Harmful Event.....	49
Lighting Conditions in MC Crashes.....	49
Road Surface Conditions in MC Crashes.....	49
MC Crashes by Geographic Location.....	50
Operator Involvement by Age in MC Crashes.....	50
MC Operator Physical Condition.....	50
MC Operators Involved in Fatal Crashes by License Status.....	51

2014 Arizona Crash Facts Summary

MC Operator's Helmet Use.....	51
MC Passenger's Helmet Use.....	51
MC Operators and Passengers Killed and Injured.....	52
MC Operator Violations.....	52
All MC Crashes vs. Fatal MC Crashes by Time of Day - Weekdays.....	53
All MC Crashes vs. Fatal MC Crashes by Time of Day - Weekends.....	53
All MC Crashes vs. Fatal MC Crashes by Day of Week.....	54
Alcohol Related MC Crashes vs. Fatal Alcohol Related MC Crashes by Day of Week.....	54
MC Crashes by Hour and Day of Week.....	55
MC Crashes by County.....	56
Manner of Collision in MC Crashes.....	56
Acknowledgements.....	57

2014 Arizona Crash Facts Summary

BREAKDOWN OF ALL CRASHES IN ARIZONA

TOTAL	109,554
FATAL	708
INJURY	34,451
PROPERTY DAMAGE ONLY	74,395
URBAN	89,352
RURAL	20,202
ALCOHOL RELATED	4,887
PEDESTRIAN	1,561
PEDALCYCLE	1,742
MOTORCYCLE	3,127
SINGLE VEHICLE	18,672
MULTI-VEHICLE	90,882

BREAKDOWN OF FATAL CRASHES IN ARIZONA

TOTAL	708
ALCOHOL RELATED	238
URBAN	378
RURAL	330
SINGLE VEHICLE	260
MULTI-VEHICLE	448
ALCOHOL RELATED SINGLE VEHICLE	97
ALCOHOL RELATED MULTI-VEHICLE	141

BREAKDOWN OF PERSONS KILLED AND INJURED

TYPE	KILLED	INJURED
IN ALL CRASHES	774	50,890
IN ALCOHOL RELATED CRASHES	265	3,146
IN URBAN CRASHES	397	41,730
IN RURAL CRASHES	377	9,160
SPEED RELATED*	239	20,043
USING SAFETY DEVICE	201	41,051
NOT USING SAFETY DEVICE	266	3,276
DRIVERS AGE 24 OR YOUNGER	70	7,764
DRINKING DRIVERS AGE 24 OR YOUNGER	20	390

BREAKDOWN OF CRASHES BY TIME

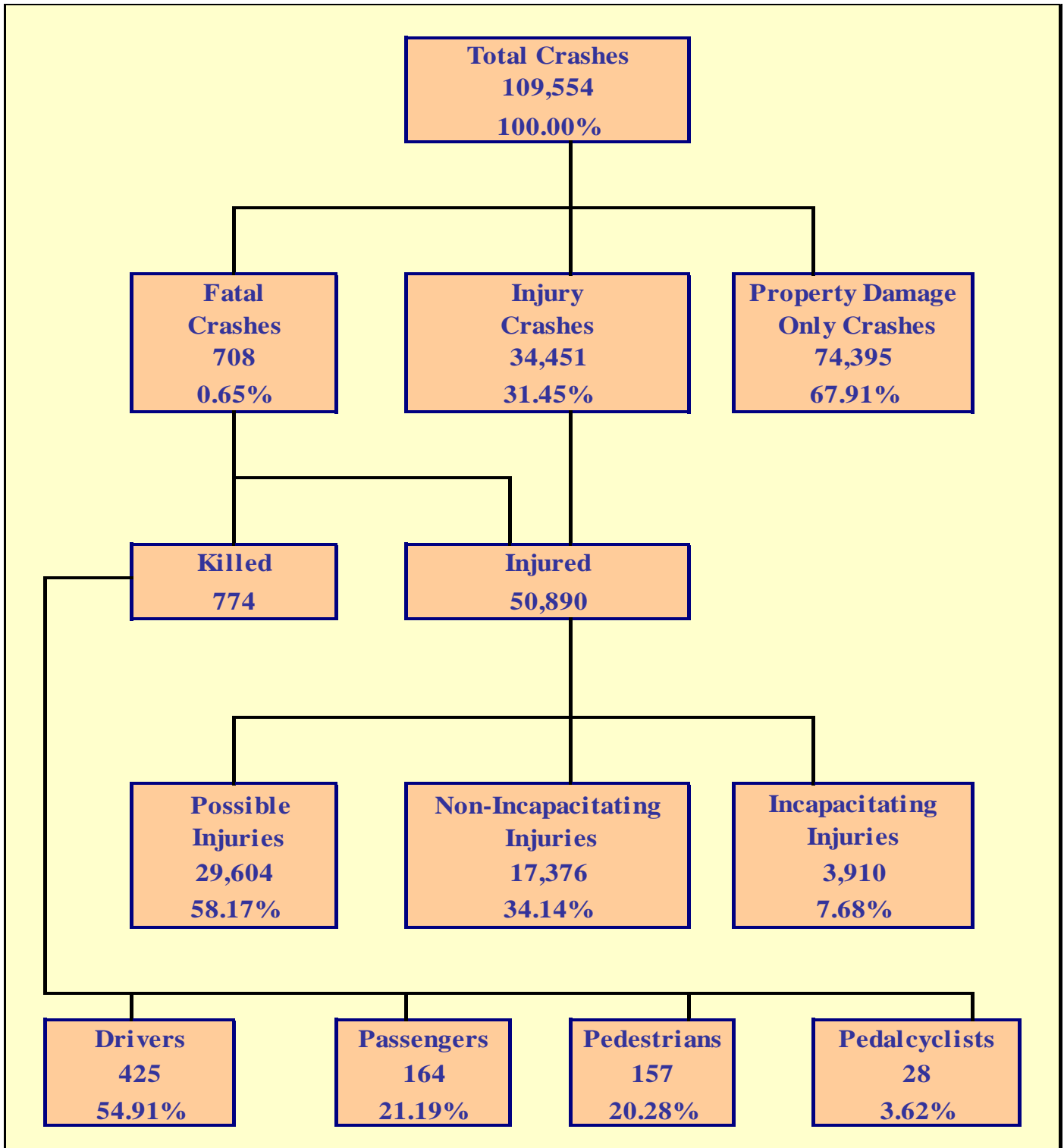
PEAK MONTH FOR ALL CRASHES	DECEMBER
PEAK DAY FOR ALL CRASHES	FRIDAY
PEAK HOUR FOR ALL CRASHES	5 PM - 6 PM
PEAK MONTH FOR FATAL CRASHES	MAY
PEAK DAY FOR FATAL CRASHES	SATURDAY
PEAK DATE FOR ALL CRASHES IN 2014	DECEMBER 4TH (511 CRASHES)
PEAK DATE FOR FATAL CRASHES IN 2014	NOVEMBER 30TH (7 CRASHES)
PEAK HOUR FOR ALCOHOL RELATED CRASHES	2 AM - 3 AM
PEAK DAY FOR MOTORCYCLE CRASHES	FRIDAY
PEAK HOUR FOR FATAL MOTORCYCLE CRASHES	5 PM - 6 PM

OTHER FACTS

MOST COMMON MANNER OF COLLISION	REAR END
MOST COMMON DRIVER VIOLATION	SPEED TOO FAST FOR CONDITIONS

*Note: These numbers represent the total number of fatalities and injuries in crashes where the violation "speed too fast for conditions" or "exceeded lawful speed" was marked on the crash form

THIS PAGE LEFT BLANK FOR PRINTING PURPOSES



Section 1: – Highlights and Historical Trends

Table 1 – 1

Arizona Crash Facts Summary and Comparison

Category	2013	2014	Percent Change
Total Crashes	107,477	109,554	1.93%
Total Fatalities	849	774	-8.83%
Total Injuries	50,389	50,890	0.99%
Alcohol Related Fatalities	282	265	-6.03%
Alcohol Related Injuries	3,520	3,146	-10.63%
Urban Fatalities	442	397	-10.18%
Urban Injuries	40,877	41,730	2.09%
Rural Fatalities	407	377	-7.37%
Rural Injuries	9,512	9,160	-3.70%
MC Operator and Passenger Fatalities	149	127	-14.77%
MC Operator and Passenger Injuries	2,660	2,655	-0.19%
Pedestrians Fatalities	160	157	-1.88%
Pedestrians Injuries	1,364	1,347	-1.25%
Pedalcyclist Fatalities	29	28	-3.45%
Pedalcyclist Injuries	1,680	1,466	-12.74%
Millions of vehicle miles traveled (VMT)	60,586	62,631	3.38%
Fatalities per 100 million VMT	1.40	1.24	-11.81%
Injuries per 100 million VMT	83.17	81.25	-2.30%

Arizona at a Glance – 2014

- Approximately **2.12** persons were killed each day.
- One person was killed every **11.33** hours.
- There were **139.33** persons injured every day.
- One person was injured every **10.34** minutes.
- Alcohol Related crashes accounted for **4.46%** of all crashes and **33.62%** of all fatal crashes.
- Of all alcohol related crashes, **78.96%** occurred in Urban areas and **21.04%** occurred in Rural areas, while **60.08%** of all alcohol related fatal crashes occurred in Urban areas and **39.92%** occurred in Rural areas.
- Single vehicle crashes accounted for **17.04%** of all crashes and **36.72%** of all fatal crashes.
- Of all Pedestrian crashes, **9.99%** were fatal while **1.61%** of Pedalcycle crashes were fatal.
- Crashes which occurred during daylight hours (6:00 a.m. to 6:00 p.m.) accounted for **72.5%** of all crashes.
- Motor vehicle crashes resulted in **\$3.025** billion in economic losses to Arizona.
- Children age 14 and younger accounted for **28** fatalities and **3,380** injuries in motor vehicle crashes.

Section 1: – Highlights and Historical Trends

The Nation In 2014

The population of the United States was estimated at **320,828,051** (source: www.census.gov).

An estimated **32,675** persons were killed in motor vehicle crashes in the United States.

An estimated **2,338,000** persons were injured in motor vehicle crashes in the United States.

Source for this data: www.nhtsa.gov.

**Table 1 – 2
Licensed Drivers, Motor Vehicle Registration
and Crash History in Arizona**

Calendar Year	Total Crashes	Fatal Crashes	Injury Crashes	Property Damage Only Crashes	Total Persons Killed	Total Persons Injured	Total Licensed Drivers	Total Registered Vehicles
2010	106,895	695	33,416	72,784	759	50,459	4,537,653	4,805,904
2011	103,945	756	33,219	69,970	827	49,848	4,634,405	4,855,014
2012	103,914	738	33,579	69,597	821	50,059	4,736,517	4,969,620
2013	107,477	782	34,106	72,589	849	50,389	4,826,903	5,130,780
2014	109,554	708	34,451	74,395	774	50,890	4,922,676	5,300,980

**Table 1 – 3
Historical Trends – Arizona and the United States**

Calendar Year	U.S. Fatality Rate*	Arizona Fatality Rate	Arizona Traffic Fatalities	Estimated Motor Vehicle Miles Traveled	Arizona Fatal Crash Rate
2010	1.11	1.27	759	59,906	1.16
2011	1.10	1.39	827	59,575	1.27
2012	1.14	1.37	821	60,129	1.23
2013	1.10	1.40	849	60,586	1.29
2014	1.07	1.24	774	62,631	1.13

Vehicle miles traveled are shown in million miles and rates per 100 million miles

*Source for U.S. Fatality Rate: www.nhtsa.gov

Section 1: – Highlights and Historical Trends

Statewide Economic Loss Due to Motor Vehicle Crashes

Fatalities	\$1,184,220,000
Incapacitating Injuries	\$298,716,180
Non-Incapacitating Injuries	\$425,364,480
Possible Injuries	\$410,666,688
Property Damage Only	\$705,710,970
TOTAL	\$3,024,678,318

Table 1 – 4

Estimated Economic Loss by County

County	Cost of Traffic Crashes			
	Fatalities	Injuries	PDO	Total
Apache	\$ 36,720,000	\$ 4,876,722	\$ 2,343,042	\$ 43,939,764
Cochise	\$ 18,360,000	\$ 10,808,328	\$ 9,248,850	\$ 38,417,178
Coconino	\$ 68,850,000	\$ 31,270,956	\$ 24,881,778	\$ 125,002,734
Gila	\$ 30,600,000	\$ 9,753,648	\$ 5,169,870	\$ 45,523,518
Graham	\$ 15,300,000	\$ 3,476,160	\$ 1,944,630	\$ 20,720,790
Greenlee	\$ 1,530,000	\$ 843,438	\$ 853,740	\$ 3,227,178
La Paz	\$ 16,830,000	\$ 5,930,688	\$ 2,229,210	\$ 24,989,898
Maricopa	\$ 563,040,000	\$ 781,103,964	\$ 517,480,272	\$ 1,861,624,236
Mohave	\$ 44,370,000	\$ 37,574,658	\$ 18,450,270	\$ 100,394,928
Navajo	\$ 58,140,000	\$ 9,987,024	\$ 6,289,218	\$ 74,416,242
Pima	\$ 134,640,000	\$ 127,286,412	\$ 52,912,908	\$ 314,839,320
Pinal	\$ 67,320,000	\$ 44,497,194	\$ 23,098,410	\$ 134,915,604
Santa Cruz	\$ 12,240,000	\$ 3,903,744	\$ 4,003,092	\$ 20,146,836
Yavapai	\$ 65,790,000	\$ 37,418,394	\$ 20,964,060	\$ 124,172,454
Yuma	\$ 50,490,000	\$ 26,016,018	\$ 15,841,620	\$ 92,347,638
TOTALS	\$ 1,184,220,000	\$ 1,134,747,348	\$ 705,710,970	\$ 3,024,678,318

NOTE: Cost estimates are based on a 2% increase of the 2013 National Safety Council estimates of the average cost of motor vehicle crashes, deaths, and injuries. These costs are an estimate of wage and productivity losses, medical expenses, administrative expenses, motor vehicle damage, and employer costs. A description of the National Safety Council's current cost estimating procedures may be found in the Technical Appendix of *Injury Facts*® (source: www.nsc.org/learn/safety-knowledge/Pages/injury-facts-estimating-cost-of-unintentional-injuries.aspx).

Table 1 – 5

Average Economic Cost per Incident

1.	Fatality	\$1,530,000
2.	Incapacitating Injury	\$76,398
3.	Non-Incapacitating Injury	\$24,480
4.	Possible Injury	\$13,872
5.	Property Damage Only	\$9,486

Section 1: – Highlights and Historical Trends

Traffic Crashes in Arizona by Year

Chart 1 – 1
Total Crashes

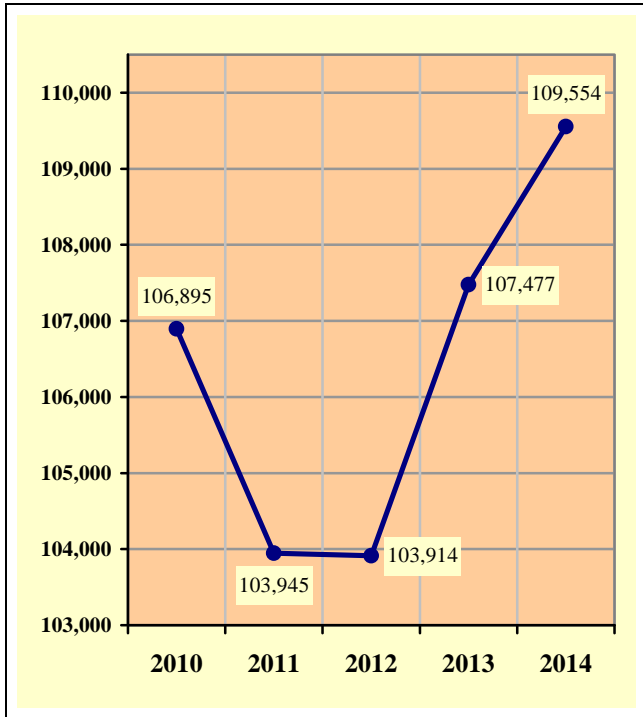


Chart 1 – 2
Fatal Crashes

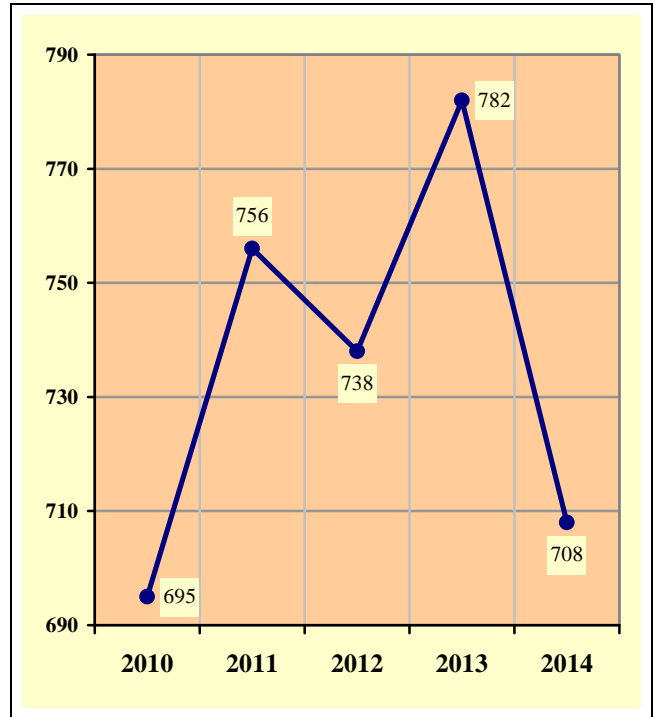


Chart 1 – 3
Injury Crashes

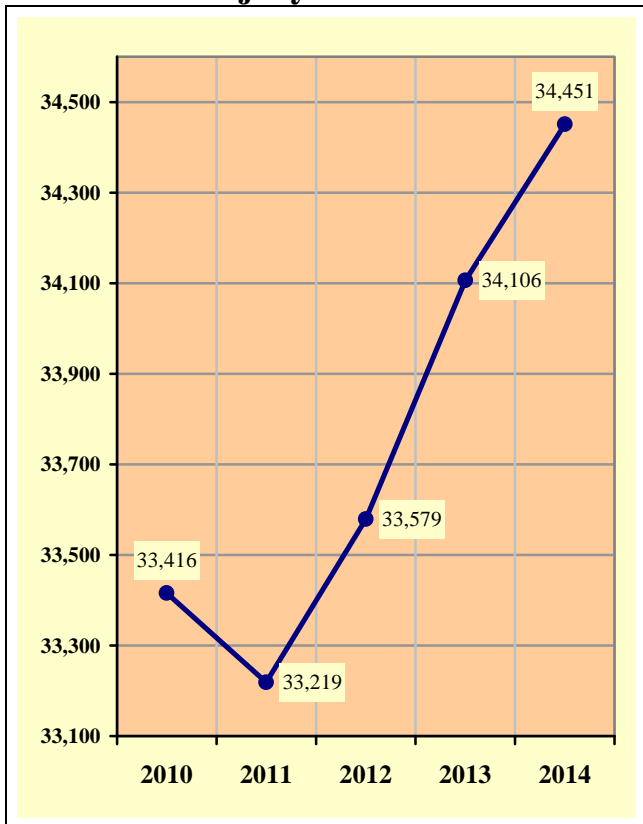
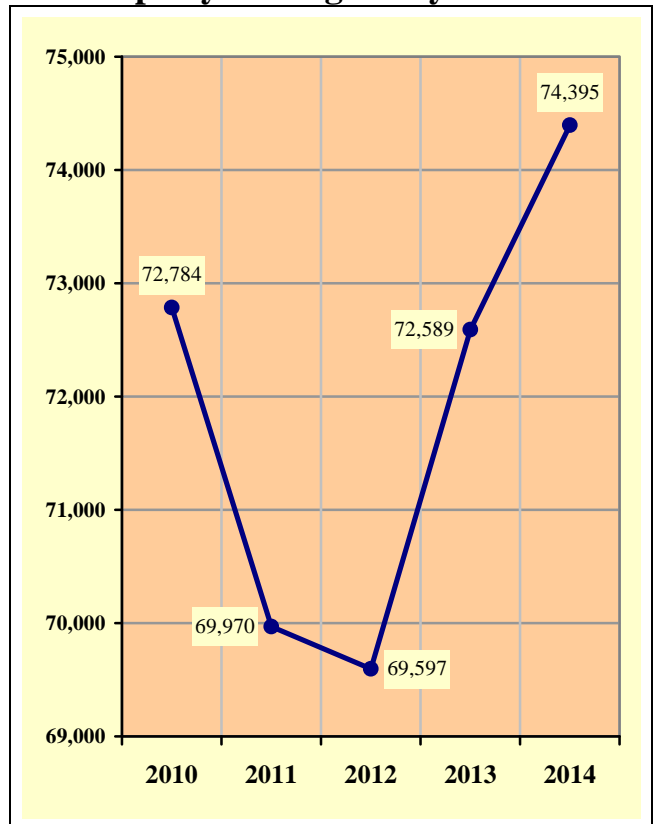


Chart 1 – 4
Property Damage Only Crashes



Section 1: – Highlights and Historical Trends

**Table 1 – 6
Victims of Motor Vehicle Crashes**

Age of Victim	Persons Killed				Persons Injured			
	Total	Male	Female	Gender Unknown	Total	Male	Female	Gender Unknown
0-4	9	7	2	0	841	438	403	0
5-9	11	4	7	0	1,131	530	601	0
10-14	8	4	4	0	1,408	654	754	0
15-19	50	40	10	0	5,156	2,496	2,660	0
20-24	84	66	18	0	6,751	3,307	3,444	0
25-34	129	94	35	0	9,819	4,723	5,096	0
35-44	91	64	27	0	7,576	3,570	4,006	0
45-54	116	85	31	0	7,170	3,447	3,723	0
55-64	115	87	28	0	5,516	2,674	2,842	0
65-74	85	54	31	0	3,113	1,490	1,623	0
75 & Older	67	35	32	0	1,785	822	963	0
Unknown	9	4	2	3	624	244	257	123
TOTAL	774	544	227	3	50,890	24,395	26,372	123

**Table 1 – 7
Arizona’s 2014 Estimated Population**

Race/Ethnic group	Population Percentage	Traffic Crash Fatality Percentage	Population Estimate*
White non-Hispanic	57.60%	**	3,840,219
Hispanic or Latino	27.68%	25.86%	1,845,246
Black or African American	5.24%	**	349,071
American Indian or Alaska Native	5.69%	18.71%	379,590
Asian or Pacific Islander	3.80%	1.00%	253,115
TOTAL	100.00%	**	6,667,241

Source: Arizona Department of Health Services, Health Status and Vital Statistics Section.
 *Population estimates for 2014 are available at www.azdhs.gov/plan/menu/info/pop/index.php
 **Data not released by Arizona Department of Health Services, Health Status and Vital Statistics Section

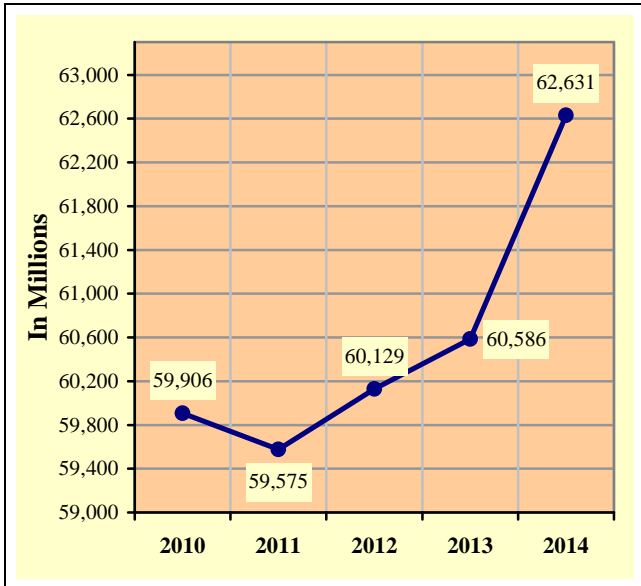
**Table 1 – 8
Victims of Motor Vehicle Crashes (Arizona Residents Only)***

Age of Victim	Total Killed	Male	Female	Detail Breakdown:					
				White non-Hispanic	Hispanic or Latino	Black or African American	American Indian or Alaska Native	Asian or Pacific Islander	Ethnicity Unknown
1-14	32	16	16	**	20	**	6	0	0
15-19	46	35	11	14	20	1	10	1	0
20-44	279	208	71	117	83	10	63	6	0
45-64	205	153	52	112	44	7	42	0	0
65 & Older	138	78	60	110	14	4	10	0	0
TOTAL	700	490	210	**	181	**	131	7	0

Source: Arizona Department of Health Services, Health Status and Vital Statistics Section.
 *Includes victims of crashes occurring outside Arizona.
 **Data not released by Arizona Department of Health Services, Health Status and Vital Statistics Section

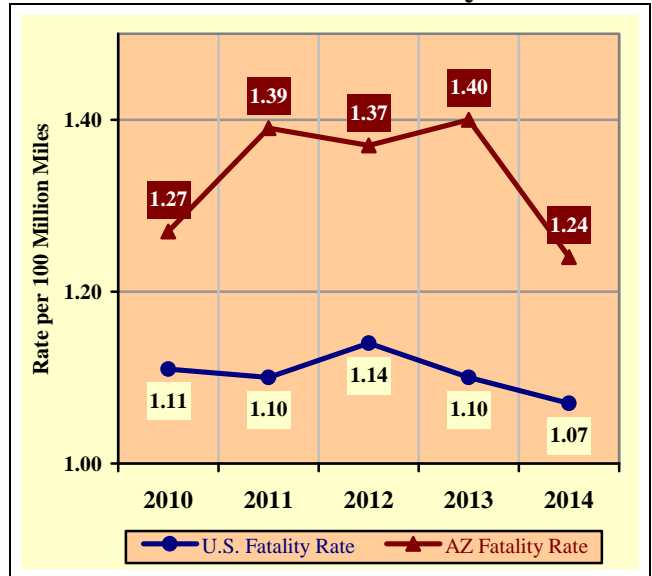
Section 1: – Highlights and Historical Trends

Chart 1 – 5
Vehicle Miles Traveled



Source: ADOT – Multimodal Planning Division – Data Bureau

Chart 1 – 6
Arizona vs. U.S. Fatality Rate



Source for U.S. Fatality Rate: www.nhtsa.gov

Chart 1 – 7
Traffic Fatalities by Geographic Region

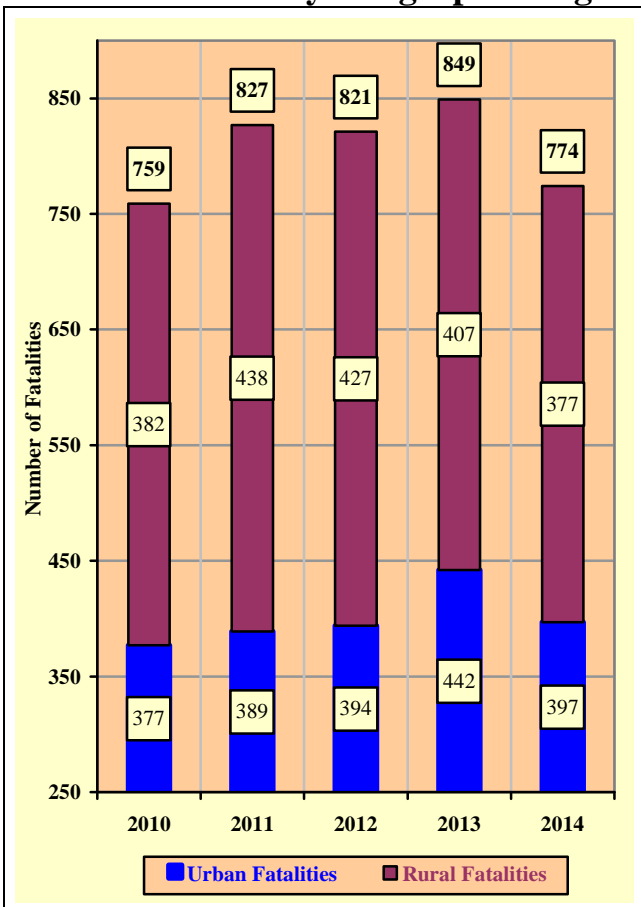
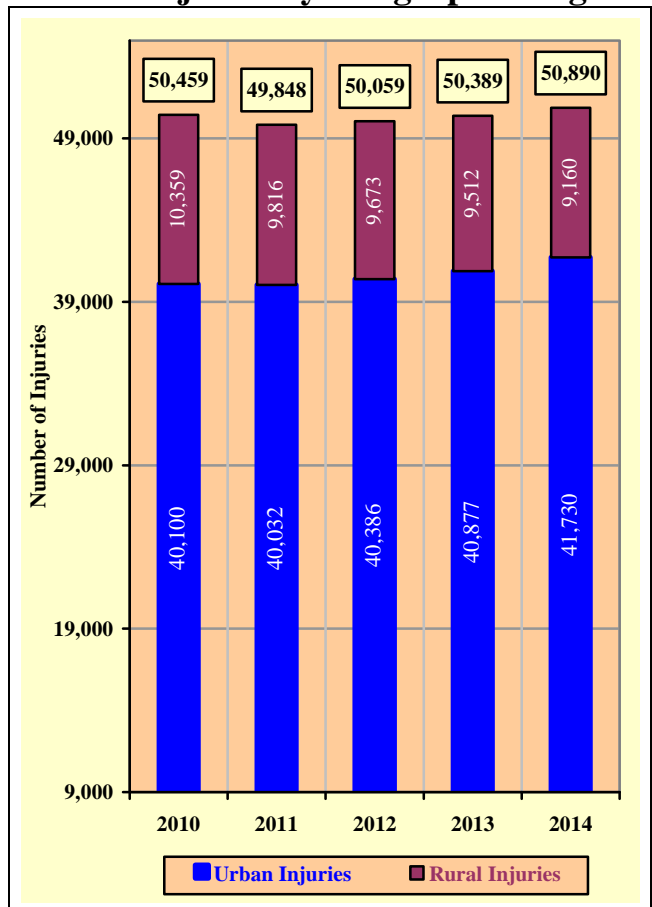


Chart 1 – 8
Traffic Injuries by Geographic Region



Section 1: – Highlights and Historical Trends

Table 1 – 9

Holiday Crash Statistics

Holidays such as Memorial Day, Labor Day, and Thanksgiving are regarded as three or four day weekend holidays for statistical purposes. Holidays such as Christmas, New Year’s Day, and the Fourth of July are celebrated on specific dates; which make the holiday period range from two to five days in length.

Holiday fatality statistics are based on fatal crashes occurring from 6:00 p.m. on the last working day prior to the holiday through 5:59 a.m. the day following the holiday period. Example: Thanksgiving fatalities are counted from Wednesday evening at 6:00 p.m. through 5:59 a.m. of the following Monday.

2014 Holidays	Beginning at 6:00 p.m.	Ending at 5:59 a.m.	Number of Days	Fatal Crashes	Persons Killed	Alcohol Related Fatal Crashes	Alcohol Related Fatalities
New Year’s Day	Tuesday	Thursday	2	3	3	2	2
	12/31/2013	1/2/2014					
Memorial Day	Friday	Tuesday	4	7	8	4	4
	5/23/2014	5/27/2014					
July 4th	Thursday	Monday	4	7	9	2	4
	7/3/2014	7/7/2014					
Labor Day	Friday	Tuesday	4	4	6	2	2
	8/29/2014	9/2/2014					
Thanksgiving Day	Wednesday	Monday	5	14	18	4	6
	11/26/2014	12/1/2014					
Christmas Day	Wednesday	Monday	5	7	8	4	5
	12/24/2014	12/29/2014					

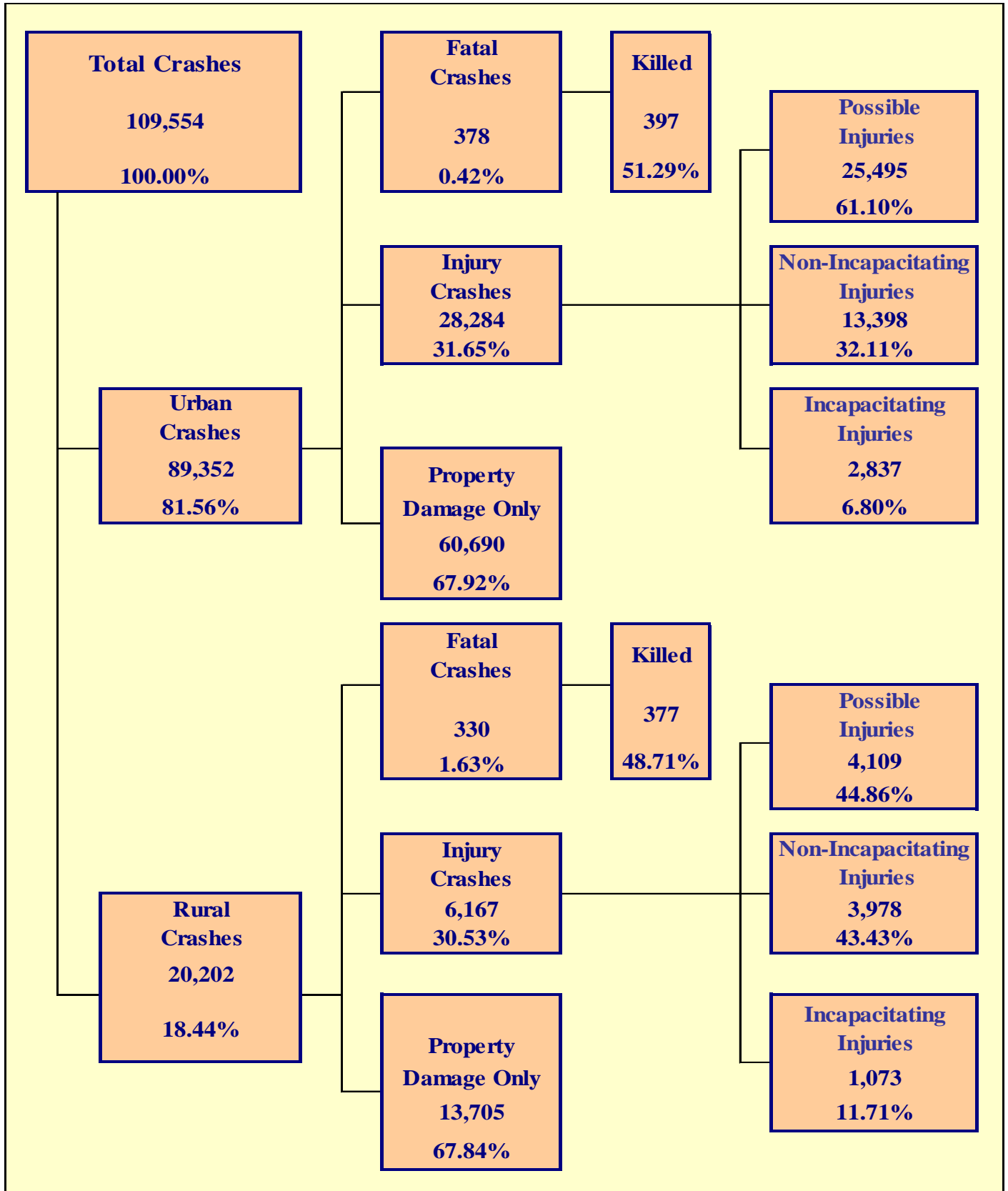
Fatal Crashes by Year	New Year’s Day	Memorial Day	July 4th	Labor Day	Thanksgiving	Christmas Day	Total
2010	9	8	14	9	11	9	60
2011	5	8	9	7	12	6	47
2012	14	7	5	15	11	4	56
2013	3	9	15	8	11	1	47
2014	3	7	7	4	14	7	42

Persons Killed	New Year’s Day	Memorial Day	July 4th	Labor Day	Thanksgiving	Christmas Day	Total
2010	10	8	16	11	12	10	67
2011	5	9	11	8	14	6	53
2012	14	8	6	18	11	4	61
2013	4	10	16	8	14	1	53
2014	3	8	9	6	18	8	52

Number of Days	New Year’s Day	Memorial Day	July 4th	Labor Day	Thanksgiving	Christmas Day	Total
2010	4	4	4	4	5	4	25
2011	4	4	4	4	5	4	25
2012	4	4	2	4	5	5	24
2013	5	4	5	4	5	2	25
2014	2	4	4	4	5	5	24

Section 2

Geographic Location



Section 2: – Geographic Location

Fatal Crashes in Arizona (708) accounted for 0.65% of all crashes, Injury Crashes (34,451) accounted for 31.45%, and Property Damage Only (PDO) Crashes (74,395) accounted for 67.91%.

**Table 2 – 1
Crash Severity by First Harmful Event Statewide**

First Harmful Event Type	Number of Crashes				Number of Persons	
	Total	Fatal	Injury	PDO	Killed	Injured
Collision with Motor Vehicle in Transport	63,751	245	18,774	44,732	282	29,081
Overturning	2,399	102	1,594	703	118	2,185
Collision with Pedestrian	944	147	722	75	148	779
Collision with Pedalcyclist	1,268	27	1,046	195	27	1,072
Collision with Animal	1,758	0	166	1,592	0	203
Collision with Fixed Object	10,329	155	3,070	7,104	165	3,780
Collision with Non-fixed Object*	4,113	7	389	3,717	7	492
Vehicle Fire or Explosion	360	1	7	352	1	12
Other Non-collision**	830	6	153	671	6	160
Unknown	23,802	18	8,530	15,254	20	13,126
TOTAL	109,554	708	34,451	74,395	774	50,890
*Includes Collision with Parked Vehicles, Trains, Railway Vehicles, and Work Zone Equipment						
**Includes Vehicle Immersion, Jackknife, and Cargo Loss or Shift						

**Table 2 – 2
Crashes by County**

County	Number of Crashes				Number of Persons	
	Total	Fatal	Injury	PDO	Killed	Injured
Apache	385	23	115	247	24	176
Cochise	1,309	9	325	975	12	441
Coconino	3,494	35	836	2,623	45	1,257
Gila	817	20	252	545	20	356
Graham	314	7	102	205	10	141
Greenlee	123	1	32	90	1	41
La Paz	365	10	120	235	11	203
Maricopa	79,476	349	24,575	54,552	368	36,527
Mohave	2,878	29	904	1,945	29	1,299
Navajo	954	31	260	663	38	402
Pima	9,367	84	3,705	5,578	88	5,397
Pinal	3,701	38	1,228	2,435	44	1,815
Santa Cruz	550	7	121	422	8	168
Yavapai	3,281	37	1,034	2,210	43	1,458
Yuma	2,540	28	842	1,670	33	1,209
TOTAL	109,554	708	34,451	74,395	774	50,890

Section 2: – Geographic Location

Table 2 – 3
Crash Severity by First Harmful Event in Urban Areas

First Harmful Event Type	Number of Crashes				Number of Persons	
	Total	Fatal	Injury	PDO	Killed	Injured
Collision with Motor Vehicle in Transport	53,544	138	15,660	37,746	151	24,005
Overturning	754	22	558	174	22	689
Collision with Pedestrian	807	112	627	68	113	672
Collision with Pedalcyclist	1,120	20	929	171	20	944
Collision with Animal	301	0	30	271	0	34
Collision with Fixed Object	6,638	75	1,936	4,627	80	2,302
Collision with Non-fixed Object*	3,008	5	271	2,732	5	342
Vehicle Fire or Explosion	121	1	2	118	1	4
Other Non-collision**	424	1	97	326	1	99
Unknown	22,635	4	8,174	14,457	4	12,639
TOTAL	89,352	378	28,284	60,690	397	41,730
*Includes Collision with Parked Vehicles, Trains, Railway Vehicles, and Work Zone Equipment						
**Includes Vehicle Immersion, Jackknife, and Cargo Loss or Shift						

Table 2 – 4
Crash Severity by First Harmful Event in Rural Areas

First Harmful Event Type	Number of Crashes				Number of Persons	
	Total	Fatal	Injury	PDO	Killed	Injured
Collision with Motor Vehicle in Transport	10,207	107	3,114	6,986	131	5,076
Overturning	1,645	80	1,036	529	96	1,496
Collision with Pedestrian	137	35	95	7	35	107
Collision with Pedalcyclist	148	7	117	24	7	128
Collision with Animal	1,457	0	136	1,321	0	169
Collision with Fixed Object	3,691	80	1,134	2,477	85	1,478
Collision with Non-fixed Object*	1,105	2	118	985	2	150
Vehicle Fire or Explosion	239	0	5	234	0	8
Other Non-collision**	406	5	56	345	5	61
Unknown	1,167	14	356	797	16	487
TOTAL	20,202	330	6,167	13,705	377	9,160
*Includes Collision with Parked Vehicles, Trains, Railway Vehicles, and Work Zone Equipment						
**Includes Vehicle Immersion, Jackknife, and Cargo Loss or Shift						

While Urban Crashes in Arizona (89,352) accounted for 81.56% of all crashes, they accounted for 53.39% of all Fatal Crashes (378) occurring in 2014.

While Rural Crashes in Arizona (20,202) accounted for 18.44% of all crashes, they accounted for 46.61% of all Fatal Crashes (330) occurring in 2014.

Section 2: – Geographic Location

Table 2 – 5

Analysis by Jurisdiction

COUNTIES Cities	Number of Crashes				No. of Persons		Alcohol Related		
	Total	Fatal	Injury	PDO	Killed	Injured	Crashes	Killed	Injured
Apache County	335	22	102	211	23	158	29	3	33
Eagar	25	0	6	19	0	11	1	0	0
St. Johns	11	1	2	8	1	2	0	0	0
Springerville	14	0	5	9	0	5	0	0	0
TOTAL	385	23	115	247	24	176	30	3	33

Cochise County	534	9	134	391	12	194	23	5	18
Benson	82	0	24	58	0	27	3	0	3
Bisbee	1	0	0	1	0	0	0	0	0
Douglas	113	0	23	90	0	27	4	0	1
Huachuca City	6	0	3	3	0	6	1	0	2
Sierra Vista	539	0	136	403	0	180	23	0	14
Tombstone	0	0	0	0	0	0	0	0	0
Willcox	34	0	5	29	0	7	1	0	0
TOTAL	1,309	9	325	975	12	441	55	5	38

Coconino County	1,255	30	334	891	40	580	64	13	75
Flagstaff	1,811	4	420	1,387	4	563	73	2	42
Fredonia	0	0	0	0	0	0	0	0	0
Williams	123	0	14	109	0	20	2	0	2
Page	102	1	23	78	1	37	13	0	5
Sedona	203	0	45	158	0	57	4	0	1
TOTAL	3,494	35	836	2,623	45	1,257	156	15	125

Gila County	514	17	167	330	17	242	32	4	28
Globe	98	2	33	63	2	41	6	1	3
Hayden	0	0	0	0	0	0	0	0	0
Miami	13	1	5	7	1	9	0	0	0
Payson	192	0	47	145	0	64	14	0	11
Winkelman	0	0	0	0	0	0	0	0	0
TOTAL	817	20	252	545	20	356	52	5	42

Graham County	136	6	35	95	9	56	11	2	8
Pima	2	0	1	1	0	1	0	0	0
Safford	127	1	47	79	1	61	10	1	8
Thatcher	49	0	19	30	0	23	2	0	1
TOTAL	314	7	102	205	10	141	23	3	17

Greenlee County	70	0	21	49	0	26	3	0	0
Clifton	53	1	11	41	1	15	6	0	2
Duncan	0	0	0	0	0	0	0	0	0
TOTAL	123	1	32	90	1	41	9	0	2

Section 2: – Geographic Location

Table 2 – 5

Analysis by Jurisdiction

COUNTIES Cities	Number of Crashes				No. of Persons		Alcohol Related		
	Total	Fatal	Injury	PDO	Killed	Injured	Crashes	Killed	Injured
La Paz County	293	9	104	180	10	176	11	0	13
Parker	38	0	11	27	0	19	1	0	0
Quartzite	34	1	5	28	1	8	0	0	0
TOTAL	365	10	120	235	11	203	12	0	13

Maricopa County	5,564	62	1,776	3,726	67	2,640	224	22	173
Avondale	1,087	1	316	770	1	474	33	0	14
Buckeye	570	4	155	411	4	230	20	1	8
Cave Creek	58	1	22	35	1	29	2	0	4
Chandler	4,018	11	1,184	2,823	11	1,657	155	3	83
El Mirage	368	0	109	259	0	158	10	0	3
Gila Bend	37	0	15	22	0	28	4	0	5
Gilbert	2,849	7	659	2,183	9	961	96	6	40
Glendale	4,919	16	1,443	3,460	16	2,143	198	4	129
Goodyear	868	2	274	592	2	410	31	0	17
Mesa	6,780	23	1,993	4,764	24	2,772	300	5	172
Paradise Valley	206	2	69	135	3	100	4	2	3
Peoria	2,215	11	666	1,538	14	969	92	6	69
Phoenix	35,802	172	11,596	24,034	176	17,860	1,363	71	855
Scottsdale	4,040	10	1,347	2,683	12	1,917	247	9	138
Surprise	1,078	0	265	813	0	405	41	0	33
Tempe	7,749	20	2,341	5,388	21	3,285	286	7	217
Tolleson	414	0	115	299	0	159	13	0	5
Wickenburg	91	2	21	68	2	28	3	0	1
Youngtown	34	1	11	22	1	16	2	0	0
Guadalupe	302	1	81	220	1	101	11	0	2
Litchfield Park	54	0	23	31	0	30	3	0	3
Queen Creek	213	1	48	164	1	92	7	1	6
Fountain Hills	131	1	38	92	1	55	12	0	12
Carefree	29	1	8	20	1	8	5	0	1
TOTAL	79,476	349	24,575	54,552	368	36,527	3,162	137	1,993

Mohave County	1,196	21	376	799	21	572	78	5	45
Kingman	544	3	172	369	3	224	19	1	8
Lake Havasu City	564	0	179	385	0	242	48	0	23
Bullhead City	559	4	171	384	4	252	42	0	21
Colorado City	15	1	6	8	1	9	0	0	0
TOTAL	2,878	29	904	1,945	29	1,299	187	6	97

Section 2: – Geographic Location

Table 2 – 5

Analysis by Jurisdiction

COUNTIES Cities	Number of Crashes				No. of Persons		Alcohol Related		
	Total	Fatal	Injury	PDO	Killed	Injured	Crashes	Killed	Injured
Navajo County	499	24	155	320	30	243	33	7	22
Holbrook	65	1	15	49	1	20	6	1	2
Show Low	179	1	46	132	1	71	5	0	2
Snowflake	40	2	6	32	3	11	5	0	2
Taylor	30	1	7	22	1	11	0	0	0
Winslow	44	1	11	32	1	13	4	1	1
Pinetop-Lakeside	97	1	20	76	1	33	1	0	0
TOTAL	954	31	260	663	38	402	54	9	29

Pima County	3,312	36	1,048	2,228	39	1,469	190	19	112
South Tucson	78	0	30	48	0	48	3	0	3
Tucson	4,508	39	2,272	2,197	40	3,383	407	17	294
Sahuarita	218	1	66	151	1	91	5	1	1
Oro Valley	484	2	118	364	2	161	21	1	14
Marana	767	6	171	590	6	245	15	1	7
TOTAL	9,367	84	3,705	5,578	88	5,397	641	39	431

Pinal County	1,815	22	618	1,175	28	939	91	8	82
Casa Grande	816	5	256	555	5	339	38	3	27
Coolidge	143	1	44	98	1	69	4	0	4
Eloy	129	1	43	85	1	60	8	0	7
Florence	83	2	32	49	2	47	5	1	2
Kearny	4	0	2	2	0	2	0	0	0
Mammoth	0	0	0	0	0	0	0	0	0
Superior	18	0	6	12	0	7	2	0	1
Apache Junction	431	5	147	279	5	230	21	3	11
Maricopa	262	2	80	180	2	122	20	1	7
TOTAL	3,701	38	1,228	2,435	44	1,815	189	16	141

Santa Cruz County	247	6	70	171	7	96	12	3	8
Nogales	303	1	51	251	1	72	4	0	3
Patagonia	0	0	0	0	0	0	0	0	0
TOTAL	550	7	121	422	8	168	16	3	11

Yavapai County	1,525	26	489	1,010	31	708	93	8	54
Clarkdale	21	0	1	20	0	1	3	0	0
Cottonwood	265	0	81	184	0	115	9	0	3
Jerome	8	0	1	7	0	1	1	0	0
Prescott	707	3	232	472	3	301	23	1	15
Prescott Valley	485	4	158	323	5	223	11	1	4
Chino Valley	128	0	41	87	0	59	6	0	6
Camp Verde	121	4	29	88	4	47	8	0	5
Dewey-Humboldt	21	0	2	19	0	3	4	0	2
TOTAL	3,281	37	1,034	2,210	43	1,458	158	10	89

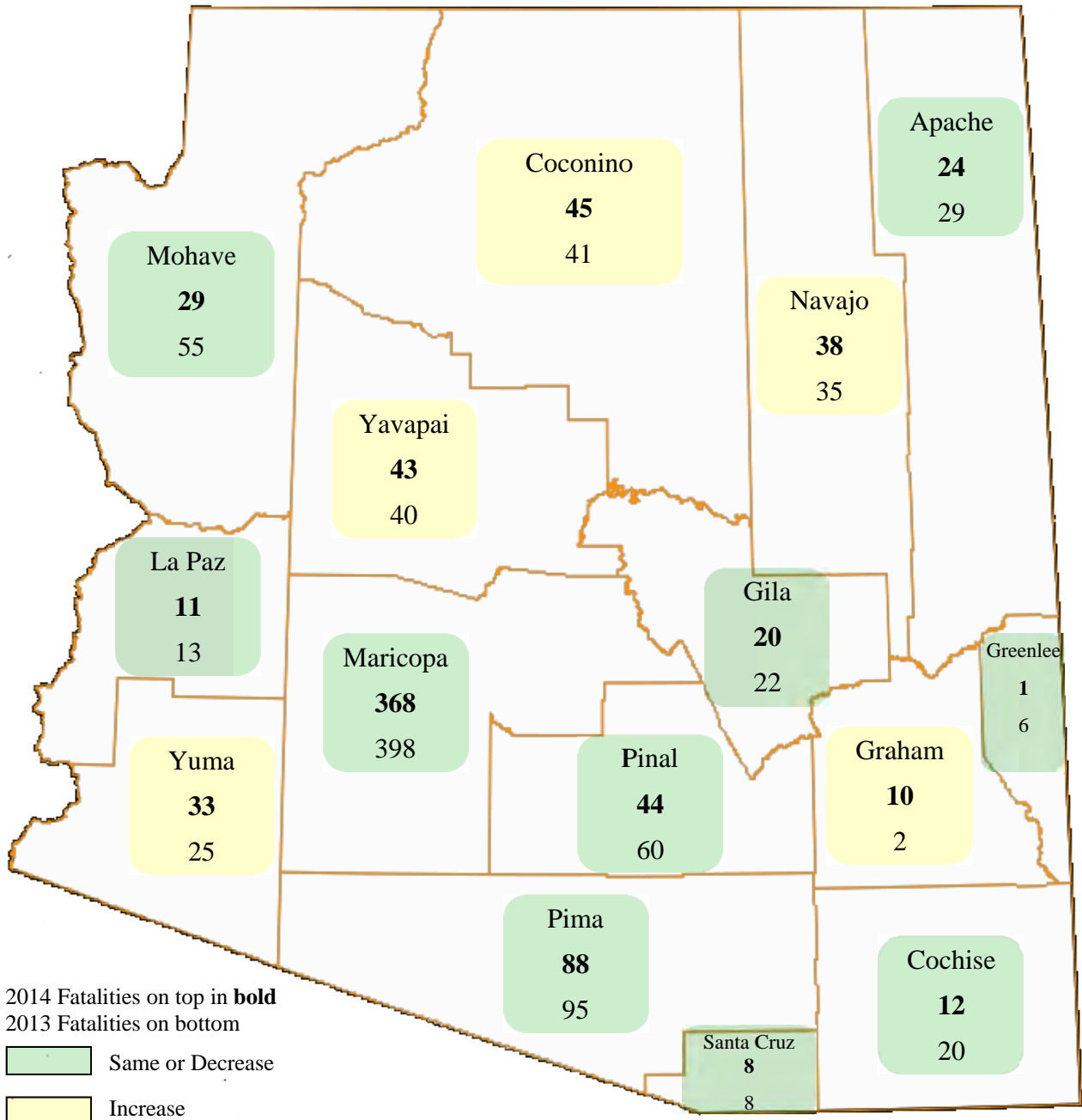
Section 2: – Geographic Location

Table 2 – 5
Analysis by Jurisdiction

COUNTIES Cities	Number of Crashes				No. of Persons		Alcohol Related		
	Total	Fatal	Injury	PDO	Killed	Injured	Crashes	Killed	Injured
Yuma County	696	16	193	487	18	278	38	7	24
Somerton	34	0	9	25	0	17	0	0	0
Yuma	1,651	11	611	1,029	12	877	97	7	58
Wellton	14	0	4	10	0	6	1	0	2
San Luis	145	1	25	119	3	31	7	0	1
TOTAL	2,540	28	842	1,670	33	1,209	143	14	85

Note: Some individual city data may be incomplete due to lack of timely reporting or changes in crash reporting procedures.

Total Fatalities by County for 2013 and 2014



Section 2: – Geographic Location

Chart 2 – 1

Urban and Rural Crashes by Day of Week

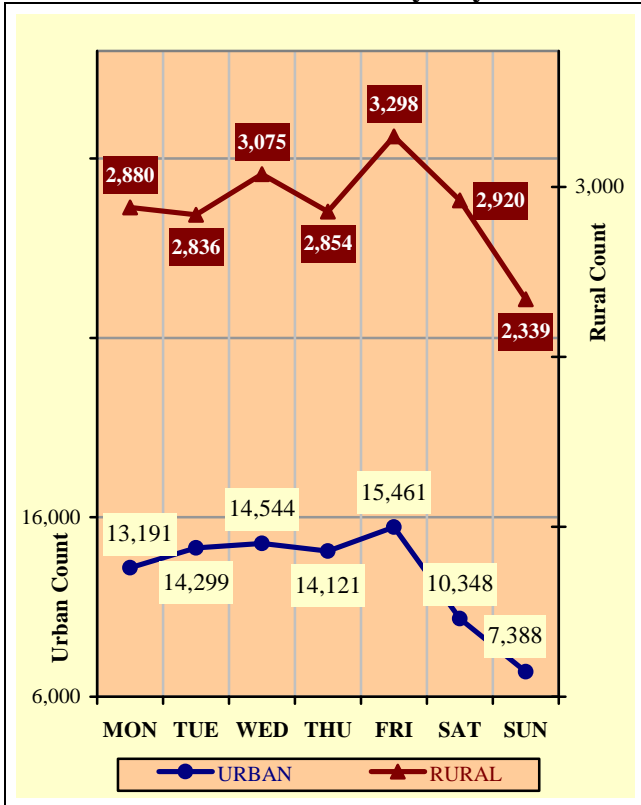


Chart 2 – 2

Urban and Rural Fatal Crashes by Day of Week

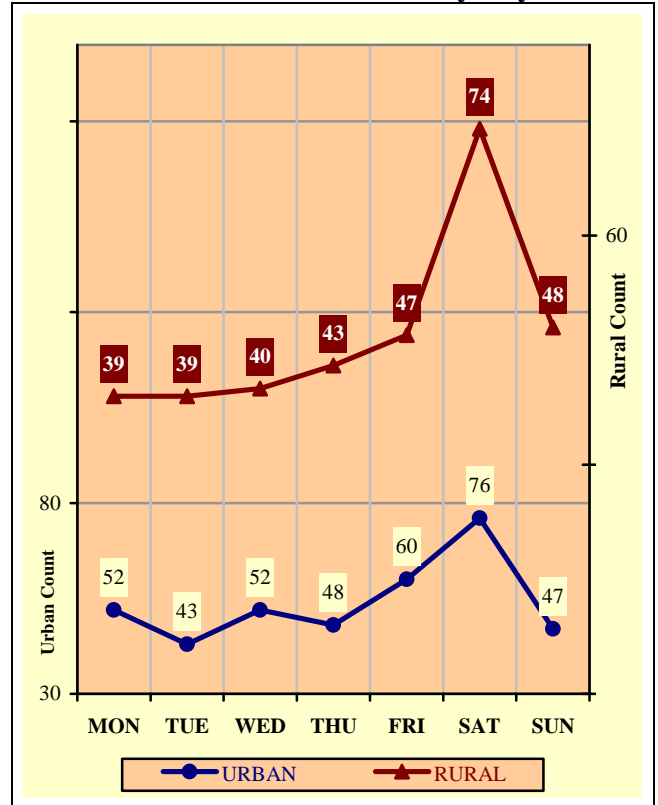
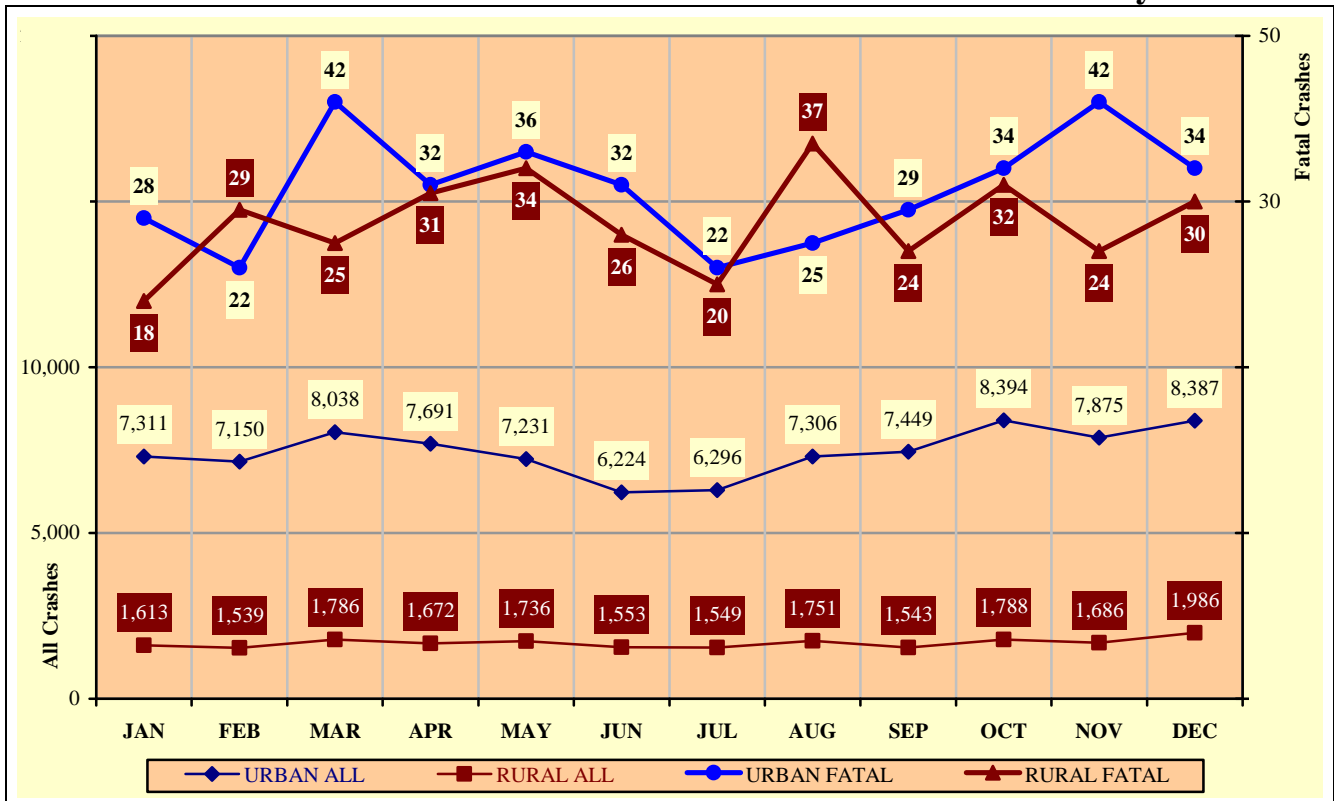


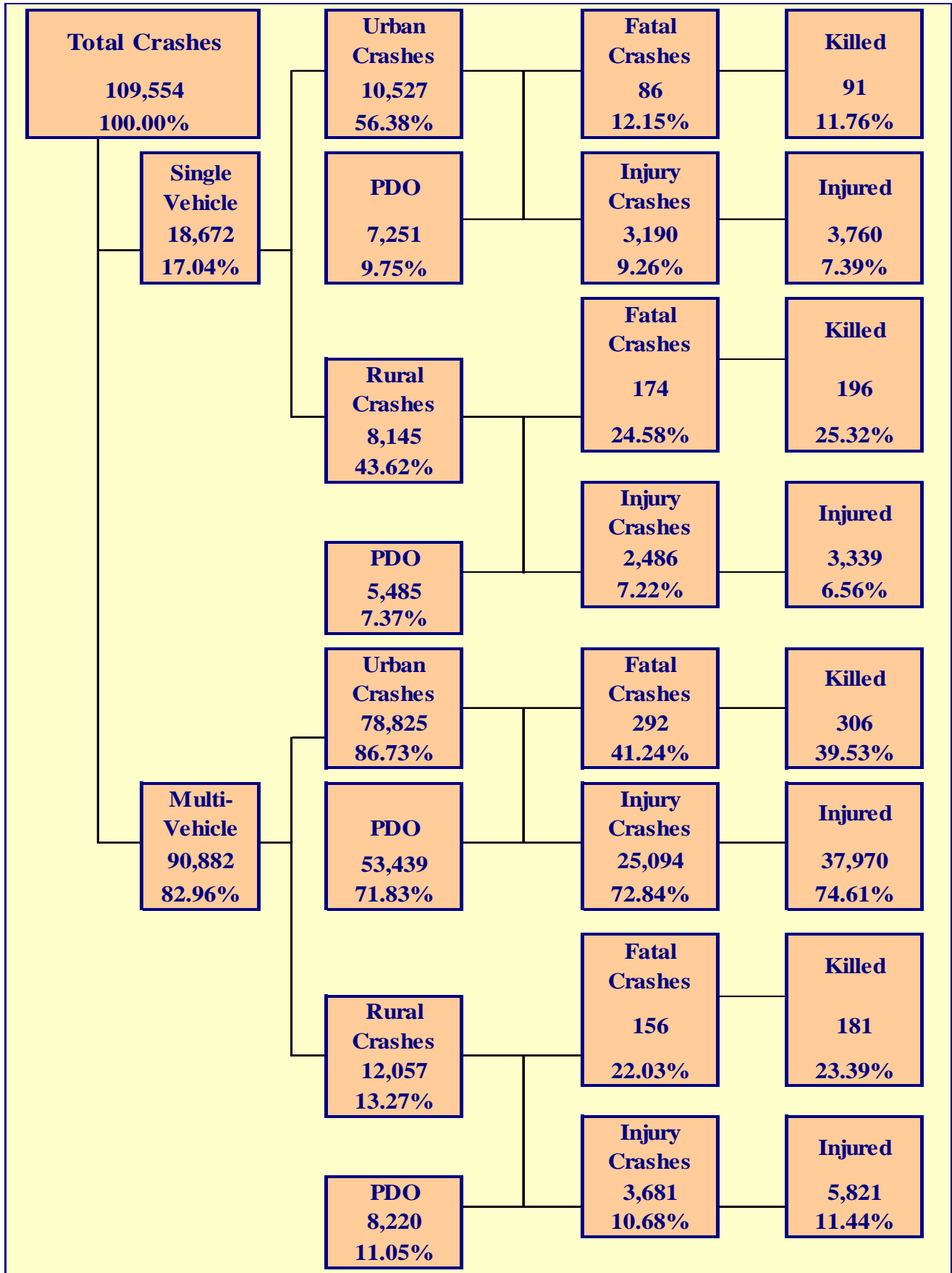
Chart 2 – 3

All Urban and Rural Crashes vs. Urban and Rural Fatal Crashes by Month



Section 3

Crash Descriptions



Section 3: – Crash Descriptions

Table 3 – 1
Manner of Collision in Multi-Vehicle Crashes

Manner of Collision Type	Number of Crashes							
	Total	Percent of Total Crashes	Fatal	Percent of Fatal Crashes	Injury	Percent of Injury Crashes	PDO	Percent of PDO Crashes
Angle	14,726	16.20%	64	14.29%	5,784	20.10%	8,878	14.40%
Left Turn	13,571	14.93%	59	13.17%	5,653	19.65%	7,859	12.75%
Rear End	41,813	46.01%	48	10.71%	12,595	43.77%	29,170	47.31%
Head-On	1,602	1.76%	45	10.04%	770	2.68%	787	1.28%
Sideswipe (same)	12,009	13.21%	12	2.68%	1,600	5.56%	10,397	16.86%
Sideswipe (opposite)	1,261	1.39%	9	2.01%	352	1.22%	900	1.46%
Rear to Side	758	0.83%	0	0.00%	64	0.22%	694	1.13%
Rear to Rear	252	0.28%	0	0.00%	51	0.18%	201	0.33%
Other	4,129	4.54%	207	46.21%	1,759	6.11%	2,163	3.51%
Unknown	761	0.84%	4	0.89%	147	0.51%	610	0.99%
TOTAL	90,882	100.00%	448	100.00%	28,775	100.00%	61,659	100.00%

Table 3 – 2
Lighting Conditions

Type of Lighting Conditions	Number of Crashes				Number of Persons	
	Total	Fatal	Injury	PDO	Killed	Injured
Daylight	78,645	311	24,751	53,583	336	36,418
Dawn	1,872	23	606	1,243	26	832
Dusk	3,323	25	1,028	2,270	25	1,541
Dark - Lighted	18,977	149	6,193	12,635	153	9,326
Dark - Not Lighted	6,152	136	1,782	4,234	164	2,638
Dark - Unknown Lighting	585	64	91	430	70	135
TOTAL	109,554	708	34,451	74,395	774	50,890

Table 3 – 3
Weather Conditions

Type of Weather Conditions	Number of Crashes				Number of Persons	
	Total	Fatal	Injury	PDO	Killed	Injured
Clear	95,671	503	30,294	64,874	556	44,731
Cloudy	9,413	61	2,958	6,394	62	4,357
Sleet/Hail	45	1	19	25	1	29
Rain	3,152	21	917	2,214	23	1,339
Snow	339	0	61	278	0	91
Severe Crosswinds	107	1	32	74	1	52
Blowing Sand, Soil, Dirt	79	2	27	50	3	48
Fog, Smog, Smoke	41	1	12	28	1	21
Blowing Snow	9	0	3	6	0	5
Other	33	0	12	21	0	20
Unknown	665	118	116	431	127	197
TOTAL	109,554	708	34,451	74,395	774	50,890

Section 3: – Crash Descriptions

Table 3 – 4
Road Surface Conditions

Type of Road Surface Condition	Number of Drivers				Number of Persons	
	Total	In Fatal Crashes	In Injury Crashes	In PDO Crashes	Killed	Injured
Dry	199,311	836	64,082	134,393	604	48,574
Wet	6,867	34	2,008	4,825	26	1,656
Snow	434	0	73	361	0	64
Slush	67	0	23	44	0	22
Ice/Frost	181	4	40	137	2	42
Water (standing or moving)	159	3	48	108	3	42
Sand	60	1	30	29	1	28
Mud, Dirt, Gravel	466	15	177	274	16	197
Oil	24	0	13	11	0	13
Other	69	0	26	43	0	17
Unknown	2,798	158	520	2,120	122	235
TOTAL	210,436	1,051	67,040	142,345	774	50,890

Table 3 – 5
Roadway Grade

Type of Roadway Grade	Number of Drivers				Number of Persons	
	Total	In Fatal Crashes	In Injury Crashes	In PDO Crashes	Killed	Injured
Level	193,230	767	61,629	130,834	559	46,407
Downhill	7,448	67	2,488	4,893	55	2,251
Uphill	6,094	38	1,989	4,067	27	1,620
Hillcrest	510	8	202	300	5	185
Sag/Dip/Bottom	200	7	81	112	3	81
Unknown	2,954	164	651	2,139	125	346
TOTAL	210,436	1,051	67,040	142,345	774	50,890

Table 3 – 6
Roadway Alignment

Type of Roadway Alignment	Number of Drivers				Number of Persons	
	Total	In Fatal Crashes	In Injury Crashes	In PDO Crashes	Killed	Injured
Straight	149,577	772	46,165	102,640	550	34,169
Curve Left	4,570	62	1,501	3,007	56	1,452
Curve Right	4,975	51	1,512	3,412	40	1,441
Unknown	51,314	166	17,862	33,286	128	13,828
TOTAL	210,436	1,051	67,040	142,345	774	50,890

Section 3: – Crash Descriptions

Chart 3 – 1

All Crashes vs. Fatal Crashes by Time of Day - Weekdays

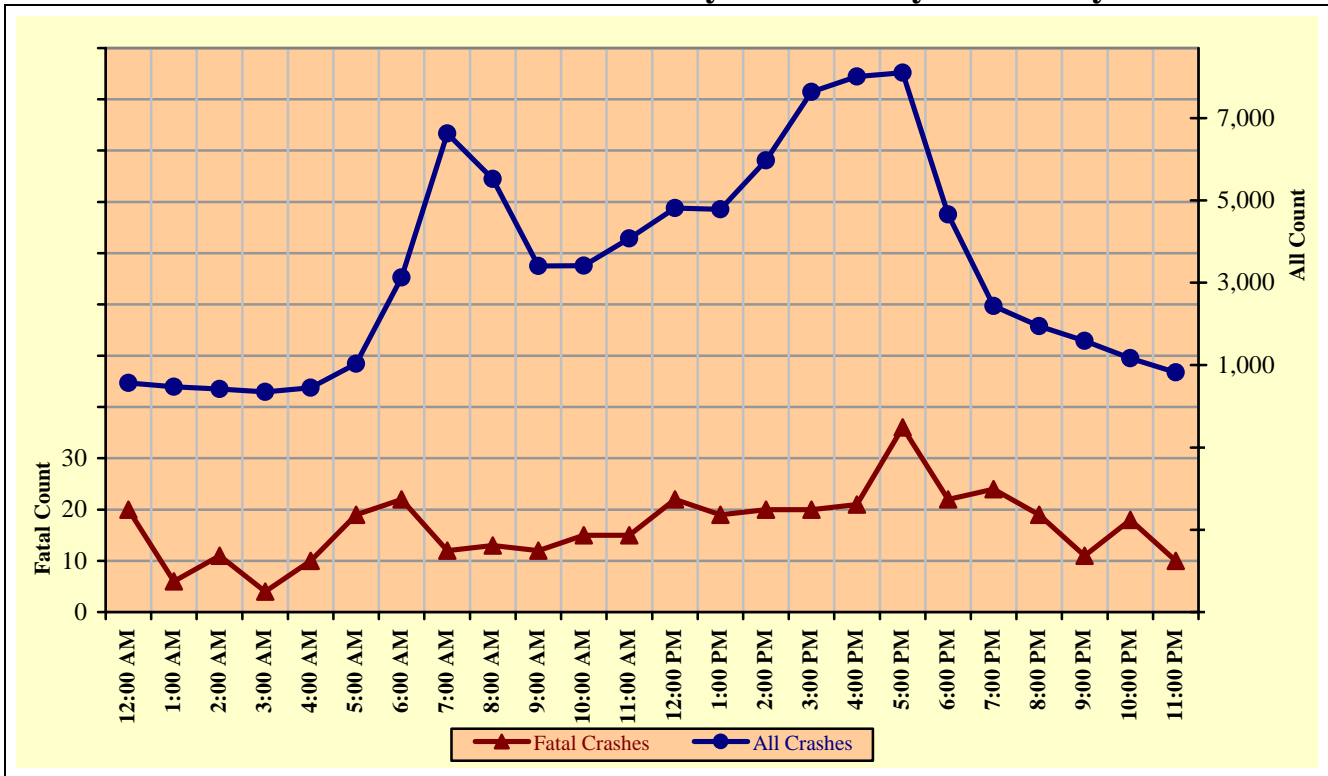
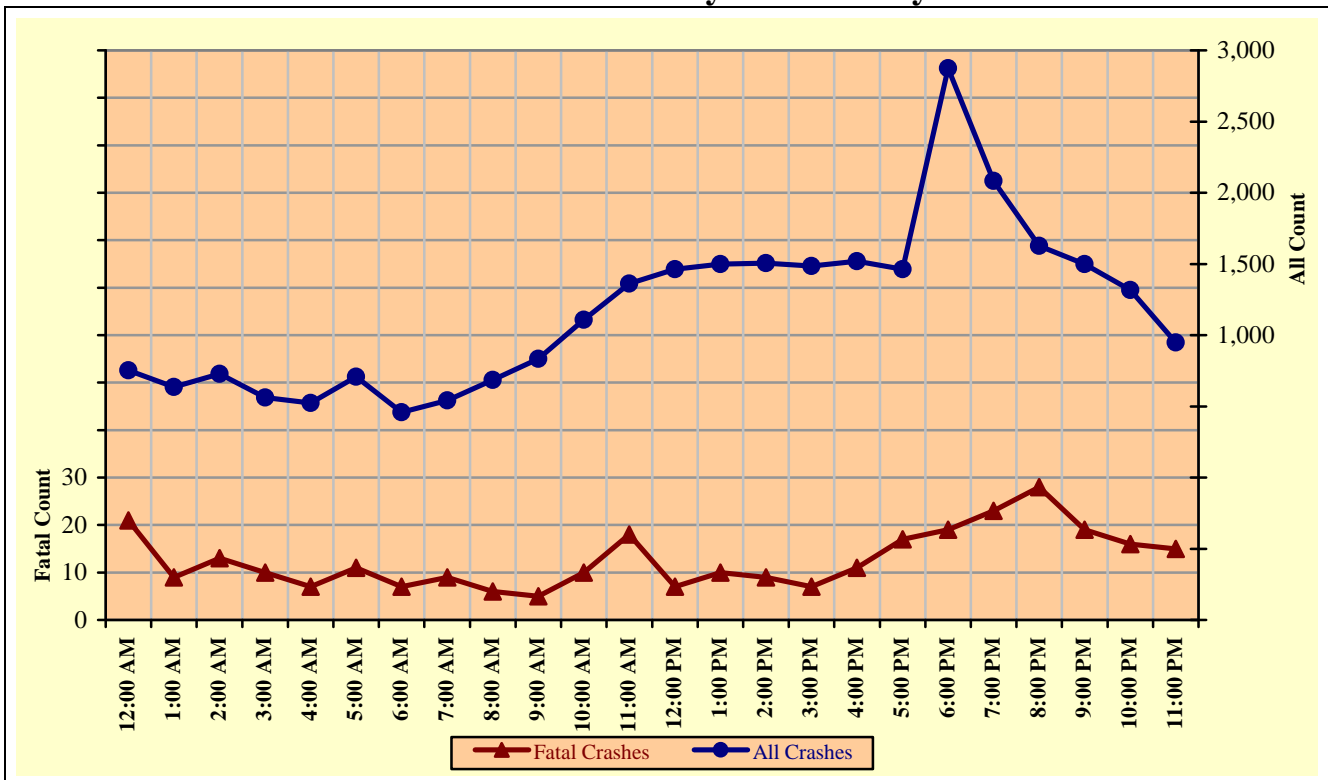


Chart 3 – 2

All Crashes vs. Fatal Crashes by Time of Day - Weekends



Section 3: – Crash Descriptions

Chart 3 – 3
Crashes by Day of Week

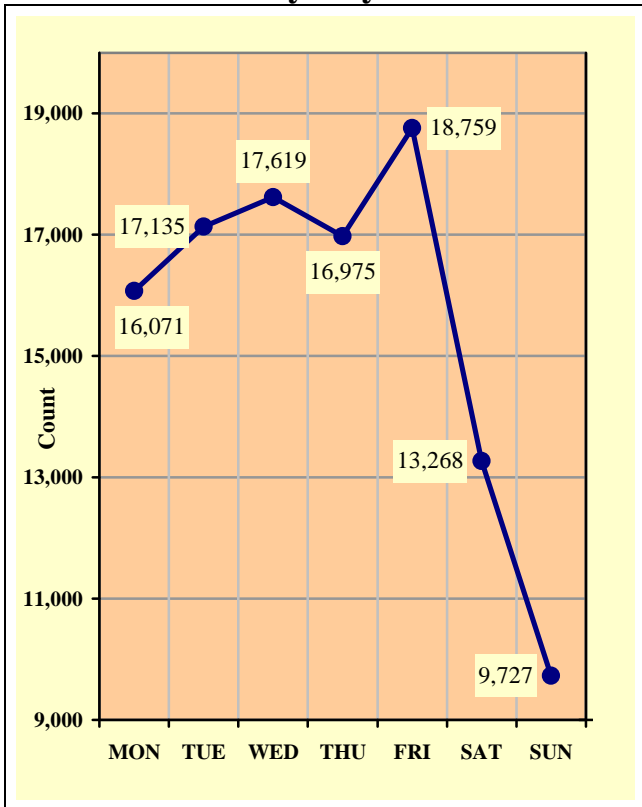


Chart 3 – 4
Fatal Crashes by Day of Week

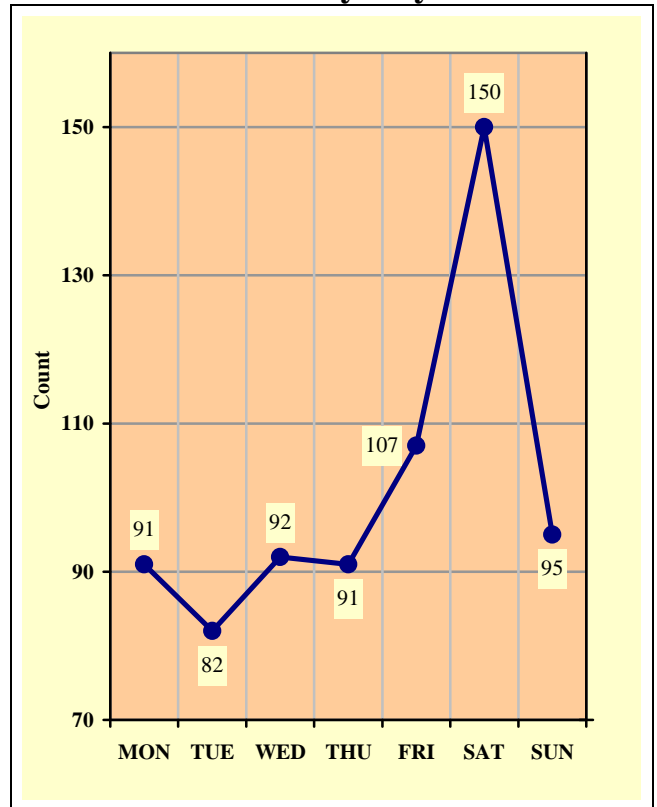
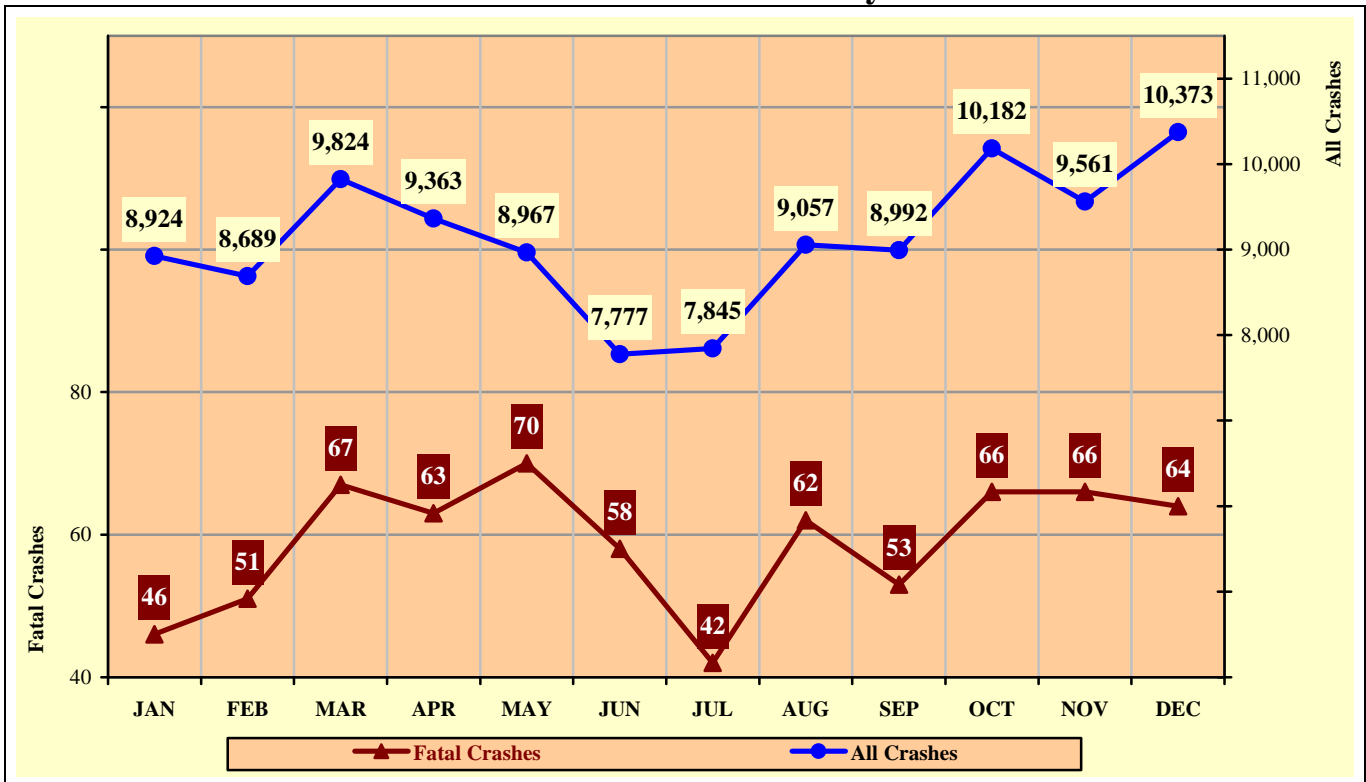


Chart 3 – 5
All Crashes vs. Fatal Crashes by Month



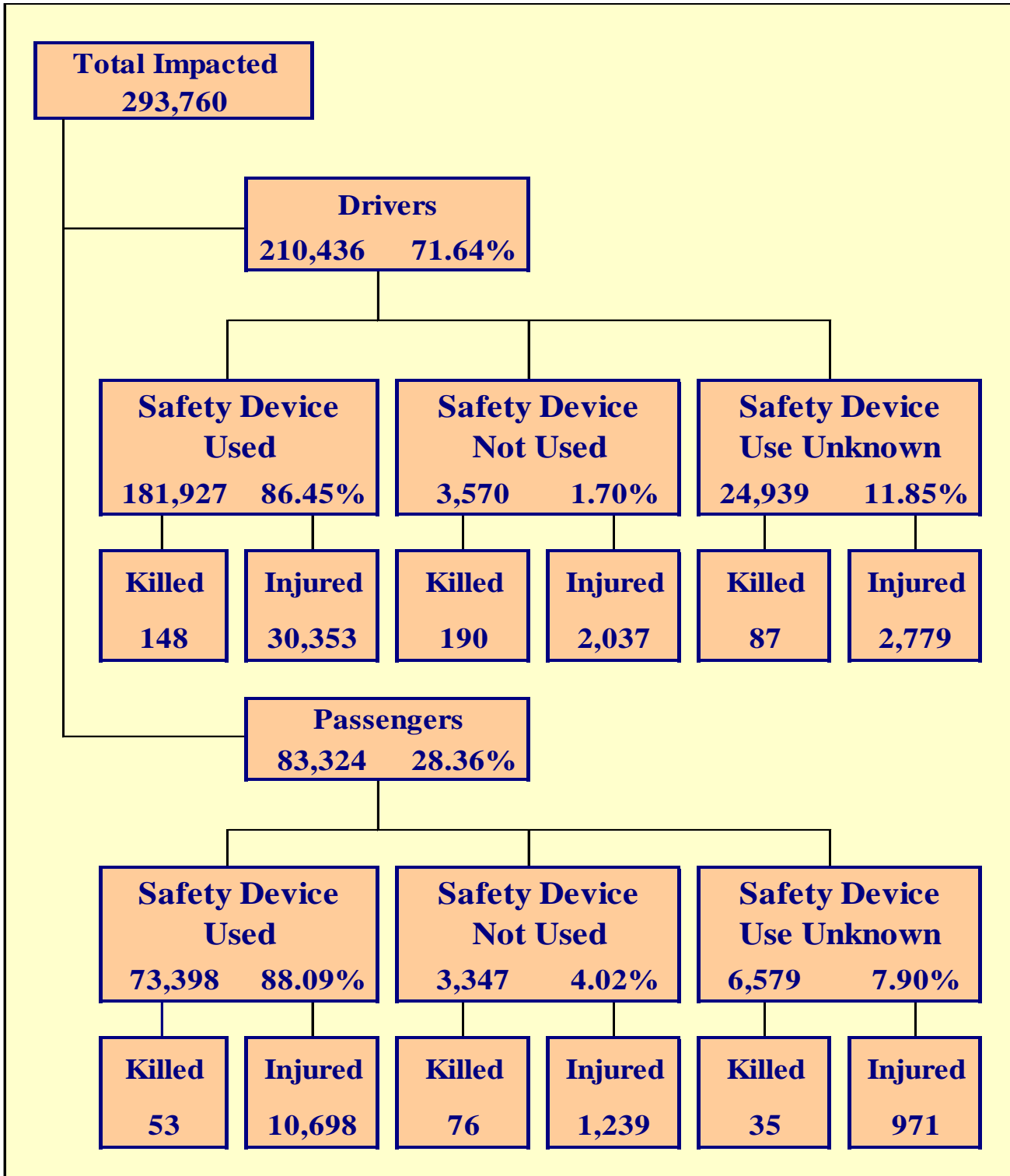
Section 3: – Crash Descriptions

**Table 3 – 7
Crashes by Hour and Day of Week**

Hour Beginning	Total Crashes		Monday		Tuesday		Wednesday		Thursday		Friday		Saturday		Sunday		Weekdays		Weekends	
	All	Fatal	All	Fatal	All	Fatal	All	Fatal	All	Fatal	All	Fatal	All	Fatal	All	Fatal	All	Fatal	All	Fatal
12:00 AM	1,323	41	138	7	123	6	154	0	131	8	162	6	303	10	312	4	570	20	753	21
1:00 AM	1,111	15	115	2	91	0	122	2	120	2	141	2	267	2	255	5	474	6	637	9
2:00 AM	1,151	24	112	0	88	3	94	3	106	2	134	3	287	11	330	2	422	11	729	13
3:00 AM	908	14	88	5	79	0	89	2	75	0	104	2	242	4	231	1	347	4	561	10
4:00 AM	971	17	111	1	111	3	112	1	117	1	107	5	207	4	206	2	447	10	524	7
5:00 AM	1,745	30	308	5	235	6	296	2	274	5	232	6	221	3	179	3	1,037	19	708	11
6:00 AM	3,583	29	620	5	660	4	683	8	646	2	516	3	256	3	202	4	3,125	22	458	7
7:00 AM	7,163	21	1,314	2	1,400	0	1,479	4	1,345	3	1,083	3	318	6	224	3	6,621	12	542	9
8:00 AM	6,207	19	1,042	3	1,206	2	1,263	5	1,080	3	931	0	434	3	251	3	5,522	13	685	6
9:00 AM	4,239	17	662	1	670	2	741	2	656	1	676	6	522	2	312	3	3,405	12	834	5
10:00 AM	4,521	25	659	4	696	0	696	4	677	5	686	2	670	7	437	3	3,414	15	1,107	10
11:00 AM	5,433	33	789	3	809	3	799	4	796	2	878	3	823	7	539	11	4,071	15	1,362	18
12:00 PM	6,275	29	920	4	882	3	976	2	965	8	1,069	5	850	3	613	4	4,812	22	1,463	7
1:00 PM	6,278	29	861	2	924	6	965	5	908	4	1,121	2	903	6	596	4	4,779	19	1,499	10
2:00 PM	7,476	29	1,084	4	1,177	4	1,207	4	1,095	6	1,407	2	855	4	651	5	5,970	20	1,506	9
3:00 PM	9,122	27	1,412	4	1,552	5	1,438	6	1,400	4	1,834	1	873	5	613	2	7,636	20	1,486	7
4:00 PM	9,527	32	1,457	6	1,592	3	1,583	5	1,637	1	1,740	6	868	9	650	2	8,009	21	1,518	11
5:00 PM	9,566	53	1,516	9	1,733	9	1,610	2	1,622	8	1,622	8	835	11	628	6	8,103	36	1,463	17
6:00 PM	7,529	41	1,065	4	1,207	6	1,216	6	1,166	6	1,324	6	876	8	675	5	4,654	22	2,875	19
7:00 PM	4,518	47	579	6	604	4	593	11	658	3	876	5	665	11	543	7	2,434	24	2,084	23
8:00 PM	3,568	47	430	7	472	4	517	4	523	4	642	11	567	11	417	6	1,942	19	1,626	28
9:00 PM	3,086	30	339	2	387	1	431	3	430	5	581	10	553	4	365	5	1,587	11	1,499	19
10:00 PM	2,485	34	261	2	255	5	324	4	329	7	527	6	500	8	289	2	1,169	18	1,316	16
11:00 PM	1,769	25	189	3	182	3	231	3	219	1	366	4	373	8	209	3	821	10	948	15
TOTAL	109,554	708	16,071	91	17,135	82	17,619	92	16,975	91	18,759	107	13,268	150	9,727	95	81,371	401	28,183	307

Crashes during Weekends accounted for 25.73% of all crashes and 43.36% of Fatal Crashes.

Crashes during Weekdays accounted for 74.27% of all crashes and 56.64% of Fatal Crashes.



Section 4: – Safety Devices

**Table 4 – 1
Child Safety Device Usage (less than five years old)**

Severity of Injury	Safety Device Used	Percent of Safety Device Used	Safety Device Not Used	Percent of Safety Device Not Used	Safety Device Use Unknown	Percent of Unknown
No Injury	10,090	90.79%	113	71.07%	284	75.13%
Unknown Injury	86	0.77%	1	0.63%	64	16.93%
Possible Injury	694	6.24%	18	11.32%	21	5.56%
Non-Incapacitating Injury	197	1.77%	15	9.43%	7	1.85%
Incapacitating Injury	42	0.38%	10	6.29%	0	0.00%
Fatal Injury	5	0.04%	2	1.26%	2	0.53%
TOTALS	11,114	100.00%	159	100.00%	378	100.00%

**Table 4 – 2
Driver Safety Device Usage**

Severity of Injury	Safety Device Used	Percent of Safety Device Used	Safety Device Not Used	Percent of Safety Device Not Used	Safety Device Use Unknown	Percent of Unknown
No Injury	150,628	82.80%	1,296	36.30%	12,245	49.10%
Unknown Injury	798	0.44%	47	1.32%	9,828	39.41%
Possible Injury	18,711	10.28%	564	15.80%	1,246	5.00%
Non-Incapacitating Injury	10,020	5.51%	966	27.06%	1,138	4.56%
Incapacitating Injury	1,622	0.89%	507	14.20%	395	1.58%
Fatal Injury	148	0.08%	190	5.32%	87	0.35%
TOTALS	181,927	100.00%	3,570	100.00%	24,939	100.00%

**Table 4 – 3
Passenger Safety Device Usage**

Severity of Injury	Safety Device Used	Percent of Safety Device Used	Safety Device Not Used	Percent of Safety Device Not Used	Safety Device Use Unknown	Percent of Unknown
No Injury	62,271	84.84%	1,974	58.98%	4,599	69.90%
Unknown Injury	376	0.51%	58	1.73%	974	14.80%
Possible Injury	7,110	9.69%	437	13.06%	503	7.65%
Non-Incapacitating Injury	3,024	4.12%	563	16.82%	359	5.46%
Incapacitating Injury	564	0.77%	239	7.14%	109	1.66%
Fatal Injury	53	0.07%	76	2.27%	35	0.53%
TOTALS	73,398	100.00%	3,347	100.00%	6,579	100.00%

Section 4: – Safety Devices

**Table 4 – 4
Driver Safety Device Usage by Gender**

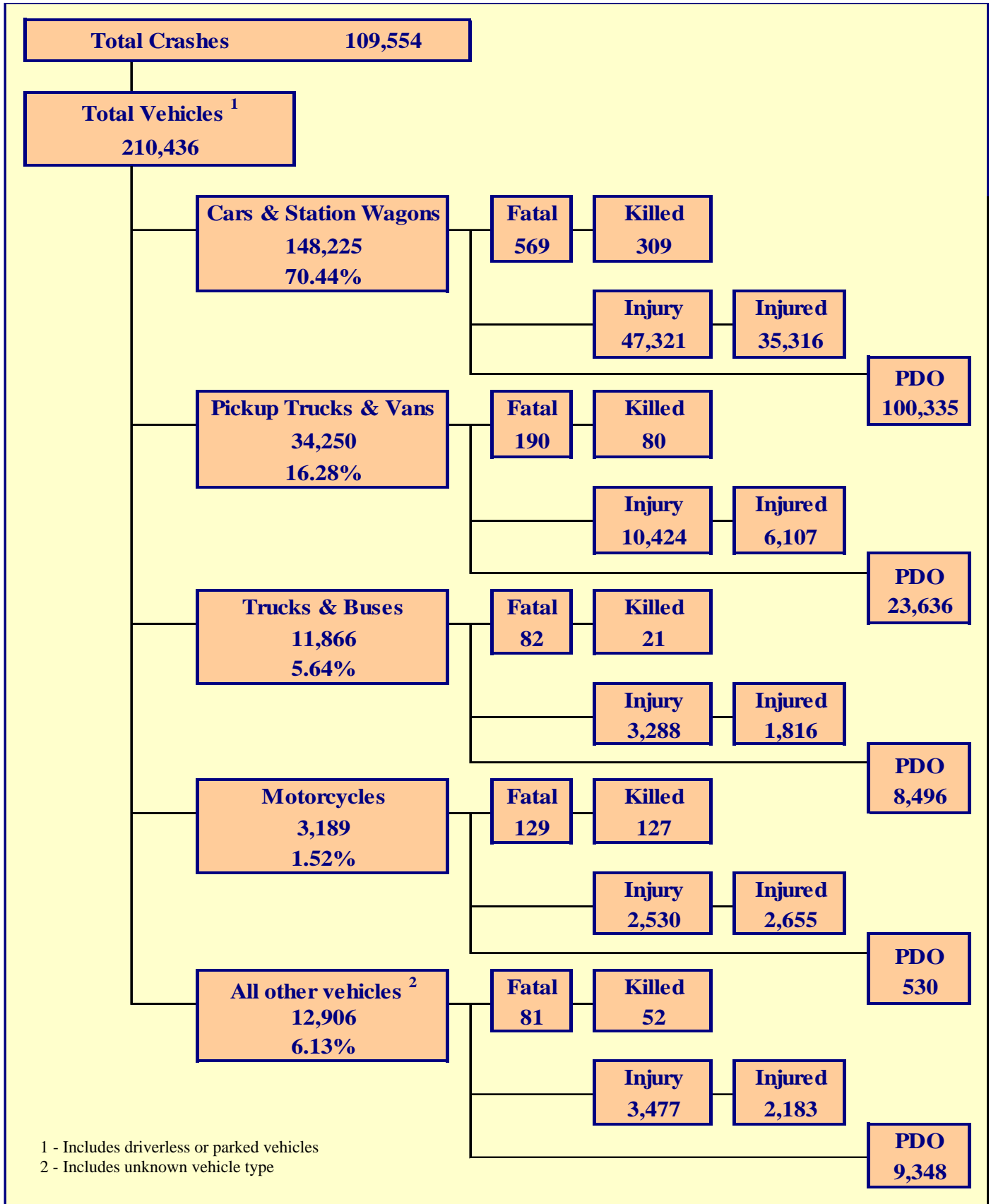
Gender of Driver	Number of Drivers						Total	Percent of Total
	Safety Device Used	Percent of Safety Device Used	Safety Device Not Used	Percent of Safety Device Not Used	Safety Device Use Unknown	Percent of Unknown		
Male	100,465	55.22%	2,569	71.96%	8,525	34.18%	111,559	53.01%
Female	81,352	44.72%	991	27.76%	4,388	17.59%	86,731	41.21%
Unknown	110	0.06%	10	0.28%	12,026	48.22%	12,146	5.77%
TOTAL	181,927	100.00%	3,570	100.00%	24,939	100.00%	210,436	100.00%

**Table 4 – 5
Driver Safety Device Usage by Age**

Driver Age Group	Number of Drivers						Total	Percent of Total
	Safety Device Used	Percent of Safety Device Used	Safety Device Not Used	Percent of Safety Device Not Used	Safety Device Use Unknown	Percent of Unknown		
15 & Under	209	0.11%	26	0.73%	54	0.22%	289	0.14%
16	2,396	1.32%	31	0.87%	123	0.49%	2,550	1.21%
17	3,688	2.03%	75	2.10%	223	0.89%	3,986	1.89%
18	5,063	2.78%	131	3.67%	322	1.29%	5,516	2.62%
19	5,445	2.99%	143	4.01%	322	1.29%	5,910	2.81%
20	5,383	2.96%	109	3.05%	362	1.45%	5,854	2.78%
21	5,283	2.90%	150	4.20%	397	1.59%	5,830	2.77%
22	5,203	2.86%	125	3.50%	378	1.52%	5,706	2.71%
23	5,045	2.77%	143	4.01%	342	1.37%	5,530	2.63%
24	4,828	2.65%	132	3.70%	361	1.45%	5,321	2.53%
25-34	39,486	21.70%	849	23.78%	2,658	10.66%	42,993	20.43%
35-44	32,191	17.69%	491	13.75%	1,960	7.86%	34,642	16.46%
45-54	27,936	15.36%	520	14.57%	1,654	6.63%	30,110	14.31%
55-64	20,866	11.47%	365	10.22%	1,221	4.90%	22,452	10.67%
65-74	11,662	6.41%	160	4.48%	633	2.54%	12,455	5.92%
75 & Older	6,320	3.47%	77	2.16%	327	1.31%	6,724	3.20%
Unknown	923	0.51%	43	1.20%	13,602	54.54%	14,568	6.92%
TOTAL	181,927	100.00%	3,570	100.00%	24,939	100.00%	210,436	100.00%

Section 5

Motor Vehicle and Driver Descriptions



Section 5: – Motor Vehicle and Driver Descriptions

Table 5 – 1

Arizona Motor Vehicle Registrations

Privately Owned Vehicles	4,620,885
Commercial Vehicles	482,803
Buses and Taxis	4,450
Motorcycles	192,474
Mopeds	368
TOTAL	5,300,980
Source: MVD - MV988 MV630419, Currently Registered Vehicles by County Listing, dated 12/31/2014.	

Table 5 – 2

Motor Vehicle Crash Involvement by Vehicle Type

Motor Vehicle Type	Number of Vehicles				
	Total	Percent of Total	In Fatal Crashes	In Injury Crashes	In PDO Crashes
Passenger Cars (Sedans, Convertibles, etc.)	104,541	49.678%	366	33,261	70,914
Station Wagons	43,684	20.759%	203	14,060	29,421
Pickup Trucks	32,317	15.357%	177	9,816	22,324
Vans	1,933	0.919%	13	608	1,312
Truck Tractor (with or without Semi-Trailer)	1,876	0.891%	39	441	1,396
Concrete Mixer Trucks	40	0.019%	1	7	32
Dump Trucks	181	0.086%	0	46	135
Garbage Trucks	128	0.061%	3	23	102
Tanker Trucks	32	0.015%	1	12	19
Wrecker or Tow Trucks	111	0.053%	1	32	78
Other Truck Combinations	8,514	4.046%	33	2,530	5,951
School Bus	225	0.107%	1	56	168
Commercial or Non-Commercial Bus	759	0.361%	3	141	615
Motorcycle (two or three wheel)	3,189	1.515%	129	2,530	530
All Terrain Vehicle or Cycle	141	0.067%	9	110	22
Moped	23	0.011%	2	20	1
Recreational Vehicle	141	0.067%	1	32	108
Motor Home or House Car	82	0.039%	0	20	62
Fire Trucks	44	0.021%	0	6	38
Ambulances	52	0.025%	1	15	36
Other Types Of Vehicles	144	0.068%	7	70	67
Vehicle Type Unknown	12,279	5.835%	61	3,204	9,014
TOTAL	210,436	100.00%	1,051	67,040	142,345

Section 5: – Motor Vehicle and Driver Descriptions

Table 5 – 3

Hit and Run Drivers Involved in Crashes

Hit and Run	Number of Crashes				Number of Persons	
	Total	Fatal	Injury	PDO	Killed	Injured
Yes	12,324	45	2,424	9,855	45	3,163
No	97,230	663	32,027	64,540	729	47,727
TOTAL	109,554	708	34,451	74,395	774	50,890

Table 5 – 4

Gender of Drivers Involved in Crashes

Gender of Driver	Number of Drivers							
	Total	Percent of Total	In Fatal Crashes	Percent of Fatal	In Injury Crashes	Percent of Injury	In PDO Crashes	Percent of PDO
Male	111,559	53.01%	697	66.32%	35,912	53.57%	74,950	52.65%
Female	86,731	41.21%	284	27.02%	29,143	43.47%	57,304	40.26%
Unknown	12,146	5.77%	70	6.66%	1,985	2.96%	10,091	7.09%
TOTAL	210,436	100.00%	1,051	100.00%	67,040	100.00%	142,345	100.00%

Table 5 – 5

License Status of Drivers Involved in Crashes

License Status of Driver	Number of Drivers							
	Total	Percent of Total	In Fatal Crashes	Percent of Fatal	In Injury Crashes	Percent of Injury	In PDO Crashes	Percent of PDO
Arizona License	168,909	80.27%	780	74.22%	55,549	82.86%	112,580	79.09%
All Others*	41,527	19.73%	271	25.78%	11,491	17.14%	29,765	20.91%
TOTAL	210,436	100.00%	1,051	100.00%	67,040	100.00%	142,345	100.00%

*Includes drivers that have a suspended, revoked, out-of-state or country license, as well as drivers with no license or unknown license type

Table 5 – 6

Passengers Killed and Injured by Age and Gender

Age of Passenger	Passengers Killed			Passengers Injured			Gender Unknown
	Total	Male	Female	Total	Male	Female	
0-4	8	6	2	811	420	391	0
5-9	5	0	5	1,034	474	560	0
10-14	7	3	4	1,208	520	688	0
15-19	22	16	6	1,882	789	1,093	0
20-24	22	12	10	1,486	626	860	0
25-34	20	13	7	1,706	687	1,019	0
35-44	16	4	12	1,205	406	799	0
45-54	15	7	8	1,168	361	807	0
55-64	13	7	6	944	238	706	0
65-74	22	7	15	650	139	511	0
75 & Older	14	3	11	442	123	319	0
Unknown	0	0	0	372	119	197	56
TOTAL	164	78	86	12,908	4,902	7,950	56

Section 5: – Motor Vehicle and Driver Descriptions

Table 5 – 7

Drivers and Passengers Killed and Injured by Vehicle Type

Motor Vehicle Type	Number of Drivers		Number of Passengers	
	Killed	Injured	Killed	Injured
Passenger Cars (Sedans, Convertibles, etc.)	140	18,507	69	6,368
Station Wagons	66	7,208	34	3,233
Pickup Trucks	45	4,154	32	1,538
Vans	2	253	1	162
Truck Tractor (with or without Semi-Trailer)	5	125	0	33
Concrete Mixer Trucks	0	4	0	0
Dump Trucks	0	9	0	4
Garbage Trucks	1	5	0	0
Tanker Trucks	0	2	0	0
Wrecker or Tow Trucks	0	5	0	1
Other Truck Combinations	8	950	6	520
School Bus	1	9	0	44
Commercial or Non-Commercial Bus	0	26	0	79
Motorcycle (two or three wheel)	123	2,469	4	186
All Terrain Vehicle or Cycle	7	86	1	50
Moped	2	20	0	4
Recreational Vehicle	0	15	1	4
Motor Home or House Car	0	10	0	7
Fire Trucks	0	0	0	0
Ambulances	0	5	0	8
Other Types Of Vehicles	6	48	1	9
Vehicle Type Unknown	19	1,259	15	658
TOTAL	425	35,169	164	12,908

Table 5 – 8

Drivers Killed and Injured by Age and Gender

Age of Driver	Drivers Killed				Drivers Injured			
	Total	Male	Female	Gender Unknown	Total	Male	Female	Gender Unknown
0-4	0	0	0	0	0	0	0	0
5-9	0	0	0	0	1	0	1	0
10-14	1	1	0	0	30	13	17	0
15-19	23	19	4	0	2,838	1,415	1,423	0
20-24	46	40	6	0	4,895	2,440	2,455	0
25-34	88	67	21	0	7,660	3,716	3,944	0
35-44	60	48	12	0	6,012	2,927	3,085	0
45-54	67	53	14	0	5,603	2,798	2,805	0
55-64	62	49	13	0	4,309	2,239	2,070	0
65-74	38	28	10	0	2,335	1,264	1,071	0
75 & Older	38	22	16	0	1,286	661	625	0
Unknown	2	1	0	1	200	93	49	58
TOTAL	425	328	96	1	35,169	17,566	17,545	58

Section 5: – Motor Vehicle and Driver Descriptions

**Table 5 – 9
Licensed Drivers in Arizona by Age**

Driver Age Group	Male Number	Percent of Male	Female Number	Percent of Female	Total Number	Percent of Total	Cumulative Percent
16	9,959	0.40%	9,967	0.41%	19,926	0.40%	0.40%
17	18,473	0.75%	17,314	0.71%	35,787	0.73%	1.13%
18	26,245	1.06%	24,217	0.99%	50,462	1.03%	2.16%
19	31,187	1.26%	28,571	1.17%	59,758	1.21%	3.37%
20	34,057	1.38%	31,834	1.30%	65,891	1.34%	4.71%
21	36,470	1.47%	34,573	1.41%	71,043	1.44%	6.15%
22	38,702	1.56%	36,836	1.50%	75,538	1.53%	7.69%
23	39,848	1.61%	38,723	1.58%	78,571	1.60%	9.28%
24	41,888	1.69%	40,992	1.67%	82,880	1.68%	10.97%
25-34	446,484	18.04%	440,065	17.98%	886,549	18.01%	28.98%
35-44	463,841	18.74%	440,881	18.01%	904,722	18.38%	47.35%
45-54	461,078	18.63%	442,436	18.07%	903,514	18.35%	65.71%
55-64	411,828	16.64%	427,300	17.45%	839,128	17.05%	82.76%
65-74	260,001	10.51%	273,749	11.18%	533,750	10.84%	93.60%
75 & older	154,521	6.24%	160,636	6.56%	315,157	6.40%	100.00%
TOTALS	2,474,582	100.00%	2,448,094	100.00%	4,922,676	100.00%	100.00%

Source: MVD - MV708 MV650653-1, Point-in-Time Driver Credential Report/All Driver Licenses by Age, Gender, & Class (page 19), dated 1/2/2015.

**Table 5 – 10
Driver Involvement by Age**

Driver Age Group	Number of Drivers							
	Total	Percent of Total	In Fatal Crashes	Percent of Fatal	In Injury Crashes	Percent of Injury	In PDO Crashes	Percent of PDO
15 & Under	289	0.14%	2	0.19%	124	0.18%	163	0.11%
16	2,550	1.21%	5	0.48%	709	1.06%	1,836	1.29%
17	3,986	1.89%	9	0.86%	1,221	1.82%	2,756	1.94%
18	5,516	2.62%	22	2.09%	1,712	2.55%	3,782	2.66%
19	5,910	2.81%	24	2.28%	1,924	2.87%	3,962	2.78%
20	5,854	2.78%	24	2.28%	1,886	2.81%	3,944	2.77%
21	5,830	2.77%	32	3.04%	1,931	2.88%	3,867	2.72%
22	5,706	2.71%	25	2.38%	1,881	2.81%	3,800	2.67%
23	5,530	2.63%	26	2.47%	1,821	2.72%	3,683	2.59%
24	5,321	2.53%	16	1.52%	1,712	2.55%	3,593	2.52%
25-34	42,993	20.43%	195	18.55%	14,050	20.96%	28,748	20.20%
35-44	34,642	16.46%	153	14.56%	11,208	16.72%	23,281	16.36%
45-54	30,110	14.31%	160	15.22%	10,179	15.18%	19,771	13.89%
55-64	22,452	10.67%	132	12.56%	7,531	11.23%	14,789	10.39%
65-74	12,455	5.92%	78	7.42%	4,251	6.34%	8,126	5.71%
75 & Older	6,724	3.20%	62	5.90%	2,297	3.43%	4,365	3.07%
Unknown	14,568	6.92%	86	8.18%	2,603	3.88%	11,879	8.35%
TOTAL	210,436	100.00%	1,051	100.00%	67,040	100.00%	142,345	100.00%

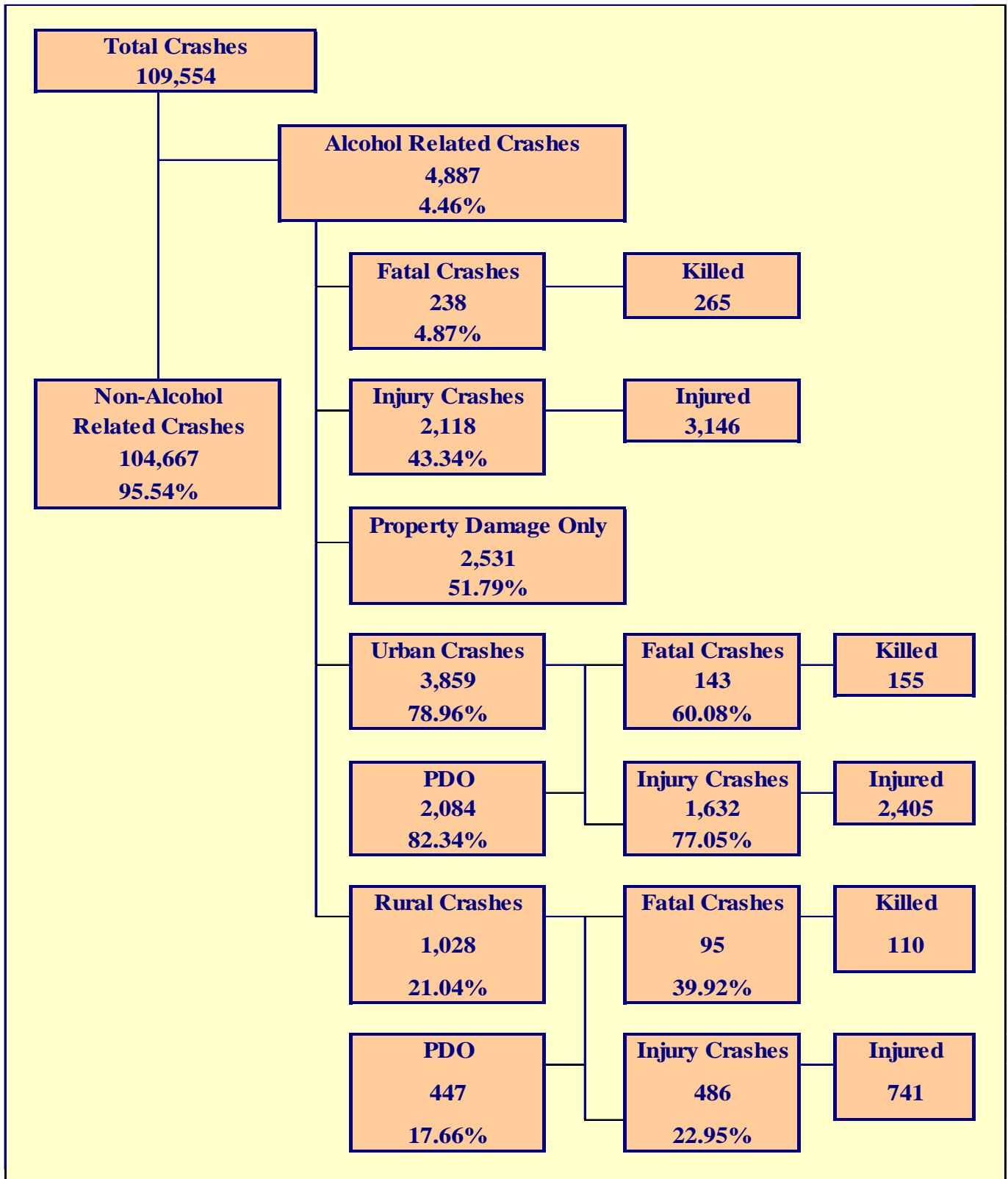
Section 5: – Motor Vehicle and Driver Descriptions

**Table 5 – 11
Driver Violations**

Type of Violation or Behavior	Number of Drivers							
	Total	Percent of Total	In Fatal Crashes	Percent of Fatal	In Injury Crashes	Percent of Injury	In PDO Crashes	Percent of PDO
No Improper Action	102,899	48.90%	380	36.16%	33,349	49.74%	69,170	48.59%
Speed too Fast for Conditions	36,130	17.17%	135	12.84%	12,039	17.96%	23,956	16.83%
Exceeded Lawful Speed	900	0.43%	32	3.04%	374	0.56%	494	0.35%
Failed to Yield Right-Of-Way	14,117	6.71%	69	6.57%	5,561	8.30%	8,487	5.96%
Followed Too Closely	5,586	2.65%	4	0.38%	1,448	2.16%	4,134	2.90%
Ran Stop Sign	1,056	0.50%	20	1.90%	461	0.69%	575	0.40%
Disregarded Traffic Signal	4,627	2.20%	26	2.47%	2,192	3.27%	2,409	1.69%
Made Improper Turn	5,310	2.52%	13	1.24%	1,588	2.37%	3,709	2.61%
Drove in Opposing Lane	1,166	0.55%	49	4.66%	496	0.74%	621	0.44%
Knowingly Operated with Faulty or Missing Equipment	235	0.11%	2	0.19%	78	0.12%	155	0.11%
Required Motorcycle Safety Equipment Not Used	30	0.01%	2	0.19%	14	0.02%	14	0.01%
Passed in No-Passing Zone	95	0.05%	5	0.48%	32	0.05%	58	0.04%
Unsafe Lane Change	6,492	3.09%	7	0.67%	1,025	1.53%	5,460	3.84%
Failed to Keep in Proper Lane	3,424	1.63%	43	4.09%	988	1.47%	2,393	1.68%
Disregarded Pavement Markings	196	0.09%	1	0.10%	54	0.08%	141	0.10%
Other Unsafe Passing	574	0.27%	5	0.48%	117	0.17%	452	0.32%
Inattention/Distraction	7,284	3.46%	15	1.43%	1,982	2.96%	5,287	3.71%
Electronic Communications Device	105	0.05%	2	0.19%	43	0.06%	60	0.04%
Other	5,987	2.85%	23	2.19%	1,667	2.49%	4,297	3.02%
Unknown	14,223	6.76%	218	20.74%	3,532	5.27%	10,473	7.36%
TOTAL	210,436	100.00%	1,051	100.00%	67,040	100.00%	142,345	100.00%

**Table 5 – 12
Driver Physical Condition**

Type of Condition	Number of Drivers							
	Total	Percent of Total	In Fatal Crashes	Percent of Fatal	In Injury Crashes	Percent of Injury	In PDO Crashes	Percent of PDO
No Apparent Influence	186,022	88.40%	556	52.90%	59,543	88.82%	125,923	88.46%
Had Been Drinking	4,692	2.23%	177	16.84%	1,984	2.96%	2,531	1.78%
Appeared to be Under the Influence of Drugs*	672	0.32%	53	5.04%	327	0.49%	292	0.21%
Medications	238	0.11%	3	0.29%	111	0.17%	124	0.09%
Illness	716	0.34%	7	0.67%	375	0.56%	334	0.23%
Physical Impairment	218	0.10%	1	0.10%	104	0.16%	113	0.08%
Fell Asleep or Fatigued	1,474	0.70%	4	0.38%	615	0.92%	855	0.60%
Other	987	0.47%	12	1.14%	292	0.44%	683	0.48%
Unknown	15,417	7.33%	238	22.65%	3,689	5.50%	11,490	8.07%
TOTAL	210,436	100.00%	1,051	100.00%	67,040	100.00%	142,345	100.00%
*Illegal drugs or narcotics								



Section 6: – Alcohol Related Crashes

The statistics in the Alcohol Related section represent those crashes where the investigating officer indicated that a driver, pedestrian, or pedalcyclist had been drinking an alcoholic beverage and may or may not be substantiated by a blood or breath test. No assumption is to be made that the person was legally intoxicated (blood alcohol content of 0.08% or higher) at the time of the crash.

Table 6 – 1
Economic Loss Due to Alcohol Related Crashes in Arizona for 2014

Fatalities	\$405,450,000
Incapacitating Injuries	\$43,164,870
Non-Incapacitating Injuries	\$30,428,640
Possible Injuries	\$18,560,736
Property Damage Only	\$24,009,066
TOTAL	\$521,613,312

Refer to note on Page 4 for Economic Loss Estimates

Table 6 – 2
Alcohol Related Crash History

Year	Alcohol Related Crashes	Percent of all Crashes	Persons Killed	Percent of all Fatalities	Persons Injured	Percent of all Injuries
2010	5,583	5.22%	255	33.60%	3,801	7.53%
2011	5,602	5.39%	287	34.70%	3,714	7.45%
2012	5,460	5.25%	283	34.47%	3,754	7.50%
2013	5,239	4.87%	282	33.22%	3,520	6.99%
2014	4,887	4.46%	265	34.24%	3,146	6.18%

Table 6 – 3
Manner of Collision in Alcohol Related Crashes

Manner of Collision Type	Number of Crashes							
	Total	Percent of All Crashes	Fatal	Percent of Fatal Crashes	Injury	Percent of Injury Crashes	PDO	Percent of PDO Crashes
Angle	449	16.09%	14	9.93%	243	19.21%	192	13.87%
Left Turn	279	10.00%	10	7.09%	163	12.89%	106	7.66%
Rear End	1,181	42.33%	16	11.35%	486	38.42%	679	49.06%
Head-On	161	5.77%	13	9.22%	94	7.43%	54	3.90%
Sideswipe (same)	268	9.61%	4	2.84%	68	5.38%	196	14.16%
Sideswipe (opposite)	108	3.87%	1	0.71%	38	3.00%	69	4.99%
Rear to Side	21	0.75%	0	0.00%	1	0.08%	20	1.45%
Rear to Rear	8	0.29%	0	0.00%	2	0.16%	6	0.43%
Other	297	10.65%	81	57.45%	159	12.57%	57	4.12%
Unknown	18	0.65%	2	1.42%	11	0.87%	5	0.36%
TOTAL	2,790	100.00%	141	100.00%	1,265	100.00%	1,384	100.00%

Note: Includes only multi-vehicle alcohol related crashes

Section 6: – Alcohol Related Crashes

Table 6 – 4
Alcohol Related Crashes by First Harmful Event

First Harmful Event Type	Number of Crashes				Number of Persons	
	Total	Fatal	Injury	PDO	Killed	Injured
Collision with Motor Vehicle in Transport	1,580	59	705	816	71	1,310
Overturning	224	35	147	42	39	201
Collision with Pedestrian	144	65	73	6	66	83
Collision with Pedalcyclist	44	6	38	0	6	40
Collision with Animal	4	0	3	1	0	4
Collision with Fixed Object	1,517	61	579	877	69	711
Collision with Non-fixed Object*	260	5	65	190	5	78
Vehicle Fire or Explosion	2	0	0	2	0	0
Other Non-collision**	22	3	11	8	3	12
Unknown	1,090	4	497	589	6	707
TOTAL	4,887	238	2,118	2,531	265	3,146
*Includes Collision with Parked Vehicles, Trains, Railway Vehicles, and Work Zone Equipment						
**Includes Vehicle Immersion, Jackknife, and Cargo Loss or Shift						

Table 6 – 5
Alcohol Related Crashes by Vehicle Type

Motor Vehicle Type	Number of Vehicles				
	Total	Percent of Total	In Fatal Crashes	In Injury Crashes	In PDO Crashes
Passenger Cars (Sedans, Convertibles, etc.)	2,473	52.707%	72	953	1,448
Station Wagons	831	17.711%	27	376	428
Pickup Trucks	864	18.414%	27	363	474
Vans	22	0.469%	0	9	13
Truck Tractor (with or without Semi-Trailer)	2	0.043%	0	1	1
Concrete Mixer Trucks	0	0.000%	0	0	0
Dump Trucks	1	0.021%	0	0	1
Garbage Trucks	0	0.000%	0	0	0
Tanker Trucks	0	0.000%	0	0	0
Wrecker or Tow Trucks	1	0.021%	0	0	1
Other Truck Combinations	123	2.621%	3	59	61
School Bus	0	0.000%	0	0	0
Commercial or Non-Commercial Bus	0	0.000%	0	0	0
Motorcycle (two or three wheel)	193	4.113%	40	141	12
All Terrain Vehicle or Cycle	13	0.277%	3	10	0
Moped	1	0.021%	0	1	0
Recreational Vehicle	1	0.021%	0	0	1
Motor Home or House Car	2	0.043%	0	0	2
Fire Trucks	0	0.000%	0	0	0
Ambulances	0	0.000%	0	0	0
Other Types Of Vehicles	7	0.149%	0	5	2
Vehicle Type Unknown	158	3.367%	5	66	87
TOTAL	4,692	100.00%	177	1,984	2,531

Section 6: – Alcohol Related Crashes

**Table 6 – 6
Lighting Conditions in Alcohol Related Crashes**

Type of Lighting Conditions	Number of Crashes				Number of Persons	
	Total	Fatal	Injury	PDO	Killed	Injured
Daylight	1,391	63	607	721	70	935
Dawn	75	3	27	45	3	38
Dusk	128	9	56	63	9	84
Dark - Lighted	2,469	81	1,053	1,335	85	1,542
Dark - Not Lighted	771	62	364	345	74	527
Dark - Unknown Lighting	53	20	11	22	24	20
TOTAL	4,887	238	2,118	2,531	265	3,146

**Table 6 – 7
Road Surface Conditions in Alcohol Related Crashes**

Type of Road Surface Condition	Number of Drivers				Number of Persons	
	Total	In Fatal Crashes	In Injury Crashes	In PDO Crashes	Killed	Injured
Dry	4,422	144	1,896	2,382	212	3,018
Wet	178	4	63	111	8	83
Snow	2	0	1	1	0	1
Slush	0	0	0	0	0	0
Ice/Frost	1	0	0	1	0	1
Water (standing or moving)	1	0	0	1	0	0
Sand	3	0	2	1	0	2
Mud, Dirt, Gravel	46	9	19	18	10	27
Oil	0	0	0	0	0	0
Other	1	0	0	1	0	0
Unknown	38	20	3	15	35	14
TOTAL	4,692	177	1,984	2,531	265	3,146

**Table 6 – 8
Gender of Drivers Involved in Alcohol Related Crashes**

Gender of Driver	Number of Drivers							
	Total	Percent of Total	In Fatal Crashes	Percent of Fatal	In Injury Crashes	Percent of Injury	In PDO Crashes	Percent of PDO
Male	3,410	72.68%	133	75.14%	1,456	73.39%	1,821	71.95%
Female	1,239	26.41%	41	23.16%	518	26.11%	680	26.87%
Unknown	43	0.92%	3	1.69%	10	0.50%	30	1.19%
TOTAL	4,692	100.00%	177	100.00%	1,984	100.00%	2,531	100.00%

*In total crashes across the state, 53.01% of the drivers were males.
When alcohol was involved, males accounted for 72.68% of the drivers.*

Section 6: – Alcohol Related Crashes

Table 6 – 9

Driver Involvement by Age in Alcohol Related Crashes

Driver Age Group	Number of Drivers							
	Total	Percent of Total	In Fatal Crashes	Percent of Fatal	In Injury Crashes	Percent of Injury	In PDO Crashes	Percent of PDO
15 & Under	3	0.06%	0	0.00%	2	0.10%	1	0.04%
16	16	0.34%	1	0.56%	7	0.35%	8	0.32%
17	25	0.53%	0	0.00%	7	0.35%	18	0.71%
18	76	1.62%	2	1.13%	24	1.21%	50	1.98%
19	118	2.51%	3	1.69%	46	2.32%	69	2.73%
20	125	2.66%	2	1.13%	52	2.62%	71	2.81%
21	215	4.58%	9	5.08%	89	4.49%	117	4.62%
22	230	4.90%	5	2.82%	96	4.84%	129	5.10%
23	189	4.03%	7	3.95%	89	4.49%	93	3.67%
24	208	4.43%	5	2.82%	85	4.28%	118	4.66%
25-34	1,408	30.01%	53	29.94%	599	30.19%	756	29.87%
35-44	806	17.18%	27	15.25%	347	17.49%	432	17.07%
45-54	653	13.92%	30	16.95%	287	14.47%	336	13.28%
55-64	408	8.70%	19	10.73%	178	8.97%	211	8.34%
65-74	117	2.49%	7	3.95%	52	2.62%	58	2.29%
75 & Older	24	0.51%	1	0.56%	6	0.30%	17	0.67%
Unknown	71	1.51%	6	3.39%	18	0.91%	47	1.86%
TOTAL	4,692	100.00%	177	100.00%	1,984	100.00%	2,531	100.00%

Table 6 – 10

When Alcohol Related Crashes Occurred in 2014

Time of Day	Total	Weekday	Weekend*
Daytime**	1,305	785	520
Nighttime	3,582	1,424	2,158
Total	4,887	2,209	2,678
*Weekend begins at 6:00 p.m. on Friday and continues through 6:00 a.m. Monday. All other times and days are considered Weekdays.			
**Daytime refers to the hours between 6:00 a.m. and 6:00 p.m.			

Table 6 – 11

Safety Device Usage for Drinking Drivers

Severity of Injury	Safety Device Not Used	Lap Belt	Lap & Shoulder Belt	Protective Helmet	Other	Unknown	Totals
No Injury	146	23	1,896	2	0	866	2,933
Unknown Injury	7	0	23	0	1	164	195
Possible Injury	53	4	278	5	2	175	517
Non-Incapacitating Injury	139	4	290	16	0	193	642
Incapacitating Injury	117	3	56	12	0	87	275
Fatal Injury	85	2	15	7	0	21	130
TOTALS	547	36	2,558	42	3	1,506	4,692

Section 6: – Alcohol Related Crashes

Table 6 – 12

Persons Killed and Injured in Alcohol Related Crashes

Age of Victim	Persons Killed			Persons Injured			
	Total	Male	Female	Total	Male	Female	Gender Unknown
0-4	0	0	0	28	18	10	0
5-9	0	0	0	50	22	28	0
10-14	4	0	4	53	25	28	0
15-19	13	12	1	222	112	110	0
20-24	31	26	5	592	378	214	0
25-34	61	46	15	775	530	245	0
35-44	45	33	12	513	331	182	0
45-54	54	43	11	443	281	162	0
55-64	35	30	5	300	202	98	0
65-74	14	11	3	105	72	33	0
75 & Older	5	4	1	25	10	15	0
Unknown	3	2	1	40	25	7	8
TOTAL	265	207	58	3,146	2,006	1,132	8

Table 6 – 13

Alcohol Related Crashes by County

County	Number of Crashes				Number of Persons	
	Total	Fatal	Injury	PDO	Killed	Injured
Apache	30	3	18	9	3	33
Cochise	55	4	23	28	5	38
Coconino	156	11	78	67	15	125
Gila	52	5	26	21	5	42
Graham	23	3	10	10	3	17
Greenlee	9	0	2	7	0	2
La Paz	12	0	8	4	0	13
Maricopa	3,162	124	1,334	1,704	137	1,993
Mohave	187	6	77	104	6	97
Navajo	54	8	22	24	9	29
Pima	641	36	296	309	39	431
Pinal	189	14	91	84	16	141
Santa Cruz	16	2	7	7	3	11
Yavapai	158	9	71	78	10	89
Yuma	143	13	55	75	14	85
TOTAL	4,887	238	2,118	2,531	265	3,146

Section 6: – Alcohol Related Crashes

Chart 6 – 1

All Alcohol Related Crashes vs. Fatal Alcohol Related Crashes by Day of Week

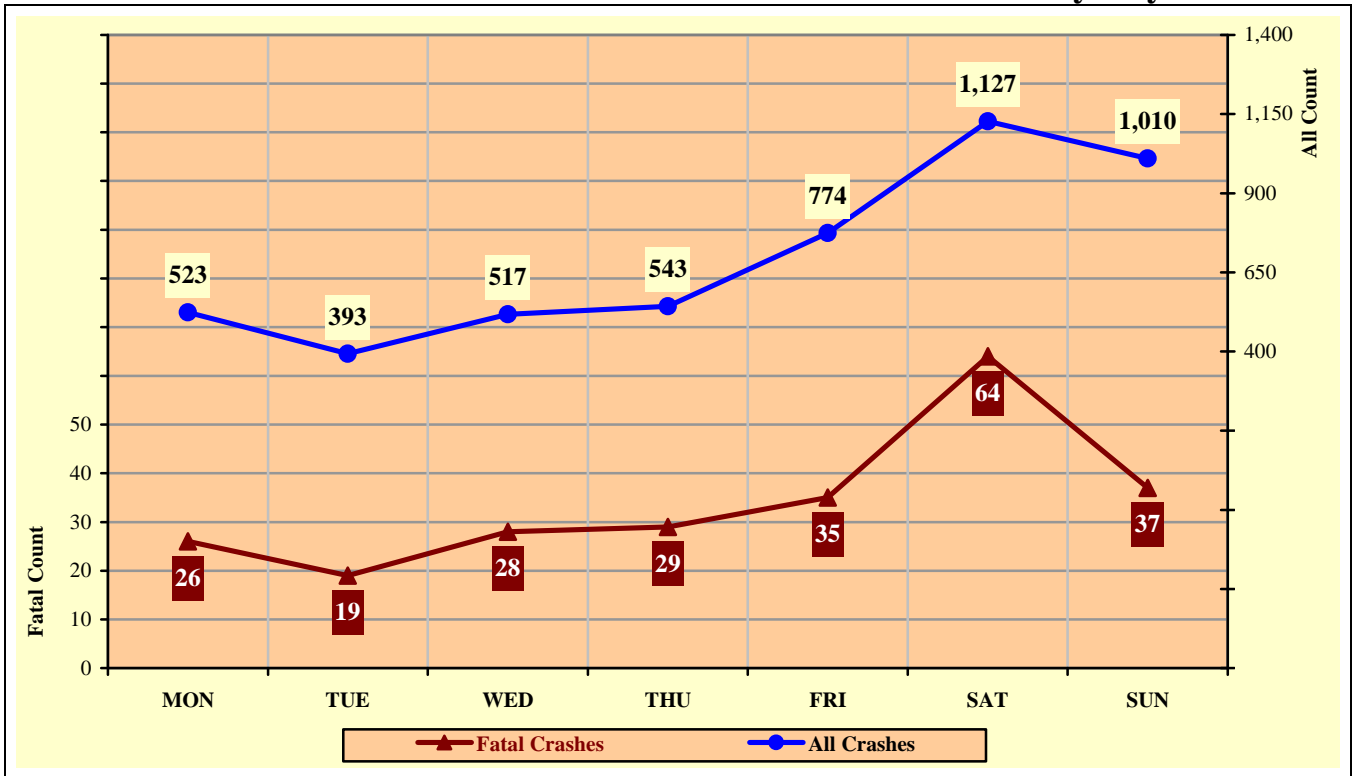
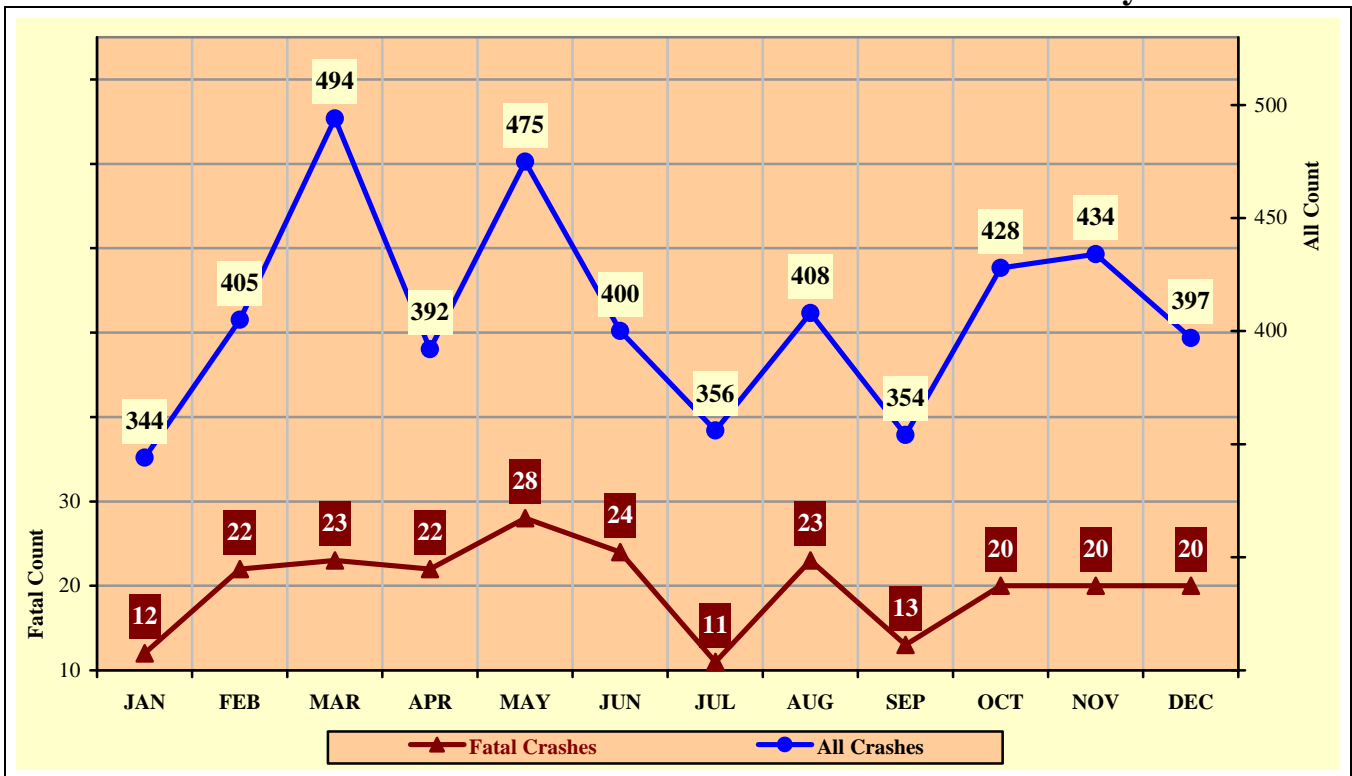


Chart 6 – 2

All Alcohol Related Crashes vs. Fatal Alcohol Related Crashes by Month



Section 6: – Alcohol Related Crashes

Chart 6 – 3

All Alcohol Related Crashes vs. Fatal Alcohol Related Crashes - Weekdays

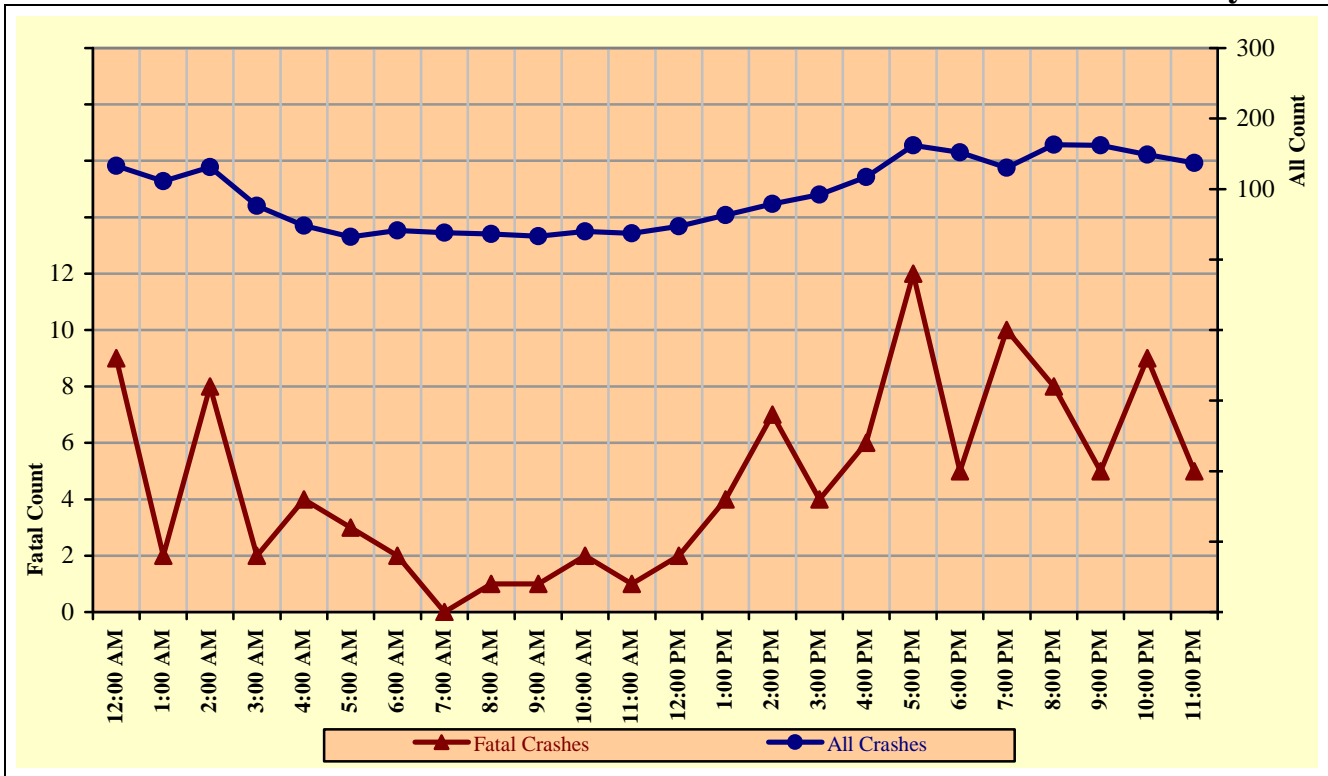
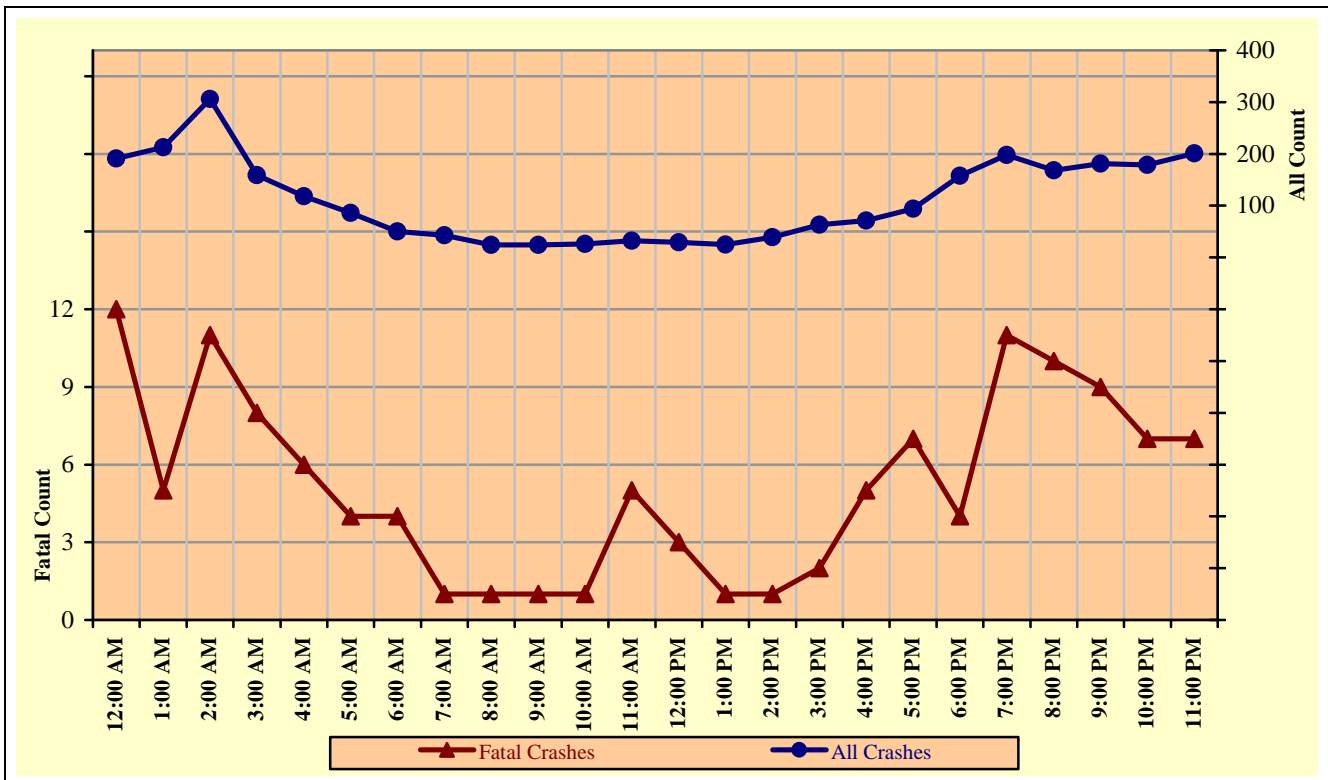


Chart 6 – 4

All Alcohol Related Crashes vs. Fatal Alcohol Related Crashes - Weekends



Section 6: – Alcohol Related Crashes

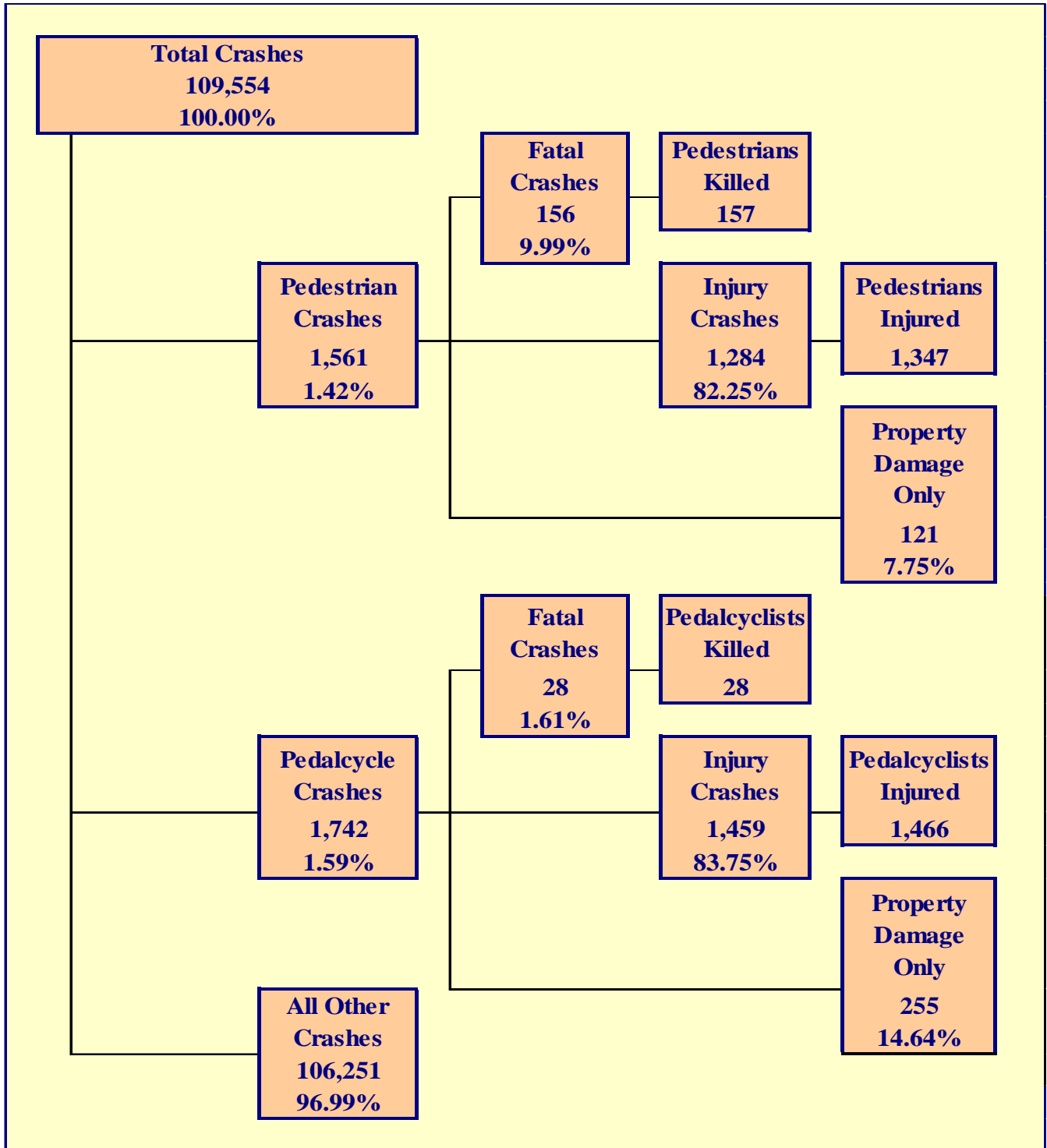
Table 6 – 14

Alcohol Related Crashes by Hour and Day of Week

Hour Beginning	Total Crashes		Monday		Tuesday		Wednesday		Thursday		Friday		Saturday		Sunday		Weekdays		Weekends	
	All	Fatal	All	Fatal	All	Fatal	All	Fatal	All	Fatal	All	Fatal	All	Fatal	All	Fatal	All	Fatal	All	Fatal
12:00 AM	324	21	31	4	25	2	35	0	29	4	44	3	80	6	80	2	133	9	191	12
1:00 AM	324	7	41	1	23	0	29	0	33	1	26	1	90	2	82	2	111	2	213	5
2:00 AM	437	19	33	0	23	2	27	1	32	2	49	3	128	11	145	0	131	8	306	11
3:00 AM	235	10	15	3	12	0	18	2	21	0	25	0	75	4	69	1	76	2	159	8
4:00 AM	166	10	10	0	12	1	5	1	11	0	20	2	53	4	55	2	48	4	118	6
5:00 AM	118	7	10	0	6	0	3	0	12	3	11	0	35	2	41	2	32	3	86	4
6:00 AM	91	6	4	1	7	0	6	0	9	0	15	1	20	0	30	4	41	2	50	4
7:00 AM	81	1	8	0	8	0	6	0	9	0	7	0	14	0	29	1	38	0	43	1
8:00 AM	60	2	9	1	8	0	4	0	9	0	6	0	12	1	12	0	36	1	24	1
9:00 AM	57	2	7	0	4	0	8	1	5	0	9	0	10	0	14	1	33	1	24	1
10:00 AM	66	3	9	0	5	0	11	0	5	2	10	0	17	1	9	0	40	2	26	1
11:00 AM	69	6	7	0	8	0	9	0	7	0	6	1	23	0	9	5	37	1	32	5
12:00 PM	76	5	10	0	6	0	9	0	9	2	13	0	17	1	12	2	47	2	29	3
1:00 PM	88	5	14	0	10	0	14	2	13	1	12	1	16	1	9	0	63	4	25	1
2:00 PM	118	8	19	1	13	2	11	1	19	2	17	1	21	1	18	0	79	7	39	1
3:00 PM	155	6	16	0	9	1	20	3	13	0	34	0	34	1	29	1	92	4	63	2
4:00 PM	188	11	19	2	20	1	20	2	22	0	36	1	39	5	32	0	117	6	71	5
5:00 PM	256	19	36	3	25	2	32	1	36	2	33	4	51	5	43	2	162	12	94	7
6:00 PM	310	9	46	0	34	3	35	1	37	1	54	1	54	2	50	1	152	5	158	4
7:00 PM	328	21	38	3	20	0	39	6	33	1	59	2	72	5	67	4	130	10	198	11
8:00 PM	331	18	38	3	35	2	46	1	44	2	66	6	52	2	50	2	163	8	168	10
9:00 PM	343	14	36	0	28	1	49	1	49	3	67	4	68	3	46	2	162	5	181	9
10:00 PM	328	16	32	2	28	2	44	2	45	3	73	3	67	3	39	1	149	9	179	7
11:00 PM	338	12	35	2	24	0	37	3	41	0	82	1	79	4	40	2	137	5	201	7
TOTAL	4,887	238	523	26	393	19	517	28	543	29	774	35	1,127	64	1,010	37	2,209	112	2,678	126

Crashes during Weekends accounted for 54.80% of all Alcohol Related crashes and 52.94% of Alcohol Related Fatal Crashes.

Crashes during Weekdays accounted for 45.20% of all Alcohol Related crashes and 47.06% of Alcohol Related Fatal Crashes.



Section 7: – Pedestrian and Pedalcyclist Crashes

Table 7 – 1

Pedestrians Killed and Injured By Age and Gender

Age Group	Pedestrians Killed				Pedestrians Injured			
	Total	Male	Female	Gender Unknown	Total	Male	Female	Gender Unknown
0-4	1	1	0	0	28	16	12	0
5-9	4	3	1	0	64	32	32	0
10-14	0	0	0	0	74	48	26	0
15-19	5	5	0	0	215	124	91	0
20-24	15	13	2	0	150	92	58	0
25-34	20	14	6	0	202	131	71	0
35-44	12	10	2	0	168	100	68	0
45-54	30	22	8	0	185	125	60	0
55-64	33	24	9	0	125	84	41	0
65-74	18	13	5	0	69	40	29	0
75 & Older	12	8	4	0	37	20	17	0
Unknown	7	3	2	2	30	18	8	4
TOTAL	157	116	39	2	1,347	830	513	4

Table 7 – 2

Pedestrian Crashes by Geographic Location

Category	Total	Urban	Percent of Total	Rural	Percent of Total
Total Crashes	1,561	1,400	89.69%	161	10.31%
Fatal Crashes	156	121	77.56%	35	22.44%
Injury Crashes	1,284	1,167	90.89%	117	9.11%
PDO Crashes	121	112	92.56%	9	7.44%
Pedestrians Killed	157	122	77.71%	35	22.29%
Pedestrians Injured	1,347	1,224	90.87%	123	9.13%

Table 7 – 3

Pedestrian Crash History

Year	Pedestrian Crashes	Percent of all Crashes	Pedestrians Killed	Percent of all Fatalities	Pedestrians Injured	Percent of all Injuries
2010	1,462	1.37%	154	20.29%	1,250	2.48%
2011	1,513	1.46%	154	18.62%	1,260	2.53%
2012	1,583	1.52%	131	15.96%	1,366	2.73%
2013	1,606	1.49%	160	18.85%	1,364	2.71%
2014	1,561	1.42%	157	20.28%	1,347	2.65%

Section 7: – Pedestrian and Pedalcyclist Crashes

Table 7 – 4

Pedestrians Killed by Age and Action

Pedestrian Action	Total	Age Group of Pedestrian											
		0-4	5-9	10-14	15-19	20-24	25-34	35-44	45-54	55-64	65-74	75 & Older	Unknown
Crossing Road	87	1	1	0	0	5	9	9	20	21	7	9	5
Walking With Traffic	8	0	0	0	2	0	4	1	0	1	0	0	0
Walking Against Traffic	3	0	0	0	0	0	0	0	0	1	2	0	0
Standing	9	0	0	0	1	1	0	0	1	3	2	1	0
Lying	4	0	0	0	0	1	1	0	0	0	1	1	0
Getting on/off Vehicle	0	0	0	0	0	0	0	0	0	0	0	0	0
Working on/pushing Veh	0	0	0	0	0	0	0	0	0	0	0	0	0
Working on Road	0	0	0	0	0	0	0	0	0	0	0	0	0
Other	18	0	2	0	1	2	2	1	2	4	4	0	0
Unknown	28	0	1	0	1	6	4	1	7	3	2	1	2
TOTAL	157	1	4	0	5	15	20	12	30	33	18	12	7

Table 7 – 5

Pedestrians Injured by Age and Action

Pedestrian Action	Total	Age Group of Pedestrian											
		0-4	5-9	10-14	15-19	20-24	25-34	35-44	45-54	55-64	65-74	75 & Older	Unknown
Crossing Road	840	20	48	52	135	93	109	97	124	84	41	28	9
Walking With Traffic	72	0	2	3	10	12	16	10	9	6	1	1	2
Walking Against Traffic	70	0	3	4	10	6	11	13	9	8	3	1	2
Standing	69	2	0	2	5	6	13	16	12	7	4	1	1
Lying	4	0	0	0	0	0	2	0	1	0	0	0	1
Getting on/off Vehicle	9	0	0	0	2	0	3	0	3	1	0	0	0
Working on/pushing Veh	5	0	0	0	0	0	2	0	1	0	1	1	0
Working on Road	5	0	0	0	0	0	1	3	1	0	0	0	0
Other	150	3	7	7	36	17	26	18	10	7	11	3	5
Unknown	123	3	4	6	17	16	19	11	15	12	8	2	10
TOTAL	1,347	28	64	74	215	150	202	168	185	125	69	37	30

Table 7 – 6

Pedestrian Physical Condition in Motor Vehicle Crashes

Type of Condition	Number of Pedestrians							
	Total	Percent of Total	In Fatal Crashes	Percent of Fatal	In Injury Crashes	Percent of Injury	In PDO Crashes	Percent of PDO
No Apparent Influence	1,107	67.46%	32	20.00%	987	72.68%	88	71.54%
Had Been Drinking	205	12.49%	65	40.63%	134	9.87%	6	4.88%
Appeared to be Under the Influence of Drugs*	23	1.40%	16	10.00%	6	0.44%	1	0.81%
Medications	2	0.12%	0	0.00%	2	0.15%	0	0.00%
Illness	3	0.18%	0	0.00%	3	0.22%	0	0.00%
Physical Impairment	7	0.43%	1	0.63%	5	0.37%	1	0.81%
Fell Asleep or Fatigued	1	0.06%	0	0.00%	1	0.07%	0	0.00%
Other	23	1.40%	3	1.88%	19	1.40%	1	0.81%
Unknown	270	16.45%	43	26.88%	201	14.80%	26	21.14%
TOTAL	1,641	100.00%	160	100.00%	1,358	100.00%	123	100.00%

*Illegal drugs or narcotics

Section 7: – Pedestrian and Pedalcyclist Crashes

Table 7 – 7

Lighting Conditions in Pedestrian Crashes

Type of Lighting Conditions	Number of Crashes			
	Total	Fatal	Injury	PDO
Daylight	847	31	739	77
Dawn	36	7	29	0
Dusk	60	8	49	3
Dark - Lighted	455	54	364	37
Dark - Not Lighted	134	34	96	4
Dark - Unknown Lighting	29	22	7	0
TOTAL	1,561	156	1,284	121

Table 7 – 8

Weather Conditions in Pedestrian Crashes

Type of Weather Conditions	Number of Crashes			
	Total	Fatal	Injury	PDO
Clear	1,377	113	1,153	111
Cloudy	105	10	87	8
Sleet/Hail	0	0	0	0
Rain	39	2	36	1
Snow	1	0	1	0
Severe Crosswinds	1	0	1	0
Blowing Sand, Soil, Dirt	2	0	2	0
Fog, Smog, Smoke	0	0	0	0
Blowing Snow	0	0	0	0
Other	0	0	0	0
Unknown	36	31	4	1
TOTAL	1,561	156	1,284	121

Table 7 – 9

Pedalcyclists Killed and Injured by Age and Gender

Age Group	Pedalcyclists Killed			Pedalcyclists Injured			
	Total	Male	Female	Total	Male	Female	Gender Unknown
0-4	0	0	0	2	2	0	0
5-9	2	1	1	32	24	8	0
10-14	0	0	0	96	73	23	0
15-19	0	0	0	221	168	53	0
20-24	1	1	0	220	149	71	0
25-34	1	0	1	251	189	62	0
35-44	3	2	1	191	137	54	0
45-54	4	3	1	214	163	51	0
55-64	7	7	0	138	113	25	0
65-74	7	6	1	59	47	12	0
75 & Older	3	2	1	20	18	2	0
Unknown	0	0	0	22	14	3	5
TOTAL	28	22	6	1,466	1,097	364	5

Section 7: – Pedestrian and Pedalcyclist Crashes

Table 7 – 10

Pedalcycle Crashes by Geographic Location

Category	Total	Urban	Percent of Total	Rural	Percent of Total
Total Crashes	1,742	1,576	90.47%	166	9.53%
Fatal Crashes	28	20	71.43%	8	28.57%
Injury Crashes	1,459	1,328	91.02%	131	8.98%
PDO Crashes	255	228	89.41%	27	10.59%
Pedalcyclists Killed	28	20	71.43%	8	28.57%
Pedalcyclists Injured	1,466	1,327	90.52%	139	9.48%

Table 7 – 11

Pedalcycle Crash History

Year	Pedalcycle Crashes	Percent of all Crashes	Pedalcyclists Killed	Percent of all Fatalities	Pedalcyclists Injured	Percent of all Injuries
2010	1,929	1.80%	19	2.50%	1,596	3.16%
2011	1,924	1.85%	23	2.78%	1,621	3.25%
2012	2,146	2.07%	18	2.19%	1,766	3.53%
2013	2,039	1.90%	29	3.42%	1,680	3.33%
2014	1,742	1.59%	28	3.62%	1,466	2.88%

Table 7 – 12

Lighting Conditions in Pedalcyclist Crashes

Type of Lighting Conditions	Number of Crashes			
	Total	Fatal	Injury	PDO
Daylight	1,321	15	1,127	179
Dawn	24	0	24	0
Dusk	58	1	43	14
Dark - Lighted	280	9	218	53
Dark - Not Lighted	45	0	38	7
Dark - Unknown Lighting	14	3	9	2
TOTAL	1,742	28	1,459	255

Table 7 – 13

Weather Conditions in Pedalcyclist Crashes

Type of Weather Conditions	Number of Crashes			
	Total	Fatal	Injury	PDO
Clear	1,574	22	1,315	237
Cloudy	127	2	113	12
Sleet/Hail	0	0	0	0
Rain	22	0	19	3
Snow	0	0	0	0
Severe Crosswinds	0	0	0	0
Blowing Sand, Soil, Dirt	2	0	2	0
Fog, Smog, Smoke	0	0	0	0
Blowing Snow	0	0	0	0
Other	0	0	0	0
Unknown	17	4	10	3
TOTAL	1,742	28	1,459	255

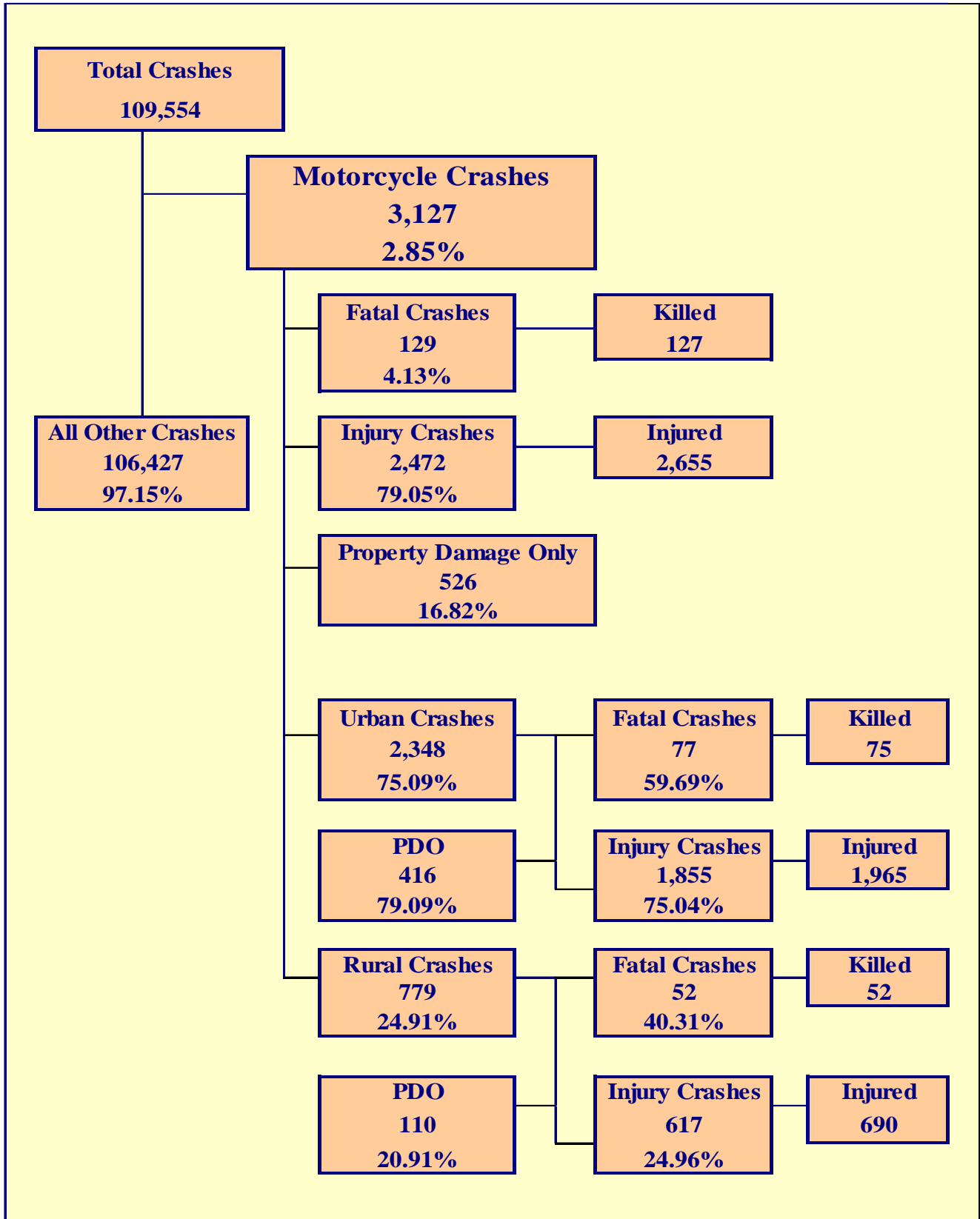
Section 7: – Pedestrian and Pedalcyclist Crashes

Table 7 – 14
Pedestrian Crashes by County

County	Number of Crashes				Number of Pedestrians	
	Total	Fatal	Injury	PDO	Killed	Injured
Apache	4	4	0	0	4	0
Cochise	18	1	15	2	1	16
Coconino	52	4	42	6	4	44
Gila	9	2	7	0	2	7
Graham	2	0	2	0	0	2
Greenlee	0	0	0	0	0	0
La Paz	1	0	1	0	0	1
Maricopa	1,062	101	873	88	101	921
Mohave	35	6	28	1	6	27
Navajo	17	6	10	1	6	11
Pima	240	15	206	19	15	215
Pinal	39	5	31	3	5	33
Santa Cruz	3	0	3	0	0	3
Yavapai	33	4	29	0	4	30
Yuma	46	8	37	1	9	37
TOTAL	1,561	156	1,284	121	157	1,347

Table 7 – 15
Pedalcyclist Crashes by County

County	Number of Crashes				Number of Pedalcyclists	
	Total	Fatal	Injury	PDO	Killed	Injured
Apache	1	0	1	0	0	1
Cochise	9	0	8	1	0	8
Coconino	79	1	60	18	1	61
Gila	8	0	7	1	0	7
Graham	1	1	0	0	1	0
Greenlee	0	0	0	0	0	0
La Paz	1	0	1	0	0	2
Maricopa	1,255	17	1,059	179	17	1,064
Mohave	24	0	21	3	0	21
Navajo	7	0	3	4	0	3
Pima	237	7	197	33	7	196
Pinal	53	0	45	8	0	44
Santa Cruz	2	0	1	1	0	1
Yavapai	26	1	23	2	1	25
Yuma	39	1	33	5	1	33
TOTAL	1,742	28	1,459	255	28	1,466



Section 8: – Motorcycle (MC) Crashes

Chart 8 – 1
MC Fatalities by Year

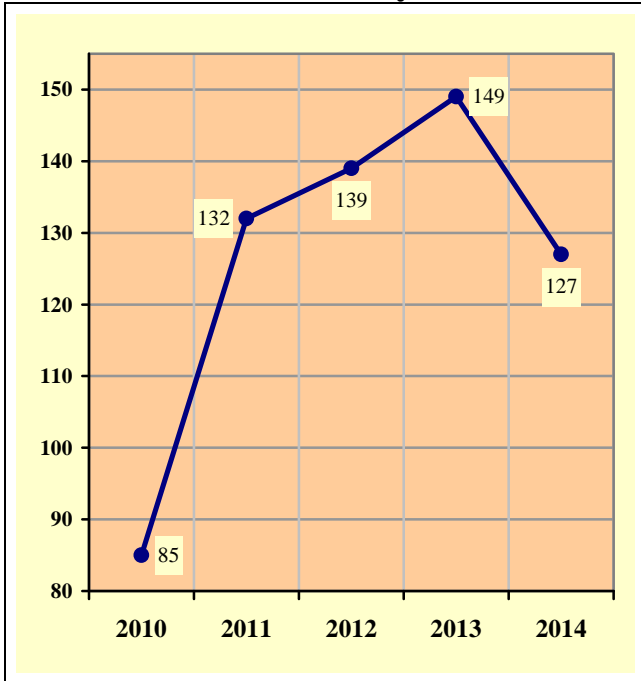
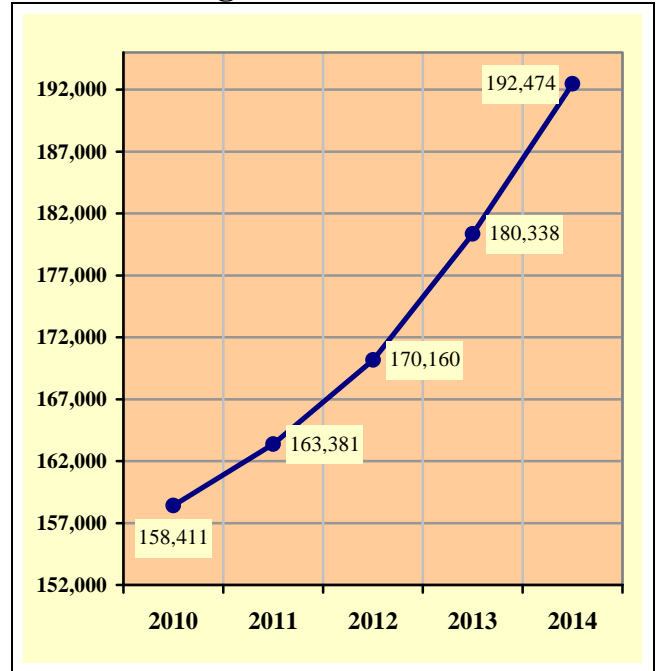


Chart 8 – 2
MC Registrations in Arizona



Total Point-in-Time of Registered Motorcycles at the end of
Calendar year 2014.
(Source: MVD - MV988 MV630419 Currently Registered Vehicles by County
Listing (motorcycle sub category), reports dated 12/31/14.)

Chart 8 – 3
Fatality Rate per Registered MC

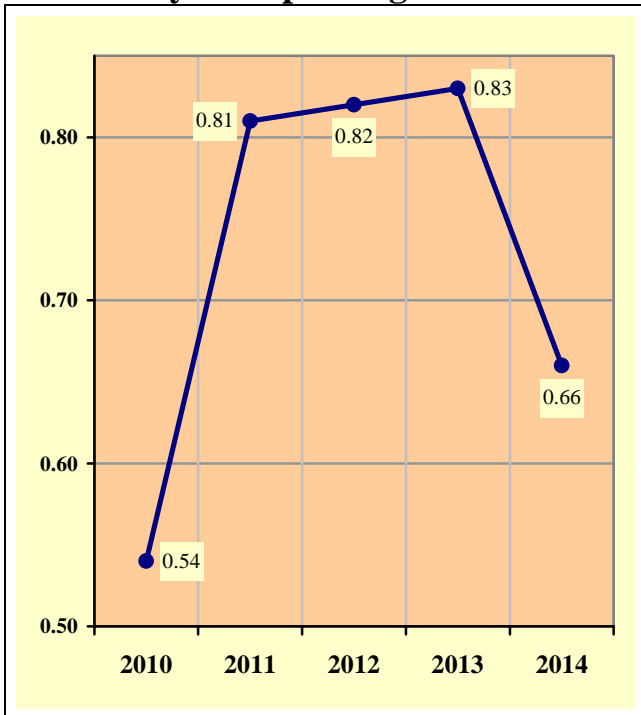
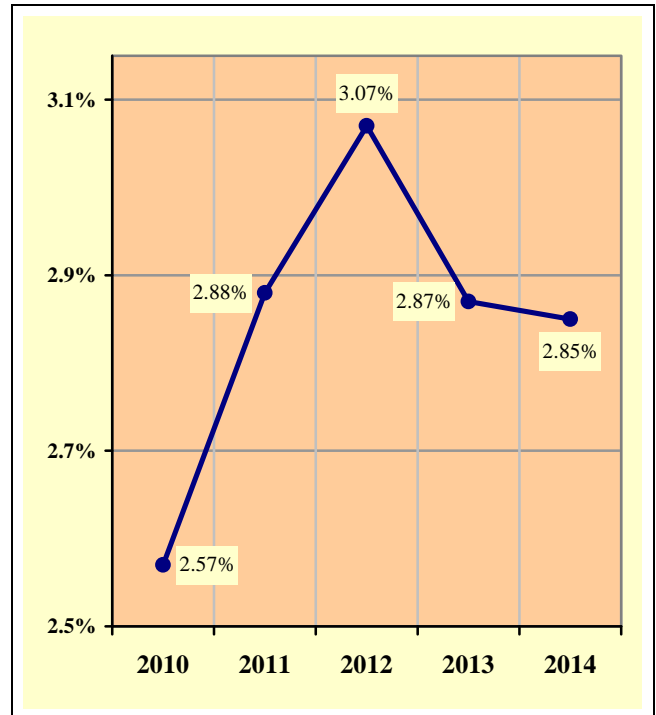


Chart 8 – 4
Percent of MC Crashes to All Crashes



Section 8: – Motorcycle (MC) Crashes

Table 8 – 1
MC Crashes by First Harmful Event

First Harmful Event Type	Number of Crashes			
	Total	Fatal	Injury	PDO
Collision with Motor Vehicle in Transport	1,363	68	972	323
Overturning	613	27	537	49
Collision with Pedestrian	5	1	4	0
Collision with Pedalcyclist	6	0	6	0
Collision with Animal	27	0	26	1
Collision with Fixed Object	316	30	259	27
Collision with Non-fixed Object*	54	1	27	26
Vehicle Fire or Explosion	1	0	0	1
Other Non-collision**	97	0	83	14
Unknown	645	2	558	85
TOTAL	3,127	129	2,472	526
*Includes Collision with Parked Vehicles, Trains, Railway Vehicles, and Work Zone Equipment				
**Includes Vehicle Immersion, Jackknife, and Cargo Loss or Shift				

Table 8 – 2
Lighting Conditions in MC Crashes

Type of Lighting Conditions	Number of Crashes			
	Total	Fatal	Injury	PDO
Daylight	2,226	76	1,763	387
Dawn	57	3	49	5
Dusk	106	5	81	20
Dark - Lighted	561	26	441	94
Dark - Not Lighted	163	13	132	18
Dark - Unknown Lighting	14	6	6	2
TOTAL	3,127	129	2,472	526

Table 8 – 3
Road Surface Conditions in MC Crashes

Type of Road Surface Condition	Number of Operators			
	Total	In Fatal Crashes	In Injury Crashes	In PDO Crashes
Dry	3,042	108	2,433	501
Wet	45	1	35	9
Snow	0	0	0	0
Slush	0	0	0	0
Ice/Frost	0	0	0	0
Water (standing or moving)	1	0	0	1
Sand	4	0	4	0
Mud, Dirt, Gravel	33	1	29	3
Oil	11	0	10	1
Other	4	0	4	0
Unknown	49	19	15	15
TOTAL	3,189	129	2,530	530

Section 8: – Motorcycle (MC) Crashes

Table 8 – 4

MC Crashes by Geographic Location

Category	Total	Urban	Percent of Total	Rural	Percent of Total
Total Crashes	3,127	2,348	75.09%	779	24.91%
Fatal Crashes	129	77	59.69%	52	40.31%
Injury Crashes	2,472	1,855	75.04%	617	24.96%
PDO Crashes	526	416	79.09%	110	20.91%
Persons Killed	127	75	59.06%	52	40.94%
Persons Injured	2,655	1,965	74.01%	690	25.99%

Table 8 – 5

Operator Involvement by Age in MC Crashes

Operator Age Group	Number of Operators							
	Total	Percent of Total	In Fatal Crashes	Percent of Fatal	In Injury Crashes	Percent of Injury	In PDO Crashes	Percent of PDO
15 & Under	9	0.28%	0	0.00%	9	0.36%	0	0.00%
16	12	0.38%	1	0.78%	11	0.43%	0	0.00%
17	25	0.78%	0	0.00%	22	0.87%	3	0.57%
18	61	1.91%	3	2.33%	48	1.90%	10	1.89%
19	91	2.85%	2	1.55%	76	3.00%	13	2.45%
20	87	2.73%	2	1.55%	69	2.73%	16	3.02%
21	86	2.70%	5	3.88%	66	2.61%	15	2.83%
22	88	2.76%	4	3.10%	71	2.81%	13	2.45%
23	111	3.48%	6	4.65%	90	3.56%	15	2.83%
24	88	2.76%	1	0.78%	76	3.00%	11	2.08%
25-34	682	21.39%	23	17.83%	585	23.12%	74	13.96%
35-44	476	14.93%	21	16.28%	372	14.70%	83	15.66%
45-54	588	18.44%	21	16.28%	464	18.34%	103	19.43%
55-64	484	15.18%	22	17.05%	399	15.77%	63	11.89%
65-74	178	5.58%	12	9.30%	140	5.53%	26	4.91%
75 & Older	26	0.82%	6	4.65%	14	0.55%	6	1.13%
Unknown	97	3.04%	0	0.00%	18	0.71%	79	14.91%
TOTAL	3,189	100.00%	129	100.00%	2,530	100.00%	530	100.00%

Table 8 – 6

MC Operator Physical Condition

Type of Condition	Number of Operators							
	Total	Percent of Total	In Fatal Crashes	Percent of Fatal	In Injury Crashes	Percent of Injury	In PDO Crashes	Percent of PDO
No Apparent Influence	2,693	84.45%	40	31.01%	2,202	87.04%	451	85.09%
Had Been Drinking	193	6.05%	40	31.01%	141	5.57%	12	2.26%
Appeared to be Under the Influence of Drugs*	23	0.72%	12	9.30%	9	0.36%	2	0.38%
Medications	2	0.06%	0	0.00%	1	0.04%	1	0.19%
Illness	12	0.38%	0	0.00%	12	0.47%	0	0.00%
Physical Impairment	1	0.03%	0	0.00%	1	0.04%	0	0.00%
Fell Asleep or Fatigued	4	0.13%	0	0.00%	3	0.12%	1	0.19%
Other	18	0.56%	1	0.78%	15	0.59%	2	0.38%
Unknown	243	7.62%	36	27.91%	146	5.77%	61	11.51%
TOTAL	3,189	100.00%	129	100.00%	2,530	100.00%	530	100.00%

*Illegal drugs or narcotics

Section 8: – Motorcycle (MC) Crashes

Table 8 – 7

MC Operators Involved in Fatal Crashes by License Status

License Status	2012		2013		2014	
	Number of Operators	Percent of Total	Number of Operators	Percent of Total	Number of Operators	Percent of Total
No license	6	4.17%	5	3.38%	2	1.55%
Invalid	25	17.36%	26	17.57%	22	17.05%
Valid	110	76.39%	112	75.68%	101	78.29%
Unknown	3	2.08%	5	3.38%	4	3.10%
TOTALS	144	100.00%	148	100.00%	129	100.00%
Note: Includes only motorcycle operators involved in fatal crashes						
Source: FARS Data Queries (http://www-fars.nhtsa.dot.gov)						

Table 8 – 8

MC Operator's Helmet Use

Severity of Injury	Helmet Used	Percent of Total	Helmet Not Used	Percent of Total	Unknown	Percent of Total	Total	Percent of Total
No Injury	259	15.81%	92	12.04%	184	23.38%	535	16.78%
Unknown Injury	6	0.37%	6	0.79%	50	6.35%	62	1.94%
Possible Injury	289	17.64%	99	12.96%	160	20.33%	548	17.18%
Non-Incapacitating Injury	716	43.71%	305	39.92%	260	33.04%	1,281	40.17%
Incapacitating Injury	317	19.35%	205	26.83%	118	14.99%	640	20.07%
Fatal Injury	51	3.11%	57	7.46%	15	1.91%	123	3.86%
TOTALS	1,638	100.00%	764	100.00%	787	100.00%	3,189	100.00%

Table 8 – 9

MC Passenger's Helmet Use

Severity of Injury	Helmet Used	Percent of Total	Helmet Not Used	Percent of Total	Unknown	Percent of Total	Total	Percent of Total
No Injury	20	20.83%	9	11.39%	13	22.41%	42	18.03%
Unknown Injury	0	0.00%	0	0.00%	1	1.72%	1	0.43%
Possible Injury	9	9.38%	13	16.46%	9	15.52%	31	13.30%
Non-Incapacitating Injury	42	43.75%	35	44.30%	24	41.38%	101	43.35%
Incapacitating Injury	22	22.92%	21	26.58%	11	18.97%	54	23.18%
Fatal Injury	3	3.13%	1	1.27%	0	0.00%	4	1.72%
TOTALS	96	100.00%	79	100.00%	58	100.00%	233	100.00%

Section 8: – Motorcycle (MC) Crashes

Table 8 – 10
MC Operators and Passengers Killed and Injured

Age of Victim	Persons Killed			Persons Injured			
	Total	Male	Female	Total	Male	Female	Gender Unknown
0-4	0	0	0	1	1	0	0
5-9	0	0	0	3	3	0	0
10-14	0	0	0	10	7	3	0
15-19	5	4	1	181	156	25	0
20-24	18	16	2	386	340	46	0
25-34	23	22	1	609	543	66	0
35-44	19	19	0	393	343	50	0
45-54	21	19	2	493	418	75	0
55-64	23	21	2	410	348	62	0
65-74	12	12	0	140	132	8	0
75 & Older	6	6	0	13	12	1	0
Unknown	0	0	0	16	11	2	3
TOTAL	127	119	8	2,655	2,314	338	3

Table 8 – 11
MC Operator Violations

Type of Violation or Behavior	Number of Operators							
	Total	Percent of Total	In Fatal Crashes	Percent of Fatal	In Injury Crashes	Percent of Injury	In PDO Crashes	Percent of PDO
No Improper Action	1,474	46.22%	33	25.58%	1,161	45.89%	280	52.83%
Speed too Fast for Conditions	776	24.33%	35	27.13%	643	25.42%	98	18.49%
Exceeded Lawful Speed	61	1.91%	9	6.98%	51	2.02%	1	0.19%
Failed to Yield Right-Of-Way	64	2.01%	1	0.78%	48	1.90%	15	2.83%
Followed Too Closely	93	2.92%	1	0.78%	68	2.69%	24	4.53%
Ran Stop Sign	12	0.38%	2	1.55%	10	0.40%	0	0.00%
Disregarded Traffic Signal	35	1.10%	1	0.78%	30	1.19%	4	0.75%
Made Improper Turn	30	0.94%	0	0.00%	23	0.91%	7	1.32%
Drove in Opposing Lane	29	0.91%	2	1.55%	26	1.03%	1	0.19%
Knowingly Operated with Faulty or Missing Equipment	11	0.34%	0	0.00%	10	0.40%	1	0.19%
Required Motorcycle Safety Equipment Not Used	7	0.22%	1	0.78%	6	0.24%	0	0.00%
Passed in No-Passing Zone	9	0.28%	0	0.00%	7	0.28%	2	0.38%
Unsafe Lane Change	48	1.51%	2	1.55%	32	1.26%	14	2.64%
Failed to Keep in Proper Lane	82	2.57%	8	6.20%	68	2.69%	6	1.13%
Disregarded Pavement Markings	5	0.16%	0	0.00%	4	0.16%	1	0.19%
Other Unsafe Passing	20	0.63%	0	0.00%	15	0.59%	5	0.94%
Inattention/Distracted	75	2.35%	3	2.33%	60	2.37%	12	2.26%
Electronic Communications Device	0	0.00%	0	0.00%	0	0.00%	0	0.00%
Other	109	3.42%	4	3.10%	90	3.56%	15	2.83%
Unknown	249	7.81%	27	20.93%	178	7.04%	44	8.30%
TOTAL	3,189	100.00%	129	100.00%	2,530	100.00%	530	100.00%

Section 8: – Motorcycle (MC) Crashes

Chart 8 – 5

All MC Crashes vs. Fatal MC Crashes by Time of Day - Weekdays

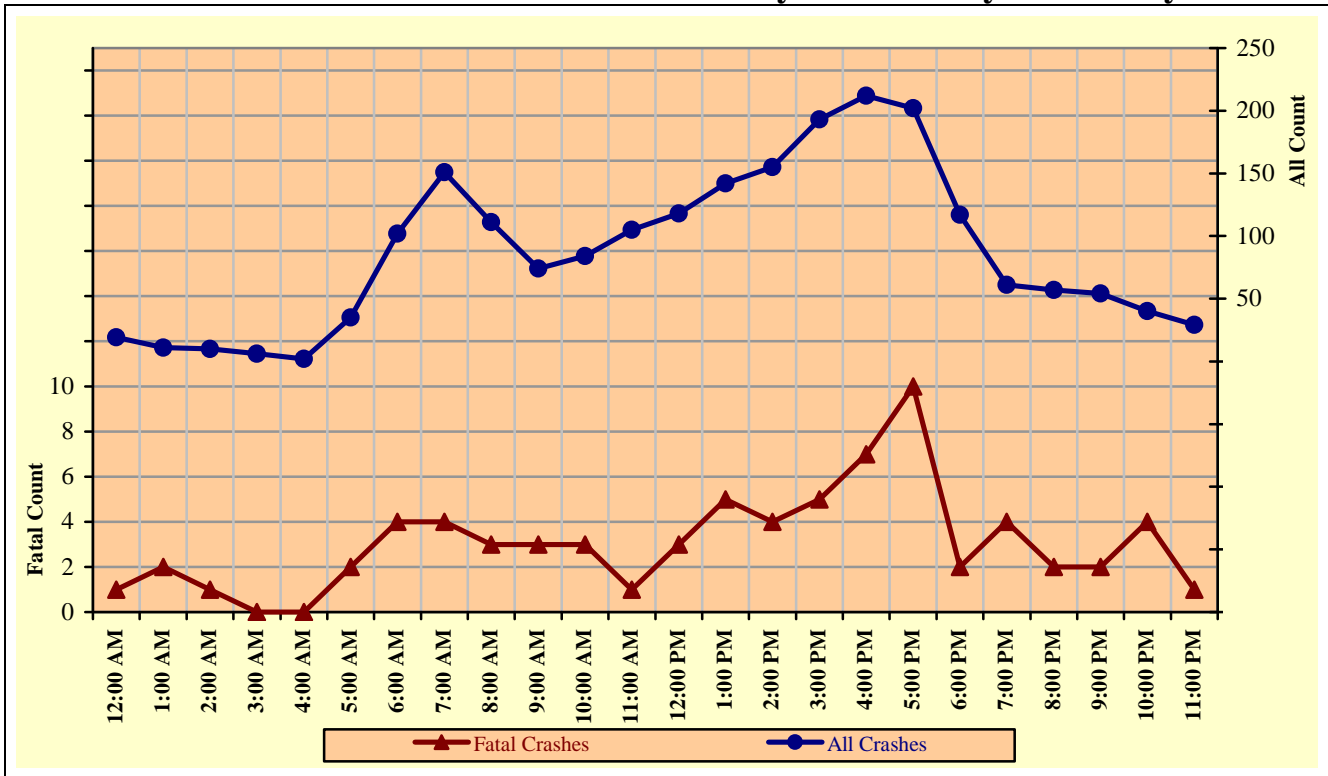
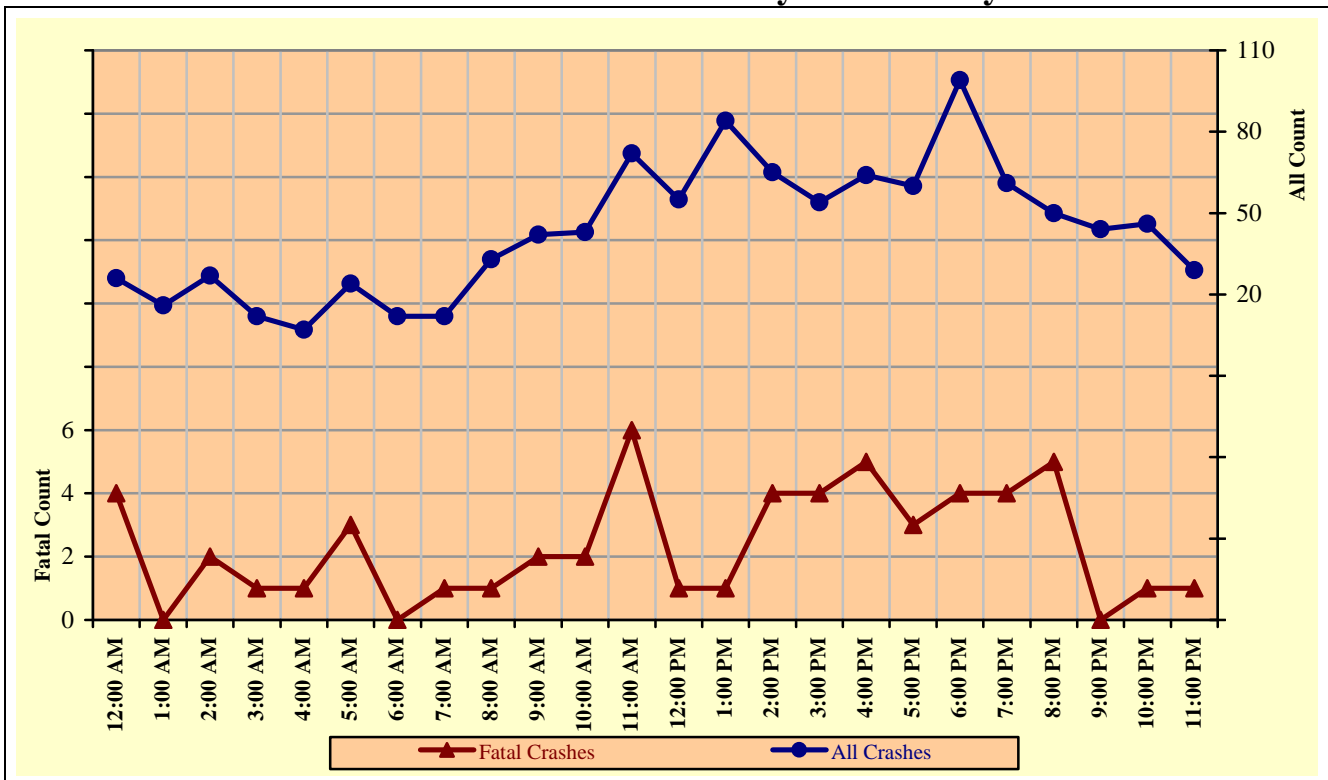


Chart 8 – 6

All MC Crashes vs. Fatal MC Crashes by Time of Day - Weekends



Section 8: – Motorcycle (MC) Crashes

Chart 8 – 7
All MC Crashes vs. Fatal MC Crashes by Day of Week

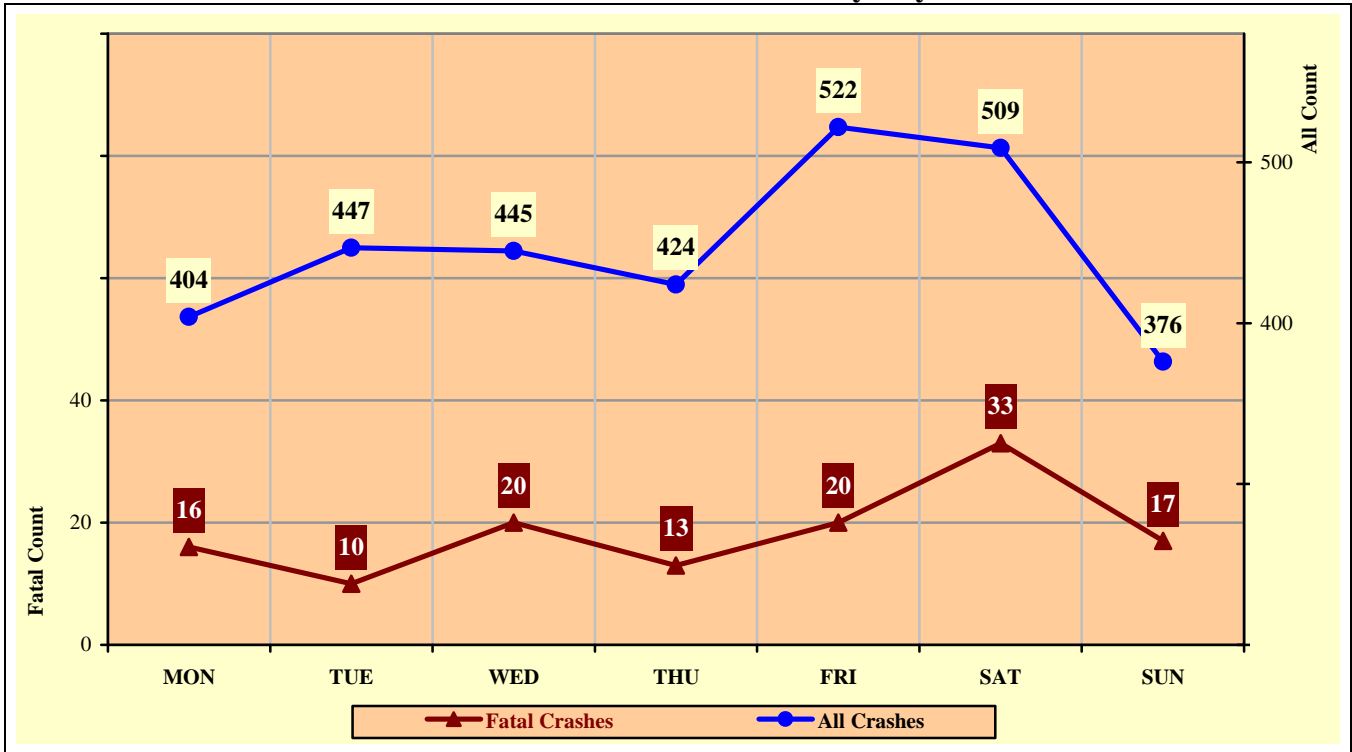
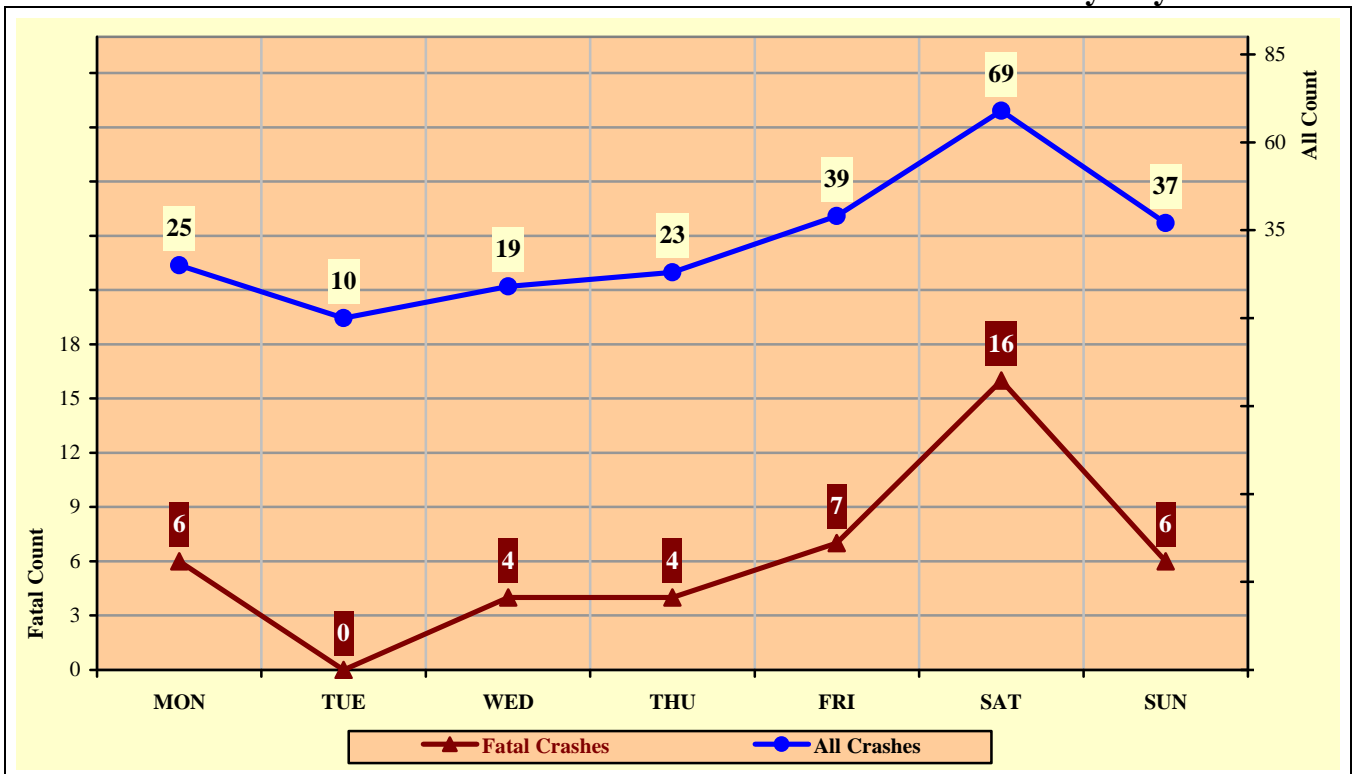


Chart 8 – 8
Alcohol Related MC Crashes vs. Fatal Alcohol Related MC Crashes by Day of Week



Section 8: – Motorcycle (MC) Crashes

Table 8 – 12

MC Crashes by Hour and Day of Week

Hour Beginning	Total Crashes		Monday		Tuesday		Wednesday		Thursday		Friday		Saturday		Sunday		Weekdays		Weekends	
	All	Fatal	All	Fatal	All	Fatal	All	Fatal	All	Fatal	All	Fatal	All	Fatal	All	Fatal	All	Fatal	All	Fatal
12:00 AM	45	5	4	0	4	0	2	0	6	0	7	1	10	1	12	3	19	1	26	4
1:00 AM	27	2	2	0	0	0	4	1	3	0	4	1	7	0	7	0	11	2	16	0
2:00 AM	37	3	1	0	4	0	2	0	0	0	4	1	16	2	10	0	10	1	27	2
3:00 AM	18	1	3	0	2	0	0	0	3	0	1	0	6	1	3	0	6	0	12	1
4:00 AM	9	1	1	0	0	0	2	0	0	0	0	0	4	1	2	0	2	0	7	1
5:00 AM	59	5	9	1	7	1	15	0	8	0	5	1	10	1	5	1	35	2	24	3
6:00 AM	114	4	26	1	20	1	17	1	22	0	17	1	9	0	3	0	102	4	12	0
7:00 AM	163	5	31	1	36	0	36	1	17	1	31	1	7	1	5	0	151	4	12	1
8:00 AM	144	4	18	1	23	0	30	2	22	0	18	0	20	0	13	1	111	3	33	1
9:00 AM	116	5	9	0	14	0	14	0	17	0	20	3	21	1	21	1	74	3	42	2
10:00 AM	127	5	19	1	20	0	14	0	16	1	15	1	23	2	20	0	84	3	43	2
11:00 AM	177	7	21	0	20	0	20	0	22	1	22	0	40	4	32	2	105	1	72	6
12:00 PM	173	4	16	1	32	1	20	0	22	0	28	1	29	0	26	1	118	3	55	1
1:00 PM	226	6	29	0	32	2	25	2	32	1	24	0	50	1	34	0	142	5	84	1
2:00 PM	220	8	26	1	23	0	35	1	33	2	38	0	30	0	35	4	155	4	65	4
3:00 PM	247	9	33	0	40	1	34	3	29	1	57	0	31	3	23	1	193	5	54	4
4:00 PM	276	12	39	3	43	1	46	2	41	0	43	1	35	5	29	0	212	7	64	5
5:00 PM	262	13	33	3	45	1	35	1	33	2	56	3	27	1	33	2	202	10	60	3
6:00 PM	216	6	22	0	37	0	27	1	31	1	38	2	40	2	21	0	117	2	99	4
7:00 PM	122	8	11	2	13	0	17	2	20	0	20	1	31	2	10	1	61	4	61	4
8:00 PM	107	7	19	1	10	0	16	1	12	0	21	1	19	4	10	0	57	2	50	5
9:00 PM	98	2	14	0	9	0	16	1	15	1	21	0	12	0	11	0	54	2	44	0
10:00 PM	86	5	5	0	11	2	11	1	13	1	18	1	19	0	9	0	40	4	46	1
11:00 PM	58	2	13	0	2	0	7	0	7	1	14	0	13	1	2	0	29	1	29	1
TOTAL	3,127	129	404	16	447	10	445	20	424	13	522	20	509	33	376	17	2,090	73	1,037	56

Crashes during Weekends accounted for 33.16% of all MC crashes and 43.41% of Fatal MC Crashes.

Crashes during Weekdays accounted for 66.84% of all MC crashes and 56.59% of Fatal MC Crashes.

Section 8: – Motorcycle (MC) Crashes

Table 8 – 13

MC Crashes by County

County	Number of Crashes				Number of Persons	
	Total	Fatal	Injury	PDO	Killed	Injured
Apache	7	1	6	0	1	7
Cochise	41	0	30	11	0	33
Coconino	95	6	74	15	6	85
Gila	44	2	35	7	2	39
Graham	9	1	7	1	1	8
Greenlee	9	0	6	3	0	7
La Paz	14	1	11	2	1	12
Maricopa	2,030	74	1,586	370	73	1,680
Mohave	124	6	100	18	6	114
Navajo	12	0	9	3	0	9
Pima	344	11	288	45	11	311
Pinal	150	9	123	18	8	135
Santa Cruz	8	2	5	1	3	5
Yavapai	164	10	134	20	10	147
Yuma	76	6	58	12	5	63
TOTAL	3,127	129	2,472	526	127	2,655

Table 8 – 14

Manner of Collision in MC Crashes

Manner of Collision Type	Number of Crashes							
	Total	Percent of All Crashes	Fatal	Percent of Fatal Crashes	Injury	Percent of Injury Crashes	PDO	Percent of PDO Crashes
Angle	301	15.70%	14	17.28%	237	16.86%	50	11.63%
Left Turn	467	24.36%	29	35.80%	381	27.10%	57	13.26%
Rear End	673	35.11%	18	22.22%	459	32.65%	196	45.58%
Head-On	40	2.09%	2	2.47%	33	2.35%	5	1.16%
Sideswipe (same)	260	13.56%	2	2.47%	178	12.66%	80	18.60%
Sideswipe (opposite)	26	1.36%	1	1.23%	20	1.42%	5	1.16%
Rear to Side	8	0.42%	0	0.00%	3	0.21%	5	1.16%
Rear to Rear	3	0.16%	0	0.00%	2	0.14%	1	0.23%
Other	120	6.26%	14	17.28%	80	5.69%	26	6.05%
Unknown	19	0.99%	1	1.23%	13	0.92%	5	1.16%
TOTAL	1,917	100.00%	81	100.00%	1,406	100.00%	430	100.00%

Note: Includes only multi-vehicle MC crashes

Acknowledgements

Special gratitude to our other providers of data and information including:

National Highway Transportation Safety Administration

Health Status and Vital Statistics Section, Arizona Department of Health Services

The Information Technology Group, Arizona Department of Transportation

Motor Vehicle Division, Arizona Department of Transportation

Multimodal Planning Division, Data Bureau, Arizona Department of Transportation

The National Safety Council