

ARIZONA

MOTOR VEHICLE CRASH FACTS

2016



2016 Motor Vehicle Crash Facts for the State of Arizona

Prepared by:
The Arizona Department of Transportation
Transportation Systems Management and Operations

Publication Date: February 1, 2018



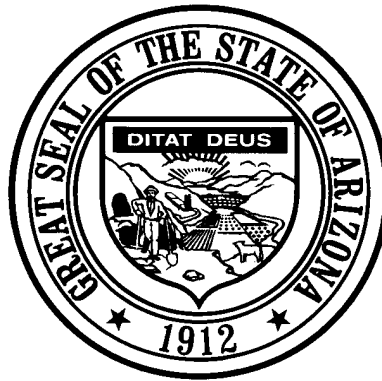
This publication is an annual statistical review of the motor vehicle crashes in the State of Arizona for the calendar year 2016. The results are compiled from Arizona Traffic Crash Reports submitted to the Arizona Department of Transportation by state, county, city, tribal, and other law enforcement agencies. Specific inquiries regarding the data in this report should be directed to:

The Arizona Department of Transportation
Transportation Systems Management and Operations
Traffic Safety Section
1615 West Jackson Street
Phoenix, AZ 85007

E-mail: azcrashfacts@azdot.gov

In order to provide the most current information, preliminary data is utilized when necessary. For this reason, previous or future reports may differ slightly and we encourage you to refer to the latest issue of Motor Vehicle Crash Facts.

This issue as well as previous issues of this publication may be viewed and downloaded from ADOT's Web Site at:
www.azdot.gov/crashfacts



Douglas A. Ducey
Governor

Arizona Department of Transportation

John S. Halikowski
Director

State Transportation Board

Deanna L. Beaver – District 6
Chairwoman

William F. Cuthbertson – District 3
Vice Chairman

Members

Joseph E. La Rue – District 1

Jack Sellers – District 1

Michael S. Hammond – District 2

Steve Stratton – District 4

Arlando S. Teller – District 5

OVERVIEW

Section 1: – Highlights and Historical Trends..... 1

Section 2: – Geographic Location 9

Section 3: – Crash Descriptions..... 17

Section 4: – Safety Devices 23

Section 5: – Motor Vehicle and Driver Descriptions..... 26

Section 6: – Alcohol Related Crashes..... 33

Section 7: – Pedestrian and Pedalcyclist Crashes..... 42

Section 8: – Motorcycle (MC) Crashes 48

Acknowledgements 58

2016 Arizona Crash Facts Summary

Table of Contents

Section 1: Highlights and Historical Trends	1
Arizona Crash Facts Summary and Comparison.....	2
Arizona at a Glance – 2016.....	2
Licensed Drivers, Motor Vehicle Registration and Crash History in Arizona.....	3
Historical Trends – VMT and Rates.....	3
Statewide Economic Loss Due to Motor Vehicle Crashes.....	4
Average Economic Cost per Incident.....	4
Traffic Crashes in Arizona by Year.....	5
Victims of Motor Vehicle Crashes.....	6
Fatalities by Person Type 2012-2016.....	6
Young Drivers (age 15-24) killed in crashes 2012-2016	6
Vehicle Miles Traveled.....	7
Arizona Fatality Rate vs. Injury Rate.....	7
Traffic Fatalities by Geographic Region.....	7
Traffic Injuries by Geographic Region.....	7
Holiday Crash Statistics.....	8
Section 2: Geographic Location	9
Crash Severity by First Harmful Event Statewide.....	10
Crashes by County.....	10
Crash Severity by First Harmful Event in Urban Areas.....	11
Crash Severity by First Harmful Event in Rural Areas.....	11
Analysis by Jurisdiction.....	12
Total Fatalities by County for 2015 and 2016.....	15
Urban and Rural Crashes by Day of Week.....	16
Urban and Rural Fatal Crashes by Day of Week.....	16
All Urban and Rural Crashes vs. Urban and Rural Fatal Crashes by Month.....	16
Section 3: Crash Descriptions	17
Manner of Collision in Multi-Vehicle Crashes.....	18
Lighting Conditions.....	18
Weather Conditions.....	18
Road Surface Conditions.....	19
Roadway Grade.....	19
Roadway Alignment.....	19
All Crashes vs. Fatal Crashes by Time of Day - Weekdays.....	20
All Crashes vs. Fatal Crashes by Time of Day - Weekends.....	20
Crashes by Day of Week.....	21
Fatal Crashes by Day of Week.....	21
All Crashes vs. Fatal Crashes by Month.....	21
Crashes by Hour and Day of Week.....	22
Section 4: Safety Devices	23
Child Safety Device Usage (less than five years old).....	24
Driver Safety Device Usage.....	24
Passenger Safety Device Usage.....	24
Driver Safety Device Usage by Gender.....	25
Driver Safety Device Usage by Age.....	25
Section 5: Motor Vehicle and Driver Descriptions	26
Arizona Motor Vehicle Registrations.....	27
Motor Vehicle Crash Involvement by Vehicle Type.....	27

2016 Arizona Crash Facts Summary

Hit and Run Drivers Involved in Crashes.....	28
Gender of Drivers Involved in Crashes.....	28
License Status of Drivers Involved in Crashes.....	28
Passengers Killed and Injured by Age and Gender.....	28
Drivers and Passengers Killed and Injured by Vehicle Type.....	29
Drivers Killed and Injured by Age and Gender.....	29
Licensed Drivers in Arizona by Age.....	30
Driver Involvement by Age.....	30
Driver Violations.....	31
Driver Physical Condition.....	31
Distracted Driving Behavior.....	32
Secondary Crashes.....	32
Section 6: Alcohol Related Crashes.....	33
Economic Loss Due to Alcohol Related Crashes in Arizona for 2016.....	34
Alcohol Related Crash History.....	34
Manner of Collision in Alcohol Related Crashes.....	34
Alcohol Related Crashes by First Harmful Event.....	35
Alcohol Related Crashes by Vehicle Type.....	35
Lighting Conditions in Alcohol Related Crashes.....	36
Road Surface Conditions in Alcohol Related Crashes.....	36
Gender of Drivers Involved in Alcohol Related Crashes.....	36
Driver Involvement by Age in Alcohol Related Crashes.....	37
When Alcohol Related Crashes Occurred in 2016.....	37
Safety Device Usage for Drinking Drivers.....	37
Persons Killed and Injured in Alcohol Related Crashes.....	38
Alcohol Related Crashes by County.....	38
All Alcohol Related Crashes vs. Fatal Alcohol Related Crashes by Day of Week.....	39
All Alcohol Related Crashes vs. Fatal Alcohol Related Crashes by Month.....	39
All Alcohol Related Crashes vs. Fatal Alcohol Related Crashes - Weekdays.....	40
All Alcohol Related Crashes vs. Fatal Alcohol Related Crashes - Weekends.....	40
Alcohol Related Crashes by Hour and Day of Week.....	41
Section 7: Pedestrian and Pedalcyclist Crashes.....	42
Pedestrians Killed and Injured By Age and Gender.....	43
Pedestrian Crashes by Geographic Location.....	43
Pedestrian Crash History.....	43
Pedestrians Killed by Age and Action.....	44
Pedestrians Injured by Age and Action.....	44
Pedestrian Physical Condition in Motor Vehicle Crashes.....	44
Lighting Conditions in Pedestrian Crashes.....	45
Weather Conditions in Pedestrian Crashes.....	45
Pedalcyclists Killed and Injured by Age and Gender.....	45
Pedalcycle Crashes by Geographic Location.....	46
Pedalcycle Crash History.....	46
Lighting Conditions in Pedalcyclist Crashes.....	46
Weather Conditions in Pedalcyclist Crashes.....	46
Pedestrian Crashes by County.....	47
Pedalcyclist Crashes by County.....	47
Section 8: Motorcycle (MC) Crashes.....	48
MC Fatalities by Year.....	49
MC Registrations in Arizona.....	49
Fatality Rate per Registered MC.....	49
Percent of MC Crashes to All Crashes.....	49
MC Crashes by First Harmful Event.....	50
Lighting Conditions in MC Crashes.....	50
Road Surface Conditions in MC Crashes.....	50

2016 Arizona Crash Facts Summary

MC Crashes by Geographic Location.....	51
Operator Involvement by Age in MC Crashes.....	51
MC Operator Physical Condition.....	51
Helmet Use by Gender.....	52
MC Operator's Helmet Use.....	52
MC Passenger's Helmet Use.....	52
MC Operators and Passengers Killed and Injured.....	53
MC Operator Violations.....	53
All MC Crashes vs. Fatal MC Crashes by Time of Day - Weekdays.....	54
All MC Crashes vs. Fatal MC Crashes by Time of Day - Weekends.....	54
All MC Crashes vs. Fatal MC Crashes by Day of Week.....	55
Alcohol Related MC Crashes vs. Fatal Alcohol Related MC Crashes by Day of Week.....	55
MC Crashes by Hour and Day of Week.....	56
MC Crashes by County.....	57
Manner of Collision in MC Crashes.....	57
Acknowledgements.....	58

2016 Arizona Crash Facts Summary

BREAKDOWN OF ALL CRASHES IN ARIZONA

TOTAL	126,987
FATAL	856
INJURY	38,616
PROPERTY DAMAGE ONLY	87,515
URBAN	103,339
RURAL	23,648
ALCOHOL RELATED	4,942
PEDESTRIAN	1,643
PEDALCYCLE	1,479
MOTORCYCLE	3,115
SINGLE VEHICLE	20,073
MULTI-VEHICLE	106,914

BREAKDOWN OF FATAL CRASHES IN ARIZONA

TOTAL	856
ALCOHOL RELATED	267
URBAN	489
RURAL	367
SINGLE VEHICLE	295
MULTI-VEHICLE	561
ALCOHOL RELATED SINGLE VEHICLE	99
ALCOHOL RELATED MULTI-VEHICLE	168

BREAKDOWN OF PERSONS KILLED AND INJURED

TYPE	KILLED	INJURED
IN ALL CRASHES	952	56,753
IN ALCOHOL RELATED CRASHES	302	3,324
IN URBAN CRASHES	518	46,181
IN RURAL CRASHES	434	10,572
SPEED RELATED*	314	23,126
USING SAFETY DEVICE	270	46,307
NOT USING SAFETY DEVICE	333	3,320
DRIVERS AGE 24 OR YOUNGER	100	8,885
DRINKING DRIVERS AGE 24 OR YOUNGER	30	367

BREAKDOWN OF CRASHES BY TIME

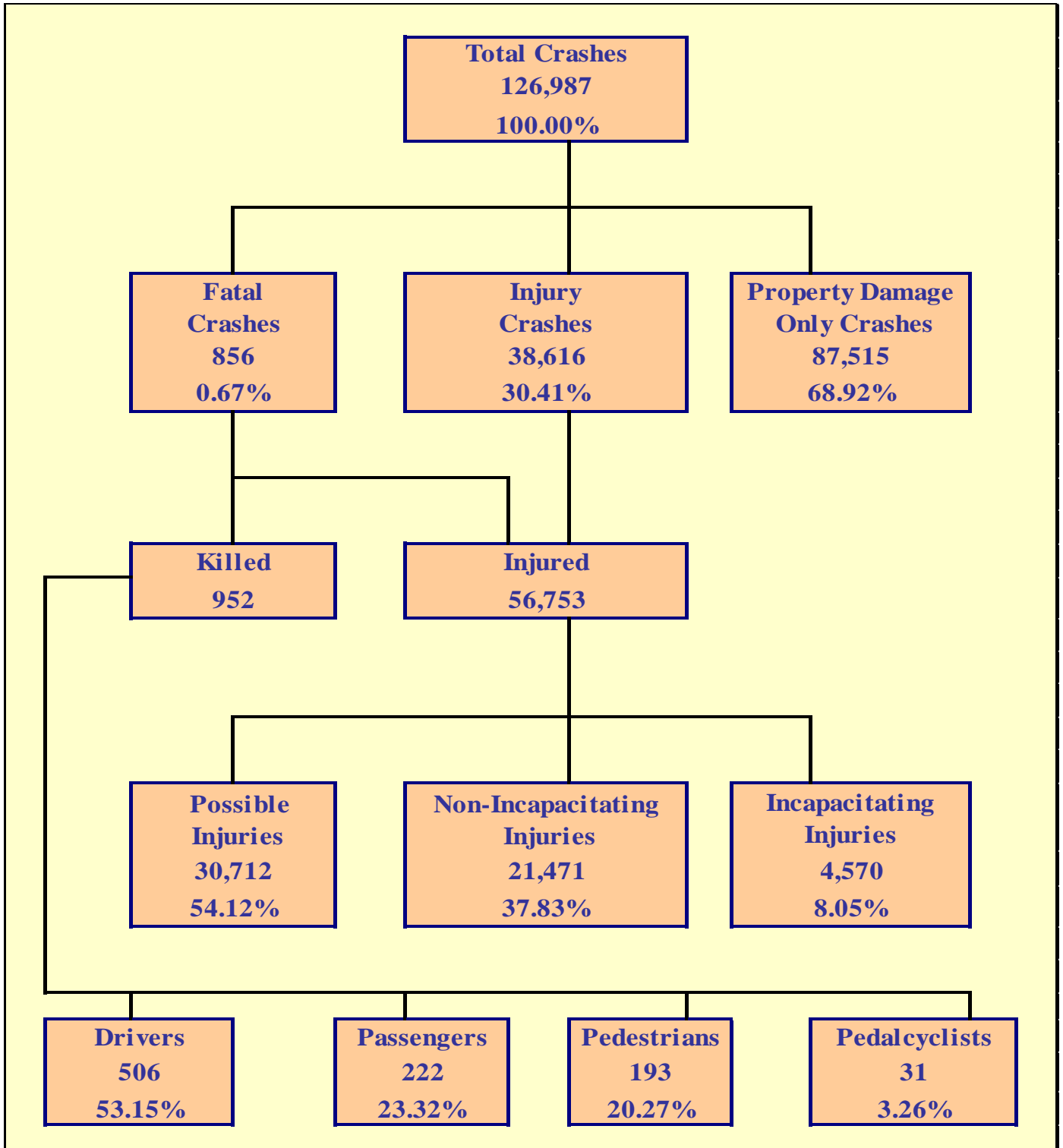
PEAK MONTH FOR ALL CRASHES	MARCH
PEAK DAY FOR ALL CRASHES	FRIDAY
PEAK HOUR FOR ALL CRASHES	4 PM - 5 PM
PEAK HOUR FOR FATAL CRASHES	7 PM - 8 PM
PEAK DAY FOR FATAL CRASHES	SATURDAY
PEAK DATE FOR ALL CRASHES IN 2016	JANUARY 7TH (577 CRASHES)
PEAK DATE FOR FATAL CRASHES IN 2016	NOVEMBER 8TH (8 CRASHES)
PEAK HOUR FOR ALCOHOL RELATED CRASHES	2 AM - 3 AM
PEAK DAY FOR MOTORCYCLE CRASHES	SATURDAY
PEAK HOUR FOR ALL MOTORCYCLE CRASHES	4 PM - 5 PM

OTHER FACTS

MOST COMMON MANNER OF COLLISION	REAR END
MOST COMMON DRIVER VIOLATION	SPEED TOO FAST FOR CONDITIONS

*Note: These numbers represent the total number of fatalities and injuries in crashes where the violation "speed too fast for conditions" or "exceeded lawful speed" was marked on the crash form.

THIS PAGE LEFT BLANK FOR PRINTING PURPOSES



Section 1: – Highlights and Historical Trends

Table 1 – 1

Arizona Crash Facts Summary and Comparison

Category	2015	2016	Percent Change
Total Crashes	116,821	126,987	8.70%
Total Fatalities	897	952	6.13%
Total Injuries	53,716	56,753	5.65%
Alcohol Related Fatalities	329	302	-8.21%
Alcohol Related Injuries	3,245	3,324	2.43%
Urban Fatalities	468	518	10.68%
Urban Injuries	43,514	46,181	6.13%
Rural Fatalities	429	434	1.17%
Rural Injuries	10,202	10,572	3.63%
MC Operator and Passenger Fatalities	134	145	8.21%
MC Operator and Passenger Injuries	2,527	2,602	2.97%
Pedestrians Fatalities	163	193	18.40%
Pedestrians Injuries	1,246	1,458	17.01%
Pedalcyclist Fatalities	28	31	10.71%
Pedalcyclist Injuries	1,278	1,350	5.63%
Millions of vehicle miles traveled (VMT)	65,045	65,606	0.86%
Fatalities per 100 million VMT	1.38	1.45	5.22%
Injuries per 100 million VMT	82.58	86.51	4.75%

Arizona at a Glance – 2016

- Approximately **2.61** persons were killed each day.
- One person was killed every **9.21** hours.
- There were **155.38** persons injured every day.
- One person was injured every **9.27** minutes.
- Alcohol Related crashes accounted for **3.89%** of all crashes and **31.19%** of all fatal crashes.
- Of all alcohol related crashes, **78.71%** occurred in Urban areas and **21.29%** occurred in Rural areas, while **66.67%** of all alcohol related fatal crashes occurred in Urban areas and **33.33%** occurred in Rural areas.
- Single vehicle crashes accounted for **15.81%** of all crashes and **34.46%** of all fatal crashes.
- Of all Pedestrian crashes, **11.75%** were fatal while **2.10%** of Pedalcycle crashes were fatal.
- Crashes which occurred during daylight hours (6:00 a.m. to 6:00 p.m.) accounted for **72.4%** of all crashes.
- Motor vehicle crashes resulted in **\$10.707** billion in economic losses to Arizona.
- Children age 14 and younger accounted for **36** fatalities and **3,597** injuries in motor vehicle crashes.

Section 1: – Highlights and Historical Trends

Table 1 – 2
Licensed Drivers, Motor Vehicle Registration
and Crash History in Arizona

Calendar Year	Total Crashes	Fatal Crashes	Injury Crashes	Property Damage Only Crashes	Total Persons Killed	Total Persons Injured	Total Licensed Drivers	Total Registered Vehicles
2002	134,893	984	46,394	87,515	1,132	74,548	3,668,704	4,089,662
2003	131,207	978	45,293	84,936	1,125	72,113	3,819,823	4,193,262
2004	138,898	998	46,788	91,112	1,159	73,686	3,784,365	4,364,857
2005	140,574	1,049	45,826	93,699	1,193	71,083	3,963,005	4,556,448
2006	143,504	1,126	45,395	96,983	1,301	70,013	4,091,789	4,748,957
2007	141,193	952	43,560	96,681	1,071	66,062	4,212,393	4,848,162
2008	120,557	843	37,515	82,199	938	56,539	4,360,711	4,842,188
2009	107,149	709	33,506	72,934	806	50,809	4,434,719	4,787,350
2010	106,900	695	33,419	72,786	759	50,463	4,537,653	4,805,904
2011	103,958	756	33,223	69,979	827	49,856	4,634,405	4,855,014
2012	103,940	738	33,594	69,608	821	50,086	4,736,517	4,969,620
2013	107,575	782	34,136	72,657	849	50,439	4,826,903	5,130,780
2014	109,684	709	34,524	74,451	774	51,022	4,922,676	5,300,980
2015	116,821	811	36,231	79,779	897	53,716	5,025,811	5,487,058
2016	126,987	856	38,616	87,515	952	56,753	5,135,262	5,677,208

Table 1 – 3
Historical Trends – VMT and Rates

Calendar Year	Arizona Fatality Rate	Arizona Injury Rate	Arizona Traffic Fatalities	Estimated Motor Vehicle Miles Traveled	Arizona Fatal Crash Rate
2012	1.37	83.30	821	60,129	1.23
2013	1.40	83.25	849	60,586	1.29
2014	1.24	81.46	774	62,631	1.13
2015	1.38	82.58	897	65,045	1.25
2016	1.45	86.51	952	65,606	1.30

Vehicle miles traveled are shown in million miles and rates per 100 million miles

Section 1: – Highlights and Historical Trends

Statewide Economic Loss Due to Motor Vehicle Crashes

Fatalities	\$5,521,600,000
Incapacitating Injuries	\$1,828,000,000
Non-Incapacitating Injuries	\$1,717,680,000
Possible Injuries	\$1,289,904,000
Property Damage Only	\$350,060,000
TOTAL	\$10,707,244,000

Table 1 – 4

Estimated Economic Loss by County

County	Cost of Traffic Crashes			
	Fatalities	Injuries	PDO	Total
Apache	\$ 208,800,000	\$ 26,616,000	\$ 1,052,000	\$ 236,468,000
Cochise	\$ 150,800,000	\$ 58,888,000	\$ 3,932,000	\$ 213,620,000
Coconino	\$ 290,000,000	\$ 121,080,000	\$ 12,344,000	\$ 423,424,000
Gila	\$ 110,200,000	\$ 40,880,000	\$ 2,112,000	\$ 153,192,000
Graham	\$ 29,000,000	\$ 13,084,000	\$ 640,000	\$ 42,724,000
Greenlee	\$ 5,800,000	\$ 6,154,000	\$ 300,000	\$ 12,254,000
La Paz	\$ 104,400,000	\$ 30,816,000	\$ 1,176,000	\$ 136,392,000
Maricopa	\$ 2,778,200,000	\$ 3,301,562,000	\$ 259,324,000	\$ 6,339,086,000
Mohave	\$ 307,400,000	\$ 151,344,000	\$ 8,576,000	\$ 467,320,000
Navajo	\$ 174,000,000	\$ 51,126,000	\$ 3,000,000	\$ 228,126,000
Pima	\$ 649,600,000	\$ 568,864,000	\$ 27,828,000	\$ 1,246,292,000
Pinal	\$ 359,600,000	\$ 182,122,000	\$ 11,476,000	\$ 553,198,000
Santa Cruz	\$ 17,400,000	\$ 19,046,000	\$ 1,640,000	\$ 38,086,000
Yavapai	\$ 232,000,000	\$ 166,916,000	\$ 9,888,000	\$ 408,804,000
Yuma	\$ 104,400,000	\$ 97,086,000	\$ 6,772,000	\$ 208,258,000
TOTALS	\$ 5,521,600,000	\$ 4,835,584,000	\$ 350,060,000	\$ 10,707,244,000

Table 1 – 5

Average Economic Cost per Incident

1.	Fatality	\$5,800,000
2.	Incapacitating Injury	\$400,000
3.	Non-Incapacitating Injury	\$80,000
4.	Possible Injury	\$42,000
5.	Property Damage Only	\$4,000

Source: www.cmfclearinghouse.org/resources_servlifecrashcostguide.cfm

Section 1: – Highlights and Historical Trends

Traffic Crashes in Arizona by Year

Chart 1 – 1
Total Crashes

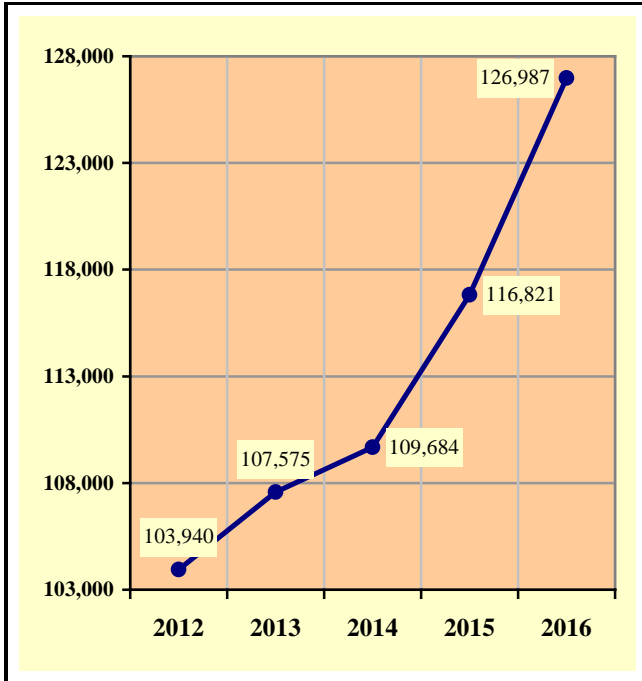


Chart 1 – 2
Fatal Crashes

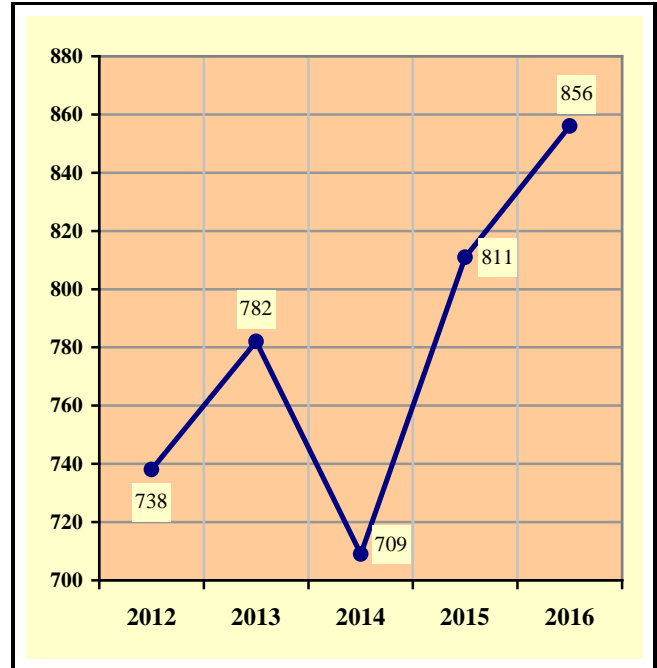


Chart 1 – 3
Injury Crashes

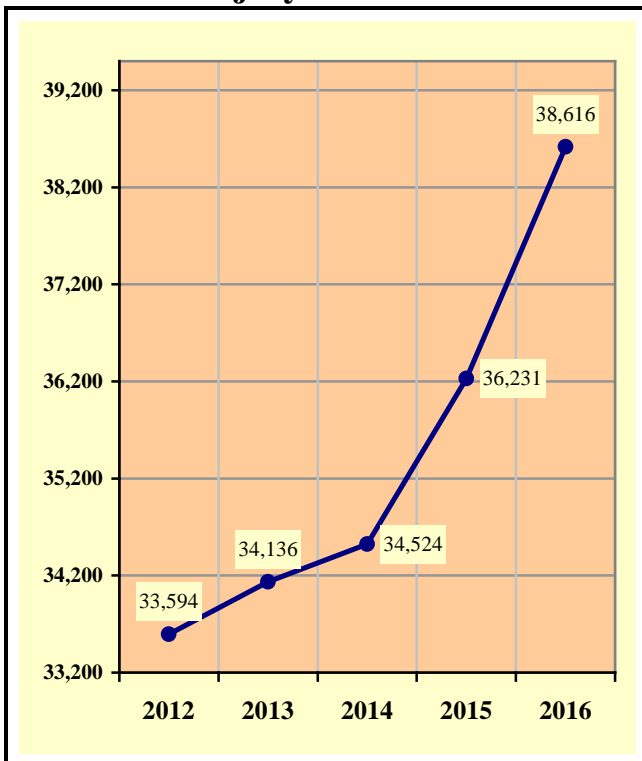
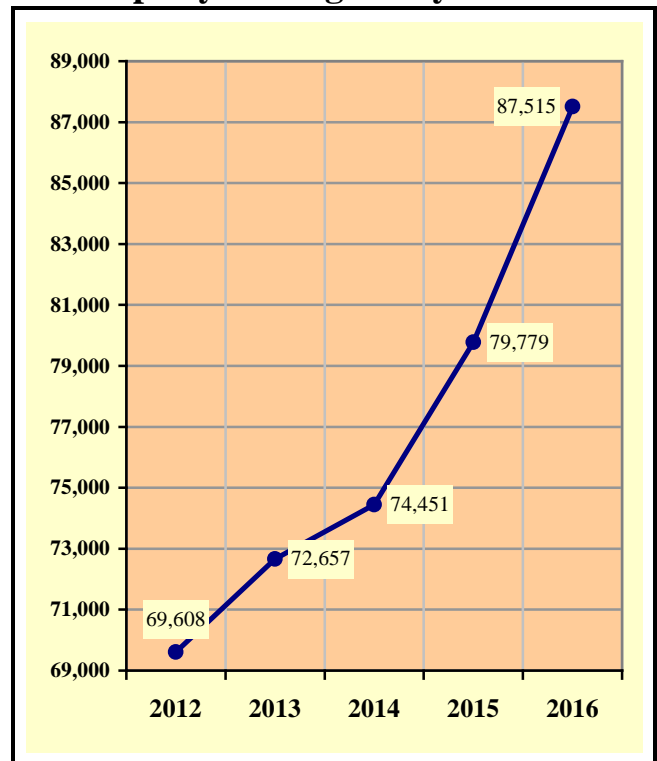


Chart 1 – 4
Property Damage Only Crashes



Section 1: – Highlights and Historical Trends

Table 1 – 6
Victims of Motor Vehicle Crashes

Age of Victim	Persons Killed				Persons Injured			
	Total	Male	Female	Gender Unknown	Total	Male	Female	Gender Unknown
0-4	14	9	5	0	906	469	437	0
5-9	7	5	2	0	1,231	610	621	0
10-14	15	8	7	0	1,460	665	795	0
15-19	59	32	27	0	5,693	2,705	2,988	0
20-24	112	82	30	0	7,596	3,700	3,896	0
25-34	143	101	42	0	11,162	5,382	5,780	0
35-44	129	94	35	0	8,210	3,854	4,356	0
45-54	160	128	32	0	7,717	3,757	3,960	0
55-64	136	102	34	0	6,220	3,000	3,220	0
65-74	86	56	30	0	3,737	1,732	2,005	0
75 & Older	89	56	33	0	2,141	970	1,171	0
Unknown	2	0	0	2	680	288	297	95
TOTAL	952	673	277	2	56,753	27,132	29,526	95

Table 1 – 7
Fatalities by Person Type 2012-2016

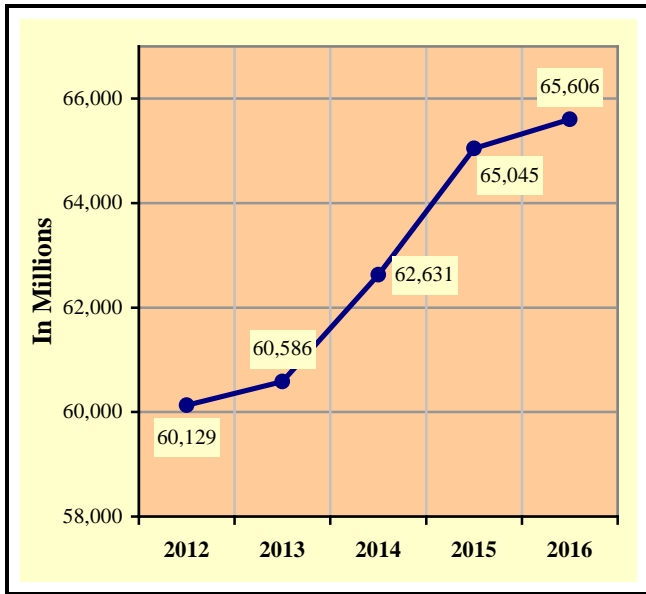
Year	Drivers	Passengers	Pedestrians	Pedalcyclists	Total
2012	475	197	131	18	821
2013	474	186	160	29	849
2014	426	164	155	29	774
2015	511	195	163	28	897
2016	506	222	193	31	952
TOTAL	2,392	964	802	135	4,293

Table 1 – 8
Young drivers (age 15-24) killed in crashes 2012-2016

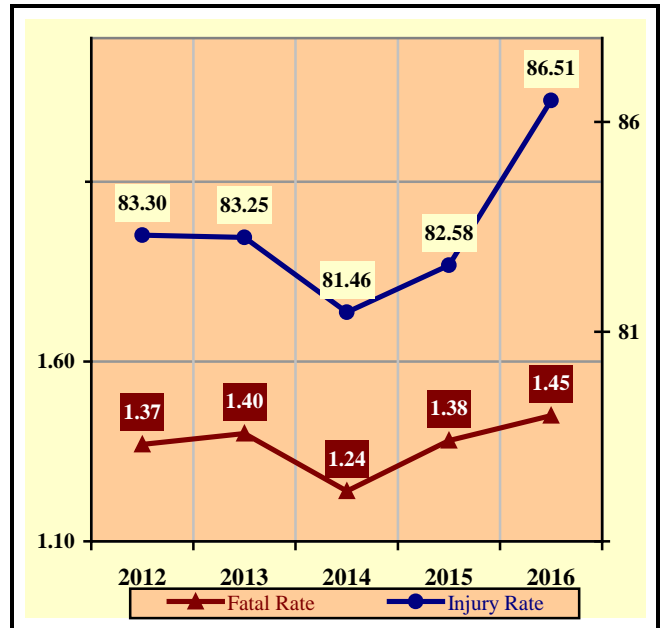
Year	Age of Driver										Total
	15	16	17	18	19	20	21	22	23	24	
2012	0	5	9	11	7	9	17	18	14	10	100
2013	2	2	7	7	12	12	17	9	13	9	90
2014	0	0	1	14	8	5	9	10	13	10	70
2015	1	2	4	7	7	13	15	15	10	10	84
2016	2	2	1	13	12	11	9	18	15	14	97
TOTAL	5	11	22	52	46	50	67	70	65	53	441

Section 1: – Highlights and Historical Trends

**Chart 1 – 5
Vehicle Miles Traveled**

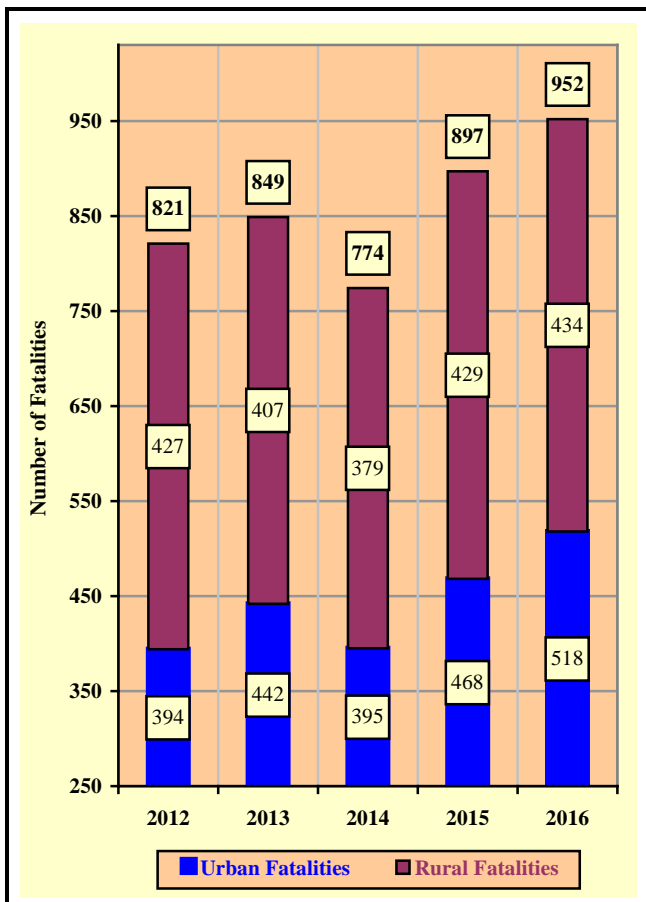


**Chart 1 – 6
Arizona Fatality Rate vs. Injury Rate**

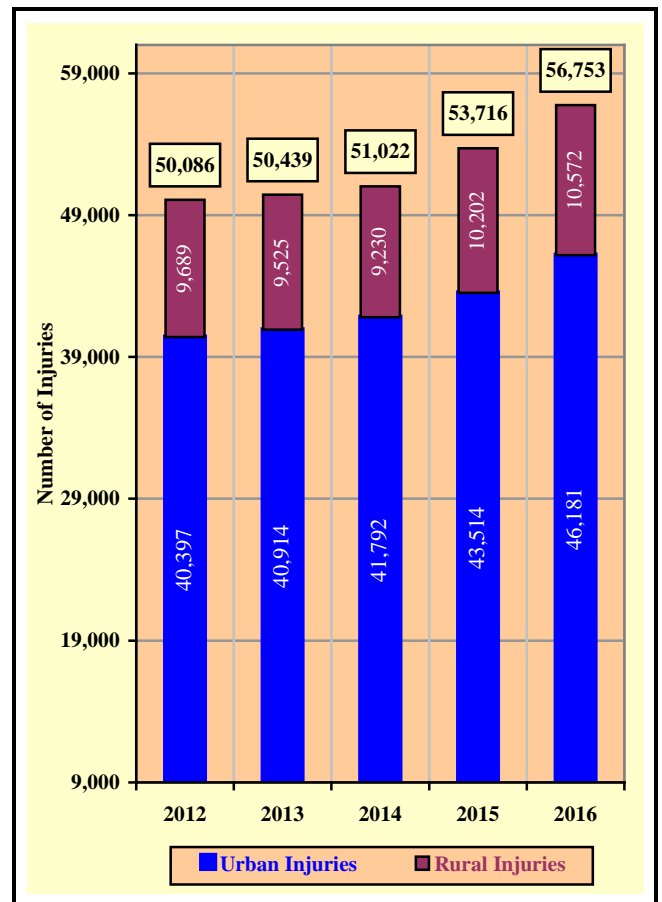


Source: ADOT – Multimodal Planning Division

**Chart 1 – 7
Traffic Fatalities by Geographic Region**



**Chart 1 – 8
Traffic Injuries by Geographic Region**



Section 1: – Highlights and Historical Trends

Table 1 – 9

Holiday Crash Statistics

Holidays such as Memorial Day, Labor Day, and Thanksgiving are regarded as three or four day weekend holidays for statistical purposes. Holidays such as Christmas, New Year’s Day, and the Fourth of July are celebrated on specific dates; which make the holiday period range from two to five days in length.

Holiday fatality statistics are based on fatal crashes occurring from 6:00 p.m. on the last working day prior to the holiday through 5:59 a.m. the day following the holiday period. Example: Thanksgiving fatalities are counted from Wednesday evening at 6:00 p.m. through 5:59 a.m. of the following Monday.

2016 Holidays	Beginning at 6:00 p.m.	Ending at 5:59 a.m.	Number of Days	Fatal Crashes	Persons Killed	Alcohol Related Fatal Crashes	Alcohol Related Fatalities
New Year’s Day	Thursday	Monday	4	6	6	3	3
	12/31/2015	1/4/2016					
Memorial Day	Friday	Tuesday	4	7	7	2	2
	5/27/2016	5/31/2016					
July 4th	Friday	Tuesday	4	13	15	7	8
	7/1/2016	7/5/2016					
Labor Day	Friday	Tuesday	4	7	8	3	4
	9/2/2016	9/6/2016					
Thanksgiving Day	Wednesday	Monday	5	11	11	5	5
	11/23/2016	11/28/2016					
Christmas Day	Friday	Tuesday	4	4	6	1	1
	12/23/2016	12/27/2016					

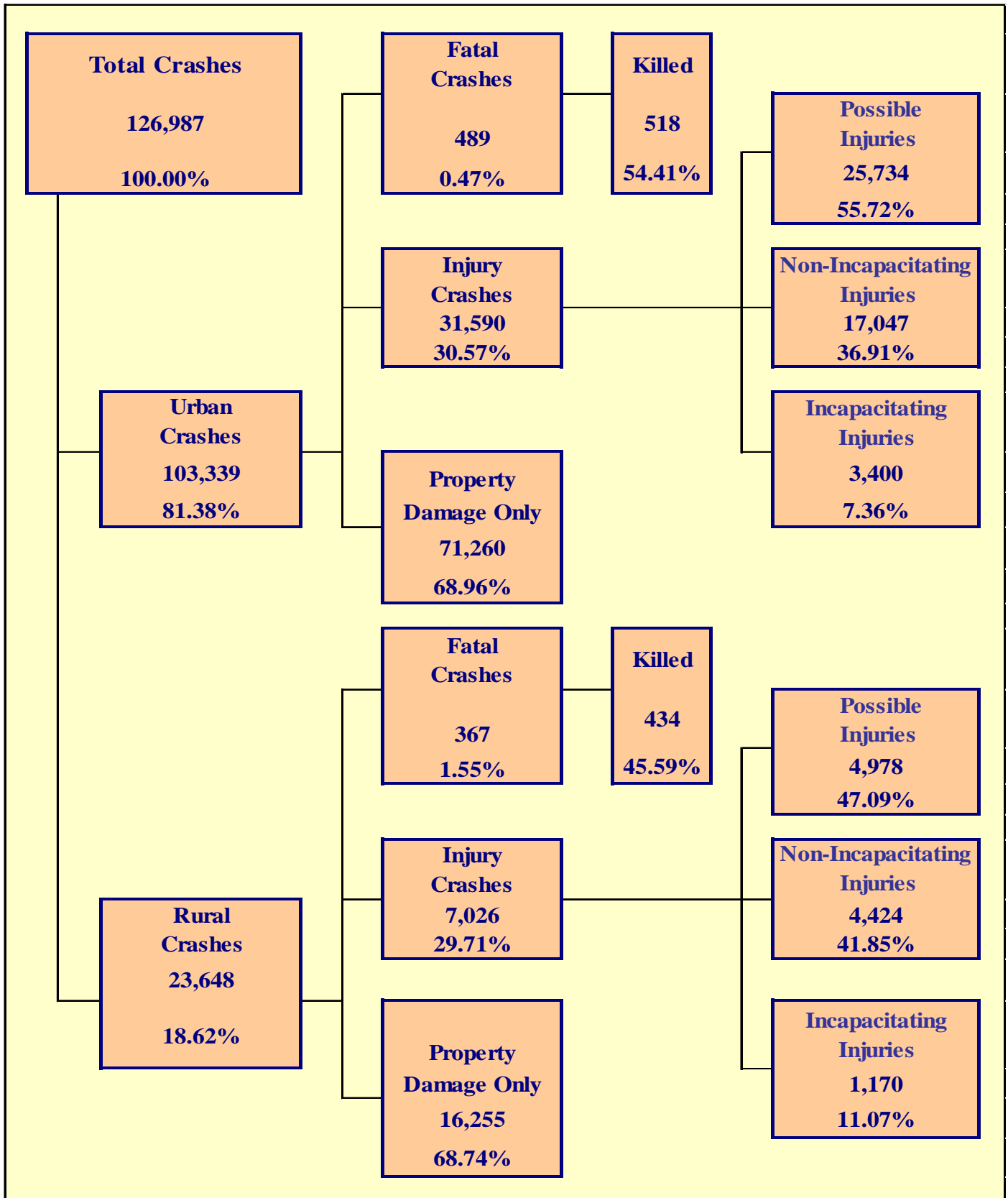
Fatal Crashes by Year	New Year’s Day	Memorial Day	July 4th	Labor Day	Thanksgiving	Christmas Day	Total
2012	14	7	5	15	11	4	56
2013	3	9	15	8	11	1	47
2014	3	7	7	4	14	7	42
2015	7	10	11	10	10	4	52
2016	6	7	13	7	11	4	48

Persons Killed	New Year’s Day	Memorial Day	July 4th	Labor Day	Thanksgiving	Christmas Day	Total
2012	14	8	6	18	11	4	61
2013	4	10	16	8	14	1	53
2014	3	8	9	6	18	8	52
2015	7	11	11	10	16	6	61
2016	6	7	15	8	11	6	53

Number of Days	New Year’s Day	Memorial Day	July 4th	Labor Day	Thanksgiving	Christmas Day	Total
2012	4	4	2	4	5	5	24
2013	5	4	5	4	5	2	25
2014	2	4	4	4	5	5	24
2015	5	4	4	4	5	4	26
2016	4	4	4	4	5	4	25

Section 2

Geographic Location



Section 2: – Geographic Location

Fatal Crashes in Arizona (856) accounted for 0.67% of all crashes, Injury Crashes (38,616) accounted for 30.41%, and Property Damage Only (PDO) Crashes (87,515) accounted for 68.92%.

**Table 2 – 1
Crash Severity by First Harmful Event Statewide**

First Harmful Event Type	Number of Crashes				Number of Persons	
	Total	Fatal	Injury	PDO	Killed	Injured
Collision with Motor Vehicle in Transport	93,259	314	27,609	65,336	372	42,799
Overturning	2,868	132	1,798	938	150	2,507
Collision with Pedestrian	1,429	185	1,207	37	185	1,299
Collision with Pedalcyclist	1,380	29	1,251	100	30	1,286
Collision with Animal	2,149	1	187	1,961	1	234
Collision with Fixed Object	13,063	159	3,828	9,076	176	4,747
Collision with Non-fixed Object*	5,242	12	526	4,704	12	624
Vehicle Fire or Explosion	336	1	6	329	1	8
Other Non-collision**	599	8	101	490	8	109
Unknown	6,662	15	2,103	4,544	17	3,140
TOTAL	126,987	856	38,616	87,515	952	56,753
*Includes Collision with Parked Vehicles, Trains, Railway Vehicles, and Work Zone Equipment						
**Includes Vehicle Immersion, Jackknife, and Cargo Loss or Shift						

**Table 2 – 2
Crashes by County**

County	Number of Crashes				Number of Persons	
	Total	Fatal	Injury	PDO	Killed	Injured
Apache	429	30	136	263	36	229
Cochise	1,399	23	393	983	26	580
Coconino	3,987	44	857	3,086	50	1,285
Gila	795	14	253	528	19	375
Graham	255	4	91	160	5	121
Greenlee	106	1	30	75	1	41
La Paz	459	15	150	294	18	243
Maricopa	92,797	453	27,513	64,831	479	40,336
Mohave	3,086	40	902	2,144	53	1,366
Navajo	1,108	25	333	750	30	529
Pima	11,646	98	4,591	6,957	112	6,645
Pinal	4,220	56	1,295	2,869	62	1,971
Santa Cruz	552	3	139	410	3	199
Yavapai	3,588	34	1,082	2,472	40	1,592
Yuma	2,560	16	851	1,693	18	1,241
TOTAL	126,987	856	38,616	87,515	952	56,753

Section 2: – Geographic Location

**Table 2 – 3
Crash Severity by First Harmful Event in Urban Areas**

First Harmful Event Type	Number of Crashes				Number of Persons	
	Total	Fatal	Injury	PDO	Killed	Injured
Collision with Motor Vehicle in Transport	79,921	196	23,587	56,138	211	36,290
Overturning	951	36	676	239	41	838
Collision with Pedestrian	1,296	148	1,114	34	148	1,199
Collision with Pedalcyclist	1,239	20	1,139	80	20	1,171
Collision with Animal	282	0	25	257	0	31
Collision with Fixed Object	8,605	76	2,501	6,028	85	3,019
Collision with Non-fixed Object*	4,104	5	412	3,687	5	464
Vehicle Fire or Explosion	103	0	0	103	0	0
Other Non-collision**	275	6	63	206	6	65
Unknown	6,563	2	2,073	4,488	2	3,104
TOTAL	103,339	489	31,590	71,260	518	46,181
*Includes Collision with Parked Vehicles, Trains, Railway Vehicles, and Work Zone Equipment						
**Includes Vehicle Immersion, Jackknife, and Cargo Loss or Shift						

**Table 2 – 4
Crash Severity by First Harmful Event in Rural Areas**

First Harmful Event Type	Number of Crashes				Number of Persons	
	Total	Fatal	Injury	PDO	Killed	Injured
Collision with Motor Vehicle in Transport	13,338	118	4,022	9,198	161	6,509
Overturning	1,917	96	1,122	699	109	1,669
Collision with Pedestrian	133	37	93	3	37	100
Collision with Pedalcyclist	141	9	112	20	10	115
Collision with Animal	1,867	1	162	1,704	1	203
Collision with Fixed Object	4,458	83	1,327	3,048	91	1,728
Collision with Non-fixed Object*	1,138	7	114	1,017	7	160
Vehicle Fire or Explosion	233	1	6	226	1	8
Other Non-collision**	324	2	38	284	2	44
Unknown	99	13	30	56	15	36
TOTAL	23,648	367	7,026	16,255	434	10,572
*Includes Collision with Parked Vehicles, Trains, Railway Vehicles, and Work Zone Equipment						
**Includes Vehicle Immersion, Jackknife, and Cargo Loss or Shift						

While Urban Crashes in Arizona (103,339) accounted for 81.38% of all crashes, they accounted for 57.13% of all Fatal Crashes (489) occurring in 2016.

While Rural Crashes in Arizona (23,648) accounted for 18.62% of all crashes, they accounted for 42.87% of all Fatal Crashes (367) occurring in 2016.

Section 2: – Geographic Location

Table 2 – 5
Analysis by Jurisdiction

COUNTIES Cities	Number of Crashes				No. of Persons		Alcohol Related		
	Total	Fatal	Injury	PDO	Killed	Injured	Crashes	Killed	Injured
Apache County	381	30	120	231	36	209	32	14	48
Eagar	18	0	6	12	0	8	2	0	1
St. Johns	14	0	4	10	0	4	2	0	1
Springerville	16	0	6	10	0	8	0	0	0
TOTAL	429	30	136	263	36	229	36	14	50

Cochise County	627	14	168	445	17	258	27	3	20
Benson	85	0	22	63	0	32	3	0	2
Bisbee	4	2	1	1	2	2	1	1	0
Douglas	140	0	30	110	0	31	4	0	0
Huachuca City	1	0	1	0	0	1	0	0	0
Sierra Vista	506	4	160	342	4	236	23	2	5
Tombstone	17	2	6	9	2	11	3	1	1
Willcox	19	1	5	13	1	9	0	0	0
TOTAL	1,399	23	393	983	26	580	61	7	28

Coconino County	1,558	34	379	1,145	39	618	64	6	60
Flagstaff	2,000	8	403	1,589	9	557	93	4	39
Fredonia	0	0	0	0	0	0	0	0	0
Williams	133	1	23	109	1	36	3	0	1
Page	113	1	23	89	1	34	17	1	7
Sedona	183	0	29	154	0	40	6	0	1
TOTAL	3,987	44	857	3,086	50	1,285	183	11	108

Gila County	550	13	177	360	17	265	29	4	29
Globe	44	1	13	30	2	24	3	0	3
Hayden	0	0	0	0	0	0	0	0	0
Miami	3	0	0	3	0	0	1	0	0
Payson	197	0	63	134	0	86	10	0	6
Winkelman	1	0	0	1	0	0	0	0	0
TOTAL	795	14	253	528	19	375	43	4	38

Graham County	126	4	46	76	5	64	10	5	12
Pima	2	0	1	1	0	1	0	0	0
Safford	70	0	23	47	0	30	5	0	6
Thatcher	57	0	21	36	0	26	2	0	3
TOTAL	255	4	91	160	5	121	17	5	21

Greenlee County	79	0	24	55	0	32	3	0	2
Clifton	25	0	5	20	0	5	0	0	0
Duncan	2	1	1	0	1	4	1	1	0
TOTAL	106	1	30	75	1	41	4	1	2

Section 2: – Geographic Location

Table 2 – 5
Analysis by Jurisdiction

COUNTIES Cities	Number of Crashes				No. of Persons		Alcohol Related		
	Total	Fatal	Injury	PDO	Killed	Injured	Crashes	Killed	Injured
La Paz County	383	12	125	246	15	203	15	1	13
Parker	30	1	9	20	1	12	0	0	0
Quartzite	46	2	16	28	2	28	1	0	1
TOTAL	459	15	150	294	18	243	16	1	14

Maricopa County	6,849	66	2,135	4,648	73	3,047	204	23	157
Avondale	1,402	4	405	993	4	583	61	2	33
Buckeye	661	6	192	463	7	288	30	1	28
Cave Creek	74	1	25	48	1	33	11	1	11
Chandler	4,611	15	1,329	3,267	16	1,946	154	5	94
El Mirage	472	2	108	362	2	153	20	1	7
Gila Bend	52	2	12	38	3	21	1	0	0
Gilbert	2,989	8	599	2,382	8	844	92	2	38
Glendale	5,548	34	1,527	3,987	35	2,428	187	10	143
Goodyear	1,047	8	281	758	8	455	55	3	52
Mesa	7,520	41	2,431	5,048	43	3,329	286	11	197
Paradise Valley	211	0	66	145	0	80	4	0	1
Peoria	2,690	13	897	1,780	13	1,301	107	5	89
Phoenix	42,900	207	12,947	29,746	217	19,395	1,362	93	877
Scottsdale	4,163	16	1,313	2,834	16	1,831	191	7	91
Surprise	1,379	6	340	1,033	8	495	51	6	29
Tempe	8,697	22	2,503	6,172	23	3,529	254	10	128
Tolleson	478	1	119	358	1	173	19	0	14
Wickenburg	135	1	22	112	1	37	8	1	6
Youngtown	53	0	18	35	0	27	2	0	2
Guadalupe	312	0	91	221	0	124	7	0	2
Litchfield Park	58	0	17	41	0	21	2	0	1
Queen Creek	344	0	90	254	0	134	7	0	5
Fountain Hills	114	0	34	80	0	47	4	0	1
Carefree	38	0	12	26	0	15	3	0	2
TOTAL	92,797	453	27,513	64,831	479	40,336	3,122	181	2,008

Mohave County	1,373	34	415	924	46	681	79	9	74
Kingman	575	0	180	395	0	245	27	0	16
Lake Havasu City	579	2	144	433	2	195	46	1	22
Bullhead City	546	4	159	383	5	236	41	3	34
Colorado City	13	0	4	9	0	9	1	0	0
TOTAL	3,086	40	902	2,144	53	1,366	194	13	146

Section 2: – Geographic Location

Table 2 – 5

Analysis by Jurisdiction

COUNTIES Cities	Number of Crashes				No. of Persons		Alcohol Related		
	Total	Fatal	Injury	PDO	Killed	Injured	Crashes	Killed	Injured
Navajo County	597	22	168	407	27	289	40	6	56
Holbrook	60	0	20	40	0	35	2	0	1
Show Low	246	2	88	156	2	122	7	0	5
Snowflake	51	0	11	40	0	20	0	0	0
Taylor	34	0	10	24	0	13	2	0	1
Winslow	24	1	7	16	1	14	4	1	6
Pinetop-Lakeside	96	0	29	67	0	36	7	0	2
TOTAL	1,108	25	333	750	30	529	62	7	71

Pima County	3,667	37	1,097	2,533	44	1,569	208	7	132
South Tucson	111	0	48	63	0	74	2	0	0
Tucson	6,410	49	3,060	3,301	54	4,465	426	18	307
Sahuarita	210	0	67	143	0	112	13	0	7
Oro Valley	457	4	150	303	4	197	12	1	3
Marana	791	8	169	614	10	228	11	4	5
TOTAL	11,646	98	4,591	6,957	112	6,645	672	30	454

Pinal County	2,291	37	729	1,525	41	1,137	125	11	95
Casa Grande	760	6	219	535	6	313	34	2	27
Coolidge	177	3	47	127	3	86	13	2	8
Eloy	114	1	35	78	3	61	3	0	4
Florence	98	0	35	63	0	58	3	0	6
Kearny	6	1	2	3	1	4	0	0	0
Mammoth	2	0	0	2	0	0	1	0	0
Superior	1	0	1	0	0	1	0	0	0
Apache Junction	487	5	157	325	5	216	27	2	14
Maricopa	284	3	70	211	3	95	11	1	9
TOTAL	4,220	56	1,295	2,869	62	1,971	217	18	163

Santa Cruz County	336	3	99	234	3	147	16	0	11
Nogales	213	0	40	173	0	52	5	0	2
Patagonia	3	0	0	3	0	0	0	0	0
TOTAL	552	3	139	410	3	199	21	0	13

Yavapai County	1,768	28	532	1,208	34	837	87	6	64
Clarkdale	14	0	3	11	0	3	0	0	0
Cottonwood	245	0	70	175	0	99	12	0	6
Jerome	12	0	0	12	0	0	1	0	0
Prescott	729	1	220	508	1	294	30	0	25
Prescott Valley	492	3	170	319	3	245	20	0	18
Chino Valley	152	1	34	117	1	48	9	0	2
Camp Verde	147	1	44	102	1	57	10	0	9
Dewey-Humboldt	29	0	9	20	0	9	1	0	1
TOTAL	3,588	34	1,082	2,472	40	1,592	170	6	125

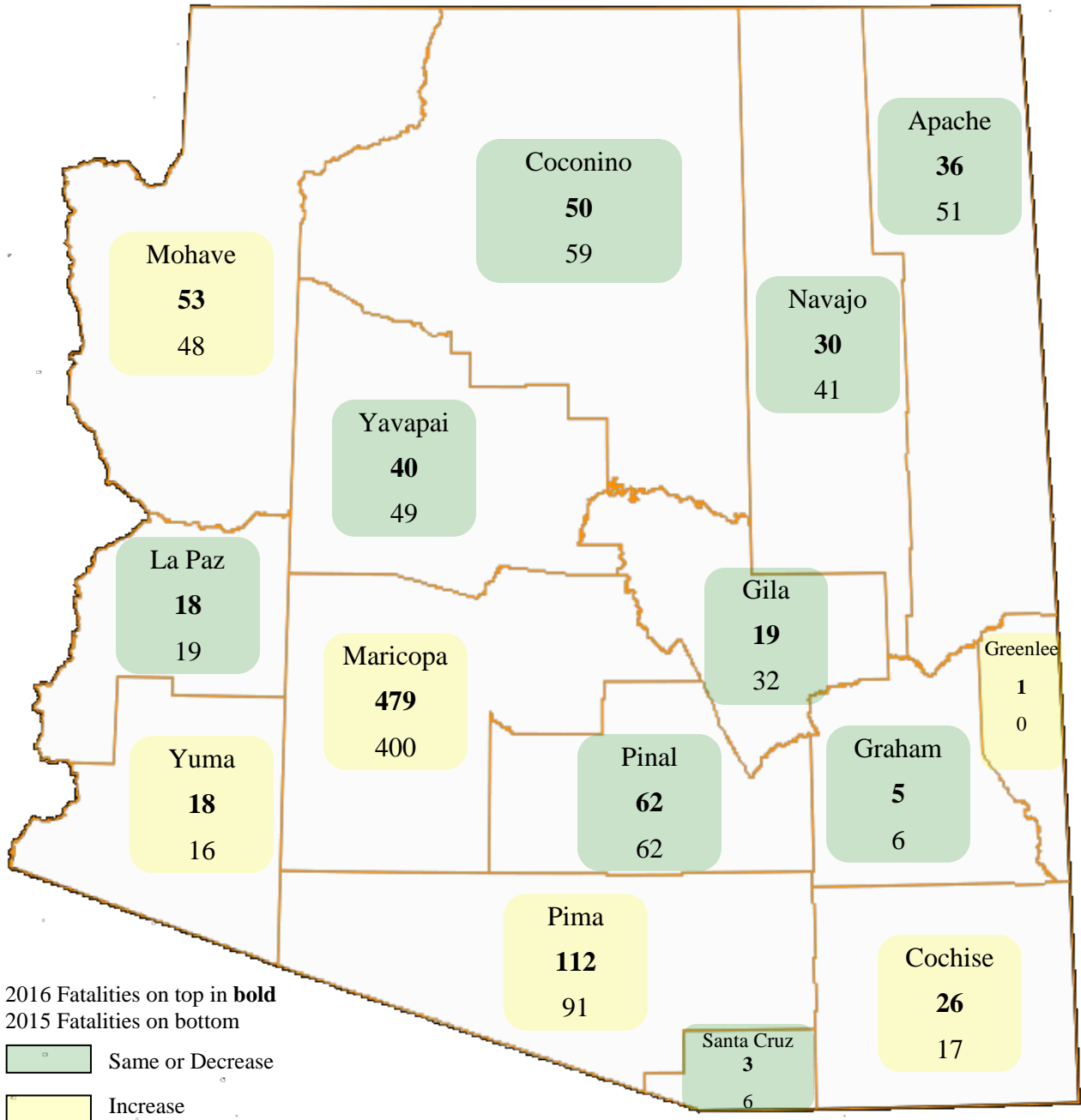
Section 2: – Geographic Location

Table 2 – 5
Analysis by Jurisdiction

COUNTIES Cities	Number of Crashes				No. of Persons		Alcohol Related		
	Total	Fatal	Injury	PDO	Killed	Injured	Crashes	Killed	Injured
Yuma County	720	9	231	480	10	370	31	3	28
Somerton	30	0	9	21	0	13	0	0	0
Yuma	1,598	7	581	1,010	8	816	90	1	54
Wellton	9	0	2	7	0	5	0	0	0
San Luis	203	0	28	175	0	37	3	0	1
TOTAL	2,560	16	851	1,693	18	1,241	124	4	83

Note: Some individual city data may be incomplete due to lack of timely reporting or changes in crash reporting procedures.

Total Fatalities by County for 2015 and 2016



Section 2: – Geographic Location

Chart 2 – 1

Urban and Rural Crashes by Day of Week

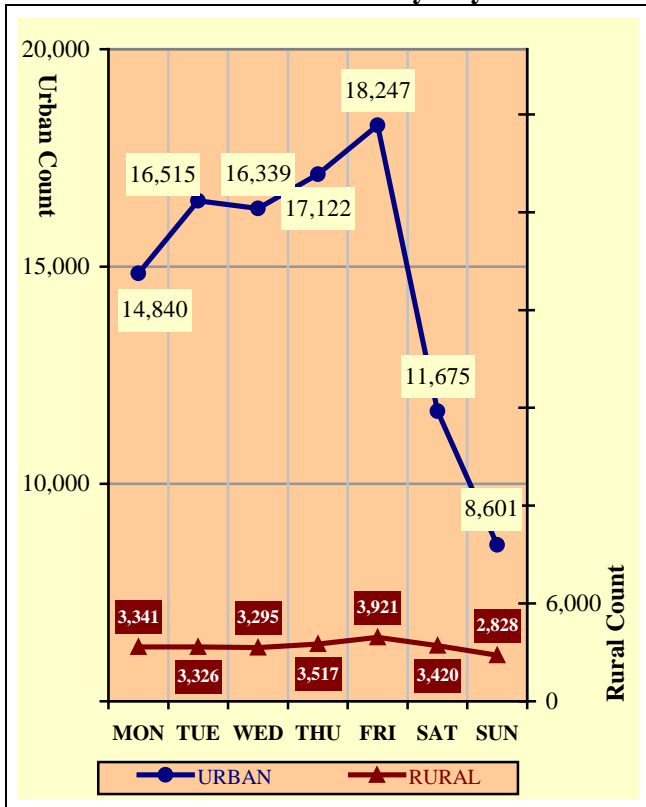


Chart 2 – 2

Urban and Rural Fatal Crashes by Day of Week

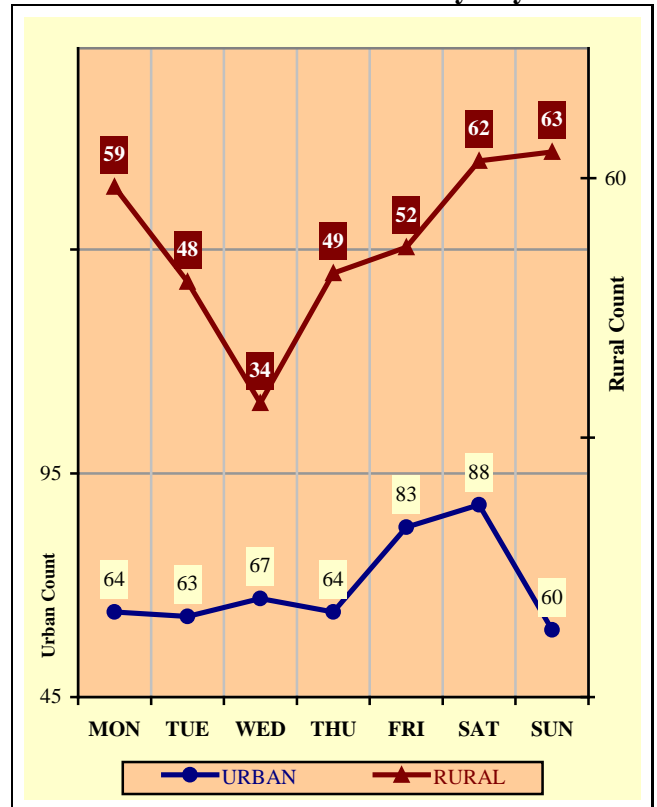
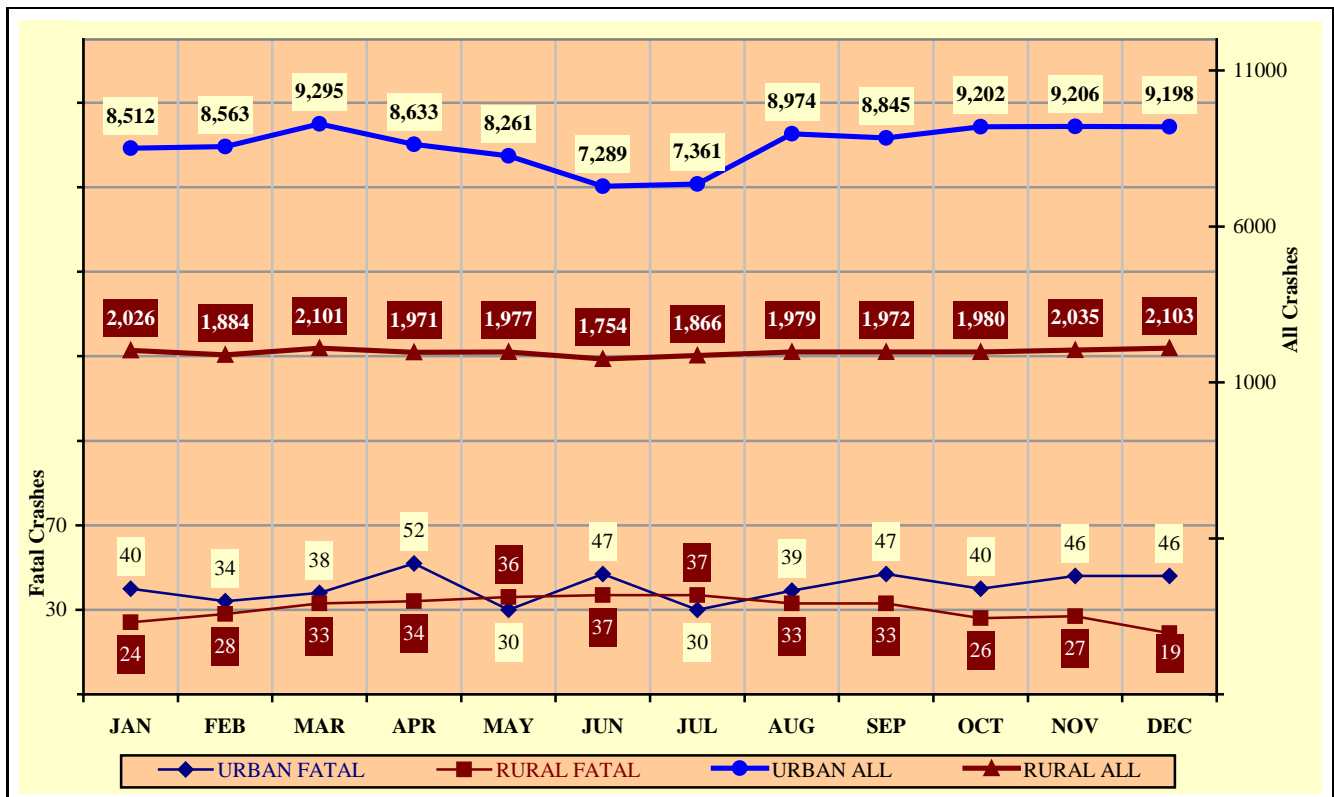


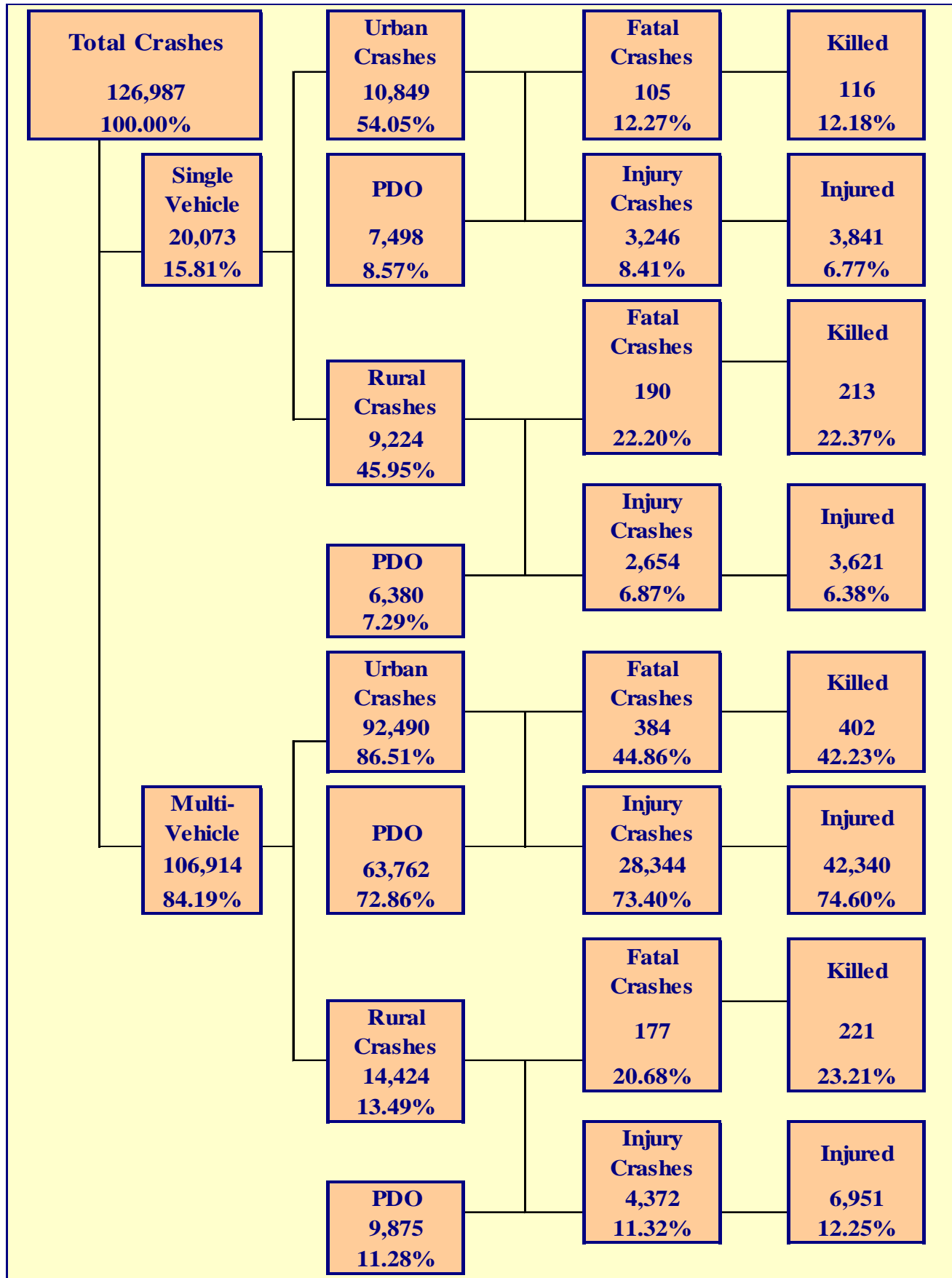
Chart 2 – 3

All Urban and Rural Crashes vs. Urban and Rural Fatal Crashes by Month



Section 3

Crash Descriptions



Section 3: – Crash Descriptions

Table 3 – 1
Manner of Collision in Multi-Vehicle Crashes

Manner of Collision Type	Number of Crashes							
	Total	Percent of Total Crashes	Fatal	Percent of Fatal Crashes	Injury	Percent of Injury Crashes	PDO	Percent of PDO Crashes
Angle	15,726	14.71%	80	14.26%	5,736	17.53%	9,910	13.46%
Left Turn	16,887	15.79%	60	10.70%	6,747	20.62%	10,080	13.69%
Rear End	48,319	45.19%	61	10.87%	14,166	43.30%	34,092	46.30%
Head-On	1,854	1.73%	67	11.94%	823	2.52%	964	1.31%
Sideswipe (same)	15,275	14.29%	26	4.63%	1,792	5.48%	13,457	18.27%
Sideswipe (opposite)	1,563	1.46%	10	1.78%	364	1.11%	1,189	1.61%
Rear to Side	791	0.74%	0	0.00%	51	0.16%	740	1.00%
Rear to Rear	657	0.61%	0	0.00%	141	0.43%	516	0.70%
Other	5,134	4.80%	250	44.56%	2,787	8.52%	2,097	2.85%
Unknown	708	0.66%	7	1.25%	109	0.33%	592	0.80%
TOTAL	106,914	100.00%	561	100.00%	32,716	100.00%	73,637	100.00%

Table 3 – 2
Lighting Conditions

Type of Lighting Conditions	Number of Crashes				Number of Persons	
	Total	Fatal	Injury	PDO	Killed	Injured
Daylight	89,847	378	27,463	62,006	428	40,305
Dawn	2,208	31	631	1,546	33	903
Dusk	3,594	22	1,127	2,445	23	1,694
Dark - Lighted	23,568	250	7,261	16,057	267	10,735
Dark - Not Lighted	7,174	134	2,039	5,001	157	2,974
Dark - Unknown Lighting	596	41	95	460	44	142
TOTAL	126,987	856	38,616	87,515	952	56,753

Table 3 – 3
Weather Conditions

Type of Weather Conditions	Number of Crashes				Number of Persons	
	Total	Fatal	Injury	PDO	Killed	Injured
Clear	110,051	694	33,670	75,687	772	49,501
Cloudy	10,956	78	3,389	7,489	84	4,986
Sleet/Hail	159	2	42	115	3	80
Rain	4,357	20	1,219	3,118	25	1,749
Snow	572	1	97	474	1	147
Severe Crosswinds	87	0	32	55	0	44
Blowing Sand, Soil, Dirt	105	1	33	71	1	51
Fog, Smog, Smoke	42	2	11	29	2	22
Blowing Snow	21	0	6	15	0	9
Other	83	0	23	60	0	34
Unknown	554	58	94	402	64	130
TOTAL	126,987	856	38,616	87,515	952	56,753

Section 3: – Crash Descriptions

Table 3 – 4
Road Surface Conditions

Type of Road Surface Condition	Number of Drivers				Number of Persons	
	Total	In Fatal Crashes	In Injury Crashes	In PDO Crashes	Killed	Injured
Dry	232,213	1,206	72,526	158,481	840	53,648
Wet	10,447	41	3,010	7,396	29	2,330
Snow	728	1	114	613	1	109
Slush	154	2	55	97	1	75
Ice/Frost	477	3	88	386	4	89
Water (standing or moving)	281	1	84	196	1	79
Sand	60	4	20	36	3	29
Mud, Dirt, Gravel	432	13	135	284	13	174
Oil	27	0	15	12	0	15
Other	87	8	13	66	3	19
Unknown	2,402	59	432	1,911	57	186
TOTAL	247,308	1,338	76,492	169,478	952	56,753

Table 3 – 5
Roadway Grade

Type of Roadway Grade	Number of Drivers				Number of Persons	
	Total	In Fatal Crashes	In Injury Crashes	In PDO Crashes	Killed	Injured
Level	229,576	1,090	71,228	157,258	745	52,318
Downhill	8,214	106	2,574	5,534	82	2,334
Uphill	6,602	59	1,994	4,549	45	1,622
Hillcrest	494	11	178	305	8	170
Sag/Dip/Bottom	202	6	82	114	9	94
Unknown	2,220	66	436	1,718	63	215
TOTAL	247,308	1,338	76,492	169,478	952	56,753

Table 3 – 6
Roadway Alignment

Type of Roadway Alignment	Number of Drivers				Number of Persons	
	Total	In Fatal Crashes	In Injury Crashes	In PDO Crashes	Killed	Injured
Straight	230,130	1,098	71,753	157,279	740	52,593
Curve Left	6,030	94	1,716	4,220	77	1,706
Curve Right	6,285	79	1,867	4,339	72	1,722
Unknown	4,863	67	1,156	3,640	63	732
TOTAL	247,308	1,338	76,492	169,478	952	56,753

Section 3: – Crash Descriptions

Chart 3 – 1
All Crashes vs. Fatal Crashes by Time of Day - Weekdays

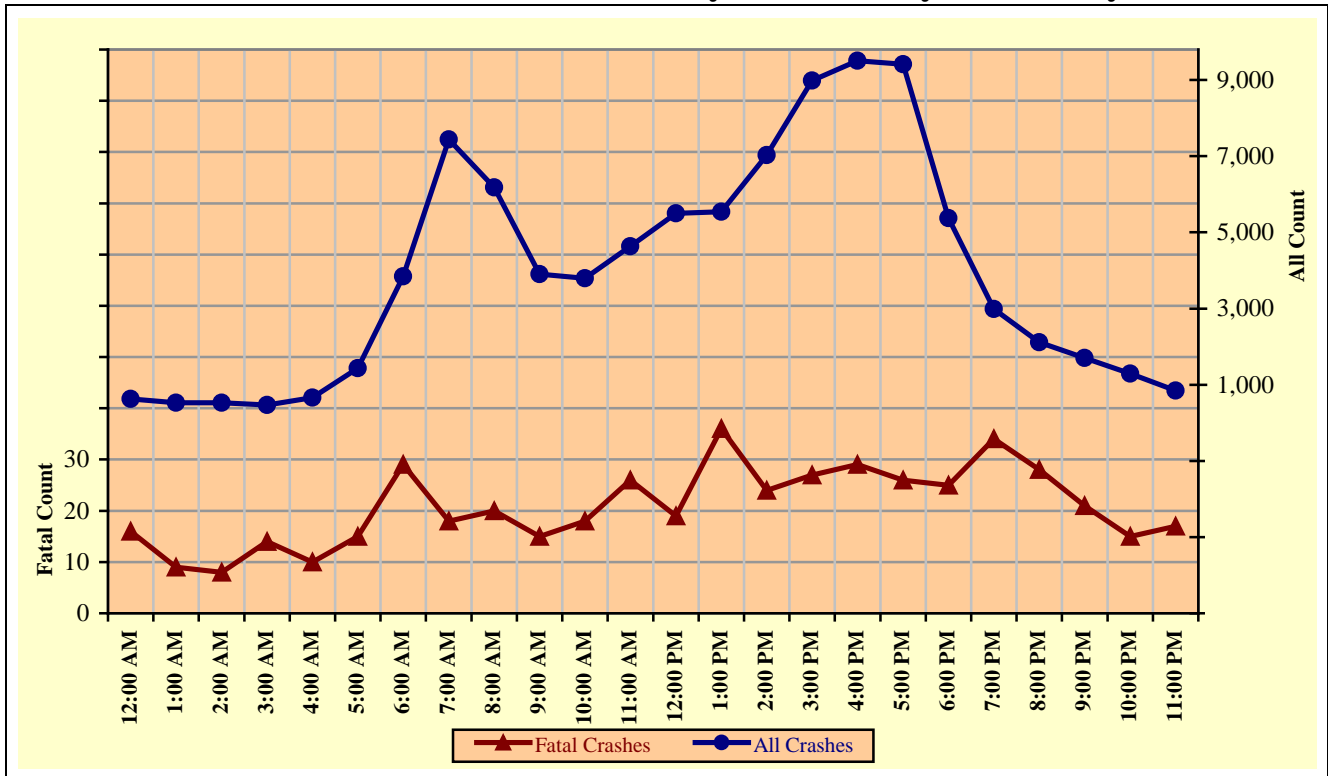
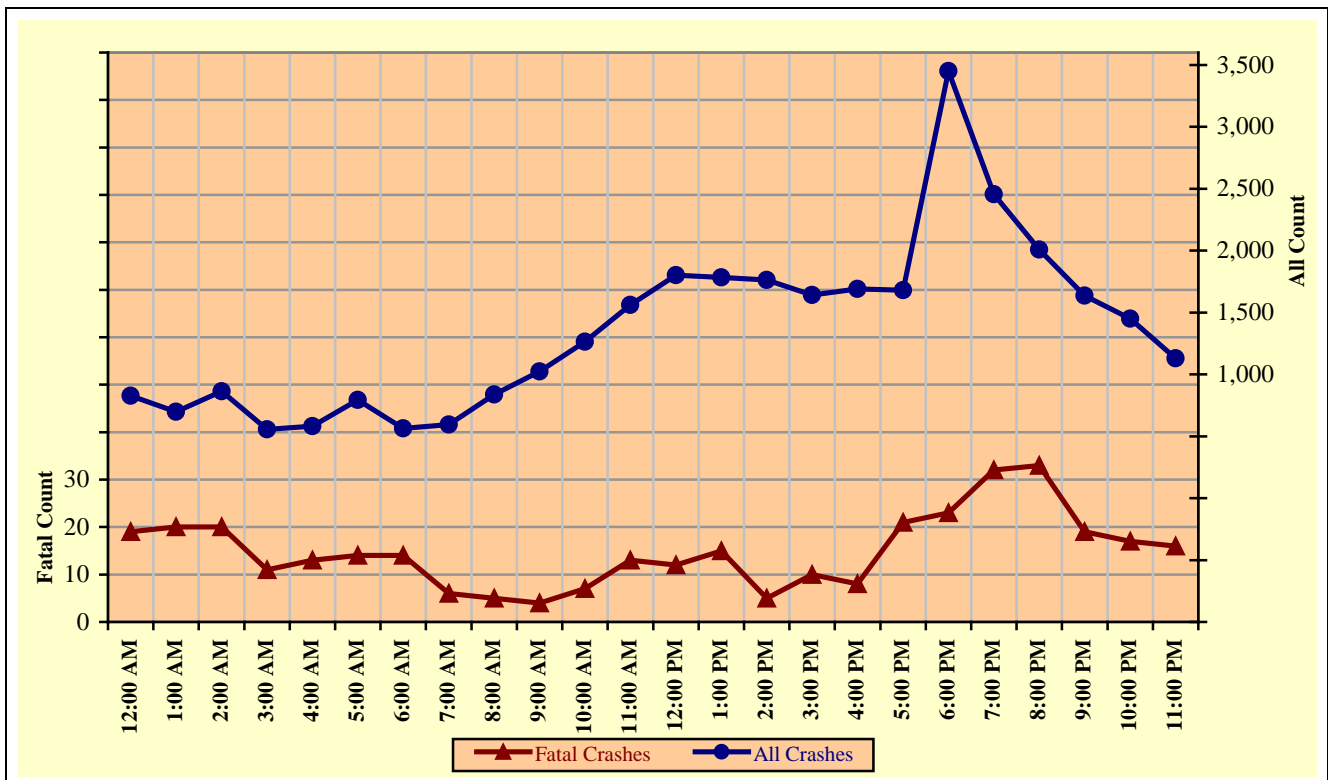


Chart 3 – 2
All Crashes vs. Fatal Crashes by Time of Day - Weekends



Section 3: – Crash Descriptions

Chart 3 – 3
Crashes by Day of Week

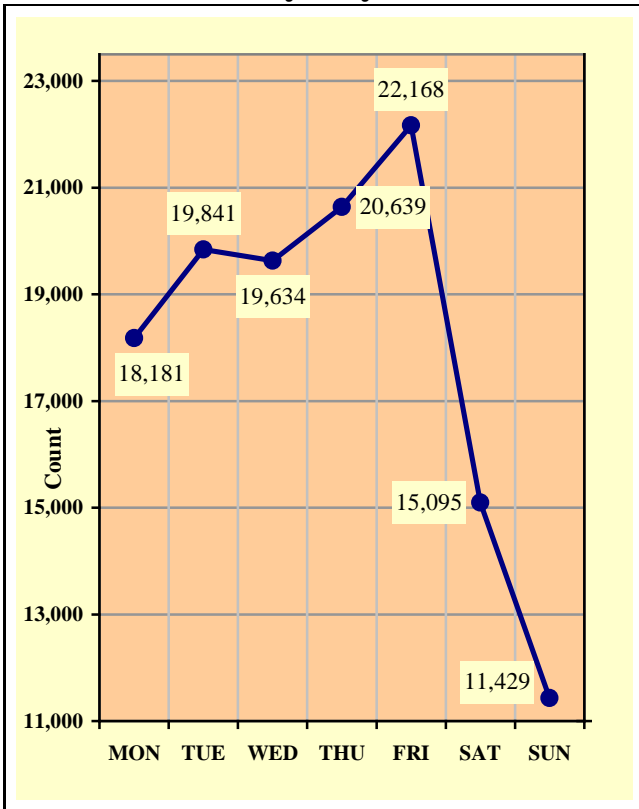


Chart 3 – 4
Fatal Crashes by Day of Week

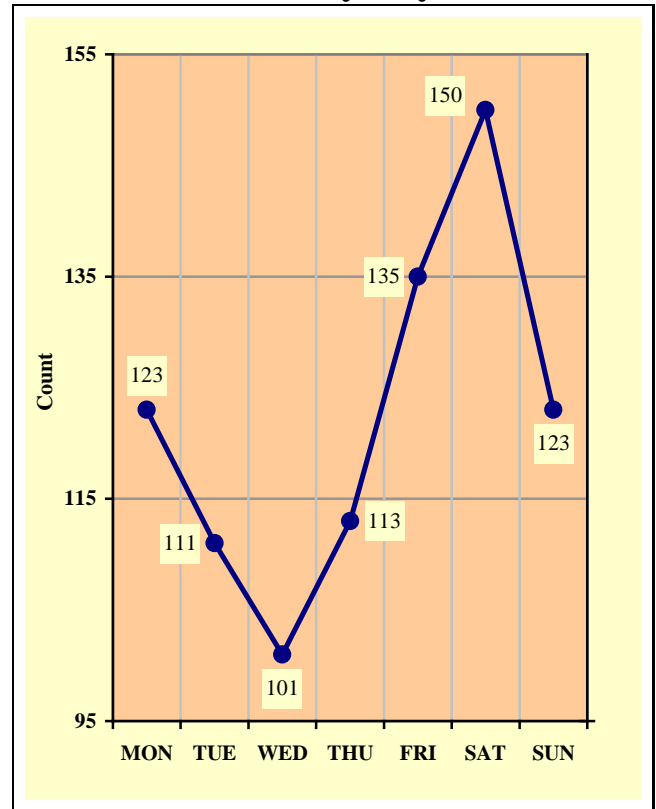
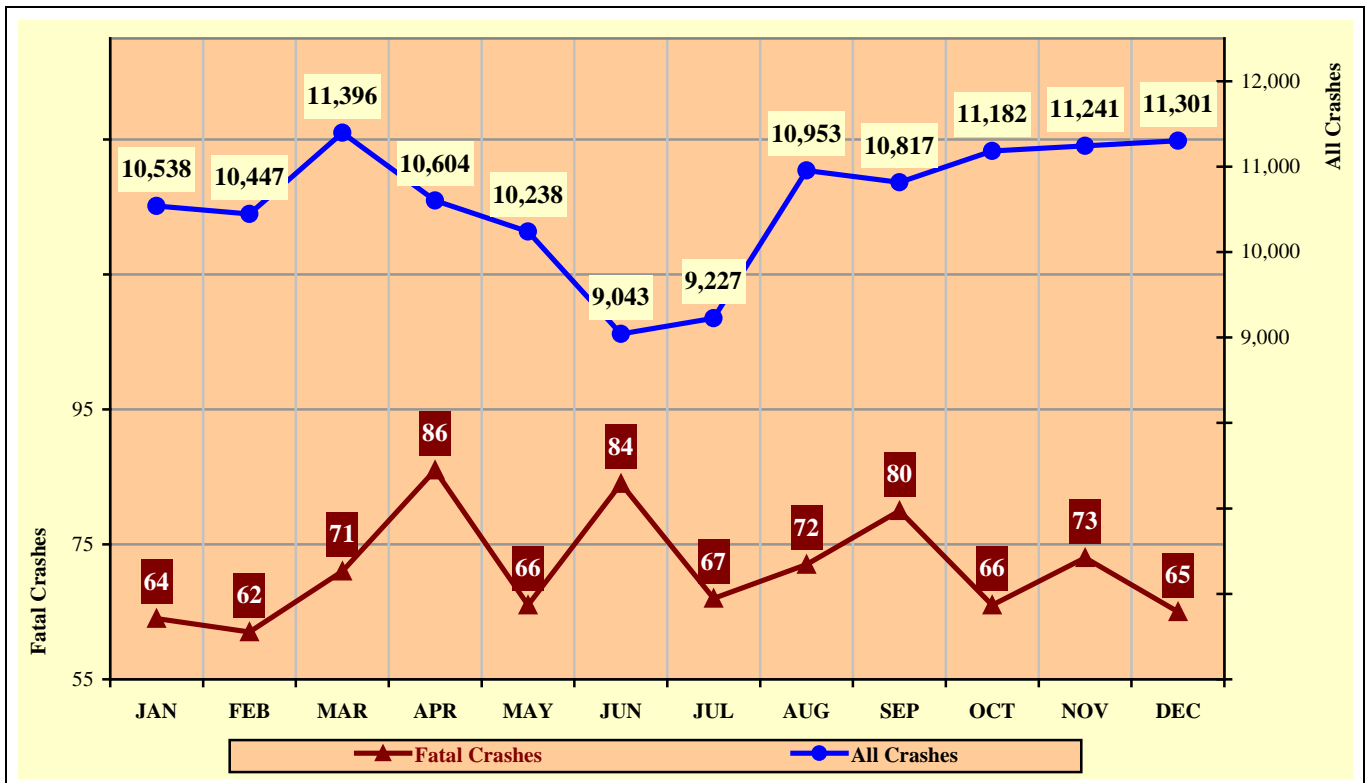


Chart 3 – 5
All Crashes vs. Fatal Crashes by Month



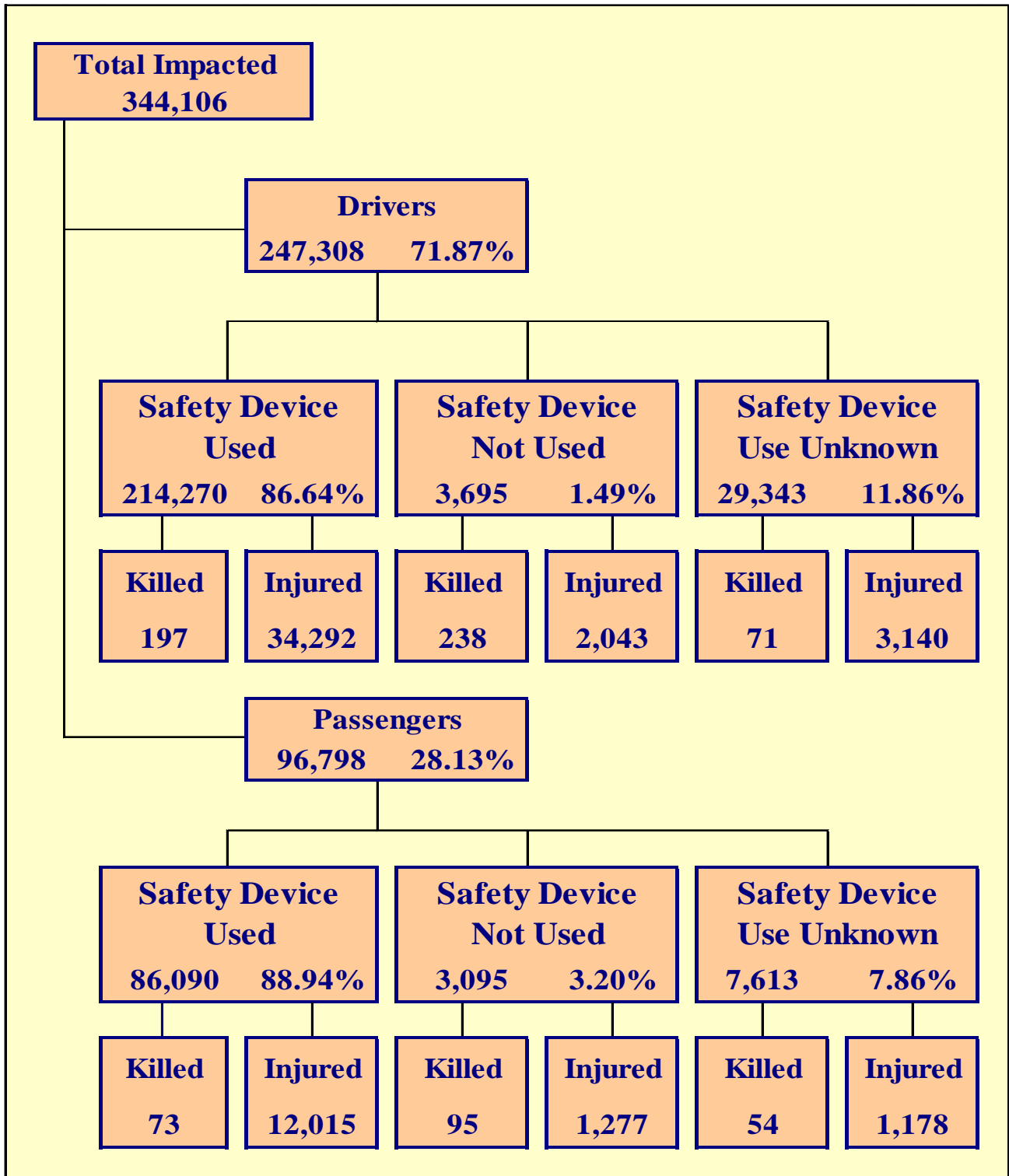
Section 3: – Crash Descriptions

**Table 3 – 7
Crashes by Hour and Day of Week**

Hour Beginning	Total Crashes		Monday		Tuesday		Wednesday		Thursday		Friday		Saturday		Sunday		Weekdays		Weekends	
	All	Fatal	All	Fatal	All	Fatal	All	Fatal	All	Fatal	All	Fatal	All	Fatal	All	Fatal	All	Fatal	All	Fatal
12:00 AM	1,452	35	154	2	132	7	133	1	185	5	176	3	341	6	331	11	626	16	826	19
1:00 AM	1,228	29	128	1	102	3	110	1	127	2	191	3	270	9	300	10	530	9	698	20
2:00 AM	1,387	28	170	6	107	1	102	1	129	3	187	3	349	10	343	4	525	8	862	20
3:00 AM	1,024	25	113	3	98	3	93	3	120	3	158	5	220	6	222	2	469	14	555	11
4:00 AM	1,243	23	157	5	143	2	162	3	170	1	187	4	228	5	196	3	662	10	581	13
5:00 AM	2,228	29	317	8	371	4	344	4	382	5	338	2	278	2	198	4	1,435	15	793	14
6:00 AM	4,408	43	731	7	849	4	811	8	797	5	657	5	298	7	265	7	3,845	29	563	14
7:00 AM	8,033	24	1,379	7	1,690	5	1,607	2	1,473	2	1,290	2	351	5	243	1	7,439	18	594	6
8:00 AM	7,016	25	1,142	4	1,365	8	1,340	5	1,247	2	1,085	1	521	5	316	0	6,179	20	837	5
9:00 AM	4,926	19	694	3	801	3	768	2	814	1	825	6	600	3	424	1	3,902	15	1,024	4
10:00 AM	5,063	25	757	6	740	3	734	3	764	4	803	2	761	3	504	4	3,798	18	1,265	7
11:00 AM	6,197	39	872	8	892	9	866	3	956	1	1,051	5	921	1	639	12	4,637	26	1,560	13
12:00 PM	7,302	31	993	4	1,035	0	1,033	4	1,079	3	1,360	8	1,085	6	717	6	5,500	19	1,802	12
1:00 PM	7,321	51	991	9	982	8	1,132	11	1,112	4	1,322	4	1,044	10	738	5	5,539	36	1,782	15
2:00 PM	8,790	29	1,392	5	1,304	5	1,360	4	1,333	5	1,638	5	1,019	3	744	2	7,027	24	1,763	5
3:00 PM	10,628	37	1,590	8	1,829	4	1,685	6	1,891	5	1,993	4	925	5	715	5	8,988	27	1,640	10
4:00 PM	11,199	37	1,716	4	1,907	6	1,863	3	1,986	10	2,037	6	938	4	752	4	9,509	29	1,690	8
5:00 PM	11,097	47	1,703	3	1,939	6	1,867	5	2,119	4	1,788	8	938	10	743	11	9,416	26	1,681	21
6:00 PM	8,819	48	1,141	1	1,360	5	1,383	9	1,486	10	1,645	12	1,028	8	776	3	5,370	25	3,449	23
7:00 PM	5,446	66	662	9	732	7	730	8	866	10	996	12	793	14	667	6	2,990	34	2,456	32
8:00 PM	4,126	61	493	8	552	5	519	6	554	9	781	12	662	12	565	9	2,118	28	2,008	33
9:00 PM	3,338	40	407	4	406	6	434	5	455	6	636	6	563	8	437	5	1,702	21	1,636	19
10:00 PM	2,744	32	283	3	306	3	341	2	364	7	591	6	524	6	335	5	1,294	15	1,450	17
11:00 PM	1,972	33	196	5	199	4	217	2	230	6	433	11	438	2	259	3	842	17	1,130	16
TOTAL	126,987	856	18,181	123	19,841	111	19,634	101	20,639	113	22,168	135	15,095	150	11,429	123	94,342	499	32,645	357

Crashes during Weekends accounted for 25.71% of all crashes and 41.71% of Fatal Crashes.

Crashes during Weekdays accounted for 74.29% of all crashes and 58.29% of Fatal Crashes.



Section 4: – Safety Devices

**Table 4 – 1
Child Safety Device Usage (less than five years old)**

Severity of Injury	Safety Device Used	Percent of Safety Device Used	Safety Device Not Used	Percent of Safety Device Not Used	Safety Device Use Unknown	Percent of Unknown
No Injury	11,677	91.07%	118	67.82%	239	72.21%
Unknown Injury	136	1.06%	2	1.15%	53	16.01%
Possible Injury	674	5.26%	16	9.20%	17	5.14%
Non-Incapacitating Injury	288	2.25%	26	14.94%	15	4.53%
Incapacitating Injury	44	0.34%	9	5.17%	2	0.60%
Fatal Injury	3	0.02%	3	1.72%	5	1.51%
TOTALS	12,822	100.00%	174	100.00%	331	100.00%

**Table 4 – 2
Driver Safety Device Usage**

Severity of Injury	Safety Device Used	Percent of Safety Device Used	Safety Device Not Used	Percent of Safety Device Not Used	Safety Device Use Unknown	Percent of Unknown
No Injury	178,542	83.33%	1,367	37.00%	14,866	50.66%
Unknown Injury	1,239	0.58%	47	1.27%	11,266	38.39%
Possible Injury	19,707	9.20%	574	15.53%	1,293	4.41%
Non-Incapacitating Injury	12,691	5.92%	979	26.50%	1,340	4.57%
Incapacitating Injury	1,894	0.88%	490	13.26%	507	1.73%
Fatal Injury	197	0.09%	238	6.44%	71	0.24%
TOTALS	214,270	100.00%	3,695	100.00%	29,343	100.00%

**Table 4 – 3
Passenger Safety Device Usage**

Severity of Injury	Safety Device Used	Percent of Safety Device Used	Safety Device Not Used	Percent of Safety Device Not Used	Safety Device Use Unknown	Percent of Unknown
No Injury	73,232	85.06%	1,693	54.70%	5,181	68.05%
Unknown Injury	770	0.89%	30	0.97%	1,200	15.76%
Possible Injury	7,348	8.54%	430	13.89%	534	7.01%
Non-Incapacitating Injury	4,042	4.70%	607	19.61%	466	6.12%
Incapacitating Injury	625	0.73%	240	7.75%	178	2.34%
Fatal Injury	73	0.08%	95	3.07%	54	0.71%
TOTALS	86,090	100.00%	3,095	100.00%	7,613	100.00%

Section 4: – Safety Devices

**Table 4 – 4
Driver Safety Device Usage by Gender**

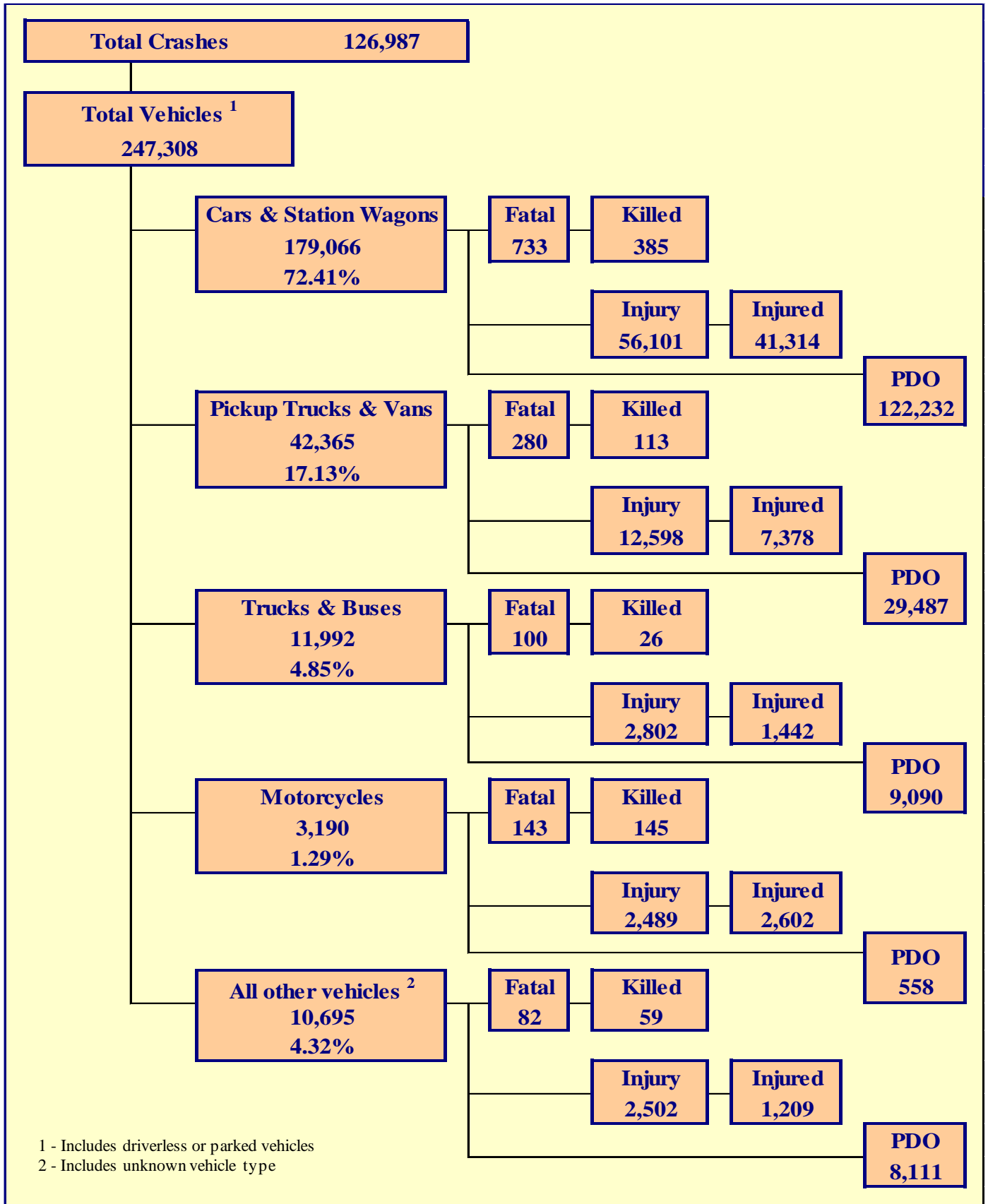
Gender of Driver	Number of Drivers							Total	Percent of Total
	Safety Device Used	Percent of Safety Device Used	Safety Device Not Used	Percent of Safety Device Not Used	Safety Device Use Unknown	Percent of Unknown			
Male	119,706	55.87%	2,656	71.88%	10,034	34.20%	132,396	53.53%	
Female	94,408	44.06%	1,015	27.47%	4,781	16.29%	100,204	40.52%	
Unknown	156	0.07%	24	0.65%	14,528	49.51%	14,708	5.95%	
TOTAL	214,270	100.00%	3,695	100.00%	29,343	100.00%	247,308	100.00%	

**Table 4 – 5
Driver Safety Device Usage by Age**

Driver Age Group	Number of Drivers							Total	Percent of Total
	Safety Device Used	Percent of Safety Device Used	Safety Device Not Used	Percent of Safety Device Not Used	Safety Device Use Unknown	Percent of Unknown			
15 & Under	238	0.11%	34	0.92%	63	0.21%	335	0.14%	
16	2,823	1.32%	40	1.08%	161	0.55%	3,024	1.22%	
17	4,368	2.04%	76	2.06%	232	0.79%	4,676	1.89%	
18	5,906	2.76%	140	3.79%	369	1.26%	6,415	2.59%	
19	6,618	3.09%	142	3.84%	422	1.44%	7,182	2.90%	
20	6,584	3.07%	141	3.82%	382	1.30%	7,107	2.87%	
21	6,425	3.00%	137	3.71%	419	1.43%	6,981	2.82%	
22	6,163	2.88%	145	3.92%	380	1.30%	6,688	2.70%	
23	6,110	2.85%	150	4.06%	403	1.37%	6,663	2.69%	
24	5,953	2.78%	120	3.25%	410	1.40%	6,483	2.62%	
25-34	48,018	22.41%	892	24.14%	3,079	10.49%	51,989	21.02%	
35-44	36,633	17.10%	509	13.78%	2,142	7.30%	39,284	15.88%	
45-54	32,234	15.04%	479	12.96%	1,825	6.22%	34,538	13.97%	
55-64	24,205	11.30%	367	9.93%	1,299	4.43%	25,871	10.46%	
65-74	13,932	6.50%	175	4.74%	716	2.44%	14,823	5.99%	
75 & Older	7,193	3.36%	85	2.30%	375	1.28%	7,653	3.09%	
Unknown	867	0.40%	63	1.71%	16,666	56.80%	17,596	7.12%	
TOTAL	214,270	100.00%	3,695	100.00%	29,343	100.00%	247,308	100.00%	

Section 5

Motor Vehicle and Driver Descriptions



Section 5: – Motor Vehicle and Driver Descriptions

Table 5 – 1
Arizona Motor Vehicle Registrations

Privately Owned Vehicles	4,944,715
Commercial Vehicles	525,385
Buses and Taxis	3,280
Motorcycles	203,498
Mopeds	330
TOTAL	5,677,208
Source: MVD - MV988 MV630419, Currently Registered Vehicles by County Listing, dated 12/31/2016.	

Table 5 – 2
Motor Vehicle Crash Involvement by Vehicle Type

Motor Vehicle Type	Number of Vehicles				
	Total	Percent of Total	In Fatal Crashes	In Injury Crashes	In PDO Crashes
Passenger Cars (Sedans, Convertibles, etc.)	129,362	52.308%	444	40,375	88,543
Station Wagons	49,704	20.098%	289	15,726	33,689
Pickup Trucks	38,149	15.426%	258	11,200	26,691
Vans	4,216	1.705%	22	1,398	2,796
Truck Tractor (with or without Semi-Trailer)	2,520	1.019%	52	619	1,849
Concrete Mixer Trucks	58	0.023%	2	11	45
Dump Trucks	204	0.082%	1	42	161
Garbage Trucks	132	0.053%	1	30	101
Tanker Trucks	40	0.016%	0	8	32
Wrecker or Tow Trucks	132	0.053%	5	42	85
Other Truck Combinations	7,788	3.149%	30	1,805	5,953
School Bus	228	0.092%	2	50	176
Commercial or Non-Commercial Bus	890	0.360%	7	195	688
Motorcycle (two or three wheel)	3,190	1.290%	143	2,489	558
All Terrain Vehicle or Cycle	170	0.069%	20	99	51
Moped	36	0.015%	1	32	3
Recreational Vehicle	200	0.081%	3	47	150
Motor Home or House Car	116	0.047%	0	28	88
Fire Trucks	51	0.021%	0	9	42
Ambulances	50	0.020%	0	16	34
Other Types Of Vehicles	198	0.080%	8	93	97
Vehicle Type Unknown	9,874	3.993%	50	2,178	7,646
TOTAL	247,308	100.00%	1,338	76,492	169,478

Section 5: – Motor Vehicle and Driver Descriptions

Table 5 – 3
Hit and Run Drivers Involved in Crashes

Hit and Run	Number of Crashes				Number of Persons	
	Total	Fatal	Injury	PDO	Killed	Injured
Yes	14,928	52	2,888	11,988	52	3,756
No	112,059	804	35,728	75,527	900	52,997
TOTAL	126,987	856	38,616	87,515	952	56,753

Table 5 – 4
Gender of Drivers Involved in Crashes

Gender of Driver	Number of Drivers							
	Total	Percent of Total	In Fatal Crashes	Percent of Fatal	In Injury Crashes	Percent of Injury	In PDO Crashes	Percent of PDO
Male	132,396	53.53%	917	68.54%	41,128	53.77%	90,351	53.31%
Female	100,204	40.52%	343	25.64%	33,041	43.20%	66,820	39.43%
Unknown	14,708	5.95%	78	5.83%	2,323	3.04%	12,307	7.26%
TOTAL	247,308	100.00%	1,338	100.00%	76,492	100.00%	169,478	100.00%

Table 5 – 5
License Status of Drivers Involved in Crashes

License Status of Driver	Number of Drivers							
	Total	Percent of Total	In Fatal Crashes	Percent of Fatal	In Injury Crashes	Percent of Injury	In PDO Crashes	Percent of PDO
Arizona License	194,211	78.53%	1,001	74.81%	62,103	81.19%	131,107	77.36%
All Others*	53,097	21.47%	337	25.19%	14,389	18.81%	38,371	22.64%
TOTAL	247,308	100.00%	1,338	100.00%	76,492	100.00%	169,478	100.00%

*Includes drivers that have a suspended, revoked, out-of-state or country license, as well as drivers with no license or unknown license type

Table 5 – 6
Passengers Killed and Injured by Age and Gender

Age of Passenger	Passengers Killed			Passengers Injured			Gender Unknown
	Total	Male	Female	Total	Male	Female	
0-4	11	7	4	878	455	423	0
5-9	5	4	1	1,153	558	595	0
10-14	10	5	5	1,256	522	734	0
15-19	25	11	14	2,136	837	1,299	0
20-24	30	15	15	1,632	691	941	0
25-34	29	16	13	1,953	761	1,192	0
35-44	23	11	12	1,317	463	854	0
45-54	27	20	7	1,257	382	875	0
55-64	19	9	10	1,086	274	812	0
65-74	12	6	6	804	174	630	0
75 & Older	31	12	19	561	153	408	0
Unknown	0	0	0	437	160	241	36
TOTAL	222	116	106	14,470	5,430	9,004	36

Section 5: – Motor Vehicle and Driver Descriptions

Table 5 – 7

Drivers and Passengers Killed and Injured by Vehicle Type

Motor Vehicle Type	Number of Drivers		Number of Passengers	
	Killed	Injured	Killed	Injured
Passenger Cars (Sedans, Convertibles, etc.)	160	22,082	84	7,779
Station Wagons	88	7,962	53	3,491
Pickup Trucks	68	4,693	34	1,748
Vans	9	572	2	365
Truck Tractor (with or without Semi-Trailer)	11	175	2	51
Concrete Mixer Trucks	0	0	0	1
Dump Trucks	0	14	0	5
Garbage Trucks	0	2	0	1
Tanker Trucks	0	2	0	0
Wrecker or Tow Trucks	0	13	0	3
Other Truck Combinations	4	662	8	309
School Bus	0	11	0	33
Commercial or Non-Commercial Bus	0	35	1	125
Motorcycle (two or three wheel)	135	2,426	10	176
All Terrain Vehicle or Cycle	15	79	6	52
Moped	1	32	0	1
Recreational Vehicle	0	20	2	8
Motor Home or House Car	0	7	0	11
Fire Trucks	0	1	0	1
Ambulances	0	4	0	7
Other Types Of Vehicles	4	72	2	16
Vehicle Type Unknown	11	611	18	287
TOTAL	506	39,475	222	14,470

Table 5 – 8

Drivers Killed and Injured by Age and Gender

Age of Driver	Drivers Killed				Drivers Injured			
	Total	Male	Female	Gender Unknown	Total	Male	Female	Gender Unknown
0-4	0	0	0	0	0	0	0	0
5-9	1	0	1	0	1	1	0	0
10-14	2	1	1	0	18	11	7	0
15-19	30	19	11	0	3,192	1,599	1,593	0
20-24	67	59	8	0	5,674	2,815	2,859	0
25-34	85	68	17	0	8,681	4,256	4,425	0
35-44	69	58	11	0	6,534	3,160	3,374	0
45-54	90	73	17	0	6,094	3,116	2,978	0
55-64	73	62	11	0	4,806	2,494	2,312	0
65-74	43	31	12	0	2,764	1,421	1,343	0
75 & Older	45	33	12	0	1,515	769	746	0
Unknown	1	0	0	1	196	98	46	52
TOTAL	506	404	101	1	39,475	19,740	19,683	52

Section 5: – Motor Vehicle and Driver Descriptions

Table 5 – 9
Licensed Drivers in Arizona by Age

Driver Age Group	Male Number	Percent of Male	Female Number	Percent of Female	Total Number	Percent of Total	Cumulative Percent
16	10,373	0.40%	10,669	0.42%	21,042	0.41%	0.41%
17	19,233	0.75%	18,416	0.72%	37,649	0.73%	1.14%
18	27,078	1.05%	25,052	0.98%	52,130	1.02%	2.16%
19	32,873	1.28%	29,364	1.15%	62,237	1.21%	3.37%
20	35,376	1.37%	33,072	1.29%	68,448	1.33%	4.70%
21	37,836	1.47%	35,770	1.40%	73,606	1.43%	6.14%
22	39,557	1.54%	37,832	1.48%	77,389	1.51%	7.64%
23	40,974	1.59%	39,363	1.54%	80,337	1.56%	9.21%
24	43,130	1.67%	41,529	1.62%	84,659	1.65%	10.86%
25-34	463,188	17.98%	456,150	17.83%	919,338	17.90%	28.76%
35-44	468,772	18.19%	452,704	17.69%	921,476	17.94%	46.70%
45-54	474,364	18.41%	454,128	17.75%	928,492	18.08%	64.78%
55-64	435,420	16.90%	451,250	17.64%	886,670	17.27%	82.05%
65-74	283,990	11.02%	302,530	11.82%	586,520	11.42%	93.47%
75 & older	164,533	6.39%	170,736	6.67%	335,269	6.53%	100.00%
TOTALS	2,576,697	100.00%	2,558,565	100.00%	5,135,262	100.00%	100.00%

Source: MVD - MV708 MV650653-1, Point-in-Time Driver Credential Report/All Driver Licenses by Age, Gender, & Class (page 19), dated 1/3/2017.

Table 5 – 10
Driver Involvement by Age

Driver Age Group	Number of Drivers							
	Total	Percent of Total	In Fatal Crashes	Percent of Fatal	In Injury Crashes	Percent of Injury	In PDO Crashes	Percent of PDO
15 & Under	335	0.14%	8	0.60%	112	0.15%	215	0.13%
16	3,024	1.22%	7	0.52%	824	1.08%	2,193	1.29%
17	4,676	1.89%	12	0.90%	1,335	1.75%	3,329	1.96%
18	6,415	2.59%	24	1.79%	1,933	2.53%	4,458	2.63%
19	7,182	2.90%	33	2.47%	2,272	2.97%	4,877	2.88%
20	7,107	2.87%	20	1.49%	2,212	2.89%	4,875	2.88%
21	6,981	2.82%	28	2.09%	2,191	2.86%	4,762	2.81%
22	6,688	2.70%	48	3.59%	2,063	2.70%	4,577	2.70%
23	6,663	2.69%	38	2.84%	2,086	2.73%	4,539	2.68%
24	6,483	2.62%	32	2.39%	2,064	2.70%	4,387	2.59%
25-34	51,989	21.02%	242	18.09%	16,461	21.52%	35,286	20.82%
35-44	39,284	15.88%	204	15.25%	12,470	16.30%	26,610	15.70%
45-54	34,538	13.97%	196	14.65%	11,206	14.65%	23,136	13.65%
55-64	25,871	10.46%	188	14.05%	8,584	11.22%	17,099	10.09%
65-74	14,823	5.99%	99	7.40%	4,972	6.50%	9,752	5.75%
75 & Older	7,653	3.09%	75	5.61%	2,630	3.44%	4,948	2.92%
Unknown	17,596	7.12%	84	6.28%	3,077	4.02%	14,435	8.52%
TOTAL	247,308	100.00%	1,338	100.00%	76,492	100.00%	169,478	100.00%

Section 5: – Motor Vehicle and Driver Descriptions

Table 5 – 11
Driver Violations

Type of Violation or Behavior	Number of Drivers							
	Total	Percent of Total	In Fatal Crashes	Percent of Fatal	In Injury Crashes	Percent of Injury	In PDO Crashes	Percent of PDO
No Improper Action	122,675	49.60%	575	42.97%	38,637	50.51%	83,463	49.25%
Speed too Fast for Conditions	45,452	18.38%	176	13.15%	14,388	18.81%	30,888	18.23%
Exceeded Lawful Speed	1,138	0.46%	50	3.74%	490	0.64%	598	0.35%
Failed to Yield Right-Of-Way	21,037	8.51%	86	6.43%	7,989	10.44%	12,962	7.65%
Followed Too Closely	7,271	2.94%	3	0.22%	1,840	2.41%	5,428	3.20%
Ran Stop Sign	1,150	0.47%	16	1.20%	511	0.67%	623	0.37%
Disregarded Traffic Signal	5,567	2.25%	37	2.77%	2,638	3.45%	2,892	1.71%
Made Improper Turn	4,986	2.02%	6	0.45%	1,237	1.62%	3,743	2.21%
Drove in Opposing Lane	1,368	0.55%	65	4.86%	553	0.72%	750	0.44%
Knowingly Operated with Faulty or Missing Equipment	189	0.08%	3	0.22%	63	0.08%	123	0.07%
Required Motorcycle Safety Equipment Not Used	16	0.01%	5	0.37%	7	0.01%	4	0.00%
Passed in No-Passing Zone	115	0.05%	2	0.15%	34	0.04%	79	0.05%
Unsafe Lane Change	7,729	3.13%	6	0.45%	1,071	1.40%	6,652	3.92%
Failed to Keep in Proper Lane	5,195	2.10%	91	6.80%	1,305	1.71%	3,799	2.24%
Disregarded Pavement Markings	240	0.10%	2	0.15%	66	0.09%	172	0.10%
Other Unsafe Passing	670	0.27%	7	0.52%	133	0.17%	530	0.31%
Other	6,691	2.71%	35	2.62%	1,657	2.17%	4,999	2.95%
Unknown	15,819	6.40%	173	12.93%	3,873	5.06%	11,773	6.95%
TOTAL	247,308	100.00%	1,338	100.00%	76,492	100.00%	169,478	100.00%

Table 5 – 12
Driver Physical Condition

Type of Condition	Number of Drivers							
	Total	Percent of Total	In Fatal Crashes	Percent of Fatal	In Injury Crashes	Percent of Injury	In PDO Crashes	Percent of PDO
No Apparent Influence	217,331	87.88%	744	55.61%	67,539	88.30%	149,048	87.95%
Alcohol	4,736	1.92%	195	14.57%	2,008	2.63%	2,533	1.49%
Appeared to be Under the Influence of Drugs*	887	0.36%	89	6.65%	380	0.50%	418	0.25%
Medications	185	0.07%	4	0.30%	89	0.12%	92	0.05%
Illness	693	0.28%	7	0.52%	387	0.51%	299	0.18%
Physical Impairment	202	0.08%	0	0.00%	95	0.12%	107	0.06%
Fell Asleep or Fatigued	1,910	0.77%	19	1.42%	747	0.98%	1,144	0.68%
Other	1,593	0.64%	13	0.97%	410	0.54%	1,170	0.69%
Unknown	19,771	7.99%	267	19.96%	4,837	6.32%	14,667	8.65%
TOTAL	247,308	100.00%	1,338	100.00%	76,492	100.00%	169,478	100.00%
*Illegal drugs or narcotics								

Section 5: – Motor Vehicle and Driver Descriptions

Table 5 – 13

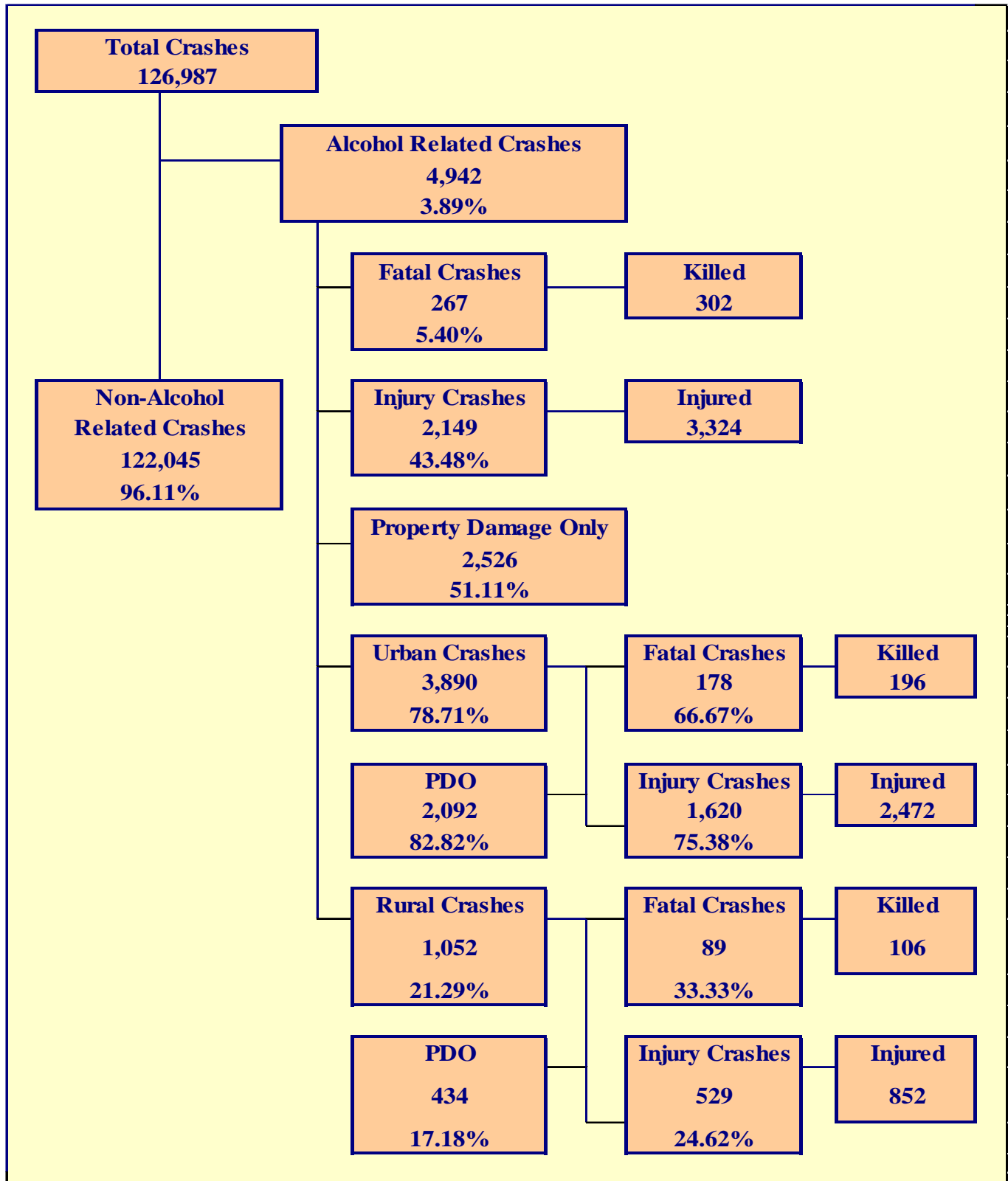
Distracted Driving Behavior

Type of Distraction	Number of Drivers							
	Total	Percent of Total	In Fatal Crashes	Percent of Fatal	In Injury Crashes	Percent of Injury	In PDO Crashes	Percent of PDO
Not Distracted	188,863	76.37%	659	49.25%	58,212	76.10%	129,992	76.70%
Talking on Hands Free Device	221	0.09%	2	0.15%	65	0.08%	154	0.09%
Talking on Hand Held Device	523	0.21%	2	0.15%	185	0.24%	336	0.20%
Passenger	994	0.40%	7	0.52%	350	0.46%	637	0.38%
Other Activity with an Electronic Device	1,342	0.54%	9	0.67%	442	0.58%	891	0.53%
Manually Operating an Electronic Device	776	0.31%	5	0.37%	275	0.36%	496	0.29%
Other Inside the Vehicle (eating, drinking, etc.)	3,170	1.28%	8	0.60%	1,066	1.39%	2,096	1.24%
Outside the Vehicle (includes unspecified distractions)	2,730	1.10%	10	0.75%	869	1.14%	1,851	1.09%
Unknown	48,689	19.69%	636	47.53%	15,028	19.65%	33,025	19.49%
TOTAL	247,308	100.00%	1,338	100.00%	76,492	100.00%	169,478	100.00%

Table 5 – 14

Secondary Crashes

Secondary Crash	Number of Crashes				Number of Persons	
	Total	Fatal	Injury	PDO	Killed	Injured
Yes	3,325	14	1,140	2,171	18	1,904
No	109,132	705	32,908	75,519	787	47,893
Unknown	14,530	137	4,568	9,825	147	6,956
TOTAL	126,987	856	38,616	87,515	952	56,753



Section 6: – Alcohol Related Crashes

The statistics in the Alcohol Related section represent those crashes where the investigating officer indicated that a driver, pedestrian, or pedalcyclist had been drinking an alcoholic beverage and may or may not be substantiated by a blood or breath test. No assumption is to be made that the person was legally intoxicated (blood alcohol content of 0.08% or higher) at the time of the crash.

Table 6 – 1
Economic Loss Due to Alcohol Related Crashes in Arizona for 2016

Fatalities	\$1,751,600,000
Incapacitating Injuries	\$260,800,000
Non-Incapacitating Injuries	\$111,760,000
Possible Injuries	\$53,550,000
Property Damage Only	\$10,104,000
TOTAL	\$2,187,814,000

Refer to note on Page 4 for Economic Loss Estimates

Table 6 – 2
Alcohol Related Crash History

Year	Alcohol Related Crashes	Percent of all Crashes	Persons Killed	Percent of all Fatalities	Persons Injured	Percent of all Injuries
2012	5,468	5.26%	283	34.47%	3,765	7.52%
2013	5,250	4.88%	282	33.22%	3,529	7.00%
2014	4,918	4.48%	275	35.53%	3,193	6.26%
2015	4,991	4.27%	329	36.68%	3,245	6.04%
2016	4,942	3.89%	302	31.72%	3,324	5.86%

Table 6 – 3
Manner of Collision in Alcohol Related Crashes

Manner of Collision Type	Number of Crashes							Percent of PDO Crashes
	Total	Percent of All Crashes	Fatal	Percent of Fatal Crashes	Injury	Percent of Injury Crashes	PDO	
Angle	440	14.73%	13	7.74%	221	16.58%	206	13.86%
Left Turn	319	10.68%	13	7.74%	171	12.83%	135	9.08%
Rear End	1,204	40.31%	14	8.33%	501	37.58%	689	46.37%
Head-On	206	6.90%	23	13.69%	114	8.55%	69	4.64%
Sideswipe (same)	276	9.24%	5	2.98%	58	4.35%	213	14.33%
Sideswipe (opposite)	107	3.58%	2	1.19%	41	3.08%	64	4.31%
Rear to Side	19	0.64%	0	0.00%	2	0.15%	17	1.14%
Rear to Rear	12	0.40%	0	0.00%	7	0.53%	5	0.34%
Other	385	12.89%	97	57.74%	212	15.90%	76	5.11%
Unknown	19	0.64%	1	0.60%	6	0.45%	12	0.81%
TOTAL	2,987	100.00%	168	100.00%	1,333	100.00%	1,486	100.00%

Note: Includes only multi-vehicle alcohol related crashes

Section 6: – Alcohol Related Crashes

Table 6 – 4
Alcohol Related Crashes by First Harmful Event

First Harmful Event Type	Number of Crashes				Number of Persons	
	Total	Fatal	Injury	PDO	Killed	Injured
Collision with Motor Vehicle in Transport	2,218	74	999	1,145	94	1,846
Overturning	231	42	159	30	47	241
Collision with Pedestrian	236	82	150	4	82	171
Collision with Pedalcyclist	40	7	32	1	7	37
Collision with Animal	5	0	3	2	0	4
Collision with Fixed Object	1,698	53	651	994	63	821
Collision with Non-fixed Object*	335	4	80	251	4	96
Vehicle Fire or Explosion	2	1	0	1	1	0
Other Non-collision**	16	2	10	4	2	13
Unknown	161	2	65	94	2	95
TOTAL	4,942	267	2,149	2,526	302	3,324
*Includes Collision with Parked Vehicles, Trains, Railway Vehicles, and Work Zone Equipment						
**Includes Vehicle Immersion, Jackknife, and Cargo Loss or Shift						

Table 6 – 5
Alcohol Related Crashes by Vehicle Type

Motor Vehicle Type	Number of Vehicles				
	Total	Percent of Total	In Fatal Crashes	In Injury Crashes	In PDO Crashes
Passenger Cars (Sedans, Convertibles, etc.)	2,608	55.068%	59	1,028	1,521
Station Wagons	800	16.892%	36	347	417
Pickup Trucks	915	19.320%	45	406	464
Vans	44	0.929%	0	18	26
Truck Tractor (with or without Semi-Trailer)	8	0.169%	2	3	3
Concrete Mixer Trucks	0	0.000%	0	0	0
Dump Trucks	0	0.000%	0	0	0
Garbage Trucks	0	0.000%	0	0	0
Tanker Trucks	0	0.000%	0	0	0
Wrecker or Tow Trucks	1	0.021%	0	0	1
Other Truck Combinations	63	1.330%	2	25	36
School Bus	0	0.000%	0	0	0
Commercial or Non-Commercial Bus	1	0.021%	0	1	0
Motorcycle (two or three wheel)	183	3.864%	43	133	7
All Terrain Vehicle or Cycle	20	0.422%	4	14	2
Moped	1	0.021%	1	0	0
Recreational Vehicle	8	0.169%	0	2	6
Motor Home or House Car	0	0.000%	0	0	0
Fire Trucks	0	0.000%	0	0	0
Ambulances	0	0.000%	0	0	0
Other Types Of Vehicles	4	0.084%	0	3	1
Vehicle Type Unknown	80	1.689%	3	28	49
TOTAL	4,736	100.00%	195	2,008	2,533

Section 6: – Alcohol Related Crashes

Table 6 – 6
Lighting Conditions in Alcohol Related Crashes

Type of Lighting Conditions	Number of Crashes				Number of Persons	
	Total	Fatal	Injury	PDO	Killed	Injured
Daylight	1,455	59	639	757	69	1,025
Dawn	83	7	32	44	8	55
Dusk	134	7	60	67	7	98
Dark - Lighted	2,493	134	1,046	1,313	149	1,581
Dark - Not Lighted	738	57	360	321	66	539
Dark - Unknown Lighting	39	3	12	24	3	26
TOTAL	4,942	267	2,149	2,526	302	3,324

Table 6 – 7
Road Surface Conditions in Alcohol Related Crashes

Type of Road Surface Condition	Number of Drivers				Number of Persons	
	Total	In Fatal Crashes	In Injury Crashes	In PDO Crashes	Killed	Injured
Dry	4,422	173	1,887	2,362	271	3,125
Wet	217	6	83	128	11	130
Snow	10	0	3	7	0	2
Slush	0	0	0	0	0	0
Ice/Frost	9	1	5	3	2	5
Water (standing or moving)	4	1	2	1	1	7
Sand	3	1	1	1	2	4
Mud, Dirt, Gravel	44	7	21	16	7	39
Oil	1	0	1	0	0	0
Other	3	1	0	2	3	6
Unknown	23	5	5	13	5	6
TOTAL	4,736	195	2,008	2,533	302	3,324

Table 6 – 8
Gender of Drivers Involved in Alcohol Related Crashes

Gender of Driver	Number of Drivers							
	Total	Percent of Total	In Fatal Crashes	Percent of Fatal	In Injury Crashes	Percent of Injury	In PDO Crashes	Percent of PDO
Male	3,458	73.02%	171	87.69%	1,509	75.15%	1,778	70.19%
Female	1,242	26.22%	24	12.31%	497	24.75%	721	28.46%
Unknown	36	0.76%	0	0.00%	2	0.10%	34	1.34%
TOTAL	4,736	100.00%	195	100.00%	2,008	100.00%	2,533	100.00%

In total crashes across the state, 53.53% of the drivers were males. When alcohol was involved, males accounted for 73.02% of the drivers.

Section 6: – Alcohol Related Crashes

**Table 6 – 9
Driver Involvement by Age in Alcohol Related Crashes**

Driver Age Group	Number of Drivers							
	Total	Percent of Total	In Fatal Crashes	Percent of Fatal	In Injury Crashes	Percent of Injury	In PDO Crashes	Percent of PDO
15 & Under	5	0.11%	1	0.51%	4	0.20%	0	0.00%
16	12	0.25%	0	0.00%	8	0.40%	4	0.16%
17	29	0.61%	0	0.00%	15	0.75%	14	0.55%
18	76	1.60%	5	2.56%	36	1.79%	35	1.38%
19	116	2.45%	4	2.05%	54	2.69%	58	2.29%
20	106	2.24%	2	1.03%	52	2.59%	52	2.05%
21	194	4.10%	5	2.56%	75	3.74%	114	4.50%
22	203	4.29%	12	6.15%	78	3.88%	113	4.46%
23	210	4.43%	6	3.08%	85	4.23%	119	4.70%
24	200	4.22%	12	6.15%	84	4.18%	104	4.11%
25-34	1,458	30.79%	59	30.26%	616	30.68%	783	30.91%
35-44	838	17.69%	37	18.97%	369	18.38%	432	17.05%
45-54	615	12.99%	28	14.36%	266	13.25%	321	12.67%
55-64	431	9.10%	16	8.21%	181	9.01%	234	9.24%
65-74	156	3.29%	8	4.10%	63	3.14%	85	3.36%
75 & Older	19	0.40%	0	0.00%	11	0.55%	8	0.32%
Unknown	68	1.44%	0	0.00%	11	0.55%	57	2.25%
TOTAL	4,736	100.00%	195	100.00%	2,008	100.00%	2,533	100.00%

**Table 6 – 10
When Alcohol Related Crashes Occurred in 2016**

Time of Day	Total	Weekday	Weekend*
Daytime**	1,413	897	516
Nighttime	3,529	1,409	2,120
Total	4,942	2,306	2,636
*Weekend begins at 6:00 p.m. on Friday and continues through 6:00 a.m. Monday. All other times and days are considered Weekdays.			
**Daytime refers to the hours between 6:00 a.m. and 6:00 p.m.			

**Table 6 – 11
Safety Device Usage for Drinking Drivers**

Severity of Injury	Safety Device Not Used	Lap Belt	Lap & Shoulder Belt	Protective Helmet	Other	Unknown	Totals
No Injury	123	35	1,919	2	2	877	2,958
Unknown Injury	7	0	35	0	0	155	197
Possible Injury	60	2	280	7	2	153	504
Non-Incapacitating Injury	133	5	313	12	0	210	673
Incapacitating Injury	101	0	79	21	0	77	278
Fatal Injury	87	0	13	9	0	17	126
TOTALS	511	42	2,639	51	4	1,489	4,736

Section 6: – Alcohol Related Crashes

Table 6 – 12
Persons Killed and Injured in Alcohol Related Crashes

Age of Victim	Persons Killed			Persons Injured			
	Total	Male	Female	Total	Male	Female	Gender Unknown
0-4	2	2	0	49	27	22	0
5-9	3	3	0	51	22	29	0
10-14	1	0	1	47	22	25	0
15-19	20	12	8	302	161	141	0
20-24	47	35	12	527	341	186	0
25-34	57	42	15	814	536	278	0
35-44	47	36	11	544	344	200	0
45-54	63	56	7	458	287	171	0
55-64	41	34	7	317	205	112	0
65-74	14	11	3	131	85	46	0
75 & Older	7	4	3	38	20	18	0
Unknown	0	0	0	46	28	15	3
TOTAL	302	235	67	3,324	2,078	1,243	3

Table 6 – 13
Alcohol Related Crashes by County

County	Number of Crashes				Number of Persons	
	Total	Fatal	Injury	PDO	Killed	Injured
Apache	36	11	16	9	14	50
Cochise	61	7	24	30	7	28
Coconino	183	10	75	98	11	108
Gila	43	3	24	16	4	38
Graham	17	4	11	2	5	21
Greenlee	4	1	1	2	1	2
La Paz	16	1	10	5	1	14
Maricopa	3,122	161	1,292	1,669	181	2,008
Mohave	194	11	94	89	13	146
Navajo	62	7	34	21	7	71
Pima	672	27	310	335	30	454
Pinal	217	16	102	99	18	163
Santa Cruz	21	0	10	11	0	13
Yavapai	170	5	87	78	6	125
Yuma	124	3	59	62	4	83
TOTAL	4,942	267	2,149	2,526	302	3,324

Section 6: – Alcohol Related Crashes

Chart 6 – 1

All Alcohol Related Crashes vs. Fatal Alcohol Related Crashes by Day of Week

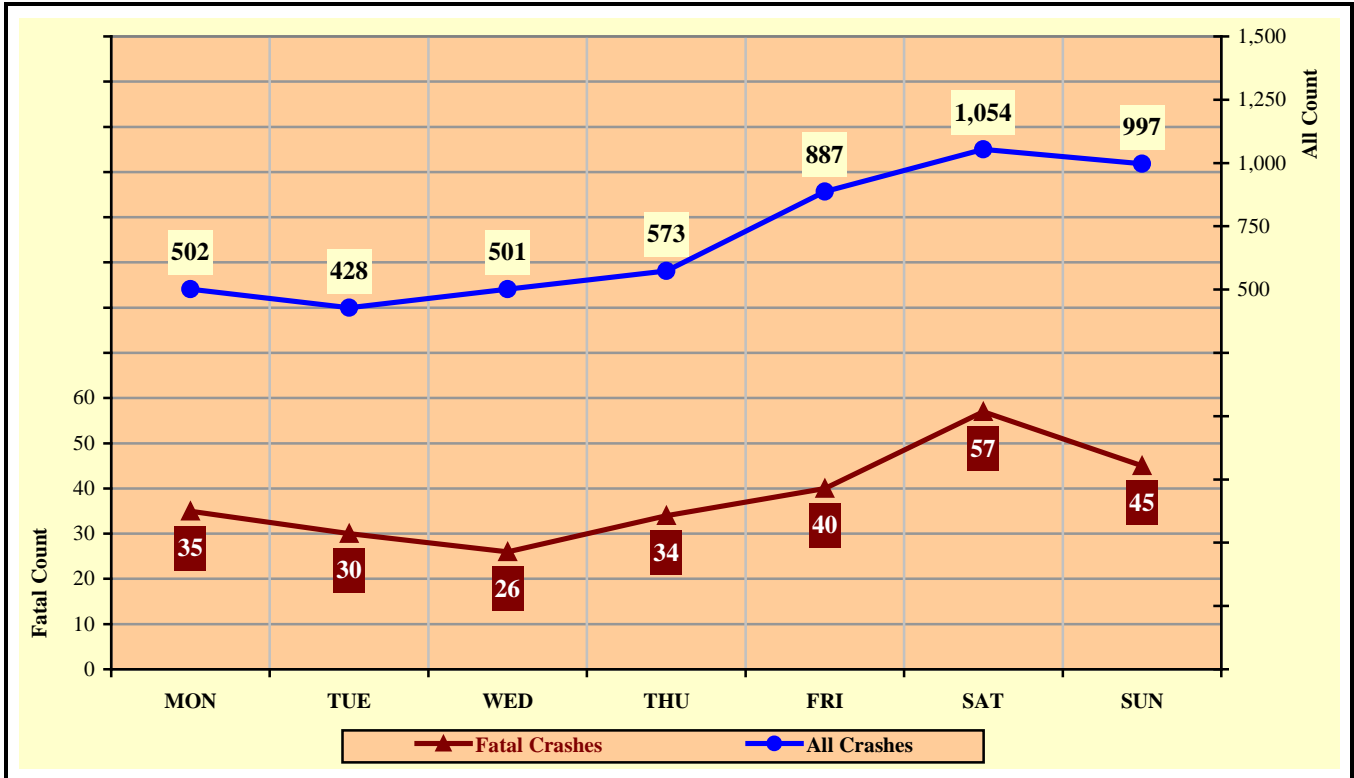
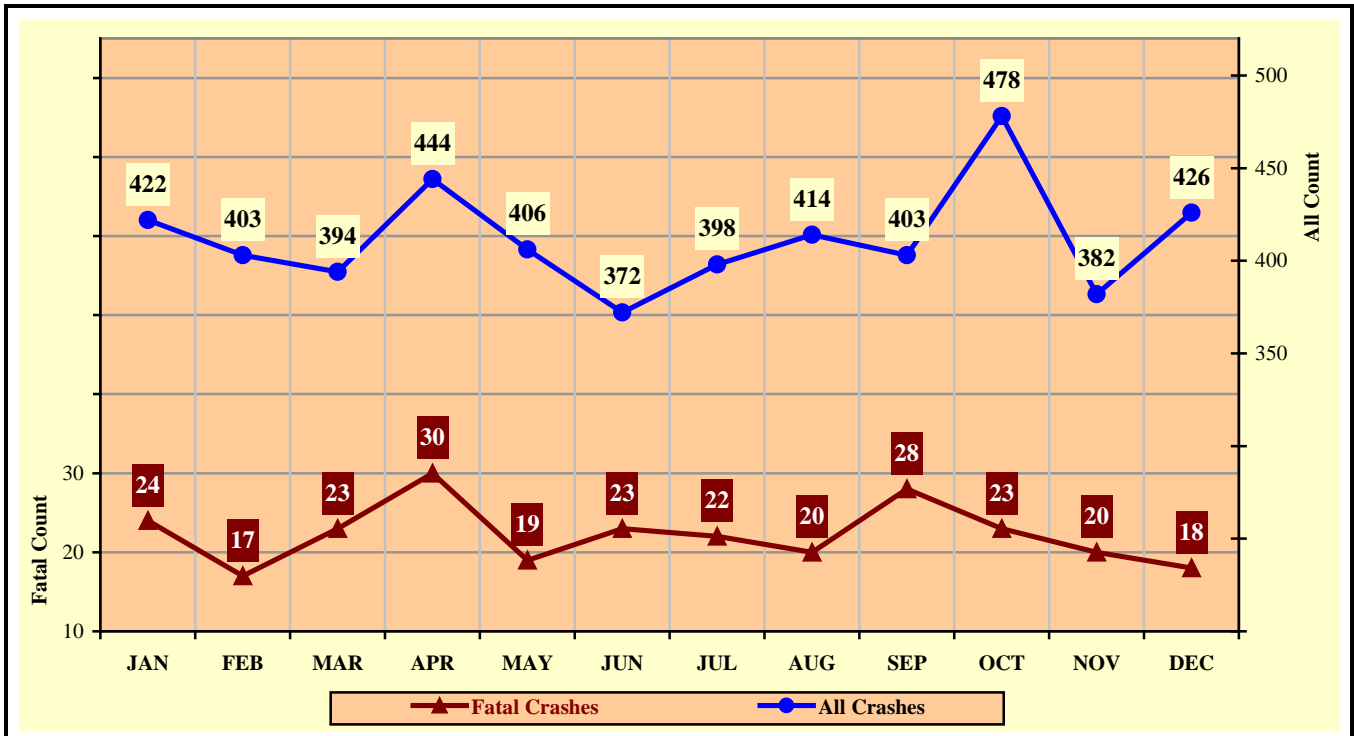


Chart 6 – 2

All Alcohol Related Crashes vs. Fatal Alcohol Related Crashes by Month



Section 6: – Alcohol Related Crashes

Chart 6 – 3

All Alcohol Related Crashes vs. Fatal Alcohol Related Crashes - Weekdays

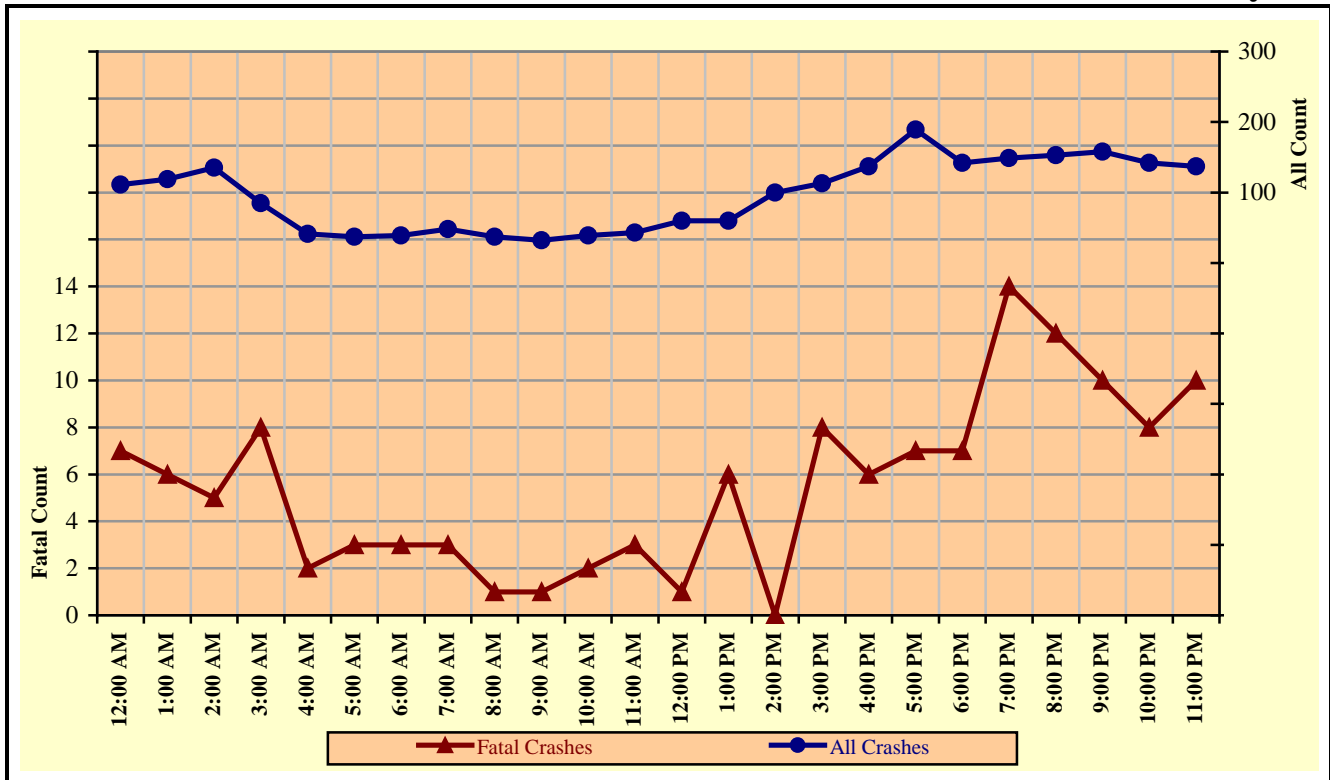
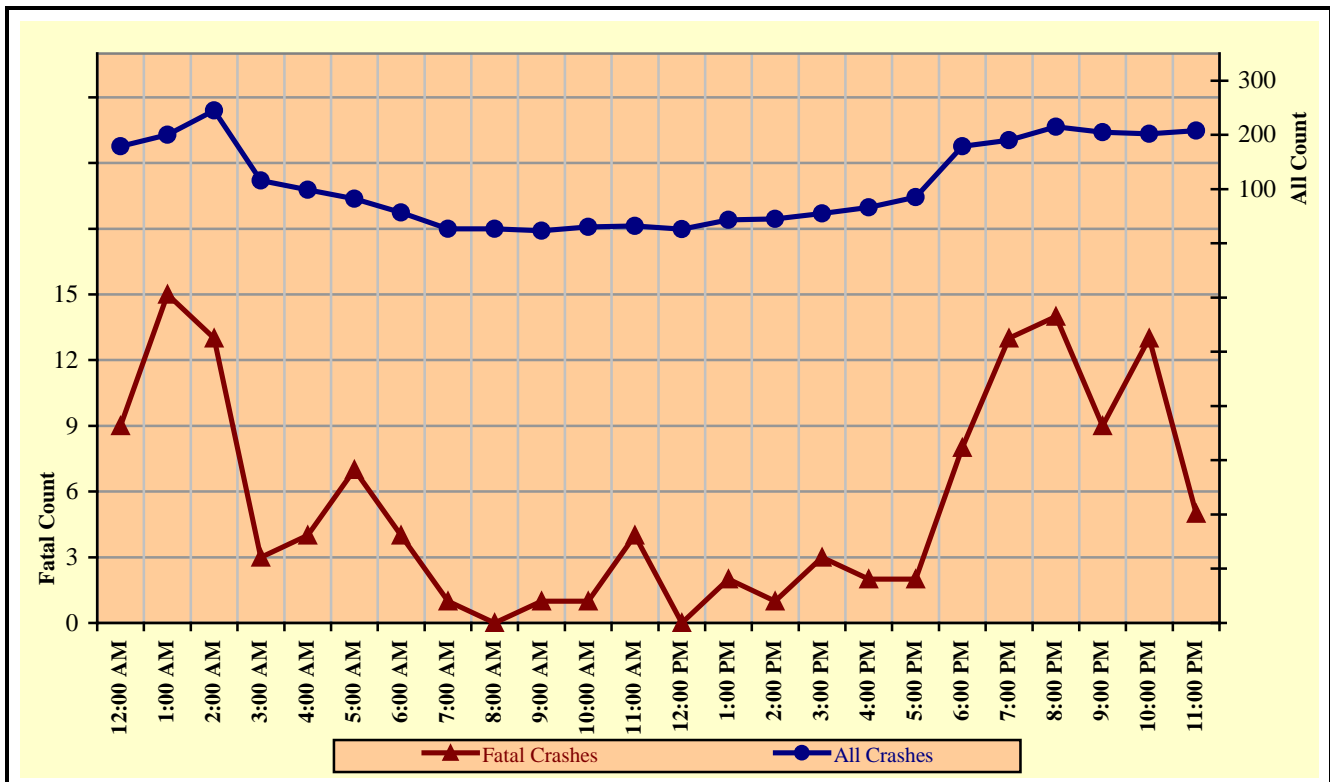


Chart 6 – 4

All Alcohol Related Crashes vs. Fatal Alcohol Related Crashes - Weekends



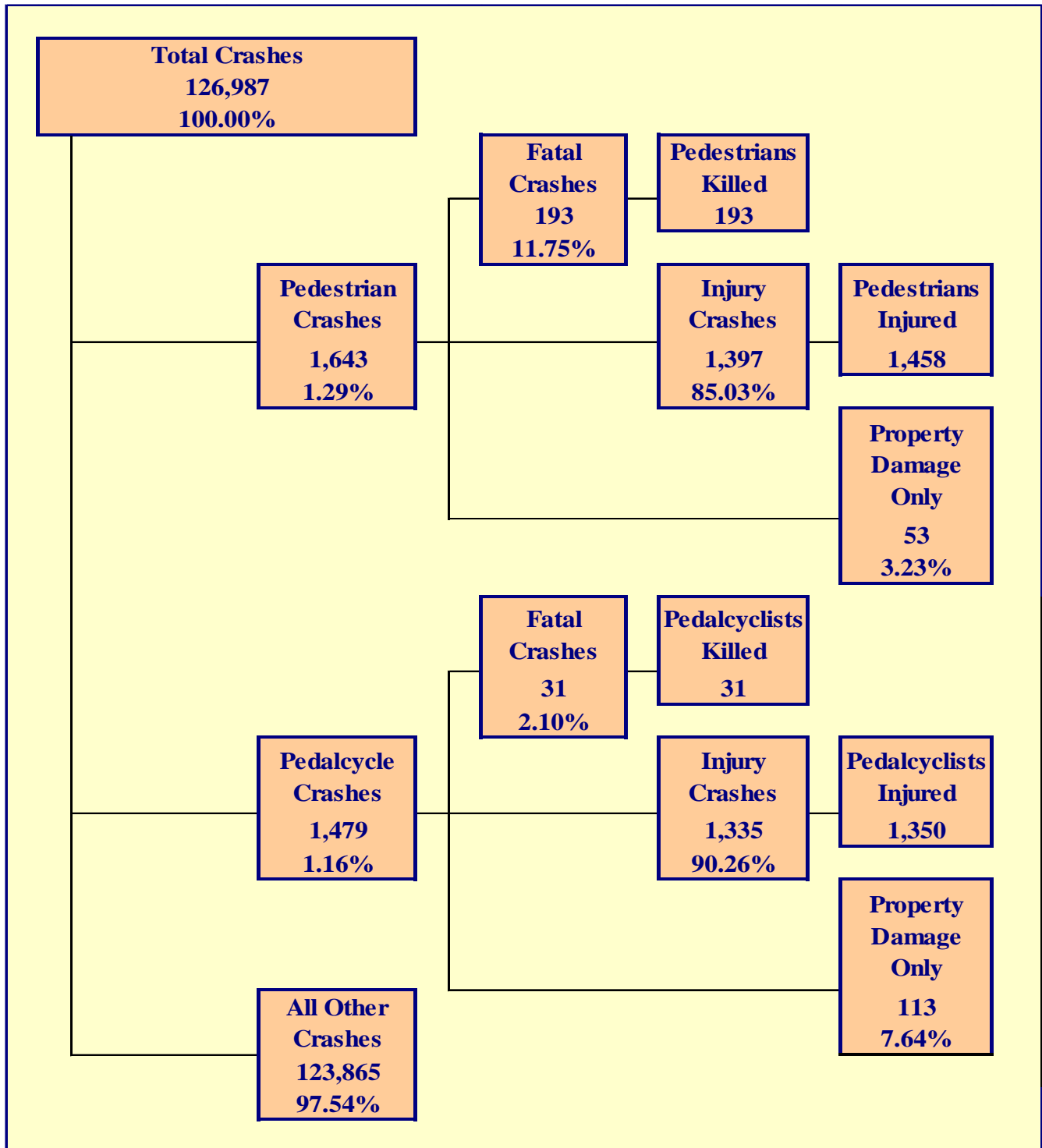
Section 6: – Alcohol Related Crashes

Table 6 – 14
Alcohol Related Crashes by Hour and Day of Week

Hour Beginning	Total Crashes		Monday		Tuesday		Wednesday		Thursday		Friday		Saturday		Sunday		Weekdays		Weekends	
	All	Fatal	All	Fatal	All	Fatal	All	Fatal	All	Fatal	All	Fatal	All	Fatal	All	Fatal	All	Fatal	All	Fatal
12:00 AM	290	16	28	0	19	4	27	0	32	2	33	1	69	4	82	5	111	7	179	9
1:00 AM	319	21	32	1	16	1	23	1	24	2	56	2	75	6	93	8	119	6	200	15
2:00 AM	380	18	40	4	21	1	20	1	35	0	59	3	101	7	104	2	135	5	245	13
3:00 AM	201	11	12	0	10	2	15	2	23	1	37	3	57	2	47	1	85	8	116	3
4:00 AM	140	6	12	1	6	1	8	0	11	0	16	1	45	2	42	1	41	2	99	4
5:00 AM	119	10	11	3	8	0	4	1	12	2	13	0	35	1	36	3	37	3	82	7
6:00 AM	96	7	6	0	9	2	7	1	4	0	13	0	29	3	28	1	39	3	57	4
7:00 AM	75	4	9	1	9	2	12	0	4	0	14	0	11	1	16	0	48	3	27	1
8:00 AM	64	1	7	0	7	0	6	1	6	0	11	0	13	0	14	0	37	1	27	0
9:00 AM	55	2	9	1	3	0	7	0	3	0	10	0	11	1	12	0	32	1	23	1
10:00 AM	69	3	4	1	10	0	10	0	7	1	8	0	16	0	14	1	39	2	30	1
11:00 AM	75	7	5	1	7	1	8	0	17	1	6	0	9	0	23	4	43	3	32	4
12:00 PM	86	1	13	0	11	0	11	0	9	0	16	1	14	0	12	0	60	1	26	0
1:00 PM	103	8	10	1	16	3	14	2	9	0	11	0	28	2	15	0	60	6	43	2
2:00 PM	145	1	17	0	20	0	19	0	18	0	26	0	24	1	21	0	100	0	45	1
3:00 PM	168	11	21	4	18	0	18	3	20	0	36	1	25	1	30	2	113	8	55	3
4:00 PM	203	8	25	1	32	2	24	0	28	2	28	1	30	1	36	1	137	6	66	2
5:00 PM	274	9	32	0	36	1	35	1	42	1	44	4	42	0	43	2	189	7	85	2
6:00 PM	321	15	33	1	26	1	34	2	49	3	61	3	62	4	56	1	142	7	179	8
7:00 PM	339	27	32	3	38	3	44	4	35	4	73	5	55	6	62	2	149	14	190	13
8:00 PM	368	26	40	4	33	2	35	2	45	4	76	4	73	6	66	4	153	12	215	14
9:00 PM	363	19	39	2	24	2	43	2	52	4	77	3	83	4	45	2	158	10	205	9
10:00 PM	344	21	36	2	28	2	37	2	41	2	74	4	74	5	54	4	142	8	202	13
11:00 PM	345	15	29	4	21	0	40	1	47	5	89	4	73	0	46	1	137	10	208	5
TOTAL	4,942	267	502	35	428	30	501	26	573	34	887	40	1,054	57	997	45	2,306	133	2,636	134

Crashes during Weekends accounted for 53.34% of all Alcohol Related crashes and 50.19% of Alcohol Related Fatal Crashes.

Crashes during Weekdays accounted for 46.66% of all Alcohol Related crashes and 49.81% of Alcohol Related Fatal Crashes.



Section 7: – Pedestrian and Pedalcyclist Crashes

Table 7 – 1
Pedestrians Killed and Injured By Age and Gender

Age Group	Pedestrians Killed				Pedestrians Injured			
	Total	Male	Female	Gender Unknown	Total	Male	Female	Gender Unknown
0-4	3	2	1	0	21	8	13	0
5-9	1	1	0	0	52	34	18	0
10-14	3	2	1	0	81	53	28	0
15-19	3	2	1	0	198	130	68	0
20-24	13	7	6	0	149	88	61	0
25-34	25	14	11	0	268	172	96	0
35-44	33	21	12	0	198	122	76	0
45-54	38	30	8	0	153	98	55	0
55-64	40	28	12	0	179	110	69	0
65-74	23	14	9	0	86	60	26	0
75 & Older	10	8	2	0	45	29	16	0
Unknown	1	0	0	1	28	20	6	2
TOTAL	193	129	63	1	1,458	924	532	2

Table 7 – 2
Pedestrian Crashes by Geographic Location

Category	Total	Urban	Percent of Total	Rural	Percent of Total
Total Crashes	1,643	1,496	91.05%	147	8.95%
Fatal Crashes	193	152	78.76%	41	21.24%
Injury Crashes	1,397	1,296	92.77%	101	7.23%
PDO Crashes	53	48	90.57%	5	9.43%
Pedestrians Killed	193	151	78.24%	42	21.76%
Pedestrians Injured	1,458	1,353	92.80%	105	7.20%

Table 7 – 3
Pedestrian Crash History

Year	Pedestrian Crashes	Percent of all Crashes	Pedestrians Killed	Percent of all Fatalities	Pedestrians Injured	Percent of all Injuries
2012	1,583	1.52%	131	15.96%	1,366	2.73%
2013	1,608	1.49%	160	18.85%	1,366	2.71%
2014	1,569	1.43%	155	20.03%	1,357	2.66%
2015	1,410	1.21%	163	18.17%	1,246	2.32%
2016	1,643	1.29%	193	20.27%	1,458	2.57%

Section 7: – Pedestrian and Pedalcyclist Crashes

Table 7 – 4
Pedestrians Killed by Age and Action

Pedestrian Action	Total	Age Group of Pedestrian											
		0-4	5-9	10-14	15-19	20-24	25-34	35-44	45-54	55-64	65-74	75 & Older	Unknown
Crossing Road	126	3	1	2	1	6	16	21	29	28	12	7	0
Walking With Traffic	11	0	0	0	0	1	2	3	0	1	4	0	0
Walking Against Traffic	9	0	0	0	1	0	2	3	1	1	1	0	0
Standing	15	0	0	0	0	3	1	3	1	4	2	1	0
Lying	2	0	0	0	0	0	1	0	0	0	1	0	0
Getting on/off Vehicle	1	0	0	0	0	0	0	0	0	0	1	0	0
Working on/pushing Veh	3	0	0	0	1	0	0	0	0	1	0	1	0
Working on Road	0	0	0	0	0	0	0	0	0	0	0	0	0
Other	10	0	0	0	0	1	0	3	2	2	1	1	0
Unknown	16	0	0	1	0	2	3	0	5	3	1	0	1
TOTAL	193	3	1	3	3	13	25	33	38	40	23	10	1

Table 7 – 5
Pedestrians Injured by Age and Action

Pedestrian Action	Total	Age Group of Pedestrian											
		0-4	5-9	10-14	15-19	20-24	25-34	35-44	45-54	55-64	65-74	75 & Older	Unknown
Crossing Road	929	14	42	59	126	87	156	117	92	128	63	31	14
Walking With Traffic	85	0	1	2	10	14	19	14	9	13	2	0	1
Walking Against Traffic	109	1	2	1	18	8	27	14	15	10	7	6	0
Standing	78	0	0	2	5	8	16	16	13	11	2	1	4
Lying	7	0	0	0	0	0	3	1	0	1	0	1	1
Getting on/off Vehicle	3	0	0	0	0	0	2	0	0	0	0	1	0
Working on/pushing Veh	15	0	0	0	3	4	4	2	0	1	1	0	0
Working on Road	10	0	0	1	1	2	2	1	1	1	0	0	1
Other	156	4	5	14	26	21	22	23	17	10	9	4	1
Unknown	66	2	2	2	9	5	17	10	6	4	2	1	6
TOTAL	1,458	21	52	81	198	149	268	198	153	179	86	45	28

Table 7 – 6
Pedestrian Physical Condition in Motor Vehicle Crashes

Type of Condition	Number of Pedestrians							
	Total	Percent of Total	In Fatal Crashes	Percent of Fatal	In Injury Crashes	Percent of Injury	In PDO Crashes	Percent of PDO
No Apparent Influence	1,085	62.54%	44	21.78%	1,002	67.93%	39	67.24%
Alcohol	223	12.85%	76	37.62%	143	9.69%	4	6.90%
Appeared to be Under the Influence of Drugs*	33	1.90%	24	11.88%	9	0.61%	0	0.00%
Medications	0	0.00%	0	0.00%	0	0.00%	0	0.00%
Illness	5	0.29%	0	0.00%	5	0.34%	0	0.00%
Physical Impairment	6	0.35%	1	0.50%	5	0.34%	0	0.00%
Fell Asleep or Fatigued	2	0.12%	0	0.00%	2	0.14%	0	0.00%
Other	10	0.58%	0	0.00%	10	0.68%	0	0.00%
Unknown	371	21.38%	57	28.22%	299	20.27%	15	25.86%
TOTAL	1,735	100.00%	202	100.00%	1,475	100.00%	58	100.00%

*Illegal drugs or narcotics

Section 7: – Pedestrian and Pedalcyclist Crashes

**Table 7 – 7
Lighting Conditions in Pedestrian Crashes**

Type of Lighting Conditions	Number of Crashes			
	Total	Fatal	Injury	PDO
Daylight	805	33	737	35
Dawn	28	4	23	1
Dusk	47	4	41	2
Dark - Lighted	586	108	467	11
Dark - Not Lighted	159	34	121	4
Dark - Unknown Lighting	18	10	8	0
TOTAL	1,643	193	1,397	53

**Table 7 – 8
Weather Conditions in Pedestrian Crashes**

Type of Weather Conditions	Number of Crashes			
	Total	Fatal	Injury	PDO
Clear	1,432	157	1,227	48
Cloudy	128	19	105	4
Sleet/Hail	1	1	0	0
Rain	57	4	52	1
Snow	1	0	1	0
Severe Crosswinds	0	0	0	0
Blowing Sand, Soil, Dirt	0	0	0	0
Fog, Smog, Smoke	0	0	0	0
Blowing Snow	0	0	0	0
Other	1	0	1	0
Unknown	23	12	11	0
TOTAL	1,643	193	1,397	53

**Table 7 – 9
Pedalcyclists Killed and Injured by Age and Gender**

Age Group	Pedalcyclists Killed			Pedalcyclists Injured			
	Total	Male	Female	Total	Male	Female	Gender Unknown
0-4	0	0	0	7	6	1	0
5-9	0	0	0	25	17	8	0
10-14	0	0	0	105	79	26	0
15-19	1	0	1	167	139	28	0
20-24	2	1	1	141	106	35	0
25-34	4	3	1	260	193	67	0
35-44	4	4	0	161	109	52	0
45-54	5	5	0	213	161	52	0
55-64	4	3	1	149	122	27	0
65-74	8	5	3	83	77	6	0
75 & Older	3	3	0	20	19	1	0
Unknown	0	0	0	19	10	4	5
TOTAL	31	24	7	1,350	1,038	307	5

Section 7: – Pedestrian and Pedalcyclist Crashes

Table 7 – 10

Pedalcycle Crashes by Geographic Location

Category	Total	Urban	Percent of Total	Rural	Percent of Total
Total Crashes	1,479	1,336	90.33%	143	9.67%
Fatal Crashes	31	21	67.74%	10	32.26%
Injury Crashes	1,335	1,222	91.54%	113	8.46%
PDO Crashes	113	93	82.30%	20	17.70%
Pedalcyclists Killed	31	20	64.52%	11	35.48%
Pedalcyclists Injured	1,350	1,235	91.48%	115	8.52%

Table 7 – 11

Pedalcycle Crash History

Year	Pedalcycle Crashes	Percent of all Crashes	Pedalcyclists Killed	Percent of all Fatalities	Pedalcyclists Injured	Percent of all Injuries
2012	2,147	2.07%	18	2.19%	1,767	3.53%
2013	2,039	1.90%	29	3.42%	1,680	3.33%
2014	1,746	1.59%	29	3.75%	1,469	2.88%
2015	1,435	1.23%	28	3.12%	1,278	2.38%
2016	1,479	1.16%	31	3.26%	1,350	2.38%

Table 7 – 12

Lighting Conditions in Pedalcyclist Crashes

Type of Lighting Conditions	Number of Crashes			
	Total	Fatal	Injury	PDO
Daylight	1,124	19	1,023	82
Dawn	21	1	20	0
Dusk	52	2	45	5
Dark - Lighted	234	8	203	23
Dark - Not Lighted	42	1	39	2
Dark - Unknown Lighting	6	0	5	1
TOTAL	1,479	31	1,335	113

Table 7 – 13

Weather Conditions in Pedalcyclist Crashes

Type of Weather Conditions	Number of Crashes			
	Total	Fatal	Injury	PDO
Clear	1,337	25	1,208	104
Cloudy	106	4	95	7
Sleet/Hail	0	0	0	0
Rain	22	0	21	1
Snow	0	0	0	0
Severe Crosswinds	0	0	0	0
Blowing Sand, Soil, Dirt	1	0	1	0
Fog, Smog, Smoke	0	0	0	0
Blowing Snow	0	0	0	0
Other	2	0	2	0
Unknown	11	2	8	1
TOTAL	1,479	31	1,335	113

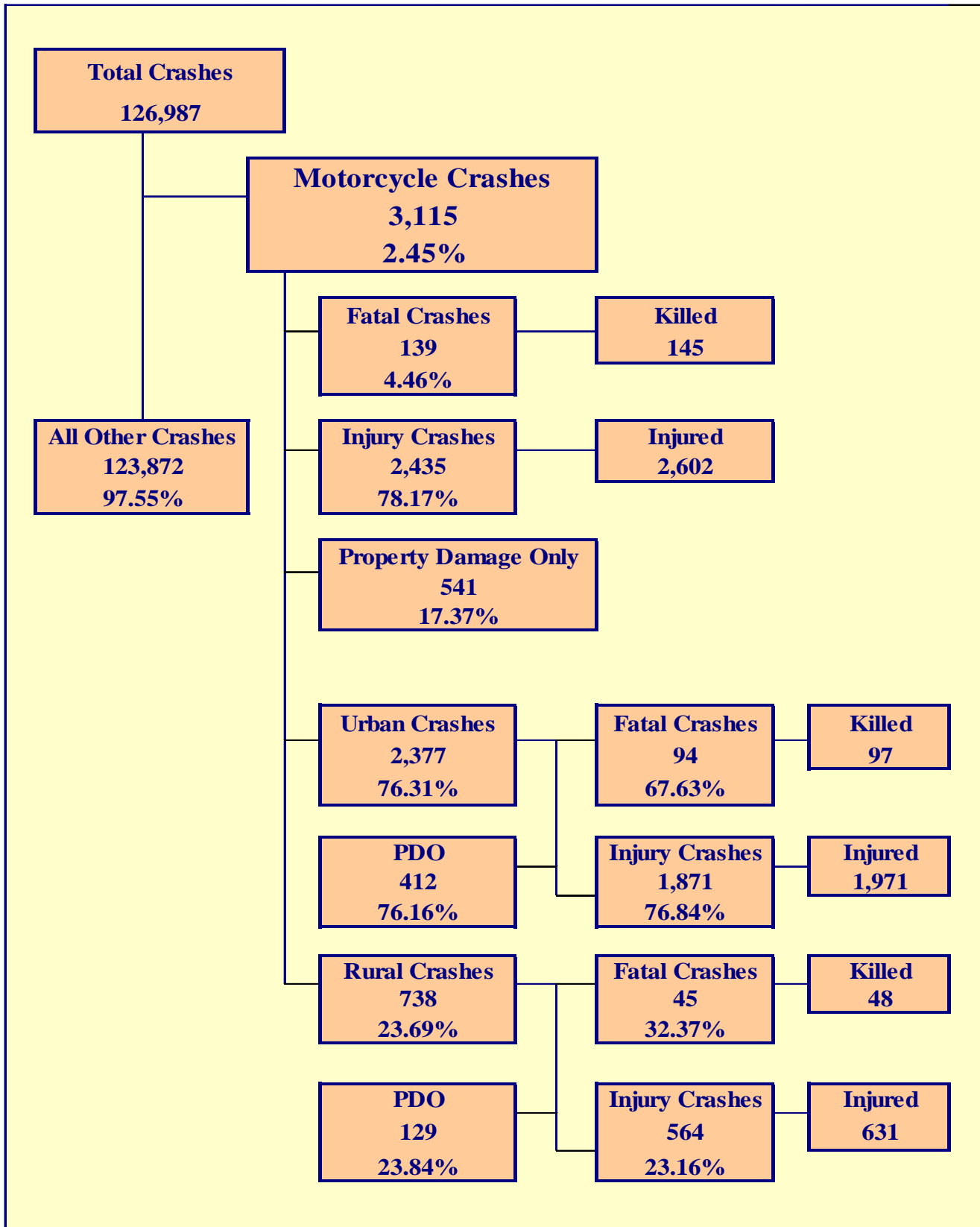
Section 7: – Pedestrian and Pedalcyclist Crashes

Table 7 – 14
Pedestrian Crashes by County

County	Number of Crashes				Number of Pedestrians	
	Total	Fatal	Injury	PDO	Killed	Injured
Apache	7	5	2	0	5	2
Cochise	10	2	8	0	2	9
Coconino	33	5	26	2	5	27
Gila	5	2	3	0	2	3
Graham	3	0	3	0	0	3
Greenlee	0	0	0	0	0	0
La Paz	2	2	0	0	2	1
Maricopa	1,214	136	1,036	42	135	1,081
Mohave	21	4	16	1	4	16
Navajo	12	4	7	1	4	7
Pima	263	23	237	3	23	243
Pinal	28	6	19	3	6	23
Santa Cruz	2	0	1	1	0	1
Yavapai	20	3	17	0	4	18
Yuma	23	1	22	0	1	24
TOTAL	1,643	193	1,397	53	193	1,458

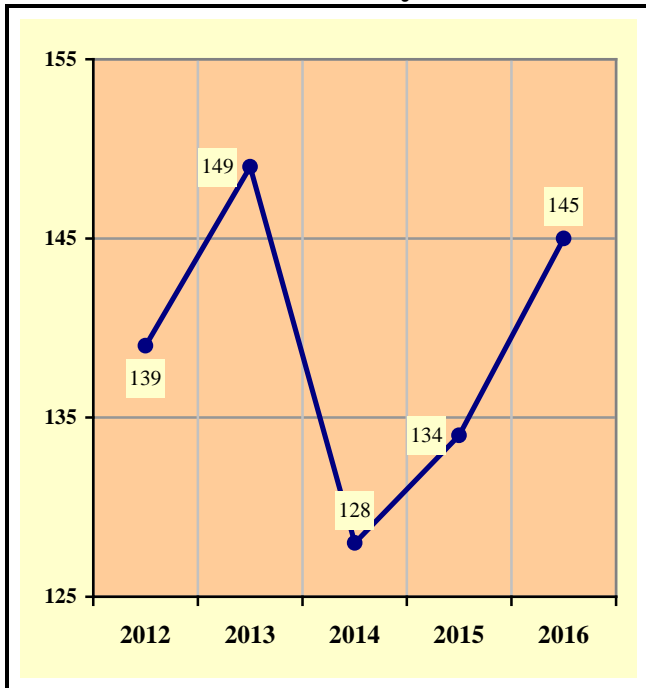
Table 7 – 15
Pedalcyclist Crashes by County

County	Number of Crashes				Number of Pedalcyclists	
	Total	Fatal	Injury	PDO	Killed	Injured
Apache	0	0	0	0	0	0
Cochise	6	0	6	0	0	6
Coconino	35	0	31	4	0	31
Gila	5	0	5	0	0	5
Graham	2	0	2	0	0	2
Greenlee	0	0	0	0	0	0
La Paz	0	0	0	0	0	0
Maricopa	1,087	24	981	82	23	992
Mohave	21	0	18	3	0	19
Navajo	4	0	4	0	0	4
Pima	246	5	222	19	6	225
Pinal	25	2	21	2	2	21
Santa Cruz	0	0	0	0	0	0
Yavapai	14	0	12	2	0	12
Yuma	34	0	33	1	0	33
TOTAL	1,479	31	1,335	113	31	1,350

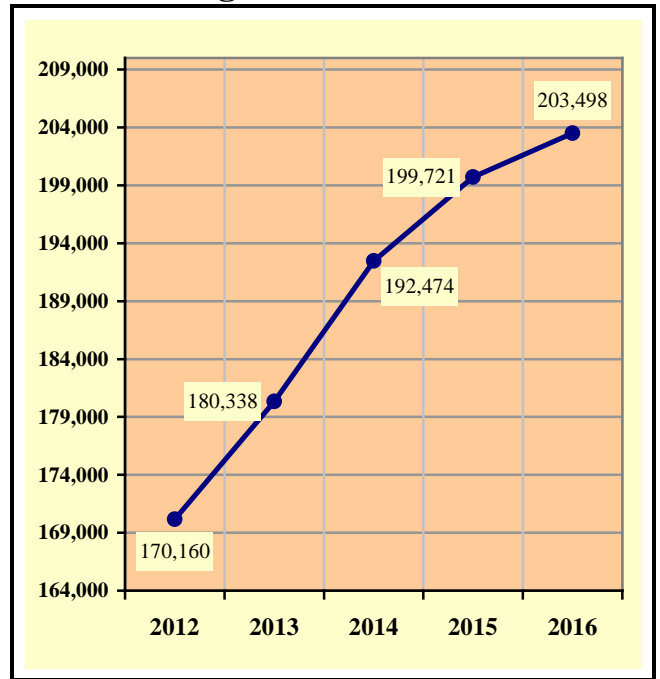


Section 8: – Motorcycle (MC) Crashes

**Chart 8 – 1
MC Fatalities by Year**

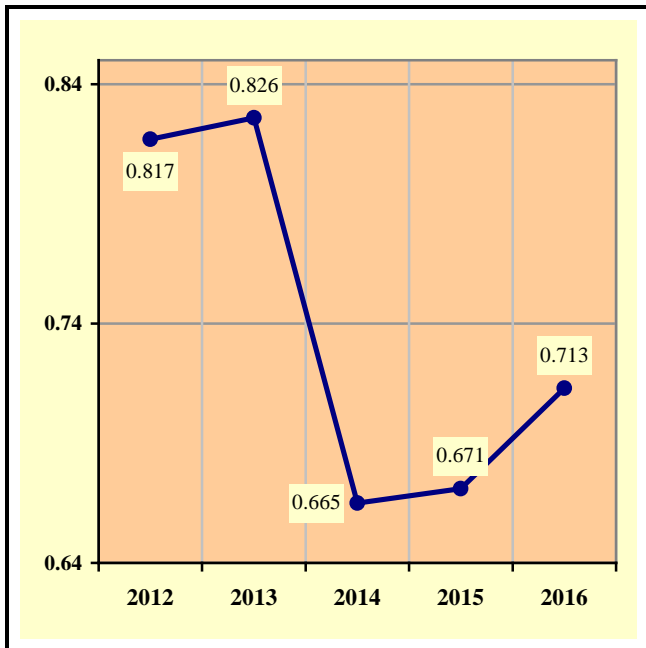


**Chart 8 – 2
MC Registrations in Arizona**

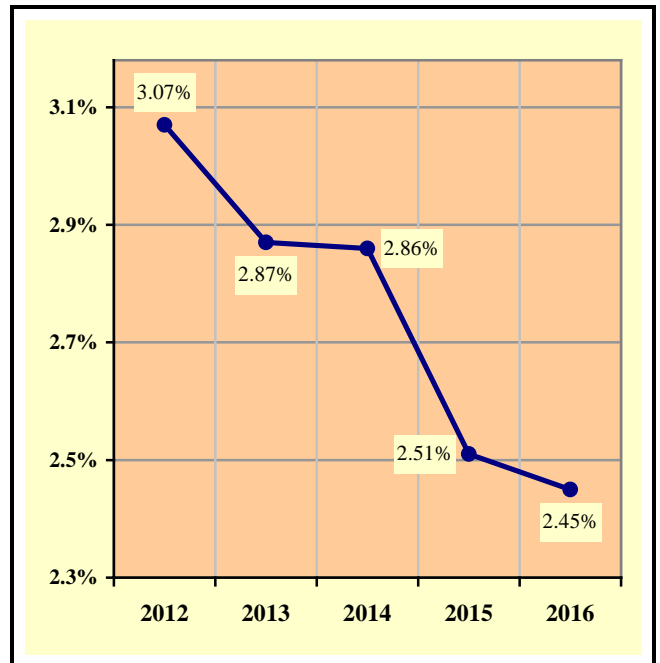


Total Point-in-Time of Registered Motorcycles at the end of
Calendar year 2016.
(Source: MVD - MV988 MV630419 Currently Registered Vehicles by County
Listing (motorcycle sub category), reports dated 12/31/16.)

**Chart 8 – 3
Fatality Rate per Registered MC**



**Chart 8 – 4
Percent of MC Crashes to All Crashes**



Section 8: – Motorcycle (MC) Crashes

**Table 8 – 1
MC Crashes by First Harmful Event**

First Harmful Event Type	Number of Crashes			
	Total	Fatal	Injury	PDO
Collision with Motor Vehicle in Transport	1,783	85	1,317	381
Overtuning	697	24	607	66
Collision with Pedestrian	19	0	19	0
Collision with Pedalcyclist	13	0	12	1
Collision with Animal	31	0	24	7
Collision with Fixed Object	311	28	257	26
Collision with Non-fixed Object*	76	2	45	29
Vehicle Fire or Explosion	2	0	1	1
Other Non-collision**	53	0	45	8
Unknown	130	0	108	22
TOTAL	3,115	139	2,435	541
*Includes Collision with Parked Vehicles, Trains, Railway Vehicles, and Work Zone Equipment				
**Includes Vehicle Immersion, Jackknife, and Cargo Loss or Shift				

**Table 8 – 2
Lighting Conditions in MC Crashes**

Type of Lighting Conditions	Number of Crashes			
	Total	Fatal	Injury	PDO
Daylight	2,107	75	1,658	374
Dawn	49	1	39	9
Dusk	114	8	85	21
Dark - Lighted	668	42	516	110
Dark - Not Lighted	163	11	129	23
Dark - Unknown Lighting	14	2	8	4
TOTAL	3,115	139	2,435	541

**Table 8 – 3
Road Surface Conditions in MC Crashes**

Type of Road Surface Condition	Number of Operators			
	Total	In Fatal Crashes	In Injury Crashes	In PDO Crashes
Dry	3,049	138	2,394	517
Wet	84	3	63	18
Snow	0	0	0	0
Slush	3	0	0	3
Ice/Frost	0	0	0	0
Water (standing or moving)	1	0	1	0
Sand	3	0	2	1
Mud, Dirt, Gravel	23	1	15	7
Oil	9	0	9	0
Other	4	0	3	1
Unknown	14	1	2	11
TOTAL	3,190	143	2,489	558

Section 8: – Motorcycle (MC) Crashes

Table 8 – 4
MC Crashes by Geographic Location

Category	Total	Urban	Percent of Total	Rural	Percent of Total
Total Crashes	3,115	2,377	76.31%	738	23.69%
Fatal Crashes	139	94	67.63%	45	32.37%
Injury Crashes	2,435	1,871	76.84%	564	23.16%
PDO Crashes	541	412	76.16%	129	23.84%
Persons Killed	145	97	66.90%	48	33.10%
Persons Injured	2,602	1,971	75.75%	631	24.25%

Table 8 – 5
Operator Involvement by Age in MC Crashes

Operator Age Group	Number of Operators							
	Total	Percent of Total	In Fatal Crashes	Percent of Fatal	In Injury Crashes	Percent of Injury	In PDO Crashes	Percent of PDO
15 & Under	9	0.28%	1	0.70%	8	0.32%	0	0.00%
16	13	0.41%	0	0.00%	12	0.48%	1	0.18%
17	14	0.44%	0	0.00%	11	0.44%	3	0.54%
18	41	1.29%	2	1.40%	31	1.25%	8	1.43%
19	78	2.45%	1	0.70%	62	2.49%	15	2.69%
20	97	3.04%	1	0.70%	75	3.01%	21	3.76%
21	96	3.01%	3	2.10%	80	3.21%	13	2.33%
22	118	3.70%	1	0.70%	101	4.06%	16	2.87%
23	89	2.79%	3	2.10%	73	2.93%	13	2.33%
24	101	3.17%	5	3.50%	81	3.25%	15	2.69%
25-34	711	22.29%	27	18.88%	574	23.06%	110	19.71%
35-44	487	15.27%	27	18.88%	382	15.35%	78	13.98%
45-54	559	17.52%	32	22.38%	442	17.76%	85	15.23%
55-64	459	14.39%	25	17.48%	359	14.42%	75	13.44%
65-74	192	6.02%	12	8.39%	150	6.03%	30	5.38%
75 & Older	30	0.94%	3	2.10%	21	0.84%	6	1.08%
Unknown	96	3.01%	0	0.00%	27	1.08%	69	12.37%
TOTAL	3,190	100.00%	143	100.00%	2,489	100.00%	558	100.00%

Table 8 – 6
MC Operator Physical Condition

Type of Condition	Number of Operators							
	Total	Percent of Total	In Fatal Crashes	Percent of Fatal	In Injury Crashes	Percent of Injury	In PDO Crashes	Percent of PDO
No Apparent Influence	2,704	84.76%	50	34.97%	2,170	87.18%	484	86.74%
Alcohol	183	5.74%	43	30.07%	133	5.34%	7	1.25%
Appeared to be Under the Influence of Drugs*	20	0.63%	14	9.79%	6	0.24%	0	0.00%
Medications	1	0.03%	0	0.00%	1	0.04%	0	0.00%
Illness	5	0.16%	0	0.00%	4	0.16%	1	0.18%
Physical Impairment	1	0.03%	0	0.00%	1	0.04%	0	0.00%
Fell Asleep or Fatigued	5	0.16%	0	0.00%	4	0.16%	1	0.18%
Other	21	0.66%	0	0.00%	11	0.44%	10	1.79%
Unknown	250	7.84%	36	25.17%	159	6.39%	55	9.86%
TOTAL	3,190	100.00%	143	100.00%	2,489	100.00%	558	100.00%

*Illegal drugs or narcotics

Section 8: – Motorcycle (MC) Crashes

Table 8 – 7
Helmet Use by Gender

Gender	Number of Operators and Passengers							
	Helmet Used	Percent of Helmet Used	Helmet Not Used	Percent of Helmet Not Used	Helmet Use Unknown	Percent of Unknown	Total	Percent of Total
Male	1,412	88.58%	708	86.45%	810	80.36%	2,930	85.65%
Female	180	11.29%	108	13.19%	133	13.19%	421	12.31%
Unknown	2	0.13%	3	0.37%	65	6.45%	70	2.05%
TOTAL	1,594	100.00%	819	100.00%	1,008	100.00%	3,421	100.00%

Table 8 – 8
MC Operator’s Helmet Use

Severity of Injury	Helmet Used	Percent of Total	Helmet Not Used	Percent of Total	Unknown	Percent of Total	Total	Percent of Total
No Injury	248	16.43%	88	11.72%	238	25.59%	574	17.99%
Unknown Injury	6	0.40%	5	0.67%	44	4.73%	55	1.72%
Possible Injury	253	16.77%	96	12.78%	165	17.74%	514	16.11%
Non-Incapacitating Injury	645	42.74%	305	40.61%	301	32.37%	1,251	39.22%
Incapacitating Injury	306	20.28%	186	24.77%	169	18.17%	661	20.72%
Fatal Injury	51	3.38%	71	9.45%	13	1.40%	135	4.23%
TOTALS	1,509	100.00%	751	100.00%	930	100.00%	3,190	100.00%

Table 8 – 9
MC Passenger’s Helmet Use

Severity of Injury	Helmet Used	Percent of Total	Helmet Not Used	Percent of Total	Unknown	Percent of Total	Total	Percent of Total
No Injury	14	16.47%	8	11.76%	18	23.08%	40	17.32%
Unknown Injury	0	0.00%	1	1.47%	4	5.13%	5	2.16%
Possible Injury	15	17.65%	8	11.76%	16	20.51%	39	16.88%
Non-Incapacitating Injury	40	47.06%	29	42.65%	27	34.62%	96	41.56%
Incapacitating Injury	13	15.29%	15	22.06%	13	16.67%	41	17.75%
Fatal Injury	3	3.53%	7	10.29%	0	0.00%	10	4.33%
TOTALS	85	100.00%	68	100.00%	78	100.00%	231	100.00%

Section 8: – Motorcycle (MC) Crashes

Table 8 – 10

MC Operators and Passengers Killed and Injured

Age of Victim	Persons Killed			Persons Injured			
	Total	Male	Female	Total	Male	Female	Gender Unknown
0-4	0	0	0	1	1	0	0
5-9	0	0	0	4	3	1	0
10-14	0	0	0	13	8	5	0
15-19	5	4	1	131	115	16	0
20-24	13	12	1	419	388	31	0
25-34	26	23	3	596	529	67	0
35-44	27	26	1	408	348	60	0
45-54	35	31	4	461	374	87	0
55-64	24	23	1	375	323	52	0
65-74	12	11	1	153	141	12	0
75 & Older	3	3	0	21	19	2	0
Unknown	0	0	0	20	14	3	3
TOTAL	145	133	12	2,602	2,263	336	3

Table 8 – 11

MC Operator Violations

Type of Violation or Behavior	Number of Operators							
	Total	Percent of Total	In Fatal Crashes	Percent of Fatal	In Injury Crashes	Percent of Injury	In PDO Crashes	Percent of PDO
No Improper Action	1,569	49.18%	45	31.47%	1,237	49.70%	287	51.43%
Speed too Fast for Conditions	766	24.01%	28	19.58%	617	24.79%	121	21.68%
Exceeded Lawful Speed	72	2.26%	11	7.69%	55	2.21%	6	1.08%
Failed to Yield Right-Of-Way	81	2.54%	5	3.50%	52	2.09%	24	4.30%
Followed Too Closely	79	2.48%	2	1.40%	55	2.21%	22	3.94%
Ran Stop Sign	20	0.63%	3	2.10%	16	0.64%	1	0.18%
Disregarded Traffic Signal	43	1.35%	5	3.50%	36	1.45%	2	0.36%
Made Improper Turn	29	0.91%	1	0.70%	19	0.76%	9	1.61%
Drove in Opposing Lane	22	0.69%	3	2.10%	17	0.68%	2	0.36%
Knowingly Operated with Faulty or Missing Equipment	11	0.34%	1	0.70%	8	0.32%	2	0.36%
Required Motorcycle Safety Equipment Not Used	9	0.28%	4	2.80%	4	0.16%	1	0.18%
Passed in No-Passing Zone	8	0.25%	0	0.00%	7	0.28%	1	0.18%
Unsafe Lane Change	41	1.29%	0	0.00%	33	1.33%	8	1.43%
Failed to Keep in Proper Lane	94	2.95%	13	9.09%	74	2.97%	7	1.25%
Disregarded Pavement Markings	6	0.19%	1	0.70%	4	0.16%	1	0.18%
Other Unsafe Passing	27	0.85%	0	0.00%	17	0.68%	10	1.79%
Other	98	3.07%	3	2.10%	80	3.21%	15	2.69%
Unknown	215	6.74%	18	12.59%	158	6.35%	39	6.99%
TOTAL	3,190	100.00%	143	100.00%	2,489	100.00%	558	100.00%

Section 8: – Motorcycle (MC) Crashes

Chart 8 – 5

All MC Crashes vs. Fatal MC Crashes by Time of Day - Weekdays

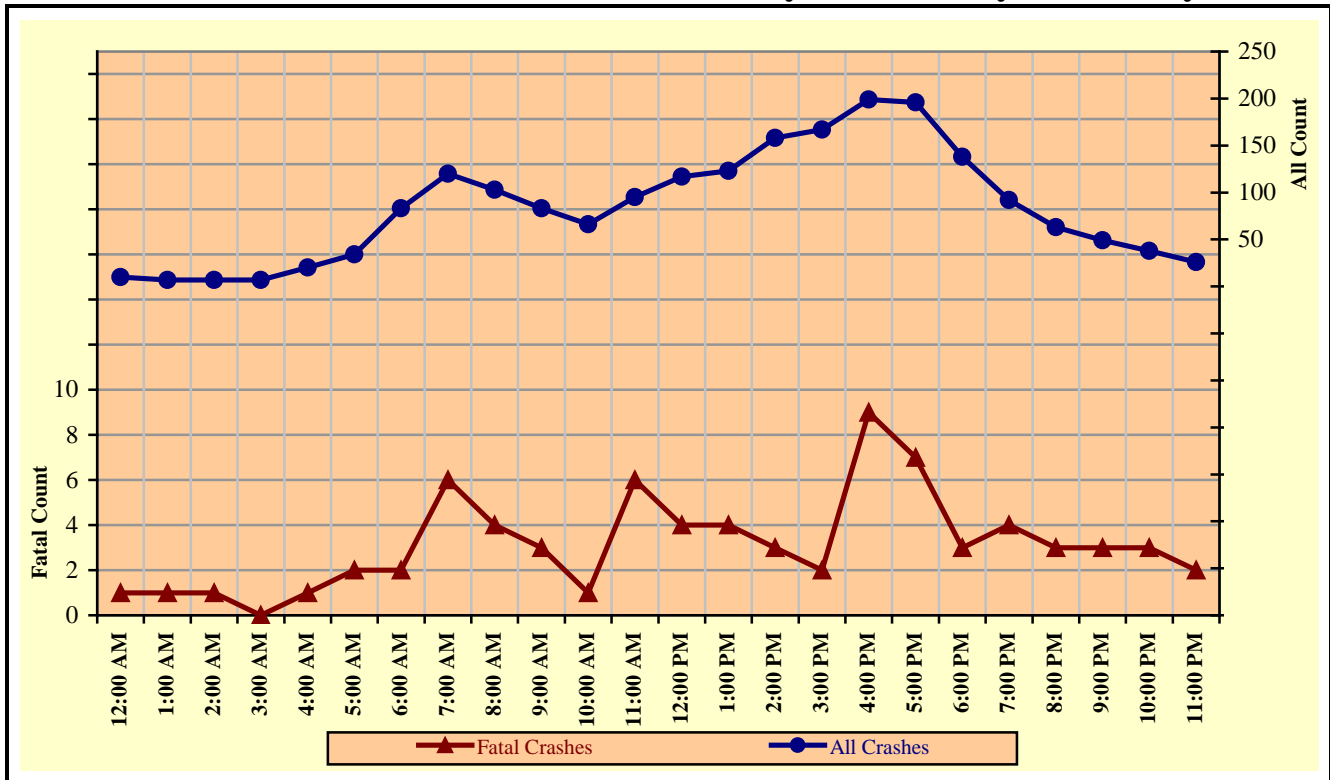
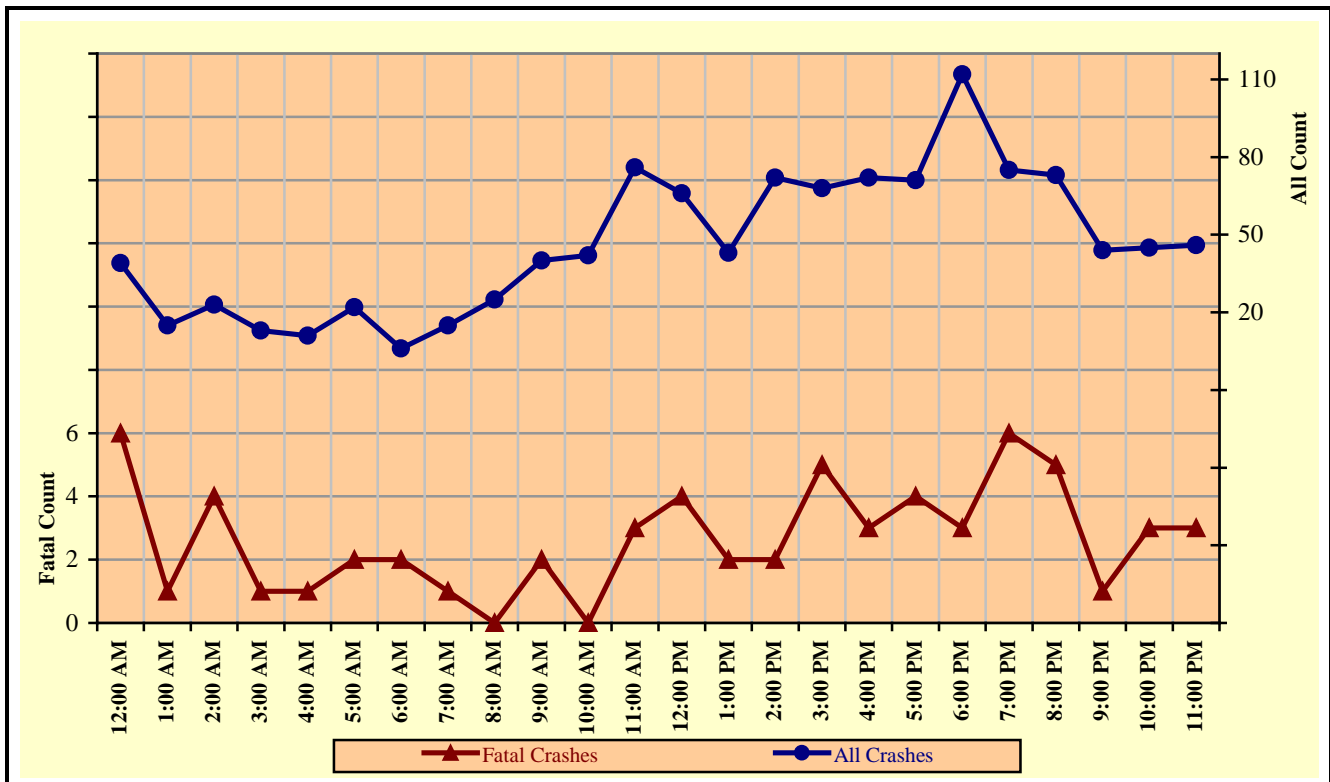


Chart 8 – 6

All MC Crashes vs. Fatal MC Crashes by Time of Day - Weekends



Section 8: – Motorcycle (MC) Crashes

Chart 8 – 7
All MC Crashes vs. Fatal MC Crashes by Day of Week

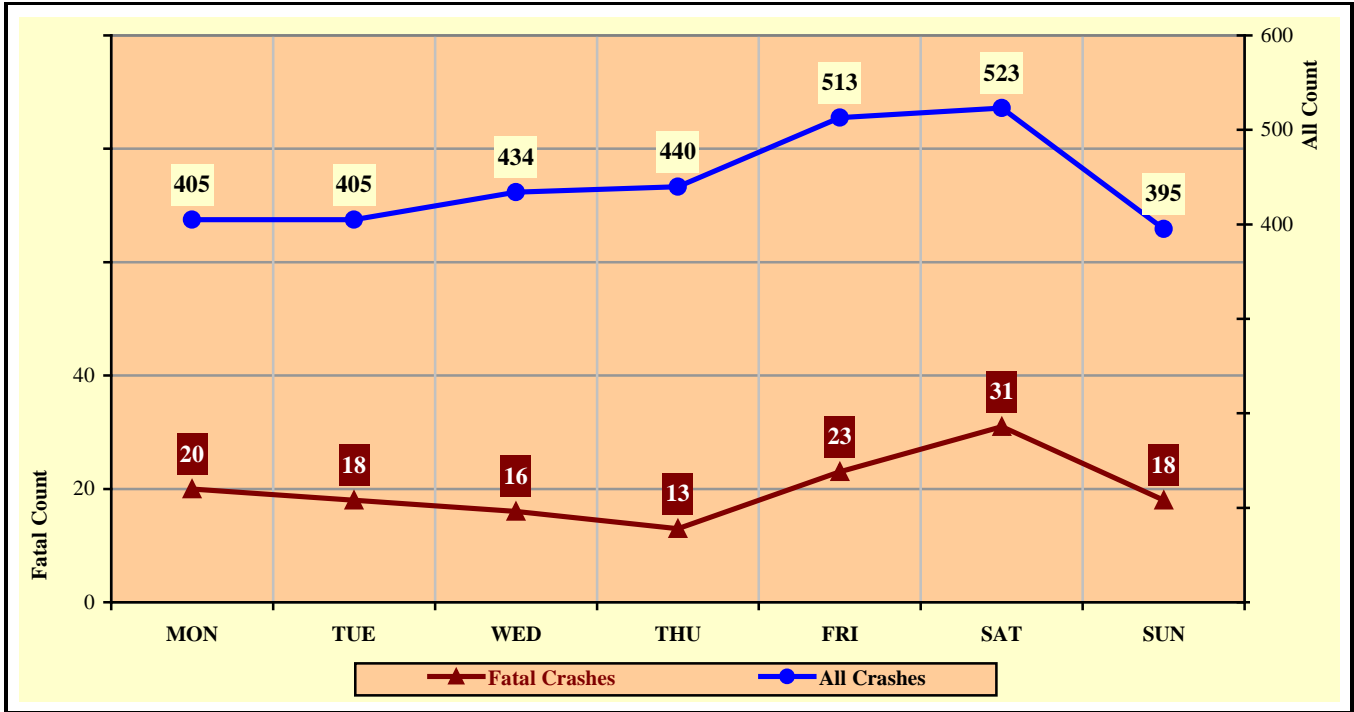
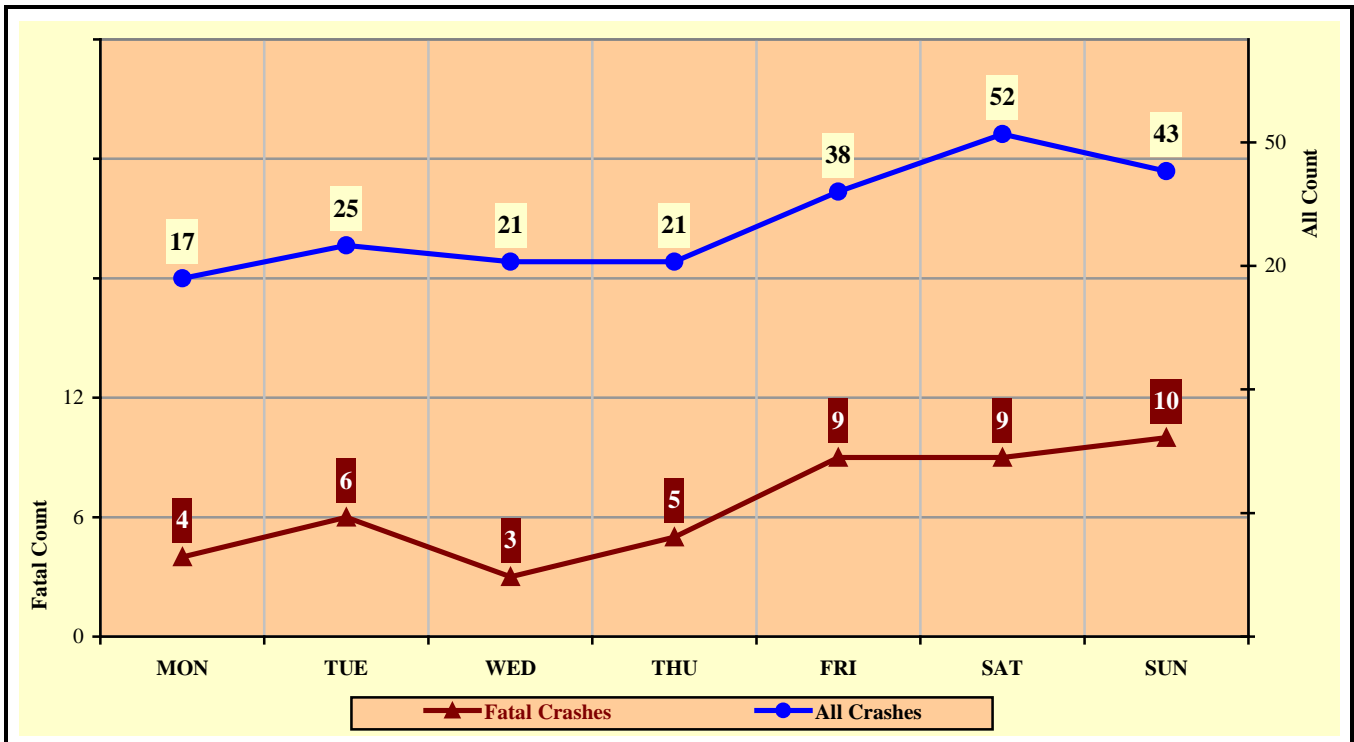


Chart 8 – 8
Alcohol Related MC Crashes vs. Fatal Alcohol Related MC Crashes by Day of Week



Section 8: – Motorcycle (MC) Crashes

Table 8 – 12
MC Crashes by Hour and Day of Week

Hour Beginning	Total Crashes		Monday		Tuesday		Wednesday		Thursday		Friday		Saturday		Sunday		Weekdays		Weekends	
	All	Fatal	All	Fatal	All	Fatal	All	Fatal	All	Fatal	All	Fatal	All	Fatal	All	Fatal	All	Fatal	All	Fatal
12:00 AM	49	7	4	0	2	1	5	0	1	0	2	0	17	3	18	3	10	1	39	6
1:00 AM	22	2	4	0	1	1	1	0	1	0	4	0	6	0	5	1	7	1	15	1
2:00 AM	30	5	3	1	1	0	1	0	2	0	3	1	8	3	12	0	7	1	23	4
3:00 AM	20	1	3	0	1	0	3	0	2	0	1	0	6	0	4	1	7	0	13	1
4:00 AM	31	2	4	0	6	0	4	0	6	0	4	1	3	1	4	0	20	1	11	1
5:00 AM	56	4	10	2	9	0	5	0	12	1	8	1	4	0	8	0	34	2	22	2
6:00 AM	89	4	13	1	15	0	13	1	25	0	17	0	5	2	1	0	83	2	6	2
7:00 AM	135	7	22	2	29	2	28	1	21	1	20	0	9	1	6	0	120	6	15	1
8:00 AM	128	4	18	2	20	1	21	1	25	0	19	0	20	0	5	0	103	4	25	0
9:00 AM	123	5	16	0	16	0	17	1	17	0	17	2	22	2	18	0	83	3	40	2
10:00 AM	108	1	13	0	13	0	11	1	11	0	18	0	26	0	16	0	66	1	42	0
11:00 AM	171	9	14	1	12	4	22	0	16	0	31	1	41	0	35	3	95	6	76	3
12:00 PM	183	8	25	3	22	0	24	0	19	0	27	1	42	4	24	0	117	4	66	4
1:00 PM	166	6	23	0	17	0	34	2	26	2	23	0	27	2	16	0	123	4	43	2
2:00 PM	230	5	31	1	32	0	28	2	27	0	40	0	33	1	39	1	158	3	72	2
3:00 PM	235	7	33	1	36	0	25	1	39	0	34	0	41	3	27	2	167	2	68	5
4:00 PM	271	12	34	2	39	2	54	1	38	3	34	1	46	2	26	1	199	9	72	3
5:00 PM	267	11	23	0	39	2	42	2	49	0	43	3	32	2	39	2	196	7	71	4
6:00 PM	250	6	41	0	29	1	38	1	30	1	46	2	38	0	28	1	138	3	112	3
7:00 PM	167	10	22	2	25	1	14	0	31	1	25	3	27	1	23	2	92	4	75	6
8:00 PM	136	8	18	0	15	1	15	1	15	1	34	3	25	2	14	0	63	3	73	5
9:00 PM	93	4	14	0	13	1	11	1	11	1	20	1	15	0	9	0	49	3	44	1
10:00 PM	83	6	14	2	8	1	7	0	9	0	20	1	12	1	13	1	38	3	45	3
11:00 PM	72	5	3	0	5	0	11	0	7	2	23	2	18	1	5	0	26	2	46	3
TOTAL	3,115	139	405	20	405	18	434	16	440	13	513	23	523	31	395	18	2,001	75	1,114	64

Crashes during Weekends accounted for 35.76% of all MC crashes and 46.04% of Fatal MC Crashes.

Crashes during Weekdays accounted for 64.24% of all MC crashes and 53.96% of Fatal MC Crashes.

Section 8: – Motorcycle (MC) Crashes

Table 8 – 13

MC Crashes by County

County	Number of Crashes				Number of Persons	
	Total	Fatal	Injury	PDO	Killed	Injured
Apache	6	0	5	1	0	5
Cochise	57	3	45	9	3	49
Coconino	75	1	48	26	1	63
Gila	34	4	27	3	5	33
Graham	5	1	4	0	1	5
Greenlee	8	0	7	1	0	9
La Paz	17	2	15	0	2	18
Maricopa	2,056	84	1,610	362	86	1,690
Mohave	110	9	80	21	10	90
Navajo	14	0	10	4	0	14
Pima	385	18	316	51	19	330
Pinal	145	8	113	24	8	130
Santa Cruz	11	0	11	0	0	11
Yavapai	133	6	99	28	7	107
Yuma	59	3	45	11	3	48
TOTAL	3,115	139	2,435	541	145	2,602

Table 8 – 14

Manner of Collision in MC Crashes

Manner of Collision Type	Number of Crashes							
	Total	Percent of All Crashes	Fatal	Percent of Fatal Crashes	Injury	Percent of Injury Crashes	PDO	Percent of PDO Crashes
Angle	326	16.32%	20	21.28%	270	18.29%	36	8.43%
Left Turn	497	24.89%	33	35.11%	389	26.36%	75	17.56%
Rear End	669	33.50%	15	15.96%	449	30.42%	205	48.01%
Head-On	39	1.95%	4	4.26%	30	2.03%	5	1.17%
Sideswipe (same)	279	13.97%	11	11.70%	197	13.35%	71	16.63%
Sideswipe (opposite)	32	1.60%	0	0.00%	28	1.90%	4	0.94%
Rear to Side	9	0.45%	0	0.00%	5	0.34%	4	0.94%
Rear to Rear	3	0.15%	0	0.00%	2	0.14%	1	0.23%
Other	127	6.36%	11	11.70%	95	6.44%	21	4.92%
Unknown	16	0.80%	0	0.00%	11	0.75%	5	1.17%
TOTAL	1,997	100.00%	94	100.00%	1,476	100.00%	427	100.00%

Note: Includes only multi-vehicle MC crashes

Acknowledgements

Special gratitude to our other providers of data and information including:

The Information Technology Group, Arizona Department of Transportation

Motor Vehicle Division, Arizona Department of Transportation

Multimodal Planning Division, Arizona Department of Transportation

The Federal Highway Administration, U.S. Department of Transportation

National Highway Transportation Safety Administration