

Arizona Department of Transportation

ARIZONA HIGHWAY USER REVENUE FUND

Forecasting Process & Results

FY 2006-2015



Financial Management Services

November 2005

**ARIZONA HIGHWAY USER REVENUE FUND
OFFICIAL FORECAST UPDATE
RISK ANALYSIS OF EXPECTED VALUES
as of November 2005**

Introduction

This document presents the Arizona Department of Transportation's (Department) forecast of expected values for the Arizona Highway User Revenue Fund for the period FY 2006-2015.

Background

The State of Arizona taxes motor fuels and collects a variety of fees relating to the registration and operation of motor vehicles in the state. These collections include gasoline and use fuel taxes, motor carrier fees, vehicle license taxes, motor vehicle registration fees, and other miscellaneous fees. These revenues are deposited in the Arizona Highway User Revenue Fund (HURF) and are then distributed to the cities, towns and counties of the State and to the State Highway Fund, which is administered by the Department. These taxes and fees represent the primary source of revenues available to the state for highway construction, improvements and other related expenses.

Since 1986, the Department has estimated Highway Revenues for the State using a comprehensive regression-based econometric model. In 1989, the model was updated by Dr. Alberta Charney of the University of Arizona. The model relied on the estimates of certain "independent variables" to predict future tax revenues. The model's revenue forecast was highly dependent on estimates of the independent variables. Any variability between estimated and actual values could lead to variances in the tax forecast. In order to deal with this variability, the Department introduced the Risk Analysis Process (RAP) in 1992. The RAP relies upon probability analysis and the independent evaluation of the model's variables by an expert panel of economists. This results in a series of forecasts with specified probabilities of occurrence, rather than a single or "best guess" estimate.

In 1997, Hickling Lewis Brod Inc. (HLB), working in conjunction with Dr. Dennis Hoffman of Arizona State University, developed a new forecasting model to incorporate certain economic data generated over the past ten years and evaluate the inclusion of independent variables absent from the 1989 model, to enhance the model's forecasting accuracy. HLB also eliminated independent variables that were either not significant to the model or were not readily available. The new model also took into consideration 1997 legislation (SB 1144 and SB 1398) which eliminated the weight distance tax on motor carriers, increased weight and use fees for use class vehicles, and changed the point of taxation on fuel. In September 2000 and 2003, HLB reviewed the model and updated the equations. The independent variables contained in the model included Arizona real income growth per capita, population growth, wage & salary employment growth and fleet fuel efficiency.

In 2005, HDR\HLB developed a new forecasting model to incorporate additional economic data that would enhance the model's forecasting accuracy. The Arizona real gross state product independent variable was added to the model to incorporate the impact of the Arizona economy on the commercial registration activities. The independent variables contained in the updated model include:

- Arizona real income growth per capita
- Arizona population growth
- Arizona wage & salary employment growth
- Arizona real gross state product
- Arizona fleet fuel efficiency

Risk Analysis Panel

The Risk Analysis Process relies heavily on the judgments of an expert panel of economic and financial participants to provide information critical to the forecasting process. In September 2005, a panel of twelve economic and finance experts representing public, private, and academic sectors submitted their individual estimates of the model's independent variables and comments on the future economic outlook.

The information gathered from the panelists was input into the updated model to produce a series of forecasts with associated probabilities of occurrence. The panelists' inputs are reflected in the attached tables at the back of this report.

Model Results

This year's panel inputs produced a mean forecast of \$16,527.5 million for the period FY 2006-2015 with a compound growth rate of 5.0 percent.

The Department's Official Forecast for FY 2006-2015 totals \$16,395.6 million with a compound growth rate of 5.0 percent. The Official Forecast incorporates the 50 percent confidence interval for each year of the forecast. The FY 2006 forecast of \$1,306.3 million was developed in July 2005 by ADOT staff using time-series techniques, historical and projected growth rates from the model, and recent legislative changes.

FY 2006 Official Forecast			
(Dollars in Millions)			
Fiscal	Mean	Official	Confidence
<u>Year</u>	<u>Forecast</u>	<u>Forecast</u>	<u>Level</u>
2006	\$1,311.7	\$1,306.3	N/A
2007	\$1,384.1	\$1,375.1	50%
2008	\$1,454.9	\$1,443.3	50%
2009	\$1,524.9	\$1,513.3	50%
2010	\$1,597.4	\$1,584.8	50%
2011	\$1,674.5	\$1,660.6	50%
2012	\$1,756.8	\$1,742.0	50%
2013	\$1,844.7	\$1,827.9	50%
2014	\$1,938.9	\$1,920.5	50%
2015	<u>\$2,039.6</u>	<u>\$2,021.7</u>	50%
Total	\$16,527.5	\$16,395.6	
Ave. CGR	5.0%	5.0%	

For comparison purposes, the November 2004 Official Forecast and the November 2005 Official Forecast are shown below:

FY 2006 Comparative Forecast			
(Dollars in Millions)			
Fiscal Year	Nov. 04 Official Forecast	Nov. 05 Official Forecast	Difference
2006	\$1,303.1	\$1,306.3	\$3.2
2007	\$1,378.1	\$1,375.1	(\$3.0)
2008	\$1,443.4	\$1,443.3	(\$0.1)
2009	\$1,511.8	\$1,513.3	\$1.5
2010	\$1,574.4	\$1,584.8	\$10.4
2011	\$1,645.5	\$1,660.6	\$15.0
2012	\$1,715.4	\$1,742.0	\$26.6
2013	\$1,794.3	\$1,827.9	\$33.6
2014	\$1,871.7	\$1,920.5	\$48.8
2015	<u>\$1,952.5</u>	<u>\$2,021.7</u>	<u>\$69.2</u>
Total	\$16,190.3	\$16,395.6	\$205.3
Ave. CGR	4.6%	5.0%	

Summary

The Department's Official Forecast for FY 2006-2015 totals \$16,395.6 million, an increase of \$205.3 million over the November 2004 Official Forecast. This reflects the panel members' positive outlook for Arizona's future economic picture. The Risk Analysis Process panel members forecasted slightly lower growth in Arizona real per capita personal income for FY 2006-2010 compared to their September 2004 inputs. This could have been due to timing since the RAP panel session was held three weeks after hurricane Katrina, which caused fuel prices to skyrocket and increase fear of inflation. The panel members provided slightly higher growth for Arizona wage & salary employment and population growth over the FY 2006-2015 period. Overall, the panel members varied only modestly from their inputs from last year's RAP panel session.

Supplementary Information

The remaining pages of this report present supplementary information on the detailed results of the Risk Analysis Process, the Department's model and the values of the independent variables forecast by the expert panel. While the Official Forecast period is FY 2006-2015, panel inputs were requested for FY 2006-2010, 2011, 2016, 2021 and 2026. Data displayed for other than the requested years, has been extrapolated.

HURF OFFICIAL REVENUE FORECAST
With Category Detail and Confidence Interval By Fiscal Year
(Current Dollars in Millions)

Fiscal Year Percentile	2005 Actual	2006 50%	2007 50%	2008 50%	2009 50%	2010 50%	2011 50%	2012 50%	2013 50%	2014 50%	2015 50%
Gasoline Tax	\$481.3	\$497.2	\$528.8	\$550.5	\$572.3	\$594.6	\$616.4	\$639.7	\$663.9	\$689.8	\$717.8
Use Fuel Tax	194.4	205.0	211.0	218.9	226.7	234.2	241.9	249.8	258.3	267.1	276.8
Motor Carrier Fee	38.0	40.3	39.7	40.8	42.0	43.3	45.0	46.9	48.9	51.3	53.6
Vehicle License Tax	328.2	350.3	378.9	409.3	441.5	474.5	510.9	550.4	592.5	637.9	688.7
Registration	154.1	160.3	162.3	167.1	171.8	176.9	182.7	189.0	195.4	202.7	210.2
Other	49.6	53.2	54.4	56.7	59.0	61.3	63.7	66.2	68.9	71.7	74.6
Total	\$1,245.6	\$1,306.3	\$1,375.1	\$1,443.3	\$1,513.3	\$1,584.8	\$1,660.6	\$1,742.0	\$1,827.9	\$1,920.5	\$2,021.7

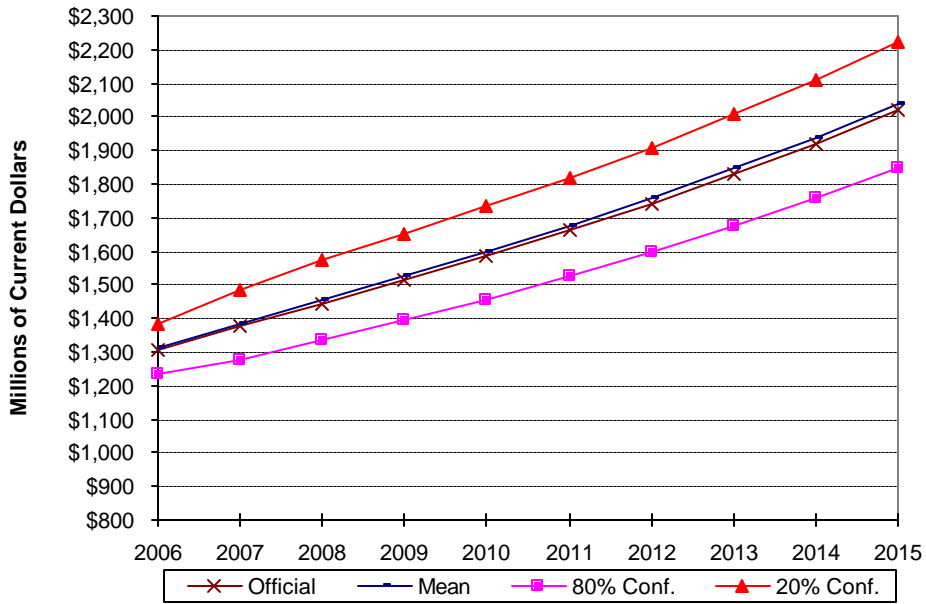
HURF TOTAL TAX REVENUE RISK ANALYSIS RESULTS
(Current Dollars in Millions)

Fiscal Year	Mean	10%	20%	30%	40%	50%	60%	70%	80%	90%
2006	\$1,311.7	\$1,428.3	\$1,385.0	\$1,354.5	\$1,329.1	\$1,306.7	\$1,284.5	\$1,261.5	\$1,236.6	\$1,202.3
2007	1,384.1	1,548.4	1,486.3	1,441.6	1,407.2	1,375.1	1,344.2	1,312.0	1,279.0	1,233.0
2008	1,454.9	1,643.3	1,571.2	1,520.4	1,480.2	1,443.3	1,409.0	1,372.7	1,333.8	1,281.9
2009	1,524.9	1,728.9	1,652.2	1,596.2	1,552.1	1,513.3	1,475.4	1,436.0	1,393.0	1,338.0
2010	1,597.4	1,814.7	1,732.0	1,674.1	1,626.7	1,584.8	1,544.8	1,501.7	1,455.9	1,397.1
2011	1,674.5	1,905.8	1,818.5	1,756.4	1,704.0	1,660.6	1,617.9	592.5	1,525.2	1,460.8
2012	1,756.8	2,002.0	1,910.1	1,842.7	1,788.9	1,742.0	1,697.0	1,650.4	1,596.8	1,529.1
2013	1,844.7	2,105.1	2,007.5	1,936.4	1,879.3	1,827.9	1,780.6	1,731.7	1,675.4	1,602.6
2014	1,938.9	2,214.2	2,109.3	2,037.8	1,974.3	1,920.5	1,871.5	1,820.6	1,759.1	1,682.6
2015	2,039.6	2,335.7	2,221.8	2,141.4	2,075.4	2,021.7	1,969.2	1,915.8	1,848.0	1,767.6

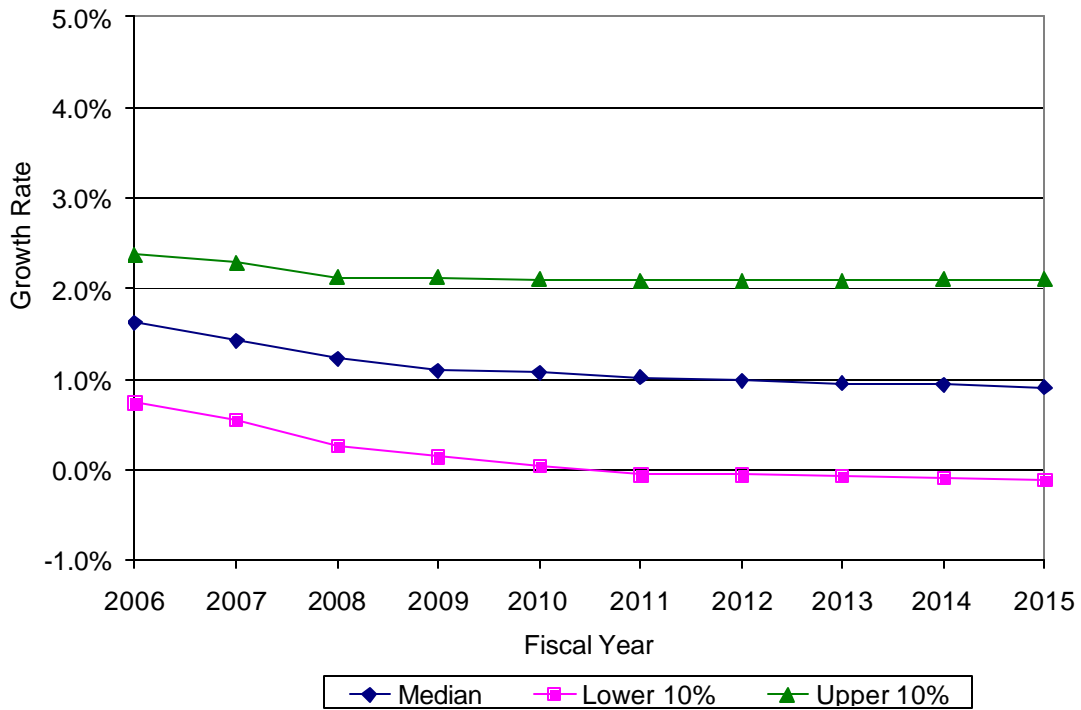
OFFICIAL FORECAST RESULTS

(Current Dollars in Millions)

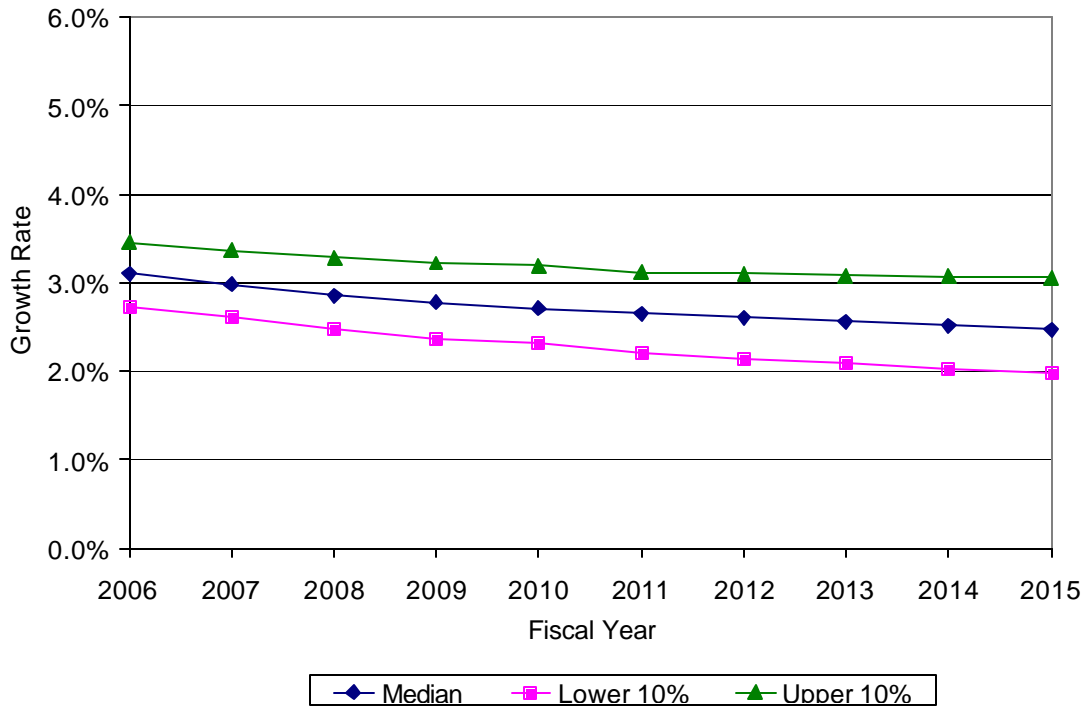
Fiscal Year	Official Forecast	Mean Forecast	80% Conf. Interval	20% Conf. Interval
2006	\$1,306.3	\$1,311.7	\$1,236.6	\$1,385.0
2007	1,375.1	1,384.1	1,279.0	1,486.3
2008	1,443.3	1,454.9	1,333.8	1,571.2
2009	1,513.3	1,524.9	1,393.0	1,652.2
2010	1,584.8	1,597.4	1,455.9	1,732.0
2011	1,660.6	1,674.5	1,525.2	1,818.5
2012	1,742.0	1,756.8	1,596.8	1,910.1
2013	1,827.9	1,844.7	1,675.4	2,007.5
2014	1,920.5	1,938.9	1,759.1	2,109.3
2015	2,021.7	2,039.6	1,848.0	2,221.8
Total	\$16,395.6	\$16,527.5	\$15,102.9	\$17,893.8



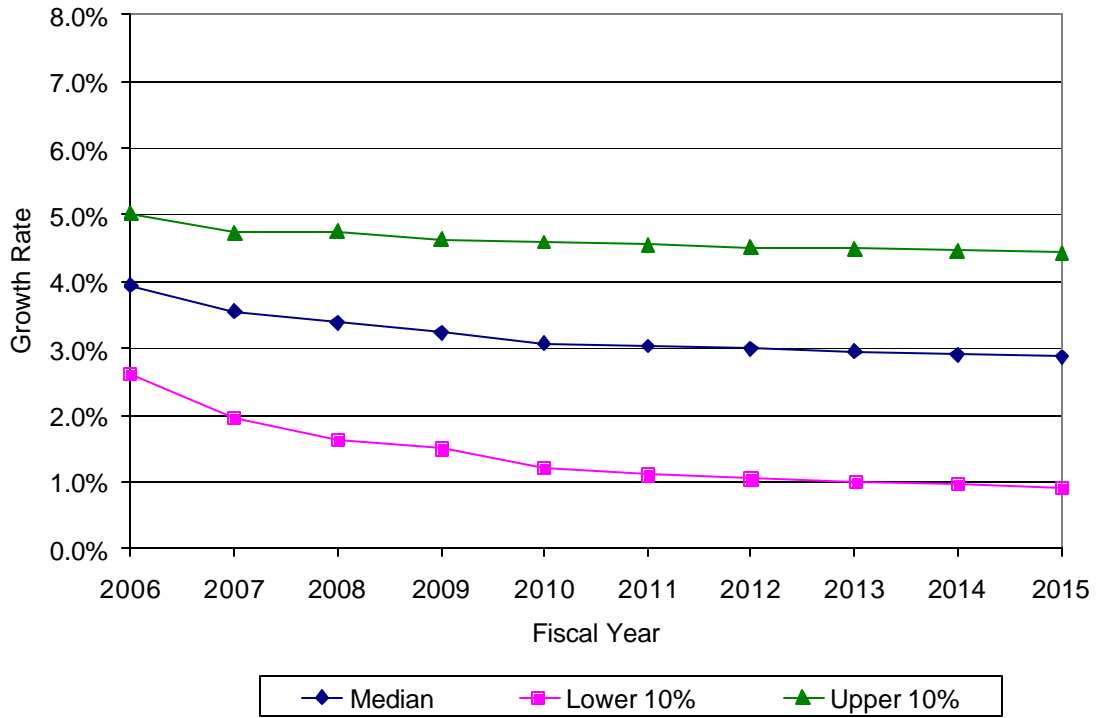
ARIZONA REAL INCOME PER CAPITA



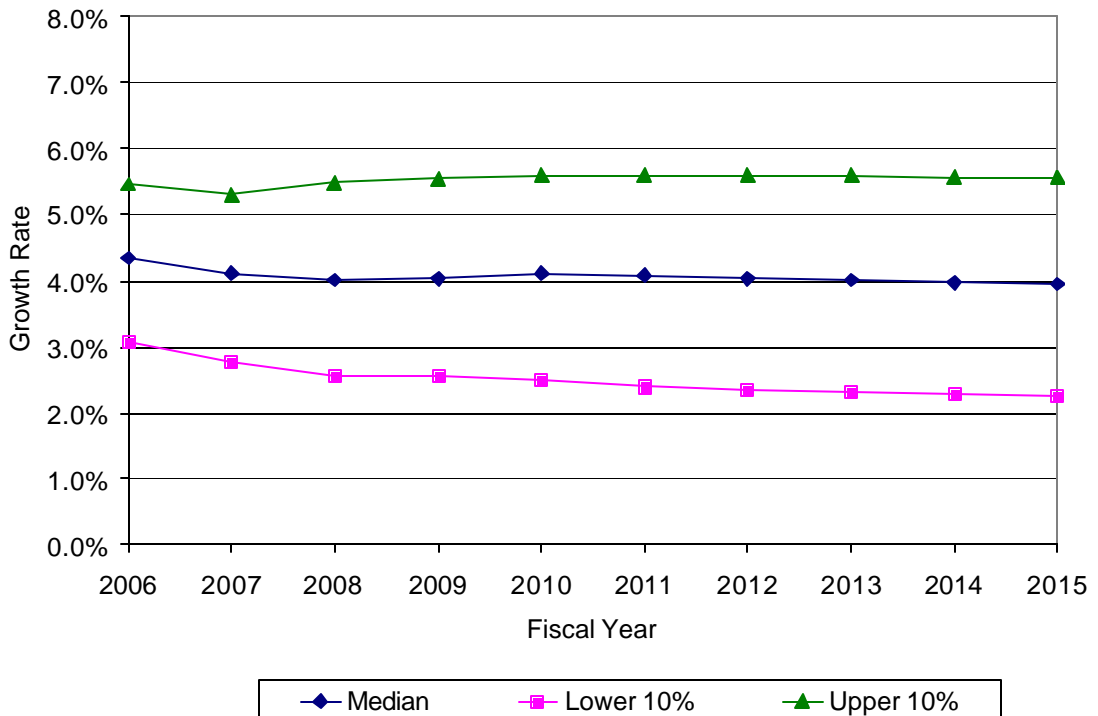
ARIZONA POPULATION GROWTH



ARIZONA WAGE & SALARY EMPLOYMENT



ARIZONA GROSS STATE PRODUCT



PANELIST MEAN DATA VALUES

	Income Growth	Population Growth	Wage & Salary Employ. Growth	Gross State Product Growth
FY 2006				
Upper 10%	2.38	3.45	5.03	5.47
Lower 10%	0.73	2.73	2.63	3.09
Median	1.62	3.10	3.93	4.34
FY 2007				
Upper 10%	2.28	3.37	4.73	5.29
Lower 10%	0.55	2.62	1.96	2.77
Median	1.42	2.98	3.55	4.12
FY 2008				
Upper 10%	2.12	3.29	4.75	5.48
Lower 10%	0.26	2.49	1.64	2.55
Median	1.23	2.86	3.38	4.02
FY 2009				
Upper 10%	2.11	3.22	4.64	5.54
Lower 10%	0.13	2.38	1.50	2.56
Median	1.09	2.78	3.24	4.03
FY 2010				
Upper 10%	2.10	3.19	4.59	5.60
Lower 10%	0.05	2.31	1.21	2.49
Median	1.07	2.71	3.08	4.12
FY 2011				
Upper 10%	2.08	3.11	4.55	5.60
Lower 10%	-0.06	2.20	1.10	2.38
Median	1.01	2.66	3.04	4.07
FY 2016				
Upper 10%	2.10	3.04	4.41	5.56
Lower 10%	-0.12	1.94	0.88	2.21
Median	0.88	2.42	2.83	3.91
FY 2021				
Upper 10%	2.18	2.99	4.40	5.59
Lower 10%	-0.24	1.70	0.72	2.11
Median	0.85	2.29	2.60	3.83
FY 2026				
Upper 10%	2.18	2.94	4.42	5.63
Lower 10%	-0.25	1.47	0.43	2.01
Median	0.83	2.15	2.49	3.76

All data in the above table are percentage growth rates.

ARIZONA REAL PER CAPITA INCOME GROWTH

	2006	2007	2008	2009	2010	2011	2016	2021	2026
Panelist 1									
Upper 10%	2.00	2.50	2.40	2.90	3.60	3.70	3.50	3.50	3.50
Lower 10%	0.20	-0.50	-0.20	0.00	0.40	0.30	0.20	0.10	0.00
Median	1.00	0.70	0.60	0.90	1.40	1.70	1.40	0.90	0.80
Panelist 2									
Upper 10%	1.80	1.80	1.80	1.50	1.25	1.00	1.00	0.90	0.80
Lower 10%	0.75	0.50	0.00	0.00	-0.50	0.00	0.25	0.00	0.00
Median	1.50	1.50	1.40	1.00	0.90	0.80	0.70	0.60	0.50
Panelist 3									
Upper 10%	1.70	1.80	2.00	2.00	2.00	2.00	2.00	2.00	2.00
Lower 10%	0.70	0.60	0.60	0.50	0.30	0.20	0.10	0.10	0.10
Median	1.30	1.00	0.90	0.80	0.80	0.80	0.50	0.50	0.50
Panelist 4									
Upper 10%	3.00	3.20	3.20	3.30	3.30	3.20	3.10	3.00	3.00
Lower 10%	0.50	0.40	0.00	-0.20	-0.20	-0.20	-0.50	-1.00	-1.00
Median	1.60	1.50	1.40	1.40	1.40	1.40	1.00	1.00	1.00
Panelist 5									
Upper 10%	2.60	2.50	2.30	2.40	2.60	2.70	2.90	3.00	3.00
Lower 10%	0.40	0.30	0.00	-0.20	-0.50	-0.60	-1.00	-1.20	-1.20
Median	1.40	1.20	1.00	1.00	1.00	0.90	0.90	0.90	0.90
Panelist 6									
Upper 10%	2.40	2.30	2.20	2.10	2.00	2.00	2.00	2.00	2.00
Lower 10%	1.20	1.10	1.00	0.90	0.90	0.80	0.70	0.00	0.00
Median	1.80	1.70	1.60	1.50	1.40	1.40	1.30	1.20	1.20
Panelist 7									
Upper 10%	2.10	0.90	0.80	0.80	0.80	0.80	0.80	0.80	0.80
Lower 10%	0.30	-0.50	-0.50	-0.50	-0.50	-1.00	-1.00	-0.05	-0.05
Median	1.30	0.10	0.00	0.00	0.00	-0.50	-0.50	0.00	0.00
Panelist 8									
Upper 10%	3.00	2.80	2.60	2.40	2.00	2.00	2.00	3.00	3.00
Lower 10%	0.70	0.90	0.60	0.20	0.00	-0.50	-0.50	-1.00	-1.00
Median	2.00	1.80	1.60	1.20	1.00	1.00	0.80	0.80	0.80
Panelist 9									
Upper 10%	2.90	2.70	2.40	2.20	2.20	2.10	2.00	2.00	2.00
Lower 10%	0.70	0.50	0.50	0.40	0.40	0.30	0.30	0.20	0.20
Median	2.00	2.00	1.80	1.30	1.20	1.10	0.90	0.80	0.80
Panelist 10									
Upper 10%	2.50	2.50	2.50	2.50	2.50	2.50	2.50	2.50	2.50
Lower 10%	1.50	1.50	1.50	1.50	1.50	1.50	1.50	1.50	1.50
Median	2.00	2.00	2.00	2.00	2.00	2.00	2.00	2.00	2.00
Panelist 11									
Upper 10%	3.00	3.00	2.00	2.00	2.00	2.00	2.00	2.00	2.00
Lower 10%	1.00	1.00	-1.00	-1.00	-1.00	-1.00	-1.00	-1.00	-1.00
Median	2.00	2.00	1.00	1.00	1.00	1.00	1.00	1.00	1.00
Panelist 12									
Upper 10%	2.00	2.00	2.00	2.00	1.80	1.60	1.50	1.50	1.50
Lower 10%	0.80	0.80	0.60	0.00	-0.20	-0.50	-0.50	-0.50	-0.50
Median	1.50	1.50	1.40	1.00	0.70	0.50	0.50	0.50	0.50

All data in the above table are percentage growth rates.

ARIZONA POPULATION GROWTH

	2006	2007	2008	2009	2010	2011	2016	2021	2026
Panelist 1									
Upper 10%	3.50	3.40	3.40	3.40	3.40	3.40	3.40	3.40	3.40
Lower 10%	2.60	2.30	2.00	1.90	1.80	1.80	1.80	1.80	1.80
Median	3.10	2.70	2.70	2.50	2.40	2.60	2.80	2.80	2.90
Panelist 2									
Upper 10%	3.30	3.40	3.30	3.30	3.20	3.20	2.90	2.80	2.80
Lower 10%	2.90	2.80	2.80	2.70	2.60	2.50	2.25	2.00	1.80
Median	3.10	3.10	3.00	3.00	2.90	2.90	2.50	2.40	2.20
Panelist 3									
Upper 10%	3.30	3.20	3.20	3.10	3.00	3.00	2.80	2.50	2.50
Lower 10%	2.80	2.70	2.50	2.30	2.20	2.00	1.70	1.40	1.00
Median	3.10	3.00	2.90	2.80	2.70	2.50	2.00	2.00	1.50
Panelist 4									
Upper 10%	3.70	3.70	3.80	3.80	3.80	3.80	4.00	4.00	4.00
Lower 10%	2.20	2.20	2.10	2.10	2.00	1.90	1.50	1.50	1.50
Median	3.00	2.90	2.80	2.80	2.80	2.80	2.20	2.20	2.20
Panelist 5									
Upper 10%	3.50	3.30	3.20	3.10	3.10	3.00	3.00	3.20	3.20
Lower 10%	2.70	2.50	2.40	2.30	2.30	2.20	2.00	1.80	1.30
Median	3.10	2.90	2.80	2.70	2.70	2.60	2.50	2.50	2.20
Panelist 6									
Upper 10%	3.60	3.50	3.40	3.40	3.40	3.40	3.30	3.30	3.20
Lower 10%	2.70	2.70	2.50	2.50	2.40	2.40	2.20	2.20	2.00
Median	3.00	3.00	2.80	2.80	2.70	2.70	2.60	2.60	2.50
Panelist 7									
Upper 10%	3.60	3.60	3.10	3.00	3.00	3.00	3.00	3.00	3.00
Lower 10%	3.00	3.00	2.70	2.60	2.50	2.40	2.00	2.00	2.00
Median	3.40	3.40	2.90	2.80	2.70	2.60	2.20	2.20	2.20
Panelist 8									
Upper 10%	3.30	3.20	3.10	3.00	3.00	2.80	2.80	2.80	2.70
Lower 10%	2.70	2.60	2.50	2.40	2.40	2.20	1.90	1.60	1.30
Median	3.00	2.90	2.80	2.80	2.70	2.70	2.40	2.20	2.00
Panelist 9									
Upper 10%	3.50	3.40	3.40	3.30	3.30	3.00	2.80	2.60	2.50
Lower 10%	2.90	2.80	2.70	2.40	2.30	2.10	2.00	1.80	1.50
Median	3.20	3.10	3.00	2.80	2.80	2.70	2.60	2.40	2.20
Panelist 10									
Upper 10%	3.30	3.20	3.20	3.10	3.00	3.00	2.90	2.70	2.50
Lower 10%	2.70	2.60	2.60	2.50	2.40	2.40	2.00	1.50	1.00
Median	3.00	2.90	2.90	2.80	2.70	2.70	2.50	2.00	2.00
Panelist 11									
Upper 10%	3.34	3.14	3.14	3.04	3.04	2.83	2.72	2.80	2.81
Lower 10%	2.66	2.46	2.46	2.36	2.36	2.17	1.88	1.20	0.99
Median	3.00	2.80	2.80	2.70	2.70	2.50	2.30	2.00	1.90
Panelist 12									
Upper 10%	3.50	3.40	3.20	3.10	3.00	2.90	2.60	2.60	2.70
Lower 10%	2.90	2.80	2.60	2.50	2.40	2.30	2.00	1.60	1.50
Median	3.20	3.10	2.90	2.80	2.70	2.60	2.40	2.20	2.00

All data in the above table are percentage growth rates.

ARIZONA WAGE & SALARY EMPLOYMENT GROWTH

	2006	2007	2008	2009	2010	2011	2016	2021	2026
Panelist 1									
Upper 10%	3.50	3.50	4.50	5.50	5.80	5.80	5.50	5.70	5.60
Lower 10%	1.90	0.80	0.80	0.80	1.00	1.00	1.00	1.00	1.00
Median	2.70	2.00	3.40	4.10	3.80	3.80	3.00	3.40	3.90
Panelist 2									
Upper 10%	6.00	5.50	5.50	5.00	4.00	4.00	3.50	3.00	3.00
Lower 10%	3.00	2.75	2.50	2.50	2.00	2.00	2.00	1.50	1.00
Median	4.50	4.20	4.00	3.60	3.50	3.40	3.00	2.50	2.00
Panelist 3									
Upper 10%	4.00	3.70	3.70	3.60	3.50	3.50	3.50	3.50	3.50
Lower 10%	3.00	1.50	1.20	1.00	-1.00	-1.00	-1.00	-1.00	-1.00
Median	3.60	3.50	3.00	2.50	2.00	2.00	2.00	1.50	1.00
Panelist 4									
Upper 10%	4.80	4.80	4.80	4.80	4.80	4.80	4.80	4.80	4.80
Lower 10%	2.50	2.50	2.40	2.20	2.20	2.20	1.40	1.20	1.00
Median	4.00	4.20	4.00	3.50	3.50	3.50	3.00	2.50	2.50
Panelist 5									
Upper 10%	5.10	4.80	4.90	4.00	4.80	4.60	4.40	5.00	5.30
Lower 10%	2.20	1.60	1.20	1.00	0.60	0.40	0.20	0.00	-0.50
Median	4.10	3.60	3.40	3.30	3.00	2.90	2.70	2.50	2.40
Panelist 6									
Upper 10%	6.00	5.90	5.80	5.70	5.30	5.20	5.00	5.00	5.00
Lower 10%	2.00	1.90	1.80	1.70	1.60	1.50	1.20	1.20	1.00
Median	3.80	3.70	3.60	3.50	3.50	3.40	3.20	3.20	3.00
Panelist 7									
Upper 10%	5.50	4.30	3.70	3.70	3.80	3.80	3.50	3.30	3.30
Lower 10%	3.20	2.30	1.40	1.40	1.50	1.50	1.50	0.70	0.70
Median	4.10	3.30	2.40	2.40	2.50	2.80	3.00	2.00	2.00
Panelist 8									
Upper 10%	6.00	5.80	5.40	5.20	5.00	5.00	5.20	5.20	5.20
Lower 10%	2.00	1.50	1.00	0.80	0.80	0.50	0.00	-0.30	-0.30
Median	4.00	3.50	3.30	3.00	2.80	2.80	2.60	2.60	2.60
Panelist 9									
Upper 10%	4.70	4.80	5.20	5.10	5.20	5.10	5.00	4.80	4.50
Lower 10%	3.70	3.20	3.00	2.60	2.20	1.60	1.20	0.80	0.80
Median	4.20	3.80	3.60	3.40	3.00	2.70	2.70	2.50	2.50
Panelist 10									
Upper 10%	5.00	4.50	4.50	4.30	4.30	4.20	4.00	4.00	4.00
Lower 10%	2.00	2.00	1.90	1.90	1.70	1.70	1.50	2.00	0.00
Median	4.00	3.90	3.80	3.80	3.70	3.70	3.20	3.00	2.50
Panelist 11									
Upper 10%	5.50	5.00	5.00	5.00	5.00	5.00	5.00	5.00	5.00
Lower 10%	2.50	1.00	1.00	1.00	1.00	1.00	1.00	1.00	1.00
Median	4.00	3.00	3.00	3.00	3.00	3.00	3.00	3.00	3.00
Panelist 12									
Upper 10%	4.30	4.10	4.00	3.80	3.60	3.60	3.50	3.50	3.50
Lower 10%	3.50	2.50	1.50	1.00	0.90	0.80	0.50	0.50	0.50
Median	4.10	3.90	3.00	2.80	2.60	2.50	2.50	2.50	2.50

All data in the above table are percentage growth rates.

ARIZONA GROSS STATE PRODUCT GROWTH

	2006	2007	2008	2009	2010	2011	2016	2021	2026
Panelist 1									
Upper 10%	4.50	4.00	5.50	6.50	6.50	6.50	6.50	6.50	6.50
Lower 10%	2.00	1.70	2.20	2.80	2.60	2.00	1.70	2.00	2.00
Median	3.50	3.00	3.90	4.40	4.80	4.00	3.50	3.60	3.80
Panelist 2									
Upper 10%	6.00	6.00	6.00	6.00	5.75	5.00	5.00	5.00	5.00
Lower 10%	4.50	3.00	2.75	2.75	2.50	2.00	2.00	1.50	1.50
Median	5.00	4.50	4.00	4.00	4.00	3.75	3.75	3.50	3.00
Panelist 3									
Upper 10%	5.30	5.00	5.50	5.00	5.00	5.00	5.00	5.50	5.50
Lower 10%	3.00	2.50	2.50	2.40	2.00	1.50	1.50	1.50	1.50
Median	4.00	4.00	4.00	4.00	4.00	4.00	3.70	3.50	3.00
Panelist 4									
Upper 10%	6.50	6.00	6.00	6.00	6.00	6.00	6.00	6.00	6.00
Lower 10%	2.00	2.00	2.00	2.00	2.00	2.00	2.00	2.00	2.00
Median	4.00	4.00	4.00	4.00	4.00	4.00	4.00	4.00	4.00
Panelist 5									
Upper 10%	5.30	5.50	5.80	6.10	6.20	6.30	6.50	6.60	7.00
Lower 10%	2.90	2.80	2.70	2.30	2.00	1.80	1.50	1.00	0.50
Median	4.20	4.30	4.40	4.40	4.40	4.40	4.30	4.30	4.30
Panelist 6									
Upper 10%	5.70	5.80	5.80	5.90	5.90	6.00	6.00	6.00	6.00
Lower 10%	3.00	3.00	3.00	3.00	3.00	2.80	2.80	2.50	2.30
Median	4.20	4.30	4.30	4.40	4.40	4.50	4.30	4.30	4.20
Panelist 7									
Upper 10%	4.70	4.00	3.00	2.70	3.30	4.00	3.50	3.30	3.30
Lower 10%	2.50	2.50	1.00	0.70	1.30	2.00	1.50	1.30	1.30
Median	3.70	3.00	2.00	1.70	2.30	3.00	2.50	2.30	2.30
Panelist 8									
Upper 10%	5.50	6.20	6.40	6.50	6.50	6.40	6.20	6.20	6.80
Lower 10%	2.50	2.90	3.00	3.20	3.20	3.40	3.00	3.00	2.50
Median	4.50	4.80	4.50	4.50	4.50	4.50	4.50	4.50	4.50
Panelist 9									
Upper 10%	5.60	5.50	5.70	5.80	6.00	6.00	6.00	6.00	5.50
Lower 10%	4.00	3.80	3.50	3.50	3.00	3.00	2.50	2.50	2.50
Median	5.20	4.80	4.80	4.50	4.50	4.50	4.20	4.00	4.00
Panelist 10									
Upper 10%	5.00	5.00	5.00	5.00	5.00	5.00	5.00	5.00	5.00
Lower 10%	2.50	2.50	2.50	2.60	2.80	2.60	2.50	2.50	2.50
Median	4.00	4.20	4.30	4.50	4.50	4.20	4.20	4.00	4.00
Panelist 11									
Upper 10%	6.00	5.00	5.00	5.00	5.00	5.00	5.00	5.00	5.00
Lower 10%	4.00	3.00	3.00	3.00	3.00	3.00	3.00	3.00	3.00
Median	5.00	4.00	4.00	4.00	4.00	4.00	4.00	4.00	4.00
Panelist 12									
Upper 10%	5.50	5.50	6.00	6.00	6.00	6.00	6.00	6.00	6.00
Lower 10%	4.00	3.50	2.50	2.50	2.50	2.50	2.50	2.50	2.50
Median	4.80	4.50	4.00	4.00	4.00	4.00	4.00	4.00	4.00

All data in the above table are percentage growth rates.

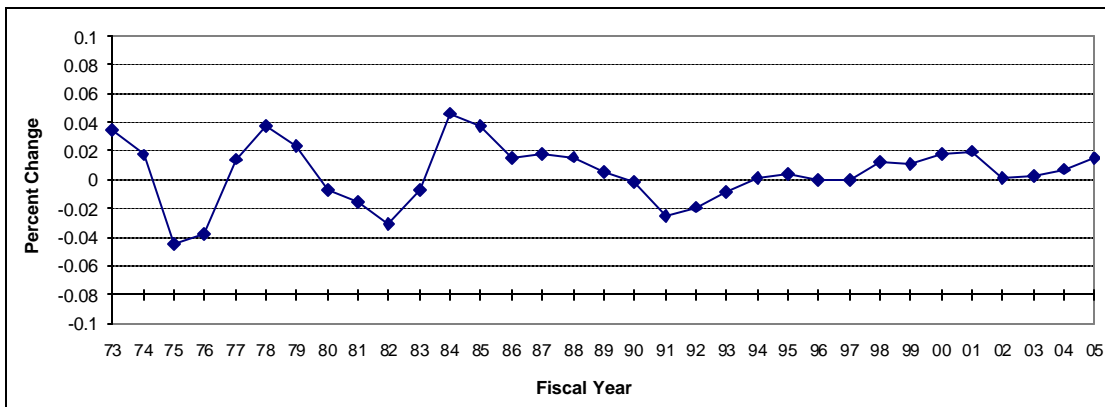
HISTORICAL DATA
ARIZONA REAL PER CAPITA INCOME GROWTH
Using Phoenix CPI to Measure Inflation
(Annual Percent Change)

HISTORICAL DATA BY FISCAL YEAR (July 1 through June 30)

1960	1970	1980	-0.7%	1990	-0.2%	2000	1.8%
1961	1971	1981	-1.6%	1991	-2.5%	2001	2.0%
1962	1972	1982	-3.1%	1992	-1.9%	2002	0.1%
1963	1973	1983	-0.7%	1993	-0.9%	2003	0.2%
1964	1974	1984	4.6%	1994	0.1%	2004	0.7%
1965	1975	1985	3.8%	1995	0.4%	2005*	1.5%
1966	1976	1986	1.5%	1996	0.0%	2006	
1967	1977	1987	1.7%	1997	-0.1%	2007	
1968	1978	1988	1.6%	1998	1.3%	2008	
1969	1979	1989	0.5%	1999	1.1%	2009	

* Estimate

HISTORICAL DATA - GRAPHED



HISTORICAL DATA - ANALYSIS

Period	Historical		Mean	Std. Dev.	80% Range	
	Min.	Max.			Lower	Upper
5 Years	0.1%	2.0%	0.9%	0.8%	0.2%	1.8%
10 Years	-0.1%	2.0%	0.9%	0.8%	0.0%	1.8%
Full Period	-4.5%	4.6%	0.5%	2.1%	-2.4%	3.2%

**HISTORICAL DATA
ARIZONA POPULATION GROWTH
(Annual Percent Change)**

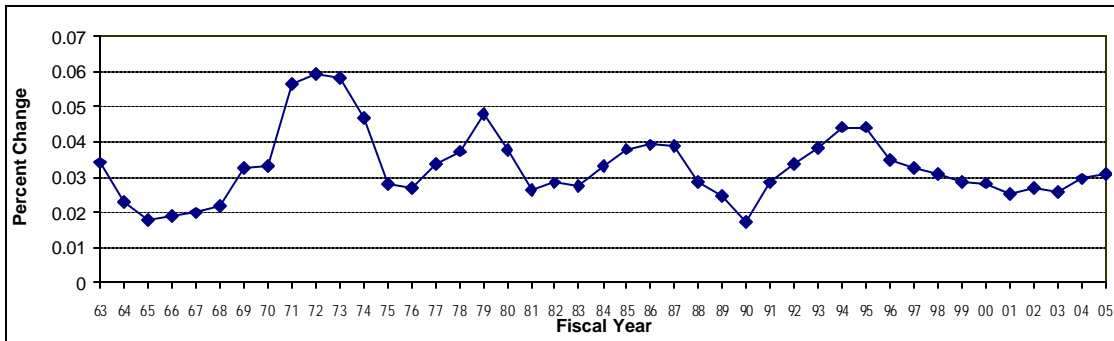
HISTORICAL DATA BY FISCAL YEAR (July 1 through June 30)

1960		1970	3.3%	1980	3.8%	1990	1.7%	2000	2.8%
1961		1971	5.6%	1981	2.6%	1991	2.8%	2001	2.5%
1962	4.5%	1972	5.9%	1982	2.8%	1992	3.4%	2002	2.7%
1963	3.4%	1973	5.8%	1983	2.7%	1993	3.8%	2003	2.6%
1964	2.3%	1974	4.7%	1984	3.3%	1994	4.4%	2004	3.0%
1965	1.8%	1975	2.8%	1985	3.8%	1995	4.4%	2005 *	3.1%
1966	1.9%	1976	2.7%	1986	3.9%	1996	3.5%	2006	
1967	2.0%	1977	3.4%	1987	3.9%	1997	3.3%	2007	
1968	2.2%	1978	3.7%	1988	2.9%	1998	3.1%	2008	
1969	3.3%	1979	4.8%	1989	2.5%	1999	2.9%	2009	

BEA FY 1962-2004. FY 2005 and FY 2006 based on Arizona Blue Chip estimate, June 2005.

FY 2007-2026 based on staff estimate.

HISTORICAL DATA - GRAPHED



HISTORICAL DATA - ANALYSIS

Period	Historical		Mean	Std. Dev.	80% Range	
	Min.	Max.			Lower	Upper
5 Years	2.5%	3.1%	2.8%	0.2%	2.6%	3.0%
10 Years	2.5%	3.5%	2.9%	0.3%	2.6%	3.3%
Full Period	1.7%	5.9%	3.3%	1.0%	2.2%	4.6%

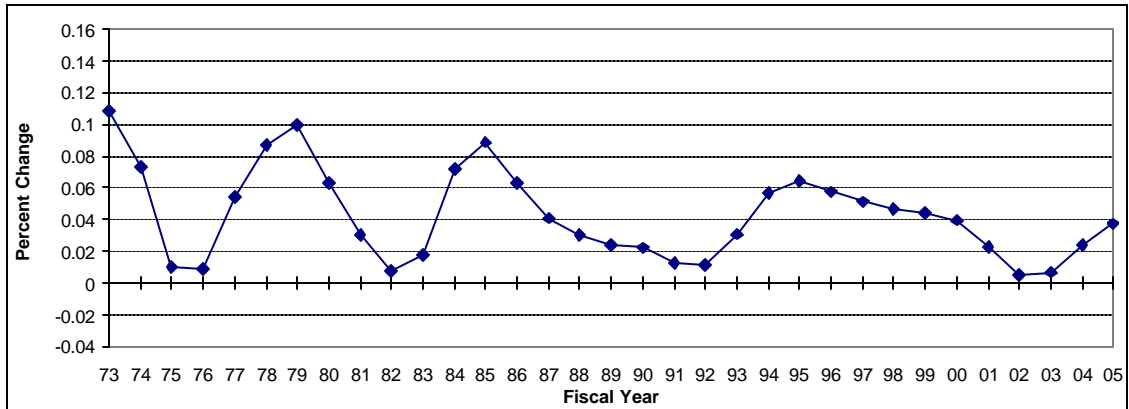
**HISTORICAL DATA
ARIZONA WAGE & SALARY EMPLOYMENT GROWTH
(Annual Percent Change)**

HISTORICAL DATA BY FISCAL YEAR (July 1 through June 30)

1960	1970	1980	6.3%	1990	2.2%	2000	4.0%
1961	1971	1981	3.0%	1991	1.2%	2001	2.3%
1962	1972	1982	0.8%	1992	1.1%	2002	0.5%
1963	1973	1983	1.8%	1993	3.1%	2003	0.7%
1964	1974	1984	7.2%	1994	5.6%	2004	2.4%
1965	1975	1985	8.9%	1995	6.4%	2005 *	3.7%
1966	1976	1986	6.3%	1996	5.7%	2006	
1967	1977	1987	4.1%	1997	5.1%	2007	
1968	1978	1988	3.0%	1998	4.7%	2008	
1969	1979	1989	2.4%	1999	4.4%	2009	

* Estimate

HISTORICAL DATA - GRAPHED



HISTORICAL DATA - ANALYSIS

Period	Historical		Mean	Std. Dev.	80% Range	
	Min.	Max.			Lower	Upper
5 Years	0.5%	3.7%	1.9%	1.3%	0.6%	3.2%
10 Years	0.5%	5.7%	3.4%	1.8%	0.7%	5.2%
Full Period	0.5%	10.8%	4.3%	2.9%	0.9%	8.4%

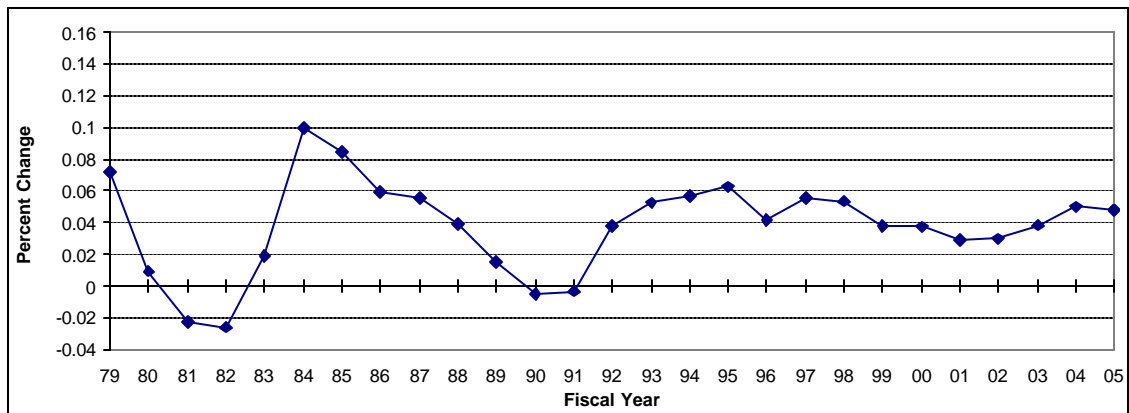
HISTORICAL DATA
ARIZONA REAL GROSS STATE PRODUCT GROWTH
 Using Phoenix CPI to Measure Inflation
 (Annual Percent Change)

HISTORICAL DATA BY FISCAL YEAR (July 1 through June 30)

1960	1970	1980	0.9%	1990	-0.5%	2000	3.7%	
1961	1971	1981	-2.2%	1991	-0.3%	2001	2.9%	
1962	1972	1982	-2.6%	1992	3.8%	2002	3.0%	
1963	1973	1983	1.9%	1993	5.2%	2003	3.8%	
1964	1974	1984	10.0%	1994	5.7%	2004	5.0%	
1965	1975	1985	8.4%	1995	6.2%	2005 *	4.8%	
1966	1976	1986	5.9%	1996	4.2%	2006		
1967	1977	1987	5.6%	1997	5.6%	2007		
1968	1978	1988	3.9%	1998	5.3%	2008		
1969	1979	7.2%	1989	1.5%	1999	3.8%	2009	

* Estimate

HISTORICAL DATA - GRAPHED



HISTORICAL DATA - ANALYSIS

Period	Historical		Mean	Std. Dev.	80% Range	
	Min.	Max.			Lower	Upper
5 Years	2.9%	5.0%	3.9%	1.0%	2.9%	4.9%
10 Years	2.9%	5.6%	4.2%	0.9%	3.0%	5.4%
Full Period	-2.6%	10.0%	3.8%	3.0%	-0.4%	6.6%