

ARIZONA

MOTOR VEHICLE CRASH FACTS

2009



2009 Motor Vehicle Crash Facts for the State of Arizona

*Prepared by:
The Arizona Department of Transportation
Intermodal Transportation Division*

Publication Date: September 29, 2010



This publication is an annual statistical review of the motor vehicle crashes in the State of Arizona for the calendar year 2009. The results are compiled from Arizona Traffic Accident Reports submitted to the Arizona Department of Transportation by state, county, city, tribal, and other law enforcement agencies. Specific inquiries regarding the data in this report should be directed to:

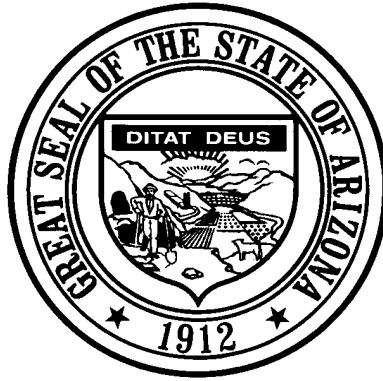
**The Arizona Department of Transportation
Intermodal Transportation Division
Traffic Records Section
206 S. 17th Ave. MD 064R
Phoenix, AZ 85007-3213**

E-mail: azcrashfacts@azdot.gov

Phone: (602) 712-6259

In order to provide the most current information, preliminary data is utilized when necessary. For this reason, previous or future reports may differ slightly and we encourage you to refer to the latest issue of Motor Vehicle Crash Facts.

This issue as well as previous issues of this publication may be viewed and downloaded from ADOT's Web Site at:
<http://www.azdot.gov/mvd/Statistics/crash/index.asp>



Janice K. Brewer
Governor

Arizona Department of Transportation

John S. Halikowski
Director

State Transportation Board

Robert Montoya – District 5
Chairman

William (Bill) J. Feldmeier – District 6
Vice Chairman

Members

Felipe Andres Zubia – District 1

Victor Flores – District 1

Stephen W. Christy – District 2

Barbara (Bobbie) Ann Lundstrom – District 3

Kelly O. Anderson – District 4

OVERVIEW

Section 1: – Highlights and Historical Trends1

Section 2: – Geographic Location.....9

Section 3: – Crash Descriptions17

Section 4: – Safety Devices23

Section 5: – Motor Vehicle and Driver Descriptions26

Section 6: – Alcohol Related Crashes.....32

Section 7: – Pedestrian and Pedalcyclist Crashes41

Section 8: – Motorcycle (MC) Crashes46

Acknowledgements55

2009 Arizona Crash Facts Summary

Table of Contents

Section 1: Highlights and Historical Trends	1
Arizona Crash Facts Summary and Comparison.....	2
Arizona at a Glance – 2009	2
Licensed Drivers, Motor Vehicle Registration and Crash History in Arizona	3
Historical Trends – Arizona and the United States	3
Statewide Economic Loss Due to Motor Vehicle Crashes	4
Average Economic Cost per Incident.....	4
Traffic Crashes in Arizona by Year.....	5
Victims of Motor Vehicle Crashes.....	6
Arizona’s 2009 Estimated Population	6
Victims of Motor Vehicle Crashes (Arizona Residents Only)	6
Vehicle Miles Traveled	7
Arizona vs. U.S. Fatality Rate	7
Traffic Fatalities by Geographic Region	7
Traffic Injuries by Geographic Region.....	7
Holiday Crash Statistics	8
Section 2: Geographic Location	9
Crash Severity by First Harmful Event Statewide.....	10
Crashes by County	10
Crash Severity by First Harmful Event in Urban Areas	11
Crash Severity by First Harmful Event in Rural Areas	11
Analysis by Jurisdiction	12
Total Fatalities by County for 2008 and 2009.....	15
Urban and Rural Crashes by Day of Week.....	16
Urban and Rural Fatal Crashes by Day of Week.....	16
All Urban and Rural Crashes vs. Urban and Rural Fatal Crashes by Month.....	16
Section 3: Crash Descriptions	17
Manner of Collision in Multi-Vehicle Crashes	18
Lighting Conditions.....	18
Weather Conditions.....	18
Road Surface Conditions.....	19
Roadway Grade.....	19
Roadway Alignment.....	19
All Crashes vs. Fatal Crashes by Time of Day - Weekdays	20
All Crashes vs. Fatal Crashes by Time of Day - Weekends	20
Crashes by Day of Week	21
Fatal Crashes by Day of Week	21
All Crashes vs. Fatal Crashes by Month	21
Crashes by Hour and Day of Week	22
Section 4: Safety Devices	23
Child Safety Device Usage (less than five years old).....	24
Driver Safety Device Usage	24
Passenger Safety Device Usage.....	24
Driver Safety Device Usage by Gender	25
Driver Safety Device Usage by Age	25
Section 5: Motor Vehicle and Driver Descriptions	26
Arizona Motor Vehicle Registrations.....	27
Motor Vehicle Crash Involvement by Vehicle Type.....	27
Hit and Run Drivers Involved in Crashes.....	28
Gender of Drivers Involved in Crashes.....	28

2009 Arizona Crash Facts Summary

License Status of Drivers Involved in Crashes	28
Passengers Killed and Injured by Age and Gender	28
Drivers and Passengers Killed and Injured by Vehicle Type	29
Drivers Killed and Injured by Age and Gender	29
Licensed Drivers in Arizona by Age	30
Driver Involvement by Age	30
Driver Errors	31
Driver Physical Condition	31
Section 6: Alcohol Related Crashes	32
Economic Loss Due to Alcohol Related Crashes in Arizona for 2009	33
Alcohol Related Crash History	33
Manner of Collision in Alcohol Related Crashes	33
Alcohol Related Crashes by First Harmful Event	34
Alcohol Related Crashes by Vehicle Type	34
Lighting Conditions in Alcohol Related Crashes	35
Road Surface Conditions in Alcohol Related Crashes	35
Gender of Drivers Involved in Alcohol Related Crashes	35
Driver Involvement by Age in Alcohol Related Crashes	36
When Alcohol Related Crashes Occurred in 2009	36
Safety Device Usage for Drinking Drivers	36
Persons Killed and Injured in Alcohol Related Crashes	37
Alcohol Related Crashes by County	37
All Alcohol Related Crashes vs. Fatal Alcohol Related Crashes by Day of Week	38
All Alcohol Related Crashes vs. Fatal Alcohol Related Crashes by Month	38
All Alcohol Related Crashes vs. Fatal Alcohol Related Crashes - Weekdays	39
All Alcohol Related Crashes vs. Fatal Alcohol Related Crashes - Weekends	39
Alcohol Related Crashes by Hour and Day of Week	40
Section 7: Pedestrian and Pedalcyclist Crashes	41
Pedestrians Killed and Injured By Age and Gender	42
Pedestrian Crashes by Geographic Location	42
Pedestrian Crash History	42
Pedestrians Killed by Age and Action	43
Pedestrians Injured by Age and Action	43
Pedestrian Physical Condition in Motor Vehicle Crashes	43
Lighting Conditions in Pedestrian Crashes	44
Weather Conditions in Pedestrian Crashes	44
Pedalcyclists Killed and Injured by Age and Gender	44
Pedalcycle Crashes by Geographic Location	45
Pedalcycle Crash History	45
Lighting Conditions in Pedalcyclist Crashes	45
Weather Conditions in Pedalcyclist Crashes	45
Section 8: Motorcycle (MC) Crashes	46
MC Fatalities by Year	47
MC Registrations in Arizona	47
Fatality Rate per Registered MC	47
Percent of MC Crashes to All Crashes	47
MC Crashes by First Harmful Event	48
Lighting Conditions in MC Crashes	48
Road Surface Conditions in MC Crashes	48
MC Crashes by Geographic Location	49
Operator Involvement by Age in MC Crashes	49
MC Operator Physical Condition	49
MC Operators Involved in Fatal Crashes by License Status	50
MC Operator's Helmet Use	50

2009 Arizona Crash Facts Summary

MC Passenger's Helmet Use	50
MC Operators and Passengers Killed and Injured.....	51
MC Operator Errors	51
All MC Crashes vs. Fatal MC Crashes by Time of Day - Weekdays.....	52
All MC Crashes vs. Fatal MC Crashes by Time of Day - Weekends.....	52
All MC Crashes vs. Fatal MC Crashes by Day of Week.....	53
Alcohol Related MC Crashes vs. Fatal Alcohol Related MC Crashes by Day of Week.....	53
MC Crashes by Hour and Day of Week.....	54
Acknowledgements	55

2009 Arizona Crash Facts Summary

BREAKDOWN OF ALL CRASHES IN ARIZONA

TOTAL	106,767
FATAL	709
INJURY	33,380
PROPERTY DAMAGE ONLY	72,678
URBAN	84,941
RURAL	21,826
ALCOHOL RELATED	5,854
PEDESTRIAN	1,523
PEDALCYCLE	1,995
MOTORCYCLE	2,958
SINGLE VEHICLE	19,116
MULTI-VEHICLE	87,651

BREAKDOWN OF FATAL CRASHES IN ARIZONA

TOTAL	709
ALCOHOL RELATED	244
URBAN	299
RURAL	410
SINGLE VEHICLE	320
MULTI-VEHICLE	389
ALCOHOL RELATED SINGLE VEHICLE	116
ALCOHOL RELATED MULTI-VEHICLE	128

BREAKDOWN OF PERSONS KILLED AND INJURED

TYPE	KILLED	INJURED
IN ALL CRASHES	806	50,610
IN ALCOHOL RELATED CRASHES	261	4,142
IN URBAN CRASHES	325	39,656
IN RURAL CRASHES	481	10,954
USING SAFETY DEVICE	221	39,995
NOT USING SAFETY DEVICE	321	4,152
DRIVERS AGE 24 OR YOUNGER	80	8,098
DRINKING DRIVERS AGE 24 OR YOUNGER	35	543

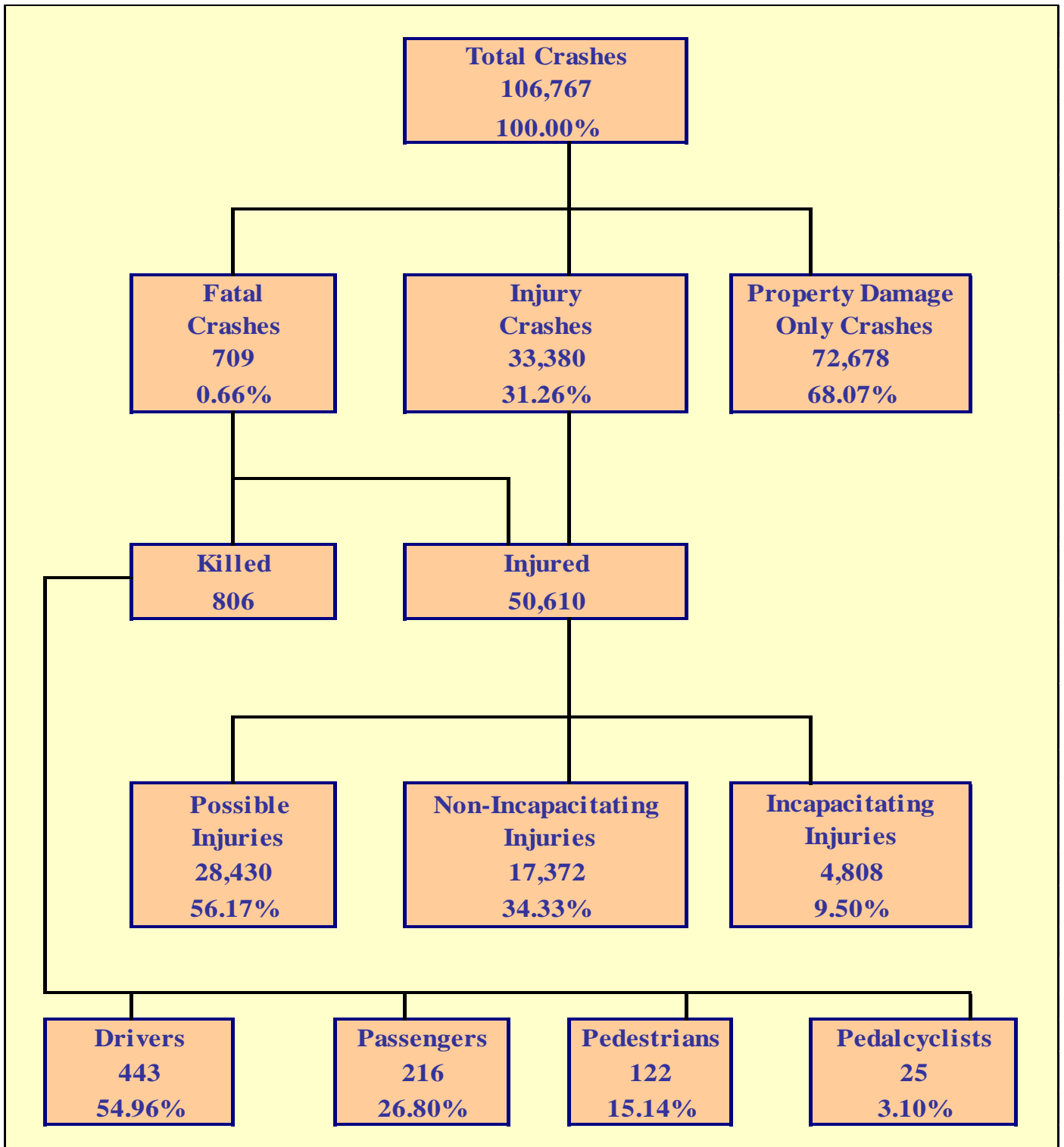
BREAKDOWN OF CRASHES BY TIME

PEAK MONTH FOR ALL CRASHES	DECEMBER
PEAK DAY FOR ALL CRASHES	FRIDAY
PEAK HOUR FOR ALL CRASHES	4 PM - 5 PM
PEAK MONTH FOR FATAL CRASHES	APRIL
PEAK DAY FOR FATAL CRASHES	SATURDAY
PEAK HOUR FOR FATAL CRASHES	6 PM - 7 PM
PEAK HOUR FOR ALCOHOL RELATED CRASHES	2 AM - 3 AM
PEAK HOUR FOR FATAL ALCOHOL RELATED CRASHES	9 PM - 10 PM and 3 AM - 4 AM
PEAK HOUR FOR MOTORCYCLE CRASHES	5 PM - 6 PM
PEAK HOUR FOR FATAL MOTORCYCLE CRASHES	4 PM - 5 PM and 7 PM - 8 PM

OTHER FACTS

MOST COMMON MANNER OF COLLISION	Rear-End
MOST COMMON DRIVER VIOLATION	Speed too fast for conditions

THIS PAGE LEFT BLANK FOR PRINTING PURPOSES



Section 1: – Highlights and Historical Trends

Table 1 - 1

Arizona Crash Facts Summary and Comparison

Category	2008	2009	Percent Change
Total Crashes	120,554	106,767	-11.44%
Total Fatalities	938	806	-14.07%
Total Injuries	56,537	50,610	-10.48%
Alcohol Related Fatalities	355	261	-26.48%
Alcohol Related Injuries	4,834	4,142	-14.32%
Urban Fatalities	414	325	-21.50%
Urban Injuries	44,396	39,656	-10.68%
Rural Fatalities	524	481	-8.21%
Rural Injuries	12,141	10,954	-9.78%
MC Operator and Passenger Fatalities	141	122	-13.48%
MC Operator and Passenger Injuries	3,048	2,477	-18.73%
Pedestrians Fatalities	125	122	-2.40%
Pedestrians Injuries	1,432	1,304	-8.94%
Pedalcyclist Fatalities	19	25	31.58%
Pedalcyclist Injuries	1,697	1,643	-3.18%
Millions of vehicle miles traveled (VMT)*	61,627	62,555	1.51%
Fatalities per 100 million VMT	1.52	1.29	-15.35%
Injuries per 100 million VMT	91.74	80.90	-11.81%

*The VMT figure for 2009 is preliminary. The actual figure was not available at the time of publication.

Arizona at a Glance – 2009

- Approximately **2.21** persons were killed each day.
- One person was killed every **10.88** hours.
- There were **138.56** persons injured every day.
- One person was injured every **10.39** minutes.
- Alcohol Related crashes accounted for **5.48%** of all crashes and **34.41%** of all fatal crashes.
- Of all alcohol related crashes, **75.78%** occurred in Urban areas and **24.22%** occurred in Rural areas, while **44.26%** of all alcohol related fatal crashes occurred in Urban areas and **55.74%** occurred in Rural areas.
- Single vehicle crashes accounted for **17.90%** of all crashes and **45.13%** of all fatal crashes.
- Of all Pedestrian crashes, **7.94%** were fatal while **1.25%** of Pedalcycle crashes were fatal.
- Crashes which occurred during daylight hours (6:00 a.m. to 6:00 p.m.) accounted for **73.2%** of all crashes.
- Motor vehicle crashes resulted in **\$2.757** billion in economic losses to Arizona.
- Children age 14 and younger accounted for **43** fatalities and **4,093** injuries in motor vehicle crashes.

The Nation In 2009

The population of the United States was estimated at **307,006,550**.

Estimated vehicle miles traveled totaled **2.979 billion** miles.

An estimated **33,808** persons were killed in motor vehicle crashes in the United States.

Table 1 - 2

**Licensed Drivers, Motor Vehicle Registration
and Crash History in Arizona**

Calendar Year	Total Crashes	Fatal Crashes	Injury Crashes	Property Damage Only Crashes	Total Persons Killed	Total Persons Injured	Total Licensed Drivers	Total Registered Vehicles
2005	140,574	1,049	45,826	93,699	1,193	71,083	3,963,005	4,556,448
2006	143,503	1,126	45,395	96,982	1,301	70,013	4,091,789	4,748,957
2007	141,192	952	43,559	96,681	1,071	66,060	4,212,393	4,848,162
2008	120,554	843	37,514	82,197	938	56,537	4,360,711	4,842,188
2009	106,767	709	33,380	72,678	806	50,610	4,434,719	4,787,350

Table 1 - 3

Historical Trends – Arizona and the United States

Calendar Year	U.S. Fatality Rate*	Arizona Fatality Rate	Arizona Traffic Fatalities	Estimated Motor Vehicle Miles Traveled	Arizona Fatal Crash Rate
2005	1.46	2.03	1,193	58,796	1.78
2006	1.42	2.08	1,301	62,485	1.80
2007	1.36	1.70	1,071	62,961	1.51
2008	1.26	1.52	938	61,627	1.37
2009	1.13	1.29	806	62,555	1.13

Vehicle miles traveled are shown in million miles and rates per 100 million miles

*Source for U.S. Fatality Rate: www.nhtsa.gov

Statewide Economic Loss Due to Motor Vehicle Crashes

Fatalities	\$1,068,756,000
Incapacitating Injuries	\$329,559,552
Non-Incapacitating Injuries	\$386,283,792
Possible Injuries	\$356,682,780
Property Damage Only	\$615,291,948
TOTAL	\$2,756,574,072

Table 1 - 4

Estimated Economic Loss by County

County	Cost of Traffic Crashes			
	Fatalities	Injuries	PDO	Total
Apache	\$ 41,106,000	\$ 9,193,158	\$ 3,039,294	\$ 53,338,452
Cochise	\$ 51,714,000	\$ 17,640,696	\$ 11,513,760	\$ 80,868,456
Coconino	\$ 54,366,000	\$ 31,544,928	\$ 23,924,916	\$ 109,835,844
Gila	\$ 22,542,000	\$ 12,826,500	\$ 5,621,424	\$ 40,989,924
Graham	\$ 13,260,000	\$ 3,814,800	\$ 1,566,210	\$ 18,641,010
Greenlee	\$ 2,652,000	\$ 859,758	\$ 338,640	\$ 3,850,398
La Paz	\$ 23,868,000	\$ 6,049,008	\$ 2,328,150	\$ 32,245,158
Maricopa	\$ 405,756,000	\$ 649,370,046	\$ 397,588,758	\$ 1,452,714,804
Mohave	\$ 55,692,000	\$ 39,417,696	\$ 16,356,312	\$ 111,466,008
Navajo	\$ 59,670,000	\$ 14,214,618	\$ 7,136,838	\$ 81,021,456
Pima	\$ 125,970,000	\$ 166,580,994	\$ 87,149,004	\$ 379,699,998
Pinal	\$ 96,798,000	\$ 44,492,808	\$ 20,318,400	\$ 161,609,208
Santa Cruz	\$ 21,216,000	\$ 5,840,724	\$ 3,691,176	\$ 30,747,900
Yavapai	\$ 60,996,000	\$ 37,768,152	\$ 19,200,888	\$ 117,965,040
Yuma	\$ 33,150,000	\$ 32,912,238	\$ 15,518,178	\$ 81,580,416
TOTALS	\$ 1,068,756,000	\$ 1,072,526,124	\$ 615,291,948	\$ 2,756,574,072

NOTE: Cost estimates are based on a 2% increase of the 2008 National Safety Council estimates of the average cost of motor vehicle crashes, deaths, and injuries. These costs are an estimate of wage and productivity losses, medical expenses, administrative expenses, motor vehicle damage, and employer costs. A description of the National Safety Council's current cost estimating procedures may be found in the Technical Appendix of *Injury Facts*[®]. Effective with the 1993 bulletin, the Council extensively revised its cost estimating procedures.

Table 1 - 5

Average Economic Cost per Incident

1.	Fatality	\$1,326,000
2.	Incapacitating Injury	\$68,544
3.	Non-Incapacitating Injury	\$22,236
4.	Possible Injury	\$12,546
5.	Property Damage Only	\$8,466

Traffic Crashes in Arizona by Year

Chart 1 - 1
Total Crashes

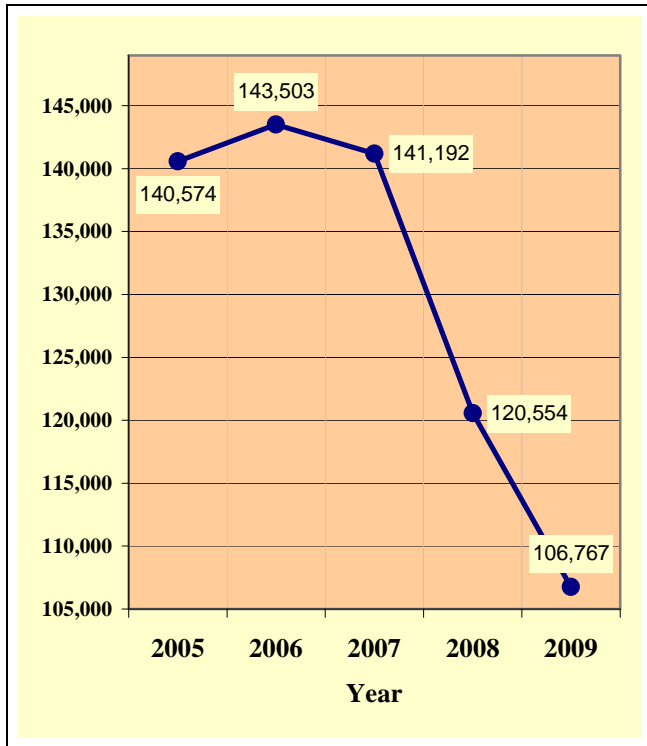


Chart 1 - 2
Fatal Crashes

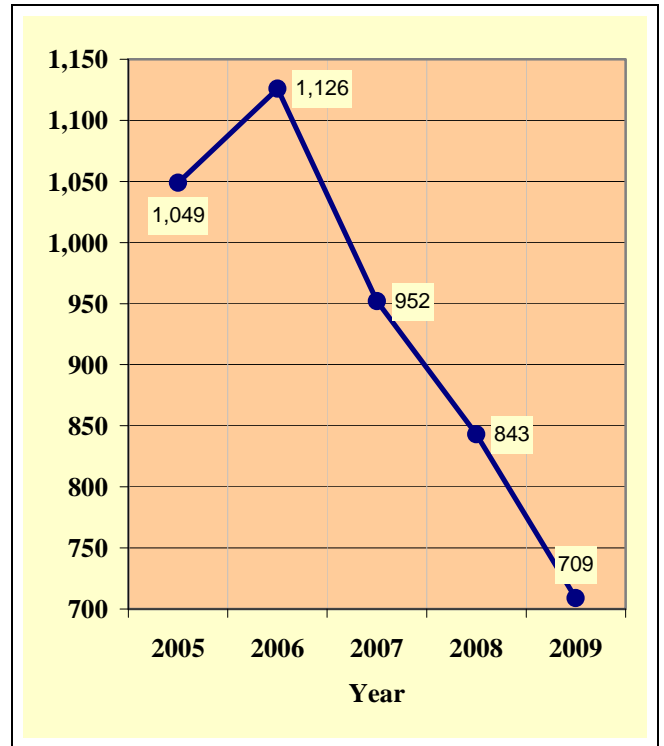


Chart 1 - 3
Injury Crashes

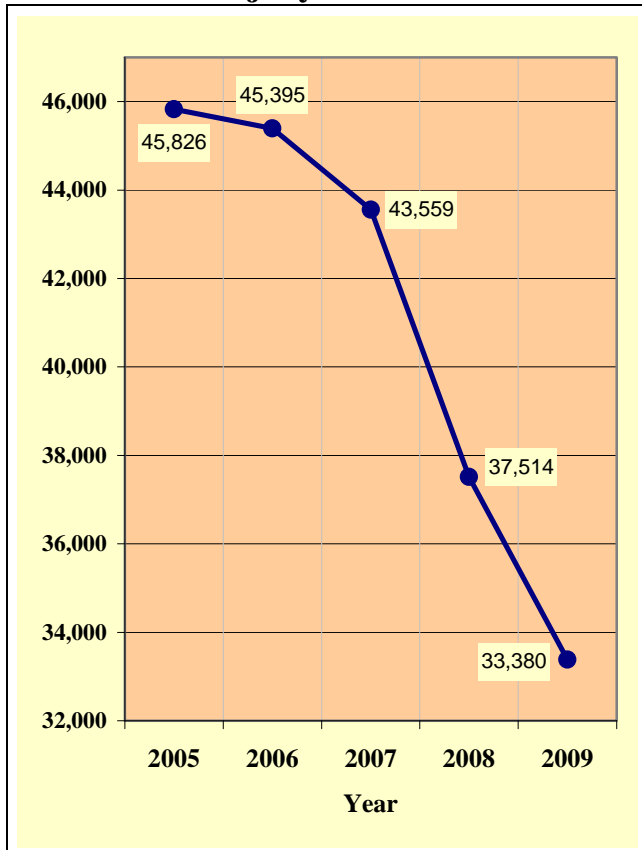
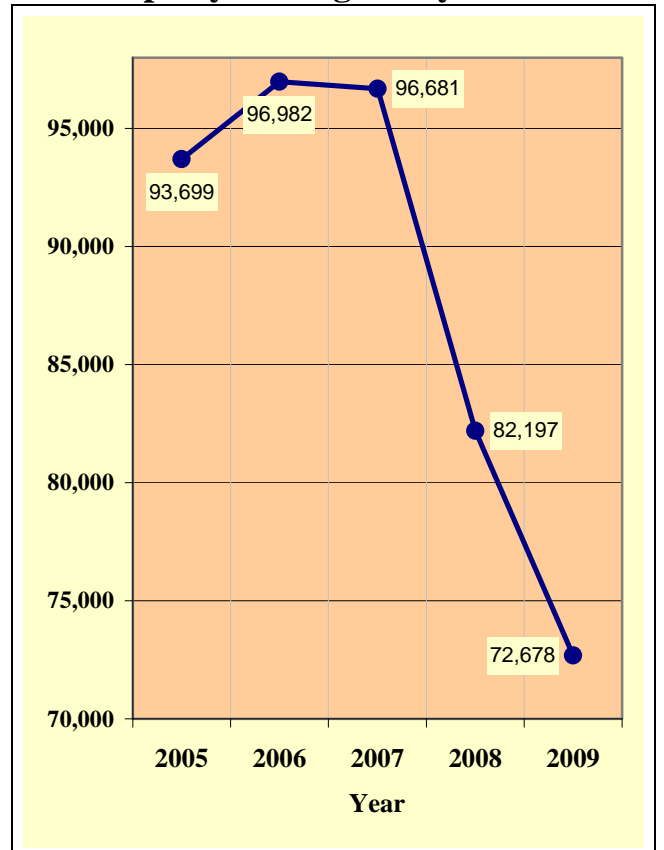


Chart 1 - 4
Property Damage Only Crashes



Section 1: – Highlights and Historical Trends

Table 1 - 6
Victims of Motor Vehicle Crashes

Age of Victim	Persons Killed				Persons Injured			
	Total	Male	Female	Gender Unknown	Total	Male	Female	Gender Unknown
0-4	18	9	9	0	1,129	564	565	0
5-9	11	10	1	0	1,289	666	623	0
10-14	14	9	5	0	1,675	846	829	0
15-19	64	43	21	0	6,045	2,813	3,232	0
20-24	83	63	20	0	6,769	3,262	3,507	0
25-34	141	107	34	0	9,371	4,448	4,923	0
35-44	122	88	34	0	7,495	3,666	3,829	0
45-54	115	83	32	0	7,099	3,341	3,758	0
55-64	103	77	26	0	4,779	2,227	2,552	0
65-74	61	41	20	0	2,542	1,187	1,355	0
75 & Older	68	45	23	0	1,711	785	926	0
Unknown	6	2	1	3	706	296	275	135
TOTAL	806	577	226	3	50,610	24,101	26,374	135

Table 1 - 7

Arizona's 2009 Estimated Population

Race/Ethnic group	Population Percentage	Traffic Crash Fatality Percentage	Population Estimate*
White non-Hispanic	60.34%	55.99%	3,980,073
Hispanic or Latino	27.83%	22.27%	1,835,276
Black or African American	3.95%	3.91%	260,432
American Indian or Alaska Native	5.25%	16.28%	346,080
Asian or Pacific Islander	2.64%	1.43%	173,917
Ethnicity Unknown	N/A	0.13%	N/A
TOTAL	100.00%	100.00%	6,595,778

Source: Arizona Department of Health Services, Health Status and Vital Statistics Section.
*Population estimates for 2009 are available at <http://www.azdhs.gov/plan/menu/info/pop/pop09/pd09.htm>

Table 1 - 8

Victims of Motor Vehicle Crashes (Arizona Residents Only)*

Age of Victim	Total Killed	Male	Female	Detail Breakdown:					
				White non-Hispanic	Hispanic or Latino	Black or African American	American Indian or Alaska Native	Asian or Pacific Islander	Ethnicity Unknown
Less Than 1	0	0	0	0	0	0	0	0	0
1-14	48	29	19	18	17	3	8	2	0
15-19	50	36	14	21	20	1	7	1	0
20-44	328	244	84	145	87	14	77	5	0
45-64	213	154	59	143	30	10	27	2	1
65 & Older	129	88	41	103	17	2	6	1	0
TOTAL	768	551	217	430	171	30	125	11	1

Source: Arizona Department of Health Services, Health Status and Vital Statistics Section.
*Includes victims of crashes occurring outside Arizona.

Section 1: – Highlights and Historical Trends

Chart 1 - 5
Vehicle Miles Traveled

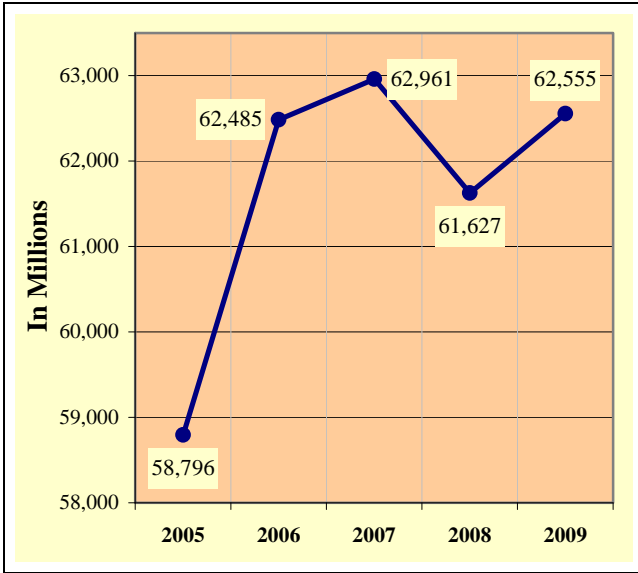
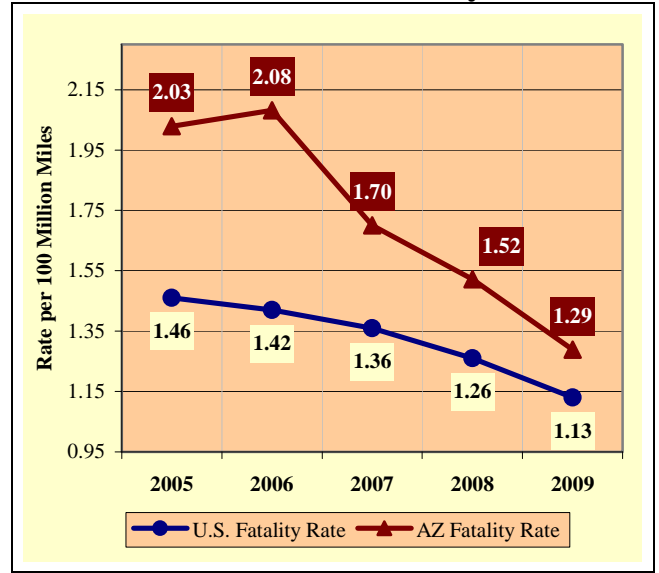


Chart 1 - 6
Arizona vs. U.S. Fatality Rate



Source: ADOT – Multimodal Planning Division – Data Bureau

Chart 1 - 7
Traffic Fatalities by Geographic Region

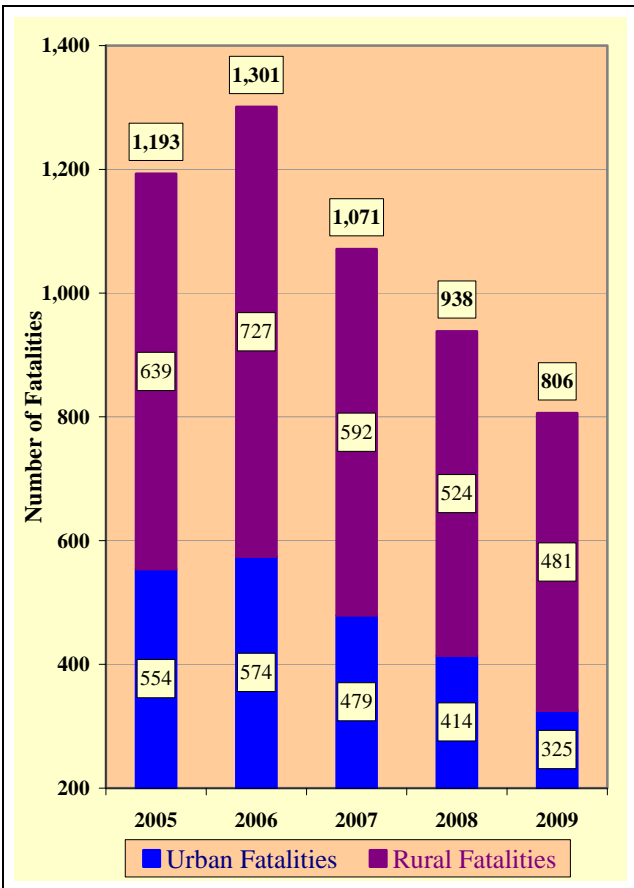
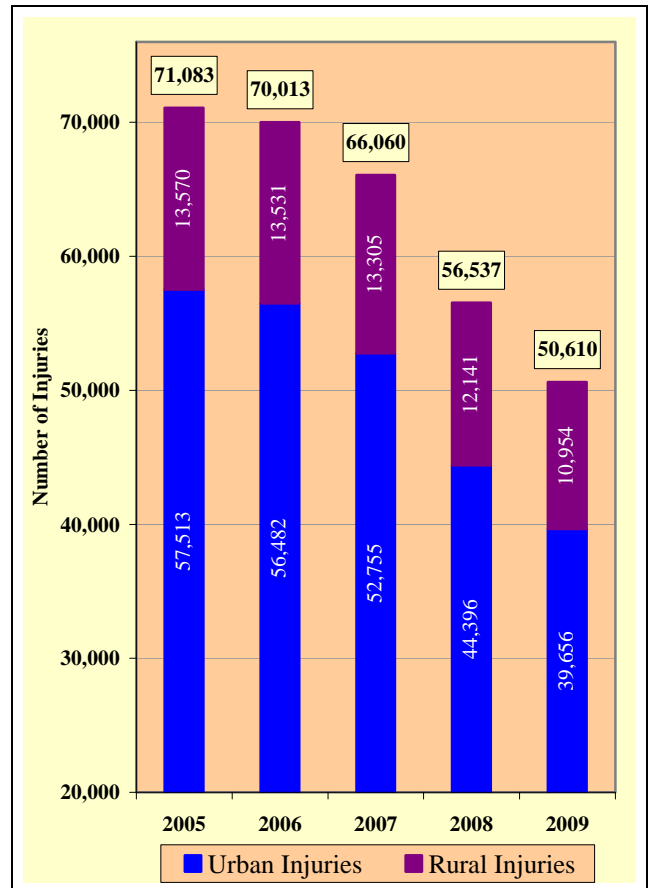


Chart 1 - 8
Traffic Injuries by Geographic Region



Section 1: – Highlights and Historical Trends

Table 1 - 9

Holiday Crash Statistics

Holidays such as Memorial Day, Labor Day, and Thanksgiving are regarded as three or four day weekend holidays for statistical purposes. Holidays such as Christmas, New Year's Day, and the Fourth of July are celebrated on specific dates; which make the holiday period range from two to five days in length.

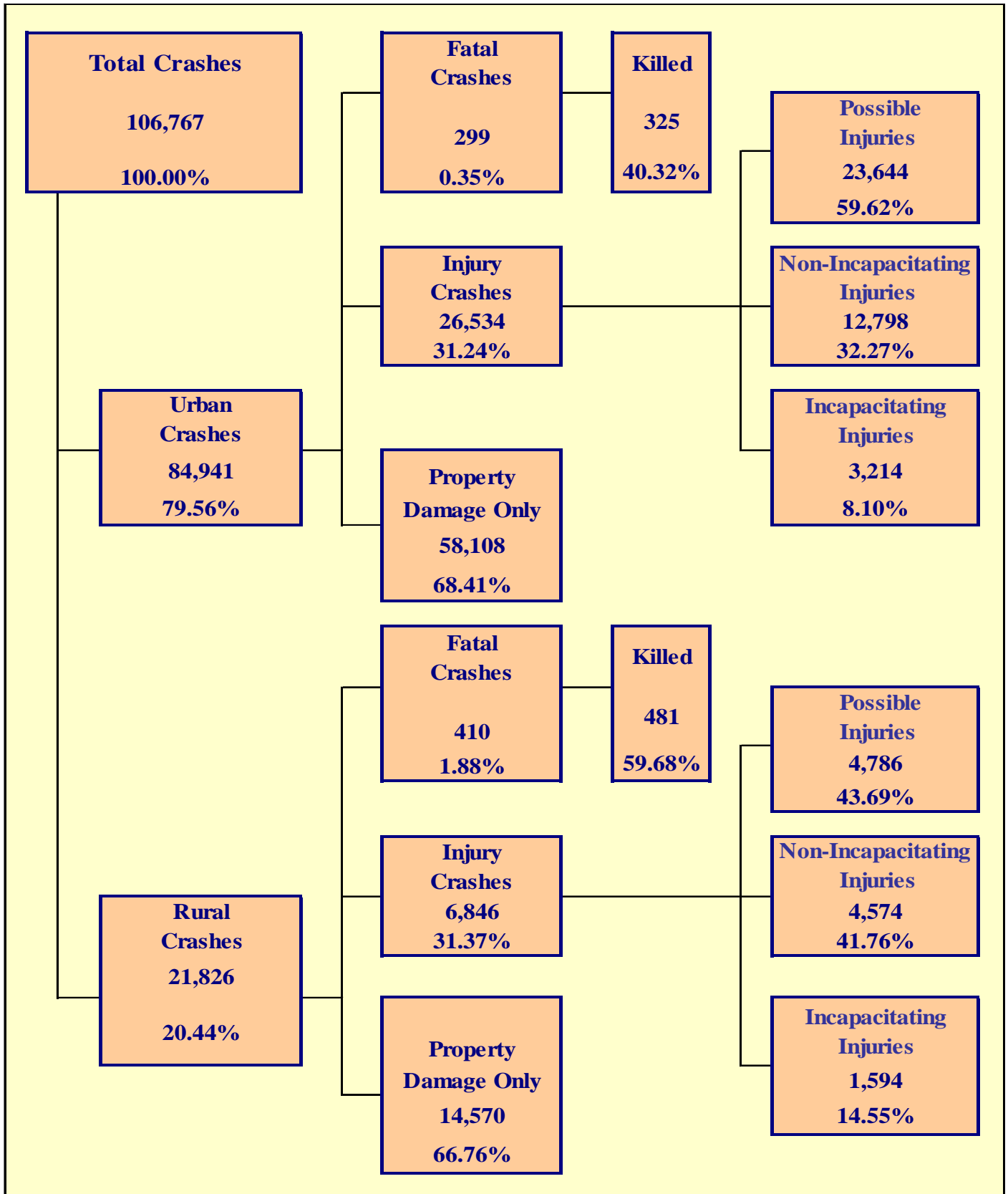
Holiday fatality statistics are based on fatal crashes occurring from 6:00 p.m. on the last working day prior to the holiday through 5:59 a.m. the day following the holiday period. Example: Thanksgiving fatalities are counted from Wednesday evening at 6:00 p.m. through 5:59 a.m. of the following Monday.

2009 Holidays	Beginning at 6:00 p.m.	Ending at 5:59 a.m.	Number of Days	Fatal Crashes	Persons Killed	Alcohol Related Fatal Crashes	Alcohol Related Fatalities
New Year's Day	Wednesday 12/31/2008	Monday 1/5/2009	5	10	11	3	3
Memorial Day	Friday 5/22/2009	Tuesday 5/26/2009	4	6	7	2	3
July 4th	Thursday 7/2/2009	Monday 7/6/2009	4	7	7	1	1
Labor Day	Friday 9/4/2009	Tuesday 9/8/2009	4	5	7	1	2
Thanksgiving Day	Wednesday 11/25/2009	Monday 11/30/2009	5	11	12	4	4
Christmas Day	Thursday 12/24/2009	Monday 12/28/2009	4	7	7	3	3

Fatal Crashes by Year	New Year's Day	Memorial Day	July 4th	Labor Day	Thanksgiving	Christmas Day	Total
2005	18	12	18	5	19	6	78
2006	26	12	22	17	13	13	103
2007	9	7	1	10	14	9	50
2008	10	14	13	14	5	2	58
2009	10	6	7	5	11	7	46

Persons Killed	New Year's Day	Memorial Day	July 4th	Labor Day	Thanksgiving	Christmas Day	Total
2005	23	14	20	8	23	6	94
2006	28	13	24	24	15	13	117
2007	9	7	1	11	16	12	56
2008	11	17	15	19	5	2	69
2009	11	7	7	7	12	7	51

Number of Days	New Year's Day	Memorial Day	July 4th	Labor Day	Thanksgiving	Christmas Day	Total
2005	4	4	4	4	5	4	25
2006	4	4	5	4	5	4	26
2007	4	4	2	4	5	5	24
2008	5	4	4	4	5	5	27
2009	5	4	4	4	5	4	26



Section 2: – Geographic Location

Fatal Crashes in Arizona (709) accounted for 0.66% of all crashes, Injury Crashes (33,380) accounted for 31.26%, and Property Damage Only (PDO) Crashes (72,678) accounted for 68.07%.

Table 2 - 1

Crash Severity by First Harmful Event Statewide

First Harmful Event Type	Number of Crashes				Number of Persons	
	Total	Fatal	Injury	PDO	Killed	Injured
Collision with Motor Vehicle in Transport	79,419	221	24,128	55,070	267	38,578
Overturning	2,850	144	1,742	964	180	2,737
Collision with Pedestrian	1,261	119	1,023	119	121	1,111
Collision with Pedalcyclist	1,402	25	1,172	205	25	1,209
Collision with Animal	1,787	4	181	1,602	4	230
Collision with Fixed Object	11,553	157	3,410	7,986	168	4,437
Collision with Non-fixed Object*	4,130	9	546	3,575	9	765
Vehicle Fire or Explosion	367	1	10	356	1	12
Other Non-collision**	1,622	29	566	1,027	31	665
Unknown	2,376	0	602	1,774	0	866
TOTAL	106,767	709	33,380	72,678	806	50,610
*Includes Collision with Parked Vehicles, Trains, Railway Vehicles, and Work Zone Equipment						
**Includes Vehicle Immersion, Jackknife, and Cargo Loss or Shift						

Table 2 - 2

Crashes by County

County	Number of Crashes				Number of Persons	
	Total	Fatal	Injury	PDO	Killed	Injured
Apache	591	29	203	359	31	340
Cochise	1,876	30	486	1,360	39	724
Coconino	3,768	39	903	2,826	41	1,427
Gila	984	17	303	664	17	440
Graham	287	8	94	185	10	170
Greenlee	67	2	25	40	2	36
La Paz	421	15	131	275	18	222
Maricopa	68,653	280	21,410	46,963	306	32,204
Mohave	2,940	34	974	1,932	42	1,474
Navajo	1,241	38	360	843	45	597
Pima	15,669	83	5,292	10,294	95	7,926
Pinal	3,541	62	1,079	2,400	73	1,720
Santa Cruz	591	6	149	436	16	249
Yavapai	3,313	42	1,003	2,268	46	1,570
Yuma	2,825	24	968	1,833	25	1,511
TOTAL	106,767	709	33,380	72,678	806	50,610

Table 2 - 3

Crash Severity by First Harmful Event in Urban Areas

First Harmful Event Type	Number of Crashes				Number of Persons	
	Total	Fatal	Injury	PDO	Killed	Injured
Collision with Motor Vehicle in Transport	68,543	118	20,795	47,630	140	32,788
Overturning	650	13	442	195	13	592
Collision with Pedestrian	1,110	76	926	108	77	998
Collision with Pedalcyclist	1,295	17	1,094	184	17	1,127
Collision with Animal	206	0	26	180	0	32
Collision with Fixed Object	7,430	61	2,105	5,264	64	2,622
Collision with Non-fixed Object*	2,997	4	369	2,624	4	498
Vehicle Fire or Explosion	117	0	5	112	0	5
Other Non-collision**	824	10	339	475	10	375
Unknown	1,769	0	433	1,336	0	619
TOTAL	84,941	299	26,534	58,108	325	39,656
*Includes Collision with Parked Vehicles, Trains, Railway Vehicles, and Work Zone Equipment						
**Includes Vehicle Immersion, Jackknife, and Cargo Loss or Shift						

Table 2 - 4

Crash Severity by First Harmful Event in Rural Areas

First Harmful Event Type	Number of Crashes				Number of Persons	
	Total	Fatal	Injury	PDO	Killed	Injured
Collision with Motor Vehicle in Transport	10,876	103	3,333	7,440	127	5,790
Overturning	2,200	131	1,300	769	167	2,145
Collision with Pedestrian	151	43	97	11	44	113
Collision with Pedalcyclist	107	8	78	21	8	82
Collision with Animal	1,581	4	155	1,422	4	198
Collision with Fixed Object	4,123	96	1,305	2,722	104	1,815
Collision with Non-fixed Object*	1,133	5	177	951	5	267
Vehicle Fire or Explosion	250	1	5	244	1	7
Other Non-collision**	798	19	227	552	21	290
Unknown	607	0	169	438	0	247
TOTAL	21,826	410	6,846	14,570	481	10,954
*Includes Collision with Parked Vehicles, Trains, Railway Vehicles, and Work Zone Equipment						
**Includes Vehicle Immersion, Jackknife, and Cargo Loss or Shift						

While Urban Crashes in Arizona (84,941) accounted for 79.56% of all crashes, they accounted for 42.17% of all Fatal Crashes (299) occurring in 2009.

While Rural Crashes in Arizona (21,826) accounted for 20.44% of all crashes, they accounted for 57.83% of all Fatal Crashes (410) occurring in 2009.

Section 2: – Geographic Location

Table 2 - 5

Analysis by Jurisdiction

COUNTIES Cities	Number of Crashes				No. of Persons		Alcohol Related		
	Total	Fatal	Injury	PDO	Killed	Injured	Crashes	Killed	Injured
Apache County	509	29	180	300	31	307	55	7	66
Eagar	42	0	14	28	0	22	3	0	3
St. Johns	16	0	5	11	0	7	1	0	1
Springerville	24	0	4	20	0	4	0	0	0
TOTAL	591	29	203	359	31	340	59	7	70

Cochise County	778	20	220	538	27	367	48	5	30
Benson	68	0	14	54	0	23	3	0	0
Bisbee	6	2	0	4	3	3	1	0	0
Douglas	210	2	35	173	2	40	13	1	1
Huachuca City	12	0	5	7	0	6	1	0	1
Sierra Vista	750	5	205	540	5	275	28	2	12
Tombstone	3	1	0	2	2	0	0	0	0
Willcox	49	0	7	42	0	10	1	0	0
TOTAL	1,876	30	486	1,360	39	724	95	8	44

Coconino County	1,477	35	420	1,022	37	741	66	10	59
Flagstaff	1,940	2	412	1,526	2	580	75	1	39
Williams	104	2	17	85	2	29	5	2	3
Page	29	0	7	22	0	14	1	0	0
Sedona	218	0	47	171	0	63	3	0	2
TOTAL	3,768	39	903	2,826	41	1,427	150	13	103

Gila County	608	16	190	402	16	286	53	6	49
Globe	194	1	63	130	1	84	18	0	7
Miami	15	0	3	12	0	3	0	0	0
Payson	167	0	47	120	0	67	10	0	1
TOTAL	984	17	303	664	17	440	81	6	57

Graham County	153	7	48	98	8	100	16	6	7
Pima	3	0	1	2	0	2	0	0	0
Safford	79	1	28	50	2	42	10	0	9
Thatcher	52	0	17	35	0	26	5	0	7
TOTAL	287	8	94	185	10	170	31	6	23

Greenlee County	47	1	20	26	1	26	4	0	3
Clifton	19	1	5	13	1	10	2	1	1
Duncan	1	0	0	1	0	0	0	0	0
TOTAL	67	2	25	40	2	36	6	1	4

Table 2 - 5

Analysis by Jurisdiction

COUNTIES Cities	Number of Crashes				No. of Persons		Alcohol Related		
	Total	Fatal	Injury	PDO	Killed	Injured	Crashes	Killed	Injured
La Paz County	333	12	107	214	15	178	12	0	11
Parker	34	0	8	26	0	11	1	0	1
Quartzite	54	3	16	35	3	33	2	0	0
TOTAL	421	15	131	275	18	222	15	0	12

Maricopa County	5,161	60	1,708	3,393	67	2,675	276	24	199
Avondale	1,036	1	290	745	1	457	49	0	45
Buckeye	371	3	116	252	3	174	33	0	25
Cave Creek	52	1	13	38	1	20	6	1	4
Chandler	3,479	3	980	2,496	3	1,438	185	2	103
El Mirage	326	2	94	230	2	135	24	1	18
Gila Bend	26	0	9	17	0	13	1	0	0
Gilbert	2,154	4	608	1,542	4	831	119	2	59
Glendale	4,479	14	1,283	3,182	14	1,908	224	7	140
Goodyear	813	2	235	576	2	378	37	2	23
Mesa	6,543	20	2,088	4,435	22	2,958	351	6	219
Paradise Valley	192	0	45	147	0	54	2	0	2
Peoria	2,404	3	668	1,733	3	981	93	2	50
Phoenix	29,282	142	9,714	19,426	157	15,129	1,581	60	1,149
Scottsdale	3,687	6	1,121	2,560	7	1,548	226	3	128
Surprise	1,046	3	256	787	3	398	41	0	30
Tempe	6,479	11	1,907	4,561	11	2,692	300	2	183
Tolleson	446	2	117	327	3	197	15	0	21
Wickenburg	119	0	24	95	0	29	3	0	1
Youngtown	5	1	2	2	1	4	0	0	0
Guadalupe	231	0	56	175	0	82	10	0	5
Litchfield Park	46	0	12	34	0	14	5	0	1
Queen Creek	100	1	23	76	1	35	5	0	4
Fountain Hills	148	1	35	112	1	43	12	0	7
Carefree	28	0	6	22	0	11	3	0	2
TOTAL	68,653	280	21,410	46,963	306	32,204	3,601	112	2,418

Mohave County	1,194	27	435	732	35	688	98	9	85
Kingman	510	2	174	334	2	256	25	0	20
Lake Havasu City	562	2	157	403	2	224	56	1	31
Bullhead City	652	3	198	451	3	285	58	3	39
Colorado City	22	0	10	12	0	21	3	0	0
TOTAL	2,940	34	974	1,932	42	1,474	240	13	175

Section 2: – Geographic Location

Table 2 - 5

Analysis by Jurisdiction

COUNTIES Cities	Number of Crashes				No. of Persons		Alcohol Related		
	Total	Fatal	Injury	PDO	Killed	Injured	Crashes	Killed	Injured
Navajo County	702	30	224	448	37	390	62	8	73
Holbrook	79	2	21	56	2	37	8	1	4
Show Low	174	1	48	125	1	69	8	0	8
Snowflake	68	4	15	49	4	23	5	2	3
Taylor	19	0	3	16	0	3	1	0	0
Winslow	101	0	22	79	0	29	16	0	11
Pinetop-Lakeside	98	1	27	70	1	46	3	1	1
TOTAL	1,241	38	360	843	45	597	103	12	100

Pima County	4,331	52	1,363	2,916	61	2,056	295	24	236
South Tucson	116	0	35	81	0	52	4	0	2
Tucson	9,722	27	3,556	6,139	30	5,307	483	14	401
Sahuarita	181	2	36	143	2	58	7	0	6
Oro Valley	444	0	120	324	0	171	6	0	1
Marana	875	2	182	691	2	282	27	0	16
TOTAL	15,669	83	5,292	10,294	95	7,926	822	38	662

Pinal County	1,696	47	568	1,081	56	962	144	20	128
Casa Grande	859	6	225	628	8	335	39	0	17
Coolidge	165	0	44	121	0	66	17	0	11
Eloy	143	2	39	102	2	45	8	0	8
Florence	79	0	18	61	0	23	6	0	1
Kearny	1	0	0	1	0	0	1	0	0
Mammoth	8	1	1	6	1	2	1	1	0
Superior	3	0	1	2	0	1	0	0	0
Apache Junction	376	2	125	249	2	180	18	0	8
Maricopa	211	4	58	149	4	106	20	2	18
TOTAL	3,541	62	1,079	2,400	73	1,720	254	23	191

Santa Cruz County	311	6	93	212	16	160	22	2	14
Nogales	280	0	56	224	0	89	5	0	1
TOTAL	591	6	149	436	16	249	27	2	15

Yavapai County	1,482	27	484	971	31	737	88	5	58
Clarkdale	3	0	0	3	0	0	0	0	0
Cottonwood	276	4	80	192	4	118	19	2	7
Jerome	17	0	4	13	0	6	3	0	4
Prescott	759	5	222	532	5	320	42	2	34
Prescott Valley	515	1	136	378	1	215	27	0	17
Chino Valley	112	1	32	79	1	86	5	0	2
Camp Verde	132	4	37	91	4	79	15	2	9
Dewey-Humboldt	17	0	8	9	0	9	1	0	1
TOTAL	3,313	42	1,003	2,268	46	1,570	200	11	132

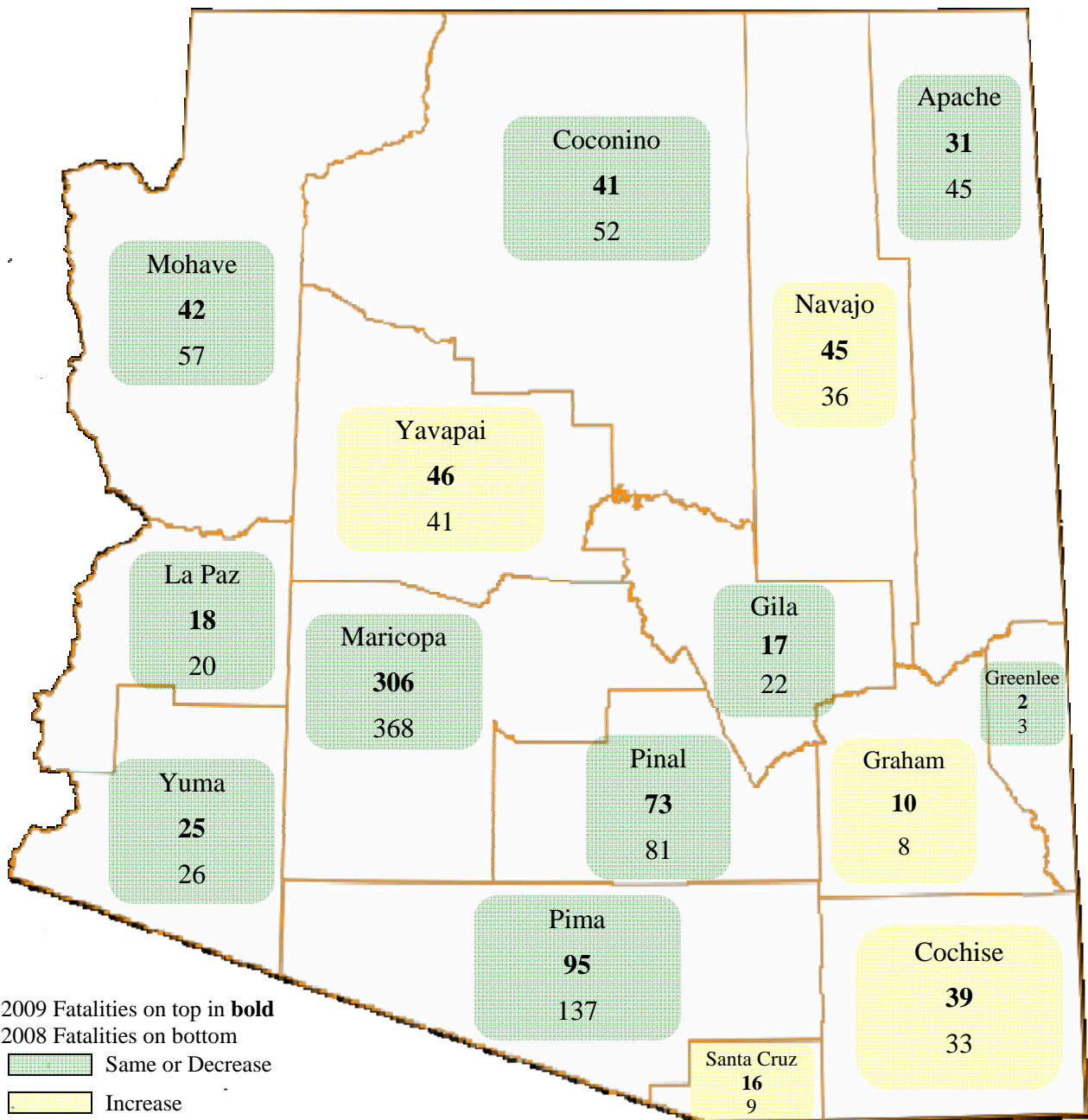
Table 2 - 5

Analysis by Jurisdiction

COUNTIES Cities	Number of Crashes				No. of Persons		Alcohol Related		
	Total	Fatal	Injury	PDO	Killed	Injured	Crashes	Killed	Injured
Yuma County	749	15	255	479	16	415	56	6	47
Somerton	25	1	7	17	1	15	0	0	0
Yuma	1,965	7	689	1,269	7	1,057	113	3	88
Wellton	8	0	3	5	0	3	0	0	0
San Luis	78	1	14	63	1	21	1	0	1
TOTAL	2,825	24	968	1,833	25	1,511	170	9	136

Some individual city data may be incomplete due to lack of timely reporting.
Totals within city and town jurisdictions include all state highways.

Total Fatalities by County for 2008 and 2009



Section 2: – Geographic Location

Chart 2 - 1

Urban and Rural Crashes by Day of Week

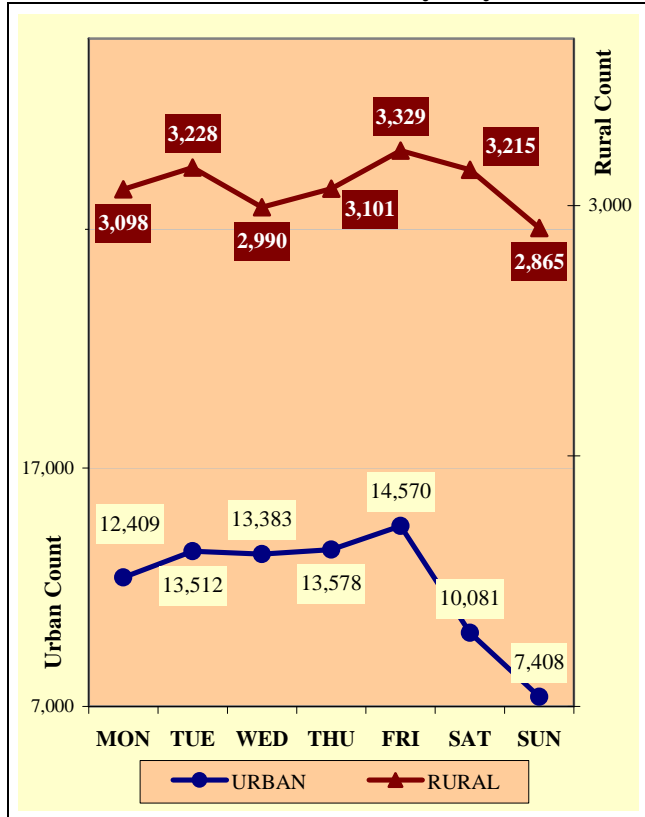


Chart 2 - 2

Urban and Rural Fatal Crashes by Day of Week

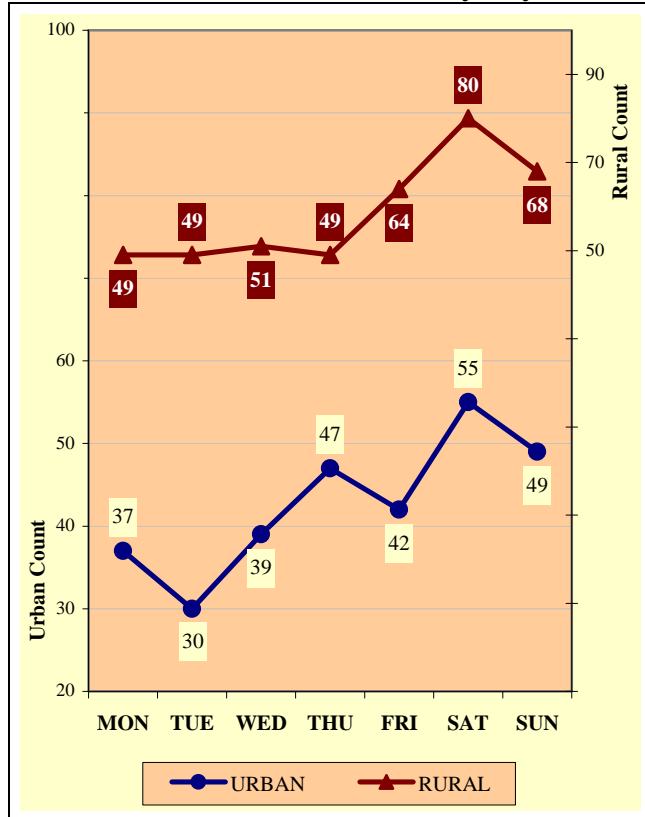
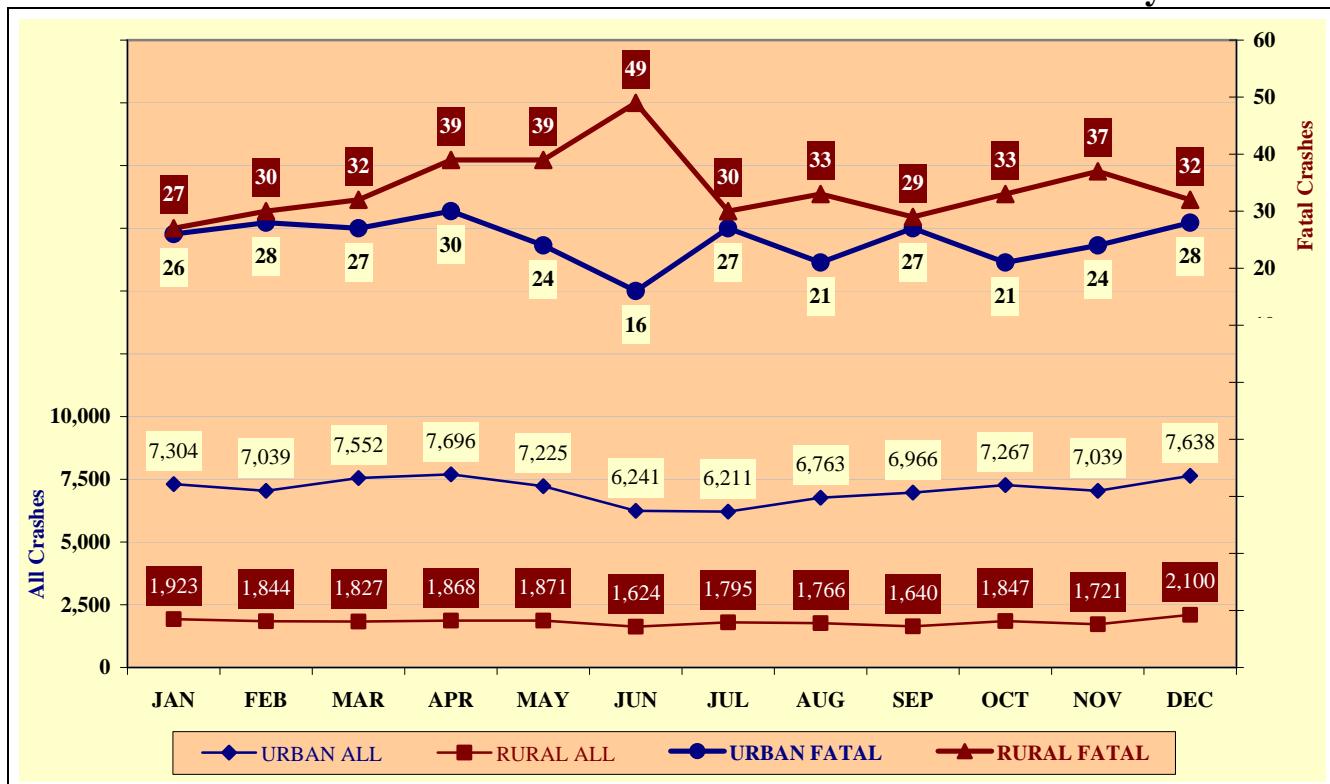
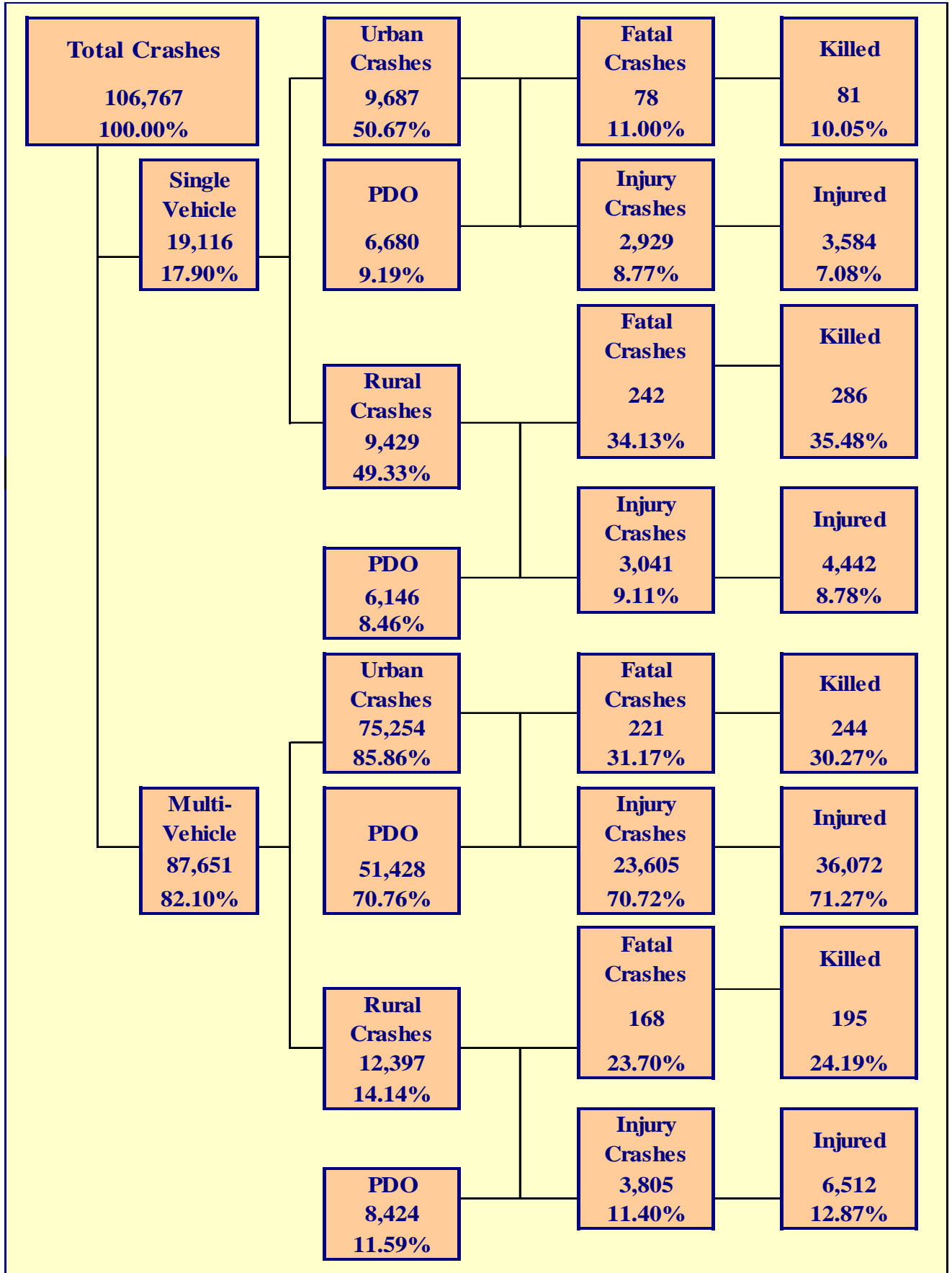


Chart 2 - 3

All Urban and Rural Crashes vs. Urban and Rural Fatal Crashes by Month





Section 3: – Crash Descriptions

Table 3 - 1

Manner of Collision in Multi-Vehicle Crashes

Manner of Collision Type	Number of Crashes							
	Total	Percent of Total Crashes	Fatal	Percent of Fatal Crashes	Injury	Percent of Injury Crashes	PDO	Percent of PDO Crashes
Angle	16,160	18.44%	82	21.08%	6,791	24.78%	9,287	15.52%
Left Turn	6,386	7.29%	24	6.17%	2,769	10.10%	3,593	6.00%
Read End	39,870	45.49%	47	12.08%	11,832	43.17%	27,991	46.77%
Head-On	2,506	2.86%	69	17.74%	1,221	4.45%	1,216	2.03%
Sideswipe (same)	14,319	16.34%	20	5.14%	2,178	7.95%	12,121	20.25%
Sideswipe (opposite)	1,371	1.56%	5	1.29%	337	1.23%	1,029	1.72%
Rear to Side	1,191	1.36%	2	0.51%	86	0.31%	1,103	1.84%
Rear to Rear	383	0.44%	0	0.00%	60	0.22%	323	0.54%
Other	4,617	5.27%	133	34.19%	1,980	7.22%	2,504	4.18%
Unknown	848	0.97%	7	1.80%	156	0.57%	685	1.14%
TOTAL	87,651	100.00%	389	100.00%	27,410	100.00%	59,852	100.00%

Table 3 - 2

Lighting Conditions

Type of Lighting Conditions	Number of Crashes				Number of Persons	
	Total	Fatal	Injury	PDO	Killed	Injured
Daylight	77,208	333	24,050	52,825	390	36,236
Dawn	1,925	17	639	1,269	23	938
Dusk	3,299	20	1,033	2,246	20	1,573
Dark - Lighted	16,234	116	5,343	10,775	124	8,183
Dark - Not Lighted	6,608	149	1,901	4,558	171	3,002
Dark - Unknown Lighting	1,493	74	414	1,005	78	678
TOTAL	106,767	709	33,380	72,678	806	50,610

Table 3 - 3

Weather Conditions

Type of Weather Conditions	Number of Crashes				Number of Persons	
	Total	Fatal	Injury	PDO	Killed	Injured
Clear	94,311	541	29,701	64,069	611	44,990
Cloudy	8,115	56	2,556	5,503	65	3,870
Sleet/Hail	83	1	24	58	1	46
Rain	2,310	15	652	1,643	17	952
Snow	803	4	166	633	5	282
Severe Crosswinds	155	3	59	93	5	113
Blowing Sand, Soil, Dirt	129	4	47	78	7	90
Fog, Smog, Smoke	20	0	10	10	0	12
Blowing Snow	60	0	10	50	0	15
Other	76	1	33	42	1	55
Unknown	705	84	122	499	94	185
TOTAL	106,767	709	33,380	72,678	806	50,610

Table 3 - 4

Road Surface Conditions

Type of Road Surface Condition	Number of Drivers				Number of Persons	
	Total	In Fatal Crashes	In Injury Crashes	In PDO Crashes	Killed	Injured
Dry	192,330	882	60,929	130,519	677	48,165
Wet	5,986	28	1,696	4,262	23	1,396
Snow	1,046	2	215	829	1	203
Slush	178	1	43	134	1	66
Ice/Frost	702	4	160	538	5	183
Water (standing or moving)	72	0	26	46	0	33
Sand	91	0	38	53	0	42
Mud, Dirt, Gravel	607	11	224	372	12	284
Oil	33	0	12	21	0	12
Other	131	1	46	84	1	45
Unknown	1,102	86	209	807	86	181
TOTAL	202,278	1,015	63,598	137,665	806	50,610

Table 3 - 5

Roadway Grade

Type of Roadway Grade	Number of Drivers				Number of Persons	
	Total	In Fatal Crashes	In Injury Crashes	In PDO Crashes	Killed	Injured
Level	172,671	749	54,033	117,889	562	42,340
Downhill	8,944	93	2,959	5,892	100	2,818
Uphill	7,385	57	2,303	5,025	38	2,000
Hillcrest	426	4	165	257	4	149
Sag/Dip/Bottom	134	3	60	71	2	63
Unknown	12,718	109	4,078	8,531	100	3,240
TOTAL	202,278	1,015	63,598	137,665	806	50,610

Table 3 - 6

Roadway Alignment

Type of Roadway Alignment	Number of Drivers				Number of Persons	
	Total	In Fatal Crashes	In Injury Crashes	In PDO Crashes	Killed	Injured
Straight	169,664	761	52,907	115,996	574	41,639
Curve Left	5,786	77	1,923	3,786	69	2,027
Curve Right	5,862	65	1,777	4,020	59	1,788
Unknown	20,966	112	6,991	13,863	104	5,156
TOTAL	202,278	1,015	63,598	137,665	806	50,610

Section 3: – Crash Descriptions

Chart 3 - 1

All Crashes vs. Fatal Crashes by Time of Day - Weekdays

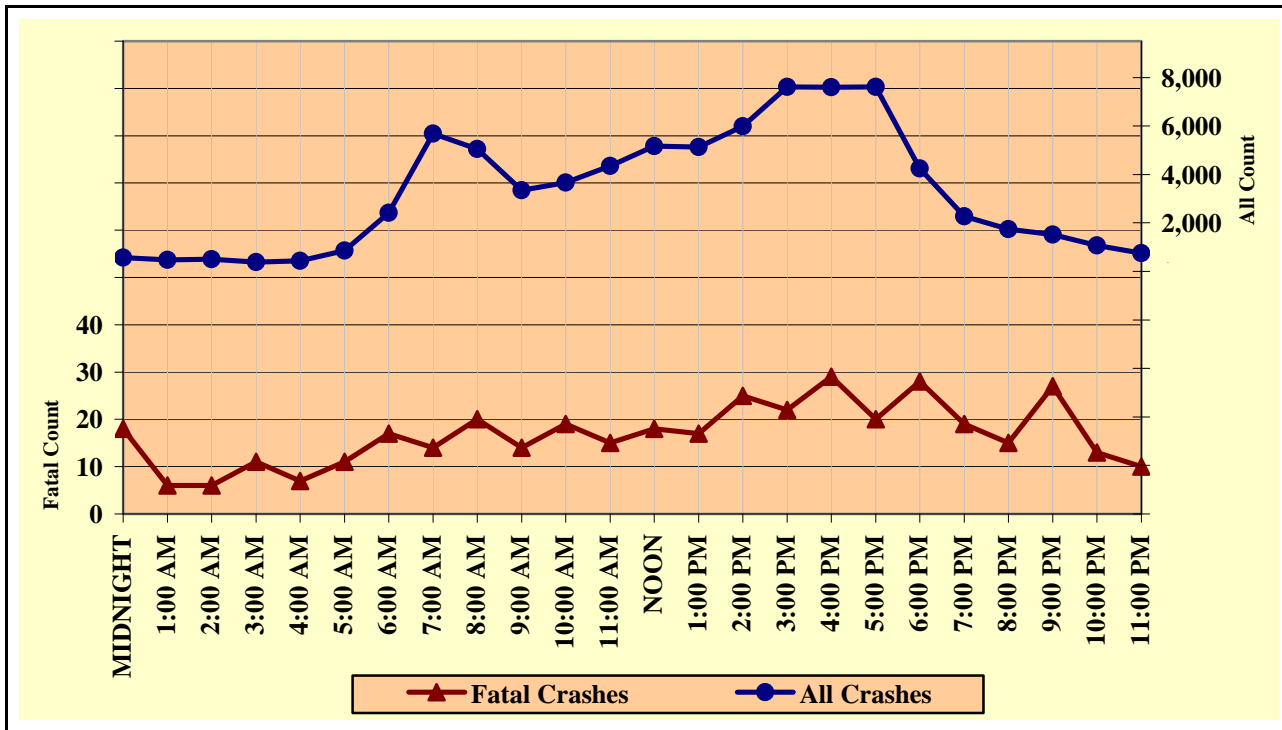


Chart 3 - 2

All Crashes vs. Fatal Crashes by Time of Day - Weekends

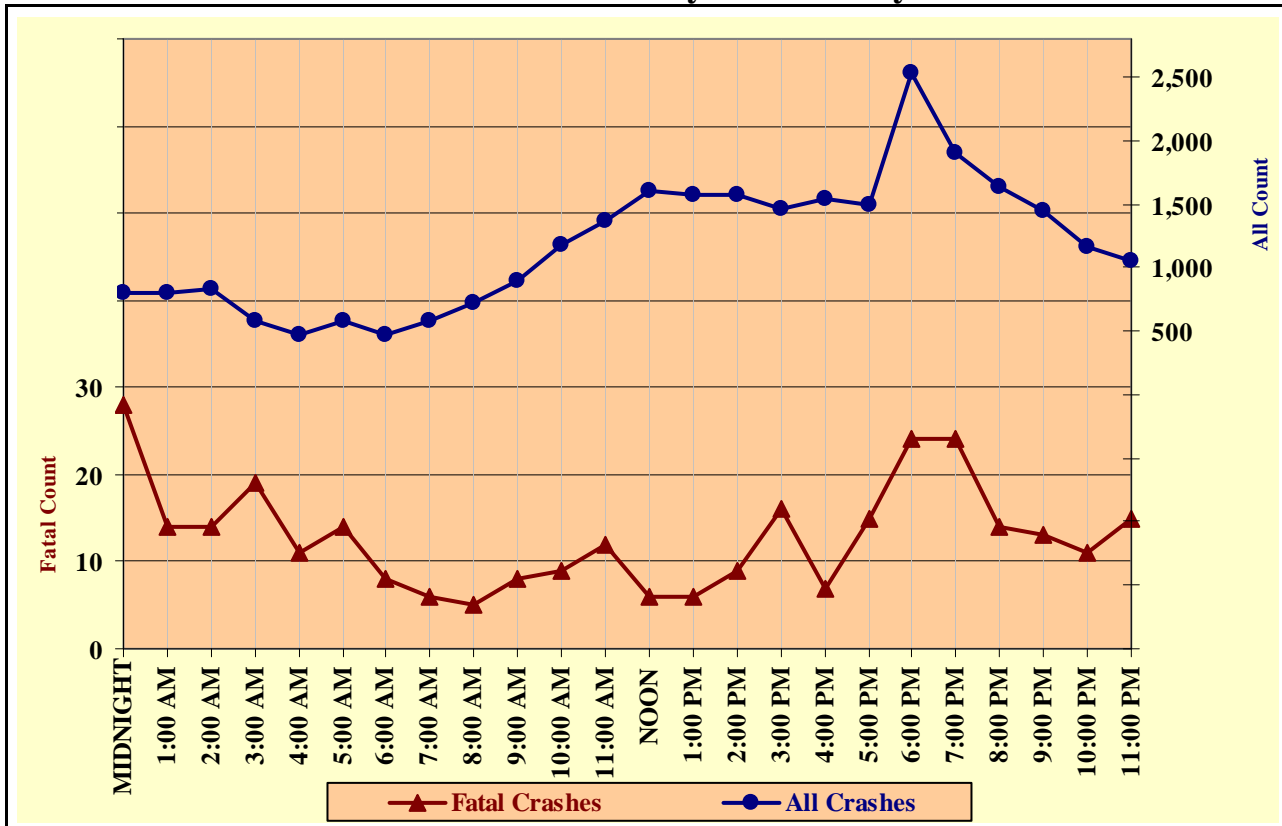


Chart 3 - 3

Crashes by Day of Week

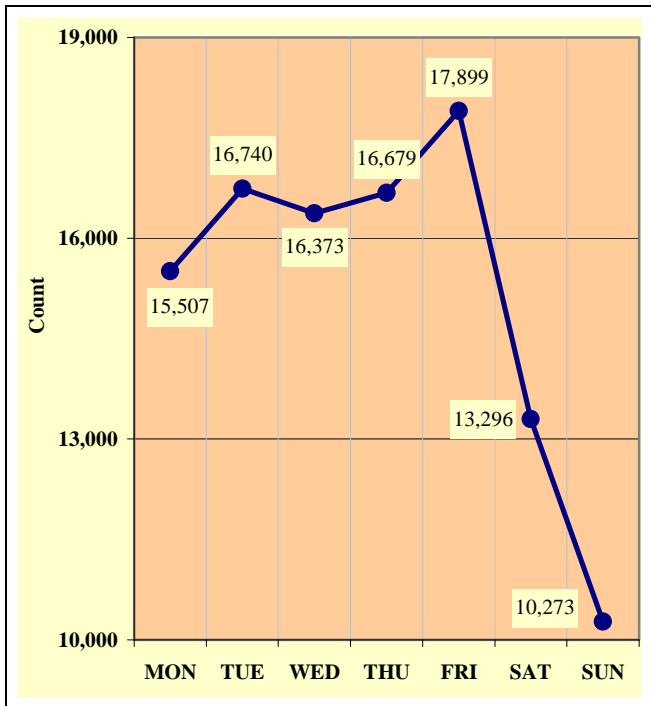


Chart 3 - 4

Fatal Crashes by Day of Week

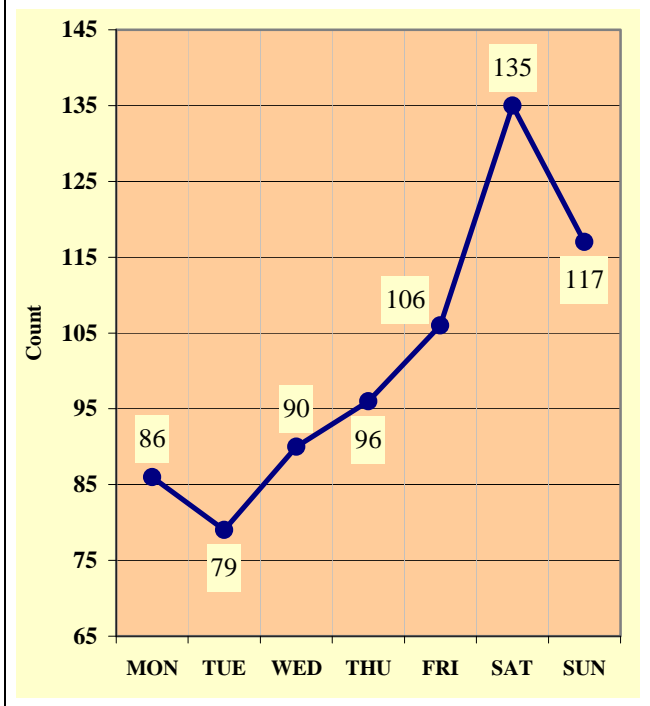
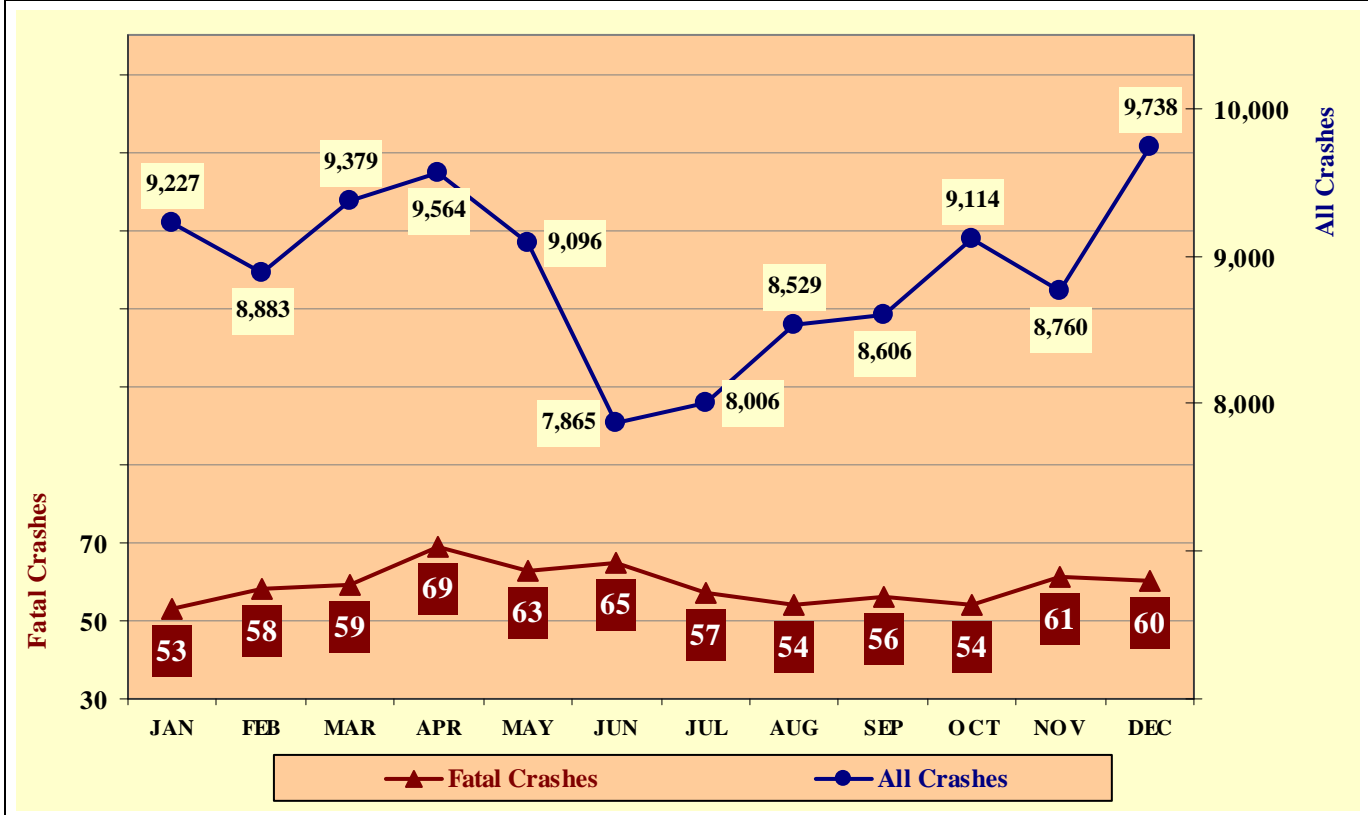


Chart 3 - 5

All Crashes vs. Fatal Crashes by Month



Section 3: – Crash Descriptions

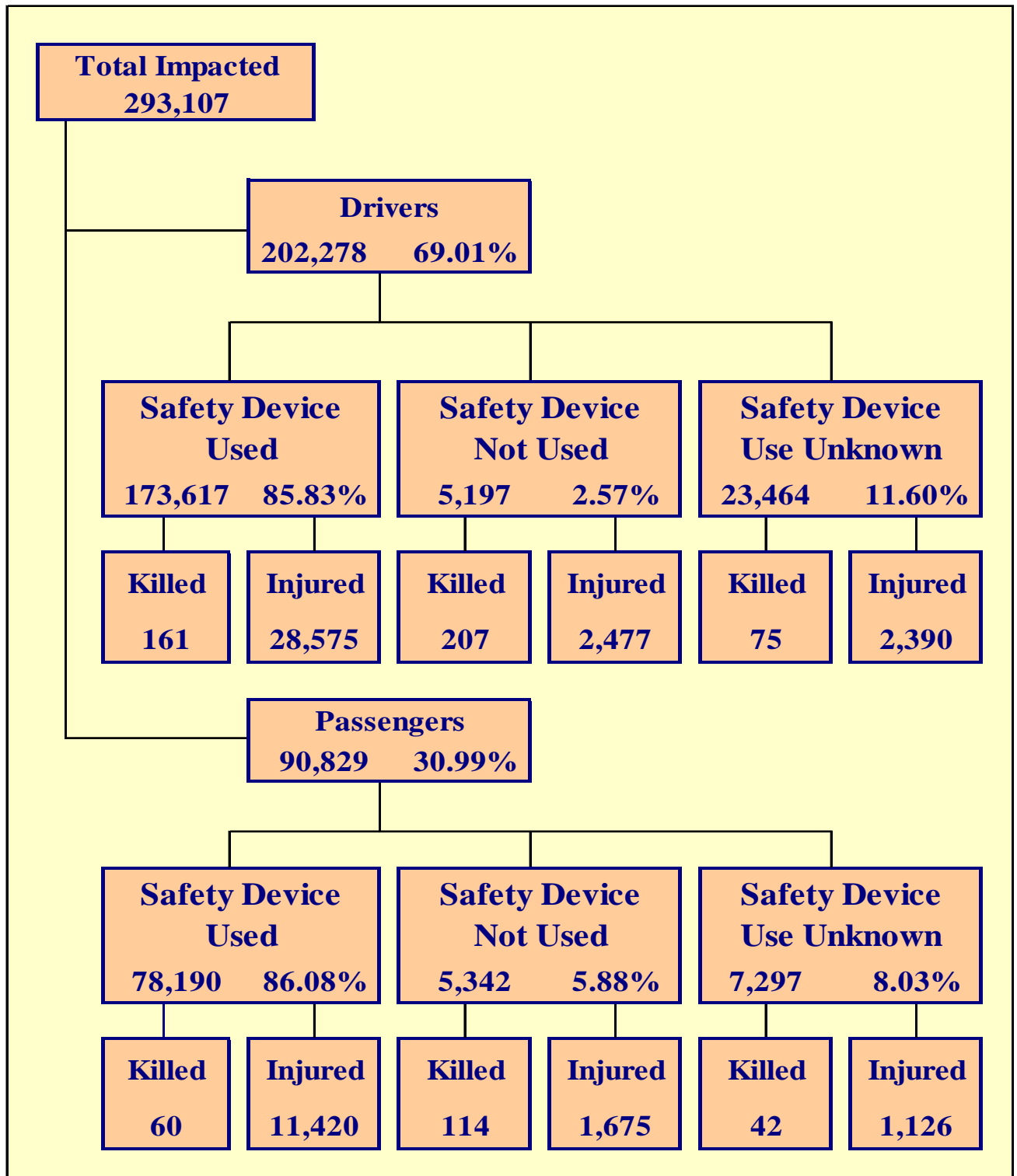
Table 3 - 7

Crashes by Hour and Day of Week

Hour Beginning	Total Crashes		Monday		Tuesday		Wednesday		Thursday		Friday		Saturday		Sunday		Weekdays		Weekends	
	All	Fatal	All	Fatal	All	Fatal	All	Fatal	All	Fatal	All	Fatal	All	Fatal	All	Fatal	All	Fatal	All	Fatal
MIDNIGHT	1,371	46	156	9	135	8	122	4	148	3	162	3	342	10	306	9	567	18	804	28
1:00 AM	1,279	20	119	2	84	0	119	2	122	1	153	3	342	7	340	5	478	6	801	14
2:00 AM	1,343	20	113	2	86	0	116	0	128	1	173	5	363	7	364	5	503	6	840	14
3:00 AM	969	30	82	1	75	1	88	3	106	5	117	2	243	8	258	10	386	11	583	19
4:00 AM	906	18	104	0	105	2	106	2	120	0	100	3	198	7	173	4	431	7	475	11
5:00 AM	1,434	25	196	6	251	2	193	2	209	1	207	6	161	4	217	4	860	11	574	14
6:00 AM	2,877	25	462	3	544	2	482	1	499	8	427	3	252	4	211	4	2,414	17	463	8
7:00 AM	6,272	20	1,130	1	1,308	4	1,180	3	1,113	4	961	2	344	2	236	4	5,692	14	580	6
8:00 AM	5,781	25	944	4	1,209	3	1,038	4	1,007	2	860	7	427	2	296	3	5,058	20	723	5
9:00 AM	4,243	22	650	3	721	2	679	1	645	3	655	5	568	4	325	4	3,350	14	893	8
10:00 AM	4,857	28	760	1	683	5	690	5	751	4	787	4	697	6	489	3	3,671	19	1,186	9
11:00 AM	5,732	27	847	1	811	4	914	3	838	4	950	3	821	8	551	4	4,360	15	1,372	12
NOON	6,772	24	993	3	1,016	1	960	3	1,028	5	1,173	6	948	5	654	1	5,170	18	1,602	6
1:00 PM	6,711	23	941	3	918	1	1,066	3	993	6	1,214	4	930	5	649	1	5,132	17	1,579	6
2:00 PM	7,567	34	1,162	4	1,167	8	1,141	4	1,222	6	1,305	3	899	6	671	3	5,997	25	1,570	9
3:00 PM	9,074	38	1,393	5	1,547	4	1,407	4	1,584	6	1,684	3	799	10	660	6	7,615	22	1,459	16
4:00 PM	9,146	36	1,424	7	1,583	7	1,566	8	1,449	1	1,580	6	844	6	700	1	7,602	29	1,544	7
5:00 PM	9,113	35	1,357	3	1,611	1	1,608	4	1,593	10	1,445	2	810	6	689	9	7,614	20	1,499	15
6:00 PM	6,772	52	979	5	1,103	6	1,031	11	1,133	6	1,129	10	764	5	633	9	4,246	28	2,526	24
7:00 PM	4,172	43	513	5	576	6	581	5	600	3	757	7	629	7	516	10	2,270	19	1,902	24
8:00 PM	3,376	29	409	4	422	2	455	4	454	5	592	5	580	3	464	6	1,740	15	1,636	14
9:00 PM	2,967	40	344	8	362	3	383	10	426	6	566	5	497	3	389	5	1,515	27	1,452	13
10:00 PM	2,234	24	263	3	245	4	267	2	289	4	471	3	434	6	265	2	1,064	13	1,170	11
11:00 PM	1,799	25	166	3	178	3	181	2	222	2	431	6	404	4	217	5	747	10	1,052	15
TOTAL	106,767	709	15,507	86	16,740	79	16,373	90	16,679	96	17,899	106	13,296	135	10,273	117	78,482	401	28,285	308

Crashes during Weekends accounted for 26.49% of all crashes and 43.44% of Fatal Crashes.

Crashes during Weekdays accounted for 73.51% of all crashes and 56.56% of Fatal Crashes.



Section 4: – Safety Devices

Table 4 - 1

Child Safety Device Usage (less than five years old)

Severity of Injury	Safety Device Used	Percent of Safety Device Used	Safety Device Not Used	Percent of Safety Device Not Used	Safety Device Use Unknown	Percent of Unknown
No Injury	11,308	89.89%	217	68.03%	293	66.59%
Unknown Injury	97	0.77%	6	1.88%	30	6.82%
Possible Injury	817	6.49%	34	10.66%	39	8.86%
Non-Incapacitating Injury	309	2.46%	42	13.17%	43	9.77%
Incapacitating Injury	40	0.32%	18	5.64%	26	5.91%
Fatal Injury	9	0.07%	2	0.63%	9	2.05%
TOTALS	12,580	100.00%	319	100.00%	440	100.00%

Table 4 - 2

Driver Safety Device Usage

Severity of Injury	Safety Device Used	Percent of Safety Device Used	Safety Device Not Used	Percent of Safety Device Not Used	Safety Device Use Unknown	Percent of Unknown
No Injury	144,230	83.07%	2,399	46.16%	12,248	52.20%
Unknown Injury	651	0.37%	114	2.19%	8,751	37.30%
Possible Injury	17,352	9.99%	657	12.64%	1,014	4.32%
Non-Incapacitating Injury	9,297	5.35%	1,175	22.61%	982	4.19%
Incapacitating Injury	1,926	1.11%	645	12.41%	394	1.68%
Fatal Injury	161	0.09%	207	3.98%	75	0.32%
TOTALS	173,617	100.00%	5,197	100.00%	23,464	100.00%

Table 4 - 3

Passenger Safety Device Usage

Severity of Injury	Safety Device Used	Percent of Safety Device Used	Safety Device Not Used	Percent of Safety Device Not Used	Safety Device Use Unknown	Percent of Unknown
No Injury	66,287	84.78%	3,492	65.37%	5,150	70.58%
Unknown Injury	423	0.54%	61	1.14%	979	13.42%
Possible Injury	7,330	9.37%	593	11.10%	537	7.36%
Non-Incapacitating Injury	3,385	4.33%	701	13.12%	399	5.47%
Incapacitating Injury	705	0.90%	381	7.13%	190	2.60%
Fatal Injury	60	0.08%	114	2.13%	42	0.58%
TOTALS	78,190	100.00%	5,342	100.00%	7,297	100.00%

Table 4 - 4

Driver Safety Device Usage by Gender

Gender of Driver	Number of Drivers							
	Safety Device Used	Percent of Safety Device Used	Safety Device Not Used	Percent of Safety Device Not Used	Safety Device Use Unknown	Percent of Unknown	Total	Percent of Total
Male	95,875	55.22%	3,493	67.21%	8,462	36.06%	107,830	53.31%
Female	77,587	44.69%	1,491	28.69%	3,821	16.28%	82,899	40.98%
Unknown	155	0.09%	213	4.10%	11,181	47.65%	11,549	5.71%
TOTAL	173,617	100.00%	5,197	100.00%	23,464	100.00%	202,278	100.00%

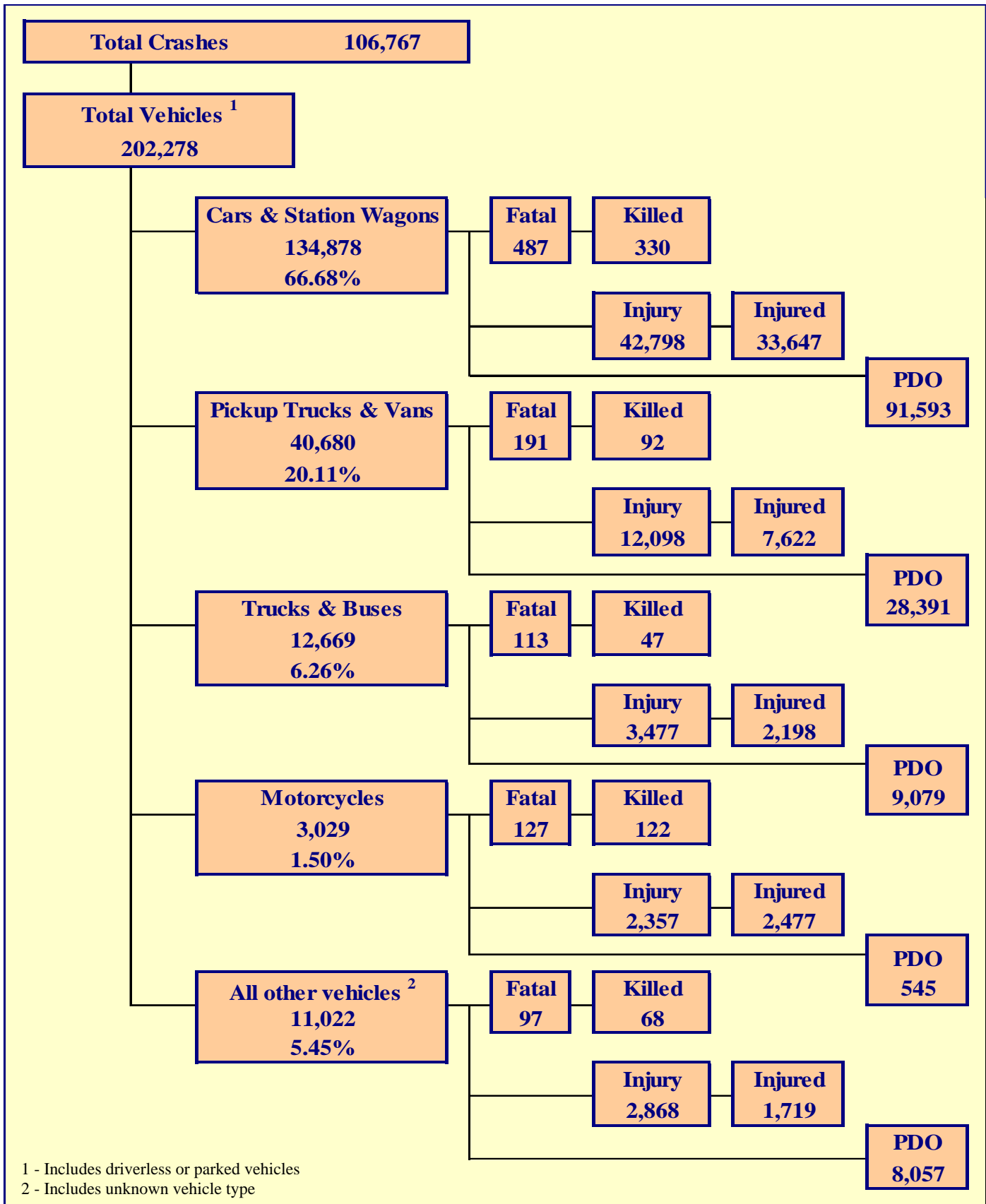
Table 4 - 5

Driver Safety Device Usage by Age

Driver Age Group	Number of Drivers							
	Safety Device Used	Percent of Safety Device Used	Safety Device Not Used	Percent of Safety Device Not Used	Safety Device Use Unknown	Percent of Unknown	Total	Percent of Total
15 & Under	244	0.14%	42	0.81%	68	0.29%	354	0.18%
16	2,654	1.53%	74	1.42%	120	0.51%	2,848	1.41%
17	4,205	2.42%	142	2.73%	240	1.02%	4,587	2.27%
18	5,919	3.41%	234	4.50%	313	1.33%	6,466	3.20%
19	5,771	3.32%	225	4.33%	342	1.46%	6,338	3.13%
20	5,260	3.03%	214	4.12%	356	1.52%	5,830	2.88%
21	5,063	2.92%	193	3.71%	373	1.59%	5,629	2.78%
22	4,769	2.75%	171	3.29%	341	1.45%	5,281	2.61%
23	4,642	2.67%	198	3.81%	329	1.40%	5,169	2.56%
24	4,447	2.56%	169	3.25%	274	1.17%	4,890	2.42%
25-34	37,479	21.59%	1,097	21.11%	2,499	10.65%	41,075	20.31%
35-44	30,926	17.81%	749	14.41%	1,911	8.14%	33,586	16.60%
45-54	27,357	15.76%	703	13.53%	1,646	7.02%	29,706	14.69%
55-64	18,581	10.70%	443	8.52%	990	4.22%	20,014	9.89%
65-74	9,540	5.49%	164	3.16%	417	1.78%	10,121	5.00%
75 & Older	6,100	3.51%	117	2.25%	283	1.21%	6,500	3.21%
Unknown	660	0.38%	262	5.04%	12,962	55.24%	13,884	6.86%
TOTAL	173,617	100.00%	5,197	100.00%	23,464	100.00%	202,278	100.00%

Section 5

Motor Vehicle and Driver Descriptions



Section 5: – Motor Vehicle and Driver Descriptions

Table 5 - 1

Arizona Motor Vehicle Registrations

Privately Owned Vehicles	4,202,706
Commercial Vehicles	424,711
Buses and Taxis	3,789
Motorcycles	155,722
Mopeds	422
TOTAL	4,787,350
Source: MVD - MV988 MV630419, Currently Registered Vehicles by County Listing, dated 12/31/2009.	

Table 5 - 2

Motor Vehicle Crash Involvement by Vehicle Type

Motor Vehicle Type	Number of Vehicles				
	Total	Percent of Total	In Fatal Crashes	In Injury Crashes	In PDO Crashes
Passenger Cars (Sedans, Convertibles, etc.)	98,888	48.887%	308	31,433	67,147
Station Wagons	35,990	17.792%	179	11,365	24,446
Pickup Trucks	38,674	19.119%	178	11,504	26,992
Vans	2,006	0.992%	13	594	1,399
Truck Tractor (with or without Semi-Trailer)	2,457	1.215%	54	571	1,832
Concrete Mixer Trucks	31	0.015%	0	6	25
Dump Trucks	164	0.081%	1	34	129
Garbage Trucks	121	0.060%	1	24	96
Tanker Trucks	42	0.021%	1	7	34
Wrecker or Tow Trucks	143	0.071%	0	30	113
Other Truck Combinations	8,387	4.146%	49	2,529	5,809
School Bus	238	0.118%	0	49	189
Commercial or Non-Commercial Bus	1,086	0.537%	7	227	852
Motorcycle (two or three wheel)	3,029	1.497%	127	2,357	545
All Terrain Vehicle or Cycle	169	0.084%	8	135	26
Moped	21	0.010%	0	19	2
Recreational Vehicle	153	0.076%	0	39	114
Motor Home or House Car	202	0.100%	2	33	167
Fire Trucks	40	0.020%	0	1	39
Ambulances	80	0.040%	1	18	61
Other Types Of Vehicles	305	0.151%	2	108	195
Vehicle Type Unknown	10,052	4.969%	84	2,515	7,453
TOTAL	202,278	100.00%	1,015	63,598	137,665

Section 5: – Motor Vehicle and Driver Descriptions

Table 5 - 3

Hit and Run Drivers Involved in Crashes

Hit and Run	Number of Crashes				Number of Persons	
	Total	Fatal	Injury	PDO	Killed	Injured
Yes	12,780	39	2,658	10,083	41	3,647
No	93,987	670	30,722	62,595	765	46,963
TOTAL	106,767	709	33,380	72,678	806	50,610

Table 5 - 4

Gender of Drivers Involved in Crashes

Gender of Driver	Number of Drivers							
	Total	Percent of Total	In Fatal Crashes	Percent of Fatal	In Injury Crashes	Percent of Injury	In PDO Crashes	Percent of PDO
Male	107,830	53.31%	695	68.47%	33,829	53.19%	73,306	53.25%
Female	82,899	40.98%	261	25.71%	27,815	43.74%	54,823	39.82%
Unknown	11,549	5.71%	59	5.81%	1,954	3.07%	9,536	6.93%
TOTAL	202,278	100.00%	1,015	100.00%	63,598	100.00%	137,665	100.00%

Table 5 - 5

License Status of Drivers Involved in Crashes

License Status of Driver	Number of Drivers							
	Total	Percent of Total	In Fatal Crashes	Percent of Fatal	In Injury Crashes	Percent of Injury	In PDO Crashes	Percent of PDO
Arizona License	163,060	80.61%	725	71.43%	52,686	82.84%	109,649	79.65%
All Others*	39,218	19.39%	290	28.57%	10,912	17.16%	28,016	20.35%
TOTAL	202,278	100.00%	1,015	100.00%	63,598	100.00%	137,665	100.00%

*Includes drivers that have a suspended, revoked, out-of-state or country license, as well as drivers with no license or unknown license type

Table 5 - 6

Passengers Killed and Injured by Age and Gender

Age of Passenger	Passengers Killed			Passengers Injured			Gender Unknown
	Total	Male	Female	Total	Male	Female	
0-4	12	5	7	1,087	534	553	0
5-9	10	9	1	1,165	573	592	0
10-14	9	5	4	1,325	583	742	0
15-19	29	19	10	2,294	931	1,363	0
20-24	23	10	13	1,638	703	935	0
25-34	30	21	9	1,827	732	1,095	0
35-44	27	10	17	1,278	464	814	0
45-54	26	12	14	1,256	366	890	0
55-64	17	11	6	864	215	649	0
65-74	9	2	7	581	136	445	0
75 & Older	22	8	14	475	124	351	0
Unknown	2	1	1	431	163	219	49
TOTAL	216	113	103	14,221	5,524	8,648	49

Section 5: – Motor Vehicle and Driver Descriptions

Table 5 - 7

Drivers and Passengers Killed and Injured by Vehicle Type

Motor Vehicle Type	Number of Drivers		Number of Passengers	
	Killed	Injured	Killed	Injured
Passenger Cars (Sedans, Convertibles, etc.)	123	17,779	71	7,071
Station Wagons	72	5,701	64	3,096
Pickup Trucks	63	4,970	26	2,229
Vans	2	245	1	178
Truck Tractor (with or without Semi-Trailer)	6	147	1	61
Concrete Mixer Trucks	0	3	0	0
Dump Trucks	0	9	0	2
Garbage Trucks	0	5	0	0
Tanker Trucks	0	3	0	0
Wrecker or Tow Trucks	0	4	0	0
Other Truck Combinations	17	1,048	15	637
School Bus	0	15	0	53
Commercial or Non-Commercial Bus	0	48	8	163
Motorcycle (two or three wheel)	113	2,298	9	179
All Terrain Vehicle or Cycle	7	119	0	39
Moped	0	18	0	6
Recreational Vehicle	0	13	0	7
Motor Home or House Car	1	14	0	5
Fire Trucks	0	1	0	3
Ambulances	0	8	1	6
Other Types Of Vehicles	1	54	1	46
Vehicle Type Unknown	38	940	19	440
TOTAL	443	33,442	216	14,221

Table 5 - 8

Drivers Killed and Injured by Age and Gender

Age of Driver	Drivers Killed				Drivers Injured			
	Total	Male	Female	Gender Unknown	Total	Male	Female	Gender Unknown
0-4	0	0	0	0	0	0	0	0
5-9	0	0	0	0	3	2	1	0
10-14	0	0	0	0	34	23	11	0
15-19	31	21	10	0	3,290	1,554	1,736	0
20-24	49	44	5	0	4,771	2,319	2,452	0
25-34	90	70	20	0	7,146	3,436	3,710	0
35-44	66	53	13	0	5,832	2,940	2,892	0
45-54	70	57	13	0	5,435	2,672	2,763	0
55-64	57	46	11	0	3,692	1,845	1,847	0
65-74	42	32	10	0	1,853	971	882	0
75 & Older	34	29	5	0	1,186	624	562	0
Unknown	4	1	0	3	200	91	34	75
TOTAL	443	353	87	3	33,442	16,477	16,890	75

Section 5: – Motor Vehicle and Driver Descriptions

Table 5 - 9

Licensed Drivers in Arizona by Age

Driver Age Group	Male Number	Percent of Male	Female Number	Percent of Female	Total Number	Percent of Total	Cumulative Percent
16	9,839	0.44%	9,400	0.43%	19,239	0.43%	0.43%
17	18,853	0.85%	17,366	0.79%	36,219	0.82%	1.25%
18	26,942	1.21%	24,684	1.12%	51,626	1.16%	2.41%
19	32,096	1.44%	30,206	1.37%	62,302	1.40%	3.82%
20	33,594	1.51%	31,800	1.44%	65,394	1.47%	5.29%
21	34,666	1.55%	33,847	1.54%	68,513	1.54%	6.84%
22	35,002	1.57%	34,166	1.55%	69,168	1.56%	8.40%
23	35,954	1.61%	35,727	1.62%	71,681	1.62%	10.02%
24	37,638	1.69%	37,965	1.72%	75,603	1.70%	30.26%
25-34	414,762	18.60%	407,369	18.48%	822,131	18.54%	30.26%
35-44	440,125	19.74%	408,914	18.55%	849,039	19.15%	49.40%
45-54	431,811	19.36%	426,700	19.35%	858,511	19.36%	68.76%
55-64	351,964	15.78%	364,504	16.53%	716,468	16.16%	84.92%
65-74	197,801	8.87%	205,002	9.30%	402,803	9.08%	94.00%
75 & older	128,806	5.78%	137,216	6.22%	266,022	6.00%	100.00%
TOTALS	2,229,853	100.00%	2,204,866	100.00%	4,434,719	100.00%	100.00%

Source: MVD - MV708 MV650653-1, Point-in-Time Driver Credential Report/All Driver Licenses by Age, Gender, and Class (page 19), dated 1/4/2010.

Table 5 - 10

Driver Involvement by Age

Driver Age Group	Number of Drivers							
	Total	Percent of Total	In Fatal Crashes	Percent of Fatal	In Injury Crashes	Percent of Injury	In PDO Crashes	Percent of PDO
15 & Under	354	0.18%	4	0.39%	120	0.19%	230	0.17%
16	2,848	1.41%	6	0.59%	884	1.39%	1,958	1.42%
17	4,587	2.27%	11	1.08%	1,389	2.18%	3,187	2.32%
18	6,466	3.20%	32	3.15%	2,060	3.24%	4,374	3.18%
19	6,338	3.13%	27	2.66%	1,976	3.11%	4,335	3.15%
20	5,830	2.88%	14	1.38%	1,894	2.98%	3,922	2.85%
21	5,629	2.78%	23	2.27%	1,833	2.88%	3,773	2.74%
22	5,281	2.61%	27	2.66%	1,693	2.66%	3,561	2.59%
23	5,169	2.56%	28	2.76%	1,565	2.46%	3,576	2.60%
24	4,890	2.42%	23	2.27%	1,617	2.54%	3,250	2.36%
25-34	41,075	20.31%	205	20.20%	13,228	20.80%	27,642	20.08%
35-44	33,586	16.60%	162	15.96%	10,904	17.15%	22,520	16.36%
45-54	29,706	14.69%	150	14.78%	9,774	15.37%	19,782	14.37%
55-64	20,014	9.89%	111	10.94%	6,641	10.44%	13,262	9.63%
65-74	10,121	5.00%	70	6.90%	3,300	5.19%	6,751	4.90%
75 & Older	6,500	3.21%	55	5.42%	2,153	3.39%	4,292	3.12%
Unknown	13,884	6.86%	67	6.60%	2,567	4.04%	11,250	8.17%
TOTAL	202,278	100.00%	1,015	100.00%	63,598	100.00%	137,665	100.00%

Section 5: – Motor Vehicle and Driver Descriptions

Table 5 - 11

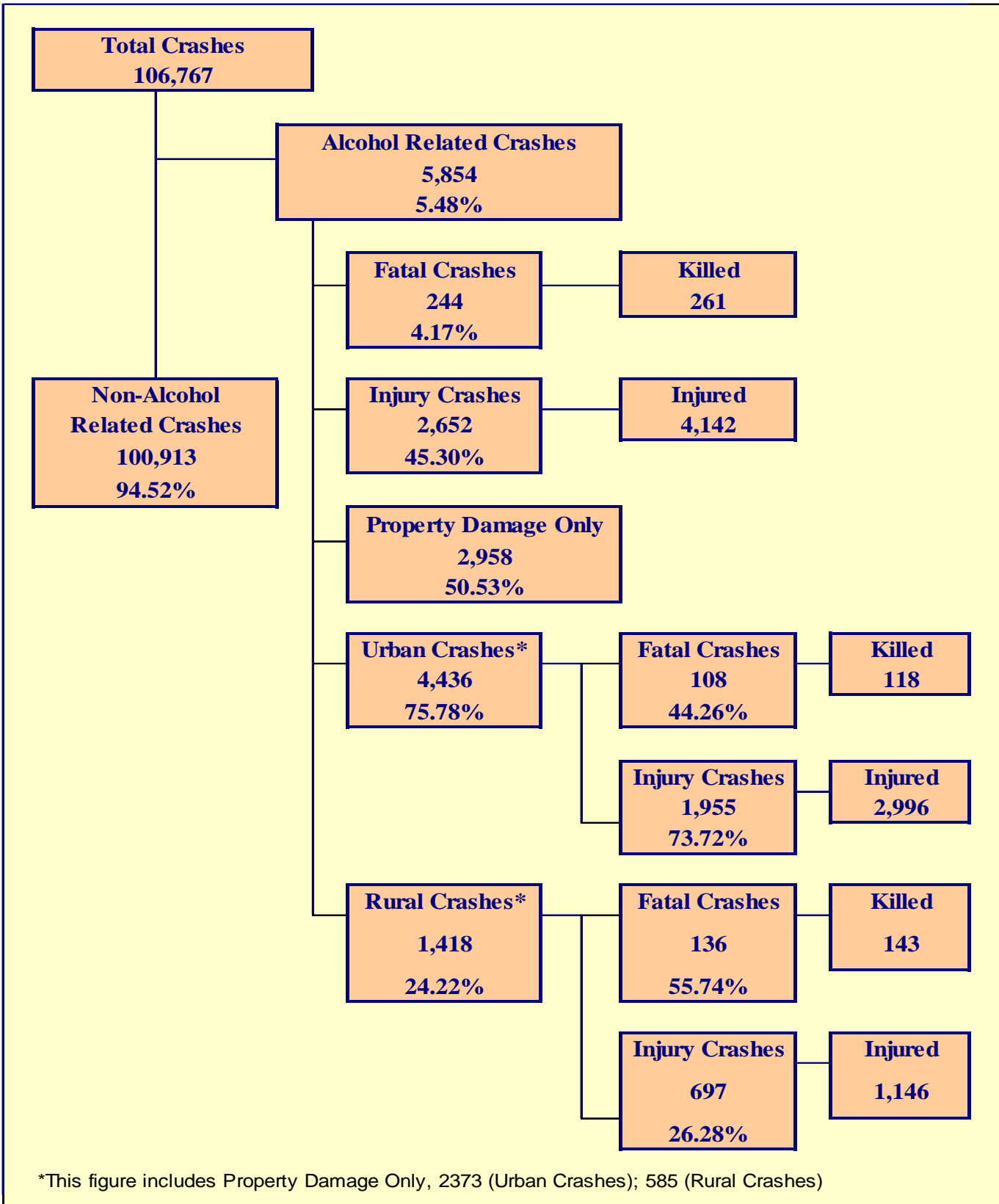
Driver Errors

Type of Violation or Behavior	Number of Drivers							
	Total	Percent of Total	In Fatal Crashes	Percent of Fatal	In Injury Crashes	Percent of Injury	In PDO Crashes	Percent of PDO
No Improper Action	96,494	47.70%	353	34.78%	30,751	48.35%	65,390	47.50%
Speed too Fast for Conditions	33,845	16.73%	158	15.57%	11,001	17.30%	22,686	16.48%
Exceeded Lawful Speed	1,298	0.64%	51	5.02%	559	0.88%	688	0.50%
Failed to Yield Right-Of-Way	18,531	9.16%	58	5.71%	7,146	11.24%	11,327	8.23%
Followed Too Closely	5,502	2.72%	4	0.39%	1,455	2.29%	4,043	2.94%
Ran Stop Sign	1,308	0.65%	6	0.59%	525	0.83%	777	0.56%
Disregarded Traffic Signal	4,948	2.45%	30	2.96%	2,327	3.66%	2,591	1.88%
Made Improper Turn	2,879	1.42%	3	0.30%	604	0.95%	2,272	1.65%
Drove in Opposing Lane	1,317	0.65%	47	4.63%	506	0.80%	764	0.55%
Knowingly Operated with Faulty or Missing Equipment	281	0.14%	4	0.39%	85	0.13%	192	0.14%
Required Motorcycle Safety Equipment Not Used	27	0.01%	0	0.00%	21	0.03%	6	0.00%
Passed in No-Passing Zone	109	0.05%	1	0.10%	33	0.05%	75	0.05%
Unsafe Lane Change	5,557	2.75%	13	1.28%	819	1.29%	4,725	3.43%
Failed to Keep in Proper Lane	2,801	1.38%	38	3.74%	779	1.22%	1,984	1.44%
Disregarded Pavement Markings	198	0.10%	2	0.20%	47	0.07%	149	0.11%
Other Unsafe Passing	653	0.32%	3	0.30%	128	0.20%	522	0.38%
Inattention/Distraction	11,117	5.50%	28	2.76%	2,896	4.55%	8,193	5.95%
Electronic Communications Device	189	0.09%	1	0.10%	69	0.11%	119	0.09%
Other	4,140	2.05%	32	3.15%	1,007	1.58%	3,101	2.25%
Unknown	11,084	5.48%	183	18.03%	2,840	4.47%	8,061	5.86%
TOTAL	202,278	100.00%	1,015	100.00%	63,598	100.00%	137,665	100.00%

Table 5 - 12

Driver Physical Condition

Type of Condition	Number of Drivers							
	Total	Percent of Total	In Fatal Crashes	Percent of Fatal	In Injury Crashes	Percent of Injury	In PDO Crashes	Percent of PDO
No Apparent Influence	176,758	87.38%	524	51.63%	55,645	87.49%	120,589	87.60%
Had Been Drinking	5,622	2.78%	197	19.41%	2,468	3.88%	2,957	2.15%
Appeared to be Under the Influence of Drugs*	548	0.27%	36	3.55%	253	0.40%	259	0.19%
Medications	333	0.16%	7	0.69%	159	0.25%	167	0.12%
Illness	860	0.43%	6	0.59%	451	0.71%	403	0.29%
Physical Impairment	201	0.10%	4	0.39%	86	0.14%	111	0.08%
Fell Asleep or Fatigued	1,445	0.71%	15	1.48%	599	0.94%	831	0.60%
Other	1,374	0.68%	10	0.99%	387	0.61%	977	0.71%
Unknown	15,137	7.48%	216	21.28%	3,550	5.58%	11,371	8.26%
TOTAL	202,278	100.00%	1,015	100.00%	63,598	100.00%	137,665	100.00%
*Illegal drugs or narcotics								



The statistics in the Alcohol Related section represent those crashes where the investigating officer indicated that a driver, pedestrian, or pedalcyclist had been drinking an alcoholic beverage and may or may not be substantiated by a blood or breath test. No assumption is to be made that the person was legally intoxicated (blood alcohol content of 0.08% or higher) at the time of the crash.

Table 6 - 1

Economic Loss Due to Alcohol Related Crashes in Arizona for 2009

Fatalities	\$346,086,000
Incapacitating Injuries	\$54,698,112
Non-Incapacitating Injuries	\$38,557,224
Possible Injuries	\$20,199,060
Property Damage Only	\$25,042,428
TOTAL	\$484,582,824

Refer to note on Page 4 for Economic Loss Estimates

Table 6 - 2

Alcohol Related Crash History

Year	Alcohol Related Crashes	Percent of all Crashes	Persons Killed	Percent of all Fatalities	Persons Injured	Percent of all Injuries
2005	8,055	5.73%	278	23.30%	6,165	8.67%
2006	8,218	5.73%	385	29.59%	5,956	8.51%
2007	7,938	5.62%	397	37.07%	5,532	8.37%
2008	6,878	5.71%	355	37.85%	4,834	8.55%
2009	5,854	5.48%	261	32.38%	4,142	8.18%

Table 6 - 3

Manner of Collision in Alcohol Related Crashes

Manner of Collision Type	Number of Crashes							
	Total	Percent of All Crashes	Fatal	Percent of Fatal Crashes	Injury	Percent of Injury Crashes	PDO	Percent of PDO Crashes
Angle	534	16.19%	18	14.06%	313	20.04%	203	12.62%
Left Turn	228	6.91%	7	5.47%	121	7.75%	100	6.22%
Read End	1,335	40.48%	17	13.28%	599	38.35%	719	44.71%
Head-On	265	8.04%	20	15.63%	149	9.54%	96	5.97%
Sideswipe (same)	378	11.46%	3	2.34%	118	7.55%	257	15.98%
Sideswipe (opposite)	150	4.55%	2	1.56%	46	2.94%	102	6.34%
Rear to Side	34	1.03%	0	0.00%	4	0.26%	30	1.87%
Rear to Rear	15	0.45%	0	0.00%	4	0.26%	11	0.68%
Other	334	10.13%	60	46.88%	197	12.61%	77	4.79%
Unknown	25	0.76%	1	0.78%	11	0.70%	13	0.81%
TOTAL	3,298	100.00%	128	100.00%	1,562	100.00%	1,608	100.00%

Section 6: – Alcohol Related Crashes

Table 6 - 4

Alcohol Related Crashes by First Harmful Event

First Harmful Event Type	Number of Crashes				Number of Persons	
	Total	Fatal	Injury	PDO	Killed	Injured
Collision with Motor Vehicle in Transport	2,616	55	1,201	1,360	63	2,235
Overturning	367	49	253	65	53	376
Collision with Pedestrian	231	58	159	14	58	176
Collision with Pedalcyclist	63	10	48	5	10	50
Collision with Animal	9	1	1	7	1	2
Collision with Fixed Object	2,016	66	782	1,168	71	1,019
Collision with Non-fixed Object*	341	2	111	228	2	156
Vehicle Fire or Explosion	4	0	3	1	0	3
Other Non-collision**	75	3	38	34	3	47
Unknown	132	0	56	76	0	78
TOTAL	5,854	244	2,652	2,958	261	4,142
*Includes Collision with Parked Vehicles, Trains, Railway Vehicles, and Work Zone Equipment						
**Includes Vehicle Immersion, Jackknife, and Cargo Loss or Shift						

Table 6 - 5

Alcohol Related Crashes by Vehicle Type

Motor Vehicle Type	Number of Vehicles				
	Total	Percent of Total	In Fatal Crashes	In Injury Crashes	In PDO Crashes
Passenger Cars (Sedans, Convertibles, etc.)	2,680	47.670%	66	1,126	1,488
Station Wagons	923	16.418%	30	385	508
Pickup Trucks	1,349	23.995%	40	598	711
Vans	38	0.676%	2	15	21
Truck Tractor (with or without Semi-Trailer)	3	0.053%	0	0	3
Concrete Mixer Trucks	0	0.000%	0	0	0
Dump Trucks	1	0.018%	0	1	0
Garbage Trucks	0	0.000%	0	0	0
Tanker Trucks	1	0.018%	0	0	1
Wrecker or Tow Trucks	0	0.000%	0	0	0
Other Truck Combinations	132	2.348%	4	56	72
School Bus	1	0.018%	0	0	1
Commercial or Non-Commercial Bus	3	0.053%	0	1	2
Motorcycle (two or three wheel)	221	3.931%	36	166	19
All Terrain Vehicle or Cycle	23	0.409%	4	17	2
Moped	2	0.036%	0	2	0
Recreational Vehicle	5	0.089%	0	2	3
Motor Home or House Car	3	0.053%	0	2	1
Fire Trucks	0	0.000%	0	0	0
Ambulances	0	0.000%	0	0	0
Other Types Of Vehicles	9	0.160%	2	6	1
Vehicle Type Unknown	228	4.055%	13	91	124
TOTAL	5,622	100.00%	197	2,468	2,957

Table 6 - 6

Lighting Conditions in Alcohol Related Crashes

Type of Lighting Conditions	Number of Crashes				Number of Persons	
	Total	Fatal	Injury	PDO	Killed	Injured
Daylight	1,705	65	797	843	75	1,251
Dawn	125	4	66	55	4	100
Dusk	175	8	87	80	8	139
Dark - Lighted	2,678	67	1,156	1,455	71	1,777
Dark - Not Lighted	975	72	469	434	75	750
Dark - Unknown Lighting	196	28	77	91	28	125
TOTAL	5,854	244	2,652	2,958	261	4,142

Table 6 - 7

Road Surface Conditions in Alcohol Related Crashes

Type of Road Surface Condition	Number of Drivers				Number of Persons	
	Total	In Fatal Crashes	In Injury Crashes	In PDO Crashes	Killed	Injured
Dry	5,347	174	2,362	2,811	228	3,953
Wet	172	5	68	99	7	121
Snow	4	0	1	3	0	7
Slush	3	0	0	3	0	0
Ice/Frost	3	0	2	1	0	6
Water (standing or moving)	2	0	1	1	0	1
Sand	0	0	0	0	0	0
Mud, Dirt, Gravel	58	3	28	27	4	45
Oil	0	0	0	0	0	0
Other	7	1	4	2	1	5
Unknown	26	14	2	10	21	4
TOTAL	5,622	197	2,468	2,957	261	4,142

Table 6 - 8

Gender of Drivers Involved in Alcohol Related Crashes

Gender of Driver	Number of Drivers							
	Total	Percent of Total	In Fatal Crashes	Percent of Fatal	In Injury Crashes	Percent of Injury	In PDO Crashes	Percent of PDO
Male	4,195	74.62%	152	77.16%	1,879	76.13%	2,164	73.18%
Female	1,370	24.37%	42	21.32%	570	23.10%	758	25.63%
Unknown	57	1.01%	3	1.52%	19	0.77%	35	1.18%
TOTAL	5,622	100.00%	197	100.00%	2,468	100.00%	2,957	100.00%

In total crashes across the state, 53.31% of the drivers were males. When alcohol was involved, males accounted for 74.62% of the drivers.

Section 6: – Alcohol Related Crashes

Table 6 - 9

Driver Involvement by Age in Alcohol Related Crashes

Driver Age Group	Number of Drivers							
	Total	Percent of Total	In Fatal Crashes	Percent of Fatal	In Injury Crashes	Percent of Injury	In PDO Crashes	Percent of PDO
15 & Under	3	0.05%	0	0.00%	1	0.04%	2	0.07%
16	26	0.46%	0	0.00%	15	0.61%	11	0.37%
17	64	1.14%	3	1.52%	28	1.13%	33	1.12%
18	165	2.93%	4	2.03%	70	2.84%	91	3.08%
19	164	2.92%	5	2.54%	68	2.76%	91	3.08%
20	207	3.68%	3	1.52%	82	3.32%	122	4.13%
21	303	5.39%	8	4.06%	142	5.75%	153	5.17%
22	255	4.54%	8	4.06%	108	4.38%	139	4.70%
23	238	4.23%	8	4.06%	101	4.09%	129	4.36%
24	227	4.04%	12	6.09%	102	4.13%	113	3.82%
25-34	1,570	27.93%	52	26.40%	681	27.59%	837	28.31%
35-44	985	17.52%	44	22.34%	441	17.87%	500	16.91%
45-54	807	14.35%	30	15.23%	370	14.99%	407	13.76%
55-64	384	6.83%	9	4.57%	169	6.85%	206	6.97%
65-74	97	1.73%	6	3.05%	42	1.70%	49	1.66%
75 & Older	35	0.62%	0	0.00%	18	0.73%	17	0.57%
Unknown	92	1.64%	5	2.54%	30	1.22%	57	1.93%
TOTAL	5,622	100.00%	197	100.00%	2,468	100.00%	2,957	100.00%

Table 6 - 10

When Alcohol Related Crashes Occurred in 2009

Time of Day	Total	Weekday	Weekend*
Daytime**	1,640	1,003	637
Nighttime	4,214	1,700	2,514
Total	5,854	2,703	3,151
*Weekend begins at 6:00 p.m. on Friday and continues through 6:00 a.m. Monday. All other times and days are considered Weekdays.			
**Day time refers to the hours between 6:00 a.m. and 6:00 p.m.			

Table 6 - 11

Safety Device Usage for Drinking Drivers

Severity of Injury	Safety Device Not Used	Lap Belt	Lap & Shoulder Belt	Protective Helmet	Other	Unknown	Totals
No Injury	258	61	2,078	8	8	1,121	3,534
Unknown Injury	6	1	9	0	0	150	166
Possible Injury	97	11	267	5	5	179	564
Non-Incapacitating Injury	227	8	346	18	1	248	848
Incapacitating Injury	165	3	84	10	0	109	371
Fatal Injury	90	0	25	7	1	16	139
TOTALS	843	84	2,809	48	15	1,823	5,622

Table 6 - 12

Persons Killed and Injured in Alcohol Related Crashes

Age of Victim	Persons Killed			Persons Injured			
	Total	Male	Female	Total	Male	Female	Gender Unknown
0-4	1	1	0	65	33	32	0
5-9	1	1	0	65	28	37	0
10-14	0	0	0	65	32	33	0
15-19	17	12	5	422	251	171	0
20-24	49	39	10	827	545	282	0
25-34	59	41	18	966	637	329	0
35-44	57	45	12	686	457	229	0
45-54	39	32	7	610	391	219	0
55-64	24	21	3	250	166	84	0
65-74	11	9	2	95	51	44	0
75 & Older	3	2	1	41	26	15	0
Unknown	0	0	0	50	32	11	7
TOTAL	261	203	58	4,142	2,649	1,486	7

Table 6 - 13

Alcohol Related Crashes by County

County	Number of Crashes				Number of Persons	
	Total	Fatal	Injury	PDO	Killed	Injured
Apache	59	7	35	17	7	70
Cochise	95	8	33	54	8	44
Coconino	150	13	65	72	13	103
Gila	81	6	42	33	6	57
Graham	31	5	12	14	6	23
Greenlee	6	1	4	1	1	4
La Paz	15	0	8	7	0	12
Maricopa	3,601	104	1,594	1,903	112	2,418
Mohave	240	13	114	113	13	175
Navajo	103	11	50	42	12	100
Pima	822	33	408	381	38	662
Pinal	254	22	113	119	23	191
Santa Cruz	27	2	11	14	2	15
Yavapai	200	11	87	102	11	132
Yuma	170	8	76	86	9	136
TOTAL	5,854	244	2,652	2,958	261	4,142

Section 6: – Alcohol Related Crashes

Chart 6 - 1

All Alcohol Related Crashes vs. Fatal Alcohol Related Crashes by Day of Week

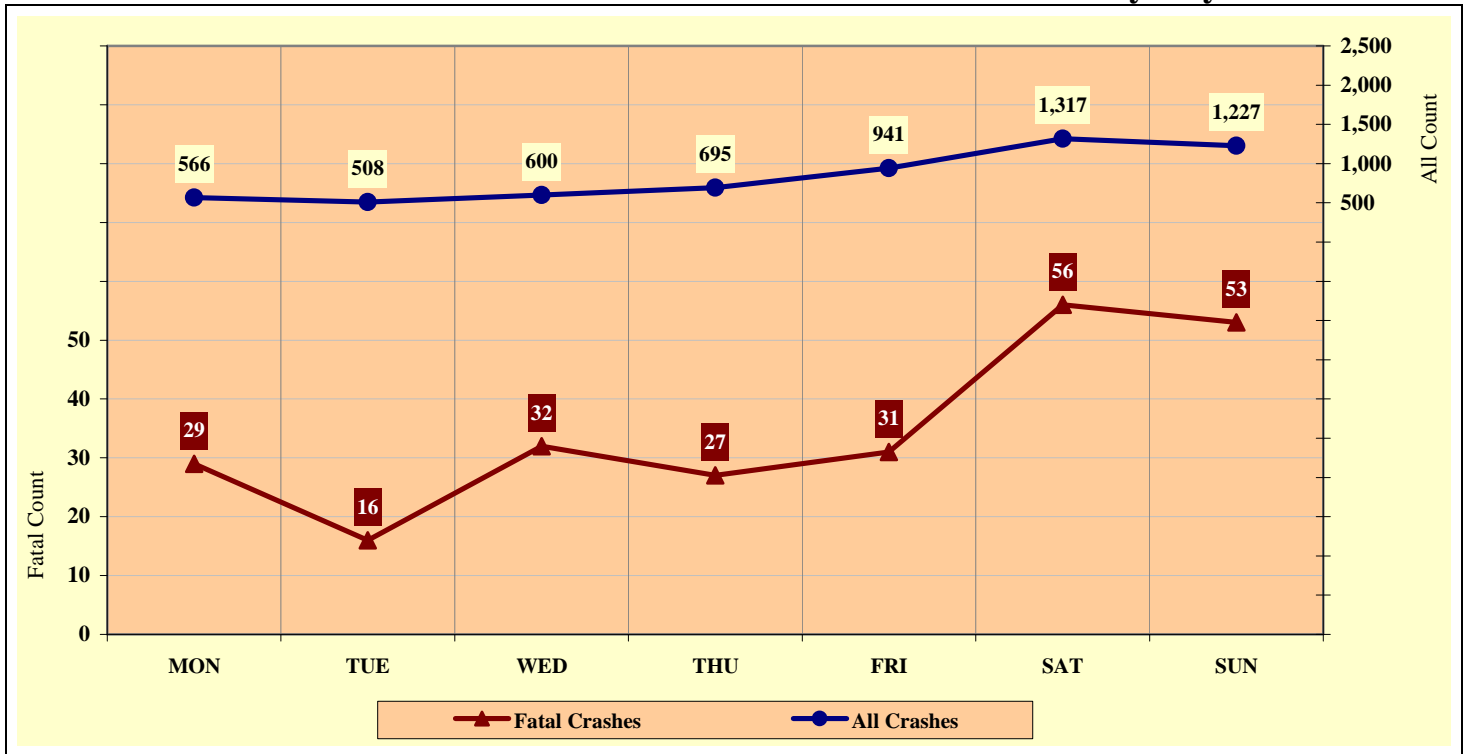


Chart 6 - 2

All Alcohol Related Crashes vs. Fatal Alcohol Related Crashes by Month

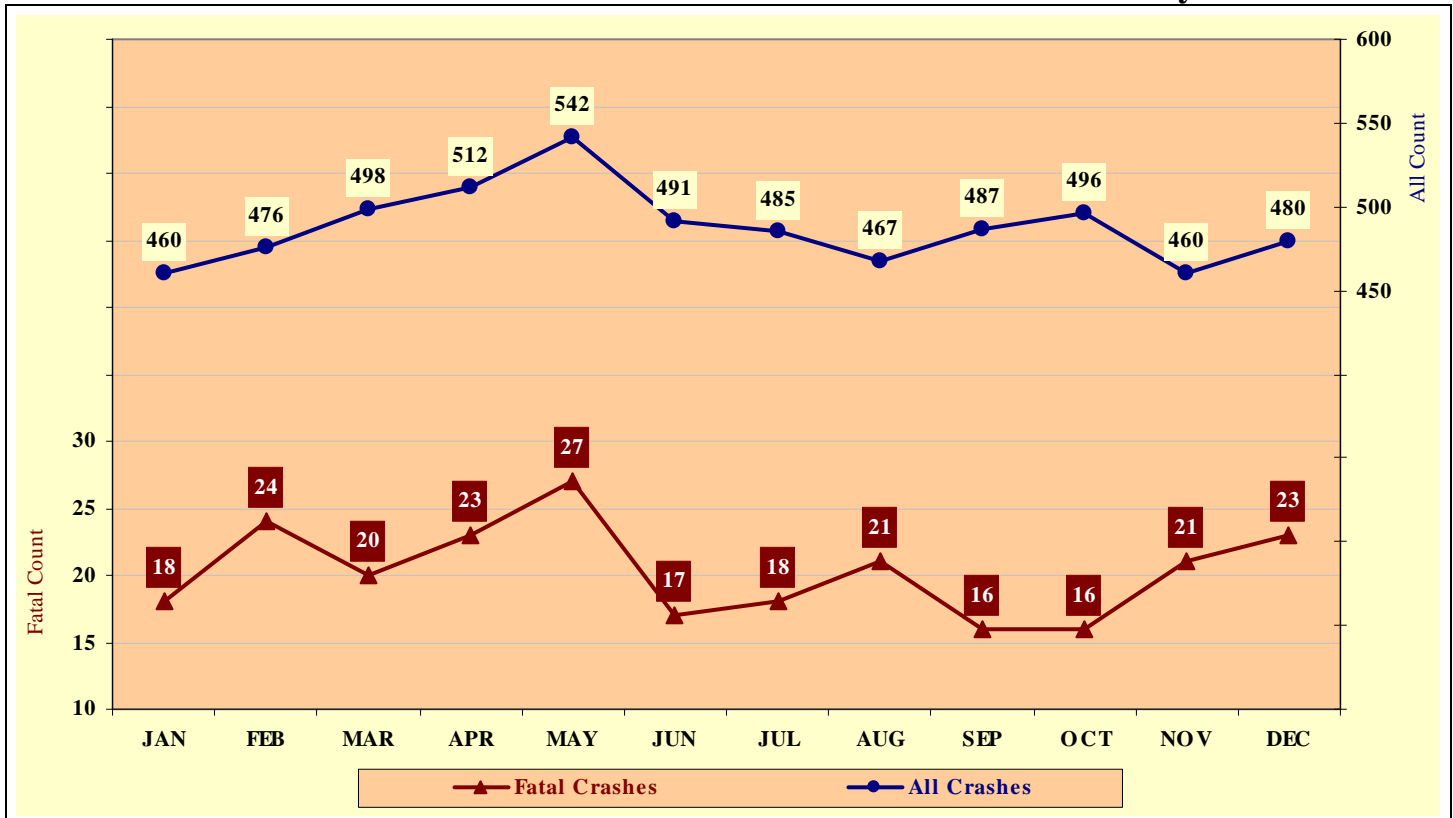


Chart 6 - 3

All Alcohol Related Crashes vs. Fatal Alcohol Related Crashes - Weekdays

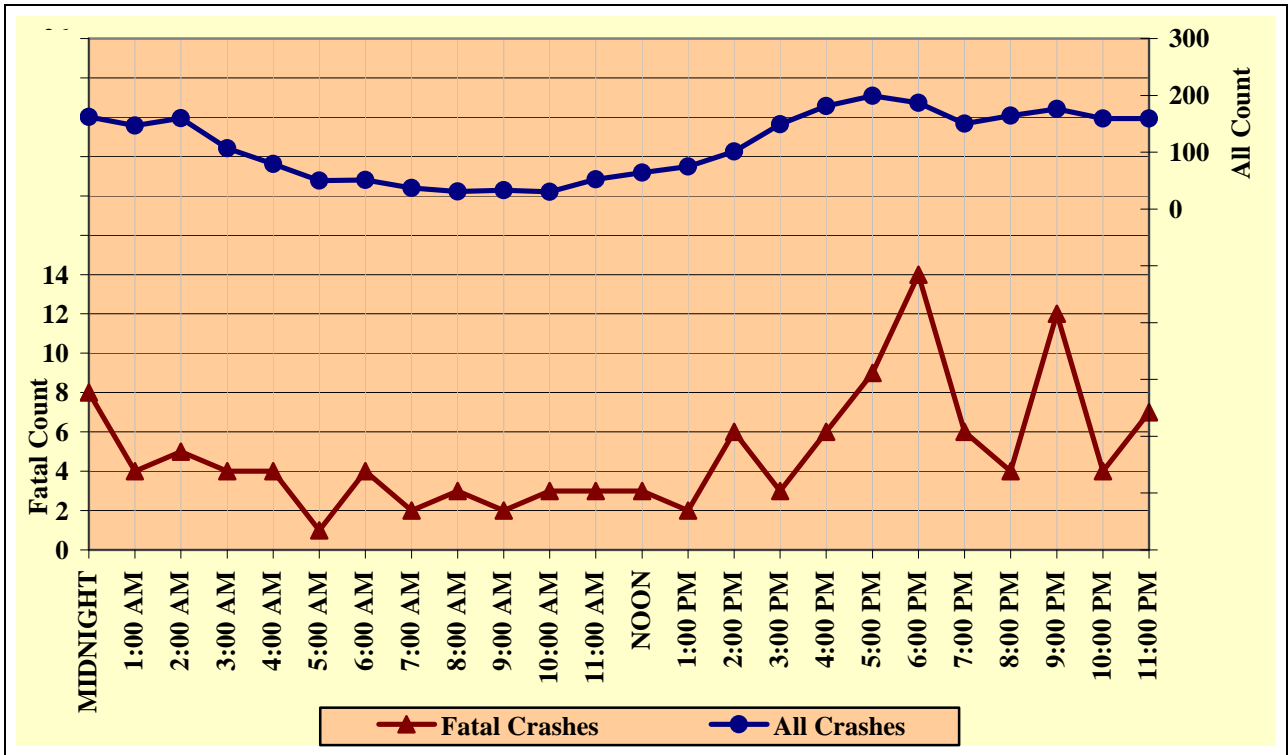
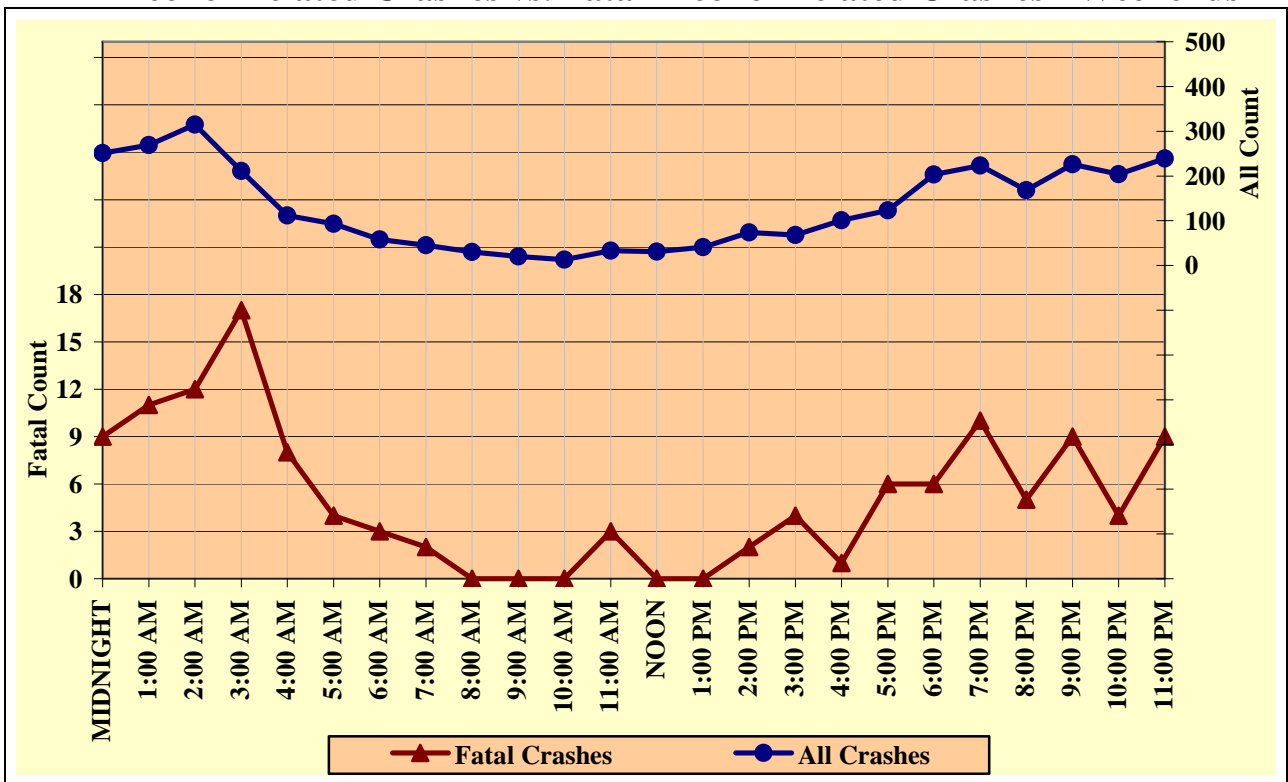


Chart 6 - 4

All Alcohol Related Crashes vs. Fatal Alcohol Related Crashes - Weekends



Section 6: – Alcohol Related Crashes

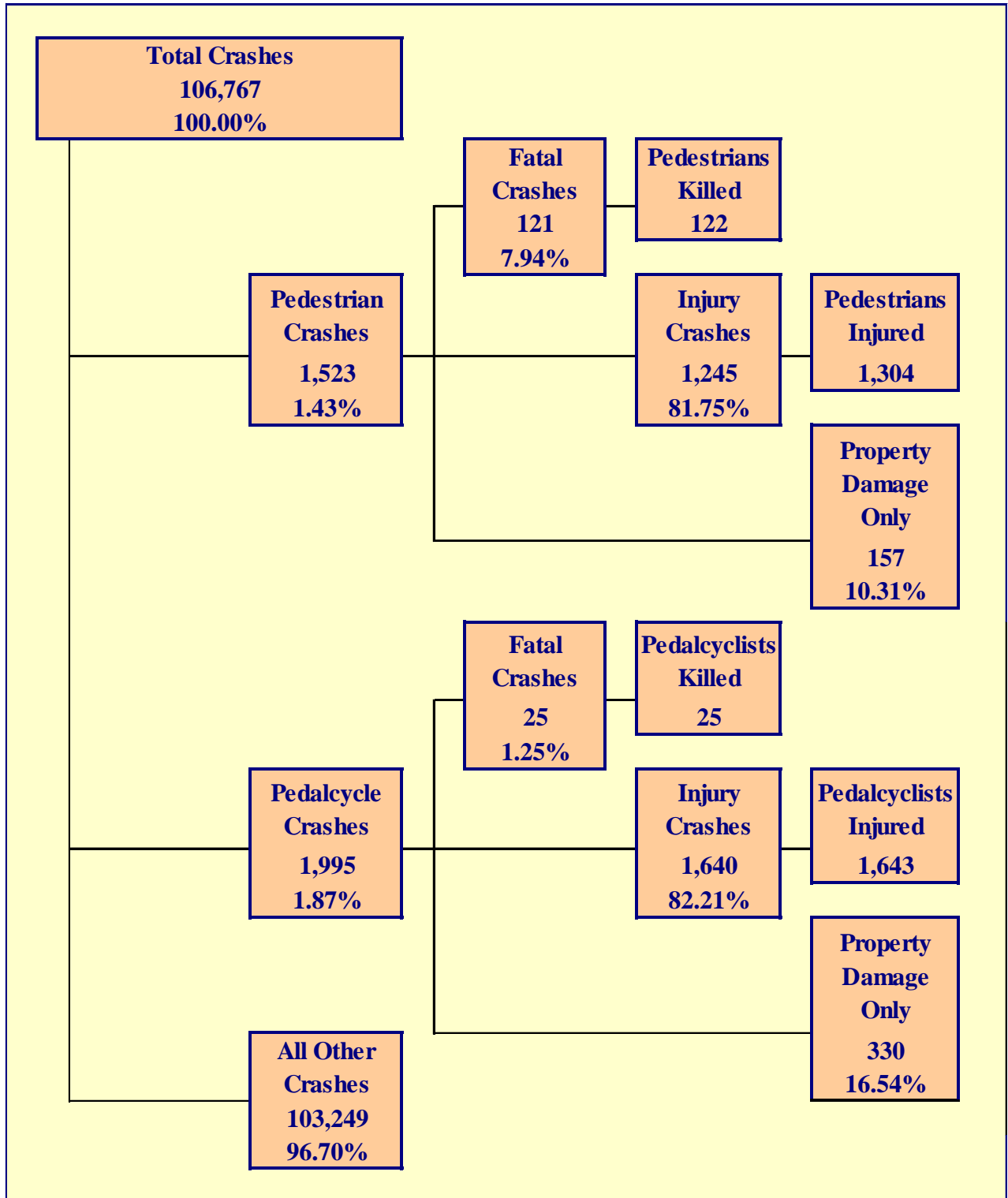
Table 6 - 14

Alcohol Related Crashes by Hour and Day of Week

Hour Beginning	Total Crashes		Monday		Tuesday		Wednesday		Thursday		Friday		Saturday		Sunday		Weekdays		Weekends	
	All	Fatal	All	Fatal	All	Fatal	All	Fatal	All	Fatal	All	Fatal	All	Fatal	All	Fatal	All	Fatal	All	Fatal
MIDNIGHT	413	17	48	2	30	3	34	2	46	0	52	3	105	2	98	5	162	8	251	9
1:00 AM	416	15	29	1	16	0	40	1	37	0	54	3	127	7	113	3	147	4	269	11
2:00 AM	475	17	32	2	28	0	26	0	42	1	64	4	142	7	141	3	160	5	315	12
3:00 AM	318	21	21	1	14	0	26	0	28	2	39	2	92	6	98	10	107	4	211	17
4:00 AM	191	12	9	0	12	1	21	1	25	0	21	2	52	5	51	3	79	4	112	8
5:00 AM	143	5	12	1	6	0	12	0	15	0	17	1	26	1	55	2	50	1	93	4
6:00 AM	109	7	10	0	8	0	7	1	14	3	12	0	32	2	26	1	51	4	58	3
7:00 AM	82	4	6	0	6	0	8	0	6	1	11	1	21	0	24	2	37	2	45	2
8:00 AM	61	3	6	1	4	0	5	1	5	0	11	1	14	0	16	0	31	3	30	0
9:00 AM	53	2	5	0	6	1	5	0	9	0	8	1	11	0	9	0	33	2	20	0
10:00 AM	43	3	5	0	9	1	5	0	6	2	5	0	9	0	4	0	30	3	13	0
11:00 AM	85	6	9	0	9	1	7	2	10	0	17	0	20	3	13	0	52	3	33	3
NOON	95	3	15	2	10	0	8	0	16	1	15	0	18	0	13	0	64	3	31	0
1:00 PM	116	2	14	1	9	0	19	1	21	0	12	0	29	0	12	0	75	2	41	0
2:00 PM	175	8	28	2	18	0	18	1	16	3	21	0	48	2	26	0	101	6	74	2
3:00 PM	217	7	33	1	27	1	25	0	33	1	31	0	29	1	39	3	149	3	68	4
4:00 PM	282	7	37	2	40	1	34	0	29	0	41	3	48	1	53	0	181	6	101	1
5:00 PM	322	15	32	1	36	1	40	4	37	2	54	1	61	1	62	5	199	9	123	6
6:00 PM	390	20	40	2	48	2	41	6	58	4	70	0	67	3	66	3	187	14	203	6
7:00 PM	373	16	32	1	32	2	43	2	43	1	70	2	88	6	65	2	150	6	223	10
8:00 PM	332	9	36	2	30	0	43	1	55	1	59	2	50	1	59	2	164	4	168	5
9:00 PM	402	21	38	4	37	1	52	6	49	1	79	3	68	2	79	4	176	12	226	9
10:00 PM	363	8	40	0	41	1	39	1	39	2	84	0	69	3	51	1	159	4	204	4
11:00 PM	398	16	29	3	32	0	42	2	56	2	94	2	91	3	54	4	159	7	239	9
TOTAL	5,854	244	566	29	508	16	600	32	695	27	941	31	1,317	56	1,227	53	2,703	119	3,151	125

Crashes during Weekends accounted for 53.83% of all Alcohol Related crashes and 51.23% of Alcohol Related Fatal Crashes.

Crashes during Weekdays accounted for 46.17% of all Alcohol Related crashes and 48.77% of Alcohol Related Fatal Crashes.



Section 7: – Pedestrian and Pedalcyclist Crashes

Table 7 - 1

Pedestrians Killed and Injured By Age and Gender

Age Group	Pedestrians Killed			Pedestrians Injured			
	Total	Male	Female	Total	Male	Female	Gender Unknown
0-4	6	4	2	38	27	11	0
5-9	1	1	0	55	36	19	0
10-14	3	3	0	117	80	37	0
15-19	4	3	1	190	118	72	0
20-24	8	6	2	139	87	52	0
25-34	19	14	5	168	110	58	0
35-44	23	21	2	172	97	75	0
45-54	15	10	5	168	107	61	0
55-64	24	15	9	102	66	36	0
65-74	9	7	2	73	48	25	0
75 & Older	10	6	4	35	22	13	0
Unknown	0	0	0	47	24	18	5
TOTAL	122	90	32	1,304	822	477	5

Table 7 - 2

Pedestrian Crashes by Geographic Location

Category	Total	Urban	Percent of Total	Rural	Percent of Total
Total Crashes	1,523	1,343	88.18%	180	11.82%
Fatal Crashes	121	77	63.64%	44	36.36%
Injury Crashes	1,245	1,121	90.04%	124	9.96%
PDO Crashes	157	145	92.36%	12	7.64%
Pedestrians Killed	122	78	63.93%	44	36.07%
Pedestrians Injured	1,304	1,169	89.65%	135	10.35%

Table 7 - 3

Pedestrian Crash History

Year	Pedestrian Crashes	Percent of all Crashes	Pedestrians Killed	Percent of all Fatalities	Pedestrians Injured	Percent of all Injuries
2005	1,665	1.18%	166	13.91%	1,483	2.09%
2006	1,660	1.16%	172	13.22%	1,470	2.10%
2007	1,737	1.23%	157	14.66%	1,542	2.33%
2008	1,581	1.31%	125	13.33%	1,432	2.53%
2009	1,523	1.43%	122	15.14%	1,304	2.58%

Table 7 - 4

Pedestrians Killed by Age and Action

Pedestrian Action	Total	Age Group of Pedestrian											
		0-4	5-9	10-14	15-19	20-24	25-34	35-44	45-54	55-64	65-74	75 & Older	Unknown
Crossing Road	61	0	0	1	4	2	7	10	9	16	6	6	0
Walking With Traffic	10	0	0	1	0	3	2	2	1	1	0	0	0
Walking Against Traffic	7	1	0	0	0	0	2	2	1	1	0	0	0
Standing	7	1	0	0	0	0	1	2	1	2	0	0	0
Lying	5	0	0	1	0	1	1	1	1	0	0	0	0
Getting on/off Vehicle	1	0	0	0	0	0	0	1	0	0	0	0	0
Working on/pushing Veh	1	0	0	0	0	0	0	0	0	1	0	0	0
Working on Road	0	0	0	0	0	0	0	0	0	0	0	0	0
Other	8	1	0	0	0	1	2	1	1	1	0	1	0
Unknown	22	3	1	0	0	1	4	4	1	2	3	3	0
TOTAL	122	6	1	3	4	8	19	23	15	24	9	10	0

Table 7 - 5

Pedestrians Injured by Age and Action

Pedestrian Action	Total	Age Group of Pedestrian											
		0-4	5-9	10-14	15-19	20-24	25-34	35-44	45-54	55-64	65-74	75 & Older	Unknown
Crossing Road	735	22	38	69	111	66	89	95	97	62	38	20	28
Walking With Traffic	63	0	0	4	15	13	9	9	7	3	2	1	0
Walking Against Traffic	79	3	3	7	14	3	14	16	8	5	3	1	2
Standing	69	0	1	6	8	8	9	18	10	5	3	0	1
Lying	7	0	0	2	1	2	0	0	1	0	0	1	0
Getting on/off Vehicle	3	0	0	0	0	2	0	0	0	0	0	0	1
Working on/pushing Veh	7	0	0	0	2	1	0	3	0	0	1	0	0
Working on Road	2	0	0	0	0	0	0	1	1	0	0	0	0
Other	273	8	8	28	35	36	37	25	37	19	23	10	7
Unknown	66	5	5	1	4	8	10	5	7	8	3	2	8
TOTAL	1,304	38	55	117	190	139	168	172	168	102	73	35	47

Table 7 - 6

Pedestrian Physical Condition in Motor Vehicle Crashes

Type of Condition	Number of Pedestrians							
	Total	Percent of Total	In Fatal Crashes	Percent of Fatal	In Injury Crashes	Percent of Injury	In PDO Crashes	Percent of PDO
No Apparent Influence	1,139	70.61%	40	29.63%	972	74.03%	127	76.97%
Had Been Drinking	231	14.32%	50	37.04%	167	12.72%	14	8.48%
Appeared to be Under the Influence of Drugs*	12	0.74%	5	3.70%	7	0.53%	0	0.00%
Medications	1	0.06%	0	0.00%	1	0.08%	0	0.00%
Illness	4	0.25%	0	0.00%	4	0.30%	0	0.00%
Physical Impairment	12	0.74%	1	0.74%	9	0.69%	2	1.21%
Fell Asleep or Fatigued	0	0.00%	0	0.00%	0	0.00%	0	0.00%
Other	16	0.99%	1	0.74%	15	1.14%	0	0.00%
Unknown	198	12.28%	38	28.15%	138	10.51%	22	13.33%
TOTAL	1,613	100.00%	135	100.00%	1,313	100.00%	165	100.00%

*Illegal drugs or narcotics

Section 7: – Pedestrian and Pedalcyclist Crashes

Table 7 - 7

Lighting Conditions in Pedestrian Crashes

Type of Lighting Conditions	Number of Crashes			
	Total	Fatal	Injury	PDO
Daylight	857	31	731	95
Dawn	27	2	24	1
Dusk	56	4	42	10
Dark - Lighted	361	30	295	36
Dark - Not Lighted	151	32	107	12
Dark - Unknown Lighting	71	22	46	3
TOTAL	1,523	121	1,245	157

Table 7 - 8

Weather Conditions in Pedestrian Crashes

Type of Weather Conditions	Number of Crashes			
	Total	Fatal	Injury	PDO
Clear	1,353	93	1,113	147
Cloudy	104	10	89	5
Sleet/Hail	0	0	0	0
Rain	30	2	27	1
Snow	2	0	2	0
Severe Crosswinds	0	0	0	0
Blowing Sand, Soil, Dirt	2	0	2	0
Fog, Smog, Smoke	1	0	1	0
Blowing Snow	0	0	0	0
Other	1	0	1	0
Unknown	30	16	10	4
TOTAL	1,523	121	1,245	157

Table 7 - 9

Pedalcyclists Killed and Injured by Age and Gender

Age Group	Pedalcyclists Killed			Pedalcyclists Injured			
	Total	Male	Female	Total	Male	Female	Gender Unknown
0-4	0	0	0	4	3	1	0
5-9	0	0	0	66	55	11	0
10-14	2	1	1	199	160	39	0
15-19	0	0	0	271	210	61	0
20-24	3	3	0	221	153	68	0
25-34	2	2	0	230	170	60	0
35-44	6	4	2	213	165	48	0
45-54	4	4	0	240	196	44	0
55-64	5	5	0	121	101	20	0
65-74	1	0	1	35	32	3	0
75 & Older	2	2	0	15	15	0	0
Unknown	0	0	0	28	18	4	6
TOTAL	25	21	4	1,643	1,278	359	6

Table 7 - 10

Pedalcycle Crashes by Geographic Location

Category	Total	Urban	Percent of Total	Rural	Percent of Total
Total Crashes	1,995	1,838	92.13%	157	7.87%
Fatal Crashes	25	17	68.00%	8	32.00%
Injury Crashes	1,640	1,526	93.05%	114	6.95%
PDO Crashes	330	295	89.39%	35	10.61%
Pedalcyclists Killed	25	17	68.00%	8	32.00%
Pedalcyclists Injured	1,643	1,525	92.82%	118	7.18%

Table 7 - 11

Pedalcycle Crash History

Year	Pedalcycle Crashes	Percent of all Crashes	Pedalcyclists Killed	Percent of all Fatalities	Pedalcyclists Injured	Percent of all Injuries
2005	2,042	1.45%	36	3.02%	1,727	2.43%
2006	1,886	1.31%	29	2.23%	1,559	2.23%
2007	1,922	1.36%	21	1.96%	1,606	2.43%
2008	2,006	1.66%	19	2.03%	1,697	3.00%
2009	1,995	1.87%	25	3.10%	1,643	3.25%

Table 7 - 12

Lighting Conditions in Pedalcyclist Crashes

Type of Lighting Conditions	Number of Crashes			
	Total	Fatal	Injury	PDO
Daylight	1,547	12	1,277	258
Dawn	36	2	33	1
Dusk	82	1	70	11
Dark - Lighted	263	6	205	52
Dark - Not Lighted	42	3	34	5
Dark - Unknown Lighting	25	1	21	3
TOTAL	1,995	25	1,640	330

Table 7 - 13

Weather Conditions in Pedalcyclist Crashes

Type of Weather Conditions	Number of Crashes			
	Total	Fatal	Injury	PDO
Clear	1,808	22	1,499	287
Cloudy	151	3	117	31
Sleet/Hail	0	0	0	0
Rain	21	0	15	6
Snow	0	0	0	0
Severe Crosswinds	1	0	1	0
Blowing Sand, Soil, Dirt	1	0	1	0
Fog, Smog, Smoke	1	0	1	0
Blowing Snow	0	0	0	0
Other	1	0	1	0
Unknown	11	0	5	6
TOTAL	1,995	25	1,640	330

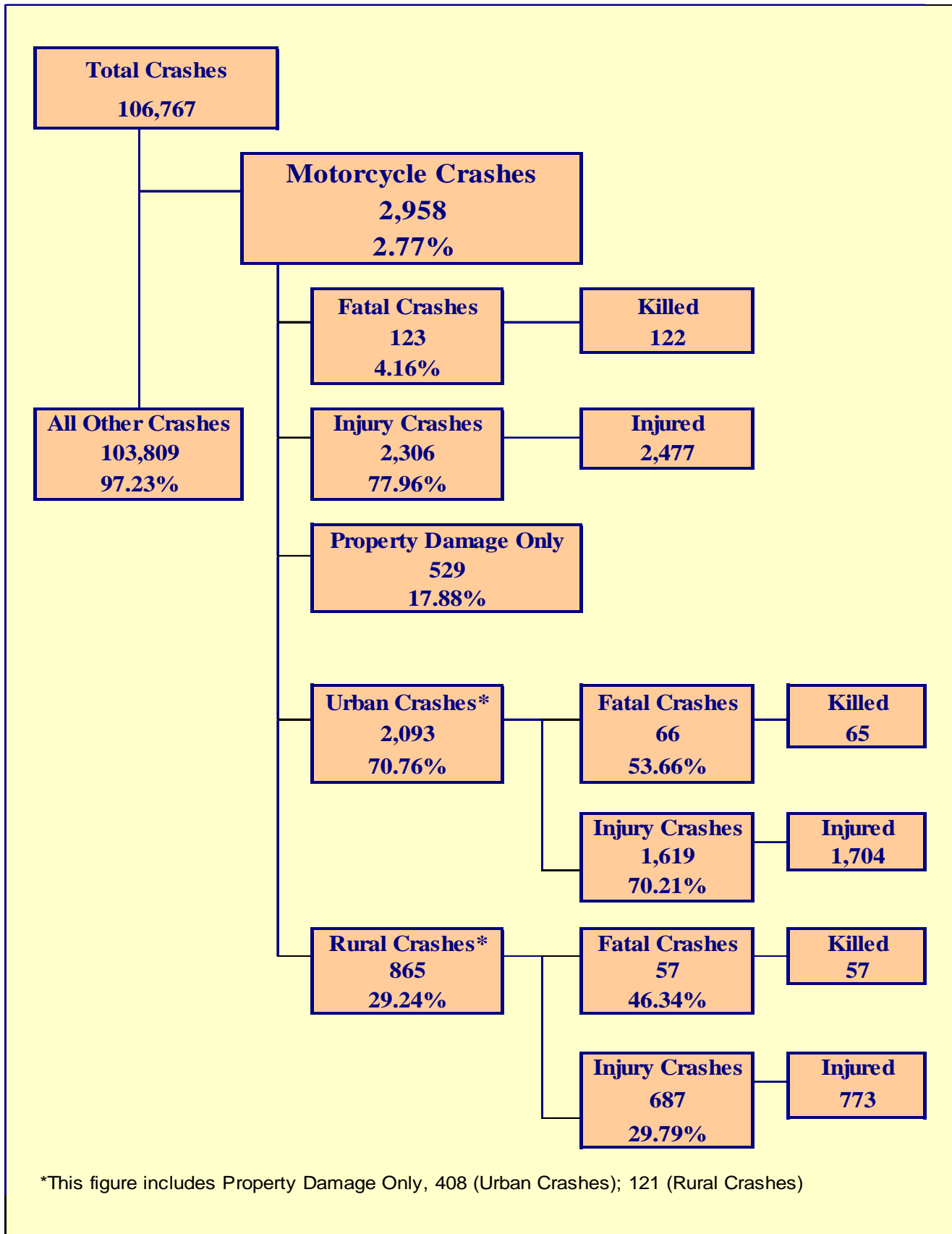


Chart 8 - 1

MC Fatalities by Year

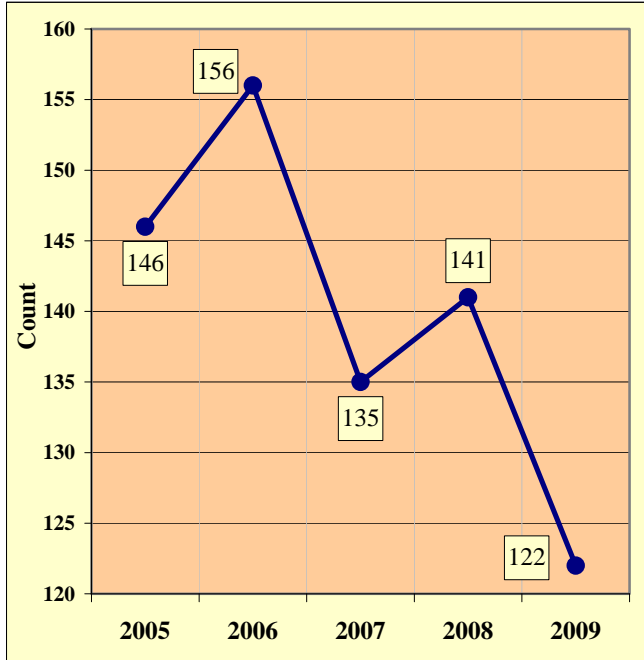
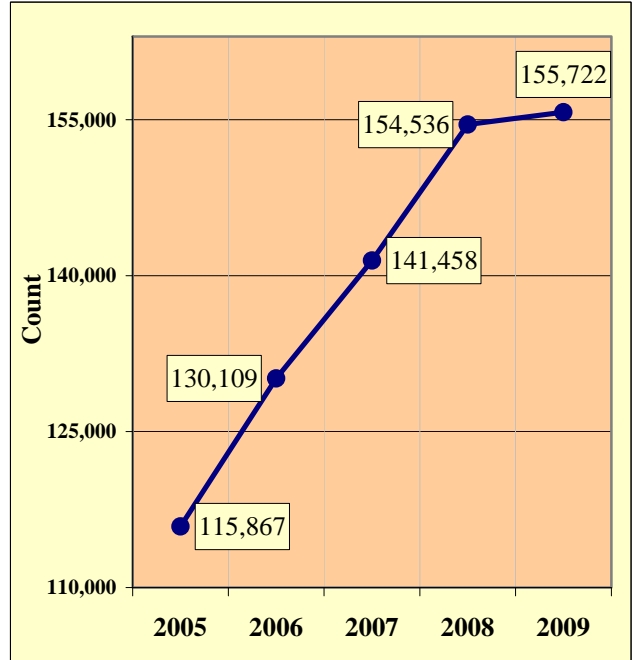


Chart 8 - 2

MC Registrations in Arizona



Total Point-in-Time of Registered Motorcycles at the end of Calendar year 2009.

(Source: MVD - MV988 MV630419 Currently Registered Vehicles by County Listing (motorcycle sub category), reports dated 12/31/09.)

Chart 8 - 3

Fatality Rate per Registered MC

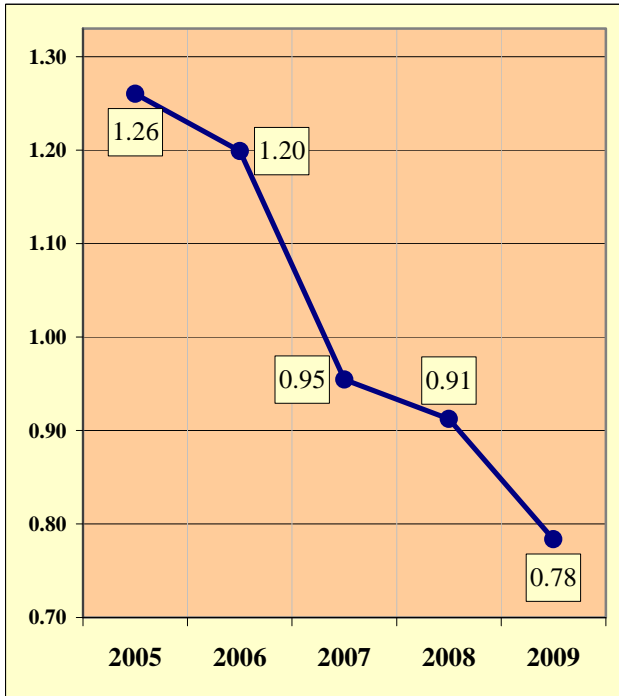
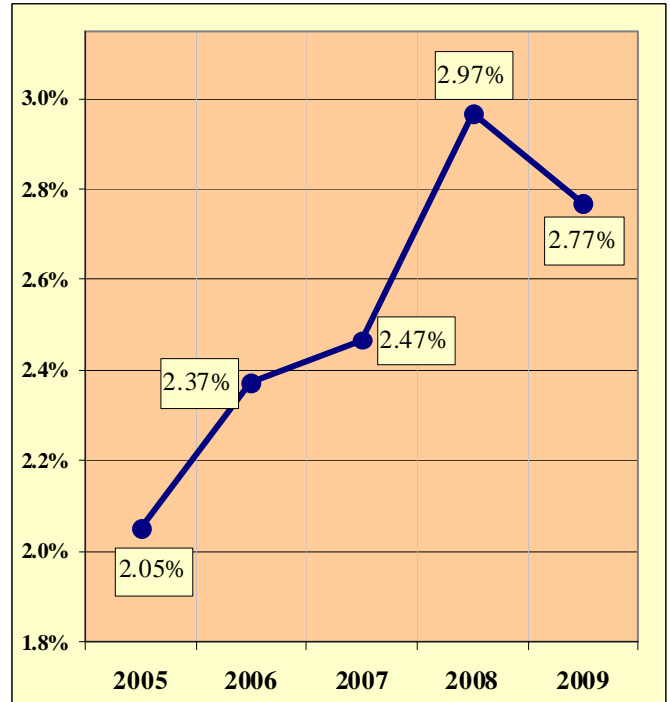


Chart 8 - 4

Percent of MC Crashes to All Crashes



Section 8: – Motorcycle (MC) Crashes

Table 8 - 1

MC Crashes by First Harmful Event

First Harmful Event Type	Number of Crashes			
	Total	Fatal	Injury	PDO
Collision with Motor Vehicle in Transport	1,617	57	1,185	375
Overtaking	357	16	314	27
Collision with Pedestrian	12	1	11	0
Collision with Pedalcyclist	10	1	9	0
Collision with Animal	40	3	32	5
Collision with Fixed Object	382	38	306	38
Collision with Non-fixed Object*	63	1	37	25
Vehicle Fire or Explosion	4	0	3	1
Other Non-collision**	394	6	347	41
Unknown	79	0	62	17
TOTAL	2,958	123	2,306	529
*Includes Collision with Parked Vehicles, Trains, Railway Vehicles, and Work Zone Equipment				
**Includes Vehicle Immersion, Jackknife, and Cargo Loss or Shift				

Table 8 - 2

Lighting Conditions in MC Crashes

Type of Lighting Conditions	Number of Crashes			
	Total	Fatal	Injury	PDO
Daylight	2,103	75	1,638	390
Dawn	48	0	41	7
Dusk	112	7	86	19
Dark - Lighted	491	25	386	80
Dark - Not Lighted	167	14	126	27
Dark - Unknown Lighting	37	2	29	6
TOTAL	2,958	123	2,306	529

Table 8 - 3

Road Surface Conditions in MC Crashes

Type of Road Surface Condition	Number of Operators			
	Total	In Fatal Crashes	In Injury Crashes	In PDO Crashes
Dry	2,900	122	2,255	523
Wet	49	0	35	14
Snow	1	0	1	0
Slush	0	0	0	0
Ice/Frost	1	0	1	0
Water (standing or moving)	1	0	1	0
Sand	7	0	6	1
Mud, Dirt, Gravel	39	0	37	2
Oil	11	0	9	2
Other	8	0	7	1
Unknown	12	5	5	2
TOTAL	3,029	127	2,357	545

Table 8 - 4

MC Crashes by Geographic Location

Category	Total	Urban	Percent of Total	Rural	Percent of Total
Total Crashes	2,958	2,093	70.76%	865	29.24%
Fatal Crashes	123	66	53.66%	57	46.34%
Injury Crashes	2,306	1,619	70.21%	687	29.79%
PDO Crashes	529	408	77.13%	121	22.87%
Persons Killed	122	65	53.28%	57	46.72%
Persons Injured	2,477	1,704	68.79%	773	31.21%

Table 8 - 5

Operator Involvement by Age in MC Crashes

Operator Age Group	Number of Operators							
	Total	Percent of Total	In Fatal Crashes	Percent of Fatal	In Injury Crashes	Percent of Injury	In PDO Crashes	Percent of PDO
15 & Under	9	0.30%	0	0.00%	9	0.38%	0	0.00%
16	9	0.30%	0	0.00%	9	0.38%	0	0.00%
17	14	0.46%	0	0.00%	12	0.51%	2	0.37%
18	62	2.05%	1	0.79%	45	1.91%	16	2.94%
19	73	2.41%	1	0.79%	63	2.67%	9	1.65%
20	75	2.48%	0	0.00%	63	2.67%	12	2.20%
21	86	2.84%	4	3.15%	63	2.67%	19	3.49%
22	81	2.67%	2	1.57%	63	2.67%	16	2.94%
23	96	3.17%	3	2.36%	74	3.14%	19	3.49%
24	74	2.44%	1	0.79%	56	2.38%	17	3.12%
25-34	619	20.44%	17	13.39%	493	20.92%	109	20.00%
35-44	575	18.98%	27	21.26%	459	19.47%	89	16.33%
45-54	622	20.53%	27	21.26%	495	21.00%	100	18.35%
55-64	402	13.27%	24	18.90%	310	13.15%	68	12.48%
65-74	127	4.19%	15	11.81%	97	4.12%	15	2.75%
75 & Older	29	0.96%	4	3.15%	22	0.93%	3	0.55%
Unknown	76	2.51%	1	0.79%	24	1.02%	51	9.36%
TOTAL	3,029	100.00%	127	100.00%	2,357	100.00%	545	100.00%

Table 8 - 6

MC Operator Physical Condition

Type of Condition	Number of Operators							
	Total	Percent of Total	In Fatal Crashes	Percent of Fatal	In Injury Crashes	Percent of Injury	In PDO Crashes	Percent of PDO
No Apparent Influence	2,549	84.15%	56	44.09%	2,014	85.45%	479	87.89%
Had Been Drinking	221	7.30%	36	28.35%	166	7.04%	19	3.49%
Appeared to be Under the Influence of Drugs*	10	0.33%	6	4.72%	4	0.17%	0	0.00%
Medications	3	0.10%	0	0.00%	3	0.13%	0	0.00%
Illness	24	0.79%	0	0.00%	22	0.93%	2	0.37%
Physical Impairment	1	0.03%	0	0.00%	1	0.04%	0	0.00%
Fell Asleep or Fatigued	2	0.07%	0	0.00%	2	0.08%	0	0.00%
Other	8	0.26%	0	0.00%	8	0.34%	0	0.00%
Unknown	211	6.97%	29	22.83%	137	5.81%	45	8.26%
TOTAL	3,029	100.00%	127	100.00%	2,357	100.00%	545	100.00%

* Illegal drugs or narcotics

Section 8: – Motorcycle (MC) Crashes

Table 8 - 7

MC Operators Involved in Fatal Crashes by License Status

License Status	2007		2008		2009	
	Number of Operators	Percent of Total	Number of Operators	Percent of Total	Number of Operators	Percent of Total
No license	6	4.29%	3	2.11%	6	4.84%
Invalid	37	26.43%	21	14.79%	25	20.16%
Valid	96	68.57%	117	82.39%	91	73.39%
Unknown	1	0.71%	1	0.70%	2	1.61%
TOTALS	140	100.00%	142	100.00%	124	100.00%
Note: Includes only motorcycle operators involved in fatal crashes.						
Source: FARS Data Queries						

Table 8 - 8

MC Operator's Helmet Use

Severity of Injury	Helmet Used	Percent of Total	Helmet Not Used	Percent of Total	Unknown	Percent of Total	Total	Percent of Total
No Injury	250	17.84%	103	13.22%	221	26.03%	574	18.95%
Unknown Injury	5	0.36%	6	0.77%	33	3.89%	44	1.45%
Possible Injury	225	16.06%	88	11.30%	166	19.55%	479	15.81%
Non-Incapacitating Injury	574	40.97%	298	38.25%	293	34.51%	1,165	38.46%
Incapacitating Injury	300	21.41%	230	29.53%	124	14.61%	654	21.59%
Fatal Injury	47	3.35%	54	6.93%	12	1.41%	113	3.73%
TOTALS	1,401	100.00%	779	100.00%	849	100.00%	3,029	100.00%

Table 8 - 9

MC Passenger's Helmet Use

Severity of Injury	Helmet Used	Percent of Total	Helmet Not Used	Percent of Total	Unknown	Percent of Total	Total	Percent of Total
No Injury	16	18.18%	16	21.62%	25	29.41%	57	23.08%
Unknown Injury	1	1.14%	0	0.00%	1	1.18%	2	0.81%
Possible Injury	10	11.36%	9	12.16%	18	21.18%	37	14.98%
Non-Incapacitating Injury	35	39.77%	28	37.84%	29	34.12%	92	37.25%
Incapacitating Injury	21	23.86%	18	24.32%	11	12.94%	50	20.24%
Fatal Injury	5	5.68%	3	4.05%	1	1.18%	9	3.64%
TOTALS	88	100.00%	74	100.00%	85	100.00%	247	100.00%

Table 8 - 10

MC Operators and Passengers Killed and Injured

Age of Victim	Persons Killed			Persons Injured			
	Total	Male	Female	Total	Male	Female	Gender Unknown
0-4	0	0	0	0	0	0	0
5-9	0	0	0	9	3	6	0
10-14	0	0	0	10	8	2	0
15-19	2	2	0	146	118	28	0
20-24	9	9	0	334	301	33	0
25-34	18	16	2	516	457	59	0
35-44	24	22	2	484	394	90	0
45-54	28	25	3	511	435	76	0
55-64	21	20	1	324	284	40	0
65-74	16	14	2	97	94	3	0
75 & Older	3	3	0	24	24	0	0
Unknown	1	0	1	22	12	4	6
TOTAL	122	111	11	2,477	2,130	341	6

Table 8 - 11

MC Operator Errors

Type of Violation or Behavior	Number of Operators							
	Total	Percent of Total	In Fatal Crashes	Percent of Fatal	In Injury Crashes	Percent of Injury	In PDO Crashes	Percent of PDO
No Improper Action	1,324	43.71%	45	35.43%	1,018	43.19%	261	47.89%
Speed too Fast for Conditions	717	23.67%	22	17.32%	578	24.52%	117	21.47%
Exceeded Lawful Speed	73	2.41%	5	3.94%	64	2.72%	4	0.73%
Failed to Yield Right-Of-Way	78	2.58%	1	0.79%	52	2.21%	25	4.59%
Followed Too Closely	71	2.34%	1	0.79%	57	2.42%	13	2.39%
Ran Stop Sign	13	0.43%	1	0.79%	10	0.42%	2	0.37%
Disregarded Traffic Signal	48	1.58%	3	2.36%	39	1.65%	6	1.10%
Made Improper Turn	19	0.63%	1	0.79%	17	0.72%	1	0.18%
Drove in Opposing Lane	32	1.06%	2	1.57%	29	1.23%	1	0.18%
Knowingly Operated with Faulty or Missing Equipment	12	0.40%	1	0.79%	9	0.38%	2	0.37%
Required Motorcycle Safety Equipment Not Used	12	0.40%	0	0.00%	12	0.51%	0	0.00%
Passed in No-Passing Zone	7	0.23%	0	0.00%	6	0.25%	1	0.18%
Unsafe Lane Change	37	1.22%	3	2.36%	21	0.89%	13	2.39%
Failed to Keep in Proper Lane	65	2.15%	9	7.09%	48	2.04%	8	1.47%
Disregarded Pavement Markings	2	0.07%	0	0.00%	2	0.08%	0	0.00%
Other Unsafe Passing	33	1.09%	0	0.00%	27	1.15%	6	1.10%
Inattention/Distraction	178	5.88%	6	4.72%	139	5.90%	33	6.06%
Electronic Communications Device	0	0.00%	0	0.00%	0	0.00%	0	0.00%
Other	97	3.20%	3	2.36%	78	3.31%	16	2.94%
Unknown	211	6.97%	24	18.90%	151	6.41%	36	6.61%
TOTAL	3,029	100.00%	127	100.00%	2,357	100.00%	545	100.00%

Section 8: – Motorcycle (MC) Crashes

Chart 8 - 5

All MC Crashes vs. Fatal MC Crashes by Time of Day - Weekdays

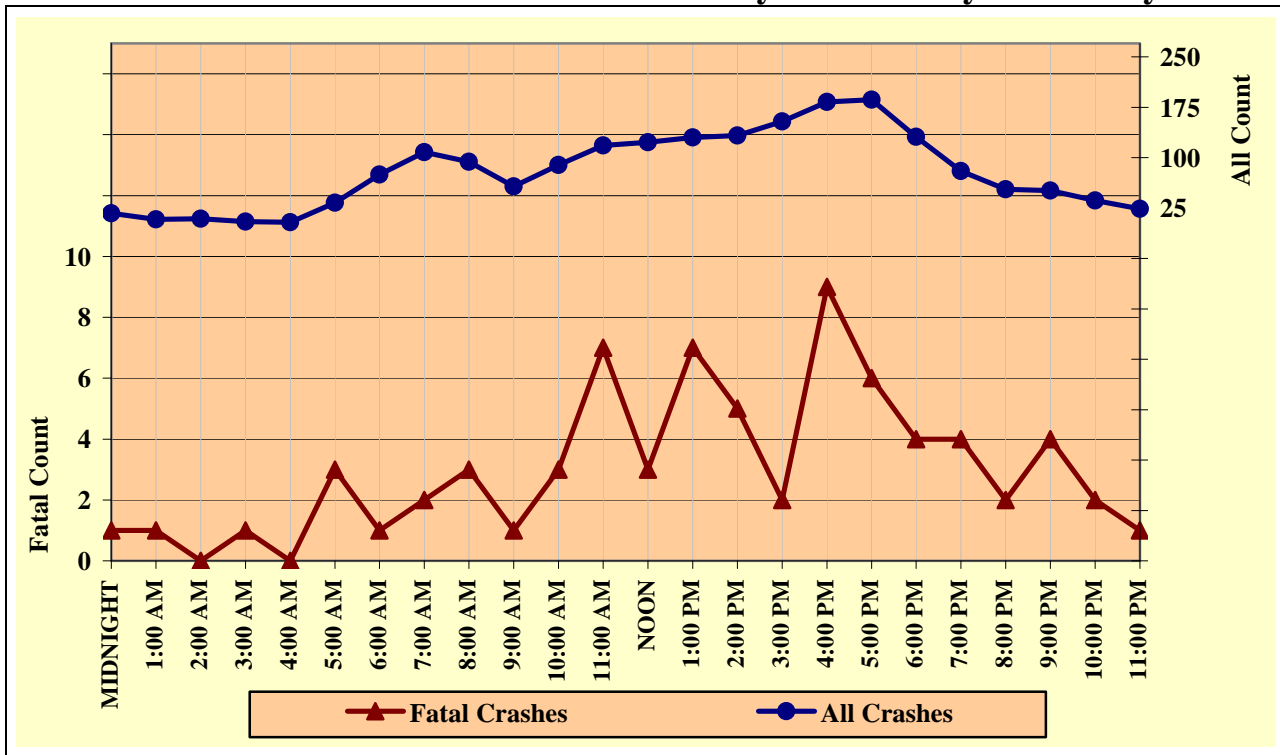


Chart 8 - 6

All MC Crashes vs. Fatal MC Crashes by Time of Day - Weekends

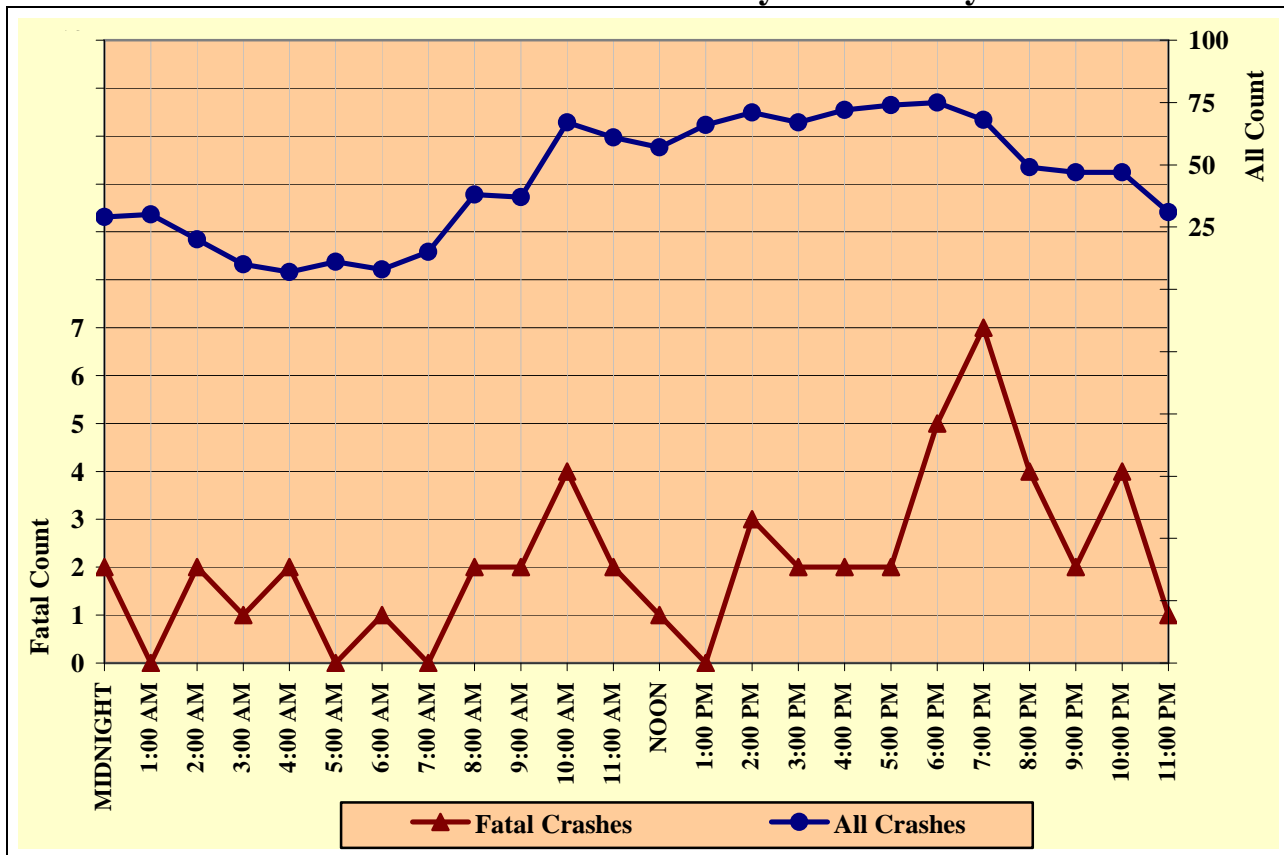


Chart 8 - 7

All MC Crashes vs. Fatal MC Crashes by Day of Week

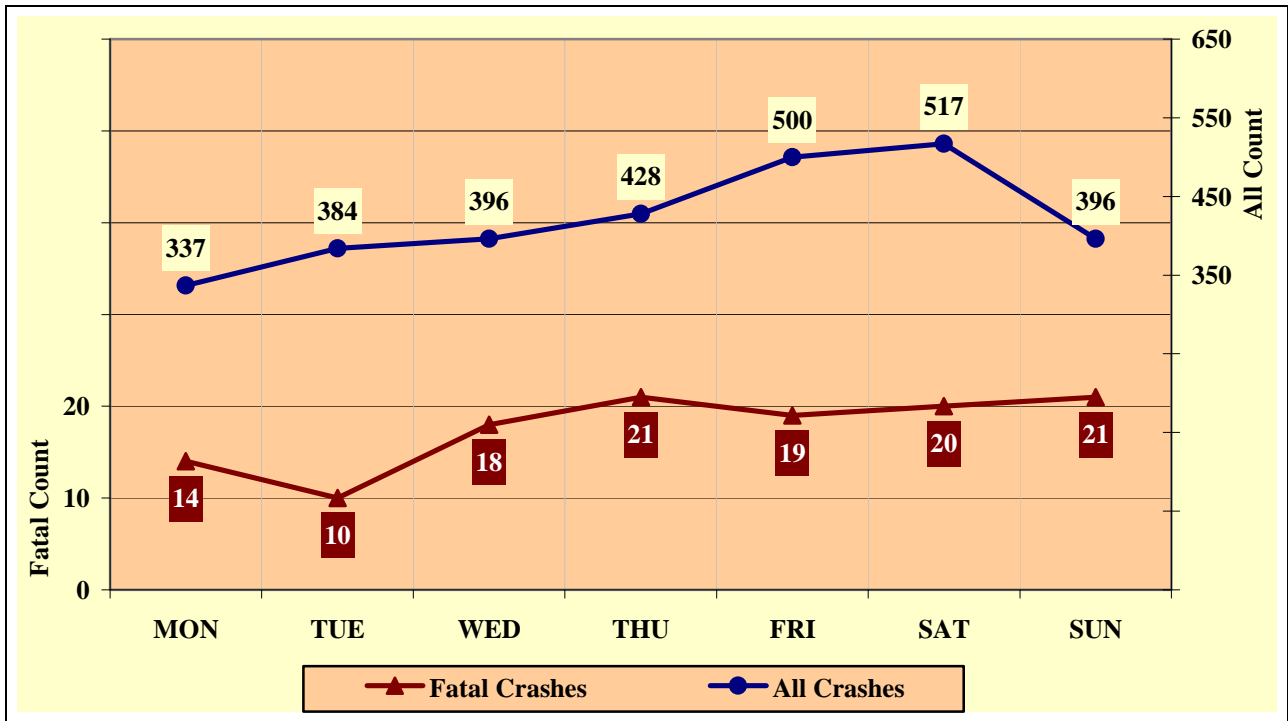
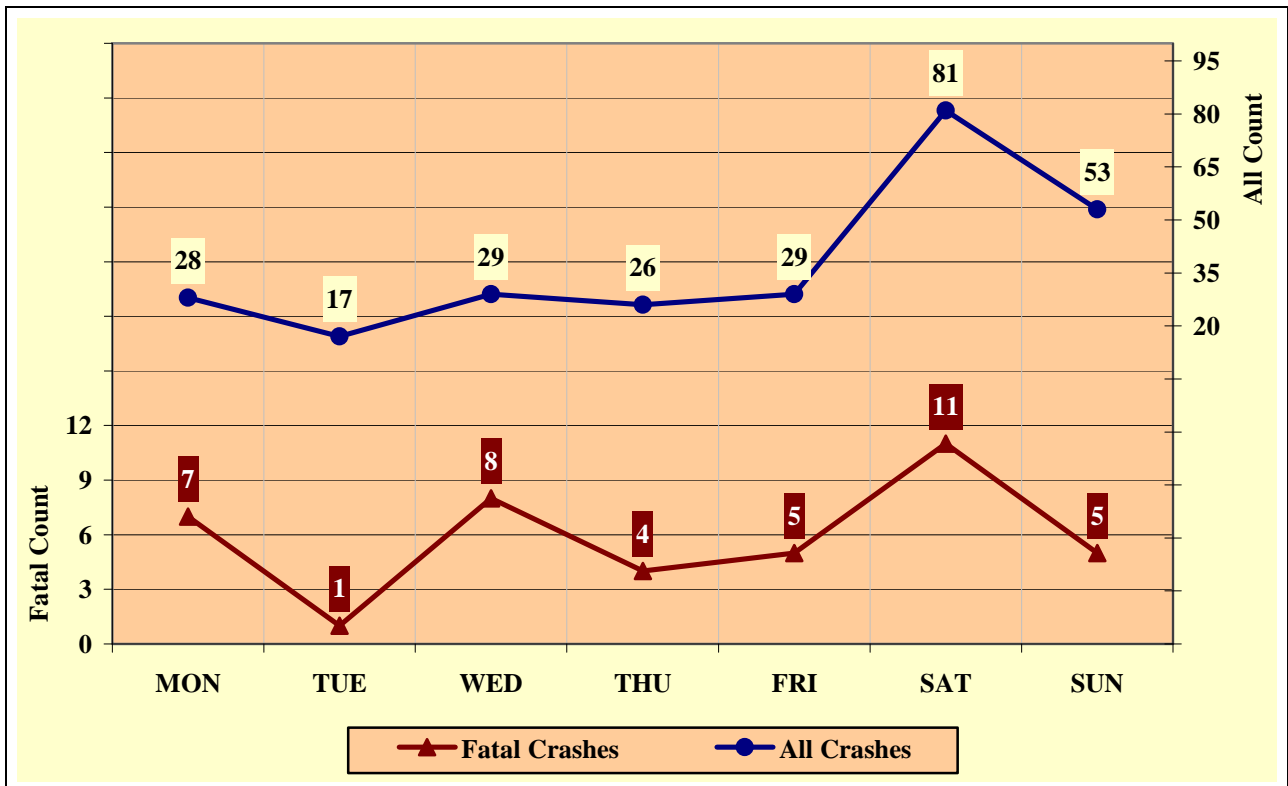


Chart 8 - 8

Alcohol Related MC Crashes vs. Fatal Alcohol Related MC Crashes by Day of Week



Section 8: – Motorcycle (MC) Crashes

Table 8 - 12

MC Crashes by Hour and Day of Week

Hour Beginning	Total Crashes		Monday		Tuesday		Wednesday		Thursday		Friday		Saturday		Sunday		Weekdays		Weekends	
	All	Fatal	All	Fatal	All	Fatal	All	Fatal	All	Fatal	All	Fatal	All	Fatal	All	Fatal	All	Fatal	All	Fatal
MIDNIGHT	46	3	6	1	6	0	0	0	5	0	6	1	19	0	4	1	17	1	29	2
1:00 AM	38	1	6	0	0	0	1	0	4	0	3	1	16	0	8	0	8	1	30	0
2:00 AM	29	2	0	0	2	0	1	0	2	0	4	0	9	2	11	0	9	0	20	2
3:00 AM	15	2	4	0	2	0	1	0	1	1	1	0	4	1	2	0	5	1	10	1
4:00 AM	11	2	1	0	2	0	0	0	1	0	1	0	5	1	1	1	4	0	7	2
5:00 AM	44	3	5	0	4	0	6	1	11	1	12	1	3	0	3	0	33	3	11	0
6:00 AM	83	2	10	0	16	0	14	0	22	0	13	1	5	0	3	1	75	1	8	1
7:00 AM	123	2	24	0	20	2	18	0	17	0	29	0	12	0	3	0	108	2	15	0
8:00 AM	132	5	12	2	19	0	23	0	24	1	16	0	22	0	16	2	94	3	38	2
9:00 AM	94	3	16	0	9	0	5	0	12	0	15	1	23	1	14	1	57	1	37	2
10:00 AM	156	7	15	0	19	1	17	0	21	2	17	0	38	1	29	3	89	3	67	4
11:00 AM	179	9	24	0	22	2	22	3	20	2	30	0	31	0	30	2	118	7	61	2
NOON	180	4	23	0	20	0	25	0	21	2	34	1	36	1	21	0	123	3	57	1
1:00 PM	196	7	17	1	29	0	25	1	27	4	32	1	35	0	31	0	130	7	66	0
2:00 PM	204	8	23	2	17	0	20	1	30	1	43	1	38	2	33	1	133	5	71	3
3:00 PM	221	4	30	1	29	0	29	0	29	0	37	1	34	2	33	0	154	2	67	2
4:00 PM	255	11	29	2	39	3	31	2	37	1	47	1	41	2	31	0	183	9	72	2
5:00 PM	260	8	28	1	37	0	41	2	42	3	38	0	41	1	33	1	186	6	74	2
6:00 PM	206	9	19	0	32	1	43	2	37	1	26	3	21	1	28	1	131	4	75	5
7:00 PM	148	11	16	1	20	0	26	3	18	0	25	1	21	1	22	5	80	4	68	7
8:00 PM	102	6	7	1	11	0	18	0	17	1	16	2	21	1	12	1	53	2	49	4
9:00 PM	98	6	12	1	15	0	13	2	11	1	18	1	12	1	17	0	51	4	47	2
10:00 PM	83	6	7	1	7	0	9	1	13	0	23	2	19	2	5	0	36	2	47	4
11:00 PM	55	2	3	0	7	1	8	0	6	0	14	0	11	0	6	1	24	1	31	1
TOTAL	2,958	123	337	14	384	10	396	18	428	21	500	19	517	20	396	21	1,901	72	1,057	51

Crashes during Weekends accounted for 35.73% of all MC crashes and 41.46% of Fatal MC Crashes.

Crashes during Weekdays accounted for 64.27% of all MC crashes and 58.54% of Fatal MC Crashes.

Acknowledgements

Special gratitude to our other providers of data and information including:

The National Center for Statistics and Analysis, Research and Development

National Highway Transportation Safety Administration

The Arizona State Data Center, Arizona Department of Economic Security

*The Office of Planning, Evaluation, and Public Health Statistics, Arizona
Department of Health Services*

The Information Technology Group, Arizona Department of Transportation

The National Safety Council