



Airport Capital Improvement Program



2014-2018

Table of Contents

Airport Program Overview	3
Airport Program	
Arizona Airports Map.....	7
Abbreviations	9
Summary of Airport Program Dollars	11
Airport Projects by Airport	13

Various Helpful Web Links

Five-Year Transportation and Facilities Construction Program:
http://www.azdot.gov/MPD/priority_Programming/Five_Year_Programs.asp

Priority Planning Advisory Committee (PPAC):
http://www.azdot.gov/MPD/priority_Programming/PPAC/Index.asp

Aeronautics Home Page:
http://mpd.azdot.gov/mpd/airport_development/index.asp

Airport Development Programs:
http://mpd.azdot.gov/MPD/Airport_Development/airports/dev_plan.asp

Airport Program Overview

In conjunction with Arizona's public airports and the Federal Aviation Administration (FAA), ADOT develops the Tentative Five-Year Airport Capital Improvement Program (ACIP) to parallel the FAA's Airport Capital Improvement Program. The ACIP has the dual objective of maximizing the use of State dollars for airport development and maximizing FAA funding for Arizona airports. Federal monies are derived mainly from taxes on airline tickets and are distributed by the Federal Aviation Administration directly to local airports through the national Airport Improvement Program.

State funds come mainly from flight property tax, aircraft lieu tax, aircraft registration, and aviation fuel tax. The ACIP development process allocates money from the State Aviation Fund and distributes these funds across five major programs of airport development assistance. The State Transportation Board approves this distribution annually. The five programs are:

1) Federal/State/Local Grants

Projects utilizing federal, state and local funds include: design, construction, safety, security, capacity enhancement, equipment, maintenance, environmental, planning, and land acquisition. When a federal agency provides eligible grants directly to the airports, the State provides ½ of the local share of approved grants directly to the airports.

2) State/Local Grants

Projects utilizing state and local funds only include: design, construction, safety, security, capacity enhancement, environmental, planning and land acquisition. The State provides either 90% or 95% funding for prioritized approved grants directly to the airports.

3) Airport Pavement Management System (APMS)

Prioritized projects maintaining and protecting eligible aviation pavement surfaces are performed by the State. The State provides 100% of the design and construction administration for the project and 90% of the construction costs. The airports provide a local share of 10% of the construction costs and airport access through a joint project agreement.

4) Airport Loan Program

The State considers and awards loans to airports. These loans have typically included revenue generating projects like construction of new fuel farms, aircraft "T-hangars" and large aviation business hangars. The State may also consider and award grant match loans to airports.

5) Statewide System Planning and Services

The State performs state-wide system studies and projects either with only state funds or with state and federal funds.

Airport Program Overview (continued)

In summary, 63 public airports submitted 676 project requests for consideration worth \$1.24 B over the five-year program period. These projects represent all Federal/State/Local and all State/Local funding desires on the part of the airport sponsors. The State develops the APMS program, the Airport Loan program, and the Statewide System Planning program.

The tentative ACIP programs a total of \$1.19 B over the five-year program period. This is an approximately 1.6% decrease from the previous year's program. This slight decrease is due to reduced pavement maintenance funds for the 5 year program compared to the previous program. Several projects were removed from the program because they were already funded by other sources.

State funding to match Federal/State/Local grants is proposed at \$22.5 M over the program period. This is an approximately 2.3% increase from the previous year's program. This increase is due to constant revenue resulting in additional state matching fund availability over the last year. This five-year investment of State funds will support about \$503 M in Federal aid and require about \$22.5 M from airport sponsors. The following program lists show all requested federal/state/local grants submitted for this five-year program (approximately \$937.8 M in Federal aid was requested). Actual grant awards will be made by the federal agencies, with matching grants issued by the State upon approval.

The State's development over the five-year program is designed to provide half of a sponsor's share of a federally funded project. Expected sponsor obligations on most federal projects beginning with FY 2014 will be 8.94% of a projects total cost, making the state share 4.47%. Some federal grants have a local share of 25%. For these projects, the State share would be 12.5%. As airport sponsors receive a federal grant, they will apply to the state for the matching funds.

State funding for State/Local grants proposed at \$64.1 M, is 44% more than last year's total of \$44.6 M. This increase is due to increased revenue and assumed increase in availability of State funds. This investment of State funds will require about \$6.6 M from local airport sponsors. The following program lists only show those projects for State/Local funding that have met the State Transportation Board's qualifying priority rating.

The maximum total State grant funds to any one airport per fiscal year can not exceed 10% of the previous three year's average revenue into the State Aviation Fund. This maximum applies only to Federal/State/Local plus State/Local grant funds. For fiscal year 2014 the maximum grant funding is \$2.13 M per airport.

Airport Program Overview (continued)

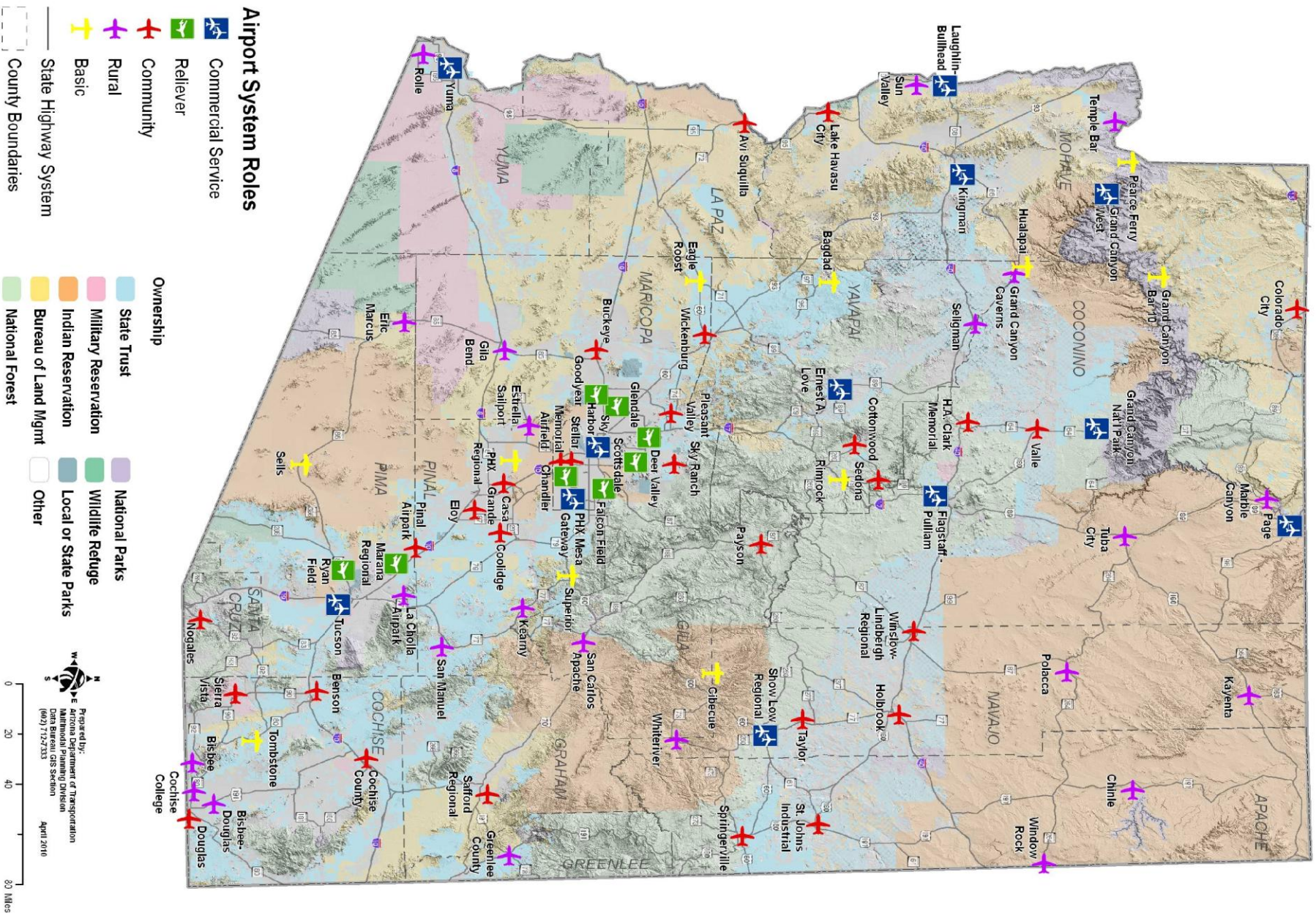
The five-year ACIP also provides \$16 M for State funded Airport Loans. Up to \$2 M in Airport Loans may be issued in FY 2014. Loans are awarded on a first come, first serve basis as funding levels allow if approved by the STB upon recommendation from the Loan Committee.

In addition to State grants and loans, ADOT supplements airport pavement maintenance statewide. The five-year ACIP provides \$34.8 M for statewide airport pavement maintenance. In 2014, \$6.4 M will be invested in Airport Pavement Management System (APMS) projects at public airports.

Statewide System Planning and Services are managed by ADOT and funded by both Federal and State monies. In 2014, \$2.6 M will be invested in statewide planning studies and services to benefit Arizona airports. The five-year ACIP proposes \$15.3 M for statewide planning studies and services to benefit Arizona airports.

This page is left intentionally blank.

Arizona Airports Map



This page is left intentionally blank.

2014-2018 ACIP Abbreviations

A/C	Advisory Circular (FAA)	INTL	International
AC	Aircraft	lf	Linear Feet
ACP	Asphalt Cement Pavement	LPV	Lateral Precision with Vertical guidance
ADG	Aircraft Design Group	MALSR	Medium-Intensity Approach Lighting System with Runway Alignment Indicator Lights
ALP	Airport Layout Plan		
AOA	Airport Operations Area	MAP	Military Airport Program
approx.	Approximately	MIRL	Medium Intensity Runway Lights
apron	Aircraft Parking Area	MITL	Medium Intensity Taxiway Lights
APMS	Airport Pavement Management System	MUNI	Municipal
APN	Assessor's Parcel Number	NAVAID	Navigational Aid
ARC	Airport Reference Code	NEPA	National Environmental Policy Act
ARFF	Aircraft Rescue and Fire Fighting	NOTAM	Notice to Airmen
ASLD	Arizona State Land Department	OFA	Object Free Area
ASOS	Automatic Surface Observation System	ops.	Operations
ASR	Airport Surveillance Radar	PAPI	Precision Approach Path Indicator
ATCT	Air Traffic Control Tower	Pave Pres	Pavement Preservation
AWOS	Automated Weather Observation System	PCC	Portland Cement Concrete
BLM	Bureau of Land Management	PCI	Pavement Condition Index
BRL	Building Restriction Line	PFC	Porous Friction Course
CatEx	Categorical Exclusion	Ph. 1	Phase 1 of a Multi-year Construction Project
CERT	Certification	Ph. 2	Phase 2 of a Multi-year Construction Project
constr.	Construct or Construction	rehab.	Rehabilitate or Rehabilitation
DCC	Defense Contractor Cargo	recon.	Reconstruct or Reconstruction
DNL or LDN	Day/Night Equivalent Sound Level	REIL	Runway End Identifier Lights
DWL	Dual Wheel Load	RGL	Runway Guard Light
EA	Environmental Assessment	ROD	Record of Decision
EIS	Environmental Impact Statement	ROFA	Runway Obstacle Free Area
EMAS	Engineered Materials Arresting System	RSA	Runway Safety Area
extg.	Existing	RSAT	Runway Safety Action Team
FAA	Federal Aviation Administration	RPZ	Runway Protection Zone
FBO	Fixed Base Operator	RVZ	Runway Visibility Zone
FOD	Foreign Object Debris	Rwy	Runway
FAR	Federal Aviation Regulation	SASP	State Airports System Plan
FEMA	Federal Emergency Management Agency	sf	Square Feet
ft	Feet	SRE	Snow Removal Equipment
GA	General Aviation	sy	Square Yards
GPS	Global Positioning System	TLOF	Touchdown and Liftoff Area
HIRL	High Intensity Runway Lights	TSA	Transportation Security Administration
HS	High Speed	Twy	Taxiway
ID	Identification	USFS	United States Forest Service
ILS	Instrument Landing System	VALE	Voluntary Airport Low Emission

This page is left intentionally blank.

Summary of Airport Program Dollars

	State Share	Local Share	Federal Share	Project Totals
FY 2014 Fed/State/Local	\$9,136,441	\$9,982,963	\$145,484,513	\$164,603,916
FY 2014 State/Local Total	\$16,964,041	\$3,087,227		\$20,051,268
FY 2014 APMS Totals	\$6,426,786	\$714,087		\$7,140,873
FY 2014 State Totals	\$2,600,000	\$0		\$2,600,000
FY 2014 Project Totals	\$35,127,268	\$13,784,276	\$145,484,513	\$194,396,057
FY 2015 Fed/State/Local	\$11,789,662	\$15,332,144	\$218,396,997	\$245,518,803
FY 2015 State/Local Total	\$14,669,975	\$1,629,997		\$16,299,972
FY 2015 APMS Totals	\$5,953,683	\$661,520		\$6,615,203
FY 2015 State Totals	\$3,300,000	\$0		\$3,300,000
FY 2015 Project Totals	\$35,713,320	\$17,623,661	\$218,396,997	\$271,733,978
FY 2016 Fed/State/Local	\$17,662,129	\$19,289,218	\$326,464,678	\$363,416,025
FY 2016 State/Local Total	\$11,664,875	\$1,296,097		\$12,960,972
FY 2016 APMS Totals	\$8,839,325	\$982,146		\$9,821,471
FY 2016 State Totals	\$3,400,000	\$0		\$3,400,000
FY 2016 Project Totals	\$41,566,329	\$21,567,461	\$326,464,678	\$389,598,468
FY 2017 Fed/State/Local	\$7,303,320	\$9,016,671	\$123,680,061	\$140,000,052
FY 2017 State/Local Total	\$8,868,015	\$1,555,335		\$10,423,350
FY 2017 APMS Totals	\$6,881,972	\$764,665		\$7,646,637
FY 2017 State Totals	\$2,600,000	\$0		\$2,600,000
FY 2017 Project Totals	\$25,653,307	\$11,336,671	\$123,680,061	\$160,670,039
FY 2018 Fed/State/Local	\$9,588,234	\$10,058,032	\$121,208,203	\$140,854,469
FY 2018 State/Local Total	\$10,934,750	\$1,214,972		\$12,149,722
FY 2018 APMS Totals	\$6,152,761	\$683,641		\$6,836,402
FY 2018 State Totals	\$3,400,000	\$0		\$3,400,000
FY 2018 Project Totals	\$30,075,745	\$11,956,645	\$121,208,203	\$163,240,593
Total 5-Year Funded Program	\$168,135,968	\$76,268,715	\$935,234,452	\$1,179,639,135

This page is left intentionally blank.

Airport Projects - by Airport

Airport Name - County

FY	Project Component	Project Description	State Share	Local Share	Federal Share	Project Total
ADOT Aeronautics - MARICOPA						
2014		System Planning and Services	\$2,000,000	\$0	\$0	\$2,000,000
2014		APMS Annual Design Services	\$600,000	\$0	\$0	\$600,000
2015		APMS Annual Design Services	\$600,000	\$0	\$0	\$600,000
2015		System Planning and Services	\$2,700,000	\$0	\$0	\$2,700,000
2016		APMS Annual Design Services	\$600,000	\$0	\$0	\$600,000
2016		System Planning and Services	\$2,800,000	\$0	\$0	\$2,800,000
2017		APMS Annual Design Services	\$600,000	\$0	\$0	\$600,000
2017		System Planning and Services	\$2,000,000	\$0	\$0	\$2,000,000
2018		APMS Design Services	\$600,000	\$0	\$0	\$600,000
2018		System Planning and Services	\$2,800,000	\$0	\$0	\$2,800,000
Airport Total:			\$15,300,000	\$0	\$0	\$15,300,000
AVI SUQUILLA - LA PAZ						
2014	Runways:<Construct/Extend/Improve> Runway Safety Area [Non-Primary Airports] - Standards	Erosion control easterly drainage ditches Rwy 1/19, 8,250 lf by protecting ditch back slope with pavement (soil cement, asphalt paving, shotcrete/gunnite or concrete ditch lining) to keep flush curb at top of back slope from being undermined.	\$0	\$38,442	\$391,558	\$430,000
2015	Runways:<Construct/Extend/Improve> Runway Safety Area [Non-Primary Airports] - Standards	Erosion control westerly drainage ditches Rwy 1/19, 8,250 lf by protecting ditch back slope with pavement (soil cement, asphalt paving, shotcrete/gunnite or concrete ditch lining) to keep flush curb at top of back slope from being undermined.	\$0	\$40,230	\$409,770	\$450,000
2015	Taxiways:Construct Taxiway [Includes Relocation]	Completion of Rwy 1/19 parallel Twy approx. 4,800 ft x 50 ft including MITL and guidance signs required to meet FAA standards. Exit Twy A2 to be reconfigured.	\$0	\$187,740	\$1,912,260	\$2,100,000
2016	Apron:Expand Apron - Capacity	Constr. new 18,000 sy north itinerant AC and helicopter parking apron and 28,000 sy of south based AC parking apron including storm drainage improvements - Includes intinerant helicopter parking area on north ramp.	\$0	\$281,610	\$2,868,390	\$3,150,000
2017	Ground Transportation:<Construct/Expand/Improve/Modify/Rehabilitate> Service Road - Other	Pave perimeter road with aggregate base and asphalt concrete pavement 16 ft wide, approx. 42,000 sy and extend culverts.	\$0	\$143,040	\$1,456,960	\$1,600,000
2017	Apron:Rehabilitate Apron - Reconstruction	Pave pres. GA apron (70,000 sy) - asphalt emulsion seal coat of 2012 AIP 019 project.	\$0	\$26,820	\$273,180	\$300,000
2018	Taxiways:Extend Taxiway - Capacity	Extend three taxilanes approx. 400 ft x 75 ft each for T-hangar or corporate hangar development.	\$0	\$57,216	\$582,784	\$640,000
Airport Total:			\$0	\$775,098	\$7,894,902	\$8,670,000

Airport Projects - by Airport

Airport Name - County

FY	Project Component	Project Description	State Share	Local Share	Federal Share	Project Total
BAGDAD - YAVAPAI						
2016	APMS - Taxiway Pavement Preservation	Crack Seal and Rubberized Asphalt Emulsion Seal Coat RW523BG 10.	\$2,867	\$319	\$0	\$3,186
2016	APMS - Apron Pavement Preservation	Crack Seal and Rubberized Asphalt Emulsion Seal Coat A01BG 10.	\$17,821	\$1,980	\$0	\$19,801
2016	APMS - Runway Pavement Preservation	Crack Seal and Rubberized Asphalt Emulsion Seal Coat RW523BG 10.	\$97,899	\$10,878	\$0	\$108,777
Airport Total:			\$118,587	\$13,177	\$0	\$131,764
BENSON MUNI - COCHISE						
2014	Runway Vertical/Visual Guidance System, Install/Upgrade	Upgrade REILS.	\$54,000	\$6,000	\$0	\$60,000
2014	Land For Protection (Safety Areas), Acquire	Complete EA for land acquisition for extension of Rwy 10.	\$45,000	\$5,000	\$0	\$50,000
2015	Heliport, Construct	Design new helipad, approx. 75 ft. x 75 ft.	\$45,000	\$5,000	\$0	\$50,000
2016	Heliport, Construct	Construct helipad(s) 75 ft x 75 ft adjacent to east apron.	\$112,500	\$12,500	\$0	\$125,000
2016	APMS - Apron Pavement Preservation	Crack Seal and Rubberized Asphalt Emulsion Seal Coat TWABN 10.	\$74,433	\$8,270	\$0	\$82,703
2016	Land:Acquire Land/Easement For Approaches	Acquire land (Parcel 208-21 approx. 32 acres) to provide for approaches/extension of Rwy 10/Twy.	\$11,175	\$11,175	\$227,650	\$250,000
2016	APMS - Apron Pavement Preservation	Crack Seal and Rubberized Asphalt Emulsion Seal Coat TH01BN 10.	\$26,713	\$2,968	\$0	\$29,681
2017	Master Plans	Update master plan.	\$135,000	\$15,000	\$0	\$150,000
2017	Equipment:Acquire Security Equipment/Install Perimeter Fencing [Not Part 107] - Standards	Install airport perimeter/wildlife fence & gates (approx. 21,000 lf).	\$33,525	\$33,525	\$682,950	\$750,000
2018	Planning:<Conduct/Update> <Airport Master Plan Study {ALP, EA, etc.}>	Update master plan.	\$7,822	\$7,823	\$159,355	\$175,000
Airport Total:			\$545,168	\$107,261	\$1,069,955	\$1,722,384
BISBEE DOUGLAS INTL - COCHISE						
2014	Planning:<Conduct/Update> <Airport Master Plan Study {ALP, EA, etc.}>	Update master plan.	\$5,588	\$5,587	\$113,825	\$125,000
2014	Taxiway, Rehabilitate	Design Twy A recon. (3 phases).	\$180,000	\$20,000	\$0	\$200,000
2015	Equipment:Acquire Equipment (e.g., Sweepers, etc.) - Standards	Acquire safety equipment/sweeper.	\$5,364	\$5,364	\$109,272	\$120,000
2015	Taxiways:Rehabilitate Taxiway - Reconstruct	Recon. Twy A, Ph. 1 (6,000 sy) - south of main hangar and a section of apron just north of the main hangar.	\$15,645	\$15,645	\$318,710	\$350,000
2016	Taxiways:Rehabilitate Taxiway - Reconstruct	Recon. Twy A , Ph. 2 - from start of PCCP south of Twy A-3 to the intersection of A-4 (2,100 ft x 75 ft, 17,500 sy).	\$53,640	\$53,640	\$1,092,720	\$1,200,000

Airport Projects - by Airport

Airport Name - County

FY	Project Component	Project Description	State Share	Local Share	Federal Share	Project Total
BISBEE DOUGLAS INTL - COCHISE						
2016	Taxiway, Rehabilitate	Design Twy A-1 recon. from Rwy 17/35 to apron. Master plan will determine if new alignment is warranted.	\$91,800	\$10,200	\$0	\$102,000
2017	Taxiways:Rehabilitate Taxiway - Reconstruct	Recon. Twy A-1 from Rwy 17/35 to apron. Master plan will determine if new alignment is warranted.	\$58,110	\$58,110	\$1,183,780	\$1,300,000
2017	Taxiways:Rehabilitate Taxiway - Reconstruct	Recon. Twy A, Ph. 3 - from the intersection of A4 to the north end. (1,700 ft x 75 ft, 14,200 sy).	\$42,465	\$42,465	\$865,070	\$950,000
2018	Runways:Rehabilitate Runway - Reconstruct	Recon. current Rwy 17-35 displaced threshold, or into a blast pad if warranted by master plan.	\$13,410	\$13,410	\$273,180	\$300,000
2018	APMS - Runway Pavement Preservation	Crack Seal and Rubberized Asphalt Emulsion Seal Coat RW1735BD 10.	\$231,703	\$25,745	\$0	\$257,448
2018	Runway, Rehabilitate	Design current Rwy 17/35 displaced threshold recon. or into a blast pad if warranted by master plan.	\$27,000	\$3,000	\$0	\$30,000
Airport Total:			\$724,725	\$253,166	\$3,956,557	\$4,934,448
BISBEE MUNI - COCHISE						
2014	Runways:Install Runway <Vertical/Visual> Guidance System [PAPI/VASI/REIL/ALS/etc.] - Standards	Install PAPIs on Rwy 17/35 (constr. only).	\$8,940	\$8,940	\$182,120	\$200,000
2015	Taxiways:Construct Taxiway [Includes Relocation]	Relocate Twy A (5,900 ft x 25 ft) to 225 ft from Rwy centerline - Ph. 1 (constr. only).	\$35,760	\$35,760	\$728,480	\$800,000
2016	APMS - Apron Pavement Preservation	Thin Asphalt Overlay/PFC A01BM 10.	\$135,352	\$15,039	\$0	\$150,391
2016	Taxiways:Construct Taxiway [Includes Relocation]	Relocate Twy A (5,900 ft x 25 ft) to 225 ft from Rwy centerline - Ph. 2 (constr. only).	\$64,815	\$64,815	\$1,320,370	\$1,450,000
2017	Apron:Construct Apron - Capacity	Constr. 3 taxilanes (300 ft x 25 ft) south of terminal apron (design & constr.).	\$17,880	\$17,880	\$364,240	\$400,000
2017	Apron:Rehabilitate Apron - Reconstruction	Rehab. apron (7,250 sy) adjacent to terminal (constr. only).	\$26,820	\$26,820	\$546,360	\$600,000
Airport Total:			\$289,567	\$169,254	\$3,141,570	\$3,600,391
BUCKEYE MUNI - MARICOPA						
2014	APMS - Runway Pavement Preservation	Mill and Replace PFC RW1735BK 10.	\$808,570	\$89,841	\$0	\$898,411
2014	Other:<Construct/Improve/Repair> <Fuel Farm/Utilities> [MAP] - Other	Design fire suppression water system.	\$15,645	\$15,645	\$318,710	\$350,000
2015	Other:<Construct/Improve/Repair> <Fuel Farm/Utilities> [MAP] - Other	Constr. fire suppression water system, Ph. 1.	\$125,160	\$125,160	\$2,549,680	\$2,800,000
2016	Other:<Construct/Improve/Repair> <Fuel Farm/Utilities> [MAP] - Other	Constr. fire suppression water system, Ph. 2.	\$98,340	\$98,340	\$2,003,320	\$2,200,000
2017	APMS - Apron Pavement Preservation	Thin Asphalt Overlay/PFC A01BK 10.	\$161,862	\$17,985	\$0	\$179,847
2017	APMS - Taxiway Pavement Preservation	Thin Asphalt Overlay/PFC TWABK 10.	\$543,442	\$60,383	\$0	\$603,825
2017	APMS - Apron Pavement Preservation	Crack Seal and Rubberized Asphalt Emulsion Seal Coat A01BK 20.	\$45,348	\$5,039	\$0	\$50,387

Airport Projects - by Airport

Airport Name - County

FY	Project Component	Project Description	State Share	Local Share	Federal Share	Project Total
BUCKEYE MUNI - MARICOPA						
2017	Runway MIRL/HIRL, Install	Design RSAT Projects - Includes airfield lighting, access control, and RSA grading.	\$135,000	\$15,000	\$0	\$150,000
2017	Land:Acquire Land/Easement For Approaches	Land acquisition, Ph. 1 (approx. 37 acres). The land acquisition includes a portion of one or more of the following parcels: 504-15-130D, 504-15-029J, and 504-15-029K.	\$44,700	\$44,700	\$910,600	\$1,000,000
2018	Land:Acquire Land/Easement For Approaches	Land acquisition, Ph. 2 (approx. 37 acres). The land acquisition includes a portion of one or more of the following parcels: 504-15-130D, 504-15-029J, and 504-15-029K	\$44,700	\$44,700	\$910,600	\$1,000,000
2018	Runways:<Construct/Extend/Improve> Runway Safety Area [Primary Airports] - Safety/Security	Constr. RSAT Projects - Includes airfield lighting, access control, and RSA grading.	\$67,050	\$67,050	\$1,365,900	\$1,500,000
Airport Total:			\$2,089,817	\$583,843	\$8,058,810	\$10,732,470
CASA GRANDE MUNI - PINAL						
2014	Heliport:<Construct/Expand/Improve/Modify/Rehabilitate> Helipad/Heliport - Capacity	Design/constr. helicopter apron and vehicle access/parking (10,000 sy) and utilities (12-AIR-2908).	\$6,258	\$6,258	\$127,484	\$140,000
2014	Apron:Construct Apron - Standards	Design/constr. 11,500 sy apron @ 72,000 DWL expansion of SW apron (12-AIR-2896).	\$38,442	\$38,442	\$783,116	\$860,000
2014	Land:Acquire Land/Easement For Approaches	Purchase approx. 194 acres required for planned Rwy extension/displacement; parallel Twy constr.; drainage ditch & ILS relocation (13-AIR-3002). [Due to large number, parcel numbers are included in separate document].	\$156,450	\$156,450	\$3,187,100	\$3,500,000
2014	Equipment:Acquire Security Equipment/Install Perimeter Fencing [Not Part 107] - Standards	Purchase and installation of security cameras for terminal and hangar areas.	\$2,235	\$2,235	\$45,530	\$50,000
2014	Wind Cone, Install/Upgrade	Replace primary windcone. Windcone was unintentionally omitted from the Twy/Rwy lighting sytem project which was recently funded by FAA.	\$13,500	\$1,500	\$0	\$15,000
2014	Taxiway, Rehabilitate	Design recon of Twy E 22,500 sy (2700 ft x75 ft) -- Mill, Remove & Replace	\$27,000	\$3,000	\$0	\$30,000
2014	APMS - Taxiway Pavement Preservation	Thin Asphalt Overlay/PFC TWACG 10.	\$409,562	\$45,507	\$0	\$455,069
2014	Terminal Development:<Improve/Modify/Rehabilitate> Terminal Building - Capacity	Expand terminal area parking lot (6,660 sy (150 ft x 400 ft), relocate 500 ft of security fencing and utilities (200 ft water/electric & one fire hydrant) (12-AIR-2904).	\$22,350	\$22,350	\$455,300	\$500,000
2015	Other:Improve Airport <Drainage/Erosion Control/Miscellaneous Improvements> - Standards	Design/constr. AC wash rack (70 ft x 70 ft) within west apron area.	\$14,125	\$14,125	\$287,750	\$316,000
2015	Ground Transportation:<Construct/Expand/Improve/Modify/Rehabilitate> Service Road - Other	Design/constr.(19,100 ft x 12 ft) perimeter service road (approx.14,000 ft) security fence (13-AIR-2912).	\$62,982	\$62,983	\$1,283,035	\$1,409,000

Airport Projects - by Airport

Airport Name - County

FY	Project Component	Project Description	State Share	Local Share	Federal Share	Project Total
CASA GRANDE MUNI - PINAL						
2015	Other:Improve Airport <Drainage/Erosion Control/Miscellaneous Improvements> - Standards	Relocate (80 ft x 15,000 ft) drainage ditch running from NE to SW portion of airport.	\$80,460	\$80,460	\$1,639,080	\$1,800,000
2015	Taxiways:Rehabilitate Taxiway - Reconstruct	Reconstruct 22,500 sy (2,700 ft x 75 ft) Twy E (Mill, remove & replace). Twy E is listed as Twy B on ADOT's Pavement Management System maps.	\$10,728	\$10,728	\$218,544	\$240,000
2016	Taxiways:Extend Taxiway - Capacity	Design/constr./relocate (3,850 ft x 35 ft) Twy B & connecting Twys @ 74,000 DWL (13-AIR-2895). Twy B is listed as Twy A on ADOT's pavement management system (APMS).	\$179,202	\$179,203	\$3,650,595	\$4,009,000
2016	Runways:Rehabilitate Runway - Reconstruct	Design/constr./rehab. of old portion of Rwy 5/23 (5,280 ft x 100 ft) and terminal apron (11,620 sy)(15-AIR-2931).	\$44,700	\$44,700	\$910,600	\$1,000,000
2016	Runways:<Construct/Extend/Improve> Runway Safety Area [Primary Airports] - Safety/Security	Design/constr. 850 ft x 100 ft displacement/shift of Rwy 23 threshold and associated Rwy/Twy lighting/markings (13-AIR-1615).	\$22,350	\$22,350	\$455,300	\$500,000
2016	Runways:Extend Runway- Capacity	Design/constr. 3,850 ft x 100 ft @ 74,000 lbs DWL Rwy extension to SW (13-AIR-1612).	\$268,200	\$268,200	\$5,463,600	\$6,000,000
2017	Apron:Construct Apron - Capacity	Design/constr. 16,500 sy N side apron (15-AIR-2915).	\$69,553	\$69,553	\$1,416,894	\$1,556,000
2017	Ground Transportation:<Construct/Expand/Improve/Modify/Rehabilitate> Access Road - Other	Design/constr. 2,000 ft x 30 ft access road (N side) and 6,000 sy parking lot (15-AIR-2917).	\$35,760	\$35,760	\$728,480	\$800,000
2017	Runways:Install <Full/Partial> Instrument Approach Aid - Standards	Design/constr. relocated segmented circle and lighted windsock to N side of Rwy 5/23 center.	\$6,705	\$6,705	\$136,590	\$150,000
2017	Taxiways:Construct Taxiway - Capacity	Design/constr. 1,350 ft x 34 ft Twy F to serve N side apron (15-AIR-2916).	\$37,593	\$37,592	\$765,815	\$841,000
2017	Apron, Construct (New)	Constr. 16,000 sy apron @ NE corner of extg. Terminal apron with minimum weight bearing of 74,000 DWL (15-AIR-2915).	\$360,000	\$40,000	\$0	\$400,000
2017	Runways:Install <Full/Partial> Instrument Approach Aid - Standards	Relocate extg. MALSR & ILS (14-AIR-2914).	\$58,110	\$58,110	\$1,183,780	\$1,300,000
2018	Taxiways:Construct Taxiway - Capacity	Design/constr. two high speed and one right-angle Twy for Rwy 5/23 totaling 1,600 ft x 50 ft @ 74,000 DWL.	\$71,431	\$71,430	\$1,455,139	\$1,598,000
2018	Runways:Construct Runway - Capacity	Design/constr. 3,880 ft x 75 ft non-instrument parallel Rwy for light AC 600 ft N of extg. Rwy 5/23.	\$161,322	\$161,323	\$3,286,355	\$3,609,000
2018	Taxiways:Construct Taxiway - Capacity	Design/constr. 4,700 ft x 35 ft lighted parallel Twy & connector Twys to serve shorter N side parallel Rwy 5/23.	\$116,220	\$116,220	\$2,367,560	\$2,600,000
Airport Total:			\$2,275,238	\$1,555,184	\$29,847,647	\$33,678,069

Airport Projects - by Airport

Airport Name - County

FY	Project Component	Project Description	State Share	Local Share	Federal Share	Project Total
CHANDLER MUNI - MARICOPA						
2014	Planning:Conduct <Environmental Assessment/Environmental Impact Statement/Feasibility> <Study/Update>	EA for planned storm drain management.	\$3,330	\$3,330	\$67,840	\$74,500
2014	Other:Install <Guidance/Other> Signs [Not Part 139] - Standards	Design only replacement/modification of approx. 75 airfield signs.	\$4,068	\$4,067	\$82,865	\$91,000
2014	Other:Improve Airport <Drainage/Erosion Control/Miscellaneous Improvements> - Standards	Install 4 pumps, 4000 feet of hose and 10,000 bird balls.	\$1,319	\$1,318	\$26,863	\$29,500
2014	Apron:Construct Apron - Capacity	Constr. Ph. 1 of N Apron Ph. 2 - 1,260 lf x 35 lf apron area access taxilane (5,050 sf).	\$47,606	\$47,605	\$969,789	\$1,065,000
2014	Obstructions, Light/Mark/Remove (Safety Areas)	Safety Area drainage analysis including data collection, topo survey, environmental analysis, and alternatives evaluation.	\$67,500	\$7,500	\$0	\$75,000
2015	Airport Drainage, Improve	Design storm water management project.	\$303,750	\$33,750	\$0	\$337,500
2015	APMS - Taxiway Pavement Preservation	Thin Asphalt Overlay/PFC TWACH 10.	\$755,390	\$83,932	\$0	\$839,322
2015	APMS - Runway Pavement Preservation	Thin Asphalt Overlay/PFC RW4L22RCH 10.	\$392,756	\$43,639	\$0	\$436,395
2015	Other:Install <Guidance/Other> Signs [Not Part 139] - Standards	Constr. replacement/modification of approx. 75 airfield signs.	\$30,552	\$30,553	\$622,395	\$683,500
2016	Other:Improve Airport <Drainage/Erosion Control/Miscellaneous Improvements> - Standards	Constr. storm water management in areas 1 and 3.	\$79,275	\$79,276	\$1,614,949	\$1,773,500
2016	Other:Install Miscellaneous <NAVAIDS/Approach Aids> - Standards	Replace federal contract tower transceivers (Will replace all four transceivers currently operating in ATCT).	\$12,784	\$12,784	\$260,432	\$286,000
2017	Other:Improve Airport <Drainage/Erosion Control/Miscellaneous Improvements> - Standards	Constr. storm water management in areas 4 and 7.	\$12,069	\$12,069	\$245,862	\$270,000
2017	Planning:Conduct <Environmental Assessment/Environmental Impact Statement/Feasibility> <Study/Update>	EA for planned Twy B extension from extg. Twy N to approach end of Rwy 04L including connectors.	\$12,471	\$12,472	\$254,057	\$279,000
2017	Other:Improve Airport <Drainage/Erosion Control/Miscellaneous Improvements> - Standards	Constr. storm water management in area 2.	\$82,717	\$82,718	\$1,685,065	\$1,850,500
2018	Taxiway, Construct (New)	Design: Twy B extension from Twy N to Twy H (2700 ft x 40 ft (approx. 12,000 sy) [includes Twy Lights, signs & grading, etc].	\$368,550	\$40,950	\$0	\$409,500
2018	Apron:Construct Apron - Capacity	Constr. Ph. 2 of N apron Ph 2 - approx. 540 ft x 275 ft apron area (16,450 sy).	\$142,325	\$142,325	\$2,899,350	\$3,184,000
2018	APMS - Taxiway Pavement Preservation	Thin Asphalt Overlay/PFC TWCCH 10.	\$394,124	\$43,792	\$0	\$437,916
Airport Total:			\$2,710,586	\$682,080	\$8,729,467	\$12,122,133

Airport Projects - by Airport

Airport Name - County

FY	Project Component	Project Description	State Share	Local Share	Federal Share	Project Total
CHINLE MUNI - APACHE						
2014	Runways:Rehabilitate Runway - Reconstruct	Recon. Rwy 18/36 (6,900 ft x 60 ft) - Ph. 1 (design & constr.).	\$0	\$98,340	\$1,001,660	\$1,100,000
2014	Runways:Install Runway <Vertical/Visual> Guidance System [PAPI/VASI/REIL/ALS/etc.] - Standards	Replace edge lights and PAPIs.	\$0	\$42,912	\$437,088	\$480,000
2014	Apron:Rehabilitate Apron - Reconstruction	Recon. apron (500 ft x 200 ft).	\$0	\$78,672	\$801,328	\$880,000
2015	Runways:Rehabilitate Runway - Reconstruct	Recon. Rwy 18/36 (6,900 ft x 60 ft) - Ph. 2 (constr. only).	\$0	\$107,280	\$1,092,720	\$1,200,000
2016	Runways:Rehabilitate Runway - Reconstruct	Recon. Rwy 18/36 (6,900 ft x 60 ft) - Ph. 3 (constr. only).	\$0	\$116,220	\$1,183,780	\$1,300,000
2017	Taxiways:Rehabilitate Taxiway - Reconstruct	Recon. bypass Twys on each end of Rwy 18/36 (575 ft x 35 ft).	\$0	\$35,760	\$364,240	\$400,000
2018	Buildings:<Construct/Expand/Imp/Modify/Rehabilitate> <Snow Removal Equipment/Chemical Storage Building/etc.> - Standards	Constr. a SRE Building (40 ft x 50 ft).	\$0	\$31,290	\$318,710	\$350,000
Airport Total:			\$0	\$510,474	\$5,199,526	\$5,710,000
CIBECUE - NAVAJO						
2014	Planning:Conduct <Environmental Assessment/Environmental Impact Statement/Feasibility> <Study/Update>	Update EA for new airport.	\$0	\$20,115	\$204,885	\$225,000
2016	Runways:Construct Runway - Capacity	Constr. Rwy (5,100 ft x 75 ft) including bypass Twy (840 ft x 35 ft), connector Twy (300 ft x 35 ft), apron (15,584 sy) and access road (5,460 ft x 25 ft) - Ph. 1 grading and drainage (constr. only).	\$0	\$607,920	\$6,192,080	\$6,800,000
2017	Runways:Construct Runway - Capacity	Constr. Rwy (5,100 ft x 75 ft) including bypass Twy (840 ft x 35 ft), connector Twy (300 ft x 35 ft), apron (15,584 sy) and access road (5,460 ft x 25 ft) - Ph. 2 paving (constr. only).	\$0	\$317,370	\$3,232,630	\$3,550,000
2018	Runways:Install Runway Lighting (HIRL, MIRL, TDZ, LAHSO Or CL) - Standards	Install Rwy 1/19 edge lighting and visual aids including utilities - Ph. 3 lighting (constr. only).	\$0	\$53,640	\$546,360	\$600,000
Airport Total:			\$0	\$999,045	\$10,175,955	\$11,175,000
COCHISE COLLEGE - COCHISE						
2014	Taxiway, Rehabilitate	Recon. parallel Twy A (5,622 ft x 25 ft), Recon. Rwy 23 displaced threshold (251 ft x 60 ft) and install MITL on parallel Twy A and connectors.	\$1,350,000	\$150,000	\$0	\$1,500,000
2016	Weather Reporting Equipment, Install (New)	Install AWOS III P/T on north side of Rwy.	\$283,500	\$31,500	\$0	\$315,000
2017	Equipment:Acquire Security Equipment/Install Perimeter Fencing [Not Part 107] - Standards	Install perimeter fencing and gates (19,500 lf).	\$27,938	\$27,937	\$569,125	\$625,000
Airport Total:			\$1,661,438	\$209,437	\$569,125	\$2,440,000

Airport Projects - by Airport

Airport Name - County

FY	Project Component	Project Description	State Share	Local Share	Federal Share	Project Total
COCHISE COUNTY - COCHISE						
2014	Taxiway, Rehabilitate	Recon. Twy A, Ph. 2: Design the completion of the parallel Twy A to the southwest along its original alignment with lighting (3,400 ft x 35 ft).	\$46,800	\$5,200	\$0	\$52,000
2014	Planning:<Conduct/Update> <Airport Master Plan Study {ALP, EA, etc.}>	Conduct master plan update.	\$5,588	\$5,587	\$113,825	\$125,000
2015	Taxiways:Rehabilitate Taxiway - Reconstruct	Recon. Twy A, Ph. 2: Completion of the parallel Twy A to the southwest along its original alignment with lighting as an add alternate (3,400 ft x 35 ft).	\$26,820	\$26,820	\$546,360	\$600,000
2015	Runway, Rehabilitate	Design Rwy 14/32 recon. of turf crosswind Rwy 14/32.	\$135,000	\$15,000	\$0	\$150,000
2015	Apron, Rehabilitate	Design the rehab. of the apron and study long-term strategy on new apron in 2-3 phases.	\$72,000	\$8,000	\$0	\$80,000
2016	Taxiways:Install Taxiway Lighting (e.g., SMGCS, Reflectors, MITL) - Standards	Recon. Twy A lighting on entire length of Twy.	\$17,880	\$17,880	\$364,240	\$400,000
2016	Runways:Rehabilitate Runway - Reconstruct	Recon. Rwy 14-32, Ph. 1 (3,400 ft x 75 ft).	\$29,055	\$29,055	\$591,890	\$650,000
2017	Apron:Rehabilitate Apron - Reconstruction	Rehab. apron section 10, Ph. 1 (2,600 sy).	\$10,058	\$10,057	\$204,885	\$225,000
2017	Runways:Rehabilitate Runway - Reconstruct	Recon. Rwy 14/32, Ph. 2 (2,550 ft x 75 ft).	\$18,998	\$18,997	\$387,005	\$425,000
2018	Apron:Rehabilitate Apron - Reconstruction	Rehab. apron section 20, Ph. 2 (18,300 sy).	\$26,820	\$26,820	\$546,360	\$600,000
2018	Buildings:<Construct/Expand/Improve/Modify/Rehabilitate> Building - Standards	Constr. modular hangar (5,000 sf).	\$11,175	\$11,175	\$227,650	\$250,000
Airport Total:			\$400,194	\$174,591	\$2,982,215	\$3,557,000
COLORADO CITY MUNI - MOHAVE						
2014	Land:Acquire <Land/Easement> For Development/Relocation	Acquire 172 +/- acres of BLM land around the Rwys including Parcel 7: 404-44-005, 25.4 ac; Parcel 8: 404-27-044, 146.9 ac.; Parcel 11: 404-44-004, .80 ac.; and Parcel 12: 404-44-003, 4.7 ac. - Ph. 1.	\$4,470	\$4,470	\$91,060	\$100,000
2014	APMS - Apron Pavement Preservation	Thin Asphalt Overlay/PFC A01CL 10.	\$98,920	\$10,991	\$0	\$109,911
2014	APMS - Runway Pavement Preservation	Thin Asphalt Overlay/PFC RW220CL 10.	\$387,056	\$43,006	\$0	\$430,062
2014	Taxiways:Rehabilitate Taxiway - Reconstruct	Crack seal, fog seal, and remark Twy A (820 ft x 35 ft) and B (2,766 ft x 35 ft) and connecting Twys (2 - 245 ft x 35 ft, 3 - 191 ft x 35 ft, and 1 - 191 ft x 103 ft) (design & constr.).	\$8,940	\$8,940	\$182,120	\$200,000
2015	Land:Acquire <Land/Easement> For Development/Relocation	Acquire 143 +/- acres of private land around the Rwys including Parcel 4: 404-27-043, 12.2 ac.; Parcel 5: 404-27-042, 89.2 ac.; Parcel 9: 404-27-077, 9.1 ac.; and Parcel 10: 404-27-042, 25.9 ac. - Ph. 2.	\$35,760	\$35,760	\$728,480	\$800,000
2016	Equipment:Acquire Security Equipment/Install Perimeter Fencing [Not Part 107] - Standards	Acquire and install wildlife/security perimeter fence (approx. 40,900 lf).	\$46,935	\$46,935	\$956,130	\$1,050,000
2017	APMS - Taxiway Pavement Preservation	Crack Seal and Rubberized Asphalt Emulsion Seal Coat TWBCL 10.	\$58,353	\$6,484	\$0	\$64,837
2017	Taxiways:Extend Taxiway - Capacity	Constr. Twy A from Twy A3 to end of Rwy 29 (1,890 ft x 35 ft).	\$27,938	\$27,937	\$569,125	\$625,000

Airport Projects - by Airport

Airport Name - County

FY	Project Component	Project Description	State Share	Local Share	Federal Share	Project Total
COLORADO CITY MUNI - MOHAVE						
2018	Other:Install Miscellaneous <NAVAIDS/Approach Aids> - Standards	Install lighted wind cone and segmented circle.	\$4,470	\$4,470	\$91,060	\$100,000
Airport Total:			\$672,842	\$188,993	\$2,617,975	\$3,479,810
COOLIDGE MUNI - PINAL						
2014	Runways:Install Runway <Vertical/Visual> Guidance System [PAPI/VASI/REIL/ALS/etc.] - Standards	Design Rwy 5/23 vertical/visual guidance system, PAPI/REIL.	\$1,341	\$1,341	\$27,318	\$30,000
2014	Taxiways:Construct Taxiway [Includes Relocation]	Design Twy B-4 approx 75 ft x 1150 ft.	\$3,129	\$3,129	\$63,742	\$70,000
2016	Taxiways:Construct Taxiway [Includes Relocation]	Const.- Twy B-4. approx. 75 ft x 1,150 ft; including MITL.	\$26,820	\$26,820	\$546,360	\$600,000
2016	APMS - Runway Pavement Preservation	Thin Asphalt Overlay/PFC RW523CM 10C.	\$511,870	\$56,874	\$0	\$568,744
2017	Runways:Rehabilitate Runway <Lighting/Electrical Vault>	Rwy 5/23 rehab./const. MIRL/vertical/visual guidance system, PAPI/REIL, Phase 3	\$35,760	\$35,760	\$728,480	\$800,000
2017	Runways:Install Runway <Vertical/Visual> Guidance System [PAPI/VASI/REIL/ALS/etc.] - Standards	Const. Rwy vertical/visual guidance system, const. - Rwy 17/35 PAPI.	\$8,940	\$8,940	\$182,120	\$200,000
2018	Buildings:<Construct/Expand/Improve/Modify/Rehabilitate> Building - Standards	Design and constr. security fencing, approx. 16,000 lf.	\$28,608	\$28,608	\$582,784	\$640,000
2018	APMS - Runway Pavement Preservation	Thin Asphalt Overlay/PFC RW523CM 10NS.	\$553,639	\$61,515	\$0	\$615,154
Airport Total:			\$1,170,107	\$222,987	\$2,130,804	\$3,523,898
COTTONWOOD - YAVAPAI						
2014	Buildings:<Construct/Expand/Improve/Modify/Rehabilitate> Building - Standards	Design and constr. 10 unit T-Hangars.	\$12,292	\$12,293	\$250,415	\$275,000
2014	Apron:Rehabilitate Apron - Reconstruction	Remove and replace pavement on apron. Approx. 56,000 sy of pavement.	\$44,700	\$44,700	\$910,600	\$1,000,000
2014	Other:Environmental Mitigation	Design and constr. AC wash rack.	\$8,940	\$8,940	\$182,120	\$200,000
2014	Planning:Conduct <Environmental Assessment/Environmental Impact Statement/Feasibility> <Study/Update>	Conduct EA to purchase 11.6 acres near the airport for future expansion. APNs 406-08-003C, 406-08-003A, 406-08-005M.	\$8,940	\$8,940	\$182,120	\$200,000
2014	Equipment:Install Weather Reporting Equipment {Describe, e.g., AWOS } - Standards	Install AWOS.	\$4,917	\$4,917	\$100,166	\$110,000
2014	Other:<Construct/Rehabilitate> Parking Lot [Non Revenue Producing-Non Hub/MAP] - Other	Design and constr. additional vehicle parking near terminal building.	\$9,387	\$9,387	\$191,226	\$210,000
2014	Runways:Extend Runway- Capacity	Publish declared distances and remark Rwy 32 to allow additional 300 ft of Rwy for AC when taking off.	\$2,235	\$2,235	\$45,530	\$50,000
2016	APMS - Apron Pavement Preservation	Crack Seal and Rubberized Asphalt Emulsion Seal Coat A01CT 20.	\$67,953	\$7,550	\$0	\$75,503
2016	Land:Acquire <Land/Easement> For Development/Relocation	Purchase approx. 11.6 acres. Portions of APNs 406-08-003C, 406-08-003A, 406-08-005M.	\$30,172	\$30,173	\$614,655	\$675,000

Airport Projects - by Airport

Airport Name - County

FY	Project Component	Project Description	State Share	Local Share	Federal Share	Project Total
COTTONWOOD - YAVAPAI						
2016	Runways:Extend Runway- Capacity	Update ALP to show Rwy 32 extension, conduct environmental review, and design the 300 ft extension of Rwy 32.	\$3,576	\$3,576	\$72,848	\$80,000
2016	APMS - Taxiway Pavement Preservation	Thin Asphalt Overlay/PFC TWACT 10.	\$203,105	\$22,567	\$0	\$225,672
2017	Land:Acquire <Land/Easement> For Development/Relocation	Purchase approx. 11.6 acres to allow for future airport development. Portions of APNs 406-08-003C, 406-08-003A, 406-08-005M.	\$30,172	\$30,173	\$614,655	\$675,000
2017	Runways:Extend Runway- Capacity	Constr. Rwy 32 extension of 300 ft.	\$16,316	\$16,315	\$332,369	\$365,000
Airport Total:			\$442,705	\$201,766	\$3,496,704	\$4,141,175
DOUGLAS MUNI - COCHISE						
2014	Perimeter Fencing - Barbed Wire, Install (New)	Install 5,280 ft (1 mile) of perimeter security fencing, Ph. 2.	\$180,000	\$20,000	\$0	\$200,000
2015	Runway, Construct	Recon. of Rwy 3/21 (5,760 ft x 75 ft).	\$1,080,000	\$120,000	\$0	\$1,200,000
2015	Perimeter Fencing - Barbed Wire, Install (New)	Install 5,000 lf of security fencing, Ph. 3.	\$270,000	\$30,000	\$0	\$300,000
2015	Runway MIRL/HIRL, Install	Design Rwy lighting, MIRL (5,760 ft x 75 ft), apron lighting, beacon, segmented circle & windcone.	\$63,000	\$7,000	\$0	\$70,000
2016	Runway MIRL/HIRL, Install	Rehab. Rwy lighting, MIRL (5,760 ft x 75 ft), apron lighting, beacon, segmented circle and windcone.	\$630,000	\$70,000	\$0	\$700,000
2016	Perimeter Fencing - Barbed Wire, Install (New)	Install 5,280 linear feet of security fencing, Ph. 4.	\$270,000	\$30,000	\$0	\$300,000
2016	APMS - Apron Pavement Preservation	Thin Asphalt Overlay/PFC A02DM 10.	\$411,905	\$45,767	\$0	\$457,672
2016	APMS - Apron Pavement Preservation	Crack Seal and Rubberized Asphalt Emulsion Seal Coat A01DM 10.	\$48,996	\$5,444	\$0	\$54,440
2017	Auto Parking, Construct	Design/constr. parking lot with lighting (300 ft x 300 ft).	\$270,000	\$30,000	\$0	\$300,000
2018	Terminal, Construct/Expand	Design/constr. a terminal/office (50 ft x 50 ft).	\$450,000	\$50,000	\$0	\$500,000
Airport Total:			\$3,673,901	\$408,211	\$0	\$4,082,112
ELOY MUNI - PINAL						
2014	Other:Improve Airport <Drainage/Erosion Control/Miscellaneous Improvements> - Standards	Design of miscellaneous drainage improvements to be determined by the ongoing airport drainage study.	\$2,794	\$2,794	\$56,912	\$62,500
2015	Planning:Conduct <Environmental Assessment/Environmental Impact Statement/Feasibility> <Study/Update>	Prepare an EA for the relocation of Twy A to meet or exceed FAA design standards.	\$13,410	\$13,410	\$273,180	\$300,000
2015	Taxiways:Construct Taxiway - Capacity	Design of 3 Twys (approx. 7,000 SY) to serve new hangars located on the southwest side of the airport directly west of the extg. hangars.	\$5,588	\$5,587	\$113,825	\$125,000
2015	Other:Improve Airport <Drainage/Erosion Control/Miscellaneous Improvements> - Standards	Const. of miscellaneous drainage improvements to be determined by the ongoing airport drainage study.	\$22,350	\$22,350	\$455,300	\$500,000

Airport Projects - by Airport

Airport Name - County

FY	Project Component	Project Description	State Share	Local Share	Federal Share	Project Total
ELOY MUNI - PINAL						
2016	Taxiways:Construct Taxiway - Capacity	design of 3 Twys (approx. 7,000 sy) to serve new hangars located on the southwest side of the airport directly west of the extg. Hangars.	\$44,700	\$44,700	\$910,600	\$1,000,000
2017	Taxiways:Construct Taxiway [Includes Relocation]	Design the relocation of Twy A (17,000 sy)to meet or exceed current FAA design standards. The project also includes new MITL. Ph. 2.	\$13,969	\$13,969	\$284,562	\$312,500
2018	Taxiways:Construct Taxiway [Includes Relocation]	Relocation of Twy A (17,000 sy) to meet or exceed current FAA design standards. The project also includes new MITL. Ph. 2.	\$111,750	\$111,750	\$2,276,500	\$2,500,000
Airport Total:			\$214,561	\$214,560	\$4,370,879	\$4,800,000
ERIC MARCUS MUNI - PIMA						
2014	Other:Install <Guidance/Other> Signs [Not Part 139] - Standards	Installation of lighted airfield directional signage at both Rwy/Twy Intersections.	\$1,788	\$1,788	\$36,424	\$40,000
2014	Runways:Install Runway Lighting (HIRL, MIRL, TDZ, LAHSO Or CL) - Standards	Replace 8 existing REILS with upgraded, low-profile, bi-directional units that conform with AC No.150/5345-46B.	\$894	\$894	\$18,212	\$20,000
2015	Apron:Rehabilitate Apron - Reconstruction	Design joint seal for approx. 18.74 acres of apron surrounding the extg. hangars.	\$1,564	\$1,565	\$31,871	\$35,000
2016	Equipment:Acquire Security Equipment/Install Perimeter Fencing [Not Part 107] - Standards	Design & install 17,500 lf of 6 ft chain link security fencing with three-strand barbed wire.	\$38,576	\$38,576	\$785,848	\$863,000
Airport Total:			\$42,822	\$42,823	\$872,355	\$958,000
ERNEST A. LOVE FIELD - YAVAPAI						
2014	Equipment:Acquire Aircraft Rescue & Fire Fighting Vehicle [Required By Part 139 Only] - Safety/Security	Acquire new ARFF Vehicle (Index B).	\$25,000	\$25,000	\$950,000	\$1,000,000
2014	Other:Environmental Mitigation	Design for construction of secondary containment structures at the self-serve and Northaire fuel tanks, and depressed outfall headwall and oil/water separator at the USFS service ramp.	\$750	\$750	\$28,500	\$30,000
2014	Other:<Light/Mark/Remove> Obstructions - Standards	Design for mitigation of on-airport obstructions to the FAR Part 77 surfaces - entire airport.	\$2,500	\$2,500	\$95,000	\$100,000
2014	APMS - Taxiway Pavement Preservation	Thin Asphalt Overlay/PFC TWCPR 10.	\$857,980	\$95,331	\$0	\$953,311
2015	Taxiway, Rehabilitate	Design thin mill and asphalt overlay/PFC taxilanes at Bottleneck hangar area (2010 pavement management report TH02PR), 5,300 ft x 75 ft.	\$90,000	\$10,000	\$0	\$100,000
2015	Other:Environmental Mitigation	Constr. of secondary containment structures at the self-serve and Northaire fuel tanks, and depressed outfall headwall and oil/water separator at the USFS service ramp.	\$3,750	\$3,750	\$142,500	\$150,000
2015	Taxiways:Install Taxiway Lighting (MITL) [Required By Part 139] - Safety/Security	Constr. Twy E MITL, parallel to Rwy 12/30, 4,400 lf; relocate the extg. vault including upgrading emergency generator.	\$48,125	\$48,125	\$1,828,750	\$1,925,000

Airport Projects - by Airport

Airport Name - County

FY	Project Component	Project Description	State Share	Local Share	Federal Share	Project Total
ERNEST A. LOVE FIELD - YAVAPAI						
2015	Other:<Light/Mark/Remove> Obstructions - Standards	Constr. mitigation of on-airport obstructions to the FAR Part 77 surfaces - entire airport.	\$7,500	\$7,500	\$285,000	\$300,000
2015	Ground Transportation:<Construct/Expand/Improve/Modify/Rehabilitate> Service Road - Other	Constr. Ph. 1 of airfield perimeter road to meet RSAT goals, from FBO area to Twy H, 4,000 ft.	\$37,500	\$37,500	\$1,425,000	\$1,500,000
2016	APMS - Runway Pavement Preservation	Crack Seal and Rubberized Asphalt Emulsion Seal Coat RW3L21RPR 10.	\$98,691	\$10,966	\$0	\$109,657
2016	APMS - Taxiway Pavement Preservation	Thin Asphalt Overlay/PFC TWDPR 10.	\$1,203,070	\$133,675	\$0	\$1,336,745
2016	APMS - Taxiway Pavement Preservation	Crack Seal and Rubberized Asphalt Emulsion Seal Coat TWKPR 10.	\$9,444	\$1,049	\$0	\$10,493
2016	APMS - Taxiway Pavement Preservation	Crack Seal and Rubberized Asphalt Emulsion Seal Coat TWAPR 10.	\$66,905	\$7,434	\$0	\$74,339
2016	Taxiways:Rehabilitate Taxiway - Reconstruct	Constr. thin mill and asphalt overlay/PFC taxilanes at Bottleneck hangar area (2010 pavement management report TH02PR), 5,300 ft x 75 ft.	\$25,000	\$25,000	\$950,000	\$1,000,000
2016	Runways:<Construct/Extend/Improve> Runway Safety Area [Non-Primary Airports] - Standards	Design Rwy 12/30 shift (approx. 150 ft ESE) for RSA requirements to include paving Rwy/Twy shoulders, realigning Twy F west of Twy C, Twy E lighting, drainage improvements between Twy F and Rwy 12/30 in the RSA.	\$16,250	\$16,250	\$617,500	\$650,000
2016	Equipment:Acquire Security Equipment/Install Fencing [Required By Part 107] - Safety/Security	Design security upgrades to include 29,000 lf of perimeter fencing, with cameras, and access control devices.	\$3,947	\$3,948	\$150,000	\$157,895
2016	Ground Transportation:<Construct/Expand/Improve/Modify/Rehabilitate> Service Road - Other	Constr. of airfield perimeter road around approach end of Rwy 12 from echo hangars to north ramp, then to Bottleneck hangars, 5,800 ft x 24 ft. Includes land acquisition and public road realignment, Ph. 2.	\$137,500	\$137,500	\$5,225,000	\$5,500,000
2017	Equipment:Acquire Security Equipment/Install Fencing [Required By Part 107] - Safety/Security	Constr. security upgrades to include 29,000 lf of perimeter fencing, with cameras and access control devices.	\$37,500	\$37,500	\$1,425,000	\$1,500,000
2017	APMS - Runway Pavement Preservation	Mill and replace PFC RW3R21LPR 10.	\$2,516,812	\$279,646	\$0	\$2,796,458
2017	APMS - Apron Pavement Preservation	Thin Asphalt Overlay/PFC Thin Overlay/PFC.	\$615,547	\$68,394	\$0	\$683,941
2017	Runways:<Construct/Extend/Improve> Runway Safety Area [Non-Primary Airports] - Standards	Constr. Rwy 12/30 shift (relocation - approx. 7,500 sy) for RSA requirements, paving all Rwy and Twy shoulders (100,000 lf), and realignment of Twy F (9,700 sy), Ph. 1.	\$81,250	\$81,250	\$3,087,500	\$3,250,000
2018	Runways:<Construct/Extend/Improve> Runway Safety Area [Non-Primary Airports] - Standards	Constr. Rwy 12/30 shift (relocation - approx. 7,500 sy) for RSA requirements, paving all Rwy and Twy shoulders (100,000 lf), and realignment of Twy F (9,700 sy), Ph. 2.	\$81,250	\$81,250	\$3,087,500	\$3,250,000
Airport Total:			\$5,966,271	\$1,114,318	\$19,297,250	\$26,377,839

Airport Projects - by Airport

Airport Name - County

FY	Project Component	Project Description	State Share	Local Share	Federal Share	Project Total
FALCON FLD - MARICOPA						
2014	APMS - Taxiway Pavement Preservation	Crack Seal and Rubberized Asphalt Emulsion Seal Coat TWEMF 10.	\$92,952	\$10,328	\$0	\$103,280
2014	APMS - Taxiway Pavement Preservation	Crack Seal and Rubberized Asphalt Emulsion Seal Coat TWDMF 10.	\$140,554	\$15,617	\$0	\$156,171
2014	APMS - Runway Pavement Preservation	Crack Seal and Rubberized Asphalt Emulsion Seal Coat RW4L22RMF 10.	\$105,099	\$11,678	\$0	\$116,777
2014	Taxiways:Construct Taxiway [Includes Relocation]	Design recon. Twys A and C. Each Twy is approx. 1,200 ft x 50 ft (120,000 sf total).	\$13,684	\$13,683	\$278,753	\$306,120
2014	Taxiways:Construct Taxiway [Includes Relocation]	Update and modify design of east Twy and adjacent apron approx. 900 ft x 150 ft (135,000 sf).	\$17,104	\$17,105	\$348,441	\$382,650
2015	Taxiways:Construct Taxiway [Includes Relocation]	Reconf. Twy A (Ph. 1), approx. 1,200 ft x 50 ft (60,000 sf).	\$67,050	\$67,050	\$1,365,900	\$1,500,000
2016	Apron Lighting, Install (New)	Design apron lighting for AC aprons southeast of Twy D; Reconf. Higley ramp layout.	\$90,000	\$10,000	\$0	\$100,000
2016	Taxiways:Construct Taxiway [Includes Relocation]	Recon. Twy C (Ph. 2) approx. 1,200 ft x 50 ft (60,000 sf).	\$67,050	\$67,050	\$1,365,900	\$1,500,000
2016	Taxiways:Construct Taxiway [Includes Relocation]	Constr. east Twy and adjacent apron approx. 900 ft x 150 feet (135,000 sf).	\$118,734	\$118,735	\$2,418,781	\$2,656,250
2017	Other:Install <Guidance/Other> Signs [Not Part 139] - Standards	Design rehab. airfield lighting & signage system Rwys 4L/22R & 4R/22L and Twys A, B, C, D & E.	\$6,705	\$6,705	\$136,590	\$150,000
2017	Apron Lighting, Install (New)	Constr. apron lighting for aprons southeast of Twy D; Reconf. Higley ramp layout.	\$488,655	\$54,295	\$0	\$542,950
2018	Master Plans	Update the airport master plan.	\$225,000	\$25,000	\$0	\$250,000
2018	Other:Install <Guidance/Other> Signs [Not Part 139] - Standards	Constr. rehab. airfield lighting & signage system (Ph. 1: Rwy 4R/22L and Twy D).	\$67,050	\$67,050	\$1,365,900	\$1,500,000
Airport Total:			\$1,499,637	\$484,296	\$7,280,265	\$9,264,198
FLAGSTAFF PULLIAM - COCONINO						
2014	Equipment:Acquire Aircraft Rescue & Fire Fighting Vehicle [Required By Part 139 Only] - Safety/Security	Replace outdated equipment - 1,500 gallon Stryker type apparatus and 300 gallon rapid intervention vehicle.	\$60,345	\$60,345	\$1,229,310	\$1,350,000
2014	Apron, Rehabilitate	Joint repairs between AC parking ramp concrete slabs. Project would include replacing backer rod spacers and permanently sealing joints. South apron is 30,508 sy.	\$216,000	\$24,000	\$0	\$240,000
2015	Runways:Rehabilitate Runway - Reconstruct	Mill and overlay Rwy 3/21 (150 ft x 8,800 ft) including remarking.	\$145,700	\$145,701	\$2,968,113	\$3,259,514
2015	Runway, Rehabilitate	Design mill and overlay Rwy 3/12 (150 ft x 8,800 ft)including remarking.	\$90,000	\$10,000	\$0	\$100,000
2016	Planning:<Conduct/Update> <Airport Master Plan Study {ALP, EA, etc.}>	Master plan update.	\$15,645	\$15,645	\$318,710	\$350,000

Airport Projects - by Airport

Airport Name - County

FY	Project Component	Project Description	State Share	Local Share	Federal Share	Project Total
FLAGSTAFF PULLIAM - COCONINO						
2016	Heliport, Construct	Design, pave, & constr. approx. 141,000 sf concrete heliport including utility relocation and storm water tie ins.	\$1,575,335	\$175,037	\$0	\$1,750,372
2016	APMS - Runway Pavement Preservation	Crack Seal and Rubberized Asphalt Emulsion Seal Coat RW321FG 10.	\$356,419	\$39,602	\$0	\$396,021
2017	Other:<Construct/Rehabilitate> Parking Lot [Non Revenue Producing-Non Hub/MAP] - Other	Ph. 1 constr. multi-level parking structure to increase passenger parking capacity at the airport terminal (approx. 350 spaces).	\$178,800	\$178,800	\$3,642,400	\$4,000,000
2018	Obstructions, Light/Mark/Remove (Safety Areas)	Repaint & restripe Rwy, Twy, & connectors to meet A/C standards.	\$382,500	\$42,500	\$0	\$425,000
2018	Other:<Construct/Rehabilitate> Parking Lot [Non Revenue Producing-Non Hub/MAP] - Other	Ph. 2 constr. multi-level parking structure to increase passenger parking capacity at the airport terminal (approx. 350 spaces).	\$178,800	\$178,800	\$3,642,400	\$4,000,000
Airport Total:			\$3,199,544	\$870,430	\$11,800,933	\$15,870,907
GANADO - APACHE						
2015	Planning:Conduct <Environmental Assessment/Environmental Impact Statement/Feasibility> <Study/Update>	Conduct EA for Rwy, apron and bypass Twys constr. at the current airport site.	\$0	\$21,456	\$218,544	\$240,000
2016	Taxiways:Construct Taxiway - Capacity	Constr. bypass Twys at each end of the new Rwy (approx. 750 ft x 60 ft) - Ph. 1 grading and drainage.	\$0	\$42,465	\$432,535	\$475,000
2016	Runways:Construct Runway - Capacity	Constr. Rwy (5,000 ft x 60 ft) at currently unimproved site, Ph. 1: grading and drainage.	\$0	\$111,750	\$1,138,250	\$1,250,000
2016	Apron:Construct Apron - Standards	Constr. apron (400 ft x 200 ft) on northeast side of Rwy - Ph. 1: grading and drainage.	\$0	\$42,465	\$432,535	\$475,000
2016	Runways:Construct Runway - Capacity	Constr. Rwy (5,000 ft x 60 ft) at currently unimproved site (design only).	\$0	\$17,880	\$182,120	\$200,000
2017	Apron:Construct Apron - Standards	Constr. apron (400 ft x 200 ft) on northeast side of Rwy - Ph. 2 paving.	\$0	\$26,820	\$273,180	\$300,000
2017	Taxiways:Construct Taxiway - Capacity	Constr. bypass Twys at each end of the new Rwy (approx. 750 ft x 60 ft) - Ph. 2 paving.	\$0	\$31,290	\$318,710	\$350,000
2017	Runways:Install Runway Lighting (HIRL, MIRL, TDZ, LAHSO Or CL) - Standards	Constr. Rwy (5,000 ft x 60 ft) - Ph. 3 edge lighting.	\$0	\$31,290	\$318,710	\$350,000
2017	Runways:Construct Runway - Capacity	Constr. Rwy (5,000 ft x 60 ft) at currently unimproved site - Ph. 2 paving.	\$0	\$107,280	\$1,092,720	\$1,200,000
2017	Apron:Install Apron Lighting - Standards	Constr. apron (400 ft x 200 ft) on northeast side of Rwy - Ph. 3 edge lighting.	\$0	\$10,728	\$109,272	\$120,000
2018	Equipment:Acquire Security Equipment/Install Perimeter Fencing [Not Part 107] - Standards	Install perimeter fencing (approx. 18,000 lf).	\$0	\$35,760	\$364,240	\$400,000
Airport Total:			\$0	\$479,184	\$4,880,816	\$5,360,000

Airport Projects - by Airport

Airport Name - County

FY	Project Component	Project Description	State Share	Local Share	Federal Share	Project Total
GILA BEND MUNI - MARICOPA						
2014	APMS - Taxiway Pavement Preservation	Thin Asphalt Overlay/PFC TWAGB 10.	\$343,873	\$38,208	\$0	\$382,081
2014	APMS - Apron Pavement Preservation	Thin Asphalt Overlay/PFC A01GB 10.	\$145,993	\$16,221	\$0	\$162,214
2014	Other:<Construct/Improve/Repair> <Fuel Farm/Utilities> [MAP] - Other	Design 7,100 ft of 12 in transmission waterline for fire protection for the 4 hangars, 2 shades, 10 AC and terminal. Starts at the closest water line and follows the new AZ 85 to the airport then into the airport along the new parking lot.	\$2,012	\$2,011	\$40,977	\$45,000
2015	Other:<Construct/Improve/Repair> <Fuel Farm/Utilities> [MAP] - Other	Construct 7,100 ft of 12 in transmission waterline from the closest waterline to the airport along new AZ 85 then into the airport along the new FHWA park and ride parking lot including inspection, staking, and project administration.	\$17,656	\$17,657	\$359,687	\$395,000
2016	Other:<Install/Rehabilitate> Airport Beacons [Required By Part 139] - Safety/Security	Purchase and install a new rotating beacon on extg. tower.	\$7,599	\$7,599	\$154,802	\$170,000
2016	Equipment:Install Weather Reporting Equipment {Describe, e.g., AWOS } - Standards	Install new AWOS.	\$8,940	\$8,940	\$182,120	\$200,000
2017	Runways:Install Runway <Vertical/Visual> Guidance System [PAPI/VASI/REIL/ALS/etc.] - Standards	Design and install REILs on both ends of Rwy 04/22.	\$4,470	\$4,470	\$91,060	\$100,000
Airport Total:			\$530,543	\$95,106	\$828,646	\$1,454,295
GLENDALE MUNI - MARICOPA						
2014	Planning:Conduct <Environmental Assessment/Environmental Impact Statement/Feasibility> <Study/Update>	Conduct an EA for the EMAS on Rwy 1/19, Twy A reconfiguration, and east Twy.	\$20,115	\$20,115	\$409,770	\$450,000
2014	Land:Acquire Land/Easement For Approaches	Land purchase: Conair (approx. 40 acres).	\$491,700	\$491,700	\$10,016,600	\$11,000,000
2015	Security Fencing - Chain Link, Install (New)	Design & constr. perimeter fencing of RPZ property (approx. 5,500 lf) and design & Constr. electrical service to extg. security cameras.	\$225,000	\$25,000	\$0	\$250,000
2016	APMS - Taxiway Pavement Preservation	Crack Seal and Rubberized Asphalt Emulsion Seal Coat TWAGL 10.	\$142,384	\$15,820	\$0	\$158,204
2016	Taxiways:Construct Taxiway - Capacity	Constr. east Twy, Ph. 1 (35 ft x 5,800 ft).	\$201,150	\$201,150	\$4,097,700	\$4,500,000
2016	APMS - Apron Pavement Preservation	Thin Asphalt Overlay/PFC A01GL 10.	\$192,900	\$21,433	\$0	\$214,333
2016	Runways:<Construct/Extend/Improve> Runway Safety Area [Primary Airports] - Safety/Security	Design EMAS for Rwy 1/19 and design Twy A reconfiguration for EMAS.	\$7,822	\$7,823	\$159,355	\$175,000
2017	Planning:<Conduct/Update> <Airport Master Plan Study {ALP, EA, etc.}>	Master plan update.	\$13,410	\$13,410	\$273,180	\$300,000
2017	Planning:Conduct <Environmental Assessment/Environmental Impact Statement/Feasibility> <Study/Update>	Conduct an EA for channelization of New River, Ph. 1.	\$8,940	\$8,940	\$182,120	\$200,000
2017	Runways:<Construct/Extend/Improve> Runway Safety Area [Primary Airports] - Safety/Security	Constr. EMAS for Rwy 1/19 and constr. Twy A reconfiguration.	\$134,100	\$134,100	\$2,731,800	\$3,000,000

Airport Projects - by Airport

Airport Name - County

FY	Project Component	Project Description	State Share	Local Share	Federal Share	Project Total
GLENDALÉ MUNI - MARICOPA						
2018	Apron:Construct Apron - Capacity	Design & constr. east side AC parking apron (52,000 sy).	\$102,810	\$102,810	\$2,094,380	\$2,300,000
Airport Total:			\$1,540,331	\$1,042,301	\$19,964,905	\$22,547,537
GRAND CANYON NATIONAL PARK - COCONINO						
2014	Apron:Construct Apron - Standards	Design and constr. apron extension from south apron to ARFF, 250 ft x 1,100 ft (275,000 sf) and install guidance signs to meet Part 139 standards.	\$156,450	\$156,450	\$3,187,100	\$3,500,000
2014	Terminal Development:<Improve/Modify/Rehabilitate> Terminal Building - Standards	Rehab. extg. terminal to meet standards for security screening, secured lounge, and baggage handling. Includes moving air tours that do not require security into new permanent modular building.	\$31,290	\$31,290	\$637,420	\$700,000
2015	Runways:<Construct/Extend/Improve> Runway Safety Area [Non-Primary Airports] - Standards	Provide 10 ft asphalt shoulders along both sides of Rwy 3/21, 8,999 ft.	\$24,585	\$24,585	\$500,830	\$550,000
2016	Terminal Development:Construct Terminal Building - Capacity	Design of new terminal building.	\$6,705	\$6,705	\$136,590	\$150,000
2016	APMS - Taxiway Pavement Preservation	Crack Seal and Rubberized Asphalt Emulsion Seal Coat TWPGC 10.	\$328,512	\$36,501	\$0	\$365,013
2016	APMS - Runway Pavement Preservation	Thin Asphalt Overlay/PFC RW321GC 10.	\$1,609,137	\$178,793	\$0	\$1,787,930
2016	APMS - Apron Pavement Preservation	Crack Seal and Rubberized Asphalt Emulsion Seal Coat A01GC 10, 20.	\$351,321	\$39,036	\$0	\$390,357
2016	Other:<Construct/Improve/Repair> <Fuel Farm/Utilities> [MAP] - Other	Constr. water well on site to be determined by survey.	\$67,050	\$67,050	\$1,365,900	\$1,500,000
2017	Terminal Development:Construct Terminal Building - Capacity	Ph.1 of terminal constr.	\$223,500	\$223,500	\$4,553,000	\$5,000,000
2018	Terminal Development:Construct Terminal Building - Capacity	Ph. 2 constr. of new terminal building.	\$223,500	\$223,500	\$4,553,000	\$5,000,000
Airport Total:			\$3,022,050	\$987,410	\$14,933,840	\$18,943,300
GRAND CANYON WEST - MOHAVE						
2014	Terminal Development:Construct Terminal Building - Capacity	Terminal building (+/- 55,000 sf) on west side of Rwy (design only).	\$0	\$134,100	\$1,365,900	\$1,500,000
2014	Runways:Rehabilitate Runway - Reconstruct	Fog seal, crack seal, and remark Rwy 17/35 (5,000 ft x 75 ft), Twy A (5,000 ft x 55 ft), Twys A1, A2, A3 and A4 (4,400 ft x 35 ft) and apron (61,405 sy)(design & constr.).	\$0	\$32,184	\$327,816	\$360,000
2015	Terminal Development:Construct Terminal Building - Capacity	Constr. terminal building (+/- 55,000 sf) on west side of Rwy 17/35 (constr. only).	\$0	\$2,950,200	\$30,049,800	\$33,000,000
2016	Buildings:<Construct/Expand/Improve/Modify/Rehabilitate> Aircraft Rescue & Fire Fighting Building [Pt. 139 Only] - Safety/Security	Constr. ARFF facility (design only).	\$0	\$35,760	\$364,240	\$400,000

Airport Projects - by Airport

Airport Name - County

FY	Project Component	Project Description	State Share	Local Share	Federal Share	Project Total
GRAND CANYON WEST - MOHAVE						
2017	Buildings:<Construct/Expand/Improve/Modify/Rehabilitate> Aircraft Rescue & Fire Fighting Building [Pt. 139 Only] - Safety/Security	Constr. ARFF facility (constr. only).	\$0	\$536,400	\$5,463,600	\$6,000,000
2018	Planning:Conduct <Environmental Assessment/Environmental Impact Statement/Feasibility> <Study/Update>	EA for widening, strengthening, and extending Rwy 17/35 (1,500 ft x 100 ft).	\$0	\$40,230	\$409,770	\$450,000
Airport Total:			\$0	\$3,728,874	\$37,981,126	\$41,710,000

GREENLEE COUNTY - GREENLEE

2014	Land:Acquire Land/Easement For Approaches	Acquire 3.27 acres for Rwy 25 RPZ (State Land, Seq. #1990-00718).	\$6,034	\$6,035	\$122,931	\$135,000
2014	Land:Acquire <Land/Easement> For Development/Relocation	Acquire 24.39 acres for airport development (State land, Parcel ID #300-16-004 & 005).	\$5,588	\$5,587	\$113,825	\$125,000
2014	Other:Improve Airport <Drainage/Erosion Control/Miscellaneous Improvements> - Standards	Constr. drainage improvements.	\$42,465	\$42,465	\$865,070	\$950,000
2014	Land:Acquire Land/Easement For Approaches	Acquire 12.10 acres for Rwy 7 RPZ (State land, no parcel ID available).	\$5,588	\$5,587	\$113,825	\$125,000
2016	APMS - Taxiway Pavement Preservation	Thin Asphalt Overlay/PFC TWAGR 10.	\$132,813	\$14,757	\$0	\$147,570
2016	Runway, Extend	Design Rwy 25 extension (300 ft x 75 ft) and Twy A extension (300 ft x 40 ft).	\$112,500	\$12,500	\$0	\$125,000
2017	Other:Install <Guidance/Other> Signs [Not Part 139] - Standards	Constr. guidance sign Installation (entire airport).	\$6,705	\$6,705	\$136,590	\$150,000
2017	Runways:Extend Runway- Capacity	Const. Rwy 25 extension (300 ft x 75 ft) and Twy A extension (300 ft x 40 ft).	\$26,820	\$26,820	\$546,360	\$600,000
2017	Taxiways:Install Taxiway Lighting (MITL) [Non Part 139 CS] - Statutory Emphasis Programs	(Constr.) install airfield MITL (5,100 ft x 40 ft).	\$21,232	\$21,233	\$432,535	\$475,000
2018	Planning:<Conduct/Update> <Airport Master Plan Study {ALP, EA, etc.}>	Update airport master plan.	\$5,588	\$5,587	\$113,825	\$125,000
Airport Total:			\$365,333	\$147,276	\$2,444,961	\$2,957,570

H.A. CLARK MEMORIAL FIELD - COCONINO

2014	Apron:Rehabilitate Apron - Reconstruction	Recon. original apron (approx. 4,500 sy) Ph. 2.	\$55,875	\$55,875	\$1,138,250	\$1,250,000
2014	Weather Reporting Equipment, Install (New)	Replace outdated AWOS.	\$90,000	\$10,000	\$0	\$100,000
2016	Land:Acquire Land/Easement For Approaches	Acquire approx. 254 acres of land for Rwy RPZ protection and future development.	\$55,875	\$55,875	\$1,138,250	\$1,250,000
2016	Apron, Construct (New)	Design GA apron phased expansion - north (approx. 4,000 sy, including relocated helipad(s).	\$112,500	\$12,500	\$0	\$125,000
2016	APMS - Taxiway Pavement Preservation	Mill and Replace PFC TWAPY 10.	\$571,152	\$63,461	\$0	\$634,613
2016	Ground Transportation:<Construct/Expand/Improve/Modify/Rehabilitate> Access Road - Other	Rehab. airport access road (approx. 1,000 lf).	\$15,645	\$15,645	\$318,710	\$350,000

Airport Projects - by Airport

Airport Name - County

FY	Project Component	Project Description	State Share	Local Share	Federal Share	Project Total
H.A. CLARK MEMORIAL FIELD - COCONINO						
2017	Auto Parking, Construct	Design expanded auto parking (phased) - non revenue (approx. 1,200 sy).	\$67,500	\$7,500	\$0	\$75,000
2017	Apron:Construct Apron - Capacity	Constr. north GA apron Ph. 1 (approx. 4,000 sy).	\$33,525	\$33,525	\$682,950	\$750,000
2018	Planning:<Conduct/Update> <Airport Master Plan Study {ALP, EA, etc.}>	Update airport master plan.	\$6,705	\$6,705	\$136,590	\$150,000
2018	Other:<Construct/Rehabilitate> Parking Lot [Non Revenue Producing-Non Hub/MAP] - Other	Constr. expanded non revenue auto parking (approx. 1,200 sy) Ph. 1.	\$11,175	\$11,175	\$227,650	\$250,000
2018	Apron, Construct (New)	Design phased terminal apron expansion south of extg. apron (approx. 10,000 sy).	\$135,000	\$15,000	\$0	\$150,000
Airport Total:			\$1,154,952	\$287,261	\$3,642,400	\$5,084,613
HOLBROOK MUNI - NAVAJO						
2014	Other:<Light/Mark/Remove> Obstructions - Standards	Relocate fuel farm adjacent to access road.	\$16,986	\$16,986	\$346,028	\$380,000
2014	Runways:Rehabilitate Runway <Lighting/Electrical Vault>	Conduct airfield electrical investigation and upgrade electrical service.	\$6,705	\$6,705	\$136,590	\$150,000
2014	APMS - Taxiway Pavement Preservation	Thin Asphalt Overlay/PFC TWBHL 10.	\$48,190	\$5,355	\$0	\$53,545
2014	APMS - Taxiway Pavement Preservation	Thin Asphalt Overlay/PFC TWAHL 10.	\$298,825	\$33,203	\$0	\$332,028
2014	APMS - Apron Pavement Preservation	Thin Asphalt Overlay/PFC A02HL 10.	\$33,092	\$3,677	\$0	\$36,769
2015	Runways:Rehabilitate Runway - Reconstruct	Crack seal, fog seal, remark Rwy 3/21 (6,698 ft x 75 ft).	\$6,705	\$6,705	\$136,590	\$150,000
2015	Apron:Rehabilitate Apron - Reconstruction	Crack seal, fog seal, remark apron pavement (33,600 sy).	\$6,705	\$6,705	\$136,590	\$150,000
2016	Runways:<Construct/Extend/Improve> Runway Safety Area [Non-Primary Airports] - Standards	RSA 3/21 grading (7,178 ft x 120 ft).	\$8,046	\$8,046	\$163,908	\$180,000
2017	Planning:Conduct <Environmental Assessment/Environmental Impact Statement/Feasibility> <Study/Update>	EA for Rwy 3/21 shift (1,302 ft x 75 ft).	\$10,728	\$10,728	\$218,544	\$240,000
Airport Total:			\$435,982	\$98,110	\$1,138,250	\$1,672,342
KAYENTA - NAVAJO						
2014	Equipment:Acquire Security Equipment/Install Perimeter Fencing [Not Part 107] - Standards	Install perimeter fence (approx. 16,000 lf) (design & constr.).	\$0	\$44,700	\$455,300	\$500,000
2015	Buildings:<Construct/Expand/Imp/Modify/Rehabilitate> <Snow Removal Equipment/Chemical Storage Building/etc.> - Standards	Constr. SRE Building (60 ft x 40 ft) (design only).	\$0	\$4,470	\$45,530	\$50,000
2015	Apron:Construct Apron - Capacity	Constr. apron north east of midfield apron (17,900 sy) (design only).	\$0	\$4,470	\$45,530	\$50,000
2016	Buildings:<Construct/Expand/Imp/Modify/Rehabilitate> <Snow Removal Equipment/Chemical Storage Building/etc.> - Standards	Constr. SRE Building (60 ft x 40 ft) (constr. only).	\$0	\$35,760	\$364,240	\$400,000

Airport Projects - by Airport

Airport Name - County

FY	Project Component	Project Description	State Share	Local Share	Federal Share	Project Total
KAYENTA - NAVAJO						
2016	Apron:Construct Apron - Capacity	Constr. apron north east of midfield apron (17,900 sy) (constr. only).	\$0	\$44,700	\$455,300	\$500,000
2017	Taxiways:Construct Taxiway - Capacity	Constr. Twy A and connectors (7,100 ft x 35 ft) - (design only).	\$0	\$10,728	\$109,272	\$120,000
2017	Runways:Rehabilitate Runway - Reconstruct	Fog seal, crack seal, remark apron (8,000 sy) and Rwy (7,100 ft x 75 ft).	\$0	\$31,290	\$318,710	\$350,000
2018	Taxiways:Construct Taxiway - Capacity	Constr. Twy A and connectors (7,100 ft x 35 ft) - Ph. 1: grading and drainage (constr. only).	\$0	\$107,280	\$1,092,720	\$1,200,000
Airport Total:			\$0	\$283,398	\$2,886,602	\$3,170,000

KEARNY - PINAL

2016	APMS - Apron Pavement Preservation	Thin Overlay/PFC A01KE 10.	\$60,482	\$6,720	\$0	\$67,202
Airport Total:			\$60,482	\$6,720	\$0	\$67,202

KINGMAN - MOHAVE

2014	Taxiway, Rehabilitate	Design & constr. Twy D pavement rehab. (9,900 ft x 75 ft).	\$900,000	\$100,000	\$0	\$1,000,000
2014	Land:Acquire Land/Easement For Approaches	Land acquisition for Rwy 21 RPZ (approx. 28 acres, Parcel ID #310-01-073).	\$50,000	\$50,000	\$1,900,000	\$2,000,000
2014	Taxiway, Rehabilitate	Design Twy B recon. (2,200 ft x 75 ft).	\$72,000	\$8,000	\$0	\$80,000
2015	APMS - Runway Pavement Preservation	Thin Asphalt Overlay/PFC RW1735KG 10.	\$655,142	\$72,793	\$0	\$727,935
2015	Taxiways:Rehabilitate Taxiway - Reconstruct	Constr. Twy B recon. (2,200 ft x 75 ft).	\$20,000	\$20,000	\$760,000	\$800,000
2015	Land For Protection (Safety Areas), Acquire	Land acquisition for Rwy 21 RPZ (approx. 28 acres, Parcel ID #310-01-073).	\$1,800,000	\$200,000	\$0	\$2,000,000
2016	Planning:Conduct <Environmental Assessment/Environmental Impact Statement/Feasibility> <Study/Update>	EA for Twy C recon. project (3,000 ft x 75 ft).	\$5,000	\$5,000	\$190,000	\$200,000
2017	Taxiway, Strengthen	Design Twy C recon. (3,000 ft x 75 ft).	\$90,000	\$10,000	\$0	\$100,000
2017	Ground Transportation:<Construct/Expand/Improve/Modify/Rehabilitate> Service Road - Other	Constr. airfield perimeter road (26,400 ft x 15 ft).	\$37,500	\$37,500	\$1,425,000	\$1,500,000
2018	APMS - Taxiway Pavement Preservation	PCC Joint Resealing and Spall Repair TWCKG 5.	\$11,781	\$1,309	\$0	\$13,090
2018	APMS - Apron Pavement Preservation	Thin Asphalt Overlay/PFC A01KG 15, 45.	\$243,130	\$27,014	\$0	\$270,144
2018	APMS - Apron Pavement Preservation	PCC Joint Resealing and Spall Repair A02KG 10.	\$98,324	\$10,925	\$0	\$109,249
2018	Terminal, Construct/Expand	Design terminal building (13,010 sf), adjacent to ARFF/Administration building.	\$270,000	\$30,000	\$0	\$300,000
2018	Taxiways:<Extend/Widen/Strengthen> Taxiway - Standards	Constr. Twy C Recon. (3,000 ft x 75 ft).	\$25,000	\$25,000	\$950,000	\$1,000,000
2018	APMS - Taxiway Pavement Preservation	Crack Seal and Rubberized Asphalt Emulsion Seal Coat TWAKG 10.	\$57,164	\$6,352	\$0	\$63,516

Airport Projects - by Airport

Airport Name - County
FY Project Component

Project Description

State Share

Local Share

Federal Share

Project Total

KINGMAN - MOHAVE

Airport Total: \$4,335,041 \$603,893 \$5,225,000 \$10,163,934

LAKE HAVASU CITY - MOHAVE

2014	Other:<Light/Mark/Remove> Obstructions [Hazard Only e.g., Approaches] - Safety/Security	Design & constr. the replacement of extg. WPPA mountain & transmission line obstruction lights.	\$6,705	\$6,705	\$136,590	\$150,000
2014	Airport Drainage, Improve	Design FOD erosion control improvements near Rwy 14 and Twy A to reduce FOD issues.	\$27,000	\$3,000	\$0	\$30,000
2015	Obstructions, Light/Mark/Remove (Safety Areas)	Relocate extg. fire hydrant - Ph. 2 (adjacent to large shade port). Design (Ph. 1) completed in 2010.	\$36,000	\$4,000	\$0	\$40,000
2015	Buildings:<Construct/Expand/Improve/Modify/Rehabilitate> Building - Standards	Constr. new airfield electrical vault - replace extg. metal airfield electrical vault with a 12 ft x 16 ft pre-engineered building that complies with current electrical codes (adjacent to extg. fire station). Design (Ph. 1) underway 2011/12.	\$13,410	\$13,410	\$273,180	\$300,000
2016	Taxiway, Construct (New)	Design north ramp Twy connectors.	\$22,500	\$2,500	\$0	\$25,000
2016	Other:Improve Airport <Drainage/Erosion Control/Miscellaneous Improvements> - Standards	Constr. FOD erosion control improvements near Rwy 14 and Twy A to reduce FOD issues.	\$13,410	\$13,410	\$273,180	\$300,000
2017	Taxiways:Construct Taxiway - Capacity	Constr. north ramp Twy connectors.	\$3,129	\$3,129	\$63,742	\$70,000
2017	Planning:<Conduct/Update> <Airport Master Plan Study {ALP, EA, etc.}>	ALP update: Helicopter and large AC parking study - Redesignate areas of the main apron to accommodate helicopters and large AC parking and evaluate extg. pavement strengths.	\$2,637	\$2,638	\$53,725	\$59,000
2017	APMS - Apron Pavement Preservation	Thin Asphalt Overlay/PFC A02LH 20.	\$66,240	\$7,360	\$0	\$73,600
2017	APMS - Apron Pavement Preservation	Thin Asphalt Overlay/PFC A01LH 20.	\$357,341	\$39,705	\$0	\$397,046
2017	APMS - Runway Pavement Preservation	Thin Asphalt Overlay/PFC RW1432LH 10.	\$1,035,930	\$115,103	\$0	\$1,151,033
2018	Apron, Construct (New)	Design helicopter and large AC parking areas.	\$22,500	\$2,500	\$0	\$25,000
2018	Other:Improve Airport <Drainage/Erosion Control/Miscellaneous Improvements> - Standards	Design & constr. green in-field pavement markings.	\$2,235	\$2,235	\$45,530	\$50,000

Airport Total: \$1,609,037 \$215,695 \$845,947 \$2,670,679

LAUGHLIN/BULLHEAD INTL - MOHAVE

2014	Taxiways:Rehabilitate Taxiway - Reconstruct	Rehab. Twy A including connector twys, shoulders, remarking, and MITL upgrade. Approx. 95,000 sy.	\$65,305	\$65,305	\$1,330,353	\$1,460,963
2014	Runways:Extend Runway- Capacity	Site preparation/earthwork for 1,000 ft south extension to Rwy 16/34 and Twy A - Ph. 1.	\$51,629	\$51,629	\$1,051,743	\$1,155,000
2014	Taxiway, Rehabilitate	Rehab. Twy A including connector twys, shoulders, remarking, and MITL upgrade. Approx. 95,000 sy.	\$2,103,000	\$233,667	\$0	\$2,336,667
2014	APMS - Runway Pavement Preservation	Crack Seal and Rubberized Asphalt Emulsion Seal Coat RW1634LB 10.	\$353,103	\$39,234	\$0	\$392,337

Airport Projects - by Airport

Airport Name - County

FY	Project Component	Project Description	State Share	Local Share	Federal Share	Project Total
LAUGHLIN/BULLHEAD INTL - MOHAVE						
2015	Runways:Extend Runway- Capacity	Constr. 1,000 ft extension (17,000 sy) to south end of Rwy 16/34 & includes extension of parallel Twy A (12,000 sy) & associated MIRL & MITL (Ph. 3).	\$281,610	\$281,610	\$5,736,780	\$6,300,000
2016	Apron, Rehabilitate	Rehab. approx. 6,000 sy of the cargo apron located south and west of the terminal building. Ph.2.	\$900,000	\$100,000	\$0	\$1,000,000
2016	Land:Acquire <Land/Easement> For Development/Relocation	Acquisition of 75 acres of ASLD property (Ph.1). The APN is 213-32-003.	\$167,625	\$167,625	\$3,414,750	\$3,750,000
2017	Land:Acquire <Land/Easement> For Development/Relocation	Acquisition of 75 acres of ASLD property (Ph. 2). The APN is 213-32-003.	\$167,625	\$167,625	\$3,414,750	\$3,750,000
2017	APMS - Taxiway Pavement Preservation	Thin Asphalt Overlay/PFC TWALB 10.	\$855,319	\$95,035	\$0	\$950,354
2018	Other:Improve Airport <Drainage/Erosion Control/Miscellaneous Improvements> - Standards	Misc. RSA erosion protection and drainage improvements along Rwy 16/34 (Ph. 1).	\$44,700	\$44,700	\$910,600	\$1,000,000
2018	Land:Acquire <Land/Easement> For Development/Relocation	Acquisition of 75 acres of ASLD property (Ph. 3). The APN is 213-32-003.	\$167,625	\$167,625	\$3,414,750	\$3,750,000
Airport Total:			\$5,157,541	\$1,414,054	\$19,273,726	\$25,845,321
MARANA RGNL - PIMA						
2014	Planning:<Conduct/Update> <Airport Master Plan Study {ALP, EA, etc.}>	Airport master plan update.	\$13,410	\$13,410	\$273,180	\$300,000
2014	Planning:Conduct <Environmental Assessment/Environmental Impact Statement/Feasibility> <Study/Update>	Environmental assessment - environmental survey and preparation of CatEx for apron rehab. (A,B,C,E).	\$6,705	\$6,705	\$136,590	\$150,000
2014	Runways:Rehabilitate Runway <Lighting/Electrical Vault>	Design and place 50 Rwy and Twy incandescent guidance replacement signs with LED signage and replace 25 in ground Twy edge lights to increase safety.	\$23,020	\$23,021	\$468,959	\$515,000
2014	Apron:Rehabilitate Apron - Reconstruction	Design rehab. transient, open tiedown, helicopter & term. aprons-constr. documents for rehab. of extg. aprons: transient adjacent to the FBO; open tiedown parallel to 3-21; helicopter adjacent-Twy A; and term-parallel Twy E.	\$9,834	\$9,834	\$200,332	\$220,000
2015	Apron:Construct Apron - Standards	Constr. rehab. open tiedown, helicopter and terminal aprons - (extg. aprons: transient 446,314 sf; open tiedown 166,579 sf; helicopter 267,600 sf adjacent Twy A and terminal aprons 777,000 sf).	\$116,220	\$116,220	\$2,367,560	\$2,600,000
2015	APMS - Runway Pavement Preservation	Thin Asphalt Overlay/PFC RW1230AV 10.	\$845,048	\$93,894	\$0	\$938,942
2015	Taxiways:Rehabilitate Taxiway - Reconstruct	Design rehab. of Twys: B-parallel to Rwy 3/21; and E parallel to Rwy 12/30 on NE side. Total of 948,850 ft sq. or approx. 21.8 acres.	\$3,800	\$3,799	\$77,401	\$85,000
2015	Land:Acquire Land/Easement For Approaches	Acquire land - 202 acres purchase approx. 155 acres of land located within RPZ of Rwy 12 & 30, approx. 46 acres are located within RPZ of Rwy 3 & 21. 21504001T; 21504001S; 215100520; 21510051R.	\$227,970	\$227,970	\$4,644,060	\$5,100,000

Airport Projects - by Airport

Airport Name - County

FY	Project Component	Project Description	State Share	Local Share	Federal Share	Project Total
MARANA RGNL - PIMA						
2015	APMS - Runway Pavement Preservation	Thin Asphalt Overlay/PFC RW321AV 10.	\$334,930	\$37,214	\$0	\$372,144
2015	APMS - Taxiway Pavement Preservation	Thin Asphalt Overlay/PFC TWBAV 10.	\$202,748	\$22,527	\$0	\$225,275
2015	Other:<Construct/Improve/Repair> <Fuel Farm/Utilities> [MAP] - Other	Constr. fire protection waterline from N portion of airport looping (6,000 ft of 12 inch waterline) SW around Rwy 12/30 & connecting to extg. Well.	\$67,050	\$67,050	\$1,365,900	\$1,500,000
2016	Terminal Development:Construct Terminal Building - Capacity	Constr. public use terminal (16,000 sf) on E side (includes space for an FBO, pilot facilities, public meeting rooms and airport administration offices).	\$312,900	\$312,900	\$6,374,200	\$7,000,000
2016	Taxiways:Rehabilitate Taxiway - Reconstruct	Design rehab. of Twys: B parallel to Rwy 3/21; and E parallel to Rwy 12/30 on NE side. Total of 948,850 ft sq. or approx. 21.8 acres.	\$73,755	\$73,755	\$1,502,490	\$1,650,000
2016	Taxiway, Rehabilitate	Design rehab. Twy C - produce constr. documents for the rehab. of Twy C (50 ft x 2,000 ft). Twy C is located SW of Rwy 12-30 and administrative offices.	\$45,000	\$5,000	\$0	\$50,000
2016	Planning:Conduct <Environmental Assessment/Environmental Impact Statement/Feasibility> <Study/Update>	EA Rwy 3-21 extension - produce constr. documents for the extension of Rwy 3-21. The extension will extend the approach end of Rwy 21 approx. 500 ft'. The Rwy width will stay the same at 75 ft'.	\$6,705	\$6,705	\$136,590	\$150,000
2017	Planning:Conduct Noise Compatibility Plan Study/Update	Update Part 150 noise study.	\$13,410	\$13,410	\$273,180	\$300,000
2017	Taxiway, Rehabilitate	Const. rehab. Twy C - complete rehab. constr. for Twy C (50 ftx 2,000 ft). Complete constr. Drawings will be produced during FY 2014 per ACIP.	\$765,000	\$85,000	\$0	\$850,000
2017	Taxiway, Construct (New)	Design Twy H - NW of Rwy 3/21 (50 ft x 4,400 ft) located parallel to Rwy 3/21.	\$360,000	\$40,000	\$0	\$400,000
2018	Apron:Expand Apron - Capacity	Constr. bypass apron - constr. a bypass apron (504 ft x 188 ft) on the infield adjacent to the extg. bypass apron. Ph. 2.	\$49,170	\$49,170	\$1,001,660	\$1,100,000
2018	Runways:Extend Runway- Capacity	Design Rwy 3-21 extension - Produce constr. documents for the extension of Rwy 3-21. The extension will extend the approach end of Rwy 21 approx. 500 ft. The Rwy width will stay the same at 75 ft.	\$8,046	\$8,046	\$163,908	\$180,000
2018	Taxiways:Construct Taxiway - Capacity	Const. section (50 ft x 1,300 ft) of Twy K on infield adjacent to existing bypass apron.	\$62,580	\$62,580	\$1,274,840	\$1,400,000
2018	APMS - Taxiway Pavement Preservation	Crack Seal and Rubberized Asphalt Emulsion Seal Coat TWCAV 10.	\$42,111	\$4,679	\$0	\$46,790
2018	Taxiways:Construct Taxiway - Capacity	Constr. Twy H - NW of Rwy 3-21 - Constr. a Twy H parallel to Rwy 3-21 approx. 50 ft x 4,400 ft.	\$143,040	\$143,040	\$2,913,920	\$3,200,000
2018	APMS - Taxiway Pavement Preservation	Crack Seal and Rubberized Asphalt Emulsion Seal Coat TWEAV 10.	\$62,393	\$6,933	\$0	\$69,326
Airport Total:			\$3,794,845	\$1,432,862	\$23,174,770	\$28,402,477

Airport Projects - by Airport

Airport Name - County

FY	Project Component	Project Description	State Share	Local Share	Federal Share	Project Total
NOGALES INTL - SANTA CRUZ						
2014	Other:Improve Airport <Drainage/Erosion Control/Miscellaneous Improvements> - Standards	Mass grade eroded embankment, install geogrid & supply/install area drains & pipes.	\$67,050	\$67,050	\$1,365,900	\$1,500,000
2014	Apron, Rehabilitate	Design recon. of approx. 20,000 sf of transient apron south of terminal.	\$135,000	\$15,000	\$0	\$150,000
2015	Apron:Rehabilitate Apron - Reconstruction	Recon. approx. 20,000 sf of transient apron - Ph. 1.	\$35,760	\$35,760	\$728,480	\$800,000
2016	APMS - Apron Pavement Preservation	Thin Asphalt Overlay/PFC A01NG10.	\$188,911	\$20,990	\$0	\$209,901
2016	Apron:Rehabilitate Apron - Reconstruction	Recon. approx. 20,000 sf of transient apron - Ph. 2.	\$35,760	\$35,760	\$728,480	\$800,000
2016	APMS - Runway Pavement Preservation	Crack Seal and Rubberized Asphalt Emulsion Seal Coat RW321NG 10.	\$254,573	\$28,286	\$0	\$282,859
2017	Other:<Construct/Improve/Repair> <Fuel Farm/Utilities> [MAP] - Other	Design/constr. new fuel farm.	\$8,940	\$8,940	\$182,120	\$200,000
Airport Total:			\$725,994	\$211,786	\$3,004,980	\$3,942,760
PAGE MUNI - COCONINO						
2014	Apron:Expand/Strengthen Apron - Standards	Constr. apron strengthening and apron expansion (GA apron, approx. 25,000 sy).	\$80,460	\$80,460	\$1,639,080	\$1,800,000
2015	Taxiways:Construct Taxiway - Capacity	Design Twy from north ramp to Rwy 7 end (585 ft x 35 ft).	\$3,576	\$3,576	\$72,848	\$80,000
2015	Runways:Install Runway Lighting (HIRL, MIRL, TDZ, LAHSO Or CL) - Standards	Design airfield electrical upgrade - replace all Rwy and Twy edge lights and guidance signs with LED fixtures.	\$4,470	\$4,470	\$91,060	\$100,000
2016	APMS - Runway Pavement Preservation	Thin Asphalt Overlay/PFC RW1533PM 10.	\$1,020,950	\$113,439	\$0	\$1,134,389
2016	Runways:<Extend/Widen/Strengthen> Runway [To Meet Standards] - Standards	Constr. Rwy 7/25 extension (approx. 600 ft x 75 ft).	\$80,460	\$80,460	\$1,639,080	\$1,800,000
2017	Runways:Install Runway Lighting (HIRL, MIRL, TDZ, LAHSO Or CL) - Standards	Constr. airfield electrical upgrades. Replace all Rwy and Twy edge lights and guidance signs with LED fixtures.	\$13,410	\$13,410	\$273,180	\$300,000
2017	Taxiways:Construct Taxiway - Capacity	Constr. Twy from north ramp to Rwy 7 end (585 ft x 35 ft).	\$35,760	\$35,760	\$728,480	\$800,000
2018	APMS - Taxiway Pavement Preservation	Crack Seal and Rubberized Asphalt Emulsion Seal Coat TWAPM 10, 20.	\$112,426	\$12,492	\$0	\$124,918
2018	APMS - Runway Pavement Preservation	Crack Seal and Rubberized Asphalt Emulsion Seal Coat RW725PM 10.	\$57,543	\$6,394	\$0	\$63,937
2018	Apron:Construct Apron - Capacity	Design northwest taxilane (1,350 ft x 35 ft).	\$4,470	\$4,470	\$91,060	\$100,000
Airport Total:			\$1,413,525	\$354,931	\$4,534,788	\$6,303,244

Airport Projects - by Airport

Airport Name - County

FY	Project Component	Project Description	State Share	Local Share	Federal Share	Project Total
PAYSON - GILA						
2014	APMS - Taxiway Pavement Preservation	Crack Seal and Rubberized Asphalt Emulsion Seal Coat TWAPY 10.	\$84,623	\$9,403	\$0	\$94,026
2014	Taxiways:Construct Taxiway [Includes Relocation]	Relocate Twy A (5,504 ft x 35 ft) for ARC B-II (design only).	\$9,834	\$9,834	\$200,332	\$220,000
2014	APMS - Runway Pavement Preservation	Mill and Replace PFC RW624PY 10.	\$792,119	\$88,013	\$0	\$880,132
2015	Apron:Construct Apron - Standards	Relocate/shift echo apron (840 ft x 150 ft) (constr. only).	\$49,170	\$49,170	\$1,001,660	\$1,100,000
2016	Apron:Construct Apron - Standards	Relocate alpha (13,400 sy) and bravo (15,500 sy) aprons (design only).	\$3,576	\$3,576	\$72,848	\$80,000
2016	APMS - Taxiway Pavement Preservation	Mill and Replace PFC TWAPY 10.	\$571,152	\$63,461	\$0	\$634,613
2017	Apron:Construct Apron - Standards	Relocate alpha (13,400 sy) and bravo (15,500 sy) aprons (constr. only).	\$75,990	\$75,990	\$1,548,020	\$1,700,000
2017	APMS - Apron Pavement Preservation	Crack Seal and Rubberized Asphalt Emulsion Seal Coat A01PY 10.	\$37,846	\$4,205	\$0	\$42,051
2018	Auto Parking, Construct	Relocate parking lot (design only) being displaced by new terminal building.	\$27,000	\$3,000	\$0	\$30,000
Airport Total:			\$1,651,310	\$306,652	\$2,822,860	\$4,780,822

PHOENIX DEER VALLEY - MARICOPA

2014	Planning:<Conduct/Update> <Airport Master Plan Study {ALP, EA, etc.}>	Conduct wildlife assessment and develop wildlife management plan.	\$4,470	\$4,470	\$91,060	\$100,000
2014	Apron:Expand Apron - Capacity	Constr. AC run-up area at the ends of Rwy 7R/25L. Each area is approx. 13,500 sy for a total of 27,000 sy.	\$112,197	\$112,197	\$2,285,606	\$2,510,000
2014	APMS - Taxiway Pavement Preservation	Thin Asphalt Overlay/PFC TC 1, 2, 3, 4.	\$378,141	\$42,016	\$0	\$420,157
2014	APMS - Taxiway Pavement Preservation	Thin Asphalt Overlay/PFC TC01, 02, 07-11 - 1.	\$109,316	\$12,146	\$0	\$121,462
2015	Apron:Rehabilitate Apron - Reconstruction	Recon. north ramp (approx. 133,100 sy) - Ph. 1.	\$215,901	\$215,901	\$4,398,198	\$4,830,000
2016	Apron:Rehabilitate Apron - Reconstruction	Recon. north ramp (approx. 108,200 sy) - Ph. 2.	\$175,671	\$175,671	\$3,578,658	\$3,930,000
2017	Taxiway, Rehabilitate	Rehab. Twy C (approx. 8,200 ft x 40 ft).	\$1,080,000	\$120,000	\$0	\$1,200,000
2017	Taxiways:Construct Taxiway - Capacity	Constr. acute angle Twy connectors A6, A7, B6, and B7.	\$76,884	\$76,884	\$1,566,232	\$1,720,000
2017	Taxiways:Rehabilitate Taxiway - Reconstruct	Recon. Twy B (approx. 5,300 ft x 40 ft).	\$191,316	\$191,316	\$3,897,368	\$4,280,000
2018	APMS - Runway Pavement Preservation	Crack Seal and Rubberized Asphalt Emulsion Seal Coat. R07R 1,2,4,5,6.	\$177,016	\$19,669	\$0	\$196,685
2018	Runways:Rehabilitate Runway - Reconstruct	Rehab. Rwy 7R/25L (approx. 8,200 ft x 100 ft).	\$178,800	\$178,800	\$3,642,400	\$4,000,000
Airport Total:			\$2,699,712	\$1,149,070	\$19,459,522	\$23,308,304

Airport Projects - by Airport

Airport Name - County

FY	Project Component	Project Description	State Share	Local Share	Federal Share	Project Total
PHOENIX GOODYEAR - MARICOPA						
2014	Obstructions, Light/Mark/Remove (Safety Areas)	Shift Rwy 3/21 300 ft to the southwest providing RSA standards on both ends.	\$2,130,000	\$1,439,000	\$0	\$3,569,000
2014	Apron:Rehabilitate Apron - Reconstruction	Rehab. north apron, north T-hangar apron, and south T-hangar apron (approx. 155,600 sy of asphalt pavement).	\$138,570	\$138,570	\$2,822,860	\$3,100,000
2014	Planning:<Conduct/Update> <Airport Master Plan Study {ALP, EA, etc.}>	Conduct wildlife assessment and develop wildlife management plan.	\$4,470	\$4,470	\$91,060	\$100,000
2015	Airport Drainage, Improve	Improve airfield drainage throughout the airport by designing and constr. the pipe system needed to put all irrigation channels underground.	\$1,350,000	\$150,000	\$0	\$1,500,000
2015	Taxiways:Construct Taxiway - Capacity	Design and constr. west parallel Twy B and exits (approx. 118,660 sy). Twy will be 8,500 ft x 75 ft. Ph. 1 (approx. 22,000 sy).	\$160,920	\$160,920	\$3,278,160	\$3,600,000
2015	Runways:Rehabilitate Runway - Reconstruct	Rehab. Rwy 3/21 in asphalt (8,500 ft x 150 ft).	\$220,729	\$220,728	\$4,496,543	\$4,938,000
2016	Land For Protection (Safety Areas), Acquire	Land acquisition in RPZs (approx. 63 acres).	\$1,800,000	\$200,000	\$0	\$2,000,000
2016	Apron:Rehabilitate Apron - Reconstruction	Rehab. apron pavement - Ph. 1. (approx. 60,000 sy of concrete pavement).	\$281,610	\$281,610	\$5,736,780	\$6,300,000
2016	Taxiways:Construct Taxiway - Capacity	Constr. west parallel Twy B and exits (approx. 118,660 sy). Twy will be 8,500 ft x 75 ft. Ph. 2 (approx. 52,000 sy).	\$312,900	\$312,900	\$6,374,200	\$7,000,000
2017	APMS - Apron Pavement Preservation	Crack Seal and Rubberized Asphalt Emulsion Seal Coat TA 3, 5, 02b, 02c, 04a, 04b, 04c, 06a, 06b,06c.	\$191,821	\$21,313	\$0	\$213,134
2017	Apron:Rehabilitate Apron - Reconstruction	Rehab. apron pavement - Ph. 2. (approx. 60,000 sy of concrete pavement).	\$281,610	\$281,610	\$5,736,780	\$6,300,000
2017	APMS - Apron Pavement Preservation	Crack Seal and Rubberized Asphalt Emulsion Seal Coat TA7 1, 2, 3.	\$4,031	\$448	\$0	\$4,479
2017	APMS - Apron Pavement Preservation	Crack Seal and Rubberized Asphalt Emulsion Seal Coat TA3 1, 2, 3, 4, 5, 6, 7.	\$12,521	\$1,391	\$0	\$13,912
2017	Taxiways:<Extend/Widen/Strengthen> Taxiway - Standards	Strengthen Twy A to be compliant with the airport reference code D-4 standards (approx. 6,000 ft x 75 ft).	\$133,876	\$133,877	\$2,727,247	\$2,995,000
2017	APMS - Apron Pavement Preservation	Crack Seal and Rubberized Asphalt Emulsion Seal Coat TA4 1, 2, 3.	\$3,524	\$391	\$0	\$3,915
2018	Other:Improve Airport <Drainage/Erosion Control/Miscellaneous Improvements> - Standards	Infield pavement in the vicinity of Twy connectors A2, A3, and A8.	\$31,692	\$31,693	\$645,615	\$709,000
2018	Ground Transportation:<Construct/Expand/Improve/Modify/Rehabilitate> Access Road - Capacity	Recon. public access road from Litchfield Road to the terminal building complex (approx. 2,700 ft x 24 ft).	\$50,600	\$50,601	\$1,030,799	\$1,132,000
2018	Perimeter/Service Road, Construct (New)	Constr. west side on-airport access road (approx. 860 ft x 16 ft) and utility extension.	\$495,900	\$55,100	\$0	\$551,000
2018	Perimeter/Service Road, Rehabilitate	Recon. airport perimeter road (approx. 24,800 ft x 23 ft). Ph. 2 (approx. 10,800 ft).	\$1,536,300	\$170,700	\$0	\$1,707,000

Airport Projects - by Airport

Airport Name - County

FY	Project Component	Project Description	State Share	Local Share	Federal Share	Project Total
PHOENIX GOODYEAR - MARICOPA						
2018	Taxiways:Construct Taxiway - Capacity	Constr. west parallel Twy B and exits (approx. 118,660 sy). Twy will be 8,500 ft x 75 ft. Ph. 3 (approx. 44,660 sy).	\$254,790	\$254,790	\$5,190,420	\$5,700,000
Airport Total:			\$9,395,864	\$3,910,112	\$38,130,464	\$51,436,440
PHOENIX SKY HARBOR INTL - MARICOPA						
2014	Apron:Rehabilitate Apron - Reconstruction	Recon. terminal 4 apron - Ph. 2 (approx. 48,000 sy).	\$1,909,500	\$1,909,500	\$11,457,000	\$15,276,000
2014	Land:Acquire <Land/Easement> For Noise Compatibility/Relocation Within 65 - 69 DNL	Acquire properties within the 65-75 DNL contour, as identified in the FAR Part 150.	\$712,500	\$712,500	\$4,275,000	\$5,700,000
2014	Other:Environmental Mitigation	Install solar panels on top of terminal 4 building.	\$986,250	\$986,250	\$5,917,500	\$7,890,000
2015	Apron:Rehabilitate Apron - Reconstruction	Recon. terminal 4 apron - Ph. 3 (approx. 48,000 sy).	\$1,909,500	\$1,909,500	\$11,457,000	\$15,276,000
2015	Land:Acquire <Land/Easement> For Noise Compatibility/Relocation Within 65 - 69 DNL	Acquire properties within the 65-75 DNL contour, as identified in the FAR Part 150.	\$512,500	\$512,500	\$3,075,000	\$4,100,000
2015	Other:Environmental Mitigation	Install solar panels on the airport property.	\$986,250	\$986,250	\$5,917,500	\$7,890,000
2015	Planning:<Conduct/Update> (e.g., Pavement Maintenance Plan, PCI, NPDES, etc.)	Inspect airfield pavement surfaces, provide report of current conditions, and provide pavement management program for the area inspected.	\$45,000	\$45,000	\$270,000	\$360,000
2015	Airport Drainage, Improve	Upgrade airfield utility access points and pave adjacent infields.	\$1,800,000	\$200,000	\$0	\$2,000,000
2015	Planning:<Conduct/Update> <Airport Master Plan Study {ALP, EA, etc.}>	Develop a new airport master plan.	\$734,375	\$734,375	\$4,406,250	\$5,875,000
2016	Apron:Rehabilitate Apron - Reconstruction	Rehab. west air cargo apron (approx. 67,830 sy).	\$644,250	\$644,250	\$3,865,500	\$5,154,000
2016	Apron, Rehabilitate	Recon. northwest hangar apron (23,880 sy).	\$1,749,600	\$194,400	\$0	\$1,944,000
2016	Taxiways:Rehabilitate Taxiway - Reconstruct	Recon. Twy connector F8 (approx. 2,000 sy).	\$215,250	\$215,250	\$1,291,500	\$1,722,000
2016	Other:Environmental Mitigation	Install solar panels on the airport property.	\$986,250	\$986,250	\$5,917,500	\$7,890,000
2016	Apron:Rehabilitate Apron - Reconstruction	Recon. terminal 4 apron - Ph. 4 (approx. 48,000 sy).	\$1,909,500	\$1,909,500	\$11,457,000	\$15,276,000
2017	Airport Drainage, Improve	Upgrade airfield utility access points and pave adjacent infields.	\$1,800,000	\$200,000	\$0	\$2,000,000
2017	Other:Environmental Mitigation	Install solar panels on the airport property.	\$986,250	\$986,250	\$5,917,500	\$7,890,000
2017	Apron:Rehabilitate Apron - Reconstruction	Recon. terminal 2 apron (extg. concourse building envelope is 9,250 sy).	\$265,875	\$265,875	\$1,595,250	\$2,127,000
2017	Apron:Rehabilitate Apron - Reconstruction	Recon. terminal 4 apron - Ph. 5 (approx. 48,000 sy).	\$1,909,500	\$1,909,500	\$11,457,000	\$15,276,000
2018	Taxiways:Construct Taxiway - Capacity	Constr. new crossfield Twy V - Ph. 1.	\$2,500,000	\$2,500,000	\$15,000,000	\$20,000,000
2018	Airport Drainage, Improve	Upgrade airfield utility access points and pave adjacent infields.	\$1,800,000	\$200,000	\$0	\$2,000,000
2018	Apron:Rehabilitate Apron - Reconstruction	Recon. terminal 4 apron - Ph. 6 (approx. 48,000 sy).	\$1,909,500	\$1,909,500	\$11,457,000	\$15,276,000
2018	Planning:Conduct Noise Compatibility Plan Study/Update	Conduct FAR Part 150 Update.	\$187,500	\$187,500	\$1,125,000	\$1,500,000
2018	Other:Environmental Mitigation	Install solar panels on the airport property.	\$986,250	\$986,250	\$5,917,500	\$7,890,000

Airport Projects - by Airport

Airport Name - County

FY	Project Component	Project Description	State Share	Local Share	Federal Share	Project Total
PHOENIX SKY HARBOR INTL - MARICOPA						
2018	Planning:<Conduct/Update> (e.g., Pavement Maintenance Plan, PCI, NPDES, etc.)	Inspect airfield pavement surfaces, provide report of current conditions, and provide pavement management program for the area inspected.	\$45,000	\$45,000	\$270,000	\$360,000
Airport Total:			\$27,490,600	\$21,135,400	\$122,046,000	\$170,672,000
PHOENIX-MESA GATEWAY - MARICOPA						
2014	Other:<Light/Mark/Remove> Obstructions [Hazard Only e.g., Approaches] - Safety/Security	Site study for ASR relocation. Preliminary to design/const. of relocation of ASR site. Existing site is in footprint of eastside terminal.	\$16,539	\$16,539	\$336,922	\$370,000
2014	Runways:Rehabilitate Runway - Reconstruct	Recon. 3,000 ft x 150 ft to approach end Rwy 30L with 35 ft Rwy shoulders, including lighting, drainage, signing & marking.	\$312,900	\$312,900	\$6,374,200	\$7,000,000
2014	Runways:Rehabilitate Runway - Reconstruct	Recon. 1,000 ft of Rwy 12R threshold. 1,000 ft x 150 ft to approach end of Rwy 12R, with 35 ft Rwy shoulders, including lighting, drainage, marking & signage.	\$122,567	\$122,568	\$2,496,865	\$2,742,000
2014	Planning:Conduct <Environmental Assessment/Environmental Impact Statement/Feasibility> <Study/Update>	EA/EIS required for new eastside facilities: terminal, fuel farm, roads, archeological areas, and other improvements.	\$67,050	\$67,050	\$1,365,900	\$1,500,000
2014	Terminal Development:<Improve/Modify/Rehabilitate> Terminal Building - Capacity	WTE improve. incl. possible relocation of rental car companies, TSA checkpoint expansions, & landside roadway improve. Conversion of extg. WTE facilities and/or demo & constr. of new facility to design standards for TSA checked baggage makeup area and more.	\$201,150	\$201,150	\$4,097,700	\$4,500,000
2014	Other:<Light/Mark/Remove> Obstructions [Hazard Only e.g., Approaches] - Safety/Security	ASR relocation site study. This study precedes design/constr Ph. Current ASR location is in the footprint of the eastside terminal development area. It must be relocated.	\$88,285	\$88,284	\$1,798,481	\$1,975,050
2014	Finance:Financing Costs - Other	Eastside terminal area benefit cost analysis is required for development of east side terminal complex and supporting facilities.	\$8,940	\$8,940	\$182,120	\$200,000
2014	Buildings:<Construct/Expand/Improve/Modify/Rehabilitate> Building - Standards	Const. foam retention basin for hangar 1084 to prevent foam from entering storm water system during fire event. In hangar 32 upgrade fire suppression system to foam. This would be a MAP project.	\$138,570	\$138,570	\$2,822,860	\$3,100,000
2014	Apron:Construct Apron - Capacity	Design through Ph. 1 constr. documents, apron (1 million sf), utilities, roadways, drainage, lighting & signage for east side terminal area.	\$273,788	\$273,787	\$5,577,425	\$6,125,000
2014	Apron:Construct Apron - Capacity	Constr. of alpha apron Ph.3 to NW (USFS lot), approx. 27,144 sy.	\$187,740	\$187,740	\$3,824,520	\$4,200,000
2014	Planning:Conduct Noise Compatibility Plan Study/Update	Update FAR Part 150 study.	\$25,702	\$25,703	\$523,595	\$575,000

Airport Projects - by Airport

Airport Name - County

FY	Project Component	Project Description	State Share	Local Share	Federal Share	Project Total
PHOENIX-MESA GATEWAY - MARICOPA						
2014	Taxiways:Extend Taxiway - Capacity	Twy L ext. Ph.2 constr. from Twy A into so. tract. Twy L is 2,600 ft x 75 ft, plus 35 ft shoulders. Includes lighting, drainage, signage & marking. Also Twy A to allow for radius connections. Design is a repackaging for bid.	\$259,260	\$259,260	\$5,281,480	\$5,800,000
2014	Apron, Rehabilitate	Design north apron Ph.1 recon/rehab sections 2,600 ft x 300 ft.	\$540,000	\$60,000	\$0	\$600,000
2015	Apron:Rehabilitate Apron - Reconstruction	North Apron Ph.1 Recon/Rehab sections 2,600 ft x 300 ft. Includes lighting, drainage, signage & markings.	\$424,650	\$424,650	\$8,650,700	\$9,500,000
2015	Other:<Construct/Improve/Repair> <Fuel Farm/Utilities> [MAP] - Other	Design/constr. fuel farm expansion Ph. 2 - Add two 50,000 gallon tanks to extg. Fuel farm. This would be a MAP project.	\$134,100	\$134,100	\$2,731,800	\$3,000,000
2015	Runways:Rehabilitate Runway - Reconstruct	Design/recon. 1,000 ft x 150 ft to approach end of Rwy 30C, with 35 ft Rwy shoulders, including lighting, drainage, signage & marking.	\$122,123	\$122,123	\$2,487,814	\$2,732,060
2015	Taxiways:Extend Taxiway - Capacity	Constr. Twy C Ph.2 from Twy J to Twy L ext. 3,000 ft x 75 ft with 35 ft Twy shoulders, including lighting, drainage, signage & marking.	\$277,449	\$277,449	\$5,652,019	\$6,206,917
2015	Taxiways:Extend Taxiway - Capacity	Constr. Twy C Ph.3 from Twy L to Twy P 4,100 ft x 75 ft with 35 ft Twy shoulders including lighting, drainage, signage & marking.	\$380,001	\$380,000	\$7,741,134	\$8,501,135
2015	Taxiways:Rehabilitate Taxiway - Reconstruct	Design/Recon. Twy G at Twy B Hammerhead, adjacent to Rwy 12R to Twy Y, approx. 500 ft x 150 ft plus 7,000 sy ACP for Twy shoulders including lighting, drainage, signage & marking.	\$60,718	\$60,718	\$1,236,908	\$1,358,344
2015	Terminal Development:Construct Terminal Building - Capacity	Construct east side terminal area infrastructure per AMP. Gateway 2030 Ph. 1 costs show \$2.0M for site work and infrastructure, and \$41.0M for roadways.	\$1,880,976	\$1,880,976	\$38,318,048	\$42,080,000
2015	APMS - Runway Pavement Preservation	Thin Overlay/PFC RW12C30CWG 20.	\$1,019,293	\$113,255	\$0	\$1,132,548
2015	Taxiway, Rehabilitate	Design/recon. Twy V Ph.2 between Twy B and Twy A (intersection west on Twy V), 430 ft X 100 ft with 35 ft Twy shoulders including lighting, drainage, signage & marking.	\$1,062,000	\$118,000	\$0	\$1,180,000
2016	Terminal Development:Construct Terminal Building - Capacity	Design/constr. east terminal building Ph.1 approx. 300,000 sf.	\$7,777,800	\$7,777,800	\$158,444,400	\$174,000,000
2016	Taxiways:Rehabilitate Taxiway - Reconstruct	Recon. Twy A between Twy N to Twy L 2,100 ft x 75 ft with 35 ft Twy shoulders. Includes lighting, drainage, signage & marking.	\$145,275	\$145,275	\$2,959,450	\$3,250,000
2016	Apron:Construct Apron - Capacity	Constr. east terminal area apron, approx. 1 million sf. Includes lighting, drainage, signage & markings.	\$1,117,500	\$1,117,500	\$22,765,000	\$25,000,000
2016	Taxiways:Rehabilitate Taxiway - Reconstruct	Recon. Twy K between Rwy 12R & Rwy 12C, 320 ft x 150 ft to Twy K, including lighting, drainage, signage & marking.	\$47,158	\$47,159	\$960,683	\$1,055,000

Airport Projects - by Airport

Airport Name - County

FY	Project Component	Project Description	State Share	Local Share	Federal Share	Project Total
PHOENIX-MESA GATEWAY - MARICOPA						
2017	Other:Improve Airport <Drainage/Erosion Control/Miscellaneous Improvements> - Standards	Twy T drain. improve. in so. central apron area, connecting northeasterly, includes site prep for Twy T ext. Includes south apron tango Ph. 2. 2,500 ft of 18 in.to 54 in. drain lines.	\$156,450	\$156,450	\$3,187,100	\$3,500,000
2017	Apron:Rehabilitate Apron - Reconstruction	Const. Ph.1 & Ph.2 of A/C runup area to accommodate larger A/C (Group III) for engine maintenance runs. Area is 260 ft x 390 ft, may include jet blast fence or other means of safety & sound suppression.	\$162,038	\$162,037	\$3,300,925	\$3,625,000
2017	Airport Drainage, Improve	Design/constr. Detention basin SE to ultimate size.	\$1,620,000	\$180,000	\$0	\$1,800,000
2017	Airport Drainage, Improve	Design/constr. Rwy drainage improvements between Rwys 12R/30L & 12C/30C south of Twy K.	\$576,000	\$634,000	\$0	\$1,210,000
2018	Taxiways:Construct Taxiway [Includes Relocation]	Design/constr. Ext. of Twy H Ph.2 from 12R/30L to Rwy 12L/30R. Extension is 2,300 ft x 75 ft with 35 ft paved Twy shoulders. Includes lighting, drainage, signage & marking.	\$236,019	\$236,019	\$4,808,030	\$5,280,068
2018	Taxiways:Rehabilitate Taxiway - Reconstruct	Design & recon. Twy M between Twy A and Rwy 12C/30C as a Group V twy. Pavement surface is 2,026 ft x 75 ft with 35 ft Twy shoulders. Includes lighting, drainage, signage & marking.	\$209,500	\$209,500	\$4,267,800	\$4,686,800
2018	Taxiway, Rehabilitate	Design/Recon. a section of Twy W located no. of Twy W/Twy T intersection, 22 ft X 405 ft.	\$1,027,800	\$114,200	\$0	\$1,142,000
2018	Planning:Conduct <Environmental Assessment/Environmental Impact Statement/Feasibility> <Study/Update>	Conduct EA for Rwy ext. to increase Rwy 12L/30R to 10,300 ft.	\$13,410	\$13,410	\$273,180	\$300,000
Airport Total:			\$20,692,751	\$16,067,112	\$302,467,059	\$339,226,922
POLACCA - NAVAJO						
2014	Apron:Construct Apron - Standards	Design/constr. apron (11,513 sy).	\$0	\$59,004	\$600,996	\$660,000
2014	Runways:Construct Runway - Capacity	Design and constr. Rwy 3/21 (5,000 ft x 75 ft).	\$0	\$241,380	\$2,458,620	\$2,700,000
2015	Runways:Install Runway Lighting (HIRL, MIRL, TDZ, LAHSO Or CL) - Standards	Install Rwy lighting including beacon, REILS and lighted windcone.	\$0	\$46,935	\$478,065	\$525,000
2016	Buildings:<Construct/Expand/Imp/Modify/Rehabilitate> <Snow Removal Equipment/Chemical Storage Building/etc.> - Standards	Constr. SRE Building (40 ft x 50 ft).	\$0	\$31,290	\$318,710	\$350,000
2017	Taxiways:Construct Taxiway - Capacity	Design/Constr. bypass Twys w/ edge lighting at each end of the Rwy 3/21 (225 ft x 25 ft).	\$0	\$46,935	\$478,065	\$525,000
2018	Equipment:Acquire Security Equipment/Install Fencing [Required By Part 107] - Safety/Security	Install perimeter fencing (approx. 15,300 lf) and associated gates.	\$0	\$44,700	\$455,300	\$500,000
Airport Total:			\$0	\$470,244	\$4,789,756	\$5,260,000

Airport Projects - by Airport

Airport Name - County

FY	Project Component	Project Description	State Share	Local Share	Federal Share	Project Total
RYAN FIELD - PIMA						
2014	Ground Transportation:<Construct/Expand/Improve/Modify/Rehabilitate> Service Road - Other	Const. 24 ft wide asphalt service road (approx. 3,400 sy). Includes grading, paving, striping, signage and appurtenances.	\$10,592	\$10,592	\$215,776	\$236,960
2014	Airport Drainage, Improve	EA to identify future drainage improvement impacts on natural, cultural and social environments. Includes inventory of environmental resources, an analysis of impacts, potential mitigation measures and/or findings of no impact.	\$85,500	\$9,500	\$0	\$95,000
2014	Runway MIRL/HIRL, Install	Install MIRL (approx. 260 each) & MITL (approx. 52 each) lighting system and signage on Rwy 15/33, Twys D, D1, D2, D3 and E with appurtenances.	\$1,777,581	\$197,509	\$0	\$1,975,090
2014	Equipment:Acquire Security Equipment/Install Perimeter Fencing [Not Part 107] - Standards	Constr. roadway w/plung basins (approx. 800 cy) and 6 ft chainlink w/ 3-strand barbed wire at 3 storm water locations along Ajo Highway that discharge into the airfield. Includes grading, fencing, gates, rip rap, cutoff walls and appurtenances, Ph.3.	\$41,508	\$41,508	\$845,574	\$928,590
2015	APMS - Taxiway Pavement Preservation	Thin Overlay/PFC TWDRY 20.	\$198,968	\$22,108	\$0	\$221,076
2015	Airport Drainage, Improve	Upgrade extg. airfield drainage adjacent to Rwy 6R/24L and development areas C & D to improve infield drainage to north. Includes grading, piping, channelization of extg. washes and appurtenances.	\$1,197,000	\$133,000	\$0	\$1,330,000
2015	APMS - Taxiway Pavement Preservation	Thin Overlay/PFC TWBRY 20.	\$364,830	\$40,537	\$0	\$405,367
2016	Apron, Construct (New)	Constr. new asphalt aircraft parking apron (approx. 15,000 sy). Includes grading, drainage, paving, striping, area lighting, utilities and appurtenances.	\$1,394,640	\$154,960	\$0	\$1,549,600
2016	Other:Improve Airport <Drainage/Erosion Control/Miscellaneous Improvements> - Standards	Constr. an earth dike (approx. 3,500 lf) and adjacent drainage channel in accordance with FEMA standards. Ph. 1.	\$108,605	\$108,605	\$2,212,432	\$2,429,642
2017	Land For Protection (Safety Areas), Acquire	Acquisition of 79.8 acres for Rwy 15 RPZ (Parcel 1).	\$715,860	\$79,540	\$0	\$795,400
2018	APMS - Taxiway Pavement Preservation	Thin Overlay/PFC TWDRY 10.	\$109,921	\$12,213	\$0	\$122,134
2018	APMS - Runway Pavement Preservation	Thin Overlay/PFC RW1533RY 10.	\$402,203	\$44,689	\$0	\$446,892
2018	APMS - Taxiway Pavement Preservation	Crack Seal and Rubberized Asphalt Emulsion Seal Coat TWBRY 10.	\$71,888	\$7,988	\$0	\$79,876
2018	Apron:Construct Apron - Capacity	Constr. of a new asphalt A/C parking apron (41,200 sy) and vehicle parking lot. Project includes grading, drainage, paving, striping area lighting, utilities and appurtenances.	\$183,128	\$183,128	\$3,730,564	\$4,096,820
2018	APMS - Taxiway Pavement Preservation	Crack Seal and Rubberized Asphalt Emulsion Seal Coat TWERY 10.	\$31,265	\$3,474	\$0	\$34,739
2018	Planning:<Conduct/Update> <Airport Master Plan Study {ALP, EA, etc.}>	Master plan update (includes: forecasts, development alternatives and financial plans). Also includes preparation of strategic plan and security assessment.	\$18,774	\$18,774	\$382,452	\$420,000
Airport Total:			\$6,712,263	\$1,068,125	\$7,386,798	\$15,167,186

Airport Projects - by Airport

Airport Name - County

FY	Project Component	Project Description	State Share	Local Share	Federal Share	Project Total
SAFFORD RGNL - GRAHAM						
2014	Apron:Construct Apron - Capacity	Recon. main transient parking apron (approx. 10 total acres), includes apron markings & new tie-down configuration. RSA improvements include clearing and grubbing to remove brush & debris, & replacement of signs not conforming to FAA A/C 150/5340-18.	\$62,580	\$62,580	\$1,274,840	\$1,400,000
2014	Runways:Rehabilitate Runway - Reconstruct	Design only for the recon. of Rwy 8/26 (4,800 lf x 60 lf), remove Twy A2, update Rwy 12/30 markings.	\$8,046	\$8,046	\$163,908	\$180,000
2014	Runway MIRL/HIRL, Install	Constr. Rwy 8/26 edge lighting system (LED), replace extg. electrical vault (15 ft x 45 ft), airfield signage (LED), replace approx. 11,000 lf of extg. direct-bury circuit with duct-encased circuit and home run electrical circuit.	\$180,000	\$20,000	\$0	\$200,000
2014	Planning:Conduct <Environmental Assessment/Environmental Impact Statement/Feasibility> <Study/Update>	EA of the land within the RPZs for land acquisition.	\$5,588	\$5,587	\$113,825	\$125,000
2015	APMS - Runway Pavement Preservation	Mill and Replace PFC RW826SF 10.	\$675,868	\$75,097	\$0	\$750,965
2015	Other:<Light/Mark/Remove> Obstructions [Hazard Only e.g., Approaches] - Safety/Security	Relocate fence at approach end of Rwy 12, remove FAR Part 77 obstructions (vegetation), place lighting on obstructions at Rwy 12 end, remove the extg. former military building near the terminal.	\$8,270	\$8,269	\$168,461	\$185,000
2015	Runways:Rehabilitate Runway - Reconstruct	Recon. Rwy 8/26 (4800 lf x 60 lf), remove Twy A2, update Rwy 12/30 markings.	\$35,760	\$35,760	\$728,480	\$800,000
2016	Land:Acquire Land/Easement For Approaches	Purchase property within the RPZ (approx. 18 acres).	\$4,470	\$4,470	\$91,060	\$100,000
2017	Equipment:Acquire Security Equipment/Install Fencing [Required By Part 107] - Safety/Security	Design only - Replace extg. perimeter fence and deteriorated fencing with security fencing (approx. 11,000 lf).	\$5,588	\$5,587	\$113,825	\$125,000
2018	APMS - Apron Pavement Preservation	Thin Asphalt Overlay/PFC A01SF 10.	\$598,183	\$66,465	\$0	\$664,648
2018	Planning:<Conduct/Update> <Airport Master Plan Study {ALP, EA, etc.}>	Update airport master plan.	\$8,940	\$8,940	\$182,120	\$200,000
2018	Equipment:Acquire Security Equipment/Install Fencing [Required By Part 107] - Safety/Security	Constr.only - Replace extg. perimeter fence and deteriorated fencing with security fencing (approx. 11,000 lf).	\$44,700	\$44,700	\$910,600	\$1,000,000
Airport Total:			\$1,637,993	\$345,501	\$3,747,119	\$5,730,613
SAN CARLOS APACHE - GILA						
2014	Other:<Construct/Improve/Repair> <Fuel Farm/Utilities> [MAP] - Other	Constr. fuel farm - jet A and avgas - east of the extg. west tiedown ramp: Ph. 2.	\$0	\$13,410	\$136,590	\$150,000
2015	Taxiways:Rehabilitate Taxiway - Reconstruct	Crack seal, fog seal, and remark Twy A, A1, A2, A3, A4, A5, and A6 (33,000 sy) (design & constr.).	\$0	\$8,940	\$91,060	\$100,000
2015	Runways:Rehabilitate Runway - Reconstruct	Crack seal, fog seal, and remark Rwy 9/27 (72,250 sy) (design & constr.).	\$0	\$27,714	\$282,286	\$310,000
2015	Apron:Rehabilitate Apron - Reconstruction	Crack seal, fog seal, and remark east and west aprons (36,450 sy) (design & constr.).	\$0	\$8,940	\$91,060	\$100,000

Airport Projects - by Airport

Airport Name - County

FY	Project Component	Project Description	State Share	Local Share	Federal Share	Project Total
SAN CARLOS APACHE - GILA						
2016	Apron:Install Apron Lighting - Standards	Install area lighting around the apron.	\$0	\$8,940	\$91,060	\$100,000
2017	Other:Improve Airport <Drainage/Erosion Control/Miscellaneous Improvements> - Standards	Grading and drainage mitigation on the south side of Rwy 9/27 to allow drainage into the wash.	\$0	\$44,700	\$455,300	\$500,000
2018	Taxiways:Install Taxiway Lighting (e.g., SMGCS, Reflectors, MITL) - Standards	Install lighting and signage on Twys A, A1, A2, A3, A4, A5 ,and A6.	\$0	\$34,866	\$355,134	\$390,000
Airport Total:			\$0	\$147,510	\$1,502,490	\$1,650,000
SAN MANUEL - PINAL						
2014	Apron, Rehabilitate	Design rehab. of extg. parking ramp to include possible milling, crack seal, seal coat, and localized recon.(approx. 20,500 sy).	\$45,000	\$5,000	\$0	\$50,000
2014	Planning:<Conduct/Update> <Airport Master Plan Study {ALP, EA, etc.}>	Perform an airport master plan update.	\$8,940	\$8,940	\$182,120	\$200,000
2015	Apron:Rehabilitate Apron - Reconstruction	Constr. of apron rehab. (20,500 sy) to include milling, crack sealing, seal coating, re-striping, and localized recon. as needed.	\$17,880	\$17,880	\$364,240	\$400,000
2015	Land For Protection (Safety Areas), Acquire	EA for land acquisition (approx. 155 acres; Parcel No. 307-05-014-B).	\$180,000	\$20,000	\$0	\$200,000
2016	Land:Acquire <Land/Easement> For Development/Relocation	Land acquisition of airport property (approx. 155 acres; Parcel No. 307-05-014-B).	\$22,350	\$22,350	\$455,300	\$500,000
2017	Taxiways:<Extend/Widen/Strengthen> Taxiway - Standards	Design Twy A and connector Twy extension (approx. 900 ft x 35 ft) to Rwy 29.	\$1,341	\$1,341	\$27,318	\$30,000
2018	Taxiways:<Extend/Widen/Strengthen> Taxiway - Standards	Constr. Twy A extension and connector Twy to Rwy 29 (approx. 900 ft x 35 ft).	\$13,410	\$13,410	\$273,180	\$300,000
Airport Total:			\$288,921	\$88,921	\$1,302,158	\$1,680,000
SCOTTSDALE - MARICOPA						
2014	Runway, Strengthen	Strengthen Rwy 3/21 (Project 14-1), 8,250 ft x 100 ft (110,000 sy).	\$2,000,000	\$222,222	\$0	\$2,222,222
2014	Planning:Conduct <Environmental Assessment/Environmental Impact Statement/Feasibility> <Study/Update>	Prepare an EA for a 10 acre parcel of land on the east side of the airport needed to provide additional airport capacity (APN 215-56-226 & 215-56-227).	\$11,175	\$11,175	\$227,650	\$250,000
2014	Runways:<Extend/Widen/Strengthen> Runway [To Meet Standards] - Standards	Strengthen Rwy 3/21 to 100,000 pounds DWL (8,250 ft x 100 ft) - 110,000 sy. The project also includes improving the Rwy shoulders, blast pads, and new MITL.	\$402,300	\$402,300	\$8,195,400	\$9,000,000
2014	Taxiways:Rehabilitate Taxiway - Reconstruct	Recon. of parallel Twy A and exits (14,600 ft x 40 ft), approx. 88,000 sy, (including shoulders, MITL, and guidance signs).	\$402,300	\$402,300	\$8,195,400	\$9,000,000
2015	Apron, Rehabilitate	Recon.of the delta apron, 840 ft x 400 ft (37,300 sy).	\$2,000,000	\$222,222	\$0	\$2,222,222
2015	APMS - Taxiway Pavement Preservation	Crack Seal and Rubberized Asphalt Emulsion Seal Coat TWCSC 10.	\$38,005	\$4,223	\$0	\$42,228

Airport Projects - by Airport

Airport Name - County

<i>FY</i>	<i>Project Component</i>	<i>Project Description</i>	<i>State Share</i>	<i>Local Share</i>	<i>Federal Share</i>	<i>Project Total</i>
SCOTTSDALE - MARICOPA						
2015	Apron:Rehabilitate Apron - Reconstruction	Recon. the delta apron (approx. 840 ft x 400 ft), 37,300 sy, located on the west side of the airfield at the south end of the airport.	\$111,750	\$111,750	\$2,276,500	\$2,500,000
2015	APMS - Taxiway Pavement Preservation	Crack Seal and Rubberized Asphalt Emulsion Seal Coat TWASC 10.	\$183,086	\$20,343	\$0	\$203,429
2015	APMS - Apron Pavement Preservation	Crack Seal and Rubberized Asphalt Emulsion Seal Coat A01SC 30.	\$129,970	\$14,441	\$0	\$144,411
2015	APMS - Taxiway Pavement Preservation	Crack Seal and Rubberized Asphalt Emulsion Seal Coat TWBSC 10.	\$157,649	\$17,517	\$0	\$175,166
2015	Land:Acquire <Land/Easement> For Development/Relocation	Partial reimbursement for a 10 acre parcel of land on the east side of the airport needed to provide additional airport capacity (APN 215-56-226 & 215-56-227), Ph.1.	\$111,750	\$111,750	\$2,276,500	\$2,500,000
2016	Land:Acquire <Land/Easement> For Development/Relocation	Partial reimbursement for a 10 acre parcel of land on the east side of the airport needed to provide additional airport capacity (APN 215-56-226 & 215-56-227), Ph. 2.	\$111,750	\$111,750	\$2,276,500	\$2,500,000
2016	Taxiways:Rehabilitate Taxiway - Reconstruct	Recon. Twy C, approx. 800 ft x 40 ft (3,600 sy).	\$15,645	\$15,645	\$318,710	\$350,000
2017	Land:Acquire <Land/Easement> For Development/Relocation	Partial reimbursement for a 10 acre parcel of land on the east side of the airport needed to provide additional airport capacity (APN 215-56-226 & 215-56-227), Ph. 3.	\$111,750	\$111,750	\$2,276,500	\$2,500,000
2017	Taxiways:Construct Taxiway - Capacity	Constr. of hangar Twys including site preparation, drainage, and utilities on the 10 acres development site.	\$58,110	\$58,110	\$1,183,780	\$1,300,000
2018	Land For Development, Acquire	Partial reimb. for a 10 acre parcel of land on the east side of the Airport for additional airport capacity (APN 215-56-226 & 215-56-227),	\$2,000,000	\$222,222	\$0	\$2,222,222
2018	APMS - Taxiway Pavement Preservation	Mill and Replace PFC TWASC 10.	\$1,285,137	\$142,793	\$0	\$1,427,930
2018	APMS - Apron Pavement Preservation	Crack Seal and Rubberized Asphalt Emulsion Seal Coat A01SC 10, 20.	\$569,411	\$63,268	\$0	\$632,679
2018	Land:Acquire <Land/Easement> For Development/Relocation	Partial reimbursement for a 10 acre parcel of land on the east side of the Airport needed to provide additional airport capacity (APN 215-56-226 & 215-56-227), Ph. 4.	\$111,750	\$111,750	\$2,276,500	\$2,500,000
Airport Total:			\$9,811,537	\$2,377,532	\$29,503,440	\$41,692,509

Airport Projects - by Airport

Airport Name - County

FY	Project Component	Project Description	State Share	Local Share	Federal Share	Project Total
SEDONA - YAVAPAI						
2014	Ground Transportation:<Construct/Expand/Improve/Modify/Rehabilitate> Access Road - Capacity	Constr. terminal parking lot rehab. & expansion (200 ft x 300 ft) & recon. airport entrance road. Install roadway & parking lot lighting.	\$31,290	\$31,290	\$637,420	\$700,000
2014	Airport Drainage, Improve	Constr. infield area grading & drainage improvements between Rwy 3/21 & Twy A.	\$540,000	\$60,000	\$0	\$600,000
2014	Apron, Rehabilitate	Constr. taxilanes B1 (350 ft x 50 ft) and B2 (350 ft x 60 ft) pavement recon.	\$315,000	\$35,000	\$0	\$350,000
2014	Apron, Rehabilitate	Constr. taxilanes B3 (350 ft x 60 ft), B4 (300 ft x 60 ft), and B5 (250 ft x 60 ft) pavement rehab.	\$108,000	\$12,000	\$0	\$120,000
2015	Planning:<Conduct/Update> <Airport Master Plan Study {ALP, EA, etc.}>	Conduct airport master plan update.	\$13,410	\$13,410	\$273,180	\$300,000
2015	Apron:Expand Apron - Capacity	Design and constr. southwest apron expansion, Ph. 2 (300 ft x 580 ft) and self fueling island.	\$62,580	\$62,580	\$1,274,840	\$1,400,000
2016	Apron:Rehabilitate Apron - Reconstruction	Design apron D rehab. (15,000 sy).	\$5,364	\$5,364	\$109,272	\$120,000
2017	APMS - Apron Pavement Preservation	Thin Asphalt Overlay/PFC A03SD 10.	\$37,881	\$4,209	\$0	\$42,090
2017	Apron:Rehabilitate Apron - Reconstruction	Constr. apron D rehab. (15,000 sy).	\$35,760	\$35,760	\$728,480	\$800,000
2017	Perimeter/Service Road, Construct (New)	Design perimeter road (5,500 ft x 20 ft).	\$90,000	\$10,000	\$0	\$100,000
2017	APMS - Apron Pavement Preservation	Crack Seal and Rubberized Asphalt Emulsion Seal Coat A02SD 10, 20.	\$109,959	\$12,218	\$0	\$122,177
2017	APMS - Apron Pavement Preservation	Crack Seal and Rubberized Asphalt Emulsion Seal Coat A01SD 20.	\$20,255	\$2,251	\$0	\$22,506
2017	APMS - Apron Pavement Preservation	Thin Asphalt Overlay/PFC A01SD 10.	\$179,044	\$19,894	\$0	\$198,938
2017	Other:<Construct/Rehabilitate> Parking Lot [Non Revenue Producing-Non Hub/MAP] - Other	Design auxiliary parking lot (8,000 sy).	\$3,576	\$3,576	\$72,848	\$80,000
2018	APMS - Runway Pavement Preservation	Crack Seal and Rubberized Asphalt Emulsion Seal Coat RW321SD 10.	\$188,346	\$20,927	\$0	\$209,273
2018	Other:<Construct/Rehabilitate> Parking Lot [Non Revenue Producing-Non Hub/MAP] - Other	Constr. auxiliary parking lot (8,000 sy).	\$40,230	\$40,230	\$819,540	\$900,000
2018	Ground Transportation:<Construct/Expand/Improve/Modify/Rehabilitate> Service Road - Other	Constr. perimeter road (5,500 ft x 20 ft).	\$17,880	\$17,880	\$364,240	\$400,000
2018	Apron, Construct (New)	Design ramp B expansion (13,000 sy).	\$126,000	\$14,000	\$0	\$140,000
Airport Total:			\$1,924,575	\$400,589	\$4,279,820	\$6,604,984

SHOW LOW RGNL - NAVAJO

2014	APMS - Taxiway Pavement Preservation	Crack Seal and Rubberized Asphalt Emulsion Seal Coat TWASL 10.	\$139,934	\$15,548	\$0	\$155,482
2014	APMS - Taxiway Pavement Preservation	Crack Seal and Rubberized Asphalt Emulsion Seal Coat TWDSL 10.	\$3,300	\$367	\$0	\$3,667
2014	Other:<Light/Mark/Remove> Obstructions [Hazard Only e.g., Approaches] - Safety/Security	Bury 69kV and 15kV overhead power lines (approx. 4,000 lf) west of Rwy 6 approach.	\$12,500	\$12,500	\$475,000	\$500,000

Airport Projects - by Airport

Airport Name - County

FY	Project Component	Project Description	State Share	Local Share	Federal Share	Project Total
SHOW LOW RGNL - NAVAJO						
2014	APMS - Runway Pavement Preservation	Crack Seal and Rubberized Asphalt Emulsion Seal Coat RW321SL 10.	\$77,373	\$8,597	\$0	\$85,970
2014	Taxiways:Rehabilitate Taxiway - Reconstruct	Update sign & marking plan & remark Twy A, A1, A2, A4, and A5.	\$1,500	\$1,500	\$57,000	\$60,000
2014	Runways:Rehabilitate Runway - Reconstruct	Rehab. Rwy 6/24 (7,200 ft x 100 ft) mill & overlay.	\$55,000	\$55,000	\$2,090,000	\$2,200,000
2015	Planning:Conduct <Environmental Assessment/Environmental Impact Statement/Feasibility> <Study/Update>	EA to constr. Rwy 18/36 and parallel Twy D.	\$7,500	\$7,500	\$285,000	\$300,000
2015	Other:Construct Deicing Containment Facility - Standards	Constr. deicing containment facility.	\$7,500	\$7,500	\$285,000	\$300,000
2016	Apron:Construct Apron - Capacity	Constr. apron east of terminal building (16,000 sy).	\$42,500	\$42,500	\$1,615,000	\$1,700,000
2017	Planning:Conduct <Environmental Assessment/Environmental Impact Statement/Feasibility> <Study/Update>	Wildlife hazard management plan & implementation.	\$7,500	\$7,500	\$285,000	\$300,000
2017	APMS - Runway Pavement Preservation	Thin Asphalt Overlay/PFC RW624SL 10.	\$28,896	\$3,211	\$0	\$32,107
2018	APMS - Taxiway Pavement Preservation	Mill and Replace PFC TWEMF 10.	\$678,560	\$75,395	\$0	\$753,955
2018	Runways:Construct Runway - Capacity	Design/constr. Rwy 18/36 (5,500 ft x 75 ft).	\$6,250	\$6,250	\$237,500	\$250,000
Airport Total:			\$1,068,313	\$243,368	\$5,329,500	\$6,641,181

SIERRA VISTA MUNI-LIBBY AAF - COCHISE

2014	Taxiways:Install Taxiway Lighting (MITL) [Required By Part 139] - Safety/Security	Constr. Twy P signing and lighting - Ph. 1 - install approx. 6,000 lf of required signage and lighting.	\$53,640	\$53,640	\$1,092,720	\$1,200,000
2014	Planning:<Conduct/Update> <Airport Master Plan Study {ALP, EA, etc.}>	EA of approx. 9,000 lf x 75 ft wide of Twy J, A and B extension, Ph. 4; Twy J extension project will create a civilian side parallel Twy to main Rwy 08/26.	\$17,880	\$17,880	\$364,240	\$400,000
2014	Buildings:<Construct/Expand/Improve/Modify/Rehabilitate> Aircraft Rescue & Fire Fighting Building [Pt. 139 Only] - Safety/Security	Design new 120,000 gallon water storage tank and 1,000 GPM fire pump - 1,200 LF - 8 inch water line, hydrants.	\$6,705	\$6,705	\$136,590	\$150,000
2015	Taxiways:Install Taxiway Lighting (MITL) [Required By Part 139] - Safety/Security	Constr. Twy P signing and lighting - Ph.2 - install approx. 6,000 lf of required signage and lighting.	\$53,640	\$53,640	\$1,092,720	\$1,200,000
2015	Buildings:<Construct/Expand/Improve/Modify/Rehabilitate> Aircraft Rescue & Fire Fighting Building [Pt. 139 Only] - Safety/Security	Constr. of fire system upgrades including new 120,000 gallon storage tank, 1,000 GPM fire pump, 1,200 LF - 8 inch line, and hydrant installation.	\$33,525	\$33,525	\$682,950	\$750,000
2016	Taxiways:<Extend/Widen/Strengthen> Taxiway - Standards	Design approx. 7,000 lf x 75 ft wide of Twy J extension, 2,000 lf of adjoining Twy A & B Ph. 4. Twy J extension project will create a civilian side parallel Twy to main Rwy 08/26.	\$20,115	\$20,115	\$409,770	\$450,000
2017	Taxiways:Construct Taxiway - Capacity	Constr. approx. 4,500 lf x 75 ft wide of Twy J extension Ph. 4 and adjoining 1,000 lf of Twy B extension. The Twy J extension project will create a civilian side parallel Twy to main Rwy 08/26.	\$100,575	\$100,575	\$2,048,850	\$2,250,000

Airport Projects - by Airport

Airport Name - County

FY	Project Component	Project Description	State Share	Local Share	Federal Share	Project Total
SIERRA VISTA MUNI-LIBBY AAF - COCHISE						
2018	Taxiways:Construct Taxiway - Capacity	Constr. approx. 2,500 lf x 75 ft of Twy J extension - Ph. 4 and 1,000 of of adjoining Twy A. The Twy J extension project will create a civilian side parallel Twy to main Rwy 08/26.	\$55,875	\$55,875	\$1,138,250	\$1,250,000
Airport Total:			\$341,955	\$341,955	\$6,966,090	\$7,650,000
SPRINGERVILLE MUNI - APACHE						
2014	Runways:<Construct/Extend/Improve> Runway Safety Area [Non-Primary Airports] - Standards	Design & constr. safety area improvements & fencing on Rwy 3 end. Once the safety area is graded, fencing will be installed (approx. 3,500 lf).	\$13,410	\$13,410	\$273,180	\$300,000
2014	Other:Install <Guidance/Other> Signs [Not Part 139] - Standards	Airport signage plan.	\$1,118	\$1,117	\$22,765	\$25,000
2014	Planning:Conduct <Environmental Assessment/Environmental Impact Statement/Feasibility> <Study/Update>	Conduct an EA for the Twy A relocation and fuel island relocation.	\$7,822	\$7,823	\$159,355	\$175,000
2014	Land:Acquire Land/Easement For Approaches	Provide land acquisition services (appraisals and surveys) for the future acquisition of land within the Rwy 3 safety area (approx. 2.17 acres).	\$3,800	\$3,799	\$77,401	\$85,000
2015	Land:Acquire Land/Easement For Approaches	Acquisition of land within the Rwy 3 safety area (approx. 2.17 acres).	\$3,352	\$3,353	\$68,295	\$75,000
2015	Other:<Construct/Improve/Repair> <Fuel Farm/Utilities> [MAP] - Other	Design & constr. the relocation of the fuel island.	\$8,940	\$8,940	\$182,120	\$200,000
2015	Other:<Light/Mark/Remove> Obstructions - Standards	Design & constr. obstruction removal - The existing terminal building is an obstruction to the RVZ and requires removal.	\$20,115	\$20,115	\$409,770	\$450,000
2015	Taxiways:Construct Taxiway [Includes Relocation]	Design Twy A relocation 50 ft to the southeast to meet design group B-II standards (approx. 35 ft x 8,422 ft).	\$4,917	\$4,917	\$100,166	\$110,000
2016	Taxiways:Construct Taxiway [Includes Relocation]	Constr. Twy A relocation, Ph. 1. Relocate Twy A 50 ft to the southeast to meet design group B-II standards (approx. 3,400 ft x 35 ft).	\$36,654	\$36,654	\$746,692	\$820,000
2016	Planning:<Conduct/Update> <Airport Master Plan Study {ALP, EA, etc.}>	Update the current ALP to reflect changing activity at the airport.	\$3,800	\$3,799	\$77,401	\$85,000
2017	Taxiways:Construct Taxiway [Includes Relocation]	Constr. Twy A relocation, Ph. 2 . Relocate Twy A 50 feet to the southeast to meet design group B-II standards (2,200 ft x 35 ft).	\$18,327	\$18,327	\$373,346	\$410,000
2017	Planning:Conduct <Environmental Assessment/Environmental Impact Statement/Feasibility> <Study/Update>	Conduct an EA for the future Twy B extension. Twy B will be extended from intersection of Rwy 3/21 to Rwy 11 end (approx. 1,500 lf).	\$7,822	\$7,823	\$159,355	\$175,000
2018	Taxiways:Extend Taxiway - Capacity	Design Twy B extension - Twy B will be extended from the intersection of Rwy 3/21 to the Rwy 11 end (approx. 1,500 lf).	\$1,475	\$1,475	\$30,050	\$33,000

Airport Projects - by Airport

Airport Name - County

FY	Project Component	Project Description	State Share	Local Share	Federal Share	Project Total
SPRINGERVILLE MUNI - APACHE						
2018	Taxiways:Construct Taxiway [Includes Relocation]	Constr. Twy A relocation, Ph. 3. Relocate Twy A 50 ft to the southeast to meet design group B-II standards (2,800 ft x 35 ft).	\$45,808	\$45,807	\$933,166	\$1,024,781
2018	APMS - Runway Pavement Preservation	Crack Seal and Rubberized Asphalt Emulsion Seal Coat RW1129SP 10.	\$102,841	\$11,427	\$0	\$114,268
2018	APMS - Runway Pavement Preservation	Crack Seal and Rubberized Asphalt Emulsion Seal Coat RW321SJ 10.	\$73,652	\$8,183	\$0	\$81,835
Airport Total:			\$353,853	\$196,969	\$3,613,062	\$4,163,884
ST JOHNS INDUSTRIAL AIR PARK - APACHE						
2014	Taxiways:Rehabilitate Taxiway - Reconstruct	Crack seal, fog seal, and remark Twy A east of Rwy 3/21 (2,150 ft x 35 ft).	\$5,722	\$5,721	\$116,557	\$128,000
2014	Guidance Signage, Install (New)	Install density altitude signs.	\$18,000	\$2,000	\$0	\$20,000
2014	Planning:Conduct <Environmental Assessment/Environmental Impact Statement/Feasibility> <Study/Update>	EA for land acquisition for RVZ, Rwy 32 RPZ and relocation of Twy A.	\$11,175	\$11,175	\$227,650	\$250,000
2014	Runways:Rehabilitate Runway - Reconstruct	Centerline joint recon. Rwy 14/32 (5,320 ft).	\$4,470	\$4,470	\$91,060	\$100,000
2016	Taxiways:Construct Taxiway [Includes Relocation]	Constr. Twy A - east of Rwy 3/21 (2,150 ft x 35 ft) - (constr. only).	\$37,324	\$37,325	\$760,351	\$835,000
Airport Total:			\$76,691	\$60,691	\$1,195,618	\$1,333,000
TAYLOR - NAVAJO						
2014	Other:Improve Airport <Drainage/Erosion Control/Miscellaneous Improvements> - Standards	Constr. chain link animal control perimeter fence (20,300 lf) to replace 4-strand barbed wire fence.	\$17,880	\$17,880	\$364,240	\$400,000
2015	Apron:Expand/Strengthen Apron - Standards	Reconfigure and constr. apron (300 ft x 400 ft) to east side of extg. apron to meet design standards.	\$3,352	\$3,353	\$68,295	\$75,000
2015	Other:<Construct/Improve/Repair> <Fuel Farm/Utilities> [MAP] - Other	Relocate and install new self serve Avgas fuel farm with provision for future Jet-A fuel.	\$1,564	\$1,565	\$31,871	\$35,000
2016	Apron:Construct Apron - Standards	Reconfigure and constr. apron (300 ft x 400 ft) to east side of extg. apron to meet design standards.	\$35,760	\$35,760	\$728,480	\$800,000
2016	APMS - Taxiway Pavement Preservation	Crack Seal and Rubberized Asphalt Emulsion Seal Coat TWATA 20	\$70,412	\$7,824	\$0	\$78,236
2016	APMS - Apron Pavement Preservation	Crack Seal and Rubberized Asphalt Emulsion Seal Coat TH01TA 20	\$11,183	\$1,243	\$0	\$12,426
2017	Other:<Construct/Improve/Repair> <Fuel Farm/Utilities> [MAP] - Other	Relocate and install new self serve Avgas fuel farm with provision for future Jet-A fuel.	\$8,493	\$8,493	\$173,014	\$190,000
2018	Ground Transportation:<Construct/Expand/Improve/Modify/Rehabilitate> Service Road - Other	Constr. access road (1,500 ft x 24 ft) along the SE side of the extg. hangar development area to hangars near Rwy 21 threshold.	\$12,963	\$12,963	\$264,074	\$290,000
Airport Total:			\$161,607	\$89,081	\$1,629,974	\$1,880,662

Airport Projects - by Airport

Airport Name - County

FY	Project Component	Project Description	State Share	Local Share	Federal Share	Project Total
TOMBSTONE MUNI - COCHISE						
2014	APMS - Runway Pavement Preservation	Crack Seal and Rubberized Asphalt Emulsion Seal Coat RW624TS 10	\$86,157	\$9,573	\$0	\$95,730
2014	APMS - Taxiway Pavement Preservation	Thin Overlay/PFC TWATS 10	\$39,738	\$4,415	\$0	\$44,153
Airport Total:			\$125,895	\$13,988	\$0	\$139,883
TUBA CITY - COCONINO						
2014	Runways:Rehabilitate Runway - Reconstruct	Recon. Rwy 15/33 (6,250 ft x 75 ft) (design only).	\$0	\$13,410	\$136,590	\$150,000
2015	Runways:Rehabilitate Runway - Reconstruct	Recon. Rwy 15/33 (6,250 ft x 75 ft) (constr. only) - Ph. 1.	\$0	\$89,400	\$910,600	\$1,000,000
2016	Runways:Rehabilitate Runway - Reconstruct	Recon. Rwy 15/33 (6,250 ft x 75 ft) (constr. only) - Ph. 2.	\$0	\$89,400	\$910,600	\$1,000,000
2017	Runways:Rehabilitate Runway - Reconstruct	Recon. Rwy 15/33 (6,250 ft x 75 ft) (constr. only) - Ph. 3.	\$0	\$89,400	\$910,600	\$1,000,000
2018	Runways:Install Runway Lighting (HIRL, MIRL, TDZ, LAHSO Or CL) - Standards	Replace edge lights on Rwy 15/33.	\$0	\$31,290	\$318,710	\$350,000
2018	Runways:Install Runway <Vertical/Visual> Guidance System [PAPI/VASI/REIL/ALS/etc.] - Standards	Install replacement visual aids on Rwy 15/33.	\$0	\$33,525	\$341,475	\$375,000
Airport Total:			\$0	\$346,425	\$3,528,575	\$3,875,000
TUCSON INTL - PIMA						
2014	Runway MIRL/HIRL, Install	Electrical upgrades for airfield lighting system -Ph. 4-final.	\$1,427,660	\$158,629	\$0	\$1,586,289
2014	Planning:Conduct <Environmental Assessment/Environmental Impact Statement/Feasibility> <Study/Update>	EIS for relocated Rwy 11R and associated Twys includes inventory of environmental resources, an assessment of alternatives, analysis of impacts, identification of potential mitigation measures and/or findings of no impact.	\$67,050	\$67,050	\$1,365,900	\$1,500,000
2014	Equipment:Acquire Equipment (e.g., Sweepers, etc.) - Standards	Procure two rider ramp sweeper/scrubbers for routine and emergency clean-up of ramp areas, Twys and Rwys.	\$15,489	\$15,488	\$315,523	\$346,500
2014	Apron:Rehabilitate Apron - Reconstruction	Remove and replace a portion of the main terminal apron (approx. 28,000 sy with 16 inch PCC - Ph. 2.	\$314,166	\$314,167	\$6,400,000	\$7,028,333
2015	Planning:<Conduct/Update> <Airport Master Plan Study {ALP, EA, etc.}>	Update 2005 security master plan to reflect current conditions and security requirements. Includes updated evaluation of extg. conditions, threat assessment, recommendations and phasing/implementation plan.	\$6,705	\$6,705	\$136,590	\$150,000
2015	Runway, Rehabilitate	Design of reconstr. of RWY 11L/29R, Twy A10 and Twy A13. Mill/replace surface course and appurtenances including adjustment of center line light fixtures for Twy A10 & A13, re-grooving and striping.	\$666,225	\$74,025	\$0	\$740,250

Airport Projects - by Airport

Airport Name - County

FY	Project Component	Project Description	State Share	Local Share	Federal Share	Project Total
TUCSON INTL - PIMA						
2015	Apron:Rehabilitate Apron - Reconstruction	Remove/replace a portion of main terminal parking apron (approx. 28,000 sy) with 16 inch PCC (Ph. 3).	\$314,166	\$314,167	\$6,400,000	\$7,028,333
2016	Apron, Rehabilitate	Remove/replace a portion of main terminal parking apron (approx. 6,900 sy) with 16 inch PCC (Ph. 4A).	\$1,305,000	\$145,000	\$0	\$1,450,000
2016	Runways:Rehabilitate Runway - Reconstruct	Recon. Rwy 11L/29R, Twy A10 and A13. Mill/replace surface course and appurtenances including adjustment of center line light fixtures for Twy A10 and A13, re-grooving and restriping.	\$423,796	\$423,797	\$8,633,312	\$9,480,905
2016	Apron:Rehabilitate Apron - Reconstruction	Remove/replace a portion of main terminal parking apron (approx. 28,000 sy) with 16 inch PCC (Ph. 4).	\$314,166	\$314,167	\$6,400,000	\$7,028,333
2017	Apron:Rehabilitate Apron - Reconstruction	Remove/replace a portion of main terminal parking apron (approx. 28,000 sy) with 16 inch PCC (Ph. 5).	\$314,166	\$314,167	\$6,400,000	\$7,028,333
2017	Runways:Construct Runway [Includes Relocation] - Standards	Design for proposed development of 150 ft X 11,000 ft PCC Rwy 11R/29L. Project includes relocation of extg. Rwy 11R/29L and const. of new parallel and center line Twys.	\$403,986	\$403,986	\$8,229,747	\$9,037,719
2018	Runway, Rehabilitate	Remove/replace a portion of main terminal parking apron (approx. 4,700 sy) with 16 inch PCC (Ph. 6A).	\$900,000	\$100,000	\$0	\$1,000,000
2018	Apron:Rehabilitate Apron - Reconstruction	Remove/replace a portion of main terminal parking apron (approx. 11,000 sy) with 16 inch PCC (Ph. 6).	\$111,750	\$111,750	\$2,276,500	\$2,500,000
Airport Total:			\$6,584,325	\$2,763,098	\$46,557,572	\$55,904,995
WHITERIVER - NAVAJO						
2014	Other:<Light/Mark/Remove> Obstructions - Standards	Obstruction survey for instrument approach.	\$0	\$8,940	\$91,060	\$100,000
2015	Other:<Light/Mark/Remove> Obstructions - Standards	BIA yard relocation: relocate equipment bay building, offices, mechanics area, and fuel farm (design only).	\$0	\$17,880	\$182,120	\$200,000
2016	Runways:Construct Runway - Capacity	Crack seal, fog seal, and remark Rwy 1/19 (6,350 ft x 75 ft), Twy A (6,350 ft x 35 ft), connector Twys (5 at 240 ft x 35 ft), apron (600 ft x 200 ft) and helicopter ops. area (design & constr.)	\$0	\$31,290	\$318,710	\$350,000
2016	Other:<Light/Mark/Remove> Obstructions - Standards	BIA yard relocation: relocate equipment bay building , office, mechanics area, and fuel farm (constr. only).	\$0	\$89,400	\$910,600	\$1,000,000
2017	Planning:Conduct <Environmental Assessment/Environmental Impact Statement/Feasibility> <Study/Update>	EA to install avgas (100LL) fuel farm (10,000 gallon tank) with credit card reader.	\$0	\$8,940	\$91,060	\$100,000
Airport Total:			\$0	\$156,450	\$1,593,550	\$1,750,000

Airport Projects - by Airport

Airport Name - County

FY	Project Component	Project Description	State Share	Local Share	Federal Share	Project Total
WICKENBURG MUNI - MARICOPA						
2014	Taxiways:Construct Taxiway - Capacity	Design for an expanded T-hangar development area including site preparation, drainage, utilities, and taxilanes (15,000 sy).	\$6,705	\$6,705	\$136,590	\$150,000
2014	APMS - Runway Pavement Preservation	Crack Seal and Rubberized Asphalt Emulsion Seal Coat RW523WK 10.	\$143,580	\$15,953	\$0	\$159,533
2014	APMS - Apron Pavement Preservation	Mill and Replace PFC A01WK 10.	\$448,736	\$49,859	\$0	\$498,595
2014	Ground Transportation:<Construct/Expand/Improve/Modify/Rehabilitate> Access Road - Capacity	The airport access road will be extended approx. 1,300 ft to the new mid-field apron. This will be the Ph. 2 portion of the project.	\$8,940	\$8,940	\$182,120	\$200,000
2014	Apron:Construct Apron - Environmental Mitigation	Design wash rack to help ensure that AC washing meets all of the state and federal environmental requirements.	\$1,173	\$1,174	\$23,903	\$26,250
2015	Apron:Construct Apron - Environmental Mitigation	Constr. of a wash rack that will help ensure that AC washing meets all of the state and federal environmental requirements.	\$7,822	\$7,823	\$159,355	\$175,000
2015	Taxiways:Construct Taxiway - Capacity	Constr. of an expanded T-hangar development area including site preparation, drainage, utilities, and taxilanes (15,000 sy).	\$67,050	\$67,050	\$1,365,900	\$1,500,000
2015	Runways:Install Runway <Vertical/Visual> Guidance System [PAPI/VASI/REIL/ALS/etc.] - Standards	Install ODALS to Rwy 23.	\$670	\$671	\$13,659	\$15,000
2016	Runways:Install Runway <Vertical/Visual> Guidance System [PAPI/VASI/REIL/ALS/etc.] - Standards	Install ODALS to Rwy 23.	\$4,470	\$4,470	\$91,060	\$100,000
2016	Runways:Install Runway Lighting (HIRL, MIRL, TDZ, LAHSO Or CL) - Standards	Design for the installation of LED MIRL/MITL (approx. 13,450 lf).	\$1,542	\$1,542	\$31,416	\$34,500
2017	Runways:Install Runway Lighting (HIRL, MIRL, TDZ, LAHSO Or CL) - Standards	Installation of LED MIRL/MITL (approx. 13,450 lf).	\$10,281	\$10,281	\$209,438	\$230,000
2018	Other:<Light/Mark/Remove> Obstructions - Standards	Removal of three hangars in the Rwy OFA.	\$3,129	\$3,129	\$63,742	\$70,000
Airport Total:			\$704,098	\$177,597	\$2,277,183	\$3,158,878
WINDOW ROCK - APACHE						
2014	Planning:Conduct <Environmental Assessment/Environmental Impact Statement/Feasibility> <Study/Update>	EA for the acquisition of 82 acres for RSA and parallel Twy.	\$0	\$20,920	\$213,080	\$234,000
2015	Land:Acquire <Land/Easement> For Development/Relocation	Acquire 82 acres for RSA and parallel Twy.	\$0	\$26,820	\$273,180	\$300,000
2016	Equipment:Acquire Security Equipment/Install Perimeter Fencing [Not Part 107] - Standards	Relocate perimeter fencing (18,000 lf) outside of the ROFA.	\$0	\$40,230	\$409,770	\$450,000
2017	Taxiways:Construct Taxiway - Capacity	Constr. Twy A (7,055 ft x 35 ft) (design/constr).	\$0	\$214,560	\$2,185,440	\$2,400,000
Airport Total:			\$0	\$302,530	\$3,081,470	\$3,384,000

Airport Projects - by Airport

Airport Name - County

FY	Project Component	Project Description	State Share	Local Share	Federal Share	Project Total
WINSLOW-LINDBERGH RGNL - NAVAJO						
2014	Taxiway, Rehabilitate	Design Twy B recon. (40 ft x 6,800 ft).	\$130,500	\$14,500	\$0	\$145,000
2014	Security Fencing - Chain Link, Install (New)	Design airport perimeter fence (38,200 lf).	\$90,000	\$10,000	\$0	\$100,000
2014	Runway, Rehabilitate	Design Rwy 11/29 recon., Ph. 1 (approx. 60,000 sy).	\$270,000	\$30,000	\$0	\$300,000
2014	Planning:Conduct <Environmental Assessment/Environmental Impact Statement/Feasibility> <Study/Update>	EA for land acquisitions: Parcel ID #103-09-003H (128 acres, State Land Department), 103-09-002H (3 acres); and for Rwy 4/22 pavement shift and levee relocation.	\$13,410	\$13,410	\$273,180	\$300,000
2015	Equipment:Acquire Security Equipment/Install Fencing [Required By Part 107] - Safety/Security	Constr. perimeter fencing on approach end of Rwy 11, Ph. 1 (6,300 lf).	\$7,822	\$7,823	\$159,355	\$175,000
2015	Taxiway, Rehabilitate	Recon. Twy B (40 ft x 6,800 ft).	\$1,170,000	\$130,000	\$0	\$1,300,000
2015	Runway Vertical/Visual Guidance System, Install/Upgrade	Install PAPI's for Rwy 4, 22 and 29.	\$135,000	\$15,000	\$0	\$150,000
2015	Runways:Rehabilitate Runway - Reconstruct	Recon. Rwy 11/29 , Ph. 1 (30,000 sy).	\$169,860	\$169,860	\$3,460,280	\$3,800,000
2016	Runways:Rehabilitate Runway - Reconstruct	Recon. Rwy 11/29, Ph. 2 (30,000 sy).	\$169,860	\$169,860	\$3,460,280	\$3,800,000
2016	Apron, Construct (New)	Design & constr. Twy A holding aprons (8,700 sy).	\$1,170,000	\$130,000	\$0	\$1,300,000
2017	Land:Acquire Land/Easement For Approaches	Acquire 128 Acres: Parcel ID #130-18-003H (State Land Department).	\$40,230	\$40,230	\$819,540	\$900,000
2017	Land:Acquire Land/Easement For Approaches	Acquire avigation easement (3 Acres): Parcel ID #103-09-002H.	\$3,263	\$3,263	\$66,474	\$73,000
2017	Obstructions, Light/Mark/Remove (Safety Areas)	Design levee relocation (5,000 lf) - Demolish and relocate Ruby wash diversion levee.	\$315,000	\$35,000	\$0	\$350,000
2018	Other:<Light/Mark/Remove> Obstructions [Hazard Only e.g., Approaches] - Safety/Security	Constr. levee relocation (5,000 lf) - Demolish and relocate Ruby wash diversion levee.	\$187,740	\$187,740	\$3,824,520	\$4,200,000
2018	Runway, Construct	Design Rwy 4/22 pavement shift to the southwest (1,800 lf).	\$225,000	\$25,000	\$0	\$250,000
2018	Guidance Signage, Install (New)	Design distance remaining signage on Rwy 4/22.	\$16,200	\$1,800	\$0	\$18,000
2018	Equipment:Acquire Security Equipment/Install Fencing [Required By Part 107] - Safety/Security	Constr. perimeter fencing on approach end of Rwy 4/22, Ph. 2 (28,800 lf).	\$18,774	\$18,774	\$382,452	\$420,000
Airport Total:			\$4,132,659	\$1,002,260	\$12,446,081	\$17,581,000
YUMA MCAS/YUMA INTL - YUMA						
2014	Apron:Construct Apron - Capacity	Constr. new concrete apron west of Twy H, 630 ft x 380 ft, approx. 26,600 sy.	\$165,390	\$165,390	\$3,369,220	\$3,700,000
2014	Apron, Rehabilitate	Design/constr. rehab. of partial DCC apron section south of Twy F that is 800 ft x 350 ft (30,000 sy).	\$1,800,000	\$200,000	\$0	\$2,000,000
2015	Taxiways:Extend Taxiway - Capacity	Constr. new concrete parallel Twy Y, 13,000 ft x 75 ft, for Rwy 21R/3L between Twy H and Rwy 8/26.	\$894,000	\$894,000	\$18,212,000	\$20,000,000
2015	Apron, Rehabilitate	Constr. 215 ft x 330 ft asphalt apron between GA hangar complex and Careflight (FBO) at the end of Fotruna Avenue. Approx. 1,200 lf of security fencing with gate and card reader needed.	\$900,000	\$100,000	\$0	\$1,000,000

Airport Projects - by Airport

Airport Name - County

<i>FY</i>	<i>Project Component</i>	<i>Project Description</i>	<i>State Share</i>	<i>Local Share</i>	<i>Federal Share</i>	<i>Project Total</i>
YUMA MCAS/YUMA INTL - YUMA						
2015	Taxiways:Install Taxiway Lighting (MITL) [Required By Part 139] - Safety/Security	Constr. 10,000 lf of new lighting on Twy F and Twy H. Install new electrical runs into main airport lighting system. Upgrade electrical vault and add emergency generator.	\$75,990	\$75,990	\$1,548,020	\$1,700,000
2016	Apron:Construct Apron - Capacity	Constr. concrete apron, west of Twy H, 870 ft x 380 ft, approx. 36,000 sy.	\$156,450	\$156,450	\$3,187,100	\$3,500,000
2017	Taxiways:Rehabilitate Taxiway - Reconstruct	Rehab. and/or replace approx. 30,000 sy of damaged concrete panels and joints on Twy H and F.	\$134,100	\$134,100	\$2,731,800	\$3,000,000
2018	Apron, Construct (New)	Design/constr. 150 ft expansion of the extg. apron east of FBO facilities and GA ramp between Twy Z2 and Z3, in addition to expanding 50 ft to the south on Twy Z2. Approx. 22,222 sy.	\$900,000	\$100,000	\$0	\$1,000,000
2018	Apron:Construct Apron - Standards	Rehab. 24,000 sy of concrete terminal apron and expand terminal apron by replacing 4,000 sy of adjoining asphalt with concrete.	\$111,750	\$111,750	\$2,276,500	\$2,500,000
Airport Total:			\$5,137,680	\$1,937,680	\$31,324,640	\$38,400,000
All Requested FSLs, All Funded SLs, APMS and State Projects:			\$168,135,968	\$76,268,715	\$935,234,452	\$1,179,639,135