



2015-2019 Final

Five-Year Transportation Facilities Construction Program

Airport Capital Improvement Program



Lake Havasu City 2014 Arizona Airport of the Year

Table of Contents

Airport Program Overview	3
Airport Program	
Arizona Airports Map.....	7
Abbreviations/Acronyms.....	9
Summary of Airport Program Dollars	11
Airport Projects by Airport	13

Various Helpful Web Links

Five-Year Transportation and Facilities Construction Program:
http://www.azdot.gov/MPD/priority_Programming/Five_Year_Programs.asp

Priority Planning Advisory Committee (PPAC):
http://www.azdot.gov/MPD/priority_Programming/PPAC/Index.asp

Aeronautics Home Page:
http://mpd.azdot.gov/mpd/airport_development/index.asp

Airport Development Programs:
http://mpd.azdot.gov/MPD/Airport_Development/airports/dev_plan.asp

This page is left intentionally blank.

Airport Program Overview

In conjunction with Arizona's public airports and the Federal Aviation Administration (FAA), ADOT develops the Five-Year Airport Capital Improvement Program (ACIP) to parallel the FAA's Airport Capital Improvement Program. The ACIP has the dual objective of maximizing the use of State dollars for airport development and maximizing FAA funding for Arizona airports. Federal monies are derived mainly from taxes on airline tickets and are distributed by the Federal Aviation Administration directly to local airports through the national Airport Improvement Program.

State funds come mainly from flight property tax, aircraft lieu tax, aircraft registration, and aviation fuel tax. The ACIP development process allocates money from the State Aviation Fund and distributes these funds across five major programs of airport development assistance. The State Transportation Board approves this distribution annually. The five programs are:

1) Federal/State/Local Grants

Projects utilizing federal, state and local funds include: design, construction, safety, security, capacity enhancement, equipment, maintenance, environmental, planning, and land acquisition. When a federal agency provides eligible grants directly to the airports, the State provides ½ of the local share of approved grants directly to the airports.

2) State/Local Grants

Projects utilizing state and local funds only include: design, construction, safety, security, capacity enhancement, environmental, planning and land acquisition. The State provides either 90% or 95% funding for prioritized approved grants directly to the airports.

3) Airport Pavement Management System (APMS)

Prioritized projects maintaining and protecting eligible aviation pavement surfaces are performed by the State. The State provides 100% of the design and construction administration for the project and 90% of the construction costs. The airports provide a local share of 10% of the construction costs and airport access through a joint project agreement.

4) Airport Loan Program

The State considers and awards loans to airports. These loans have typically included revenue generating projects like construction of new fuel farms, aircraft "T-hangars" and large aviation business hangars.

5) Statewide System Planning and Services

The State performs state-wide system studies and projects either with only state funds or with state and federal funds.

Airport Program Overview (continued)

In summary, 60 public airports submitted 709 project requests for consideration worth \$1.16 B over the five-year program period. These projects represent all Federal/State/Local and all State/Local funding desires on the part of the airport sponsors. The State develops the APMS program, the Airport Loan program, and the Statewide System Planning program.

The tentative ACIP programs a total of \$1.11 B over the five-year program period. This is an approximately 6.7% decrease from the previous year's program. This slight decrease is due to reduced project request totals for the 5 year program compared to the previous program.

State funding to match Federal/State/Local grants is proposed at \$22.5 M over the program period. This is an approximately consistent with the previous year's program. This five-year investment of State funds will support about \$503 M in Federal aid and require about \$22.5 M from airport sponsors. The following program lists show all requested federal/state/local grants submitted for this five-year program (approximately \$868.6 M in Federal aid was requested). Actual grant awards will be made by the federal agencies, with matching grants issued by the State upon approval.

The State's development over the five-year program is designed to provide half of a sponsor's share of a federally funded project. Expected sponsor obligations on most federal projects beginning with FY 2015 will be 8.94% of a projects total cost, making the state share 4.47%. Some federal grants have a local share of 5% or of 25%. For these projects, the State share would be 2.5% or 12.5% respectively. As airport sponsors receive a federal grant, they will apply to the state for the matching funds.

State funding for State/Local grants proposed at \$73.7 M, is 15% more than last year's total of \$64.1 M. This increase is due to increased revenue and assumed increase in availability of State funds. This investment of State funds will require about \$8.2 M from local airport sponsors. The following program lists only show those projects for State/Local funding that have met the State Transportation Board's qualifying priority rating.

The maximum total State grant funds to any one airport per fiscal year can not exceed 10% of the previous three year's average revenue into the State Aviation Fund. This maximum applies only to Federal/State/Local plus State/Local grant funds. For fiscal year 2015 the maximum grant funding is \$2.09 M per airport.

Airport Program Overview (continued)

The five-year ACIP also provides \$18 M for State funded Airport Loans. Up to \$3 M in Airport Loans may be issued in FY 2015. Loans are awarded on a first come, first serve basis as funding levels allow if approved by the STB upon recommendation from the Loan Committee.

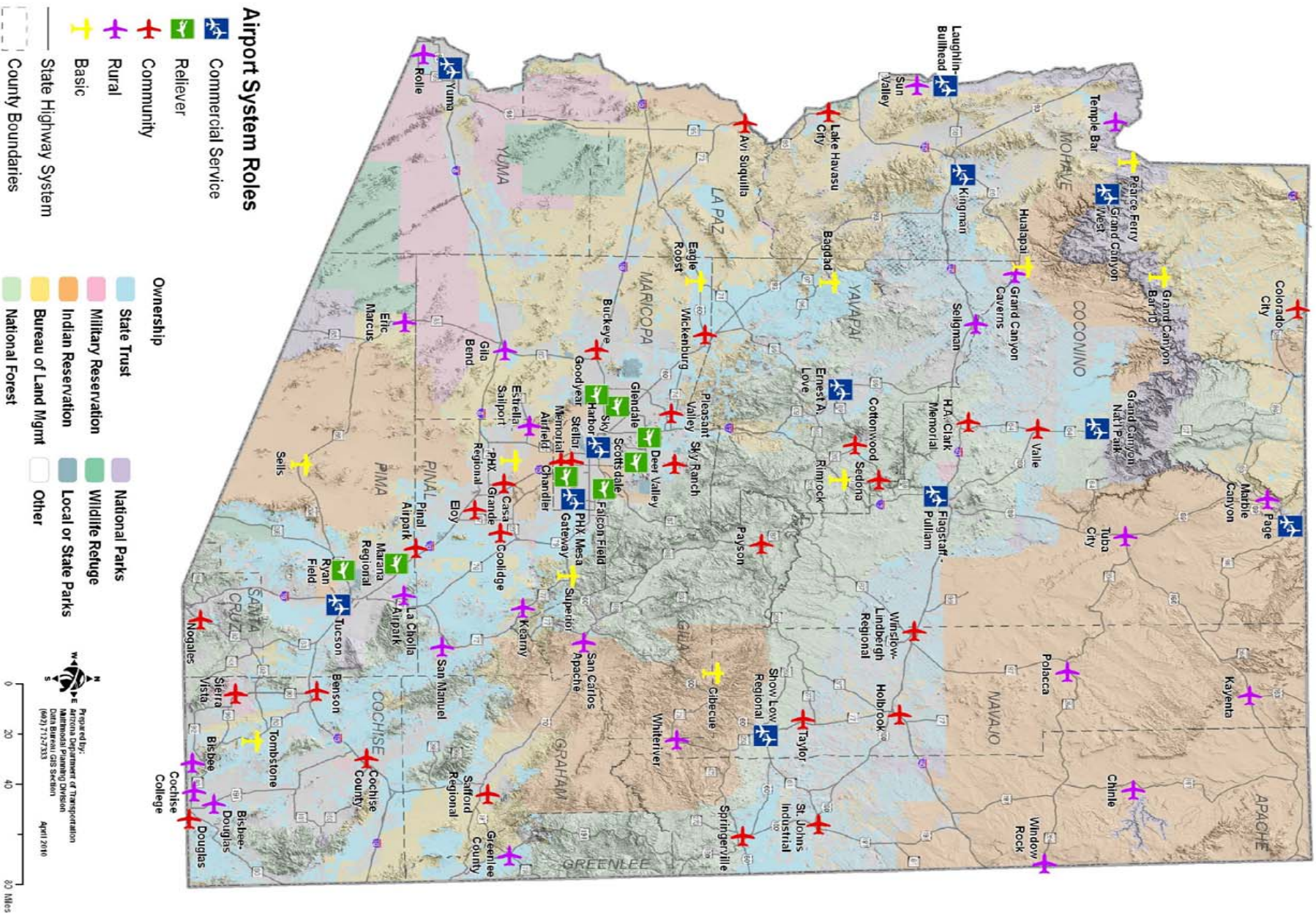
In addition to State grants and loans, ADOT supplements airport pavement maintenance statewide. The five-year ACIP provides \$34.0 M for statewide airport pavement maintenance. In 2015, \$7.0 M will be invested in Airport Pavement Management System (APMS) projects at public airports.

Statewide System Planning and Services are managed by ADOT and funded by both Federal and State monies. In 2015, \$2.0 M will be invested in statewide planning studies and services to benefit Arizona airports. The five-year ACIP proposes \$10 M for statewide planning studies and services to benefit Arizona airports.

The document includes a map showing the Arizona Airports included in the State Airport System Plan. Not all airports shown are eligible for project funding. Not all eligible airports have requested project funding in this plan.

This page is left intentionally blank.

Arizona Airports Map



This page is left intentionally blank.

2015-2019 ACIP Abbreviations/Acronyms

A/C	Advisory Circular (FAA)	INTL	International
AC	Aircraft	lf	Linear Feet
ACP	Asphalt Cement Pavement	LPV	Lateral Precision with Vertical guidance
ADG	Aircraft Design Group	MALSR	Medium-Intensity Approach Lighting System with Runway Alignment Indicator Lights
ALP	Airport Layout Plan		
AOA	Airport Operations Area	MAP	Military Airport Program
approx.	Approximately	MIRL	Medium Intensity Runway Lights
apron	Aircraft Parking Area	MITL	Medium Intensity Taxiway Lights
APMS	Airport Pavement Management System	MUNI	Municipal
APN	Assessor's Parcel Number	NAVAID	Navigational Aid
ARC	Airport Reference Code	NEPA	National Environmental Policy Act
ARFF	Aircraft Rescue and Fire Fighting	NOTAM	Notice to Airmen
ASLD	Arizona State Land Department	OFA	Object Free Area
ASOS	Automatic Surface Observation System	ops.	Operations
ASR	Airport Surveillance Radar	PAPI	Precision Approach Path Indicator
ATCT	Air Traffic Control Tower	Pave Pres	Pavement Preservation
AWOS	Automated Weather Observation System	PCC	Portland Cement Concrete
BLM	Bureau of Land Management	PCI	Pavement Condition Index
BRL	Building Restriction Line	PFC	Porous Friction Course
CatEx	Categorical Exclusion	Ph. 1	Phase 1 of a Multi-year Construction Project
CERT	Certification	Ph. 2	Phase 2 of a Multi-year Construction Project
constr.	Construct or Construction	rehab.	Rehabilitate or Rehabilitation
DCC	Defense Contractor Cargo	recon.	Reconstruct or Reconstruction
DNL or LDN	Day/Night Equivalent Sound Level	REIL	Runway End Identifier Lights
DWL	Dual Wheel Load	RGL	Runway Guard Light
EA	Environmental Assessment	ROD	Record of Decision
EIS	Environmental Impact Statement	ROFA	Runway Obstacle Free Area
EMAS	Engineered Materials Arresting System	RSA	Runway Safety Area
extg.	Existing	RSAT	Runway Safety Action Team
FAA	Federal Aviation Administration	RPZ	Runway Protection Zone
FBO	Fixed Base Operator	RVZ	Runway Visibility Zone
FOD	Foreign Object Debris	Rwy	Runway
FAR	Federal Aviation Regulation	SASP	State Airports System Plan
FEMA	Federal Emergency Management Agency	sf	Square Feet
ft	Feet	SRE	Snow Removal Equipment
GA	General Aviation	sy	Square Yards
GPS	Global Positioning System	TLOF	Touchdown and Liftoff Area
HIRL	High Intensity Runway Lights	TSA	Transportation Security Administration
HS	High Speed	Twy	Taxiway
ID	Identification	USFS	United States Forest Service
ILS	Instrument Landing System	VALE	Voluntary Airport Low Emission

This page is left intentionally blank.

Summary of Airport Program Dollars

	State Share	Local Share	Federal Share	Project Totals
FY 2015 Fed/State/Local	\$8,180,353	\$8,180,357	\$129,494,467	\$145,855,177
FY 2015 State/Local Total	\$16,143,025	\$3,471,225		\$19,614,250
FY 2015 APMS Totals	\$7,012,485	\$723,609		\$7,736,094
FY 2015 State Totals	\$2,000,000	\$0		\$2,000,000
FY 2015 Project Totals	\$33,335,863	\$12,375,191	\$129,494,467	\$175,205,521
FY 2016 Fed/State/Local	\$8,612,636	\$8,612,640	\$134,695,679	\$151,920,955
FY 2016 State/Local Total	\$16,196,020	\$1,799,558		\$17,995,578
FY 2016 APMS Totals	\$8,008,861	\$834,317		\$8,843,178
FY 2016 State Totals	\$2,000,000	\$0		\$2,000,000
FY 2016 Project Totals	\$34,817,517	\$11,246,515	\$134,695,679	\$180,759,711
FY 2017 Fed/State/Local	\$10,777,455	\$10,777,407	\$163,819,951	\$185,374,813
FY 2017 State/Local Total	\$16,174,329	\$1,797,148		\$17,971,477
FY 2017 APMS Totals	\$9,016,707	\$946,304		\$9,963,010
FY 2017 State Totals	\$2,000,000	\$0		\$2,000,000
FY 2017 Project Totals	\$37,968,491	\$13,520,858	\$163,819,951	\$215,309,300
FY 2018 Fed/State/Local	\$9,179,353	\$9,179,356	\$151,927,252	\$170,285,961
FY 2018 State/Local Total	\$14,181,727	\$1,575,747		\$15,757,474
FY 2018 APMS Totals	\$5,210,790	\$523,422		\$5,734,211
FY 2018 State Totals	\$2,000,000	\$0		\$2,000,000
FY 2018 Project Totals	\$30,571,869	\$11,278,525	\$151,927,252	\$193,777,646
FY 2019 Fed/State/Local	\$16,104,614	\$16,104,612	\$288,655,598	\$320,864,824
FY 2019 State/Local Total	\$11,037,800	\$1,604,200		\$12,642,000
FY 2019 APMS Totals	\$5,000,000	\$500,000		\$5,500,000
FY 2019 State Totals	\$2,000,000	\$0		\$2,000,000
FY 2019 Project Totals	\$34,142,414	\$18,208,812	\$288,655,598	\$341,006,824
Total 5-Year Funded Program	\$170,836,154	\$66,629,901	\$868,592,947	\$1,106,059,002

This page is left intentionally blank.

Airport Projects - by Airport

Airport Name - County

FY	Project Component	Project Description	State Share	Local Share	Federal Share	Project Total
AERONAUTICS - MARICOPA						
2015	Master Plans	System Planning and Services	\$2,000,000	\$0	\$0	\$2,000,000
2015	APMS - Runway Pavement Preservation	APMS Annual Design Services	\$500,000	\$0	\$0	\$500,000
2016	Master Plans	System Planning and Services	\$2,000,000	\$0	\$0	\$2,000,000
2016	APMS - Runway Pavement Preservation	APMS Annual Design Services	\$500,000	\$0	\$0	\$500,000
2017	Master Plans	System Planning and Services	\$2,000,000	\$0	\$0	\$2,000,000
2017	APMS - Runway Pavement Preservation	APMS Annual Design Services	\$500,000	\$0	\$0	\$500,000
2018	Master Plans	System Planning and Services	\$2,000,000	\$0	\$0	\$2,000,000
2018	APMS - Runway Pavement Preservation	APMS Annual Design Services	\$500,000	\$0	\$0	\$500,000
2019	Master Plans	System Planning and Services	\$2,000,000	\$0	\$0	\$2,000,000
2019	APMS - Runway Pavement Preservation	APMS Construction - New Study will identify specific projects and airports.	\$4,500,000	\$500,000	\$0	\$5,000,000
2019	APMS - Runway Pavement Preservation	APMS Annual Design Services	\$500,000	\$0	\$0	\$500,000
Airport Total:			\$17,000,000	\$500,000	\$0	\$17,500,000

AVI SUQUILLA - LA PAZ

2015	Planning:Conduct <Environmental Assessment/Environmental Impact Statement/Feasibility> <Study/Update>	EA for short term (1-5yr) Master Plan Update projects including GA Apron/Terminal area drainage, utility relocation/extension and road/parking rehab.; Extend GA Apron; Constr. Twy C, Apron Taxilanes, Cargo Apron and AC Storage Pads.	\$8,940	\$8,940	\$182,120	\$200,000
2016	Other:<Construct/Improve/Repair> <Fuel Farm/Utilities> [MAP] - Other	Constr. spill containment for delivery and CRIT Fueling Trucks, security fencing and lighting at fuel farm in accordance with SWPPP developed as part of Master Plan Update	\$13,410	\$13,410	\$273,180	\$300,000
2017	Other:Improve Airport <Drainage/Erosion Control/Miscellaneous Improvements> - Standards	Design GA Terminal/Apron area drainage, relocate/install storm drainage, 5,000 lf of Fire Protection water line, sanitary sewer main, and electrical/telephone facilities; rehab. 8,000 sy Access Road and 11,000 sy Public Parking.	\$8,940	\$8,940	\$182,120	\$200,000
2018	Other:Improve Airport <Drainage/Erosion Control/Miscellaneous Improvements> - Standards	Constr. GA Terminal/Apron area drainage, relocate/install storm drainage, 5,000 lf of Fire Protection water line, sanitary sewer main, and electrical/telephone public facilities; rehab. 8,000 sy Access Road and 11,000 sy Public Parking.	\$111,750	\$111,750	\$2,276,500	\$2,500,000
2019	Taxiways:<Extend/Widen/Strengthen> Taxiway - Standards	Completion of Rwy 1-19 parallel twy approx. 4,800 ft x 35 ft including MITL and guidance signs required to meet FAA standards. Exit Twy A2 to be reconfigured and two exit Twys to be added for capacity.	\$111,750	\$111,750	\$2,276,500	\$2,500,000
2019	Apron:Expand/Strengthen Apron - Standards	Expand GA Apron North to Twy A1 and East to Twy A (78,500 sy) for itinerant AC and helicopter parking, including storm drainage improvements.	\$140,805	\$140,805	\$2,868,390	\$3,150,000
2019	Apron:Expand Apron - Capacity	Extend 3 taxilanes approx. 400 ft x 75 ft each for T-Hangar or corporate hangar development.	\$28,608	\$28,608	\$582,784	\$640,000

Airport Projects - by Airport

Airport Name - County
FY Project Component

Project Description

State Share

Local Share

Federal Share

Project Total

AVI SUQUILLA - LA PAZ

Airport Total: \$424,203 \$424,203 \$8,641,594 \$9,490,000

BAGDAD - YAVAPAI

2015	Terminal, Construct/Expand	Design & constr. restrooms/terminal building (approx. 1,000 sf).	\$380,000	\$20,000	\$0	\$400,000
2016	APMS - Runway Pavement Preservation	Crack Seal and Rubberized Bagdad Airport Asphalt Emulsion Seal Coat RW523BG 10	\$97,899	\$10,878	\$0	\$108,777
2016	APMS - Taxiway Pavement Preservation	Crack Seal and Rubberized Asphalt Emulsion Seal Coat TWABG 10	\$2,867	\$319	\$0	\$3,186
2016	APMS - Apron Pavement Preservation	Crack Seal and Rubberized Asphalt Emulsion Seal Coat A01BG 10	\$17,821	\$1,980	\$0	\$19,801
2016	Runways:<Extend/Widen/Strengthen> Runway [To Meet Standards] - Standards	Design & Constr. Partial Rwy Recon. (approx. 10,000 sy)	\$22,350	\$22,350	\$455,300	\$500,000
2017	Taxiways:Construct Taxiway - Capacity	Design & Constr. Parallel Twy (4,575 ft x 25 ft)	\$42,465	\$42,465	\$865,070	\$950,000
Airport Total:			\$563,402	\$97,992	\$1,320,370	\$1,981,764

BENSON MUNI - COCHISE

2015	Other:<Install/Rehabilitate> Airport Beacons [Required By Part 139] - Safety/Security	Upgrade Airport Beacon	\$3,352	\$3,353	\$68,295	\$75,000
2015	Runways:Install Runway <Vertical/Visual> Guidance System [PAPI/VASI/REIL/ALS/etc.] - Standards	Upgrade REILs	\$4,470	\$4,470	\$91,060	\$100,000
2015	Runway, Extend	Complete EA for land acquisition for extension of Rwy 10.	\$67,500	\$7,500	\$0	\$75,000
2016	APMS - Taxiway Pavement Preservation	Crack Seal and Rubberized Asphalt Emulsion Seal Coat TWABN 10	\$74,433	\$8,270	\$0	\$82,703
2016	Heliport, Construct	Constr. helicopter parking pad(s) 75 ft x 75 ft adjacent to east Apron.	\$112,500	\$12,500	\$0	\$125,000
2016	Land:Acquire <Land/Easement> For Development/Relocation	Acquire Land (Parcel 208-21 approx. 32 acres) to provide for approaches/extension of Rwy 10/Twy.	\$11,175	\$11,175	\$227,650	\$250,000
2016	APMS - Apron Pavement Preservation	Crack Seal and Rubberized Asphalt Emulsion Seal Coat A01BN 20	\$37,780	\$4,198	\$0	\$41,978
2016	Airport Drainage Plan	Conduct Airport Drainage Study relative to development and Rwy/Twy Extension.	\$135,000	\$15,000	\$0	\$150,000
2016	APMS - Taxiway Pavement Preservation	Crack Seal and Rubberized Asphalt Emulsion Seal Coat TH01BN 10	\$26,713	\$2,968	\$0	\$29,681
2017	Wildlife Deterrent Fencing, Install (New)	Design Perimeter Fence extension (approx. 4,200 ft).	\$45,000	\$5,000	\$0	\$50,000
2017	Runway, Extend	Design Rwy 10/Txwy extension (approx. 1,400 lf).	\$157,500	\$17,500	\$0	\$175,000
2018	Runways:Construct Runway [Includes Relocation] - Standards	Constr. Rwy/Twy Extension (Rwy 10 approx. 1,400 lf)	\$78,225	\$78,225	\$1,593,550	\$1,750,000

Airport Projects - by Airport

Airport Name - County

FY	Project Component	Project Description	State Share	Local Share	Federal Share	Project Total
BENSON MUNI - COCHISE						
2018	Taxiways:<Extend/Widen/Strengthen> Taxiway - Standards	Constr. connector Twy (35 ft x 125 ft) and Taxilane (35 ft x 50 ft) to Rwy 10 and T-Hangar Pads.	\$11,175	\$11,175	\$227,650	\$250,000
2018	Ground Transportation:<Construct/Expand/Improve/Modify/Rehabilitate> Service Road - Other	Constr. Airport Perimeter (Service) Road (approx. 20,000 lf) on extg. airport property.	\$33,525	\$33,525	\$682,950	\$750,000
2018	Equipment:Acquire Security Equipment/Install Perimeter Fencing [Not Part 107] - Standards	Install airport perimeter/wildlife fence and gates (approx. 20,000 lf).	\$33,525	\$33,525	\$682,950	\$750,000
2019	Planning:<Conduct/Update> <Airport Master Plan Study {ALP, EA, etc.}>	Update Master Plan	\$7,822	\$7,823	\$159,355	\$175,000
Airport Total:			\$839,695	\$256,207	\$3,733,460	\$4,829,362
BISBEE DOUGLAS INTL - COCHISE						
2015	Equipment:Acquire Equipment (e.g., Sweepers, etc.) - Standards	Acquire safety equipment/sweeper.	\$5,364	\$5,364	\$109,272	\$120,000
2017	Taxiways:Rehabilitate Taxiway - Reconstruct	Reconstruct Twy A, Phase 1, (A2 to A3 approximately 1,100 ft x 35 ft).	\$16,986	\$16,986	\$346,028	\$380,000
2017	Taxiway, Rehabilitate	Reconstruct Twy A, Phase 1, (A2 to A3 approximately 1,100 ft x 35 ft).	\$630,000	\$70,000	\$0	\$700,000
2018	APMS - Runway Pavement Preservation	Crack Seal and Rubberized Asphalt Emulsion Seal Coat RW1735BD 10	\$231,703	\$25,745	\$0	\$257,448
2018	Runway MIRL/HIRL, Install	Replace Rwy 17/35 edge lighting, signage, and vault.	\$450,000	\$50,000	\$0	\$500,000
2019	Runways:Rehabilitate Runway - Reconstruct	Reconstruct Twy A, Phase 2, Twy A3 to A4 (approximately 1,300 ft x 35 ft).	\$13,410	\$13,410	\$273,180	\$300,000
2019	Taxiway, Rehabilitate	Reconstruct Twy A, Phase 2, Twy A3 to A4 (approximately 1,300 ft x 35 ft).	\$720,000	\$80,000	\$0	\$800,000
Airport Total:			\$2,067,463	\$261,505	\$728,480	\$3,057,448
BISBEE MUNI - COCHISE						
2016	APMS - Apron Pavement Preservation	Thin Asphalt Overlay/PFC A01BM 10	\$135,352	\$15,039	\$0	\$150,391
2016	Runways:Install Runway <Vertical/Visual> Guidance System [PAPI/VASI/REIL/ALS/etc.] - Standards	Install PAPI's on Rwy 17/35 (construct only).	\$8,940	\$8,940	\$182,120	\$200,000
2017	Taxiways:Construct Taxiway [Includes Relocation]	Relocate Twy A (5,900 ft x 25 ft) to 225 ft from Rwy centerline (construct only). Phase 1 approximately 2,050 ft from A-1 to A-3.	\$40,230	\$40,230	\$819,540	\$900,000
2019	Taxiways:Construct Taxiway [Includes Relocation]	Relocate Twy A (5,900 ft x 25 ft) to 225 ft from Rwy centerline (construct only). Phase 2. approximately 3,850 feet from Twy A3 to Twy A6.	\$13,410	\$13,410	\$273,180	\$300,000
Airport Total:			\$197,932	\$77,619	\$1,274,840	\$1,550,391

Airport Projects - by Airport

Airport Name - County

FY	Project Component	Project Description	State Share	Local Share	Federal Share	Project Total
BUCKEYE MUNI - MARICOPA						
2015	Land For Protection (Safety Areas), Acquire	Land acquisition (approx. 74 acres; includes a portion of one or more of the following parcels: 504-15-130D, 504-15-029J, and 504-15-029K).	\$1,800,000	\$200,000	\$0	\$2,000,000
2016	Taxiways:Construct Taxiway - Capacity	Design Twy including Fire Suppression Waterline (Twy is approx. 1,600 ft x 35 ft, and approx. 10,000 ft of waterline).	\$7,822	\$7,823	\$159,355	\$175,000
2017	APMS - Taxiway Pavement Preservation	Thin Asphalt Overlay/PFC TWABK 10	\$543,442	\$60,383	\$0	\$603,825
2017	Taxiways:Construct Taxiway - Capacity	Constr. Twy including Fire Suppression Waterline (Twy is approx. 1,600 ft x 35 ft, and approx. 10,000 ft of waterline).	\$254,790	\$254,790	\$5,190,420	\$5,700,000
2017	APMS - Apron Pavement Preservation	Thin Asphalt Overlay/PFC A01BK 10	\$161,862	\$17,985	\$0	\$179,847
2017	APMS - Apron Pavement Preservation	Crack Seal and Rubberized Asphalt Emulsion Seal Coat A01BK 20	\$45,348	\$5,039	\$0	\$50,387
2018	Equipment:Acquire Security Equipment/Install Perimeter Fencing [Not Part 107] - Standards	Constr. RSAT Projects - Access Control (automate extg. gates, install card readers and install security cameras at the gates)	\$20,115	\$20,115	\$409,770	\$450,000
2019	Taxiways:Install Taxiway Lighting (e.g., SMGCS, Reflectors, MITL) - Standards	Constr. RSAT Projects - Airfield Lighting and Signage. Replace stake-mounted twy edge lights and modify guidance signs to reflect new twy naming convention (approx. 46 guidance signs and 11,000 LF taxiway edge lighting).	\$37,995	\$37,995	\$774,010	\$850,000
Airport Total:			\$2,871,374	\$604,130	\$6,533,555	\$10,009,059

CASA GRANDE MUNI - PINAL

2015	Land:Acquire Land/Easement For Approaches	Complete an EA on 55 acres of land required for planned Rwy Displacement; Drainage Ditch Relocation (13-AIR-3002).	\$1,118	\$1,117	\$22,765	\$25,000
2015	Other:<Construct/Rehabilitate> Parking Lot [Non Revenue Producing-Non Hub/MAP] - Other	Expand Terminal Area Parking Lot (6,660 sy (150 ft x 400 ft), relocate 500 ft of security fencing and utilities (200 ft water/electric and one fire hydrant) (12-AIR-2904).	\$22,350	\$22,350	\$455,300	\$500,000
2015	Heliport:<Construct/Expand/Improve/Modify/Rehabilitate> Helipad/Heliport - Standards	Design/Constr. Helicopter Apron and Vehicle Access/Parking (10,000 sy) and Utilities (12-AIR-2908).	\$7,152	\$7,152	\$145,696	\$160,000
2015	Planning:<Conduct/Update> <Airport Master Plan Study {ALP, EA, etc.}>	The extg. MPU was adopted by council in 2009 will be updated. The ALP will be revised to reflect changes in the location of hangars, new infrastructure, and proposed changes to ops. Areas.	\$6,705	\$6,705	\$136,590	\$150,000
2016	Planning:Conduct <Environmental Assessment/Environmental Impact Statement/Feasibility> <Study/Update>	Conduct EA on property that will need to be purchased in order to extend RWY 05/23, TWYB, ILS and MALSR.	\$1,564	\$1,565	\$31,871	\$35,000
2016	Apron:Construct Apron - Standards	Relocate (80 ft x 4,000 ft) Drainage Ditch running from NE to SW portions of airport.	\$3,218	\$3,219	\$65,563	\$72,000

Airport Projects - by Airport

Airport Name - County

FY	Project Component	Project Description	State Share	Local Share	Federal Share	Project Total
CASA GRANDE MUNI - PINAL						
2016	Apron:Construct Apron - Capacity	Design/Constr. 11,500 sy apron to 72,000 DWL, expansion of SW Apron (12-AIR-2896)	\$38,442	\$38,442	\$783,116	\$860,000
2016	Land:Acquire Land/Easement For Approaches	Purchase approx. 55 acres required for planned Rwy displacement/shift.	\$45,058	\$45,057	\$917,885	\$1,008,000
2016	Apron:Construct Apron - Standards	Design 1,300 x 100 ft Displacement/shift of Rwy 23 Threshold & Associated Rwy/Twy lighting/markings (13-AIR-1615).	\$2,012	\$2,011	\$40,977	\$45,000
2016	Other:Environmental Mitigation	Design/Constr. AC Wash Rack (70 ft x 70 ft) within West Apron area	\$14,304	\$14,304	\$291,392	\$320,000
2017	Other:Improve Airport <Drainage/Erosion Control/Miscellaneous Improvements> - Standards	Relocate (80 ft x 4,000 ft) Drainage Ditch running from NE to SW portions of airport.	\$32,184	\$32,184	\$655,632	\$720,000
2017	Apron:Construct Apron - Standards	Construct 1,300 ft x 100 ft Displacement/shift of Rwy 23 Threshold & Associated Rwy/Twy lighting/markings (13-AIR-1615).	\$20,115	\$20,115	\$409,770	\$450,000
2017	Land:Acquire Land/Easement For Approaches	Purchase approx. 150 acres required for planned Rwy Extension; parallel Twy constr.; Drainage Ditch & ILS Relocation (13-AIR-3002). [Due to large number, Parcel Numbers are included in separate document].	\$122,925	\$122,925	\$2,504,150	\$2,750,000
2018	Other:Improve Airport <Drainage/Erosion Control/Miscellaneous Improvements> - Standards	Relocate (80 ft x 15,000 ft) Drainage Ditch running from NE to SW portion of airport	\$80,460	\$80,460	\$1,639,080	\$1,800,000
2018	Ground Transportation:<Construct/Expand/Improve/Modify/Rehabilitate> Access Road - Capacity	Design/Constr.(19,100 ft x 12 ft) Perimeter Service Road (approx.14,000 ft) Security Fence (13-AIR-2912).	\$62,982	\$62,983	\$1,283,035	\$1,409,000
2018	Runways:Rehabilitate Runway - Reconstruct	Design/Constr./Rehab. of old portion of Rwy 5/23 (5,280 ft x 100 ft) and Terminal Apron (11,620 sy) (15-AIR-2931).	\$44,700	\$44,700	\$910,600	\$1,000,000
2019	Taxiways:Extend Taxiway - Capacity	Design/Constr./Relocate (3,850 ft x 35 ft) Twy B & connecting Twys @74,000 DWL (13-AIR-2895). Twy B is listed as Twy A on ADOT APMS.	\$179,202	\$179,203	\$3,650,595	\$4,009,000
2019	Runways:Extend Runway- Capacity	Design/Constr. 3,850 ft x 100 ft @ 74,000 lbs DWL Rwy extension to SW (13-AIR-1612).	\$268,200	\$268,200	\$5,463,600	\$6,000,000
Airport Total:			\$952,691	\$952,692	\$19,407,617	\$21,313,000
CHANDLER MUNI - MARICOPA						
2015	Planning:Conduct <Environmental Assessment/Environmental Impact Statement/Feasibility> <Study/Update>	EA for planned storm drain management.	\$3,442	\$3,442	\$70,116	\$77,000
2015	APMS - Runway Pavement Preservation	Thin Asphalt Overlay/PFC RW4L22RCH 10	\$392,756	\$43,639	\$0	\$436,395
2015	APMS - Taxiway Pavement Preservation	Thin Asphalt Overlay/PFC TWACH 10	\$755,390	\$83,932	\$0	\$839,322
2015	Runway Vertical/Visual Guidance System, Install/Upgrade	Design/Constr. approx. 75 Airport Guidance Signs and Rwy 4R/22L; PAPI Replacement	\$703,800	\$78,200	\$0	\$782,000

Airport Projects - by Airport

Airport Name - County

FY	Project Component	Project Description	State Share	Local Share	Federal Share	Project Total
CHANDLER MUNI - MARICOPA						
2015	Other:Improve Airport <Drainage/Erosion Control/Miscellaneous Improvements> - Standards	Design & Constr. Storm Water Management in Areas 1 and 3	\$87,634	\$87,635	\$1,785,231	\$1,960,500
2016	Airport Drainage, Improve	Design Drainage/Grading Improvements in RSA and TSA	\$141,750	\$15,750	\$0	\$157,500
2016	Other:Install Miscellaneous <NAVAIDS/Approach Aids> - Standards	Replace Federal Contract Tower (Will replace six receivers and 5 transmitters currently operating in ATCT and add one 800mhz 16 channel transceiver)	\$20,473	\$20,472	\$417,055	\$458,000
2017	Planning:Conduct <Environmental Assessment/Environmental Impact Statement/Feasibility> <Study/Update>	EA for planned Twy B extension from extg. Twy N to approach end of Rwy 4L including connectors	\$12,471	\$12,472	\$254,057	\$279,000
2017	Other:Improve Airport <Drainage/Erosion Control/Miscellaneous Improvements> - Standards	Constr. Storm Water Management in Airport RSA and TSA	\$86,316	\$86,315	\$1,758,369	\$1,931,000
2017	Airport Drainage, Improve	Design & Constr. Storm Water Management in Areas 4 and 7	\$273,600	\$30,400	\$0	\$304,000
2017	Apron, Rehabilitate	Rehab. North Terminal Apron Ph. 2 (47,600 sy)	\$1,254,600	\$139,400	\$0	\$1,394,000
2018	Taxiways:Extend Taxiway - Capacity	Design: Twy B extension from Twy N to Twy D 5,500 ft x 40 ft (approx. 24,500 sy); includes Twy lights, signs and grading	\$19,199	\$19,198	\$391,103	\$429,500
2018	Apron:Construct Apron - Capacity	Constr. Ph. 2b of N Apron Ph. 2 - approx. 540 ft x 275 ft apron area (16,450 sy)	\$142,325	\$142,325	\$2,899,350	\$3,184,000
2018	APMS - Taxiway Pavement Preservation	Thin Asphalt Overlay/PFC TWCCCH 10	\$394,124	\$43,792	\$0	\$437,916
2018	APMS - Taxiway Pavement Preservation	Thin Asphalt Overlay/PFC TWACH 10	\$849,712	\$94,412	\$0	\$944,124
2019	Ground Transportation:<Construct/Expand/Improve/Modify/Rehabilitate> Access Road - Capacity	Design 3,150 lf of two-lane roadway (This project designs any roads still needed).	\$9,521	\$9,521	\$193,958	\$213,000
2019	Taxiways:Construct Taxiway - Capacity	Constr. Ph. 1 MITL & Signs for approx. 2,800 lf of Twy B and connectors.	\$55,719	\$55,718	\$1,135,063	\$1,246,500
2019	Taxiways:Construct Taxiway - Capacity	Constr. Ph. 1 pavement for 2,800 ft x 40 ft Twy, connectors & runup areas (17,000 sy).	\$72,369	\$72,370	\$1,474,261	\$1,619,000
Airport Total:			\$5,275,201	\$1,038,993	\$10,378,563	\$16,692,757
CHINLE MUNI - APACHE						
2016	Runway, Rehabilitate	Reconstruct Rwy 18/36 (6,900 ft x 60 ft).	\$1,980,000	\$220,000	\$0	\$2,200,000
2016	Runways:Rehabilitate Runway - Reconstruct	Reconstruct Rwy 18/36 (6,900 ft x 60 ft).	\$44,700	\$44,700	\$910,600	\$1,000,000
2017	Runway MIRL/HIRL, Install	Replace Rwy 18/36 edge lights and PAPIs.	\$432,000	\$48,000	\$0	\$480,000
2019	Buildings:<Construct/Expand/Imp/Modify/Rehabilitate> <Snow Removal Equipment/Chemical Storage Building/etc.> - Standards	Construct an SRE building (40 ft. x 50 ft.).	\$15,645	\$15,645	\$318,710	\$350,000
Airport Total:			\$2,472,345	\$328,345	\$1,229,310	\$4,030,000

Airport Projects - by Airport

Airport Name - County

FY	Project Component	Project Description	State Share	Local Share	Federal Share	Project Total
CIBECUE - NAVAJO						
2015	Planning:Conduct <Environmental Assessment/Environmental Impact Statement/Feasibility> <Study/Update>	Update EA for new airport.	\$10,057	\$10,058	\$204,885	\$225,000
2016	Runways:Construct Runway [Includes Relocation] - Standards	Construct Rwy 1/19 (5,100 ft x 75 ft) including bypass Twy (840 ft x 35 ft), connector Twy (300 ft x 35 ft), Apron (15,584 sy) and access road (5,460 ft x 25 ft) - Phase 1 grading and drainage (construct only).	\$303,960	\$303,960	\$6,192,080	\$6,800,000
2017	Runways:Construct Runway [Includes Relocation] - Standards	Construct Rwy (5,100 ft x 75 ft) including bypass Twy (840 ft x 35 ft), connector Twy (300 ft x 35 ft), apron (15,584 sy) and access road (5,460 ft x 25 ft) - Phase 2 paving (construct only).	\$156,685	\$156,685	\$3,232,630	\$3,546,000
2018	Runways:Install Runway Lighting (HIRL, MIRL, TDZ, LAHSO Or CL) - Standards	Install Rwy 1/19 edge lighting and visual aids including utilities - Phase 3 lighting (construct only).	\$26,820	\$26,820	\$546,360	\$600,000
Airport Total:			\$497,522	\$497,523	\$10,175,955	\$11,171,000
COCHISE COLLEGE - COCHISE						
2017	Security Fencing - Chain Link, Install (New)	Install chain link fencing and gates (19,500 lf).	\$540,000	\$60,000	\$0	\$600,000
2019	Taxiway, Construct (New)	Install new connector twy between existing A1 and A2.	\$450,000	\$50,000	\$0	\$500,000
Airport Total:			\$990,000	\$110,000	\$0	\$1,100,000
COCHISE COUNTY - COCHISE						
2016	Rotating Beacon, Rehabilitate	Install rotating beacon on tip down tower; install edge lighting and signage for Twy A north.	\$225,000	\$25,000	\$0	\$250,000
2017	Apron, Rehabilitate	Rehabilitate apron section 20 (18,300 sy) and section 10 (2,600 sy).	\$382,500	\$42,500	\$0	\$425,000
2017	Apron:Rehabilitate Apron - Reconstruction	Rehabilitate Apron Section 20 (18,300 sy) and section 10 (2,600 sy).	\$22,350	\$22,350	\$455,300	\$500,000
2019	Buildings:<Construct/Expand/Imp/Modify/Rehabilitate> <Snow Removal Equipment/Chemical Storage Building/etc.> - Standards	Design/Construct modular hangar (5,000 sf).	\$11,175	\$11,175	\$227,650	\$250,000
Airport Total:			\$641,025	\$101,025	\$682,950	\$1,425,000
COLORADO CITY MUNI - MOHAVE						
2015	Planning:Conduct <Environmental Assessment/Environmental Impact Statement/Feasibility> <Study/Update>	EA to acquire approx. 180 acres of BLM land around the Rwy's including Parcel 7: 404-44-005, 25.4 acres; Parcel 8: 404-27-044, 146.9 acres; Parcel 11: 404-44-004, .80 acres; and Parcel 12: 404-44-003, 4.7 acres.	\$12,292	\$12,293	\$250,415	\$275,000
2016	Taxiways:Rehabilitate Taxiway - Reconstruct	Crack seal, fog seal, and remark Twy A (820 ft x 35 ft) and B (2,766 ft x 35 ft) and connecting Twys (2: 245 ft x 35 ft, 3: 191 ft x 35 ft, and 1: 191 ft x 103 ft) (Design & Constr.).	\$6,034	\$6,035	\$122,931	\$135,000

Airport Projects - by Airport

Airport Name - County

FY	Project Component	Project Description	State Share	Local Share	Federal Share	Project Total
COLORADO CITY MUNI - MOHAVE						
2017	Land:Acquire Miscellaneous Land {Describe, e.g., Land For Outer Marker, Relocate Road}	Acquire approx. 172 acres of BLM land around the Rwy's including Parcel 7: 404-44-005, 25.4 acres; Parcel 8: 404-27-044, 146.9 acres; Parcel 11: 404-44-004, .80 acres; and Parcel 12: 404-44-003, 4.7 acres.	\$4,470	\$4,470	\$91,060	\$100,000
2017	APMS - Taxiway Pavement Preservation	Crack Seal and Rubberized Asphalt Emulsion Seal Coat TWBCL 10	\$58,353	\$6,484	\$0	\$64,837
2018	Equipment:Acquire Security Equipment/Install Perimeter Fencing [Not Part 107] - Standards	Acquire and install security perimeter fence (approx. 18,266 lf).	\$21,232	\$21,233	\$432,535	\$475,000
2019	Taxiways:Construct Taxiway - Capacity	Design and Constr. Twy A from Twy A3 to end of Rwy 29 (1,890 ft x 35 ft). Move lighted wind cone outside the RVZ and constr. segmented circle.	\$32,408	\$32,407	\$660,185	\$725,000
Airport Total:			\$134,789	\$82,922	\$1,557,126	\$1,774,837
COOLIDGE MUNI - PINAL						
2015	Taxiways:Install Taxiway Lighting (e.g., SMGCS, Reflectors, MITL) - Standards	Installation of new MITL along the recently constr. Twy A south of the intersection with Twy A2	\$8,940	\$8,940	\$182,120	\$200,000
2015	Taxiways:Construct Taxiway [Includes Relocation]	Design Twy B4 approx. 75 ft x 1,150 ft	\$3,129	\$3,129	\$63,742	\$70,000
2015	Runways:Rehabilitate Runway <Lighting/Electrical Vault>	Rehab. of the runway 17-35 lighting/electrical vault	\$10,728	\$10,728	\$218,544	\$240,000
2015	Runways:Rehabilitate Runway - Reconstruct	Design Rwy 5-23 rehab./recon. including lighting/electric vault approx. 170 ft x 5,580 ft.	\$22,350	\$22,350	\$455,300	\$500,000
2015	Runway MIRL/HIRL, Install	Rwy 17-35 MIRL and signage, (approx. 3,900 lf).	\$335,700	\$37,300	\$0	\$373,000
2015	Runways:Install Runway <Vertical/Visual> Guidance System [PAPI/VASI/REIL/ALS/etc.] - Standards	Design Rwy 5-23 Vertical/Visual Guidance System, PAPI/REIL	\$1,341	\$1,341	\$27,318	\$30,000
2015	Taxiways:Rehabilitate Taxiway - Reconstruct	Design- Twy A recon./rehab. Approx. 75 ft x 2,000 ft Design- Twy B recon./rehab. Approx. 75 ft x 850 ft	\$5,364	\$5,364	\$109,272	\$120,000
2016	APMS - Runway Pavement Preservation	Thin Asphalt Overlay/PFC RW523CM 10C	\$511,870	\$56,874	\$0	\$568,744
2016	Runways:Rehabilitate Runway - Reconstruct	Recon./Rehab. Rwy 5-23 (Approx. 150 ft x 5,560 ft)	\$223,500	\$223,500	\$4,553,000	\$5,000,000
2017	Taxiways:Construct Taxiway [Includes Relocation]	Constr. Twy B4. Approx. 75 ft x 1,150 ft; Install MITLs	\$26,820	\$26,820	\$546,360	\$600,000
2017	Taxiways:Rehabilitate Taxiway - Reconstruct	Constr. Twy A recon./rehab. approx. 75 ft x 2,000 ft; install MITLs Constr. Twy B recon./rehab. Approx. 75 ft x 850 ft; install MITLs	\$63,921	\$63,921	\$1,302,158	\$1,430,000
2018	Runways:Rehabilitate Runway <Lighting/Electrical Vault>	Rwy 5-23 rehab./constr. MIRL/Vertical Visual Guidance System, PAPI/REIL, Ph. 3	\$35,760	\$35,760	\$728,480	\$800,000
2018	Runways:Install Runway <Vertical/Visual> Guidance System [PAPI/VASI/REIL/ALS/etc.] - Standards	Constr. Rwy Vertical/Visual Guidance System, constr. Rwy 17-35 PAPI	\$8,940	\$8,940	\$182,120	\$200,000
2018	APMS - Runway Pavement Preservation	Thin Asphalt Overlay/PFC RW523CM 10NS	\$553,639	\$61,515	\$0	\$615,154

Airport Projects - by Airport

Airport Name - County

FY	Project Component	Project Description	State Share	Local Share	Federal Share	Project Total
COOLIDGE MUNI - PINAL						
2019	Other:Improve Airport <Drainage/Erosion Control/Miscellaneous Improvements> - Standards	Design and constr. security fencing, approx. 16,000 lf	\$28,608	\$28,608	\$582,784	\$640,000
Airport Total:			\$1,840,610	\$595,090	\$8,951,198	\$11,386,898
COTTONWOOD - YAVAPAI						
2015	Equipment:Acquire Security Equipment/Install Fencing [Required By Part 107] - Safety/Security	Install 1,500 feet of fence per FAA standards.	\$6,705	\$6,705	\$136,590	\$150,000
2015	Planning:<Conduct/Update> <Airport Master Plan Study {ALP, EA, etc.}>	Update the ALP and the master plan study.	\$7,822	\$7,823	\$159,355	\$175,000
2015	Apron:Expand/Strengthen Apron - Standards	Construct a 1 inch mill and 2 inch overlay on the newest portion of the apron and a reconstruction of 4 inch overlay on the existing base on the oldest portion of the apron.	\$48,723	\$48,723	\$992,554	\$1,090,000
2016	APMS - Apron Pavement Preservation	Crack Seal and Rubberized Asphalt Emulsion Seal Coat A01CT 20	\$67,953	\$7,550	\$0	\$75,503
2016	APMS - Taxiway Pavement Preservation	Thin Asphalt Overlay/PFC TWACT 10	\$203,105	\$22,567	\$0	\$225,672
2016	Runways:Construct Runway [Includes Relocation] - Standards	Publishing declared distances along with extending Twy A to the south would allow pilots another 300 feet of Rwy on takeoff without altering the RPZ.	\$14,304	\$14,304	\$291,392	\$320,000
2017	Planning:Conduct <Environmental Assessment/Environmental Impact Statement/Feasibility> <Study/Update>	Conduct an EA for construction of an aircraft wash rack.	\$8,940	\$8,940	\$182,120	\$200,000
2018	Taxiways:Rehabilitate Taxiway - Reconstruct	Place an asphalt overlay on Taxiway A.	\$9,387	\$9,387	\$191,226	\$210,000
2018	Runways:Extend Runway- Capacity	Extend Rwy 32 per the ALP.	\$3,576	\$3,576	\$72,848	\$80,000
2019	Runways:Extend Runway- Capacity	Extend Rwy 32 per the ALP.	\$16,316	\$16,315	\$332,369	\$365,000
2019	Planning:Conduct <Environmental Assessment/Environmental Impact Statement/Feasibility> <Study/Update>	EA to purchase approx. 29.6 acres to allow for future airport development such as the extension of the Rwy per the ALP.	\$10,728	\$10,728	\$218,544	\$240,000
Airport Total:			\$397,559	\$156,618	\$2,576,998	\$3,131,175
DOUGLAS MUNI - COCHISE						
2016	Runway, Rehabilitate	Design for reconstruction of Rwy 3/21 (5,760 ft x 75 ft).	\$180,000	\$20,000	\$0	\$200,000
2016	APMS - Apron Pavement Preservation	Crack Seal and Rubberized Asphalt Emulsion Seal Coat A01DM 10	\$48,996	\$5,444	\$0	\$54,440
2016	APMS - Apron Pavement Preservation	Thin Asphalt Overlay/PFC A02DM 10	\$411,905	\$45,767	\$0	\$457,672
2017	Runway, Rehabilitate	Reconstruction of Rwy 3/21 (5760 ft x 75 ft).	\$1,800,000	\$200,000	\$0	\$2,000,000
2017	Perimeter Fencing - Barbed Wire, Install (New)	Install 5,280 ft (1 mile) of perimeter security fencing.	\$270,000	\$30,000	\$0	\$300,000
2018	Perimeter Fencing - Barbed Wire, Install (New)	Install 5,280 ft (1 mile) of perimeter security fencing	\$180,000	\$20,000	\$0	\$200,000
2019	Auto Parking, Construct	Construct parking lot with lighting (300 ft x 300 ft).	\$270,000	\$30,000	\$0	\$300,000

Airport Projects - by Airport

Airport Name - County
FY Project Component

Project Description

State Share

Local Share

Federal Share

Project Total

DOUGLAS MUNI - COCHISE

Airport Total: \$3,160,901 \$351,211 \$0 \$3,512,112

ELOY MUNI - PINAL

2015	Planning:Conduct <Environmental Assessment/Environmental Impact Statement/Feasibility> <Study/Update>	Preparation of an EA for drainage improvement projects identified by the current FAA funded Airport Drainage Study.	\$5,588	\$5,587	\$113,825	\$125,000
2015	Planning:Conduct <Environmental Assessment/Environmental Impact Statement/Feasibility> <Study/Update>	Prepare an EA for the relocation of Twy A to meet or exceed FAA design standards. The project also includes approx. 8 acres of donated land acquisition (APN 404-05-010J).	\$13,410	\$13,410	\$273,180	\$300,000
2015	Other:Improve Airport <Drainage/Erosion Control/Miscellaneous Improvements> - Standards	Design of misc. drainage improvements to be determined by the ongoing FAA-funded Airport Drainage Study. This would only include projects that could receive CatEx.	\$2,235	\$2,235	\$45,530	\$50,000
2015	Taxiways:Construct Taxiway - Capacity	Constr. of 3 Twys (approx. 8,000 sy) to serve new hangars located on the southwest side of the airport directly west of the extg. hangars.	\$44,700	\$44,700	\$910,600	\$1,000,000
2016	Airport Drainage, Improve	Constr. of misc. drainage improvements to be determined by the ongoing Airport Drainage Study. This would only include projects that FAA can CatEx.	\$450,000	\$50,000	\$0	\$500,000
2017	Other:Improve Airport <Drainage/Erosion Control/Miscellaneous Improvements> - Standards	Design of misc. drainage improvements to be determined by the ongoing Airport Drainage Study. This would include projects which have received a FONSI from FAA.	\$2,235	\$2,235	\$45,530	\$50,000
2017	Planning:Conduct <Environmental Assessment/Environmental Impact Statement/Feasibility> <Study/Update>	Prepare an EA for a 500 ft extension to Rwy 2, including land acquisition (approx. 40 acres). APN 404-05-009B	\$13,410	\$13,410	\$273,180	\$300,000
2018	Other:Improve Airport <Drainage/Erosion Control/Miscellaneous Improvements> - Standards	Constr. of misc. drainage improvements to be determined by the ongoing Airport Drainage Study (Ph. 2). This would include projects which have received a FONSI from FAA.	\$22,350	\$22,350	\$455,300	\$500,000
2018	Taxiways:Construct Taxiway [Includes Relocation]	Relocation of Twy A (17,000 sy) to meet or exceed current FAA design standards. The project also includes new MITL Ph. 2.	\$111,750	\$111,750	\$2,276,500	\$2,500,000
2019	Land:Acquire <Land/Easement> For Development/Relocation	Reimbursement for the acquisition of approx. 40 acres of land for the extension of Rwy 4 (APN 404-05-010J).	\$35,760	\$35,760	\$728,480	\$800,000
Airport Total:			\$701,438	\$301,437	\$5,122,125	\$6,125,000

Airport Projects - by Airport

Airport Name - County

FY	Project Component	Project Description	State Share	Local Share	Federal Share	Project Total
ERNEST A. LOVE FIELD - YAVAPAI						
2015	Runway Vertical/Visual Guidance System, Install/Upgrade	Design upgrades for Rwy 3R/21L and 3L/21R REIL and PAPI systems.	\$67,500	\$7,500	\$0	\$75,000
2015	Runway MIRL/HIRL, Install	Design MIRL, signage upgrades and distance remaining signs for Rwy 3R/21L and 3L/21R.	\$112,500	\$12,500	\$0	\$125,000
2015	Apron, Rehabilitate	Design/constr. rehab. and structural upgrade of 91,696 sf ACP apron east of Twy D (USFS Apron) used by USFS fire bombers during summer fire season and for large AC parking.	\$1,440,000	\$160,000	\$0	\$1,600,000
2015	Other:Environmental Mitigation	Design/constr. AC wash facility (70 ft x 70 ft) north of Twy A.	\$7,500	\$7,500	\$285,000	\$300,000
2015	Other:<Light/Mark/Remove> Obstructions - Standards	Constr. mitigation of on-airport obstructions to FAR Part 77 surfaces, approx. 150 obstructions, 60 building points, 40+ trees and others as determined by FAA.	\$8,625	\$8,625	\$327,750	\$345,000
2015	Buildings:<Construct/Expand/Improve/Modify/Rehabilitate> Aircraft Rescue & Fire Fighting Building [Pt. 139 Only] - Safety/Security	Design 12,000 sf ARFF/ops/maintenance facility mid-field south of Twy D.	\$12,500	\$12,500	\$475,000	\$500,000
2015	Land:Acquire Land/Easement For Approaches	Ph. 1 Prepare EA for acquisition of development & approach protection land for Rwy 21L Extension to 10,570 ft (138 acres of APN 103-01-021G) and Rwy 12/30 RPZs (8.4 acres APNs 102-04-001A, 102-03-008, 102-06-001 and 102-06-006).	\$3,125	\$3,125	\$118,750	\$125,000
2015	Terminal Development:Construct Terminal Building - Capacity	Design of 26,000 sf airline terminal NW of Twy C and Twy E. Ph. 1 - Conduct EA, site study.	\$6,250	\$6,250	\$237,500	\$250,000
2015	Taxiways:Install Taxiway Lighting (MITL) [Required By Part 139] - Safety/Security	Constr. Twy E MITL, parallel to Rwy 12/30, 4,400 lf; relocate the extg. vault including upgrading emergency generator.	\$88,488	\$88,487	\$3,362,525	\$3,539,500
2015	Planning:Conduct <Environmental Assessment/Environmental Impact Statement/Feasibility> <Study/Update>	Ph. 1 EA for land for development: 19 acres (APN 102-03-037 through 102-03-056) and 119 acres for portions of APN 103-01-021G SE of mid-field, and 20.4 acres NW of Rwy 12 (APN 102-03-008, 102-04-008A, 102-04-003C, 102-04-006A).	\$4,875	\$4,875	\$185,250	\$195,000
2015	Planning:<Conduct/Update> <Airport Master Plan Study {ALP, EA, etc.}>	Planning study to improve commercial air service.	\$5,000	\$5,000	\$190,000	\$200,000
2016	Runway MIRL/HIRL, Install	Constr. lighting replacement and upgrade to Rwy 3R/21L and Twy C.	\$810,000	\$90,000	\$0	\$900,000
2016	Buildings:<Construct/Expand/Improve/Modify/Rehabilitate> Aircraft Rescue & Fire Fighting Building [Pt. 139 Only] - Safety/Security	Constr. 12,000 sf ARFF facility mid-field south of Twy D.	\$175,000	\$175,000	\$6,650,000	\$7,000,000
2016	Land:Acquire <Land/Easement> For Development/Relocation	Acquire land for aeronautical development. Ph. 2: 19 acres (APN 102-03-037 through 102-03-056) and 30 acres for portions of APN 103-01-021G SE of mid-field per AMP.	\$21,438	\$21,437	\$814,625	\$857,500

Airport Projects - by Airport

Airport Name - County

FY	Project Component	Project Description	State Share	Local Share	Federal Share	Project Total
ERNEST A. LOVE FIELD - YAVAPAI						
2016	Runways:<Construct/Extend/Improve> Runway Safety Area [Non-Primary Airports] - Standards	Design Rwy 12/30 shift (approx. 150 ft ESE) for RSA requirements to include paving Rwy/Twy shoulders, realigning Twy F west of Twy C, Twy E lighting, drainage improvements between Twy F and Rwy 12/30 in the RSA.	\$16,250	\$16,250	\$617,500	\$650,000
2016	APMS - Taxiway Pavement Preservation	Thin Asphalt Overlay/PFC TWDPR 10	\$1,203,071	\$133,675	\$0	\$1,336,745
2016	APMS - Taxiway Pavement Preservation	Crack Seal and Rubberized Ernest A. Love Field Airport Asphalt Emulsion Seal Coat TWAPR 10	\$66,905	\$7,434	\$0	\$74,339
2016	APMS - Taxiway Pavement Preservation	Crack Seal and Rubberized Asphalt Emulsion Seal Coat TWKPR 10	\$9,444	\$1,049	\$0	\$10,493
2016	APMS - Runway Pavement Preservation	Crack Seal and Rubberized Asphalt Emulsion Seal Coat RW3L21RPR 10	\$98,691	\$10,966	\$0	\$109,657
2016	Equipment:Acquire Security Equipment/Install Fencing [Required By Part 107] - Safety/Security	Design security upgrades to include 29,000 lf of perimeter fencing, with cameras and access control devices.	\$3,947	\$3,948	\$150,000	\$157,895
2016	Terminal Development:Construct Terminal Building - Capacity	Design terminal to 30% design.	\$17,500	\$17,500	\$665,000	\$700,000
2016	Runway MIRL/HIRL, Install	Design lighting replacement and upgrade to Rwy 3L/21R and Twys A and B.	\$135,000	\$15,000	\$0	\$150,000
2016	Land:Acquire Land/Easement For Approaches	Acquisition of 138 acres for Rwy 21L Extension to 10,570 ft (138 acres of APN 103-01-021G) and 8.4 acres for Rwy 12/30 RPZs (APNs 102-04-001A, 102-03-008, 102-06-001 and 102-06-006).	\$63,438	\$63,437	\$2,410,625	\$2,537,500
2017	Land:Acquire <Land/Easement> For Development/Relocation	Acquire land for aeronautical development. Ph. 3: 20.4 acres NNW Rwy 12 (APN 102-04-008A, 102-04-003C, 102-04-006A and portion of 102-04-008) per AMP.	\$8,216	\$8,216	\$312,216	\$328,648
2017	Runways:<Construct/Extend/Improve> Runway Safety Area [Non-Primary Airports] - Standards	Constr. Rwy 12/30 shift (relocation - approx. 7,500 sy) for RSA requirements, paving all Rwy and Twy shoulders (100,000 lf), and realignment of Twy F (9,700 sy), Ph. 1.	\$81,250	\$81,250	\$3,087,500	\$3,250,000
2017	Terminal Development:Expand Terminal Building - Capacity	Design of 26,000 sf airline terminal NW of TWY C and TWY E. Ph. 3 - Conduct 100% design.	\$17,500	\$17,500	\$665,000	\$700,000
2017	APMS - Runway Pavement Preservation	Mill and Replace PFC RW3R21LPR 10	\$2,516,812	\$279,646	\$0	\$2,796,458
2017	Equipment:Acquire Security Equipment/Install Fencing [Required By Part 107] - Safety/Security	Constr. security upgrades to include 29,000 lf of perimeter fencing, with cameras and access control devices.	\$37,500	\$37,500	\$1,425,000	\$1,500,000
2017	Runway MIRL/HIRL, Install	Constr. lighting replacement and upgrade to Rwy 3L/21R and Twys A and B.	\$1,474,967	\$163,885	\$0	\$1,638,852
2017	APMS - Apron Pavement Preservation	Thin Asphalt Overlay/PFC ANORTHPR 10	\$615,547	\$68,394	\$0	\$683,941

Airport Projects - by Airport

Airport Name - County

FY	Project Component	Project Description	State Share	Local Share	Federal Share	Project Total
ERNEST A. LOVE FIELD - YAVAPAI						
2018	Runways:<Construct/Extend/Improve> Runway Safety Area [Non-Primary Airports] - Standards	Constr. Rwy 12/30 shift (relocation - approx. 7,500 sy) for RSA requirements, paving all Rwy and Twy shoulders (100,000 lf), and realignment of Twy F (9,700 sy), Ph. 2.	\$81,250	\$81,250	\$3,087,500	\$3,250,000
2018	Runways:Extend Runway- Capacity	Complete site selection study for location of new ATCT; conduct EA.	\$3,750	\$3,750	\$142,500	\$150,000
2018	Terminal Development:Construct Terminal Building - Capacity	Design of 26,000 sf airline terminal NW of Twy C and Twy E. Ph. 4: Construct replacement hangars and buildings to be demolished in Ph. 5.	\$125,000	\$125,000	\$4,750,000	\$5,000,000
2018	Land:Acquire <Land/Easement> For Development/Relocation	Acquire land for aeronautical development. Ph. 4: 56 acres for portions of APN 103-01-021G SE of mid-field per AMP.	\$24,500	\$24,500	\$931,000	\$980,000
2019	Terminal Development:Construct Terminal Building - Capacity	Constr. 26,000 sf airline terminal NW of Twy C and Twy E.	\$332,666	\$332,667	\$12,641,318	\$13,306,651
2019	Planning:<Conduct/Update> <Airport Master Plan Study {ALP, EA, etc.}>	Conduct update of 2010 Airport Master Plan.	\$6,250	\$6,250	\$237,500	\$250,000
2019	Land:Acquire <Land/Easement> For Development/Relocation	Acquire land for aeronautical development. Ph. 5: 33 acres for portions of APN 103-01-021G SE of midfield per AMP.	\$14,438	\$14,437	\$548,625	\$577,500
2019	Runways:Extend Runway- Capacity	EA for NE extension of Rwy 21L 2,954 ft x 150 ft; upgrade pavement strength to 200,000 lbs.; extension of Twy D 3,000 ft to NE; upgrade pavement strength to 200,000 lbs.	\$12,500	\$12,500	\$475,000	\$500,000
2019	Runways:Extend Runway- Capacity	Design replacement ATCT at location determined by site study in prior fiscal year.	\$12,500	\$12,500	\$475,000	\$500,000
Airport Total:			\$9,741,693	\$2,141,303	\$45,267,684	\$57,150,679
FALCON FLD - MARICOPA						
2015	Taxiways:Construct Taxiway [Includes Relocation]	Realign and constr. Twy A between Rwy 4L and Rwy 4R (700 ft x 50 ft).	\$68,606	\$68,605	\$1,397,590	\$1,534,801
2015	Runway, Extend	Design Blast Pads (100 ft x 75 ft) for Rwy 4L/22R	\$67,500	\$7,500	\$0	\$75,000
2016	Runway, Extend	Construct blast pads (100 ft x 75 ft) on Rwy 4L/22R.	\$644,670	\$71,630	\$0	\$716,300
2016	Taxiways:Construct Taxiway [Includes Relocation]	Realign and constr. Twy C between approach ends of Rwy 22L and Rwy 22R (700 ft x 50 ft).	\$69,902	\$69,902	\$1,424,003	\$1,563,807
2017	APMS - Runway Pavement Preservation	Thin Asphalt Overlay/PFC RW4R22LMF 10	\$734,736	\$81,637	\$0	\$816,373
2017	Runways:Install Runway Lighting (HIRL, MIRL) [Non Part 139 CS] - Statutory Emphasis Programs	Design and upgrade airfield signage (approx. 65 signs) and lighting system (84 rwy lights, 14 threshold lights, and 316 twy lights) for full replacement on all rwys and twys.	\$7,110	\$7,110	\$144,835	\$159,055
2017	Runways:<Construct/Extend/Improve> Runway Safety Area [Non-Primary Airports] - Standards	Design/constr. safety area improvements to install rock in all safety and infield areas.	\$53,640	\$53,640	\$1,092,720	\$1,200,000
2017	Apron Lighting, Install (New)	Design apron lighting for AC parking aprons south of Twy D (approx. 5,000 ft).	\$93,828	\$10,425	\$0	\$104,253

Airport Projects - by Airport

Airport Name - County

FY	Project Component	Project Description	State Share	Local Share	Federal Share	Project Total
FALCON FLD - MARICOPA						
2018	Runways:Install Runway Lighting (HIRL, MIRL) [Non Part 139 CS] - Statutory Emphasis Programs	Install airfield signs (approx. 65), airfield lighting (84 rwy lights, 14 threshold lights, and 316 twy lights) for full replacement on both rwys and all twys.	\$72,320	\$72,321	\$1,473,264	\$1,617,905
2018	Planning:Conduct <Environmental Assessment/Environmental Impact Statement/Feasibility> <Study/Update>	EA of proposed midfield Twy F constr.	\$6,705	\$6,705	\$136,590	\$150,000
2018	APMS - Taxiway Pavement Preservation	Mill and Replace PFC TWEMF 10	\$678,560	\$75,396	\$0	\$753,955
2018	Planning:Conduct <Environmental Assessment/Environmental Impact Statement/Feasibility> <Study/Update>	EA for removal of trees in the RPZs of Rwy 4R and 4L.	\$6,705	\$6,705	\$136,590	\$150,000
2018	Apron Lighting, Install (New)	Install apron lighting - 5,000 ft apron lighting full length south of Twy D.	\$715,747	\$79,527	\$0	\$795,274
2019	Taxiways:Construct Taxiway [Includes Relocation]	Design/constr. east twy (900 ft x 150 ft) from T-hangar apron east.	\$138,593	\$138,594	\$2,823,337	\$3,100,524
2019	Taxiways:Construct Taxiway - Capacity	Design/constr. Ph. 1 of mid-field connector Twy F.	\$239,145	\$239,145	\$4,871,710	\$5,350,000
2019	Other:<Light/Mark/Remove> Obstructions - Standards	Removal of trees in approach zone of Rwy 4L/4R.	\$44,700	\$44,700	\$910,600	\$1,000,000
Airport Total:			\$3,642,466	\$1,033,542	\$14,411,239	\$19,087,247

FLAGSTAFF PULLIAM - COCONINO

2015	Runways:Rehabilitate Runway - Reconstruct	Mill and overlay Rwy 3/21 (150 ft x 8,800 ft) including remarking.	\$147,510	\$147,510	\$3,004,980	\$3,300,000
2016	Other:<Construct/Rehabilitate> Parking Lot [Non Revenue Producing-Non Hub/MAP] - Other	Constr. Ph. 1 multi-level non-revenue parking structure to increase passenger parking capacity at the airport terminal (approx. 350 spaces).	\$178,800	\$178,800	\$3,642,400	\$4,000,000
2016	Planning:<Conduct/Update> <Airport Master Plan Study {ALP, EA, etc.}>	Complete Master Plan Review and Update, in addition complete the EA for Heliport and Parking Garage projects.	\$20,115	\$20,115	\$409,770	\$450,000
2016	APMS - Runway Pavement Preservation	Crack Seal and Rubberized Asphalt Emulsion Seal Coat RW321FG 10	\$356,419	\$39,602	\$0	\$396,021
2017	Heliport, Construct	Design, pave, and constr. approx. 141,000 sf PCC heliport including utility relocation and storm water tie ins.	\$1,575,335	\$175,037	\$0	\$1,750,372
2017	Other:<Construct/Rehabilitate> Parking Lot [Non Revenue Producing-Non Hub/MAP] - Other	Construct Ph. 2 multi-level non-revenue parking structure to increase passenger parking capacity at the airport terminal (approx. 350 spaces).	\$178,800	\$178,800	\$3,642,400	\$4,000,000
2018	Guidance Signage, Rehabilitate	Repaint & restripe Rwy, Twy, and connectors to meet A/C standards.	\$382,500	\$42,500	\$0	\$425,000
2018	Land:Acquire Land/Easement For Approaches	Purchase 167.89 acres of Airport land, which contains RPZ, Avigation Easement, Lake Mary Park land and the Water Treatment Plant	\$300,160	\$300,161	\$6,114,679	\$6,715,000
2019	Other:<Light/Mark/Remove> Obstructions - Standards	Rwy and Twy markings will be redone to meet new A/C requirements.	\$87,501	\$87,500	\$1,782,506	\$1,957,507

Airport Projects - by Airport

Airport Name - County

<i>FY</i>	<i>Project Component</i>	<i>Project Description</i>	<i>State Share</i>	<i>Local Share</i>	<i>Federal Share</i>	<i>Project Total</i>
FLAGSTAFF PULLIAM - COCONINO						
2019	Perimeter/Service Road, Rehabilitate	Grade and Pave Perimeter Road inside the Perimeter Fence	\$382,500	\$42,500	\$0	\$425,000
Airport Total:			\$3,609,640	\$1,212,525	\$18,596,735	\$23,418,900
GLENDALE MUNI - MARICOPA						
2015	Land For Protection (Safety Areas), Acquire	Acquire land - Conair property (approximately 40 acres).	\$1,800,000	\$200,000	\$0	\$2,000,000
2015	Apron:Rehabilitate Apron - Reconstruction	Construct pavement rehabilitation/Modify ramp lighting (Center Ramp, approximately 63,000 sy).	\$134,100	\$134,100	\$2,731,800	\$3,000,000
2016	Planning:<Conduct/Update> <Airport Master Plan Study {ALP, EA, etc.}>	Update Part 150 Noise Study.	\$6,705	\$6,705	\$136,590	\$150,000
2016	Land For Protection (Safety Areas), Acquire	Acquire land: Conair property (approximately 40 acres).	\$1,800,000	\$200,000	\$0	\$2,000,000
2016	APMS - Taxiway Pavement Preservation	Crack Seal and Rubberized Asphalt Emulsion Seal Coat TWAGL 10	\$142,384	\$15,820	\$0	\$158,204
2016	APMS - Apron Pavement Preservation	Thin Asphalt Overlay/PFC RW321FG 10	\$192,900	\$21,433	\$0	\$214,333
2017	Apron:Construct Apron - Capacity	Design southwest public apron (85,300 sy).	\$11,175	\$11,175	\$227,650	\$250,000
2017	Land For Protection (Safety Areas), Acquire	Acquire land: Conair property (approximately 40 acres).	\$1,800,000	\$200,000	\$0	\$2,000,000
2017	Apron:Rehabilitate Apron - Reconstruction	Construct pavement maintenance North Ramp (115,400 sy).	\$22,350	\$22,350	\$455,300	\$500,000
2018	Land For Protection (Safety Areas), Acquire	Acquire land: Conair property (approximately 40 acres).	\$1,800,000	\$200,000	\$0	\$2,000,000
2018	Apron:Construct Apron - Capacity	Construct southwest public apron, Phase I (46,400 sy).	\$113,985	\$113,985	\$2,322,030	\$2,550,000
2018	Apron:Rehabilitate Apron - Reconstruction	Construct pavement maintenance South Apron (45,400 sy).	\$8,940	\$8,940	\$182,120	\$200,000
2019	Planning:Conduct <Environmental Assessment/Environmental Impact Statement/Feasibility> <Study/Update>	Conduct EA for channelization of New River.	\$8,940	\$8,940	\$182,120	\$200,000
2019	Apron:Construct Apron - Capacity	Construct southwest public apron, Phase II (38,900 sy).	\$95,658	\$95,658	\$1,948,684	\$2,140,000
2019	Land For Protection (Safety Areas), Acquire	Acquire land: Conair property (approximately 40 acres).	\$1,800,000	\$200,000	\$0	\$2,000,000
Airport Total:			\$9,737,137	\$1,439,106	\$8,186,294	\$19,362,537

Airport Projects - by Airport

Airport Name - County

FY	Project Component	Project Description	State Share	Local Share	Federal Share	Project Total
GRAND CANYON NATIONAL PARK - COCONINO						
2015	Other:Improve Airport <Drainage/Erosion Control/Miscellaneous Improvements> - Standards	Conduct feasibility study on relocating retaining wall currently in RSA to outside of RSA at north end of airfield. Design retention wall.	\$15,645	\$15,645	\$318,710	\$350,000
2015	Runways:Install Runway Lighting (HIRL, MIRL) [Required By Part 139] - Safety/Security	Install new airfield lighting and construct 20 ft shoulders to 8,999 ft Rwy 3/21.	\$178,800	\$178,800	\$3,642,400	\$4,000,000
2015	Terminal Development:<Improve/Modify/Rehabilitate> Terminal Building - Standards	Rehabilitate existing terminal to meet standards for security screening, secured lounge, and baggage handling.	\$134,100	\$134,100	\$2,731,800	\$3,000,000
2016	APMS - Taxiway Pavement Preservation	Crack Seal and Rubberized Asphalt Emulsion Seal Coat TWPGC 10	\$328,512	\$36,501	\$0	\$365,013
2016	APMS - Apron Pavement Preservation	Crack Seal and Rubberized Asphalt Emulsion Seal Coat A01GC 10	\$34,474	\$3,831	\$0	\$38,305
2016	Planning:Conduct <Environmental Assessment/Environmental Impact Statement/Feasibility> <Study/Update>	Conduct water well EA at sites determined by site survey.	\$13,410	\$13,410	\$273,180	\$300,000
2016	Ground Transportation:<Construct/Expand/Improve/Modify/Rehabilitate> Service Road - Other	Upgrade perimeter road on west side. Dimensions 12,800 ft x 20 ft.	\$89,400	\$89,400	\$1,821,200	\$2,000,000
2016	APMS - Apron Pavement Preservation	Crack Seal and Rubberized Asphalt Emulsion Seal Coat A01GC 20	\$316,847	\$35,205	\$0	\$352,052
2017	Other:Environmental Mitigation	Based on wildlife hazard assessment, corrective action to resolve identified hazard.	\$89,400	\$89,400	\$1,821,200	\$2,000,000
2017	Other:<Light/Mark/Remove> Obstructions [Hazard Only e.g., Approaches] - Safety/Security	Relocation of the existing retaining wall which is currently in the RSA.	\$134,100	\$134,100	\$2,731,800	\$3,000,000
2018	Planning:Conduct <Environmental Assessment/Environmental Impact Statement/Feasibility> <Study/Update>	Conduct an EA for the new terminal building, location is determined by the terminal area study.	\$22,350	\$22,350	\$455,300	\$500,000
2018	Runways:<Apply Friction Course/Groove> Runway - Statutory Emphasis Programs	Conduct milling, overlay and re-grooving of Rwy 3/21 (8,999 ft x 150 ft).	\$223,500	\$223,500	\$4,553,000	\$5,000,000
2019	Planning:Conduct <Environmental Assessment/Environmental Impact Statement/Feasibility> <Study/Update>	Conduct an EA on extending south apron to the ARFF building.	\$13,410	\$13,410	\$273,180	\$300,000
Airport Total:			\$1,593,948	\$989,652	\$18,621,770	\$21,205,370
GRAND CANYON WEST - MOHAVE						
2015	Planning:Conduct <Environmental Assessment/Environmental Impact Statement/Feasibility> <Study/Update>	EA for new terminal building (+/- 42,000 sf) on west side of Rwy.	\$29,055	\$29,055	\$591,890	\$650,000
2015	Airport Drainage, Improve	Regrade and modify drainage to address ponding water east of Rwy 17.	\$180,000	\$20,000	\$0	\$200,000
2016	Terminal Development:Construct Terminal Building - Capacity	Terminal building (+/-42,000 sf) on west side of Rwy (design only).	\$67,050	\$67,050	\$1,365,900	\$1,500,000
2017	Terminal Development:Construct Terminal Building - Capacity	Construct terminal building (+/- 42,000 sf) on west side of Rwy 17/35 (construct only). Phase 1.	\$737,550	\$737,500	\$15,024,900	\$16,499,950

Airport Projects - by Airport

Airport Name - County

FY	Project Component	Project Description	State Share	Local Share	Federal Share	Project Total
GRAND CANYON WEST - MOHAVE						
2018	Terminal Development:Construct Terminal Building - Capacity	Construct terminal building (+/- 42,000 sq ft) on west side of Rwy 17/35 (construct only). Phase 2.	\$737,500	\$737,500	\$15,024,900	\$16,499,900
2019	Buildings:<Construct/Expand/Improve/Modify/Rehabilitate> Aircraft Rescue & Fire Fighting Building [Pt. 139 Only] - Safety/Security	Construct ARFF and SRE facility (design only).	\$22,350	\$22,350	\$455,300	\$500,000
Airport Total:			\$1,773,505	\$1,613,455	\$32,462,890	\$35,849,850
GREENLEE COUNTY - GREENLEE						
2015	Land:Acquire Land/Easement For Approaches	Acquire 2.7 Acres for Rwy 7 RPZ (State Land, No Parcel ID available).	\$5,588	\$5,587	\$113,825	\$125,000
2015	Land:Acquire <Land/Easement> For Development/Relocation	Acquire .40 Acres for airport entrance roads (State Land, Parcel ID #300-16-004 & 005).	\$2,235	\$2,235	\$45,530	\$50,000
2015	Ground Transportation:<Construct/Expand/Improve/Modify/Rehabilitate> Access Road - Other	Construct airport entrance road relocation per Master Plan (1,200 ft x 24 ft).	\$15,645	\$15,645	\$318,710	\$350,000
2015	Obstructions, Light/Mark/Remove (Safety Areas)	Obstruction Removal (overhead electrical; remove 8 poles and place 1800 lf of electrical line underground).	\$180,000	\$20,000	\$0	\$200,000
2016	APMS - Taxiway Pavement Preservation	Thin Asphalt Overlay/PFC TWAGR 10	\$132,813	\$14,757	\$0	\$147,570
2016	Other:Install <Guidance/Other> Signs [Not Part 139] - Standards	Update design guidance sign nstallation (entire airport).	\$670	\$671	\$13,659	\$15,000
2016	Taxiways:Install Taxiway Lighting (MITL) [Non Part 139 CS] - Statutory Emphasis Programs	Design airfield MITL (5,100 ft. x 40 ft.)	\$3,352	\$3,353	\$68,295	\$75,000
2017	Taxiways:Install Taxiway Lighting (MITL) [Non Part 139 CS] - Statutory Emphasis Programs	Construct airfield MITL (5,100 ft x 40 ft).	\$21,232	\$21,233	\$432,535	\$475,000
2017	Other:Install <Guidance/Other> Signs [Not Part 139] - Standards	Construct guidance sign installation (entire airport).	\$6,705	\$6,705	\$136,590	\$150,000
2018	Security Fencing - Chain Link, Install (New)	Update design perimeter fencing plans (9,700 lf).	\$13,500	\$1,500	\$0	\$15,000
2018	Planning:<Conduct/Update> <Airport Master Plan Study {ALP, EA, etc.}>	Update Airport Master Plan.	\$5,588	\$5,587	\$113,825	\$125,000
2018	Buildings:<Construct/Expand/Improve/Modify/Rehabilitate> Building - Standards	Construct Conventional Hangar/FBO Facilities.	\$4,470	\$4,470	\$91,060	\$100,000
2019	Equipment:Acquire Security Equipment/Install Perimeter Fencing [Not Part 107] - Standards	Construct perimeter fencing (9,700 lf).	\$8,940	\$8,940	\$182,120	\$200,000
Airport Total:			\$400,738	\$110,683	\$1,516,149	\$2,027,570

Airport Projects - by Airport

Airport Name - County

FY	Project Component	Project Description	State Share	Local Share	Federal Share	Project Total
H.A. CLARK MEMORIAL FIELD - COCONINO						
2015	Apron:Rehabilitate Apron - Reconstruction	Recon. Original apron (approx. 4,500 sy).	\$55,875	\$55,875	\$1,138,250	\$1,250,000
2015	Planning:<Conduct/Update> <Airport Master Plan Study {ALP, EA, etc.}>	Complete EA for the Land Acquisition.	\$4,470	\$4,470	\$91,060	\$100,000
2016	Perimeter/Service Road, Construct (New)	Constr. perimeter road - Ph. 1 (approx. 15,000 lf).	\$540,000	\$60,000	\$0	\$600,000
2016	APMS - Runway Pavement Preservation	Thin Asphalt Overlay/PFC RW1836WI 10	\$812,045	\$90,227	\$0	\$902,272
2016	Ground Transportation:<Construct/Expand/Improve/Modify/Rehabilitate> Access Road - Other	Rehab. airport access road (approx. 1,000 lf).	\$15,645	\$15,645	\$318,710	\$350,000
2017	Land:Acquire Land/Easement For Approaches	Acquire approx. 254 acres of land for Rwy RPZ protection and future development. Parcel numbers are N/A due to federal ownership.	\$55,875	\$55,875	\$1,138,250	\$1,250,000
2018	Apron:Construct Apron - Environmental Mitigation	Constr. north GA apron Ph. 1 (approx. 4,000 sy).	\$33,525	\$33,525	\$682,950	\$750,000
2018	Auto Parking, Construct	Design expanded auto parking (phased) - non-revenue (approx. 1,200 sy).	\$67,500	\$7,500	\$0	\$75,000
2019	Apron, Construct (New)	Design phased terminal apron expansion south of extg. apron (approx. 10,000 sy).	\$135,000	\$15,000	\$0	\$150,000
2019	Planning:<Conduct/Update> <Airport Master Plan Study {ALP, EA, etc.}>	Update airport master plan.	\$7,822	\$7,823	\$159,355	\$175,000
2019	Other:<Construct/Rehabilitate> Parking Lot [Non Revenue Producing-Non Hub/MAP] - Other	Constr. expanded non-revenue auto parking (approx. 1,200 sy) Ph. 1.	\$11,175	\$11,175	\$227,650	\$250,000
Airport Total:			\$1,738,932	\$357,115	\$3,756,225	\$5,852,272
HOLBROOK MUNI - NAVAJO						
2015	Other:<Light/Mark/Remove> Obstructions [Hazard Only e.g., Approaches] - Safety/Security	Relocate fuel farm adjacent to access road.	\$16,986	\$16,986	\$346,028	\$380,000
2016	Runways:Rehabilitate Runway - Reconstruct	Crack seal, fog seal, remark Rwy 3/21 (6,698 ft x 75 ft) PCI 71 and apron (33,600 sy) PCI 59.	\$11,175	\$11,175	\$227,650	\$250,000
2017	Runways:<Construct/Extend/Improve> Runway Safety Area [Non-Primary Airports] - Standards	RSA 3/21 grading (7,178 ft x 120 ft).	\$8,046	\$8,046	\$163,908	\$180,000
2018	Planning:Conduct <Environmental Assessment/Environmental Impact Statement/Feasibility> <Study/Update>	EA for Rwy 3/21 shift (1,302 ft x 75 ft).	\$11,175	\$11,175	\$227,650	\$250,000
Airport Total:			\$47,382	\$47,382	\$965,236	\$1,060,000
KEARNY - PINAL						
2016	APMS - Taxiway Pavement Preservation	Thin Asphalt Overlay/PFC A01KE 10	\$60,482	\$6,720	\$0	\$67,202
Airport Total:			\$60,482	\$6,720	\$0	\$67,202

Airport Projects - by Airport

Airport Name - County

FY	Project Component	Project Description	State Share	Local Share	Federal Share	Project Total
KINGMAN - MOHAVE						
2015	APMS - Runway Pavement Preservation	Thin Asphalt Overlay/PFC RW1735KG 10	\$655,142	\$72,793	\$0	\$727,935
2015	Taxiways:Rehabilitate Taxiway - Reconstruct	Construct Twy Charlie reconstruction (3,000 ft x 75 ft).	\$30,000	\$30,000	\$1,140,000	\$1,200,000
2015	Apron:Construct Apron - Capacity	South Ramp reconstruction, Phase 6 (approximately 131,311 sf).	\$38,250	\$38,250	\$1,453,500	\$1,530,000
2016	Land:Acquire Land/Easement For Approaches	Land Acquisition for Rwy 21 RPZ (approximately 28 acres, Parcel ID #310-01-073).	\$50,000	\$50,000	\$1,900,000	\$2,000,000
2016	Land For Protection (Safety Areas), Acquire	Land Acquisition for Rwy 21 RPZ (approximately 28 acres, Parcel ID #310-01-073).	\$1,800,000	\$200,000	\$0	\$2,000,000
2016	Planning:<Conduct/Update> <Airport Master Plan Study {ALP, EA, etc.}>	ALP Update & narrative.	\$3,750	\$3,750	\$142,500	\$150,000
2017	Planning:Conduct <Environmental Assessment/Environmental Impact Statement/Feasibility> <Study/Update>	Environmental planning for infield drainage, Twy B (2,200 ft x 75 ft), and perimeter road (26,400 ft x 15 ft).	\$6,250	\$6,250	\$237,500	\$250,000
2018	APMS - Apron Pavement Preservation	Thin Asphalt Overlay/PFC A01KG 45	\$40,232	\$4,470	\$0	\$44,702
2018	APMS - Taxiway Pavement Preservation	Crack Seal and Rubberized Asphalt Emulsion Seal Coat TWACK 10	\$57,164	\$6,352	\$0	\$63,516
2018	APMS - Apron Pavement Preservation	PCC Joint Resealing and Spall repair A02KG 10	\$98,324	\$10,925	\$0	\$109,249
2018	APMS - Taxiway Pavement Preservation	PCC Joint Resealing and Spall repair TWCKG 5	\$11,781	\$1,309	\$0	\$13,090
2018	Taxiway, Rehabilitate	Design Twy B reconstruction (2,200 ft. x 75 ft.)	\$90,000	\$10,000	\$0	\$100,000
2018	APMS - Apron Pavement Preservation	Thin Asphalt Overlay/PFC A01KG 15	\$202,898	\$22,544	\$0	\$225,442
2019	Ground Transportation:<Construct/Expand/Improve/Modify/Rehabilitate> Service Road - Other	Construct Airfield perimeter road (26,400 ft x 15 ft).	\$50,000	\$50,000	\$1,900,000	\$2,000,000
2019	Taxiways:Rehabilitate Taxiway - Reconstruct	Construct Twy B reconstruction (2,200 ft x 75 ft).	\$57,500	\$57,500	\$2,185,000	\$2,300,000
Airport Total:			\$3,191,291	\$564,143	\$8,958,500	\$12,713,934
LAKE HAVASU CITY - MOHAVE						
2015	Obstructions, Light/Mark/Remove (Safety Areas)	Relocate existing fire hydrant - Phase II (adjacent to large shade port).	\$36,000	\$4,000	\$0	\$40,000
2015	Airport Drainage, Improve	Construct erosion & FOD control improvements near Rwy 14 and Twy A.	\$297,000	\$33,000	\$0	\$330,000
2016	Buildings:<Construct/Expand/Improve/Modify/Rehabilitate> Building - Standards	Replace airfield electrical vault with a 12 ft x 16 ft pre-engineered building compliant with current electrical codes (adjacent to existing fire station). Replace airfield generator.	\$17,880	\$17,880	\$364,240	\$400,000
2016	Other:Improve Airport <Drainage/Erosion Control/Miscellaneous Improvements> - Standards	Construct green in-field pavement markings.	\$4,470	\$4,470	\$91,060	\$100,000

Airport Projects - by Airport

Airport Name - County

FY	Project Component	Project Description	State Share	Local Share	Federal Share	Project Total
LAKE HAVASU CITY - MOHAVE						
2017	Planning:<Conduct/Update> <Airport Master Plan Study {ALP, EA, etc.}>	ALP Update: Helicopter & Large Aircraft parking study - Redesignate areas of the main apron to accommodate helicopters and large aircraft parking and evaluate existing pavement strengths.	\$4,470	\$4,470	\$91,060	\$100,000
2017	APMS - Apron Pavement Preservation	Thin Asphalt Overlay/PFC A02LH 20	\$66,240	\$7,360	\$0	\$73,600
2017	APMS - Runway Pavement Preservation	Thin Asphalt Overlay/PFC RW1432LH 10	\$1,035,930	\$115,103	\$0	\$1,151,033
2017	APMS - Apron Pavement Preservation	Thin Asphalt Overlay/PFC A01LH 20	\$357,341	\$39,705	\$0	\$397,046
2018	Apron, Construct (New)	Construct helicopter & large aircraft parking areas (approximately 60,000 sf).	\$292,500	\$32,500	\$0	\$325,000
2019	Taxiways:Rehabilitate Taxiway - Reconstruct	Construct pavement preservation of Twy A and Twy B (95,000 sy).	\$17,880	\$17,880	\$364,240	\$400,000
Airport Total:			\$2,129,711	\$276,368	\$910,600	\$3,316,679
LAUGHLIN/BULLHEAD INTL - MOHAVE						
2015	Runways:<Extend/Widen/Strengthen> Runway [To Meet Standards] - Standards	Construct 1,000 ft extension (17,000 sy) to south end of Rwy 16/34 & includes extension of parallel Twy A (12,000 sy) & associated MIRL & MITL (Phase 3).	\$281,610	\$281,610	\$5,736,780	\$6,300,000
2016	Land:Acquire <Land/Easement> For Development/Relocation	Acquisition of 75 acres of ASLD property (Phase1). The APN is 213-32-003.	\$134,100	\$134,100	\$2,731,800	\$3,000,000
2016	Other:Improve Airport <Drainage/Erosion Control/Miscellaneous Improvements> - Standards	Miscellaneous RSA erosion protection & drainage improvements along Rwy 16/34 (Phase 1).	\$22,350	\$22,350	\$455,300	\$500,000
2017	APMS - Taxiway Pavement Preservation	Thin Asphalt Overlay/PFC TWALB 10	\$855,319	\$95,035	\$0	\$950,354
2017	Other:Improve Airport <Drainage/Erosion Control/Miscellaneous Improvements> - Standards	Miscellaneous RSA erosion protection & drainage improvements along Rwy 16/34 (Phase 2).	\$22,350	\$22,350	\$455,300	\$500,000
2017	Land:Acquire <Land/Easement> For Development/Relocation	Acquisition of 75 acres of ASLD property (Ph. 2). The APN is 213-32-003.	\$134,100	\$134,100	\$2,731,800	\$3,000,000
2018	Other:Improve Airport <Drainage/Erosion Control/Miscellaneous Improvements> - Standards	Miscellaneous RSA erosion protection & drainage improvements along Rwy 16/34 (Phase 3).	\$22,350	\$22,350	\$455,300	\$500,000
2018	Land:Acquire <Land/Easement> For Development/Relocation	Acquisition of 75 acres of ASLD property (Ph. 3). The APN is 213-32-003.	\$134,100	\$134,100	\$2,731,800	\$3,000,000
2019	Other:Improve Airport <Drainage/Erosion Control/Miscellaneous Improvements> - Standards	Miscellaneous RSA erosion protection & drainage improvements along Rwy 16/34 (Phase 4).	\$22,350	\$22,350	\$455,300	\$500,000
2019	Land:Acquire <Land/Easement> For Development/Relocation	Acquisition of 75 acres of ASLD property (Ph. 4). The APN is 213-32-003.	\$134,100	\$134,100	\$2,731,800	\$3,000,000
Airport Total:			\$1,762,729	\$1,002,445	\$18,485,180	\$21,250,354

Airport Projects - by Airport

Airport Name - County

FY	Project Component	Project Description	State Share	Local Share	Federal Share	Project Total
MARANA RGNL - PIMA						
2015	Planning:Conduct <Environmental Assessment/Environmental Impact Statement/Feasibility> <Study/Update>	EA - environmental survey and preparation of CatEx for Apron Rehab. (A,B,E).	\$6,705	\$6,705	\$136,590	\$150,000
2015	Apron:Rehabilitate Apron - Reconstruction	Design Rehab. of Transient, Open Tiedown, Helicopter & Terminal Aprons-constr. documents for rehab. of extg. aprons: Transient adjacent to the FBO; Open Tiedown parallel to 3-21; Helicopter adjacent to Twy A; and Terminal parallel to Twy E.	\$9,834	\$9,834	\$200,332	\$220,000
2015	APMS - Taxiway Pavement Preservation	Thin Asphalt Overlay/PFC TWBAV 10	\$202,748	\$22,527	\$0	\$225,275
2015	Guidance Signage, Rehabilitate	Design and replace 50 twy and rwy incandescent guidance replacement signs with LED signage and replace 25 in-ground twy edge lights to increase safety.	\$463,500	\$51,500	\$0	\$515,000
2015	APMS - Runway Pavement Preservation	Thin Asphalt Overlay/PFC RW1230AV 10	\$845,048	\$93,894	\$0	\$938,942
2015	APMS - Runway Pavement Preservation	Thin Asphalt Overlay/PFC RW321AV 10	\$334,930	\$37,214	\$0	\$372,144
2016	Taxiways:Rehabilitate Taxiway - Reconstruct	Design Rehab. of Twys: B-parallel to Rwy 3/21; and Twy E-parallel to Rwy 12/30 on NE side. Total of 948,850 sf or approx. 21.8 acres.	\$3,800	\$3,799	\$77,401	\$85,000
2016	Taxiways:Rehabilitate Taxiway - Reconstruct	Constr. Rehab. of Open Tiedown, Helicopter & Terminal Aprons - (extg. aprons: Transient 446,314 sf; Open Tiedown 166,579 sf; Helicopter 267,600 sf adjacent Twy A and Terminal Aprons 777,000 sf).	\$116,220	\$116,220	\$2,367,560	\$2,600,000
2016	Other:Construct Aircraft Rescue & Fire Fighting Training Facility/Regional Burn Pit/Mobile Training Facility - Standards	Construct fire protection waterline from northern portion of airport looping (6,000 ft of 12 inch waterline) SW around Rwy 12/30 and connecting to existing well.	\$67,050	\$67,050	\$1,365,900	\$1,500,000
2016	Land:Acquire <Land/Easement> For Development/Relocation	Acquire Land - 202 acres; approx. 155 acres of land located within RPZ of Rwy 12 and 30, approx. 46 acres are located within RPZ of Rwy 3 and 21. 21504001T; 21504001S; 215100520; 21510051R.	\$227,970	\$227,970	\$4,644,060	\$5,100,000
2017	Planning:Conduct <Environmental Assessment/Environmental Impact Statement/Feasibility> <Study/Update>	EA Rwy 3-21 Extension - Produce constr. documents for the extension of Rwy 21 approach end approx. 500 ft. The rwy width will remain 75 ft.	\$6,705	\$6,705	\$136,590	\$150,000
2017	Taxiways:Rehabilitate Taxiway - Reconstruct	Rehab. Twys B and E - Complete rehab. constr. for Twys: B-parallel Rwy 3-21; and E-parallel Rwy 12-30 on northeast side.	\$73,755	\$73,755	\$1,502,490	\$1,650,000
2017	Terminal Development:Construct Terminal Building - Capacity	Constr. public use terminal (16,000 sf) on east side (includes space for an FBO, pilot facilities, public meeting rooms and airport administration offices).	\$312,900	\$312,900	\$6,374,200	\$7,000,000
2018	Taxiway, Rehabilitate	Constr. Rehab. of Twy C - Complete rehab. constr. for Twy C (50 ft x 2,000 ft). Complete constr. drawings will be produced during 2014.	\$765,000	\$85,000	\$0	\$850,000
2018	Planning:Conduct Noise Compatibility Plan Study/Update	Update Part 150 Noise Study.	\$13,410	\$13,410	\$273,180	\$300,000
2018	APMS - Taxiway Pavement Preservation	Crack Seal and Rubberized Asphalt Emulsion Seal Coat TWEAV 10	\$62,393	\$6,933	\$0	\$69,326

Airport Projects - by Airport

Airport Name - County

FY	Project Component	Project Description	State Share	Local Share	Federal Share	Project Total
MARANA RGNL - PIMA						
2018	APMS - Taxiway Pavement Preservation	Crack Seal and Rubberized Asphalt Emulsion Seal Coat TWCAV 10	\$42,111	\$4,679	\$0	\$46,790
2019	Apron:Construct Apron - Capacity	Constr. a bypass apron (504 ft x 188 ft) on the infield adjacent to the extg. bypass apron. Ph. 2	\$49,170	\$49,170	\$1,001,660	\$1,100,000
2019	Taxiways:Construct Taxiway - Capacity	Constr. Twy H - NW of Rwy 3-21 - Constr. a Twy H parallel to Rwy 3-21 approx. 50 ft x 4,400 ft.	\$143,040	\$143,040	\$2,913,920	\$3,200,000
2019	Runways:Extend Runway- Capacity	Design Rwy 3-21 Extension - Produce constr. documents for the extension of Rwy 3-21. The extension will extend the approach end of Rwy 21 approx. 500 ft. The Rwy width will remain 75 ft.	\$8,046	\$8,046	\$163,908	\$180,000
2019	Taxiways:Construct Taxiway - Capacity	Constr. section (50 ft x 1,300 ft) of Twy K on infield adjacent to extg. bypass apron.	\$62,580	\$62,580	\$1,274,840	\$1,400,000
Airport Total:			\$3,816,915	\$1,402,931	\$22,432,631	\$27,652,477
NOGALES INTL - SANTA CRUZ						
2015	Other:Improve Airport <Drainage/Erosion Control/Miscellaneous Improvements> - Standards	Erosion Mitigation - mass-grade eroded embankment, install geogrid, supply/install area drains and pipes.	\$67,050	\$67,050	\$1,365,900	\$1,500,000
2015	Land For Protection (Safety Areas), Acquire	Acquire 1.88 acres on southeast for future erosion control project and to mitigate private property encroachment on airport.	\$45,000	\$5,000	\$0	\$50,000
2015	Apron:Rehabilitate Apron - Reconstruction	Reconstr. of 2,225 sy of PCC apron and 19,300 SY of AC apron	\$86,807	\$86,808	\$1,768,385	\$1,942,000
2016	APMS - Apron Pavement Preservation	Thin Asphalt Overlay/PFC A01NG 10	\$188,911	\$20,990	\$0	\$209,901
2016	APMS - Runway Pavement Preservation	Crack Seal and Rubberized Asphalt Emulsion Seal Coat RW321NG 10	\$254,573	\$28,286	\$0	\$282,859
2016	Land:Acquire Land/Easement For Approaches	Land acquisition for RSA on Rwy 21 and private property encroachment within airport.	\$8,940	\$8,940	\$182,120	\$200,000
2016	Apron:Rehabilitate Apron - Reconstruction	Reconstr. 17,800 sy of T-hangar apron and terminal apron connectors.	\$9,834	\$9,834	\$200,332	\$220,000
2017	Planning:Conduct <Environmental Assessment/Environmental Impact Statement/Feasibility> <Study/Update>	EA for a future perimeter service road.	\$6,705	\$6,705	\$136,590	\$150,000
2017	Other:<Light/Mark/Remove> Obstructions - Standards	Remove mesquites encroaching in RSA and OFA primarily to the south of rwy.	\$2,235	\$2,235	\$45,530	\$50,000
2017	Other:<Construct/Improve/Repair> <Fuel Farm/Utilities> [MAP] - Other	Design and constr. new fuel farm at same location as extg. one. Same capacity with upgraded equipment to meet current fuel farm standards. No state participation.	\$8,940	\$8,940	\$182,120	\$200,000
2018	Perimeter/Service Road, Construct (New)	Design perimeter road.	\$253,800	\$28,200	\$0	\$282,000
2018	Apron, Construct (New)	Design expansion of approx. 3,300 sy of terminal apron.	\$41,580	\$4,620	\$0	\$46,200

Airport Projects - by Airport

Airport Name - County

FY	Project Component	Project Description	State Share	Local Share	Federal Share	Project Total
NOGALES INTL - SANTA CRUZ						
2018	Runways:Install Runway <Vertical/Visual> Guidance System [PAPI/VASI/REIL/ALS/etc.] - Standards	Install REILs on Runway 3-21.	\$2,235	\$2,235	\$45,530	\$50,000
2019	Apron:Expand Apron - Capacity	Add 3,300 sy of transient AC apron capacity adjacent to the terminal.	\$13,768	\$13,767	\$280,465	\$308,000
2019	Ground Transportation:<Construct/Expand/Improve/Modify/Rehabilitate> Service Road - Other	Constr. perimeter service road on airport (49,450 sy).	\$84,036	\$84,036	\$1,711,928	\$1,880,000
Airport Total:			\$1,074,414	\$377,646	\$5,918,900	\$7,370,960

PAGE MUNI - COCONINO

2015	Runway MIRL/HIRL, Install	Design Airfield electrical upgrades. Replace edge lights on Rwy 15-33 (6,250 ft x 150 ft); & Twy A & connectors (7,850 lf). Replace approximately 41 guidance signs & 4 distance remaining signs with LED fixtures.	\$45,000	\$5,000	\$0	\$50,000
2015	Runways:Install Runway Lighting (HIRL, MIRL, TDZ, LAHSO Or CL) - Standards	Construct Airfield electrical upgrades. Replace edge lights on Rwy 15-33 (6,250 ft x 150 ft); & Twy A & connectors (7,850 lf). Replace approximately 41 guidance signs & 4 distance remaining signs with LED fixtures.	\$20,115	\$20,115	\$409,770	\$450,000
2015	Taxiways:Construct Taxiway - Capacity	Construct Twy from North Ramp to Rwy 7 End (approximately 695 ft x 35 ft).	\$22,350	\$22,350	\$455,300	\$500,000
2016	Apron:Construct Apron - Capacity	Design Northwest Taxilane (approximately 2,200 ft x 35 ft).	\$4,470	\$4,470	\$91,060	\$100,000
2016	APMS - Runway Pavement Preservation	Thin Asphalt Overlay/PFC RW1533PM 10	\$1,020,950	\$113,439	\$0	\$1,134,389
2017	Apron:Construct Apron - Capacity	Construct Northwest Taxilane (approximately 2,200 ft x 35 ft).	\$44,700	\$44,700	\$910,600	\$1,000,000
2018	APMS - Taxiway Pavement Preservation	Crack Seal and Rubberized Asphalt Emulsion Seal Coat TWAPM 20	\$12,797	\$1,422	\$0	\$14,219
2018	Taxiways:Construct Taxiway [Includes Relocation]	Design Twy A2 relocation (approximately 210 ft x 40 ft).	\$2,682	\$2,682	\$54,636	\$60,000
2018	Apron:Rehabilitate Apron - Reconstruction	Design apron pavement rehabilitation (main apron, approximately 38,700 sy).	\$4,470	\$4,470	\$91,060	\$100,000
2018	APMS - Runway Pavement Preservation	Crack Seal and Rubberized Asphalt Emulsion Seal Coat RW725PM 10	\$57,543	\$6,394	\$0	\$63,937
2018	APMS - Taxiway Pavement Preservation	Crack Seal and Rubberized Asphalt Emulsion Seal Coat TWAPM 10	\$99,629	\$11,070	\$0	\$110,699
2019	Taxiway, Construct (New)	Construct Twy A2 relocation (approximately 210 ft x 40 ft).	\$270,000	\$30,000	\$0	\$300,000
2019	Apron:Rehabilitate Apron - Reconstruction	Construct apron pavement rehabilitation (main apron, approximately 38,700 sy).	\$89,400	\$89,400	\$1,821,200	\$2,000,000

Airport Projects - by Airport

Airport Name - County

FY Project Component

Project Description

State Share

Local Share

Federal Share

Project Total

PAGE MUNI - COCONINO

			Airport Total:	\$1,694,106	\$355,512	\$3,833,626	\$5,883,244
PAYSON - GILA							
2015	Airport Drainage, Improve	Evaluate and repair Twy A1 and A2 infield drainage.	\$135,000	\$15,000	\$0	\$150,000	
2015	Apron:Expand Apron - Capacity	Construct expansion of Echo apron (250 ft x 160 ft) and twy connector (35 ft x 130 ft).	\$26,820	\$26,820	\$546,360	\$600,000	
2016	Taxiways:Construct Taxiway - Capacity	Construct run-up areas/hold bays and install noise abatement and density altitude signage.	\$24,585	\$24,585	\$500,830	\$550,000	
2016	Wildlife Deterrent Fencing, Install (New)	Construct wildlife deterrent fencing (approximately 790 lf).	\$67,500	\$7,500	\$0	\$75,000	
2016	APMS - Taxiway Pavement Preservation	Mill and Replace PFC TWAPY 10	\$571,152	\$63,461	\$0	\$634,613	
2017	Taxiways:Install Taxiway Lighting (e.g., SMGCS, Reflectors, MITL) - Standards	Install twy edge lighting and Rwy 6 PAPI's.	\$15,645	\$15,645	\$318,710	\$350,000	
2017	APMS - Apron Pavement Preservation	Crack Seal and Rubberized Asphalt Emulsion Seal Coat A01PY 10	\$37,846	\$4,205	\$0	\$42,051	
2018	Buildings:<Construct/Expand/Imp/Modify/Rehabilitate> <Snow Removal Equipment/Chemical Storage Building/etc.> - Standards	Construct a SRE building (30 ft x 40 ft).	\$15,645	\$15,645	\$318,710	\$350,000	
2019	Equipment:Acquire <Snow Removal Equipment/Urea Truck/etc.> - Standards	Acquire a dump truck with plow and truck mounted sweeper.	\$7,599	\$7,599	\$154,802	\$170,000	
			Airport Total:	\$901,792	\$180,460	\$1,839,412	\$2,921,664

PHOENIX DEER VALLEY - MARICOPA

2015	Apron:Expand Apron - Capacity	Construct aircraft run-up area at the ends of Rwy 7R/25L. Each area is approximately 13,500 sy for a total of 27,000 sy.	\$112,197	\$112,197	\$2,285,606	\$2,510,000
2015	Taxiways:Construct Taxiway - Capacity	Construct acute angle Twy connectors A6 and A7. Relocate guard lights.	\$76,884	\$76,884	\$1,566,232	\$1,720,000
2016	Apron:Rehabilitate Apron - Reconstruction	Reconstruct North Ramp (approximately 133,100 sy) - Phase I.	\$215,901	\$215,901	\$4,398,198	\$4,830,000
2017	Apron:Rehabilitate Apron - Reconstruction	Reconstruct North Ramp (approximately 108,200 sy) - Phase II.	\$175,671	\$175,671	\$3,578,658	\$3,930,000
2018	Apron, Rehabilitate	Reconstruct Southwest Ramp pavement (approximately 30 Acres).	\$1,350,000	\$150,000	\$0	\$1,500,000
2018	APMS - Taxiway Pavement Preservation	Crack Seal and Rubberized Asphalt Emulsion Seal Coat R07R 1	\$33,043	\$3,671	\$0	\$36,714
2018	Taxiways:Construct Taxiway [Includes Relocation]	Relocate Twy B to the south (approximately 5,300 ft x 40 ft).	\$236,910	\$236,910	\$4,826,180	\$5,300,000
2018	Taxiways:Construct Taxiway - Capacity	Construct acute angle Twy connectors B6 and B7. Relocate guard lights.	\$76,884	\$76,884	\$1,566,232	\$1,720,000
2019	Apron, Rehabilitate	Reconstruct Southeast Ramp pavement (approximately 30 acres).	\$1,010,000	\$490,000	\$0	\$1,500,000

Airport Projects - by Airport

Airport Name - County

FY	Project Component	Project Description	State Share	Local Share	Federal Share	Project Total
PHOENIX DEER VALLEY - MARICOPA						
2019	Runways:Rehabilitate Runway - Reconstruct	Rehabilitate Rwy 7R/25L (approximately 8,200 ft x 100 ft).	\$178,800	\$178,800	\$3,642,400	\$4,000,000
2019	Taxiway, Rehabilitate	Rehabilitate Twy C (approximately 8,200 ft x 40 ft).	\$1,080,000	\$120,000	\$0	\$1,200,000
Airport Total:			\$4,546,290	\$1,836,918	\$21,863,506	\$28,246,714
PHOENIX GOODYEAR - MARICOPA						
2015	Obstructions, Light/Mark/Remove (Safety Areas)	Shift Rwy 3/21 300 ft to the southwest providing RSA standards on both ends. Remove the displaced threshold for Rwy 21.	\$1,980,000	\$220,000	\$0	\$2,200,000
2015	Apron:Rehabilitate Apron - Reconstruction	Rehabilitate apron pavement (approximately 155,600 sy of asphalt pavement).	\$138,570	\$138,570	\$2,822,860	\$3,100,000
2015	Taxiways:Construct Taxiway - Capacity	Construct west parallel Twy B and exits (8,500 ft x 75 ft) - Phase I.	\$160,920	\$160,920	\$3,278,160	\$3,600,000
2016	Land For Protection (Safety Areas), Acquire	Airport land acquisition in RPZ (approximately 63 acres).	\$1,980,000	\$220,000	\$0	\$2,200,000
2016	Apron:Rehabilitate Apron - Reconstruction	Rehabilitate Apron Pavement - Phase I (approximately 60,000 sy of concrete pavement).	\$281,610	\$281,610	\$5,736,780	\$6,300,000
2016	Taxiways:Construct Taxiway - Capacity	Construct west parallel Twy B and exits (8,500 ft x 75 ft) - Phase II.	\$160,920	\$160,920	\$3,278,160	\$3,600,000
2017	Apron:Rehabilitate Apron - Reconstruction	Rehabilitate Apron Pavement - Phase II (approximately 60,000 sy of concrete pavement).	\$281,610	\$281,610	\$5,736,780	\$6,300,000
2017	Perimeter/Service Road, Rehabilitate	Reconstruct airport perimeter roadway (approximately 24,800 ft x 23 ft) - Phase I.	\$1,800,000	\$200,000	\$0	\$2,000,000
2017	APMS - Apron Pavement Preservation	Crack Seal and Rubberized Asphalt Emulsion Seal CoatTA3 4	\$706	\$79	\$0	\$785
2017	APMS - Apron Pavement Preservation	Crack Seal and Rubberized Asphalt Emulsion Seal Coat TA7 2	\$862	\$96	\$0	\$958
2017	APMS - Apron Pavement Preservation	Crack Seal and Rubberized Asphalt Emulsion Seal Coat TA4 3	\$497	\$55	\$0	\$552
2017	APMS - Apron Pavement Preservation	Crack Seal and Rubberized Asphalt Emulsion Seal Coat TA4 1	\$845	\$94	\$0	\$939
2017	Ground Transportation:<Construct/Expand/Improve/Modify/Rehabilitate> Access Road - Capacity	Reconstruct public access road from Litchfield Road to the terminal building complex (approximately 2,700 ft x 24 ft).	\$50,600	\$50,601	\$1,030,799	\$1,132,000
2017	APMS - Apron Pavement Preservation	Crack Seal and Rubberized Asphalt Emulsion Seal Coat TA4 2	\$2,182	\$242	\$0	\$2,424
2017	APMS - Apron Pavement Preservation	Crack Seal and Rubberized Asphalt Emulsion Seal Coat TA3 3	\$1,003	\$111	\$0	\$1,114
2017	APMS - Apron Pavement Preservation	Crack Seal and Rubberized Asphalt Emulsion Seal Coat TA 04a	\$27,211	\$3,023	\$0	\$30,234
2017	APMS - Apron Pavement Preservation	Crack Seal and Rubberized Asphalt Emulsion Seal Coat TA 02c	\$3,373	\$375	\$0	\$3,748

Airport Projects - by Airport

Airport Name - County

FY	Project Component	Project Description	State Share	Local Share	Federal Share	Project Total
PHOENIX GOODYEAR - MARICOPA						
2017	APMS - Apron Pavement Preservation	Crack Seal and Rubberized Asphalt Emulsion Seal Coat TA 02b	\$7,736	\$860	\$0	\$8,596
2017	Taxiways:Construct Taxiway - Capacity	Construct west parallel Twy B and exits (8,500 ft x 75 ft) - Phase III.	\$312,900	\$312,900	\$6,374,200	\$7,000,000
2017	APMS - Apron Pavement Preservation	Crack Seal and Rubberized Asphalt Emulsion Seal Coat TA 06b	\$16,394	\$1,822	\$0	\$18,216
2017	APMS - Apron Pavement Preservation	Crack Seal and Rubberized Asphalt Emulsion Seal Coat TA3 7	\$2,088	\$232	\$0	\$2,320
2017	APMS - Apron Pavement Preservation	Crack Seal and Rubberized Asphalt Emulsion Seal Coat TA 04b	\$69,677	\$7,742	\$0	\$77,419
2017	APMS - Apron Pavement Preservation	Crack Seal and Rubberized Asphalt Emulsion Seal Coat TA7 1	\$1,081	\$120	\$0	\$1,201
2017	APMS - Apron Pavement Preservation	Crack Seal and Rubberized Asphalt Emulsion Seal Coat TA 5	\$4,468	\$496	\$0	\$4,964
2017	APMS - Apron Pavement Preservation	Crack Seal and Rubberized Asphalt Emulsion Seal Coat TA3 1	\$2,732	\$304	\$0	\$3,036
2017	APMS - Apron Pavement Preservation	Crack Seal and Rubberized Asphalt Emulsion Seal Coat TA3 5	\$2,580	\$287	\$0	\$2,867
2017	APMS - Apron Pavement Preservation	Crack Seal and Rubberized Asphalt Emulsion Seal Coat TA3 2	\$4,351	\$483	\$0	\$4,834
2017	APMS - Apron Pavement Preservation	Crack Seal and Rubberized Asphalt Emulsion Seal Coat TA 06a	\$8,799	\$978	\$0	\$9,777
2017	APMS - Apron Pavement Preservation	Crack Seal and Rubberized Asphalt Emulsion Seal Coat TA 06c	\$10,061	\$1,118	\$0	\$11,179
2017	APMS - Apron Pavement Preservation	Crack Seal and Rubberized Asphalt Emulsion Seal Coat TA 3	\$13,238	\$1,471	\$0	\$14,709
2017	APMS - Apron Pavement Preservation	Crack Seal and Rubberized Asphalt Emulsion Seal Coat TA3 6	\$442	\$49	\$0	\$491
2017	APMS - Apron Pavement Preservation	Crack Seal and Rubberized Asphalt Emulsion Seal Coat TA3 7	\$706	\$79	\$0	\$785
2017	APMS - Apron Pavement Preservation	Crack Seal and Rubberized Asphalt Emulsion Seal Coat TA 04c	\$30,863	\$3,429	\$0	\$34,292
2018	Taxiways:Construct Taxiway - Capacity	Construct west parallel Twy B and exits (8,500 ft x 75 ft) - Phase IV.	\$254,790	\$254,790	\$5,190,420	\$5,700,000
2018	Taxiways:<Extend/Widen/Strengthen> Taxiway - Standards	Strengthen Twy A to be compliant with the airport reference code D-4 standards (approximately 6,000 ft x 75 ft).	\$133,876	\$133,877	\$2,727,247	\$2,995,000
2018	Apron:Rehabilitate Apron - Reconstruction	Rehabilitate apron pavement - Phase III (approximately 60,000 sy of concrete pavement).	\$281,610	\$281,610	\$5,736,780	\$6,300,000
2018	Airport Drainage, Improve	Constrect infield pavement in the vicinity of Twy Connectors A2, A3, and A8.	\$638,100	\$70,900	\$0	\$709,000
2019	Apron:Construct Apron - Capacity	Construct new apron on the west side of the airport to accommodate new development areas and support Twy B.	\$174,330	\$174,330	\$3,551,340	\$3,900,000

Airport Projects - by Airport

Airport Name - County
FY Project Component

Project Description

State Share

Local Share

Federal Share

Project Total

PHOENIX GOODYEAR - MARICOPA

Airport Total: \$8,841,731 \$2,966,183 \$45,463,526 \$57,271,440

PHOENIX SKY HARBOR INTL - MARICOPA

2015	Taxiway, Rehabilitate	Reconstruct Twy Connector F8 (approximately 2,000 sy).	\$20,000	\$1,702,000	\$0	\$1,722,000
2015	Apron:Rehabilitate Apron - Reconstruction	Reconstruct Terminal 4 Apron - Phase III (approximately 48,000 sy).	\$1,505,250	\$1,505,250	\$9,031,500	\$12,042,000
2015	Airport Drainage, Improve	Upgrade airfield utility access points, pave adjacent infields and construct new airfield sign bases and conduit at locations that meet Airport Design Standards - Phase I.	\$2,070,000	\$230,000	\$0	\$2,300,000
2015	Planning:<Conduct/Update> <Airport Master Plan Study {ALP, EA, etc.}>	Develop a new Airport Master Plan.	\$734,375	\$734,375	\$4,406,250	\$5,875,000
2015	Planning:<Conduct/Update> (e.g., Pavement Maintenance Plan, PCI, NPDES, etc.)	Inspect airfield pavement surfaces, provide report of current conditions, and provide pavement management program for the area inspected.	\$45,000	\$45,000	\$270,000	\$360,000
2015	Other:Environmental Mitigation	In order to increase energy efficiency at the airport, various energy efficiency projects will be included: heating and cooling improvements, base load, back-up power, and power for on-road airport vehicles and ground support equipment.	\$625,000	\$625,000	\$3,750,000	\$5,000,000
2016	Other:Environmental Mitigation	In order to increase energy efficiency at the airport, various energy efficiency projects will be included: heating and cooling improvements, base load, back-up power, and power for on-road airport vehicles and ground support equipment.	\$625,000	\$625,000	\$3,750,000	\$5,000,000
2016	Airport Drainage, Improve	Upgrade airfield utility access points, pave adjacent infields and construct new airfield sign bases and conduit at locations that meet Airport Design Standards - Phase II.	\$2,070,000	\$230,000	\$0	\$2,300,000
2016	Apron:Rehabilitate Apron - Reconstruction	Reconstruct West Air Cargo Apron (approximately 67,830 sy).	\$644,250	\$644,250	\$3,865,500	\$5,154,000
2016	Taxiways:Rehabilitate Taxiway Lighting - Reconstruct	Replace old airfield Twy and Rwy edge lights, transformers, guard lights and lead-in lights and convert to LED. Upgrade controls.	\$500,000	\$500,000	\$3,000,000	\$4,000,000
2016	Apron:Rehabilitate Apron - Reconstruction	Reconstruct Terminal 4 Apron - Phase IV (approximately 48,000 sy).	\$1,505,250	\$1,505,250	\$9,031,500	\$12,042,000
2017	Apron:Rehabilitate Apron - Reconstruction	Reconstruct Terminal 4 Apron - Phase V (approximately 48,000 sy).	\$1,505,250	\$1,505,250	\$9,031,500	\$12,042,000
2017	Other:Environmental Mitigation	In order to increase energy efficiency at the airport, various energy efficiency projects will be included: heating and cooling improvements, base load, back-up power, and power for on-road airport vehicles and ground support equipment.	\$625,000	\$625,000	\$3,750,000	\$5,000,000

Airport Projects - by Airport

Airport Name - County

<i>FY</i>	<i>Project Component</i>	<i>Project Description</i>	<i>State Share</i>	<i>Local Share</i>	<i>Federal Share</i>	<i>Project Total</i>
PHOENIX SKY HARBOR INTL - MARICOPA						
2017	Apron:Expand Apron - Capacity	Construct South Air Cargo apron (approximately 52,000 sy).	\$1,667,750	\$1,667,750	\$10,006,500	\$13,342,000
2017	Apron:Rehabilitate Apron - Reconstruction	Reconstruct T3 South Transition apron (Apron east of T3 South Concourse, approximately 20,000 sy).	\$375,000	\$375,000	\$2,250,000	\$3,000,000
2017	Airport Drainage, Improve	Upgrade airfield utility access points, pave adjacent infields and construct new airfield sign bases and conduit at locations that meet Airport Design Standards - Phase III.	\$2,070,000	\$230,000	\$0	\$2,300,000
2018	Airport Drainage, Improve	Upgrade airfield utility access points, pave adjacent infields and construct new airfield sign bases and conduit at locations that meet Airport Design Standards - Phase IV.	\$2,070,000	\$230,000	\$0	\$2,300,000
2018	Other:Environmental Mitigation	In order to increase energy efficiency at the airport, various energy efficiency projects will be included: heating and cooling improvements, base load, back-up power, and power for on-road airport vehicles and ground support equipment.	\$625,000	\$625,000	\$3,750,000	\$5,000,000
2018	Planning:<Conduct/Update> (e.g., Pavement Maintenance Plan, PCI, NPDES, etc.)	Inspect airfield pavement surfaces, provide report of current conditions, and provide pavement management program for the area inspected.	\$45,000	\$45,000	\$270,000	\$360,000
2018	Taxiways:Construct Taxiway - Capacity	Construction of new Crossfield Twy V - Phase I.	\$1,875,000	\$1,875,000	\$11,250,000	\$15,000,000
2018	Planning:Conduct Noise Compatibility Plan Study/Update	Conduct FAR Part 150 Study.	\$187,500	\$187,500	\$1,125,000	\$1,500,000
2019	Airport Drainage, Improve	Upgrade airfield utility access points, pave adjacent infields and construct new airfield sign bases and conduit at locations that meet Airport Design Standards - Phase V.	\$2,070,000	\$230,000	\$0	\$2,300,000
2019	Taxiways:Construct Taxiway - Capacity	Construction of new Crossfield Twy V - Phase II.	\$1,875,000	\$1,875,000	\$11,250,000	\$15,000,000
2019	Other:Environmental Mitigation	In order to increase energy efficiency at the airport, various energy efficiency projects will be included: heating and cooling improvements, base load, back-up power, and power for on-road airport vehicles and ground support equipment.	\$625,000	\$625,000	\$3,750,000	\$5,000,000
2019	Apron:Rehabilitate Apron - Reconstruction	Reconstruct Terminal 2 apron (existing concourse building envelope is 9,250 sy).	\$265,875	\$265,875	\$1,595,250	\$2,127,000
2019	Apron:Rehabilitate Apron - Reconstruction	Reconstruct Northwest Apron (north of Twy A between A3 and A4, approximately 40,000 sy).	\$625,000	\$625,000	\$3,750,000	\$5,000,000
Airport Total:			\$26,850,500	\$19,332,500	\$98,883,000	\$145,066,000

Airport Projects - by Airport

Airport Name - County

<i>FY</i>	<i>Project Component</i>	<i>Project Description</i>	<i>State Share</i>	<i>Local Share</i>	<i>Federal Share</i>	<i>Project Total</i>
PHOENIX-MESA GATEWAY - MARICOPA						
2015	APMS - Runway Pavement Preservation	Thin Asphalt Overlay/PFC RW12C30CWG 20	\$1,019,293	\$113,255	\$0	\$1,132,548
2015	Airport Drainage, Improve	Relocation of the Ellsworth Channel and its point of confluence with the Powerline Floodway is required for the Northeast Area Development. The proposed realignment will generally be located on Airport property.	\$630,000	\$70,000	\$0	\$700,000
2015	Apron:Rehabilitate Apron - Reconstruction	North Apron Ph.1 Recon./Rehab. sections 2,600 ft x 300 ft. Includes lighting, drainage, signage and markings.	\$210,090	\$210,090	\$4,279,820	\$4,700,000
2015	Taxiways:Rehabilitate Taxiway - Reconstruct	Design/Recon. Twy G at Twy B Hammerhead, adjacent to Rwy 12R to Twy Y, approx. 500 ft x 150 ft (10,000 sy PCC) plus 7,000 sy ACP for twy shoulders including lighting, drainage, signage and marking.	\$60,718	\$60,718	\$1,236,908	\$1,358,344
2015	Land:Acquire Miscellaneous Land {Describe, e.g., Land For Outer Marker, Relocate Road}	Land Acquisition/ASR Relocation following site study underway. Current ASR-8 location is in the footprint of the Eastside Terminal Development Area and must be relocated.	\$146,395	\$146,394	\$2,982,261	\$3,275,050
2015	Runways:Rehabilitate Runway - Reconstruct	Design/Recon. 1,000 ft x 150 ft to approach end of Rwy 30C, with 35 ft rwy shoulders, including lighting, drainage, signage and marking.	\$122,123	\$122,123	\$2,487,814	\$2,732,060
2015	Runways:Rehabilitate Runway - Reconstruct	Design/Recon. 1,000 ft. of Rwy 12R Threshold. 1,000 ft x 150 ft to approach end of Rwy 12R, with 35 ft rwy shoulders, including lighting, drainage, marking & signage.	\$122,567	\$122,568	\$2,496,865	\$2,742,000
2015	Planning:Conduct Noise Compatibility Plan Study/Update	Update FAR Part 150 Study.	\$25,702	\$25,703	\$523,595	\$575,000
2015	Taxiways:Extend Taxiway - Capacity	Twy L Extension Ph. 2 constr. from Twy A into South Tract Twy L is 2,600 ft x 75 ft plus 35 ft shoulders. Includes lighting, drainage, signage and marking. Also Twy A to allow for radius connections.	\$259,260	\$259,260	\$5,281,480	\$5,800,000
2015	Apron:Expand Apron - Capacity	Constr. of Alpha Apron Ph.3 to the northwest (approx. 28,800 sy of PCC). Dimensions 480 ft x 500 ft.	\$187,740	\$187,740	\$3,824,520	\$4,200,000
2016	Taxiways:Rehabilitate Taxiway - Reconstruct	Recon. Twy A between Twy N to Twy L 2,100 ft x 75 ft with 35 ft twy shoulders. Includes lighting, drainage, signage and marking.	\$145,275	\$145,275	\$2,959,450	\$3,250,000
2016	Apron:Construct Apron - Capacity	Design through Ph. 1 constr. documents, apron (1 million sf), utilities, roadways, drainage, lighting and signage for East Side Terminal Area.	\$273,788	\$273,787	\$5,577,425	\$6,125,000
2016	Apron:Rehabilitate Apron - Reconstruction	North GA Apron Pavement Recon., approx. area 927 ft x 313 ft (32,087 sy of PCC)Ph 2.	\$156,450	\$156,450	\$3,187,100	\$3,500,000
2016	Taxiways:<Extend/Widen/Strengthen> Taxiway - Standards	Constr. Twy C Ph. 2 from Twy J to Twy L extension 3,000 ft x 75 ft with 35 ft twy shoulders, including lighting, drainage, signage and marking.	\$277,449	\$277,449	\$5,652,019	\$6,206,917

Airport Projects - by Airport

Airport Name - County

FY	Project Component	Project Description	State Share	Local Share	Federal Share	Project Total
PHOENIX-MESA GATEWAY - MARICOPA						
2017	Apron:Construct Apron - Capacity	Constr. East Side Terminal Area infrastructure per AMP. Gateway 2030 Ph. 1 costs show approx. \$2M for site work and infrastructure, and approx. \$31M for roadways.	\$1,497,399	\$1,497,400	\$30,504,066	\$33,498,865
2017	Taxiways:Extend Taxiway - Capacity	Constr. Twy C Ph. 3 from Twy L to Twy P 4,100 ft x 75 ft with 35 ft twy shoulders including lighting, drainage, signage and marking.	\$380,001	\$380,000	\$7,741,134	\$8,501,135
2017	Airport Drainage, Improve	Design/Constr. Rwy Ph. 2 airfield drainage improvements between Rwy 12R/30L and 12C/30C south of Twy K.	\$1,350,000	\$150,000	\$0	\$1,500,000
2018	Other:<Construct/Improve/Repair> <Fuel Farm/Utilities> [MAP] - Other	Constr. Ph. 1 and Ph. 2 of AC runup area to accommodate Group III AC for engine maintenance runs. Area is 260 ft x 390 ft, may include jet blast fence or other means of safety and sound suppression.	\$162,038	\$162,037	\$3,300,925	\$3,625,000
2018	Apron:Construct Apron - Capacity	Constr. East Terminal Area Apron, approx. 1 million sf. Includes lighting, drainage, signage and markings.	\$1,117,500	\$1,117,500	\$22,765,000	\$25,000,000
2018	Airport Drainage, Improve	Design/Constr. detention basin to ultimate size to accommodate drainage requirements in the airport's south industrial area.	\$1,620,000	\$180,000	\$0	\$1,800,000
2018	Taxiway, Construct (New)	Design Only: Twy L Extension Ph. 3 between 30L and 30C. The twy is 75 ft x 1,500 ft (12,500 sy PCC), plus 35 ft shoulders x 1,500 lf (12,000 sy ACP) including drainage and lighting.	\$360,000	\$40,000	\$0	\$400,000
2019	Taxiways:Extend Taxiway - Capacity	Constr. Twy L Extension Ph. 3 between 30L and 30C. The twy is 75 ft x 1,500 ft (12,500 sy PCC), plus 35 ft shoulders x 1,500 lf (12,000 sy ACP) including drainage and lighting.	\$160,920	\$160,920	\$3,278,160	\$3,600,000
2019	Taxiways:Rehabilitate Taxiway - Reconstruct	Twy H between Twy B and Rwy 12R Design/Recon. 400 ft x 75 ft (3,500 sy PCC), plus 400 ft x 35 ft shoulders (3,000 sy ACP), including lighting, drainage, signage, and marking.	\$49,518	\$49,517	\$1,008,741	\$1,107,776
2019	Terminal Development:Construct Terminal Building - Capacity	Design/Constr. East Terminal Building Ph.1 approx. 300,000 sf.	\$7,777,800	\$7,777,800	\$158,444,400	\$174,000,000
2019	Taxiway, Rehabilitate	Design/Recon. A section of Twy W located north of Twy W/Twy T intersection, 22 ft x 405 ft.	\$1,027,800	\$114,200	\$0	\$1,142,000
Airport Total:			\$19,139,826	\$13,800,186	\$267,531,683	\$300,471,695

Airport Projects - by Airport

Airport Name - County

FY	Project Component	Project Description	State Share	Local Share	Federal Share	Project Total
PINAL AIRPARK - PINAL						
2015	APMS - Taxiway Pavement Preservation	Thin Asphalt Overlay/PFC TWAPA 10	\$558,802	\$62,089	\$0	\$620,891
2015	Runways:Rehabilitate Runway - Reconstruct	Constr. Rwy 12/30 Rehab. Approx. 6,849 ft x 150 ft. Use rehab. method per design. Paint and Mark Rwy.	\$109,515	\$109,515	\$2,230,970	\$2,450,000
Airport Total:			\$668,317	\$171,604	\$2,230,970	\$3,070,891
POLACCA - NAVAJO						
2015	Equipment:Acquire Security Equipment/Install Perimeter Fencing [Not Part 107] - Standards	Install perimeter fencing (approx. 15,300 lf) and associated gates.	\$22,350	\$22,350	\$455,300	\$500,000
2015	Runways:Construct Runway [Includes Relocation] - Standards	Design Rwy 3/21 (5,000 ft x 75 ft).	\$13,410	\$13,410	\$273,180	\$300,000
2016	Runways:Construct Runway [Includes Relocation] - Standards	Constr. Rwy 3/21 (5,000 ft x 75 ft).	\$134,100	\$134,100	\$2,731,800	\$3,000,000
2017	Apron:Construct Apron - Capacity	Design/Constr. apron (11,520 sy) and Twy A3 (300 ft x 35 ft).	\$44,700	\$44,700	\$910,600	\$1,000,000
2018	Buildings:<Construct/Expand/Imp/Modify/Rehabilitate> <Snow Removal Equipment/Chemical Storage Building/etc.> - Standards	Design/Constr. SRE Building (40 ft x 50 ft).	\$15,645	\$15,645	\$318,710	\$350,000
2019	Taxiways:Construct Taxiway - Capacity	Design/Constr. bypass twys w/ edge lighting at each end of the Rwy 3/21 (300 ft x 35 ft).	\$31,290	\$31,290	\$637,420	\$700,000
Airport Total:			\$261,495	\$261,495	\$5,327,010	\$5,850,000
RYAN FIELD - PIMA						
2015	Equipment:Acquire Security Equipment/Install Perimeter Fencing [Not Part 107] - Standards	Phase 3 of construction of installing roadway crossings with concrete drainage crossings at 3 storm water discharge locations and 6 ft chain link with 3-strand barbed wire fencing along Ajo Highway that discharge onto the airfield.	\$37,076	\$37,077	\$755,297	\$829,450
2015	APMS - Taxiway Pavement Preservation	Thin Asphalt Overlay/PFC TWDRY 20	\$198,968	\$22,108	\$0	\$221,076
2015	APMS - Taxiway Pavement Preservation	Thin Asphalt Overlay/PFC TWBRY 20	\$364,830	\$40,537	\$0	\$405,367
2016	Airport Drainage, Improve	Design an earth dike (approximately 3,500 lf) and adjacent drainage channel in accordance with FEMA standards.	\$166,500	\$18,500	\$0	\$185,000
2016	Other:Improve Airport <Drainage/Erosion Control/Miscellaneous Improvements> - Standards	Construct an earth dike (approximately 3,500 lf) and adjacent drainage channel in accordance with FEMA standards.	\$108,605	\$108,605	\$2,212,432	\$2,429,642
2017	Land:Acquire Land/Easement For Approaches	Acquisition of 79.8 acres of land for Rwy 15 RPZ.	\$35,554	\$35,555	\$724,291	\$795,400
2018	Planning:<Conduct/Update> <Airport Master Plan Study {ALP, EA, etc.}>	Master Plan Update (includes: forecasts, development alternatives and financial plans). Also includes preparation of strategic plan, security assessment and AGIS.	\$33,525	\$33,525	\$682,950	\$750,000

Airport Projects - by Airport

Airport Name - County

<i>FY</i>	<i>Project Component</i>	<i>Project Description</i>	<i>State Share</i>	<i>Local Share</i>	<i>Federal Share</i>	<i>Project Total</i>
RYAN FIELD - PIMA						
2019	Apron:Construct Apron - Capacity	Construct new asphalt parking apron (approximately 15,000 sy) on the West side at the end of East Access Road. Project includes grading, drainage, paving, striping, area lighting, utilities and appurtenances.	\$69,267	\$69,267	\$1,411,066	\$1,549,600
Airport Total:			\$1,014,325	\$365,174	\$5,786,036	\$7,165,535
SAFFORD RGNL - GRAHAM						
2015	APMS - Runway Pavement Preservation	Mill and Replace PFC RW826SF 10	\$675,868	\$75,097	\$0	\$750,965
2015	Runways:Rehabilitate Runway - Reconstruct	Constr. Rwy 8/26 Recon. (4,800 ft x 75 ft), Remove Twy A2, and Sealcoat and Correct Rwy 12/30 Markings	\$109,515	\$109,515	\$2,230,970	\$2,450,000
2015	Runway MIRL/HIRL, Install	Design Only - Replace Rwy 12/30 Lighting, Signage, and Hold Markings	\$45,000	\$5,000	\$0	\$50,000
2015	Buildings:<Construct/Expand/Improve/Modify/Rehabilitate> Building - Standards	Design Only - Abandoned Office Building Demolition (near terminal building)	\$894	\$894	\$18,212	\$20,000
2016	Runways:Install Runway Lighting (HIRL, MIRL, TDZ, LAHSO Or CL) - Standards	Constr. - Replace Rwy 12/30 Lighting, Signage, and Hold Markings	\$26,820	\$26,820	\$546,360	\$600,000
2016	Planning:Conduct <Environmental Assessment/Environmental Impact Statement/Feasibility> <Study/Update>	Conduct an EA for a Land Acquisition for Rwy 12/30 RPZs	\$6,705	\$6,705	\$136,590	\$150,000
2016	Buildings:<Construct/Expand/Improve/Modify/Rehabilitate> Building - Standards	Constr. - Abandoned Office Building Demolition (near terminal building)	\$2,906	\$2,905	\$59,189	\$65,000
2017	Other:<Light/Mark/Remove> Obstructions - Standards	Design - Removal of FAR Part 77 Obstructions (vegetation) and Lighting for Rwy 12 Road Obstruction	\$894	\$894	\$18,212	\$20,000
2018	Obstructions, Light/Mark/Remove (Safety Areas)	Constr. Removal of FAR Part 77 Obstructions (vegetation), and Lighting of Rwy 12/30 Obstruction	\$135,000	\$15,000	\$0	\$150,000
2018	Land:Acquire Land/Easement For Approaches	Land Acquisition for Rwy 12/30 RPZs	\$6,705	\$6,705	\$136,590	\$150,000
2018	Equipment:Acquire Security Equipment/Install Perimeter Fencing [Not Part 107] - Standards	Design Security Fencing Improvements (perimeter of airport, approx. 11,000 lf)	\$5,364	\$5,364	\$109,272	\$120,000
2019	Planning:<Conduct/Update> <Airport Master Plan Study {ALP, EA, etc.}>	Update Airport Master Plan	\$8,940	\$8,940	\$182,120	\$200,000
2019	Equipment:Acquire Security Equipment/Install Perimeter Fencing [Not Part 107] - Standards	Constr. Security Fencing Improvements (perimeter of airport, approx. 11,000 lf)	\$49,170	\$49,170	\$1,001,660	\$1,100,000
Airport Total:			\$1,073,781	\$313,009	\$4,439,175	\$5,825,965

Airport Projects - by Airport

Airport Name - County

FY	Project Component	Project Description	State Share	Local Share	Federal Share	Project Total
SAN CARLOS APACHE - GILA						
2015	Other:<Construct/Improve/Repair> <Fuel Farm/Utilities> [MAP] - Other	Constr. fuel farm - JetA and Avgas - east of the extg. west tiedown ramp: Ph. 2.	\$6,705	\$6,705	\$136,590	\$150,000
2016	Taxiways:Rehabilitate Taxiway - Reconstruct	Crack seal, fog seal, and remark Twy A, A1, A2, A3, A4, A5, and A6 (33,000 sy) (design/constr.).	\$4,023	\$4,023	\$81,954	\$90,000
2016	Runways:Rehabilitate Runway - Reconstruct	Crack seal, fog seal, and remark Rwy 9/27 (72,250 sy) (design/constr.).	\$12,292	\$12,293	\$250,415	\$275,000
2016	Apron:Rehabilitate Apron - Reconstruction	Crack seal, fog seal, and remark east and west aprons (36,450 sy) (design/constr.).	\$4,023	\$4,023	\$81,954	\$90,000
2016	Apron:Install Apron Lighting - Standards	Install area lighting around the apron.	\$4,470	\$4,470	\$91,060	\$100,000
2017	Planning:Conduct <Environmental Assessment/Environmental Impact Statement/Feasibility> <Study/Update>	EA for grading and drainage mitigation on the south side of Rwy 9/27 to repair the wash and allow drainage into the wash. Includes fence and wash intersections.	\$13,410	\$13,410	\$273,180	\$300,000
2018	Other:Improve Airport <Drainage/Erosion Control/Miscellaneous Improvements> - Standards	Grading and drainage mitigation on the south side of Rwy 9/27 to repair the wash and allow drainage into the wash.	\$22,350	\$22,350	\$455,300	\$500,000
2019	Taxiways:Install Taxiway Lighting (e.g., SMGCS, Reflectors, MITL) - Standards	Install lighting and signage on Twys A, A1, A2, A3, A4, A5, and A6.	\$17,433	\$17,433	\$355,134	\$390,000
Airport Total:			\$84,706	\$84,707	\$1,725,587	\$1,895,000
SAN MANUEL - PINAL						
2015	Planning:Conduct <Environmental Assessment/Environmental Impact Statement/Feasibility> <Study/Update>	EA for Land Acquisition (approx. 155 acres, Parcel # 307-05-014-B).	\$8,940	\$8,940	\$182,120	\$200,000
2016	New Airports:Acquire [Existing] Airport - Standards	Land Acquisition of Airport Property which is currently in a long term lease to the County (approx. 155 acres parcel No. 307-05-014-B)	\$20,115	\$20,115	\$409,770	\$450,000
2017	Taxiways:<Extend/Widen/Strengthen> Taxiway - Standards	Design Twy A and connector twy extension (approx. 900 ft x 35 ft) to Rwy 29.	\$2,235	\$2,235	\$45,530	\$50,000
2018	Taxiways:<Extend/Widen/Strengthen> Taxiway - Standards	Constr. Twy A extension and connector to Rwy 29 (Approx. 900 ft x 35 ft)	\$13,410	\$13,410	\$273,180	\$300,000
2019	Equipment:Acquire Security Equipment/Install Perimeter Fencing [Not Part 107] - Standards	Install approx. 12,000 lf of chainlink security fencing and gates.	\$8,940	\$8,940	\$182,120	\$200,000
Airport Total:			\$53,640	\$53,640	\$1,092,720	\$1,200,000

Airport Projects - by Airport

Airport Name - County						
FY	Project Component	Project Description	State Share	Local Share	Federal Share	Project Total
SCOTTSDALE - MARICOPA						
2015	APMS - Apron Pavement Preservation	Crack Seal and Rubberized Asphalt Emulsion Seal Coat A01SC 30	\$129,970	\$14,441	\$0	\$144,411
2015	APMS - Taxiway Pavement Preservation	Crack Seal and Rubberized Asphalt Emulsion Seal Coat TWBSC 10	\$157,649	\$17,517	\$0	\$175,166
2015	Taxiways:<Extend/Widen/Strengthen> Taxiway - Standards	Strengthen/widen parallel Twy A and exits (14,600 ft x 50 ft), approx. 104,000 sy, (Including shoulders, MITL, and Guidance Signs).	\$402,300	\$402,300	\$8,195,400	\$9,000,000
2015	APMS - Taxiway Pavement Preservation	Crack Seal and Rubberized Asphalt Emulsion Seal Coat TWASC 10	\$183,086	\$20,343	\$0	\$203,429
2015	APMS - Taxiway Pavement Preservation	Thin Asphalt Overlay/PFC TWCSC 10	\$38,005	\$4,223	\$0	\$42,228
2016	Runways:<Extend/Widen/Strengthen> Runway [To Meet Standards] - Standards	Strengthen Rwy 3-21 to 100,000 pounds DWL (8,250 ft x 100 ft) - 110,000 sy. The project also includes improving the Rwy shoulders, Blast Pads, and new MIRL.	\$268,200	\$268,200	\$5,463,600	\$6,000,000
2016	Land:Acquire <Land/Easement> For Development/Relocation	Partial reimbursement for a 10 acre parcel of land on the east side of the airport needed to provide additional airport capacity (APN 215-56-226 & 215-56-227), Ph. 1.	\$111,750	\$111,750	\$2,276,500	\$2,500,000
2017	Other:Improve Airport <Drainage/Erosion Control/Miscellaneous Improvements> - Standards	Place additional rock in the approach area of Rwy 3, approx. 85,000 sy.	\$22,350	\$22,350	\$455,300	\$500,000
2017	Land:Acquire <Land/Easement> For Development/Relocation	Partial reimbursement for a 10 acre parcel of land on the east side of the Airport needed to provide additional airport capacity (APN 215-56-226 and 215-56-227), Ph. 2.	\$111,750	\$111,750	\$2,276,500	\$2,500,000
2018	APMS - Taxiway Pavement Preservation	Mill and Replace PFC TWASC 10	\$1,285,137	\$142,793	\$0	\$1,427,930
2018	Land:Acquire <Land/Easement> For Development/Relocation	Partial reimbursement for a 10 acre parcel of land on the east side of the Airport needed to provide additional airport capacity (APN 215-56-226 and 215-56-227), Ph. 3.	\$111,750	\$111,750	\$2,276,500	\$2,500,000
2018	Apron:Rehabilitate Apron - Reconstruction	Recon. the Delta Apron (approx. 840 ft x 400 ft), 37,300 sy, located on the west side of the airfield at the south end of the airport.	\$98,340	\$98,340	\$2,003,320	\$2,200,000
2019	Taxiways:<Extend/Widen/Strengthen> Taxiway - Standards	Recon./Strengthen/widen Twy C, approx. 800 ft x 50 ft (4,600 sy).	\$17,880	\$17,880	\$364,240	\$400,000
2019	Land:Acquire <Land/Easement> For Development/Relocation	Partial reimbursement for a 10 acre parcel of land on the east side of the Airport needed to provide additional airport capacity (APN 215-56-226 and 215-56-227), Ph. 4.	\$111,750	\$111,750	\$2,276,500	\$2,500,000
Airport Total:			\$3,049,917	\$1,455,387	\$25,587,860	\$30,093,164

Airport Projects - by Airport

Airport Name - County

FY	Project Component	Project Description	State Share	Local Share	Federal Share	Project Total
SEDONA - YAVAPAI						
2015	Apron:Rehabilitate Apron - Reconstruction	Design & Constr. Apron D Rehab. (14,000 sy)	\$41,124	\$41,124	\$837,752	\$920,000
2016	Apron:Construct Apron - Capacity	Design & Constr. Southwest Apron Expansion, Ph. 2 (300 ft x 580 ft).	\$62,580	\$62,580	\$1,274,840	\$1,400,000
2016	Apron, Construct (New)	Constr. Taxilanes B4 (150 ft x 50 ft) and B5 (170 ft x 60 ft) Extensions.	\$389,500	\$43,278	\$0	\$432,778
2017	APMS - Apron Pavement Preservation	Crack Seal and Rubberized Asphalt Emulsion Seal Coat A01SD 20	\$20,255	\$2,251	\$0	\$22,506
2017	APMS - Apron Pavement Preservation	Thin Asphalt Overlay/PFC A01SD 10	\$179,044	\$19,894	\$0	\$198,938
2017	APMS - Apron Pavement Preservation	Thin Asphalt Overlay/PFC A03SD 10	\$37,881	\$4,209	\$0	\$42,090
2017	APMS - Apron Pavement Preservation	Crack Seal and Rubberized Asphalt Emulsion Seal Coat A02SD 10	\$89,143	\$9,905	\$0	\$99,048
2017	APMS - Apron Pavement Preservation	Crack Seal and Rubberized Asphalt Emulsion Seal Coat A02SD 20	\$20,816	\$2,313	\$0	\$23,129
2017	Ground Transportation:<Construct/Expand/Improve/Modify/Rehabilitate> Service Road - Other	Design & Constr. Perimeter Road (5,500 ft x 20 ft)	\$30,396	\$30,396	\$619,208	\$680,000
2018	Auto Parking, Construct	Design Auxiliary Parking Lot (8,000 sy)	\$76,500	\$8,500	\$0	\$85,000
2019	Auto Parking, Construct	Construct Auxiliary Parking Lot (8,000 sy)	\$810,000	\$90,000	\$0	\$900,000
Airport Total:			\$1,757,239	\$314,450	\$2,731,800	\$4,803,489
SHOW LOW RGNL - NAVAJO						
2015	Runways:Rehabilitate Runway - Reconstruct	Rehabilitate Rwy 6/24 (7,200 ft x 100 ft) Mill & Overlay.	\$60,000	\$60,000	\$2,280,000	\$2,400,000
2016	Planning:<Conduct/Update> <Airport Master Plan Study {ALP, EA, etc.}>	Master Plan Update.	\$6,250	\$6,250	\$237,500	\$250,000
2017	APMS - Runway Pavement Preservation	Thin Asphalt Overlay/PFC RW624SL 10	\$928,896	\$103,211	\$0	\$1,032,107
2017	Runways:<Construct/Extend/Improve> Runway Safety Area [Non-Primary Airports] - Standards	Install EMAS Rwy 6 (approx. 100 ft x 250 ft).	\$87,500	\$87,500	\$3,325,000	\$3,500,000
2018	Apron:Expand Apron - Capacity	Design apron expansion east of terminal building (16,000 sy).	\$3,750	\$3,750	\$142,500	\$150,000
2019	Apron:Expand Apron - Capacity	Construct apron expansion east of terminal building (16,000 sy).	\$42,500	\$42,500	\$1,615,000	\$1,700,000
Airport Total:			\$1,128,896	\$303,211	\$7,600,000	\$9,032,107
SIERRA VISTA MUNI-LIBBY AAF - COCHISE						
2015	Taxiways:<Extend/Widen/Strengthen> Taxiway - Standards	Design approx. 3,000 lf of Twy G and J strengthening project to include a 3 inch overlay over extg. ACP.	\$2,235	\$2,235	\$45,530	\$50,000
2015	Runways:Install Runway Sensors - Standards	Design and install AWOS software upgrades to allow compatibility between the two extg. surface observation sites and one recently installed site.	\$3,352	\$3,353	\$68,295	\$75,000
2015	Other:<Construct/Improve/Repair> <Fuel Farm/Utilities> [MAP] - Other	Design new 120,000 gallon water storage tank and 1,000 GPM fire pump - 1,200 lf - 8 inch water line, hydrants.	\$6,705	\$6,705	\$136,590	\$150,000

Airport Projects - by Airport

Airport Name - County

FY	Project Component	Project Description	State Share	Local Share	Federal Share	Project Total
SIERRA VISTA MUNI-LIBBY AAF - COCHISE						
2015	Taxiways:Install Taxiway Lighting (MITL) [Required By Part 139] - Safety/Security	Constr. Twy P signing & lighting - Ph. 1 - install approx. 6,000 lf of required signage and lighting.	\$53,640	\$53,640	\$1,092,720	\$1,200,000
2016	Taxiways:Install Taxiway Lighting (MITL) [Required By Part 139] - Safety/Security	Constr. Twy P Signing and Lighting - Ph. 2 - Install approx. 6,000 lf of required signage and lighting.	\$53,640	\$53,640	\$1,092,720	\$1,200,000
2016	Taxiways:<Extend/Widen/Strengthen> Taxiway - Standards	Construct approximately 3,000 lf of Twy G and J strengthening project to include a 3 inch overlay over existing ACP.	\$22,350	\$22,350	\$455,300	\$500,000
2016	Planning:<Conduct/Update> <Airport Master Plan Study {ALP, EA, etc.}>	EA of approx. 9,000 lf x 75 ft wide of Twy J, A and B Extension, Ph. 4; Twy J Extension Project will create a civilian side parallel Twy to main Rwy 8-26.	\$17,880	\$17,880	\$364,240	\$400,000
2016	Other:<Construct/Improve/Repair> <Fuel Farm/Utilities> [MAP] - Other	Constr. of fire system upgrades including new 120,000 gallon storage tank, 1,000 GPM fire pump, 1,200 lf - 8 inch line, and hydrant installation.	\$33,525	\$33,525	\$682,950	\$750,000
2017	Planning:Conduct <Environmental Assessment/Environmental Impact Statement/Feasibility> <Study/Update>	EA of Rwy 12-30 and Twy K Extension Project. This project envisions extending Rwy 12-30 and Twy K 1,234 ft x 75 ft NW and construct hold apron and 500 ft overrun. Construct access road leading to AWOS.	\$8,940	\$8,940	\$182,120	\$200,000
2017	Taxiways:<Extend/Widen/Strengthen> Taxiway - Standards	Design approx. 7,000 ft x 75 ft wide Twy J Extension, 2,000 lf of adjoining Twy A and B Ph. 4 and 5. Twy J Extension Project will create a civilian side parallel Twy to main Rwy 8-26.	\$20,115	\$20,115	\$409,770	\$450,000
2018	Taxiways:Construct Taxiway - Capacity	Constr. approx. 4,500 ft x 75 ft Twy J Extension Ph. 4 and adjoining 1,000 lf of Twy B Extension. The Twy J Extension Project will create a civilian side parallel Twy to main Rwy 8-26.	\$100,575	\$100,575	\$2,048,850	\$2,250,000
2018	Runways:<Extend/Widen/Strengthen> Runway [To Meet Standards] - Standards	Design Rwy 12-30 and Twy K Extension Project. This project envisions extending Rwy 12-30 and Twy K 1,234 ft x 75 ft NW and constr. hold apron and 500 ft overrun. Constr. access road leading to AWOS.	\$8,940	\$8,940	\$182,120	\$200,000
2019	Runways:<Extend/Widen/Strengthen> Runway [To Meet Standards] - Standards	Constr. Rwy 12-30 and Twy K Extension Project. This project envisions extending Rwy 12-30 and Twy K 1,234 ft x 75 ft NW and constr. hold apron and 500 ft overrun. Constr. access road leading to AWOS.	\$290,550	\$290,550	\$5,918,900	\$6,500,000
2019	Taxiways:Construct Taxiway - Capacity	Constr. approx. 2,500 ft x 75 ft Twy J Extension - Ph. 5 and 1,000 lf of adjoining Twy A. The Twy J Extension Project will create a civilian side parallel Twy to main Rwy 8-26.	\$55,875	\$55,875	\$1,138,250	\$1,250,000
Airport Total:			\$678,322	\$678,323	\$13,818,355	\$15,175,000

Airport Projects - by Airport

Airport Name - County

FY	Project Component	Project Description	State Share	Local Share	Federal Share	Project Total
SPRINGERVILLE MUNI - APACHE						
2015	Apron:Expand/Strengthen Apron - Standards	Construct crack repair and seal coat for GA apron and main airport service road.	\$20,115	\$20,115	\$409,770	\$450,000
2015	Other:<Construct/Improve/Repair> <Fuel Farm/Utilities> [MAP] - Other	Design Fuel Farm relocation, Rwy 3 Safety Area relocate fencing/improve perimeter fencing and Apron rehabilitation and service road project.	\$9,387	\$9,387	\$191,226	\$210,000
2016	Ground Transportation:<Construct/Expand/Improve/Modify/Rehabilitate> Service Road - Other	Construct perimeter fencing improvements, including removal of obstructions within Rwy 3 end and rehabilitate Apron/service road.	\$33,525	\$33,525	\$682,950	\$750,000
2016	Other:<Construct/Improve/Repair> <Fuel Farm/Utilities> [MAP] - Other	Construct relocation of above ground fuel facility.	\$31,066	\$31,067	\$632,867	\$695,000
2016	Planning:Conduct <Environmental Assessment/Environmental Impact Statement/Feasibility> <Study/Update>	EA for Twy B extension.	\$7,152	\$7,152	\$145,696	\$160,000
2017	Planning:<Conduct/Update> <Airport Master Plan Study {ALP, EA, etc.}>	Airport Layout Plan Update (ALP).	\$4,246	\$4,247	\$86,507	\$95,000
2017	Taxiways:Extend Taxiway - Capacity	Design Twy B Extension: Twy B will be extended from the intersection of Rwy 3/21 to the Rwy 11 end (approximately 1,500 lf). This design will also include perimeter fencing on the western side of airport	\$4,470	\$4,470	\$91,060	\$100,000
2018	Taxiways:Extend Taxiway - Capacity	Construct Twy B extension (approximately 1,500 lf).	\$35,760	\$35,760	\$728,480	\$800,000
Airport Total:			\$145,721	\$145,723	\$2,968,556	\$3,260,000
TAYLOR - NAVAJO						
2015	Land:Acquire Land/Easement For Approaches	Acquire 4.31 acres in fee for RPZ - Exhibit A parcel #4.	\$5,811	\$5,811	\$118,378	\$130,000
2016	Apron:Expand/Strengthen Apron - Standards	Construct reconfigured apron (300 ft x 400 ft) to east side of existing apron to meet design standards. Install security perimeter fence from terminal building along apron reconfiguration, reconfigure access/parking area for security.	\$44,700	\$44,700	\$910,600	\$1,000,000
2016	APMS - Taxiway Pavement Preservation	Crack Seal and Rubberized Asphalt Emulsion Seal Coat TWATA 20	\$70,412	\$7,824	\$0	\$78,236
2016	APMS - Taxiway Pavement Preservation	Crack Seal and Rubberized Asphalt Emulsion Seal Coat TH01TA 10	\$11,183	\$1,243	\$0	\$12,426
2017	Other:<Construct/Improve/Repair> <Fuel Farm/Utilities> [MAP] - Other	Relocate and install new self serve Av Gas Fuel Farm with provision for future Jet-A fuel.	\$10,058	\$10,057	\$204,885	\$225,000
2018	Ground Transportation:<Construct/Expand/Improve/Modify/Rehabilitate> Service Road - Other	Construct access road (1,500 ft x 24 ft) along the SE side of the existing hangar development area to hangars near Rwy 21 threshold.	\$14,751	\$14,751	\$300,498	\$330,000
2019	Planning:<Conduct/Update> <Airport Master Plan Study {ALP, EA, etc.}>	Develop an updated Master Plan for 2020 including an Airport Layout Plan update.	\$11,175	\$11,175	\$227,650	\$250,000
Airport Total:			\$168,090	\$95,561	\$1,762,011	\$2,025,662

Airport Projects - by Airport

Airport Name - County

FY	Project Component	Project Description	State Share	Local Share	Federal Share	Project Total
TUBA CITY - COCONINO						
2015	Runway, Rehabilitate	Reconstruct Rwy 15/33 (6,250 ft. x 75 ft.).	\$1,980,000	\$220,000	\$0	\$2,200,000
2017	Perimeter Fencing - Barbed Wire, Install (New)	Extend the perimeter fencing around the east side of the airport approximately 7,500 lf.	\$225,000	\$25,000	\$0	\$250,000
2018	Runway MIRL/HIRL, Install	Replace Rwy 15/33 edge lights.	\$315,000	\$35,000	\$0	\$350,000
2019	Runway Vertical/Visual Guidance System, Install/Upgrade	Install replacement visual aids on Rwy 15/33 including PAPI's and wind cone.	\$337,500	\$37,500	\$0	\$375,000
Airport Total:			\$2,857,500	\$317,500	\$0	\$3,175,000
TUCSON INTL - PIMA						
2015	Runway, Rehabilitate	Design for the reconstruction of Rwy 11L-29R, Twy A10, A13 and shoulders (approximately 1,871,469 sf). Mill/replace surface course and appurtenances including adjustment of center line light fixtures on Twy A10 & A13, re-grooving and striping.	\$666,225	\$74,025	\$0	\$740,250
2015	Taxiway, Rehabilitate	Design for the reconstruction of Twy D, shoulders and connectors. Mill/overlay (approx. 1,408,500 sf). Project includes marking and re-striping.	\$325,800	\$36,200	\$0	\$362,000
2015	Other:Environmental Mitigation	Install Solar Photovoltaic canopy structure within the remaining daily (phase 2) and hourly (phase 3) sections of the main terminal parking lot.	\$423,364	\$423,363	\$8,624,495	\$9,471,222
2015	Planning:Conduct <Environmental Assessment/Environmental Impact Statement/Feasibility> <Study/Update>	EIS for relocated Rwy 11R and associated Twy's. Includes inventory of environmental resources, an assessment of alternatives, analysis of impacts, identification of potential mitigation measures and/or findings of no impact.	\$67,050	\$67,050	\$1,365,900	\$1,500,000
2016	Planning:<Conduct/Update> <Airport Master Plan Study {ALP, EA, etc.}>	Perform an Airport GIS survey and obstruction analysis to allow for flight procedures to be developed for the new rwy program.	\$30,744	\$30,744	\$626,301	\$687,789
2016	Runways:Rehabilitate Runway - Reconstruct	Reconstruction of Rwy 11L-29R, Twy A10 & A13 (approximately 1,871,469 sf). Mill/replace surface course and appurtenances including adjustment of center light fixtures for Twy A10 & A13, re-grooving and striping.	\$423,796	\$423,797	\$8,633,312	\$9,480,905
2016	Taxiway, Rehabilitate	Phase 1 - Reconstruct North Portion of Twy D, Shoulders & Connectors. Mill/overlay (approx. 508,500 sf). Project includes marking and re-striping.	\$1,620,000	\$180,000	\$0	\$1,800,000
2017	Runways:Construct Runway [Includes Relocation] - Standards	Design for proposed development of 150 ft x 11,000 ft PCC Rwy 11R-29L. Project includes relocation of existing Rwy and construction of new parallel Rwy and center line Txy's.	\$345,472	\$345,472	\$7,037,737	\$7,728,681
2017	Other:Improve Airport <Drainage/Erosion Control/Miscellaneous Improvements> - Standards	Evaluation of the airport-wide drainage basin, storm water routing and improvements required for construction of the relocated parallel rwy.	\$10,352	\$10,351	\$210,876	\$231,579

Airport Projects - by Airport

Airport Name - County

FY	Project Component	Project Description	State Share	Local Share	Federal Share	Project Total
TUCSON INTL - PIMA						
2018	Taxiways:Construct Taxiway [Includes Relocation]	Construct a new bypass twy northwest of the RPZ's for Rwy 11L and 11R allowing aircraft to access the ANG Ramp from west of Rwy 11R-29L. Remove existing concrete apron from surrounding area and demolish existing buildings within the area.	\$390,540	\$390,540	\$7,955,828	\$8,736,908
2018	Taxiways:Construct Taxiway - Capacity	Construct portion of outboard Twy from A5 to A8.	\$270,915	\$270,916	\$5,518,917	\$6,060,748
2018	Taxiway, Construct (New)	Design of a new bypass twy northwest of the RPZ for Rwy 11L and Rwy 11R allowing aircraft to access the ANG Ramp from west of Rwy 11R/29L. Remove existing concrete apron from surrounding area and demolish existing buildings within the area.	\$540,000	\$60,000	\$0	\$600,000
2018	Taxiway, Rehabilitate	Phase 3 - Reconstruct half of South Portion of Twy D, Shoulders & Connectors. Mill/overlay (approximately 450,000 sf). Project includes marking and re-striping.	\$1,350,000	\$150,000	\$0	\$1,500,000
2019	Taxiways:Construct Taxiway - Capacity	Construct outboard twy from Twy A8 to property line boundary.	\$505,234	\$505,233	\$10,292,299	\$11,302,766
2019	Taxiway, Construct (New)	Design for the construction of an outboard Twy from Twy A8 to the property line boundary.	\$675,000	\$75,000	\$0	\$750,000
Airport Total:			\$7,644,492	\$3,042,691	\$50,265,665	\$60,952,848
WHITERIVER - NAVAJO						
2015	Other:<Light/Mark/Remove> Obstructions [Hazard Only e.g., Approaches] - Safety/Security	BIA yard relocation: relocate equipment bay building, offices, mechanics area, and fuel farm (design only).	\$8,940	\$8,940	\$182,120	\$200,000
2016	Other:<Light/Mark/Remove> Obstructions [Hazard Only e.g., Approaches] - Safety/Security	BIA yard relocation: relocate equipment bay building , office, mechanics area, and fuel farm (construct only).	\$13,410	\$13,410	\$273,180	\$300,000
2016	Runways:Rehabilitate Runway - Reconstruct	Crack seal, fog seal, and remark Rwy 1/19 (6,350 ft x 75 ft), Twy A (6,350 ft x 35 ft), connector Twys (5 at 240 ft x 35 ft), apron (600 ft x 200 ft) and helicopter operations area (design & constr.)	\$16,092	\$16,092	\$327,816	\$360,000
2017	Planning:Conduct <Environmental Assessment/Environmental Impact Statement/Feasibility> <Study/Update>	EA to install avgas (100LL) fuel farm (10,000 gallon tank) with credit card reader.	\$11,175	\$11,175	\$227,650	\$250,000
Airport Total:			\$49,617	\$49,617	\$1,010,766	\$1,110,000
WICKENBURG MUNI - MARICOPA						
2015	Taxiways:Construct Taxiway - Capacity	Design for an expanded T-Hangar development area including site preparation, drainage, utilities, and taxilanes (15,000 sy).	\$6,705	\$6,705	\$136,590	\$150,000
2015	Apron:Construct Apron - Environmental Mitigation	Design wash rack to help ensure that AC washing meets all state and federal environmental requirements.	\$1,173	\$1,174	\$23,903	\$26,250
2016	Runways:Install Runway <Vertical/Visual> Guidance System [PAPI/VASI/REIL/ALS/etc.] - Standards	Install Omni-Directional Approach Lights for Rwy 23.	\$670	\$671	\$13,659	\$15,000

Airport Projects - by Airport

Airport Name - County

FY	Project Component	Project Description	State Share	Local Share	Federal Share	Project Total
WICKENBURG MUNI - MARICOPA						
2016	Apron:Construct Apron - Environmental Mitigation	Constr. of a wash rack that will help ensure that AC washing meets all state and federal environmental requirements.	\$7,822	\$7,823	\$159,355	\$175,000
2016	Taxiways:Construct Taxiway - Capacity	Constr. of an expanded T-Hangar development area including site preparation, drainage, utilities, and taxilanes (15,000 sy).	\$67,050	\$67,050	\$1,365,900	\$1,500,000
2017	Runways:Install Runway <Vertical/Visual> Guidance System [PAPI/VASI/REIL/ALS/etc.] - Standards	Install Omni-Directional Approach Lights to Rwy 23.	\$4,470	\$4,470	\$91,060	\$100,000
2017	Runways:Install Runway Lighting (HIRL, MIRL, TDZ, LAHSO Or CL) - Standards	Design for the installation of LED MIRL/MITL (approx. 13,450 lf).	\$1,542	\$1,542	\$31,416	\$34,500
2018	Runways:Install Runway Lighting (HIRL, MIRL, TDZ, LAHSO Or CL) - Standards	Installation of LED MIRL/MITL (approx. 13,450 lf).	\$10,281	\$10,281	\$209,438	\$230,000
2019	Other:<Light/Mark/Remove> Obstructions - Standards	Removal of three hangars in the Rwy OFA.	\$3,129	\$3,129	\$63,742	\$70,000
Airport Total:			\$102,842	\$102,845	\$2,095,063	\$2,300,750
WINDOW ROCK - APACHE						
2015	Runways:Rehabilitate Runway - Reconstruct	Rehabilitate Rwy 02/20 (7,000 ft x 75 ft).	\$134,100	\$134,100	\$2,731,800	\$3,000,000
2016	Land For Protection (Safety Areas), Acquire	EA for the acquisition of 82 acres for RSA and parallel twy.	\$210,600	\$23,400	\$0	\$234,000
2018	Land For Protection (Safety Areas), Acquire	Acquire 82 acres for RSA and parallel twy.	\$270,000	\$30,000	\$0	\$300,000
2018	Perimeter Fencing - Barbed Wire, Install (New)	Relocate perimeter fencing (18,000 lf) outside of the ROFA.	\$405,000	\$45,000	\$0	\$450,000
2019	Taxiways:Construct Taxiway - Capacity	Construct Twy A (7,055 ft x 35 ft).	\$107,280	\$107,280	\$2,185,440	\$2,400,000
Airport Total:			\$1,126,980	\$339,780	\$4,917,240	\$6,384,000
WINSLOW-LINDBERGH RGNL - NAVAJO						
2015	Runways:Rehabilitate Runway - Reconstruct	Reconstruct Rwy 11-29 (7,099 ft x 100 ft, approximately 79,000 sy).	\$187,740	\$187,740	\$3,824,520	\$4,200,000
2015	Planning:Conduct <Environmental Assessment/Environmental Impact Statement/Feasibility> <Study/Update>	EA for and acquisitions for Rwy 4-22 Pavement Shift and Levee Relocation: Parcel ID #103-09-003H (128 acres, State Land Department), and #103-09-002H (3 acres).	\$13,410	\$13,410	\$273,180	\$300,000
2015	Runway, Rehabilitate	Design Rwy 11-29 Reconstruction (7,099 ft x 100 ft, approximately 79,000 sy).	\$270,000	\$30,000	\$0	\$300,000
2016	Security Fencing - Chain Link, Install (New)	Install Perimeter Fencing (38,200 lf).	\$607,500	\$67,500	\$0	\$675,000
2016	Taxiway, Rehabilitate	Design Twy B Reconstruction (40 ft x 6,800 ft).	\$130,500	\$14,500	\$0	\$145,000
2017	Taxiways:Rehabilitate Taxiway - Reconstruct	Reconstruct Twy B (40 ft x 6,800 ft).	\$71,520	\$71,520	\$1,456,960	\$1,600,000
2018	Land:Acquire Land/Easement For Approaches	Acquire Avigation Easement (3 acres): Parcel ID #103-09-002H.	\$3,263	\$3,263	\$66,474	\$73,000

Airport Projects - by Airport

Airport Name - County

<i>FY</i>	<i>Project Component</i>	<i>Project Description</i>	<i>State Share</i>	<i>Local Share</i>	<i>Federal Share</i>	<i>Project Total</i>
WINSLOW-LINDBERGH RGNL - NAVAJO						
2018	Land:Acquire Land/Easement For Approaches	Acquire 128 Acres: Parcel ID #130-09-003H (State Land Department).	\$40,230	\$40,230	\$819,540	\$900,000
2019	Apron:Construct Apron - Standards	Construct Twy A holding aprons (8,700 sy).	\$22,350	\$22,350	\$455,300	\$500,000
Airport Total:			\$1,346,513	\$450,513	\$6,895,974	\$8,693,000
YUMA MCAS/YUMA INTL - YUMA						
2015	Taxiways:Install Taxiway Lighting (MITL) [Required By Part 139] - Safety/Security	Design 10,000 lf new lighting on Twy F and Twy H with reconstruction of existing electrical vault to include emergency generator.	\$3,576	\$3,576	\$72,848	\$80,000
2017	Taxiways:Rehabilitate Taxiway - Reconstruct	Design rehab. of PCC Twy H1 north of Rwy 21R/3L, 3,000 ft x 75 ft plus 276 ft x 456 ft runup apron approx. 40,000 sy	\$7,376	\$7,375	\$150,249	\$165,000
2017	Taxiways:Rehabilitate Taxiway - Reconstruct	Complete restriping and marking of twy shoulders, centerlines and Rwy hold shorts.	\$12,292	\$12,293	\$250,415	\$275,000
2018	Taxiways:Rehabilitate Taxiway - Reconstruct	Constr. the rehab. of PCC Twy H1 north of Rwy 21R/3L, 3,000 ft x 75 ft plus 276 ft x 456 ft runup apron approx. 40,000 sy	\$134,100	\$134,100	\$2,731,800	\$3,000,000
2018	Apron:Rehabilitate Apron - Reconstruction	Design rehab./replacement of the extg. 20,000 sy of extg. terminal apron used by commerical air service.	\$8,940	\$8,940	\$182,120	\$200,000
2019	Apron:Rehabilitate Apron - Reconstruction	Rehab. and replacement of the extg. 20,000 sy of extg. terminal apron used by commerical air service.	\$134,100	\$134,100	\$2,731,800	\$3,000,000
Airport Total:			\$300,384	\$300,384	\$6,119,232	\$6,720,000
All Requested FSLs, All Funded SLs, APMS and State Projects:			\$170,836,154	\$66,629,901	\$868,592,947	\$1,106,059,002