



2016-2020

Five-Year Transportation Facilities Construction Program

Airport Capital Improvement Program

Prescott Airport Ernest A. Love Field - 2014 Arizona Airport of the Year

Table of Contents

Airport Program Overview	3
Airport Program	
Arizona Airports Map.....	7
Abbreviations/Acronyms.....	9
Summary of Airport Program Dollars	11
Airport Projects by Airport	13

Various Helpful Web Links

Five-Year Transportation and Facilities Construction Program:

<http://azdot.gov/planning/transportation-programming/current-program>

Priority Planning Advisory Committee (PPAC):

<http://azdot.gov/about/boards-and-committees/PriorityPlanningAdvisoryCommittee>

Aeronautics Home Page:

<http://azdot.gov/planning/airportdevelopment>

Airport Development Programs:

<http://azdot.gov/planning/airportdevelopment/development-and-planning>

This page is left intentionally blank.

Airport Program Overview

Program Year 2016 (Fiscal Years 2016 – 2012)

In conjunction with Arizona's public airports and the Federal Aviation Administration (FAA), ADOT develops the Five-Year Airport Capital Improvement Program (ACIP) to parallel the FAA's Airport Capital Improvement Program. The ACIP has the dual objective of maximizing the use of State dollars for airport development and maximizing FAA funding for Arizona airports. Federal monies are derived mainly from taxes on airline tickets and are distributed by the Federal Aviation Administration directly to local airports through the national Airport Improvement Program.

State funding comes mainly from flight property tax, aircraft lieu tax, aircraft registration, and aviation fuel tax. The ACIP development process allocates money from the State Aviation Fund and distributes these funds across five major programs of airport development assistance. The State Transportation Board approves this distribution annually. The five programs are:

1) Federal/State/Local Grants

When a federal agency provides eligible grants directly to the airports, the State provides ½ of the local share of approved grants directly to the airports. Projects utilizing federal, state and local funds include: Airport design, construction, safety, security, capacity enhancement, equipment, maintenance, environmental, planning, and land acquisition.

2) State/Local Grants

The State provides either 90% or 95% funding for prioritized approved grants directly to the airports. Projects utilizing state and local funds only include: design, construction, safety, security, capacity enhancement, environmental, planning and land acquisition.

3) Airport Pavement Management System (APMS)

Prioritized projects maintaining and protecting eligible aviation pavement surfaces are performed by the State. The State provides 100% of the design and construction administration for APMS projects and 90% of the construction costs. The airports provide a local share of 10% of the construction costs and airport access through a joint project agreement.

4) Airport Loan Program

The State considers and awards loans to airports. These loans have typically included revenue generating projects like construction of new fuel farms, aircraft "T-hangars" and large aviation business hangars.

5) Statewide System Planning and Services

The State performs state-wide system studies and projects either with only state funds or with state and federal funds.

Airport Program Overview (continued)

In summary, 65 public airports submitted 715 project requests for consideration worth \$1.11 B over the five-year program period. These projects represent all Federal/State/Local and all State/Local funding desires on the part of the airport sponsors. The State develops the APMS program, the Airport Loan program, and the Statewide System Planning program.

The tentative ACIP programs a total of \$1.11 B over the five-year program period is an approximately 1.4% decrease from the previous year's program. This slight decrease is due to reduced project request totals for the 5 year program compared to the previous program.

State funding to match Federal/State/Local grants is proposed at \$22.5 M over the program period. This is an approximately consistent with the previous year's program. This five-year investment of State funds will support about \$503 M in Federal aid and require about \$22.5 M from airport sponsors. The following program lists all requested federal/state/local grants submitted for this five-year program (approximately \$882.3 M in Federal aid was requested). Actual grant awards will be made by the federal agencies, with matching grants issued by the State upon approval.

The State's programs are designed to provide half of a sponsor's share of a federally funded project. Expected sponsor obligations on most federal projects in FY 2016 will be 8.94% of a projects total cost, making the state share 4.47%. Some federal grants have a local share of 5% or of 25%. For these few projects, the State share would be 2.5% or 12.5% respectively. As airport sponsors receive a federal grant, they will apply to the state for the matching funds.

State funding for State/Local grants are proposed at \$59.7 M. This is 8.1% less than last year's total of \$73.7 M. This is due to a reduction in requested projects from the sponsors. This investment of State funds will require about \$8.3 M from local airport sponsors. The following program lists only those projects for State/Local funding that have met the State Transportation Board's qualifying priority rating and available funding dollars.

The maximum total State grant funds to any one airport per fiscal year can not exceed 10% of the previous three year's average revenue into the State Aviation Fund. This maximum applies only to Federal/State/Local plus State/Local grant funds. For fiscal year 2016 the maximum grant funding is \$2.11 M per airport.

Airport Program Overview (continued)

The five-year ACIP also provides \$18 M for State funded Airport Loans. Up to \$3 M in Airport Loans may be issued in FY 2016. Loans are awarded on a first come, first serve basis as funding levels allow if approved by the STB upon recommendation from the Loan Committee.

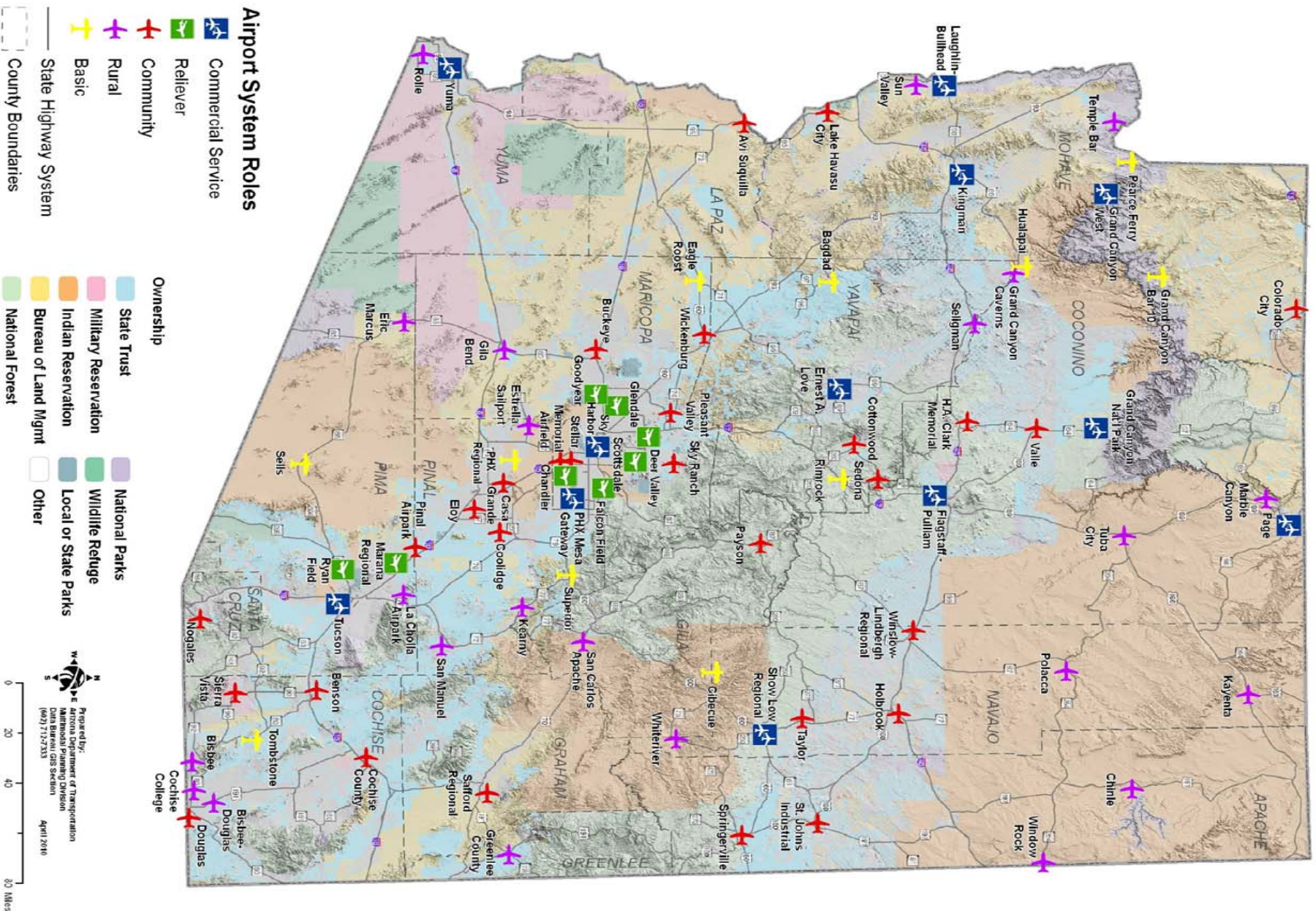
In addition to State grants and loans, ADOT supplements airport pavement maintenance statewide. The five-year ACIP provides \$30.0 M for statewide airport pavement maintenance. In 2016, \$5.6 M will be invested in Airport Pavement Management System (APMS) projects at public airports.

Statewide System Planning and Services are managed by ADOT and funded by both Federal and State monies. In 2016, \$3.5 M will be invested in statewide planning studies and services to benefit Arizona airports. The five-year ACIP proposes \$14.5 M for statewide planning studies and services to benefit Arizona airports.

The document includes a map showing the Arizona Airports included in the State Airport System Plan. Not all airports shown are eligible for project funding. Not all eligible airports have requested project funding in this plan.

This page is left intentionally blank.

Arizona Airports Map



This page is left intentionally blank.

ACIP 2016-2020 Acronyms

A/C	Advisory Circular (FAA)	INTL	International
ACP	Asphalt Cement Pavement	lb/lbs	Pound/pounds
ADG	Aircraft Design Group	LED	Light Emitting Diode
ALP	Airport Layout Plan	If	Linear Feet
AOA	Airport Operations Area	LPV	Lateral Precision with Vertical guidance
Apron	Aircraft Parking Area	MALSR	Medium-Intensity Approach Lighting System with Runway Alignment Indicator Lights
APMS	Airport Pavement Management System	MAP	Military Airport Program
APN	Assessor's Parcel Number	MIRL	Medium Intensity Runway Lights
ARC	Airport Reference Code	misc.	Miscellaneous
ARFF	Aircraft Rescue and Fire Fighting	MITL	Medium Intensity Taxiway Lights
ASLD	Arizona State Land Department	NAVAID	Navigational Aid
ASOS	Automated Surface Observation System	NEPA	National Environmental Policy Act
ASR	Airport Surveillance Radar	NOTAM	Notice to Airmen
ASV	Annual Service Volume	OFA	Object Free Area
ATCT	Air Traffic Control Tower	PAPI	Precision Approach Path Indicator
AWOS	Automated Weather Observation System	PCC	Portland Cement Concrete
BLM	Bureau of Land Management	PCI	Pavement Condition Index
BRL	Building Restriction Line	PFC	Porous Friction Course
CatEx	Categorical Exclusion	REIL	Runway End Identifier Lights
CERT	Certification	RGL	Runway Guard Light
DNL or LDN	Day/Night Equivalent Sound Level	ROD	Record of Decision
DWL	Dual Wheel Load	ROFA	Runway Obstacle Free Area
EA	Environmental Assessment	RSA	Runway Safety Area
EIS	Environmental Impact Statement	RSAT	Runway Safety Action Team
EMAS	Engineered Materials Arresting System	RPZ	Runway Protection Zone
FAA	Federal Aviation Administration	RVZ	Runway Visibility Zone
FBO	Fixed Base Operator	Rwy	Runway
FOD	Foreign Object Debris	SASP	State Airports System Plan
FONSI	Finding of No Significant Impact	sf	Square Feet
FAR	Federal Aviation Regulation	SRE	Snow Removal Equipment
FEMA	Federal Emergency Management Agency	SWPPP	Stormwater Pollution Prevention Plan
ft	Feet	sy	Square Yards
GA	General Aviation	TSA	Transportation Security Administration
GPS	Global Positioning System	Twy	Taxiway
HIRL	High Intensity Runway Lights		
ILS	Instrument Landing System		

This page is left intentionally blank.

Summary of Airport Program Dollars

	State Share	Local Share	Federal Share	Project Totals
FY 2016 Fed/State/Local	\$9,356,341	\$9,356,312	\$125,558,274	\$144,270,927
FY 2016 State/Local Total	\$14,359,552	\$2,051,061		\$16,410,613
FY 2016 APMS Totals	\$5,678,196	\$630,911		\$6,309,107
FY 2016 State Totals	\$3,500,000	\$0		\$3,500,000
FY 2016 Project Totals	\$32,894,089	\$12,038,284	\$125,558,274	\$170,490,647
FY 2017 Fed/State/Local	\$8,086,446	\$8,086,448	\$105,641,684	\$121,814,578
FY 2017 State/Local Total	\$11,901,199	\$2,233,467		\$14,134,666
FY 2017 APMS Totals	\$6,878,113	\$764,236		\$7,642,349
FY 2017 State Totals	\$2,500,000	\$0		\$2,500,000
FY 2017 Project Totals	\$29,365,758	\$11,084,151	\$105,641,684	\$146,091,593
FY 2018 Fed/State/Local	\$11,431,246	\$11,431,248	\$167,955,810	\$190,818,304
FY 2018 State/Local Total	\$12,514,099	\$1,791,289		\$14,305,388
FY 2018 APMS Totals	\$5,485,672	\$609,519		\$6,095,191
FY 2018 State Totals	\$2,500,000	\$0		\$2,500,000
FY 2018 Project Totals	\$31,931,017	\$13,832,056	\$167,955,810	\$213,718,883
FY 2019 Fed/State/Local	\$15,118,432	\$15,118,431	\$263,504,491	\$293,741,354
FY 2019 State/Local Total	\$10,515,639	\$1,531,527		\$12,047,166
FY 2019 APMS Totals	\$5,931,144	\$659,016		\$6,590,160
FY 2019 State Totals	\$3,500,000	\$0		\$3,500,000
FY 2019 Project Totals	\$35,065,215	\$17,308,974	\$263,504,491	\$315,878,680
FY 2020 Fed/State/Local	\$12,838,102	\$12,838,104	\$219,616,018	\$245,292,224
FY 2020 State/Local Total	\$10,416,238	\$841,916		\$11,258,154
FY 2020 APMS Totals	\$6,276,546	\$697,394		\$6,973,940
FY 2020 State Totals	\$3,500,000	\$0		\$3,500,000
FY 2020 Project Totals	\$33,030,886	\$14,377,414	\$219,616,018	\$267,024,318
Total 5-Year Funded Program	\$162,286,965	\$68,640,879	\$882,276,277	\$1,113,204,121

Airport Projects - by Airport

Airport Name - County

FY	Project Component	Project Description	State Share	Local Share	Federal Share	Project Total
AERONAUTICS - MARICOPA						
2016	Master Plans	System Planning and Services	\$3,500,000	\$0	\$0	\$3,500,000
2016	APMS - Runway Pavement Preservation	APMS Annual Design Services	\$720,000	\$80,000	\$0	\$800,000
2017	Master Plans	System Planning and Services	\$2,500,000	\$0	\$0	\$2,500,000
2017	APMS - Runway Pavement Preservation	APMS Annual Design Services	\$720,000	\$80,000	\$0	\$800,000
2018	APMS - Runway Pavement Preservation	APMS Annual Design Services	\$810,000	\$90,000	\$0	\$900,000
2018	Master Plans	System Planning and Services	\$2,500,000	\$0	\$0	\$2,500,000
2019	Master Plans	System Planning and Services	\$3,500,000	\$0	\$0	\$3,500,000
2019	APMS - Runway Pavement Preservation	APMS Annual Design Services	\$810,000	\$90,000	\$0	\$900,000
2020	Master Plans	System Planning and Services	\$3,500,000	\$0	\$0	\$3,500,000
2020	APMS - Runway Pavement Preservation	APMS Annual Design Services	\$810,000	\$90,000	\$0	\$900,000
Airport Total:			\$19,370,000	\$430,000	\$0	\$19,800,000
AK CHIN REGIONAL - PINAL						
2017	APMS - Runway Pavement Preservation	2017 (2012ST) Crack Seal and Rubberized Asphalt Emulsion Seal Coat RW422AC 20	\$24,529	\$2,725	\$0	\$27,254
2017	APMS - Runway Pavement Preservation	2017 (ST2012) Thin Asphalt Overlay or PFC RW422AC 10	\$277,691	\$30,855	\$0	\$308,546
Airport Total:			\$302,220	\$33,580	\$0	\$335,800
AVI SUQUILLA - LA PAZ						
2017	Other:<Construct/Improve/Repair> <Fuel Farm/Utilities> [MAP] - Other	Construct spill containment for fuel delivery and CRIT Fueling Trucks, security fencing and lighting at fuel farm in accordance with SWPPP developed as part of Master Plan Update	\$14,885	\$14,885	\$303,230	\$333,000
2017	APMS - Runway Pavement Preservation	Crack Seal and Rubberized Asphalt Emulsion Seal Coat TWAAS 10	\$288,742	\$32,082	\$0	\$320,824
2018	Planning:Conduct <Environmental Assessment/Environmental Impact Statement/Feasibility> <Study/Update>	EA for short term Master Plan projects: GA Apron/Terminal area drainage, utility relocation/extension & road/parking rehabilitation including dedicating 3-acres of Tribal Trust Land for utility corridor and Airport Road right-of way.	\$9,834	\$9,834	\$200,332	\$220,000
2019	Other:Improve Airport <Drainage/Erosion Control/Miscellaneous Improvements> - Standards	Design GA Terminal/Apron area drainage, relocate/install storm drainage, 5,000 LF of Fire Protection water line, sanitary sewer main, and electrical/telephone facilities; rehab 8,000 sy Access Road and 11,000 sy Public Parking.	\$11,175	\$11,175	\$227,650	\$250,000
2020	Other:Improve Airport <Drainage/Erosion Control/Miscellaneous Improvements> - Standards	Constr GA Terminal/Apron area drainage, relocate/install storm drainage, 5,000 LF of Fire Protection water line, sanitary sewer main, and electrical/telephone public facilities; rehab 8,000 sy Access Road and 11,000 sy Public Parking.	\$122,925	\$122,925	\$2,504,150	\$2,750,000

Airport Projects - by Airport

Airport Name - County

FY	Project Component	Project Description	State Share	Local Share	Federal Share	Project Total
AVI SUQUILLA - LA PAZ						
2020	APMS - Taxiway Pavement Preservation	Crack Seal and Rubberized Asphalt Emulsion Seal Coat RW119AS 10	\$186,346	\$20,705	\$0	\$207,051
2020	APMS - Taxiway Pavement Preservation	Crack Seal and Rubberized Asphalt Emulsion Seal Coat TWAAS 20	\$103,528	\$11,503	\$0	\$115,031
2020	APMS - Taxiway Pavement Preservation	Crack Seal and Rubberized Asphalt Emulsion Seal Coat TWBAS 10	\$77,065	\$8,563	\$0	\$85,628
2020	APMS - Taxiway Pavement Preservation	Crack Seal and Rubberized Asphalt Emulsion Seal Coat TWBAS 20	\$59,059	\$6,562	\$0	\$65,621
Airport Total:			\$873,559	\$238,234	\$3,235,362	\$4,347,155
BAGDAD - YAVAPAI						
2016	Runway, Rehabilitate	Design partial Rwy 5/23 recon. to meet gradient/line of sight requirements and construct	\$126,000	\$14,000	\$0	\$140,000
2016	Taxiway, Construct (New)	Design engineering for proper taxiway turnarounds.	\$42,300	\$4,700	\$0	\$47,000
2017	Runways:<Extend/Widen/Strengthen> Runway [To Meet Standards] - Standards	Constr. Rwy 5/23 Gradient and Line-of-Sight Improvements.	\$36,207	\$36,207	\$737,586	\$810,000
2017	Taxiways:<Extend/Widen/Strengthen> Taxiway - Standards	Constr.Twy Turnarounds Serving Each End of Rwy 5/23.	\$11,398	\$11,399	\$232,203	\$255,000
2018	APMS - Runway Pavement Preservation	RW523BG 10 RW523BG 10	\$410,352	\$45,595	\$0	\$455,947
2019	Auto Parking, Construct	Automobile paved parking in terminal area	\$90,000	\$10,000	\$0	\$100,000
Airport Total:			\$716,257	\$121,901	\$969,789	\$1,807,947
BENSON MUNI - COCHISE						
2016	Equipment:Acquire Security Equipment/Install Perimeter Fencing [Not Part 107] - Standards	Design perimeter fence (approx. 15,000 lf) and access gates.	\$2,235	\$2,235	\$45,530	\$50,000
2017	Equipment:Acquire Security Equipment/Install Perimeter Fencing [Not Part 107] - Standards	Install airport perimeter/wildlife fence and gates (approx. 15,000 lf).	\$13,410	\$13,410	\$273,180	\$300,000
2018	Taxiways:Construct Taxiway - Capacity	Constr. connector Twy (35 ft x 125 ft) and Taxilanes (35 ft x 50 ft) to Rwy 10 and T-Hangar Pads.	\$13,410	\$13,410	\$273,180	\$300,000
2019	APMS - Runway Pavement Preservation	2019 (2014LCD) Crack Seal and Rubberized Asphalt Emulsion Seal Coat RW1028BN 10	\$161,384	\$17,931	\$0	\$179,315
2019	APMS - Apron Pavement Preservation	Crack Seal and Rubberized Asphalt Emulsion Seal Coat A01BN 30	\$2,893	\$321	\$0	\$3,214
2020	APMS - Taxiway Pavement Preservation	Thin Asphalt Overlay or PFC TWABN 10	\$302,609	\$33,623	\$0	\$336,232
2020	Land For Development, Acquire	Complete EA for land acquisition for extension of Rwy 10.	\$270,000	\$30,000	\$0	\$300,000
2020	Planning:<Conduct/Update> <Airport Master Plan Study {ALP, EA, etc.}>	Update Airport Master Plan	\$11,175	\$11,175	\$227,650	\$250,000
Airport Total:			\$777,116	\$122,105	\$819,540	\$1,718,761

Airport Projects - by Airport

Airport Name - County

<i>FY</i>	<i>Project Component</i>	<i>Project Description</i>	<i>State Share</i>	<i>Local Share</i>	<i>Federal Share</i>	<i>Project Total</i>
BISBEE DOUGLAS INTL - COCHISE						
2017	Taxiways:Rehabilitate Taxiway - Reconstruct	Reconstruct Twy A, Ph. 1, (A2 to A3 approximately 1,100 ft x 35 ft).	\$16,986	\$16,986	\$346,028	\$380,000
2019	Taxiways:Rehabilitate Taxiway - Reconstruct	Reconstruct Twy A, Phase 2, Twy A3 to A4 (approximately 1,300 ft x 35 ft).	\$13,410	\$13,410	\$273,180	\$300,000
Airport Total:			\$30,396	\$30,396	\$619,208	\$680,000
BISBEE MUNI - COCHISE						
2016	APMS - Runway Pavement Preservation	Crack Seal and Rubberized Asphalt Emulsion Seal Coat RW1735BM 10	\$209,532	\$23,281	\$0	\$232,813
2016	Runways:Install Runway <Vertical/Visual> Guidance System [PAPI/VASI/REIL/ALS/etc.] - Standards	Install PAPIs on Rwy 17/35 (construct only).	\$10,058	\$10,057	\$204,885	\$225,000
2017	Taxiways:Construct Taxiway [Includes Relocation]	Relocate Twy A (5,900 ft x 25 ft) to 225 ft from Rwy centerline (construct only). Phase 1 approximately 2,050 ft from A-1 to A-3.	\$40,230	\$40,230	\$819,540	\$900,000
Airport Total:			\$259,820	\$73,568	\$1,024,425	\$1,357,813
BUCKEYE MUNI - MARICOPA						
2016	APMS - Taxiway Pavement Preservation	Mill and Replace Porous Friction Course RW1735BK 10	\$891,411	\$99,046	\$0	\$990,457
2016	Equipment:Acquire Equipment (e.g., Sweepers, etc.) - Standards	Acquire Equipment - Mower	\$3,352	\$3,353	\$68,295	\$75,000
2017	Taxiways:Rehabilitate Taxiway - Reconstruct	Twy Recon. Ph. 1 (approx. 18,500 SY)	\$55,875	\$55,875	\$1,138,250	\$1,250,000
2018	Land For Protection (Safety Areas), Acquire	Land Acquisition (74 acres - approach protection). Includes a portion of one or more of the following parcels: 504-15-130D, 504-15-029J, and 504-15-029K.	\$1,800,000	\$200,000	\$0	\$2,000,000
2018	Taxiways:Rehabilitate Taxiway - Reconstruct	Twy Recon. Ph. 2 (approx. 12,500 SY)	\$37,995	\$37,995	\$774,010	\$850,000
2019	APMS - Runway Pavement Preservation	Crack Seal and Rubberized Asphalt Emulsion Seal Coat RW1735BK 10	\$200,398	\$22,267	\$0	\$222,665
2019	Taxiways:Install Taxiway Lighting (e.g., SMGCS, Reflectors, MITL) - Standards	Constr. RSAT Projects - Airfield Lighting & Signage. Replace stake mounted MITLs and modify signage to reflect the new naming conventions.	\$42,465	\$42,465	\$865,070	\$950,000
2020	Equipment:Acquire Security Equipment/Install Perimeter Fencing [Not Part 107] - Standards	Constr. RSAT Projects - Airfield Access Control. This project would automate the existing gates, install card readers and install security cameras at the gates.	\$17,880	\$17,880	\$364,240	\$400,000
Airport Total:			\$3,049,376	\$478,881	\$3,209,865	\$6,738,122

Airport Projects - by Airport

Airport Name - County

<i>FY</i>	<i>Project Component</i>	<i>Project Description</i>	<i>State Share</i>	<i>Local Share</i>	<i>Federal Share</i>	<i>Project Total</i>
CASA GRANDE MUNI - PINAL						
2016	Heliport:<Construct/Expand/Improve/Modify/Rehabilitate> Helipad/Heliport - Standards	Design/Constr. Helicopter Apron and Vehicle Access/Parking (10,000 sy) and Utilities (12-AIR-2908). ALP addition is in progress.	\$12,516	\$12,516	\$254,968	\$280,000
2017	Other:<Construct/Rehabilitate> Parking Lot [Non Revenue Producing-Non Hub/MAP] - Other	Expand Terminal Area Parking Lot (6,660 sy (150 ft x 400 ft), relocate 500 ft of security fencing and utilities (200 ft water/electric and one fire hydrant) (12-AIR-2904).	\$22,350	\$22,350	\$455,300	\$500,000
2017	Planning:Conduct <Environmental Assessment/Environmental Impact Statement/Feasibility> <Study/Update>	Complete an EA on 55 acres of land required for planned Rwy Displacement; Drainage Ditch Relocation (13-AIR-3002).	\$2,235	\$2,235	\$45,530	\$50,000
2018	Planning:Conduct <Environmental Assessment/Environmental Impact Statement/Feasibility> <Study/Update>	Conduct EA on property that will need to be purchased in order to extend Rwy 05/23, Twy B, ILS and MALSR.	\$1,564	\$1,565	\$31,871	\$35,000
2018	Runways:<Construct/Extend/Improve> Runway Safety Area [Non-Primary Airports] - Standards	Design 1,300 x 100 ft Displacement/shift of Rwy 23 Threshold & Associated Rwy/Twy lighting/markings (13-AIR-1615).	\$2,012	\$2,011	\$40,977	\$45,000
2018	Other:Environmental Mitigation	Design/Constr. AC Wash Rack (70 ft x 70 ft) within West Apron area	\$14,304	\$14,304	\$291,392	\$320,000
2018	Other:Environmental Mitigation	Complete design for the relocation (80 ft x 1,300 ft) of the airport's drainage ditch running from NE to SW portions of airport.	\$3,218	\$3,219	\$65,563	\$72,000
2018	Land:Acquire <Land/Easement> For Development/Relocation	Purchase approx. 55 acres required for planned Rwy displacement/shift.	\$45,058	\$45,057	\$917,885	\$1,008,000
2018	Apron:Expand Apron - Capacity	Design/Constr. 11,500 sy apron to 72,000 DWL, expansion of SW Apron (12-AIR-2896)	\$38,442	\$38,442	\$783,116	\$860,000
2019	Other:Environmental Mitigation	Relocate drainage ditch (80 ft x 1,300 ft) running from NE to SW portions of airport.	\$3,218	\$3,219	\$65,563	\$72,000
2019	Land:Acquire <Land/Easement> For Development/Relocation	Purchase approx. 150 acres required for planned Rwy Extension; parallel Twy constr.; Drainage Ditch & ILS Relocation (13-AIR-3002). [Due to large number, Parcel Numbers are included in separate document].	\$122,925	\$122,925	\$2,504,150	\$2,750,000
2019	Runways:Construct Runway - Capacity	Construct 1,300 ft x 100 ft Displacement/shift of Rwy 23 Threshold & Associated Rwy/Twy lighting/markings (13-AIR-1615).	\$20,115	\$20,115	\$409,770	\$450,000
2020	Ground Transportation:<Construct/Expand/Improve/Modify/Rehabilitate> Service Road - Other	Design/Constr.(19,100 ft x 12 ft) perimeter service road (approx.14,000 ft) and security fence (13-AIR-2912).	\$62,982	\$62,983	\$1,283,035	\$1,409,000
2020	APMS - Apron Pavement Preservation	Thin Asphalt Overlay or PFC A01CG 40	\$506,453	\$56,273	\$0	\$562,726
2020	Runways:Rehabilitate Runway - Reconstruct	Design Rehab. of old portion of Rwy 5/23 (5,280 ft x 100 ft) and Terminal Apron (11,620 sy) (15-AIR-2931).	\$44,700	\$44,700	\$910,600	\$1,000,000
2020	Runways:Construct Runway (Environmental Mitigation)	Relocate (80 ft x 4,000 ft) Drainage Ditch running from NE to SW portions of airport.	\$32,184	\$32,184	\$655,632	\$720,000

Airport Projects - by Airport

Airport Name - County

FY	Project Component	Project Description	State Share	Local Share	Federal Share	Project Total
CASA GRANDE MUNI - PINAL						
Airport Total:			\$934,276	\$484,098	\$8,715,352	\$10,133,726
CHANDLER MUNI - MARICOPA						
2016	Apron:Construct Apron - Capacity	Constr. N Apron access taxilane Ph 2 - 1,260 lf x 35 ft apron area access taxilane (5,050 sy)	\$49,796	\$49,796	\$1,014,408	\$1,114,000
2016	Airport Drainage, Improve	Design and Constr. Drainage/Grading Improvements in RSA and TSA	\$1,842,300	\$204,700	\$0	\$2,047,000
2016	Apron:Rehabilitate Apron - Reconstruction	Design and Constr. rehab. North Terminal Apron Ph. 1 (27,000 sy)	\$40,230	\$40,230	\$819,540	\$900,000
2016	Other:Install Miscellaneous <NAVAIDS/Approach Aids> - Statutory Emphasis Programs	Replace 6 receivers and 5 transmitters currently operating in ATCT and add 1 800 Mhz 16 channel transceiver.	\$20,473	\$20,472	\$417,055	\$458,000
2017	Apron:Construct Apron - Capacity	Constr. Ph. 2b of N Apron Ph. 2 - approx. 540 ft x 275 ft apron area (16,450 sy)	\$139,285	\$139,285	\$2,837,430	\$3,116,000
2017	Apron:Rehabilitate Apron - Reconstruction	Design and Constr. rehab. North Terminal Apron Ph. 2 (47,600 sy)	\$62,312	\$62,312	\$1,269,376	\$1,394,000
2017	Planning:Conduct <Environmental Assessment/Environmental Impact Statement/Feasibility> <Study/Update>	EA for planned Twy B extension from extg. Twy N to approach end of Rwy 4L including connectors	\$12,471	\$12,472	\$254,057	\$279,000
2017	APMS - Runway Pavement Preservation	2017 (2012LCD) Crack Seal and Rubberized Asphalt Emulsion Seal Coat RW4R22LCH 10	\$204,166	\$22,685	\$0	\$226,851
2017	Airport Drainage, Improve	Design & Constr. Storm Water Management in Areas 4 and 7	\$273,600	\$30,400	\$0	\$304,000
2018	Taxiways:Extend Taxiway - Capacity	Design: Twy B extension from Twy N to Twy D 5,500 ft x 40 ft (approx. 24,500 sy); includes Twy lights, signs and grading	\$19,199	\$19,198	\$391,103	\$429,500
2019	Ground Transportation:<Construct/Expand/Improve/Modify/Rehabilitate> Access Road - Capacity	Design 3,150 lf of two-lane roadway (This project designs any roads still needed).	\$9,521	\$9,521	\$193,958	\$213,000
2019	Taxiways:Extend Taxiway - Capacity	Constr. Ph. 1 pavement for 2,800 ft x 40 ft Twy, connectors & runup areas (17,000 sy) between Twys N and H.	\$128,088	\$128,088	\$2,609,324	\$2,865,500
2020	Ground Transportation:<Construct/Expand/Improve/Modify/Rehabilitate> Access Road - Capacity	Constr. 3,150 lf of two-lane roadway (This project designs any roads still needed).	\$116,578	\$116,577	\$2,374,845	\$2,608,000
2020	Taxiways:Construct Taxiway - Capacity	Constr. Ph. 1 pavement for 2,300 ft x 40 ft Twy, connectors & runup areas (15,000 sy) between Twys H and D.	\$109,023	\$109,024	\$2,220,953	\$2,439,000
Airport Total:			\$3,027,042	\$964,760	\$14,402,049	\$18,393,851

Airport Projects - by Airport

Airport Name - County

FY	Project Component	Project Description	State Share	Local Share	Federal Share	Project Total
CHINLE MUNI - APACHE						
2016	Runways:Rehabilitate Runway - Reconstruct	Recon. Rwy 18/36 (6,900 ft x 60 ft).	\$89,400	\$89,400	\$1,821,200	\$2,000,000
2019	Buildings:<Construct/Expand/Imp/Modify/Rehabili tate> <Snow Removal Equipment/Chemical Storage Building/etc.> - Standards	Constr. An SRE building (40 ft x 50 ft).	\$15,645	\$15,645	\$318,710	\$350,000
2020	Equipment:Acquire <Snow Removal Equipment/Urea Truck/etc.> - Standards	Acquire SRE.	\$13,410	\$13,410	\$273,180	\$300,000
Airport Total:			\$118,455	\$118,455	\$2,413,090	\$2,650,000
CIBECUE - NAVAJO						
2016	Planning:Conduct <Environmental Assessment/Environmental Impact Statement/Feasibility> <Study/Update>	Complete/update 2009 EA for new airport.	\$10,085	\$10,058	\$204,885	\$225,028
2017	Runways:Construct Runway [Includes Relocation] - Standards	Construct Rwy 1/19 (5,100 ft x 75 ft) including bypass Twy (840 ft x 35 ft), connector Twy (300 ft x 35 ft), Apron (15,584 sy) and access road (5,460 ft x 25 ft) - Phase 1 grading and drainage (construct only).	\$303,960	\$303,960	\$6,192,080	\$6,800,000
2018	Runways:Construct Runway [Includes Relocation] - Standards	Construct Rwy (5,100 ft x 75 ft) including bypass Twy (840 ft x 35 ft), connector Twy (300 ft x 35 ft), apron (15,584 sy) and access road (5,460 ft x 25 ft) - Phase 2 paving (construct only).	\$158,685	\$158,685	\$3,232,630	\$3,550,000
2019	Runways:Install Runway Lighting (HIRL, MIRL, TDZ, LAHSO Or CL) - Standards	Install Rwy 1/19 edge lighting and visual aids including utilities -Ph. 3 lighting (construct only).	\$26,820	\$26,820	\$546,360	\$600,000
Airport Total:			\$499,550	\$499,523	\$10,175,955	\$11,175,028
COCHISE COLLEGE - COCHISE						
2016	Obstructions, Light/Mark/Remove (Safety Areas)	Regrade RSA for Rwy 5/23 including the Twy infields as needed.	\$270,000	\$30,000	\$0	\$300,000
2017	APMS - Runway Pavement Preservation	2017 (2012LCD) Crack Seal and Rubberized Asphalt Emulsion Seal Coat RW523CC 10	\$192,644	\$21,405	\$0	\$214,049
Airport Total:			\$462,644	\$51,405	\$0	\$514,049
COCHISE COUNTY - COCHISE						
2017	Apron:Rehabilitate Apron - Reconstruction	Rehabilitate Apron Section 20 (18,300 sy) and section 10 (2,600 sy): Install wind cone and segmented circle.	\$23,691	\$23,691	\$482,618	\$530,000
2018	APMS - Runway Pavement Preservation	2018 (2013LCD) Crack Seal and Rubberized Asphalt Emulsion Seal Coat RW321CO 10	\$228,015	\$25,335	\$0	\$253,350
2019	Buildings:<Construct/Expand/Imp/Modify/Rehabili tate> <Snow Removal Equipment/Chemical Storage Building/etc.> - Standards	Design/Construct modular building (5,000 sf) for airport equipment and chemicals storage.	\$11,175	\$11,175	\$227,650	\$250,000
2020	Weather Reporting Equipment, Install (New)	Install AWOS III P/T with present weather and lightning detection sensors including all utilities and equipment necessary for system operation.	\$225,000	\$25,000	\$0	\$250,000

Airport Projects - by Airport

Airport Name - County

FY	Project Component	Project Description	State Share	Local Share	Federal Share	Project Total
COCHISE COUNTY - COCHISE						
2020	APMS - Taxiway Pavement Preservation	Crack Seal and Rubberized Asphalt Emulsion Seal Coat TWACO 10	\$53,665	\$5,963	\$0	\$59,628
2020	APMS - Apron Pavement Preservation	Thin Asphalt Overlay or PFC A01CO 20	\$160,372	\$17,819	\$0	\$178,191
Airport Total:			\$701,918	\$108,983	\$710,268	\$1,521,169
COLORADO CITY MUNI - MOHAVE						
2016	Planning:Conduct <Environmental Assessment/Environmental Impact Statement/Feasibility> <Study/Update>	EA to acquire approx. 180 acres of BLM land around the Rwy's including Parcel 7: 404-44-005, 25.4 acres; Parcel 8: 404-27-044, 146.9 acres; Parcel 11: 404-44-004, .80 acres; and Parcel 12: 404-44-003, 4.7 acres.	\$12,292	\$12,293	\$250,415	\$275,000
2017	Taxiways:Rehabilitate Taxiway - Reconstruct	Crack seal, fog seal, and remark Twy A (820 ft x 35 ft) and B (2,766 ft x 35 ft) and connecting Twys (2: 245 ft x 35 ft, 3: 191 ft x 35 ft, and 1: 191 ft x 103 ft) (Design & Construct).	\$6,034	\$6,035	\$122,931	\$135,000
2017	APMS - Runway Pavement Preservation	2017 (2012LCD) Crack Seal and Rubberized Asphalt Emulsion Seal Coat RW1129CL 10	\$226,706	\$25,190	\$0	\$251,896
2018	Land:Acquire Land/Easement For Approaches	Acquire approx. 180 acres of BLM land around the Rwy's including Parcel 7: 404-44-005, 25.4 acres; Parcel 8: 404-27-044, 146.9 acres; Parcel 11: 404-44-004, .80 acres; and Parcel 12: 404-44-003, 4.7 acres.	\$4,470	\$4,470	\$91,060	\$100,000
2019	Equipment:Acquire Security Equipment/Install Perimeter Fencing [Not Part 107] - Standards	Install security perimeter fence (approx. 18,266 lf)	\$21,232	\$21,233	\$432,535	\$475,000
2019	Planning:<Conduct/Update> <Airport Master Plan Study {ALP, EA, etc.}>	Conduct a Master Plan study update.	\$11,175	\$11,175	\$227,650	\$250,000
Airport Total:			\$281,909	\$80,396	\$1,124,591	\$1,486,896
COOLIDGE MUNI - PINAL						
2016	Taxiways:<Extend/Widen/Strengthen> Taxiway - Standards	Design Twy B4 approx. 75 ft x 425 ft, Twy B3 approx. 75 ft x 425 ft, Txy A3 approx. 35 ft x 450 ft, Twy A approx. 50 ft x 1,500 ft, Twy B approx. 50 ft x 1,000 ft	\$6,705	\$6,705	\$136,590	\$150,000
2016	Runways:Rehabilitate Runway - Reconstruct	Design Rwy 5-23 rehab./recon. approx. 170 ft x 5,580 ft.	\$11,175	\$11,175	\$227,650	\$250,000
2016	Runways:Install Runway <Vertical/Visual> Guidance System [PAPI/VASI/REIL/ALS/etc.] - Standards	Design/Constr. Rwy 5-23 Vertical/Visual Guidance System, PAPI/REIL, electrical vault upgrade and MIRL	\$37,995	\$37,995	\$774,010	\$850,000
2017	Taxiways:Rehabilitate Taxiway - Reconstruct	Constr. Twy B4 approx. 75 ft x 425 ft, Twy B3 approx. 75 ft x 425 ft, Txy A3 approx. 35 ft x 450 ft, Twy A approx. 50 ft x 1,500 ft, Twy B approx. 50 ft x 1,000 ft.	\$26,820	\$26,820	\$546,360	\$600,000
2017	Runways:Rehabilitate Runway - Reconstruct	Constr. only: Recon./Rehab. Rwy 5-23 (Approx. 150 ft x 5,560 ft)	\$223,500	\$223,500	\$4,553,000	\$5,000,000
2018	Runways:Install Runway <Vertical/Visual> Guidance System [PAPI/VASI/REIL/ALS/etc.] - Standards	Design/Constr. Rwy Vertical/Visual Guidance System, constr. Rwy 17-35 PAPI	\$8,940	\$8,940	\$182,120	\$200,000

Airport Projects - by Airport

Airport Name - County

<i>FY</i>	<i>Project Component</i>	<i>Project Description</i>	<i>State Share</i>	<i>Local Share</i>	<i>Federal Share</i>	<i>Project Total</i>
COOLIDGE MUNI - PINAL						
2018	Equipment:Acquire Security Equipment/Install Perimeter Fencing [Not Part 107] - Standards	Design and constr. security fencing, approx. 16,000 lf	\$28,608	\$28,608	\$582,784	\$640,000
2019	Planning:<Conduct/Update> <Airport Master Plan Study {ALP, EA, etc.}>	Update Master Plan including ALP Update	\$8,940	\$8,940	\$182,120	\$200,000
2020	Apron:Rehabilitate Apron - Reconstruction	Recon. apron.	\$44,700	\$44,700	\$910,600	\$1,000,000
Airport Total:			\$397,383	\$397,383	\$8,095,234	\$8,890,000
COTTONWOOD - YAVAPAI						
2016	Apron:Construct Apron - Standards	Increase height of security fence between the apron and the skydive area.	\$6,705	\$6,705	\$136,590	\$150,000
2016	Apron:Expand/Strengthen Apron - Standards	Apron Repair/Resurfacing	\$84,930	\$84,930	\$1,730,140	\$1,900,000
2016	New Airports:Construct New Airport - Standards	ALP Narrative and Master plan update	\$5,588	\$5,587	\$113,825	\$125,000
2017	Other:<Construct/Improve/Repair> <Fuel Farm/Utilities> [MAP] - Other	Environmental Assessment (EA) for Jet A fuel tank	\$6,705	\$6,705	\$136,590	\$150,000
2017	Runways:Extend Runway- Capacity	Design and implement declared distances and extend taxiway A as needed, per revised ALP.	\$14,304	\$14,304	\$291,392	\$320,000
2018	Other:Environmental Mitigation	Environment assessment (EA), design and construct aircraft wash rack	\$8,940	\$8,940	\$182,120	\$200,000
2019	APMS - Runway Pavement Preservation	2019 (2014LCD) Crack Seal and Rubberized Asphalt Emulsion Seal Coat RW1432CT 10	\$164,356	\$18,262	\$0	\$182,618
2019	Taxiways:Rehabilitate Taxiway - Reconstruct	Design and Construct Taxiway A Pavement Preservation	\$9,387	\$9,387	\$191,226	\$210,000
2019	Runways:Extend Runway- Capacity	EA for Land Acquisition	\$10,728	\$10,728	\$218,544	\$240,000
2019	Runways:Extend Runway- Capacity	Design/Construct Runway 32 Extension	\$16,316	\$16,315	\$332,369	\$365,000
2019	Runways:Extend Runway- Capacity	Design, EA for extension of Runway 32	\$3,576	\$3,576	\$72,848	\$80,000
Airport Total:			\$331,535	\$185,439	\$3,405,644	\$3,922,618
DOUGLAS MUNI - COCHISE						
2017	Runway, Rehabilitate	Construction Phase 2 of Rehabilitation of Rwy 3/21 (5760 ft x 75 ft) utilizing CMAR project delivery method.	\$1,350,000	\$150,000	\$0	\$1,500,000
2019	Security Fencing - Chain Link, Install (New)	Installation of approximately 5,280 linear feet (1 mile) of airport perimeter security fencing	\$270,000	\$30,000	\$0	\$300,000
2020	Security Fencing - Chain Link, Install (New)	Install 5,280 linear feet (1 mile) of perimeter security fencing.	\$270,000	\$30,000	\$0	\$300,000
Airport Total:			\$1,890,000	\$210,000	\$0	\$2,100,000

Airport Projects - by Airport

Airport Name - County

FY	Project Component	Project Description	State Share	Local Share	Federal Share	Project Total
ELOY MUNI - PINAL						
2016	Airport Drainage, Improve	Design and constr. misc. drainage improvements as determined by new Airport Drainage Study. This would only include projects that could receive CatEx.	\$180,000	\$20,000	\$0	\$200,000
2016	Taxiways:Install Taxiway Lighting (e.g., SMGCS, Reflectors, MITL) - Standards	Misc. improvements to Twy lighting, signage, and markings.	\$6,705	\$6,705	\$136,590	\$150,000
2017	Other:Improve Airport <Drainage/Erosion Control/Miscellaneous Improvements> - Standards	Design of misc. drainage improvements as determined by Airport Drainage Study. This would only include projects that could receive CatEx.	\$2,235	\$2,235	\$45,530	\$50,000
2017	Planning:Conduct <Environmental Assessment/Environmental Impact Statement/Feasibility> <Study/Update>	Prepare an EA for a 500 ft extension to Rwy 2, including land acquisition (approx. 40 acres). APN 404-05-009B	\$13,410	\$13,410	\$273,180	\$300,000
2017	Land:Acquire <Land/Easement> For Development/Relocation	Acquire approx. 15 Acres for Twy relocation and associated drainage improvements APN 404-05-010J; APN 402-260-03A	\$13,410	\$13,410	\$273,180	\$300,000
2018	Other:Improve Airport <Drainage/Erosion Control/Miscellaneous Improvements> - Standards	Constr. misc. drainage improvements including approx. 2,600 LF of drainage channel and a box culvert as determined by Airport Drainage Study (Ph. 1). This would include projects which have received a FONSI from FAA.	\$44,700	\$44,700	\$910,600	\$1,000,000
2018	Taxiways:Construct Taxiway [Includes Relocation]	Relocation of Twy A (17,000 sy) to meet or exceed current FAA design standards. The project also includes new MITL Ph. 2.	\$111,750	\$111,750	\$2,276,500	\$2,500,000
2018	APMS - Runway Pavement Preservation	Crack Seal and Rubberized Asphalt Emulsion Seal Coat RW220EM 10	\$140,727	\$15,636	\$0	\$156,363
2018	Security Fencing - Chain Link, Install (New)	Installation of approx. 3,600 lf of security fence (chain link) including 2 new automatic vehicle gates.	\$90,000	\$10,000	\$0	\$100,000
2019	Other:Improve Airport <Drainage/Erosion Control/Miscellaneous Improvements> - Standards	Constr. of misc. drainage improvements including approx. 2,000 LF of drainage channel and culverts as determined by Airport Drainage Study (Ph. 2). This would include projects which have received a FONSI from FAA.	\$44,700	\$44,700	\$910,600	\$1,000,000
2020	Land:Acquire <Land/Easement> For Development/Relocation	Reimbursement for the acquisition of approx. 20 acres of land for the extension of Rwy 4 (APN 404-05-010J).	\$17,880	\$17,880	\$364,240	\$400,000
Airport Total:			\$665,517	\$300,426	\$5,190,420	\$6,156,363
ERIC MARCUS MUNI - PIMA						
2017	Other:Install <Guidance Signs/ Runway Incursion Caution Bars> [Non Part 139 CS] - Statutory Emphasis Programs	Installation of lighted airfield directional signage at both Rwy/Twy intersections.	\$1,788	\$1,788	\$36,424	\$40,000
2017	Runways:Install Runway Lighting (HIRL, MIRL) [Non Part 139 CS] - Statutory Emphasis Programs	Installation of REILs on both Rwys.	\$1,788	\$1,788	\$36,424	\$40,000

Airport Projects - by Airport

Airport Name - County

<i>FY</i>	<i>Project Component</i>	<i>Project Description</i>	<i>State Share</i>	<i>Local Share</i>	<i>Federal Share</i>	<i>Project Total</i>
ERIC MARCUS MUNI - PIMA						
2017	Runways:Install Runway Lighting (HIRL, MIRL) [Non Part 139 CS] - Statutory Emphasis Programs	Replace 8 extg. lights with upgraded, low-profile, bi-directional units that conform with AC No.150/5345-46B.	\$894	\$894	\$18,212	\$20,000
2018	Apron:Rehabilitate Apron - Reconstruction	Design joint seal repair and replacement for approx. 96,000 linear feet of apron surrounding the extg. hangars.	\$1,564	\$1,565	\$31,871	\$35,000
2019	Apron:Rehabilitate Apron - Reconstruction	Repair & replace as required, joint seal for approx. 96,000 linear feet of apron surrounding the extg. hangars.	\$6,705	\$6,705	\$136,590	\$150,000
2020	Equipment:Acquire Security Equipment/Install Perimeter Fencing [Not Part 107] - Standards	Design for the installation of 17,500 lf of 6 ft chain link security fencing with three-strand barbed wire and security gates.	\$2,235	\$2,235	\$45,530	\$50,000
Airport Total:			\$14,974	\$14,975	\$305,051	\$335,000
ERNEST A. LOVE FIELD - YAVAPAI						
2016	Taxiways:Install Taxiway Lighting (MITL) [Required By Part 139] - Safety/Security	Constr. Twy E MITL, parallel to Rwy 12/30, 4,400 lf; upgrade and relocate the extg. vault including upgrading emergency generator, install segmented circle and lighted wind cone.	\$90,000	\$90,000	\$3,420,000	\$3,600,000
2016	Runways:Install Runway Lighting (HIRL, MIRL, TDZ, LAHSO Or CL) - Standards	Constr. MIRL, signage upgrades and distance remaining signs for Rwy 3R/21L and 3L/21R.	\$60,375	\$60,375	\$2,294,250	\$2,415,000
2016	Buildings:<Construct/Expand/Improve/Modify/Rehabilitate> Aircraft Rescue & Fire Fighting Building [Pt. 139 Only] - Safety/Security	Design 12,000 sf ARFF/ops/maintenance facility mid-field south of Twy D.	\$12,500	\$12,500	\$475,000	\$500,000
2016	Obstructions, Light/Mark/Remove (Safety Areas)	Detailed CatEx documentation for mitigation of obstructions to FAR Part 77 surfaces. (Inc objects located on airport & City-owned land, & public rights-of-way). Required prior to design of project so all potential environmental concerns are identified.	\$32,400	\$3,600	\$0	\$36,000
2016	Runway MIRL/HIRL, Install	Design MIRL, signage upgrades and distance remaining signs for Rwy 3R/21L and 3L/21R.	\$151,200	\$16,800	\$0	\$168,000
2016	Runway Vertical/Visual Guidance System, Install/Upgrade	Construct upgrades for RW 12/30 (PAPI and REIL both ends), and RW 3R/21L (PAPI both ends).	\$193,500	\$21,500	\$0	\$215,000
2016	Planning:<Conduct/Update> <Airport Master Plan Study {ALP, EA, etc.}>	Conduct update of relevant portions of the 2010 Airport Master Plan, and to address the Deviations to Standards that have been identified on the latest ALP update (2013).	\$1,500	\$1,500	\$57,000	\$60,000
2017	Other:Improve Airport <Drainage/Erosion Control/Miscellaneous Improvements> - Standards	Constr. security upgrades to include 29,000 lf of perimeter fencing, with cameras and access control devices.	\$37,500	\$37,500	\$1,425,000	\$1,500,000
2017	Runway Vertical/Visual Guidance System, Install/Upgrade	Design for construction of upgrades for Rwy 3L/21R (PAPI both ends).	\$36,000	\$4,000	\$0	\$40,000

Airport Projects - by Airport

Airport Name - County

FY	Project Component	Project Description	State Share	Local Share	Federal Share	Project Total
ERNEST A. LOVE FIELD - YAVAPAI						
2017	Obstructions, Light/Mark/Remove (Safety Areas)	Design/Constr. Mitigation of on-airport obstructions to FAR Part 77 surfaces, approx 150 obstructions, 60 building points, 40+ trees & others as determined by FAA. (Includes objects on airport & City-owned land, & public ROW)	\$360,000	\$40,000	\$0	\$400,000
2017	Land For Protection (Safety Areas), Acquire	Ph.1 - EA for acquisition of development & approach protection land for Rwy 21L Extension to 10,570 ft (138 ac of APN 103-01-021G) and RWwy12/30 RPZs (8.4 ac APNs 102-04-001A, 102-03-008, 102-06-001 and 102-06-006).	\$315,000	\$35,000	\$0	\$350,000
2018	APMS - Runway Pavement Preservation	2018 (2013LCD) Crack Seal and Rubberized Asphalt Emulsion Seal Coat RW3R21LPR 20	\$29,051	\$3,228	\$0	\$32,279
2018	Runway Vertical/Visual Guidance System, Install/Upgrade	Constr. upgrades for Rwy. 3L/21R (PAPI both ends).	\$67,500	\$75,000	\$0	\$142,500
2018	APMS - Taxiway Pavement Preservation	Thin Asphalt Overlay or PFC TWAPR 10	\$280,436	\$31,160	\$0	\$311,596
2018	Taxiway, Construct (New)	Design realign/relocate parallel Twy C - offset to the north to provide adequate distance from Rwy 3R-21L (6,800 ft x 50 ft).	\$810,000	\$90,000	\$0	\$900,000
2018	APMS - Taxiway Pavement Preservation	Thin Asphalt Overlay or PFC TWKPR 10	\$39,542	\$4,393	\$0	\$43,935
2018	Buildings:<Construct/Expand/Improve/Modify/Rehabilitate> Aircraft Rescue & Fire Fighting Building [Pt. 139 Only] - Safety/Security	Constr. 12,000 sf ARFF facility mid-field south of Twy D.	\$75,000	\$75,000	\$2,850,000	\$3,000,000
2019	Taxiways:Construct Taxiway [Includes Relocation]	Constr. Ph. 1 to realign/relocate parallel Twy C - offset to the north to provide adequate distance from Rwy 3R-21L (6,800 ft x 50 ft). Ph 1 3,400 ft of Twy C.	\$112,500	\$112,500	\$4,275,000	\$4,500,000
2019	Airport Buildings, Construct	Environmental Assessment based on the site selection study for location of new ATCT; conduct EA.	\$292,500	\$32,500	\$0	\$325,000
2019	Land:Acquire <Land/Easement> For Development/Relocation	Acquisition of 138 ac for Rwy 21L Extension to 10,570 ft (138 ac of APN 103-01-021G) and 8.4 ac for Rwy 12/30 RPZs APNs 102-04-001A, 102-03-008, 102-06-001 and 102-06-006.	\$67,500	\$67,500	\$2,565,000	\$2,700,000
2019	Airport Buildings, Construct	Environmental Assessment based on the site selected, and preliminary layout of the overall terminal, ramp, auto parking, and all associated site improvements.	\$820,000	\$80,000	\$0	\$900,000
2020	Runway, Extend	Design Rwy 12/30 shift (approx. 150 ft ESE) for RSA requirements to include paving Rwy/Twy shoulders, realigning Twy F west of Twy C, Twy E lighting, drainage improvements between Twy F and Rwy 12/30 in the RSA.	\$585,000	\$65,000	\$0	\$650,000
2020	Taxiways:Construct Taxiway [Includes Relocation]	Construct 2nd phase to realign/relocate parallel TWY C - offset to the north to provide adequate distance from Runway 3R-21L (6,800 ft x 50 ft). This phase includes the NE 3,400 ft of the TWY.	\$112,500	\$112,500	\$4,275,000	\$4,500,000

Airport Projects - by Airport

Airport Name - County

FY	Project Component	Project Description	State Share	Local Share	Federal Share	Project Total
ERNEST A. LOVE FIELD - YAVAPAI						
Airport Total:			\$4,581,504	\$1,071,556	\$21,636,250	\$27,289,310
FALCON FLD - MARICOPA						
2016	Planning:<Conduct/Update> <Airport Master Plan Study {ALP, EA, etc.}>	Update airport master plan, including Airport Layout Plan (ALP).	\$13,410	\$13,410	\$273,180	\$300,000
2016	Runway, Extend	Constr. Blast Pads (100ft x 75ft) on Rwy 4L/22R.	\$425,352	\$47,261	\$0	\$472,613
2016	Taxiways:Construct Taxiway [Includes Relocation]	Realign & constr. Twy C between Rwy 22R and 22L ends (700ft x 50ft).	\$77,928	\$77,927	\$1,587,492	\$1,743,347
2017	Taxiways:Construct Taxiway - Capacity	Constr. acute angle Twys for Rwy 4L/22R.	\$49,522	\$49,522	\$1,008,829	\$1,107,873
2017	Other:Improve Airport <Drainage/Erosion Control/Miscellaneous Improvements> - Standards	Design installation of rock in safety areas for Rwys 4R/22L, 4L/22R, and Twys D & E.	\$5,364	\$5,364	\$109,272	\$120,000
2018	Other:<Light/Mark/Remove> Obstructions [Hazard Only e.g., Approaches] - Safety/Security	EA for the removal of trees in RPZ of Rwys 4R & 4L.	\$7,070	\$7,070	\$144,029	\$158,169
2018	Other:Improve Airport <Drainage/Erosion Control/Miscellaneous Improvements> - Standards	Install rock in safety areas for Rwys 4R/22L, 4L/22R, and Twys D & E.	\$55,875	\$55,875	\$1,138,250	\$1,250,000
2019	Taxiways:Construct Taxiway - Capacity	Design Eastside Twy (6,931 SY) from T-Hangar apron east.	\$22,320	\$22,320	\$454,691	\$499,331
2019	Other:Improve Airport <Drainage/Erosion Control/Miscellaneous Improvements> - Standards	Install rock in safety areas of Rwys 4R/22L, 4L/22R, and Twys D & E.	\$55,875	\$55,875	\$1,138,250	\$1,250,000
2019	Other:<Light/Mark/Remove> Obstructions [Hazard Only e.g., Approaches] - Safety/Security	Removal of trees from the approach ends Rwy 4R & 4L.	\$47,992	\$47,992	\$977,666	\$1,073,650
2019	APMS - Runway Pavement Preservation	2019 (2014LCD) Crack Seal and Rubberized Asphalt Emulsion Seal Coat RW4R22LMF 10	\$271,894	\$30,211	\$0	\$302,105
2020	Land For Protection (Safety Areas), Acquire	Acquire easement for part of Rwy 22R approach.	\$491,839	\$54,649	\$0	\$546,488
2020	Taxiways:Construct Taxiway - Capacity	Construct Eastside Twy (6,931) from T-Hangar apron east	\$126,481	\$126,481	\$2,576,586	\$2,829,548
Airport Total:			\$1,650,922	\$593,957	\$9,408,245	\$11,653,124
FLAGSTAFF PULLIAM - COCONINO						
2016	Runways:Rehabilitate Runway - Reconstruct	Mill and overlay Rwy 3/21 (150 ft x 8,800 ft) including remarking.	\$147,510	\$147,510	\$3,004,980	\$3,300,000
2017	Planning:Conduct <Environmental Assessment/Environmental Impact Statement/Feasibility> <Study/Update>	EA for Heliport & Land Acq., Grade & Pave Perimeter Rd inside the perimeter fence	\$41,348	\$41,347	\$842,305	\$925,000
2017	Heliport, Construct	Design, pave, and constr. approx. 141,000 sf PCC heliport including utility relocation and storm water tie ins.	\$1,620,000	\$180,000	\$0	\$1,800,000
2017	APMS - Runway Pavement Preservation	Mill and Replace Porous Friction Course RW321FG 20	\$597,513	\$66,390	\$0	\$663,903

Airport Projects - by Airport

Airport Name - County

FY	Project Component	Project Description	State Share	Local Share	Federal Share	Project Total
FLAGSTAFF PULLIAM - COCONINO						
2018	Ground Transportation:<Construct/Expand/Improve/Modify/Rehabilitate> Access Road - Other	Rehab. Pulliam Dr. from John Wesley Powell (JWP) Blvd around in front of the terminal building and back to where the road reconnects with itself approaching JWP is approximately 2,500 lf of single/double lane pavement	\$156,450	\$156,450	\$3,187,100	\$3,500,000
2019	Land:Acquire Land/Easement For Approaches	Purchase 167.89 acres of Airport land, which contains RPZ, Avigation Easement, Lake Mary Park land and the Water Treatment Plant. (Section 4, T.20 N.,R. 7E and Section 33 T. 21 N.,R. 7E)	\$299,490	\$299,490	\$6,101,020	\$6,700,000
2019	APMS - Taxiway Pavement Preservation	2019(2014ST) Mill and Replace Porous Friction Course TWWFG 20	\$207,998	\$23,111	\$0	\$231,109
2020	Other:<Construct/Rehabilitate> Parking Lot [Non Revenue Producing-Non Hub/MAP] - Other	Constr. Ph. 1 multi-level non-revenue parking structure to increase passenger parking capacity at the airport terminal (approx. 350 spaces).	\$178,800	\$178,800	\$3,642,400	\$4,000,000
2020	APMS - Runway Pavement Preservation	Crack Seal and Rubberized Asphalt Emulsion Seal Coat RW321FG 20	\$134,328	\$14,925	\$0	\$149,253
Airport Total:			\$3,383,437	\$1,108,023	\$16,777,805	\$21,269,265
GILA BEND MUNI - MARICOPA						
2016	Taxiways:<Extend/Widen/Strengthen> Taxiway - Standards	Demolish Twys C & D. Constr. new Twy C at midpoint between Twys C & D, install MITLs, relocate signage, stripe.	\$8,381	\$8,381	\$170,738	\$187,500
2017	Apron:Construct Apron - Standards	Constr. two hold bays 160 ft x95 ft (3,300 sy), modify MITLs and striping.	\$18,439	\$18,439	\$375,622	\$412,500
2017	APMS - Runway Pavement Preservation	2017 (2012LCD) Crack Seal and Rubberized Asphalt Emulsion Seal Coat RW422GB 10	\$183,103	\$20,345	\$0	\$203,448
2018	Runways:Install Runway <Vertical/Visual> Guidance System [PAPI/VASI/REIL/ALS/etc.] - Standards	Design and install REILs on both ends of Rwy 4/22.	\$4,470	\$4,470	\$91,060	\$100,000
2019	Other:<Install/Rehabilitate> Airport Beacons [Required By Part 139] - Safety/Security	Purchase and install a new LED rotating beacon on extg. tower.	\$7,599	\$7,599	\$154,802	\$170,000
2020	Equipment:Install Weather Reporting Equipment {Describe, e.g., AWOS } - Standards	Install new AWOS weather reporting station.	\$8,940	\$8,940	\$182,120	\$200,000
Airport Total:			\$230,932	\$68,174	\$974,342	\$1,273,448
GLENDALE MUNI - MARICOPA						
2016	Ground Transportation:<Construct/Expand/Improve/Modify/Rehabilitate> Access Road - Other	Design & Constr. Main Airport Access/Public Circulation Road Rehab. (approximately 5,500 Ssy of pavement recon., median realignment, and installation of traffic signals).	\$16,539	\$16,539	\$336,922	\$370,000
2016	Apron:Rehabilitate Apron - Reconstruction	Design & Construct Pavement Maintenance on the North Apron (approximately 115,200 SY)	\$42,465	\$42,465	\$865,070	\$950,000
2016	Land For Protection (Safety Areas), Acquire	Land Acquisition, Conair (approximately 40 acres). Land acquisition to be phased.	\$1,350,000	\$150,000	\$0	\$1,500,000

Airport Projects - by Airport

Airport Name - County

FY	Project Component	Project Description	State Share	Local Share	Federal Share	Project Total
GLENDALE MUNI - MARICOPA						
2017	Planning:<Conduct/Update> <Airport Master Plan Study {ALP, EA, etc.}>	Part 150 Update	\$6,705	\$6,705	\$136,590	\$150,000
2017	Apron:Rehabilitate Apron - Reconstruction	Design & recon. Pavement Maintenance recon the South Apron (45,400 SY)	\$44,700	\$44,700	\$910,600	\$1,000,000
2017	Land For Protection (Safety Areas), Acquire	Land Acquisition, Conair (approximately 40 acres). Land acquisition to be phased.	\$1,499,999	\$166,667	\$0	\$1,666,666
2018	Land For Protection (Safety Areas), Acquire	Land Acquisition, Conair (approximately 40 acres). Land acquisition to be phased.	\$1,499,999	\$16,667	\$0	\$1,516,666
2018	Apron:Construct Apron - Capacity	Design Southwest Public Apron (approximately 85,300 sy)	\$11,175	\$11,175	\$227,650	\$250,000
2019	Land For Protection (Safety Areas), Acquire	Land Acquisition, Conair (approximately 40 acres). Land Acquisition to be phased.	\$1,499,999	\$16,667	\$0	\$1,516,666
2019	APMS - Taxiway Pavement Preservation	Thin Asphalt Overlay or PFC TWAGL 10	\$617,428	\$68,603	\$0	\$686,031
2019	Apron:Construct Apron - Capacity	Construct Southwest Public Apron, Phase I (approximately 46,400 SY)	\$55,875	\$55,875	\$1,138,250	\$1,250,000
2020	Apron:Construct Apron - Capacity	Construct Southwest Public Apron, Ph. 2 (approximately 38,900 sy)	\$55,875	\$55,875	\$1,138,250	\$1,250,000
2020	Land For Protection (Safety Areas), Acquire	Land Acquisition, Conair (approximately 40 acres). Land acquisition to be phased.	\$1,499,999	\$16,667	\$0	\$1,516,666
2020	Planning:Conduct <Environmental Assessment/Environmental Impact Statement/Feasibility> <Study/Update>	EA for Channelization of New River	\$8,940	\$8,940	\$182,120	\$200,000
Airport Total:			\$8,209,698	\$677,545	\$4,935,452	\$13,822,695
GRAND CANYON NATIONAL PARK - COCONINO						
2016	Terminal Development:<Improve/Modify/Rehabilitate> Terminal Building - Standards	Rehabilitate existing 8,500 sf terminal and 2,000 sf garage/baggage area to meet ADA standards, and meet standards for TSA security screening, secured lounge and baggage screening and handling.	\$134,100	\$134,100	\$2,731,800	\$3,000,000
2016	Taxiways:Rehabilitate Taxiway - Reconstruct	Rehabilitate existing 8,999 ft x 75 ft twy, five approaches, and 65,000 sy apron.	\$44,700	\$44,700	\$910,600	\$1,000,000
2016	Runways:Rehabilitate Runway <Lighting/Electrical Vault>	Install new airfield lighting, signage, apron lighting rehabilitate, upgrades to the electrical vault and segmented circles and construct 25 ft shoulders to 8,999 ft Rwy 3/21 and twy.	\$223,500	\$223,500	\$4,553,000	\$5,000,000
2016	Equipment:Acquire Aircraft Deicing Equipment - Standards	Acquire deicing equipment to service aircraft up to and including MD80, 737 and 767.	\$17,880	\$17,880	\$364,240	\$400,000
2017	Ground Transportation:<Construct/Expand/Improve/Modify/Rehabilitate> Service Road - Other	Upgrade perimeter road on east and west side. Dimensions are 18,800 ft x 20 ft.	\$134,100	\$134,100	\$2,731,800	\$3,000,000
2017	Other:Environmental Mitigation	Conduct Wildlife Mitigation measures identified in the Wildlife Hazard Assessment. The corrective actions and determination should be completed in the assessment.	\$89,400	\$89,400	\$1,821,200	\$2,000,000

Airport Projects - by Airport

Airport Name - County

FY	Project Component	Project Description	State Share	Local Share	Federal Share	Project Total
GRAND CANYON NATIONAL PARK - COCONINO						
2018	Runways:<Apply Friction Course/Groove> Runway - Statutory Emphasis Programs	Conduct milling, overlay and re-grooving of Rwy 3/21 (8,999 ft x 150 ft).	\$223,500	\$223,500	\$4,553,000	\$5,000,000
2018	Heliport:<Construct/Expand/Improve/Modify/Rehabilitate> Helipad/Heliport - Standards	Construct a 50 X 100 ft helipad south of the Apron slightly north of the ARFF building.	\$67,050	\$67,050	\$1,365,900	\$1,500,000
2019	Equipment:Acquire Security Equipment/Install Fencing [Required By Part 107] - Safety/Security	Design and construct 1,000 lf of security fencing and gates for TSA security. Install security access controls locks at four access points.	\$8,940	\$8,940	\$182,120	\$200,000
2019	Equipment:Acquire Security Equipment/Install Fencing [Required By Part 107] - Safety/Security	Install 37,000 lf of fencing on the exterior of the airport and eight gates	\$134,100	\$134,100	\$2,731,800	\$3,000,000
2019	Planning:Conduct <Environmental Assessment/Environmental Impact Statement/Feasibility> <Study/Update>	Conduct EA on the various sources of water identified in the master plan.	\$22,350	\$22,350	\$455,300	\$500,000
2020	APMS - Apron Pavement Preservation	Thin Asphalt Overlay or PFC A01GC 10	\$151,819	\$16,869	\$0	\$168,688
2020	Equipment:Acquire <Snow Removal Equipment/Urea Truck/etc.> - Standards	Acquire a new snow blower.	\$6,705	\$6,705	\$136,590	\$150,000
2020	Equipment:Acquire <Snow Removal Equipment/Urea Truck/etc.> - Standards	Aquire two new snow plows.	\$13,410	\$13,410	\$273,180	\$300,000
Airport Total:			\$1,271,554	\$1,136,604	\$22,810,530	\$25,218,688
GRAND CANYON WEST - MOHAVE						
2016	APMS - Runway Pavement Preservation	Crack Seal and Rubberized Asphalt Emulsion Seal Coat RW1735PS 10	\$169,510	\$18,835	\$0	\$188,345
2016	Planning:Conduct <Environmental Assessment/Environmental Impact Statement/Feasibility> <Study/Update>	EA for new terminal building (+/- 42,000 sf) on west side of Rwy.	\$29,055	\$29,055	\$591,890	\$650,000
2018	Terminal Development:Construct Terminal Building - Capacity	Terminal building (+/-42,000 sf) on west side of Rwy (design only).	\$67,050	\$67,050	\$1,365,900	\$1,500,000
2020	APMS - Apron Pavement Preservation	Thin Asphalt Overlay or PFC A02PS 10	\$72,558	\$8,062	\$0	\$80,620
2020	Terminal Development:Construct Terminal Building - Capacity	Construct terminal building (+/- 42,000 sf) on west side of Rwy 17/35 (construct only). Phase 1.	\$357,600	\$357,600	\$7,284,800	\$8,000,000
2020	APMS - Taxiway Pavement Preservation	Crack Seal and Rubberized Asphalt Emulsion Seal Coat TWAPS 10	\$100,995	\$11,222	\$0	\$112,217
2020	APMS - Taxiway Pavement Preservation	Crack Seal and Rubberized Asphalt Emulsion Seal Coat TWAPS 20	\$18,001	\$2,000	\$0	\$20,001
2020	Terminal, Construct/Expand	Construct terminal building (+/- 42,000 sf) on west side of Rwy 17/35 (construct only). Phase 1.	\$1,800,000	\$200,000	\$0	\$2,000,000
Airport Total:			\$2,614,769	\$693,824	\$9,242,590	\$12,551,183

Airport Projects - by Airport

Airport Name - County

FY	Project Component	Project Description	State Share	Local Share	Federal Share	Project Total
GREENLEE COUNTY - GREENLEE						
2016	Land:Acquire Land/Easement For Approaches	Acquire 3.35 acres for Runway 25 RPZ (State Land, no Parcel ID available).	\$749	\$748	\$15,253	\$16,750
2016	Land:Acquire Land/Easement For Approaches	Acquire 2.7 acres for Runway 7 RPZ (State Land, no Parcel ID available).	\$603	\$604	\$12,293	\$13,500
2016	Land:Acquire <Land/Easement> For Development/Relocation	Acquire 18 acres for airport entrance roads (State Land, Parcel ID #300-16-004 & 005).	\$4,023	\$4,023	\$81,954	\$90,000
2016	Obstructions, Light/Mark/Remove (Safety Areas)	Obstruction Removal (overhead electrical; remove 7 poles and place 1,800 lf of electrical line underground).	\$180,000	\$20,000	\$0	\$200,000
2019	APMS - Runway Pavement Preservation	2019 (2014LCD) Crack Seal and Rubberized Asphalt Emulsion Seal Coat RW725GR 10	\$181,833	\$20,204	\$0	\$202,037
2020	APMS - Taxiway Pavement Preservation	Crack Seal and Rubberized Asphalt Emulsion Seal Coat TWAGR 20	\$45,376	\$5,042	\$0	\$50,418
Airport Total:			\$412,584	\$50,621	\$109,500	\$572,705
H.A. CLARK MEMORIAL FIELD - COCONINO						
2016	Apron:Rehabilitate Apron - Reconstruction	Reconstruct Apron (approx. 4,500 sy) Ph. 1.	\$22,350	\$22,350	\$455,300	\$500,000
2016	Planning:<Conduct/Update> <Airport Master Plan Study {ALP, EA, etc.}>	Complete EA for RPZ Land Acquisition	\$11,175	\$11,175	\$227,650	\$250,000
2016	APMS - Runway Pavement Preservation	RW1836WI 10	\$887,034	\$98,559	\$0	\$985,593
2017	Land:Acquire Land/Easement For Approaches	Acquire approx. 132 acres of land for Rwy 18/36 RPZ protection. EA completed,however FONZI not issued due to lack of response from USFS.	\$23,468	\$23,467	\$478,065	\$525,000
2017	Apron:Rehabilitate Apron - Reconstruction	Reconstr. Apron (approx. 4,500 sy).	\$33,525	\$33,525	\$682,950	\$750,000
2018	Planning:<Conduct/Update> <Airport Master Plan Study {ALP, EA, etc.}>	Update Airport Master Plan.	\$7,822	\$7,823	\$159,355	\$175,000
2019	Auto Parking, Construct	Design expanded non-revenue auto parking (approx. 1,200 sy).	\$67,500	\$75,000	\$0	\$142,500
2019	Apron, Construct (New)	Design GA apron (approx. 4,000 sy, including relocated helipad(s)).	\$112,500	\$12,500	\$0	\$125,000
2020	APMS - Apron Pavement Preservation	Crack Seal and Rubberized Asphalt Emulsion Seal Coat A02WI 30	\$1,714	\$190	\$0	\$1,904
2020	APMS - Taxiway Pavement Preservation	Crack Seal and Rubberized Asphalt Emulsion Seal Coat TWAWI 10	\$177,909	\$19,768	\$0	\$197,677
2020	Auto Parking, Construct	Construct non-revenue auto parking (approx. 1,200 sy) Ph. 1.	\$225,000	\$25,000	\$0	\$250,000
2020	APMS - Apron Pavement Preservation	Crack Seal and Rubberized Asphalt Emulsion Seal Coat A02WI 20	\$9,533	\$1,059	\$0	\$10,592
2020	Land:Acquire <Land/Easement> For Development/Relocation	Acquire approx. 101 acres of land future development. Parcel numbers are not available due to federal ownership.	\$22,350	\$22,350	\$455,300	\$500,000
2020	Apron:Construct Apron - Capacity	Construct GA Apron Ph.1 (approx. 4,000 sy).	\$33,525	\$33,525	\$682,950	\$750,000

Airport Projects - by Airport

Airport Name - County

FY	Project Component	Project Description	State Share	Local Share	Federal Share	Project Total
H.A. CLARK MEMORIAL FIELD - COCONINO						
Airport Total:			\$1,635,405	\$386,291	\$3,141,570	\$5,163,266
HOLBROOK MUNI - NAVAJO						
2016	Airport Drainage, Improve	RSA 3/21 grading (7,178 ft x 120 ft).	\$162,000	\$18,000	\$0	\$180,000
2016	Other:<Light/Mark/Remove> Obstructions [Hazard Only e.g., Approaches] - Safety/Security	Relocate fuel farm adjacent to access road.	\$16,986	\$16,986	\$346,028	\$380,000
2017	Runways:Rehabilitate Runway - Reconstruct	Crack seal, fog seal, remark Rwy 3/21 (6,698 ft x 75 ft) and apron (33,600 sy).	\$11,175	\$11,175	\$227,650	\$250,000
2018	Planning:Conduct <Environmental Assessment/Environmental Impact Statement/Feasibility> <Study/Update>	EA for Rwy 3/21 shift (1,302 ft x 75 ft).	\$10,728	\$10,728	\$218,544	\$240,000
Airport Total:			\$200,889	\$56,889	\$792,222	\$1,050,000
KAYENTA - NAVAJO						
2016	APMS - Runway Pavement Preservation	Thin Asphalt Overlay or PFC RW523KY 10	\$721,141	\$80,127	\$0	\$801,268
2016	Buildings:<Construct/Expand/Imp/Modify/Rehabilitate> <Snow Removal Equipment/Chemical Storage Building/etc.> - Standards	Construct SRE Building (60ft x 40ft) (Design Only)	\$2,235	\$2,235	\$45,530	\$50,000
2019	Buildings:<Construct/Expand/Imp/Modify/Rehabilitate> <Snow Removal Equipment/Chemical Storage Building/etc.> - Standards	SRE Building (60ft x 40ft) (Construct Only)	\$17,880	\$17,880	\$364,240	\$400,000
2020	Apron:Construct Apron - Capacity	Construct Apron northeast of midfield apron (17,900sy)	\$24,585	\$24,585	\$500,830	\$550,000
Airport Total:			\$765,841	\$124,827	\$910,600	\$1,801,268
KINGMAN - MOHAVE						
2016	Land For Protection (Safety Areas), Acquire	Land Acquisition for Rwy 21 RPZ (approximately 28 acres, Parcel ID #310-01-073).	\$1,800,000	\$200,000	\$0	\$2,000,000
2016	Land:Acquire Land/Easement For Approaches	Land Acquisition for Rwy 21 RPZ (approximately 28 acres, Parcel ID #310-01-073).	\$50,000	\$50,000	\$1,900,000	\$2,000,000
2016	Planning:<Conduct/Update> <Airport Master Plan Study {ALP, EA, etc.}>	ALP Update & Narrative.	\$3,750	\$3,750	\$142,500	\$150,000
2017	APMS - Runway Pavement Preservation	2017 (2012LCD) Crack Seal and Rubberized Asphalt Emulsion Seal Coat RW321KG 10	\$479,930	\$53,326	\$0	\$533,256
2017	Planning:Conduct <Environmental Assessment/Environmental Impact Statement/Feasibility> <Study/Update>	Conduct EA for Infield Drainage, Twy B and Perimeter Road.	\$6,250	\$6,250	\$237,500	\$250,000
2018	APMS - Taxiway Pavement Preservation	Thin Asphalt Overlay or PFC TWAKG 10	\$219,505	\$24,389	\$0	\$243,894
2018	Taxiway, Rehabilitate	Design Twy Bravo Reconstruction (approximately 2,200 ft x 75 ft).	\$90,000	\$10,000	\$0	\$100,000
2019	Taxiways:Rehabilitate Taxiway - Reconstruct	Construct Twy Bravo Reconstruction (approximately 2,200 ft x 75 ft).	\$57,500	\$57,500	\$2,185,000	\$2,300,000

Airport Projects - by Airport

Airport Name - County

FY	Project Component	Project Description	State Share	Local Share	Federal Share	Project Total
KINGMAN - MOHAVE						
2020	Ground Transportation:<Construct/Expand/Improve/Modify/Rehabilitate> Service Road - Other	Construct Airfield Perimeter Road (approximately 23,000 ft x 15 ft).	\$50,000	\$50,000	\$1,900,000	\$2,000,000
Airport Total:			\$2,756,935	\$455,215	\$6,365,000	\$9,577,150
LAKE HAVASU CITY - MOHAVE						
2016	Other:<Light/Mark/Remove> Obstructions [Hazard Only e.g., Approaches] - Safety/Security	Design & Construct the replacements of existing WPPA Mountain & Transmission line obstruction lights.	\$6,705	\$6,705	\$136,590	\$150,000
2017	Runways:Rehabilitate Runway <Lighting/Electrical Vault>	Construct New Airfield Electrical Vault. Replace existing vault with a new 12 ft x 16 ft pre-engineered building compliant with current electrical codes (adjacent to existing fire station). Replace airfield generator.	\$17,880	\$17,880	\$364,240	\$400,000
2018	Planning:<Conduct/Update> <Airport Master Plan Study {ALP, EA, etc.}>	Update Airport Master Plan: Helicopter & Large Aircraft Parking Study - Redesignate areas of the main apron to accommodate helicopters and large aircraft parking & evaluate existing pavement strengths.	\$11,175	\$11,175	\$227,650	\$250,000
2019	APMS - Runway Pavement Preservation	2019 (2014LCD) Crack Seal and Rubberized Asphalt Emulsion Seal Coat RW1432LH 10	\$389,972	\$43,330	\$0	\$433,302
2019	Apron, Construct (New)	Design & Construct Helicopter & large Aircraft Parking Areas (approximately 60,000 sf).	\$360,000	\$40,000	\$0	\$400,000
2020	Taxiways:Rehabilitate Taxiway - Reconstruct	Design & Construct Pavement Preservation of Twy A & Twy B (95,000 sy). Twy A 2013 PCI is 60.Twy B 2013 PCI is 55 - 65	\$17,880	\$17,880	\$364,240	\$400,000
Airport Total:			\$803,612	\$136,970	\$1,092,720	\$2,033,302
LAUGHLIN/BULLHEAD INTL - MOHAVE						
2016	Runways:<Extend/Widen/Strengthen> Runway [To Meet Standards] - Standards	Construct 1,000 ft extension (17,000 sy) to south end of Rwy 16/34 & includes extension of parallel Twy A (12,000 sy) & associated MIRL & MITL (Phase 3).	\$281,610	\$281,610	\$5,736,780	\$6,300,000
2017	Land:Acquire <Land/Easement> For Development/Relocation	Reimbursement for the acquisition of approx. 50 acres of ASLD property (Phase 1). The APN is 213-32-003.	\$44,700	\$44,700	\$910,600	\$1,000,000
2017	Apron:Rehabilitate Apron - Reconstruction	Reconstruct approximately 6,000 sy of the Airline/RON apron located south and west of the terminal building.	\$89,400	\$89,400	\$1,821,200	\$2,000,000
2017	Apron:Rehabilitate Apron - Reconstruction	Joint/Crack Seal the Commercial Apron in front of the Terminal Building. Approx. 40,000 lf.	\$22,350	\$22,350	\$455,300	\$500,000
2018	Planning:<Conduct/Update> <Airport Master Plan Study {ALP, EA, etc.}>	Prepare a comprehensive update to the previous 2009 Airport Master Plan, including a complete ALP update.	\$17,880	\$17,880	\$364,240	\$400,000
2018	Land:Acquire <Land/Easement> For Development/Relocation	Reimbursement for the acquisition of approx. 50 acres of ASLD property (Phase 2). The APN is 213-32-003.	\$44,700	\$44,700	\$910,600	\$1,000,000

Airport Projects - by Airport

Airport Name - County

FY	Project Component	Project Description	State Share	Local Share	Federal Share	Project Total
LAUGHLIN/BULLHEAD INTL - MOHAVE						
2019	Other:Improve Airport <Drainage/Erosion Control/Miscellaneous Improvements> - Standards	Miscellaneous erosion protection & drainage improvements along Rwy 16/34 (Phase 1).	\$22,350	\$22,350	\$455,300	\$500,000
2019	Land:Acquire <Land/Easement> For Development/Relocation	Reimbursement for the acquisition of approximately 50 acres of ASLD property (Phase 3). The APN is 213-32-003.	\$44,700	\$44,700	\$910,600	\$1,000,000
2020	Other:Improve Airport <Drainage/Erosion Control/Miscellaneous Improvements> - Standards	Miscellaneous erosion protection & drainage improvements along Rwy 16/34 (Phase 2).	\$22,350	\$22,350	\$455,300	\$500,000
2020	Land:Acquire <Land/Easement> For Development/Relocation	Reimbursement for the acquisition of approximately 50 acres of ASLD property (Phase 4). The APN is 213-32-003.	\$44,700	\$44,700	\$910,600	\$1,000,000
Airport Total:			\$634,740	\$634,740	\$12,930,520	\$14,200,000
MARANA RGNL - PIMA						
2016	Planning:<Conduct/Update> <Airport Master Plan Study {ALP, EA, etc.}>	Update Airport Master Plan with ALP Update.	\$13,410	\$13,410	\$273,180	\$300,000
2017	Planning:Conduct <Environmental Assessment/Environmental Impact Statement/Feasibility> <Study/Update>	EA for new public use terminal (16,000 SF).	\$6,705	\$6,705	\$136,590	\$150,000
2017	Apron:Rehabilitate Apron - Reconstruction	Rehab. of Open tie-down/transient, helicopter, west hanger and terminal aprons (Extg. aprons: transient 446,314 sf, open tie-down 166,579 sf, west helicopter 134,000 sf, west hanger 334,000 sf, terminal 777,000 sf)	\$116,220	\$116,220	\$2,367,560	\$2,600,000
2018	Terminal Development:Construct Terminal Building - Capacity	Design Terminal Building (16,000 SF)-Complete design and engineering for terminal building-100% Constr. documents. The terminal will be sited on the eastern end of the airport parallel to Twy E.	\$14,528	\$14,527	\$295,945	\$325,000
2018	Taxiways:Rehabilitate Taxiway - Reconstruct	Rehab. Twy C (Constr. Only) (50' x 2,000'). Complete constr. documents will be produced during FY 2017 per ACIP.	\$37,995	\$37,995	\$774,010	\$850,000
2018	Taxiways:Rehabilitate Taxiway - Reconstruct	Rehab. of 1600 ft of Twy B between Twy B2 to Twy A.	\$37,995	\$37,995	\$774,010	\$850,000
2018	APMS - Taxiway Pavement Preservation	Thin Asphalt Overlay or PFC TWEAV 10	\$241,798	\$26,866	\$0	\$268,664
2018	Taxiways:Install Taxiway Lighting (MITL) [Non Part 139 CS] - Statutory Emphasis Programs	Install MITLs on Twy C	\$8,940	\$8,940	\$182,120	\$200,000
2018	Planning:Conduct <Environmental Assessment/Environmental Impact Statement/Feasibility> <Study/Update>	EA Rwy 12/30 and Twy A & E extension. Rwy. 12/30 and Twy A & E to be extended by 299 ft	\$6,705	\$6,705	\$136,590	\$150,000
2019	Planning:Conduct <Environmental Assessment/Environmental Impact Statement/Feasibility> <Study/Update>	Prepare and Environmental Assesment for the Acquisition of Land - 201 acres. Approx. 155 acres of land located within the RPZ for Rwy 12 & 30. Approx. 46 acres are located within the RPZ for Rwy 3 & 21.	\$6,705	\$6,705	\$136,590	\$150,000

Airport Projects - by Airport

Airport Name - County

FY	Project Component	Project Description	State Share	Local Share	Federal Share	Project Total
MARANA RGNL - PIMA						
2019	Terminal Development:Construct Terminal Building - Capacity	Constr. a public use terminal on east side of airport - 16,000 SF - This terminal will include space for an FBO, pilot facilities, public meeting rooms, and airport administration offices.	\$312,900	\$312,900	\$6,374,200	\$7,000,000
2019	Runways:Extend Runway- Capacity	Design Rwy 12/30 and Twy A & E Extension. This project will extend the approach end of Rwy 30 approx. 299'. The Rwy width will stay the same at 100'.	\$4,470	\$4,470	\$91,060	\$100,000
2020	Other:Construct Aircraft Rescue & Fire Fighting Training Facility/Regional Burn Pit/Mobile Training Facility - Standards	Constr. waterline, 6,000 lf at 12 inc,from north portion of airport looping southwest around Rwy 12-30 to extg. well.	\$6,705	\$6,705	\$136,590	\$150,000
2020	Runways:Extend Runway- Capacity	Constr. Rwy 12/30 and Twy A & E Extension - The project will extend the approach end of Rwy 30 approx. 299'. The Rwy width will stay the same at 100'.	\$35,760	\$35,760	\$728,480	\$800,000
2020	Planning:Conduct Noise Compatibility Plan Study/Update	Update Part 150 Noise Study	\$13,410	\$13,410	\$273,180	\$300,000
2020	Land:Acquire Land/Easement For Approaches	Acquire Land - 201 acres. Purchase approx. 155 acres of land located within the RPZ for Rwy 12 & 30. Approx. 46 acres are located within the RPZ for Rwy 3 & 21.	\$227,970	\$227,970	\$4,644,060	\$5,100,000
Airport Total:			\$1,092,216	\$877,283	\$17,324,165	\$19,293,664
NOGALES INTL - SANTA CRUZ						
2016	Apron:Rehabilitate Apron - Reconstruction	Recon. Twy Connectors, Main Apron & Helipad Twy. This project will include design of approx. 3,200 LF of Twy.	\$5,453	\$5,454	\$111,093	\$122,000
2017	Land For Protection (Safety Areas), Acquire	Acquire Land: 8.86 for Rwy 3 RPZ, 5.1 acres south of Rwy, & 1.88 acres in RSA.	\$189,000	\$21,000	\$0	\$210,000
2017	Apron:Rehabilitate Apron - Reconstruction	Rehab. Twy Connectors, Main Apron & Helipad Twy. This project will include design of roughly 3,200 LF of Twy.	\$44,253	\$44,253	\$901,494	\$990,000
2017	Runways:<Construct/Extend/Improve> Runway Safety Area [Non-Primary Airports] - Standards	Improve ROFA & Erosion Mitigation.	\$4,381	\$4,380	\$89,239	\$98,000
2018	Runways:Install Runway <Vertical/Visual> Guidance System [PAPI/VASI/REIL/ALS/etc.] - Standards	Installation of New Rwy 3-21 REILs and replacement MIRLs.	\$43,582	\$43,583	\$887,835	\$975,000
2018	Runway Vertical/Visual Guidance System, Install/Upgrade	Design: Install New Rwy 3-21 LED REILs. This project will be designed together under 1 grant with the 2018 project for Install New Rwy 3-21 MIRLs.	\$19,800	\$2,200	\$0	\$22,000
2018	Runway MIRL/HIRL, Install	Design: Install New Rwy 3-21 LED MIRLs. This project will be designed together under 1 grant with the 2018 project for Install New Rwy 3-21 REILs.	\$79,200	\$8,800	\$0	\$88,000
2019	APMS - Taxiway Pavement Preservation	Thin Asphalt Overlay or PFC TWANG 10	\$700,978	\$77,886	\$0	\$778,864
2019	Runways:<Construct/Extend/Improve> Runway Safety Area [Non-Primary Airports] - Standards	Improve erosion control for 1.88 acres of land impacting the ROFA.	\$50,064	\$50,064	\$1,019,872	\$1,120,000

Airport Projects - by Airport

Airport Name - County

<i>FY</i>	<i>Project Component</i>	<i>Project Description</i>	<i>State Share</i>	<i>Local Share</i>	<i>Federal Share</i>	<i>Project Total</i>
NOGALES INTL - SANTA CRUZ						
2019	Other:<Construct/Improve/Repair> <Fuel Farm/Utilities> [MAP] - Other	Replace/relocate above-ground fuel tanks.	\$6,928	\$6,929	\$141,143	\$155,000
2020	Other:<Construct/Improve/Repair> <Fuel Farm/Utilities> [MAP] - Other	Replace/relocate above-ground storage tanks.	\$29,144	\$29,145	\$593,711	\$652,000
Airport Total:			\$1,172,783	\$293,694	\$3,744,387	\$5,210,864
PAGE MUNI - COCONINO						
2016	Taxiways:Construct Taxiway - Capacity	Design Northwest Taxilane (approximately 2,200 ft. x 35 ft.)	\$4,470	\$4,470	\$91,060	\$100,000
2017	Taxiways:Construct Taxiway - Capacity	Construct Northwest Taxilane (approximately 2,200 ft. x 35 ft.)	\$44,700	\$44,700	\$910,600	\$1,000,000
2018	APMS - Runway Pavement Preservation	2018 (2013LCD) Crack Seal and Rubberized Asphalt Emulsion Seal Coat RW1533PM 20	\$31,964	\$3,551	\$0	\$35,515
2018	APMS - Runway Pavement Preservation	2018 (2013LCD) Crack Seal and Rubberized Asphalt Emulsion Seal Coat RW1533PM 30	\$18,112	\$2,013	\$0	\$20,125
2018	APMS - Runway Pavement Preservation	RW1533PM 10	\$371,696	\$41,300	\$0	\$412,996
2018	APMS - Taxiway Pavement Preservation	Crack Seal and Rubberized Asphalt Emulsion Seal Coat TWAPM 20	\$10,804	\$1,201	\$0	\$12,005
2018	Apron:Rehabilitate Apron - Reconstruction	Design apron pavement rehab.(approx. 60,000 sy)	\$4,470	\$4,470	\$91,060	\$100,000
2018	Taxiways:Construct Taxiway [Includes Relocation]	Design Twy A2 Relocation (approximately 210 ft. x 40 ft.)	\$2,682	\$2,682	\$54,636	\$60,000
2019	Taxiways:Construct Taxiway - Capacity	Constr. Twy A2 Relocation (approximately 210 ft. x 40 ft.)	\$13,410	\$13,410	\$273,180	\$300,000
2019	Apron:Rehabilitate Apron - Reconstruction	Constr. apron pavement rehab., Ph. I (approximately 30,000 sy)	\$89,400	\$89,400	\$1,821,200	\$2,000,000
2020	APMS - Taxiway Pavement Preservation	TWAPM 40	\$10,085	\$1,121	\$0	\$11,206
2020	APMS - Taxiway Pavement Preservation	Mill and Replace Porous Friction Course TWAPM 10	\$648,549	\$72,061	\$0	\$720,610
2020	Planning:<Conduct/Update> <Airport Master Plan Study {ALP, EA, etc.}>	Update master plan and airport layout plan	\$11,175	\$11,175	\$227,650	\$250,000
Airport Total:			\$1,261,517	\$291,554	\$3,469,386	\$5,022,457
PAYSON - GILA						
2017	Taxiways:Install Taxiway Lighting (e.g., SMGCS, Reflectors, MITL) - Standards	Install Twy edge lighting, standard airfield signage, Rwy 6 - 2 box PAPI's, noise abatement signs, and density altitude signs.	\$22,350	\$22,350	\$455,300	\$500,000
2017	Taxiways:Construct Taxiway - Capacity	Construct Bypass Twys on each end of RWY (Approx. 35ft x 150ft)	\$13,410	\$13,410	\$273,180	\$300,000
2018	Buildings:<Construct/Expand/Imp/Modify/Rehabilitate> <Snow Removal Equipment/Chemical Storage Building/etc.> - Standards	Construct an SRE building (30 ft x 40 ft).	\$15,645	\$15,645	\$318,710	\$350,000
2019	Equipment:Acquire <Snow Removal Equipment/Urea Truck/etc.> - Standards	Acquire a dump truck with plow and truck mounted sweeper.	\$7,599	\$7,599	\$154,802	\$170,000

Airport Projects - by Airport

Airport Name - County

FY	Project Component	Project Description	State Share	Local Share	Federal Share	Project Total
PAYSON - GILA						
2020	Taxiways:Construct Taxiway - Capacity	Design/Construct high speed exit Taxiways A2 and A4.	\$15,645	\$15,645	\$318,710	\$350,000
Airport Total:			\$74,649	\$74,649	\$1,520,702	\$1,670,000
PHOENIX DEER VALLEY - MARICOPA						
2016	Apron:Rehabilitate Apron - Reconstruction	Reconstruct North Ramp (approximately 108,200 sy) - Phase II.	\$261,137	\$261,138	\$5,319,725	\$5,842,000
2017	APMS - Taxiway Pavement Preservation	TWA10DV 10	\$4,628	\$514	\$0	\$5,142
2017	APMS - Runway Pavement Preservation	Thin Asphalt Overlay or PFC RW07RDV 20	\$735,700	\$81,744	\$0	\$817,444
2017	Taxiways:Construct Taxiway - Capacity	Construct aircraft run-up area at the ends of Rwy 7R/25L. Each area is approximately 13,500 sy for a total of 27,000 sy.	\$112,197	\$112,197	\$2,285,606	\$2,510,000
2018	Taxiways:Construct Taxiway [Includes Relocation]	Relocate Twy B to the south (approximately 5,300 ft x 40 ft).	\$236,910	\$236,910	\$4,826,180	\$5,300,000
2019	APMS - Taxiway Pavement Preservation	Thin Asphalt Overlay or PFC TWADV 10	\$26,510	\$2,945	\$0	\$29,455
2019	APMS - Taxiway Pavement Preservation	Thin Asphalt Overlay or PFC TWSRDV 10	\$15,017	\$1,669	\$0	\$16,686
2019	APMS - Taxiway Pavement Preservation	Thin Asphalt Overlay or PFC TWSRDV 30	\$15,784	\$1,754	\$0	\$17,538
2019	Taxiways:Construct Taxiway - Capacity	Construct acute angle Twy connectors B6 and B7. Relocate guard lights.	\$87,076	\$87,075	\$1,773,849	\$1,948,000
2020	Runways:Rehabilitate Runway - Reconstruct	Rehabilitate Rwy 7R/25L (approximately 8,200 ft x 100 ft).	\$76,884	\$76,884	\$1,566,232	\$1,720,000
2020	APMS - Runway Pavement Preservation	Thin Asphalt Overlay or PFC RW07RDV 10	\$395,640	\$43,960	\$0	\$439,600
Airport Total:			\$1,967,483	\$906,790	\$15,771,592	\$18,645,865
PHOENIX GOODYEAR - MARICOPA						
2016	APMS - Runway Pavement Preservation	Mill and Replace Porous Friction Course RW321GY 70	\$673,753	\$74,861	\$0	\$748,614
2016	Obstructions, Light/Mark/Remove (Safety Areas)	Shift Rwy 3/21 300 ft to the southwest providing RSA standards on both ends. Remove the displaced threshold for Rwy 21 - Phase III.	\$1,530,000	\$170,000	\$0	\$1,700,000
2016	Apron:Rehabilitate Apron - Reconstruction	Rehabilitate Apron Pavement (approximately 120,000 sy of asphalt pavement).	\$186,850	\$186,851	\$3,806,399	\$4,180,100
2016	Planning:<Conduct/Update> <Airport Master Plan Study {ALP, EA, etc.}>	Update Airport Master Plan.	\$15,645	\$15,645	\$318,710	\$350,000
2016	Taxiways:Construct Taxiway - Capacity	Design and construct west parallel Twy B and exits. Taxiway will be 8,500 ft x 75 ft. Phase I (NEPA and Design).	\$160,920	\$160,920	\$3,278,160	\$3,600,000
2016	APMS - Taxiway Pavement Preservation	Mill and Replace Porous Friction Course TWA2GY 10	\$10,456	\$1,162	\$0	\$11,618
2016	APMS - Runway Pavement Preservation	Mill and Replace Porous Friction Course RW321GY 80	\$98,212	\$10,913	\$0	\$109,125
2017	APMS - Runway Pavement Preservation	Mill and Replace Porous Friction Course RW321GY 60	\$229,378	\$25,487	\$0	\$254,865

Airport Projects - by Airport

Airport Name - County

<i>FY</i>	<i>Project Component</i>	<i>Project Description</i>	<i>State Share</i>	<i>Local Share</i>	<i>Federal Share</i>	<i>Project Total</i>
PHOENIX GOODYEAR - MARICOPA						
2017	APMS - Runway Pavement Preservation	Mill and Replace Porous Friction Course RW321GY 50	\$778,910	\$86,546	\$0	\$865,456
2017	APMS - Taxiway Pavement Preservation	Mill and Replace Porous Friction Course TWA3GY 20	\$27,275	\$3,031	\$0	\$30,306
2017	Apron:Rehabilitate Apron - Reconstruction	Rehabilitate Apron Pavement - Phase I (approximately 60,000 sy of concrete pavement).	\$281,610	\$281,610	\$5,736,780	\$6,300,000
2017	Land For Protection (Safety Areas), Acquire	Airport land acquisition in RPZ (approximately 12 acres).	\$2,110,000	\$690,000	\$0	\$2,800,000
2017	APMS - Runway Pavement Preservation	Mill and Replace Porous Friction Course RW321GY 30	\$474,912	\$52,768	\$0	\$527,680
2017	Taxiways:Construct Taxiway - Capacity	Construct west parallel Twy B and exits (8,500 ft x 75 ft) - Phase II.	\$160,920	\$160,920	\$3,278,160	\$3,600,000
2018	Airport Drainage, Improve	Construct infield pavement in the vicinity of Twy Connectors A2, A3, and A8.	\$638,100	\$70,900	\$0	\$709,000
2018	Apron:Rehabilitate Apron - Reconstruction	Rehabilitate Apron Pavement - Phase II (approximately 60,000 sy of concrete pavement).	\$281,610	\$281,610	\$5,736,780	\$6,300,000
2018	Taxiways:Construct Taxiway - Capacity	Construct west parallel Twy B and exits (8,500 ft x 75 ft) - Phase III.	\$312,900	\$312,900	\$6,374,200	\$7,000,000
2018	Ground Transportation:<Construct/Expand/Improve/Modify/Rehabilitate> Access Road - Capacity	Reconstruct public access road from Litchfield Road to the terminal building complex (approximately 2,700 ft x 24 ft).	\$50,600	\$50,601	\$1,030,799	\$1,132,000
2018	APMS - Taxiway Pavement Preservation	Mill and Replace Porous Friction Course TWA3GY 30	\$28,504	\$3,167	\$0	\$31,671
2018	APMS - Taxiway Pavement Preservation	Mill and Replace Porous Friction Course TWA3GY 10	\$17,554	\$1,951	\$0	\$19,505
2019	APMS - Taxiway Pavement Preservation	Mill and Replace Porous Friction Course TWAGY 40	\$36,024	\$4,003	\$0	\$40,027
2019	APMS - Runway Pavement Preservation	Mill and Replace Porous Friction Course RW321GY 40	\$249,477	\$27,720	\$0	\$277,197
2019	Taxiways:Rehabilitate Taxiway - Reconstruct	Strengthen Twy A to be compliant with the airport reference code D-4 standards (approximately 6,000 ft x 75 ft).	\$133,876	\$133,877	\$2,727,247	\$2,995,000
2019	Taxiways:Construct Taxiway - Capacity	Construct west parallel Twy B and exits (8,500 ft x 75 ft) - Phase IV.	\$254,790	\$254,790	\$5,190,420	\$5,700,000
2019	Auto Parking, Construct	Improve public parking areas at the airport (approximately 9,500 sy).	\$1,200,000	\$133,400	\$0	\$1,333,400
2020	APMS - Taxiway Pavement Preservation	Mill and Replace Porous Friction Course TWAGY 30	\$633,268	\$70,363	\$0	\$703,631
2020	Apron:Construct Apron - Capacity	Design and construct new apron on the west side of the airport to accommodate new development areas and support Twy B.	\$174,330	\$174,330	\$3,551,340	\$3,900,000
2020	Auto Parking, Construct	Improve public parking areas at the airport (approximately 10,700 sy).	\$1,350,000	\$150,000	\$0	\$1,500,000
Airport Total:			\$12,099,874	\$3,590,326	\$41,028,995	\$56,719,195

Airport Projects - by Airport

Airport Name - County						
<i>FY</i>	<i>Project Component</i>	<i>Project Description</i>	<i>State Share</i>	<i>Local Share</i>	<i>Federal Share</i>	<i>Project Total</i>
PHOENIX SKY HARBOR INTL - MARICOPA						
2016	Apron:Rehabilitate Apron - Reconstruction	Reconstruct Terminal 4 Apron - Phase III (approximately 48,000 sy).	\$1,505,250	\$1,505,250	\$9,031,500	\$12,042,000
2016	Apron:Rehabilitate Apron - Reconstruction	Reconstruct West Air Cargo Apron (approximately 67,830 sy).	\$644,250	\$644,250	\$3,865,500	\$5,154,000
2016	Other:Environmental Mitigation	In order to increase energy efficiency at the airport, various energy efficiency projects will be included: heating and cooling improvements, base load, back-up power, and power for on-road airport vehicles and ground support equipment.	\$625,000	\$625,000	\$3,750,000	\$5,000,000
2016	Planning:<Conduct/Update> <Airport Master Plan Study {ALP, EA, etc.}>	Develop a new Airport Master Plan.	\$734,375	\$734,375	\$4,406,250	\$5,875,000
2016	Taxiways:Rehabilitate Taxiway Lighting - Reconstruct	Replace old airfield Twy and Rwy edge lights, transformers, guard lights and lead-in lights and convert to LED. Upgrade controls.	\$500,000	\$500,000	\$3,000,000	\$4,000,000
2016	Airport Drainage, Improve	Upgrade airfield utility access points by raising utility vaults, pave adjacent infields and construct new airfield sign bases and conduit at locations that meet Airport Design Standards - Phase II.	\$2,110,000	\$690,000	\$0	\$2,800,000
2016	Planning:Conduct Noise Compatibility Plan Study/Update	Land Reuse and Redevelopment: Prepare a development plan for the area in which noise-impacted properties were acquired.	\$875,000	\$875,000	\$5,250,000	\$7,000,000
2017	Airport Drainage, Improve	Upgrade airfield utility access points by raising utility vaults, pave adjacent infields and construct new airfield sign bases and conduit at locations that meet Airport Design Standards - Phase III.	\$2,110,000	\$690,000	\$0	\$2,800,000
2017	Other:Environmental Mitigation	In order to increase energy efficiency at the airport, various energy efficiency projects will be included: heating and cooling improvements, base load, back-up power, and power for on-road airport vehicles and ground support equipment.	\$625,000	\$625,000	\$3,750,000	\$5,000,000
2017	Apron:Rehabilitate Apron - Reconstruction	Reconstruct Terminal 4 Apron - Phase IV (approximately 48,000 sy).	\$1,505,250	\$1,505,250	\$9,031,500	\$12,042,000
2017	Apron:Rehabilitate Apron - Reconstruction	Reconstruct T3 South Transition apron (Apron east of T3 South Concourse, approximately 20,000 sy).	\$375,000	\$375,000	\$2,250,000	\$3,000,000
2017	Apron:Expand Apron - Capacity	Construct South Air Cargo apron (approximately 52,000 sy).	\$1,667,750	\$1,667,750	\$10,006,500	\$13,342,000
2018	Planning:Conduct Noise Compatibility Plan Study/Update	Conduct FAR Part 150 Study.	\$187,500	\$187,500	\$1,125,000	\$1,500,000
2018	Other:Environmental Mitigation	In order to increase energy efficiency at the airport, various energy efficiency projects will be included: heating and cooling improvements, base load, back-up power, and power for on-road airport vehicles and ground support equipment.	\$625,000	\$625,000	\$3,750,000	\$5,000,000

Airport Projects - by Airport

Airport Name - County

FY	Project Component	Project Description	State Share	Local Share	Federal Share	Project Total
PHOENIX SKY HARBOR INTL - MARICOPA						
2018	Airport Drainage, Improve	Upgrade airfield utility access points by raising utility vaults, pave adjacent infields and construct new airfield sign bases and conduit at locations that meet Airport Design Standards - Phase IV.	\$2,110,000	\$690,000	\$0	\$2,800,000
2018	Taxiways:Construct Taxiway - Capacity	Construction of new Crossfield Twy V - Phase I.	\$1,875,000	\$1,875,000	\$11,250,000	\$15,000,000
2018	Runways:Rehabilitate Runway - Reconstruct	Remove and replace section of Rwy 8-26 (approx. 10,489 sy) between Twys B5 and B7 and groove the new concrete surface. Work will include conduits, lighting, electrical, drainage. FAA Rwy Status Light System may be replaced.	\$478,500	\$478,500	\$2,871,000	\$3,828,000
2018	Planning:<Conduct/Update> (e.g., Pavement Maintenance Plan, PCI, NPDES, etc.)	Inspect airfield pavement surfaces, provide report of current conditions, and provide pavement management program for the area inspected.	\$45,000	\$45,000	\$270,000	\$360,000
2018	Apron:Rehabilitate Apron - Reconstruction	Reconstruct Terminal 4 Apron - Phase V (approximately 48,000 sy).	\$1,505,250	\$1,505,250	\$9,031,500	\$12,042,000
2019	Other:Environmental Mitigation	In order to increase energy efficiency at the airport, various energy efficiency projects will be included: heating and cooling improvements, base load, back-up power, and power for on-road airport vehicles and ground support equipment.	\$625,000	\$625,000	\$3,750,000	\$5,000,000
2019	Airport Drainage, Improve	Upgrade airfield utility access points by raising utility vaults, pave adjacent infields and construct new airfield sign bases and conduit at locations that meet Airport Design Standards - Phase V.	\$2,100,000	\$690,000	\$0	\$2,790,000
2019	Taxiways:Construct Taxiway - Capacity	Construction of new Crossfield Twy V - Phase II.	\$1,875,000	\$1,875,000	\$11,250,000	\$15,000,000
2019	Apron:Rehabilitate Apron - Reconstruction	Reconstruct Terminal 2 apron (existing concourse building envelope is 9,250 sy).	\$265,875	\$265,875	\$1,595,250	\$2,127,000
2019	Taxiways:Rehabilitate Taxiway - Reconstruct	Reconstruct Twy Connector F8 (approximately 2,000 sy).	\$625,000	\$625,000	\$3,750,000	\$5,000,000
2020	Airport Drainage, Improve	Upgrade airfield utility access points by raising utility vaults, pave adjacent infields and construct new airfield sign bases and conduit at locations that meet Airport Design Standards - Phase V.	\$2,110,000	\$69,000	\$0	\$2,179,000
2020	Taxiways:Construct Taxiway - Capacity	Construction of new Crossfield Twy V - Phase III.	\$1,875,000	\$1,875,000	\$11,250,000	\$15,000,000
2020	Other:Environmental Mitigation	In order to increase energy efficiency at the airport, various energy efficiency projects will be included: heating and cooling improvements, base load, back-up power, and power for on-road airport vehicles and ground support equipment.	\$625,000	\$625,000	\$3,750,000	\$5,000,000
2020	Apron:Construct Apron - Capacity	Reconstruct Northwest Apron (north of Twy A between A3 and A4, approximately 40,000 sy).	\$625,000	\$625,000	\$3,750,000	\$5,000,000
Airport Total:			\$30,829,000	\$23,118,000	\$121,734,000	\$175,681,000

Airport Projects - by Airport

Airport Name - County

<i>FY</i>	<i>Project Component</i>	<i>Project Description</i>	<i>State Share</i>	<i>Local Share</i>	<i>Federal Share</i>	<i>Project Total</i>
PHOENIX-MESA GATEWAY - MARICOPA						
2016	Apron:Rehabilitate Apron - Reconstruction	Recon. approx. 41,450 SY of PCC (1,136 ft x 345 ft) including removal of existing PCC, constr. of lime-treated subgrade, constr. of cement-treated base, installation of grounding rods and new pavement markings.	\$210,090	\$210,090	\$4,279,820	\$4,700,000
2016	Taxiways:Rehabilitate Taxiway - Reconstruct	Recon. Twy A between Twys N & L; approx. 2,100 ft x 75 ft with 35 ft twy shoulders. Includes lighting, drainage, signage and markings.	\$145,275	\$145,275	\$2,959,450	\$3,250,000
2016	Airport Drainage, Improve	Design and constr. Ph. 2 of Detention Mid airfield drainage improvements between Rws 12R/30L & 12C/30C south of Twy K.	\$900,000	\$100,000	\$0	\$1,000,000
2016	Land:Acquire <Land/Easement> For Development/Relocation	Land acquisition, design and relocation of the Airport Surveillance Radar (ASR-8) to a preferred off-airport site per FAA Site Selection Study (July 2014). Current ASR-8 location is in the footprint of the Eastside Terminal Development Area.	\$169,860	\$169,860	\$3,460,280	\$3,800,000
2017	Terminal Development:Construct Terminal Building - Capacity	Design up to constr. documents, eastside Terminal infrastructure including utilities, roadways, drainage, lighting and signage.	\$210,090	\$210,090	\$4,279,820	\$4,700,000
2017	Apron:Rehabilitate Apron - Reconstruction	North GA Apron Pavement Recon. Ph. 2, area approx. 927 ft x 313 ft (32,087 SY of PCC).	\$156,450	\$156,450	\$3,187,100	\$3,500,000
2018	Apron:Construct Apron - Capacity	Construct Eastside Terminal Apron, approx. 1 million sf. Includes lighting, drainage, signage and markings.	\$1,117,500	\$1,117,500	\$22,765,000	\$25,000,000
2018	Terminal Development:Construct Terminal Building - Capacity	Constr. Eastside Terminal Area infrastructure per Airport Master Plan. Project includes site work, infrastructure, and roadways.	\$1,519,800	\$1,519,800	\$30,960,400	\$34,000,000
2018	Taxiways:Extend Taxiway - Capacity	Constr. Twy C Extension Ph. 3 from Twy L to Twy P (approx. 4,100 ft x 75 ft with 35 ft twy shoulders) including lighting, drainage, signage and marking.	\$380,001	\$380,000	\$7,741,134	\$8,501,135
2018	Airport Drainage, Improve	Design/Constr. airfield detention basin to ultimate size to accommodate drainage requirements in the airport south industrial area.	\$1,620,000	\$180,000	\$0	\$1,800,000
2019	Apron:Construct Apron - Standards	Design/constr. Ph. 1 & 2 of AC runup area to accommodate ADG III AC for engine maintenance runs. Area is 260 ft x 390 ft, may include jet blast fence or other means of safety and sound suppression.	\$162,038	\$162,037	\$3,300,925	\$3,625,000
2019	Taxiway, Construct (New)	Design Only: Twy L Extension Ph. 3 between 30L & 30C. The Twy is 75 ft x 1,500 ft (12,500 sy PCC), plus 35 ft shoulders x 1,500 lf (12,000 sy ACP) including drainage and lighting.	\$360,000	\$40,000	\$0	\$400,000
2019	Terminal Development:Construct Terminal Building - Capacity	Design/constr. the eastside Terminal Building Ph. 1 building. Approx. size of Ph. 1 Terminal passenger space is 300,000 SF and includes AC gates, ticketing/check-in, baggage claim, security screening, concessions space and circulation.	\$7,777,800	\$7,777,800	\$158,444,400	\$174,000,000

Airport Projects - by Airport

Airport Name - County

FY	Project Component	Project Description	State Share	Local Share	Federal Share	Project Total
PHOENIX-MESA GATEWAY - MARICOPA						
2020	Taxiways:Extend Taxiway - Capacity	Constr. Twy L Extension Ph. 3 between 30L & 30C. The Twy is 75 ft x 1,500 ft (12,500 sy PCC), plus 35 ft shoulders x 1,500 lf (12,000 sy ACP) including drainage and lighting.	\$160,920	\$160,920	\$3,278,160	\$3,600,000
2020	Taxiways:Rehabilitate Taxiway - Reconstruct	Design/recon. Twy H between Twy B and Rwy 12R. Dimensions approx. 400 ft x 75 ft (3,500 sy PCC), plus 400 ft x 35 ft shoulders (3,000 sy ACP), including lighting, drainage, signage, and marking.	\$49,518	\$49,517	\$1,008,741	\$1,107,776
2020	Taxiway, Rehabilitate	Design/Recon. a section of Twy W, located north of Twy W/T intersection, approx. 22 ft x 405 ft.	\$1,027,800	\$114,200	\$0	\$1,142,000
Airport Total:			\$15,967,142	\$12,493,539	\$245,665,230	\$274,125,911
PINAL AIRPARK - PINAL						
2016	Runway, Rehabilitate	Rwy 12/30 rehab. (6849 ft x 150 ft)	\$2,025,000	\$225,000	\$0	\$2,250,000
2018	Taxiways:Rehabilitate Taxiway - Reconstruct	Recon. Twys I,II,III,IV and a portion of Twy A. Approx. 20,327 sy.	\$100,575	\$100,575	\$2,048,850	\$2,250,000
2018	Runway MIRL/HIRL, Install	MIRL/HIRL Rwy 12/30 Design Only	\$117,000	\$13,000	\$0	\$130,000
Airport Total:			\$2,242,575	\$338,575	\$2,048,850	\$4,630,000
POLACCA - NAVAJO						
2016	Runways:Construct Runway [Includes Relocation] - Standards	Design Rwy 3/21 (5,000 ft x 75 ft).	\$13,410	\$13,410	\$273,180	\$300,000
2017	Runways:Construct Runway [Includes Relocation] - Standards	Constr. Rwy 3/21 (5,000 ft x 75 ft).	\$134,100	\$134,100	\$2,731,800	\$3,000,000
2018	Apron:Construct Apron - Capacity	Design/Construct apron (11,520 sy) and Twy A3 (300 ft x 35 ft).	\$44,700	\$44,700	\$910,600	\$1,000,000
2019	Taxiways:Construct Taxiway - Capacity	Design/Construct bypass Twys w/ edge lighting at each end of the Rwy 3/21 (300 ft x 35 ft).	\$31,290	\$31,290	\$637,420	\$700,000
2020	Buildings:<Construct/Expand/Imp/Modify/Rehabilitate> <Snow Removal Equipment/Chemical Storage Building/etc.> - Standards	Design/Construct SRE Building (40 ft x 50 ft).	\$15,645	\$15,645	\$318,710	\$350,000
Airport Total:			\$239,145	\$239,145	\$4,871,710	\$5,350,000
ROLLE AIRFIELD - YUMA						
2017	APMS - Taxiway Pavement Preservation	Crack Seal and Rubberized Asphalt Emulsion Seal Coat TWARL 10	\$5,997	\$666	\$0	\$6,663
2017	APMS - Runway Pavement Preservation	Crack Seal and Rubberized Asphalt Emulsion Seal Coat RW1735RL 10	\$77,613	\$8,624	\$0	\$86,237
Airport Total:			\$83,610	\$9,290	\$0	\$92,900

Airport Projects - by Airport

Airport Name - County

FY	Project Component	Project Description	State Share	Local Share	Federal Share	Project Total
RYAN FIELD - PIMA						
2016	Apron:Construct Apron - Standards	Recon. AC parking apron located airside of restaurant (approx. 24,585 sy). Install new apron markings and AC tie-downs.	\$57,300	\$57,299	\$1,167,271	\$1,281,870
2017	Ground Transportation:<Construct/Expand/Improve/Modify/Rehabilitate> Access Road - Other	Mill and overlay Aviator Lane (approximately 43,700 sf). Project includes pavement markings.	\$6,330	\$6,329	\$128,941	\$141,600
2017	Other:<Construct/Rehabilitate> Parking Lot [Non Revenue Producing-Non Hub/MAP] - Other	Recon. Aviator Lane parking lots (approximately 28,350 sf). Project includes restriping and markings.	\$5,284	\$5,285	\$107,650	\$118,219
2017	APMS - Runway Pavement Preservation	2017 (2012LCD) Crack Seal and Rubberized Asphalt Emulsion Seal Coat RW6R24LRY 10	\$213,623	\$23,736	\$0	\$237,359
2018	APMS - Taxiway Pavement Preservation	TWERY 10	\$121,164	\$13,463	\$0	\$134,627
2018	Planning:<Conduct/Update> (e.g., Pavement Maintenance Plan, PCI, NPDES, etc.)	Prepare a detailed drainage study for the airfield to develop a drainage concept to convey drainage from the southeast development areas C and D to the North.	\$3,755	\$3,755	\$76,490	\$84,000
2019	Apron:Construct Apron - Standards	Ph.1 constr. of a portion of the new East apron for AC parking (approximatly 44,700 sy) at the end of East Access Road.	\$183,128	\$183,128	\$3,730,564	\$4,096,820
2019	APMS - Taxiway Pavement Preservation	Thin Asphalt Overlay or PFC TWBRY 10	\$323,188	\$35,910	\$0	\$359,098
2019	Apron, Construct (New)	Constr. New asphalt parking apron (approximately 15,000 sy) on the West side at the end of East Access Road. Project includes grading, drainage, paving, striping, area lighting, utilities and appurtenances.	\$1,394,640	\$154,960	\$0	\$1,549,600
2019	Ground Transportation:<Construct/Expand/Improve/Modify/Rehabilitate> Service Road - Other	Constr. Airside Service Road and parking in front of wash rack and along the southern edge of the tower apron. Project includes pavement markings and signage.	\$10,592	\$10,592	\$215,776	\$236,960
2020	APMS - Taxiway Pavement Preservation	Crack Seal and Rubberized Asphalt Emulsion Seal Coat TWARY 10	\$136,713	\$15,190	\$0	\$151,903
2020	Apron:Construct Apron - Standards	Ph. 2 constr. Of a portion of the new East apron for aircraft parking (approximately 17,600 sy) at the end of East Access Road.	\$288,400	\$288,400	\$5,875,100	\$6,451,900
Airport Total:			\$2,744,117	\$798,047	\$11,301,792	\$14,843,956
SAFFORD RGNL - GRAHAM						
2016	Taxiways:Extend Taxiway - Capacity	Constr. Holdbays and Runup Areas for Rwy 12/30	\$20,115	\$20,115	\$409,770	\$450,000
2017	Other:Improve Airport <Drainage/Erosion Control/Miscellaneous Improvements> - Standards	Improve Fireline System for Airport. Design will require upgrading the line & adding a well pump system in order to provide the necessary pressure for water distribution.	\$6,347	\$6,348	\$129,305	\$142,000

Airport Projects - by Airport

Airport Name - County

FY	Project Component	Project Description	State Share	Local Share	Federal Share	Project Total
SAFFORD RGNL - GRAHAM						
2017	Perimeter Fencing - Barbed Wire, Install (New)	Design will include realignment of perimeter fence outside the 300' RSA if the Rwy 8/26 remains at B-II. Project will be designed as 1 project with 2017 Obstruction study.	\$62,100	\$6,900	\$0	\$69,000
2017	APMS - Runway Pavement Preservation	Crack Seal and Rubberized Asphalt Emulsion Seal Coat RW1230SF 10	\$290,485	\$32,276	\$0	\$322,761
2017	Planning:Conduct <Environmental Assessment/Environmental Impact Statement/Feasibility> <Study/Update>	Conduct EA for Land Acquisition for Runway 12/30 RPZs. Both RPZ edges for 12/30 require an acquisition of land in order to maintain the proper clearance for RPZ.	\$5,632	\$5,632	\$114,736	\$126,000
2017	Obstructions, Light/Mark/Remove (Safety Areas)	Conduct an Obstruction Study. The project will be included with the 2017 Perimeter Fence Design.	\$18,000	\$2,000	\$0	\$20,000
2018	Other:Improve Airport <Drainage/Erosion Control/Miscellaneous Improvements> - Standards	Upgrading water line and adding a well pump system to provide necessary pressure.	\$50,064	\$50,064	\$1,019,872	\$1,120,000
2018	Perimeter Fencing - Barbed Wire, Install (New)	The perimeter fencing on the north side should be replaced in several areas, including access gates for 2 locations. Constr. includes realignment of perimeter fence outside the 300' RSA if the Runway 8/26 remains at a BII.	\$765,000	\$85,000	\$0	\$850,000
2018	Land:Acquire Land/Easement For Approaches	Land Acquisition for Rwy 12/30 RPZs	\$9,387	\$9,387	\$191,226	\$210,000
2019	Master Plans	Update Airport Master Plan.	\$180,000	\$20,000	\$0	\$200,000
2019	Runways:Rehabilitate Runway - Reconstruct	Design Recon. of Rwy 8/26	\$11,846	\$11,845	\$241,309	\$265,000
2020	Runways:Rehabilitate Runway - Reconstruct	Recon. of Rwy 8/26	\$125,160	\$125,160	\$2,549,680	\$2,800,000
Airport Total:			\$1,544,136	\$374,727	\$4,655,898	\$6,574,761
SAN CARLOS APACHE - GILA						
2016	APMS - Runway Pavement Preservation	Thin Asphalt Overlay or PFC RW927SA 10	\$880,267	\$97,807	\$0	\$978,074
2016	Other:<Construct/Improve/Repair> <Fuel Farm/Utilities> [MAP] - Other	Constr. fuel farm - JetA and Avgas - east of the extg. west tiedown ramp: Ph. 2.	\$11,175	\$11,175	\$227,650	\$250,000
2017	Apron:Install Apron Lighting - Standards	Install area lighting around the apron.	\$4,470	\$4,470	\$91,060	\$100,000
2017	Apron:Rehabilitate Apron - Reconstruction	Crack seal, fog seal, and remark east and west aprons (36,450 sy) (design/constr.).	\$4,470	\$4,470	\$91,060	\$100,000
2017	Taxiways:Rehabilitate Taxiway - Reconstruct	Crack seal, fog seal, and remark Twy A, A1, A2, A3, A4, A5, and A6 (33,000 sy) (design/constr.).	\$4,470	\$4,470	\$91,060	\$100,000
2018	Planning:Conduct <Environmental Assessment/Environmental Impact Statement/Feasibility> <Study/Update>	EA for grading and drainage mitigation on the south side of Rwy 9/27 to repair the wash and allow drainage into the wash. Includes fence and wash intersections.	\$13,410	\$13,410	\$273,180	\$300,000
2018	APMS - Taxiway Pavement Preservation	Thin Asphalt Overlay or PFC TWASA 20	\$231,075	\$25,675	\$0	\$256,750
2019	Other:Improve Airport <Drainage/Erosion Control/Miscellaneous Improvements> - Standards	Grading and drainage mitigation on the south side of Rwy 9/27 to repair the wash.	\$22,350	\$22,350	\$455,300	\$500,000

Airport Projects - by Airport

Airport Name - County

FY	Project Component	Project Description	State Share	Local Share	Federal Share	Project Total
SAN CARLOS APACHE - GILA						
2019	APMS - Taxiway Pavement Preservation	TWASA 10	\$260,401	\$28,933	\$0	\$289,334
2020	APMS - Apron Pavement Preservation	Thin Asphalt Overlay or PFC A01SA 10	\$231,525	\$25,725	\$0	\$257,250
2020	APMS - Apron Pavement Preservation	Thin Asphalt Overlay or PFC A02SA 20	\$66,051	\$7,339	\$0	\$73,390
2020	Taxiways:Install Taxiway Lighting (e.g., SMGCS, Reflectors, MITL) - Standards	Install MITLs and signage on Twys A, A1, A2, A3, A4, A5, and A6.	\$20,115	\$20,115	\$409,770	\$450,000
Airport Total:			\$1,749,779	\$265,939	\$1,639,080	\$3,654,798
SAN MANUEL - PINAL						
2016	Obstructions, Light/Mark/Remove (Safety Areas)	Design of the mitigation of extg. obstructions to FAR Part 77 surfaces within airport property.	\$135,000	\$15,000	\$0	\$150,000
2016	Ground Transportation:<Construct/Expand/Improve/Modify/Rehabilitate> Access Road - Other	Recon. approx. 1,500 SY of extg. airport access/service road (Design and Constr.).	\$16,316	\$16,315	\$332,369	\$365,000
2016	Planning:<Conduct/Update> (e.g., Pavement Maintenance Plan, PCI, NPDES, etc.)	Drainage Master Plan Update	\$6,705	\$6,705	\$136,590	\$150,000
2016	Planning:Conduct <Environmental Assessment/Environmental Impact Statement/Feasibility> <Study/Update>	Environmental Assessment for Land Acquisition of Airport Property (approximately 158 acres)	\$8,940	\$8,940	\$182,120	\$200,000
2017	Obstructions, Light/Mark/Remove (Safety Areas)	Mitigation of extg. obstructions to the FAR Part 77 surfaces within airport property.	\$360,000	\$40,000	\$0	\$400,000
2017	Land:Acquire <Land/Easement> For Development/Relocation	Acquire approx. 158 acres of extg. airport property currently leased by BHP.	\$20,115	\$20,115	\$409,770	\$450,000
2017	Land:Acquire Miscellaneous Land (Describe, e.g., Land For Outer Marker, Relocate Road)	Acquire approx. 3.3 acres for the relocation of the extg. airport access road.	\$447	\$447	\$9,106	\$10,000
2018	Apron:Expand Apron - Capacity	Expand the extg. AC pavement apron approx. 16,000 SY.	\$32,631	\$32,631	\$664,738	\$730,000
2019	APMS - Runway Pavement Preservation	2019 (2014LCD) Crack Seal and Rubberized Asphalt Emulsion Seal Coat RW1129SM 10	\$173,965	\$19,329	\$0	\$193,294
2020	Apron:Expand Apron - Capacity	Expand the extg. ACP apron approx. 16,000 SY.	\$32,631	\$32,631	\$664,738	\$730,000
Airport Total:			\$786,750	\$192,113	\$2,399,431	\$3,378,294
SCOTTSDALE - MARICOPA						
2016	Airport Drainage, Improve	Place additional rock in the approach area of Rwy 3, approx. 70,000 sy.	\$450,000	\$50,000	\$0	\$500,000
2016	Apron:Rehabilitate Apron - Reconstruction	Recon. the Delta Apron (approx. 480 x 350 ft), 18,759 sy, located on the west side of the airfield at the south end of the airport.	\$107,280	\$107,280	\$2,185,440	\$2,400,000
2017	Runway, Rehabilitate	Rehabilitate 97,900 sy - 8,250 x 100 ft. The project also includes improving Rwy shoulders, blast pads, and new MIRL.	\$540,000	\$60,000	\$0	\$600,000

Airport Projects - by Airport

Airport Name - County

<i>FY</i>	<i>Project Component</i>	<i>Project Description</i>	<i>State Share</i>	<i>Local Share</i>	<i>Federal Share</i>	<i>Project Total</i>
SCOTTSDALE - MARICOPA						
2017	Taxiways:Rehabilitate Taxiway - Reconstruct	Rehabilitate/Overlay 73,521 sy of parallel Twy A and exits - 6,500 ft x 40 ft (Including installing shoulders, MITL, and guidance signs)	\$241,380	\$241,380	\$4,917,240	\$5,400,000
2017	APMS - Runway Pavement Preservation	RW321SC 10	\$381,138	\$42,349	\$0	\$423,487
2018	Runways:Rehabilitate Runway - Reconstruct	Rehabilitate 70,161 sy of Rwy 3-21 - 6,200 ft x 100 ft. The project also includes improving the Rwy shoulders, blast pads, and new MIRL.	\$268,200	\$268,200	\$5,463,600	\$6,000,000
2018	Runway, Rehabilitate	Rehabilitate 27,739 sq of Rwy 3-21 - (2,100 ft x 100 ft). The project also includes improving the Rwy shoulders, blast pads, and new MIRL.	\$2,110,000	\$262,222	\$0	\$2,372,222
2019	APMS - Taxiway Pavement Preservation	Crack Seal and Rubberized Asphalt Emulsion Seal Coat TWASC 20	\$8,018	\$891	\$0	\$8,909
2019	APMS - Taxiway Pavement Preservation	TWBSC 10	\$704,413	\$78,268	\$0	\$782,681
2019	Taxiway, Rehabilitate	Rehabilitate Twy C, approx. 800 ft x 40 ft (4,600 sy).	\$360,000	\$40,000	\$0	\$400,000
2020	APMS - Apron Pavement Preservation	Crack Seal and Rubberized Asphalt Emulsion Seal Coat A01SC 100	\$2,800	\$311	\$0	\$3,111
2020	APMS - Taxiway Pavement Preservation	Crack Seal and Rubberized Asphalt Emulsion Seal Coat TWASC 30	\$110,398	\$12,267	\$0	\$122,665
2020	Planning:Conduct <Environmental Assessment/Environmental Impact Statement/Feasibility> <Study/Update>	Preparation of an EA for the acquisition of approx. 4.0 acres of land for airport development. APN: 215-56-089A,090A,091A,092A, and 093A.	\$8,940	\$8,940	\$182,120	\$200,000
Airport Total:			\$5,292,567	\$1,172,108	\$12,748,400	\$19,213,075
SEDONA - YAVAPAI						
2016	APMS - Runway Pavement Preservation	Crack Seal and Rubberized Asphalt Emulsion Seal Coat RW321SD 10	\$231,218	\$25,691	\$0	\$256,909
2016	Apron:Rehabilitate Apron - Reconstruction	Design Apron D rehab.(14,000 SY)	\$4,246	\$4,247	\$86,507	\$95,000
2017	Apron:Rehabilitate Apron - Reconstruction	Constr. apron D rehab. (14,000 SY)	\$36,878	\$36,877	\$751,245	\$825,000
2019	Auto Parking, Construct	Constr. auxiliary parking lot (8,000 SY)	\$810,000	\$90,000	\$0	\$900,000
2020	Taxiways:Extend Taxiway - Capacity	Design Twy A extension (7,350 SY)	\$11,175	\$11,175	\$227,650	\$250,000
2020	Ground Transportation:<Construct/Expand/Improve/Modify/Rehabilitate> Service Road - Other	Design and constr. perimeter road (5,500 ft x 20 ft)	\$30,396	\$30,396	\$619,208	\$680,000
Airport Total:			\$1,123,913	\$198,386	\$1,684,610	\$3,006,909

Airport Projects - by Airport

Airport Name - County

<i>FY</i>	<i>Project Component</i>	<i>Project Description</i>	<i>State Share</i>	<i>Local Share</i>	<i>Federal Share</i>	<i>Project Total</i>
SELIGMAN - YAVAPAI						
2018	APMS - Runway Pavement Preservation	2018 (2013LCD) Crack Seal and Rubberized Asphalt Emulsion Seal Coat RW422SG 10	\$170,473	\$18,941	\$0	\$189,414
Airport Total:			\$170,473	\$18,941	\$0	\$189,414
SHOW LOW RGNL - NAVAJO						
2016	Runways:Rehabilitate Runway - Reconstruct	Rehabilitate Rwy 6/24 (7,200 ft x 100 ft) Mill & Overlay.	\$73,750	\$73,750	\$2,802,500	\$2,950,000
2017	Planning:<Conduct/Update> <Airport Master Plan Study {ALP, EA, etc.}>	Conduct Master Plan Update.	\$6,250	\$6,250	\$237,500	\$250,000
2018	Runways:<Construct/Extend/Improve> Runway Safety Area [Non-Primary Airports] - Standards	Install EMAS for Rwy 6 (approximately 100 ft x 250 ft).	\$87,500	\$87,500	\$3,325,000	\$3,500,000
2019	Apron:Expand Apron - Capacity	Design apron expansion east of terminal building (16,000 sy).	\$3,750	\$3,750	\$142,500	\$150,000
2020	Planning:Conduct <Environmental Assessment/Environmental Impact Statement/Feasibility> <Study/Update>	EA for future design and construction of Rwy 18/36 and Parallel Twy D.	\$7,500	\$7,500	\$285,000	\$300,000
Airport Total:			\$178,750	\$178,750	\$6,792,500	\$7,150,000
SIERRA VISTA MUNI-LIBBY AAF - COCHISE						
2016	Taxiways:Install Taxiway Lighting (MITL) [Required By Part 139] - Safety/Security	Constr. Twy P signage & MITLs, approx. 12,000 lf.	\$58,110	\$58,110	\$1,183,780	\$1,300,000
2017	Planning:<Conduct/Update> <Airport Master Plan Study {ALP, EA, etc.}>	EA of approx. 9,000 lf x 75 ft wide of Twy J, A & B Extension, Ph. 4; Twy J Extension Project will create a civilian side parallel Twy to main Rwy 8-26.	\$17,880	\$17,880	\$364,240	\$400,000
2018	Taxiways:<Extend/Widen/Strengthen> Taxiway - Standards	Design approx. 7,000 ft x 75 ft wide Twy J Extension, 2,000 lf of adjoining Twy A & B Ph. 4 and 5. Twy J Extension Project will create a civilian side parallel Twy to main Rwy 8-26.	\$20,115	\$20,115	\$409,770	\$450,000
2018	Planning:Conduct <Environmental Assessment/Environmental Impact Statement/Feasibility> <Study/Update>	EA of Rwy 12-30 and Twy K Extension Project. Extend Rwy 12-30 and Twy K 1,234 ft x 75 ft NW and constr. hold apron and 500 ft overrun. Constr. access road leading to AWOS.	\$8,940	\$8,940	\$182,120	\$200,000
2019	Taxiways:Extend Taxiway - Capacity	Constr. approx. 4,500 ft x 75 ft Twy J Extension Ph. 4 and adjoining 1,000 lf of Twy B Extension. The Twy J Extension Project will create a civilian side parallel Twy to main Rwy 8-26.	\$100,575	\$100,575	\$2,048,850	\$2,250,000
2019	Runways:<Extend/Widen/Strengthen> Runway [To Meet Standards] - Standards	Design Rwy 12-30 & Twy K Extension. Extend Rwy 12-30 & Twy K 1,234 ft x 75 ft NW and constr. hold apron and 500 ft overrun. Constr. access road leading to AWOS.	\$8,940	\$8,940	\$182,120	\$200,000
2020	APMS - Taxiway Pavement Preservation	Mill and Replace Porous Friction Course TWGSGV 10	\$458,402	\$50,934	\$0	\$509,336

Airport Projects - by Airport

Airport Name - County

FY	Project Component	Project Description	State Share	Local Share	Federal Share	Project Total
SIERRA VISTA MUNI-LIBBY AAF - COCHISE						
2020	Runways:<Extend/Widen/Strengthen> Runway [To Meet Standards] - Standards	Constr. Rwy 12-30 & Twy K Extension. Extend Rwy 12-30 & Twy K 1,234 ft x 75 ft NW and constr. hold apron and 500 ft overrun. Constr. access road leading to AWOS.	\$290,550	\$290,550	\$5,918,900	\$6,500,000
2020	Taxiways:Construct Taxiway - Capacity	Constr. approx. 2,500 ft x 75 ft Twy J Extension - Ph. 5 & 1,000 lf of adjoining Twy A. The Twy J Extension Project will create a civilian side parallel Twy to main Rwy 8-26.	\$55,875	\$55,875	\$1,138,250	\$1,250,000
Airport Total:			\$1,019,387	\$611,919	\$11,428,030	\$13,059,336

SPRINGERVILLE MUNI - APACHE

2016	Apron:Rehabilitate Apron - Reconstruction	Design rehabilitation of Main Transient Apron (3 acres) including tie down areas.	\$7,510	\$7,509	\$152,981	\$168,000
2016	Other:Install <Guidance/Other> Signs [Not Part 139] - Standards	Conduct signage and marking study.	\$4,381	\$4,380	\$89,239	\$98,000
2017	Guidance Signage, Rehabilitate	Install Guidance signs (new and rehabilitate) and marking.	\$315,000	\$35,000	\$0	\$350,000
2017	Apron:Rehabilitate Apron - Reconstruction	Construct rehabilitation of Main Transient Apron (3 acres) including tie down areas.	\$44,476	\$44,477	\$906,047	\$995,000
2018	Equipment:Acquire Security Equipment/Install Perimeter Fencing [Not Part 107] - Standards	Design installation of 2,600 lf Perimeter Fence (six foot with three strands of barb wire) on southwest side of airport perimeter.	\$3,531	\$3,532	\$71,937	\$79,000
2018	APMS - Taxiway Pavement Preservation	Thin Asphalt Overlay or PFC TWBSP 20	\$8,938	\$993	\$0	\$9,931
2018	APMS - Runway Pavement Preservation	Thin Asphalt Overlay or PFC RW321SP 10	\$826,264	\$91,807	\$0	\$918,071
2019	Apron, Construct (New)	Design North Transient Apron Expansion (5,000 sf).	\$40,500	\$4,500	\$0	\$45,000
2019	Equipment:Acquire Security Equipment/Install Perimeter Fencing [Not Part 107] - Standards	Install approximately 13,000 lf of perimeter fence (six foot and three strands of barb wire) Phase 1, northwest to southeast side of airport perimeter.	\$27,893	\$27,893	\$568,214	\$624,000
2020	Apron:Expand/Strengthen Apron - Standards	Construct North Transient Apron Expansion (5,000 sf).	\$31,066	\$31,067	\$632,867	\$695,000
2020	Buildings:<Construct/Expand/Imp/Modify/Rehabilitate> <Snow Removal Equipment/Chemical Storage Building/etc.> - Standards	Construct SRE building (50 ft x 100 ft) north of terminal building.	\$6,705	\$6,705	\$136,590	\$150,000
2020	Perimeter Fencing - Barbed Wire, Install (New)	Install approximately 7,500 lf of perimeter fence (six foot and three strands of barb wire) Phase 2, northeast to southwest side of airport perimeter.	\$561,600	\$62,400	\$0	\$624,000
Airport Total:			\$1,877,864	\$320,263	\$2,557,875	\$4,756,002

Airport Projects - by Airport

Airport Name - County

FY	Project Component	Project Description	State Share	Local Share	Federal Share	Project Total
ST JOHNS INDUSTRIAL AIR PARK - APACHE						
2018	APMS - Runway Pavement Preservation	2019 (ST2014) Thin Asphalt Overlay or PFC RW1432SJ 10	\$568,237	\$63,137	\$0	\$631,374
2020	APMS - Taxiway Pavement Preservation	Crack Seal and Rubberized Asphalt Emulsion Seal Coat TWASJ 30	\$12,350	\$1,372	\$0	\$13,722
2020	APMS - Taxiway Pavement Preservation	Crack Seal and Rubberized Asphalt Emulsion Seal Coat TWASJ 20	\$77,061	\$8,562	\$0	\$85,623
Airport Total:			\$657,648	\$73,071	\$0	\$730,719
TAYLOR - NAVAJO						
2016	Land For Protection (Safety Areas), Acquire	Acquire 1.99 acres in fee for RPZ - Exhibit A parcel #5 & #6. Includes relocation of a business.	\$270,000	\$30,000	\$0	\$300,000
2016	Land For Protection (Safety Areas), Acquire	Acquire 4.31 acres in fee for RPZ - Exhibit A parcel #4, Provide record of survey and ALP As-Built.	\$117,000	\$13,000	\$0	\$130,000
2017	APMS - Runway Pavement Preservation	Crack Seal and Rubberized Asphalt Emulsion Seal Coat RW321TA 10	\$252,071	\$28,008	\$0	\$280,079
2017	Other:<Construct/Improve/Repair> <Fuel Farm/Utilities> [MAP] - Other	Relocate and install new self serve Av Gas Fuel Farm with provision for future Jet-A fuel north east of the Apron. Install 3,000 sy of apron and taxilanes for fuel farm relocation.	\$15,645	\$15,645	\$318,710	\$350,000
2018	Apron:Construct Apron - Standards	Construct reconfigured apron (5,000 sy) to east side of existing apron to meet design standards. Install security perimeter fence from terminal building along apron reconfiguration, reconfigure 2,000 sy access road & parking area.	\$35,760	\$35,760	\$728,480	\$800,000
2019	Planning:<Conduct/Update> <Airport Master Plan Study {ALP, EA, etc.}>	Develop an updated Airport Layout Plan and an ALP Update report for 2020.	\$3,576	\$3,576	\$72,848	\$80,000
2019	Runways:Install Runway <Vertical/Visual> Guidance System [PAPI/VASI/REIL/ALS/etc.] - Standards	Install New PAPIs and REILs at both runway ends.	\$8,940	\$8,940	\$182,120	\$200,000
2020	Ground Transportation:<Construct/Expand/Improve/Modify/Rehabilitate> Access Road - Other	Construct access road (1,500 ft x 24 ft) along the SE side of the existing hangar development area to hangars near Rwy 21 threshold.	\$14,751	\$14,751	\$300,498	\$330,000
2020	APMS - Runway Pavement Preservation	Crack Seal and Rubberized Asphalt Emulsion Seal Coat TWATA 20	\$103,203	\$11,467	\$0	\$114,670
Airport Total:			\$820,946	\$161,147	\$1,602,656	\$2,584,749

Airport Projects - by Airport

Airport Name - County

FY	Project Component	Project Description	State Share	Local Share	Federal Share	Project Total
TOMBSTONE MUNI - COCHISE						
2016	Master Plans	ALP Update with Narrative.	\$67,500	\$7,500	\$0	\$75,000
2017	Taxiway, Construct (New)	Relocate Twy - Approx. 500 ft x 25 ft	\$112,500	\$12,500	\$0	\$125,000
2017	Runway Vertical/Visual Guidance System, Install/Upgrade	Location survey for Rwy 6/24 for PAPI	\$22,500	\$2,500	\$0	\$25,000
2018	Land For Protection (Safety Areas), Acquire	Acquire 5 acres of State Land for Rwy 06/24 RPZ	\$112,500	\$12,500	\$0	\$125,000
2019	Runway MIRL/HIRL, Install	Design MIRLs for Rwy 06/24	\$49,500	\$5,500	\$0	\$55,000
2019	Taxiway, Rehabilitate	Recon. shoulders at Twy A (575 ft)	\$58,500	\$6,500	\$0	\$65,000
Airport Total:			\$423,000	\$47,000	\$0	\$470,000
TUBA CITY - COCONINO						
2016	APMS - Runway Pavement Preservation	Thin Asphalt Overlay or PFC RW1533TC 20	\$185,662	\$20,629	\$0	\$206,291
2018	Perimeter Fencing - Barbed Wire, Install (New)	Extend the barbed wire perimeter fencing around the east side of the airport approx. 7,500 lf.	\$225,000	\$25,000	\$0	\$250,000
Airport Total:			\$410,662	\$45,629	\$0	\$456,291
TUCSON INTL - PIMA						
2016	Runways:Rehabilitate Runway - Reconstruct	Recon. of Rwy 11L-29R, shoulders and Connector twys (approx. 350,000 sf). Mill/replace surface course and appurtenances including adjustment of center light fixtures, re-grooving and striping.	\$827,781	\$827,780	\$16,863,021	\$18,518,582
2017	Planning:<Conduct/Update> (e.g., Pavement Maintenance Plan, PCI, NPDES, etc.)	Evaluation of the airport-wide drainage basin, storm water routing and improvements.	\$10,352	\$10,351	\$210,876	\$231,579
2017	Taxiways:Rehabilitate Taxiway - Reconstruct	Ph. 3 - Recon. Half of South Portion of Twy D, shoulders & connectors. Mill/overlay (approximately 450,000 sf). Project includes marking and re-striping.	\$67,050	\$67,050	\$1,365,900	\$1,500,000
2017	Taxiways:Rehabilitate Taxiway - Reconstruct	Straighten Twy D2 (approximately 40,500 sf).	\$60,381	\$60,381	\$1,230,045	\$1,350,807
2018	Runways:Construct Runway [Includes Relocation] - Standards	Design for proposed development of 150 ft x 11,000 ft PCC Rwy 11R-29L. Project includes relocation of extg. Rwy and constr. of new parallel Rwy.	\$536,400	\$536,400	\$10,927,200	\$12,000,000
2019	Runways:Construct Runway [Includes Relocation] - Standards	Design for proposed development of 150 ft x 11,000 ft PCC Rwy 11R-29L. Project includes relocation of existing Rwy and construction of new parallel Rwy.	\$268,200	\$268,200	\$5,463,600	\$6,000,000
2019	Apron:Rehabilitate Apron - Reconstruction	Reconstruct main terminal apron. Remove existing 12 inch concrete and replace with 16 inch. Project also calls for joint seal replacement in work zone 15.	\$331,008	\$331,007	\$6,743,078	\$7,405,093
2020	Runways:Construct Runway [Includes Relocation] - Standards	Constr. 150 ft x 11,000 ft PCC Rwy 11R-29L. Project includes relocation of extg. Rwy and constr. of new parallel Rwy.	\$6,034,500	\$6,034,500	\$122,931,000	\$135,000,000
Airport Total:			\$8,135,672	\$8,135,669	\$165,734,720	\$182,006,061

Airport Projects - by Airport

Airport Name - County

FY	Project Component	Project Description	State Share	Local Share	Federal Share	Project Total
WHITERIVER - NAVAJO						
2016	Other:<Light/Mark/Remove> Obstructions [Hazard Only e.g., Approaches] - Safety/Security	Bureau of Indian Affairs (BIA) yard removal: remove equipment bay building, offices, mechanics area, and fuel farm (design only).	\$8,940	\$8,940	\$182,120	\$200,000
2017	Runways:Rehabilitate Runway - Reconstruct	Crack seal, fog seal, and remark Rwy 1/19 (6,350 ft x 75 ft), Twy A (6,350 ft x 35 ft), connector Twys (5 at 240 ft x 35 ft), apron (600 ft x 200 ft) and helicopter operations area (design & construct).	\$16,092	\$16,092	\$327,816	\$360,000
2017	Other:<Light/Mark/Remove> Obstructions [Hazard Only e.g., Approaches] - Safety/Security	Bureau of Indian Affairs (BIA) yard removal: remove equipment bay building, office, mechanics area, and fuel farm (construct only).	\$13,410	\$13,410	\$273,180	\$300,000
2018	APMS - Runway Pavement Preservation	Thin Asphalt Overlay or PFC RW119WH 10	\$677,615	\$75,291	\$0	\$752,906
2018	APMS - Taxiway Pavement Preservation	Crack Seal and Rubberized Asphalt Emulsion Seal Coat TWBWH 10	\$3,846	\$427	\$0	\$4,273
2018	Taxiways:Install Taxiway Lighting (e.g., SMGCS, Reflectors, MITL) - Standards	Install lighting and signage on Twy A and connectors.	\$20,115	\$20,115	\$409,770	\$450,000
2019	APMS - Taxiway Pavement Preservation	Thin Asphalt Overlay or PFC TWAWH 10	\$409,213	\$45,468	\$0	\$454,681
2019	Planning:Conduct <Environmental Assessment/Environmental Impact Statement/Feasibility> <Study/Update>	EA to install avgas (100LL) fuel farm (10,000 gallon tank) with credit card reader.	\$11,175	\$11,175	\$227,650	\$250,000
2020	APMS - Apron Pavement Preservation	Thin Asphalt Overlay or PFC A01WH 10	\$190,327	\$21,147	\$0	\$211,474
2020	APMS - Apron Pavement Preservation	Thin Asphalt Overlay or PFC A02WH 10	\$64,757	\$7,195	\$0	\$71,952
Airport Total:			\$1,415,490	\$219,260	\$1,420,536	\$3,055,286
WICKENBURG MUNI - MARICOPA						
2016	Taxiways:Construct Taxiway - Capacity	Design an expanded T-Hangar development area including site preparation, drainage, utilities, and taxilanes (15,000 sy).	\$6,705	\$6,705	\$136,590	\$150,000
2016	Apron:Construct Apron - Environmental Mitigation	Design wash rack to help ensure that AC washing meets all state and federal environmental requirements.	\$1,173	\$1,174	\$23,903	\$26,250
2017	APMS - Runway Pavement Preservation	2017 (2012ST) Crack Seal and Rubberized Asphalt Emulsion Seal Coat RW523WK 10	\$211,359	\$23,484	\$0	\$234,843
2017	Runways:Install Runway <Vertical/Visual> Guidance System [PAPI/VASI/REIL/ALS/etc.] - Standards	Design installation of ODALs for Rwy 23.	\$670	\$671	\$13,659	\$15,000
2017	Taxiways:Extend Taxiway - Capacity	Constr. expanded T-Hangar development area including site preparation, drainage, utilities, and taxilanes (15,000 sy).	\$67,050	\$67,050	\$1,365,900	\$1,500,000
2017	Apron:Construct Apron - Environmental Mitigation	Constr. of a wash rack that will help ensure that AC washing meets all state and federal environmental requirements.	\$7,822	\$7,823	\$159,355	\$175,000
2018	Runways:Install Runway Lighting (HIRL, MIRL, TDZ, LAHSO Or CL) - Standards	Design for the installation of LED MIRL/MITL (approx. 13,450 lf).	\$1,542	\$1,542	\$31,416	\$34,500

Airport Projects - by Airport

Airport Name - County

<i>FY</i>	<i>Project Component</i>	<i>Project Description</i>	<i>State Share</i>	<i>Local Share</i>	<i>Federal Share</i>	<i>Project Total</i>
WICKENBURG MUNI - MARICOPA						
2018	Runways:Install Runway <Vertical/Visual> Guidance System [PAPI/VASI/REIL/ALS/etc.] - Standards	Install ODALs for Rwy 23.	\$4,470	\$4,470	\$91,060	\$100,000
2019	Runways:Install Runway Lighting (HIRL, MIRL, TDZ, LAHSO Or CL) - Standards	Installation of LED MIRL/MITL (approx. 13,450 lf).	\$10,281	\$10,281	\$209,438	\$230,000
2020	Other:<Light/Mark/Remove> Obstructions - Standards	Removal of three hangars in the Rwy OFA.	\$3,129	\$3,129	\$63,742	\$70,000
Airport Total:			\$314,201	\$126,329	\$2,095,063	\$2,535,593
WINDOW ROCK - APACHE						
2016	Runways:Rehabilitate Runway - Reconstruct	Rehabilitate Rwy 02/20 (7,000 ft x 75 ft).	\$245,850	\$245,850	\$5,008,300	\$5,500,000
2020	Taxiways:Construct Taxiway - Capacity	Construct Twy A (7,055 ft x 35 ft). (Design/Construct)	\$107,280	\$107,280	\$2,185,440	\$2,400,000
Airport Total:			\$353,130	\$353,130	\$7,193,740	\$7,900,000
WINSLOW-LINDBERGH RGNL - NAVAJO						
2016	Runways:Rehabilitate Runway - Reconstruct	Construct Rwy 4-22 Reconstruction, Phase I (2,500 ft x 150 ft, approximately 42,000 sy).	\$89,400	\$89,400	\$1,821,200	\$2,000,000
2017	Security Fencing - Chain Link, Install (New)	Construct Airport Perimeter Fencing (38,200 lf).	\$607,500	\$67,500	\$0	\$675,000
2017	Runways:Rehabilitate Runway - Reconstruct	Construct Rwy 4-22 Reconstruction, Phase II (2,500 ft x 150 ft, approximately 42,000 sy).	\$89,400	\$89,400	\$1,821,200	\$2,000,000
2018	Runway, Rehabilitate	Design Rwy 11-29 Reconstruction (7,099 ft x 100 ft, approximately 79,000 sy).	\$270,000	\$30,000	\$0	\$300,000
2018	Runways:Rehabilitate Runway - Reconstruct	Construct Rwy 4-22 Reconstruction, Phase III (2,500 ft x 150 ft, approximately 42,000 sy).	\$89,400	\$89,400	\$1,821,200	\$2,000,000
2019	Taxiway, Construct (New)	Construct Twy A Holding Aprons (8,700 sy).	\$450,000	\$50,000	\$0	\$500,000
2019	Runways:Rehabilitate Runway - Reconstruct	Construct Rwy 11-29 Reconstruction, Phase I (3,600 ft x 100 ft, approximately 40,000 sy).	\$134,100	\$134,100	\$2,731,800	\$3,000,000
2020	Planning:Conduct <Environmental Assessment/Environmental Impact Statement/Feasibility> <Study/Update>	Conduct EA for land acquisitions for RWY 4-22 Pavement Shift and Levee Relocation: Parcel ID #103-09-003H (128 acres, State Land Department), and #103-09-002H (3 acres).	\$13,410	\$13,410	\$273,180	\$300,000
2020	Runways:Rehabilitate Runway - Reconstruct	Construct Rwy 11-29 Reconstruction, Phase II (3,500 ft x 100 ft, approximately 39,000 sy).	\$134,100	\$134,100	\$2,731,800	\$3,000,000
Airport Total:			\$1,877,310	\$697,310	\$11,200,380	\$13,775,000

Airport Projects - by Airport

Airport Name - County

<i>FY</i>	<i>Project Component</i>	<i>Project Description</i>	<i>State Share</i>	<i>Local Share</i>	<i>Federal Share</i>	<i>Project Total</i>
YUMA MCAS/YUMA INTL - YUMA						
2017	Taxiways:Install Taxiway Lighting (MITL) [Required By Part 139] - Safety/Security	Constr. 10,000 lf new MITLs on Twy F and Twy H with recon. of extg. electrical vault to include emergency generator.	\$111,750	\$111,750	\$2,276,500	\$2,500,000
2018	Taxiway, Rehabilitate	Design rehab. of PCC Twy H1 north of Rwy 21R/3L, 3,000 ft x 75 ft plus 276 ft x 456 ft runup apron approx. 40,000 sy.	\$90,000	\$10,000	\$0	\$100,000
2019	Taxiways:Rehabilitate Taxiway - Reconstruct	Constr. the rehab. of PCC Twy H1 north of Rwy 21R/3L, 3,000 ft x 75 ft plus 276 ft x 456 ft runup apron approx. 40,000 sy.	\$138,570	\$138,570	\$2,822,860	\$3,100,000
2020	APMS - Taxiway Pavement Preservation	Crack Seal and Rubberized Asphalt Emulsion Seal Coat TWZYM 30	\$68,031	\$7,559	\$0	\$75,590
2020	APMS - Taxiway Pavement Preservation	Crack Seal and Rubberized Asphalt Emulsion Seal Coat TWFYM 10	\$96,056	\$10,673	\$0	\$106,729
Airport Total:			\$504,407	\$278,552	\$5,099,360	\$5,882,319
All Requested FSLs, All Funded SLs, APMS and State Projects:			\$162,286,965	\$68,640,879	\$882,276,277	\$1,113,204,121