

2017-2021

Five-Year Transportation Facilities Construction Program

ADOT

Airport Capital Improvement Program



This page is left intentionally blank.

Table of Contents

Airport Program Overview	3
Airport Program	
Arizona Airports Map	7
Abbreviations/Acronyms	9
Summary of Recommended Airport Development Program Funds.....	11
State Funding Recommendations Listed by Airport.....	13
Appendix A: Airport Sponsor's Requests for FAA Funding.....	27

Various Helpful Web Links

Five-Year Transportation and Facilities Construction Program:

<http://azdot.gov/planning/transportation-programming/current-program>

Priority Planning Advisory Committee (PPAC):

<http://azdot.gov/about/boards-and-committees/PriorityPlanningAdvisoryCommittee>

Aeronautics Home Page:

<http://azdot.gov/planning/airportdevelopment>

Airport Development Programs:

<http://azdot.gov/planning/airportdevelopment/development-and-planning>

This page is left intentionally blank.

Airport Program Overview

Program Year 2017 (Fiscal Years 2017 – 2021)

In conjunction with Arizona's public airports and the Federal Aviation Administration (FAA), ADOT develops the Five-Year Airport Capital Improvement Program (ACIP) to parallel the FAA's Airport Capital Improvement Program. The ACIP has the dual objective of maximizing the use of State dollars for airport development and maximizing FAA funding for Arizona airports. Federal monies are derived mainly from taxes on airline tickets and are distributed by the Federal Aviation Administration directly to local airports through the National Airport Improvement Program.

State funding comes mainly from flight property tax, aircraft in-lieu tax, aircraft registration, and aviation fuel tax. The ACIP development process allocates money from the State Aviation Fund and distributes these funds across five major programs of airport development assistance. The State Transportation Board approves this distribution annually. The five programs are:

1) Federal/State/Local Grants (FSL)

This ADOT program will provide to a qualified airport sponsor half of its local share of an FAA grant which has been issued directly to the sponsor. Typically, these FAA grants are for 91.06% of a project's eligible cost. This would leave a state share of 4.47% if approved. ADOT will provide a separate Airport Development Grant directly to the same sponsor with validation of receiving an FAA grant. Projects utilizing FSL funds include: Airport design, construction, safety, security, capacity enhancement, equipment, maintenance, environmental, planning, and land acquisition.

2) State/Local Grants (SL)

This program provides Airport Development Funds to airport sponsors without FAA funding. These grants are usually for 90% of the project's eligible cost. Requests for these grants are subject to a State Transportation Board approved prioritization process. Once prioritized, funds allocated to this program determine which projects will be funded. Projects utilizing SL funds include: design, construction, safety, security, capacity enhancement, environmental, planning and land acquisition.

3) Airport Pavement Management System (APMS)

This program specializes in providing airport sponsors with assistance in major pavement maintenance projects. Every three years, ADOT performs a statewide analysis of the aviation pavement surfaces based on the Corps of Engineers Pavement Condition Index (PCI) methodology. Based on these results, ADOT conducts the design and construction administration at no cost to the sponsor while the sponsor is responsible for only 10% of the construction cost.

4) Airport Loan Program

This program gives airport sponsors the opportunity to borrow funds from the State Aviation Fund to build projects that are typical revenue producing in nature and therefore ineligible for Airport Development Grants. Loans are designed to benefit the local economy of the airport with attractive terms and interest rates. These loans have typically include

Airport Program Overview (continued)

projects like construction of new fuel farms, aircraft “T-hangars” and large aviation business hangars as well as other aviation needs on an airport.

5) Statewide System Planning and Services

ADOT performs state-wide system studies and projects. These projects are funded with both state funds only or with Grants from the FAA. These include State Airport System Planning, Economic Impact of Aviation, unique projects considered beneficial to the state as a system, Arizona flight charts and site location studies.

This ACIP shows all the requests of sixty-four public airports and their 703 projects for consideration by both the FAA and ADOT. Their total project costs over the next five years are just over \$1,087,000,000. These projects represent all Federal/State/Local and all State/Local funding desires on the part of the airport sponsors. This is approximately the same level of requests from the FY 2016 program.

This ACIP shows all 347 requests for FAA consideration (see Appendix A) for about \$930.3M. The State’s FSL program is designed to provide half of a sponsor’s share of a federally funded project. FAA will typically pay 91.06% of a project’s cost. Sponsor obligations FY 2017 will be 8.94% of a projects total cost, making the state’s participation 4.47%. Four communities (Kingman, Page, Show Low and Prescott) are eligible for 95% and one, Phoenix Sky Harbor, will receive 75% from the FAA. These translate to local shares of 5% or 25% making the State’s potential share of 2.5% or 12.5% respectively.

FAA evaluates and issues grants independently from ADOT. ADOT does not participate in the decision process regarding FAA grants. Over the last ten years, FAA has issued annual grant funds ranging from as low as \$40.0M in FY 2014 to a high of \$95.5M in FY2009. Last year, FY 2015, FAA issued \$83.3M in grants to public airport sponsors in the state of Arizona. The Ten-year average is \$70.9M. As such, ADOT recommends a set aside of funds that ensure funding is available only when a sponsor receives an FAA grant. This amount is recommended to be \$3.8M per year or a five year total of approximately \$19.0M.

One hundred eighty-four requests for State/Local grants for \$135.6M were received. These requests for SL grants were evaluated using the State Transportation Board’s prioritization process and resulted in 70 airport projects passing eligibility for State funding for approximately \$42.8M. This is 28% less than last year’s total of \$59.7M. These projects are shown in the following Program List. This investment of State funds will require about \$7.4M from local airport sponsors.

Airport Program Overview (continued)

The maximum total State grant funds to any one airport per fiscal year can not exceed 10% of the previous three year's average revenue into the State Aviation Fund. This maximum applies only to Federal/State/Local plus State/Local grant funds. For fiscal year 2017 the maximum grant funding is \$2.065M per airport.

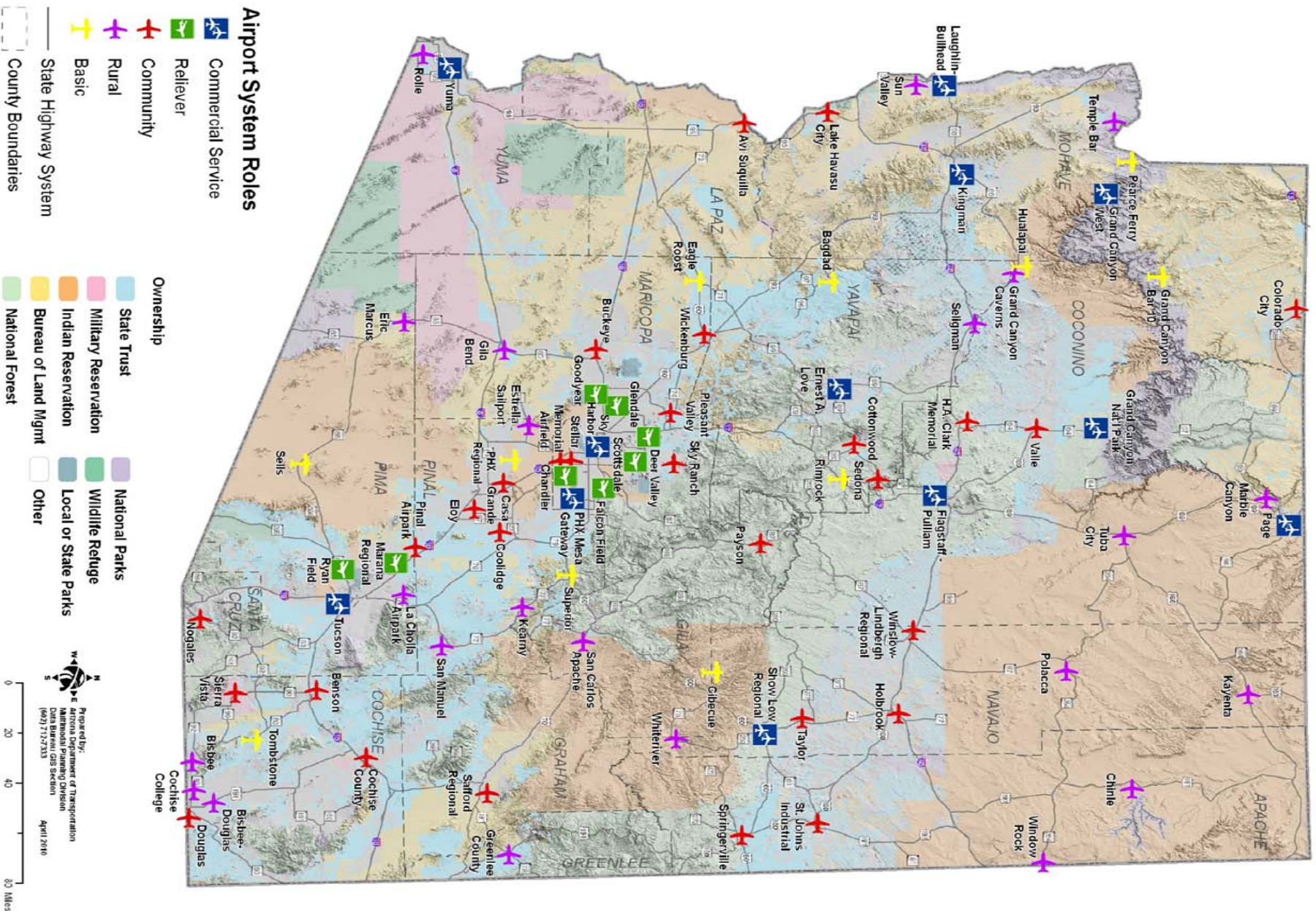
ADOT's Airport Development Program includes an Airport Pavement Maintenance System (APMS) statewide. The ACIP provides \$20.3M for statewide airport pavement maintenance. In FY2017, \$5.0M will be invested in Airport Pavement Management System (APMS) projects at public airports.

Statewide System Planning and Services which includes all design and construction management services for the APMS Program are funded by both Federal and State monies. The five-year ACIP proposes \$18.9M for statewide planning studies and services. In 2017, \$7.3M will be invested in statewide planning studies and services to benefit Arizona airports.

This document includes a map showing all Arizona airports included in the State Airport System Plan. Not all airports shown are eligible for project funding. Not all eligible airports have requested project funding in this plan.

This page is left intentionally blank.

Arizona Airports Map



This page is left intentionally blank.

ACIP 2017-2021 Acronyms

A/C	Advisory Circular (FAA)	INTL	International
ACP	Asphalt Cement Pavement	lb/lbs	Pound/pounds
ADG	Aircraft Design Group	LED	Light Emitting Diode
ALP	Airport Layout Plan	If	Linear Feet
AOA	Airport Operations Area	LPV	Lateral Precision with Vertical guidance
Apron	Aircraft Parking Area	MALSR	Medium-Intensity Approach Lighting System with Runway Alignment Indicator Lights
APMS	Airport Pavement Management System	MAP	Military Airport Program
APN	Assessor's Parcel Number	MIRL	Medium Intensity Runway Lights
ARC	Airport Reference Code	misc.	Miscellaneous
ARFF	Aircraft Rescue and Fire Fighting	MITL	Medium Intensity Taxiway Lights
ASLD	Arizona State Land Department	NAVAID	Navigational Aid
ASOS	Automated Surface Observation System	NEPA	National Environmental Policy Act
ASR	Airport Surveillance Radar	NOTAM	Notice to Airmen
ASV	Annual Service Volume	OFA	Object Free Area
ATCT	Air Traffic Control Tower	PAPI	Precision Approach Path Indicator
AWOS	Automated Weather Observation System	PCC	Portland Cement Concrete
BLM	Bureau of Land Management	PCI	Pavement Condition Index
BRL	Building Restriction Line	PFC	Porous Friction Course
CatEx	Categorical Exclusion	REIL	Runway End Identifier Lights
CERT	Certification	RGL	Runway Guard Light
DNL or LDN	Day/Night Equivalent Sound Level	ROD	Record of Decision
DWL	Dual Wheel Load	ROFA	Runway Obstacle Free Area
EA	Environmental Assessment	RSA	Runway Safety Area
EIS	Environmental Impact Statement	RSAT	Runway Safety Action Team
EMAS	Engineered Materials Arresting System	RPZ	Runway Protection Zone
FAA	Federal Aviation Administration	RVZ	Runway Visibility Zone
FBO	Fixed Base Operator	Rwy	Runway
FOD	Foreign Object Debris	SASP	State Airports System Plan
FONSI	Finding of No Significant Impact	sf	Square Feet
FAR	Federal Aviation Regulation	SRE	Snow Removal Equipment
FEMA	Federal Emergency Management Agency	SWPPP	Stormwater Pollution Prevention Plan
ft	Feet	sy	Square Yards
GA	General Aviation	TSA	Transportation Security Administration
GPS	Global Positioning System	Twy	Taxiway
HIRL	High Intensity Runway Lights		
ILS	Instrument Landing System		

This page is left intentionally blank.

ADOT Multimodal Planning Division - Aeronautics Group
Summary of Airport Development Program Dollars
Program Year 2017

Aeronautics Program/Fiscal Year	FY 2017	FY 2018	FY 2019	FY 2020	FY 2021
FAA Match Set-Aside (FSL)	\$ 3,800,000	\$ 3,800,000	\$ 3,800,000	\$ 3,800,000	\$ 3,800,000
State Funded Development Grants (SL)	\$ 9,225,750	\$ 9,183,250	\$ 9,465,850	\$ 7,265,689	\$ 7,620,440
Airport Pavement Maintenance System (APMS)	\$ 5,026,711	\$ 5,454,582	\$ 4,920,746	\$ 4,879,352	\$ -
Statewide Planning and Services (S)	\$ 7,360,000	\$ 2,520,000	\$ 2,812,000	\$ 2,772,000	\$ 3,524,200
Airport Development Loans (L)	\$ -	\$ -	\$ -	\$ -	\$ -
Total 5-Year Funded Program	\$ 25,412,461	\$ 20,957,832	\$ 20,998,596	\$ 18,717,041	\$ 14,944,640

This page left intentionally blank

Airport Projects - by Airport

Airport Name - County

<i>FY</i>	<i>Project Component</i>	<i>Project Description</i>	<i>State Share</i>	<i>Local Share</i>	<i>Federal Share</i>	<i>Project Total</i>
AERONAUTICS - MARICOPA						
2017	Airport Buildings, Construct	Design utilities to relocate Airport Surveillance Radar (ASR-8) to a preferred off-airport site per FAA Selection Study (July 2014). Current ASR-8 location is in the footprint of the Eastside Terminal Development Area.	\$1,500,000	\$0	\$0	\$1,500,000
2017	APMS - Runway Pavement Preservation	Conduct engineering design, bidding assistance, construction administration and inspection services.	\$1,920,000	\$0	\$0	\$1,920,000
2017	Master Plans	Preparation and publication of Statewide Aeronautical Charts	\$40,000	\$0	\$0	\$40,000
2017	Runway, Construct	Rebuild RW4/22 (5,830ft X 75ft), small GA apron and connecting taxiway	\$3,900,000	\$0	\$0	\$3,900,000
2018	APMS - Runway Pavement Preservation	Conduct engineering design, bidding assistance, construction administration and inspection services.	\$1,920,000	\$0	\$0	\$1,920,000
2018	Master Plans	Research and reporting aviation economic impacts on the State of Arizona	\$600,000	\$0	\$0	\$600,000
2019	Master Plans	Preparation and publication of Statewide Sectional Charts	\$40,000	\$0	\$0	\$40,000
2019	APMS - Runway Pavement Preservation	Conduct engineering design, bidding assistance, construction administration and inspection services.	\$2,772,000	\$0	\$0	\$2,772,000
2020	APMS - Runway Pavement Preservation	Conduct engineering design, bidding assistance, construction administration and inspection services.	\$2,772,000	\$0	\$0	\$2,772,000
2021	Master Plans	Collect and present typical statewide and regional information on airport revenue sources and develop data of airport land values.	\$75,000	\$0	\$0	\$75,000
2021	Master Plans	Research and production of all aviation economic impacts on the State of Arizona	\$400,000	\$0	\$0	\$400,000
2021	APMS - Runway Pavement Preservation	Conduct engineering design, bidding assistance, construction administration and inspection services.	\$3,049,200	\$0	\$0	\$3,049,200
Airport Total:			\$18,988,200	\$0	\$0	\$18,988,200
AK CHIN REGIONAL - PINAL						
2017	APMS - Runway Pavement Preservation	Crack Seal/Rubberized Asphalt Emulsion Seal Coat RW422AC 20	\$24,529	\$2,725	\$0	\$27,254
2017	APMS - Runway Pavement Preservation	Thin Asphalt Overlay/PFC RW422AC 10	\$277,691	\$30,855	\$0	\$308,546
Airport Total:			\$302,220	\$33,580	\$0	\$335,800

Airport Projects - by Airport

Airport Name - County

FY	Project Component	Project Description	State Share	Local Share	Federal Share	Project Total
AVI SUQUILLA - LA PAZ						
2017	APMS - Runway Pavement Preservation	Crack Seal/Rubberized Asphalt Emulsion Seal Coat RW119AS 10	\$288,742	\$32,082	\$0	\$320,824
2020	APMS - Taxiway Pavement Preservation	Crack Seal/Rubberized Asphalt Emulsion Seal Coat TWAAS 10	\$186,346	\$20,705	\$0	\$207,051
2020	APMS - Taxiway Pavement Preservation	Crack Seal/Rubberized Asphalt Emulsion Seal Coat TWAAS 20	\$103,528	\$11,503	\$0	\$115,031
2020	APMS - Taxiway Pavement Preservation	Crack Seal/Rubberized Asphalt Emulsion Seal Coat TWBAS 10	\$77,065	\$8,563	\$0	\$85,628
2020	APMS - Taxiway Pavement Preservation	Crack Seal/Rubberized Asphalt Emulsion Seal Coat TWBAS 20	\$59,059	\$6,562	\$0	\$65,621
Airport Total:			\$714,740	\$79,415	\$0	\$794,155
BAGDAD - YAVAPAI						
2018	APMS - Runway Pavement Preservation	Thin Asphalt Overlay/PFC RW523BG 10	\$410,352	\$45,595	\$0	\$455,947
Airport Total:			\$410,352	\$45,595	\$0	\$455,947
BENSON MUNI - COCHISE						
2017	Perimeter Fencing - Barbed Wire, Install (New)	Constr. perimeter fence (approx. 16,000 lf) and access gates	\$360,000	\$40,000	\$0	\$400,000
2019	APMS - Runway Pavement Preservation	Crack Seal/Rubberized Asphalt Emulsion Seal Coat RW1028BN 10	\$161,384	\$17,931	\$0	\$179,315
2019	APMS - Apron Pavement Preservation	Crack Seal/Rubberized Asphalt Emulsion Seal Coat A01BN 30	\$2,893	\$321	\$0	\$3,214
2020	APMS - Taxiway Pavement Preservation	Thin Asphalt Overlay/PFC TWABN 10	\$302,609	\$33,623	\$0	\$336,232
Airport Total:			\$826,886	\$91,875	\$0	\$918,761
BUCKEYE MUNI - MARICOPA						
2018	Land For Protection (Safety Areas), Acquire	Land Acquisition	\$1,800,000	\$200,000	\$0	\$2,000,000
Airport Total:			\$1,800,000	\$200,000	\$0	\$2,000,000
CASA GRANDE MUNI - PINAL						
2020	APMS - Apron Pavement Preservation	Thin Asphalt Overlay/PFC A01CG 40	\$506,453	\$56,273	\$0	\$562,726
Airport Total:			\$506,453	\$56,273	\$0	\$562,726

Airport Projects - by Airport

Airport Name - County

FY	Project Component	Project Description	State Share	Local Share	Federal Share	Project Total
CHANDLER MUNI - MARICOPA						
2017	APMS - Runway Pavement Preservation	Crack Seal/Rubberized Asphalt Emulsion Seal Coat RW4R22LCH 10	\$204,166	\$22,685	\$0	\$226,851
Airport Total:			\$204,166	\$22,685	\$0	\$226,851
COCHISE COLLEGE - COCHISE						
2017	APMS - Runway Pavement Preservation	Crack Seal/Rubberized Asphalt Emulsion Seal Coat RW523CC 10	\$192,644	\$21,405	\$0	\$214,049
2017	Runway, Rehabilitate	Recon. Rwy 23 displaced threshold (350 ft x 60 ft)	\$261,000	\$29,000	\$0	\$290,000
Airport Total:			\$453,644	\$50,405	\$0	\$504,049
COCHISE COUNTY - COCHISE						
2018	APMS - Runway Pavement Preservation	Crack Seal/Rubberized Asphalt Emulsion Seal Coat RW321CO 10	\$228,015	\$25,335	\$0	\$253,350
2020	APMS - Apron Pavement Preservation	Thin Asphalt Overlay/PFC A01CO 20	\$160,372	\$17,819	\$0	\$178,191
2020	APMS - Taxiway Pavement Preservation	Crack Seal/Rubberized Asphalt Emulsion Seal Coat TWACO 10	\$53,665	\$5,963	\$0	\$59,628
Airport Total:			\$442,052	\$49,117	\$0	\$491,169
COLORADO CITY MUNI - MOHAVE						
2017	APMS - Runway Pavement Preservation	Crack Seal/Rubberized Asphalt Emulsion Seal Coat RW1129CL 10	\$226,706	\$25,190	\$0	\$251,896
2020	Security Fencing - Chain Link, Install (New)	Install 6 ft Chain Link Fence with Barbed Wire (33,700 lf)	\$607,500	\$67,500	\$0	\$675,000
Airport Total:			\$834,206	\$92,690	\$0	\$926,896
COTTONWOOD - YAVAPAI						
2019	APMS - Runway Pavement Preservation	Crack Seal/Rubberized Asphalt Emulsion Seal Coat RW1432CT 10	\$164,356	\$18,262	\$0	\$182,618
Airport Total:			\$164,356	\$18,262	\$0	\$182,618
DOUGLAS MUNI - COCHISE						
2017	Runway, Rehabilitate	Rehabilitate Runway 3/21 (5760 ft x 75 ft). Design Only.	\$252,000	\$28,000	\$0	\$280,000
Airport Total:			\$252,000	\$28,000	\$0	\$280,000

Airport Projects - by Airport

Airport Name - County

<i>FY</i>	<i>Project Component</i>	<i>Project Description</i>	<i>State Share</i>	<i>Local Share</i>	<i>Federal Share</i>	<i>Project Total</i>
ELOY MUNI - PINAL						
2017	Land For Development, Acquire	Acquire approx. 15 acres for Twy relocation and associated drainage improvements APN 404-05-010J; APN 402-260-03A	\$270,000	\$30,000	\$0	\$300,000
2017	Airport Drainage, Improve	Constr. misc. drainage improvements as determined by new Airport Drainage Study. This would only include projects that could receive CatEx.	\$180,000	\$20,000	\$0	\$200,000
2018	Security Fencing - Chain Link, Install (New)	Installation of approx. 3,600 lf of security fence (chain link) including 2 new automatic vehicle gates.	\$90,000	\$10,000	\$0	\$100,000
2018	APMS - Runway Pavement Preservation	Crack Seal/Rubberized Ashpalt Emulsion Seal Coat RW220EM 10	\$140,727	\$15,636	\$0	\$156,363
2018	Airport Drainage, Improve	Constr. misc. drainage improvements including approx. 2,600 lf of drainage channel and a box culvert as determined by Airport Drainage Study (Ph. 1). This would include projects which have received a FONSI from FAA.	\$900,000	\$100,000	\$0	\$1,000,000
2019	Airport Drainage, Improve	Constr. of misc. drainage improvements including approx. 2,000 lf of drainage channel and culverts as determined by Airport Drainage Study (Ph. 2). This would include projects which have received a FONSI from FAA.	\$900,000	\$100,000	\$0	\$1,000,000
Airport Total:			\$2,480,727	\$275,636	\$0	\$2,756,363
ERNEST A. LOVE FIELD - YAVAPAI						
2017	Runway Vertical/Visual Guidance System, Install/Upgrade	Design and construction of upgrades for Rwy 3L/21R (PAPI both ends).	\$103,500	\$11,500	\$0	\$115,000
2017	Obstructions, Light/Mark/Remove (Safety Areas)	Design/Constr. Mitigation of on-airport obstructions to FAR Part 77 surfaces, approx 150 obstructions, 60 building points, 40+ trees & others as determined by FAA. (Includes objects on airport and City-owned land, and public ROW)	\$360,000	\$40,000	\$0	\$400,000
2017	Obstructions, Light/Mark/Remove (Safety Areas)	Environmental Assessment for relocation of the existing airport terminal.	\$180,000	\$20,000	\$0	\$200,000
2018	APMS - Taxiway Pavement Preservation	Thin Asphalt Overlay/PFC TWAPR 10	\$280,436	\$31,160	\$0	\$311,596
2018	APMS - Taxiway Pavement Preservation	Thin Asphalt Overlay/PFC TWKPR 10	\$39,542	\$4,393	\$0	\$43,935
2018	APMS - Runway Pavement Preservation	Crack Seal/Rubberized Ashpalt Emulsion Seal Coat RW3R21LPR 20	\$29,051	\$3,228	\$0	\$32,279
2019	Land For Protection (Safety Areas), Acquire	Ph.1 - EA for acquisition of development & approach protection land for Rwy 21L Extension to 10,570 ft (138 ac of APN 103-01-021G) and RWwy12/30 RPZs (8.4 ac APNs 102-04-001A, 102-03-008, 102-06-001 and 102-06-006).	\$315,000	\$35,000	\$0	\$350,000

Airport Projects - by Airport

Airport Name - County

FY	Project Component	Project Description	State Share	Local Share	Federal Share	Project Total
ERNEST A. LOVE FIELD - YAVAPAI						
2021	Runway, Construct	Design Rwy 12/30 shift (approx. 150 ft East Southeast) for RSA requirements to include paving Rwy/Twy shoulders, realigning Twy F west of Twy C, Twy E lighting, drainage improvements between Twy F and Rwy 12/30 in the RSA.	\$585,000	\$65,000	\$0	\$650,000
Airport Total:			\$1,892,529	\$210,281	\$0	\$2,102,810
FALCON FLD - MARICOPA						
2018	Runway MIRL/HIRL, Install	Install signage and MIRLS for Rwy 4R/22L & 4R/22L.	\$720,000	\$80,000	\$0	\$800,000
2019	APMS - Runway Pavement Preservation	Crack Seal/Rubberized Asphalt Emulsion Seal Coat RW4R22LMF 10	\$271,894	\$30,211	\$0	\$302,105
2020	Land For Protection (Safety Areas), Acquire	Acquire easement for part of Rwy 22 approach.	\$491,839	\$54,649	\$0	\$546,488
Airport Total:			\$1,483,733	\$164,860	\$0	\$1,648,593
FLAGSTAFF PULLIAM - COCONINO						
2017	Airport Drainage, Improve	Design report to address drainage issues throughout the airport.	\$315,000	\$35,000	\$0	\$350,000
2019	Guidance Signage, Rehabilitate	Design of grading and paving around the perimeter of the Instrument landing system (ILS) antenna	\$720,000	\$80,000	\$0	\$800,000
2019	APMS - Taxiway Pavement Preservation	Mill and Replace PFC TWWFG 20	\$207,998	\$23,111	\$0	\$231,109
2020	APMS - Runway Pavement Preservation	Crack Seal/Rubberized Asphalt Emulsion Seal Coat RW321FG 20	\$134,328	\$14,925	\$0	\$149,253
Airport Total:			\$1,377,326	\$153,036	\$0	\$1,530,362
GILA BEND MUNI - MARICOPA						
2017	APMS - Runway Pavement Preservation	Crack Seal/Rubberized Asphalt Emulsion Seal Coat RW422GB 10	\$183,103	\$20,345	\$0	\$203,448
Airport Total:			\$183,103	\$20,345	\$0	\$203,448
GLENDALE MUNI - MARICOPA						
2017	Land For Protection (Safety Areas), Acquire	Land Acquisition reimbursement for the purchase of Conair property in the RPZ of Rwy 19 of approximately 40 acres. Parcel numbers 142-59-002-A and 142-59-002-B.	\$2,120,000	\$680,000	\$0	\$2,800,000
2018	Land For Protection (Safety Areas), Acquire	Land Acquisition reimbursement for the purchase of Conair property in the RPZ of Rwy 19 of approximately 40 acres. Parcel numbers 142-59-002-A and 142-59-002-B.	\$2,087,550	\$231,950	\$0	\$2,319,500
2019	Land For Protection (Safety Areas), Acquire	Land Acquisition reimbursement for the purchase of Conair property in the RPZ of Rwy 19 of approximately 40 acres. Parcel numbers 142-59-002-A and 142-59-002-B.	\$2,070,000	\$230,000	\$0	\$2,300,000

Airport Projects - by Airport

Airport Name - County

FY	Project Component	Project Description	State Share	Local Share	Federal Share	Project Total
GLENDAL MUNI - MARICOPA						
2019	APMS - Taxiway Pavement Preservation	Thin Asphalt Overlay/PFC TWAGL 10	\$617,428	\$68,603	\$0	\$686,031
2020	Land For Protection (Safety Areas), Acquire	Land Acquisition reimbursement for the purchase of Conair property in the RPZ of Rwy 19 of approximately 40 acres. Parcel numbers 142-59-002-A and 142-59-002-B.	\$2,070,000	\$230,000	\$0	\$2,300,000
2021	Land For Protection (Safety Areas), Acquire	Land Acquisition reimbursement for the purchase of Conair property in the RPZ of Rwy 19 of approximately 40 acres. Parcel numbers 142-59-002-A and 142-59-002-B.	\$2,070,000	\$230,000	\$0	\$2,300,000
Airport Total:			\$11,034,978	\$1,670,553	\$0	\$12,705,531
GRAND CANYON NATIONAL PARK - COCONINO						
2020	APMS - Apron Pavement Preservation	Thin Asphalt Overlay/PFC A01GC 10	\$151,819	\$16,869	\$0	\$168,688
Airport Total:			\$151,819	\$16,869	\$0	\$168,688
GREENLEE COUNTY - GREENLEE						
2017	Land For Protection (Safety Areas), Acquire	Acquire 2.7 acres for Rwy 7 RPZ (State Land, no Parcel ID available)	\$12,150	\$1,350	\$0	\$13,500
2019	APMS - Runway Pavement Preservation	Crack Seal/Rubberized Asphalt Emulsion Seal Coat RW725GR 10	\$181,833	\$20,204	\$0	\$202,037
2020	APMS - Taxiway Pavement Preservation	Crack Seal/Rubberized Asphalt Emulsion Seal Coat TWAGR 20	\$45,376	\$5,042	\$0	\$50,418
Airport Total:			\$239,359	\$26,596	\$0	\$265,955
H.A. CLARK MEMORIAL FIELD - COCONINO						
2020	Apron, Construct (New)	Phased design of GA apron expansion(approx. 4,000 sy, including relocated helipad(s).	\$135,000	\$15,000	\$0	\$150,000
2020	APMS - Apron Pavement Preservation	Crack Seal/Rubberized Asphalt Emulsion Seal Coat A02WI 20	\$9,533	\$1,059	\$0	\$10,592
2020	APMS - Apron Pavement Preservation	Crack Seal/Rubberized Asphalt Emulsion Seal Coat A02WI 30	\$1,714	\$190	\$0	\$1,904
2020	APMS - Taxiway Pavement Preservation	Crack Seal/Rubberized Asphalt Emulsion Seal Coat TWAWI 10	\$177,909	\$19,768	\$0	\$197,677
2021	Apron, Construct (New)	Construct GA Apron Ph.1 (approx. 4,000 sy including relocation of helipads).	\$675,000	\$75,000	\$0	\$750,000
Airport Total:			\$999,156	\$111,017	\$0	\$1,110,173

Airport Projects - by Airport

Airport Name - County

<i>FY</i>	<i>Project Component</i>	<i>Project Description</i>	<i>State Share</i>	<i>Local Share</i>	<i>Federal Share</i>	<i>Project Total</i>
KINGMAN - MOHAVE						
2017	APMS - Runway Pavement Preservation	Crack Seal/Rubberized Asphalt Emulsion Seal Coat RW321KG 10	\$479,930	\$53,326	\$0	\$533,256
2018	APMS - Taxiway Pavement Preservation	Thin Asphalt Overlay/PFC TWAKG 10	\$219,505	\$24,389	\$0	\$243,894
Airport Total:			\$699,435	\$77,715	\$0	\$777,150
LAKE HAVASU CITY - MOHAVE						
2017	Runway Vertical/Visual Guidance System, Install/Upgrade	Design & constr. replacement of Rwy 32 PAPIs	\$112,500	\$12,500	\$0	\$125,000
2019	APMS - Runway Pavement Preservation	Crack Seal/Rubberized Asphalt Emulsion Seal Coat RW1432LH 10	\$389,972	\$43,330	\$0	\$433,302
Airport Total:			\$502,472	\$55,830	\$0	\$558,302
LAUGHLIN/BULLHEAD INTL - MOHAVE						
2018	Airport Drainage, Improve	Slope stabilization of approx. 14 acres of hillside located immediately east of the GA Hangars and GA Apron	\$900,000	\$100,000	\$0	\$1,000,000
2019	Airport Drainage, Improve	The project is located at the southwest corner of the airport between the RSA and the perimeter road. Drainage improvements will help reduce significant erosion problems.	\$900,000	\$100,000	\$0	\$1,000,000
2020	Airport Drainage, Improve	Misc. erosion protection & drainage improvements along Rwy 16/34.	\$450,000	\$50,000	\$0	\$500,000
Airport Total:			\$2,250,000	\$250,000	\$0	\$2,500,000
MARANA RGNL - PIMA						
2018	APMS - Taxiway Pavement Preservation	Thin Asphalt Overlay/PFC TWEAV 10	\$241,798	\$26,866	\$0	\$268,664
2019	Rotating Beacon, Rehabilitate	Updating of the current Beacon	\$22,500	\$2,500	\$0	\$25,000
Airport Total:			\$264,298	\$29,366	\$0	\$293,664
NOGALES INTL - SANTA CRUZ						
2018	Airport Drainage, Improve	Improve ROFA & Erosion Mitigation (Design) (approx. 1.88 acres)	\$88,200	\$9,800	\$0	\$98,000
2019	Airport Drainage, Improve	Improve ROFA & Erosion Mitigation (approximately 1.88 acres) (Constr.)	\$1,008,000	\$112,000	\$0	\$1,120,000
2019	APMS - Taxiway Pavement Preservation	Thin Asphalt Overlay/PFC TWANG 10	\$700,978	\$77,886	\$0	\$778,864
2021	Apron, Construct (New)	Terminal Apron Expansion (Design) (approx. 3,300 sy)	\$41,580	\$4,620	\$0	\$46,200
Airport Total:			\$1,838,758	\$204,306	\$0	\$2,043,064

Airport Projects - by Airport

Airport Name - County

FY	Project Component	Project Description	State Share	Local Share	Federal Share	Project Total
PAGE MUNI - COCONINO						
2018	APMS - Taxiway Pavement Preservation	Crack Seal/Rubberized Asphalt Emulsion Seal Coat TWAPM 20	\$10,804	\$1,201	\$0	\$12,005
2018	APMS - Runway Pavement Preservation	Crack Seal/Rubberized Asphalt Emulsion Seal Coat RW1533PM 30	\$18,112	\$2,013	\$0	\$20,125
2018	APMS - Runway Pavement Preservation	Crack Seal/Rubberized Asphalt Emulsion Seal Coat RW1533PM 20	\$31,964	\$3,551	\$0	\$35,515
2018	APMS - Runway Pavement Preservation	Crack Seal/Rubberized Asphalt Emulsion Seal Coat RW1533PM 10	\$371,696	\$41,300	\$0	\$412,996
2020	APMS - Taxiway Pavement Preservation	Mill and Replace PFC TWAPM 20	\$648,549	\$72,061	\$0	\$720,610
2020	APMS - Taxiway Pavement Preservation	Crack Seal/Rubberized Asphalt Emulsion Seal Coat TWAPM 40	\$10,085	\$1,121	\$0	\$11,206
Airport Total:			\$1,091,210	\$121,247	\$0	\$1,212,457
PAYSON - GILA						
2017	Wildlife Deterrent Fencing, Install (New)	Constr. 8 ft chain link fence w/ barbed wire (approx 790 lf).	\$85,500	\$9,500	\$0	\$95,000
2021	Airport Buildings, Construct	Constr. Aircraft wash rack	\$135,000	\$15,000	\$0	\$150,000
Airport Total:			\$220,500	\$24,500	\$0	\$245,000
PHOENIX DEER VALLEY - MARICOPA						
2017	APMS - Taxiway Pavement Preservation	Thin Asphalt Overlay/PFC TWA10DV 10	\$4,628	\$514	\$0	\$5,142
2017	APMS - Runway Pavement Preservation	Thin Asphalt Overlay/PFC RW07RDV 20	\$735,700	\$81,744	\$0	\$817,444
2018	Runway Vertical/Visual Guidance System, Install/Upgrade	Upgrade PAPI System	\$297,000	\$33,000	\$0	\$330,000
2019	APMS - Taxiway Pavement Preservation	Thin Asphalt Overlay/PFC TWADV 10	\$26,510	\$2,945	\$0	\$29,455
2019	APMS - Taxiway Pavement Preservation	Thin Asphalt Overlay/PFC TWSRDV 10	\$15,017	\$1,669	\$0	\$16,686
2019	APMS - Taxiway Pavement Preservation	Thin Asphalt Overlay/PFC TWSRDV 30	\$15,784	\$1,754	\$0	\$17,538
2021	Runway, Extend	Install Rwy blast pads	\$250,200	\$27,800	\$0	\$278,000
Airport Total:			\$1,344,839	\$149,426	\$0	\$1,494,265
PHOENIX GOODYEAR - MARICOPA						
2017	APMS - Taxiway Pavement Preservation	Mill and Replace PFC TWAGY 10	\$27,275	\$3,031	\$0	\$30,306
2017	APMS - Runway Pavement Preservation	Mill and Replace PFC RW321GY 30	\$474,912	\$52,768	\$0	\$527,680
2017	APMS - Runway Pavement Preservation	Mill and Replace PFC RW321GY 60	\$229,378	\$25,487	\$0	\$254,865
2018	APMS - Taxiway Pavement Preservation	Mill and Replace PFC TWA3GY 30	\$28,504	\$3,167	\$0	\$31,671
2018	APMS - Runway Pavement Preservation	Mill and Replace PFC RW321GY 50	\$778,910	\$86,546	\$0	\$865,456
2018	APMS - Taxiway Pavement Preservation	Mill and Replace PFC TWA3GY 10	\$17,554	\$1,951	\$0	\$19,505
2019	Airport Drainage, Improve	Infield paving in the vicinity of Twy Connectors A2, A3, and A8.	\$638,100	\$70,900	\$0	\$709,000

Airport Projects - by Airport

Airport Name - County

FY	Project Component	Project Description	State Share	Local Share	Federal Share	Project Total
PHOENIX GOODYEAR - MARICOPA						
2019	APMS - Runway Pavement Preservation	Mill and Replace PFC RW321GY 40	\$249,477	\$27,720	\$0	\$277,197
2019	APMS - Taxiway Pavement Preservation	Mill and Replace PFC TWAGY 40	\$36,024	\$4,003	\$0	\$40,027
2020	APMS - Taxiway Pavement Preservation	Mill and Replace PFC TWAGY 30	\$633,268	\$70,363	\$0	\$703,631
Airport Total:			\$3,113,402	\$345,936	\$0	\$3,459,338
PHOENIX SKY HARBOR INTL - MARICOPA						
2017	Airport Drainage, Improve	Upgrade airfield utility access points by raising utility vaults, pave adjacent infields and constr. new airfield sign bases and conduit at locations that meet airport design standards - Ph. III.	\$2,120,000	\$680,000	\$0	\$2,800,000
2018	Airport Drainage, Improve	Upgrade airfield utility access points by raising utility vaults, pave adjacent infields and constr. new airfield sign bases and conduit at locations that meet Airport Design Standards - Ph. IV.	\$2,120,000	\$680,000	\$0	\$2,800,000
2019	Airport Drainage, Improve	Upgrade airfield utility access points by raising utility vaults, pave adjacent infields and constr. new airfield sign bases and conduit at locations that meet airport design standards - Ph. V.	\$2,120,000	\$680,000	\$0	\$2,800,000
2020	Airport Drainage, Improve	Upgrade airfield utility access points by raising utility vaults, pave adjacent infields and constr. new airfield sign bases and conduit at locations that meet airport design standards - Ph. VI.	\$2,120,000	\$680,000	\$0	\$2,800,000
2021	Airport Drainage, Improve	Upgrade airfield utility access points by raising utility vaults, pave adjacent infields and constr. new airfield sign bases and conduit at locations that meet airport design standards - Ph. VII.	\$2,120,000	\$680,000	\$0	\$2,800,000
Airport Total:			\$10,600,000	\$3,400,000	\$0	\$14,000,000
PHOENIX-MESA GATEWAY - MARICOPA						
2021	Taxiway, Rehabilitate	Design/Recon. a section of Twy W, located north of Twy W/T intersection, approx. 22 ft x 405 ft.	\$1,027,800	\$114,200	\$0	\$1,142,000
Airport Total:			\$1,027,800	\$114,200	\$0	\$1,142,000
ROLLE AIRFIELD - YUMA						
2017	APMS - Taxiway Pavement Preservation	Crack Seal/Rubberized Asphalt Emulsion Seal Coat TWARL 10	\$5,997	\$666	\$0	\$6,663
2017	APMS - Runway Pavement Preservation	Crack Seal/Rubberized Asphalt Emulsion Seal Coat RW1735RL 10	\$77,613	\$8,624	\$0	\$86,237
Airport Total:			\$83,610	\$9,290	\$0	\$92,900

Airport Projects - by Airport

Airport Name - County

<i>FY</i>	<i>Project Component</i>	<i>Project Description</i>	<i>State Share</i>	<i>Local Share</i>	<i>Federal Share</i>	<i>Project Total</i>
RYAN FIELD - PIMA						
2017	Airport Drainage, Improve	Design an earth dike (approx. 3,500 lf) and adjacent drainage channel in accordance with FEMA and US Army Corps of Engineers standards.	\$264,600	\$29,400	\$0	\$294,000
2017	APMS - Runway Pavement Preservation	Crack Seal/Rubberized Asphalt Emulsion Seal Coat RW6R24LRY 10	\$213,623	\$23,736	\$0	\$237,359
2018	APMS - Taxiway Pavement Preservation	Thin Asphalt Overlay/PFC TWERY 10	\$121,164	\$13,463	\$0	\$134,627
2019	APMS - Taxiway Pavement Preservation	Thin Asphalt Overlay/PFC TWBRY 10	\$323,188	\$35,910	\$0	\$359,098
2019	Land For Protection (Safety Areas), Acquire	Environmental Assessment for land acquisition needed for runway 15-33 protection zone (79.8 acres).	\$81,000	\$9,000	\$0	\$90,000
2020	APMS - Taxiway Pavement Preservation	Crack Seal/Rubberized Asphalt Emulsion Seal Coat TWARY 10	\$136,713	\$15,190	\$0	\$151,903
2021	Land For Protection (Safety Areas), Acquire	Land Acquisition for RSA (79.8 acres) of crosswind rwy	\$715,860	\$79,540	\$0	\$795,400
Airport Total:			\$1,856,148	\$206,239	\$0	\$2,062,387
SAFFORD RGNL - GRAHAM						
2017	Runway Vertical/Visual Guidance System, Install/Upgrade	Rehab. Rwy 8/26 REILs (Constr.)	\$90,000	\$10,000	\$0	\$100,000
2017	APMS - Runway Pavement Preservation	Crack Seal/Rubberized Asphalt Emulsion Seal Coat RW1230SF 10	\$290,485	\$32,276	\$0	\$322,761
2020	Runway, Rehabilitate	Recon. Rwy 8/26 (Design)	\$238,500	\$26,500	\$0	\$265,000
Airport Total:			\$618,985	\$68,776	\$0	\$687,761
SAN CARLOS APACHE - GILA						
2018	APMS - Taxiway Pavement Preservation	This Asphalt Overlay/PFC TWASA 20	\$231,075	\$25,675	\$0	\$256,750
2019	APMS - Taxiway Pavement Preservation	Thin Asphalt Overlay/PFC TWASA 10	\$260,401	\$28,933	\$0	\$289,334
2020	APMS - Apron Pavement Preservation	Thin Asphalt Overlay/PFC A01SA 10	\$231,525	\$25,725	\$0	\$257,250
2020	APMS - Apron Pavement Preservation	Thin Asphalt Overlay/PFC A02SA 20	\$66,051	\$7,339	\$0	\$73,390
Airport Total:			\$789,052	\$87,672	\$0	\$876,724
SAN MANUEL - PINAL						
2017	Obstructions, Light/Mark/Remove (Safety Areas)	After completing an ultimate airspace analysis, several penetrations of FAR Part 77 airspace were identified.	\$360,000	\$40,000	\$0	\$400,000
2019	APMS - Runway Pavement Preservation	Crack Seal/Rubberized Asphalt Emulsion Seal Coat RW1129SM 10	\$173,965	\$19,329	\$0	\$193,294
2020	Perimeter Fencing - Barbed Wire, Install (New)	Approx. 14,600 lf of security fencing will be designed and installed around the Airport's perimeter.	\$337,500	\$37,500	\$0	\$375,000
Airport Total:			\$871,465	\$96,829	\$0	\$968,294

Airport Projects - by Airport

Airport Name - County

FY	Project Component	Project Description	State Share	Local Share	Federal Share	Project Total
SCOTTSDALE - MARICOPA						
2017	Airport Drainage, Improve	Place additional rock in the approach area of Rwy 3, approx. 44,000 sy. - Phase 2	\$360,000	\$40,000	\$0	\$400,000
2019	APMS - Taxiway Pavement Preservation	Thin Asphalt Overlay/PFC TWBSC 10	\$704,413	\$78,268	\$0	\$782,681
2019	APMS - Taxiway Pavement Preservation	Crack Seal/Rubberized Asphalt Emulsion Seal Coat TWASC 20	\$8,018	\$891	\$0	\$8,909
2020	APMS - Apron Pavement Preservation	Crack Seal/Rubberized Asphalt Emulsion Seal Coat A01SC 100	\$2,800	\$311	\$0	\$3,111
2020	APMS - Taxiway Pavement Preservation	Crack Seal/Rubberized Asphalt Emulsion Seal Coat TWASC 30	\$110,398	\$12,267	\$0	\$122,665
Airport Total:			\$1,185,629	\$131,737	\$0	\$1,317,366
SELIGMAN - YAVAPAI						
2018	APMS - Runway Pavement Preservation	Crack Seal/Rubberized Asphalt Emulsion Seal Coat TW422SG 10	\$170,473	\$18,941	\$0	\$189,414
Airport Total:			\$170,473	\$18,941	\$0	\$189,414
SHOW LOW RGNL - NAVAJO						
2017	Runway, Rehabilitate	Rehabilitate Rwy 6/24 (7,200 ft x 100 ft) Mill & Overlay (Design Only)	\$216,000	\$24,000	\$0	\$240,000
2019	Airport Drainage, Improve	Drainage Improvements - south apron	\$121,500	\$13,500	\$0	\$135,000
Airport Total:			\$337,500	\$37,500	\$0	\$375,000
SIERRA VISTA MUNI-LIBBY AAF - COCHISE						
2020	APMS - Taxiway Pavement Preservation	Mill and Replace PFC TWGSV 10	\$458,402	\$50,934	\$0	\$509,336
Airport Total:			\$458,402	\$50,934	\$0	\$509,336
SPRINGERVILLE MUNI - APACHE						
2017	Guidance Signage, Install (New)	Conduct signage and marking study.	\$31,500	\$3,500	\$0	\$35,000
2018	APMS - Taxiway Pavement Preservation	Thin Asphalt Overlay/PFC TWBSP 20	\$8,938	\$993	\$0	\$9,931
2018	APMS - Runway Pavement Preservation	Thin Asphalt Overlay/PFC RW321SP 10	\$826,264	\$91,807	\$0	\$918,071
2020	Perimeter Fencing - Barbed Wire, Install (New)	Install approximately 13,000 LF of perimeter fence (six foot with three strands of barbed wire) Ph. 2, northwest to southeast side of airport perimeter.	\$561,600	\$62,400	\$0	\$624,000
Airport Total:			\$1,428,302	\$158,700	\$0	\$1,587,002

Airport Projects - by Airport

Airport Name - County

FY	Project Component	Project Description	State Share	Local Share	Federal Share	Project Total
ST JOHNS INDUSTRIAL AIR PARK - APACHE						
2018	APMS - Runway Pavement Preservation	Thin Asphalt Overlay/PFC RW1432SJ 10	\$568,237	\$63,137	\$0	\$631,374
2020	APMS - Taxiway Pavement Preservation	Crack Seal/Rubberized Asphalt Emulsion Seal Coat TWASJ 30	\$12,350	\$1,372	\$0	\$13,722
2020	APMS - Taxiway Pavement Preservation	Crack Seal/Rubberized Asphalt Emulsion Seal Coat TWASJ 20	\$77,061	\$8,562	\$0	\$85,623
Airport Total:			\$657,648	\$73,071	\$0	\$730,719
SUPERIOR MUNI - PINAL						
2017	Master Plans	Update Airport Master Plan in digital format including an ALP update.	\$237,500	\$12,500	\$0	\$250,000
2020	Perimeter Fencing - Barbed Wire, Install (New)	Perimeter fencing running approximately 10,200 lf	\$118,750	\$6,250	\$0	\$125,000
Airport Total:			\$356,250	\$18,750	\$0	\$375,000
TAYLOR - NAVAJO						
2017	Land For Protection (Safety Areas), Acquire	Acquire 2.9 acres for Rwy 3 RPZ transitional Surface - Exhibit A parcel #9, Provide record of survey and ALP As-Built.	\$54,000	\$6,000	\$0	\$60,000
2017	APMS - Runway Pavement Preservation	Crack Seal/Rubberized Asphalt Emulsion Seal Coat RW321TA 10	\$252,071	\$28,008	\$0	\$280,079
2020	APMS - Taxiway Pavement Preservation	Crack Seal/Rubberized Asphalt Emulsion Seal Coat TWATA 20	\$103,203	\$11,467	\$0	\$114,670
Airport Total:			\$409,274	\$45,475	\$0	\$454,749
TOMBSTONE MUNI - COCHISE						
2017	Obstructions, Light/Mark/Remove (Safety Areas)	Relocate Twy - Approx. 500 ft x 25 ft	\$118,750	\$6,250	\$0	\$125,000
2017	Runway Vertical/Visual Guidance System, Install/Upgrade	Location survey for Rwy 6/24 for PAPI	\$23,750	\$1,250	\$0	\$25,000
2018	Land For Protection (Safety Areas), Acquire	Acquire 5 acres of State Land for Rwy 06/24 RPZ	\$118,750	\$6,250	\$0	\$125,000
2018	Apron, Rehabilitate	Parking apron extg. Approx 2,000 sf.	\$61,750	\$3,250	\$0	\$65,000
2019	Runway MIRL/HIRL, Install	Design MIRLs for Rwy 06/24	\$52,250	\$2,750	\$0	\$55,000
Airport Total:			\$375,250	\$19,750	\$0	\$395,000
TUBA CITY - COCONINO						
2019	Runway MIRL/HIRL, Install	Replace Rwy lighting and signage, vault and service entrance	\$517,500	\$57,500	\$0	\$575,000
2020	Wind Cone, Install/Upgrade	Install Wind Cone and Segmented Circle for Rwy 15/33	\$135,000	\$15,000	\$0	\$150,000
Airport Total:			\$652,500	\$72,500	\$0	\$725,000

Airport Projects - by Airport

Airport Name - County

<i>FY</i>	<i>Project Component</i>	<i>Project Description</i>	<i>State Share</i>	<i>Local Share</i>	<i>Federal Share</i>	<i>Project Total</i>
WHITERIVER - NAVAJO						
2018	APMS - Taxiway Pavement Preservation	Crack Seal/Rubberized Asphalt Emulsion Seal Coat TWBWH 10	\$3,846	\$427	\$0	\$4,273
2018	APMS - Runway Pavement Preservation	Thin Asphalt Overlay/PFC RW119WH 10	\$677,615	\$75,291	\$0	\$752,906
2019	APMS - Taxiway Pavement Preservation	Thin Asphalt Overlay/PFC TWAWH 10	\$409,213	\$45,468	\$0	\$454,681
2020	APMS - Apron Pavement Preservation	Thin Asphalt Overlay/PFC A01WH 10	\$190,327	\$21,147	\$0	\$211,474
2020	APMS - Apron Pavement Preservation	Thin Asphalt Overlay/PFC A02WH 10	\$64,757	\$7,195	\$0	\$71,952
Airport Total:			\$1,345,758	\$149,528	\$0	\$1,495,286
WICKENBURG MUNI - MARICOPA						
2017	APMS - Runway Pavement Preservation	Crack Seal/Rubberized Asphalt Emulsion Seal Coat RW523WK 10	\$211,359	\$23,484	\$0	\$234,843
2017	Obstructions, Light/Mark/Remove (Safety Areas)	Removal of three hangars in the Rwy OFA.	\$63,000	\$7,000	\$0	\$70,000
Airport Total:			\$274,359	\$30,484	\$0	\$304,843
WINSLOW-LINDBERGH RGNL - NAVAJO						
2017	Airport Drainage, Improve	Design & Construct Drainage Improvements (airport wide)	\$675,000	\$75,000	\$0	\$750,000
Airport Total:			\$675,000	\$75,000	\$0	\$750,000
YUMA MCAS/YUMA INTL - YUMA						
2020	APMS - Taxiway Pavement Preservation	Crack Seal/Rubberized Asphalt Emulsion Seal Coat TWFYM 10	\$96,056	\$10,673	\$0	\$106,729
2020	APMS - Taxiway Pavement Preservation	Crack Seal/Rubberized Asphalt Emulsion Seal Coat TWZYM 30	\$68,031	\$7,559	\$0	\$75,590
Airport Total:			\$164,087	\$18,232	\$0	\$182,319
All Requested FSLs, All Funded SLs, APMS and State Projects:			\$81,404,411	\$9,559,024	\$0	\$90,963,435

This page is left intentionally blank.

Appendix A

ADOT Multimodal Planning Division - Aeronautics Group Sponsor Requested FAA Grant Funds for Airport Development Program Year 2017

Program/Fiscal Year	FY 2017	FY 2018	FY 2019	FY 2020	FY 2021
FAA Grant Portion of Request	\$ 116,737,761	\$ 115,455,298	\$ 156,874,047	\$ 267,753,151	\$ 162,864,149
Airport Sponsor Share	\$ 19,456,602	\$ 19,218,531	\$ 21,812,711	\$ 30,762,155	\$ 19,380,569
Total Requested Project Dollars	\$ 136,194,363	\$ 134,673,829	\$ 178,686,758	\$ 298,515,306	\$ 182,244,718

Detailed listing of all requests follows.

This page left intentionally blank

Appendix A

Airport Sponsor's Request for Funding PY 2017

Airport Name - County

<i>Fiscal Year</i>	<i>Funding Source</i>	<i>Requested Total</i>	<i>Project Description</i>	<i>Dist - State</i>	<i>Dist - Local</i>	<i>Dist - Federal</i>
AERONAUTICS - MARICOPA						
2017	FSL	\$823,635	Accomplish update to State Aviation System Plan (SASP).	\$36,816	\$36,817	\$750,002
2019	FSL	\$750,000	Accomplish update to 2016 APMS Triennial Study.	\$33,525	\$33,525	\$682,950
2019	FSL	\$800,000	Inventory land uses around System Airports, development of recommendations for the protection of the area around an airport.	\$35,760	\$35,760	\$728,480
Airport Total:				\$106,101	\$106,102	\$2,161,432
AK CHIN REGIONAL - PINAL						
2017	FSL	\$250,000	EA for Rwy 4/22 relocation	\$11,175	\$11,175	\$227,650
2019	FSL	\$320,000	Constr. Rwy 4/22 (75 ft x 4,674 ft) and extend Twy A (approx. 35 ft x 200 ft) to Rwy end (Design only)	\$14,304	\$14,304	\$291,392
2020	FSL	\$2,100,000	Constr. South End of Rwy 4/22 (75 ft x 4,674 ft) and extend Twy A (approx. 35 ft x 200 ft) to Rwy end (Constr. only)	\$93,870	\$93,870	\$1,912,260
Airport Total:				\$119,349	\$119,349	\$2,431,302
AVI SUQUILLA - LA PAZ						
2017	FSL	\$220,000	Design for Master Plan projects including GA Apron/Terminal area drainage, utility relocation/extension & road/parking rehabilitation, dedicate 3.0 acres of Tribal Trust Land for utility corridor and Road right-of way.	\$9,834	\$9,834	\$200,332
2019	FSL	\$1,250,000	Construct GA Terminal/Apron area drainage, relocate/install storm drainage, rehab 8,000 sy Access Road and 11,000 sy Public Parking. Drainage includes retention basin about 1,100 feet from terminal area.	\$55,875	\$55,875	\$1,138,250
2021	FSL	\$1,500,000	Design and construct mill and overlay of Central Portion of GA Terminal Apron AO1AS-20 (75) approximately 22,000 SY and reconstruct Northern Portion to new grades including connection to drainage improvements constructed in 2019	\$67,050	\$67,050	\$1,365,900
Airport Total:				\$132,759	\$132,759	\$2,704,482
BAGDAD - YAVAPAI						
2018	FSL	\$255,000	Construct taxiway turnarounds serving each end of runway 5/23	\$11,398	\$11,399	\$232,203
2018	FSL	\$582,000	Pav rehab of Rwy, Twy, and apron	\$26,015	\$26,016	\$529,969
2019	FSL	\$100,000	Automobile paved parking in terminal area	\$4,470	\$4,470	\$91,060
Airport Total:				\$41,883	\$41,885	\$853,232

Appendix A

Airport Sponsor's Request for Funding PY 2017

Airport Name - County

<i>Fiscal Year</i>	<i>Funding Source</i>	<i>Requested Total</i>	<i>Project Description</i>	<i>Dist - State</i>	<i>Dist - Local</i>	<i>Dist - Federal</i>
BENSON MUNI - COCHISE						
2018	FSL	\$600,000	Recon. access road (2,000 lf)	\$26,820	\$26,820	\$546,360
2021	FSL	\$350,000	Master Plan Update w/ Drainage Plan	\$15,645	\$15,645	\$318,710
Airport Total:				\$42,465	\$42,465	\$865,070
BISBEE DOUGLAS INTL - COCHISE						
2017	FSL	\$85,000	Recon. Twy A Ph.1 (A2-A3 approx. 1,100 ft x 35 ft) (Design Only)	\$3,800	\$3,799	\$77,401
2019	FSL	\$650,000	Recon. Twy A Ph.1 (A2-A3 approx. 1,100 ft x 35 ft) (Constr. Only)	\$29,055	\$29,055	\$591,890
Airport Total:				\$32,855	\$32,854	\$669,291
BISBEE MUNI - COCHISE						
2017	FSL	\$225,000	Install PAPIs on Rwy 35 (Constr. Only)	\$10,058	\$10,057	\$204,885
2019	FSL	\$1,360,000	Relocate Twy A (5,900 ft x 25 ft) to 225 ft from Rwy centerline - (Constr. Only) Ph 1 approx 2,050 ft from A1 to A3 w/ lighted hold signs on A4 through A6	\$60,792	\$60,792	\$1,238,416
Airport Total:				\$70,850	\$70,849	\$1,443,301
BUCKEYE MUNI - MARICOPA						
2017	FSL	\$300,000	Waterline infrastructure constr.	\$13,410	\$13,410	\$273,180
2017	FSL	\$500,000	Equipment/maintenance building (Constr. only)	\$22,350	\$22,350	\$455,300
2019	FSL	\$500,000	Update Master Plan and ALP	\$22,350	\$22,350	\$455,300
2020	FSL	\$950,000	Constr. RSAT project - airfield lighting and signage	\$42,465	\$42,465	\$865,070
2021	FSL	\$400,000	Constr. RSAT project - access control	\$17,880	\$17,880	\$364,240
Airport Total:				\$118,455	\$118,455	\$2,413,090
CASA GRANDE MUNI - PINAL						
2017	FSL	\$400,000	Constr. of 230 ft x 35 ft bypass Twys at both ends of Rwy 5/23.	\$17,880	\$17,880	\$364,240
2017	FSL	\$150,000	Update Airport Master Plan.	\$6,705	\$6,705	\$136,590
2017	FSL	\$240,000	Conduct an EA and purchase 7.72 +/- acres of land to relocate a section of the airport perimeter fence.	\$10,728	\$10,728	\$218,544
2017	FSL	\$180,000	Replace extg. connector Twy at Rwy midpoint with new 230 ft x 35 ft connector Twy. Demolish and remove old connector Twy.	\$8,046	\$8,046	\$163,908
2018	FSL	\$500,000	Expand terminal area parking lot (6,660 sy -- 150 ft x 400 ft), relocate 500 ft of security fencing and utilities (200 ft water/electric and one fire hydrant) (12-AIR-2904).	\$22,350	\$22,350	\$455,300
2018	FSL	\$860,000	Design 11,500 sy apron to 74,000 DWL, expansion of SW Apron (12-AIR-2896)	\$38,442	\$38,442	\$783,116
2018	FSL	\$320,000	Design/constr. AC wash Rack (70 ft x 70 ft) in West Apron area	\$14,304	\$14,304	\$291,392

Appendix A

Airport Sponsor's Request for Funding PY 2017

Airport Name - County		Fiscal Year	Funding Source	Requested Total	Project Description	Dist - State	Dist - Local	Dist - Federal
CASA GRANDE MUNI - PINAL								
2018	FSL	\$720,000	Relocate extg. drainage ditch running from NE to SW portions of airport at the end of Rwy 5 to allow for 3,200 ft Rwy extension. Relocation would require the constr. of a new 4,000 ft x 80 ft drainage ditch.	\$32,184	\$32,184	\$655,632		
2018	FSL	\$3,875,000	Complete an EA and purchase 193 acres of land required for planned Rwy extension; parallel Twy construction; Drainage ditch and ILS relocation (13-AIR-3002).	\$173,212	\$173,213	\$3,528,575		
2019	FSL	\$350,000	Constr. 3,200 ft x 50 ft extension of parallel Twy with a 74,000 DWL rating.	\$15,645	\$15,645	\$318,710		
2019	FSL	\$1,500,000	Constr. 3,200 ft x 100 ft (74,000 DWL) extension to Rwy 5/23.	\$67,050	\$67,050	\$1,365,900		
2019	FSL	\$1,409,000	Design/constr.(19,100 ft x 12 ft) permimeter service road (approx.14,000 ft) and security fence (13-AIR-2912).	\$62,982	\$62,983	\$1,283,035		
2019	FSL	\$1,200,000	Design and rehab. extg. Rwy 5/23 (5,280 ft x 100 ft), parallel Twy (5,280 ft x 50 ft), and north and west aprons (11,620 sy) (15-AIR-2931).	\$53,640	\$53,640	\$1,092,720		
2020	FSL	\$1,300,000	Relocate extg. MALSR & ILS (14-AIR-2914).	\$58,110	\$58,110	\$1,183,780		
2020	FSL	\$150,000	Design/constr. relocated segmented circle & lighted windsock north of Rwy 5/23	\$6,705	\$6,705	\$136,590		
2020	FSL	\$1,556,000	Design/constr. 16,500 sy north side apron (15-AIR-2915).	\$69,553	\$69,553	\$1,416,894		
2020	FSL	\$800,000	Design/constr. 2,000 ft x 30 ft access road (north side) & 6,000 sy parking lot (15-AIR-2917).	\$35,760	\$35,760	\$728,480		
2021	FSL	\$1,598,000	Design/constr. two high-speed & one right-angle Twy for Rwy 5/23 totaling 1,600 ft x 50 ft at 74,000 DWL	\$71,431	\$71,430	\$1,455,139		
2021	FSL	\$2,600,000	Design/constr. 4,700 ft x 35 ft lighted parallel Twy & connector Twys to serve shorter north side parallel Rwy 5/23	\$116,220	\$116,220	\$2,367,560		
2021	FSL	\$3,609,000	Design/constr. 3,880 ft x 75 ft VFR parallel Rwy for light AC 600 ft north of extg. Rwy 5/23	\$161,322	\$161,323	\$3,286,355		
Airport Total:				\$1,042,269	\$1,042,271	\$21,232,460		
CHANDLER MUNI - MARICOPA								
2017	FSL	\$471,000	Replace 6 receivers and 5 transmitters currently operating in ATCT and add 1 800 Mhz 16 channel transceiver.	\$21,054	\$21,053	\$428,893		
2017	FSL	\$304,000	Design and construct stormwater drainage improvements in West Airport Basin.	\$13,589	\$13,589	\$276,822		
2017	FSL	\$929,000	Design and Construct Rehabilitate. North Terminal Apron Phase 1 (27,000 sq yds)	\$41,526	\$41,527	\$845,947		
2018	FSL	\$1,438,000	Design and Construct Rehabilitate North Terminal Apron Phase 2 (47,600 sq yd)	\$64,279	\$64,278	\$1,309,443		
2018	FSL	\$350,000	Airport Master Plan Update and Airport Layout Plan	\$15,645	\$15,645	\$318,710		

Appendix A

Airport Sponsor's Request for Funding PY 2017

Airport Name - County

<i>Fiscal Year</i>	<i>Funding Source</i>	<i>Requested Total</i>	<i>Project Description</i>	<i>Dist - State</i>	<i>Dist - Local</i>	<i>Dist - Federal</i>
CHANDLER MUNI - MARICOPA						
2018	FSL	\$286,000	Environmental Assessment for planned Taxiway B extension from existing Taxiway N to approach end of Runway 4L including connectors	\$12,784	\$12,784	\$260,432
2019	FSL	\$3,251,000	Construct new North Apron (~540 ft. x 275 ft; ~16,450 sq. yds.)	\$145,320	\$145,319	\$2,960,361
2019	FSL	\$438,500	Design Taxiway B extension from Taxiway N to Taxiway D (~5,500 ft. x 40 ft.; ~24,500 sq. yds.) including grading, lighting and signs.	\$19,601	\$19,601	\$399,298
2020	FSL	\$2,925,000	Construct Phase I of Taxiway B extension (~2,800 ft. x 40 ft.) including new connectors and run-up areas (~17,000 sq. yds.) between existing Taxiways N and H	\$130,748	\$130,747	\$2,663,505
2021	FSL	\$2,488,000	Construct Phase II of Taxiway B extension (~2,300 ft. x 40 ft.) including new connectors and run-up areas (~15,000 sq. yds.) between existing Taxiways H and D.	\$111,214	\$111,213	\$2,265,573
Airport Total:				\$575,760	\$575,756	\$11,728,984
CHINLE MUNI - APACHE						
2021	FSL	\$3,600,000	Recon. Rwy 18/36 (6,902 ft x 75 ft) including MIRLS, signage, and vault replacement (Constr. Only)	\$160,920	\$160,920	\$3,278,160
Airport Total:				\$160,920	\$160,920	\$3,278,160
CIBECUE - NAVAJO						
2017	FSL	\$300,000	EA for new Airport	\$13,410	\$13,410	\$273,180
2018	FSL	\$6,500,000	Constr. Rwy 1/19 (5,100 ft x 75 ft) including Bypass Twys (840 ft x 35 ft) , Connector Twy (300 ft x 35 ft), Apron (15,584 sy) and Access Road (5,460 ft x 25 ft) - Phase I Grading & Drainage (Constr. Only)	\$290,550	\$290,550	\$5,918,900
2019	FSL	\$3,800,000	Constr. Rwy (5,100 ft x 75 ft) including Bypass Twys (840 ft x 35 ft), Connector Twy (300 ft x 35 ft), Apron (15,584 sy) and Access Road (5,460 ft x 25 ft) - Phase 2 Paving (Constr. Only)	\$169,860	\$169,860	\$3,460,280
2020	FSL	\$860,000	Install Rwy 1/19 Edge Lighting and Visual Aids including utilities - Phase 3 Lighting (Constr. Only)	\$38,442	\$38,442	\$783,116
Airport Total:				\$512,262	\$512,262	\$10,435,476
COCHISE COUNTY - COCHISE						
2017	FSL	\$85,000	Replace wind cone and segmented circle	\$3,800	\$3,799	\$77,401
2017	FSL	\$112,000	Replace rotating beacon and tower (with tip down tower)	\$5,006	\$5,007	\$101,987
2017	FSL	\$270,000	Install airfield edge lighting on Twy A north	\$12,069	\$12,069	\$245,862
2017	FSL	\$50,000	Install signage on Taxiway A north	\$2,235	\$2,235	\$45,530
2019	FSL	\$110,000	Rehab Apron Section 20 (18,300sy) (Design Only)	\$4,917	\$4,917	\$100,166
2020	FSL	\$1,350,000	Rehab Apron Section 20 (18,300 sy) (Construction Only)	\$60,345	\$60,345	\$1,229,310

Appendix A

Airport Sponsor's Request for Funding PY 2017

Airport Name - County

<i>Fiscal Year</i>	<i>Funding Source</i>	<i>Requested Total</i>	<i>Project Description</i>	<i>Dist - State</i>	<i>Dist - Local</i>	<i>Dist - Federal</i>
COCHISE COUNTY - COCHISE						
2021	FSL	\$300,000	Install AWOS II	\$13,410	\$13,410	\$273,180
Airport Total:				\$101,782	\$101,782	\$2,073,436
COLORADO CITY MUNI - MOHAVE						
2017	FSL	\$100,000	Crack Seal, Fog Seal and Remark Twy A (820 ft x 35 ft), Twy B (2,766 ft x 35 ft), Connecting Twys (2-245 ft x 35 ft, 3-191 ft x 35 ft), and Twy to Hangar. PCI=68	\$4,470	\$4,470	\$91,060
2019	FSL	\$500,000	Acquire approx. 124 acres of BLM & private land around the Rwys including Parcel 4, Parcel 5, Parcel 6, Parcel 7, Parcel 8, Parcel 9, Parcel 10, Parcel 11, Parcel 12, and Parcel 13.	\$22,350	\$22,350	\$455,300
2020	FSL	\$350,000	Prepare Airport Master Plan Update with Airport AGIS	\$15,645	\$15,645	\$318,710
Airport Total:				\$42,465	\$42,465	\$865,070
COOLIDGE MUNI - PINAL						
2017	FSL	\$1,250,000	Constr. Twy B4 approx. 75 ft x 425 ft, Twy B approx. 50 ft x 1,000 ft	\$55,875	\$55,875	\$1,138,250
2017	FSL	\$150,000	Design Twy B3 approx. 75 ft x 425 ft, Twy A3 approx. 35 ft x 450 ft, Twy A approx. 50 ft x 1500 ft	\$6,705	\$6,705	\$136,590
2018	FSL	\$1,500,000	Constr. Twy B3 approx. 75 ft x 425 ft, Twy A3 approx. 35 ft x 450 ft, Twy A approx. 50 ft x 1,500 ft	\$67,050	\$67,050	\$1,365,900
2018	FSL	\$250,000	Design Rwy 5-23 recon. approx. 150 ft x 5,580 ft	\$11,175	\$11,175	\$227,650
2018	FSL	\$850,000	Design/constr. Rwy 5-23 vertical/visual guidance system, PAPI/REIL, electrical vault upgrade and MIRLS	\$37,995	\$37,995	\$774,010
2019	FSL	\$640,000	Design and constr. security fencing, approx. 16,000 lf	\$28,608	\$28,608	\$582,784
2019	FSL	\$5,000,000	Recon. Rwy 5-23 (Approx. 150 ft x 5,560 ft) (Constr. only)	\$223,500	\$223,500	\$4,553,000
2019	FSL	\$200,000	Design/constr. Rwy 17-35 PAPI	\$8,940	\$8,940	\$182,120
2020	FSL	\$200,000	Master Plan Update including ALP Update	\$8,940	\$8,940	\$182,120
2021	FSL	\$1,000,000	Recon. apron.	\$44,700	\$44,700	\$910,600
Airport Total:				\$493,488	\$493,488	\$10,053,024
COTTONWOOD - YAVAPAI						
2017	FSL	\$1,600,000	Constr. apron rehab., Ph. 2 (approximately 24,100 SY)	\$71,520	\$71,520	\$1,456,960
2019	FSL	\$150,000	EA for Jet A Fuel Tank	\$6,705	\$6,705	\$136,590
2020	FSL	\$250,000	Design & Construct Jet A Fuel Tank	\$11,175	\$11,175	\$227,650
2021	FSL	\$70,000	Design Rwy 32 & Twy A Extension	\$3,129	\$3,129	\$63,742
Airport Total:				\$92,529	\$92,529	\$1,884,942

Appendix A

Airport Sponsor's Request for Funding PY 2017

Airport Name - County

<i>Fiscal Year</i>	<i>Funding Source</i>	<i>Requested Total</i>	<i>Project Description</i>	<i>Dist - State</i>	<i>Dist - Local</i>	<i>Dist - Federal</i>
ELOY MUNI - PINAL						
2017	FSL	\$350,000	Design the relocation of Twy A (17,000 sy) to meet or exceed current FAA design standards. The project also includes new MITLs.	\$15,645	\$15,645	\$318,710
2017	FSL	\$300,000	Prepare an EA for a 650 ft extension to Rwy 2, including land acquisition (approx. 40 acres). APN 404-05-009B	\$13,410	\$13,410	\$273,180
2018	FSL	\$2,500,000	Relocation of Twy A (17,000 sy) to meet or exceed current FAA design standards. The project also includes new MITLs.	\$111,750	\$111,750	\$2,276,500
2020	FSL	\$150,000	Design of a 650 ft. extension to Rwy 2, including parallel Twy extension, MIRLs and MITLs.	\$6,705	\$6,705	\$136,590
2020	FSL	\$400,000	Reimbursement for the acquisition of approx. 40 acres of land for the extension of Rwy 4 (APN 404-05-010J).	\$17,880	\$17,880	\$364,240
2021	FSL	\$1,500,000	Construct. of a 650 ft. Rwy extension to Rwy 2, including parallel Twy extension, MIRLs and MITLs	\$67,050	\$67,050	\$1,365,900
Airport Total:				\$232,440	\$232,440	\$4,735,120

ERNEST A. LOVE FIELD - YAVAPAI

2017	FSL	\$2,415,000	Constr. MIRL, signage upgrades and distance remaining signs for Rwy 3R/21L and 3L/21R.	\$60,375	\$60,375	\$2,294,250
2017	FSL	\$150,000	Snow removal equipment	\$3,750	\$3,750	\$142,500
2018	FSL	\$450,000	Design 12,000 sf ARFF facility mid-field south of Twy D.	\$11,250	\$11,250	\$427,500
2019	FSL	\$3,000,000	Constr. 12,000 sf ARFF facility mid-field south of Twy D.	\$75,000	\$75,000	\$2,850,000
2019	FSL	\$4,500,000	Construct 1st phase to realign/relocate parallel TWY C - offset to the north to provide adequate distance from Runway 3R-21L (6,800 ft x 50 ft). This phase includes the SW 3,400 ft of the TWY.	\$112,500	\$112,500	\$4,275,000
2020	FSL	\$4,500,000	Construct 2nd phase to realign/relocate parallel TWY C - offset to the north to provide adequate distance from Runway 3R-21L (6,800 ft x 50 ft). This phase includes the NE 3,400 ft of the TWY.	\$112,500	\$112,500	\$4,275,000
2021	FSL	\$2,700,000	Acquisition of 138 ac for Rwy 21L Extension to 10,570 ft (138 ac of APN 103-01-021G) and 8.4 ac for Rwy 12/30 RPZs APNs 102-04-001A, 102-03-008, 102-06-001 and 102-06-006.	\$67,500	\$67,500	\$2,565,000
Airport Total:				\$442,875	\$442,875	\$16,829,250

FALCON FLD - MARICOPA

2017	FSL	\$500,000	Design installation of safety area rock in Rwy and Twy safety areas.	\$22,350	\$22,350	\$455,300
2017	FSL	\$400,000	Update Airport Master Plan, ALP, and conduct initial AGIS.	\$17,880	\$17,880	\$364,240
2018	FSL	\$650,000	Constr. acute angle Twys for Rwy 4L/22R to Twy E.	\$29,055	\$29,055	\$591,890
2018	FSL	\$200,000	Conduct EA for the removal of orange grove trees.	\$8,940	\$8,940	\$182,120
2018	FSL	\$2,700,000	Install safety area rock in approach zones of Rwy 4R/22L & 4L/22R.	\$120,690	\$120,690	\$2,458,620
2019	FSL	\$1,200,000	Removal of orange grove trees from approach end of Rwy 4R & 4L.	\$53,640	\$53,640	\$1,092,720

Appendix A

Airport Sponsor's Request for Funding PY 2017

Airport Name - County

<i>Fiscal Year</i>	<i>Funding Source</i>	<i>Requested Total</i>	<i>Project Description</i>	<i>Dist - State</i>	<i>Dist - Local</i>	<i>Dist - Federal</i>
FALCON FLD - MARICOPA						
2019	FSL	\$3,500,000	Install RSA rock each side of Rwy 4L/22R & 4R/22L.	\$156,450	\$156,450	\$3,187,100
2020	FSL	\$300,000	Design eastside Twy (6,931 sy) from T-hangar area east.	\$13,410	\$13,410	\$273,180
2021	FSL	\$2,829,548	Constr. eastside Twy (6,931 sy) from T-hangar area east.	\$126,481	\$126,481	\$2,576,586
2021	FSL	\$182,370	Design Twy C run up area to provide additional capacity for Rwy 22L.	\$8,152	\$8,152	\$166,066
2021	FSL	\$300,000	Install AWOS to provide FFZ 24-hour weather reporting capabilities.	\$13,410	\$13,410	\$273,180
Airport Total:				\$570,458	\$570,458	\$11,621,002
FLAGSTAFF PULLIAM - COCONINO						
2017	FSL	\$3,300,000	Mill and overlay Rwy 3/21 (150 ft x 8,800 ft) including remarking.	\$147,510	\$147,510	\$3,004,980
2019	FSL	\$3,300,000	Construct parking lot to increase passenger parking capacity at the airport terminal	\$147,510	\$147,510	\$3,004,980
2020	FSL	\$1,100,000	EA for Land Acquisition and Grade and Pave Perimeter Road inside the perimeter fence	\$49,170	\$49,170	\$1,001,660
2021	FSL	\$1,100,000	Aquire Equipment-Snowplow with Sweeper Broom	\$49,170	\$49,170	\$1,001,660
Airport Total:				\$393,360	\$393,360	\$8,013,280
GILA BEND MUNI - MARICOPA						
2017	FSL	\$170,000	Purchase and install a new L.E.D. rotating beacon on extg. tower.	\$7,599	\$7,599	\$154,802
2017	FSL	\$170,000	Purchase and install a new LED rotating beacon on extg. tower.	\$7,599	\$7,599	\$154,802
2017	FSL	\$15,000	Acquire 5.7 acre easement for AWOS.	\$670	\$671	\$13,659
2017	FSL	\$200,000	Install new AWOS.	\$8,940	\$8,940	\$182,120
2018	FSL	\$100,000	Design and install REILs on both ends of Rwy 4/22	\$4,470	\$4,470	\$91,060
2019	FSL	\$187,000	Demolish Twys C & D. Constr. new Twy C at mid-point between Twys C & D, install MITLs, relocate signage, striping.	\$8,359	\$8,359	\$170,282
2020	FSL	\$412,500	Constr. two hold bays 160 ft x 95 ft (3,300 sy), modify MITLs and striping.	\$18,439	\$18,439	\$375,622
2021	FSL	\$500,000	Remove hill adjacent to Rwy to remove surface obstruction.	\$22,350	\$22,350	\$455,300
Airport Total:				\$78,426	\$78,427	\$1,597,647

Appendix A

Airport Sponsor's Request for Funding PY 2017

Airport Name - County

<i>Fiscal Year</i>	<i>Funding Source</i>	<i>Requested Total</i>	<i>Project Description</i>	<i>Dist - State</i>	<i>Dist - Local</i>	<i>Dist - Federal</i>
GLENDALE MUNI - MARICOPA						
2017	FSL	\$350,000	Update Part 150 Noise Compatibility Study and Noise Exposure Maps.	\$0	\$31,290	\$318,710
2017	FSL	\$4,292,950	Design & Constr. the Recon. of North Apron Ph. 1 (approximately 59,200 sy). This area is north of the terminal building and south of the North Hangar area.	\$0	\$383,790	\$3,909,160
2018	FSL	\$1,092,500	Design and constr. the rehab. - Mill & Overlay - of the North apron pavement Ph. 2 (approximately 54,000 sy). The pavement is in the North hangar area on the northwest side of the airport.	\$0	\$97,670	\$994,830
2019	FSL	\$2,990,000	Design and Construct the full reconstruction of the South Apron pavement Phase 1 (approximately 38,000 sy). This apron is south of the terminal and north of the south hangar area.	\$0	\$267,306	\$2,722,694
2020	FSL	\$1,949,250	Design and construct the rehabilitation - Mill & Overlay - of the South Apron pavement Ph. 2 (approximately 93,000 sy). The pavement is in the South Hangar area on the southwest side of the Airport.	\$0	\$174,263	\$1,774,987
2021	FSL	\$300,000	Conduct EA for the channelization of New River. The channel will be moved to obtain land for the airport.	\$0	\$26,820	\$273,180

Airport Total:	\$0	\$981,139	\$9,993,561
-----------------------	------------	------------------	--------------------

GRAND CANYON NATIONAL PARK - COCONINO

2017	FSL	\$3,000,000	Rehab. extg. 10,500 sf terminal and 2,000 sf garage/baggage area to meet ADA standards, and meet standards for TSA security screening, restrooms, secured lounge and baggage screening and handling.	\$134,100	\$134,100	\$2,731,800
2017	FSL	\$100,000	Obtain lighted X's for Rwy 3/21.	\$4,470	\$4,470	\$91,060
2017	FSL	\$600,000	Aquire two new snow plows.	\$26,820	\$26,820	\$546,360
2017	FSL	\$2,000,000	Conduct Wildlife Mitigation measures identified in the Wildlife Hazard Assessment. The corrective actions and determination should be completed per the assessment.	\$89,400	\$89,400	\$1,821,200
2018	FSL	\$150,000	Obtain a pull-behind friction measurement trailer	\$6,705	\$6,705	\$136,590
2018	FSL	\$3,000,000	Upgrade perimeter road on east and west side. Dimensions are 18,800 ft x 20 ft. The utility road along the west side of the runway safety area is included in this project.	\$134,100	\$134,100	\$2,731,800
2018	FSL	\$1,500,000	Design and Constr. 50 ft x 100 ft helipad south of the apron slightly north of the ARFF building.	\$67,050	\$67,050	\$1,365,900
2019	FSL	\$3,000,000	Install 37,000 lf of fencing on the exterior of the airport and eight gates. Currently the exterior of the airport is not fenced and entry to airport property is not controlled.	\$134,100	\$134,100	\$2,731,800
2019	FSL	\$800,000	Conduct EA on the various sources of water identified in the master plan.	\$35,760	\$35,760	\$728,480

Appendix A

Airport Sponsor's Request for Funding PY 2017

Airport Name - County

<i>Fiscal Year</i>	<i>Funding Source</i>	<i>Requested Total</i>	<i>Project Description</i>	<i>Dist - State</i>	<i>Dist - Local</i>	<i>Dist - Federal</i>
GRAND CANYON NATIONAL PARK - COCONINO						
2020	FSL	\$9,000,000	Conduct milling, overlay and re-grooving of Rwy 3/21 (8,999 ft x 150 ft). The current Rwy is not 150 ft wide as required, add width to make Rwy 152 ft wide for the whole length.	\$402,300	\$402,300	\$8,195,400
2020	FSL	\$4,000,000	Add 25 ft shoulders to the 8,999 ft Rwy 3/21 and all connectors of approx. 2500 ft. Correct drainage area in RSA.	\$178,800	\$178,800	\$3,642,400
2021	FSL	\$400,000	Acquire deicing equipment to service AC up to and including MD80, 737 and 767.	\$17,880	\$17,880	\$364,240
2021	FSL	\$400,000	Acquire a new snow blower.	\$17,880	\$17,880	\$364,240
Airport Total:				\$1,249,365	\$1,249,365	\$25,451,270
GRAND CANYON WEST - MOHAVE						
2017	FSL	\$100,000	ARFF and maintenance facility (Design only)	\$4,470	\$4,470	\$91,060
2017	FSL	\$900,000	Drainage improvements on NE portion of airport.	\$40,230	\$40,230	\$819,540
2018	FSL	\$600,000	New terminal EA/EIS	\$26,820	\$26,820	\$546,360
2018	FSL	\$1,275,000	ARFF and maintenance facility (Constr. only)	\$56,993	\$56,993	\$1,161,015
2019	FSL	\$1,275,000	Heliport and helicopter parking.	\$56,993	\$56,993	\$1,161,015
2021	FSL	\$1,000,000	New terminal (Design only)	\$44,700	\$44,700	\$910,600
Airport Total:				\$230,206	\$230,206	\$4,689,590
H.A. CLARK MEMORIAL FIELD - COCONINO						
2020	FSL	\$500,000	Acquire approx. 101 acres of land future development. Parcel numbers are not available due to federal ownership.	\$22,350	\$22,350	\$455,300
Airport Total:				\$22,350	\$22,350	\$455,300
HOLBROOK MUNI - NAVAJO						
2017	FSL	\$435,000	Relocate Fuel Farm adjacent to Access Road (Design & Constr)	\$19,444	\$19,445	\$396,111
2017	FSL	\$300,000	Crack Seal, Fog Seal, Remark Rwy 3/21 (6,698 ft x 75 ft)	\$13,410	\$13,410	\$273,180
2020	FSL	\$350,000	Recon. Rwy 3/21 (6,698 ft x 75 ft) (Design Only)	\$15,645	\$15,645	\$318,710
2021	FSL	\$3,900,000	Reconstruct Rwy 3/21 (6,698 ft x 75 ft) Phase 1 (Constr. Only)	\$174,330	\$174,330	\$3,551,340
Airport Total:				\$222,829	\$222,830	\$4,539,341

Appendix A

Airport Sponsor's Request for Funding PY 2017

Airport Name - County

Fiscal Year	Funding Source	Requested Total	Project Description	Dist - State	Dist - Local	Dist - Federal
----------------	-------------------	--------------------	---------------------	--------------	--------------	----------------

KAYENTA - NAVAJO

2017	FSL	\$200,000	Acquire SRE	\$8,940	\$8,940	\$182,120
2018	FSL	\$150,000	Crack Seal, Fog Seal, Remark Easterly Apron (9,700 Sy) & bypass twy (5,000 Sy) to Rwy 23	\$6,705	\$6,705	\$136,590
2020	FSL	\$420,000	Rehab. Access Road	\$18,774	\$18,774	\$382,452
Airport Total:				\$34,419	\$34,419	\$701,162

KINGMAN - MOHAVE

2017	FSL	\$300,000	Update ALP with Narrative, conduct initial AGIS.	\$7,500	\$7,500	\$285,000
2017	FSL	\$7,500	CatEx for Twy B recon. (approx. 2,200 ft x 75 ft)	\$188	\$187	\$7,125
2019	FSL	\$2,300,000	Constr. dross site ACP overlay (approx. 90,000 sy)	\$57,500	\$57,500	\$2,185,000
2020	FSL	\$2,500,000	Constr. Twy B recon. (approx. 2,200 ft x 75 ft)	\$62,500	\$62,500	\$2,375,000
2021	FSL	\$150,000	EA for corner apron (approx. 34,000 sy)	\$3,750	\$3,750	\$142,500
Airport Total:				\$131,438	\$131,437	\$4,994,625

LAKE HAVASU CITY - MOHAVE

2017	FSL	\$150,000	Design & constr. replacement of extg. WPPA mountain & transmission line obstruction lights	\$6,705	\$6,705	\$136,590
2018	FSL	\$500,000	Master Plan Update, Sustainability & Business Plans, Rotorcraft Takeoff Plan	\$22,350	\$22,350	\$455,300
2019	FSL	\$100,000	Design & constr. airfield hazard markings	\$4,470	\$4,470	\$91,060
2019	FSL	\$120,000	Design & constr. replacement of distance remaining signs	\$5,364	\$5,364	\$109,272
2020	FSL	\$100,000	Design & constr. north ramp Twy connectors (approx. 29,160 sf)	\$4,470	\$4,470	\$91,060
2020	FSL	\$400,000	Design & constr. Pave Pres of Twys A & B (approx. 95,000 sy)	\$17,880	\$17,880	\$364,240
2021	FSL	\$400,000	Design & constr. helicopter & large AC parking areas (approx. 60,000 sf)	\$17,880	\$17,880	\$364,240
Airport Total:				\$79,119	\$79,119	\$1,611,762

LAUGHLIN/BULLHEAD INTL - MOHAVE

2017	FSL	\$3,000,000	Rehab. approx. 76,500 sy of the GA apron located south and west of the FBO. Ph. 3.	\$134,100	\$134,100	\$2,731,800
2017	FSL	\$500,000	Joint/crack seal the commercial apron in front of the terminal building (approx. 40,000 lf).	\$22,350	\$22,350	\$455,300
2018	FSL	\$500,000	EA for the constr. of a new terminal building, Apron, Twys, auto parking, and access road at the southeast corner of the airport.	\$22,350	\$22,350	\$455,300
2018	FSL	\$2,180,000	Reimbursement for the acquisition of approx. 218 acres of ASLD property. The APN is 213-32-003.	\$97,446	\$97,446	\$1,985,108
2019	FSL	\$400,000	Update Airport Master Plan and ALP	\$17,880	\$17,880	\$364,240

Appendix A

Airport Sponsor's Request for Funding PY 2017

Airport Name - County

<i>Fiscal Year</i>	<i>Funding Source</i>	<i>Requested Total</i>	<i>Project Description</i>	<i>Dist - State</i>	<i>Dist - Local</i>	<i>Dist - Federal</i>
LAUGHLIN/BULLHEAD INTL - MOHAVE						
2019	FSL	\$2,000,000	Recon. approx. 12,000 sy of the airline/RON apron located south and west of the terminal building.	\$89,400	\$89,400	\$1,821,200
2019	FSL	\$2,500,000	Installation of 25,000 lf of fence skirting to prevent wildlife from entering the airport.	\$111,750	\$111,750	\$2,276,500
2020	FSL	\$1,000,000	New terminal area - Site preparation, grading, drainage, utilities (Design only)	\$44,700	\$44,700	\$910,600
2021	FSL	\$5,000,000	New terminal area - Site preparation, grading, drainage, utilities (Constr. Only).	\$223,500	\$223,500	\$4,553,000
Airport Total:				\$763,476	\$763,476	\$15,553,048

MARANA RGNL - PIMA

2017	FSL	\$30,000	Design reconstruction of 1600 ft of Twy B between Twy B2 & Twy A.	\$1,341	\$1,341	\$27,318
2017	FSL	\$670,000	Design reconstruction terminal aprons, open tie-down/transient, west hangar, and west helicopter.	\$29,949	\$29,949	\$610,102
2018	FSL	\$300,000	EA for new public use terminal (16,000 sf).	\$13,410	\$13,410	\$273,180
2018	FSL	\$7,000,000	Recon. 1600 ft of Twy B between Twy B2 & Twy A, terminal aprons, open tie-down/transient, west hangar, and west helicopter. (Extg. aprons: terminal 777,000 sf, open tie-down 166,579 sf, transient 446,314 sf, hangar 334,000 sf, helicopter 134,000 sf)	\$312,900	\$312,900	\$6,374,200
2018	FSL	\$130,000	Replacement of the current PAPIs on both the main and crosswind Rwy.	\$5,811	\$5,811	\$118,378
2018	FSL	\$900,000	Design and constr. of the Rwy and Twys LED lighting and regulator electrical upgrades.	\$40,230	\$40,230	\$819,540
2018	FSL	\$350,000	EA Rwy 12/30 and Twy A & E extension. Rwy. 12/30 and Twy A & E to be extended by 300 ft.	\$15,645	\$15,645	\$318,710
2018	FSL	\$200,000	EA for Twy C recon. (50 ft x 2,000 ft) and the installation of MITLs.	\$8,940	\$8,940	\$182,120
2018	FSL	\$150,000	Design for various drainage projects throughout the airport to address drainage issues identified in the 2007 Airport Drainage Study.	\$6,705	\$6,705	\$136,590
2019	FSL	\$1,500,000	Constr. various drainage projects throughout the airport to address drainage issues identified in the 2007 Airport Drainage Study.	\$67,050	\$67,050	\$1,365,900
2019	FSL	\$300,000	EA for the acquisition of 201 acres: approx. 155 acres of land located within the RPZ for Rwy 12 & 30 and approx. 46 acres located within the RPZ for Rwy 3 & 21.	\$13,410	\$13,410	\$273,180
2019	FSL	\$200,000	Design recon. of Twy C (50 ft x 2,000 ft) and the installation of MITLs.	\$8,940	\$8,940	\$182,120
2019	FSL	\$300,000	Revalidation of the 2006 EA for the new ATCT.	\$13,410	\$13,410	\$273,180
2020	FSL	\$300,000	EA Rwy 3/21 and Twy B extension. Rwy 3/21 and Twy B will be extended by 800 ft.	\$13,410	\$13,410	\$273,180
2020	FSL	\$350,000	Design Rwy 12/30 and Twy A & E extension. This project will extend the approach end of Rwy 30 approx. 300 ft. The Rwy width will stay the same at 100 ft.	\$15,645	\$15,645	\$318,710

Appendix A

Airport Sponsor's Request for Funding PY 2017

Airport Name - County

<i>Fiscal Year</i>	<i>Funding Source</i>	<i>Requested Total</i>	<i>Project Description</i>	<i>Dist - State</i>	<i>Dist - Local</i>	<i>Dist - Federal</i>
MARANA RGNL - PIMA						
2020	FSL	\$700,000	Design terminal building (16,000 sf). Complete design and engineering for terminal building -- 100% constr. documents. The terminal will be sited on the eastern end of the airport parallel to Twy E.	\$31,290	\$31,290	\$637,420
2020	FSL	\$1,125,000	Recon. Twy C (50 ft x 2,000 ft) and install new MITLs.	\$50,288	\$50,287	\$1,024,425
2021	FSL	\$1,500,000	Constr. waterline, 6,000 lf at 12 in., from north portion of airport looping from northeast to northwest around Rwy 12/30 to extg. well.	\$67,050	\$67,050	\$1,365,900
2021	FSL	\$300,000	Update Part 150 Noise Study	\$13,410	\$13,410	\$273,180
2021	FSL	\$5,100,000	Acquire Land - 201 acres. Purchase approx. 155 acres of land located within the RPZ for Rwy 12 & 30 and approx. 46 acres located within the RPZ for Rwy 3 & 21.	\$227,970	\$227,970	\$4,644,060
2021	FSL	\$5,500,000	Constr. Rwy 12/30 and Twy A & E extension - The project will extend the approach end of Rwy 30 approx. 300 ft. The Rwy width will stay the same at 100 ft.	\$245,850	\$245,850	\$5,008,300
2021	FSL	\$7,000,000	Constr. a new public use terminal on east side of airport - 16,000 sf - This terminal will include space for an FBO, pilot facilities, public meeting rooms, and airport administration offices.	\$312,900	\$312,900	\$6,374,200
Airport Total:				\$1,515,554	\$1,515,553	\$30,873,893
NOGALES INTL - SANTA CRUZ						
2017	FSL	\$150,000	Rehab. Twy Connectors, Main Apron & Heliport Twy (Design) (approx. 3,200 lf)	\$6,705	\$6,705	\$136,590
2018	FSL	\$155,000	Fuel Facility Tank Replacement (includes relocation) (Design)	\$6,928	\$6,929	\$141,143
2018	FSL	\$1,200,000	Rehab. Twy Connectors, main Apron & Heliport Twy (Constr.) (approx. 3,200 lf)	\$53,640	\$53,640	\$1,092,720
2020	FSL	\$115,000	Rehab. MIRLs for Rwy 3-21 (Constr.)	\$5,140	\$5,141	\$104,719
2020	FSL	\$652,000	Improve Fuel Facility Tank Replacements (includes relocation) (Constr.)	\$29,144	\$29,145	\$593,711
2020	FSL	\$145,000	Install REILs for Runway 3-21 (Constr.)	\$6,482	\$6,481	\$132,037
2021	FSL	\$141,000	EA for future perimeter service road	\$6,303	\$6,302	\$128,395
Airport Total:				\$114,342	\$114,343	\$2,329,315

Appendix A

Airport Sponsor's Request for Funding PY 2017

Airport Name - County

<i>Fiscal Year</i>	<i>Funding Source</i>	<i>Requested Total</i>	<i>Project Description</i>	<i>Dist - State</i>	<i>Dist - Local</i>	<i>Dist - Federal</i>
PAGE MUNI - COCONINO						
2017	FSL	\$500,000	Constr. Twy C (approximately 1140 ft x 35 ft)	\$22,350	\$22,350	\$455,300
2017	FSL	\$500,000	Update Master Plan and ALP	\$22,350	\$22,350	\$455,300
2018	FSL	\$2,000,000	Constr. Apron rehab., Ph I (approximately 30,000 SY)	\$89,400	\$89,400	\$1,821,200
2019	FSL	\$2,000,000	Constr. Apron rehab. Ph. 2 (approximately 30,000 SY)	\$89,400	\$89,400	\$1,821,200
2020	FSL	\$80,000	Design northwest taxilane (approximately 1000 ft x 35 ft)	\$3,576	\$3,576	\$72,848
2021	FSL	\$500,000	Construct northwest taxilane (approximately 1000 ft x 35 ft)	\$22,350	\$22,350	\$455,300
Airport Total:				\$249,426	\$249,426	\$5,081,148

PAYSON - GILA

2018	FSL	\$300,000	Constr. Bypass Twy on RWY 24 (Approx. 35ft x 150ft) w/ edge lighting	\$13,410	\$13,410	\$273,180
2018	FSL	\$550,000	Install Twy edge lighting, standard airfield signage, noise abatement signs, and density altitude signs.	\$24,585	\$24,585	\$500,830
2020	FSL	\$400,000	Constr. an SRE building (30 ft x 40 ft)	\$17,880	\$17,880	\$364,240
2021	FSL	\$195,000	Acquire a SRE truck with plow and truck mounted sweeper	\$8,716	\$8,717	\$177,567
Airport Total:				\$64,591	\$64,592	\$1,315,817

PHOENIX DEER VALLEY - MARICOPA

2017	FSL	\$2,510,000	Constr. AC run-up area at the ends of Rwy 7R/25L. Each area is approx. 13,500 sy for a total of 27,000 sy.	\$112,197	\$112,197	\$2,285,606
2018	FSL	\$578,000	Constr new partial-length parallel Twy D (between C3 and C11)	\$25,837	\$25,836	\$526,327
2019	FSL	\$5,300,000	Relocate Twy B to the south (approx. 4.500 ft x 35 ft)	\$236,910	\$236,910	\$4,826,180
2020	FSL	\$1,500,000	Constr. acute angle Twy connectors B6 and B8. Relocate guard lights.	\$67,050	\$67,050	\$1,365,900
2021	FSL	\$1,775,000	Rehab. Rwy 7R/25L (approx. 8,200 ft x 100 ft)	\$79,342	\$79,343	\$1,616,315
Airport Total:				\$521,336	\$521,336	\$10,620,328

PHOENIX GOODYEAR - MARICOPA

2017	FSL	\$1,900,000	Rehab. Apron Pavement - Ph. II (approx. 41,000 wy of ACP)	\$84,930	\$84,930	\$1,730,140
2017	FSL	\$3,600,000	Design and constr. west parallel Twy B and exits. Twy will be 8,500 ft x 75 ft. Ph. I (NEPA and design)	\$160,920	\$160,920	\$3,278,160
2018	FSL	\$4,650,000	Rehab. apron pavement - Ph. I (approx. 28,000 sy of ACP)	\$207,855	\$207,855	\$4,234,290
2019	FSL	\$4,650,000	Rehab. apron pavement - Ph. II (approx. 28,000 sy of PCC)	\$207,855	\$207,855	\$4,234,290
2019	FSL	\$3,600,000	Constr. west parallel Twy B and exits. Twy will be 8,500 ft x 75 ft. Ph. II	\$160,920	\$160,920	\$3,278,160
2020	FSL	\$4,650,000	Rehab. apron pavement - Ph. III (approx. 28,000 sy of ACP)	\$207,855	\$207,855	\$4,234,290

Appendix A

Airport Sponsor's Request for Funding PY 2017

Airport Name - County

<i>Fiscal Year</i>	<i>Funding Source</i>	<i>Requested Total</i>	<i>Project Description</i>	<i>Dist - State</i>	<i>Dist - Local</i>	<i>Dist - Federal</i>
PHOENIX GOODYEAR - MARICOPA						
2020	FSL	\$5,600,000	Constr. west parallel Twy B and exits. Twy will be 8,500 ft x 75 ft. Ph. III	\$250,320	\$250,320	\$5,099,360
2021	FSL	\$3,900,000	Design and constr. new apron on the west side of the airport to accommodate new development areas and support Twy B	\$174,330	\$174,330	\$3,551,340
2021	FSL	\$3,500,000	Constr. west parallel Twy B and exits. Twy will be 8,500 ft x 75 ft. Ph. IV	\$156,450	\$156,450	\$3,187,100
2021	FSL	\$2,995,000	Strengthen Twy A to be compliant with the ARC D4 standards (approx. 6,000 ft x 75 ft).	\$133,876	\$133,877	\$2,727,247
Airport Total:				\$1,745,311	\$1,745,312	\$35,554,377

PHOENIX SKY HARBOR INTL - MARICOPA

2017	FSL	\$13,000,000	Remove and replace damaged concrete panels on Rwy 8-26 (approx. 4,000 ft x 80 ft). Work may include lighting, electrical work, drainage, and conduits. FAA runway status light system may need to be replaced.	\$1,625,000	\$1,625,000	\$9,750,000
2017	FSL	\$12,042,000	Recon. Terminal 4 apron - Ph. IV (approx. 48,000 sy)	\$1,505,250	\$1,505,250	\$9,031,500
2017	FSL	\$5,875,000	Update Airport Master Plan	\$734,375	\$734,375	\$4,406,250
2017	FSL	\$5,000,000	Various energy efficiency projects	\$625,000	\$625,000	\$3,750,000
2017	FSL	\$5,154,000	Recon. west air cargo apron (approx. 67,830 sy)	\$644,250	\$644,250	\$3,865,500
2017	FSL	\$5,000,000	Recon. Twy connector F8 (approx. 2,000 sy)	\$625,000	\$625,000	\$3,750,000
2018	FSL	\$5,588,000	Recon. T3 south transition apron (apron east of T3 south concourse, approx. 20,000 sy)	\$698,500	\$698,500	\$4,191,000
2018	FSL	\$5,000,000	Various energy efficiency projects	\$625,000	\$625,000	\$3,750,000
2018	FSL	\$360,000	Inspect airfield pavement surfaces, provide report of current conditions, and provide pavement management program for the area inspected.	\$45,000	\$45,000	\$270,000
2018	FSL	\$15,000,000	Constr. new crossfield Twy V - Ph. I	\$1,875,000	\$1,875,000	\$11,250,000
2018	FSL	\$1,500,000	Conduct FAR Part 150 Study	\$187,500	\$187,500	\$1,125,000
2018	FSL	\$6,100,000	Constr. T4 S1 Apron (approx. 57,300 sy)	\$762,500	\$762,500	\$4,575,000
2018	FSL	\$12,042,000	Recon. Terminal 4 apron - Ph. V (approx. 48,000 sy)	\$1,505,250	\$1,505,250	\$9,031,500
2019	FSL	\$5,000,000	Various energy efficiency projects	\$625,000	\$625,000	\$3,750,000
2019	FSL	\$5,500,000	Recon. T3 N apron (approx. 31,600 sy)	\$687,500	\$687,500	\$4,125,000
2019	FSL	\$13,342,000	Constr. south air cargo apron (approx. 52,000 sy)	\$1,667,750	\$1,667,750	\$10,006,500
2019	FSL	\$15,000,000	Constr. new crossfield Twy V - Ph. II	\$1,875,000	\$1,875,000	\$11,250,000
2020	FSL	\$2,127,000	Recon. Terminal 2 apron (extg. concourse building envelope is 9,250 sy)	\$265,875	\$265,875	\$1,595,250
2020	FSL	\$5,000,000	Recon. northwest apron (north of Twy A between A3 and A4, approx. 40,000 sy)	\$625,000	\$625,000	\$3,750,000

Appendix A

Airport Sponsor's Request for Funding PY 2017

Airport Name - County

<i>Fiscal Year</i>	<i>Funding Source</i>	<i>Requested Total</i>	<i>Project Description</i>	<i>Dist - State</i>	<i>Dist - Local</i>	<i>Dist - Federal</i>
PHOENIX SKY HARBOR INTL - MARICOPA						
2020	FSL	\$5,000,000	Various energy efficiency projects	\$625,000	\$625,000	\$3,750,000
2020	FSL	\$15,000,000	Constr. new crossfield Twy V - Ph. III	\$1,875,000	\$1,875,000	\$11,250,000
2021	FSL	\$15,000,000	Const. new crossfield Twy V - Ph. IV	\$1,875,000	\$1,875,000	\$11,250,000
2021	FSL	\$5,000,000	Various energy efficiency projects	\$625,000	\$625,000	\$3,750,000
Airport Total:				\$22,203,750	\$22,203,750	\$133,222,500

PHOENIX-MESA GATEWAY - MARICOPA

2017	FSL	\$8,400,000	Constr. Twy C Extension Ph. 3 from Twys L to P (approx. 4,100 ft x 75 ft with 35 ft Twy shoulders) including lighting, drainage, signage and marking.	\$375,480	\$375,480	\$7,649,040
2018	FSL	\$3,250,700	Recon. Twy A between Twys N & L; approx. 2,100 ft x 75 ft with 35 ft twy shoulders. Includes lighting, drainage, signage and markings.	\$145,306	\$145,307	\$2,960,087
2018	FSL	\$4,700,000	Design up to constr. documents, east side Terminal infrastructure including utilities, roadways, drainage, lighting and signage.	\$210,090	\$210,090	\$4,279,820
2019	FSL	\$5,000,000	Expansion Ph. 3 (approx. 240,000 SF) of AC parking apron, including lighting, marking, signage, electrical connections and drainage improvements.	\$223,500	\$223,500	\$4,553,000
2019	FSL	\$3,625,000	Design/constr. Ph. 1 & 2 of AC runup area to accommodate ADG III AC for engine maintenance runs. Area is 260 ft x 390 ft, may include jet blast fence or other safety and sound-suppression measures.	\$162,038	\$162,037	\$3,300,925
2019	FSL	\$4,000,000	Twy L Extension Ph. 3 between 30L & 30C -- 75 ft x 1,500 ft (12,500 sy PCC), plus shoulders -- 35 ft x 1,500 lf (12,000 sy ACP) including drainage and lighting.	\$178,800	\$178,800	\$3,642,400
2019	FSL	\$34,000,000	Constr. East Side Terminal Area infrastructure per AMP. Project includes site work, infrastructure, and roadways.	\$1,519,800	\$1,519,800	\$30,960,400
2020	FSL	\$174,000,000	Design/const. the east side Terminal Building Ph. 1. Approx. size of Ph. 1 Terminal passenger space is 300,000 SF and includes AC gates, ticketing/check-in, baggage claim, security screening, concession space and circulation.	\$7,777,800	\$7,777,800	\$158,444,400
2020	FSL	\$25,000,000	Constr. East side Terminal Apron, approx. 1 million sf. Includes lighting, drainage, signage and markings.	\$1,117,500	\$1,117,500	\$22,765,000
2020	FSL	\$1,107,776	Design/recon. Twy H between Twy B and Rwy 12R -- approx. 400 ft x 75 ft (3,500 sy PCC), plus 400 lf x 35 ft shoulders (3,000 sy ACP), including lighting, drainage, signage, and marking.	\$49,518	\$49,517	\$1,008,741
2021	FSL	\$3,500,000	North GA Apron Pavement Recon. Ph. 3, area approx. 927 ft x 313 ft (32,087 SY of PCC).	\$156,450	\$156,450	\$3,187,100
Airport Total:				\$11,916,282	\$11,916,281	\$242,750,913

Appendix A

Airport Sponsor's Request for Funding PY 2017

Airport Name - County

<i>Fiscal Year</i>	<i>Funding Source</i>	<i>Requested Total</i>	<i>Project Description</i>	<i>Dist - State</i>	<i>Dist - Local</i>	<i>Dist - Federal</i>
PINAL AIRPARK - PINAL						
2018	FSL	\$2,200,000	Recon. of the paved shoulders along Rwy 12/30 to fix pavement and grading deficiencies. MIRLs will also be replaced with new fixtures to improve visibility at the Airport.	\$98,340	\$98,340	\$2,003,320
Airport Total:				\$98,340	\$98,340	\$2,003,320
POLACCA - NAVAJO						
2017	FSL	\$125,000	ALP w/ Narrative	\$5,587	\$5,587	\$113,825
2018	FSL	\$245,000	Recon. Rwy 4/22 (4,200 ft x 60 ft) (Design Only)	\$10,951	\$10,952	\$223,097
2019	FSL	\$1,550,000	Recon. Rwy 4/22 (4,200 ft x 60 ft) (Construct)	\$69,284	\$69,285	\$1,411,431
2021	FSL	\$385,000	Constr. SRE Building (40 ft x 50 ft)	\$17,210	\$17,210	\$350,581
Airport Total:				\$103,032	\$103,034	\$2,098,934
RYAN FIELD - PIMA						
2017	FSL	\$220,000	Replace AWOS.	\$9,834	\$9,834	\$200,332
2018	FSL	\$141,600	Mill and overlay Aviator Lane (approximately 43,700 sf). Project includes pavement markings.	\$6,330	\$6,329	\$128,941
2018	FSL	\$118,219	Recon. Aviator Lane parking lots (approximately 28,350 sf). Project includes restriping and markings.	\$5,284	\$5,285	\$107,650
2020	FSL	\$236,960	Constr. Airside Service Road and parking in front of wash rack and along the southern edge of the tower apron. Project includes pavement markings and signage.	\$10,592	\$10,592	\$215,776
2020	FSL	\$4,096,820	Ph.1 constr. of a portion of the new East apron for AC parking (approximately 44,700 sy) at the end of East Access Road.	\$183,128	\$183,128	\$3,730,564
2021	FSL	\$6,451,900	Ph. 2 constr. Of a portion of the new East apron for aircraft parking (approximately 17,600 sy) at the end of East Access Road.	\$288,400	\$288,400	\$5,875,100
Airport Total:				\$503,568	\$503,568	\$10,258,363
SAFFORD RGNL - GRAHAM						
2018	FSL	\$142,000	Improve Fireline System for Airport. Design is requested due to safety concerns & requires upgrading the line & adding a well pump system to provide the necessary pressure for water distribution.	\$6,347	\$6,348	\$129,305
2019	FSL	\$1,120,000	Improve Fireline System for Airport. Design is requested due to safety concerns & requires upgrading the line & adding a well pump system in order to provide the necessary pressure for water distribution.	\$50,064	\$50,064	\$1,019,872
2020	FSL	\$500,000	Update Airport Master Plan	\$22,350	\$22,350	\$455,300
2021	FSL	\$2,800,000	Recon. Rwy 8/26 (Constr.)	\$125,160	\$125,160	\$2,549,680

Appendix A

Airport Sponsor's Request for Funding PY 2017

Airport Name - County

<i>Fiscal Year</i>	<i>Funding Source</i>	<i>Requested Total</i>	<i>Project Description</i>	<i>Dist - State</i>	<i>Dist - Local</i>	<i>Dist - Federal</i>
------------------------	---------------------------	----------------------------	----------------------------	---------------------	---------------------	-----------------------

SAFFORD RGNL - GRAHAM

Airport Total:	\$203,921	\$203,922	\$4,154,157
-----------------------	------------------	------------------	--------------------

SAN CARLOS APACHE - GILA

2017	FSL	\$108,000	Replace Rwy signage and install supplemental wind cone for Rwy 27	\$4,828	\$4,828	\$98,345
2018	FSL	\$130,000	Install area lighting adjacent to apron	\$5,811	\$5,811	\$118,378
2020	FSL	\$830,000	Install lighting and signage on Twys A, A1, A2, A3, A4, A5 and A6	\$37,101	\$37,101	\$755,798
2021	FSL	\$100,000	Drainage Study	\$4,470	\$4,470	\$91,060

Airport Total:	\$52,210	\$52,210	\$1,063,581
-----------------------	-----------------	-----------------	--------------------

SAN MANUEL - PINAL

2017	FSL	\$200,000	Property currently leased by the airport from BHP. Need to acquire to fully comply with grant assurances, approx. 161 acres of land.	\$8,940	\$8,940	\$182,120
2017	FSL	\$150,000	Numerous improvements have been made to the airport since the last airport drainage master plan (1997)	\$6,705	\$6,705	\$136,590
2018	FSL	\$450,000	Following the completion of an EA, approx. 161 acres of land will be acquired by the airport.	\$20,115	\$20,115	\$409,770
2020	FSL	\$685,000	Additional apron space will be designed and constr. to allow for two 5-unit T-hangar structures to be constr. This expansion is necessary to provide additional hangar space for AC owners on waiting list.	\$30,620	\$30,619	\$623,761

Airport Total:	\$66,380	\$66,379	\$1,352,241
-----------------------	-----------------	-----------------	--------------------

SCOTTSDALE - MARICOPA

2017	FSL	\$7,300,000	Rehabilitate 97,900 sy - 8,250 x 100 ft. The project also includes improving Rwy shoulders, blast pads, new MIRL, and signage.	\$326,310	\$326,310	\$6,647,380
2018	FSL	\$2,000,000	Installation of Guard Lights on 11 twy connectors.	\$89,400	\$89,400	\$1,821,200
2018	FSL	\$3,800,000	Recon. the Delta Apron (approx. 480 ft x 350 ft), 22,225 sy, located on the west side of the airfield at the south end of the airport.	\$169,860	\$169,860	\$3,460,280
2019	FSL	\$200,000	Preparation of an EA for the acquisition of approx. 4.0 acres of land for airport development. APN: 215-56-089A,090A,091A,092A, and 093A.	\$8,940	\$8,940	\$182,120
2021	FSL	\$9,500,000	Acquisition of approx. 4.0 acres of land for airport development. APN: 215-56-089A,090A,091A,092A, and 093A.	\$424,650	\$424,650	\$8,650,700

Airport Total:	\$1,019,160	\$1,019,160	\$20,761,680
-----------------------	--------------------	--------------------	---------------------

Appendix A

Airport Sponsor's Request for Funding PY 2017

Airport Name - County

<i>Fiscal Year</i>	<i>Funding Source</i>	<i>Requested Total</i>	<i>Project Description</i>	<i>Dist - State</i>	<i>Dist - Local</i>	<i>Dist - Federal</i>
SEDONA - YAVAPAI						
2017	FSL	\$700,000	Design and constr. RSA airfield drainage improvements, Ph. 2. To include recon. Of existing drainage including underground concrete pipe with drainage inlets at the proper grade to meet drainage requirements.	\$31,290	\$31,290	\$637,420
2017	FSL	\$941,000	Design & Construct Apron D Recon./Rehab. (approximately 14,000 SY)	\$42,063	\$42,062	\$856,875
2017	FSL	\$300,000	EA - Twy A extension and RSA	\$13,410	\$13,410	\$273,180
2019	FSL	\$494,000	Design Twy A extension (7,350 SY)	\$22,082	\$22,082	\$449,836
2020	FSL	\$2,147,000	Constr. Twy A extension (7,350 SY)	\$95,971	\$95,971	\$1,955,058
2021	FSL	\$5,387,000	Constr. Rwy 3/21 RSA improvements	\$240,799	\$240,799	\$4,905,402
Airport Total:				\$445,615	\$445,614	\$9,077,771
SHOW LOW RGNL - NAVAJO						
2018	FSL	\$2,950,000	Rehab. Rwy 6/24 (7,200 ft x 100 ft) Mill & Overlay (Constr. Only)	\$73,750	\$73,750	\$2,802,500
2019	FSL	\$350,000	Conduct Master Plan Update with GIS	\$8,750	\$8,750	\$332,500
2020	FSL	\$150,000	Design apron expansion east of terminal building (16,000 sy).	\$3,750	\$3,750	\$142,500
2021	FSL	\$300,000	EA to Constr. Rwy 18/36 and Parallel Twy D	\$7,500	\$7,500	\$285,000
Airport Total:				\$93,750	\$93,750	\$3,562,500
SIERRA VISTA MUNI-LIBBY AAF - COCHISE						
2017	FSL	\$1,300,000	Constr. Twy P signage & lighting. Install approx. 12,000 lf of required signage and lighting.	\$58,110	\$58,110	\$1,183,780
2017	FSL	\$1,900,000	Constr. approx. 3,000 lf of Twy G & J strengthening project to include a full recon. of Twy pavement sections, new pavement areas for tapers, and relocation of lights and signs.	\$84,930	\$84,930	\$1,730,140
2018	FSL	\$400,000	EA of approx. 9,000 ft x 75 ft of Twy J, A & B extension, Ph. 4; Twy J extension project will create a civilian side parallel Twy to main Rwy 8-26.	\$17,880	\$17,880	\$364,240
2019	FSL	\$450,000	Design approx. 7,000 ft x 75 ft wide Twy J extension, 2,000 lf of adjoining Twy A & B Ph. 4 and 5. Twy J extension project will create a civilian side parallel Twy to main Rwy 8-26.	\$20,115	\$20,115	\$409,770
2019	FSL	\$200,000	EA of Rwy 12-30 and Twy K extension project. This project envisions extending Rwy 12-30 and Twy K 1,234 ft x 75 ft NW and constr. hold apron and 500 ft overrun. Constr. access road leading	\$8,940	\$8,940	\$182,120
2020	FSL	\$2,250,000	Constr. approx. 4,500 ft x 75 ft Twy J extension Ph. 4 and adjoining 1,000 lf of Twy B extension. The Twy J extension project will create a civilian side parallel Twy to main Rwy 8-26.	\$100,575	\$100,575	\$2,048,850

Appendix A

Airport Sponsor's Request for Funding PY 2017

Airport Name - County

<i>Fiscal Year</i>	<i>Funding Source</i>	<i>Requested Total</i>	<i>Project Description</i>	<i>Dist - State</i>	<i>Dist - Local</i>	<i>Dist - Federal</i>
SIERRA VISTA MUNI-LIBBY AAF - COCHISE						
2020	FSL	\$200,000	Design Rwy 12-30 & Twy K extension project. Extend Rwy 12-30 & Twy K 1,234 ft x 75 ft NW and constr. hold apron and 500 ft overrun. Constr. access road leading to AWOS.	\$8,940	\$8,940	\$182,120
2021	FSL	\$1,250,000	Constr. approx. 2,500 ft x 75 ft Twy J extension - Ph. 5 & 1,000 lf of adjoining Twy A. The Twy J extension project will create a civilian side parallel Twy to main Rwy 8-26.	\$55,875	\$55,875	\$1,138,250
2021	FSL	\$6,500,000	Constr. Rwy 12-30 & Twy K extension. Extend Rwy 12-30 & Twy K 1,234 ft x 75 ft NW and constr. hold apron and 500 ft overrun. Constr. access road leading to AWOS.	\$290,550	\$290,550	\$5,918,900
Airport Total:				\$645,915	\$645,915	\$13,158,170
SPRINGERVILLE MUNI - APACHE						
2017	FSL	\$168,000	Design rehab. of main transient apron (3 areas) including tie-down areas.	\$7,510	\$7,509	\$152,981
2018	FSL	\$79,000	Design installation of 2,600 lf of perimeter fence (six foot with three strands of barbed wire) on southwest side of airport perimeter.	\$3,531	\$3,532	\$71,937
2018	FSL	\$995,000	Constr. Rehab. of main transient apron (3 areas) including tie-down areas.	\$44,476	\$44,477	\$906,047
2019	FSL	\$624,000	Install approx. 7,500 lf of perimeter fence (six foot with three strands of barbed wire) Ph. I, northeast to southwest side of airport perimeter.	\$27,893	\$27,893	\$568,214
2020	FSL	\$695,000	Construct North Transient Apron Expansion (5,000 SF)	\$31,066	\$31,067	\$632,867
2021	FSL	\$150,000	Design Snow Removal Equipment Building (50 ft x 100 ft) north of terminal building.	\$6,705	\$6,705	\$136,590
Airport Total:				\$121,181	\$121,183	\$2,468,636
TAYLOR - NAVAJO						
2017	FSL	\$250,000	Complete Phase 2 of the AIP 20 Perimeter/Security fence project adjacent to the Parcel 9 land acquisition and the General Aviation Apron and Terminal	\$11,175	\$11,175	\$227,650
2018	FSL	\$100,000	Develop an updated ALP and update narrative including an updated capital improvement program for 2020 - 2030.	\$4,470	\$4,470	\$91,060
2018	FSL	\$175,000	Replace 16 obsolete Rwy and Twy guidance signs with new LED signs	\$7,822	\$7,823	\$159,355
2019	FSL	\$350,000	Relocate and install new self serve Av gas fuel farm with provision for future Jet-A fuel northeast of the apron. Install 3,000 sy of apron and taxilanes for fuel farm relocation.	\$15,645	\$15,645	\$318,710
2020	FSL	\$800,000	Constr. and reconfigure apron (5,000 sy) to east side of existing apron to meet design standards. Relocate security perimeter fence from terminal building along apron reconfiguration, reconfigure 2,000 sy access road & parking area.	\$35,760	\$35,760	\$728,480

Appendix A

Airport Sponsor's Request for Funding PY 2017

Airport Name - County

<i>Fiscal Year</i>	<i>Funding Source</i>	<i>Requested Total</i>	<i>Project Description</i>	<i>Dist - State</i>	<i>Dist - Local</i>	<i>Dist - Federal</i>
TAYLOR - NAVAJO						
2021	FSL	\$330,000	Construct access road (1,500 ft x 24 ft) along the SE side of the existing hangar development area to hangars near Rwy 21 threshold.	\$14,751	\$14,751	\$300,498
Airport Total:				\$89,623	\$89,624	\$1,825,753
TUCSON INTL - PIMA						
2017	FSL	\$18,135,028	Recon. of Rwy 11L-29R, shoulders and Connector Twys (approx. 350,000 sf). Mill/replace surface course and appurtenances including adjustment of center light fixtures, re-grooving and striping.	\$810,636	\$810,636	\$16,513,756
2018	FSL	\$1,350,807	Phase 4 Straighten Twy D2 (approximately 40,500 sf).	\$60,381	\$60,381	\$1,230,045
2018	FSL	\$1,800,000	Ph.2 - Recon. Half of south portion of Twy D, shoulders and connectors. Mill/overlay (approx. 450,000 sf). Project includes marking and re-striping.	\$80,460	\$80,460	\$1,639,080
2018	FSL	\$1,500,000	Ph. 3 - Recon. Half of South Portion of Twy D, shoulders & connectors. Mill/overlay (approximately 450,000 sf). Project includes marking and re-striping.	\$67,050	\$67,050	\$1,365,900
2019	FSL	\$11,946,757	Design for proposed development of 150 ft x 11,000 ft PCC Rwy 11R-29L. Project includes relocation of extg. Rwy and constr. of new parallel Rwy.	\$534,020	\$534,020	\$10,878,717
2021	FSL	\$52,307,899	Constr. 150 ft x 11,000 ft PCC Rwy 11R-29L. Project includes relocation of extg. Rwy and constr. of new parallel Rwy.	\$2,338,163	\$2,338,163	\$47,631,573
Airport Total:				\$3,890,710	\$3,890,710	\$79,259,071
WHITERIVER - NAVAJO						
2017	FSL	\$290,000	Replace PAPI and REILs.	\$12,963	\$12,963	\$264,074
2018	FSL	\$195,000	Crack Seal, Fog Seal and Remark Twy A (6,350 ft x 35 ft) and Connector Twys (5- at 240 ft x 35 ft) (Design & Construct)	\$8,717	\$8,717	\$177,567
2018	FSL	\$85,000	Remove Building RI in BIA yard.	\$3,800	\$3,800	\$77,401
2020	FSL	\$470,000	Install lighting and signage on Twy A and connectors.	\$21,009	\$21,009	\$427,982
Airport Total:				\$46,489	\$46,489	\$947,024
WICKENBURG MUNI - MARICOPA						
2017	FSL	\$150,000	Design an expanded T-hangar development area including site preparation, drainage, utilities, and taxilanes (15,000 sy).	\$6,705	\$6,705	\$136,590
2017	FSL	\$26,250	Design wash rack to help ensure that AC washing meets all state and federal environmental requirements.	\$1,173	\$1,174	\$23,903
2018	FSL	\$15,000	Design installation of ODALs for Rwy 23.	\$670	\$671	\$13,659
2018	FSL	\$175,000	Constr. of a wash rack that will help ensure that AC washing meets all state and federal environmental requirements.	\$7,822	\$7,823	\$159,355

Appendix A

Airport Sponsor's Request for Funding PY 2017

Airport Name - County

<i>Fiscal Year</i>	<i>Funding Source</i>	<i>Requested Total</i>	<i>Project Description</i>	<i>Dist - State</i>	<i>Dist - Local</i>	<i>Dist - Federal</i>
WICKENBURG MUNI - MARICOPA						
2018	FSL	\$1,500,000	Constr. expanded T-hangar development area including site preparation, drainage, utilities, and taxilanes (15,000 sy).	\$67,050	\$67,050	\$1,365,900
2019	FSL	\$34,500	Design for the installation of LED MIRL/MITL (approx. 13,450 lf).	\$1,542	\$1,542	\$31,416
2019	FSL	\$100,000	Install ODALs for Rwy 23.	\$4,470	\$4,470	\$91,060
2020	FSL	\$230,000	Installation of LED MIRL/MITL (approx. 13,450 lf).	\$10,281	\$10,281	\$209,438
Airport Total:				\$99,713	\$99,716	\$2,031,321
WINDOW ROCK - APACHE						
2017	FSL	\$1,150,000	Replace Rwy edge lighting, signage, PAPIs, REILs, beacon, vault, wind cone, segmented circle and service entrance.	\$51,405	\$51,405	\$1,047,190
2018	FSL	\$5,400,000	Rehab. Rwy 2/20 (7,000 ft x 75 ft) (Constr. Only)	\$241,380	\$241,380	\$4,917,240
Airport Total:				\$292,785	\$292,785	\$5,964,430
WINSLOW-LINDBERGH RGNL - NAVAJO						
2017	FSL	\$2,000,000	Constr. Rwy 4-22 recon., Ph. 2(46,000 SY)	\$89,400	\$89,400	\$1,821,200
2018	FSL	\$300,000	Design Rwy 11-29 recon. (7,099 ft x 100 ft, approx. 79,000 sy).	\$13,410	\$13,410	\$273,180
2019	FSL	\$2,500,000	Constr. Rwy 11-29 recon., Ph. I (3,600 ft x 100 ft, approximately 40,000 sy)	\$111,750	\$111,750	\$2,276,500
2020	FSL	\$2,500,000	Constr. Rwy 11-29 recon. Ph. 2 (3,500 ft x 100 ft, approximately 3,900 sy)	\$111,750	\$111,750	\$2,276,500
2021	FSL	\$200,000	Conduct EA for land acquisitions for Rwy 4-22 pavement, shift and levee relocation: Parcel ID #103-09-003H (75 acres, State Land Department), and #103-09-002H (3 acres).	\$8,940	\$8,940	\$182,120
Airport Total:				\$335,250	\$335,250	\$6,829,500
YUMA MCAS/YUMA INTL - YUMA						
2017	FSL	\$3,250,000	Design and constr. rehab of PCC Twy H1 north of Rwy 21R/3L, 3,000 ft x 75 ft plus 276 ft x 456 ft run up apron approx. 40,000 sy	\$145,275	\$145,275	\$2,959,450
2021	FSL	\$2,500,000	Constr. 10,000 lf new lighting on Twy F and Twy H with recon. of extg. electrical vault to include emergency generator.	\$111,750	\$111,750	\$2,276,500
Airport Total:				\$257,025	\$257,025	\$5,235,950
All Requested FAA Airport Projects				\$54,832,212	\$55,813,359	\$819,679,403