



Finding Water

Presented By:

HydroSystems, Inc.

9831 S. 51st Street, Suite C-115

Phoenix, Arizona 85044

Tel: 480-517-9050 Fax: 480-517-9049

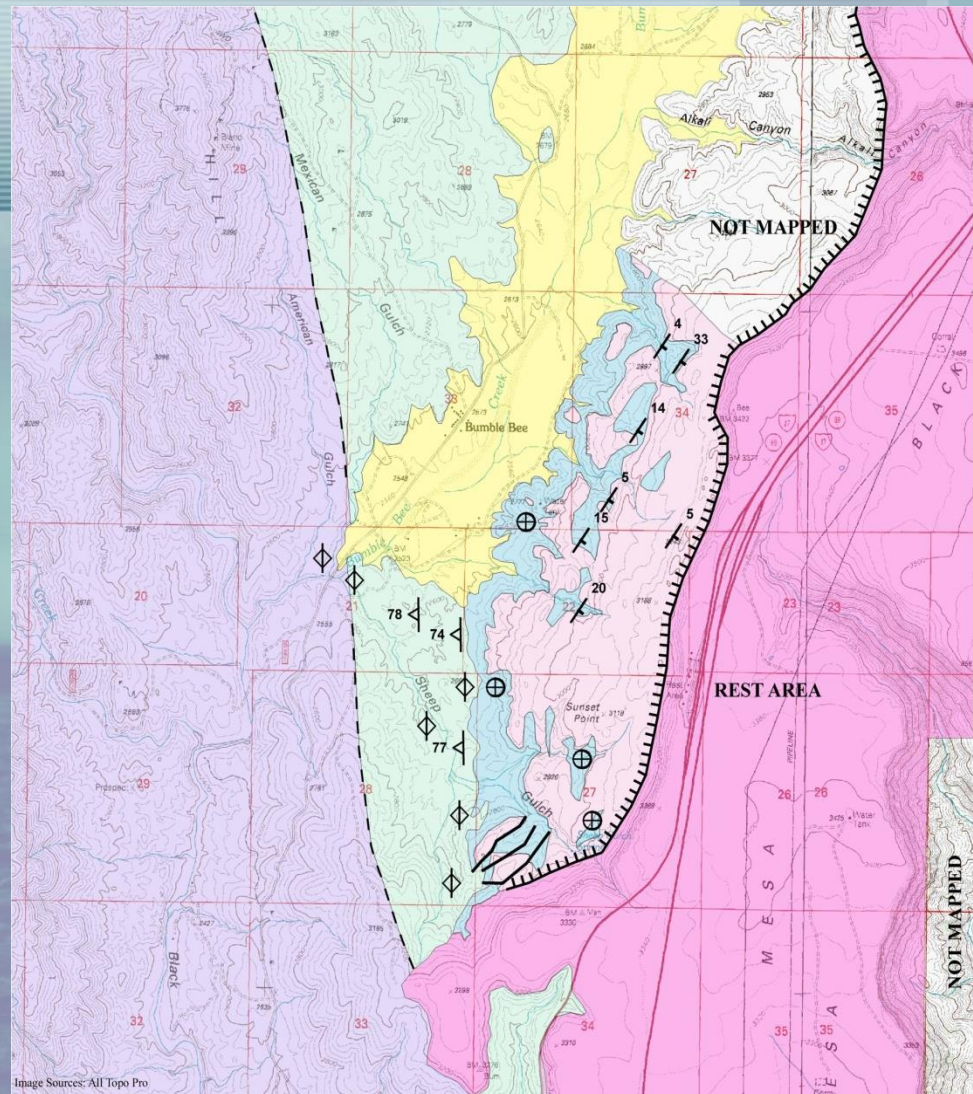
Website: www.hydrosystems-inc.com



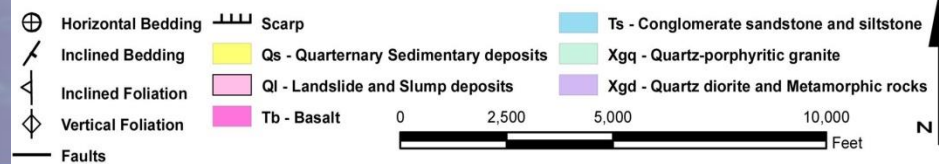
Rest Area



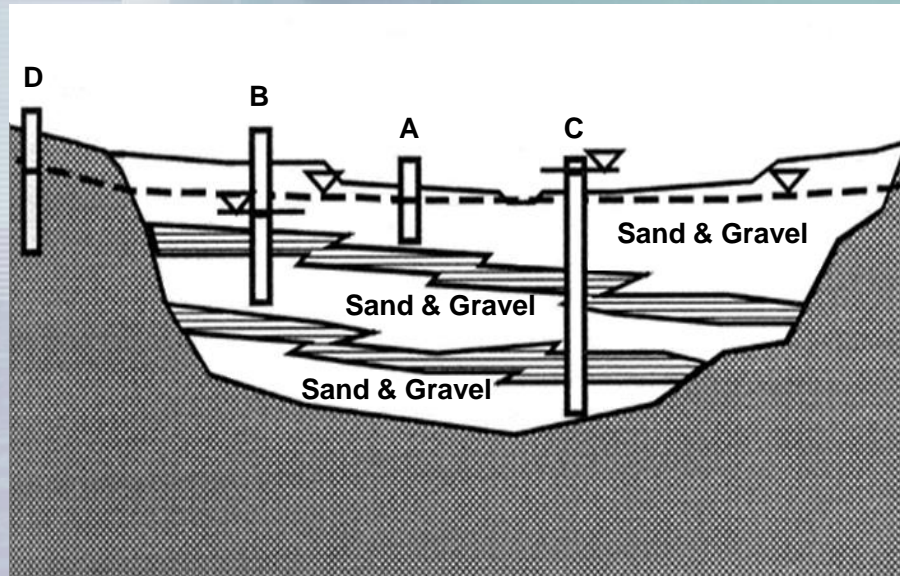
Geologic Map



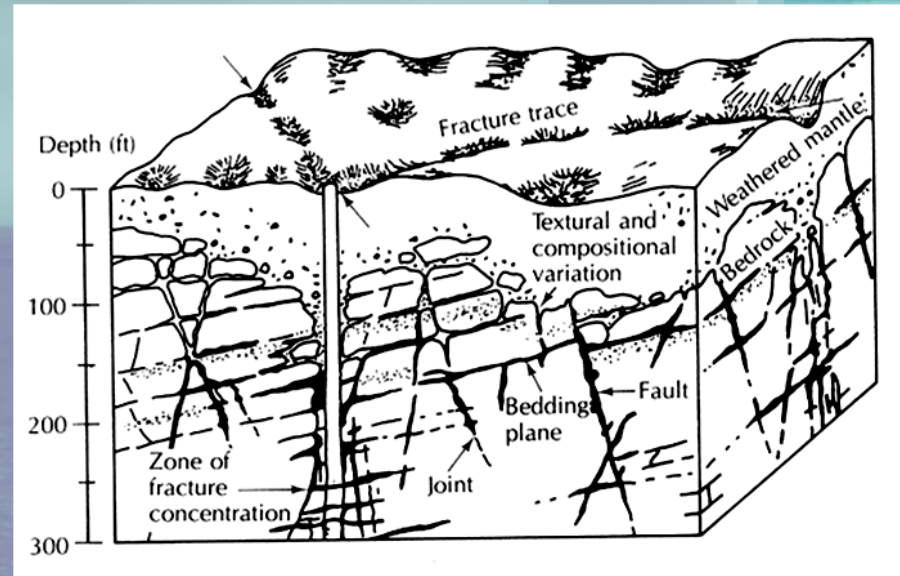
Legend



Types of Aquifers



Valley Fill Aquifer

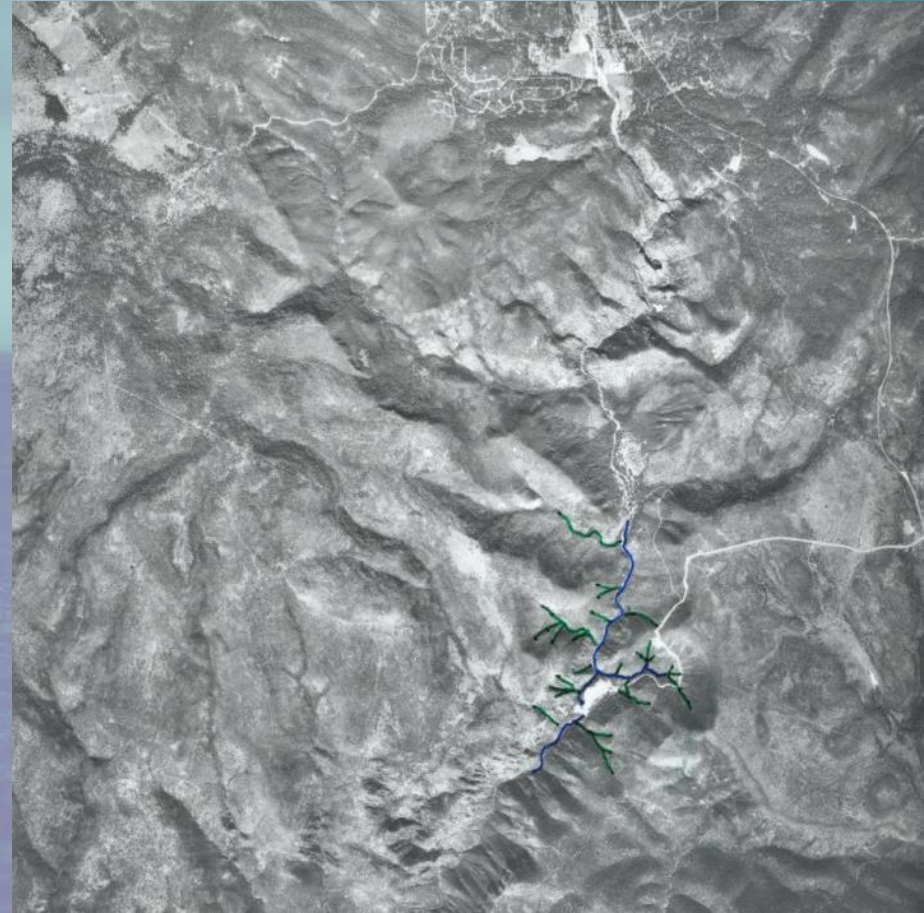


Hard Rock Aquifer

Air Photo Interpretation

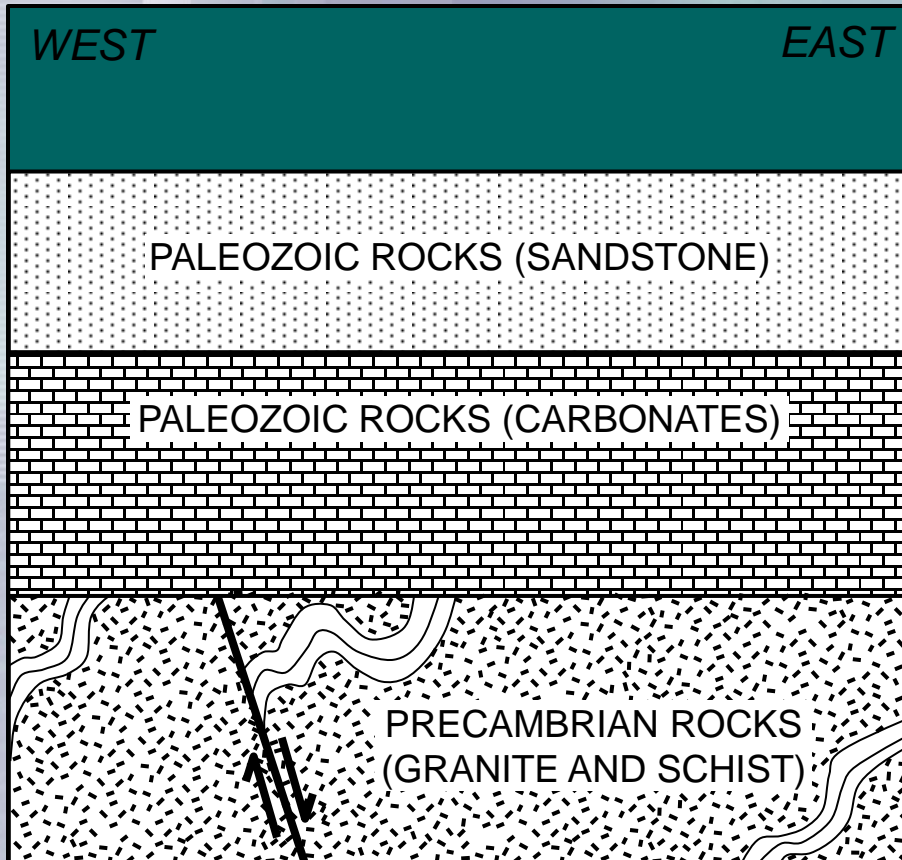


Aerial Photo

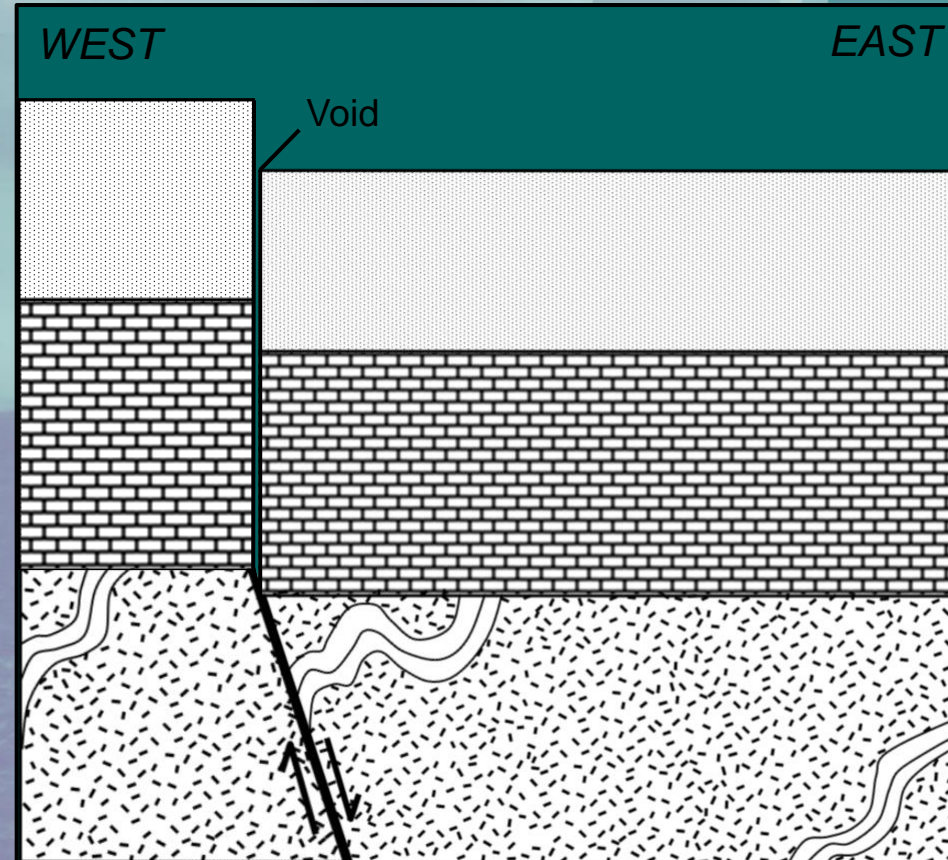


Fracture Trace

Types of Faults

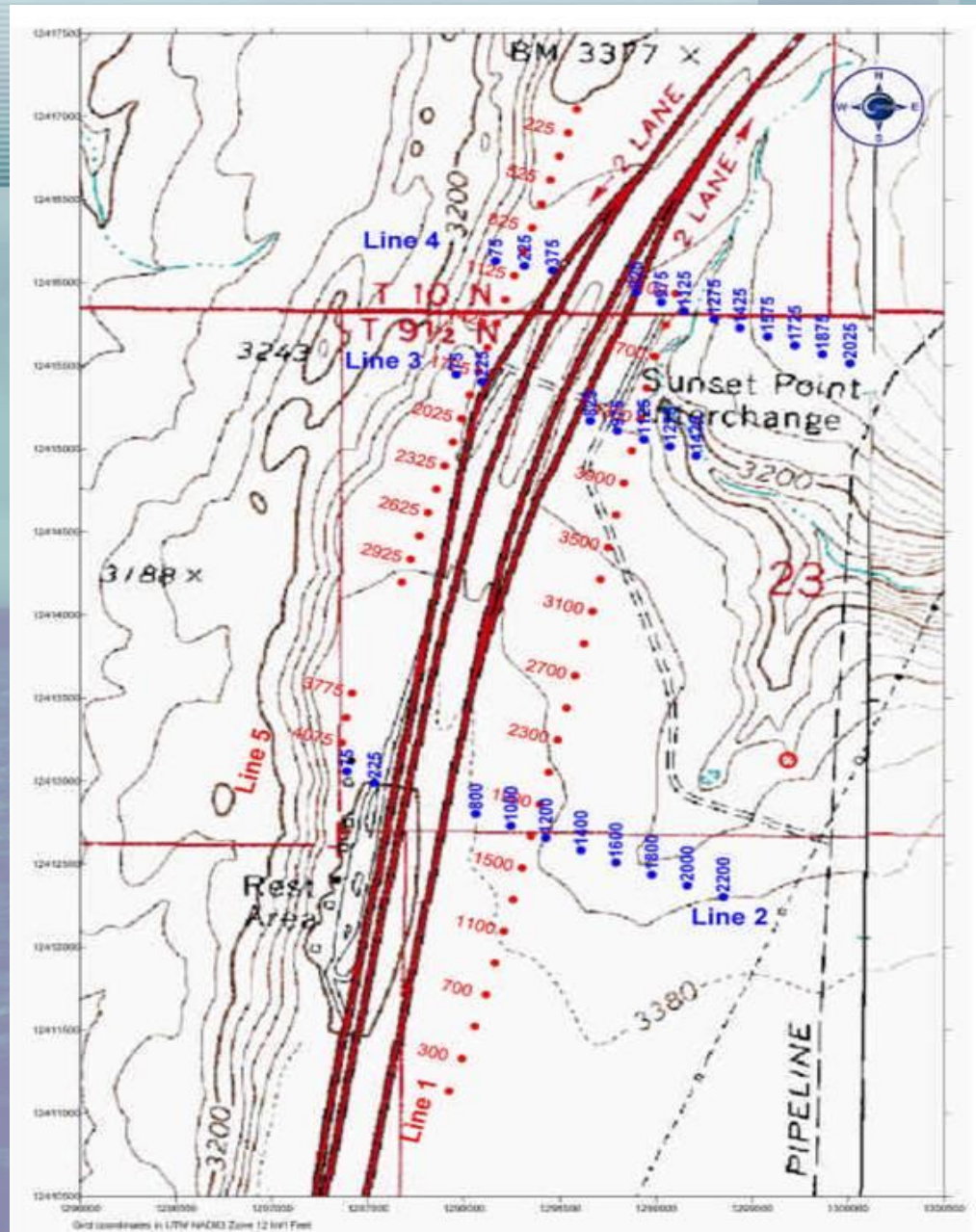


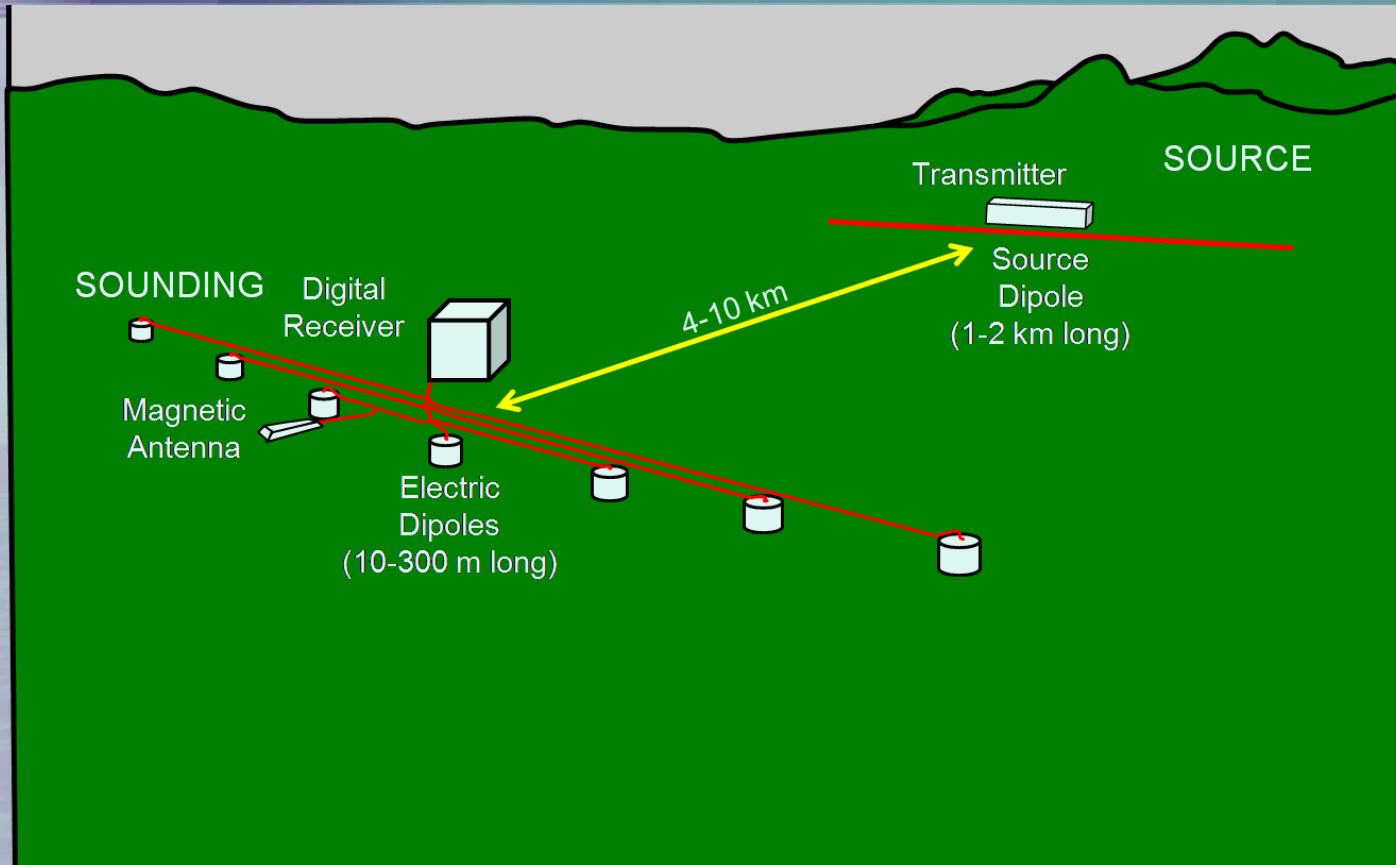
Buried Fault



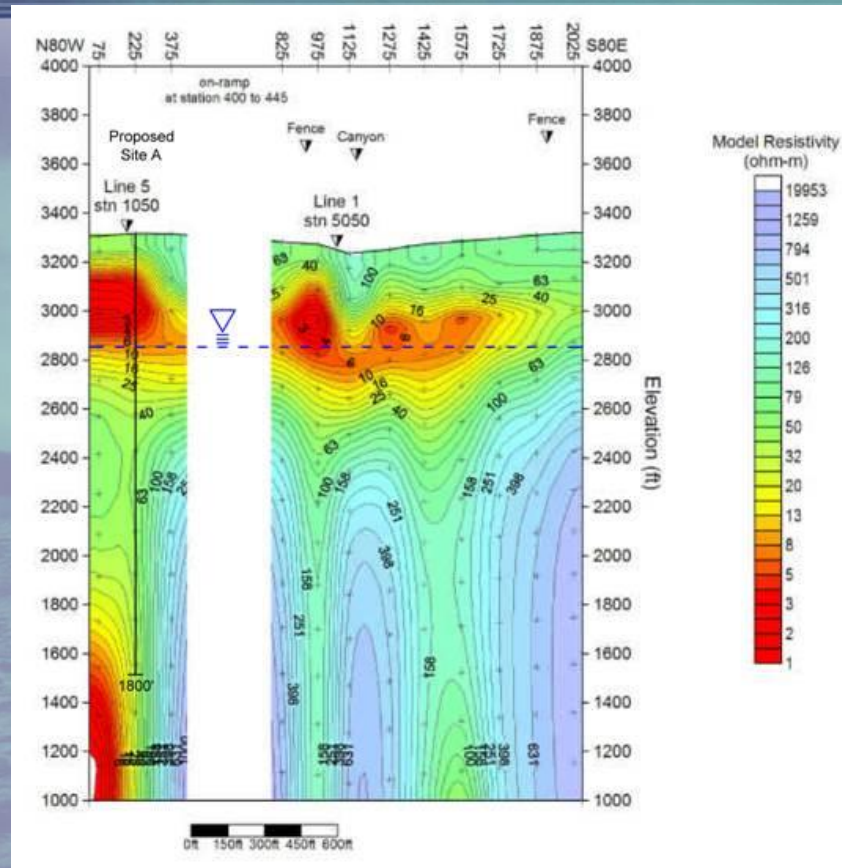
Exposed Fault

Sunset Point Line Locations



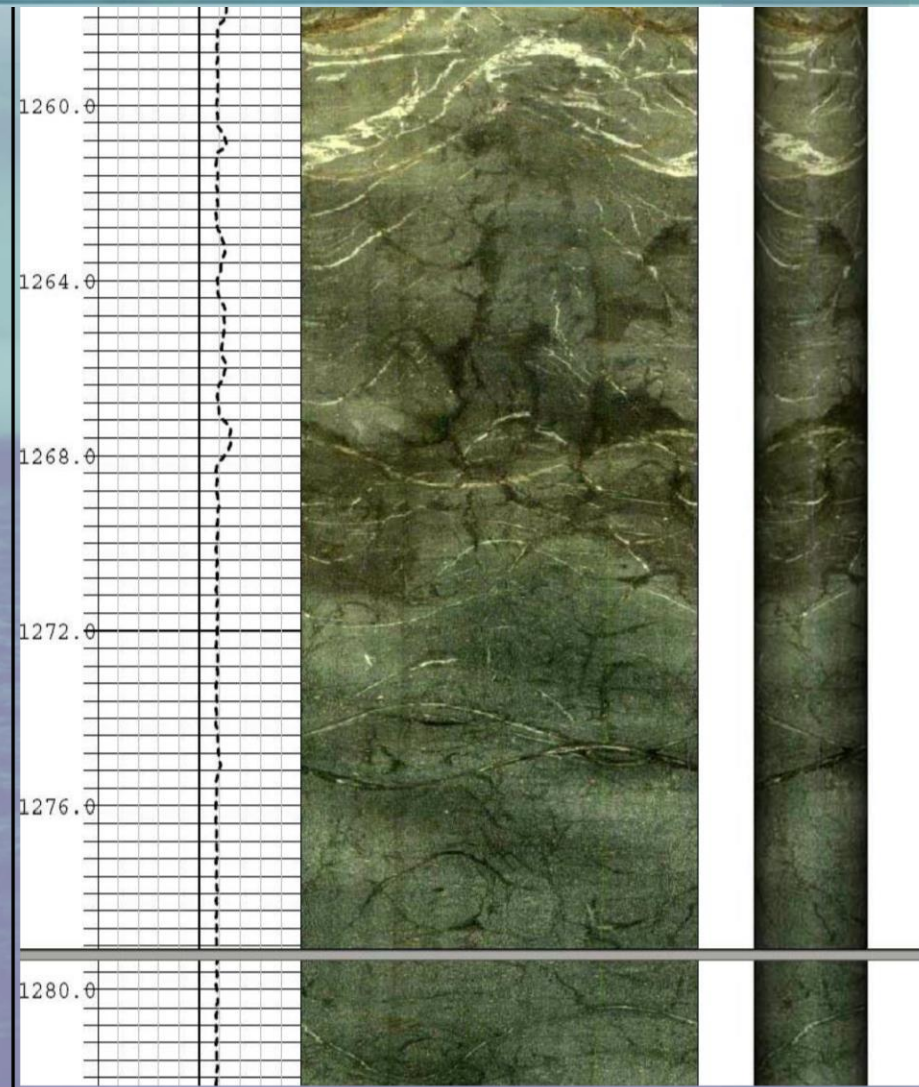


Electromagnetic Geophysical Survey



Fracture on Line 4

Sunset Point Open Borehole Fractures





Rest Area

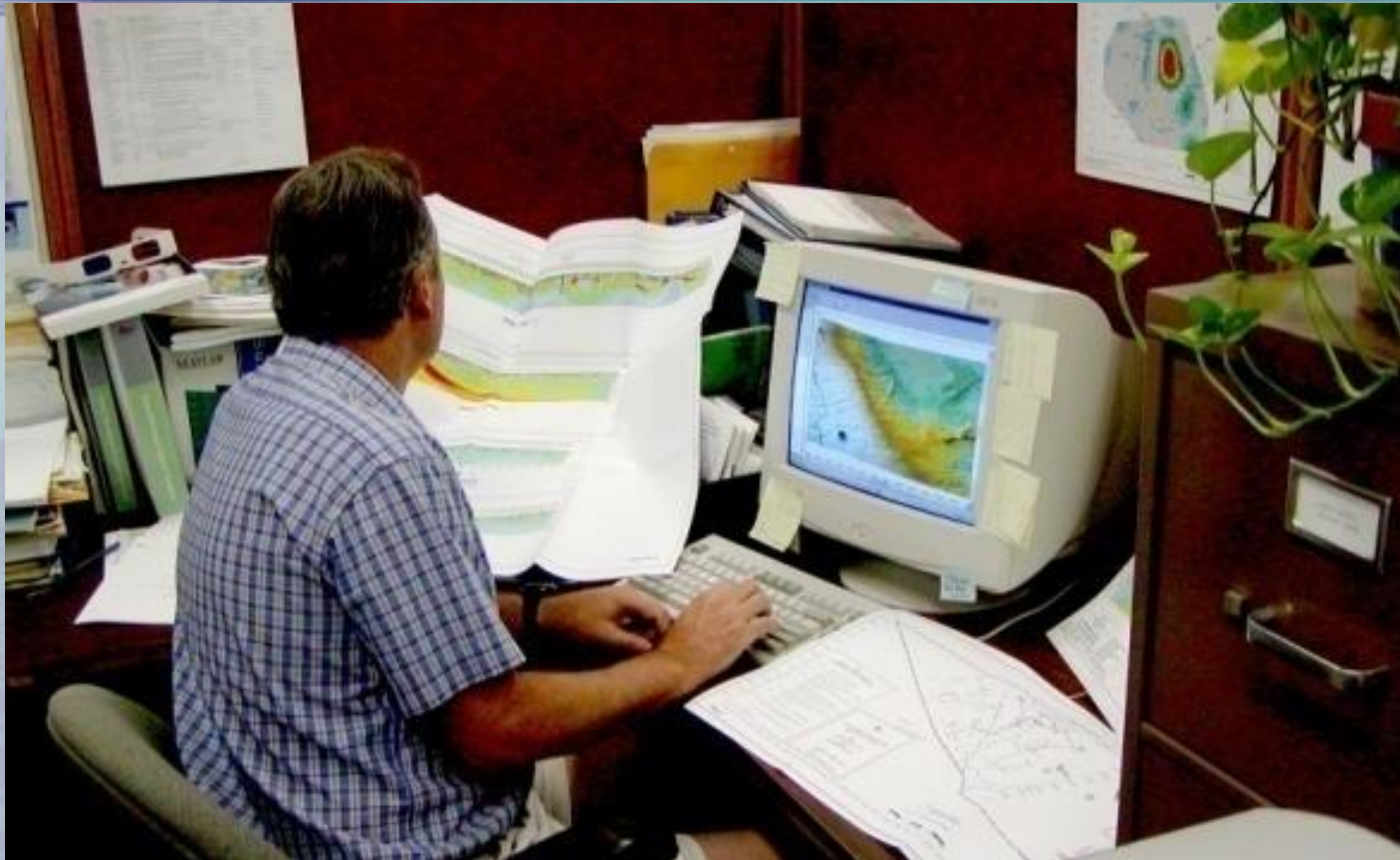
Sunset Point
Well



Transmitter Truck and 30kw Generator



GDP 32 Digital Receiver



Data Processing and Modeling

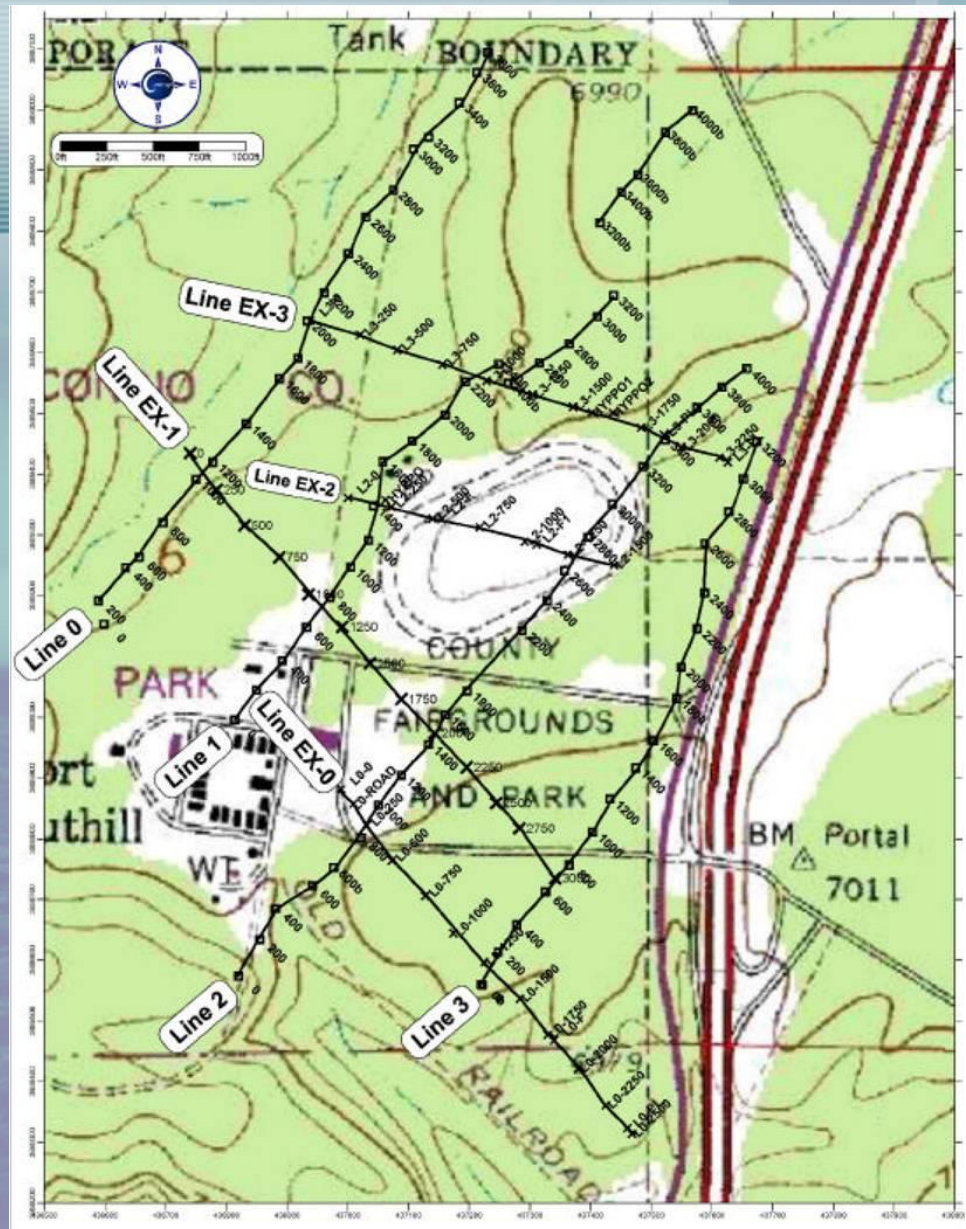


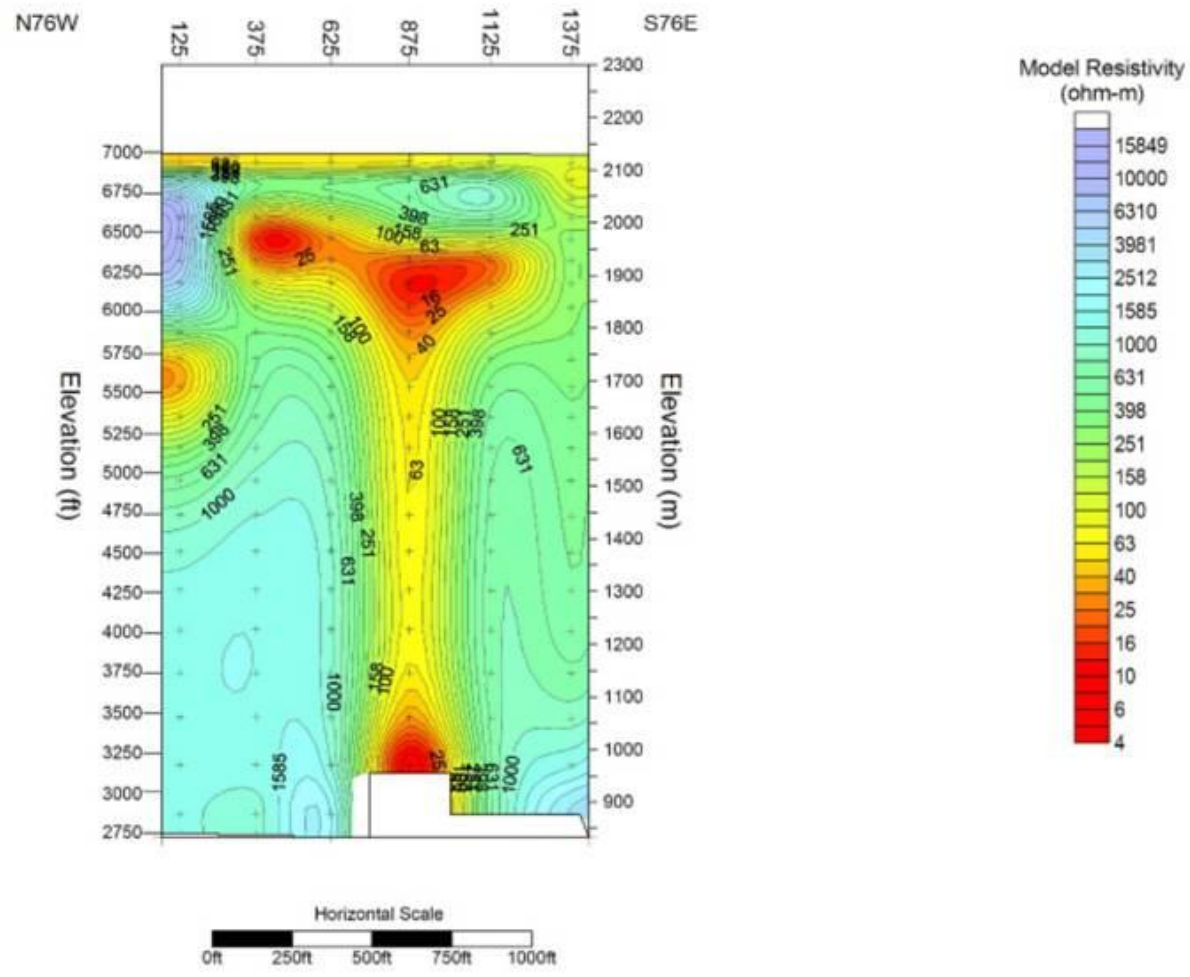
Data Interpretation and Site Selection

Fort Tuthill Flagstaff, AZ



Fort Tuthill Line Locations



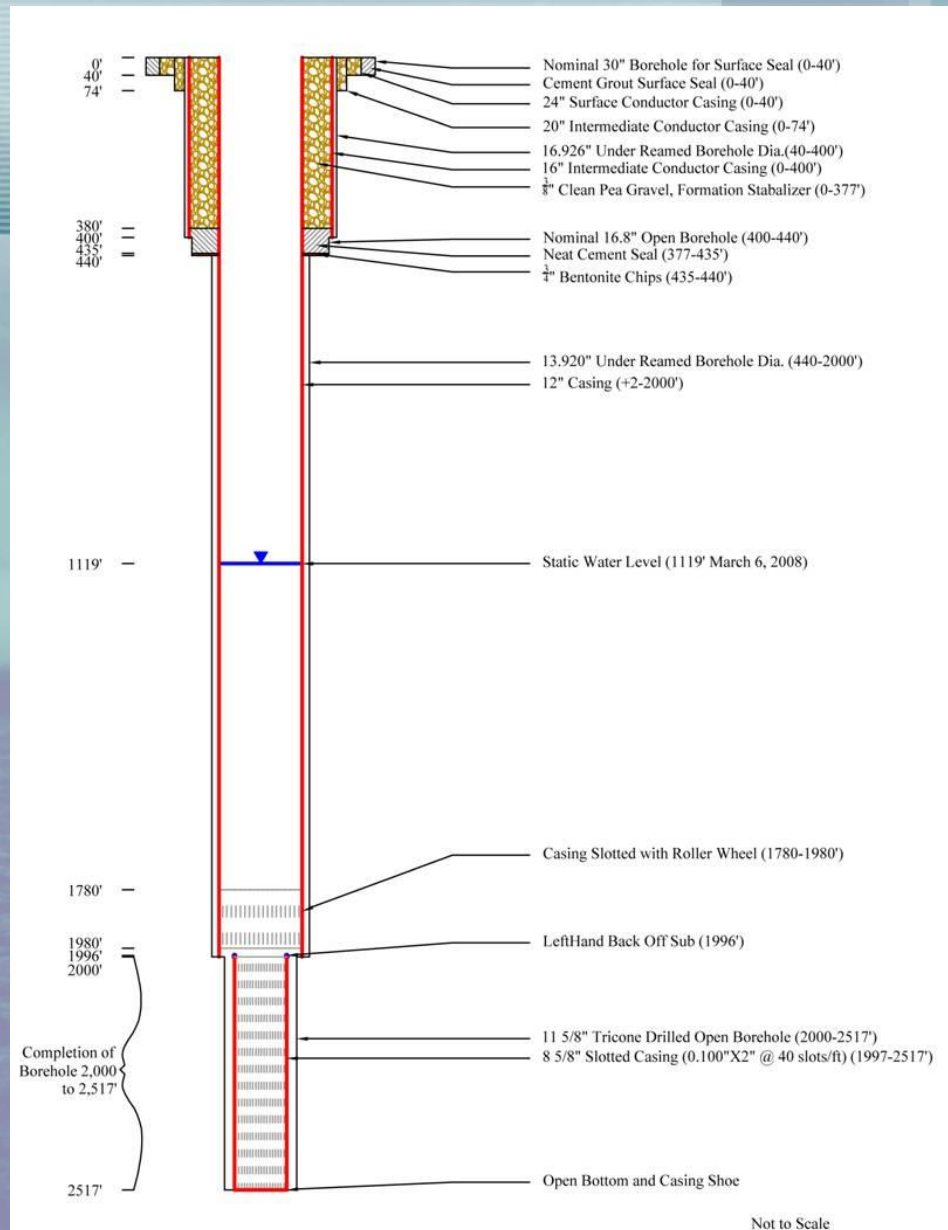


Fault on Line EX-2



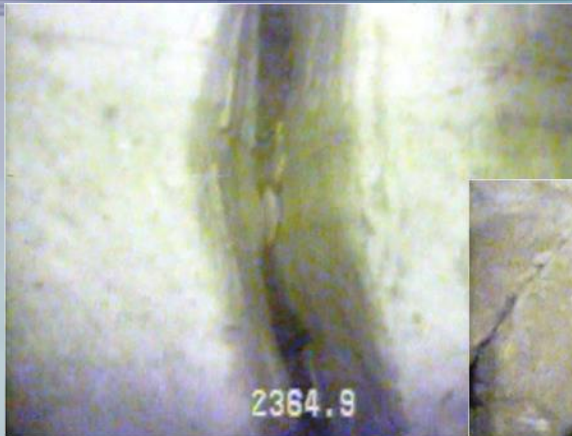
Grand Canyon Sedimentary Units

Fort Tuthill As-Built Design





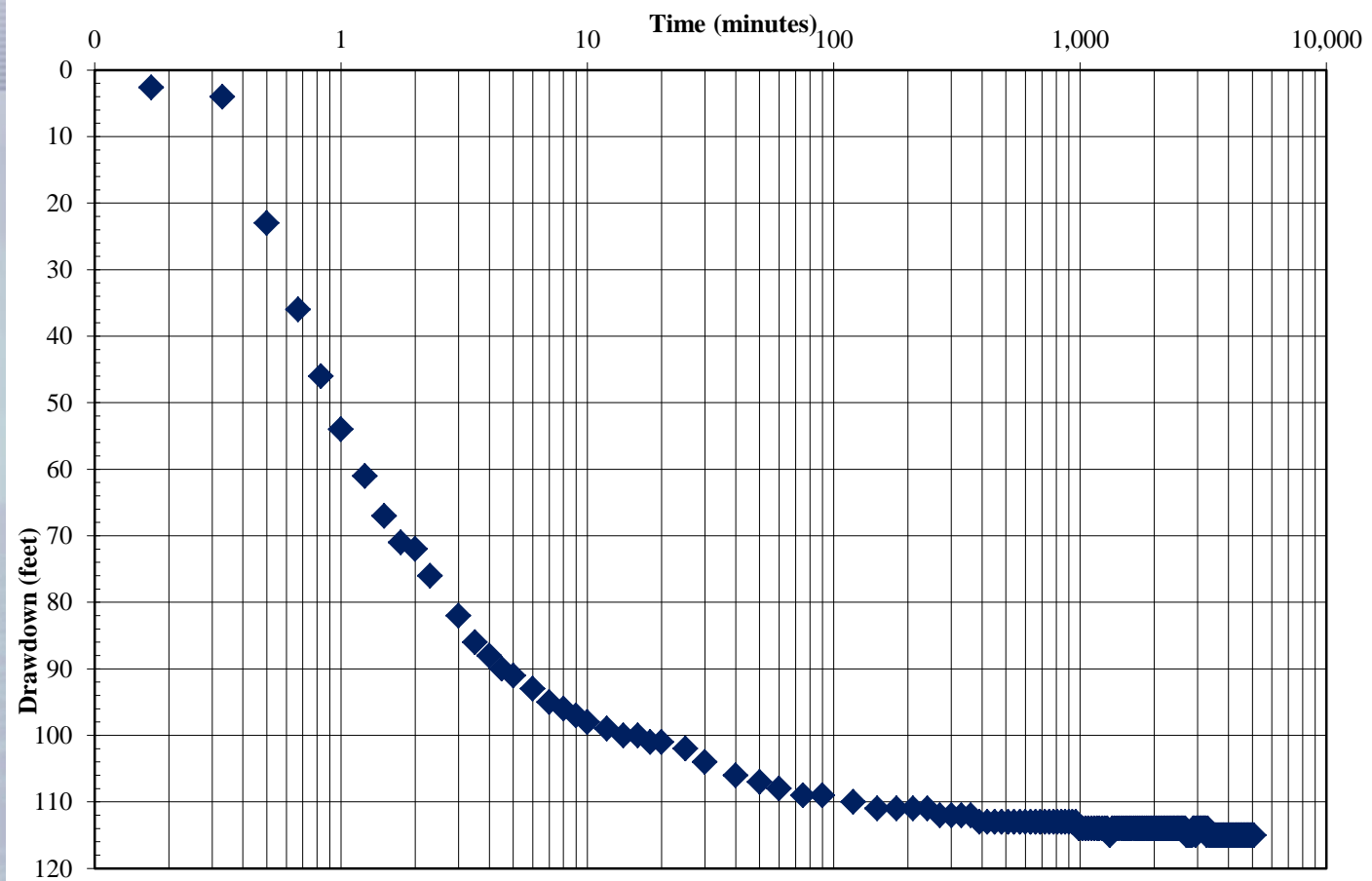
Fort Tuthill Well Dual Rotary Drilling



Fort Tuthill Open Borehole Fractures



Fort Tuthill Aquifer Testing



Fort Tuthill -1,340 gpm, 11.6 gpm/ft, 5-day test

Summary

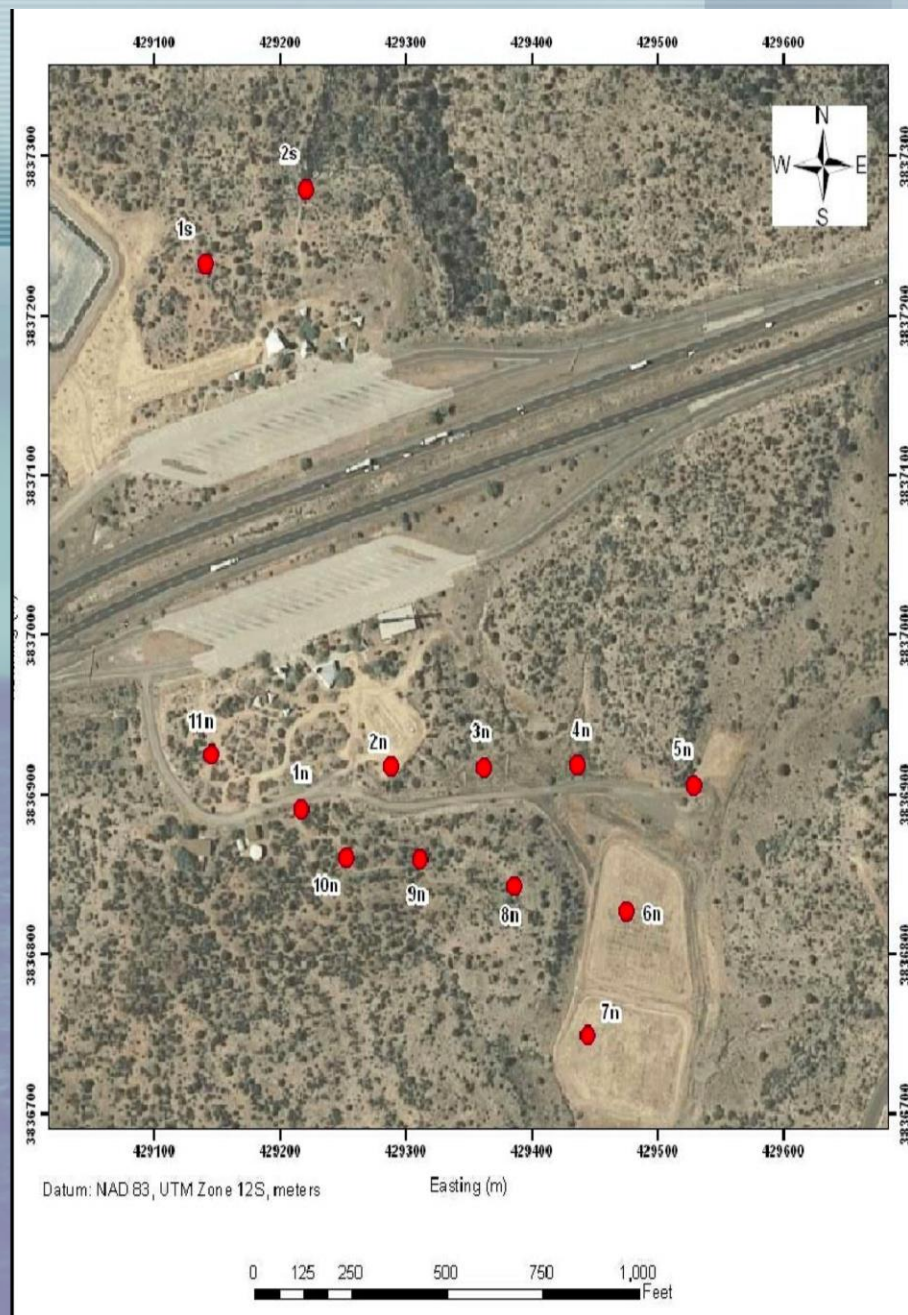
- Cost-effective remote sensing technique
- Integration of geophysical and hydrogeological Information
- Reduced risk of drilling in alluvial and fractured hard-rock terrain
- Recharge evaluation technique
- Experience is key in well site evaluation studies

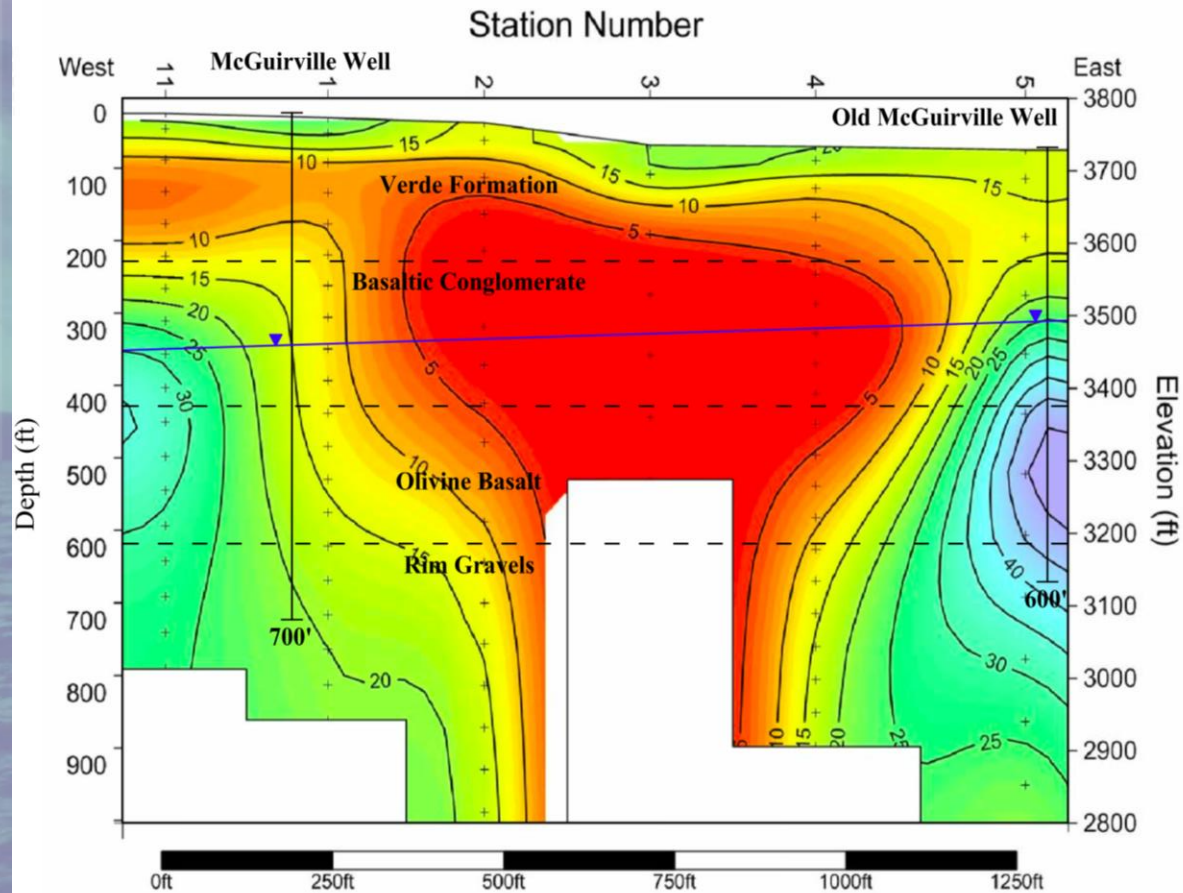
The background of the image is a full-frame photograph of a sky during a sunset or sunrise. The clouds are dense and textured, with a color gradient from deep blue at the top to bright orange and yellow at the bottom. The text "The End" is centered in the middle of the image.

The End



McGuireville Line Locations

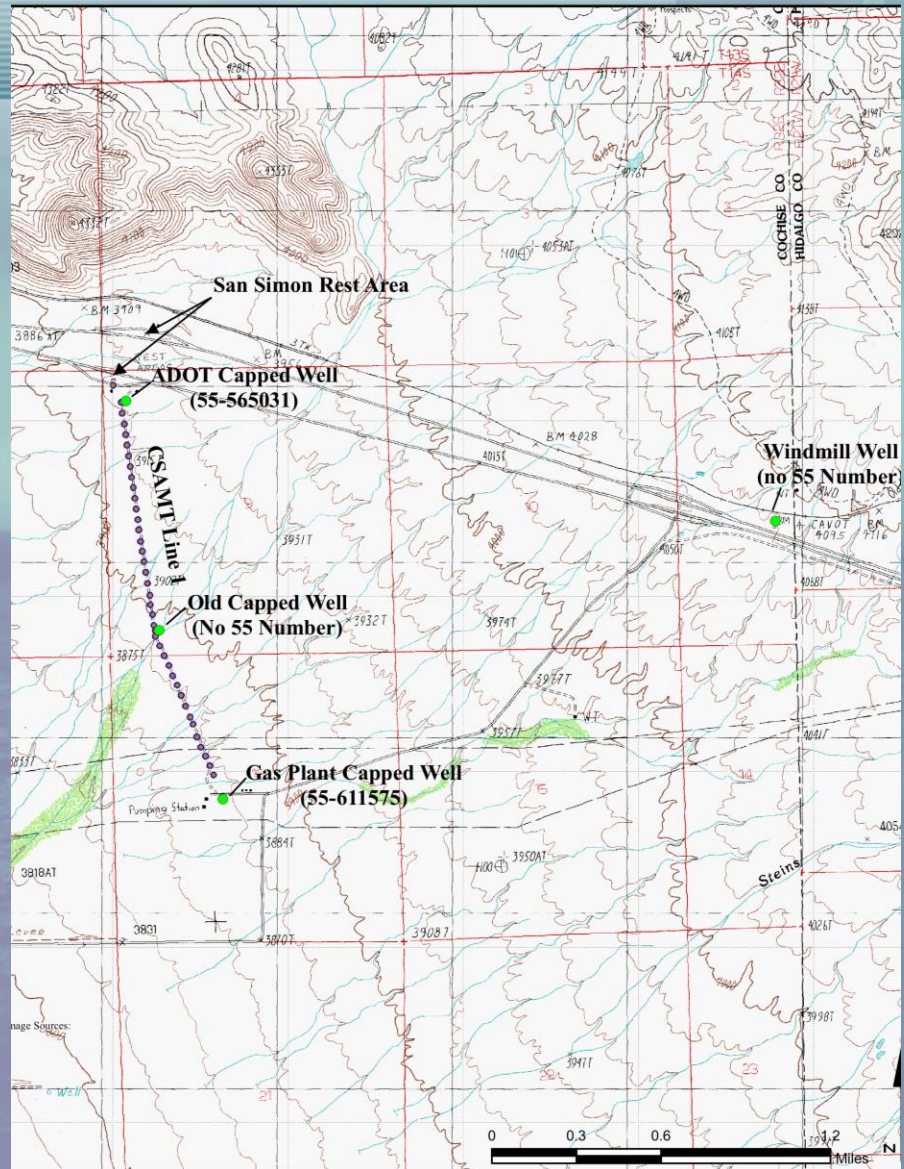




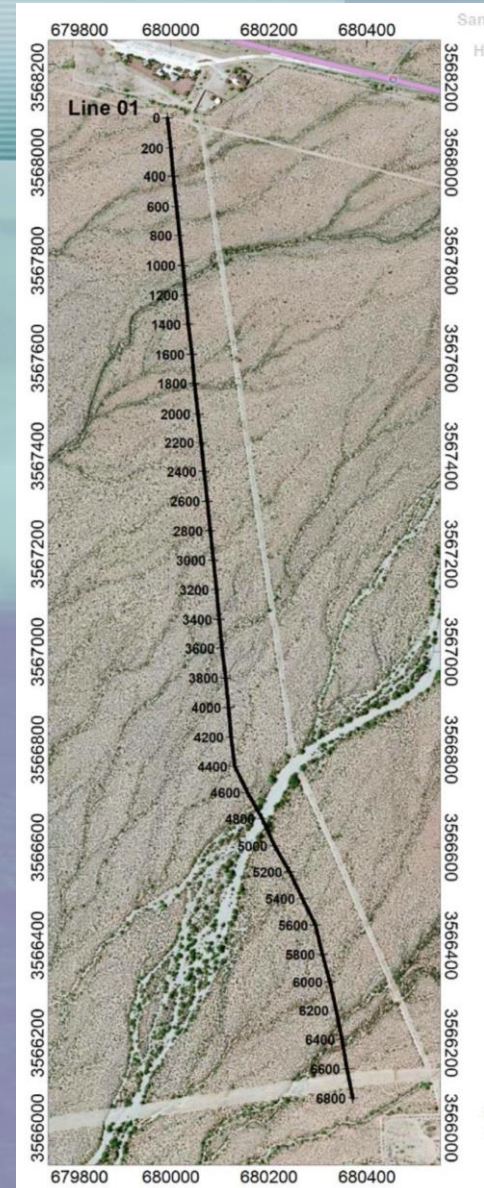
Geophysical Cross-Section and Hydrogeology

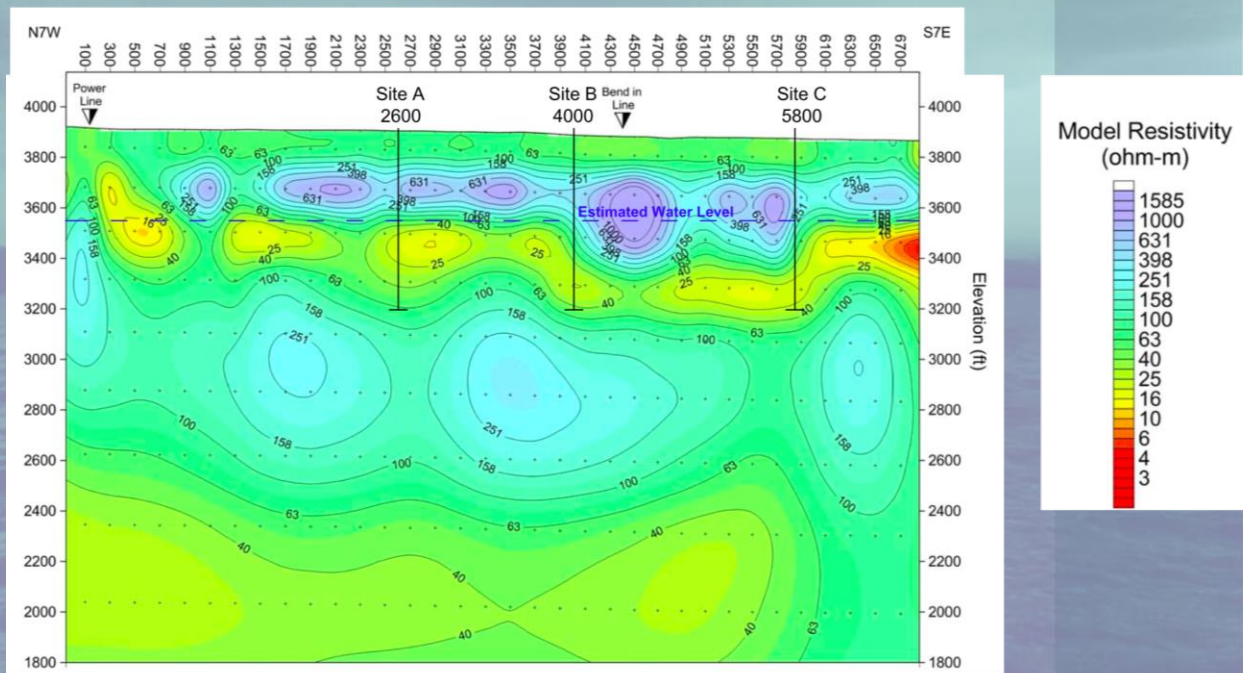


San Simon Line Locations



San Simon Line Locations





Geophysical Cross-Section

