

Keep this brochure in your vehicle's glove box when traveling in the high country.

Plan your travel route in advance

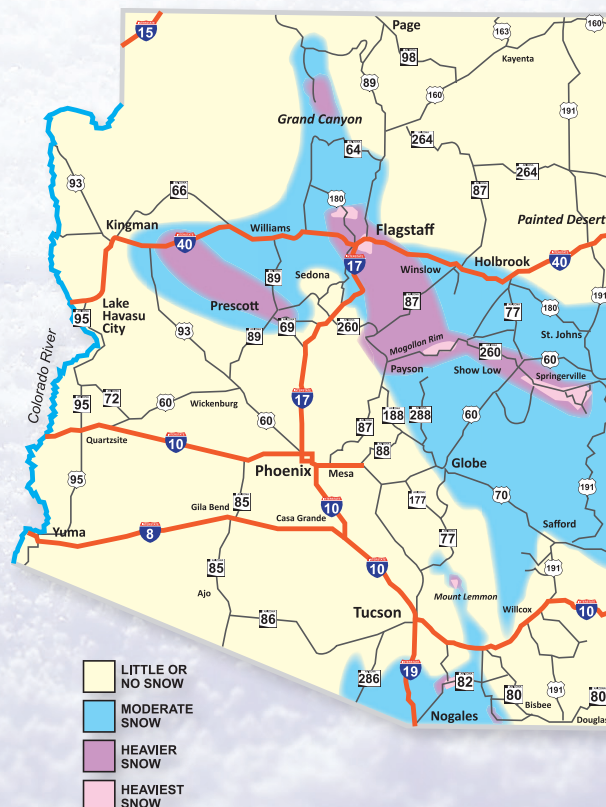
- ▶ Notify someone of your route, destination and projected arrival time.
 - ▶ Try to keep your fuel tank at least three-quarters full.
 - ▶ Visit az511.gov or dial 511 for updated road and weather conditions.
- However, never use a cell phone or mobile device while driving unless it is an emergency call to 911.



Vehicle supplies

- ▶ Fully charged cell phone
- ▶ Flashlight with extra batteries
- ▶ Drinking water
- ▶ Winter coats, warm blankets or both
- ▶ First-aid kit and any prescribed medication
- ▶ Ice scraper and small shovel
- ▶ Bag of sand (or cat litter) for wheel traction
- ▶ Travel tool kit and battery cables
- ▶ Safety flares
- ▶ Road map
- ▶ Prepackaged fruits, nuts and nutrition bars

Where does it snow in Arizona?



Winter road closure advisory

ADOT closes several small state routes in Northern Arizona annually from winter through spring due to heavy snowfall. Visit azdot.gov/KnowSnow for more information and check az511.gov or call 511 before you travel to find out about other possible weather-related travel restrictions.

Do not ignore road closures. Never attempt to drive on a road that has been closed; you could become stranded indefinitely, especially during severe weather.

BEFORE YOU GO ... KNOW! SNOW!



Enjoy Arizona's high country with these winter weather driving tips



azdot.gov/KnowSnow

Preparing your vehicle

Make sure your vehicle is in good working condition, paying special attention to the battery, ignition, exhaust, thermostat, defroster, heater and brakes.

Take these precautions as well:

- ▶ Use snow tires, chains or studded tires as recommended on snowy, icy roads. Studded tires are permitted on Arizona highways from Oct. 1 to May 1.
- ▶ Install new windshield wiper blades and solvent.
- ▶ Ensure your headlights, taillights, brake lights and turn signals work well and can be seen if visibility is low.
- ▶ Keep windshields and all interior auto glass clean to minimize visual problems caused by glare from headlights, snow and bright sun.

DRIVE AN ELECTRIC OR HYBRID VEHICLE?

Cold-starting places heavy demand on all batteries. Ensure your battery has sufficient voltage and that the connection cables are tight. Have a mechanic inspect the charging system and belts.



Driving on wet or icy roadways

- ▶ Drive for conditions: slower speed, slower acceleration.
- ▶ Use your headlights.
- ▶ Do not use cruise control.
- ▶ Brake slowly. If you skid, don't panic and slam on the brakes or jerk the steering wheel. Stay calm, ease off the accelerator, brake very lightly, and steer straight or slightly into the direction of the skid.
- ▶ Four-wheel and all-wheel drive vehicles do not stop or steer better on ice.
- ▶ Leave extra room between your vehicle and the vehicle in front of you.
- ▶ Remember, the larger the vehicle, the longer the stopping distance.
- ▶ Slow down when approaching intersections, off-ramps and bridges.
- ▶ Be alert: ice forms on bridges first and is hard to see.

If the electric vehicle has a thermal heating pack for the batteries, keep the vehicle plugged in when not in use. If it has a preheat function to warm the interior, set it to warm the passenger compartment before you unplug it in the morning. Always make sure your tank has fresh gasoline.

Stalled or stopped vehicles

- ▶ If possible, do not stop in or near travel lanes. Stop in a safe area where the vehicle can be serviced or removed. Do not stay in or close to a disabled vehicle.
- ▶ If you must remain in your vehicle, keep the interior dome light turned on and put something brightly colored on your windows or antenna.
- ▶ Do not keep your vehicle running with the windows rolled up—doing so can lead to carbon monoxide poisoning. Instead, clear snow from your exhaust pipe and run the vehicle sporadically to stay warm, keeping a window cracked.



DID YOU KNOW?

ADOT has 395 employees trained and ready to operate the nearly 200 snowplows in Arizona's fleet.

Respect the plow!

During or immediately after a snowstorm, your best bet is to stay indoors until the weather and roadways are clear. If you must drive, remember these tips when sharing the road with snowplows:

- ▶ Never pass a snowplow! Slow down and be patient.
- ▶ Stay at least four car lengths behind snowplows and equipment. Plowed snow can create a cloud that reduces visibility, and spreaders on trucks throw salt or sand that can damage your vehicle.
- ▶ Watch for snowplows operating in multiple travel lanes or in tandem.
- ▶ If approaching an oncoming snowplow, slow down and give the plow extra room.