

## APPENDIX A

---

## APPENDIX A-1

---

- Statewide Nonattainment and Maintenance Area Map
  - Arizona Nonattainment and Maintenance Areas and Current SIP Status by Pollutant Table
-

Figure A1- 1: Arizona Statewide Nonattainment and Maintenance Areas Map

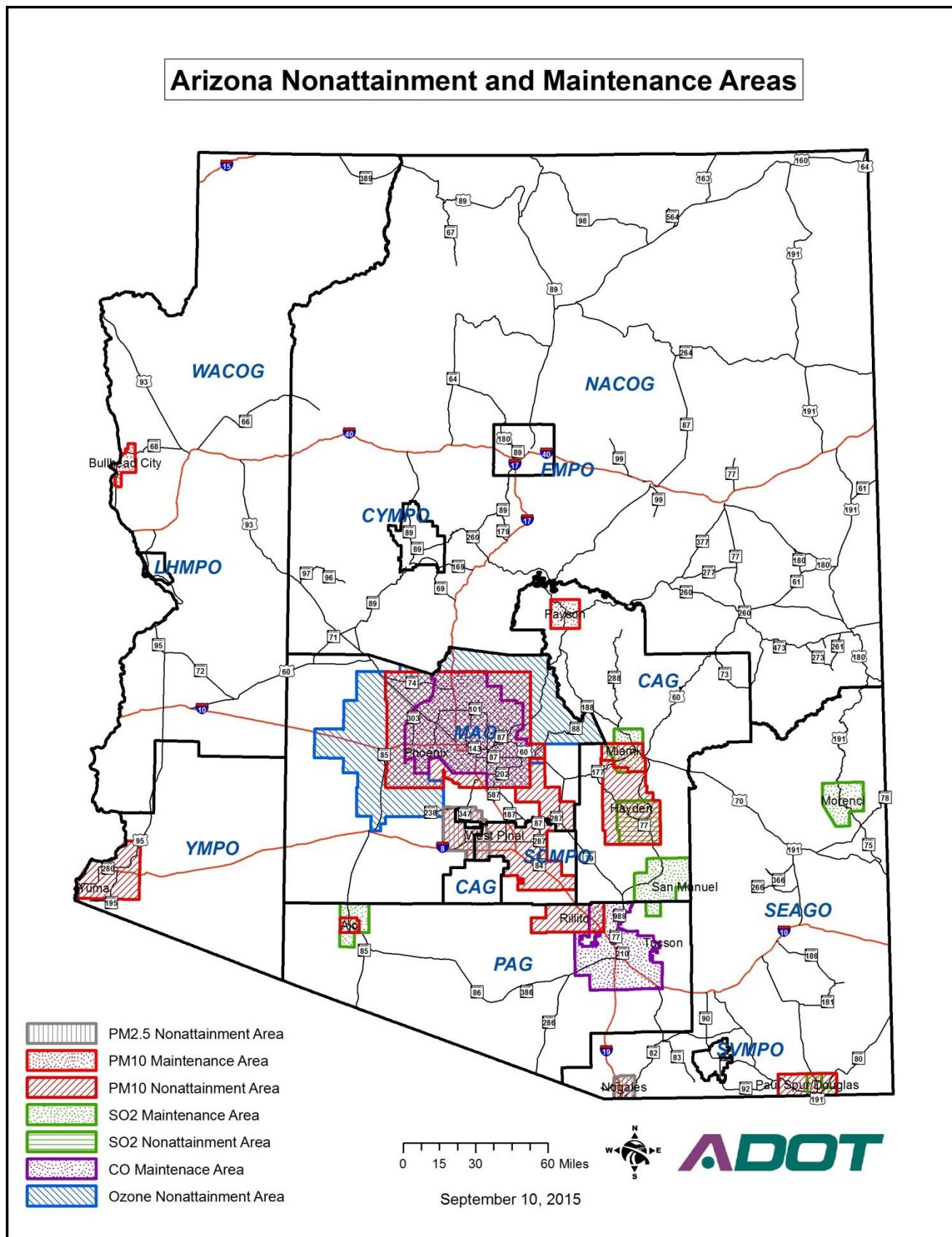


Table A1- 1: Arizona Nonattainment and Maintenance Areas and Current SIP Status by Pollutant

Pollutant	Area	Designation	County	MPO / COG Area	Current SIP Status	Motor Vehicle Emissions Budgets (MVEBs)	Notes (as of May , 2015)
Carbon Monoxide (CO)	Phoenix-Mesa, AZ	Maintenance	Maricopa (P)	MAG	<a href="#">2003 Maintenance Plan</a> Approval Effective 4/8/2005 <a href="#">70 FR 11553</a>	2006 and 2015 budget years Adequacy Effective 10/14/2013 <a href="#">68 FR 55950</a>	<a href="#">Draft 2013 Maintenance Plan</a> submitted in January 2013 with MVEB budget years of 2006, 2015 and 2025. Awaiting EPA approval.
	Tucson, AZ	Maintenance	Pima (P)	PAG	<a href="#">Second 10-Year LMP</a> Approval Effective 1/20/2010 <a href="#">74 FR 67819</a>	Budgets no longer required.	Regional conformity no longer required. Consultation, TCM and hot spot requirements still apply.
8 -Hour Ozone 1997 & 2008 Standards	Phoenix-Mesa, AZ	Marginal	Maricopa (P) Pinal (P)	MAG CAG	<a href="#">2009 SIP (1997 std.)</a> Attainment Finding & Approval Effective 10/17/2014 <a href="#">79 FR 55645</a>	2008 budget year (1997 std.) Adequacy Effective 11/9/2007 <a href="#">72 FR 60666</a> & 2014 MVEBs are in effect.	<a href="#">2009 Maintenance Plan</a> submission is pending EPA approval (1997 std.) 2008 Standard – MAG submitted 2014 SIP in <a href="#">June 2015</a> EPA didn't act on plan due to litigation on implementation of the standard for marginal areas. 1997 Standard - <a href="#">2007 SIP (1997 std.)</a> Approval Effective 7/13/2012 <a href="#">77 FR 35285</a> 1-Hour Standard - Approval effective 6/14/05 ( <a href="#">70FR34362</a> ) 2014 MVEB: 43.8 metric tons per day (mtpd) of VOC and 101.8 (mtpd) of NOX.”
2006 Particulate Matter (PM <sub>2.5</sub> )	Nogales, AZ	Nonattainment	Santa Cruz (P)	SEAGO	Attainment Finding Effective 2/6/2013 <a href="#">78 FR 887</a>	Budgets pending.	Area remains nonattainment until a Maintenance Plan is submitted and approved. Conformity still applies. 2/9/15 EPA finalized and approved the PM2.5 Emissions Inventory submitted per the clean data requirement but did not act on establishing a MVEB ( <a href="#">80 FR 6907</a> ).
	West Central Pinal, AZ	Nonattainment	Pinal (P)	CAG	Attainment Finding Effective 10/4/2013 <a href="#">78 FR 54394</a>	Budgets pending.	Effective date of designation 3/7/2011 ( <a href="#">76 FR 6056</a> ). Conformity applies as of 3/7/2012. SIP due by 3/7/2014, this date was waived with the clean data finding. Area remains nonattainment until a Maintenance Plan is submitted and approved. Conformity still applies.
Particulate Matter (PM <sub>10</sub> )	Ajo (Pima County), AZ	Moderate	Pima (P)	PAG	Attainment Finding Effective 4/10/2006 <a href="#">71 FR 6352</a>	Budgets pending.	Area remains nonattainment until a Maintenance Plan is submitted and approved. Awaiting EPA direction. Conformity still applies.
	Hayden AZ	Moderate	Gila (P) Pinal (P)	CAG	Attainment Finding Effective 2/10/2011 <a href="#">76 FR 1532</a>	Budgets pending.	Effective on 5/29/2007 ( <a href="#">72 FR 14422</a> ), EPA approved the boundary redesignations of the Hayden/Miami PM10 nonattainment area into two separated areas. EPA also found the area was no longer attaining based on 2007-2009 data ( <a href="#">76 FR 1532</a> ). Conformity still applies.
	Miami, AZ	Moderate	Pinal (P)	CAG	<a href="#">2009 LMP</a> Submitted July 2008 Pending EPA Approval	LMP approval pending.	EPA issued an attainment finding effective on 5/29/2007 ( <a href="#">72 FR 14422</a> ). In the same announcement, EPA also approved the boundary redesignations of the Hayden/Miami PM10 nonattainment area into two separate areas. Area remains nonattainment until EPA approves the LMP. Conformity still applies.
	Mohave, AZ (Bullhead City)	Maintenance	Mohave (P)	WACOG	<a href="#">2002 LMP</a> Approval Effective 8/26/2002 <a href="#">79 FR 15227</a>	Budgets no longer required.	Regional conformity no longer required. Consultation, TCM and hot spot requirements still apply. <a href="#">2012 LMP</a> submitted in May 2012, still pending EPA action.
	Nogales, AZ	Moderate	Santa Cruz (P)	SEAGO	<a href="#">2012 SIP</a> Approval Effective 10/25/2012 <a href="#">77 FR 58962</a>	2011 MVEB Adequacy Effective 10/25/2012 <a href="#">77 FR 58962</a>	EPA approved the plan element demonstrating that the Nogales nonattainment area is attaining the NAAQS for PM10, but for international emissions sources in Nogales, Mexico. 2011 MVEB is 1,274.3 tons per year.
	Paul Spur/Douglas (Cochise County), AZ	Moderate	Cochise (P)	SEAGO	Attainment finding Effective 9/4/2012 <a href="#">77 FR 45965</a>	Budgets pending.	Area remains nonattainment until a Maintenance Plan is submitted and approved. Maintenance Plan under development. Conformity still applies.
	Phoenix-Mesa, AZ	Serious	Maricopa (P) Pinal (P)	MAG CAG	<a href="#">2012 5% Plan</a> Approval Effective 7/10/2014 <a href="#">79 FR 33107</a>	2012 MVEB is 54.9 metric tons per day of PM–10. Adequacy Effective 12/20/13 <a href="#">78 FR 73188</a>	The 2007 5% plan was withdrawn by ADEQ in Jan. 2011 triggering EPA to issue a failure to submit finding effective 2/14/2011 ( <a href="#">76 FR 8300</a> ). ADEQ submitted two 2012 5% plans, one for <a href="#">Maricopa</a> and one for <a href="#">Pinal</a> on May 25, 2012. 2006 budget year, Adequacy Effective 8/26/2002 <a href="#">67 FR 48718</a> <a href="#">1999 Serious Action Plan (ES)</a> Approval Effective 8/26/2002 <a href="#">67 FR 48717</a>
	Payson, AZ	Maintenance	Gila (P)	CAG	<a href="#">2012 LMP</a> Approval Effective 05/19/2014 <a href="#">79 FR 15227</a>	Budgets no longer required.	Regional conformity no longer required. First Limited Maintenance Plan <a href="#">2002 LMP</a> Approval Effective 8/26/2002 <a href="#">67 FR 43013</a> Consultation, TCM and hot spot requirements still apply.
	Rillito, AZ	Moderate	Pima (P)	PAG	<a href="#">2009 LMP</a> Submitted July 2008	LMP approval pending.	EPA did not act on the original SIP submitted in 1994. EPA issued an attainment finding effective on 10/10/2006 ( <a href="#">71 FR 44920</a> ). Area remains nonattainment until the Maintenance Plan is approved. Conformity still applies.
	West Pinal, AZ	Moderate	Pinal (P)	CAG & MAG	Designation of Nonattainment Effective 07/2/2012 <a href="#">77 FR 32024</a>	Budgets pending.	SIP due date of 1/02/2014, conformity applies, due by 7/3/2013 and performed by MAG. SIP status unknown.
	Yuma, AZ	Moderate	Yuma (P)	YMPO WACOG	<a href="#">2006 Maintenance Plan</a> Submitted August 2006	Adequacy Effective 6/27/2007 <a href="#">72 FR 32295</a>	Area remains nonattainment until the Maintenance Plan is approved. Conformity applies. MVEB: 1999, 2006 and 2016 budget years.

Conformity does not apply for these areas and provided for informational purposes only.							
2008 Lead (Pb)	Hayden, AZ	Nonattainment	Gila/Pinal (P)	CAG	Designation Effective 10/03/14 <a href="#">79 FR 52205</a>		SIPs due 04/03/16
1971 Sulfur Dioxide (SO2)	Ajo, AZ	Maintenance	Pima (P)	PAG	Redesignation Effective 01/02/2004 <a href="#">68 FR 62243</a>		EPA provided <a href="#">TSD</a> - No information on status of SIP update.
	Douglas, AZ	Maintenance	Cochise (P)	SEAGO	Redesignation Effective 03/30/2006 <a href="#">71 FR 9941</a>		No information on status of SIP update.
	Hayden, AZ	Nonattainment	Gila/Pinal (P)	CAG	See 2010 SO2 Standard		Hayden Sulfur Dioxide (SO2) Maintenance Plan – <a href="#">June 27, 2002</a> . No action from EPA.
	Miami, AZ	Maintenance	Gila (P)	CAG	Redesignation Effective 03/26/2007 <a href="#">72 FR 3061</a>		No information on status of SIP update.
	Morenci, AZ	Maintenance	Greenlee (P)	SEAGO	Redesignation Effective 06/25/2004 <a href="#">69 FR 22447</a>		No information on status of SIP update
	San Manuel, AZ	Maintenance	Pinal/Pima (P)	CAG & PAG	Redesignation Effective 03/18/2008 <a href="#">73 FR 3396</a>		No information on status of SIP update
2010 Sulfur Dioxide (SO2)	Hayden, AZ	Nonattainment	Gila/Pinal (P)	CAG	Designation Effective 10/04/2013 <a href="#">78 FR 47192</a>		SIPs due 04/06/2015
	Miami, AZ	Nonattainment	Gila (P)	CAG	Designation Effective 10/04/2013 <a href="#">78 FR 47192</a>		SIPs due 04/06/2015

## APPENDIX A-2

---

- MPO / COG Nonattainment and Maintenance Area Maps
  - MPO / COG Nonattainment and Maintenance Areas and Current SIP Status Tables
-



Figure A2- 1: CAG Nonattainment and Maintenance Areas Map

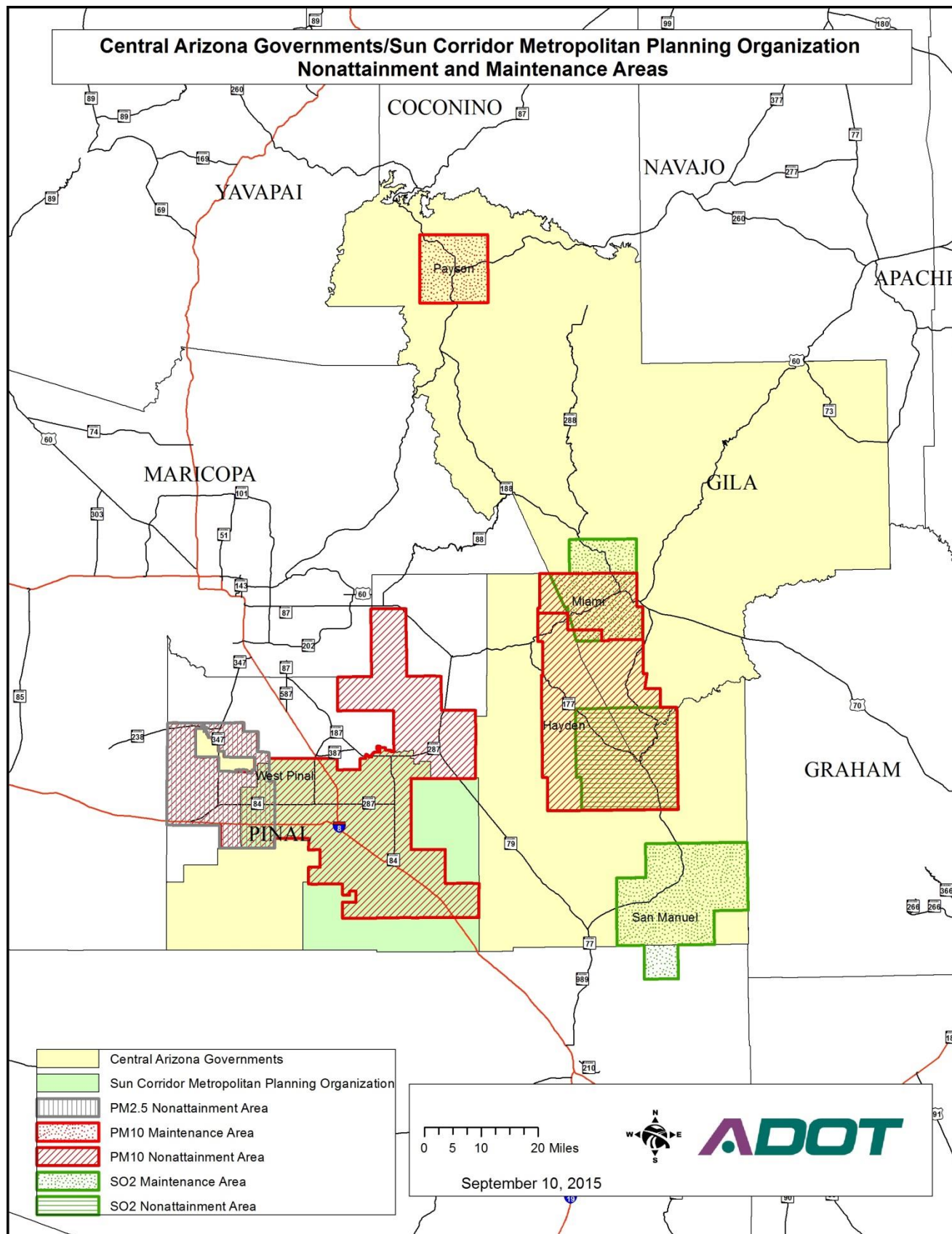


Table A2- 1: CAG Nonattainment and Maintenance Areas and Current SIP Status by Pollutant

County	Current SIP Status <sup>1</sup>	Notes (as of February 1, 2013)
<b>Phoenix-Mesa, AZ 8-Hour Ozone 1997 &amp; 2008 Marginal Nonattainment Area</b>		
Pinal (P) <sup>2</sup>	<a href="#">2007 SIP (1997 std.)</a> Approval Effective 7/13/2012 <a href="#">77 FR 35285</a>	<a href="#">2009 Maintenance Plan</a> submission is pending EPA approval (1997 std.). 2008 Standard – Conformity applies 7/20/2013; SIPs due 7/20/2015.
<b>West Central Pinal, AZ 2006 PM<sub>2.5</sub> Nonattainment Area</b>		
Pinal (P)	Attainment Finding Effective 10/4/2013 <a href="#">78 FR 54394</a>	Effective date of designation 3/7/2011 ( <a href="#">76 FR 6056</a> ). Conformity applies as of 3/7/2012. SIP due by 3/7/2014. Area remains nonattainment until a Maintenance Plan is submitted and approved. Regional conformity still applies.
<b>Hayden, AZ PM<sub>10</sub> Moderate Nonattainment Area</b>		
Gila (P) Pinal (P)	Attainment Finding Effective 2/10/2011 <a href="#">76 FR 1532</a>	Effective on 5/29/2007 ( <a href="#">72 FR 14422</a> ), EPA approved the boundary redesignations of the Hayden/Miami PM <sub>10</sub> nonattainment area into two separated areas. EPA also found the area was no longer attaining based on 2007-2009 data ( <a href="#">76 FR 1532</a> ). The area remains nonattainment until a Maintenance Plan is submitted and approved or further EPA direction is provided. Regional conformity still applies.
<b>Miami, AZ PM<sub>10</sub> Moderate Nonattainment Area</b>		
Pinal (P)	<a href="#">2009 LMP</a> Submitted July 2008 Pending EPA Approval	EPA issued an attainment finding effective on 5/29/2007 ( <a href="#">72 FR 14422</a> ). In the same announcement, EPA also approved the boundary redesignations of the Hayden/Miami PM <sub>10</sub> nonattainment area into two separate areas. Area remains nonattainment until EPA approves the LMP. Regional conformity still applies.
<b>Phoenix-Mesa, AZ PM<sub>10</sub> Serious Nonattainment Area</b>		
Pinal (P) <sup>2</sup>	<a href="#">1999 Serious Action Plan (ES)</a> Approval Effective 8/26/2002 <a href="#">67 FR 48718</a>	The 2007 5% plan was withdrawn by ADEQ in Jan. 2011 triggering EPA to issue a failure to submit finding effective 2/14/2011 ( <a href="#">76 FR 8300</a> ). ADEQ submitted two 2012 5% plans, one for <a href="#">Maricopa</a> and one for <a href="#">Pinal</a> on May 25, 2012. EPA approval is required before Feb. 14, 2013 to avoid the imposition of a federal implementation plan and highway funding sanctions.
<b>Payson, AZ PM<sub>10</sub> Maintenance Area</b>		
Gila (P)	<a href="#">2002 LMP</a> Approval Effective 8/26/2002 <a href="#">67 FR 43013</a>	Regional conformity no longer required. Second 10-year Limited Maintenance Plan submitted to EPA in Jan. 2012 and is pending EPA action. Consultation, TCM and hot spot requirements still apply.
<b>West Pinal, AZ PM<sub>10</sub> Moderate Nonattainment Area</b>		
Pinal (P) <sup>2</sup>	SIP due by 1/3/2014.	EPA redesignated the area as nonattainment effective 7/2/2012 ( <a href="#">77 FR 32024</a> ). Conformity is due by 7/3/2013.

(P) = Partial

1. For information regarding Federal Register documentation related to motor vehicle emissions budgets (MVEBs) please see Table A1-1.

2. These areas include the MAG MPO; please refer to Figure A2-2 and Table A2-2 for MAG-specific information.



Figure A2- 2: MAG Nonattainment and Maintenance Areas Map

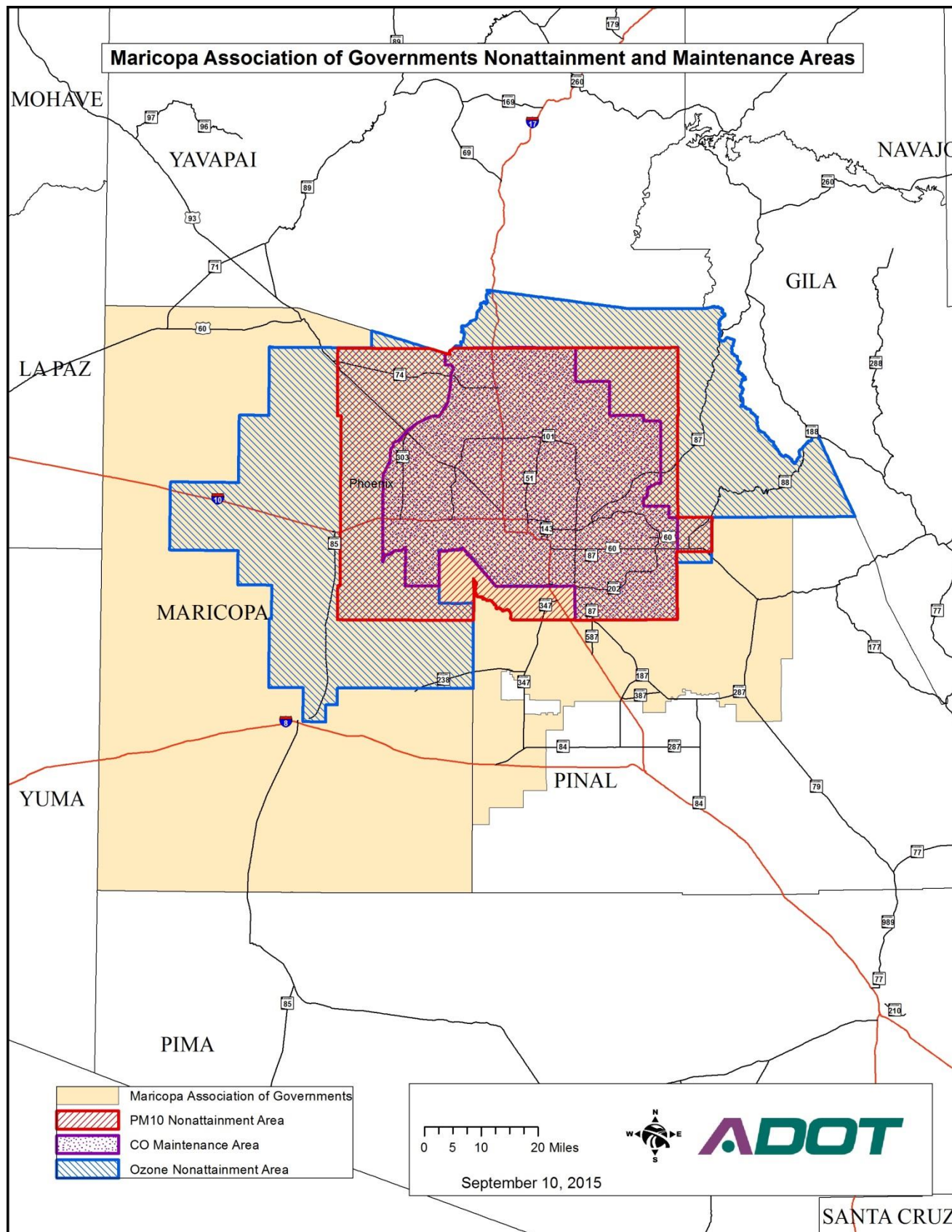


Table A2- 2: MAG Nonattainment and Maintenance Areas and Current SIP Status by Pollutant

County	Current SIP Status <sup>1</sup>	Notes (as of February 1, 2013)
<b>Phoenix-Mesa, AZ CO Maintenance Area</b>		
Maricopa (P)	<a href="#">2003 Maintenance Plan</a> Approval Effective 4/8/2005 <a href="#">70 FR 11553</a>	<a href="#">Draft 2013 Maintenance Plan</a> submitted in January 2013 with MVEB budget years of 2006, 2015 and 2025. Awaiting EPA approval.
<b>Phoenix-Mesa, AZ 8-Hour Ozone 1997 &amp; 2008 Marginal Nonattainment Area</b>		
Maricopa (P) <sup>2</sup>	<a href="#">2007 SIP (1997 std.)</a> Approval Effective 7/13/2012 <a href="#">77 FR 35285</a>	<a href="#">2009 Maintenance Plan</a> submission is pending EPA approval (1997 std.). 2008 Standard – Conformity applies 7/20/2013; SIPs due 7/20/2015.
<b>West Pinal, AZ PM<sub>10</sub> Moderate Nonattainment Area</b>		
Maricopa (P) <sup>2</sup>	SIP due by 1/3/2014.	EPA redesignated the area as nonattainment effective 7/2/2012 ( <a href="#">77 FR 32024</a> ). Conformity is due by 7/3/2013.
<b>Phoenix-Mesa, AZ PM<sub>10</sub> Serious Nonattainment Area</b>		
Maricopa (P) <sup>2</sup>	<a href="#">1999 Serious Action Plan (ES)</a> Approval Effective 8/26/2002 <a href="#">67 FR 48718</a>	The 2007 5% plan was withdrawn by ADEQ in Jan. 2011 triggering EPA to issue a failure to submit finding effective 2/14/2011 ( <a href="#">76 FR 8300</a> ). ADEQ submitted two 2012 5% plans, one for <a href="#">Maricopa</a> and one for <a href="#">Pinal</a> on May 25, 2012. EPA approval is required before Feb. 14, 2013 to avoid the imposition of a federal implementation plan and highway funding sanctions.

(P) = Partial

1. For information regarding Federal Register documentation related to motor vehicle emissions budgets (MVEBs) please see Table A1-1.

2. These areas include the CAG MPO; please refer to Figure A2-1 and Table A2-1 for CAG-specific information.

Figure A2- 3: PAG Nonattainment and Maintenance Areas Map

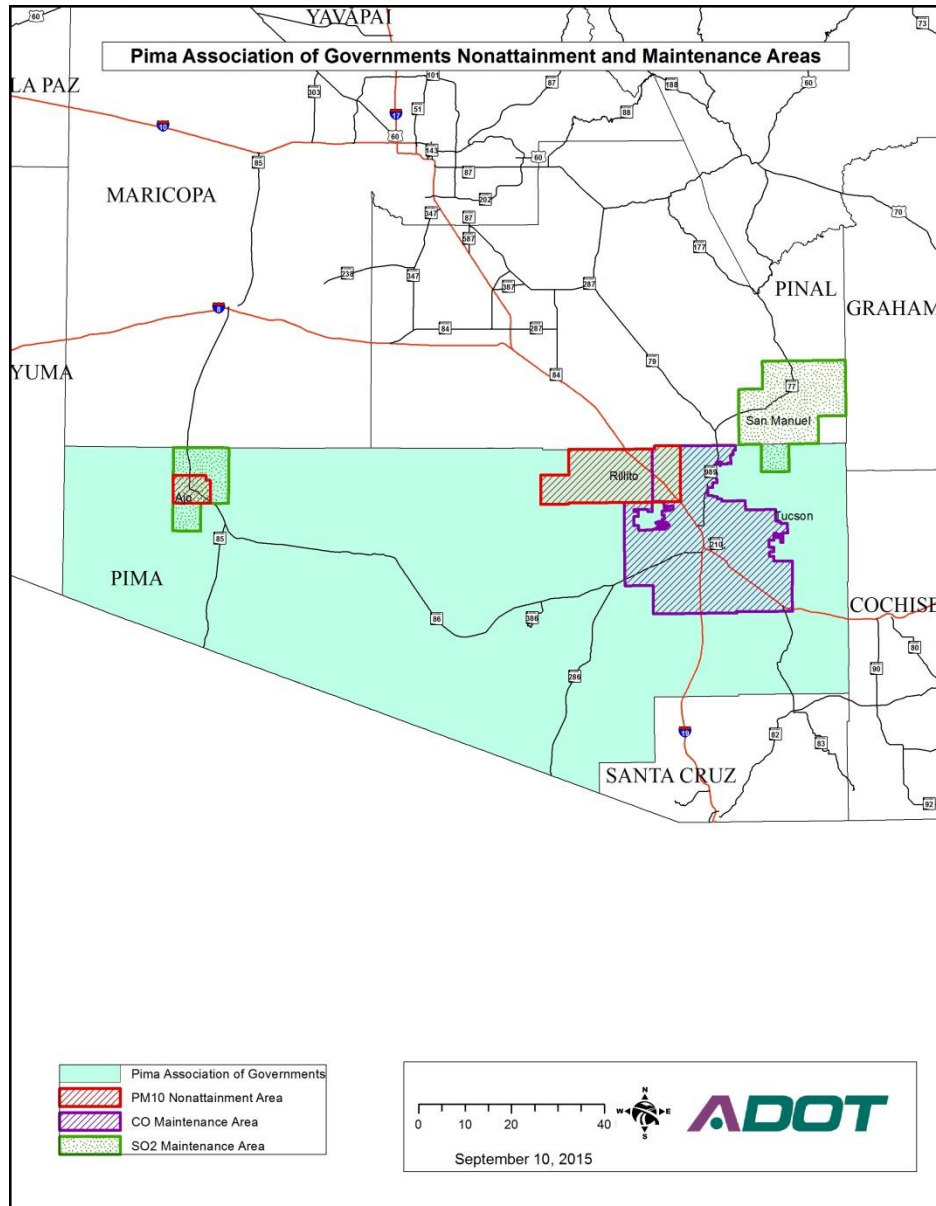


Table A2- 3: PAG Nonattainment and Maintenance Areas and Current SIP Status by Pollutant

County	Current SIP Status <sup>1</sup>	Notes (as of February 1, 2013)
<b>Tucson, AZ CO Maintenance Area</b>		
Pima (P)	<a href="#">Second 10-Year LMP</a> Approval Effective 1/20/2010 <a href="#">74 FR 67819</a>	Regional conformity no longer required. Consultation, TCM and hot spot requirements still apply.
<b>Ajo (Pima County), AZ PM<sub>10</sub> Moderate Nonattainment Area</b>		
Pima (P)	Attainment Finding Effective 4/10/2006 <a href="#">71 FR 6352</a>	Area remains nonattainment until a Maintenance Plan is submitted and approved. Awaiting EPA direction. Regional conformity still applies.
<b>Rillito, AZ PM<sub>10</sub> Moderate Nonattainment Area</b>		
Pima (P)	<a href="#">2009 LMP</a> Submitted July 2008 Pending EPA Approval	EPA did not act on the original SIP submitted in 1994. EPA issued an attainment finding effective on 10/10/2006 ( <a href="#">71 FR 44920</a> ). Area remains nonattainment until the Maintenance Plan is approved. Regional conformity, consultation and hot spot requirements still apply.

(P) = Partial

1. For information regarding Federal Register documentation related to motor vehicle emissions budgets (MVEBs) please see Table A1-1.

Figure A2- 4: SEAGO Nonattainment and Maintenance Areas Map

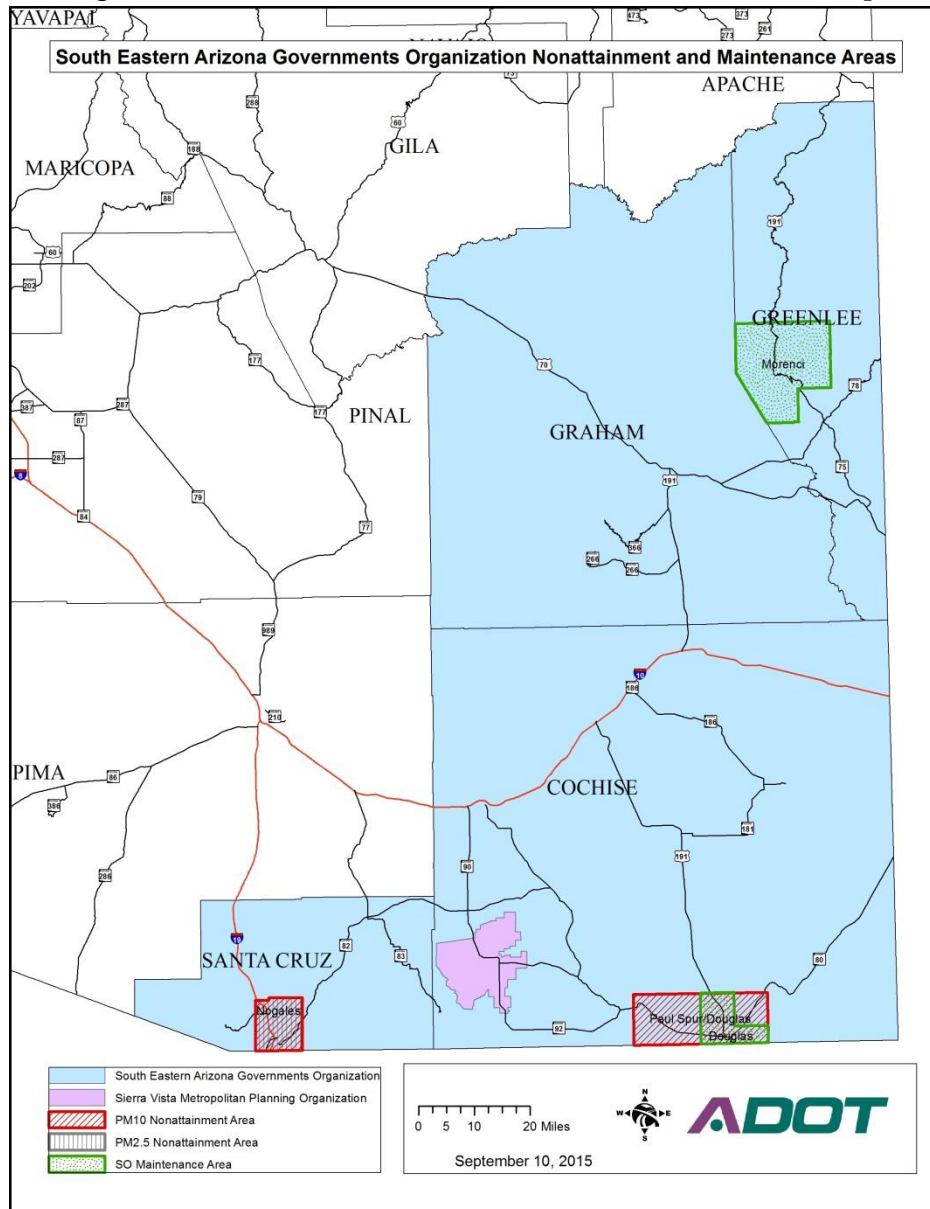


Table A2- 4: SEAGO Nonattainment and Maintenance Areas and Current SIP Status by Pollutant

County	Current SIP Status <sup>1</sup>	Notes (as of February 1, 2013)
<b>Nogales, AZ PM<sub>2.5</sub> Nonattainment Area</b>		
Santa Cruz (P)	Attainment Finding Effective 2/6/2013 <a href="#">78 FR 887</a>	Area remains nonattainment until a Maintenance Plan is submitted and approved. Regional conformity still applies.
<b>Nogales, AZ PM<sub>10</sub> Moderate Nonattainment Area</b>		
Santa Cruz (P)	<a href="#">2012 SIP</a> Approval Effective 10/25/2012 <a href="#">77 FR 58962</a>	EPA approved the plan element demonstrating that the Nogales nonattainment area is attaining the NAAQS for PM <sub>10</sub> , but for international emissions sources in Nogales, Mexico.
<b>Paul Spur/Douglas (Cochise County), AZ PM<sub>10</sub> Moderate Nonattainment Area</b>		
Cochise (P)	Attainment finding Effective 9/4/2012 <a href="#">77 FR 45965</a>	Area remains nonattainment until a Maintenance Plan is submitted and approved. Maintenance Plan under development. Regional conformity still applies.

(P) = Partial

1. For information regarding Federal Register documentation related to motor vehicle emissions budgets (MVEBs) please see Table A1-1.



Figure A2- 5: WACOG Nonattainment and Maintenance Areas Map

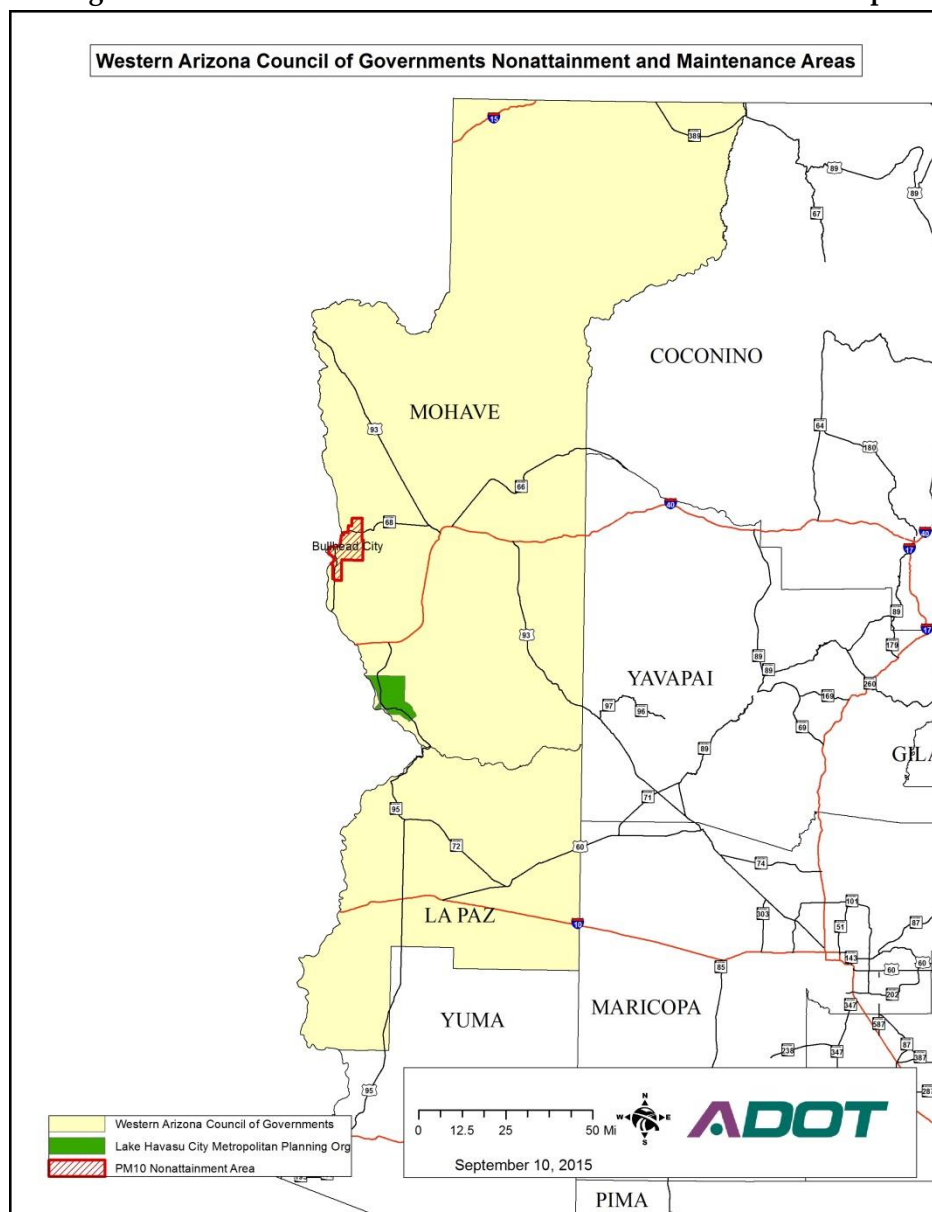


Table A2- 5: WACOG<sup>1</sup> Nonattainment and Maintenance Areas and Current SIP Status by Pollutant

County	Current SIP Status <sup>2</sup>	Notes (as of February 1, 2013)
<b>Mohave, AZ (Bullhead City) PM<sub>10</sub> Maintenance Area</b>		
Mohave (P)	<a href="#">2002 LMP</a> Approval Effective 8/26/2002 <a href="#">67 FR 43020</a>	Regional conformity no longer required. Consultation, TCM and hot spot requirements still apply. <a href="#">2012 LMP</a> submitted in May 2012, still pending EPA action.

(P) = Partial

1. YMPO is also a member of WACOG. Please see Figure A2-6 and Table A2-6.

2. For information regarding Federal Register documentation related to motor vehicle emissions budgets (MVEBs) please see Table A1-1.



Figure A2- 6: YMPO Nonattainment and Maintenance Areas Map

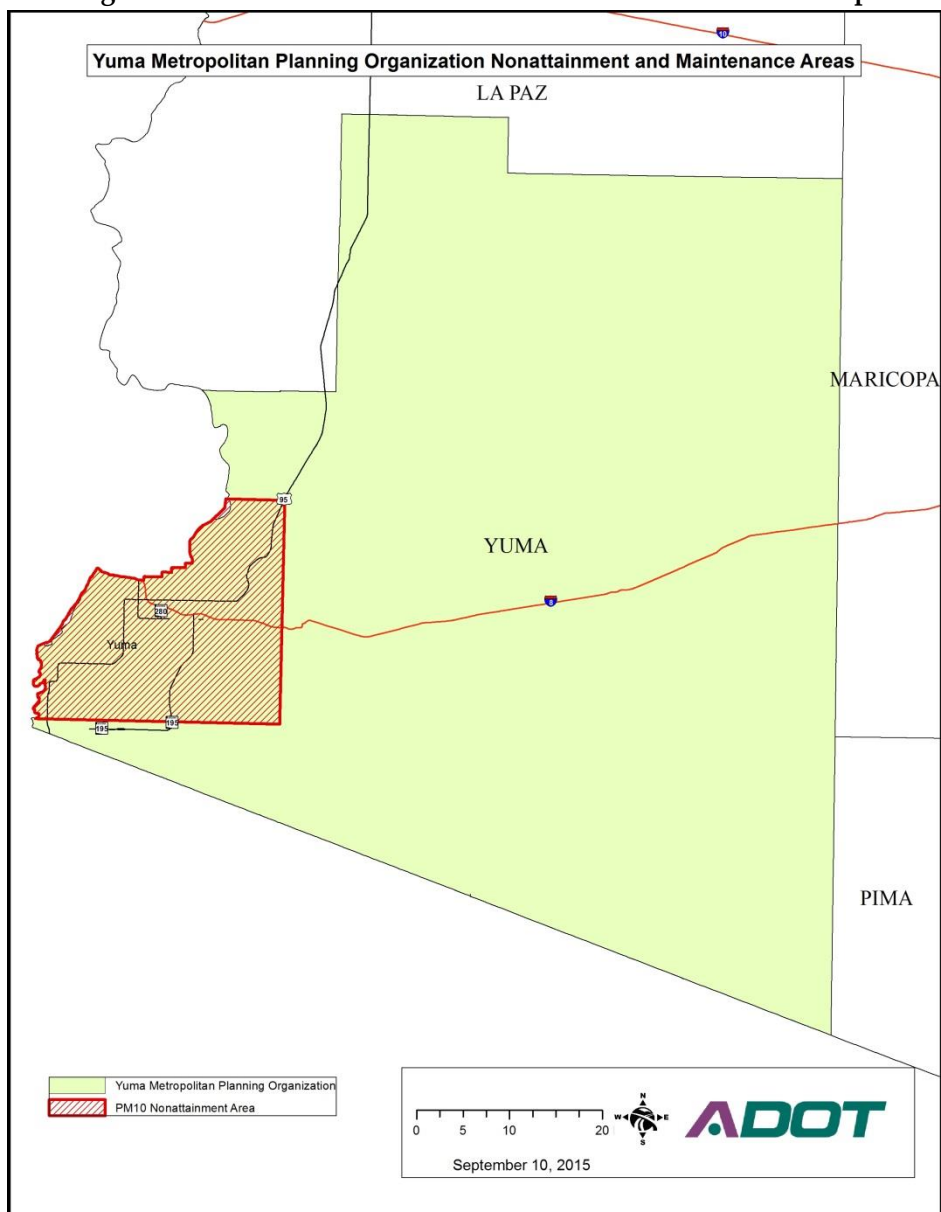


Table A2- 6: YMPO<sup>1</sup> Nonattainment and Maintenance Areas and Current SIP Status by Pollutant

County	Current SIP Status <sup>2</sup>	Notes (as of February 1, 2013)
<b>Yuma, AZ PM<sub>10</sub> Moderate Nonattainment Area</b>		
Yuma (P)	<a href="#">2006 Maintenance Plan</a> Submitted August 2006 Pending EPA Approval	Area remains nonattainment until the Maintenance Plan is approved. Regional conformity, consultation and hot spot requirements still apply.

(P) = Partial

1. YMPO is also a member of WACOG. Please see Figure A2-5 and Table A2-5.

2. For information regarding Federal Register documentation related to motor vehicle emissions budgets (MVEBs) please see Table A1-1.

## APPENDIX A-3

---

### ➤ Nonattainment and Maintenance Area Maps by Pollutant

---

Figure A3- 1: Arizona CO Maintenance Areas

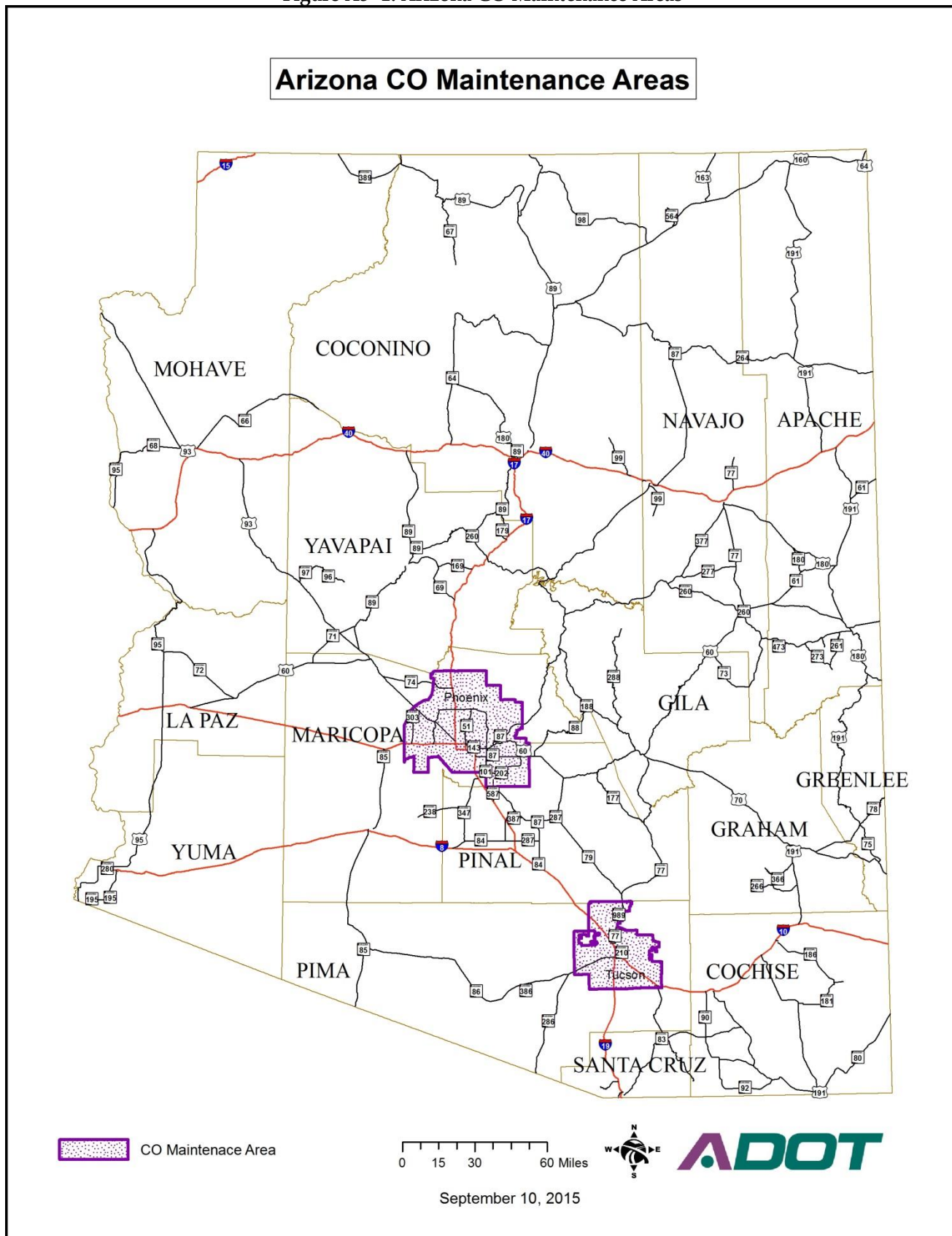


Figure A3- 2: Arizona Ozone Nonattainment Area

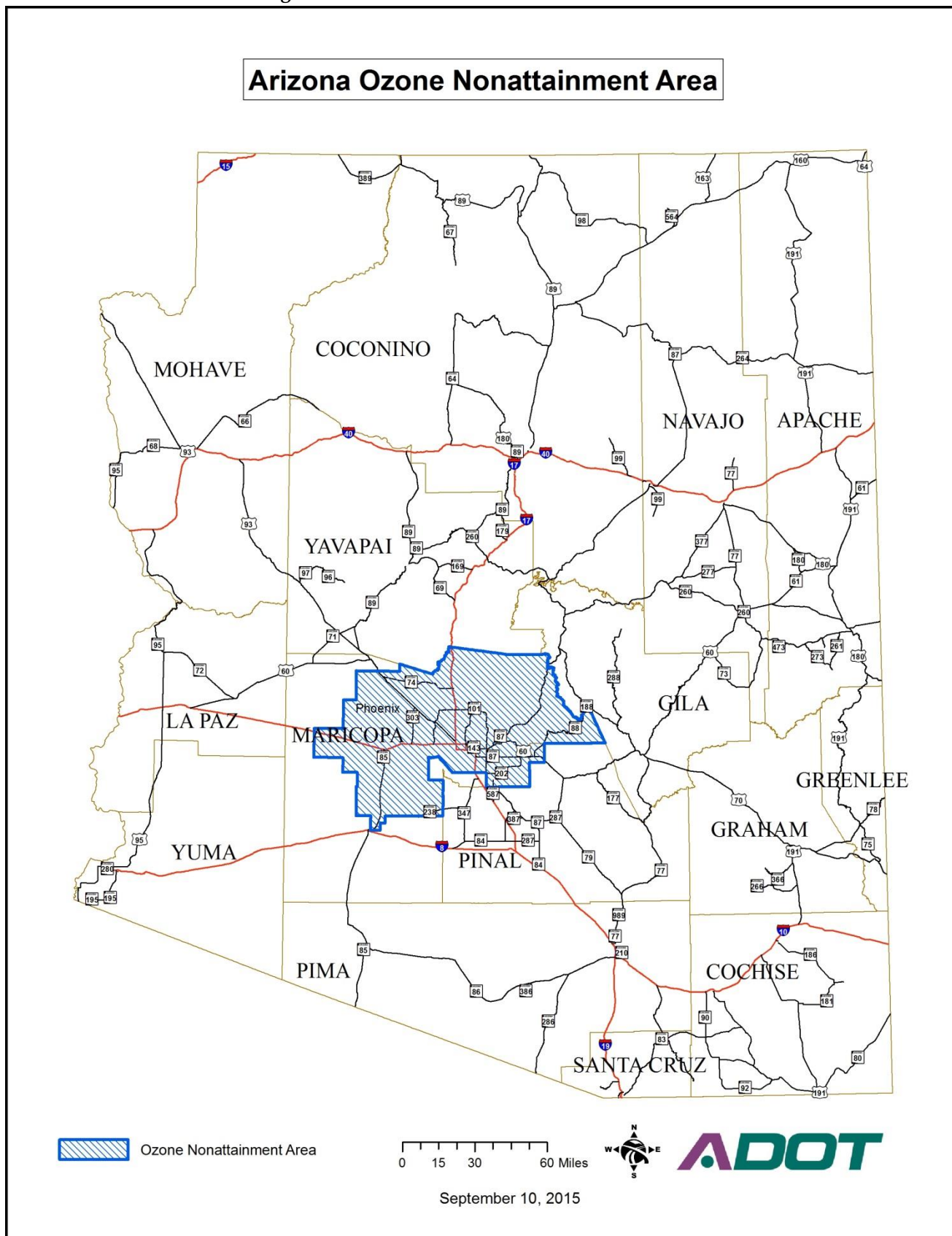


Figure A3- 3: Arizona PM<sub>2.5</sub> Nonattainment Areas

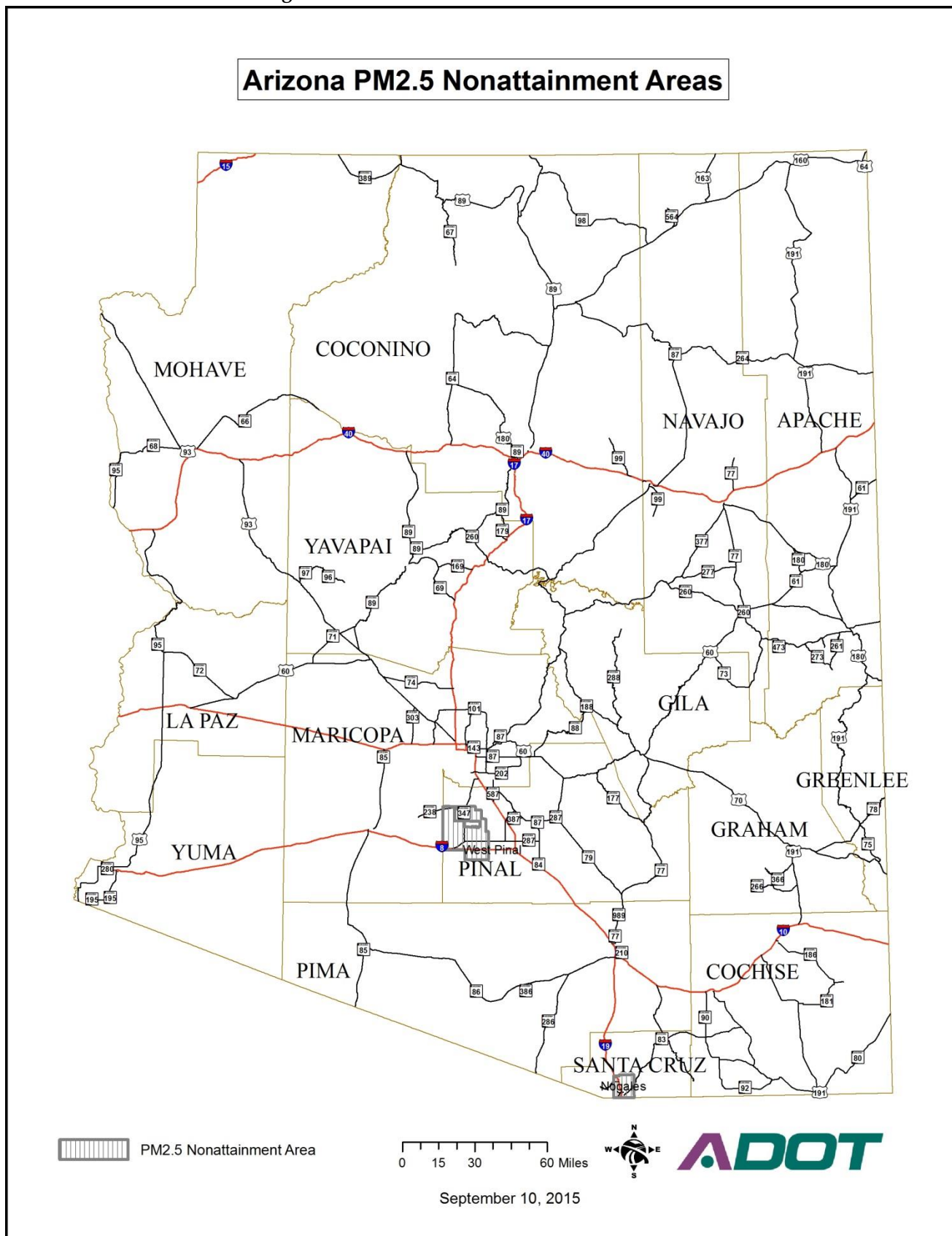




Figure A3- 4: Arizona PM<sub>10</sub> Nonattainment and Maintenance Areas

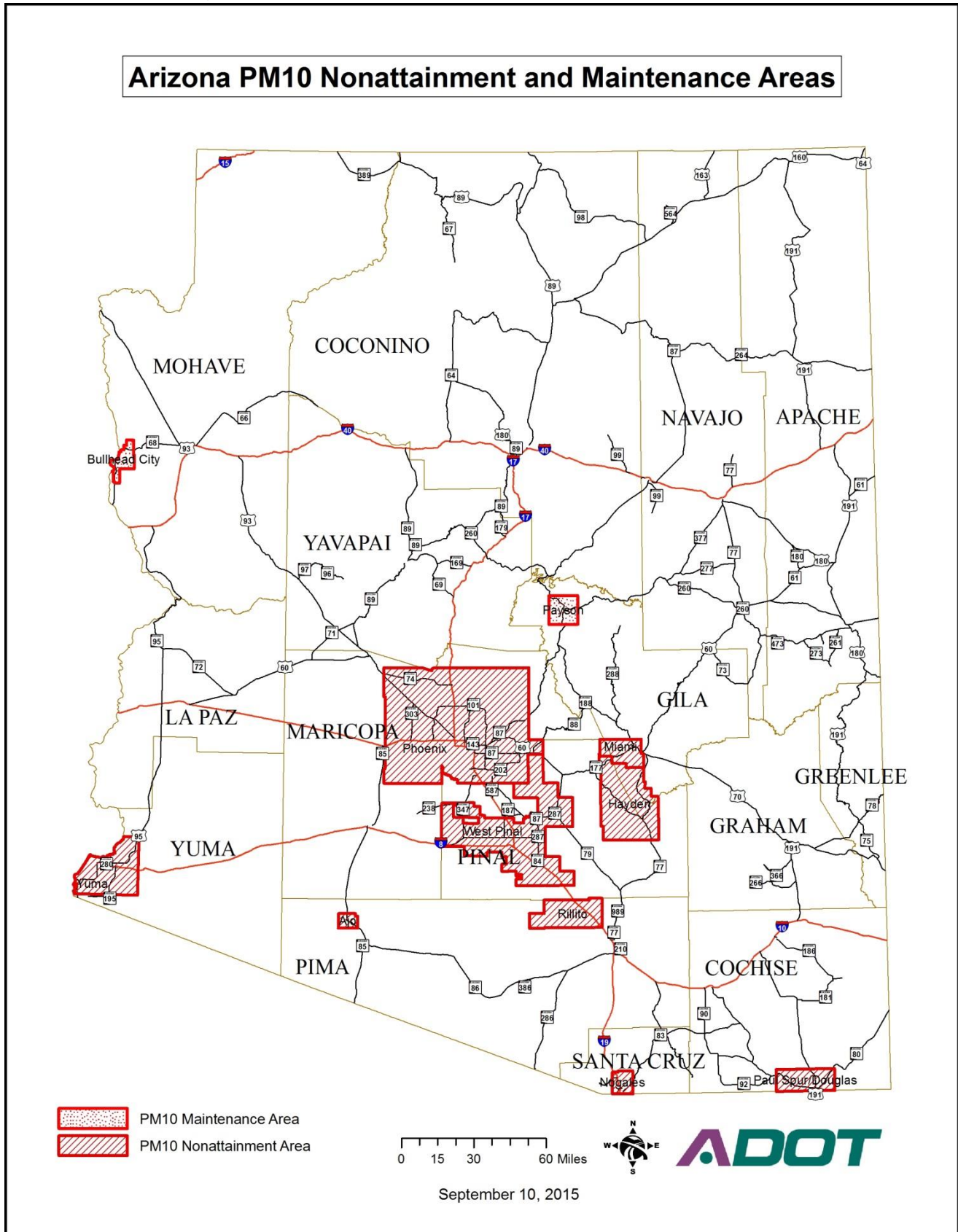


Figure A3- 5: Arizona SO<sub>2</sub> Nonattainment and Maintenance Areas

