

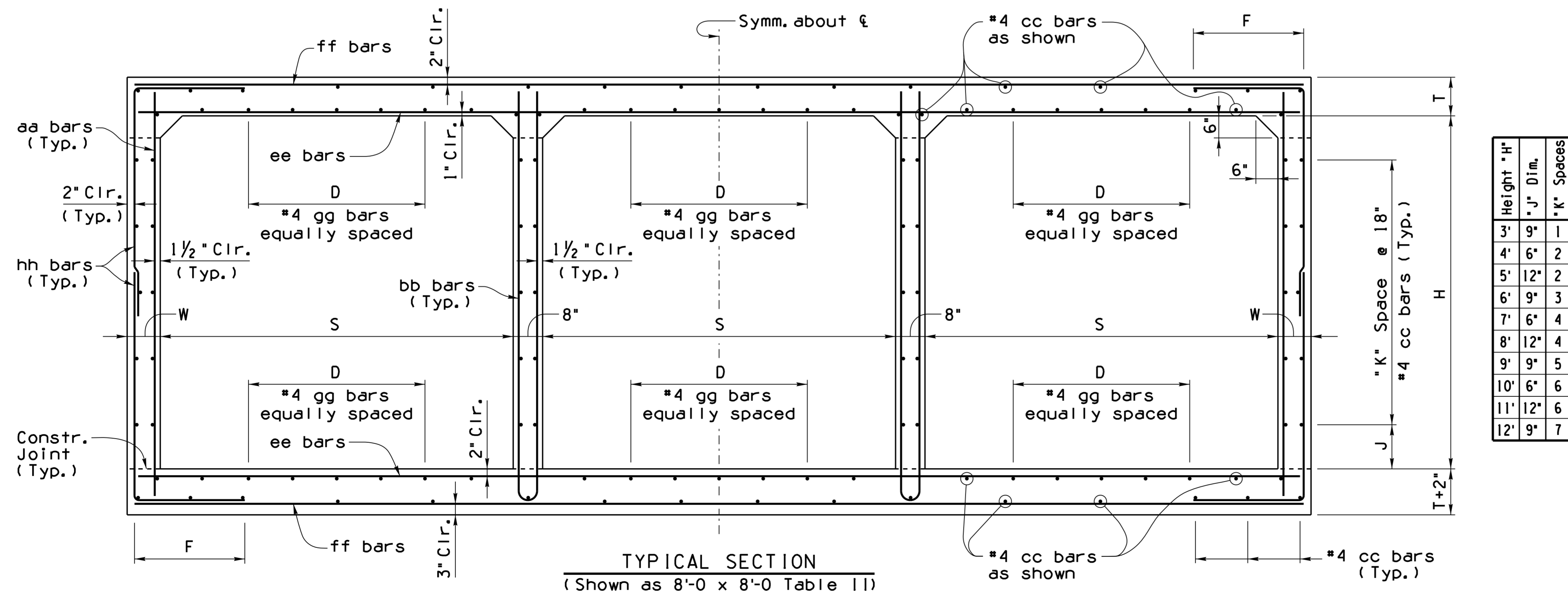
Note to Designer:
The information presented in this Standard Detail has been prepared in accordance with recognized engineering principles and is for general use. It should not be used for specific application without competent professional examination and verification of its suitability and applicability by a licensed professional engineer. Contents within the inner border line shall not be altered.

NO.	DESCRIPTION OF REVISIONS	DATE	MADE BY
1	Original Issue	2-12	S.J.H.
2	Added 3'-4.5' height for existing box extensions only	5-15	D.B.B.
3			
4			

Span "S"	Height "H"	Top Slab "T"	Walls "W"	aa		bb		cc		ee		ff		gg		hh		F				
				Bar Size	Spacing	Bar Size	Spacing	Number	Bar Size	Spacing	Length	Bar Size	Spacing	Length	Number	D	Bar Size		Spacing	Length		
6'	3'	9 1/2"	8"	5	12"	4'-4"	5	12"	8'-9"	68	5	8"	20'-3"	5	8"	20'-3"	30	3'-0"	4	8"	5'-1"	2'-5"
	4'	9 1/2"	8"	5	12"	5'-4"	5	12"	10'-9"	76	5	8"	20'-3"	5	8"	20'-3"	30	3'-0"	4	8"	5'-7"	2'-5"
	5'	9 1/2"	8"	5	12"	6'-4"	5	12"	12'-9"	76	5	8"	20'-3"	5	8"	20'-3"	30	3'-0"	4	8"	6'-1"	2'-5"
	6'	9 1/2"	8"	5	12"	7'-4"	5	12"	14'-9"	84	5	8"	20'-3"	5	8"	20'-3"	30	3'-0"	4	8"	6'-7"	2'-5"
	7'	9 1/2"	8"	5	12"	8'-4"	5	12"	16'-9"	92	5	8"	20'-3"	5	8"	20'-3"	30	3'-0"	4	8"	7'-1"	2'-5"
8'	3'	9 1/2"	9"	5	12"	4'-4"	5	12"	8'-8"	68	5	7"	26'-5"	6	8"	26'-5"	36	4'-0"	5	8"	5'-6"	2'-6"
	4'	9 1/2"	9"	5	12"	5'-4"	5	12"	12'-8"	76	5	7"	26'-5"	6	8"	26'-5"	36	4'-0"	5	8"	6'-0"	2'-6"
	5'	9 1/2"	9"	5	12"	6'-4"	5	12"	12'-8"	76	5	7"	26'-5"	6	8"	26'-5"	36	4'-0"	5	8"	6'-6"	2'-6"
	6'	9 1/2"	9"	5	12"	7'-4"	5	12"	14'-8"	84	5	7"	26'-5"	6	8"	26'-5"	36	4'-0"	5	8"	7'-0"	2'-6"
	7'	9 1/2"	9"	5	12"	8'-4"	5	12"	16'-8"	92	5	7"	26'-5"	6	8"	26'-5"	36	4'-0"	5	8"	7'-5"	2'-6"
10'	3'	10 1/2"	11"	5	12"	4'-6"	5	12"	8'-11"	68	5	6"	32'-9"	6	6"	32'-9"	66	5'-0"	5	6"	5'-9"	2'-8"
	4'	10 1/2"	11"	5	12"	5'-6"	5	12"	10'-11"	76	5	6"	32'-9"	6	6"	32'-9"	66	5'-0"	5	6"	6'-3"	2'-8"
	5'	10 1/2"	11"	5	12"	6'-6"	5	12"	12'-11"	76	5	6"	32'-9"	6	6"	32'-9"	66	5'-0"	5	6"	6'-9"	2'-8"
	6'	10 1/2"	11"	5	12"	7'-6"	5	12"	14'-11"	84	5	6"	32'-9"	6	6"	32'-9"	66	5'-0"	5	6"	7'-3"	2'-8"
	7'	10 1/2"	11"	5	12"	8'-6"	5	12"	16'-11"	92	5	6"	32'-9"	6	6"	32'-9"	66	5'-0"	5	6"	7'-9"	2'-8"
12'	8'	12 1/2"	13"	5	12"	9'-10"	5	12"	18'-11"	92	5	6"	32'-9"	6	6"	32'-9"	66	5'-0"	5	6"	8'-3"	2'-8"
	9'	12 1/2"	13"	5	12"	10'-10"	5	12"	20'-11"	100	5	6"	32'-9"	6	6"	32'-9"	66	5'-0"	5	6"	8'-9"	2'-8"
	10'	12 1/2"	13"	5	12"	11'-6"	5	12"	22'-11"	108	5	6"	32'-9"	6	6"	32'-9"	66	5'-0"	5	6"	9'-3"	2'-8"
	11'	12 1/2"	13"	5	12"	12'-10"	5	12"	25'-7"	108	6	7"	39'-1"	7	7"	39'-1"	78	6'-0"	6	7"	10'-0"	2'-10"
	12'	12 1/2"	13"	5	12"	13'-10"	5	12"	27'-7"	116	6	7"	39'-1"	7	7"	39'-1"	78	6'-0"	6	7"	10'-6"	2'-10"

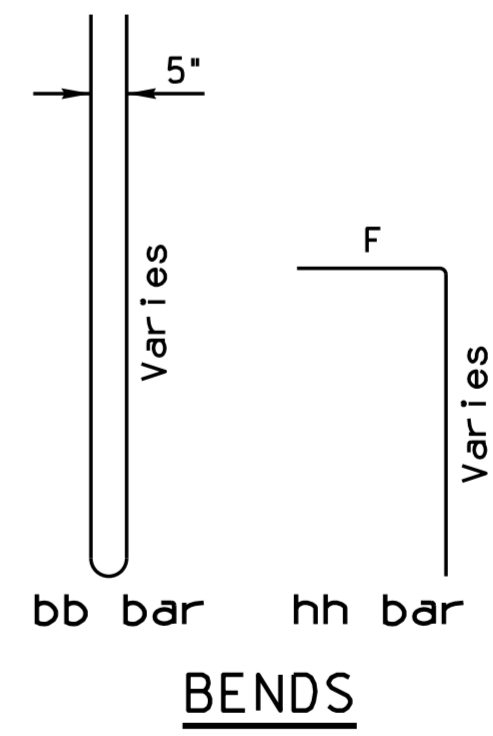
Span "S"	Height "H"	Top Slab "T"	Walls "W"	aa		bb		cc		ee		ff		gg		hh		F				
				Bar Size	Spacing	Bar Size	Spacing	Length	Bar Size	Spacing	Length	Bar Size	Spacing	Length	Bar Size	Spacing	Length		Bar Size	Spacing	Length	
6'	3'	8"	8"	5	12"	4'-1"	5	12"	8'-3"	68	5	8"	20'-3"	5	7"	20'-3"	24	3'-0"	4	7"	5'-0"	2'-5"
	4'	8"	8"	5	12"	5'-1"	5	12"	10'-3"	76	5	8"	20'-3"	5	7"	20'-3"	24	3'-0"	4	7"	5'-6"	2'-5"
	5'	8"	8"	5	12"	6'-1"	5	12"	12'-3"	76	5	8"	20'-3"	5	7"	20'-3"	24	3'-0"	4	7"	6'-0"	2'-5"
	6'	8"	8"	5	12"	7'-1"	5	12"	14'-3"	84	5	8"	20'-3"	5	7"	20'-3"	24	3'-0"	4	7"	6'-6"	2'-5"
	7'	8"	8"	5	12"	8'-1"	5	12"	16'-3"	92	5	8"	20'-3"	5	7"	20'-3"	24	3'-0"	4	7"	7'-0"	2'-5"
8'	3'	10 1/2"	9"	5	12"	4'-6"	5	12"	9'-1"	68	5	7"	26'-5"	6	7"	26'-5"	30	4'-0"	4	7"	5'-3"	2'-6"
	4'	10 1/2"	9"	5	12"	5'-6"	5	12"	11'-1"	76	5	7"	26'-5"	6	7"	26'-5"	30	4'-0"	4	7"	5'-9"	2'-6"
	5'	10 1/2"	9"	5	12"	6'-6"	5	12"	13'-1"	76	5	7"	26'-5"	6	7"	26'-5"	30	4'-0"	4	7"	6'-3"	2'-6"
	6'	10 1/2"	9"	5	12"	7'-6"	5	12"	15'-1"	84	5	7"	26'-5"	6	7"	26'-5"	30	4'-0"	4	7"	6'-9"	2'-6"
	7'	10 1/2"	9"	5	12"	8'-6"	5	12"	17'-1"	92	5	7"	26'-5"	6	7"	26'-5"	30	4'-0"	4	7"	7'-3"	2'-6"
10'	3'	12 1/2"	11"	5	12"	4'-10"	5	12"	9'-7"	68	5	6"	32'-9"	7	7"	32'-9"	36	5'-0"	5	7"	5'-10"	2'-8"
	4'	12 1/2"	11"	5	12"	5'-10"	5	12"	11'-7"	76	5	6"	32'-9"	7	7"	32'-9"	36	5'-0"	5	7"	6'-4"	2'-8"
	5'	12 1/2"	11"	5	12"	6'-10"	5	12"	13'-7"	76	5	6"	32'-9"	7	7"	32'-9"	36	5'-0"	5	7"	6'-10"	2'-8"
	6'	12 1/2"	11"	5	12"	7'-10"	5	12"	15'-7"	84	5	6"	32'-9"	7	7"	32'-9"	36	5'-0"	5	7"	7'-4"	2'-8"
	7'	12 1/2"	11"	5	12"	8'-10"	5	12"	17'-7"	92	5	6"	32'-9"	7	7"	32'-9"	36	5'-0"	5	7"	7'-10"	2'-8"
12'	8'	12 1/2"	11"	5	12"	9'-10"	5	12"	19'-7"	92	5	6"	32'-9"	7	7"	32'-9"	36	5'-0"	5	7"	8'-4"	2'-8"
	9'	12 1/2"	11"	5	12"	10'-10"	5	12"	21'-7"	100	5	6"	32'-9"	7	7"	32'-9"	36	5'-0"	5	7"	8'-10"	2'-8"
	10'	12 1/2"	11"	5	12"	11'-10"	5	12"	23'-7"	108	5	6"	32'-9"	7	7"	32'-9"	36	5'-0"	5	7"	9'-4"	2'-8"
	11'	15"	13"	5	12"	10'-3"	5	12"	20'-4"	92	6	7"	39'-1"	7	7"	39'-1"	42	6'-0"	5	7"	8'-9"	2'-11"
	12'	15"	13"	5	12"	11'-3"	5	12"	22'-4"	100	6	7"	39'-1"	7	7"	39'-1"	42	6'-0"	5	7"	9'-3"	2'-11"

⊕ Total number of bars in the cross-section.



Height "H"	"J" Dim.	"K" Spaces
3'	9"	1
4'	6"	2
5'	12"	2
6'	9"	3
7'	6"	4
8'	12"	4
9'	9"	5
10'	6"	6
11'	12"	6
12'	9"	7

NOTE:
Reinforcing shown for 8'-0 x 8'-0 Table II box. Use the appropriate table to determine the reinforcing requirements of selected box.



NOTE:
For General Notes, Dimensions, and additional Details, see SD 6.01 (1 to 4). For Quantities and Tables III thru V see SD 6.03 (2 of 2).

DESIGN APPROVED <i>Celina Aman</i>	ARIZONA DEPARTMENT OF TRANSPORTATION INFRASTRUCTURE DELIVERY AND OPERATIONS DIVISION BRIDGE GROUP STRUCTURE DETAIL	
APPROVED FOR DISTRIBUTION <i>[Signature]</i>	REINFORCED CONCRETE BOX CULVERTS TRIPLE BARREL (0' - 15' FILLS)	
ROUTE	PROJECT NO.	FA NO.
LOCATION	DRAWING NO. SD 6.03 (1 of 2)	
SHEET NO.		OF

New box culverts shall not be constructed using 3' or 4' heights without special approval from ADOT Bridge Group. Tables referencing these sizes are provided for extension of existing box culverts only.