

## MAINTENANCE UNIT BOUNDARIES & PROJECTS

### YUMA MAINTENANCE

Supervisor: Miguel Figueroa 928.317.2124

I-8	MP 0 — 79.86
US 95	MP 0-0.6, 29.3-70.7
SR 195	MP 5.5 — 27
US 92	MP 34 - 70

### QUARTZSITE MAINTENANCE

Supervisor: Timothy Mitchell 928.927.6311

I-10	MP 0 — 52
SR 72	MP 13.1 — 49.9
US/SR 95	MP 70.7 — 161.7
US 60	MP 31.26 — 49.56
SR 95 Spur	MP 143.8 — 144.8
SR 95 Spur	MP 158.7 — 159.5

SR 95, MP 116 to MP 125 Crack Sealing

### GILA BEND MAINTENANCE

Supervisor: David Miller 928.683.2582

I-8	MP 79.87 — 147.6
SR 85	MP 120.3 — 148.5
SR 85 South	MP 0 — 32.51

### TONOPAH MAINTENANCE

Supervisor: Dan Zuelsdorf 623.393.8376

I-10	MP 52— 113.40
SR 85	MP 148.5— 155.04

# MOVE OVER AZ

Every vehicle, every time.  
It's the law.

ADOT



## DON'T DRIVE INTO A DUST STORM

[PullAsideStayAlive.org](http://PullAsideStayAlive.org)

ADOT

## TRAFFIC INCIDENT MANAGEMENT:

### QUICK CLEARANCE

Why move your vehicle out of travel lanes?

### FENDER BENDER?

If you're in a minor or non-injury crash and your vehicle is operable, move it out of travel lanes.

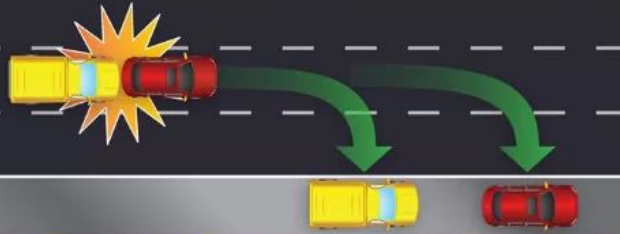
**M**ove your vehicle to the side of the road and inspect it there – not in dangerous travel lanes.

**O**ften, a primary crash leads to a traffic backup and increases the risk of a secondary crash, which can be more severe than the original collision.

**V**ehicles involved in a non-injury crash that remain operable, according to Arizona law, must be removed from the roadway.

**E**mergency responders – police, fire, tow truck operators, etc. – need a safe place to work, too. On average, a tow truck operator is struck and killed every six days in the U.S.

- Driver Safety
- Traveler Safety
- Responder Safety
- It's the Law!



ADOT



## CURRENT CONSTRUCTION PROJECTS

<b>Interstate 8</b>	MP 46—SW of Dateland
Type of Project:	Pavement Preservation
Contractor:	Fisher Sand & Gravel
Status:	50% Complete
Contract Amount:	\$18,765,432
<b>Interstate 8</b>	MP 82 to MP 96
Type of Project:	Pavement Preservation
Contractor:	FNF Construction, Inc.
Status:	80% Complete
Contract Amount:	\$12,676,839
<b>Interstate 8</b>	Ave 36E to MP 46
Type of Project:	Pavement Preservation
Contractor:	Fisher Sand & Gravel
Status:	0% Complete
Contract Amount:	\$8,711,111
<b>Interstate 10</b>	Tyson Wash Bridge
Type of Project:	Spot Repair & Scour Retrofit
Contractor:	Combs Construction
Status:	0% Complete
Contract Amount:	\$1,156,244
<b>Statewide</b>	Various Locations
Type of Project:	Construct Horizontal Curve Warning Signs
Contractor:	ABBCO Sign Group
Status:	0% Complete
Contract Amount:	\$367,675

## CURRENT MAINTENANCE PROJECTS

No Current Maintenance Projects

## UPCOMING CONSTRUCTION PROJECTS

PROJECT	ADVERTISE
<b>La Paz County, Farmers Bridge</b> Bridge Rehabilitation	FY 20
<b>Yuma Region (Parker)</b> ADA Features Upgraded	FY 21
<b>US 95, MP 80-96</b> Spot Repair & Chip Seal	FY 21
<b>Interstate 10, Bouse Wash Rest Area</b> Rest Area Rehabilitation	FY 21
<b>Interstate 8, MP .01—MP 31</b> Various Bridges	FY 21
<b>US 95, Dome Valley Road</b> Intersection Improvements	FY 21
<b>US 95, Ave 9E to Fortuna Wash</b> Roadway Widening	FY 21
<b>Interstate 10, MP 105—Jct. SR 85</b> Pavement Preservation	FY 23

## UPCOMING MAINTENANCE PROJECTS

PROJECT	DATES
<b>SR 95, MP 142.5 to MP 144.9</b> Slurry Seal	September 2020
<b>SR 95, MP 131.6 to MP 142.5</b>	TBD



## SOUTHWEST DISTRICT STAFF

<b>Paul Patane</b>	District Engineer
<b>Michael Jones</b>	Assistant District Engineer
<b>Bruce Fenske</b>	Sr. Operations Engineer
<b>Jaime Hernandez</b>	Sr. Resident Engineer
<b>Jonathan Fell</b>	Resident Engineer
<b>Danny Soliz</b>	Operations Superintendent
<b>Stephanie Dyer</b>	Community Relations Manager
<b>Gerry Ramirez</b>	Permits Supervisor
<b>Frank Felix</b>	Traffic Analyst
<b>Coby Teal</b>	Environmental Coordinator

### District Office

2243 E Gila Ridge Road | Yuma, AZ 85365  
Phone: 928.317.2101 Fax: 928.317.2107

### Construction Office

2243 E. Gila Ridge Road | Yuma, AZ 85365  
Phone: 928.317.2150

### Southwest District Contacts

[azdot.gov/business/district-contacts/yuma](http://azdot.gov/business/district-contacts/yuma)

**Media Line 1.800.949.8057**

**Project Information Hotline 1.855.712.8530**

**ADOT Natural Resources Hotline 1.888.822.2604**

### AZ 5-1-1

**Updates Arizona's Road Conditions Every 5 Minutes**

**az511.com Click on 'Closures'**

**Or Call: 1.888.411.ROAD (7623)**



DOWNLOAD THE ADOT APP

The App is a free download available on both iTunes App Store and Google Play

