

Sample of Results of Survey sheets portraying monumentation of existing R/W

Back in March of this year, I sent a series of emails out regarding the development of a new scope task and standard for monumenting unfound existing R/W corners, and portraying this information on the results of survey. I mentioned that once a representative sample was produced, I would send it out to everyone. I have attached the March email as reference.

We now have a working sample.

Attached are various highlighted sheets of a results of survey that this task has been completed for. The items highlighted are items that were added or modified to the initial survey drawing, for this new task. Also attached for reference is the current revised portion of the boilerplate scope that pertains to the highlighted modifications of the drawing. The second sheet of the survey example shows another variation for a new monument that was set, for which the description does not match the standard detail.

Unless some unanticipated issues come up regarding this new task and the graphical representation thereof, the attached samples will be the working standard for this task unless otherwise notified in the future. It is uncertain at this time if a new "official" standards exhibit will be produced for this variation of the results of survey.

Daniel N. Miller, RLS
ADOT R/W Plans Section
Technical Leader/Project Manager
205 S.17th Ave, MD 612E
Phoenix, Az. 85007
(602) 712-6174
DNMiller@azdot.gov

To reflect the newly set monuments, the Results of Survey sheets will be revised as follows:

On the affected Results of Survey plan/corridor sheets:

- a) Place the 'New R/W monument' symbol at all corners that a new monument is being placed;
- b) A filled-in star symbol will be placed by the calculated point number;
- c) Below or next to the legend, add the New R/W Monument symbol and text
- d) Below or next to the legend, add the star symbol with the description stated as "unless otherwise noted set standard ADOT R/W monument at calculated position in 'month/year' "
- e) Add the ADOT standard R/W monument detail to each affected sheet, with the star symbol next to it.

On the affected coordinate table sheets:

- f) Add the star symbol next to each affected point in the calculated points table. Then add the star symbol below the table with the same description shown in d) above.

The Consultant shall:

1. Revise an estimated _____ Results of Survey sheets as described above.
2. Monument the Existing R/W as outlined above.

It is estimated that a total of _____ monuments will need to be staked. Of the _____ monuments, _____ are to be Final R/W monuments set at Existing R/W corner locations, and _____ are to be set at the discretion of the Consultant.

The following items are included with this Scope of Work:

1. Highlighted set of Results of Survey indicating corner locations to be monumented.

COMPLETION OF STAKING DUE BY, _____

REVIEWS:

REVIEW TIME FOR THE REVISED RESULTS OF SURVEY WILL BE TEN (10) WORKING DAYS

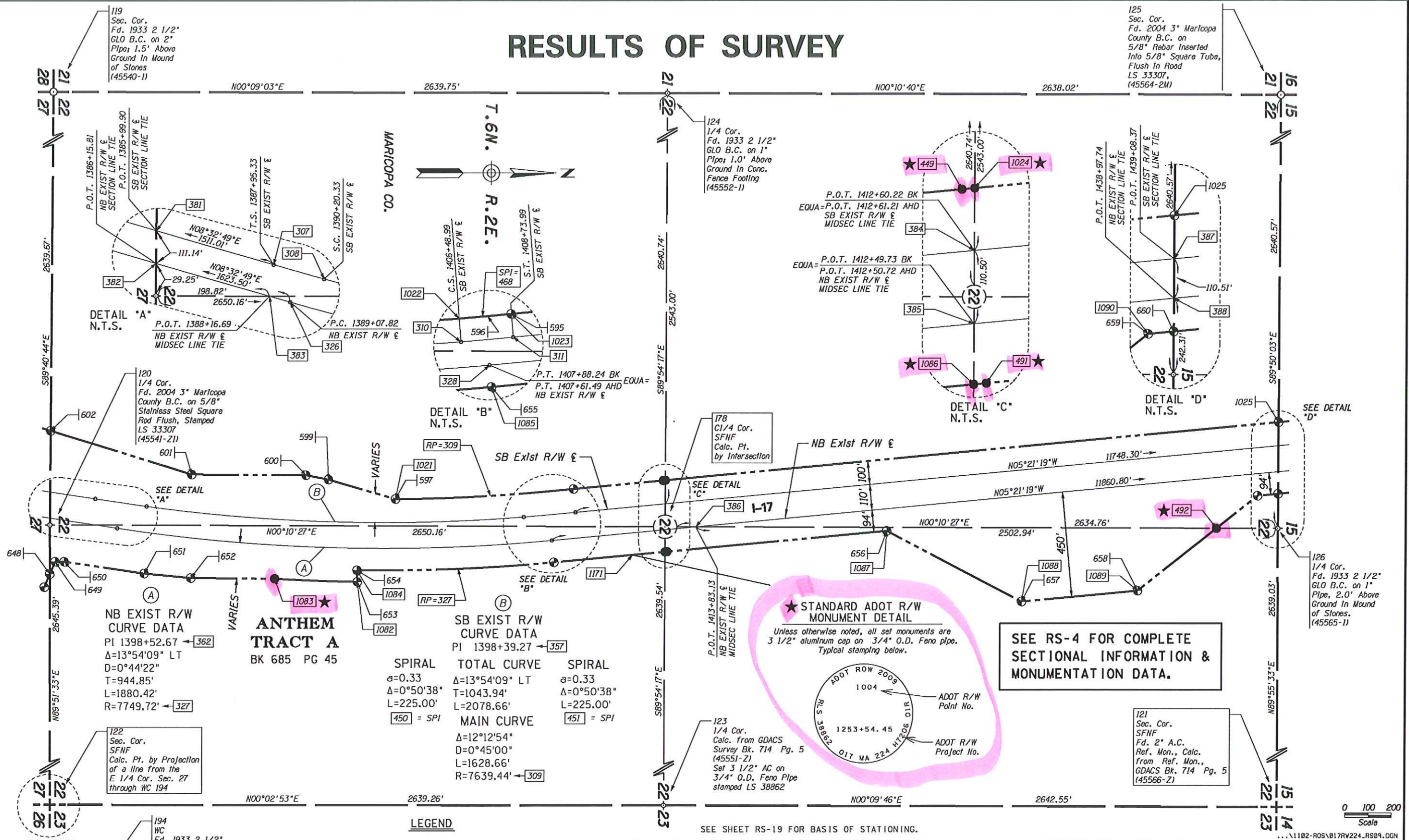
(Note: Only 1 review will be associated with this task)

A. INITIAL REVIEW

DUE BY, _____

1. The revised Results of Survey sheets and Survey Calculations shall be submitted for review when all phases of work have been accomplished. The Results of Survey sheets shall submitted to ADOT RW Plans for review **after** Consultant has completed a Quality Assurance check on all aspects of the Task. Sheets submitted for review which indicate that such a Quality Assurance Review has not been performed will be returned un-reviewed to Consultant for correction.

RESULTS OF SURVEY

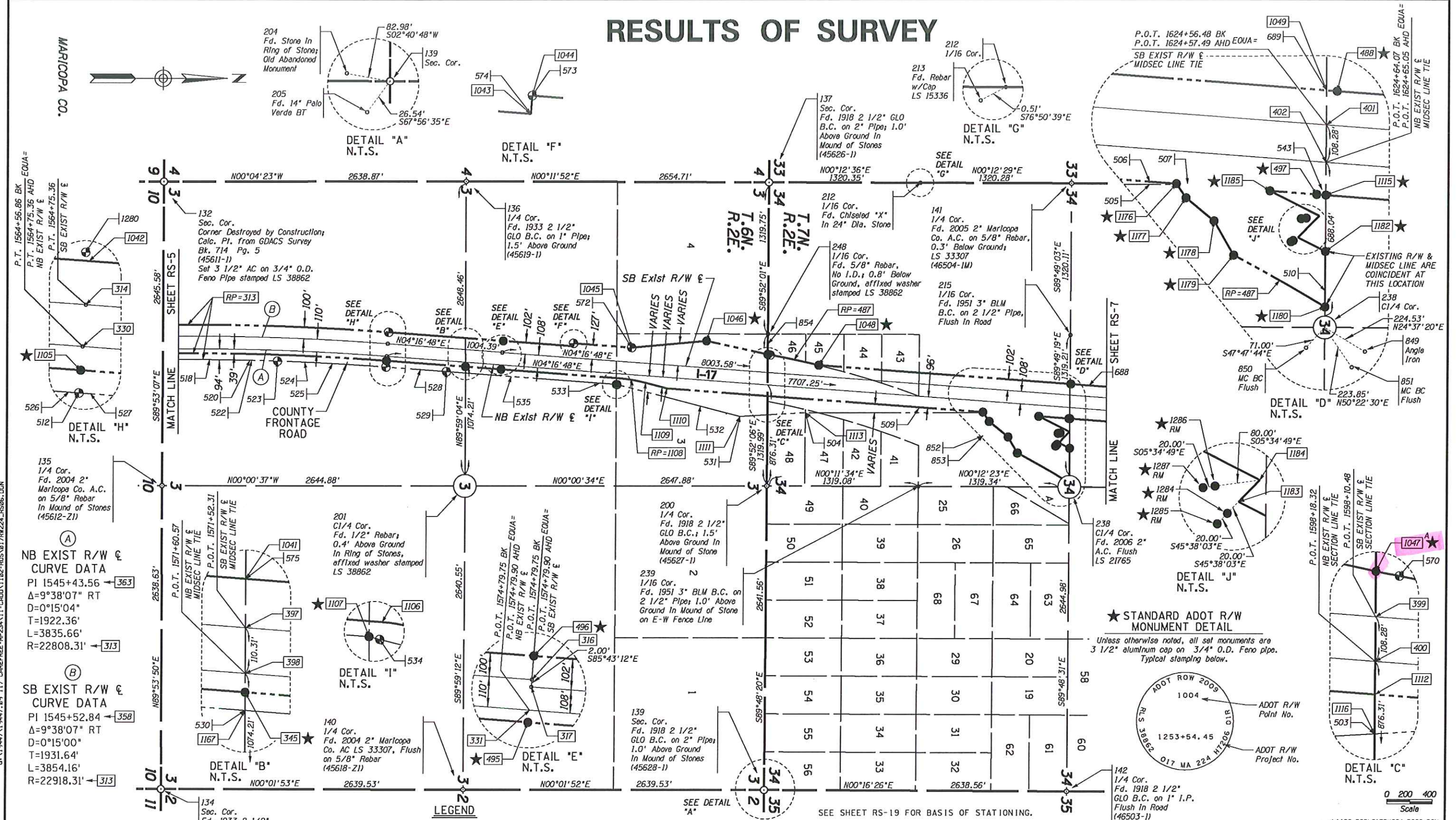


SEE SHEET RS-19 FOR BASIS OF STATIONING.

CHANGE ORDER REVISIONS				DRAWING NO. D-7-T-978		ARIZONA DEPARTMENT OF TRANSPORTATION	
C.O. NO.	DATE	BY	DESCRIPTION OF REVISIONS	SURVEY	NOV. 2007	INTERMODAL TRANSPORTATION DIVISION	
				DRAWN/DATE	RES/DEC. 2007	HIGHWAY NAME:	
				ADOT REVIEW	B. Gurney	PHOENIX - CORDES JCT.	
						FEDERAL AID NO.:	
						UNASSIGNED	
						PROJECT NO.:	
						017 MA 224 H7206 OIR	
						PRELIMINARY NOT FOR CONSTRUCTION OR RECORDING	
						--CREATED--	
						8/28/2009	
						4:54:19 PM	
						SHEET RS-9	

RESULTS OF SURVEY

MARICOPA CO.



NOTE: THE FRONTAGE ROAD ON THE EAST SIDE OF I-17 WAS ABANDONED TO MARICOPA COUNTY BY RES. 75-10-A-41, DKT. 11219 PG. 52. THIS AREA IS BEING SHOWN ON THE SURVEY BECAUSE THE EXISTING MONUMENTS ARE ALONG THE EAST LINE OF THE ABANDONED HIGHWAY.

LEGEND

- 302 Set Monument
- 300 Found Monument
- SFNF Searched For Not Found (Pt. No.) GDACS Point Number
- 301 Calculated position
- Existing ADOT R/W monument
- New R/W monument
- Unless otherwise noted, set standard ADOT R/W monument at calculated position in April 2009.
- ★ Epoxied standard ADOT R/W monument over 1/2" rebar at calculated position in April 2009.

CHANGE ORDER REVISIONS			
C.O. NO.	DATE	BY	DESCRIPTION OF REVISIONS

DRAWING NO.	D-7-T-978	ARIZONA DEPARTMENT OF TRANSPORTATION INTERMODAL TRANSPORTATION DIVISION RIGHT OF WAY PLANS SECTION
SURVEY	NOV. 2007	HIGHWAY NAME: PHOENIX - CORDES JCT.
DRAWN/DATE	RES/DEC. 2007	FEDERAL AID NO.:
ADOT REVIEW	B. Gurney	UNASSIGNED
PROJECT NO.:	017 MA 224 H7206 01R	PRELIMINARY NOT FOR CONSTRUCTION OR RECORDING --CREATED-- 8/28/2009 4:54:05 PM
ROUTE NO.:	I-17	LOCATION: Carefree Hwy - MP 234
SHEET	RS-6	

RESULTS OF SURVEY

CALCULATED POINTS			
PT.	NORTHING	EASTING	DESCRIPTION
191	1018205.01216	633691.50233	(C)
300	1017566.63012	633691.10130	(C)
301	1021247.84381	633049.54059	(C)
302	1017312.95891	610471.54917	(C)
303	1023895.39515	632424.23805	(C)
304	1027883.92840	631228.29044	(C)
305	1031175.14652	642204.63488	(C)
306	1032878.22374	630872.74263	(C)
307	1034372.44900	631097.31068	(C)
308	1034595.10951	631129.65762	(C)
309	1035619.12464	623559.16260	(C)
310	1036220.05483	631174.92814	(C)
311	1036444.17092	631155.02827	(C)
312	1048141.18682	630058.52317	(C)
313	1050280.22397	652876.79515	(C)
314	1051990.63886	630022.39739	(C)
316	1052992.22454	630097.35570	(C)
317	1052992.07528	630099.35013	(C)
318	1060973.33750	630696.66491	(C)
319	1068835.31889	659264.66211	(C)
320	1063049.93434	630928.49081	(C)
321	1071132.07650	632130.59821	(C)
322	1021266.72991	633157.90717	(C)
323	1023926.98858	632529.60339	(C)
324	1027915.52183	631333.65578	(C)
325	1032861.87537	630981.52099	(C)
326	1034467.34963	631222.80872	(C)
327	1035619.12483	623559.15594	(C)
328	1036342.43024	631275.04794	(C)
329	1048151.45346	630168.04302	(C)
330	1051982.42946	630132.09063	(C)
331	1052984.01514	630207.04894	(C)
332	1059668.18339	630707.28968	(C)
333	1057957.76851	653561.68744	(C)
334	1064812.22830	631692.40769	(C)
335	1066176.83789	632120.11549	(C)
336	1066608.96600	632246.28484	(C)
338	1067640.85038	632358.58066	(C)
339	1068090.00242	632328.31748	(C)
340	1067129.51099	632340.57822	(C)
341	1067641.19923	632360.57195	(C)
342	1068090.11136	632330.31556	(C)
343	1068990.21190	632251.87037	(C)
344	1069589.10800	632220.68250	(C)
★345	1052665.73632	630222.33813	(C)
346	1071029.29435	632614.49984	(C)
347	1070477.87212	632378.73989	(C)
348	1071101.64730	632648.46775	(C)
349	1071512.60292	632831.64261	(C)
350	1072929.50716	629284.44191	(C)
351	1072179.01720	633029.70762	(C)
352	1072623.30843	633100.72071	(C)
353	1073696.68850	633250.73522	(C)
355	1022590.20802	632815.59380	(C)
356	1030341.27663	630491.46325	(C)
357	1035404.79148	631252.46209	(C)
358	1050064.39044	629878.23766	(C)
359	1062015.86592	630774.68736	(C)
360	1022615.53700	632922.83751	(C)
361	1030349.28120	630603.90162	(C)
362	1035401.70542	631363.23364	(C)
363	1050065.42636	629988.62281	(C)
364	1062296.85918	630904.01883	(C)
365	1067112.82335	632413.48019	(C)
366	1070058.55632	632158.76245	(C)
367	1071828.29394	632989.61029	(C)
368	1018202.09332	633580.35298	(C)
369	1020846.39802	633119.50443	(C)
370	1020847.73428	633230.92959	(C)
371	1023503.59856	632537.92623	(C)
372	1023503.83774	632652.08487	(C)
373	1026267.76772	631712.89051	(C)
374	1026267.35758	631827.85201	(C)
375	1028024.06332	631187.24279	(C)
376	1028446.45707	631188.39262	(C)
377	1028914.17839	630970.74521	(C)
378	1028913.86881	631083.03595	(C)
379	1031553.84669	630751.73829	(C)
380	1031553.61259	630861.79118	(C)
381	1034179.19767	631068.26682	(C)

CALCULATED POINTS (CONTINUED)			
PT.	NORTHING	EASTING	DESCRIPTION
382	1034178.57497	631179.40860	(C)
383	1034377.22574	631209.26395	(C)
384	1036828.71892	631118.97986	(C)
385	1036828.53534	631229.47933	(C)
386	1036960.36988	631217.12086	(C)
387	1039464.32305	630871.91229	(C)
388	1039464.00308	630982.42454	(C)
389	1042110.91110	630623.81505	(C)
390	1042110.83622	630734.30433	(C)
391	1044747.48991	630376.65611	(C)
392	1044747.18862	630487.16661	(C)
393	1047388.53785	630129.07821	(C)
394	1047388.31888	630239.58100	(C)
395	1050023.73285	629959.91866	(C)
396	1050023.51280	630069.92808	(C)
397	1052665.69540	630072.91838	(C)
398	1052665.72561	630183.22827	(C)
399	1055316.15938	630273.92374	(C)
400	1055315.91079	630381.56717	(C)
401	1057954.77567	630470.75683	(C)
402	1057954.43908	630579.40367	(C)
403	1060593.42040	630668.23205	(C)
404	1060592.96655	630795.38016	(C)
405	1063236.43247	630956.22984	(C)
406	1063235.50445	631259.34408	(C)
407	1063339.24256	631284.14824	(C)
408	1065479.92366	631289.91827	(C)
409	1065875.06934	631348.69075	(C)
410	1065873.03369	632024.89453	(C)
411	1068517.29667	631741.68570	(C)
★412	1068515.90652	632293.20684	(C)
★413	1071120.56076	632031.82933	(C)
415	1044747.33686	630437.79167	(C)
416	1026022.42623	631567.21811	(C)
417	1026082.74095	631768.37013	(C)
418	1026114.33438	631873.73547	(C)
419	1026211.92466	632199.20298	(C)
420	1033897.37485	630442.13978	(C)
421	1042479.74441	629988.12612	(C)
422	1033911.10263	630652.63624	(C)
423	1033940.55391	631032.40090	(C)
426	1033975.97073	631489.08926	(C)
424	1033949.28210	631144.94803	(C)
438	1059600.91598	629437.33925	(C)
439	1060178.88966	630637.20872	(C)
440	1060236.56829	630756.94917	(C)
443	1059535.67091	631502.32567	(C)
448	1032906.06205	630687.51276	(C)
★449	1036819.38561	631019.41637	(C)
450	1034520.78481	631119.60417	(C)
★451	1036294.82398	631169.02840	(C)
★452	1044748.53028	629995.05060	(C)
★453	1044746.24572	630833.02134	(C)
454	1065872.63633	632156.88802	(C)
455	1064375.41545	632087.99764	(C)
456	1063232.89935	632110.23915	(C)
457	1060651.16004	632160.49820	(C)
458	1064598.45007	643544.98283	(C)
459	1066481.09836	632241.53692	(C)
460	1066684.32842	632275.38595	(C)
461	1067534.15769	628542.35344	(C)
462	1066980.30574	632324.68253	(C)
463	1067791.18988	632356.36704	(C)
464	1067383.74128	632391.87684	(C)
465	1069388.93056	632217.12312	(C)
★467	1042101.57779	630524.25156	(C)
468	1036286.22378	631069.39618	(C)
469	1069538.15235	635085.01827	(C)
470	1071373.25863	632775.98252	(C)
471	1072326.14206	633059.18904	(C)
472	1070667.00354	632444.42171	(C)
473	1065435.35926	632067.36358	(C)
474	1066463.31095	632209.90437	(C)
475	1067790.92140	632354.38286	(C)
476	1071120.21510	632128.83399	(C)
477	1071118.33551	632656.30245	(C)
478	1026268.43069	631527.06196	(C)
479	1026266.09067	632182.96149	(C)

CALCULATED POINTS (CONTINUED)			
PT.	NORTHING	EASTING	DESCRIPTION
480	1067802.68444	632556.12338	(C)
481	1069395.85308	632417.27620	(C)
482	1070591.49712	632629.90897	(C)
483	1071293.59788	632959.52784	(C)
484	1060491.22232	631285.60922	(C)
485	1033902.94702	630547.47225	(C)
★486	1047379.20454	630029.51472	(C)
487	1053901.79723	637826.50621	(C)
★488	1057961.94024	630375.02456	(C)
489	1060594.01840	630500.69658	(C)
★490	1032829.19992	631198.93611	(C)
★491	1036837.30865	631323.06902	(C)
★492	1039199.52424	631223.93149	(C)
★493	1042119.60953	630827.89402	(C)
494	1047397.09219	630333.17069	(C)
★495	1052981.10453	630245.94018	(C)
★496	1052999.68763	629997.63458	(C)
★497	1057947.27451	630674.76595	(C)
498	1068515.40038	632494.00905	(C)
499	1068516.41266	632092.40462	(C)
585	1044407.40342	630104.63714	(C)
666	1071114.28874	632433.45853	(C)
667	1059691.27762	629394.50049	(C)
668	1059511.09247	629481.29516	(C)
907	1042109.29487	630680.08778	(C)
908	1047388.42662	630185.20986	(C)
1003	1020845.18325	633018.20883	(C)
★1004	1021230.67464	632951.02552	(C)
1005	1023503.38105	632434.10884	(C)
1006	1023866.67385	632328.45137	(C)
1007	1025134.46797	631948.30778	(C)
1008	1025556.89162	631790.32595	(C)
1009	1025974.53329	631581.57864	(C)
★1010	1026070.31996	631552.85735	(C)
1011	1026562.65171	631488.75234	(C)
1012	1026954.41480	631402.60315	(C)
★1013	1027675.81186	631186.29479	(C)
1014	1027855.20710	631132.50376	(C)
1015	1028914.45971	630868.70173	(C)
★1016	1031554.05950	630651.69109	(C)
1017	1032410.78050	630711.71124	(C)
1018	1033125.98689	630676.76767	(C)
1019	1034122.30680	630789.36690	(C)
★1020	1047391.95887	630278.41077	(C)
1021	1035669.09674	631098.43426	(C)
1022	1036212.18868	631075.23800	(C)
1023	1036434.83761	631055.46478	(C)
★1024	1036828.88581	631018.52580	(C)
1025	1039464.61392	630771.44660	(C)
1026	1039546.21734	630763.79691	(C)
1027	1040061.14934	630363.99153	(C)
1028	1040558.96681	630317.32498	(C)
1029	1041139.23261	630614.46400	(C)
★1030	1042110.97918	630523.37025	(C)
★1031	1043080.32389	630432.50165	(C)
★1032	1044407.48945	630105.12713	(C)
★1033	1044538.26598	630007.45257	(C)
1034	1044589.93750	630007.56795	(C)
1035	1044815.46979	630008.07159	(C)
1036	1044873.26514	630008.20065	(C)
1037	1045690.81188	630187.78852	(C)
★1038	1047388.73691	630028.62113	(C)
1039	1048131.85351	629958.95968	(C)
1040	1050023.93289	629859.91019	(C)
1041	1052665.66794	629972.63667	(C)
1042	1051998.10195	629922.67627	(C)
1043	1053616.85909	630043.82347	(C)
1044	1053618.73454	630018.89391	(C)
1045	1054120.69887	630056.46074	(C)