



## DBE News & Events

September 25, 2018

### Arizona Laying the Groundwork for Future I-11

After investing more than half a billion dollars over the past 20 years to turn the primary route between Phoenix and Las Vegas into a modern four-lane divided highway, the Arizona Department of Transportation has committed another \$155M for improvements to US 93 over the next five years.

All of this is with an eye toward an Interstate 11 between the two largest cities in the country not directly connected by an interstate freeway and spanning the state from the border with Mexico to Hoover Dam. Since 2014, signs have marked US 93 in Arizona as the "Future I-11 Corridor."

"ADOT has spent years investing in the future Interstate 11 and laying the foundation for this border-to-border highway," ADOT Director John Halikowski said. "We're putting the pieces together today for what I-11 will be in the future. These substantial and continuing investments show our commitment to a corridor that is essential for commercial and recreational travel and also to making Arizona a better place to live and work."

In addition to the completed and planned improvements to US 93, a \$134M ADOT project beginning next year will upgrade State Route 189, the 3.75-mile Nogales highway connecting Interstate 19 with the Mariposa Port of Entry. This route is essential to trade between Arizona and Mexico, the state's largest international trading partner.

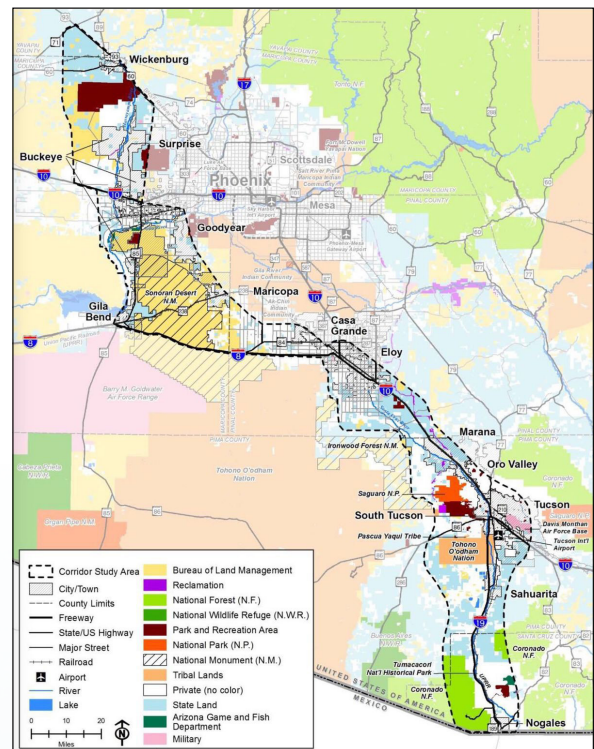
In 2015, the Fixing America's Surface Transportation Act, or FAST Act, formally designated I-11 throughout Arizona. It stated the I-11 corridor will generally follow State Route 189 and Interstate 19 from Nogales to Tucson, Interstate 10 from Tucson to Phoenix, and US 93 from Wickenburg to the Nevada state line.

The designation doesn't include funding but identifies I-11 as a high-priority corridor eligible for federal funding. ADOT continues to work with its federal, state and local partners to identify funding for I-11, which is expected to include a combination of new and existing roadways.

ADOT is currently funding and conducting an environmental study to identify a potential 2,000-foot wide corridor for I-11 between Nogales and Wickenburg. The Tier 1 Environmental Impact Statement, required by the National Environmental Policy Act, is expected to be complete in late 2019 or early 2020. Tier 2 environmental studies would be required to narrow a corridor into a specific freeway alignment if the build option is selected as part of the Tier 1 study.

As I-11 comes closer to reality in Arizona, US 93 would be upgraded to interstate highway standards, including creating traffic interchanges.

Currently all but 39 miles of the 200-mile drive from Wickenburg to the Nevada state line has been upgraded to a four-lane divided highway to improve traffic flow, support the



movement of freight and enhance safety through this heavily traveled area. The entire northern segment of US 93 from Kingman to the Nevada state line (mileposts 1 to 68) is now a four-lane divided highway following the completion of a \$71M project in 2010.

ADOT's 2019-2023 Five-Year Transportation Facilities Construction Program includes more than \$155M dedicated to projects to improve US 93 from Wickenburg to the Nevada state line north of

Kingman, the designated route of I-11. This includes three projects that will widen an additional 11 miles of US 93 to four-lane divided highway and the start of right-of-way acquisition for a new US 93 interchange with I-40 in Kingman.

For more information about I-11 in Arizona, visit [i11study.com/Arizona](http://i11study.com/Arizona).

**ARE YOU READY**  
FOR THE ROAD TO THE FUTURE?  
THE CONFERENCE HAS SOMETHING FOR YOU!

**REGISTER TODAY!**

**2018**  
**ADOT DBE AND**  
**SMALL BUSINESS**  
**CONFERENCE**

**ROAD TO**  
**THE**  
**FUTURE**



## **DBE News & Events**

September 25, 2018

### **Use Coaching Skills to Handle Difficult Conversations**

By Steve Feld for Greater Phoenix SCORE

Many owners and leaders have confided in me that one of the most difficult aspects of their job is those difficult conversations with their employees. A lot of those leaders either ignore them or hope they will go away by themselves. But wishful thinking is not managerial thinking. Leaders need to know how to put things right.

#### **A 5-POINT PLAN**

##### **1. IT'S ONLY DIFFICULT IF YOU THINK IT IS**

Drop the idea that this will be a "difficult" conversation. Remember that you have the right to raise the issue if it is something that affects you or the people you are responsible for. You don't have to justify, explain or excuse yourself.

##### **2. EVEN WHEN IT'S PERSONAL, DON'T MAKE IT PERSONAL**

The only feeling you should (express) is a desire to help the other person. Discuss what the person is doing and what they can do differently. This is not about who they are.

##### **3. EASE YOUR WAY IN**

In any conversation that deals with personal issues, it is best to ease your way in while not misleading the person about the subject under discussion. Start with, "How are things going?"; move on to facts, proceed to their views, and finally to how they feel.

##### **4. LINK YOUR FEEDBACK TO A BUSINESS ISSUE**

If you are the team leader, you need to relate everything in the conversation to business issues. For you, it's about "what" — what they are doing and what they can do differently.

##### **5. HAVE A NEUTRAL SPOT WHERE YOU CAN BOTH GO IF THINGS BECOME AWKWARD**

If people become defensive, back off by going to a neutral third spot where you can both look at the behavior dispassionately. Don't challenge them by saying something like, "Your personal hygiene needs to be improved". Instead, say something like, "Let's try to figure out why you and I see this issue differently."

#### **DIFFICULT CONVERSATIONS: YOU CAN SUCCEED**

Difficult conversations are unavoidable in the workplace but, given the right approach and the right skills, they can be managed. You should aim to put emotions, stress, and personal issues aside and bring behavior, performance, and the business center stage.

Read the full article at [Greater Phoenix SCORE](#).

### **Officials Seeking Sonoran Corridor Input**

Source: Arizona Department of Transportation

Nearly halfway through a three-year environmental study, state and federal transportation officials want input on a proposed Sonoran Corridor connecting Interstate 10 and Interstate 19 south of Tucson International Airport.

The Arizona Department of Transportation and the Federal Highway Administration will hold a public information meeting from 5:30-7:30 p.m. Wednesday, Sept. 26, to hear public comments and suggestions for the Sonoran Corridor. The meeting will be held at the Desert Diamond Casino, 7350 S. Nogales Highway in Tucson. A presentation will begin at 6 p.m.

The Sonoran Corridor has been designated as a high-priority corridor under the federal Fixing America's Surface Transportation Act. It would support and connect the

economy of southern Arizona and the entire state. It also would reduce travel distances south of Tucson and relieve congestion at the current interchange of I-10 and I-19 southwest of downtown Tucson.

State and federal officials are identifying and studying a range of possible corridors along with the opportunities and constraints of each. The study considers the potential social, economic and natural environment impacts of the alternatives, as well as the impact of not building a freeway in this area.

The Tier 1 Environmental Impact Study is a three-year process developed in accordance with the National Environmental Policy Act. Expected to be completed in 2020, the Tier 1 study is evaluating multiple

2,000-foot-wide corridor alternatives that would connect I-19 and I-10 south of the Tucson International Airport. The study will evaluate a no-build alternative and multiple build alternatives to determine a recommendation based on technical analysis and other factors, including public input.

A future Tier 2 environmental study would advance the Tier 1 recommendations to identify the specific project alignment, effects and mitigation. There is no timeline or funding identified for the Tier 2 study.

For more information about this study, please visit [azdot.gov/SonoranCorridor](http://azdot.gov/SonoranCorridor). •

# DBE News & Events

September 25, 2018

## September

20

### For(u)m: Fall Subcontractor Expo

Location: 2200 East Riverview Drive, Phoenix  
Time: 1:00pm - 3:00pm

20

### Excavation Competent Person & Hazard Recognition

Location: 1661 N. Swan, Suite 144, Tucson  
Time: 1:00pm - 5:00pm

21

### Minority Small Business Education Seminar

Location: NAU, 15451 N 28th Ave, Room 284, Flagstaff  
Time: 9:00am - 1:30pm

21

### The American Indian Chamber Golf Classic

Location: 9998 East Indian Bend Rd. Scottsdale  
Time: Registration opens at 6:30am

25

### Arizona Innovation Day

Location: Virginia G. Piper Auditorium, 600 E Van Buren  
Time: 9:00am - 2:00pm

25

### Greater Phoenix Chamber's Economic Outlook 2019

Location: Sheraton Grand Phoenix  
Time: 7:00am - 10:00am

25

### Improve Your Cash Flow on Delay & Disruption Claims

Location: ABA, 1661 N Swan #144, Tucson  
Time: 8:00am - 4:00pm

25

### Professionalism: Importance of Building Your Brand

Location: Esplanade, 2501 E Camelback Rd, #50  
Time: 3:30pm - 6:00pm

26-27

### 2018 ADOT DBE and Small Business Conference

Location: Embassy Suites, 5001 N. Scottsdale Rd.  
Time: 1:00pm - 7:00pm & 7:00am - 2:00pm

26-27

### Regular Dealer in Disadvantaged Business Enterprise

Location: Webinar  
Time: 1:00pm - 3:00pm EST

28

### AICCAZ 2018 Chamber Luncheon

Location: Casino Arizona. 524 N 92nd St, Scottsdale  
Time: 11:30am - 1:00pm

29

### hive@central's 4th Annual Business Expo!

Location: College Depot, 1221 N Central Ave, Phoenix  
Time: 10:00am - 12:00pm

## October

3

### How to Prepare a Shareholders' Agreement

Location: Skysong Synergy I, 1365 N Scottsdale Rd #135  
Time: 8:00am - 9:30am

16

### October Luncheon: Women Icon

Location: Phoenix Country Club, 2901 N 7th St, Phoenix  
Time: 11:30am - 1:00pm

18

### Insurance Requirements for ADOT Contracts

Location: ADOT BECO 1801 W. Jefferson St.  
Time: 11:30am - 1:00pm

23

### Professional Services DBE Task Force Meeting

Location: ADOT BECO 1801 W. Jefferson St. Ste. 101  
Time: 9:00am - 11:00am

## November

7-9

### Construction in Indian Country National Conference

Location: Wild Horse Pass Casino, Chandler  
Time: 7:00am - 6:00pm

ADOT/  
BECO

Other  
Associations

## ADOT/BECO Events

### DBE TASK FORCE MEETINGS

#### Oct 23 - Professional Services Task Force

ADOT BECO 1801 W. Jefferson Ste. 101, Phoenix  
Time: 9:00am - 11:00 am

#### Nov 13 - DBE Construction Task Force

ADOT BECO 1801 W. Jefferson Ste. 101, Phoenix  
Time: 1:30 pm - 3:00 pm

DBE TASK FORCE

## Project Opportunities

September 25, 2018

### Links

[ADOT Current Advertisements](#)

[ADOT Engineering Advertisements](#)

[ADOT Public-Private Partnership Initiatives](#)


[ADOT Advertised Alternative Delivery Projects](#)

[Bidding Opportunities Around the State](#)

### Did you know?

Vehicle-to-vehicle (V2V) communication is the ability to wirelessly exchange information about the speed and position of surrounding vehicles. It is fundamental to the development of automated (self-driving) vehicles.

The National Highway Traffic Safety Administration (NHTSA) has been working with the automotive industry and academic institutions for more than a decade to advance V2V communication's lifesaving potential into reality.

 ADOT Bid openings after January 1st, 2017 will require prime contractors to submit DBE affidavits within 5 calendar days from bid opening. This is two days less than the current requirement. For example, if bid opens on Friday, the DBE Affidavits will be due to BECO, from the prime contractor, by Wednesday before 4:00 PM. Therefore, this is reducing the time DBEs and prime contractors have to prepare, sign and submit the DBE Affidavits to BECO. DBEs are urged to consider this new time restriction when working with prime contractors to complete and sign the DBE Affidavits in order for them to be submitted to BECO by the 5th calendar day from bid opening.

## Featured Federal-Aid Projects

General/Sub Contractors Opportunities						
Due Date	Project Valuation	DBE Goal	Solicitation/ Project Number	Type	Project Owner and Description	Contact
9/21/18 11am MST	\$3.2M	4.02%	BR-017-B(224)T; H854401C	<a href="#">IFB</a>	ADOT - <b>Construct Scour Retrofit, Verde River Bridge STR #1731 &amp; 505, Cordes Jct - Flagstaff Hwy (I-17)</b> . The work consists of retrofitting the existing bridge foundations with new reinforced concrete scour floor.	Jalal Kamal, Engineering Specialist, at Jkamal@azdot.gov or Tom Goodman, Construction Supervisor, at TGoodman@azdot.gov
9/21/18 11am MST	\$11M	5.76%	NHPP-095-C(222T; F012701C	<a href="#">IFB</a>	ADOT - <b>Pavement Preservation, Beacon Rd - East of Riverside Dr, Quartzsite - Parker-Topock Hwy (SR95)</b> . The work consists of variable depth milling, replacing existing pavement, placement of shoulder buildup, installing fence, reconstructing guardrail & installing radar detection.	Ghalib Mahdi, Engineering Specialist, at GMahdi@azdot.gov or Jaime Hernandez, Construction Supervisor, at JHernandez@azdot.gov
9/27/18 3pm	N/A	3.31%	ST1306.451; CHN0228D; SZ10501C; COCHA19-00008525	<a href="#">RFQ</a>	City of Chandler - Professional Services / Construction Management Services for Queen Creek Rd Improvements: McQueen Rd to Gilbert Rd.	Purchasing Office at 480-782-2400 or purchasing@chandleraz.gov
10/5/18 11am MST	\$2.8M	6.42%	HRRRP-SSC-0(205T; SH53301C	<a href="#">IFB</a>	ADOT - Roadway Improvements, Pendleton Dr, Via Caliente to Circulo Cerro & Pendleton Dr/Ruby Rd Intersection, Santa Cruz County. The work consists of widening Pendleton Dr., constructing left & right turn lanes, signing & pavement marking.	Mohammed Patwary, Engineering Specialist, at MPatwary@azdot.gov or Abraham Abdulnour, Construction Supervisor, at AAbdulnour@azdot.gov



You've Got Questions? We've Got Answers

**A free resource designed to  
make it easier for you to do  
business with ADOT!**

Find us at:

<http://www.azdot.gov/businesscoach>

*The answers you need are right at your fingertips 24  
hours a day!*

[CLICK HERE to VIEW INFORMATIONAL VIDEO](#)





## Connecting with Connect 202

As construction continues on the South Mountain Freeway Project, Connect 202 Partners, LLC (C202P) remains committed to reaching the project's Disadvantaged Business Enterprise (DBE) goals. C202P has developed a DBE Spotlight Recognition Program and each quarter a DBE firm will be recognized for their outstanding contribution to the project.

**C202P's 3rd Quarter 2018 DBE Spotlight is awarded to LS Fence, LLLP.** LS Fence is an exceptional DBE subcontractor with quality, efficiency, and professionalism displayed in their work. LS Fence plays an integral part to the project by setting up yard fences/gates project wide, installing pond fences, and installing critical fencing needed for temporary construction easements and culturally sensitive areas. They most recently were awarded the Permanent ROW Fence for Segments C&D. Their fast response and willingness to fulfill urgent requests allows work to continue without any interruptions. It is easy to recognize a company that signifies what it takes to be successful at their specialized scope of work and C202P appreciates the hard work demonstrated by each LS Fence employee. Congratulations!



Pictured Left to Right: Travis Legare (Salt River Segment Manager, C202P), Melissa Abraham (DBE/OJT Compliance Manager, C202P), Eve Patterson (Partner, LS Fence), Angela Komick (Contracts Manager, C202P), Walter Fedrowitz (Deputy Project Director, C202P)

### Upcoming Procurement Opportunities:

- None at this time

Follow us for up-to-date information on the project.



@SouthMountainFreeway



@Loop202SouthMountainFreeway

### PROJECT DESCRIPTION

#### Project Owner:

Arizona Department of Transportation

#### Project Name:

SR 202L (South Mountain Freeway)

I-10 (Maricopa Freeway) –

I-10 (Papago Freeway)

Public Private Partnership (P3)

Design-Build-Maintain Contract

#### Project Number:

202 MA 054 H882701 C

#### Project Substantial Completion

##### Date:

November 2019

#### DBE Goals:

16.45% Professional Services, 10.93%

Construction, 6.08% Capital Asset

Replacement Work

#### Committed DBE Percentages:

Professional Services = **16.76%**

Construction = **11.02%**

**Over \$109 Million Dollars Awarded!**