

R/W Project CADD File Names

R/W Project 068 MO 017 H2191 01R (State Route 68 at milepost 17) will be used as the example project for the required file names.

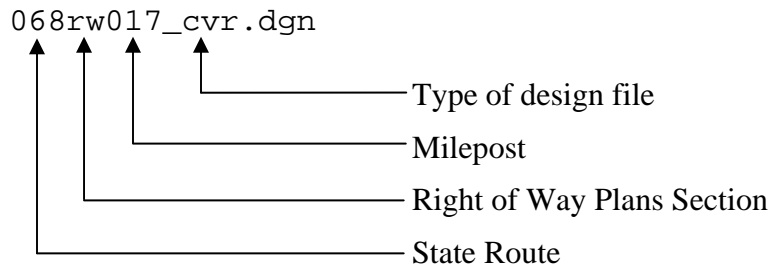
<u>Plan sheet type</u>	<u>Previous file name</u>	<u>New file name</u>
<u>Cover Sheet</u>	068rw017.cover	068rw017_cvr.dgn
<u>Standard Abbreviations</u>	068rw017.standards	068rw017_std.dgn
<u>Ownership Record sheet</u>	068rw017.ownership1	068rw017_ors01.dgn
	068rw017.ownership2	068rw017_ors02.dgn
(Optional reference file)		068rw017_ors-ref.dgn
<u>Vicinity Map</u>	068rw017.vicinity1	068rw017_vm01.dgn
	068rw017.vicinity2	068rw017_vm02.dgn
<u>Plan sheet</u>	068rw017.plan01	068rw017_p01.dgn
	068rw017.plan02	068rw017_p02.dgn
<u>Linework files</u>		
Vicinity Linework	068rw017.vicinitylinework	068rw017_pln.dgn
Plan Linework	068rw017.planlinework	068rw017_pln.dgn
Centerlines	068rw017.alignment	068rw017_pln.dgn
New R/W, TCE, etc.	068rw017.newacq	068rw017_pln.dgn
<u>Plansheet Border</u>	068rw017.border	068rw017_bdr.dgn
<u>Miscellaneous</u>		
Index to Existing R/W (If separate sheet is approved)	068rw017.existingindex	068rw017_idx.dgn
Parcel Exhibit	8-670.parcelexhibit	8-670_exh.dgn
Parcel Insert Sheet	068rw017.plan??	068rw017_par01.dgn
Point ID Sheet	068rw017.pointid01	068rw017_ptid01.dgn
<u>Resolution of Establishment</u>	068rw017.resolution	068rw017_res.dgn
<u>Cogo</u>		
Point file (ASCII)	068rw017.asc	068rw017.asc

<u>Plan sheet type</u>	<u>Previous file name</u>	<u>New file name</u>
<u>Results of Survey, Monumentation Staking Plan & Monumentation Survey</u>		
Survey Linework	068rw017.surveylinework	068rw017_pln.dgn
Plan sheet	068rw017.survey01	068rw017_rs01.dgn
	068rw017.survey02	068rw017_rs02.dgn
	... Etc.	
Monumentation Staking	(Use next available #)	
Plan & Monumentation	068rw017.survey03	068rw017_rs03.dgn
Survey	068rw017.survey04	068rw017_rs04.dgn
	... Etc.	

Note: The Monumentation Staking Plan will be transformed into the Monumentation Survey sheets at the completion of the final survey.

<u>BIA Application Sheet</u>	068rw017.bia	068rw017_bia.dgn
<u>Construction & topo features</u>		
Existing topography	068rw017.existingtopo	068rw017_topo.dgn
New Construction	068rw017.newconstr	068rw017_cst.dgn
New Drainage	068rw017.newdrainage	068rw017_drn.dgn

File Name Structure



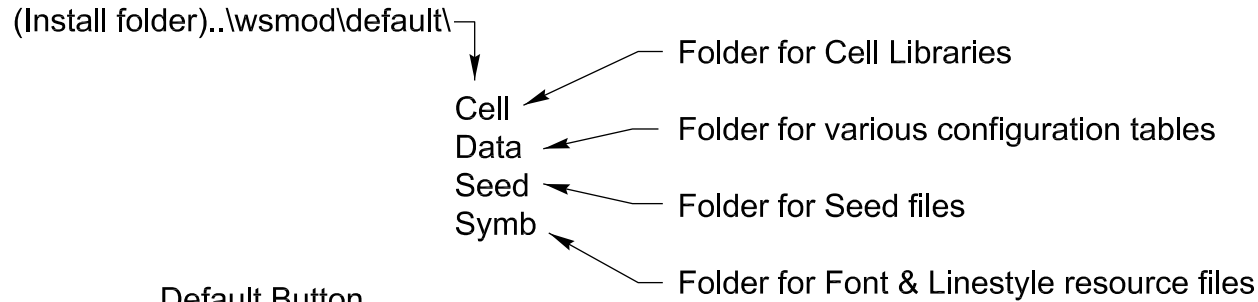
Note:

_vln.dgn, _pln.dgn, _aln.dgn, _acq.dgn and _sln.dgn have been combined into one file _pln.dgn.

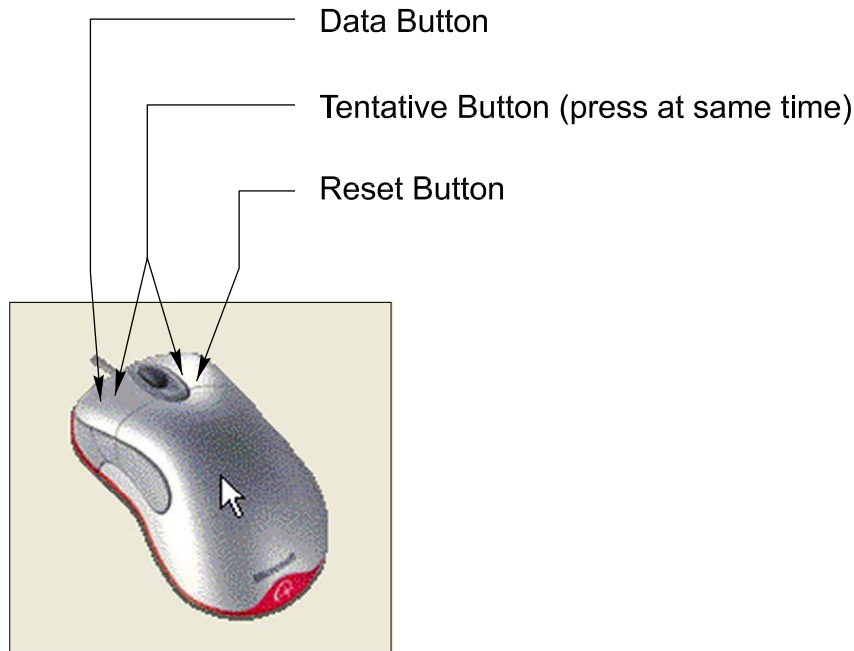
BASIC TERMS & DEFAULT SETTINGS

for MicroStation

Default Resource File Folders



Default Button Assignments



Active Design file = Opened Design file
Active parameter = Active Line, color, etc.
Active Scale = Current Scale of design
Cell Library = A file that is used to store cells
Color Table = Color settings for viewing
Design file = MicroStation document file
Fence = A boundary to manipulate elements
Key In = Command Line
Plotfile = PLT file, Plotter configuration file
Reference file = A design file that is attached
Resource file = Font & Linestyles definitions
Seed file = Used to create new Design files

ADOT RESOURCE FILES

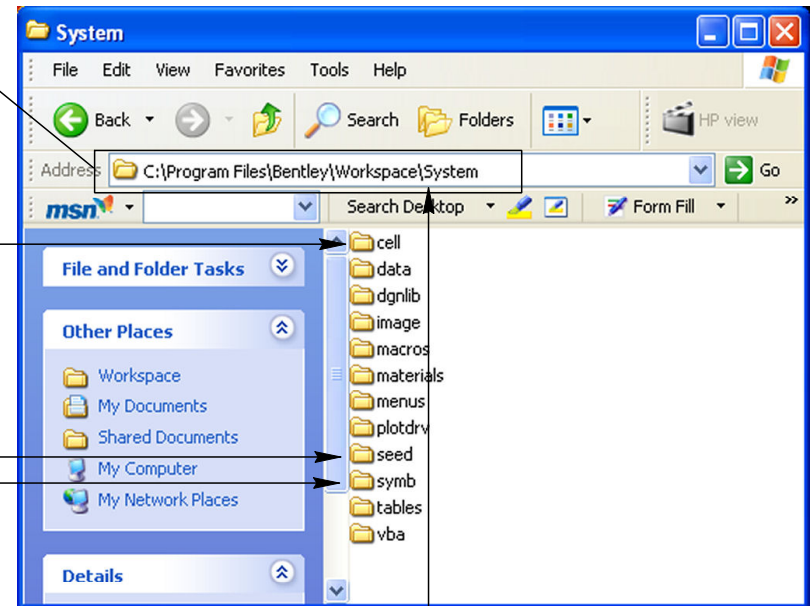
for MicroStation

Required ADOT Resource Files

RW_V8.cel	-	ADOT Cell Library
seed_cvr.dgn	-	Typical Cover Sheet
seed_bdr.dgn	-	Typical Border Sheet
RW_seed.dgn	-	Design Seed File
ADOT_e.rsc	-	ADOT Linestyles
RW_e.rsc	-	Right of Way Linestyles
font.rsc	-	Right of Way Fonts

MicroStation Install Folder.
Not the same on all systems.

Where to copy to:



The Resource Files are available
for download at the following address:
<http://www.azdot.gov/highways/row/rowplans/microstation.asp>

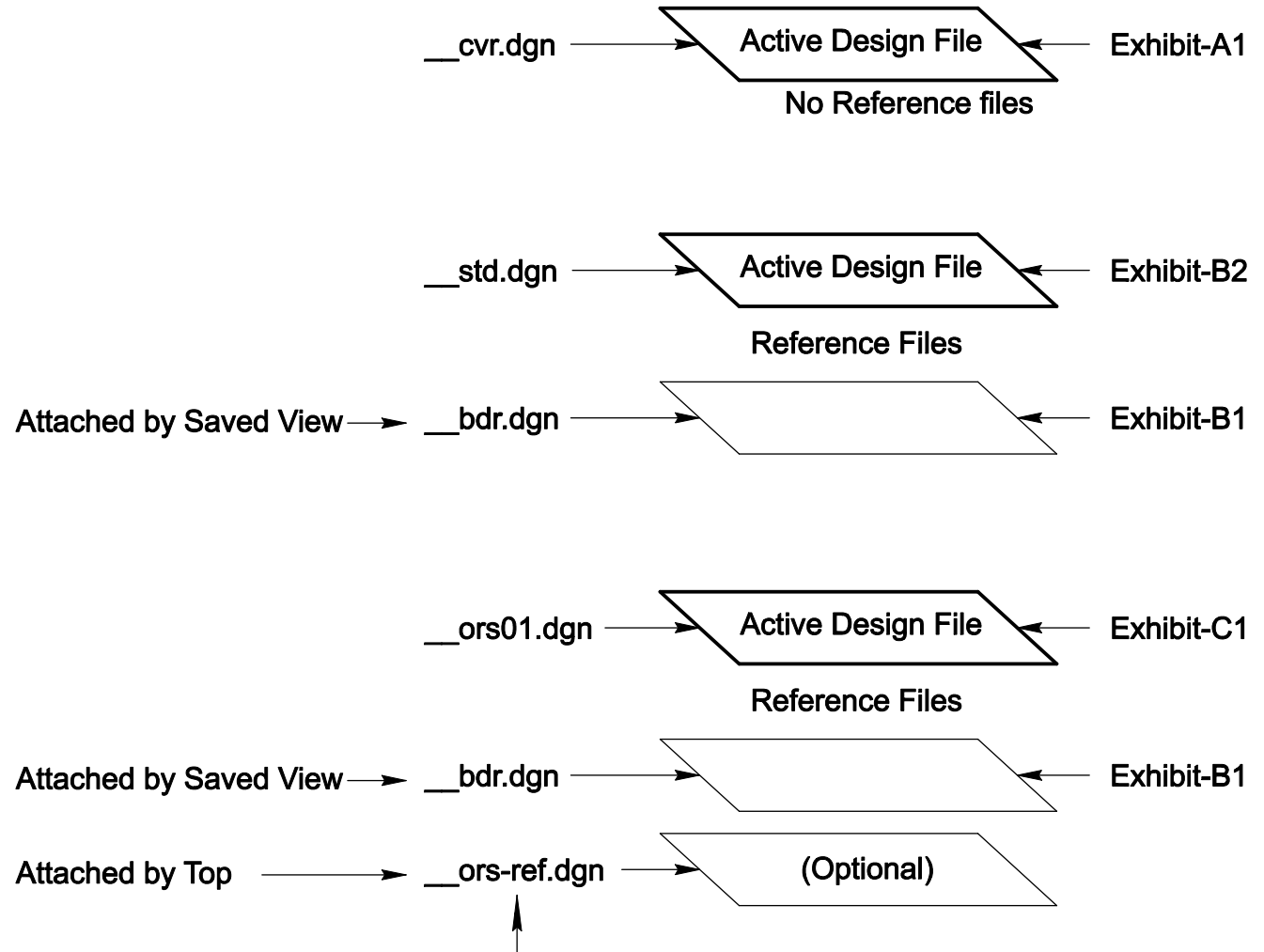
MicroStation default settings folder.
Folders can be changed by setting
various configuration variables in
the Configuration Manager and
startup Profiles.

TYPICAL ADOT PROJECT & REFERENCING for MicroStation

Order of Sheets of a Typical Plan Set

Cover Sheet
Standard Abbreviations & Symbols
Ownership Record Sheet
Vicinity Map Sheet
Index to Existing R/W Sheet
(If not shown on Vicinity Map)
Plan Sheet
Parcel Insert Sheet
(If not shown on Plan Sheet)
Detail Sheet
(If required)
BIA Application Sheet
(If required)
Results of Survey Sheet
(If required)

REFERENCING SCHEME

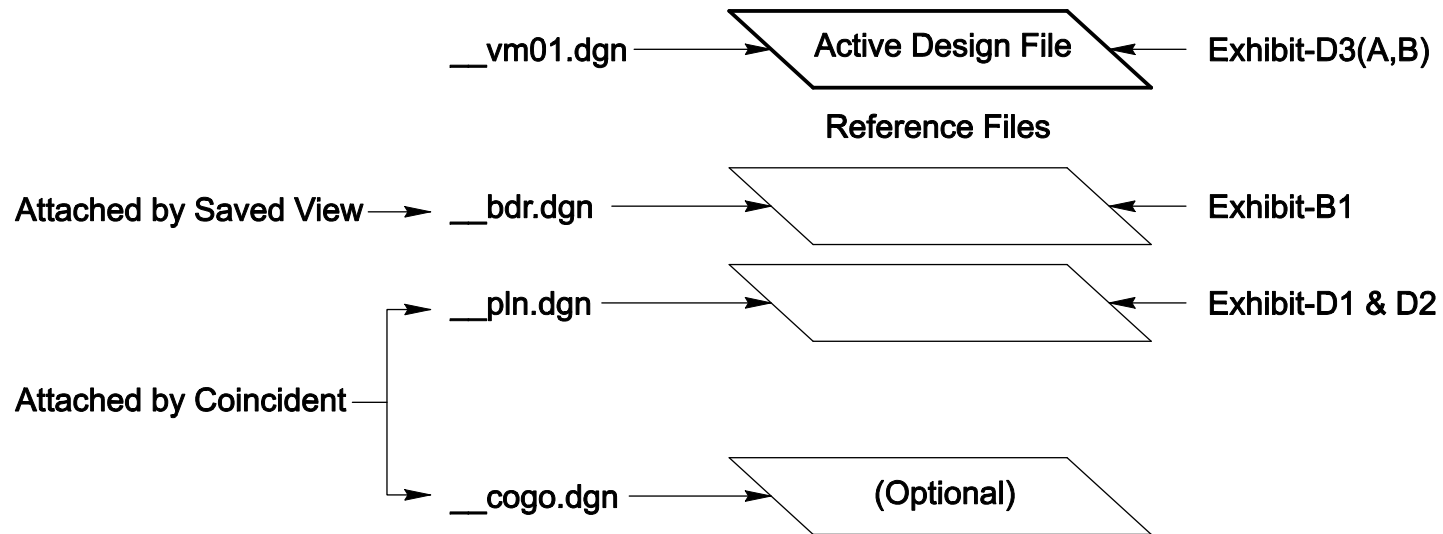


This file is optional and contains all of the Parcels data in one file.
It can be referenced into each ORS dgn file then clipped to only
show the information related to each sheet.

TYPICAL ADOT PROJECT & REFERENCING

for MicroStation

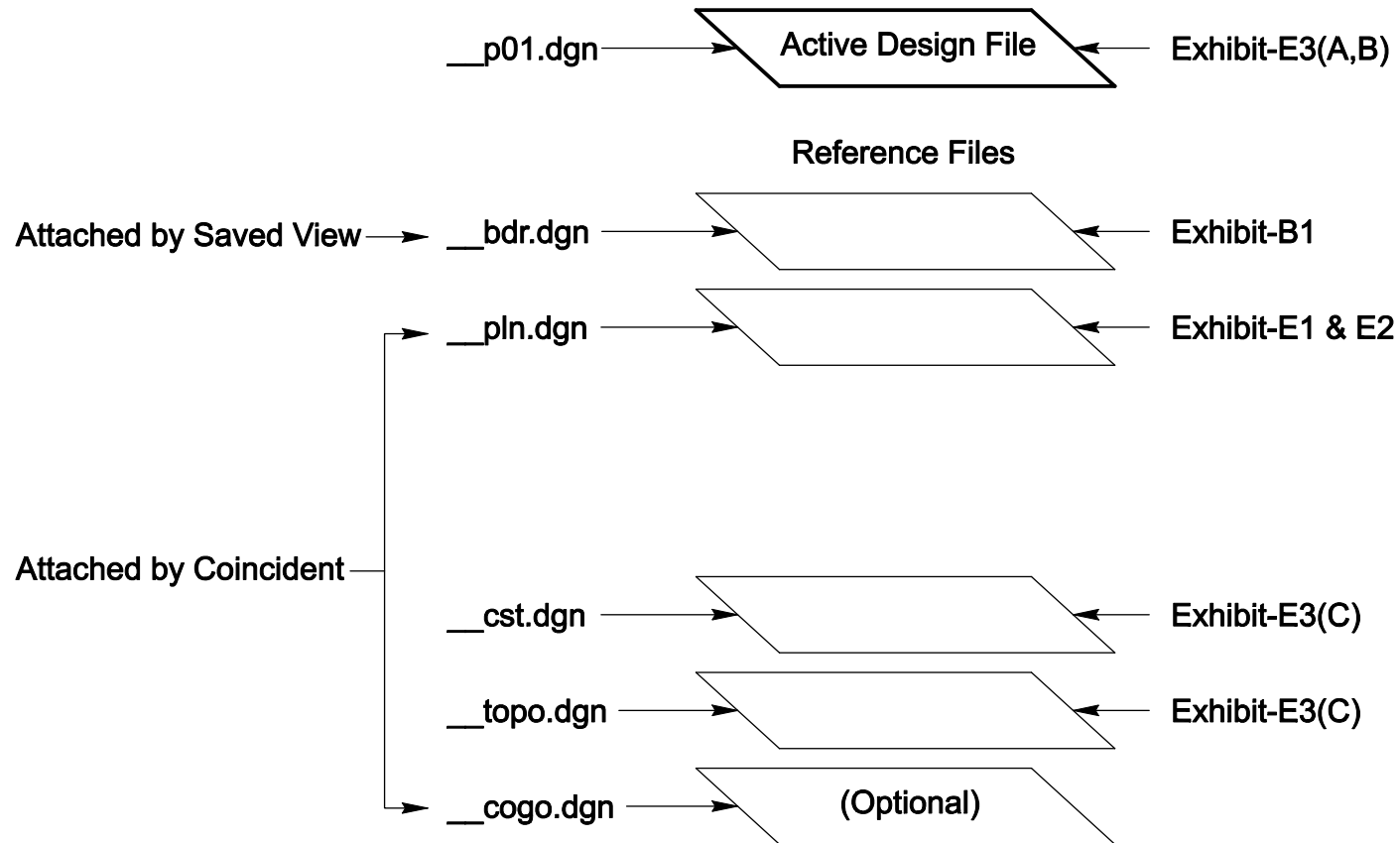
REFERENCING SCHEME



TYPICAL ADOT PROJECT & REFERENCING

for MicroStation

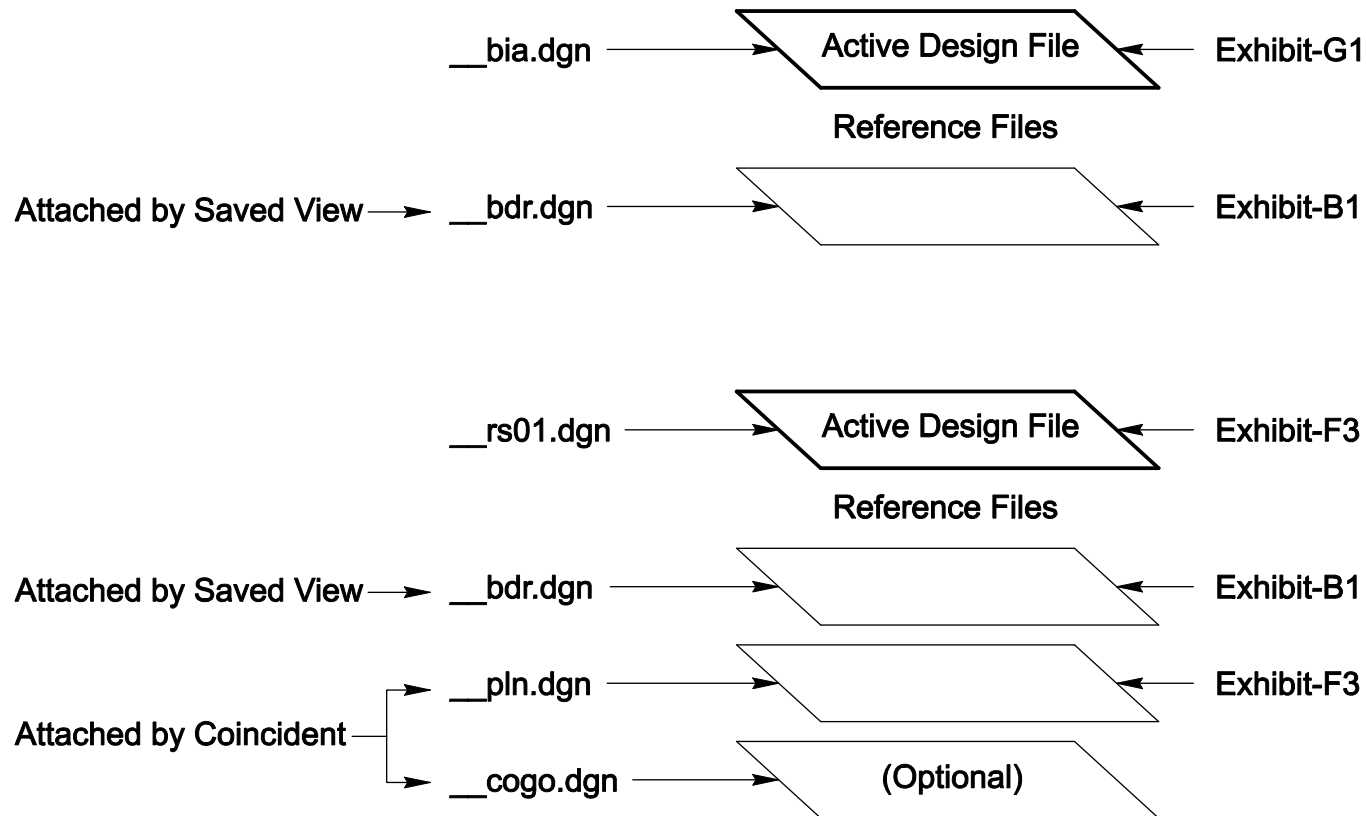
REFERENCING SCHEME



TYPICAL ADOT PROJECT & REFERENCING

for MicroStation

REFERENCING SCHEME



ADOT PROJECT SETUP PROCEDURES

for MicroStation

PROJECT SETUP

Create Project Folder - Use W.O. # or TRACS #
Copy seed_bdr.dgn & seed_cvr.dgn to Project Folder
Rename to ADOT naming scheme (i.e. 085rw138_bdr.dgn)
Create __simpro-gc.dgn design file from Cogo Program

BASE FILES

Open __bdr.dgn design file
Complete Title Block
Create New Design File - __std.dgn
Reference __bdr.dgn then Add RWSTDS cell
Create New Design File - __ors01.dgn
Reference __bdr.dgn then Add CRWORS cell

PLAN FILES

Create New Design File - __pln.dgn
Reference __simpro-gc.dgn then Fit View
Determine Project Limits from Scope
Insert Sheet Outline at scale of Plan sheets
Create New Design file __p01.dgn
Reference __pln.dgn & __simpro-gc.dgn
Rotate View to Sheet Outline
Reference __bdr.dgn

CONSTRUCTION FILES

When available from the Design Consultant
obtain the existing topo and new construction
features. Edit the line styles per Exhibit-E3(C)
Attach to Plan sheets

ROS FILES

Open - __pln.dgn
Reference __simpro-gc.dgn
Insert Sheet Outline at ROS scale
Create New Design File - __rs01.dgn
Reference __pln.dgn
Reference __bdr.dgn

VICINITY FILES

Open __pln.dgn linework file
Insert Sheet Outline for Vicinity Sheets
Create New Design File - __vm01.dgn
Reference __pln.dgn
Rotate View - Reference __bdr.dgn

ALIGNMENT FILES

Open - __pln.dgn
Reference __simpro-gc.dgn
Draw alignment and pattern
Turn level on in Plan sheets

NEW ACQUISITION FILES

Open - __pln.dgn
Reference __simpro-gc.dgn
Draw New R/W, TCE etc.
Turn level on in Plan sheets & Vicinity Map