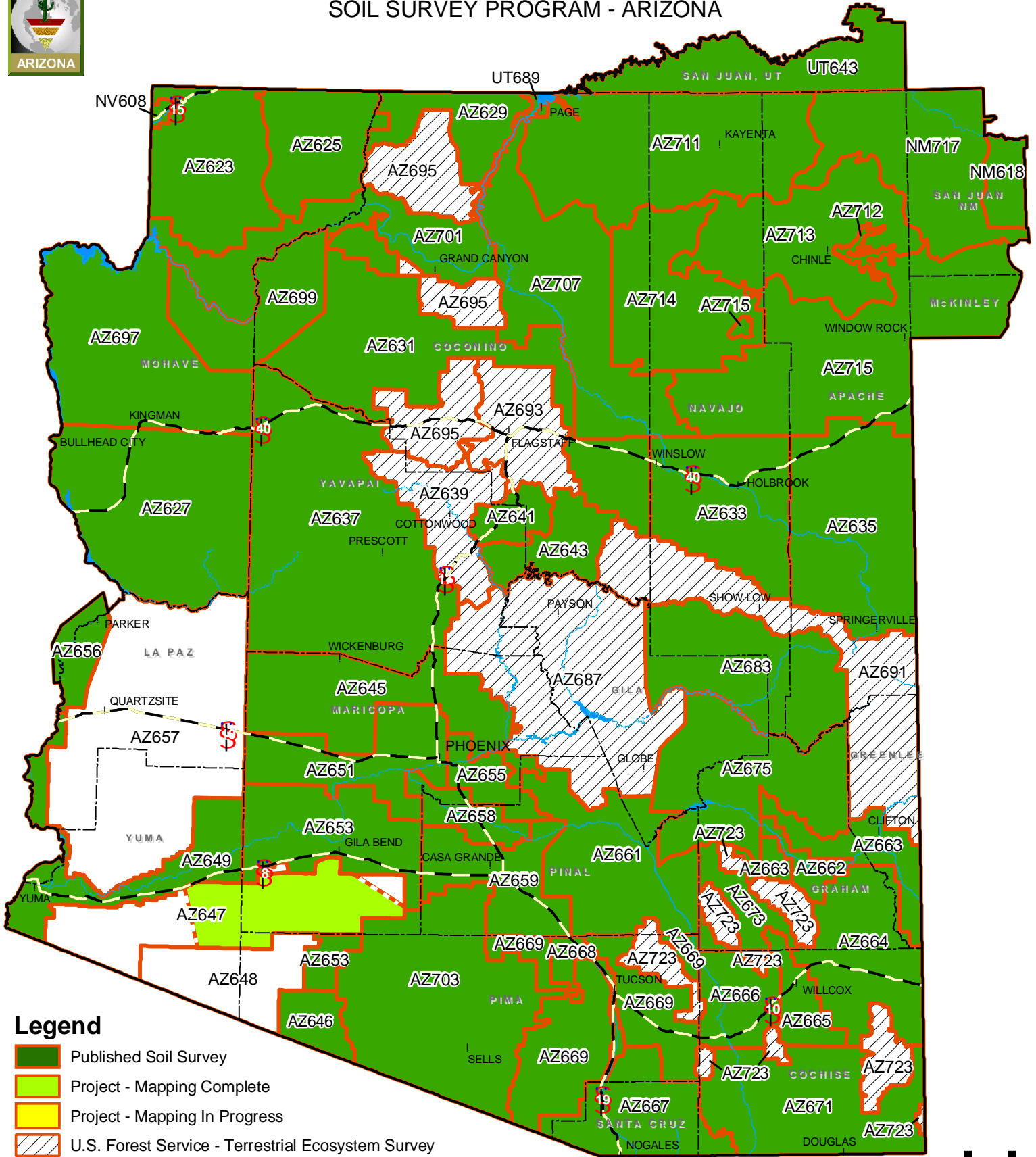




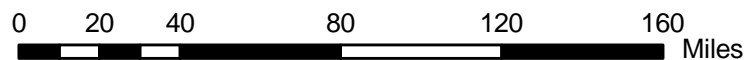
STATUS OF SOIL SURVEYS - PUBLICATION

SOIL SURVEY PROGRAM - ARIZONA



Legend

- Published Soil Survey
- Project - Mapping Complete
- Project - Mapping In Progress
- U.S. Forest Service - Terrestrial Ecosystem Survey
- Mapping and Publication Plans Incomplete
- County Boundary



October 2011



SOIL SURVEY AREAS

Soil Survey Area Name	Approximate Area (Acres)	Soil Survey Area Name	Approximate Area (Acres)
NV608 Virgin River Area, NV-AZ, Parts of Clark and Lincoln Counties, NV and Part of Mohave County, AZ	1,068,616 *9	AZ665 Willcox Area, AZ, Parts of Cochise and Graham Counties	367,370
NM618 San Juan County, New Mexico, Eastern Part	315,800 *6, *11	AZ666 Cochise County, AZ, Northwestern Part	625,000
AZ623 Shivwits Area, AZ, Part of Mohave County	1,547,000	AZ667 Santa Cruz and Parts of Cochise and Pima Counties, AZ	1,098,300
AZ625 Mohave County Area, AZ, Northeastern Part and Part of Coconino County	1,038,145	AZ668 Tucson-Avra Valley Area, AZ	214,100
AZ627 Mohave County, AZ, Southern Part	2,492,300	AZ669 Pima County, AZ, Eastern Part	1,900,000
AZ629 Coconino County Area, AZ, North Kaibab Part	697,780	AZ671 Cochise County, AZ, Douglas-Tombstone Part	1,714,300
AZ631 Coconino County Area, AZ, Central Part	2,314,000	AZ673 Graham County, AZ, Southwestern Part	410,000
AZ633 Navajo County Area, AZ, Central Part	1,504,900	AZ675 San Carlos Indian Reservation, AZ, Parts of Gila and Graham Counties	1,827,421
AZ635 Apache County, AZ, Central Part	2,113,800	AZ683 Fort Apache Indian Reservation, AZ, Parts of Apache, Gila and Navajo Counties	1,664,972
AZ637 Yavapai County, AZ, Western Part	3,774,500	UT689 Glen Canyon National Recreation Area	1,254,306 *12
AZ639 Black Hills-Sedona Area, AZ, Parts of Coconino and Yavapai Counties	824,500 *10	AZ687 Tonto National Forest, AZ, Parts of Gila, Maricopa, Pinal and Yavapai Counties	2,873,295 *10
AZ641 Beaver Creek Area, AZ	302,205	AZ691 Apache-Sitgreaves National Forests, AZ, Parts of Apache, Coconino, Greenlee and Navajo Counties	2,112,320 *10
AZ643 Long Valley Area, AZ	626,623	AZ693 Oak Creek-San Francisco Peaks Area, AZ, Part of Coconino County	859,000 *10
UT643 Navajo Indian Reservation, San Juan County, Utah	1,336,185 *7, *11	AZ695 Kaibab National Forest, AZ, Parts of Coconino, Mohave and Yavapai Counties	1,554,797 *10
AZ645 Aguila-Carefree Area, Parts of Maricopa and Pinal Counties, AZ	1,629,120	AZ697 Mohave County, AZ, Central Part	2,431,200
AZ646 Organ Pipe Cactus National Monument	330,689	AZ699 Hualapai-Havasupai Area, AZ, Parts of Coconino, Mohave and Yavapai Counties	1,180,540
AZ647 Luke Air Force Range, AZ, Parts of Maricopa, Pima and Yuma Counties	1,940,000	AZ701 Grand Canyon Area, AZ, Parts of Coconino and Mohave Counties	1,450,620
AZ648 Cabeza Prieta Area, AZ, Parts of Pima and Yuma Counties	909,311	AZ703 Tohono O'odham Nation, AZ, Parts of Maricopa, Pima and Pinal Counties	2,855,032
AZ649 Yuma-Wellton Area, Parts of Yuma County, AZ, and Imperial County, CA	1,042,429 *1	AZ707 Little Colorado River Area, AZ, Parts of Coconino and Navajo Counties	2,240,000 *11
AZ651 Maricopa County, AZ, Central Part	1,076,330	AZ711 Navajo Mountain Area, AZ, Parts of Apache, Coconino, and Navajo Counties	2,553,933 *11
AZ653 Gila Bend-Ajo Area, AZ, Parts of Maricopa and Pima Counties	1,432,320	AZ712 Canyon de Chelly National Monument, AZ	94,255 *11
AZ655 Eastern Maricopa and Northern Pinal Counties Area, AZ	348,025	AZ713 Chinle Area, Parts of Apache and Navajo Counties, AZ, and San Juan County, NM	1,930,000 *3, *11
AZ656 Colorado River Indian Reservation, Parts of La Paz County, AZ, and Riverside and San Bernardino Counties, CA	268,850 *2	AZ714 Hopi Area, AZ, Parts of Coconino and Navajo Counties	1,561,054
AZ657 Kofa Area, AZ, Parts of La Paz and Yuma Counties	3,806,931	AZ715 Fort Defiance Area, Parts of Apache and Navajo Counties, AZ, and McKinley and San Juan Counties, NM	3,210,000 *4, *11
AZ658 Gila River Indian Reservation, AZ, Parts of Maricopa and Pinal Counties	371,913	NM717 Shiprock Area, Parts of Apache County, AZ and San Juan County, NM	1,835,230 *5, *11
AZ659 Pinal County, AZ, Western Part	937,020	AZ723 Coronado National Forest, AZ, Parts of Cochise, Graham, Pima and Pinal Counties	1,090,135 *10
AZ661 Eastern Pinal and Southern Gila Counties, AZ	1,699,900		
AZ662 Safford Area, AZ	208,500		
AZ663 Gila-Duncan Area, AZ, Parts of Graham and Greenlee Counties	770,000		
AZ664 San Simon Area, AZ, Parts of Cochise, Graham and Greenlee Counties	1,220,996		
		Total:	78,761,613 *8

*1 Total includes 24,817 acres from Imperial County, CA

*2 Total includes 26938 acres from San Bernardino County, CA and 16,000 acres from Riverside County, CA

*3 Total includes 12,200 acres from San Juan County, NM

*4 Bureau of Indian Affairs has responsibility for this area. Total includes 227,000 acres from San Juan County, NM and 549,240 acres from McKinley County, NM

*5 NRCS New Mexico has responsibility for this area. Total includes 780,430 acres from Apache County, AZ

*6 NRCS New Mexico has responsibility for this area. All acres are in San Juan County, NM

*7 NRCS Utah has responsibility for this area. All acres are in San Juan County, UT

*8 Total includes 67,753 acres from California, 2,159,040 acres from New Mexico, 2,590,491 acres from Utah, 72,960,038 acres from Arizona, and 1,031,068 acres from Nevada

*9 NRCS Nevada has responsibility for this area. Total includes 37,548 acres from Arizona

*10 U.S. Forest Service has responsibility for this area

*11 Part of the Navajo Nation

*12 NRCS Arizona has responsibility for mapping this area. Total includes 46,777 acres from Arizona