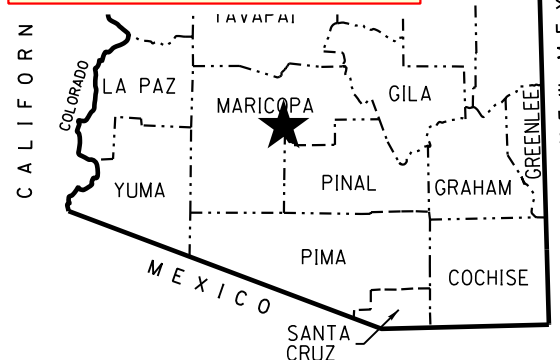


PLAN SHEET NOTES
 SEED FILE: Seed_cvr.dgn
 FILE NAME: --rw---_cvr.dgn
 REFERENCE FILES:
 None
 AA=0 AS=1
 See plotting instructions
 in CADD Standards manual
 for additional details.



★ PROJECT LOCATION
 COUNTY NAME: MARICOPA
 LENGTH OF PROJECT: 3.7 MILES
 ADOT DISTRICT: CENTRAL (C)
 DRAWING NUMBER: D-7-T-909

STAR
 RW_V8.cel
 AC=RWSTAR
 LV=262
 CO=154
 LC=0
 WT=2

DATA FIELD
 LV=262 FT=1
 CO=62 TX=18
 LC=0 ACTIVE
 WT=3 TXJ=LT

SHEET INDEX

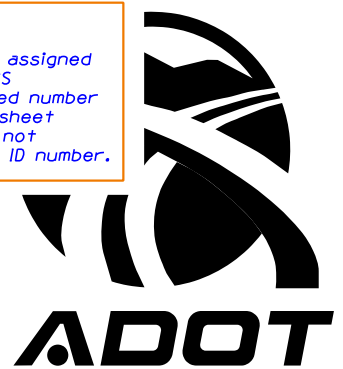
COVER SHEET	1
STANDARD ABBREVIATIONS & SYMBOLS	S-1
OWNERSHIP RECORD SHEET	ORS-1 TO ORS-2
VICINITY MAP SHEET	VM-1 TO VM-2
PLAN SHEET	P-1 TO P-20
PARCEL INSERT SHEET	PAR-1
BIA SHEET	BIA-1
ADVANCE ACQUISITION	AA-1
RESULTS OF SURVEY	RS-1 TO RS-3
SUPPLEMENTAL RESULTS OF SURVEY	SS-1 TO SS-3
RIGHT OF WAY MONUMENTATION SURVEY	MS-1 TO MS-3
TOTAL SHEETS	38

RIGHT OF WAY PLANS OF THE SANTAN FREEWAY

PRICE ROAD - ARIZONA AVENUE

202L MA 003 H5380
 RAM 600-7-802

**ARIZONA DEPARTMENT
OF
TRANSPORTATION**
 INFRASTRUCTURE
 DELIVERY AND OPERATIONS
 DIVISION



② RW_V8.cel
 LT=ARROW
 TS=2
 LV=201
 CO=1
 LC=0
 WT=1

HELPFUL HINTS
 Copy Star from Project
 Location box and place
 on Map at location of
 Project.
 If project is located in
 Greenlee Co. then move
 text and add leader.

CITY-RESERVATION
TEXT
 LV=271 FT=42
 CO=71 TX=20
 LC=0 ACTIVE
 WT=2 TXJ=LT

DITCH-RIVER
RW_e.rsc
 LV=222
 CO=22
 LC=RWRIVR_e
 WT=0
 SCALE FACTOR=1

DATA FIELD
 LV=262 FT=1
 CO=62 TX=47
 LC=0 ACTIVE
 WT=6 TXJ=CB

HELPFUL HINTS
 If the project does not have an assigned
 federal ID number, then the TRACS
 number is the only project related number
 that will be shown on the cover sheet
 and the word 'unassigned' should not
 be shown in place of the federal ID number.

HELPFUL HINTS
 For Rural projects that do
 not lie within a Town or
 City and the nearest Town
 or City does not appear on
 the Cover Sheet Map, A
 distance to the nearest
 mile will be shown in both
 directions to the nearest
 Town or City.

HELPFUL HINTS
 Raster images can be referenced
 and sized to the proper scale for
 purposes of locating lines,
 highways and landmarks. They
 will be detached prior to final
 submittal.

RW_V8.cel
 AC=LOGO
 LV=254
 CO=245/246
 LC=0
 WT=2

LOCATION MAP
 The intent of the Location Map
 is to provide sufficient
 information to allow visiting the
 site without the aid of additional
 maps. The Scale of 1"=5000'
 will be used unless otherwise
 approved by ADOT. Township
 and Range lines will be shown.
 Section lines will be shown
 around the project location. All
 major highways and landmarks
 will also be shown. Additional
 information may be required as
 directed by ADOT. No raster
 images will be shown.

**① Text for plotting of file
name using a Pen Table with
Text Substitution. See
plotting instructions in
the CADD Standards manual.**

RAILROAD
ADOT_e.rsc
 LV=211
 CO=11
 LC=ARR100_e
 WT=2
 SCALE FACTOR=1

DATA FIELD
 LV=262 FT=1
 CO=62 TH=16
 LC=0 TW=14
 WT=3

APPROVED IN ACCORDANCE WITH
 ARIZONA STATE TRANSPORTATION BOARD
 RESOLUTION 2001-03-A-017 DATED 3-16-01
 RESOLUTION 2001-09-A-068 DATED 9-14-01

HELPFUL HINTS
 Edit text to add additional
 resolutions as needed.

HELPFUL HINTS
 Create a Block or closed complex
 element 20' in width based on the
 plan sheet scale of 1"=100' so that
 the Project Location is easily
 identifiable.

①
 ...\\exhibit\AL_cvr.dgn

PRELIMINARY
 NOT FOR
 CONSTRUCTION
 OR RECORDING
 --Created--
 12/12/16
 10:15:37 AM

EXHIBIT-A1
 ADOT CADD STANDARDS 2016

101L MA 059 H2222 03R
 RAM 600-1-728

202L MA 003 H5380 01R
 RAM 600-7-802

202L MA 006 H5381 01R
 RAM 600-7-803

HUBBARD ENGINEERING
 480-892-3313
 Gilbert, AZ
 jcrume@hubbard-engineering.com