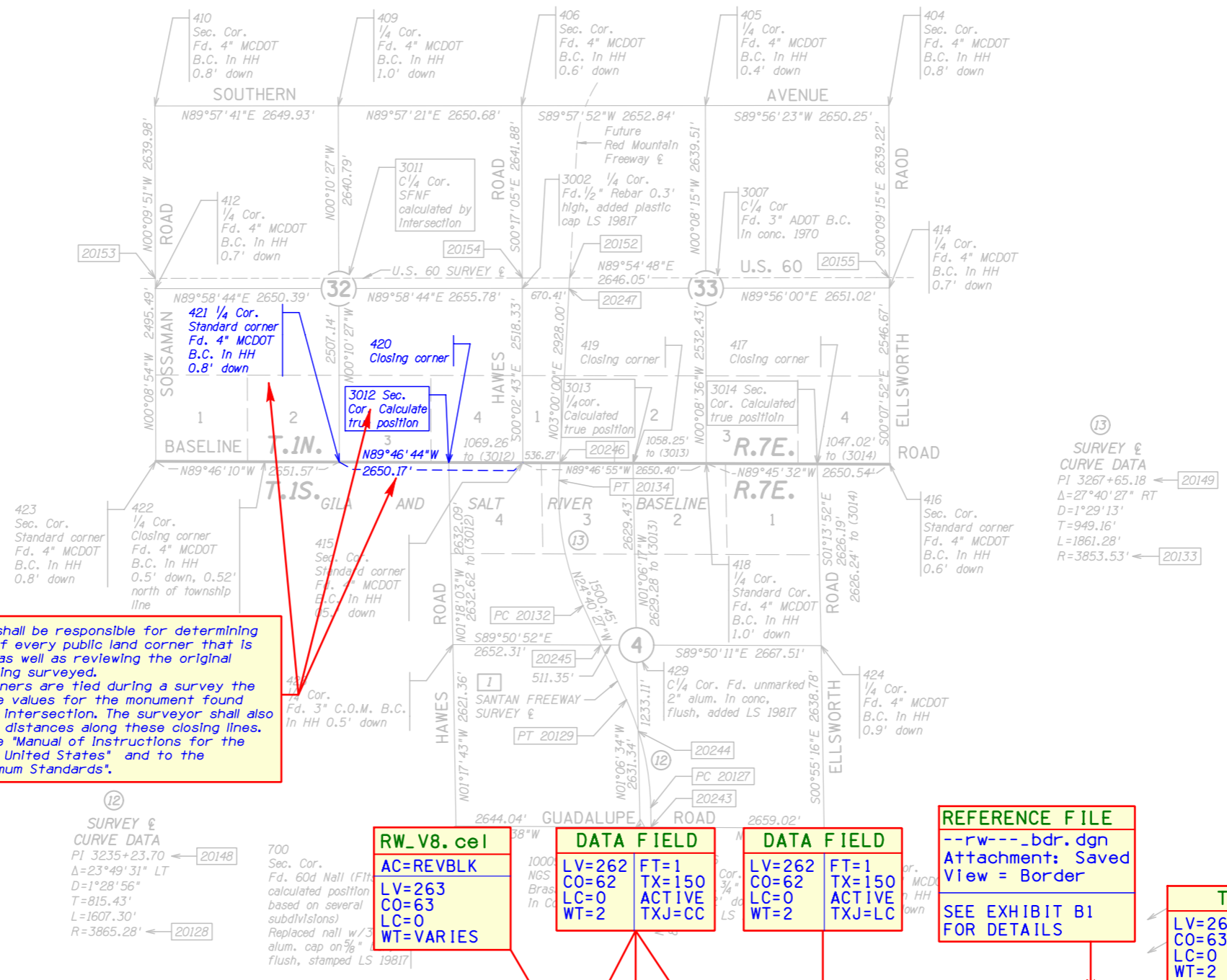


RESULTS OF SURVEY



MARICOPA CO.

- 417 - Closing corner, Fd. 4" MCDOT B.C. In H.H., 1.0' down, 0.33' south of calculated true position
- 419 - Closing corner, Fd. 4" MCDOT B.C. In H.H., 0.6' down, 0.42' North of calculated true position
- 420 - Closing corner, Fd. 4" MCDOT B.C. In H.H., 0.8' down, 0.35' south of calculated true position



The Land Surveyor In charge shall be responsible for determining the proper use and position of every public land corner that is recovered during the survey as well as reviewing the original survey notes for the area being surveyed. For example: Where closing corners are tied during a survey the surveyor shall show coordinate values for the monument found and coordinates for the true intersection. The surveyor shall also show the correct bearing and distances along these closing lines. The survey will conform to the "Manual of Instructions for the Survey of Public Lands of the United States" and to the "Arizona Boundary Survey Minimum Standards".

PLAN SHEET NOTES
 SEED FILE: 2DSeed.dgn
 FILE NAME: --rw--_rs02.dgn
 REFERENCE FILES:
 --rw--_bdr.dgn
 --rw--_pln.dgn
 AA=0 AS=10 RV=As needed
 See plotting instructions in CADD Standards Manual for additional details.

RW_V8.cel
 AC=REVBLK
 LV=263
 CO=63
 LC=0
 WT=VARIES

DATA FIELD
 LV=262 FT=1
 CO=62 TX=150
 LC=0 ACTIVE
 WT=2 TXJ=CC

DATA FIELD
 LV=262 FT=1
 CO=62 TX=150
 LC=0 ACTIVE
 WT=2 TXJ=LC

REFERENCE FILE
 --rw--_bdr.dgn
 Attachment: Saved
 View = Border
 SEE EXHIBIT B1 FOR DETAILS

DATA FIELD
 LV=225 FT=23
 CO=25 TX=120
 LC=0 ACTIVE
 WT=3 TXJ=CB

TEXT
 LV=263 FT=1
 CO=63 TX=100
 LC=0 ACTIVE
 WT=2 TXJ=LB

RW_V8.cel
 AC=SCALE
 LV=225
 CO=25
 LC=0
 WT=3

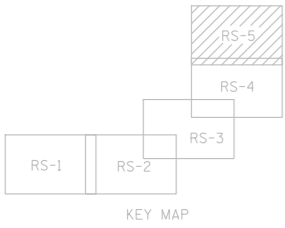


EXHIBIT-F7 ADOT CADD STANDARDS 2006

CHANGE ORDER REVISIONS			
C.O. NO.	DATE	BY	DESCRIPTION OF REVISIONS
3046	6-9-00	JC	Revised SW Cor Sec. 4

HELPFUL HINTS
 NOTE:
 All parameters shown on this sheet are relative to the plan scale of 1"=1000'

DRAWING NO. D-7-T-866	ARIZONA DEPARTMENT OF TRANSPORTATION INTERMODAL TRANSPORTATION DIVISION RIGHT OF WAY PLANS SECTION	
SURVEY APRIL 1999	HIGHWAY NAME: SANTAN FREEWAY	PRELIMINARY NOT FOR CONSTRUCTION OR RECORDING
DRAWN/DATE J. Crume/Sep 01	FEDERAL AID NO.: RAM 600-7-801	--Created-- 1/5/2007 10:09:59 AM
ADOT REVIEW B. Gurney	PROJECT NO.: 202L MA 000 H5325 OIR	SHEET RS-5
ROUTE NO.: SR 202L	LOCATION: Jct. S.R. 101L - Jct. U.S. 60	