

FY 2009 Section 5311 Rural Public Transportation Program Annual Report



Arizona Department of Transportation
Multimodal Planning Division
Community Grant Services

Introduction

The role of Community and Grant Services within the Multimodal Planning Division of the Arizona Department of Transportation (ADOT) is to ensure a multimodal approach to mobility, congestion and air quality issues throughout the State. Community and Grant Services staff administers several Federal Transit Administration grant programs, provides technical assistance and expertise to local transit agencies and decision makers, coordinates and funds state transit and rail planning efforts, and sets and monitors light rail system safety standards. The Federal Transit Administration provides funding to support rural public transit systems to serve communities with under 50,000 population. ADOT distributes a percentage of funds to cities, towns, and Native American tribes to operate these systems at the local level. The Community and Grant Services staff is responsible for overall state administration of the Section 5311 program.

The Section 5311 Rural Public Transportation Program provides program funds for capital, operating, and administrative assistance to local public bodies, non-profit organizations, and operators of public transportation services in non-urbanized areas. The program is funded by the FTA through federal apportionments to the Governor of each state and is based solely on each states non-urbanized population.

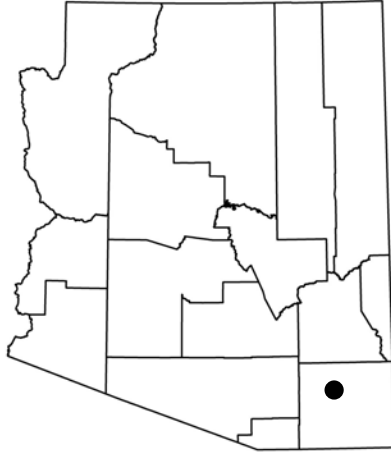
This program also provides technical assistance through local transit studies as well as training opportunities for rural transit administrators. The program assists in the maintenance, development, improvement, and use of public transportation system in rural and small urban areas.

The FY 2009 Section 5311 Annual Report provides an overview of the operating and cost data characteristics of the transit agencies that participated in Arizona's Section 5311 program for the period October 1, 2008 through September 30, 2009. Two rural communities, Benson and Chino Valley will join the program in 2010. The operating and financial data for this directory was obtained from each transit agency through a monthly billing process that includes submission of service data and program costs. The program summary on the last page provides ridership, project miles, vehicle service hours, administration and net operating cost, and performance data for each transit agency as well as a total for the group.

Approximately 3.8 million miles of transportation service are provided annually to 1,193,144 passengers. Over 200,943 hours of service are provided by these systems to enhance the access of people in rural communities to health care, shopping, education, employment, public services & recreation. In some regions, the ADOT special needs and rural programs represent the only transit service available to local communities.

Prepared September 2010

Legislative District: 25
Congressional District: 8
SouthEastern Arizona Governments Association (SEAGO)
Transportation Board District: 3



GENERAL DESCRIPTION

City of Benson Bus

In July 2010, the City of Benson assumed operation of transit services in the greater Benson area to the elderly and disabled Monday to Friday, 8 am to 3:30 pm. One vehicle provides 7,600 rides annually. The service, previously operated by Catholic Community Services under a FTA Section 5310 grant, will transition to FTA Section 5311 in October 2010. It is anticipated that a second vehicle, operating on a deviated fixed route, will be in service in early 2011. At that time, service will be open to the general public.

Primary Contact:

Denise Wolford
120E. 6th Street
Benson, AZ 85602
Phone: 520.720.6329
E-mail: dwolford@cityofbenison.com
Website: www.cityofbenison.com

Agency Type: Municipality
Type of Service: Rural

SERVICE DATA

Service provided under FTA Section 5310 (Elderly and Disabled) funding until July 2010.

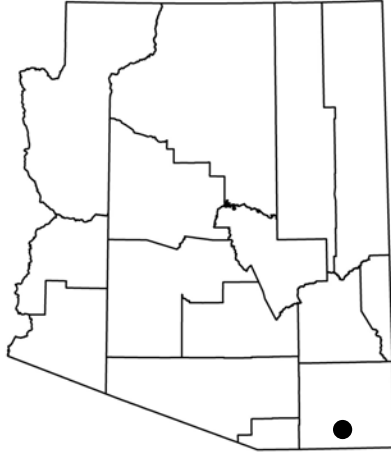
Operated by Catholic Community Services from offices in Douglas.

FLEET DATA

COST DATA

First FTA Section 5311 (General Public) funding to be available October 1, 2010.

Legislative District: 25
 Congressional District: 8
 SouthEastern Arizona Governments Association (SEAGO)
 Transportation Board District: 3



GENERAL DESCRIPTION

The Bisbee Bus

The Bisbee Bus operates a fixed route service that will deviate up to three quarters of a mile for clients with special needs and the elderly. The service area includes Old Bisbee, Warren, San Jose and the Naco area. Service connecting the Bisbee Bus to the Cochise Commuter, operating between Douglas/Bisbee and Sierra Vista, was suspended in January 2010 due to lack of local match funds.

Primary Contact:

Lisa Marra
 Administrative Assistant
 118 Arizona Street
 Bisbee, AZ 85603
 Phone: 520.432.6269
 E-mail: lmarra@cityofbisbee.com
 Website: www.cityofbisbee.com/dept_comdev.html

Bisbee Bus Contractor:
 Catholic Community Services
 Connie Gastelum
 Phone: 520.364.4330
 E-mail: connieg@ccs-seaz.org

Agency Type: Municipality
Type of Service: Rural

SERVICE DATA

Service days per week 6
 Annual project miles 78,447
 Annual service hours 3,591
 Annual passenger trips 24,203
 Fares Collected \$7,641

OPERATING DATA

Cost/passenger trip \$8.99
 Cost/project mile \$2.78
 Cost/service hour \$60.62
 Passengers/project mile 0.31
 Passengers/service hour 6.7

FLEET DATA

(Including Wheelchair Stations/Jump Seats)

16 to 24 passengers 2
 25 passengers or more 1

COST DATA

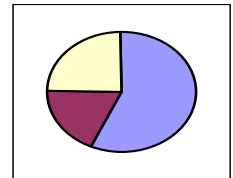
Capital
 \$73,997

Administration
 \$52,739

Operating:
 Federal - \$95,680
 Local - \$69,285

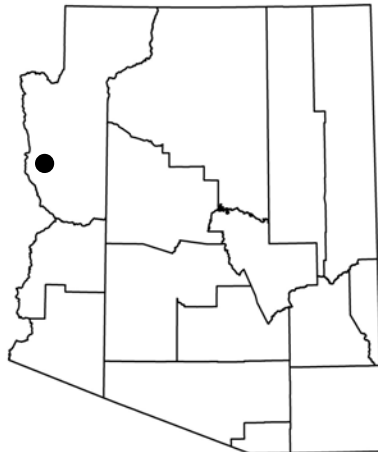
Administration:
 Federal - \$42,191
 Local - \$10,548

Capital:
 Federal - \$68,817
 Local - \$ 5,180



Net Operating
 \$164,965

Legislative District: 3
 Congressional District: 2
 Western Arizona Council of Governments (WACOG)
 Transportation Board District: 6



GENERAL DESCRIPTION

Bullhead Area Transit Service

The BATS transit service operates fixed route with complementary paratransit dial a ride demand response system. The deviated fixed route system operates three routes. Route 1 (Red) operates North/South along the Highway 95 corridor. Route 2 (Blue) operates West/East in the Riviera area of the city serving major shopping and medical centers. Route 3 (Green) provides service to north residential areas and connections to medical services. The dial a ride service operates throughout the Bullhead City limits.

Primary Contact:

Rob LaFontaine
 Transit Coordinator
 1255 Marina Blvd.
 Bullhead City, AZ 86442
 Phone: 928.763.9400 X374
 E-mail: transit1@bullheadcity.com
 Website: www.bullheadcity.com/transit

Agency Type: Municipality
Type of Service: Rural

SERVICE DATA

Service days per week6
 Annual project miles294,893
 Annual service hours20,906
 Annual passenger trips171,850
 Fares Collected\$182,975

OPERATING DATA

Cost/passenger trip\$5.04
 Cost/project mile\$2.94
 Cost/service hour\$41.47
 Passengers/project mile0.58
 Passengers/service hour8.2

FLEET DATA

(Including Wheelchair Stations/Jump Seats)

15 Passengers or less2
 16 to 24 passengers4
 25 passengers or more1
 Service/Supervisor vehicles1

COST DATA

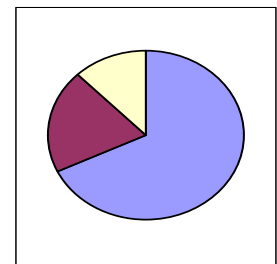
Capital
 \$120,978

Administration
 \$198,510

Operating:
 Federal - \$387,402
 Local - \$280,533

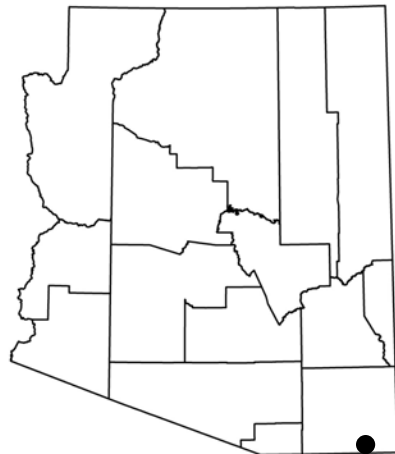
Administration:
 Federal - \$158,808
 Local - \$39,702

Capital:
 Federal - \$96,782
 Local - \$24,196



Net Operating
 \$667,935

Legislative District: 25
 Congressional District: 8
 Southeastern Arizona Governments Organization (SEAGO)
 Transportation Board District: 3



GENERAL DESCRIPTION

Douglas Rides

Catholic Community Services (CCS) operates Douglas Rides, a deviated fixed route transit service in the City of Douglas and a dial-a-ride service for passengers with special needs. Dial-a-Ride service requires 24 hour advance reservation. The Douglas Rides service began December 2006 and operates three routes with a total of 59 stops throughout the City of Douglas.

The Cochise Commuter, service between the City of Douglas, Bisbee and Sierra Vista, was suspended in January 2010 due to lack of local match funding

Primary Contact:

Connie Gastelum
 Transportation Program Manager
 1445 E. 15th Street
 Douglas, AZ 85607
 Phone: 520.364.4474
 E-mail: connieg@ccs-seaz.org
connieg@theriver.com

Agency Type: Non-Profit
Type of Service: Rural

SERVICE DATA

Service days per week6
 Annual project miles90,357
 Annual vehicle service hours.....6,387
 Annual passenger trips24,541
 Fares collected\$16,120

OPERATING DATA

Cost/Passenger trip.....\$11.48
 Cost/Project mile.....\$3.12
 Cost/Service hour.....\$44.11
 Passengers/project mile.....0.27
 Passengers/service hour.....3.8

FLEET DATA

26 Foot Passenger Bus 1
 22 Foot Passenger Bus 1
 19 Foot Passenger Bus 2

COST DATA

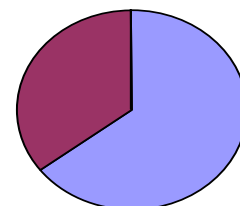
Capital
 \$0

Administration
 \$67,681

Operating:
 Federal - \$124,156
 Local - \$89,906

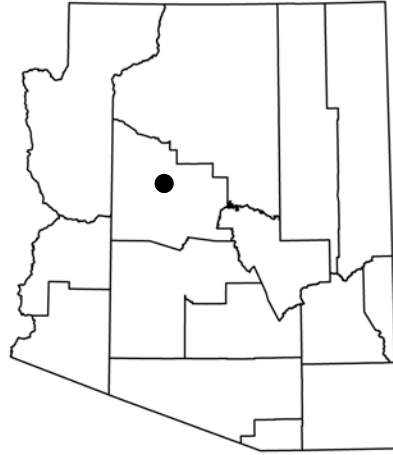
Administration:
 Federal - \$54,145
 Local - \$13,536

Capital:
 Federal - \$0
 Local - \$0



Net Operating
 \$214,062

Legislative District: 1
Congressional District: 1
Central Yavapai Metropolitan Planning Organization (CYMPO)
Transportation Board District: 6



SERVICE DATA

Initial funding from Section 5311 to begin in October 2010.

GENERAL DESCRIPTION

The recommended service plan for Chino Valley provides for 24-hours of transit service weekly. Service will be available four days from 8 AM until 2 PM. Local demand response service would be operated two days a week (Tuesday and Thursday are suggested) from 8 AM to 2 PM and Monday and Wednesday from 10:00 AM – 11:30 AM and from 1:30 PM -2:00 PM. Regional trips to Prescott would be operated on Monday and Wednesday with one morning departing at 8 AM and one mid-day trip departing at 11:30 AM. In Prescott, this service will deviate along the route to pick-up and drop-off passengers.

Primary Contact:

Jason Kelly
Park and Recreation
PO Box 406
Chino Valley, AZ 86323
Phone: 928-636-9780
E-mail: Parks_rec@chinoaz.net

Agency Type: Non-Profit
Type of Service: Rural

Legislative District: 23
 Congressional District: 1
 Central Arizona Association of Governments (CAAG)
 Transportation Board District: 4



GENERAL DESCRIPTION

COTTON EXPRESS

The Cotton Express Transit service operates fixed route and dial a ride service. The fixed route is operated with a West and East Central Loops, each taking thirty minutes traveling north and south along Arizona Blvd. Each route serves residential areas to the east and west of this main corridor in Coolidge. Dial a ride service is for clients with special needs due to age or disability.

In August 2010, *Pinal Central Xpress* service was started providing regional connections between Florence, Coolidge, and Casa Grande.

Primary Contact:

Marcus Hoffman
 Transit Manager
 395 W. Palo Verde Ave.
 Coolidge, AZ 85218
 Phone: 520.723.6085
 E-mail: mhoffman@coolidgeaz.com
 Website: www.coolidgeaz.com

Agency Type: Municipality
Type of Service: Rural

SERVICE DATA

Service days per week5
 Annual project miles88,194
 Annual vehicle service hours.....5,907
 Annual passenger trips19,855
 Fares collected\$21,929

OPERATING DATA

Cost/Passenger trip.....\$22.77
 Cost/Project mile.....\$5.13
 Cost/Service hour.....\$76.53
 Passengers/project mile.....0.23
 Passengers/service hour.....3.4

FLEET DATA

(Including Wheelchair Stations/Jump Seats
 16 to 24 passengers.....5

COST DATA

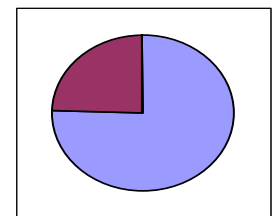
Capital
 \$0

Administration
 \$111,147

Operating
 Federal - \$197,748,
 Local - \$143,197

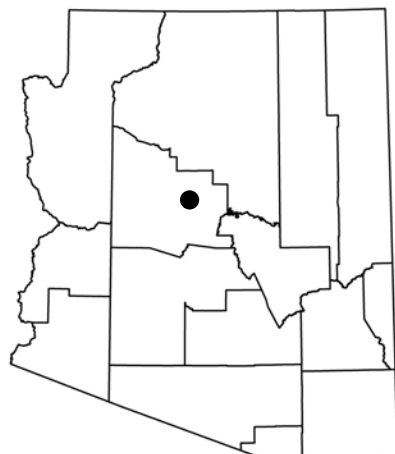
Administration
 Federal - \$88,918
 Local - \$22,229

Capital
 Federal - \$0
 Local - \$0



Net Operating
 \$340,945

Legislative District: 1
Congressional District: 1
Northern Arizona Council of Governments (NACOG)
Transportation Board District: 6



GENERAL DESCRIPTION

Cottonwood Area Transit System - CATS

Cottonwood Area Transit CAT has three (3) fixed bus routes serving the communities of Cottonwood, Clarkdale and Verde Village. Routes connect on the hour at Garrison Park where riders can transfer from one bus route to another without waiting. [Route 1](#) (Blue Route) Serves Central Cottonwood; [Route 2](#) (Green Route) Connects Cottonwood to Verde Village; [Route 3](#) (Red Route) Connects Cottonwood to Clarkdale. Buses run from 7:00 AM - 6:00 PM Monday thru Friday and serve signed bus stops located all along the routes. CAT Dial-a-Ride provides curb-to-curb transportation for persons with disabilities who are unable to use the CAT fixed route buses and is available to riders who are more than a 1/2 mile from a fixed route bus stop.

Primary Contact:
 Shirley Scott
 Transit Manager
 827 North Main Street
 Cottonwood, AZ 86326
 Phone: 928.634.2287
 E-mail: sscott@ci.cottonwood.az.us
 Website: www.ci.cottonwood.az.us

Agency Type: Municipality
Type of Service: Rural

SERVICE DATA

Service days per week 6
 Annual project miles 223,399
 Annual service hours 16,489
 Annual passenger trips 50,521
 Fares Collected \$180,554

OPERATING DATA

Cost/passenger trip \$12.00
 Cost/project mile \$2.71
 Cost/service hour \$36.77
 Passengers/project mile 0.23
 Passengers/service hour 3.1

FLEET DATA

(Including Wheelchair Stations/Jump Seats)
 15 Passengers or less 9

COST DATA

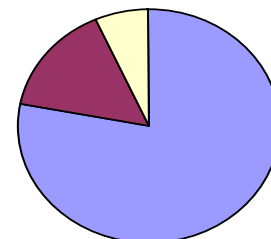
Capital
 \$46,501

Administration
 \$129,533

Operating
 Federal - \$276,521
 Local - \$222,240

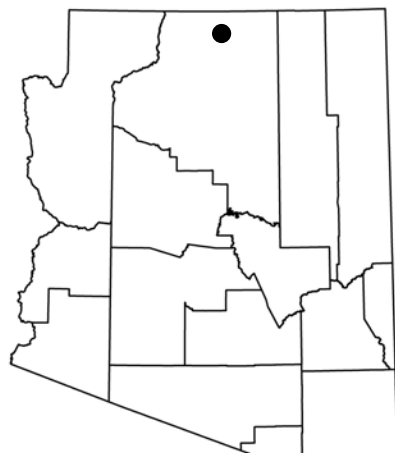
Administration
 Federal - \$103,626
 Local - \$25,907

Capital
 Federal - \$37,201
 Local - \$9,300



Net Operating
 \$476,761

Legislative District: 3
 Congressional District: 1
 Northern Arizona Council of Governments (NACOG)
 Transportation Board District: 5



GENERAL DESCRIPTION

The EXPRESS, City of Page

The Helping Hands Agency provides public transportation known as the EXPRESS. The EXPRESS provides a deviated fixed route service that operates on six separate routes with a total of 60 stops at commercial, social service agencies, senior and assisted living homes, and employment centers in and around the City of Page.

Primary Contact:

Wayne Schugart
 Transit Supervisor
 Cynthia Kokasko
 Executive Director
 645 N Navajo
 Page, AZ 86040
 Phone: 928.645.9596
 E-mail: cynthia@helpinghandsagency.com

Agency Type: Non-Profit

Type of Service: Rural

SERVICE DATA

Service days per week 5
 Annual project miles 285,258
 Annual service hours 11,300
 Annual passenger trips 27,397
 Fares Collected \$17,250

OPERATING DATA

Cost/passenger trip \$16.77
 Cost/project mile \$1.61
 Cost/service hour \$40.53
 Passengers/project mile 0.10
 Passengers/service hour 2.4

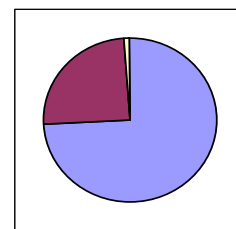
FLEET DATA

(Including Wheelchair Stations/Jump Seats)
 15 Passengers or less 6

COST DATA

Capital
 \$4,790

Administration
 \$116,223



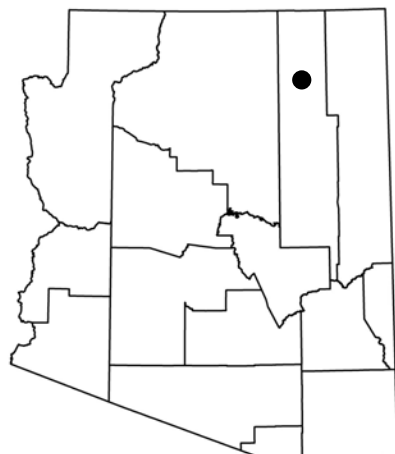
Net Operating
 \$341,768

Operating
 Federal - \$198,225
 Local - \$143,543

Administration
 Federal - \$92,978
 Local - \$23,245

Capital
 Federal - \$4,455
 Local - \$335

Northern Arizona Council of Governments (NACOG) Transportation Board District: 5



GENERAL DESCRIPTION

Hopi Senom Transit

The Hopi Senom Transit System operates two fixed routes servicing medical, employment, commercial, human service programs, and low income or public housing locations to and from Keams Canyon, Moencopi, Flagstaff, Tuba City and Kykotsmovi. The transit service also provides vanpool type service between Flagstaff and Kykotsmovi.

Primary Contact:

Judy Polingyumtewa
Transit Manager
PO Box 123
1 Main Street
Kykotsmovi, AZ 86039
Phone: 928.734.3231
E-mail: hopi5311@yahoo.com

Agency Type: Indian Tribe
Type of Service: Rural

SERVICE DATA

Service days per week 5
Annual project miles..... 204,507
Annual service hours 4,022
Annual passenger trips..... 7,848
Fares Collected \$18,916

OPERATING DATA

Cost/passenger trip..... \$27.77
Cost/project mile..... \$1.07
Cost/service hour \$54.18
Passengers/project mile..... 0.04
Passengers/service hour 2.0

FLEET DATA

(Including Wheelchair Stations/Jump Seats)
15 Passengers or less.....4

COST DATA

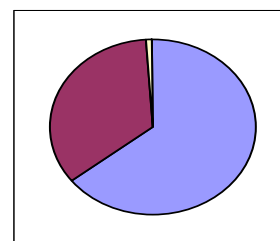
Capital
\$2,000

Administration
\$76,696

Operating
Federal - \$81,910
Local - \$59,314

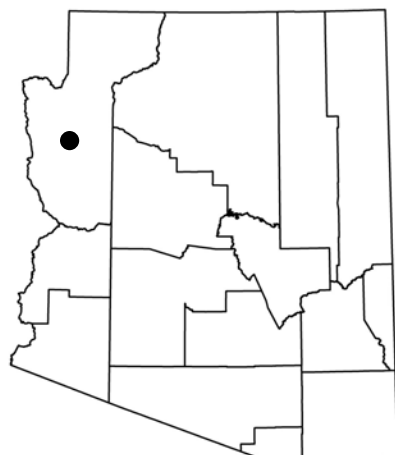
Administration
Federal - \$61,357
Local - \$15,339

Capital Budget
Federal - \$1,600
Local - \$400



Net Operating
\$141,224

Legislative District: 3
 Congressional District: 2
 Western Arizona Council of Governments (WACOG)
 Transportation Board District: 6



GENERAL DESCRIPTION

Kingman Area Regional Transit - KART

The Kingman Area Regional Transit system operates a deviated route system on four routes with dial a ride service for the elderly and disabled in the City of Kingman and greater Kingman-Butler area. The deviated route service has 78 stops throughout the City of Kingman providing a connection with medical, employment, commercial, and education centers.

Primary Contact:

Laura Henry
 Transit Manager
 3700 East Andy Devine Ave
 Kingman, AZ 86401
 Phone: 928.692.3103
 E-mail: lhenry@CityofKingman.gov
 Website: www.CityofKingman.gov/Kart

Agency Type: Municipality

Type of Service: Rural

SERVICE DATA

Service days per week	6
Annual project miles	259,884
Annual service hours	18,809
Annual passenger trips	120,016
Fares Collected	\$112,873

OPERATING DATA

Cost/passenger trip	\$6.05
Cost/project mile	\$2.80
Cost/service hour	\$38.62
Passengers/project mile	0.46
Passengers/service hour	6.4

FLEET DATA

(Including Wheelchair Stations/Jump Seats)
 15 Passengers or less.....10

COST DATA

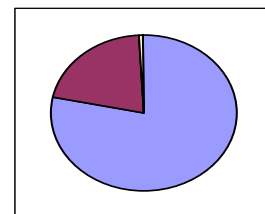
Capital
 \$6,338

Administration
 \$140,919

Operating
 Federal - \$339,615
 Local - \$245,928

Administration
 Federal - \$112,735
 Local - \$28,184

Capital
 Federal - \$5,070
 Local - \$1,268



Net Operating
 \$585,543

Legislative District: 3
Congressional District: 2
Western Arizona Council of Governments (WACOG)
Transportation Board District: 6



GENERAL DESCRIPTION

Havasu Area Transit (HAT)

Havasu Area Transit operates five routes stopping at eighty-nine (89) bus stops in Lake Havasu City, Desert Hills and the Shops at Lake Havasu. All five routes connect at thirty minutes after the hour at the downtown transfer station and will provide the rider a free transfer to another route. The scheduled route service operates Monday - Friday. Curb-to-Curb Service is available for the elderly, qualified disabled and individuals who live more than ¾ mile beyond the scheduled route area at a premium fare rate.

Primary Contact:

Gary Parsons
 Transit Manager
 900 London Bridge Road
 Lake Havasu City, AZ 86404
 Phone: 928.453.7600
 E-mail: parsonsg@lhcaz.gov
 Website: www.lhcaz.gov

Agency Type: Municipality
Type of Service: Rural

SERVICE DATA

Service days per week6
 Annual project miles413,412
 Annual service hours30,374
 Annual passenger trips 109,622
 Fares Collected\$102,380

OPERATING DATA

Cost/passenger trip\$14.32
 Cost/project mile\$3.80
 Cost/service hour\$51.70
 Passengers/project mile0.27
 Passengers/service hour3.6

FLEET DATA

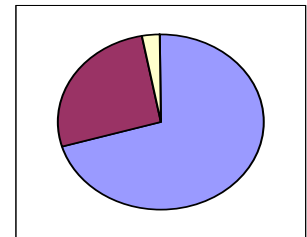
(Including Wheelchair Stations/Jump Seats)

15 Passengers or less10
 16 to 25 Passengers 8

COST DATA

Capital
 \$45,915

Administration
 \$435,468



Net Operating
 \$1,134,843

Operating:

Federal - \$658,209
 Local - \$476,634

Administration:

Federal - \$348,374
 Local - \$87,094

Capital:

Federal - \$36,732
 Local - \$9,183

Legislative District: 23
Congressional District: 1
Central Arizona Association of Governments (CAAG)
Transportation Board District: 4



GENERAL DESCRIPTION

MaricopaXPRESS

Since spring 2008, the City of Maricopa has provided fixed route commuter service providing connections to job location in downtown Phoenix and other Valley locations. Service is provided on two routes, Monday through Friday.

Primary Contact:

Kellee Kelley
 Transit Manager
 45145 W. Madison, PO Box 610
 Maricopa, AZ 85239
 Phone: 520-568-9098
 E-mail: Kellee.kelley@maricopa-az.gov
 Website: www.maricopa-az.gov

Agency Type: Municipality

Type of Service: Rural

SERVICE DATA

Service days per week 5
 Annual project miles 144,698
 Annual service hours 3,790
 Annual passenger trips 25,229
 Fares collected \$73,592

OPERATING DATA

Cost/passenger trip \$19.73
 Cost/project mile \$3.44
 Cost/service hour \$131.31
 Passengers/project mile 0.17
 Passengers/service hour 6.7

FLEET DATA

(Including Wheelchair Stations/Jump Seats)

16 to 24 passengers 3

COST DATA

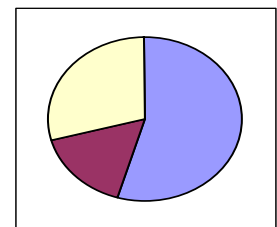
Capital
 \$207,650

Administration
 \$113,121

Operating
 Federal - \$223,032
 Local - \$161,506

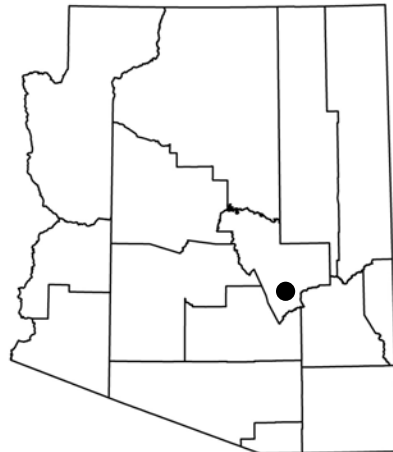
Administration
 Federal - \$90,497
 Local - \$22,624

Capital
 Federal - \$161,154
 Local - \$46,496



Net Operating
 \$384,538

Legislative District: 5
 Congressional District: 1
 Central Arizona Association of Governments (CAAG)
 Transportation Board District: 4



GENERAL DESCRIPTION

Cobre Valley Community Transit

Cobre Valley Community Transit operates a demand response/curb to curb service in the Town of Miami to the City of Globe and to a large unincorporated area in Gila County. Clientele utilizing the service includes low income, college students, and the elderly and disabled.

Primary Contact:

Sandra Eylicio
 Transit Coordinator
 Miami Town Hall
 500 Sullivan Street
 Miami, AZ 85539
 Phone: 928.473.8222
 E-mail: miamitransit@cableone.net

Agency Type: Municipality
Type of Service: Rural

SERVICE DATA

Service days per week 5
 Annual project miles 39,835
 Annual service hours 3,260
 Annual passenger trips 5,919
 Fares Collected \$10,240

OPERATING DATA

Cost/passenger trip \$21.15
 Cost/project mile \$3.14
 Cost/service hour \$38.40
 Passengers/project mile 0.15
 Passengers/service hour 1.8

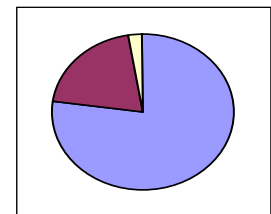
FLEET DATA

(Including Wheelchair Stations/Jump Seats)
 15 Passengers or less 3

COST DATA

Capital
 \$3,204

Administration
 \$26,560



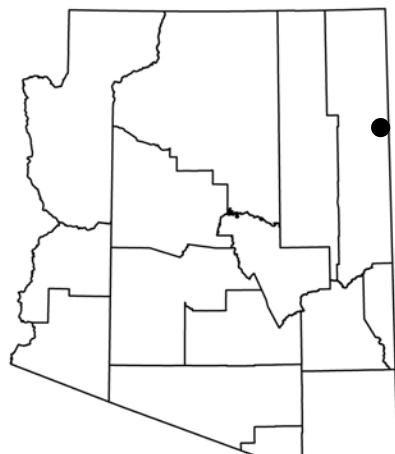
Net Operating
 \$98,619

Operating
 Federal - \$57,199
 Local - \$41,420

Administration
 Federal - \$21,248
 Local - \$5,312

Capital
 Federal - \$2,980
 Local - \$224

Northern Arizona Council of Governments (NACOG) Transportation Board District: 5



GENERAL DESCRIPTION

Navajo Transit System

The Navajo Transit System operates a fixed route service throughout the Navajo Nation in Arizona and New Mexico. Service areas include Fort Defiance, Tuba City, Kayenta, Chinle, Window Rock, Farmington, Crownpoint, Gallup, and Tseyi. Arizona and New Mexico provide Federal Section 5311 program funds to the Navajo Transit System.

Primary Contact:

Lee Bigwater
Transit Manager
PO Box 1330
Window Rock, AZ 85616
Phone: 928.729.4108
E-mail: leevbigwater@navajo.org

Agency Type: Indian Tribe
Type of Service: Rural

SERVICE DATA

Service days per week	5
Annual project miles	339,538
Annual service hours	8,492
Annual passenger trips	67,607
Fares Collected	\$48,515

OPERATING DATA

Cost/passenger trip	\$13.27
Cost/project mile	\$2.64
Cost/service hour	\$105.68
Passengers/project mile	0.20
Passengers/service hour	8.0

FLEET DATA (Estimated)

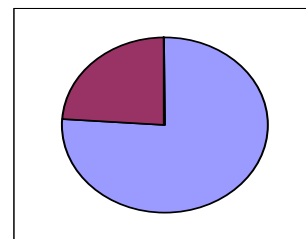
(Including Wheelchair Stations/Jump Seats)

15 passengers or less	6
16 to 24 passengers	6
25 passengers or more	14

COST DATA

Capital
\$0

Administration
\$217,304



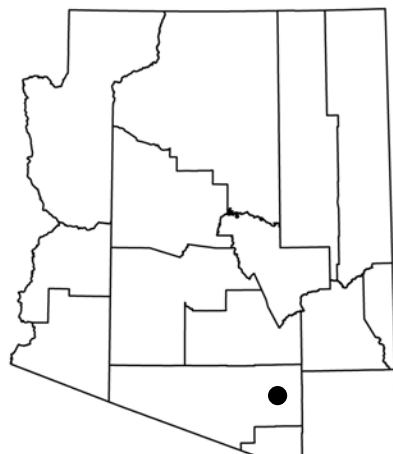
Operating
Federal - \$394,477
Local - \$285,655

Net Operating
\$680,132

Administration
Federal - \$173,843
Local - \$43,460

Capital
Federal - \$0
Local - \$0

Legislative District: 26, 27, 28, 29, and 30
Congressional District: 7 and 8
Pima Association of Governments (PAG)
Transportation Board District: 2



GENERAL DESCRIPTION

Pima County RTA—Rural Transit Services

RTA Sun Shuttle services are provided to rural neighborhoods in Marana, Oro Valley, Catalina, Sahuarita, Green Valley, San Xavier and Tucson Estates, with additional funding from the Regional Transportation Authority. As part of the regional seamless transit system, Sun Shuttle connects to Sun Tran services, giving access to the entire Tucson metropolitan area. In addition, the RTA operates three fixed routes and a dial a ride; Ajo to Tucson, Ajo to Why, and Ajo to Gila Bend that connects with services to Phoenix . Dial-a-Ride service operates within the town of Ajo.

Primary Contact:

Jeremy Papuga
 Transit Services Manager
 177 North Church, #405
 Tucson, AZ 85701
 Phone: 520.740.1093
 E-mail: jpapuga@pagnet.org
 Website: www.pagnet.org/transit

SERVICE DATA

Service days per week 6
 Annual project miles 427,617
 Annual service hours 18,019
 Annual passenger trips 112,682
 Fares Collected \$119,238

OPERATING DATA

Cost/passenger trip \$6.08
 Cost/project mile \$1.60
 Cost/service hour \$38.02
 Passengers/project mile 0.26
 Passengers/service hour 6.3

FLEET DATA

(Including Wheelchair Stations/Jump Seats)

15 passengers or less 3
 16 to 24 passengers 4
 25 passengers or more 3

COST DATA

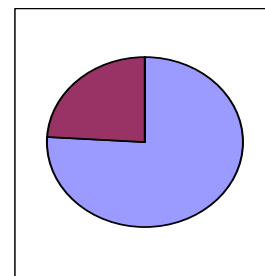
Capital
 \$0

Administration
 \$163,879

Operating
 Federal - \$302,287
 Local - \$218,897

Administration
 Federal - \$131,103
 Local - \$32,776

Capital
 Federal - \$0
 Local - \$0



Net Operating
 \$521,184

Maricopa Association of Governments (MAG) Transportation Board District: 1



GENERAL DESCRIPTION

Salt River Transit

The Salt River Transit System provides Dial-a-Ride service for tribal residents traveling to Mesa, Tempe, and Scottsdale for employment and medical services. All trips are provided on a 24 hour advance reservation. Five service areas have been established for efficiency.

Primary Contact:

Elaine Calbrera
Transit Manager
10005 East Osborn road
Scottsdale, AZ 85256
Phone: 480.850.7308
E-mail: elaine.calbrera@srpmic-nsn.gov
Website: www.saltriver.pima-maricopa.nsn.us

Agency Type: Indian Tribe

Type of Service: Rural

SERVICE DATA

Service days per week 5
Annual project miles..... 145,279
Annual service hours 9,732
Annual passenger trips..... 22,972
Fares Collected \$16,499

OPERATING DATA

Cost/passenger trip..... \$25.62
Cost/project mile..... \$4.05
Cost/service hour \$60.47
Passengers/project mile..... 0.16
Passengers/service hour..... 2.4

FLEET DATA

(Including Wheelchair Stations/Jump Seats)

15 passengers or less..... 5
16 to 24 passengers..... 4

COST DATA

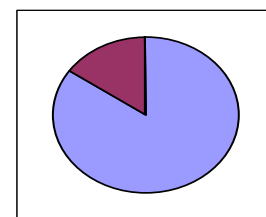
Capital
\$0

Administration
\$90,379

Operating
Federal - \$288,910
Local - \$209,210

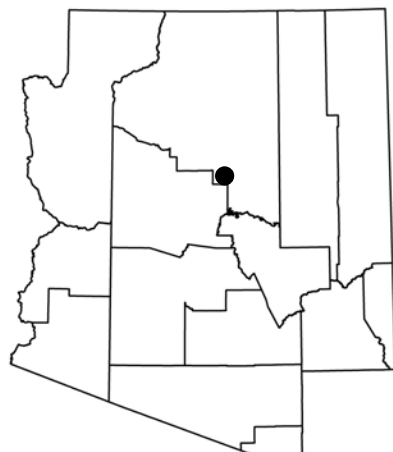
Administration
Federal - \$72,301
Local - \$18,078

Capital
Federal - \$0
Local - \$0



Net Operating
\$498,120

Legislative District: 1
 Congressional District: 1
 Northern Arizona Council of Governments (NACOG)
 Transportation Board District: 5



GENERAL DESCRIPTION

Sedona Roadrunner

The Sedona Roadrunner fixed route service operates along a 1.3 mile corridor between Uptown Main Street and the Hillside Shopping Gallery. The service also provides a morning and evening connection to and from the City of Cottonwood providing work trips to major employers in the City of Sedona. Contracted paratransit service is provided through NAIPTA.

Primary Contact:

Jim Wagner
 Senior Manager, Operations
 NAIPTA
 3773 N. Kaspar Drive
 Flagstaff, Arizona 86004
 Phone: 928.679.8710
 E-mail: jwagner@naipta.az.gov
 Website: www.naipta.az.gov

Agency Type: Municipality

Type of Service: Rural

SERVICE DATA

Service days per week 7
 Annual project miles 76,496
 Annual service hours 5,375
 Annual passenger trips 88,370
 Fares collected \$10,988

OPERATING DATA

Cost/passenger trip \$6.69
 Cost/project mile \$7.73
 Cost/service hour \$110.00
 Passengers/project mile 1.16
 Passengers/service hour 16.4

FLEET DATA

(Including Wheelchair Stations/Jump Seats)

15 passengers or less 1
 25 passengers or more 4
 Service vehicle 1

COST DATA

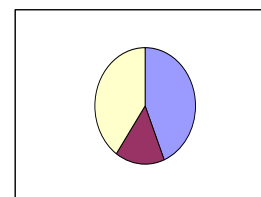
Capital
 \$400,000

Administration
 \$156,628

Operating
 Federal - \$255,089
 Local - \$182,548

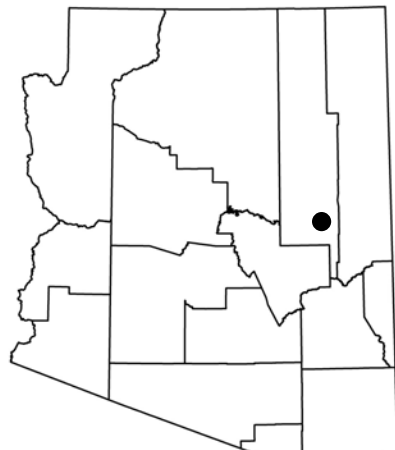
Administration
 Federal - \$125,303
 Local - \$31,325

Capital
 Federal - \$320,000
 Local - \$80,000



Net Operating
 \$434,637

Legislative District: 5
 Congressional District: 1
 Northern Arizona Council of Governments (NACOG)
 Transportation Board District: 5



GENERAL DESCRIPTION

The Four Seasons Connection

The Four Seasons Connection operates a deviated fixed route service in the City of Show Low, Town of Pinetop-Lakeside and unincorporated Navajo County between the communities and to the Hon-Dah Resort and Conference Center. Service is provided on two routes with 61 stops linking commercial, medical, municipal, and recreation centers throughout the service area.

Since April 2009, the White Mountain Connection has been providing service three times each weekday between Pinetop-Lakeside and Holbrook.

Primary Contact:

Harvey (Holiday) Van Sciver
 550 North 9th Place
 Show Low, AZ 85901
 Phone: 928.532.4097
 E-mail: holiday@showlowaz.gov
 Website: www.ci.show-low.az.us

Four Seasons Connection Contractor:
 MV Transportation
 Thomas Hakenewerth
 Phone: 928.537.0627
 E-mail: thakenewerth@mvtransit.com

Agency Type: Municipality

Type of Service: Rural

SERVICE DATA

Service days per week 6
 Annual project miles 220,467
 Annual service hours 8,976
 Annual passenger trips 126,052
 Fares collected \$48,781

OPERATING DATA

Cost/passenger trip \$3.45
 Cost/project mile \$1.97
 Cost/service hour \$48.45
 Passengers/project mile 0.57
 Passengers/service hour 14.0

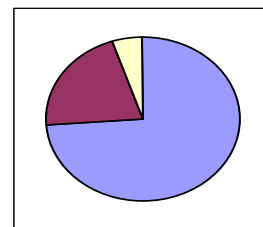
FLEET DATA

(Including Wheelchair Stations/Jump Seats)
 16 to 24 passengers 6

COST DATA

Capital
 \$22,945

Administration
 \$97,988



Operating
 Federal - \$195,426
 Local - \$141,516

Administration
 Federal - \$78,390
 Local - \$19,598

Capital Budget
 Federal - \$18,336
 Local - \$4,589

Net Operating
 \$336,942

Legislative District: 25 & 30
 Congressional District: 8
 SouthEastern Arizona Governments Association (SEAGO)
 Transportation Board District: 3



GENERAL DESCRIPTION

VISTA TRANSIT

Vista Transit provides fixed route system with five routes. The routes are designed as neighborhood circulators that meet every one-half hour at the transit transfer center and serve major employers, low-income housing, shopping centers, senior activity centers, medical facilities, and all City, State, and County offices. Curb-to-curb paratransit service is also available for eligible riders with mobility limitations with a 24-hour advance reservation.

Primary Contact:

Steve Tyminski
 Transit Manager
 401 Giulio Cesare Avenue
 Sierra Vista, AZ 85635
 Phone: 520.458.5775
 E-mail: steve.tyminski@sierravistaaz.gov
 Website: www.sierravistaaz.gov

Agency Type: Municipality

Type of Service: Rural

SERVICE DATA

Service days per week 7
 Annual project miles 247,032
 Annual service hours 15,153
 Annual passenger trips 171,018
 Fares collected \$114,079

OPERATING DATA

Cost/passenger trip \$5.10
 Cost/project mile \$3.51
 Cost/service hour \$57.55
 Passengers/project mile 0.69
 Passengers/service hour 11.3

FLEET DATA

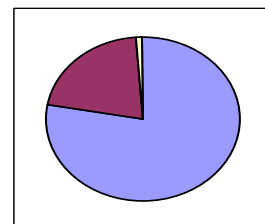
(Including Wheelchair Stations/Jump Seats)

16 to 24 passengers 10
 25 passengers and over 2
 Service vehicles 1

COST DATA

Capital
 \$9,091

Administration
 \$183,747



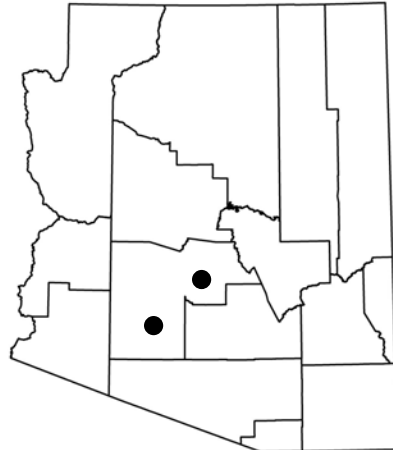
Operating
 Federal - \$399,213
 Local - \$289,086

Administration
 Federal - \$146,998
 Local - \$36,749

Capital
 Federal - \$7,273
 Local - \$1,818

Net Operating
 \$688,299

Maricopa Association of Governments (MAG) Transportation Board District: 1



GENERAL DESCRIPTION

Route 660 - Wickenburg to Glendale
Route 685 - Gila Bend to Phoenix

Valley Metro/RPTA utilizes Section 5311 funding to operate two routes. Route 660, provides three weekday roundtrips from Wickenburg to Glendale with a stop in Surprise. Route 685, provides service from Gila Bend into Phoenix. Service is provided along MC85 with stops in Buckeye, Avondale, Goodyear, Tolleson, and the Desert Sky Mall in Phoenix. This service also connects with Pima Regional Transportation Authority service provided from Ajo to Gila Bend.

Primary Contact:

Anne MacCracken
Transportation Planner
301 N 1st Ave, Suite 700
Phoenix, AZ 85003
Phone: 602.262.7433
E-mail: amaccracken@valleymetro.org
Website: valleymetro.org

Agency Type: Transportation Authority
Type of Service: Rural

SERVICE DATA

Service days per week 6
Annual project miles 294,700
Annual service hours 10,361
Annual passenger trips 17,442
Fares collected \$50,919

OPERATING DATA

Cost/passenger trip \$48.78
Cost/project mile \$2.89
Cost/service hour \$82.12
Passengers/project mile 0.06
Passengers/service hour 1.7

FLEET DATA

(Including Wheelchair Stations/Jump Seats)
16 to 24 passengers 6
25 passengers and over 1

COST DATA

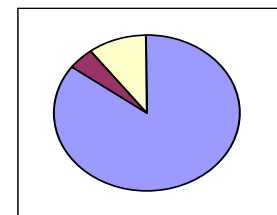
Capital
\$98,352

Administration
\$46,706

Operating
Federal - \$466,401
Local - \$377,740

Administration
Federal - \$36,765
Local - \$9,941

Capital
Federal - \$78,682
Local - \$19,670



Operating
\$804,141

FY 2009 Program Summary

[illegible]



Sam Chavez
Section 5311 Program Manager

206 S. 17th Ave, 310B
Phoenix, AZ 85007

schavez@azdot.gov
602.712.7465 (phone)
602.712.3046 (fax)