

DATA TABLE

1	N34°58'15"E	207.28'
2	S67°55'32"E	49.06'
3	S69°12'20"E	154.47'
4	S69°21'50"E	228.91'
5	N60°30'44"E	59.03'
6	S69°52'10"E	186.28'
7	S67°55'35"E	51.05'
8	S69°18'43"E	181.09'
9	R=1092.93'	L=130.09'
10	N60°30'44"E	129.24'
11	R=1193.29'	L=45.56'

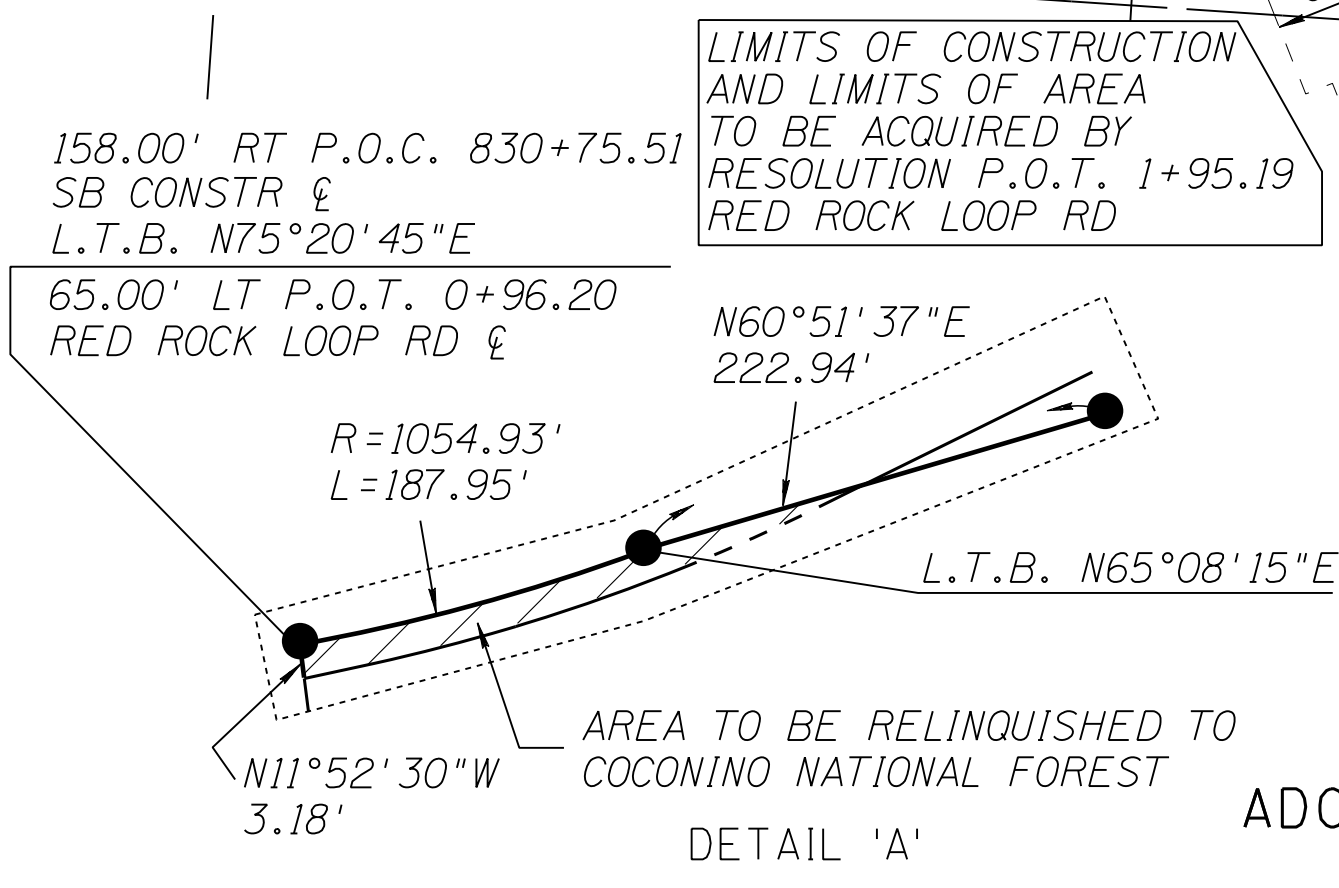


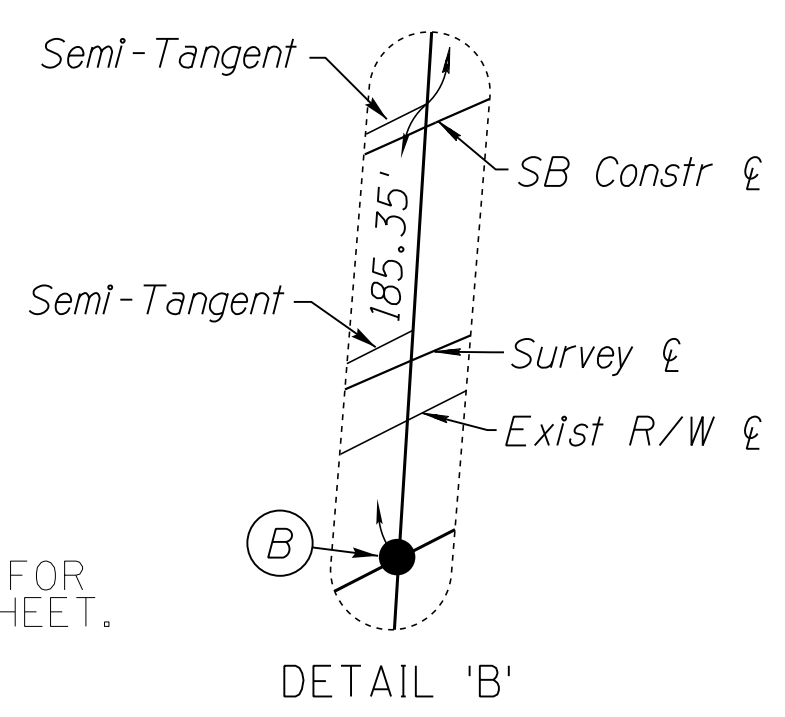
EXHIBIT-E4
(RURAL)

ADOT CADD STANDARDS 2016

CHANGE ORDER REVISIONS

C.O. NO.	DATE	BY	DESCRIPTION OF REVISIONS
9405	8-14-02	JC	Added Unpatented Mining Claim
9406	8-15-02	JC	Revised New R/W line from Sta 830+75.51 to Sta 834+40.32 right side

DRAWING NO.	D-13-T-446	ARIZONA DEPARTMENT OF TRANSPORTATION INFRASTRUCTURE DELIVERY AND OPERATIONS RIGHT OF WAY PLANS SECTION	PRELIMINARY NOT FOR CONSTRUCTION OR RECORDING --Created-- 12/13/16 11:36:05 AM
SURVEY	See Attached Survey		
DRAWN/DATE	J. Crume/Sep 01	HIGHWAY NAME:	PRESCOTT - FLAGSTAFF
ADOT REVIEW	B. Gurney	FEDERAL AID NO.:	S 366-814
HUBBARD ENGINEERING 480-892-3313 Gilbert, AZ jcrume@heez.us Job # 20047		PROJECT NO.:	089A YV 366 H2741 02R
ROUTE NO.:	S.R. 89A	LOCATION:	Dry Creek - Sedona
			SHEET P-5



SB CONSTR & CURVE DATA

PI 844+19.95
TOTAL CURVE
Δ=53°29'01" RT
T=593.77'
L=1113.53'
MAIN CURVE
SPIRAL Δ=41°24'56" D=5°53'13" a=2.87
Δ=6°02'02" L=703.53' R=973.29'
L=205.00'

Point <th>Station <th>Bearing <th>Distance </th></th></th>	Station <th>Bearing <th>Distance </th></th>	Bearing <th>Distance </th>	Distance
A	S.C. 840+31.18	158.00' RT	
B	L.T.B. N64°37'26"E		
C	P.O.S. 838+87.84	159.68' RT	
D	T.S. 849+39.71	158.00' RT	
E	T.S. 849+88.77	158.00' RT	
F	S.C. 851+58.77	158.00' RT	
G	L.T.B. S71°57'44"E		
H	L.T.B. S71°57'44"E		
I	S.C. 851+58.77	220.00' LT	
J	L.T.B. S71°57'44"E		
K	L.T.B. S71°57'44"E		
L	P.O.C. 840+68.34	220.00' LT	
M	L.T.B. N66°48'41"E		

