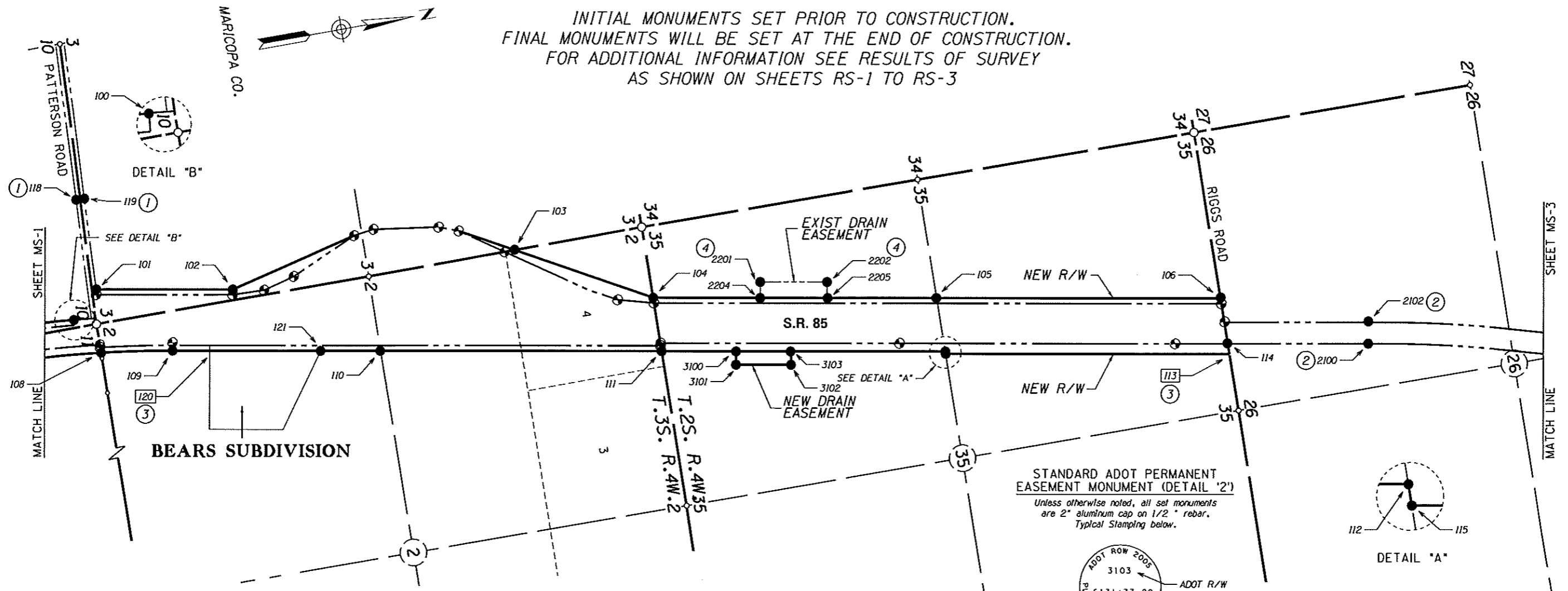


RIGHT OF WAY STAKING PLAN

INITIAL MONUMENTS SET PRIOR TO CONSTRUCTION.
FINAL MONUMENTS WILL BE SET AT THE END OF CONSTRUCTION.
FOR ADDITIONAL INFORMATION SEE RESULTS OF SURVEY
AS SHOWN ON SHEETS RS-1 TO RS-3



MONUMENTATION LIST					
PT.	NORTHING	EASTING	DESCRIPTION	STATION	OFFSET
100	796856.32200	475554.09654		6063+90.73	125.00' LT
101	797114.23000	475308.61544		6066+01.76	396.11' LT
102	798385.71000	475534.34434		6078+93.12	373.97' LT
103	801070.78293	475635.51586		6105+50.93	746.90' LT
104	802287.59511	476302.03716		6118+69.13	300.00' LT
105	804924.92796	476770.24564		6145+40.19	300.00' LT
106	807562.79268	477238.54853		6172+26.81	300.00' LT
108	797059.24941	475902.34344		6066+51.47	200.00' RT
109	797726.85426	475999.98851		6073+25.81	200.00' RT
110	799669.26718	476344.85666		6092+95.42	200.00' RT
111	802282.45311	476808.81801		6119+53.48	200.00' RT
112	804919.25945	477276.97313		6146+30.70	200.00' RT
113	807556.97404	477767.89332	See Note 3	6173+13.61	222.00' RT
114	807557.95200	477669.34300		6172+91.46	125.00' RT
115	804919.00711	477299.53217		6146+34.39	222.00' RT
118	797069.44939	474449.84145	See Note 1	6064+07.54	1244.94' LT
119	797149.38194	474453.12589	See Note 1	6064+86.82	1250.17' LT
120	798076.65570	476062.09445	See Note 3	6076+81.08	200.00' RT
121	799107.83824	476245.17705		6087+28.24	200.00' RT
2100	808860.14548	477900.70526	See Note 2	6186+19.96	125.00' RT
2102	808895.13200	477703.79000	See Note 2	6186+19.96	75.00' LT
2201	803306.58081	476330.66303	See Note 4	6128+78.00	450.00' LT
2202	803917.03702	476439.02946	See Note 4	6134+98.00	450.00' LT
2204	803280.36325	476478.35415		6128+78.00	300.00' LT
2205	803890.81937	476586.72042		6134+98.00	300.00' LT
3100	802971.67783	476931.16718		6126+53.00	200.00' RT
3101	802936.72091	477128.08847		6126+53.00	400.00' RT
3102	803448.71648	477218.97635		6131+73.00	400.00' RT
3103	803483.67332	477022.05503		6131+73.00	200.00' RT

NOTES

1/2" rebars with plastic cap PLS #19817 set as temporary monuments for each of the points shown unless otherwise noted.

The contractor is responsible for maintaining and replacing any temporary monuments that are destroyed during construction.

① 1/2" Rebar w/ plastic cap PLS #19817 set for final R/W Monument. Standard ADOT R/W monument NOT to be set at this location.

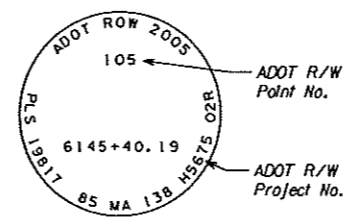
② Set standard ADOT R/W monument for final R/W monument - Detail '1'

③ Unable to set temporary monument.

④ Set standard ADOT permanent easement monument - Detail '2'

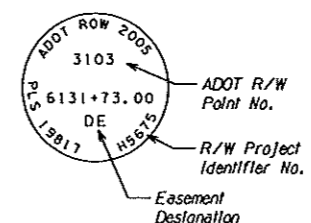
STANDARD ADOT R/W MONUMENT (DETAIL '1')

Unless otherwise noted, all set monuments are 3" aluminum cap on 3/4" rebar. Typical stamping below.



STANDARD ADOT PERMANENT EASEMENT MONUMENT (DETAIL '2')

Unless otherwise noted, all set monuments are 2" aluminum cap on 1/2" rebar. Typical stamping below.



LEGEND

- 302 Set Monument
- 300 Found Monument
- Initial R/W monument to be set unless otherwise noted
- 301 Calculated position
- Existing ADOT R/W monument

Scale: 0 250 500

EXHIBIT-F10
ADOT CADD STANDARDS 2016

CHANGE ORDER REVISIONS				DRAWING NO.	D-7-T-940	ARIZONA DEPARTMENT OF TRANSPORTATION INFRASTRUCTURE DELIVERY AND OPERATIONS RIGHT OF WAY PLANS SECTION	
C.O. NO.	DATE	BY	DESCRIPTION OF REVISIONS	SURVEY	October 2005	HIGHWAY NAME:	GILA BEND - BUCKEYE
				DRAWN/DATE	J. Crume/Oct 05	FEDERAL AID NO.:	S 085-B-701
				ADOT REVIEW	B. Gurney	PROJECT NO.:	085 MA 138 H5675 02R
				HUBBARD ENGINEERING 480-892-3313 Gilbert, AZ jcrume@haz.us Job # 20047		PRELIMINARY NOT FOR CONSTRUCTION OR RECORDING --Created-- 12/08/16 1:24:23 PM	
				ROUTE NO.:	S.R. 85	LOCATION:	Lewis Prison - Gila River

REFER TO THE RESULTS OF SURVEY AND R/W PLANS FOR THE BASIS OF STATIONING.