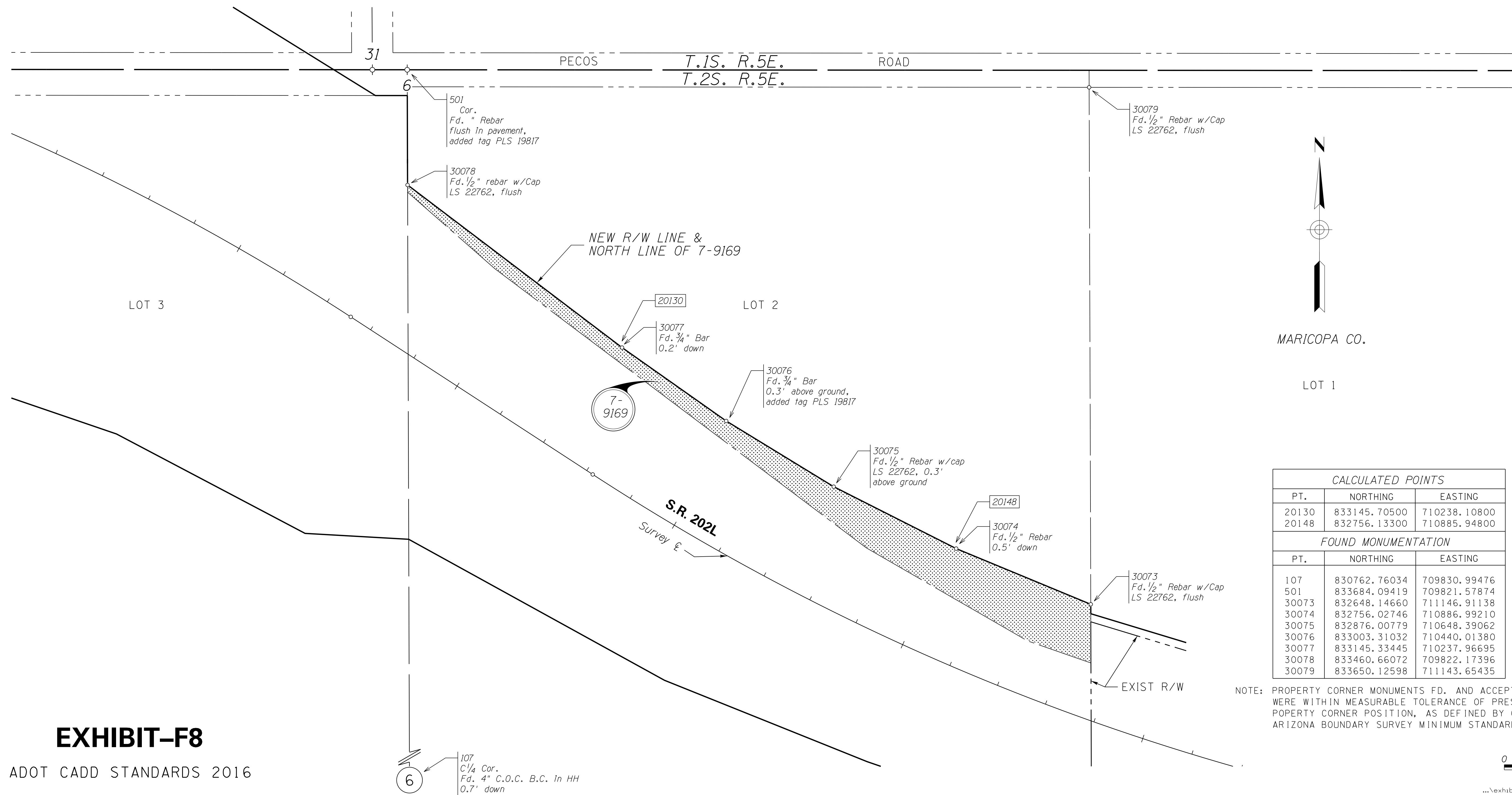


# SUPPLEMENTAL RESULTS OF SURVEY

THIS SURVEY SUPPLEMENTS THE RESULTS OF SURVEY  
SHOWN ON SHEETS RS-1 TO RS-9

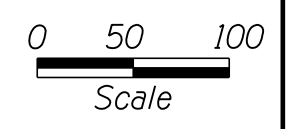


CALCULATED POINTS		
PT.	NORTHING	EASTING
20130	833145.70500	710238.10800
20148	832756.13300	710885.94800

FOUND MONUMENTATION		
PT.	NORTHING	EASTING
107	830762.76034	709830.99476
501	833684.09419	709821.57874
30073	832648.14660	711146.91138
30074	832756.02746	710886.99210
30075	832876.00779	710648.39062
30076	833003.31032	710440.01380
30077	833145.33445	710237.96695
30078	833460.66072	709822.17396
30079	833650.12598	711143.65435

NOTE: PROPERTY CORNER MONUMENTS FD. AND ACCEPTED WERE WITHIN MEASURABLE TOLERANCE OF PRESUMED PROPERTY CORNER POSITION, AS DEFINED BY CURRENT ARIZONA BOUNDARY SURVEY MINIMUM STANDARDS.



...\\exhibitF8\_rs01.dgn

## EXHIBIT-F8

ADOT CADD STANDARDS 2016

THIS SURVEY WAS PERFORMED TO ESTABLISH THE NORTH LINE OF PARCEL 7-9169 AND TO ADJUST THE NEW R/W LINE SO THAT IT IS COINCIDENT TO SAID NORTH LINE.

### LEGEND

- 301 Set Monument
- 300 Found Monument
- C.O.C. City of Chandler
- 301 Calculated position
- Parcel Limits

CHANGE ORDER REVISIONS			
C.O. NO.	DATE	BY	DESCRIPTION OF REVISIONS

DRAWING NO.	D-7-T-909	ARIZONA DEPARTMENT OF TRANSPORTATION INFRASTRUCTURE DELIVERY AND OPERATIONS RIGHT OF WAY PLANS SECTION	PRELIMINARY NOT FOR CONSTRUCTION OR RECORDING --Created-- 12/13/16 12:45:41 PM
SURVEY	AUG. 2001		
DRAWN/DATE	J. Crume/Sep 01	HIGHWAY NAME:	SANTAN FREEWAY
ADOT REVIEW	B. Gurney	FEDERAL AID NO.:	RAM 600-7-802
HUBBARD ENGINEERING 480-892-3313 Gilbert, AZ jcrume@heez.us Job # 20047		PROJECT NO.:	202L MA 003 H5380 01R
ROUTE NO.:	SR 202L	LOCATION:	Price Road - Arizona Avenue
SHEET			SS-1