



Prescott District Update

January 17, 2014

Alvin Stump

Prescott District Engineer



CYMPO AREA UPDATE

Under Construction

- White Spar Enhancement - \$3.4 Million
- Del Rio and Big Chino Wash - \$4.1 Million
- CYMPO Sign Project - \$1.06 Million
- Dewey-Humboldt Sign Project – \$43,866
- SR 69 Signal Phasing - \$168,608

SR 89 Center Street – Outerloop Rd Sidewalk and Landscaping Project



Deep Well Ranch Rd – South Chino Limits (North end)



Future Projects

- Prescott Valley Multi-Use Path – FY'14
- Rd 4 North Roundabout – FY'14
- Perkinsville Rd Roundabout – FY'15
- Verde Ranch Rd Right Turn Lane – FY'16
- SR 69 and Main Street Signal – FY'16?
- SR 69 Mendicino - SR 169 Pavement Preservation – TBD
- Deep Well Ranch Rd – SR 89A TI – TBD
- SR 69 Prescott Canyon - Prescott Lakes - TBD

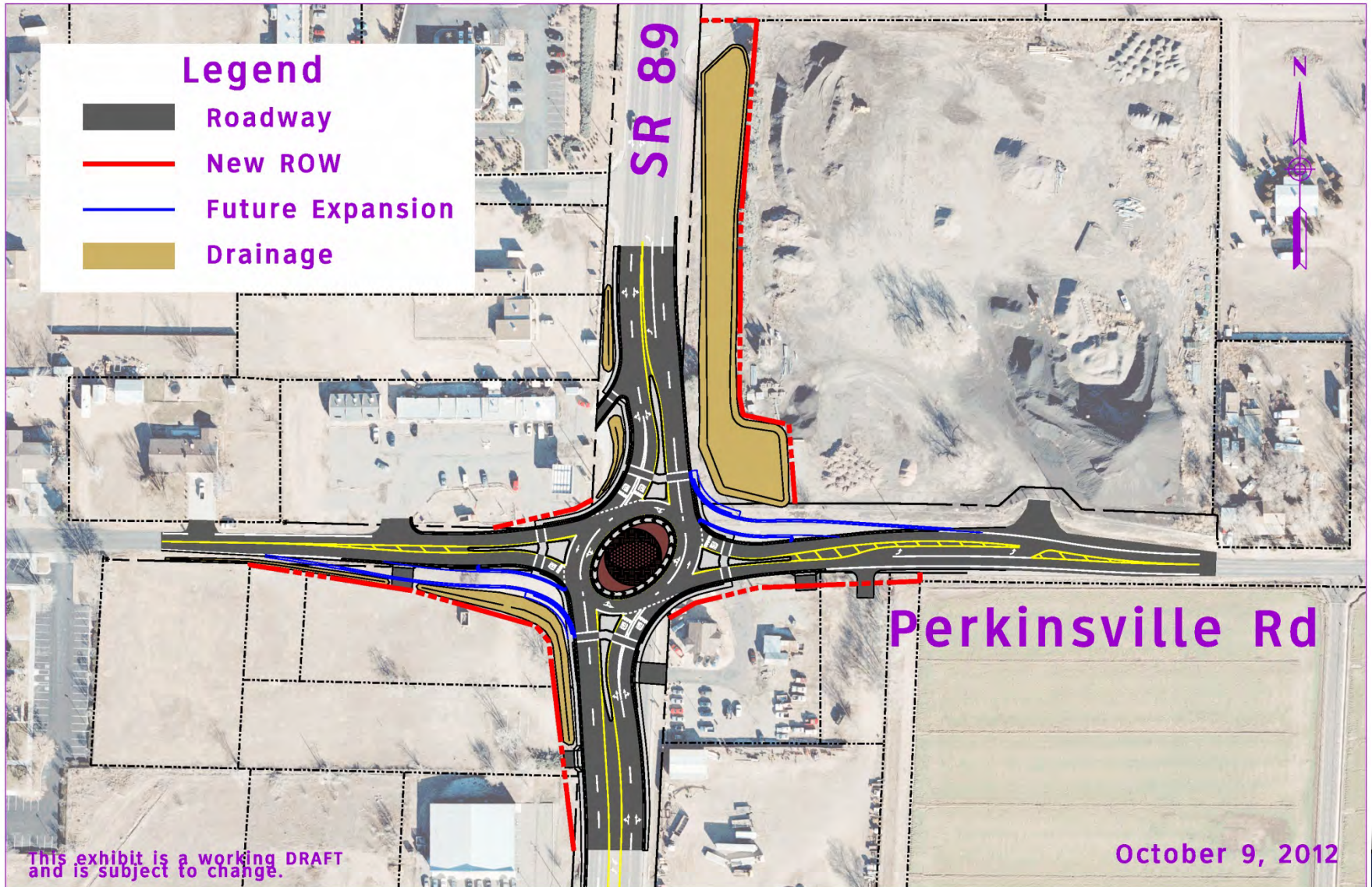
Off System Projects

Town of Prescott Valley Multi-Use Path

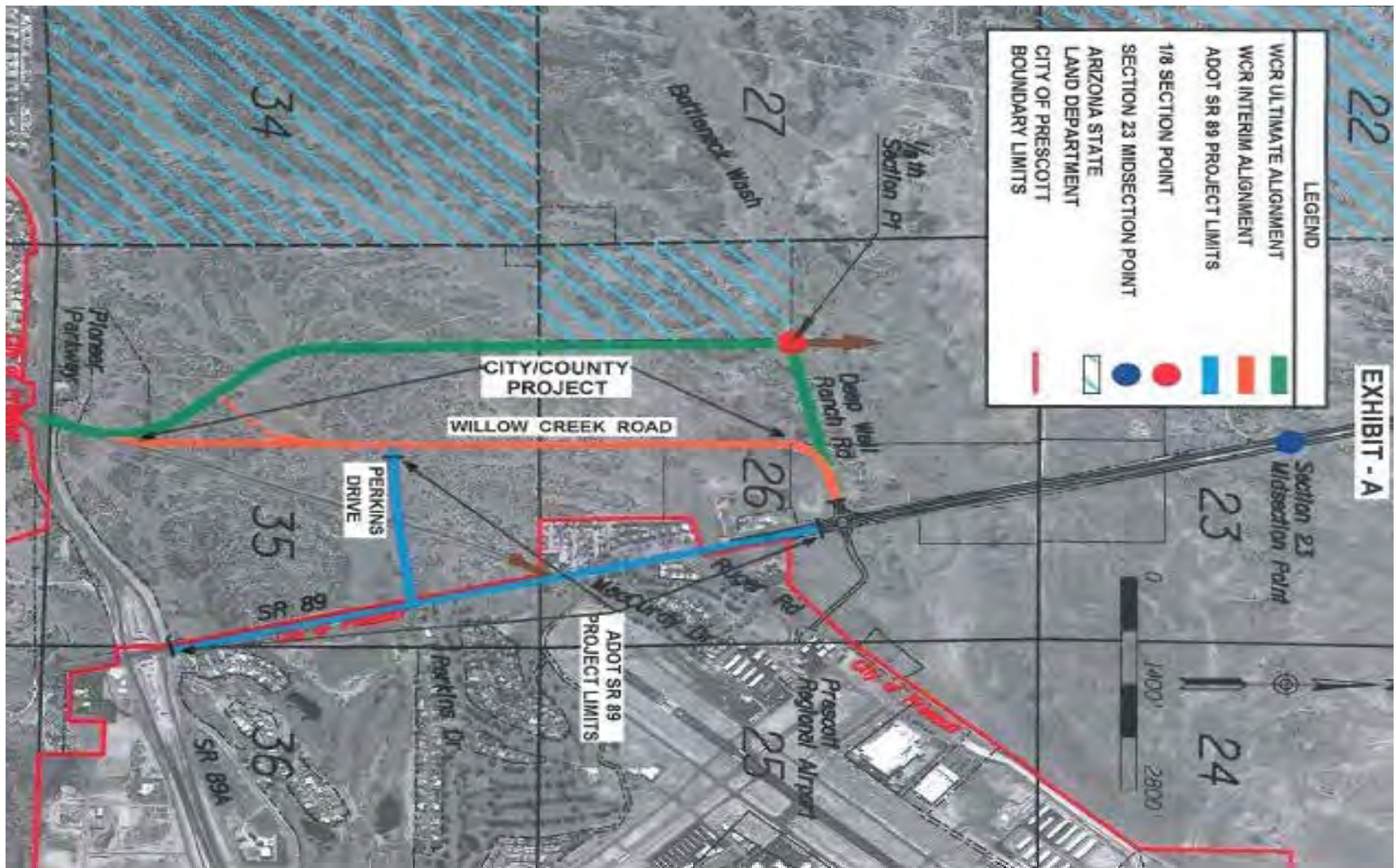


SR 89 / Perkinsville Road

Proposed Intersection Improvements



SR 89A – Deep Well Ranch Rd






SR 69 Prescott Canyon – Prescott Lakes Parkway



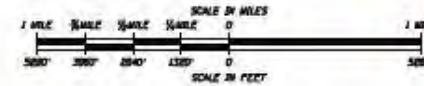
SR 260 Access management IGA:

- SR 260 will have a rural divided highway cross section from Thousand Trails Road to Horseshoe Bend Road.
- A fringe urban cross section will be added from Horseshoe Bend Road to Wilshire Drive.
- One westbound and one eastbound left-in only access point will be permitted between Horseshoe Bend Road and Wilshire Drive.
- Right-in/Right-out access will be limited to ¼ mile minimum spacing.
- Seven (7) full access intersections will be constructed.
- SR 260 intersections will be designed to maintain a level of service B on main line (SR 260) for a minimum of 20 years. Large developments may be required to do minor intersection improvements.

LEGEND

-  Proposed Roundabout intersection
-  Proposed Limited Access Point
-  Potential New Multi-Modal Path

SR 260 Access Management Plan



- DRAFT -
11-12-2013

Preliminary Planning Document
Not For Public Distribution
Concepts are preliminary and
subject to change/modification.

Prepared by: **JACOBS**

Prepared for: **ADOT**

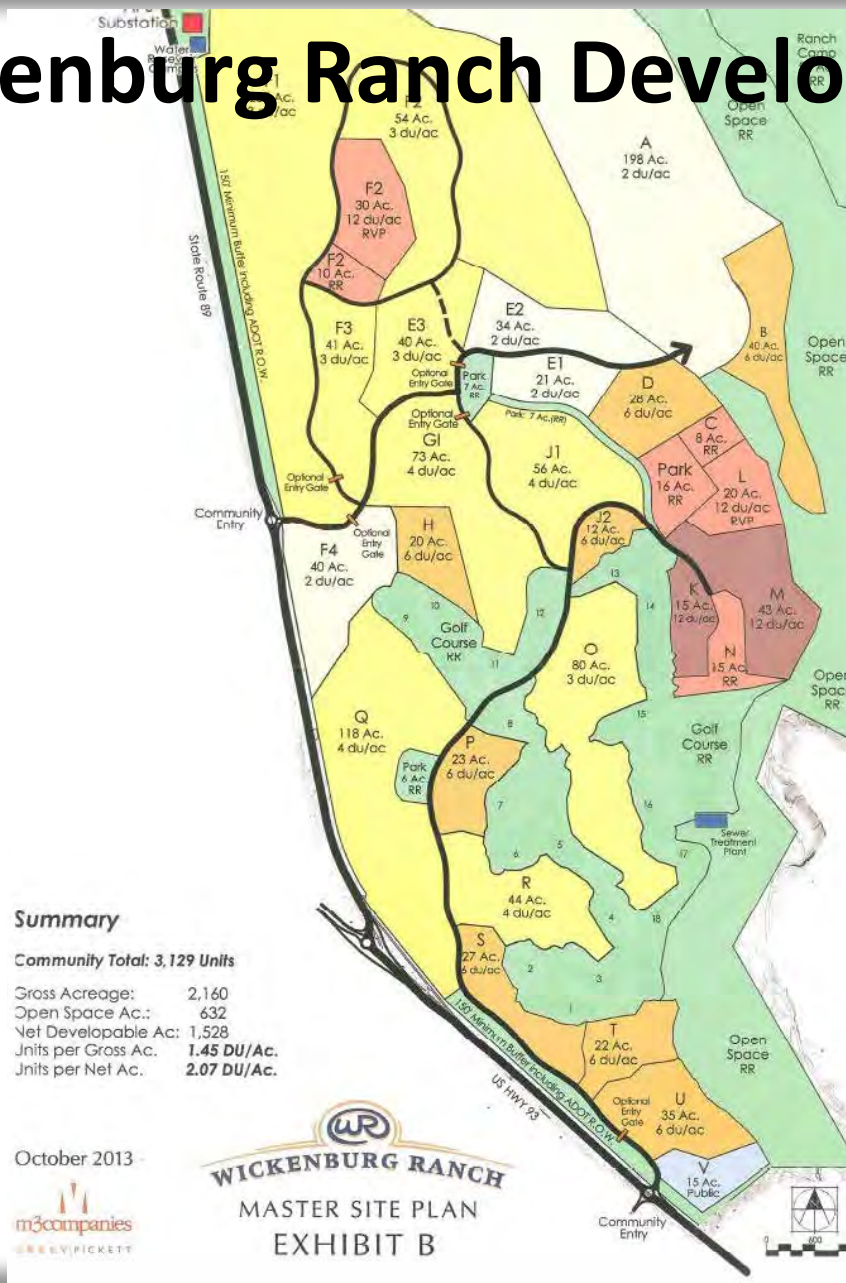
260

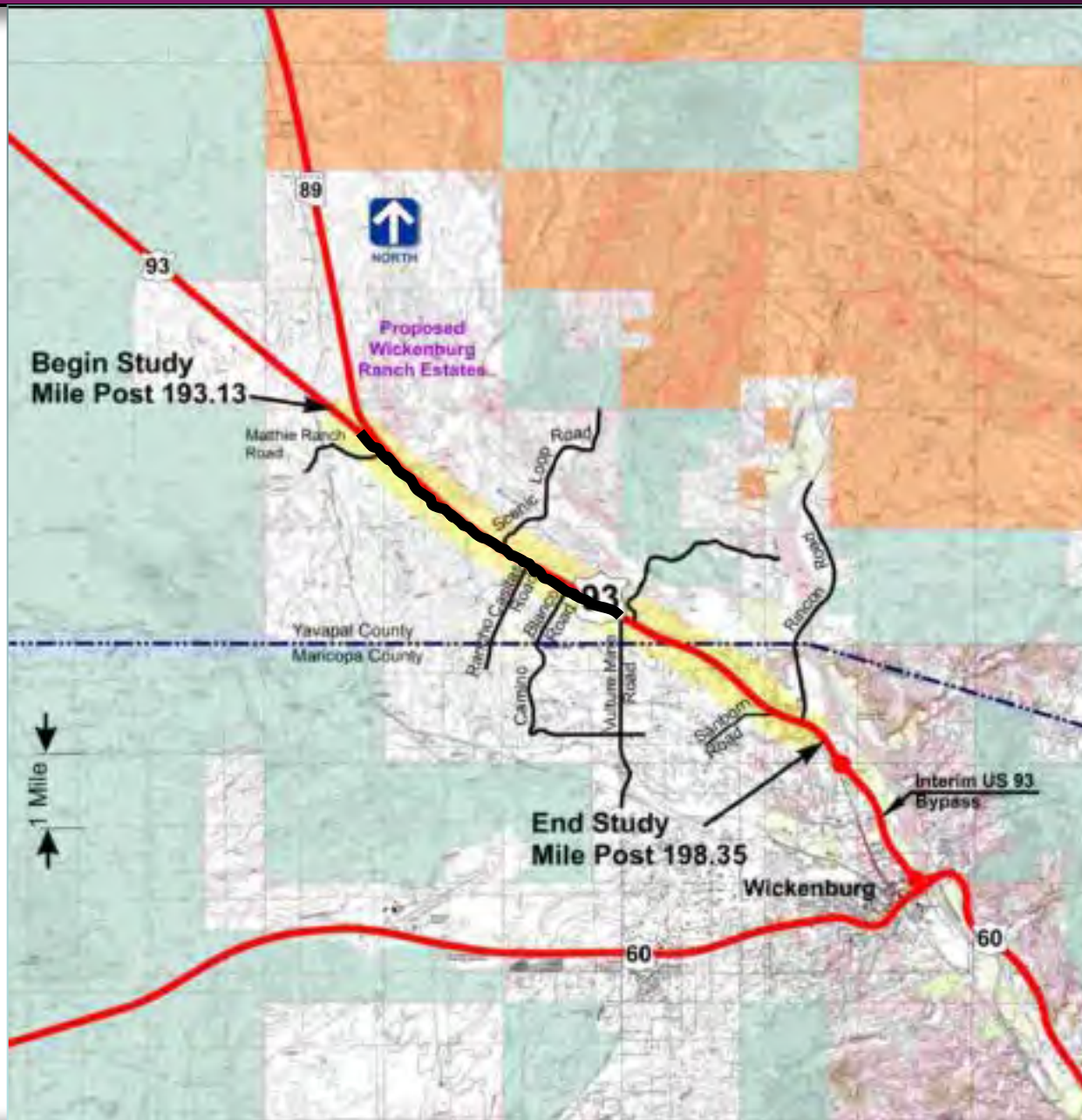
SR 260: COTTONWOOD TO CAMP VERDE CORRIDOR UPDATE

17

1 of 8

Wickenburg Ranch Development





Questions?