



Prescott District Update

July 11, 2014

Alvin Stump

Prescott District Engineer



Verde Valley Area Update

Under Construction

- Copper Canyon Climbing Lane (\$12.5 Million)
- I-17 Dugas – SR 169 Preservation (\$6.7 Million)

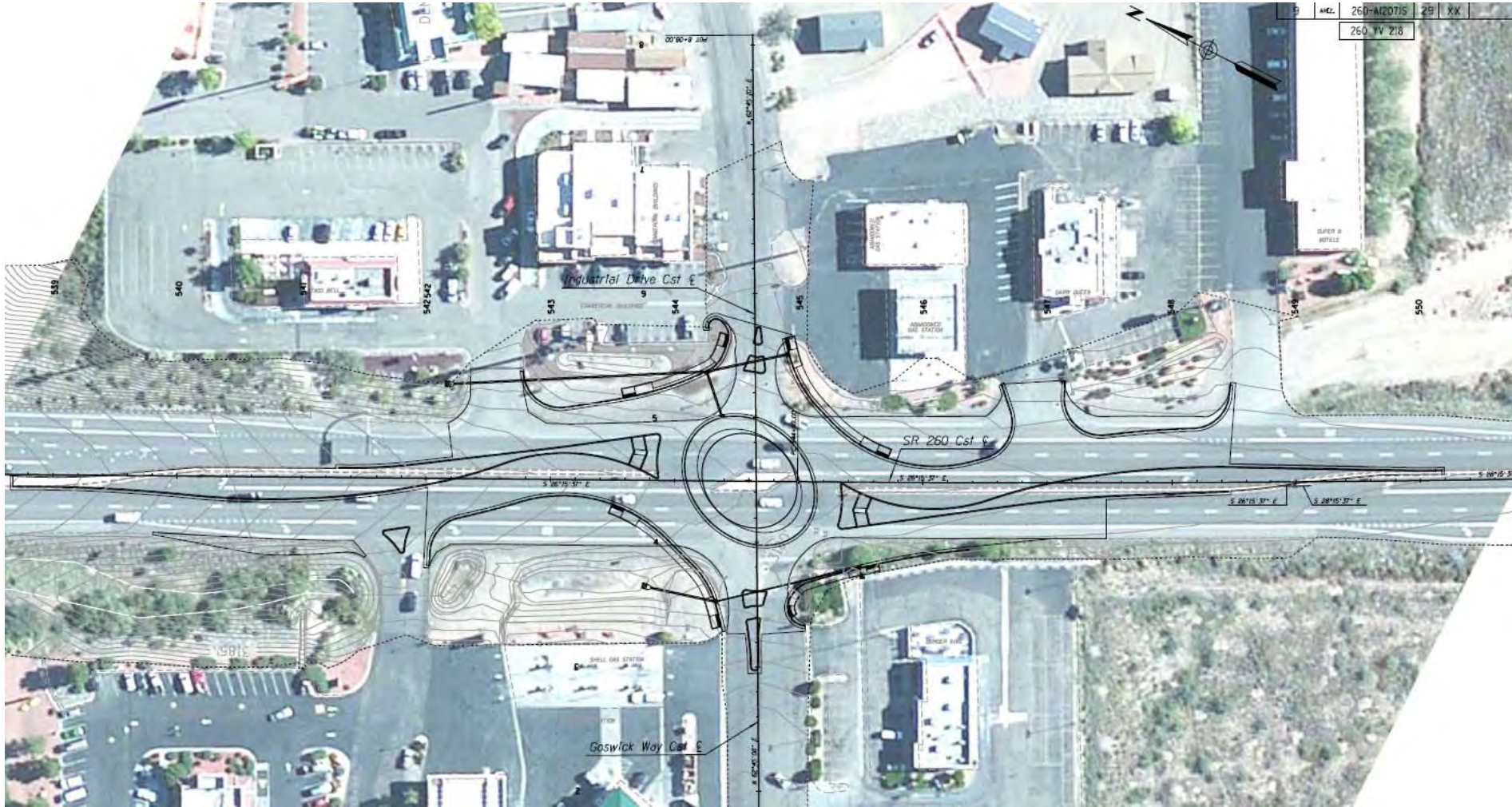
In Development

- SR 260 Industrial Dr. Roundabout (\$1.5 Million) FY '15
- I-17 SR 169 – Middle Verde Preservation (\$2.8 Million) FY'15
- Sidewalk Enhancement Projects (\$282K and \$920K) FY'15
- SR 260 Thousand Trails - I-17 (\$62 Million) FY'16

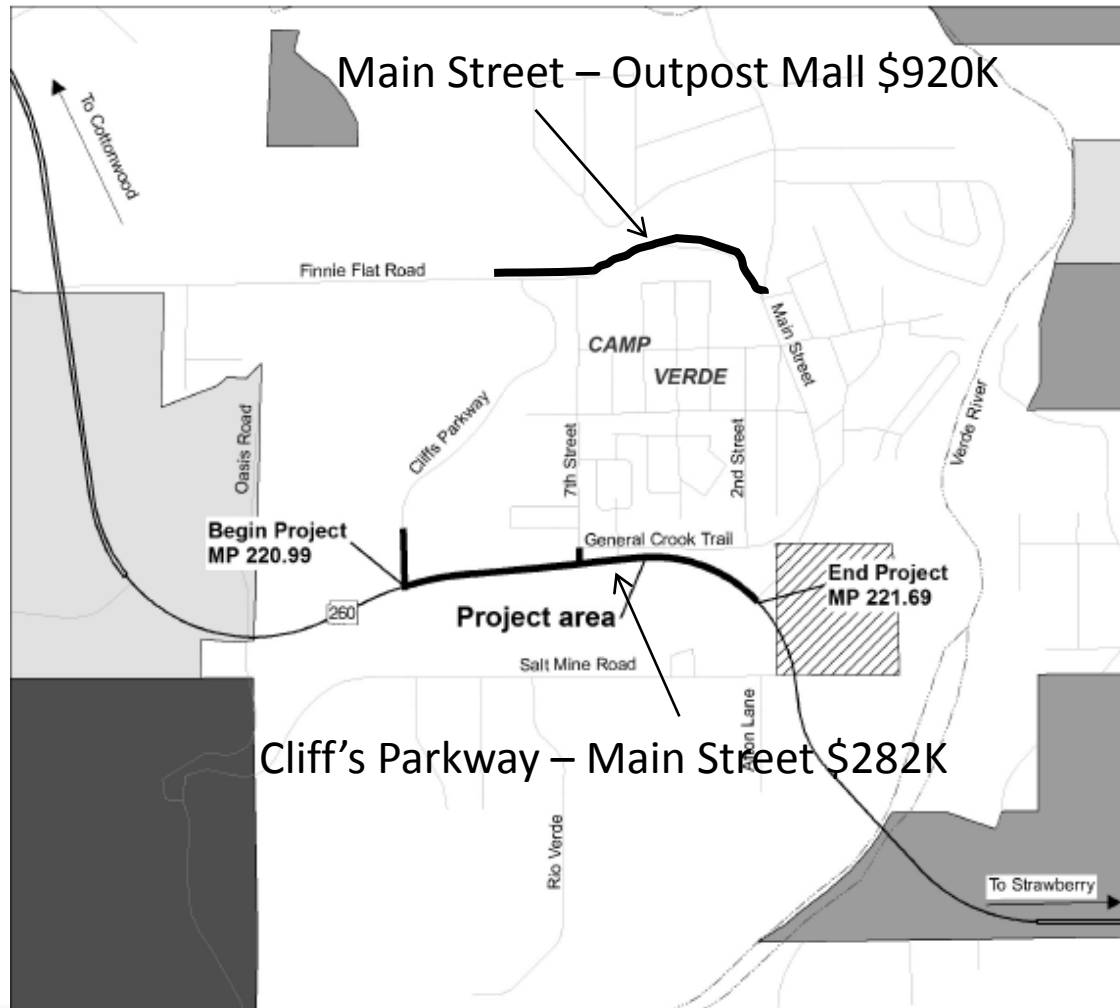
Copper Canyon Phase 1 Climbing Lane



SR 260 Industrial Dr. Roundabout Joint Project with Town of Camp Verde Construction - 2015






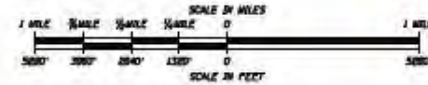
Cliff's Parkway- Main Street and Main Street – Outpost Mall Sidewalk Projects (Construction 2015)



SR 260 Thousand Trails – I-17

LEGEND

-  Proposed Roundabout Intersection
-  Proposed Limited Access Point
-  Potential New Multi-Modal Path



- DRAFT -

11-12-2013

Preliminary Planning Document
Not For Public Distribution
Concepts are preliminary and
subject to change/modification.

SR 260 Update

- ▶ 30% Design

- ▶ Currently advertised for final design

- ▶ Schedule

 - Advertise for consultant for final design – June 2014

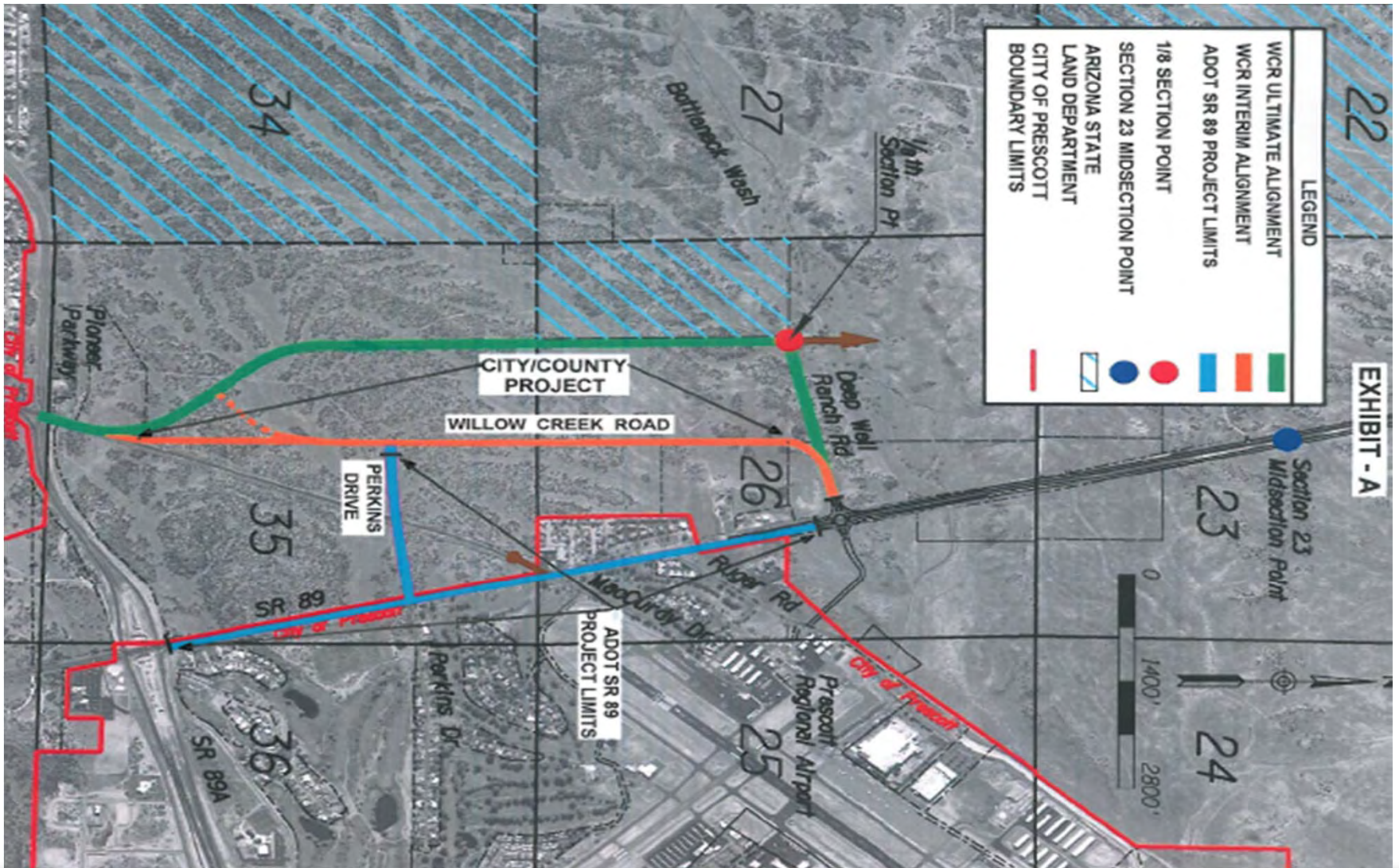
 - Advertise for CMAR – August 2014

 - Consultant under contract for final design – October 2014

 - CMAR under contract – December – 2014

 - Start construction (January – March 2016)

SR 89 Deep Well Ranch Rd – SR 89A Update



US 93 Update

- ▶ South of SR 71 – North of SR 89 (MP 185 – 190.51)
\$25 Million
- ▶ Wickenburg Ranch Roundabout (MP194.3)
\$3 Million (Developer Funded)



Questions?