

## Appendix A

---

*Public Information & Meeting Email Notifications  
Ahwatukee Foothills News Advertisement*



[REDACTED]

---

**From:** Miller, Marsha  
**Sent:** Tuesday, June 12, 2018 12:59 PM  
**To:** Estelle, Haley  
**Subject:** FW: 32nd Street Traffic Interchange Questionnaire and Open House

**Importance:** High

Emails to Council persons Nowakowski, Gallego and DiCiccio on 5/2/18.

**Marsha Miller**

*Public Involvement Project Manager*



**HDR**

3200 East Camelback Road, Suite 350  
Phoenix, AZ 85018-2311

[REDACTED]

[hdrinc.com/follow-us](http://hdrinc.com/follow-us)

---

**From:** Thomas Remes [REDACTED]  
**Sent:** Tuesday, June 12, 2018 10:55 AM  
**To:** Miller, Marsha [REDACTED]  
**Subject:** FW: 32nd Street Traffic Interchange Questionnaire and Open House  
**Importance:** High

Tom Remes  
Freeway Coordination Manager  
City Manager's Office  
City of Phoenix  
[REDACTED]

---

**From:** Thomas Remes  
**Sent:** Wednesday, May 2, 2018 10:06 AM  
**To:** Sam G Stone [REDACTED]; Jaimie L Kleshock [REDACTED]; Lily Floyd [REDACTED]  
**Subject:** 32nd Street Traffic Interchange Questionnaire and Open House  
**Importance:** High

FYI – ADOT will be holding an Open House to discuss a potential new traffic interchange for the South Mountain Freeway at 32<sup>nd</sup> St. ADOT has drafted language (see below) that elected officials can send to constituents (if desired). ADOT will

use various social media forums to push out this information. This language has been shared with the City, County and State. Please let me know if you have any questions. Thanks.

Tom Remes  
Freeway Coordination Manager  
City Manager's Office  
City of Phoenix  
[REDACTED]

---

**From:** Miller, Marsha [REDACTED]  
**Sent:** Tuesday, May 1, 2018 3:43 PM  
**Subject:** 32nd Street Traffic Interchange Questionnaire and Open House

**Subject: Proposed 32nd Street Traffic Interchange Questionnaire and Open House**

Dear constituent,

The Arizona Department of Transportation (ADOT) is currently undergoing an environmental study to potentially construct a traffic interchange (TI) at 32nd Street and the Loop 202 South Mountain Freeway. As part of the study, ADOT is requesting public input through June 4.

ADOT invites you to participate in a brief questionnaire regarding the environmental study of the proposed TI at 32nd Street and the Loop 202 South Mountain Freeway. Your input, along with potential environmental impacts (natural and human environment), will be included in the environmental study record used to make a decision on whether the 32nd Street TI is built.

There are several ways for you to participate:

- Fill out the questionnaire online at [www.32ndStreetStudy.com](http://www.32ndStreetStudy.com)
- Send an email to [SMFinterchangestudy@hdrinc.com](mailto:SMFinterchangestudy@hdrinc.com)
- Call the project line at (833) 310-2470
- Mail comments to c/o ADOT Communications, 101 N. 1<sup>st</sup> Avenue, Suite 1950, Phoenix, AZ 85003-1923
- Attend a public open house on May 22

The Pecos Segment Construction Update and 32nd Street TI open house will take place from **6 to 8 p.m. on Tuesday, May 22 at the Desert Vista High School cafeteria**, 16440 S. 32nd St., Phoenix. There is no formal presentation; however, attendees will have the opportunity to speak one-on-one with project staff about the TI Study, view renderings and provide input by completing the questionnaire in-person. Additionally, Connect 202 Partners, the developer building the freeway, will be available to answer construction-related questions.

The public comment deadline is **June 4, 2018**.

[Take the questionnaire now.](#)

We encourage you to view more information by visiting the [32<sup>nd</sup> Street Study website](#).

Thank you,



**From:** [SMF Interchange Study](#)  
**To:** [REDACTED]@kyrene.org; [REDACTED]@kyrene.org; [REDACTED]@tempeunion.org; [REDACTED]@tempeunion.org  
**Cc:** [SMF Interchange Study](#)  
**Subject:** ADOT - Loop 202 South Mountain Freeway - 32nd Street Traffic Interchange Questionnaire and Open House Notice  
**Date:** Thursday, May 3, 2018 10:54:00 AM

---

Good morning,

My name is Marsha Miller and I am the public outreach communications manager working on behalf of the ADOT South Mountain Freeway team. We have opened the public comment period for the environmental study of a proposed traffic interchange at 32<sup>nd</sup> Street and the Loop 202 South Mountain Freeway. The community can provide input by completing a questionnaire, sending us an email, calling the project line, commenting by mail, or attending the public open house on May 22.

We would greatly appreciate your assistance in sharing the below email with your parents, families, faculty, and staff. Please feel free to add any introduction language. Also, would you please let us know when you send the email out so we can keep track of it in our study record? Thank you!

**Email Subject: PLEASE READ! ADOT – Loop 202 South Mountain Freeway - 32nd Street Traffic Interchange Questionnaire and Open House**

Dear Parents and Families, Faculty and Staff,

The Arizona Department of Transportation (ADOT) invites you to participate in a brief questionnaire regarding the environmental study of a proposed new traffic interchange (TI) at 32nd Street and the Loop 202 South Mountain Freeway. Your input, along with potential environmental impacts (natural and human environment), will be included in the environmental study record used to make a decision on whether the 32nd Street TI is built.

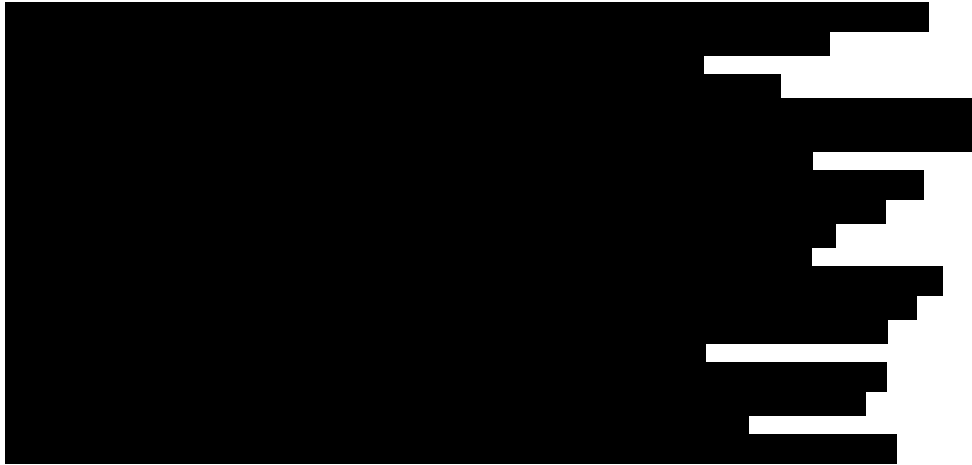
There will also be an opportunity for community members to complete this questionnaire in-person at the Pecos Segment Construction Update and 32nd Street TI Open House from 6 to 8 p.m. on Tuesday, May 22, at the Desert Vista High School Cafeteria. There is no formal presentation; however you can speak to members of the project team about the 32nd Street and Loop 202 South Mountain Freeway Study. Additionally, you can speak with team members from Connect 202 Partners about the Pecos Segment construction progress to date and what to expect for the rest of this year. If you are not able to provide input online, you can send an email to [SMFinterchangestudy@hdrinc.com](mailto:SMFinterchangestudy@hdrinc.com), call the project line at (833) 310-2470 or mail comments to c/o ADOT Communications, 101 N. 1<sup>st</sup> Avenue, Suite 1950, Phoenix, AZ 85003-1923.

The public comment deadline is **June 4, 2018**.

**[Take the questionnaire now.](#)**

We encourage you to view more information by visiting [www.SouthMountainFreeway.com](http://www.SouthMountainFreeway.com).

**From:** [SMF Interchange Study](#)  
**To:**



**Bcc:** [SMF Interchange Study](#)  
**Subject:** Arizona Department of Transportation - Proposed 32nd Street Traffic Interchange Study - Online Questionnaire  
**Date:** Tuesday, May 8, 2018 2:02:00 PM

---

Hello community leader,

The Arizona Department of Transportation is studying a proposed traffic interchange (TI) at 32nd Street and the Loop 202 South Mountain Freeway. The Study team encourages you to please invite those you represent to provide feedback regarding the study of the TI.

There are multiple ways to provide input through June 4:

- Complete the [online questionnaire](#),
- Send an email to [SMFinterchangestudy@hdrinc.com](mailto:SMFinterchangestudy@hdrinc.com),
- Call the project line at (833) 310-2470, or
- Attend a public open house on May 22 from 6 to 8 p.m. at the Desert Vista High School Cafeteria.

More information can be found on the [study website](#).

[Take the online questionnaire now!](#)

All comments must be submitted by June 4, 2018 to be included in the study record and considered in the decision.

Thank you for your participation!

ADOT Loop 202 South Mountain Freeway Project Team

**Email To:** Representative Jill Norgaard; City of Phoenix Councilman Sal DiCiccio; Maricopa County Supervisor Denny Barney; Senator Sean Bowie; Representative Mitzi Epstein; Senator Catherine Miranda; Representative Rebecca Rios; Representative Reginald Bolding; Representative Kate Gallego; Representative Kyrsten Sinema

**Subject:** Pecos Segment & 32nd Street TI Public Open House – Status

**Date sent:** March 19, 2018

---

This email provides you a brief construction update for all project segments. Additionally, ADOT is studying the feasibility of two interchanges, one in the Center Segment and the other in the Pecos Segment. Please see the attached project map and Construction Notice #3 for more details. The Loop 202/I-10 (Papago Freeway) traffic interchange is changing rapidly in the I-10 Segment including new access roads and ramps, sound walls, earthwork, and bridges.

Southern Avenue and the new Elliot Road bridge will open to traffic later this month in the Salt River Segment. Subsequently, Estrella Drive will close for three to five months for crossroad and bridge construction. Additionally, the Salt River bridges, significant earthwork, and utility relocations continue to progress.

In February, ADOT gave Connect 202 Partners notice to proceed on the Center Segment, the final 3-mile section of the Loop 202 between 51st Avenue and 32nd Lane. Pre-construction activities will begin this month with geotechnical borings, plant salvage, and establishment of construction access roads. Construction activities such as controlled rock blasting, earthwork, and building drainage culverts and bridges are anticipated to begin in May.

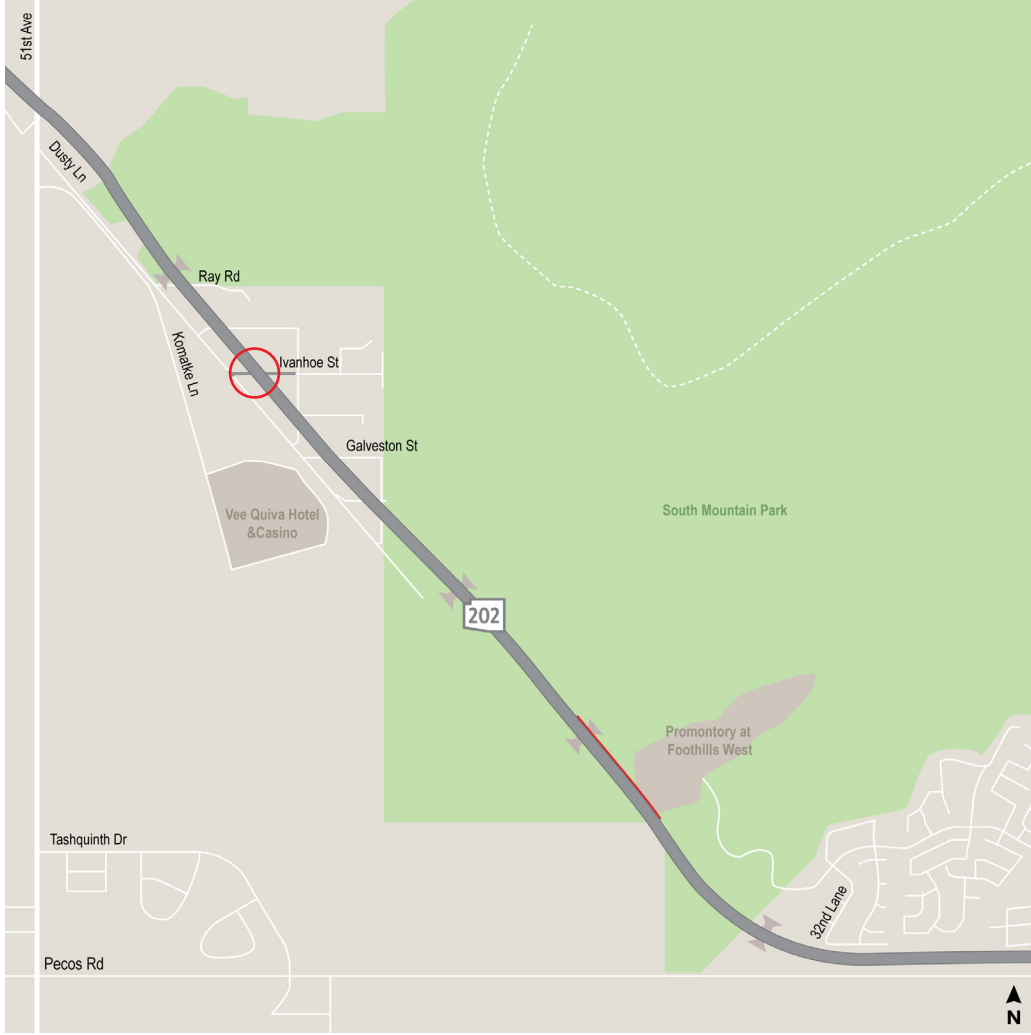
Construction continues to progress in the Pecos Segment. The 40th Street bridge was recently painted, a waterline is being relocated to Liberty Lane between Desert Foothills Parkway and 18th Way, controlled rock blasting is more than halfway complete, and sound walls are being built throughout the segment.

Ivanhoe Street Traffic Interchange: Currently, there are no freeway interchanges planned in this segment, but ADOT is studying the feasibility of adding an interchange at Ivanhoe Street based on feedback from the Gila River Indian Community. Community outreach over the next couple months will include notification to the residents near Dusty Lane as well as the GRIC.

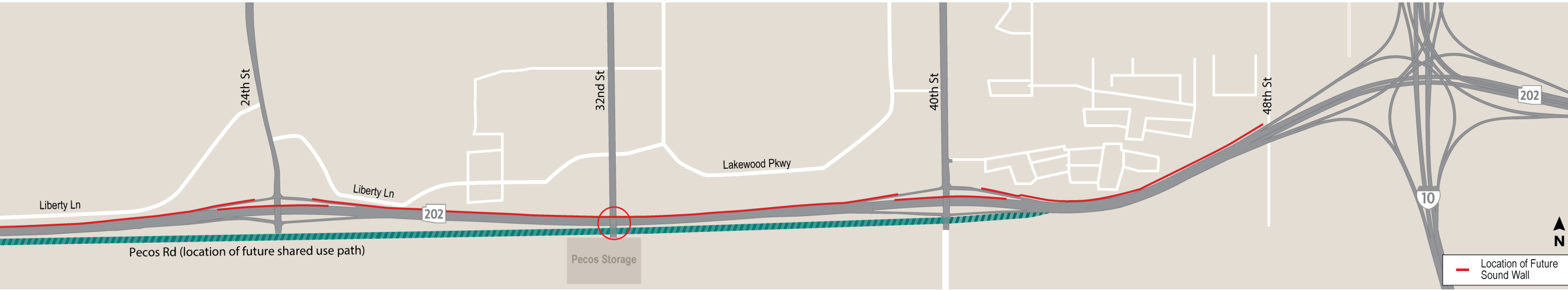
32nd Street Traffic Interchange: During a 2016 Pre-Design Public Input Meeting for the South Mountain Freeway in the Ahwatukee Village, the community expressed an interest in re-evaluating the need for an interchange at 32nd Street. ADOT is currently in the process of studying the feasibility of the interchange. Prior to an open house, tentatively scheduled for mid-May, an online questionnaire will be available to the community from approximately mid-April to mid-May. If you have any questions or would like an in-person briefing for more information, please feel free to contact me at [REDACTED].



Ivanhoe Street:



32nd Street:



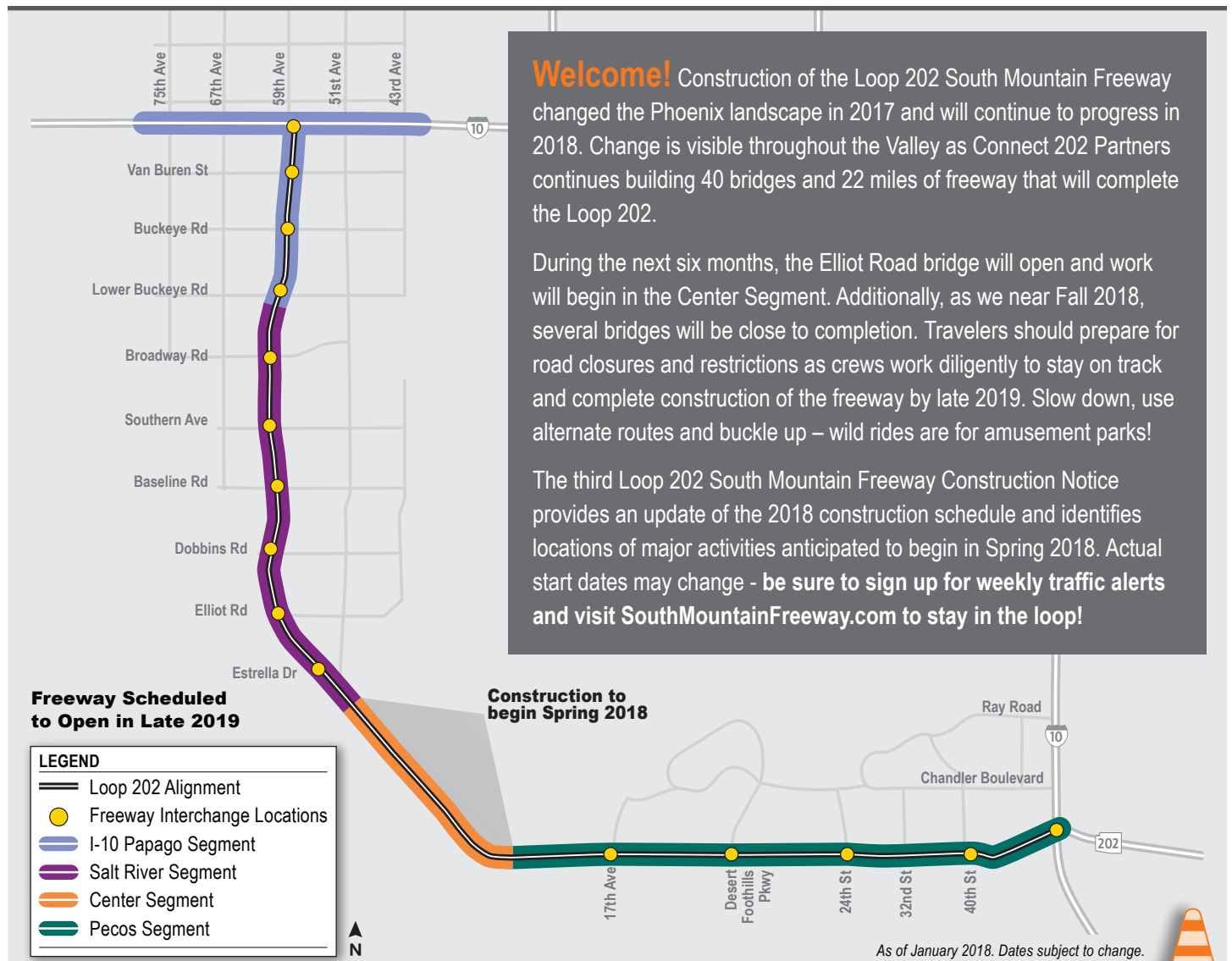
# CONSTRUCTION

Issue 3 | January 2018

# NOTICE



## CONSTRUCTION UNDERWAY IN MOST LOCATIONS



**Welcome!** Construction of the Loop 202 South Mountain Freeway changed the Phoenix landscape in 2017 and will continue to progress in 2018. Change is visible throughout the Valley as Connect 202 Partners continues building 40 bridges and 22 miles of freeway that will complete the Loop 202.

During the next six months, the Elliot Road bridge will open and work will begin in the Center Segment. Additionally, as we near Fall 2018, several bridges will be close to completion. Travelers should prepare for road closures and restrictions as crews work diligently to stay on track and complete construction of the freeway by late 2019. Slow down, use alternate routes and buckle up – wild rides are for amusement parks!

The third Loop 202 South Mountain Freeway Construction Notice provides an update of the 2018 construction schedule and identifies locations of major activities anticipated to begin in Spring 2018. Actual start dates may change - **be sure to sign up for weekly traffic alerts and visit [SouthMountainFreeway.com](http://SouthMountainFreeway.com) to stay in the loop!**

# I-10 PAPAGO SEGMENT

## Changes to I-10 Ramps

If you've driven on Interstate 10 in the West Valley, you have likely seen construction of the future Loop 202/I-10 Papago system interchange, which will continue through 2018. The new interchange will consist of six ramps, including two HOV direct connect ramps from northbound Loop 202 to eastbound I-10 and from westbound I-10 to southbound Loop 202. The interchange will also include new access roads providing connections between 51st and 67th avenues (see map).

Construction of the access roads will be completed over the next nine months, resulting in a change to how drivers access I-10 between 51st and 67th avenues. This work will require weekend closures of I-10 as well as long-term and permanent closures of existing on- and off- ramps. Direct access to I-10 from 59th Avenue will no longer be available when this work is complete.

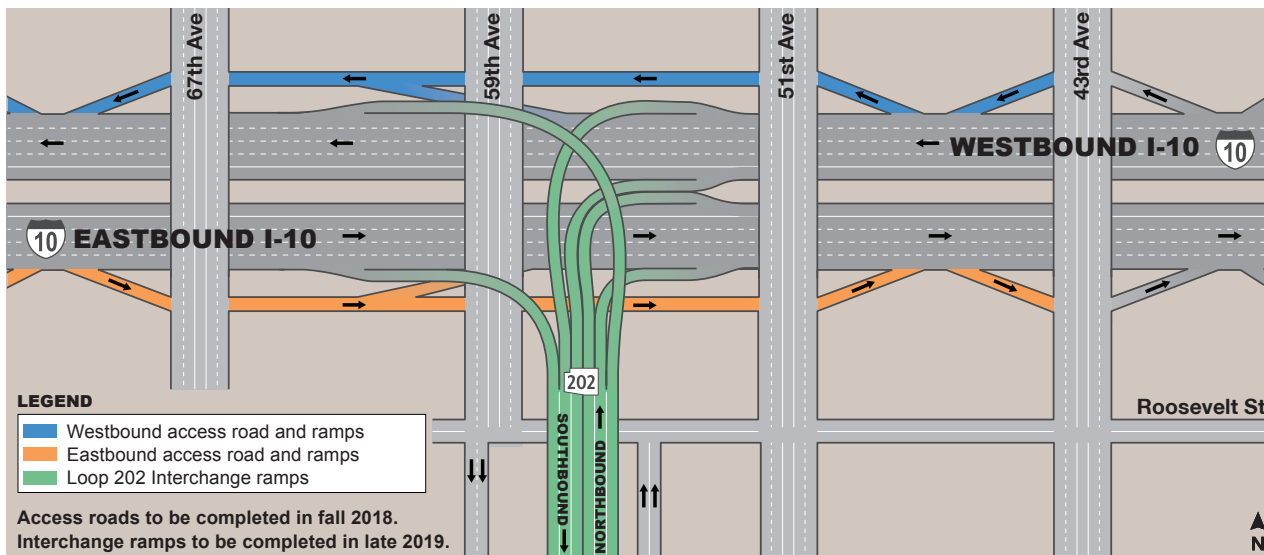
Residents should check SouthMountainFreeway.com and AZ511 before traveling on I-10. Commuters can expect continued delays and should consider using alternative routes, Valley Metro express bus service or visiting SharetheRide.com for information on car and vanpools.

## Anticipated Traffic Restrictions

To complete the work currently scheduled through mid-2018, the following street and freeway restrictions and closures are anticipated. Actual dates and times of restrictions and closures will be published in the weekly traffic alerts.

- Periodic weekend and night closures of I-10 Papago Freeway at 59th Avenue for bridge construction
- Extended closures of I-10 ramps from 67th to 51st avenues to allow reconstruction of existing ramps and construction of new access roads
- Permanent closure of 59th Avenue ramps after access roads open
- Truck dirt hauls at night along 59th Avenue
- Periodic restrictions on cross streets

## Future Loop 202/I-10 Interchange



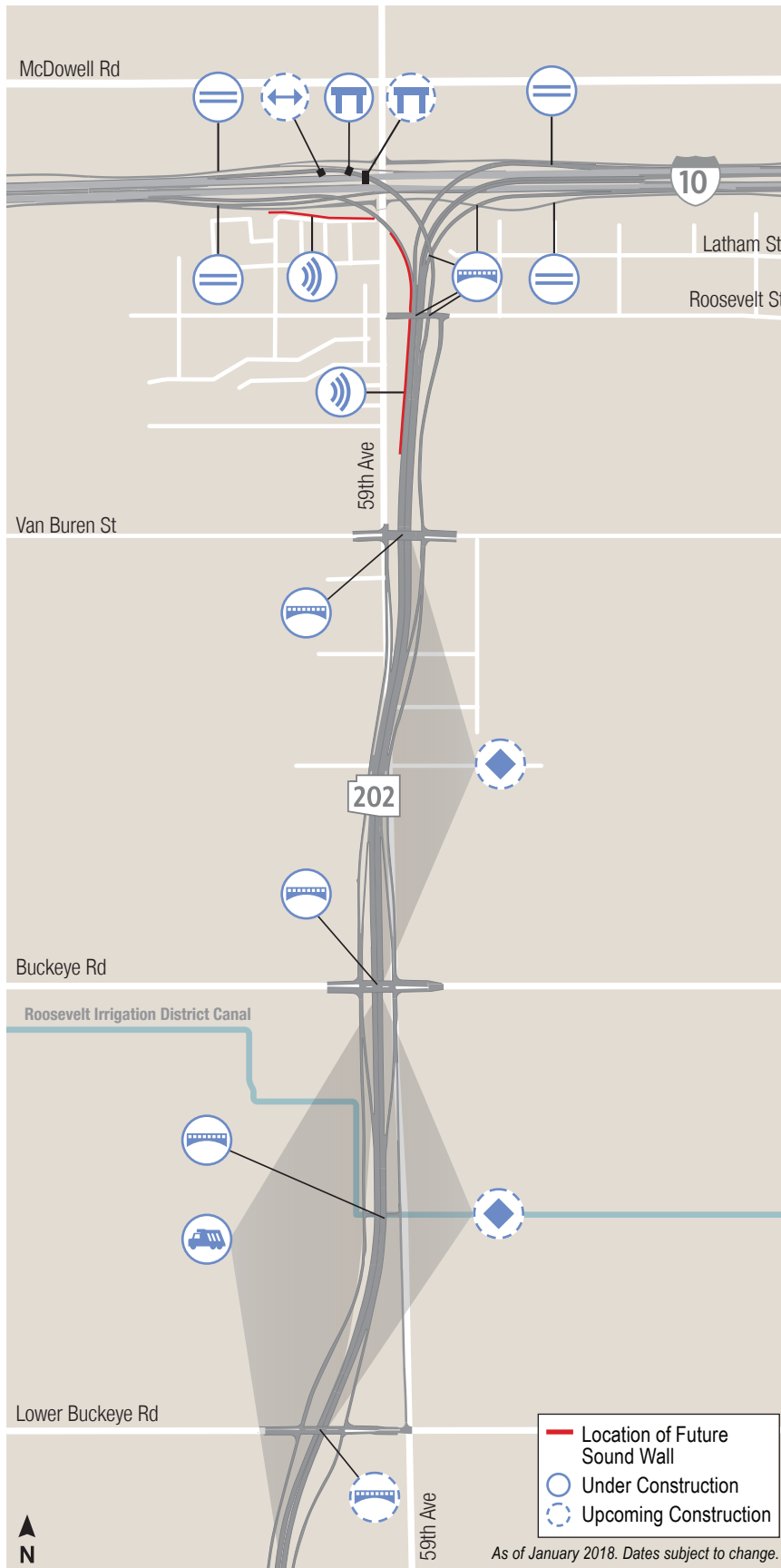
## I-10 Papago Segment Construction Schedule

Construction Activities	2018		
	Early	Mid	Late
I-10 Access Roads			
Bridges			
Dirt Hauls			
Widening I-10			
Sound Walls			
Straddle Bents			
Utility Relocation			

As of January 2018. Dates subject to change.



## I-10 Papago Segment Ongoing and Upcoming Construction



Building piers for a bridge over the Roosevelt Irrigation District canal



Constructing a flyover ramp from northbound Loop 202 to westbound I-10



Forming the falsework for a straddle bent over I-10 Papago Freeway

# PECOS SEGMENT

## Anticipated Traffic Restrictions

To complete the work currently scheduled through mid-2018, the following street restrictions and closures are anticipated. Actual dates and times of restrictions and closures will be published in the weekly traffic alerts.

- Weekend and night closures of arterial cross streets to complete bridge construction
- Temporary traffic restrictions on Pecos Road, Desert Foothills Parkway and 17th Avenue during controlled rock blasting
- Lane restrictions on local streets for utility relocations
- Traffic shifts on Desert Foothills Parkway for bridge construction
- Truck dirt hauls at night along Pecos Road



Pouring the 40th Street bridge deck

## Pecos Segment Construction Schedule

Construction Activities	2018		
	Early	Mid	Late
Bridges			
Drainage Culvert			
Dirt Hauls			
Earthwork/Blasting			
Mainline Paving			
Sound Walls			
Street Improvements			
Utility Relocation			
Desert Foothills Pkwy. Detour			

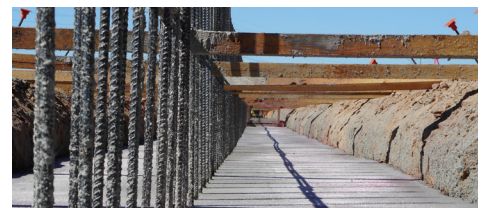
As of January 2018. Dates subject to change.



Completing the deck panels on the 17th Avenue bridge



Hauling dirt at night to build the freeway embankment



Setting the footing for the sound wall near 40th St.



Stacking block for the sound wall near 48th Street



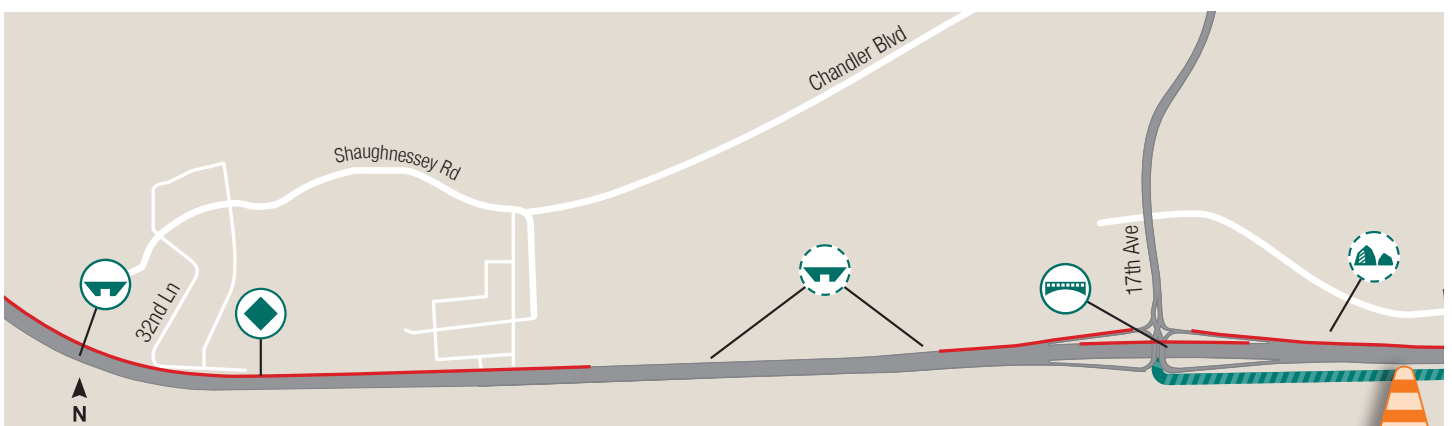
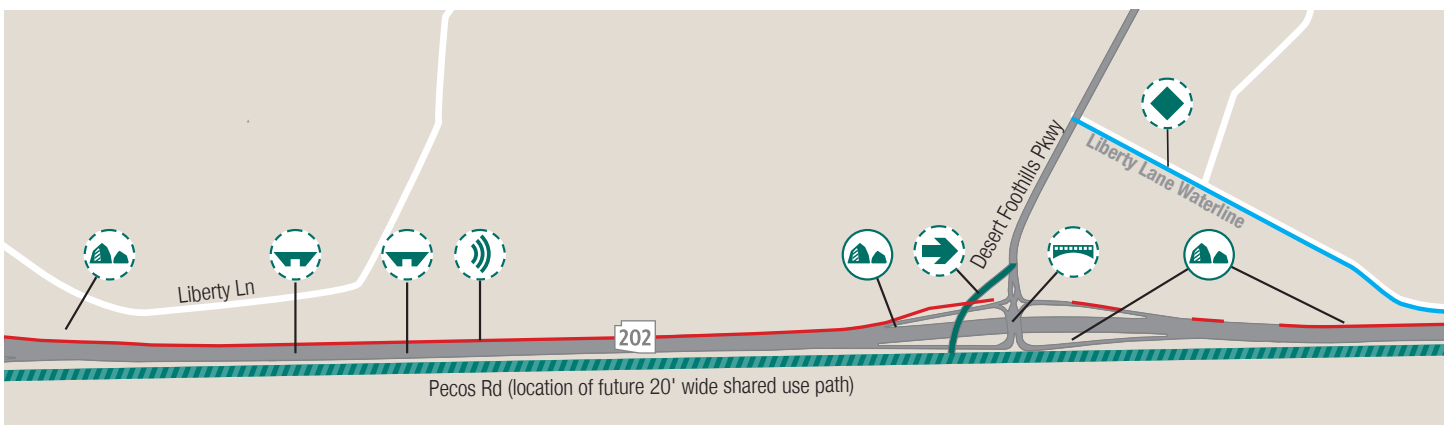
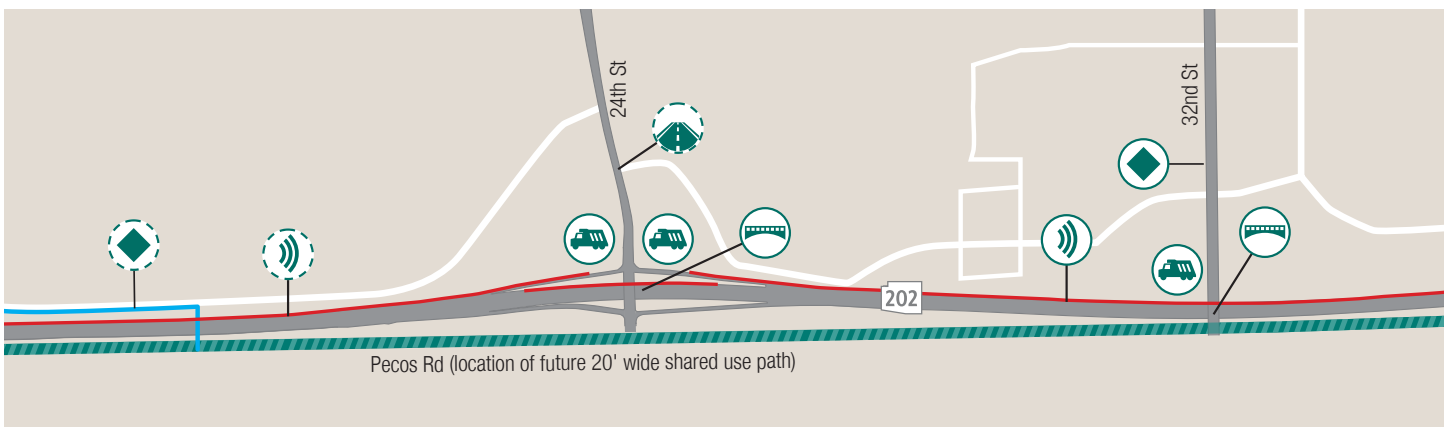
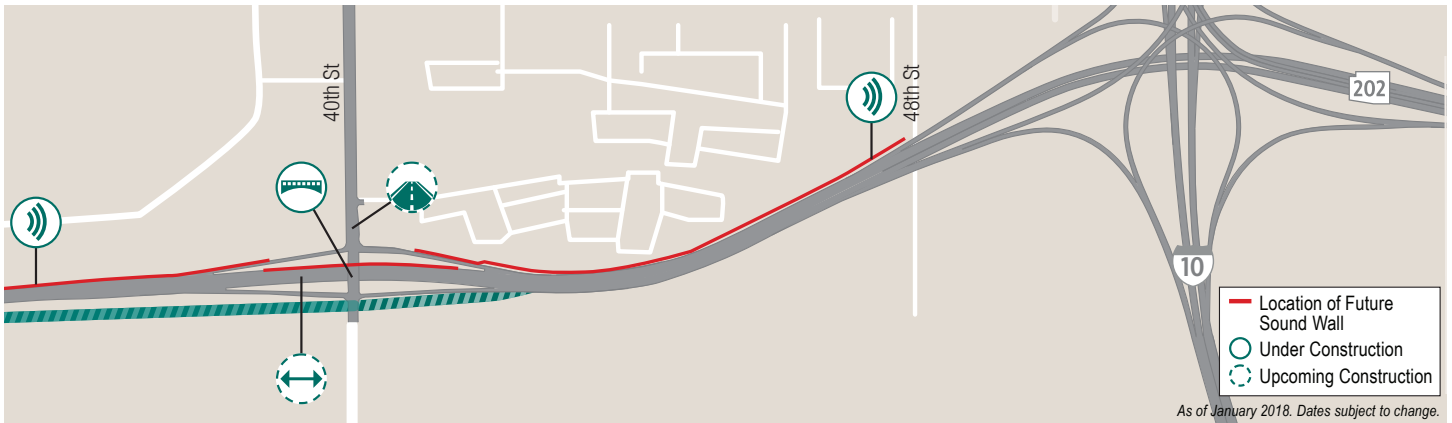
Transporting rock from controlled rock blasts



Placing a pre-cast culvert near 24th Street



## Pecos Segment Ongoing and Upcoming Activities



# SALT RIVER SEGMENT

## Anticipated Traffic Restrictions












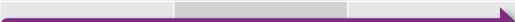
To complete the work currently scheduled through mid-2018, the following street restrictions and closures are anticipated. Actual dates and times of restrictions and closures will be published in the weekly traffic alerts.

- Closure of Southern Avenue between 61st Avenue and 64th Place through March 2018
- Closure of Elliot Road west of 59th Avenue through March 2018
- Closure of Estrella Drive between 59th and 51st avenues for up to 150 days
- Traffic shifts on Baseline Road between 63rd and 59th avenues for bridge construction
- Truck dirt hauls at night along Broadway Road and 59th Avenue



Closing Southern Avenue to expedite construction of street improvements

## Salt River Segment Schedule

Construction Activities	2018		
	Early	Mid	Late
 Bridges			
 Dirt Hauls			
 Drainage Culvert			
 Earthwork			
 Utility Relocation			
 Sound Walls			

As of January 2018. Dates subject to change.



Installing new drainage culvert at Elliot Road



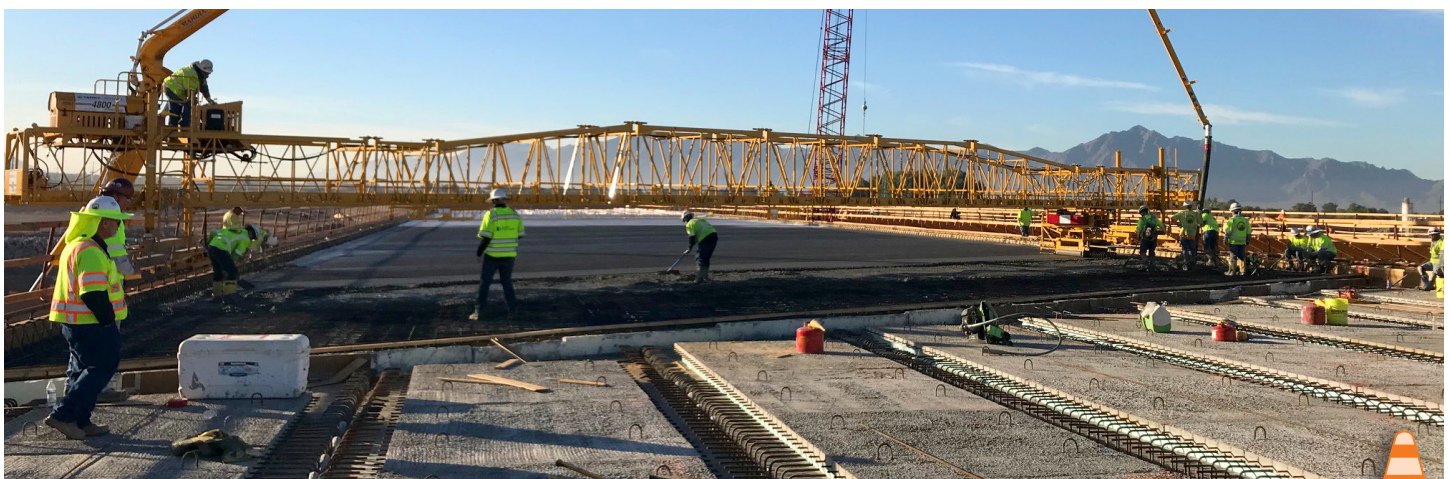
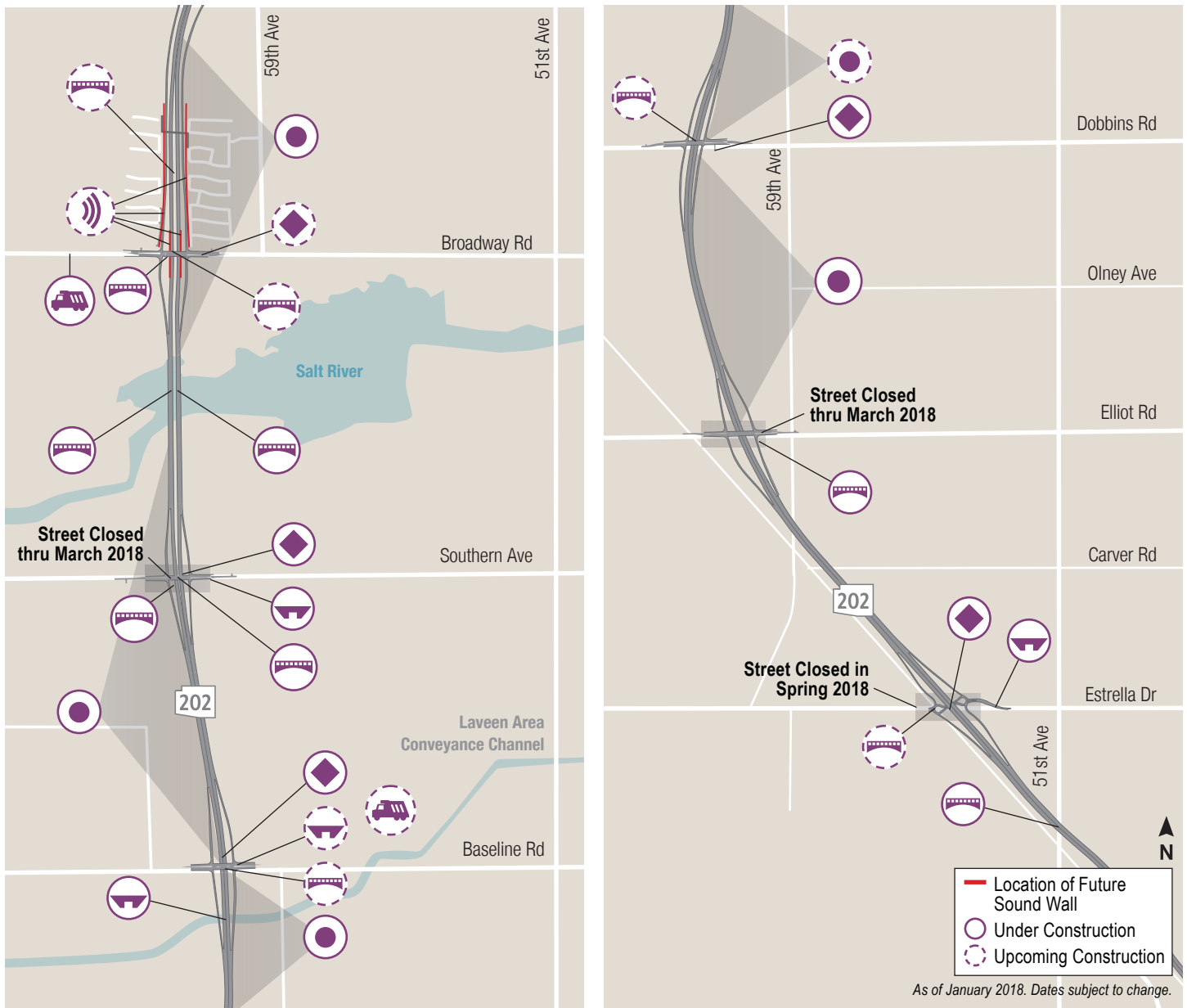
Digging to install drainage across Southern Avenue



Drilling shafts for bridge piers in the Salt River



## Salt River Segment Ongoing and Upcoming Activities



Finishing the concrete bridge deck on a Salt River bridge

## CENTER SEGMENT

Pre-construction activities in the Center Segment between 51st Avenue and 32nd Lane will begin in early 2018. These may include geotechnical borings, plant salvage and establishment of construction access roads. Construction activities are anticipated to begin in Spring 2018.



The Center Segment includes approximately three miles of new freeway.



The Arizona Department of Transportation, in partnership with the Arizona Game and Fish Department, Gila River Indian Community Department of Environmental Quality, South Mountain Park/Preserve and the City of Phoenix, is working to relocate as many chuckwallas as possible prior to the start of construction in the Center segment in early 2018.

LOOP 202  
*South Mountain*  
Freeway

**SIGN UP FOR WEEKLY**  
**TRAFFIC ALERTS**

[www.SouthMountainFreeway.com/FollowUs](http://www.SouthMountainFreeway.com/FollowUs)

Like us on Facebook: @SouthMountainFreeway

Follow us on Instagram: @SouthMountainFreeway

Website: [www.SouthMountainFreeway.com](http://www.SouthMountainFreeway.com)

Hotline: 1-855-SMF-L202 (1-855-763-5202)

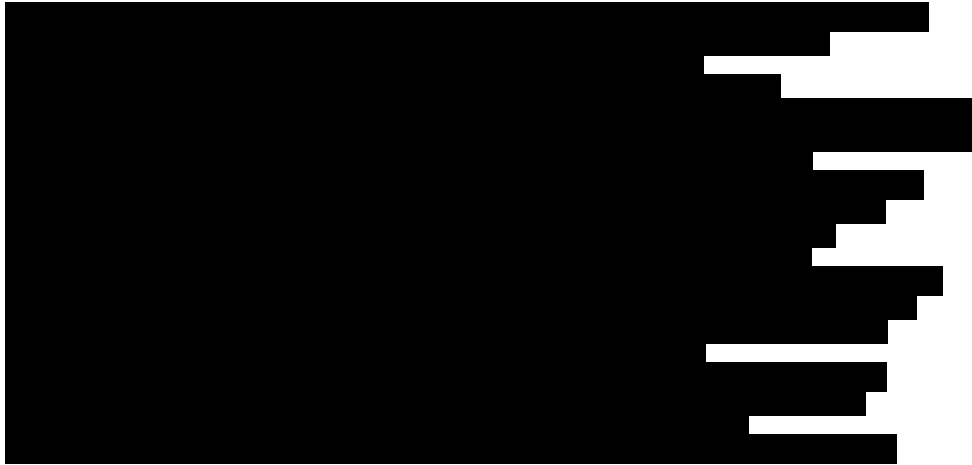
En español: 623-239-4558

Email: [SMFinfo@C202P.com](mailto:SMFinfo@C202P.com)

Pursuant to Title VI of the Civil Rights Act of 1964, and the Americans with Disabilities Act, ADOT and C202P do not discriminate on the basis of race, color, national origin, age, sex or disability. Persons who require reasonable accommodations based on language or disability should contact the South Mountain Freeway project team at 1-855-763-5202 or [SMFinfo@C202P.com](mailto:SMFinfo@C202P.com). Si usted necesita la ayuda de un traductor o interprete en español para la reunion, por favor comuníquese al 623-239-4558.



**From:** [SMF Interchange Study](#)  
**To:**



**Subject:** Arizona Department of Transportation - Proposed 32nd Street Traffic Interchange Study - Online Questionnaire  
**Date:** Tuesday, May 8, 2018 2:02:17 PM

---

Hello community leader,

The Arizona Department of Transportation is studying a proposed traffic interchange (TI) at 32nd Street and the Loop 202 South Mountain Freeway. The Study team encourages you to please invite those you represent to provide feedback regarding the study of the TI.

There are multiple ways to provide input through June 4:

- Complete the [online questionnaire](#),
- Send an email to [SMFinterchangestudy@hdrinc.com](mailto:SMFinterchangestudy@hdrinc.com),
- Call the project line at (833) 310-2470, or
- Attend a public open house on May 22 from 6 to 8 p.m. at the Desert Vista High School Cafeteria.

More information can be found on the [study website](#).

[Take the online questionnaire now!](#)

All comments must be submitted by June 4, 2018 to be included in the study record and considered in the decision.

Thank you for your participation!

ADOT Loop 202 South Mountain Freeway Project Team

**From:** [SMF Interchange Study](#)  
**To:**



**Subject:** Arizona Department of Transportation - Proposed 32nd Street Traffic Interchange Study - Online Questionnaire  
**Date:** Tuesday, May 8, 2018 2:08:00 PM

---

Hello community leader,

The Arizona Department of Transportation is studying a proposed traffic interchange (TI) at 32nd Street and the Loop 202 South Mountain Freeway. The Study team encourages you to please invite those you represent to provide feedback regarding the study of the TI.

There are multiple ways to provide input through June 4:

- Complete the [online questionnaire](#),
- Send an email to [SMFinterchangestudy@hdrinc.com](mailto:SMFinterchangestudy@hdrinc.com),
- Call the project line at (833) 310-2470, or
- Attend a public open house on May 22 from 6 to 8 p.m. at the Desert Vista High School Cafeteria.

More information can be found on the [study website](#).

[Take the online questionnaire now!](#)

All comments must be submitted by June 4, 2018 to be included in the study record and considered in the decision.

Thank you for your participation!

ADOT Loop 202 South Mountain Freeway Project Team

**From:** SMF Interchange Study  
**Sent:** Wednesday, May 9, 2018 9:16 AM  
**To:** SMF Interchange Study  
**Subject:** Arizona Department of Transportation - Proposed 32nd Street Traffic Interchange Study - Online Questionnaire

Hello community leader,

The Arizona Department of Transportation is studying a proposed traffic interchange (TI) at 32nd Street and the Loop 202 South Mountain Freeway. The Study team encourages you to please invite those you represent to provide feedback regarding the study of the TI.

There are multiple ways to provide input through June 4:

- Complete the [online questionnaire](#),
- Send an email to [SMFinterchangestudy@hdrinc.com](mailto:SMFinterchangestudy@hdrinc.com),
- Call the project line at (833) 310-2470, or
- Attend a public open house on May 22 from 6 to 8 p.m. at the Desert Vista High School Cafeteria.

More information can be found on the [study website](#).

**[Take the online questionnaire now!](#)**

All comments must be submitted by June 4, 2018 to be included in the study record and considered in the decision.

Thank you for your participation!

ADOT Loop 202 South Mountain Freeway Project Team



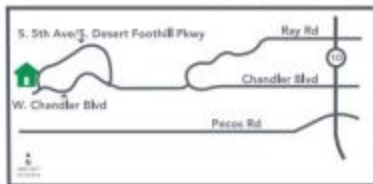




## AGELESS, LUXURY CONDOS NOW OPEN IN AHWATUKEE VANTAGE

**VANTAGE.** The state of great comfort and extravagant living.

These beautiful condos are nestled near the Ahwatukee foothills in a gated complex off Chandler Boulevard and 5th Avenue. Gorgeous slab granite countertops, modern cabinetry, built-in stainless steel appliances come standard and each home has its own attached 1 or 2-car garage. Homes range from approximately 1,432–2,067 sq. ft.



### Vantage by Shea Homes

Pricing from the \$270s.

15550 S 5th Ave, Phoenix, AZ 85045

5th Ave & Chandler Blvd

(480) 367-3659

[sheahomes.com](http://sheahomes.com)

Brokers must accompany prospects on their first visit to register. Pricing and availability subject to change without notice. Shea Homes Arizona Sales by Shea Homes Marketing Company (AZ DRE #0055551000). Construction by Shea Homes Limited Partnership (ROC 195895). This is not an offer of real estate for sale, nor solicitation of an offer to buy to residents of any state or province in which registration and other legal requirements have not been fulfilled. A PUBLIC REPORT IS AVAILABLE ON THE STATE REAL ESTATE DEPARTMENT WEBSITE. Shea Homes is a registered trademark of Shea Homes Limited Partnership. Equal Housing Opportunity. Shea Homes, Arizona Limited Partnership, 8800 N. Gurney Ctr. Drive, Ste. 350, Scottsdale, AZ 85258. Models are not an indication of racial preference. Artist rendering subject to change. Photos depict optional items and other upgrades that may be available from Seller at an additional cost. Furniture and other designer features are not included or available for purchase (even upon the payment of an additional charge). © 2017 Shea Homes, Inc. All rights reserved.



### Featured Amenities:

- Gated Community
- 2 Community Pools & Spa
- BBQ's with Ramada
- Clubhouse with Exercise Room & Theater
- Close to Shopping, Restaurants & Golf



## OCOTILLO FOOT & ANKLE CENTERS

PODIATRIC SURGEONS OF THE EAST VALLEY

(480) 895-0276

[www.ocotillofootankle.com](http://www.ocotillofootankle.com)

Same Day Appointments

Most Insurances Accepted



Mark Habert, DPM • Mary Peters, DPM • V. Chandrasekhar, DPM

### TWO LOCATIONS!



**CHANDLER**  
270 W. Chandler Heights Rd.  
Chandler, AZ 85048  
(480) 895-0276

**AHWATUKEE**  
13838 S. 46th Pl. #105  
Phoenix, AZ 85044  
(480) 940-5172



Both locations open Monday - Friday, extended appointment hours available in-office X-rays, casting, Ultrasound and more.

## POTTERYLAND LLC.com

Family managed since 1981

### WHOLESALE to the TRADES

LOWEST PRICES, LARGEST SELECTION!  
HUGE SELECTION OF OVERSIZED POTTERY! PET FRIENDLY!

480-802-1309  
Southern Chandler  
23843 S. Cooper Rd.  
1/4 Mile S. of Chandler Heights Rd.  
Hours: Thursday thru Monday 9:00 am - 5:00 pm  
CLOSED TUESDAYS & WEDNESDAYS

- Fountains
- Benches
- Bird Baths
- Ceramics
- Stoneware
- Wrought Iron
- Oversized Pottery
- Metal Wall Decor
- Indoor/Outdoor Decor
- Much More!

## GetOut

Find GetOut in AHWATUKEE FOOTHILLS NEWS

GetOut. GetConnected.

[ahwatukee.com/arts\\_life/](http://ahwatukee.com/arts_life/)  
[facebook.com/getoutaz](https://facebook.com/getoutaz)  
[twitter.com/getoutaz](https://twitter.com/getoutaz)

## Autobahn Collision

Does your vehicle have damage? We can fix that!

- Manufacturer Certified
- Easy Insurance Processing
- No-Charge Loaner Vehicles
- Free Body & Paint Estimates

[AutobahnCollision.com](http://AutobahnCollision.com)

Just North of the SanTan 202 Freeway off Gilbert Road!

(480) 786-1000

2555 East Willis Road  
Chandler, AZ 85286

## LOOP 202 South Mountain Freeway

### Construction Update | 32nd Street Traffic Interchange Open House

Actualización de la Construcción | Reunión Pública sobre el Intercambio de tráfico en la calle 32

As part of the environmental study process, the Arizona Department of Transportation (ADOT) invites you to attend a neighborhood open house to provide input on the proposed traffic interchange at 32nd Street and the Loop 202 South Mountain Freeway. Attendees will have the opportunity to view renderings and provide input by completing a questionnaire in person. There is no formal presentation; however, the public can speak one-on-one with project staff about the study. Additionally, Connect 202 Partners, the developer building the freeway will be available to answer construction-related questions.

- View proposed interchange design plan
- Discuss construction progress

### Can't make it to the Open House?

Take the online questionnaire or submit your comments by email, project line, or direct mail no later than June 4, 2018.

Como parte del proceso del estudio ambiental, el Departamento de Transporte de Arizona (ADOT por sus siglas en inglés) le invita a que asista a la reunión pública en su vecindario en la cual se proporcionará información sobre el intercambio de tráfico en la calle 32 y el Periférico 202 de la carretera South Mountain. Los asistentes tendrán la oportunidad de ver una presentación y proporcionar sus comentarios completando un cuestionario en persona. No habrá una presentación formal; sin embargo, el público podrá hablar de manera individual con un representante del proyecto. Además, el equipo constructor, Connect 202 Partners (por su nombre en inglés) estará disponible para responder preguntas relacionadas con la construcción.

- Diseño del intercambio propuesto
- Discusión del progreso de la construcción

### ¿No puede asistir a la reunión?

Complete el cuestionario en línea o envíe sus comentarios por correo electrónico, correo postal o llame a la línea directa del Proyecto no tarde del 4 de junio del 2018.

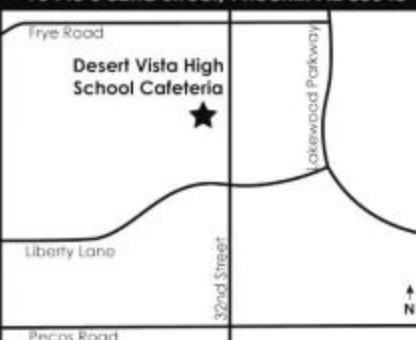
[32ndStreetStudy.com](http://32ndStreetStudy.com)

[SMFinterchangestudy@hdrinc.com](mailto:SMFinterchangestudy@hdrinc.com)

833-310-2470

c/o ADOT Communications  
101 N. 1st Avenue, Suite 1950  
Phoenix, AZ 85003-1923

Tuesday, May 22 | 6 p.m. - 8 p.m.  
16440 S 32nd Street, Phoenix AZ 85048



## KEYSTONE MONTESSORI

A Foundation for a Lifetime of Learning

Toddler • Primary • Elementary • Adolescent



Keystone Montessori has provided my children with a warm and nurturing environment in which to develop their love of learning. The teachers, staff, and parent community all work together to ensure our children receive an outstanding education that focuses not only on academics, but also on grace, courtesy, and respect for their community. We love Keystone!

- Parent Testimonial

[www.keystonemontessori.com](http://www.keystonemontessori.com) • (480) 460-7312  
1025 E. Liberty Ln., Phoenix, AZ 85048 (Across the street from the YMCA)