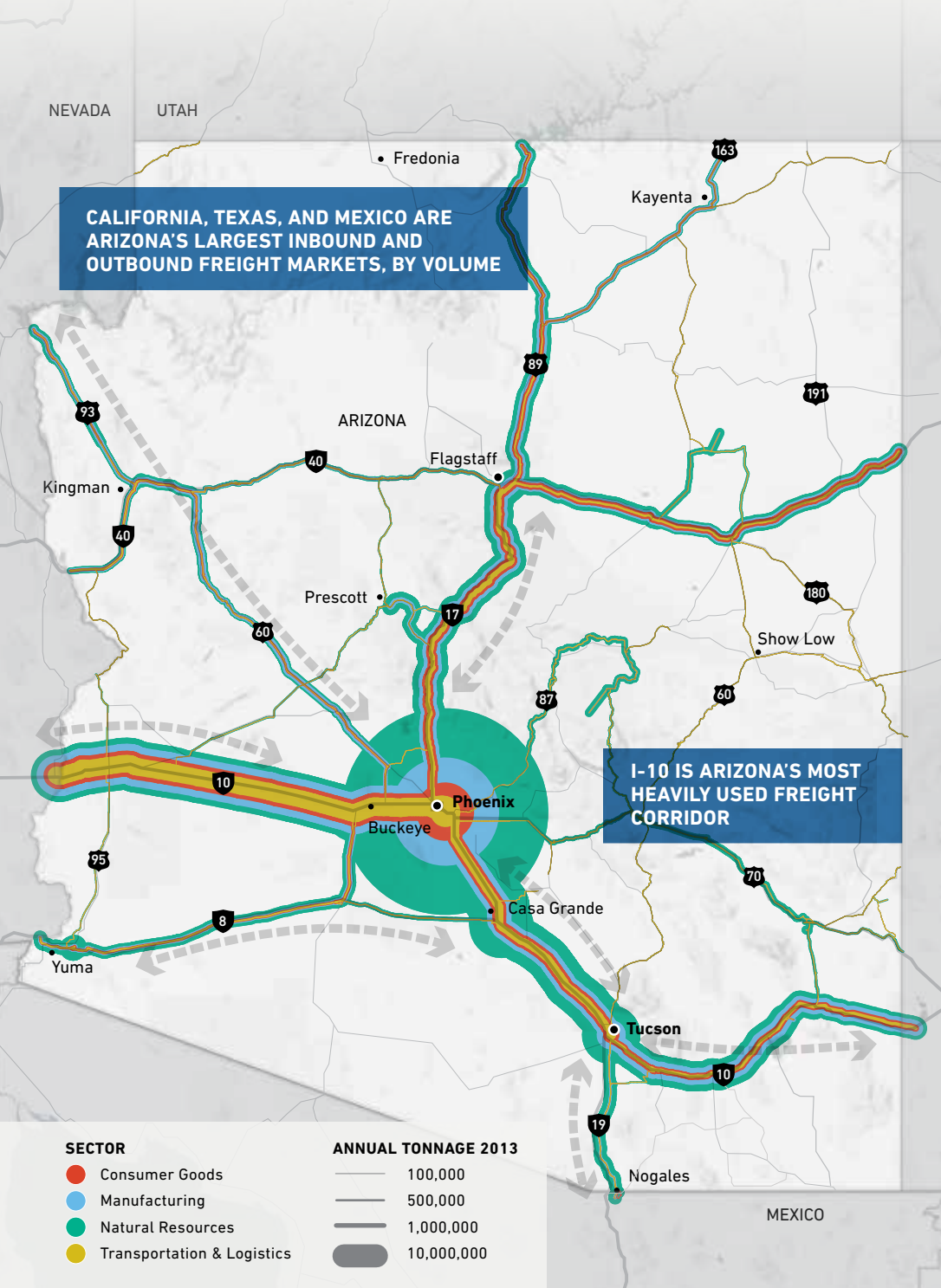


WHAT ARE ARIZONA'S FREIGHT SYSTEM NEEDS?

- Overall, Arizona's freight system is in good condition and provides reliable goods movement on about 86 percent of the state's Interstates
- Recurring peak congestion and bottlenecks in and around urban centers, particularly Phoenix, negatively impacts system performance and economic competitiveness
- Other non-recurring issues include road construction-related lane closures, crashes, weather events, border delays, and lack of safe truck parking



WHAT IS NEXT?

BUILDING ON THE RECENTLY COMPLETED FREIGHT PLAN, ADOT IS:

- Implementing the projects identified in the Freight Plan
- Assessing statewide truck parking needs and identifying solutions
- Continuing to work with freight stakeholders statewide to overcome mobility issues
- Coordinating with Arizona's Metropolitan Planning Organization (MPO), Council of Governments (COG), and other local agencies
- More fully integrating freight into the state's overall planning process
- Preparing for an update of the Freight Plan every 5 years as required by federal law

ADOT

Arizona State Freight Plan

To

AZ

FOR MORE INFORMATION CONTACT:
Charla Glendening, AICP
Assistant Manager of Planning and Programming
602-712-7376

A To Z Arizona State Freight Plan

THE VISION

Arizona's freight transportation system enhances economic competitiveness and quality growth through effective system performance and management

THE OBJECTIVES

- 1 ECONOMIC COMPETITIVENESS
- 2 INCREASE SYSTEM PERFORMANCE
- 3 IMPROVE SYSTEM MANAGEMENT

WHAT IS A STATE FREIGHT PLAN?

- Federal law (FAST Act) requires states to develop a state freight plan in order to receive National Highway Freight Program (NHFP) funding for freight projects
- On November 15, 2017, FHWA approved the Arizona State Freight Plan, enabling Arizona to use \$95.7 million in NHFP funding for freight projects
- Arizona's State Freight Plan is a strategy to help improve the movement of freight statewide
- The Arizona State Freight Plan identifies transportation system improvements that will enhance Arizona's ability to attract investment, create jobs, and realize economic growth

HOW DID ADOT DEVELOP THE FREIGHT PLAN?

- ADOT worked with local governments and freight-dependent businesses from February 2015 through November 2017 to develop the vision and goals of the Freight Plan, identify current and future transportation system needs, and recommend solutions for implementation
- The Arizona Freight Advisory Committee, comprised of government and business leaders, advised ADOT on the development of the Freight Plan and will continue to advise ADOT on freight issues
- ADOT consulted with industries statewide and used the latest truck traffic, commodity flow, economic, and performance data to establish system performance, Arizona supply chains, and identify freight corridors, bottlenecks, and safety hotspots

WHAT IS THE ECONOMIC IMPACT OF ARIZONA'S FREIGHT DEPENDENT INDUSTRIES?

MANUFACTURING



General Manufacturing: Almost 29% of Arizona exports, primarily medical, chemical, metal, and machinery manufacturing

High Tech Manufacturing: Over 34% of Arizona exports, primarily semi-conductors and other electronics

Transportation Equipment Manufacturing: Strong aerospace industry (4th in the U.S. for payroll and revenue)

TRANSPORTATION & LOGISTICS



Transportation & Logistics: Employs over 92,000 people and home to two of the largest trucking companies in the U.S.

NATURAL RESOURCES



Mining: Ten mines in Arizona focused largely on copper

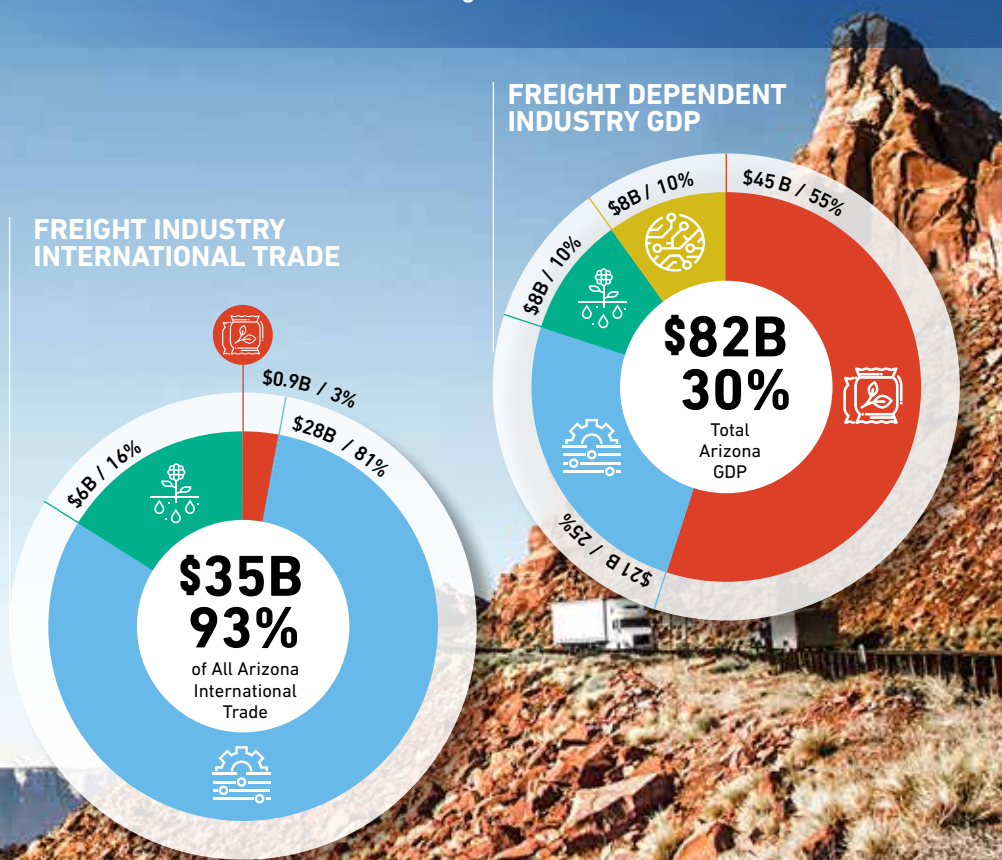
Agriculture: Outputs include milk, cattle, and about 90% of all U.S. leafy vegetables during winter months

CONSUMER GOODS



Wholesale & Retail: Largest total employment of all freight dependent industries and generates 28 millions tons of freight annually

Food & Beverage: Some value added processing and manufacturing of dairy, meat, beverages, bakery products, and tortilla manufacturing



WHAT PROJECTS WILL ADOT IMPLEMENT BETWEEN NOW AND 2021?

HOW MUCH WILL IT COST?

THE FREIGHT PLAN IDENTIFIED NEARLY

\$6B

In needs statewide

SIX FREIGHT PROJECTS FUNDED

\$95.7M

Total National Highway Freight Program expenditure in Arizona

\$91.5M

Other Federal Funding

\$64.2M

State Funds

THE NEAR-TERM IMPROVEMENTS FUNDED IN THE FREIGHT PLAN ARE

±4%

of total freight needs

