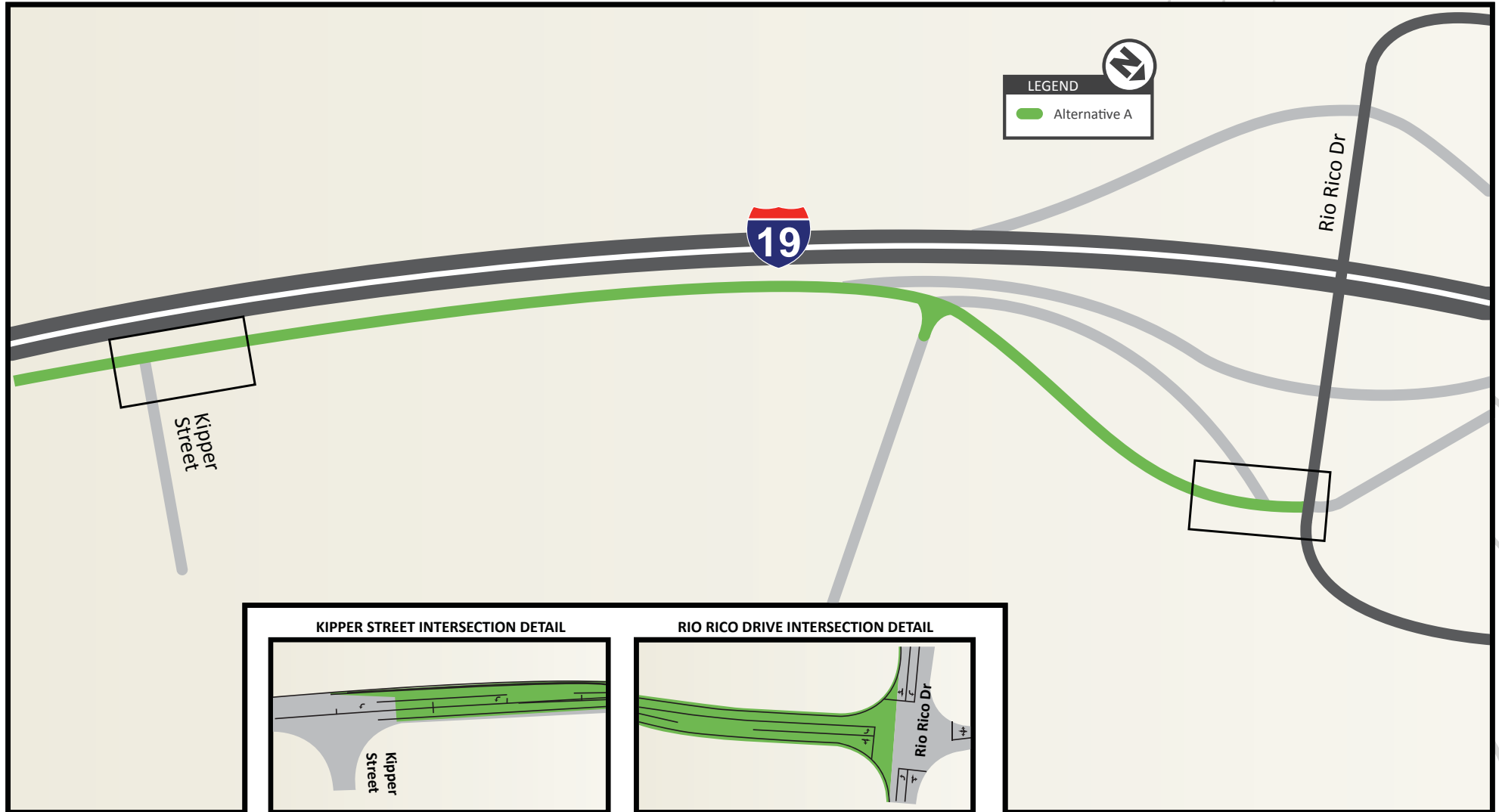




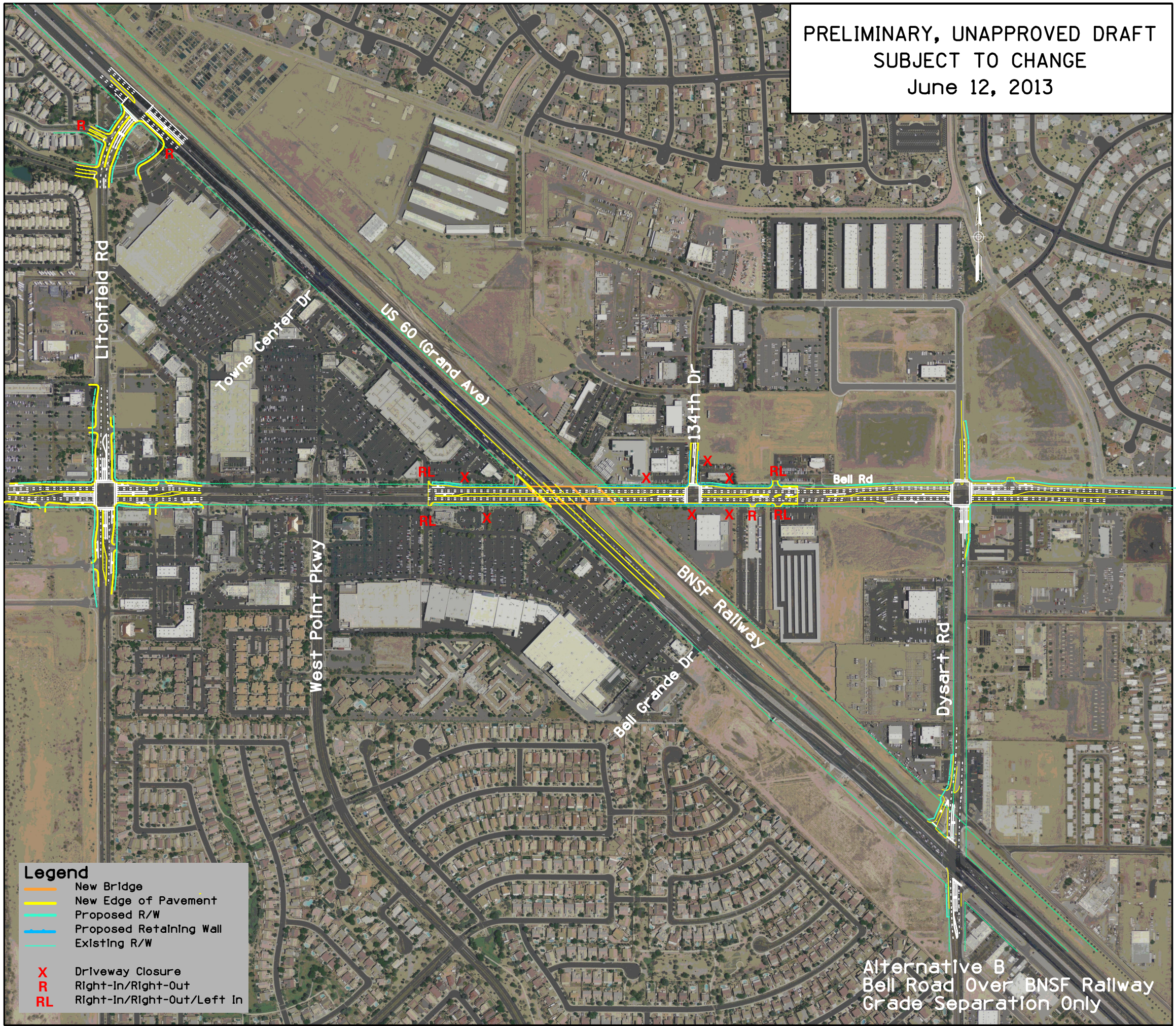
I-19 East Frontage Road Study (RUBY ROAD TO RIO RICO DRIVE)

ALTERNATIVE A

TWO-WAY EAST FRONTAGE ROAD, KIPPER STREET - RIO RICO DRIVE



PRELIMINARY, UNAPPROVED DRAFT
SUBJECT TO CHANGE
June 12, 2013





I-19 East Frontage Road Study (RUBY ROAD TO RIO RICO DRIVE)

ALTERNATIVE B1

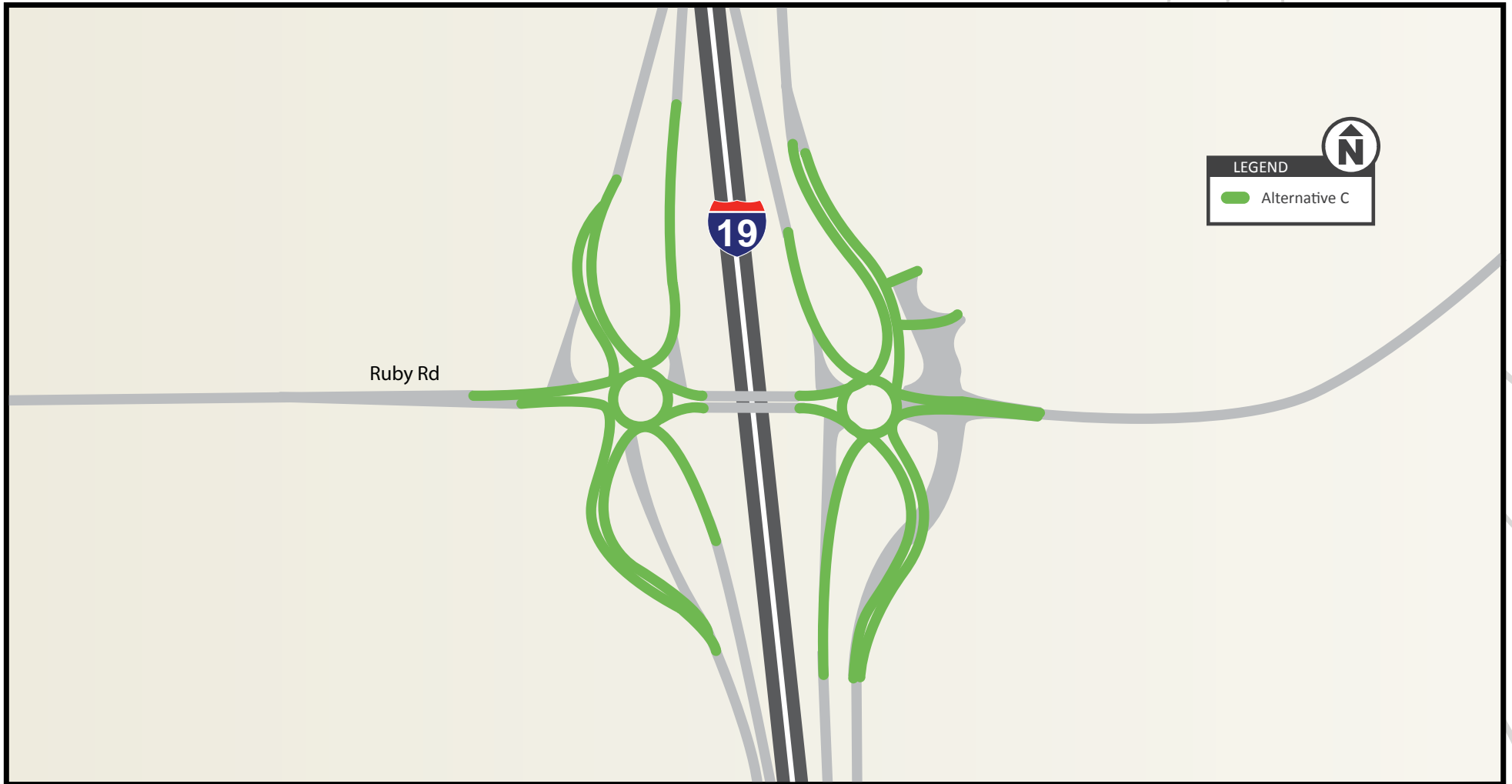
ONE-WAY EAST EAST FRONTAGE ROAD SOUTH OF RUBY ROAD
SOUTHBOUND ACCESS VIA I-19





I-19 East Frontage Road Study (RUBY ROAD TO RIO RICO DRIVE)

ALTERNATIVE C ROUNDBOUT INTERCHANGE





I-19 East Frontage Road Study (RUBY ROAD TO RIO RICO DRIVE)

ALTERNATIVE D
DIVERGING DIAMOND INTERCHANGE



The PEL Process

What is a Planning and Environmental Linkages (PEL) Study?

A PEL Study is the interim step of evaluation for a transportation need or project that has been identified in the regional transportation plan, yet has not entered a formal NEPA-level analysis. The purpose of a PEL Study is to perform preliminary analysis and make decisions not completed as a part of traditional regional level planning that will make NEPA level evaluation and decision-making more transparent to resource agencies and the public.

PEL represents an approach to transportation decision-making that considers environmental, community, and economic goals early in the planning stage and carries them through project development, design, and construction. This can lead to a seamless decision-making process that minimizes duplication of effort, promotes efficient and cost-effective solutions and environmental stewardship, and reduces delays in project implementation.

Even though a preferred alternative may be identified in the early planning stage, the PEL process requires that all reasonable alternatives are carried forward into a NEPA study.

Who is Involved?

