



## Connecting to WEB-apps through Citrix

### Installing the Citrix Receiver Client (Optional)

Installation of the Citrix Receiver Client on the computer from which you're connecting is optional. Browse to <http://www.citrix.com/clients> and download the appropriate "Receiver" for your operating system. Install the downloaded client; a reboot may be required after installation. Towards the end of the installation you will get the prompt pictured below, just click **Cancel**. The installation will be done.



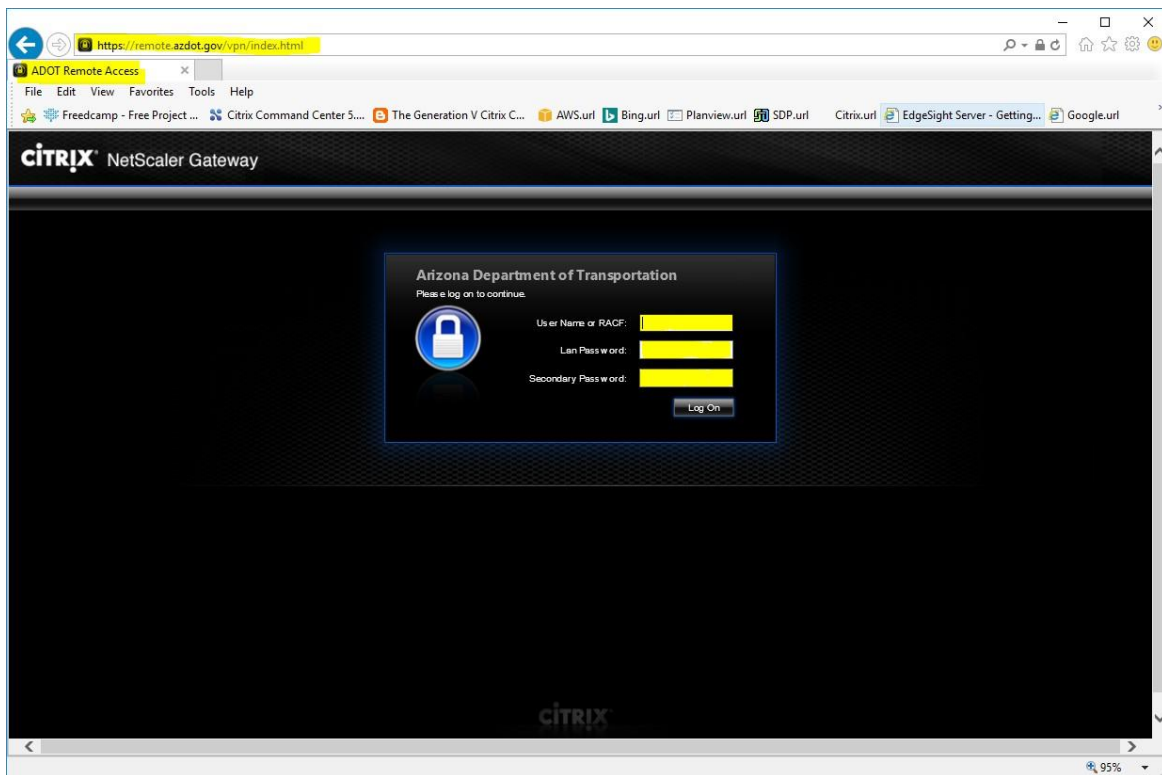
### Logging on to ADOT Remote Access

The Citrix Receiver only works with the IE and FireFox Browsers. All other browsers use HTML5 and do not require the Citrix Receiver to work.

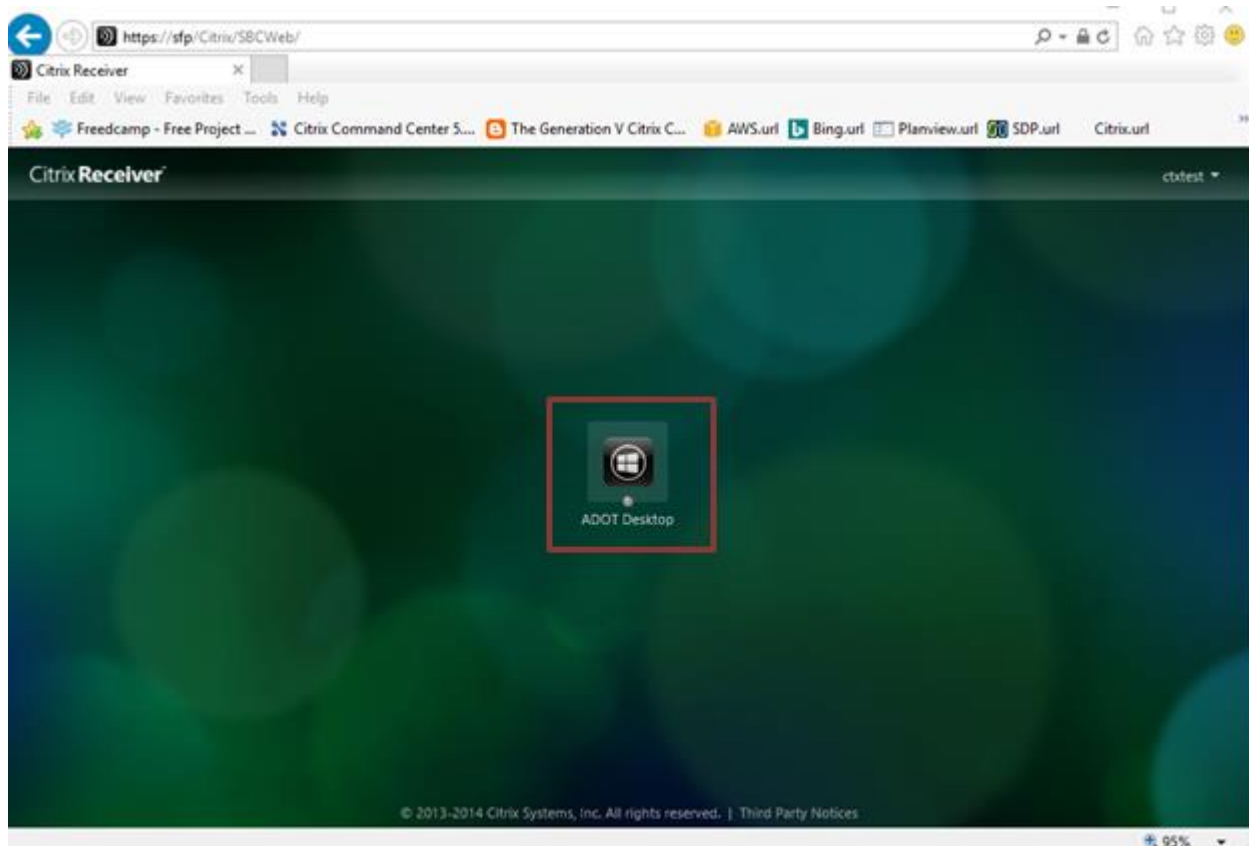
Please proceed to the following URL to access ADOT's Remote Access resources: <https://remote.azdot.gov>, this will take you to ADOT's Remote Access logon page. Enter the following:

- User Name or RACE: Your **RACF**
- LAN Password: Your normal, day-to-day, Active Directory Password
- Secondary Password: Crypto card security password

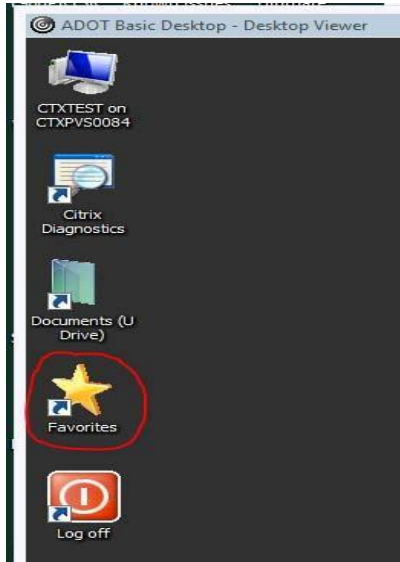
Once the information is correctly entered, click the **Log On** button.



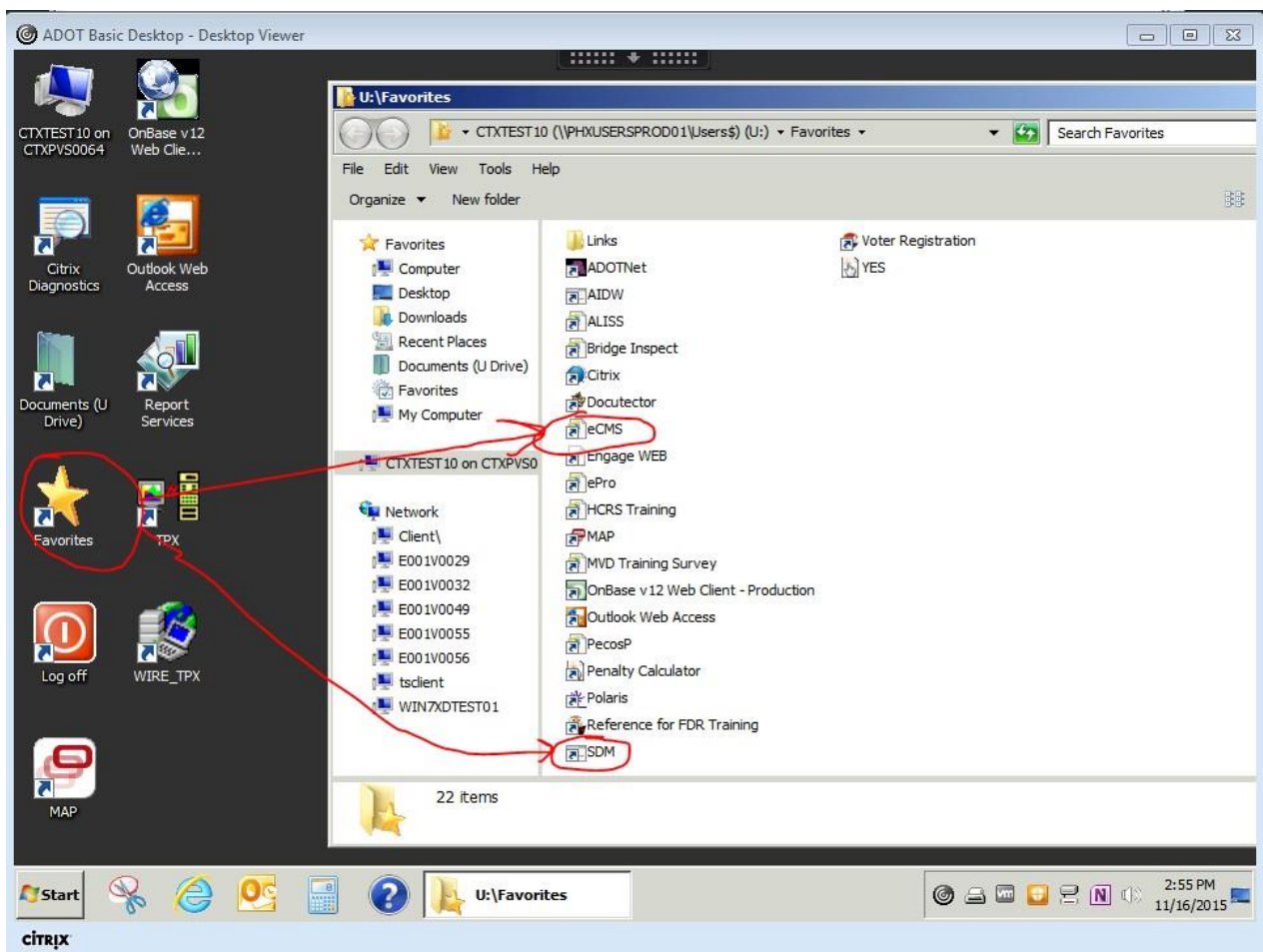
In order to access **eCMS**, **SDM** or any other **Citrix apps**, users can launch the **“ADOT Desktop”** or any other Citrix desktop available for them via Citrix portal



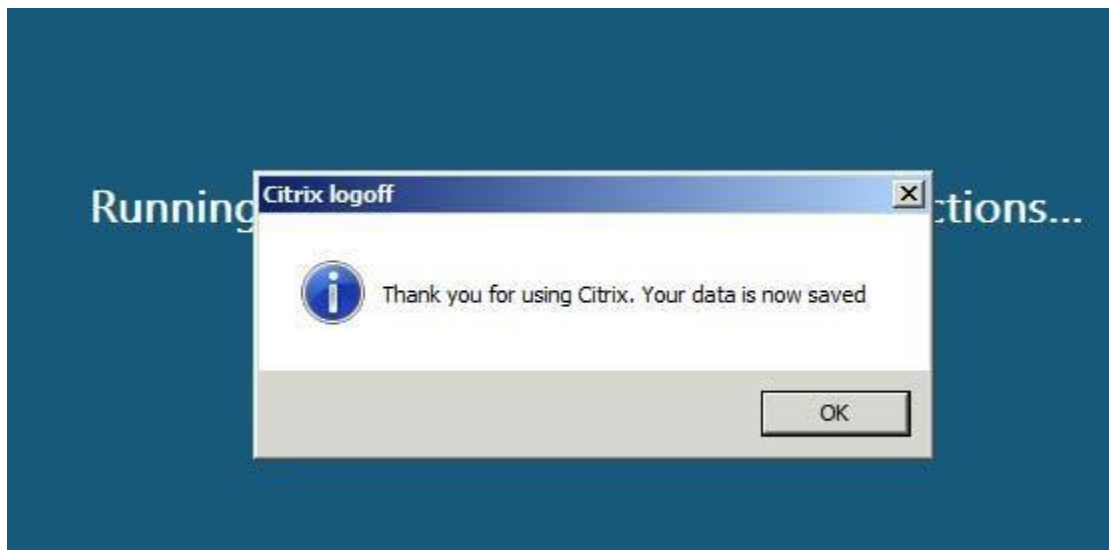
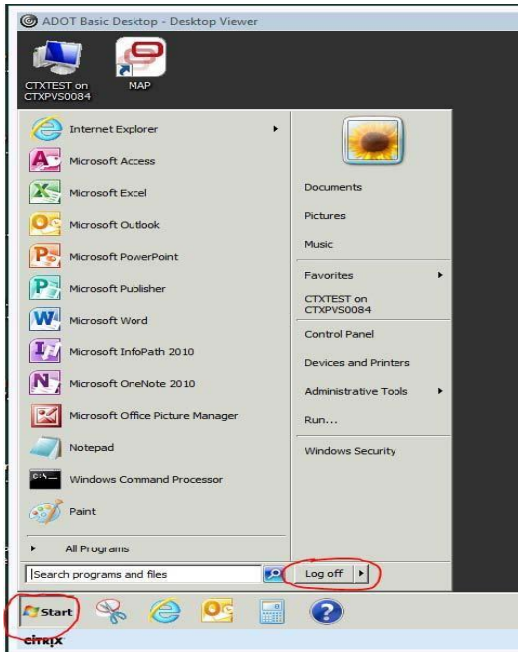
Once logged in to your **Citrix Desktop**, all ADOT Citrix applications will be available via the “**Favorites**” shortcut represented by **Star Icon**.



Open **Favorites** shortcut to run your respective **application** as shown below.



To log off properly, please use the “Log off” option found after clicking on the Start icon. Once “Log off” is selected, you’ll see the Citrix logoff menu while the system saves your settings. Once that is complete, the log off will complete.



### **Obtaining Additional Assistance**

For additional assistance, please contact the [ADOT Service Desk at 602.712.7249](tel:602.712.7249). Due to the wide variation in non-ADOT computer and home network configurations, support for personally owned computers is limited.