

IPaC resource list

This report is an automatically generated list of species and other resources such as critical habitat (collectively referred to as *trust resources*) under the U.S. Fish and Wildlife Service's (USFWS) jurisdiction that are known or expected to be on or near the project area referenced below. The list may also include trust resources that occur outside of the project area, but that could potentially be directly or indirectly affected by activities in the project area. However, determining the likelihood and extent of effects a project may have on trust resources typically requires gathering additional site-specific (e.g., vegetation/species surveys) and project-specific (e.g., magnitude and timing of proposed activities) information.

Below is a summary of the project information you provided and contact information for the USFWS office(s) with jurisdiction in the defined project area. Please read the introduction to each section that follows (Endangered Species, Migratory Birds, USFWS Facilities, and NWI Wetlands) for additional information applicable to the trust resources addressed in that section.

Location

Maricopa County, Arizona



Local office

Arizona Ecological Services Field Office

☎ (602) 242-0210
📠 (602) 242-2513

9828 North 31st Ave
#c3
Phoenix, AZ 85051-2517

<http://www.fws.gov/southwest/es/arizona/>
http://www.fws.gov/southwest/es/EndangeredSpecies_Main.html

Endangered species

This resource list is for informational purposes only and does not constitute an analysis of project level impacts.

The primary information used to generate this list is the known or expected range of each species. Additional areas of influence (AOI) for species are also considered. An AOI includes areas outside of the species range if the species could be indirectly affected by activities in that area (e.g., placing a dam upstream of a fish population, even if that fish does not occur at the dam site, may indirectly impact the species by reducing or eliminating water flow downstream). Because species can move, and site conditions can change, the species on this list are not guaranteed to be found on or near the project area. To fully determine any potential effects to species, additional site-specific and project-specific information is often required.

Section 7 of the Endangered Species Act requires Federal agencies to "request of the Secretary information whether any species which is listed or proposed to be listed may be present in the area of such proposed action" for any project that is conducted, permitted, funded, or licensed by any Federal agency. A letter from the local office and a species list which fulfills this requirement can only be obtained by requesting an official species list from either the Regulatory Review section in IPaC (see directions below) or from the local field office directly.

For project evaluations that require USFWS concurrence/review, please return to the IPaC website and request an official species list by doing the following:

1. Draw the project location and click CONTINUE.
2. Click DEFINE PROJECT.
3. Log in (if directed to do so).
4. Provide a name and description for your project.
5. Click REQUEST SPECIES LIST.

Listed species

and their critical habitats are managed by the [Ecological Services Program](#) of the U.S. Fish and Wildlife Service (USFWS) and the fisheries division of the National Oceanic and Atmospheric Administration (NOAA Fisheries).

Species and critical habitats under the sole responsibility of NOAA Fisheries are not shown on this list. Please contact [NOAA Fisheries](#) for [species under their jurisdiction](#).

1. Species listed under the [Endangered Species Act](#) are threatened or endangered; IPaC also shows species that are candidates, or proposed, for listing. See the [listing status page](#) for more information.
2. [NOAA Fisheries](#), also known as the National Marine Fisheries Service (NMFS), is an office of the National Oceanic and Atmospheric Administration within the Department of Commerce.

The following species are potentially affected by activities in this location:

Mammals

NAME	STATUS
Sonoran Pronghorn <i>Antilocapra americana sonoriensis</i> No critical habitat has been designated for this species. https://ecos.fws.gov/ecp/species/4750	EXPN

Birds

NAME	STATUS
California Least Tern <i>Sterna antillarum browni</i> No critical habitat has been designated for this species. https://ecos.fws.gov/ecp/species/8104	Endangered
Yellow-billed Cuckoo <i>Coccyzus americanus</i> There is proposed critical habitat for this species. Your location is outside the critical habitat. https://ecos.fws.gov/ecp/species/3911	Threatened
Yuma Clapper Rail <i>Rallus longirostris yumanensis</i> No critical habitat has been designated for this species. https://ecos.fws.gov/ecp/species/3505	Endangered

Critical habitats

Potential effects to critical habitat(s) in this location must be analyzed along with the endangered species themselves.

THERE ARE NO CRITICAL HABITATS AT THIS LOCATION

Migratory birds

Certain birds are protected under the Migratory Bird Treaty Act

¹ and the Bald and Golden Eagle Protection Act².

Any person or organization who plans or conducts activities that may result in impacts to migratory birds, eagles, and their habitats should follow appropriate regulations and consider implementing appropriate conservation measures, as described [below](#).

1. The [Migratory Birds Treaty Act](#) of 1918.
2. The [Bald and Golden Eagle Protection Act](#) of 1940.

Additional information can be found using the following links:

- Birds of Conservation Concern <http://www.fws.gov/birds/management/managed-species/birds-of-conservation-concern.php>
- Measures for avoiding and minimizing impacts to birds <http://www.fws.gov/birds/management/project-assessment-tools-and-guidance/conservation-measures.php>
- Nationwide conservation measures for birds

The birds listed below are birds of particular concern either because they occur on the [USFWS Birds of Conservation Concern](#) (BCC) list or warrant special attention in your project location. To learn more about the levels of concern for birds on your list and how this list is generated, see the [FAQ below](#). This is not a list of every bird you may find in this location, nor a guarantee that every bird on this list will be found in your project area. To see exact locations of where birders and the general public have sighted birds in and around your project area, visit the [E-bird data mapping tool](#) (Tip: enter your location, desired date range and a species on your list). For projects that occur off the Atlantic Coast, additional maps and models detailing the relative occurrence and abundance of bird species on your list are available. Links to additional information about Atlantic Coast birds, and other important information about your migratory bird list, including how to properly interpret and use your migratory bird report, can be found [below](#).

For guidance on when to schedule activities or implement avoidance and minimization measures to reduce impacts to migratory birds on your list, click on the PROBABILITY OF PRESENCE SUMMARY at the top of your list to see when these birds are most likely to be present and breeding in your project area.

NAME	BREEDING SEASON (IF A BREEDING SEASON IS INDICATED FOR A BIRD ON YOUR LIST, THE BIRD MAY BREED IN YOUR PROJECT AREA SOMETIME WITHIN THE TIMEFRAME SPECIFIED, WHICH IS A VERY LIBERAL ESTIMATE OF THE DATES INSIDE WHICH THE BIRD BREEDS ACROSS ITS ENTIRE RANGE. "BREEDS ELSEWHERE" INDICATES THAT THE BIRD DOES NOT LIKELY BREED IN YOUR PROJECT AREA.)
Bendire's Thrasher <i>Toxostoma bendirei</i> This is a Bird of Conservation Concern (BCC) throughout its range in the continental USA and Alaska. https://ecos.fws.gov/ecp/species/9435	Breeds Mar 15 to Jul 31
Burrowing Owl <i>Athene cucularia</i> This is a Bird of Conservation Concern (BCC) only in particular Bird Conservation Regions (BCRs) in the continental USA https://ecos.fws.gov/ecp/species/9737	Breeds Mar 15 to Aug 31

Costa's Hummingbird <i>Calypte costae</i> This is a Bird of Conservation Concern (BCC) only in particular Bird Conservation Regions (BCRs) in the continental USA https://ecos.fws.gov/ecp/species/9470	Breeds Jan 15 to Jun 10
Gila Woodpecker <i>Melanerpes uropygialis</i> This is a Bird of Conservation Concern (BCC) only in particular Bird Conservation Regions (BCRs) in the continental USA https://ecos.fws.gov/ecp/species/5960	Breeds Apr 1 to Aug 31
Gilded Flicker <i>Colaptes chrysoides</i> This is a Bird of Conservation Concern (BCC) throughout its range in the continental USA and Alaska. https://ecos.fws.gov/ecp/species/2960	Breeds May 1 to Aug 10
Gray Vireo <i>Vireo vicinior</i> This is a Bird of Conservation Concern (BCC) throughout its range in the continental USA and Alaska. https://ecos.fws.gov/ecp/species/8680	Breeds May 10 to Aug 20
Lawrence's Goldfinch <i>Carduelis lawrencei</i> This is a Bird of Conservation Concern (BCC) throughout its range in the continental USA and Alaska. https://ecos.fws.gov/ecp/species/9464	Breeds Mar 20 to Sep 20
Le Conte's Thrasher <i>Toxostoma lecontei</i> This is a Bird of Conservation Concern (BCC) throughout its range in the continental USA and Alaska. https://ecos.fws.gov/ecp/species/8969	Breeds Feb 15 to Jun 20

Tell me more about conservation measures I can implement to avoid or minimize impacts to migratory birds.

[Nationwide Conservation Measures](#) describes measures that can help avoid and minimize impacts to all birds at any location year round. Implementation of these measures is particularly important when birds are most likely to occur in the project area. When birds may be breeding in the area, identifying the locations of any active nests and avoiding their destruction is a very helpful impact minimization measure. To see when birds are most likely to occur and be breeding in your project area, view the Probability of Presence Summary, [Additional measures](#) and/or [permits](#) may be advisable depending on the type of activity you are conducting and the type of infrastructure or bird species present on your project site.

What does IPaC use to generate the migratory birds potentially occurring in my specified location?

The Migratory Bird Resource List is comprised of USFWS [Birds of Conservation Concern \(BCC\)](#) and other species that may warrant special attention in your project location.

The migratory bird list generated for your project is derived from data provided by the [Avian Knowledge Network \(AKN\)](#). The AKN data is based on a growing collection of [survey, banding, and citizen science datasets](#) and is queried and filtered to return a list of those birds reported as occurring in the 10km grid cell(s) which your project intersects, and that have been identified as warranting special attention because they are a BCC species in that area, an eagle ([Eagle Act](#) requirements may apply), or a species that has a particular vulnerability to offshore activities or development.

Again, the Migratory Bird Resource list includes only a subset of birds that may occur in your project area. It is not representative of all birds that may occur in your project area. To get a list of all birds potentially present in your project area, please visit the [E-bird Explore Data Tool](#).

What does IPaC use to generate the probability of presence graphs for the migratory birds potentially occurring in my specified location?

The probability of presence graphs associated with your migratory bird list are based on data provided by the [Avian Knowledge Network \(AKN\)](#). This data is derived from a growing collection of [survey, banding, and citizen science datasets](#).

Probability of presence data is continuously being updated as new and better information becomes available. To learn more about how the probability of presence graphs are produced and how to interpret them, go the Probability of Presence Summary and then click on the "Tell me about these graphs" link.

How do I know if a bird is breeding, wintering, migrating or present year-round in my project area?

To see what part of a particular bird's range your project area falls within (i.e. breeding, wintering, migrating or year-round), you may refer to the following resources: [The Cornell Lab of Ornithology All About Birds Bird Guide](#), or (if you are unsuccessful in locating the bird of interest there), the [Cornell Lab of Ornithology Neotropical Birds guide](#). If a bird on your migratory bird species list has a breeding season associated with it, if that bird does occur in your project area, there may be nests present at some point within the timeframe specified. If "Breeds elsewhere" is indicated, then the bird likely does not breed in your project area.

What are the levels of concern for migratory birds?

Migratory birds delivered through IPaC fall into the following distinct categories of concern:

1. "BCC Rangewide" birds are [Birds of Conservation Concern \(BCC\)](#) that are of concern throughout their range anywhere within the USA (including Hawaii, the Pacific Islands, Puerto Rico, and the Virgin Islands);
2. "BCC - BCR" birds are BCCs that are of concern only in particular Bird Conservation Regions (BCRs) in the continental USA; and
3. "Non-BCC - Vulnerable" birds are not BCC species in your project area, but appear on your list either because of the [Eagle Act](#) requirements (for eagles) or (for non-eagles) potential susceptibilities in offshore areas from certain types of development or activities (e.g. offshore energy development or longline fishing).

Although it is important to try to avoid and minimize impacts to all birds, efforts should be made, in particular, to avoid and minimize impacts to the birds on this list, especially eagles and BCC species of rangewide concern. For more information on conservation measures you can implement to help avoid and minimize migratory bird impacts and requirements for eagles, please see the FAQs for these topics.

Details about birds that are potentially affected by offshore projects

For additional details about the relative occurrence and abundance of both individual bird species and groups of bird species within your project area off the Atlantic Coast, please visit the [Northeast Ocean Data Portal](#). The Portal also offers data and information about other taxa besides birds that may be helpful to you in your project review. Alternately, you may download the bird model results files underlying the portal maps through the [NOAA NCCOS Integrative Statistical Modeling and Predictive Mapping of Marine Bird Distributions and Abundance on the Atlantic Outer Continental Shelf](#) project webpage.

Bird tracking data can also provide additional details about occurrence and habitat use throughout the year, including migration. Models relying on survey data may not include this information. For additional information on marine bird tracking data, see the [Diving Bird Study](#) and the [nanotag studies](#) or contact [Caleb Spiegel](#) or [Pam Loring](#).

What if I have eagles on my list?

If your project has the potential to disturb or kill eagles, you may need to [obtain a permit](#) to avoid violating the Eagle Act should such impacts occur.

Proper Interpretation and Use of Your Migratory Bird Report

The migratory bird list generated is not a list of all birds in your project area, only a subset of birds of priority concern. To learn more about how your list is generated, and see options for identifying what other birds may be in your project area, please see the FAQ "What does IPaC use to generate the migratory birds potentially occurring in my specified location". Please be aware this report provides the "probability of presence" of birds within the 10 km grid cell(s) that overlap your project; not your exact project footprint. On the graphs provided, please also look carefully at the survey effort (indicated by the black vertical bar) and for the existence of the "no data" indicator (a red horizontal bar). A high survey effort is the key component. If the survey effort is high, then the probability of presence score can be viewed as more dependable. In contrast, a low survey effort bar or no data bar means a lack of data and, therefore, a lack of certainty about presence of the species. This list is not perfect; it is simply a starting point for identifying what birds of concern have the potential to be in your project area, when they might be there, and if they might be breeding (which means nests might be present). The list helps you know what to look for to confirm presence, and helps guide you in knowing when to implement conservation measures to avoid or minimize potential impacts from your project activities, should presence be confirmed. To learn more about conservation measures, visit the FAQ "Tell me about conservation measures I can implement to avoid or minimize impacts to migratory birds" at the bottom of your migratory bird trust resources page.

Facilities

National Wildlife Refuge lands

Any activity proposed on lands managed by the [National Wildlife Refuge](#) system must undergo a 'Compatibility Determination' conducted by the Refuge. Please contact the individual Refuges to discuss any questions or concerns.

THERE ARE NO REFUGE LANDS AT THIS LOCATION.

Fish hatcheries

THERE ARE NO FISH HATCHERIES AT THIS LOCATION.

Wetlands in the National Wetlands Inventory

Impacts to [NWI wetlands](#) and other aquatic habitats may be subject to regulation under Section 404 of the Clean Water Act, or other State/Federal statutes.

For more information please contact the Regulatory Program of the local [U.S. Army Corps of Engineers District](#).

THERE ARE NO KNOWN WETLANDS AT THIS LOCATION.

Data limitations

The Service's objective of mapping wetlands and deepwater habitats is to produce reconnaissance level information on the location, type and size of these resources. The maps are prepared from the analysis of high altitude imagery. Wetlands are identified based on vegetation, visible hydrology and geography. A margin of error is inherent in the use of imagery; thus, detailed on-the-ground inspection of any particular site may result in revision of the wetland boundaries or classification established through image analysis.

The accuracy of image interpretation depends on the quality of the imagery, the experience of the image analysts, the amount and quality of the collateral data and the amount of ground truth verification work conducted. Metadata should be consulted to determine the date of the source imagery used and any mapping problems.

Wetlands or other mapped features may have changed since the date of the imagery or field work. There may be occasional differences in polygon boundaries or classifications between the information depicted on the map and the actual conditions on site.

Data exclusions

Certain wetland habitats are excluded from the National mapping program because of the limitations of aerial imagery as the primary data source used to detect wetlands. These habitats include seagrasses or submerged aquatic vegetation that are found in the intertidal and subtidal zones of estuaries and nearshore coastal waters. Some deepwater reef communities (coral or tubercid worm reefs) have also been excluded from the inventory. These habitats, because of their depth, go undetected by aerial imagery.

Data precautions

Federal, state, and local regulatory agencies with jurisdiction over wetlands may define and describe wetlands in a different manner than that used in this inventory. There is no attempt, in either the design or products of this inventory, to define the limits of proprietary jurisdiction of any Federal, state, or local government or to establish the geographical scope of the regulatory programs of government agencies. Persons intending to engage in activities involving modifications within or adjacent to wetland areas should seek the advice of appropriate federal, state, or local agencies concerning specified agency regulatory programs and proprietary jurisdictions that may affect such activities.

Arizona Environmental Online Review Tool Report



Arizona Game and Fish Department Mission

To conserve Arizona's diverse wildlife resources and manage for safe, compatible outdoor recreation opportunities for current and future generations.

Project Name:

SMF 32nd Street TI

User Project Number:

NH-202-D(ADY); H5764 01D (H8827 01C)

Project Description:

Proposed addition of traffic interchange at 32nd Street for the South Mountain Freeway project.

Project Type:

Transportation & Infrastructure, Road construction (including staging areas), Interchanges (ramps)

Contact Person:

Kurt Watzek

Organization:

HDR

On Behalf Of:

ADOT

Project ID:

HGIS-07993

Please review the entire report for project type and/or species recommendations for the location information entered. Please retain a copy for future reference.

Disclaimer:

1. This Environmental Review is based on the project study area that was entered. The report must be updated if the project study area, location, or the type of project changes.
2. This is a preliminary environmental screening tool. It is not a substitute for the potential knowledge gained by having a biologist conduct a field survey of the project area. This review is also not intended to replace environmental consultation (including federal consultation under the Endangered Species Act), land use permitting, or the Departments review of site-specific projects.
3. The Departments Heritage Data Management System (HDMS) data is not intended to include potential distribution of special status species. Arizona is large and diverse with plants, animals, and environmental conditions that are ever changing. Consequently, many areas may contain species that biologists do not know about or species previously noted in a particular area may no longer occur there. HDMS data contains information about species occurrences that have actually been reported to the Department. Not all of Arizona has been surveyed for special status species, and surveys that have been conducted have varied greatly in scope and intensity. Such surveys may reveal previously undocumented population of species of special concern.
4. HabiMap Arizona data, specifically Species of Greatest Conservation Need (SGCN) under our State Wildlife Action Plan (SWAP) and Species of Economic and Recreational Importance (SERI), represent potential species distribution models for the State of Arizona which are subject to ongoing change, modification and refinement. The status of a wildlife resource can change quickly, and the availability of new data will necessitate a refined assessment.

Locations Accuracy Disclaimer:

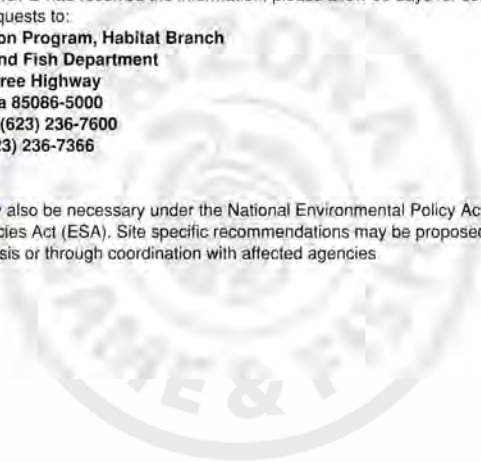
Project locations are assumed to be both precise and accurate for the purposes of environmental review. The creator/owner of the Project Review Report is solely responsible for the project location and thus the correctness of the Project Review Report content.

Recommendations Disclaimer:

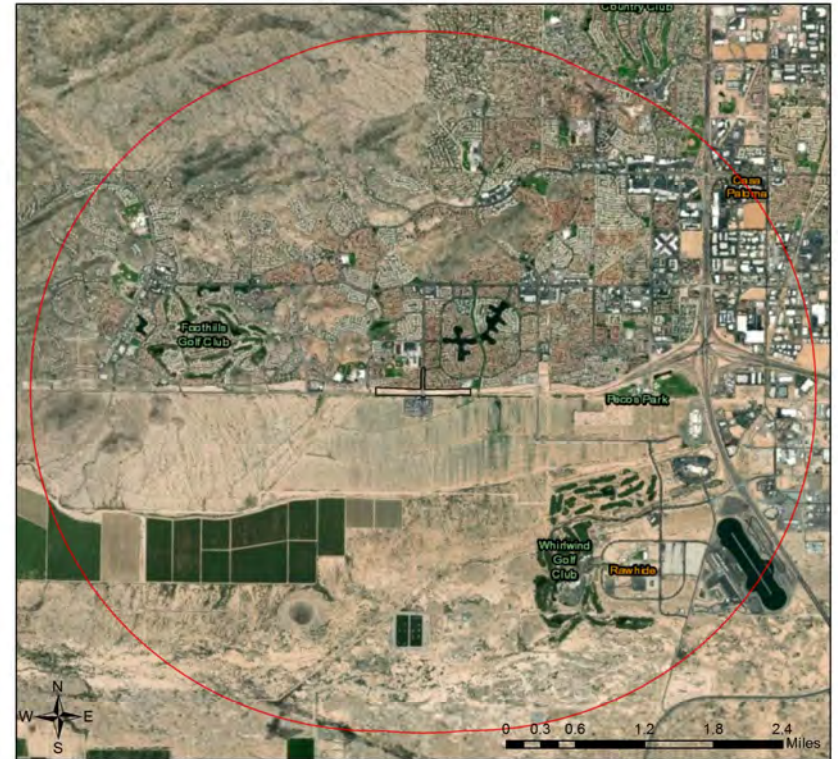
1. The Department is interested in the conservation of all fish and wildlife resources, including those species listed in this report and those that may have not been documented within the project vicinity as well as other game and nongame wildlife.
2. Recommendations have been made by the Department, under authority of Arizona Revised Statutes Title 5 (Amusements and Sports), 17 (Game and Fish), and 28 (Transportation).
3. Potential impacts to fish and wildlife resources may be minimized or avoided by the recommendations generated from information submitted for your proposed project. These recommendations are preliminary in scope, designed to provide early considerations on all species of wildlife.
4. Making this information directly available does not substitute for the Department's review of project proposals, and should not decrease our opportunity to review and evaluate additional project information and/or new project proposals.
5. Further coordination with the Department requires the submittal of this Environmental Review Report with a cover letter and project plans or documentation that includes project narrative, acreage to be impacted, how construction or project activity(s) are to be accomplished, and project locality information (including site map). Once AGFD had received the information, please allow 30 days for completion of project reviews. Send requests to:

Project Evaluation Program, Habitat Branch
Arizona Game and Fish Department
5000 West Carefree Highway
Phoenix, Arizona 85086-5000
Phone Number: (623) 236-7600
Fax Number: (623) 236-7366
Or
PEP@azgfd.gov

6. Coordination may also be necessary under the National Environmental Policy Act (NEPA) and/or Endangered Species Act (ESA). Site specific recommendations may be proposed during further NEPA/ESA analysis or through coordination with affected agencies



SMF 32nd Street T1
Aerial Image Basemap With Locator Map



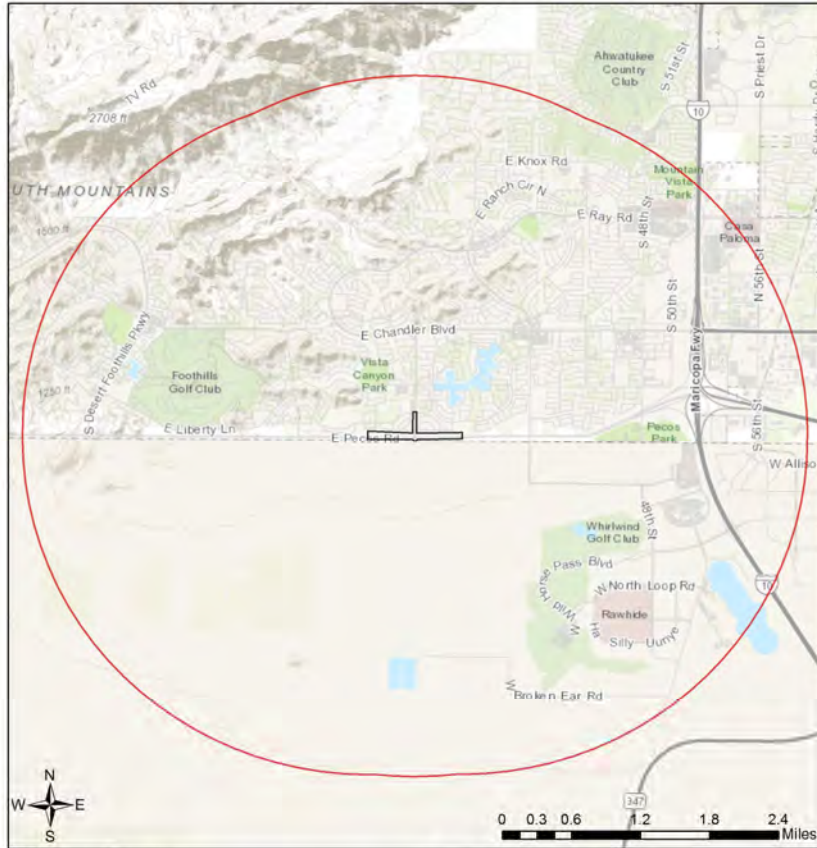
- Project Boundary
- Buffered Project Boundary

Project Size (acres): 36.22
Lat/Long (DD): 33.2916 / -112.0148
County(s): Maricopa
AGFD Region(s): Mesa
Township/Range(s): T1S, R3E
USGS Quad(s): LONE BUTTE

Service Layer Credits: Sources: Esri, HERE, Garmin, Intermap, increment P Corp., GEBCO, USGS, FAO, NPS, NRCAN, GeoBase, IGN, Kadaster NL, Ordnance Survey, Esri Japan, METI, Esri China (Hong Kong), swisstopo, ©



SMF 32nd Street T1
 Web Map As Submitted By User

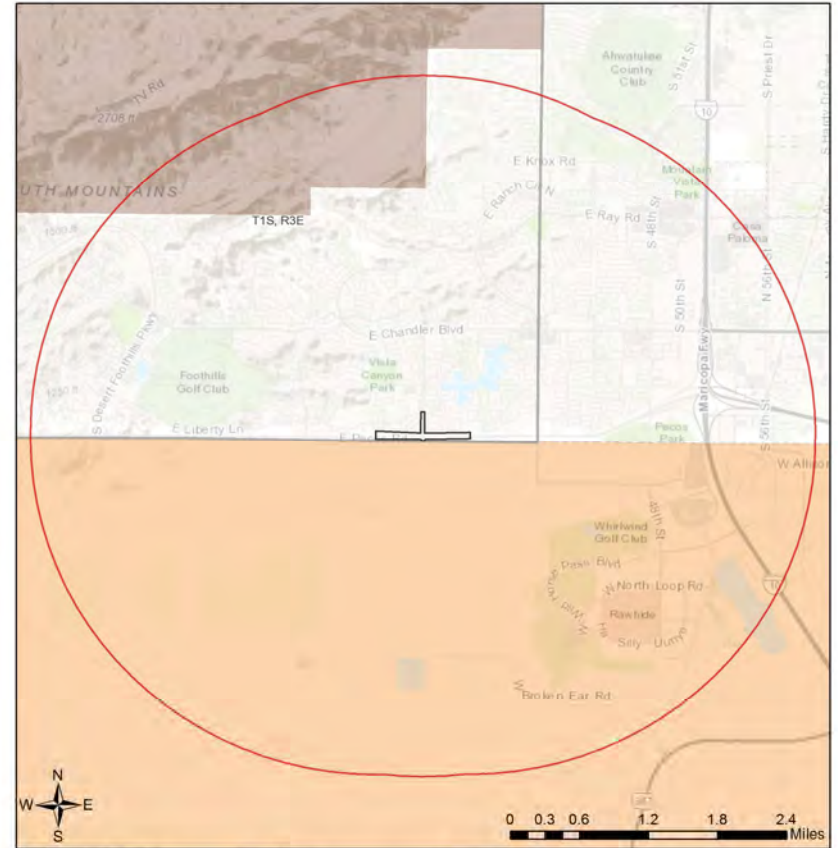


- Project Boundary
- Buffered Project Boundary

Project Size (acres): 36.22
 Lat/Long (DD): 33.2916 / -112.0148
 County(s): Maricopa
 AGFD Region(s): Mesa
 Township/Range(s): T1S, R3E
 USGS Quad(s): LONE BUTTE

Sources: Esri, HERE, Garmin, Intermap, increment P Corp., GEBCO, USGS, FAO, NPS, NRCAN, Geobase, IGN, Kadaster NL, Ordnance Survey, Esri Japan, METI, Esri China (Hong Kong), Swisstopo, © OpenStreetMap contributors, and the GIS User Community

SMF 32nd Street T1
 Topo Basemap With Township/Ranges and Land Ownership



- Project Boundary
- Buffered Project Boundary
- Township/Ranges

- Land Ownership**
- AZ Game and Fish Dept.
 - BLM
 - BOR
 - Indian Res.
 - Military
 - Mixed/Other
 - National Park/Mon.
 - Private
 - State Trust
 - US Forest Service
 - Wildlife Area/Refuge

Project Size (acres): 36.22
 Lat/Long (DD): 33.2916 / -112.0148
 County(s): Maricopa
 AGFD Region(s): Mesa
 Township/Range(s): T1S, R3E
 USGS Quad(s): LONE BUTTE

Sources: Esri, HERE, Garmin, Intermap, increment P Corp., GEBCO, USGS, FAO, NPS, NRCAN, Geobase, IGN, Kadaster NL, Ordnance Survey, Esri Japan, METI, Esri China (Hong Kong), Swisstopo, © OpenStreetMap contributors, and the GIS User Community

Special Status Species and Special Areas Documented within 3 Miles of Project Vicinity

Scientific Name	Common Name	FWS	USFS	BLM	NPL	SGCN
Gila River Indian Reservation	Gila River Indian Reservation					
Gopherus morafkai	Sonoran Desert Tortoise	CCA	S	S		1A

Note: Status code definitions can be found at <https://www.azgfd.com/wildlife/planning/wildlife/guidelines/statusdefinitions/>

Species of Greatest Conservation Need

Predicted within 3 Miles of Project Vicinity based on Predicted Range Models

Scientific Name	Common Name	FWS	USFS	BLM	NPL	SGCN
Aix sponsa	Wood Duck					1B
Ammospermophilus harrisi	Harris' Antelope Squirrel					1B
Aquila chrysaetos	Golden Eagle	BGA		S		1B
Athene cunicularia hypugaea	Western Burrowing Owl	SC	S	S		1B
Botaurus lentiginosus	American Bittern					1B
Buteo regalis	Ferruginous Hawk	SC		S		1B
Calypte costae	Costa's Hummingbird					1C
Chilomeniscus stramineus	Variable Sandsnake					1B
Chionactis occipitalis klauberi	Tucson Shovel-nosed Snake	SC				1A
Cistothorus palustris	Marsh Wren					1C
Colaptes chrysoides	Gilded Flicker			S		1B
Coluber bilineatus	Sonoran Whipsnake				S	1B
Corynorhinus townsendii pallescens	Pale Townsend's Big-eared Bat	SC	S	S		1B
Crotalus tigris	Tiger Rattlesnake					1B
Dipodomys spectabilis	Banner-tailed Kangaroo Rat			S		1B
Empidonax wrightii	Gray Flycatcher					1C
Euderma maculatum	Spotted Bat	SC	S	S		1B
Eumops perotis californicus	Greater Western Bonneted Bat	SC		S		1B
Falco peregrinus anatum	American Peregrine Falcon	SC	S	S		1A
Gopherus morafkai	Sonoran Desert Tortoise	CCA	S	S		1A
Haliaeetus leucocephalus	Bald Eagle	SC, BGA	S	S		1A
Heloderma suspectum	Gila Monster					1A
Inciilius alvarius	Sonoran Desert Toad					1B
Kinosternon sonoriense sonoriense	Desert Mud Turtle			S		1B
Lasiurus blossevillii	Western Red Bat		S			1B
Lasiurus xanthinus	Western Yellow Bat		S			1B
Leptonycteris yerbabuenae	Lesser Long-nosed Bat	SC				1A
Lepus alleni	Antelope Jackrabbit					1B
Lithobates yavapaiensis	Lowland Leopard Frog	SC	S	S		1A
Macrotus californicus	California Leaf-nosed Bat	SC		S		1B

**Species of Greatest Conservation Need
Predicted within 3 Miles of Project Vicinity based on Predicted Range Models**

Scientific Name	Common Name	FWS	USFS	BLM	NPL	SGCN
Melanerpes uropygialis	Gila Woodpecker					1B
Melospiza lincolni	Lincoln's Sparrow					1B
Melospiza aberti	Abert's Towhee		S			1B
Micrathene whitneyi	Elf Owl					1C
Micruroides euryxanthus	Sonoran Coralsnake					1B
Myiarchus tyrannulus	Brown-crested Flycatcher					1C
Myotis occultus	Arizona Myotis	SC		S		1B
Myotis velifer	Cave Myotis	SC		S		1B
Myotis yumanensis	Yuma Myotis	SC				1B
Nyctinomops femorosaccus	Pocketed Free-tailed Bat					1B
Oreoscoptes montanus	Sage Thrasher					1C
Oreothlypis luciae	Lucy's Warbler					1C
Panthera onca	Jaguar	LE				1A
Passerculus sandwichensis	Savannah Sparrow					1B
Phrynosoma goodei	Goode's Horned Lizard					1B
Phrynosoma solare	Regal Horned Lizard					1B
Phyllorhynchus browni	Saddled Leaf-nosed Snake					1B
Rallus obsoletus yumanensis	Yuma Ridgway's Rail	LE				1A
Setophaga petechia	Yellow Warbler					1B
Sphyrapicus nuchalis	Red-naped Sapsucker					1C
Spizella breweri	Brewer's Sparrow					1C
Tadarida brasiliensis	Brazilian Free-tailed Bat					1B
Toxostoma lecontei	LeConte's Thrasher			S		1B
Troglodytes pacificus	Pacific Wren					1B
Vireo bellii arizonae	Arizona Bell's Vireo					1B
Vireo vicinior	Gray Vireo		S			1C
Vulpes macrotis	Kit Fox	No Status				1B

Species of Economic and Recreation Importance Predicted within 3 Miles of Project Vicinity

Scientific Name	Common Name	FWS	USFS	BLM	NPL	SGCN
Callipepla gambelii	Gambel's Quail					
Zenaida asiatica	White-winged Dove					
Zenaida macroura	Mourning Dove					

Project Type: Transportation & Infrastructure, Road construction (including staging areas), Interchanges (ramps)

Project Type Recommendations:

Bridge Maintenance/Construction

Identify whether wildlife species use the structure for roosting or nesting during anticipated maintenance/construction period. Plan the timing of maintenance/construction to minimize impacts to wildlife species. In addition to the species list generated by the Arizona's On-line Environmental Review Tool, the Department recommends that surveys be conducted at the bridge and in the vicinity of the bridge to identify additional or currently undocumented bat, bird, or aquatic species in the project area. To minimize impacts to birds and bats, as well as aquatic species, consider conducting maintenance and construction activities outside the breeding/maternity season (breeding seasons for birds and bats usually occur spring - summer). Examining the crevices for the presence of bats prior to pouring new paving materials or that the top of those crevices be sealed to prevent material from dripping or falling through the cracks and potentially onto bats. If bats are present, maintenance and construction (including paving and milling) activities should be conducted during nighttime hours, if possible, when the fewest number of bats will be roosting. Minimize impacts to the vegetation community. Unavoidable impacts to vegetation should be mitigated on-site whenever possible. A revegetation plan should be developed to replace impacted communities.

Consider design structures and construction plans that minimize impacts to channel geometry (i.e., width/depth ratio, sinuosity, allow overflow channels), to avoid alteration of hydrological function. Consider incorporating roosting sites for bats into bridge designs. During construction, erosion control structures and drainage features should be used to prevent introduction of sediment laden runoff into the waterway. Minimize instream construction activity. If culverts are planned, use wildlife friendly designs to mitigate impacts to wildlife and fish movement. Guidelines for bridge designs to facilitate wildlife passage can be found on our Wildlife Friendly Guidelines web page under the Wildlife Planning button, at <https://www.azgfd.com/wildlife/planning/wildlifeguidelines/>.

Fence recommendations will be dependant upon the goals of the fence project and the wildlife species expected to be impacted by the project. General guidelines for ensuring wildlife-friendly fences include: barbless wire on the top and bottom with the maximum fence height 42", minimum height for bottom 16". Modifications to this design may be considered for fencing anticipated to be routinely encountered by elk, bighorn sheep or pronghorn (e.g., Pronghorn fencing would require 18" minimum height on the bottom). Please refer to the Department's Fencing Guidelines located on Wildlife Friendly Guidelines page, which is part of the Wildlife Planning button at <https://www.azgfd.com/wildlife/planning/wildlifeguidelines/>.

During the planning stages of your project, please consider the local or regional needs of wildlife in regards to movement, connectivity, and access to habitat needs. Loss of this permeability prevents wildlife from accessing resources, finding mates, reduces gene flow, prevents wildlife from re-colonizing areas where local extirpations may have occurred, and ultimately prevents wildlife from contributing to ecosystem functions, such as pollination, seed dispersal, control of prey numbers, and resistance to invasive species. In many cases, streams and washes provide natural movement corridors for wildlife and should be maintained in their natural state. Uplands also support a large diversity of species, and should be contained within important wildlife movement corridors. In addition, maintaining biodiversity and ecosystem functions can be facilitated through improving designs of structures, fences, roadways, and culverts to promote passage for a variety of wildlife. Guidelines for many of these can be found at: <https://www.azgfd.com/wildlife/planning/wildlifeguidelines/>.

Consider impacts of outdoor lighting on wildlife and develop measures or alternatives that can be taken to increase human safety while minimizing potential impacts to wildlife. Conduct wildlife surveys to determine species within project area, and evaluate proposed activities based on species biology and natural history to determine if artificial lighting may disrupt behavior patterns or habitat use. Use only the minimum amount of light needed for safety. Narrow spectrum bulbs should be used as often as possible to lower the range of species affected by lighting. All lighting should be shielded, canted, or cut to ensure that light reaches only areas needing illumination.

Minimize potential introduction or spread of exotic invasive species. Invasive species can be plants, animals (exotic snails), and other organisms (e.g., microbes), which may cause alteration to ecological functions or compete with or prey upon native species and can cause social impacts (e.g., livestock forage reduction, increase wildfire risk). The terms noxious weed or invasive plants are often used interchangeably. Precautions should be taken to wash all equipment utilized in the project activities before leaving the site. Arizona has noxious weed regulations (Arizona Revised Statutes, Rules R3-4-244 and R3-4-245). See Arizona Department of Agriculture website for restricted plants, <https://agriculture.az.gov/>. Additionally, the U.S. Department of Agriculture has information regarding pest and invasive plant control methods including: pesticide, herbicide, biological control agents, and mechanical control, <http://www.usda.gov/wps/portal/usdahome>. The Department regulates the importation, purchasing, and transportation of wildlife and fish (Restricted Live Wildlife), please refer to the hunting regulations for further information <https://www.azgfd.com/hunting/regulations>.

Minimization and mitigation of impacts to wildlife and fish species due to changes in water quality, quantity, chemistry, temperature, and alteration to flow regimes (timing, magnitude, duration, and frequency of floods) should be evaluated. Minimize impacts to springs, in-stream flow, and consider irrigation improvements to decrease water use. If dredging is a project component, consider timing of the project in order to minimize impacts to spawning fish and other aquatic species (include spawning seasons), and to reduce spread of exotic invasive species. We recommend early direct coordination with Project Evaluation Program for projects that could impact water resources, wetlands, streams, springs, and/or riparian habitats.

The Department recommends that wildlife surveys are conducted to determine if noise-sensitive species occur within the project area. Avoidance or minimization measures could include conducting project activities outside of breeding seasons.

Based on the project type entered, coordination with State Historic Preservation Office may be required (<http://azstateparks.com/SHPO/index.html>).

Vegetation restoration projects (including treatments of invasive or exotic species) should have a completed site-evaluation plan (identifying environmental conditions necessary to re-establish native vegetation), a revegetation plan (species, density, method of establishment), a short and long-term monitoring plan, including adaptive management guidelines to address needs for replacement vegetation.

The Department requests further coordination to provide project/species specific recommendations. please contact Project Evaluation Program directly, PEP@azgfd.gov

Project Location and/or Species Recommendations:

HDMS records indicate that one or more listed, proposed, or candidate species or Critical Habitat (Designated or Proposed) have been documented in the vicinity of your project. The Endangered Species Act (ESA) gives the US Fish and Wildlife Service (USFWS) regulatory authority over all federally listed species. Please contact USFWS Ecological Services Offices at <http://www.fws.gov/southwest/es/arizona/> or:

Phoenix Main Office

2321 W. Royal Palm Rd, Suite 103
Phoenix, AZ 85021
Phone: 602-242-0210
Fax: 602-242-2513

Tucson Sub-Office

201 N. Bonita Suite 141
Tucson, AZ 85745
Phone: 520-670-6144
Fax: 520-670-6155

Flagstaff Sub-Office

SW Forest Science Complex
2500 S. Pine Knoll Dr.
Flagstaff, AZ 86001
Phone: 928-556-2157
Fax: 928-556-2121

HDMS records indicate that Sonoran Desert Tortoise have been documented within the vicinity of your project area. Please review the Tortoise Handling Guidelines found at: <https://www.azgfd.com/wildlife/nongamemangement/tortoise/>

Tribal Lands are within the vicinity of your project area and may require further coordination. Please contact:
Gila River Indian Community
PO Box 97
Sacaton, AZ 85247
(520) 562-6000
(520) 562-6010 (fax)

