



TIER 1 ENVIRONMENTAL IMPACT STATEMENT

ABOUT THE SONORAN CORRIDOR

In partnership with the Federal Highway Administration (FHWA), the Arizona Department of Transportation (ADOT) is conducting a three-year environmental study in compliance with the National Environmental Policy Act (NEPA). The study will evaluate the feasibility of the Sonoran Corridor, a proposed new highway that would connect Interstate 10 (I-10) and Interstate 19 (I-19) south of the Tucson International Airport.

THE STUDY PROCESS

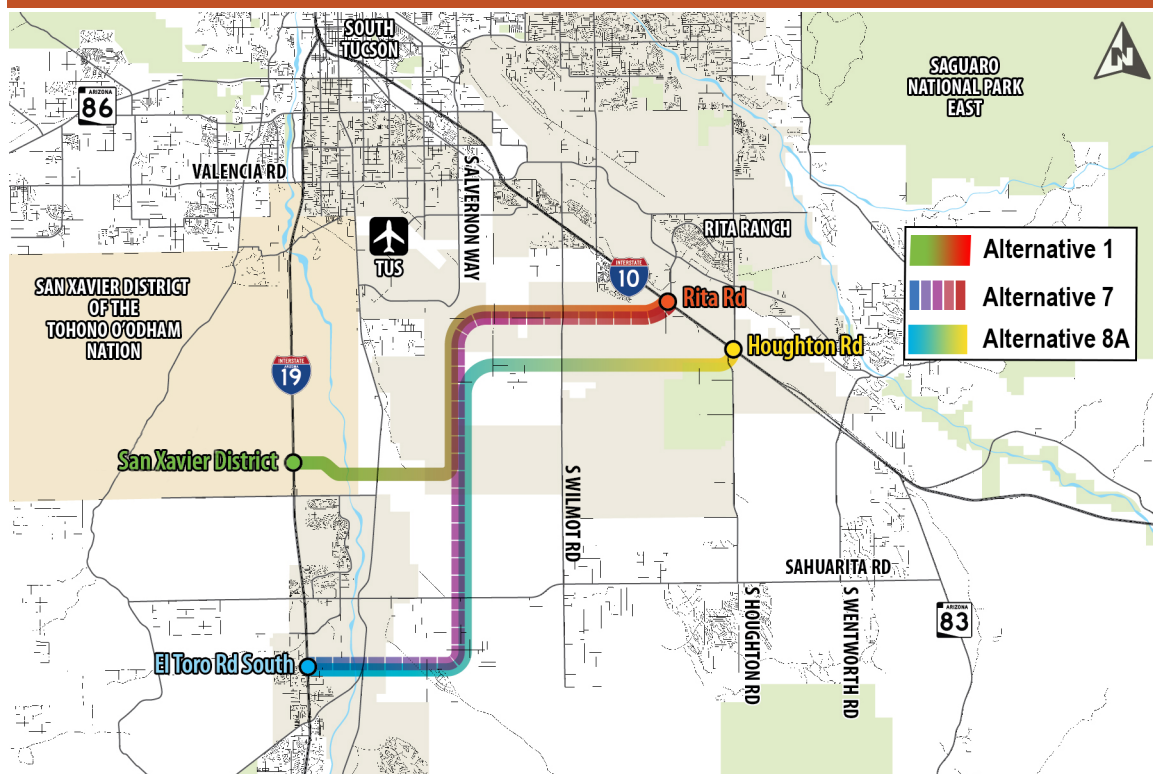
In May 2017, ADOT and FHWA initiated the study for the Sonoran Corridor. The Tier 1 Environmental Impact Statement (EIS) is being prepared to evaluate a Reasonable Range of Corridor Alternatives, which includes a “no-build” option, to identify a preferred alternative. A draft Corridor Selection Report (CSR) that documents the alternatives analysis and identifies a range of reasonable corridor alternatives recommended for further study in the Tier 1 EIS has been prepared (see map below). Corridor alternatives considered for this study were screened based on several categories noted in the list to the right.

CORRIDOR SCREENING CATEGORIES

Potential corridors identified in this study are being evaluated based on their ability to address:

- Anticipated growth
- Mobility
- System linkages
- Economic development
- Environment
- Implementation Feasibility

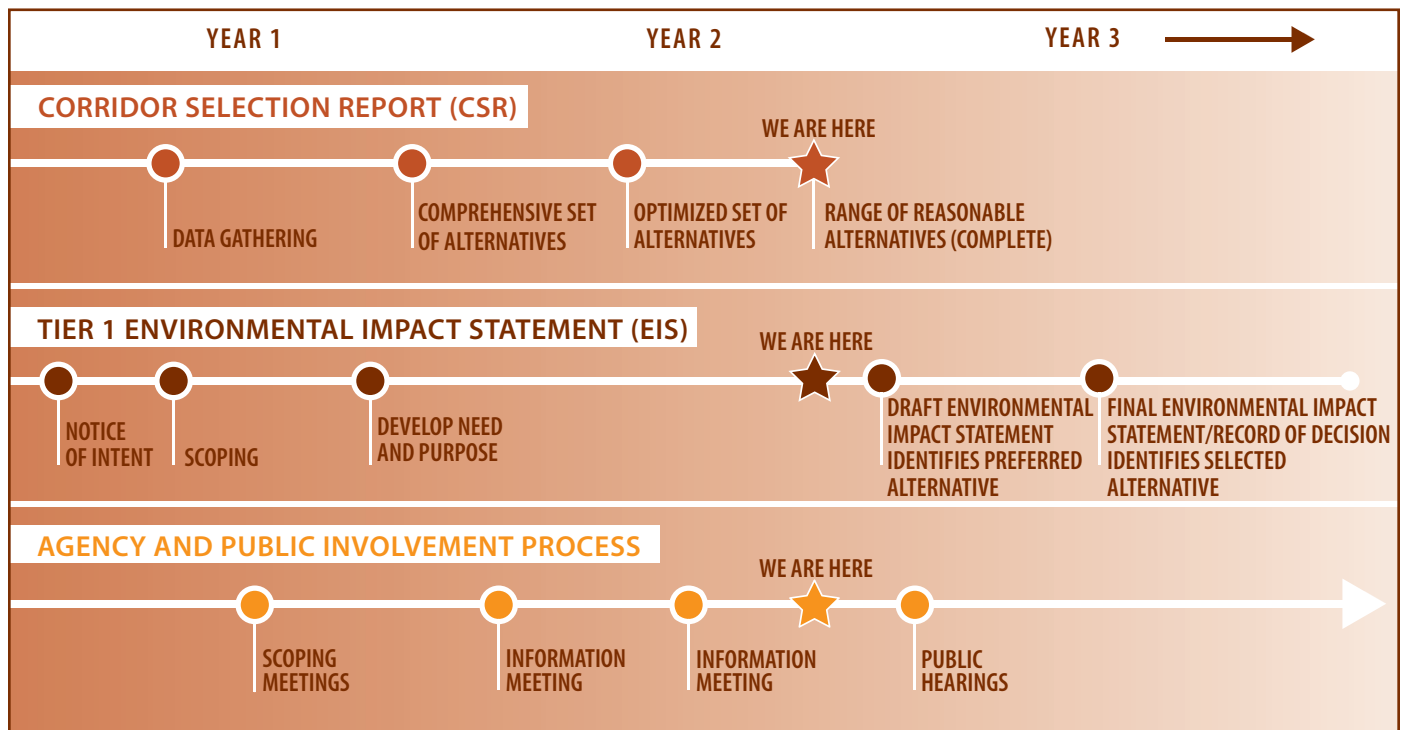
RANGE OF REASONABLE ALTERNATIVES MAP



ABOUT THE TIER 1 ENVIRONMENTAL IMPACT STATEMENT (EIS)

A Tier 1 EIS utilizes the Reasonable Range of Alternatives that was developed and analyzed in the Corridor Selection Report and further studies the potential environmental impacts of these corridors, including the “no-build” option. Through this environmental study, the team will assess a wide range of environmental factors through a robust process. It will disclose the details of the methodology of analysis, and demonstrate compliance with applicable environmental laws. This data will help assess the various environmental impacts of each potential corridor presented in the Reasonable Range, in the effort to make an informed decision toward a “preferred” alternative for a 2000-foot-wide corridor to be analyzed in a future study. This information will be presented to the public in Public Hearings to be held in early 2020.

SONORAN CORRIDOR STUDY PROCESS AND SCHEDULE



HOW YOU CAN GET INVOLVED

ADOT and the FHWA will continue to involve stakeholder agencies, organizations and members of the community throughout the study process. Opportunities to comment will be available through meetings and other forms of public outreach.

ADOT held public scoping meetings in Tucson and Sahuarita in June 2017 to gather input that helped establish the “Need and Purpose” for the study and inform the study team in advance of the corridor selection process. Public information meetings were held in Tucson in September 2018 to get public and agency input on initial screening of alternatives and in March 2019 to establish a range of reasonable alternatives to include in the Tier 1 Environmental Impact Statement.

A preferred corridor alternative will be presented at public hearings scheduled to be held in early 2020 and to receive input from the public and stakeholders on the Draft Tier 1 Environmental Impact Statement. Public input on the document will be incorporated into a Final EIS and ultimate Record of Decision from the Federal Highway Administration that will bring the study to conclusion.



azdot.gov/sonorancorridor



Toll-free bilingual information line:
1.855.712.8530



sonorancorridor@azdot.gov



Sonoran Corridor Tier 1 EIS Study Team
c/o Joanna Bradley
1221 S. Second Ave., Mail Drop T100
Tucson, AZ 85713