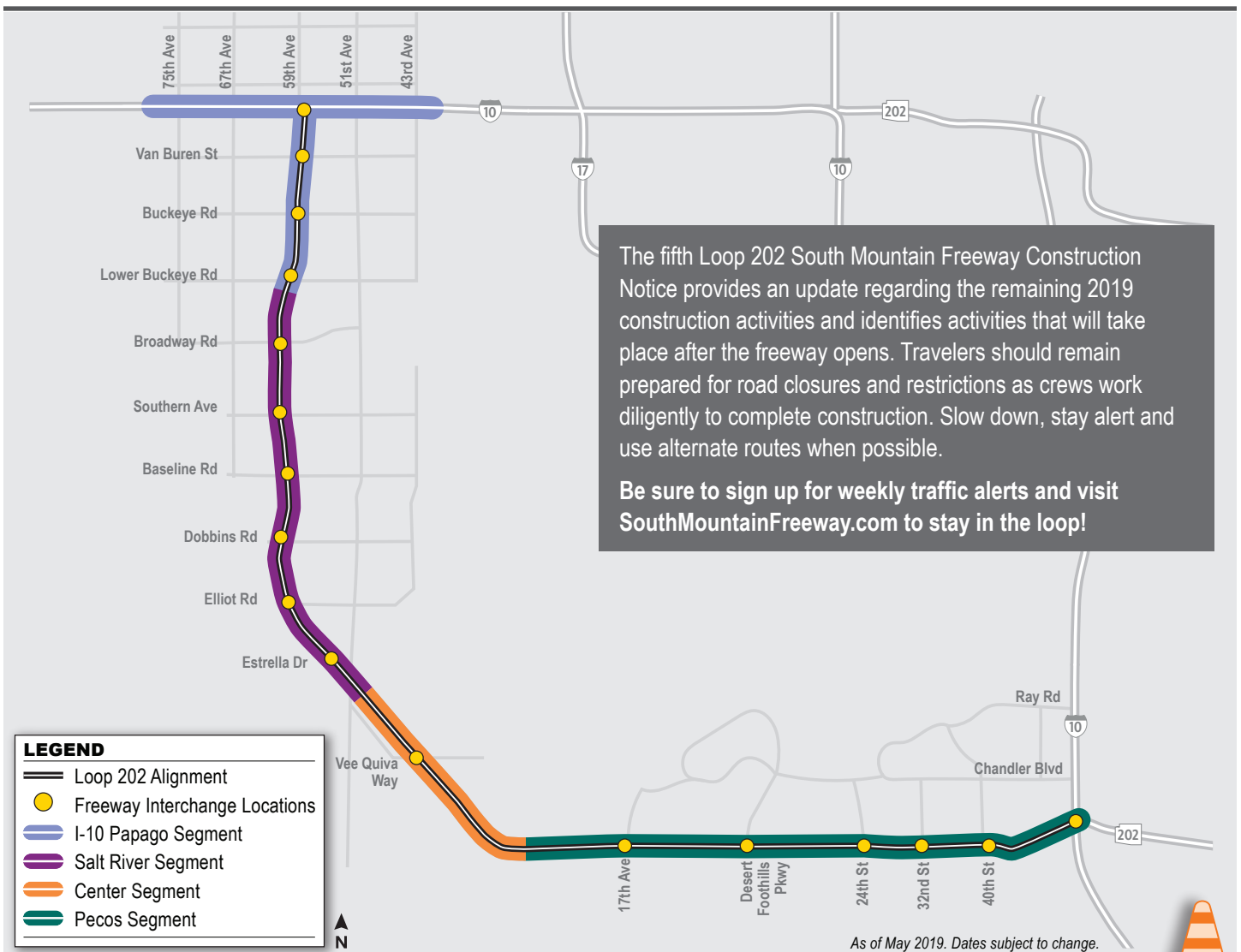


NOTICE

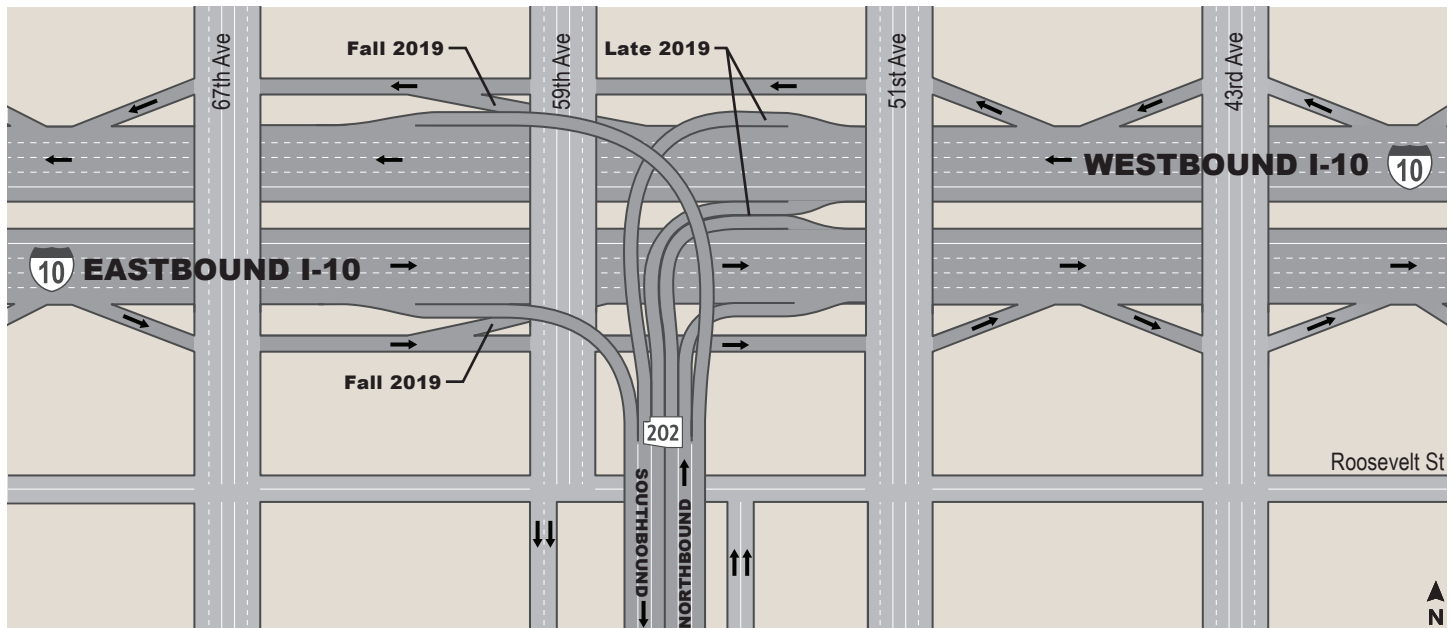


LOOP 202 SOUTH MOUNTAIN FREEWAY SCHEDULED TO OPEN LATE 2019



I-10 PAPAGO SEGMENT

I-10 Papago Freeway/Loop 202 South Mountain Freeway Interchange



2019 Traffic Restrictions and Closures

The following restrictions and closures are anticipated in the I-10 Papago segment through late 2019. Dates and times of restrictions and closures will be published in the weekly traffic alerts, and construction alerts will be distributed for extended or weekend closures.

- Periodic closures and restrictions of eastbound and westbound I-10 Papago freeway to complete the I-10 mainline and interchange ramps
- Traffic shifts for street improvements
 - Roosevelt and Van Buren streets between 59th and 61st avenues
 - Buckeye and Lower Buckeye roads between 59th and 63rd avenues
 - 59th Avenue between Roosevelt Street and Lower Buckeye Road
- Nightly and weekend closures of cross-streets, as needed

Dates subject to change.



BEFORE: Looking north toward I-10 Papago Freeway interchange at 59th Avenue September 2016



AFTER: Looking northwest toward I-10 Papago Freeway interchange at 59th Avenue April 2019



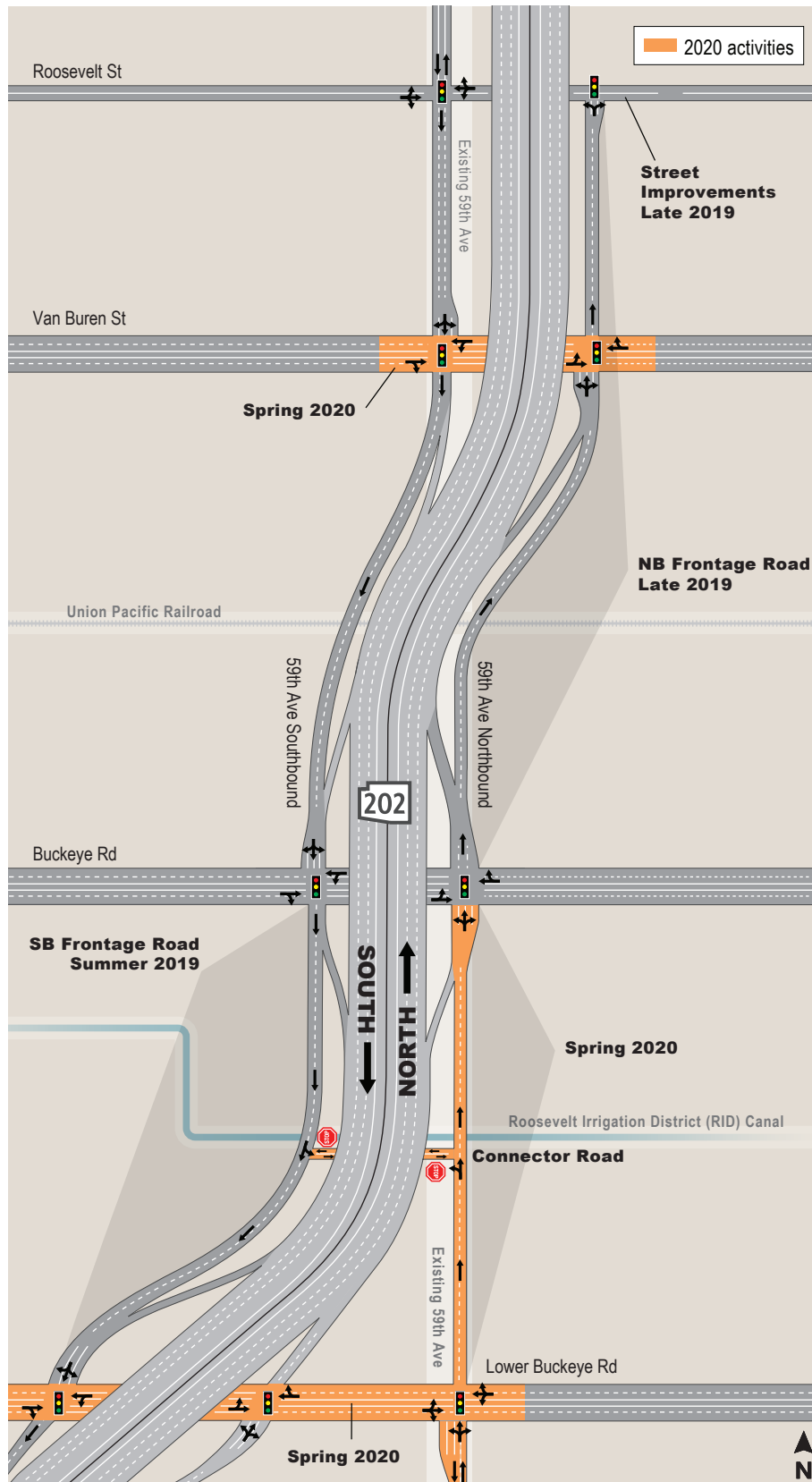
BEFORE: 59th Avenue looking north toward Lower Buckeye Road September 2016



AFTER: Looking north toward Lower Buckeye Road at Roosevelt Irrigation District (RID) canal April 2019

2020 Construction Activities

Northbound 59th Avenue Frontage Road



2020 Traffic Restrictions and Closures

The following restrictions and closures are anticipated in the I-10 Papago segment in 2020. Dates and times of restrictions and closures will be published in the weekly traffic alerts, and construction alerts will be distributed for extended or weekend closures.

- Traffic shifts for street improvements
 - Van Buren Street between 59th and 61st avenues
 - Buckeye and Lower Buckeye roads between 59th and 63rd avenues
 - 59th Avenue between Roosevelt Street and Lower Buckeye Road
- Nightly and weekend closures of cross-streets, as needed
- Weekend closures for rubberized asphalt paving, as needed

Dates subject to change.

Connector Road

The connector road south of the Roosevelt Irrigation District (RID) canal consists of one lane in each direction, allowing traffic to cross the freeway between major crossroads. The connector road provides access to the 59th Avenue frontage roads and will allow traffic to merge onto the Loop 202 South Mountain Freeway.

Landscaping

Landscape improvements east of the 59th Avenue corridor between Buckeye and Lower Buckeye roads are underway.

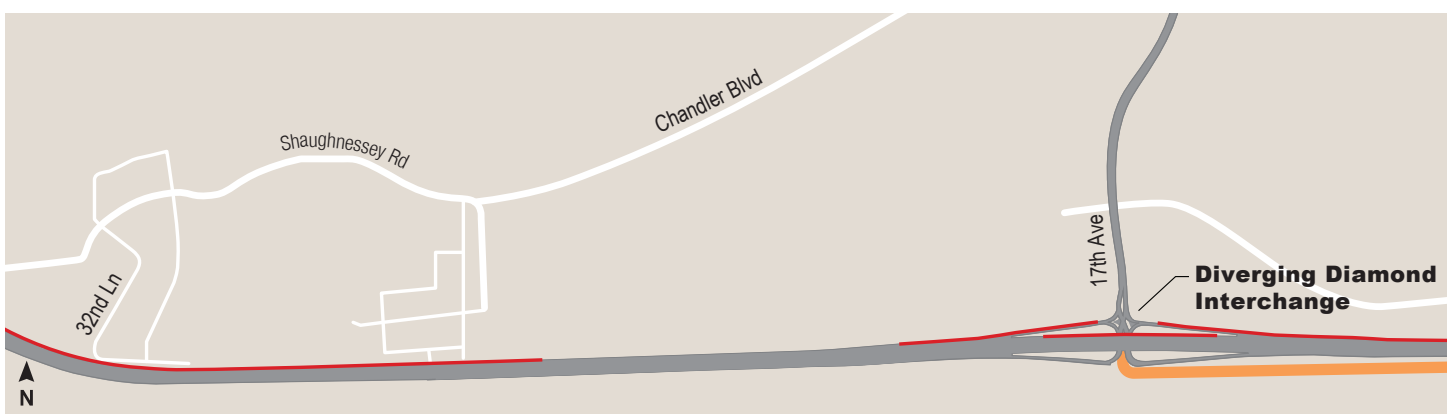
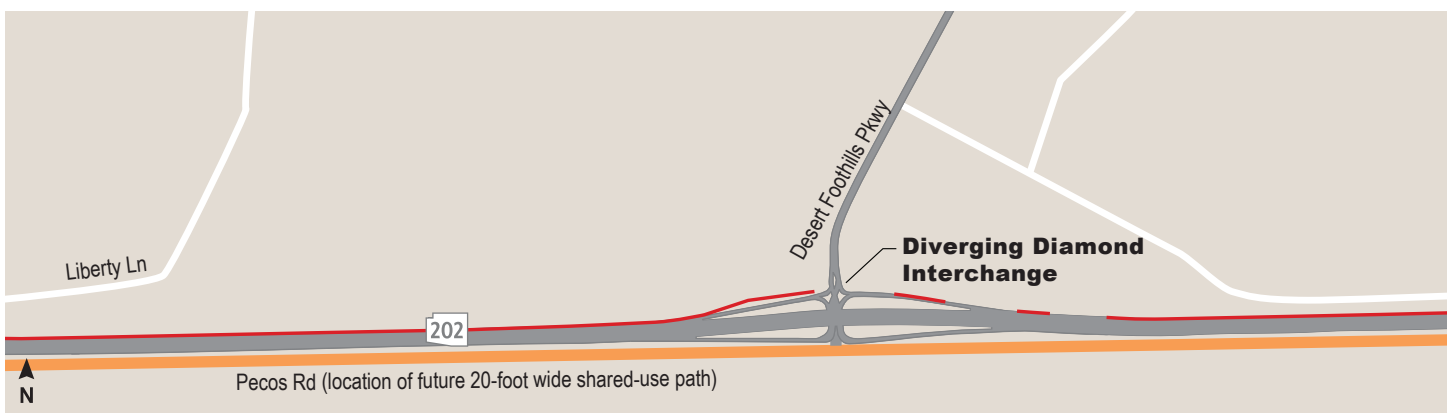
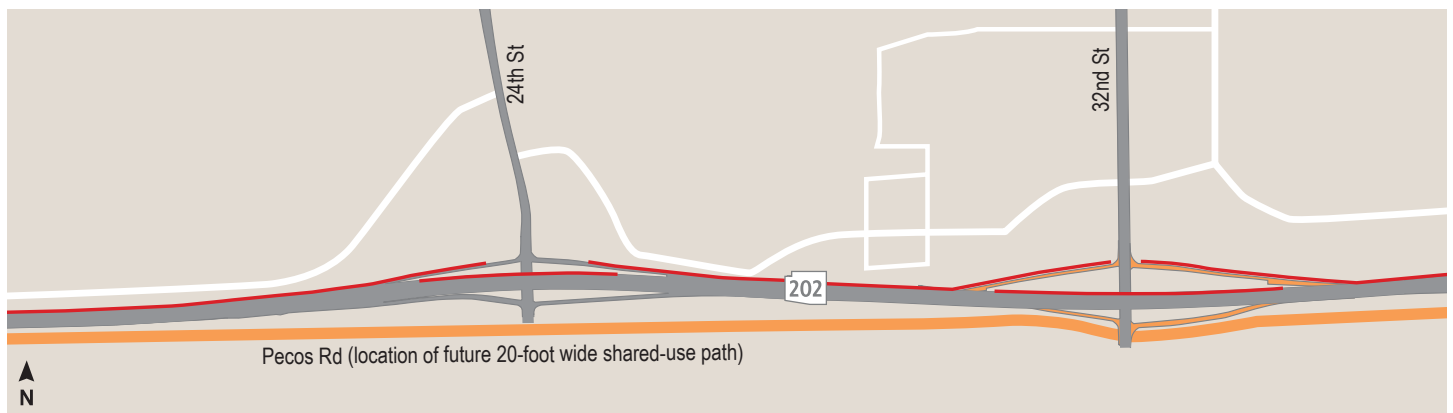
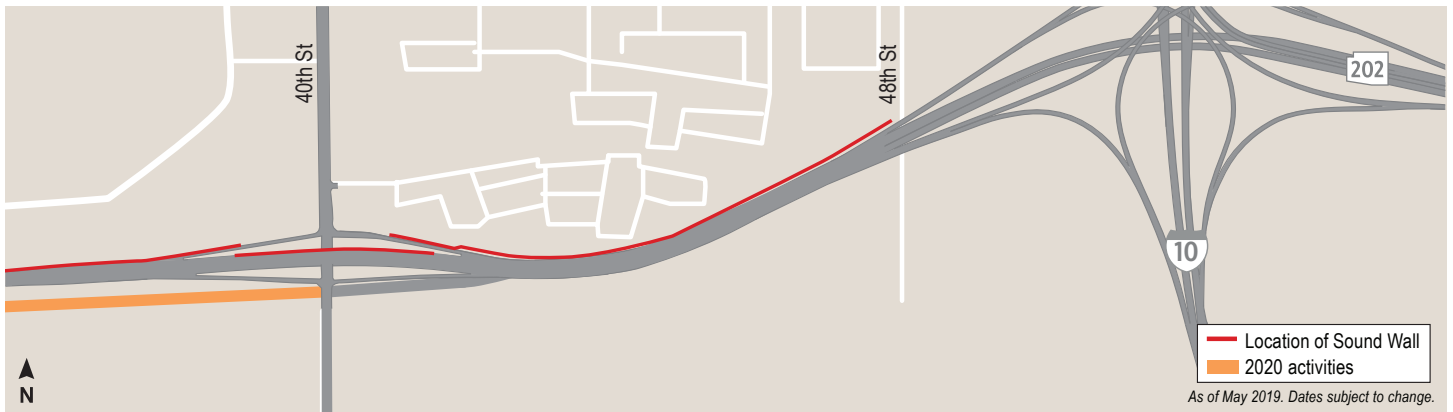
Van Buren Street and Lower Buckeye Road Street Improvements

Van Buren Street and Lower Buckeye Road final street improvements will include two lanes in each direction as well as turn lanes. Improvements, including new traffic signals, signage and striping, will be made where these streets intersect with 59th Avenue.



PECOS SEGMENT

Loop 202 South Mountain Freeway between 40th Street and 32nd Lane



2019 Traffic Restrictions and Closures

Remaining construction activity through 2019 for the Pecos segment of the Loop 202 South Mountain Freeway will focus on completing interchanges and cross-street improvements at the interchanges, final paving, sound walls, lighting, signals and signage.

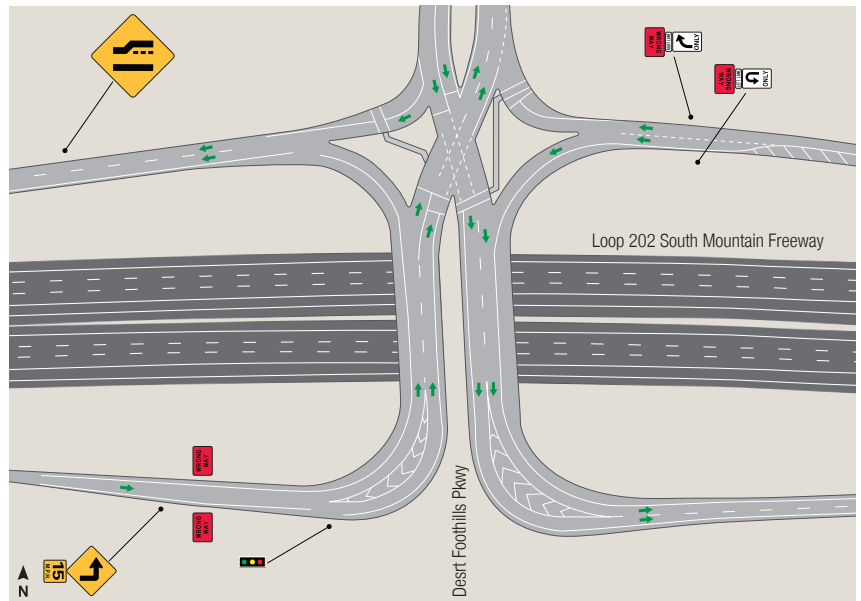
The following restrictions and closures are anticipated in the Pecos segment through late 2019. Dates and times of restrictions and closures will be published in the weekly traffic alerts, and construction alerts will be distributed for extended or weekend closures.

- A four-month closure of 40th Street at Pecos Road began in May for interchange construction
- Traffic shifts from Pecos Road onto completed portions of the freeway
- Continuation of the existing traffic shift to the freeway between 17th Avenue and Desert Foothills Parkway to construct interchanges
- Lane restrictions and weekend and overnight closures on Pecos Road, 40th, 32nd and 24th streets, Desert Foothills Parkway and 17th Avenue to complete cross-street improvements

Dates subject to change.



Looking west toward 17th Avenue Diverging Diamond Interchange construction April 2019



Diverging Diamond Interchange



BEFORE: Looking west toward Pecos Road and 40th Street intersection September 2016



AFTER: Looking west toward 40th Street April 2019

2020 CONSTRUCTION ACTIVITIES

32nd Street Traffic Interchange

Following an extensive environmental study and public outreach effort, ADOT will add a Loop 202 South Mountain Freeway interchange at 32nd Street. The interchange will be constructed as a separate project to ensure that the additional work will not delay the opening of the freeway in late 2019. Construction of the connecting ramps will take place in early 2020.

Shared-use Path

An exciting community feature of the Loop 202 South Mountain Freeway project is the six-mile, shared-use recreational path along the existing Pecos Road, on the south side of the freeway between 17th Avenue and 40th Street. The path, which will be physically separated from the freeway, will accommodate pedestrians and other forms of non-vehicular traffic and will provide important connectivity for bicyclists as part of the City of Phoenix Comprehensive Bicycle Master Plan. Construction of the shared-use path will begin in 2020, once the freeway is open to traffic. Connect 202 Partners will construct the path, and the City of Phoenix will be responsible for maintaining it.



SALT RIVER SEGMENT

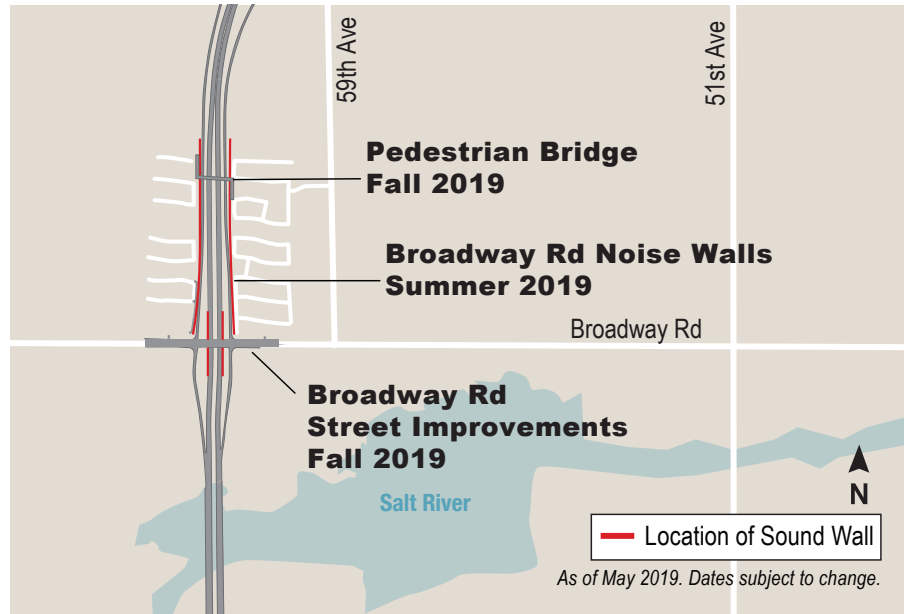
2019 Traffic Restrictions and Closures

The following restrictions and closures are anticipated in the Salt River segment through late 2019. Dates and times of restrictions and closures will be published in the weekly traffic alerts, and construction alerts will be distributed for extended or weekend closures.

- Periodic nightly closures of Broadway Road between 59th and 63rd avenues for cross-street improvements
- Traffic shift on Broadway Road with one lane of traffic maintained in each direction until Fall 2019

Dates subject to change.

Salt River Segment Ongoing and Upcoming Activities



BEFORE: Looking north toward Salt River September 2016



BEFORE: Looking north toward Estrella Drive September 2016



AFTER: Looking north at the bridges over the Salt River April 2019



AFTER: Looking northwest toward the Estrella Drive interchange April 2019

CENTER SEGMENT

2019 Traffic Restrictions and Closures

The following restrictions and closures are anticipated in the Center segment. Dates and times of restrictions and closures will be published in the weekly traffic alerts and construction alerts will be distributed for extended or weekend closures.

- Temporary traffic shifts on local streets in the Dusty Lane community around the work zone
- Overnight road closures in the Dusty Lane community for bridge work
- Flagging operations for truck traffic

Dates subject to change.



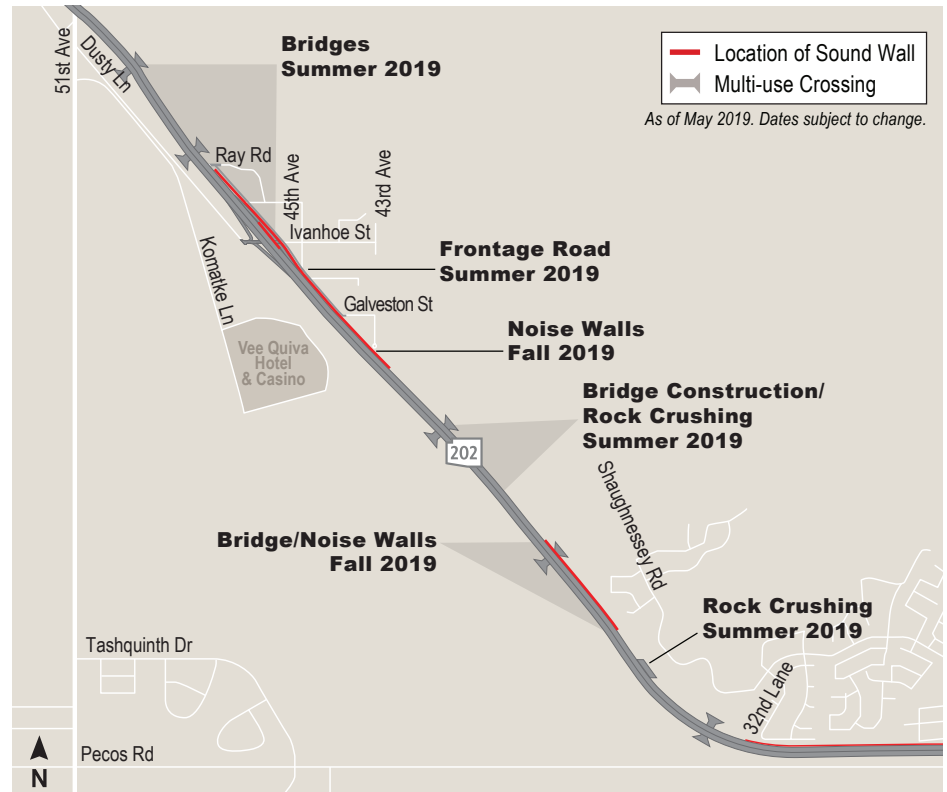
BEFORE: Dusty Lane looking north toward 51st Avenue September 2016



AFTER: Dusty Lane looking north toward 51st Avenue April 2019



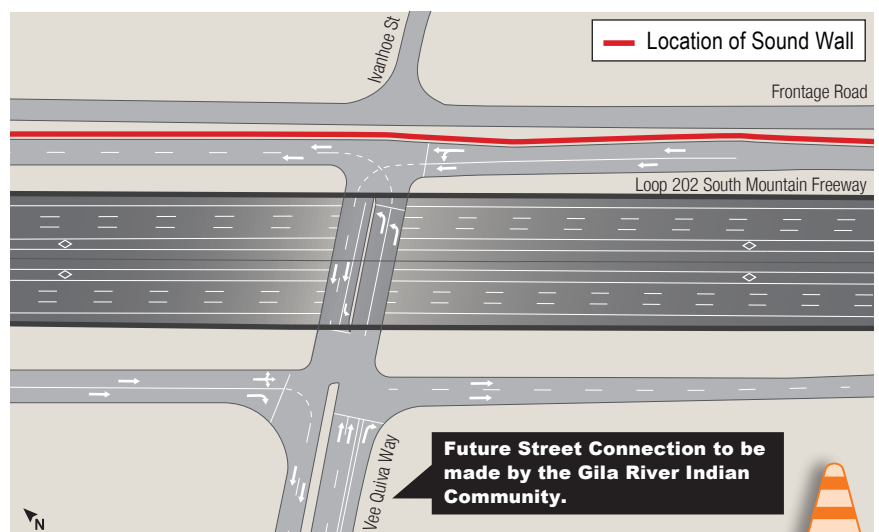
Dusty Lane looking west toward 51st Avenue April 2019



2020 CONSTRUCTION ACTIVITIES

Vee Quiva Way Interchange

Following an extensive environmental study and public outreach effort, ADOT will add a Loop 202 South Mountain Freeway interchange in the Center segment. The configuration will have on- and off-ramps to the new Vee Quiva Way, serving areas west of the freeway. A design modification developed in coordination with community input provides access to the Dusty Lane community via an underpass at Ray Road. The crossing will be accessible from 51st Avenue and Dusty Lane after a new access road is constructed. The new interchange will open in conjunction with the South Mountain Freeway in late 2019.



LOOP 202 SOUTH MOUNTAIN FREEWAY



FAST FACTS

- | | |
|---|-----------------------------------|
| 22 NEW MILES OF FREEWAY | 6 MILES OF SHARED-USE PATH |
| 41 BRIDGES | 5 MULTI-USE CROSSINGS |
| 15 INTERCHANGES
1 DOUBLE ROUNDABOUT
2 HALF DIVERGING DIAMOND | 1 SYSTEM INTERCHANGE |
| 12 MILES OF SOUND WALLS | 1 PEDESTRIAN BRIDGE |

LOOP 202
South Mountain
Freeway

**SIGN UP FOR WEEKLY
TRAFFIC ALERTS**

www.SouthMountainFreeway.com/FollowUs

-  Like us on Facebook: @SouthMountainFreeway
-  Follow us on Instagram: @SouthMountainFreeway
-  Website: www.SouthMountainFreeway.com

-  Hotline: 1.855.SMF.L202 (1.855.763.5202)
-  En español: 623.239.4558
-  Email: SMFinfo@C202P.com

Pursuant to Title VI of the Civil Rights Act of 1964 and the Americans with Disabilities Act (ADA), ADOT does not discriminate on the basis of race, color, national origin, or disability. Persons who require a reasonable accommodation based on language or disability should contact the South Mountain Freeway project team at 1.855.763.5202 or SMFinfo@C202P.com. Requests should be made as early as possible to ensure the project team has an opportunity to address the accommodation. Si usted necesita la asistencia de un traductor o intérprete en español, por favor comuníquese al 623.239.4558.