

The logo for the Arizona Department of Transportation (ADOT), consisting of the letters "ADOT" in a white, bold, sans-serif font on a dark blue background.An aerial photograph showing a multi-lane highway interchange with several overpasses and ramps. The surrounding area includes parking lots, commercial buildings, and some undeveloped land. The text "Interstate 10/Baseline Road Traffic Interchange Study" is overlaid in white, bold, sans-serif font across the center of the image.

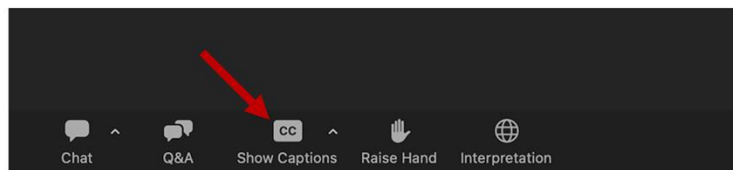
Interstate 10/Baseline Road Traffic Interchange Study

Welcome!

Good evening everyone and welcome to the public meeting for the Interstate 10/Baseline Road Traffic Interchange Study. My name is Nancy Becerra, Community Relations Project Manager with the Arizona Department of Transportation

I-10/Baseline Road Traffic Interchange Study

- All participants have been muted to avoid background noise.
- Following the meeting presentation, we will take questions and comments online and by phone.
 - Instructions will be provided.
- To turn on closed captioning select that option from the menu.



ARIZONA DEPARTMENT OF TRANSPORTATION

Participants are joining us via their computers on Zoom or through their phones and are currently muted. I'll describe the meeting format and how to participate in just a moment, but first, if you are having any technical issues right now, you may need to hang up or log off, then redial or reconnect. Please note this meeting is being recorded. The recording will be posted to the project website. If you would like to turn on closed captioning, click Closed Caption on the bottom of your screen to start viewing closed captioning. Click Live Transcript, then select Show Subtitle. The format for tonight is a short presentation, followed by an open question and answer session. After the presentation, we'll provide instructions on how to ask a question or comment by phone or online. Keep in mind that after this meeting, you can continue to ask questions or provide comments through May 23. We'll tell you how at the end of the meeting.



ADOT'S NONDISCRIMINATION NOTICE TO THE PUBLIC

The Arizona Department of Transportation (ADOT) hereby gives public notice that it is the Agency's policy to assure full compliance with Title VI of the Civil Rights Act of 1964, Title II of the Americans with Disabilities Act of 1990 (ADA), and other related authorities in all of its programs and activities.

ADOT's Title VI and ADA Programs require that no person shall, on the grounds of race, color, national origin, or disability, be excluded from participation in, be denied the benefits of, or be otherwise subjected to discrimination under any program or activity.

Any person who believes his/her Title VI or ADA rights have been violated, may file a complaint. Any such complaint must be in writing and filed with the ADOT Civil Rights Office within one hundred eighty (180) days following the date of the alleged discriminatory occurrence. For additional information about ADOT's Civil Rights programs and the procedures to file a complaint contact ADOT Civil Rights Office via the information listed below:

ADOT Civil Rights Office
206 S. 17th Avenue, Mail Drop 155-A
Phoenix, AZ 85007
602.712.8946 FAX 602.239.6257
CivilRightsOffice@azdot.gov

Danielle Valentine
Title VI Program Coordinator
DValentine@azdot.gov

ARIZONA DEPARTMENT OF TRANSPORTATION

ADOT complies with Title VI of the Civil Rights Act of 1964, Title II of the Americans with Disabilities Act of 1990, and other related authorities in all of its programs and activities.

Any person, who believes his/her Title VI or ADA rights have been violated, may file a complaint by contacting the ADOT Civil Rights Office at 602-712-8946 or by email at civilrightsoffice@azdot.gov within 180 days of the alleged violation.



AVISO PÚBLICO DE LA LEY DE NO-DISCRIMINACIÓN DE ADOT

El Departamento de Transporte del Estado de Arizona (ADOT) informa al público que la agencia tiene como regla asegurar el cumplimiento de el Título VI de la Ley de los Derechos Civiles de 1964, del Título II de la Ley de ciudadanos Americanos con Discapacidades de 1990 (ADA) y otras normas relacionadas con todos sus programas y actividades.

Los programas del Título VI y ADA de ADOT exigen que a ninguna persona se le excluya de participar, se le nieguen beneficios o de ninguna otra manera sea sujeta a discriminación en ningún programa o actividad de ADOT por motivo de raza, color, país de origen, o discapacidad.

Cualquier persona que crea que se han violado sus derechos bajo el Título VI o el ADA, puede presentar una queja. Esta queja debe presentarse por escrito a la Oficina de Derechos Civiles de ADOT dentro de ciento ochenta (180) días a partir de la fecha en que se alega que ocurrió la discriminación. Para recibir más información sobre los programas de Derechos Civiles de ADOT y los procedimientos para presentar una queja, por favor póngase en contacto con la Oficina de Derechos Civiles de ADOT con la información que aparece abajo:

ADOT Civil Rights Office
206 S. 17th Avenue, Mail Drop 155-A
Phoenix, AZ 85007
602.712.8946 FAX 602.239.6257

Danielle Valentine
Title VI Program Coordinator
DValentine@azdot.gov

ARIZONA DEPARTMENT OF TRANSPORTATION

We will have a brief pause to allow individuals to read this information in Spanish while it is described in the Spanish channel.

Interpreter in the simultaneous Spanish channel: ADOT tiene como regla asegurar el cumplimiento total del Título VI de la Ley de los Derechos Civiles de 1964, del Título II de la Ley de ciudadanos Americanos con Discapacidades de 1990 (ADA) y otras normas relacionadas con todos sus programas y actividades.

Cualquier persona que crea que se han violado sus derechos bajo el Título VI o el ADA, puede presentar una queja. Por favor póngase en contacto con la Oficina de Derechos Civiles de ADOT a 602.712.8946 o civilrightsoffice@azdot.gov.



Auxiliary Aids and Services

In compliance with Title II of the Americans with Disabilities Act (ADA), Section 504 of the Rehabilitation Act of 1973, the Arizona Department of Transportation (ADOT) does not discriminate against qualified individuals with disabilities on the basis of disability in its programs, services and activities.

ADOT will make reasonable modifications to ensure that individuals with disabilities have an equal opportunity to enjoy ADOT's programs, services and activities.

If you require an accommodation, please notify an ADOT staff member.

For additional information or questions about ADOT's External ADA Program, please contact the Civil Rights Office at 602.712.8946.

ARIZONA DEPARTMENT OF TRANSPORTATION

ADOT will make reasonable accommodations to ensure that individuals with disabilities have an equal opportunity to enjoy ADOT's programs, services, and activities.

If you require an accommodation, please contact Nancy Becerra at 623-695-7411 or ngbecerra@azdot.gov

Tonight's Presenters

- Olivier Mirza, P.E., ADOT Project Manager
- Mark Gilliland, P.E., Associate Vice President, AZTEC Engineering, Design Project Manager
- Other project team members available for the Q&A

Before we begin the presentation, I'd like to introduce tonight's presenters. They are:

Olivier Mirza, registered Professional Engineer in the state of AZ and is ADOT's Project Manager on this Study and

Mark Gilliland, registered Professional Engineer and the consultant Project Manager from AZTEC Engineering. Additionally, other project team members are available for the Q&A session.

Now, I will hand the presentation off to Mark.

Purpose of Tonight's Meeting

- Overview of Interstate 10/Baseline Road Traffic Interchange Study
- Opportunity to ask questions and provide comments



ARIZONA DEPARTMENT OF TRANSPORTATION

Thank you Nancy for the introduction,

The purpose of tonight's meeting is to give you an overview of I-10/Baseline Rd. Traffic Interchange design and concept report (DCR) that began in January. After that we will open up the presentation to the public for questions and to provide comments.

With this, I will hand over the presentation to Mark

Study Area

- Study Limits: On Baseline Road, 48th Street to Hardy Drive
- Construction Limits: Calle los Cerros Drive to Priest Drive
- Study Partners: Town of Guadalupe, City of Phoenix, City of Tempe, Maricopa Association of Governments (MAG)



The study limits along Baseline Road are 48th Street at the west end and Hardy Drive at the east. The construction limits along baseline road are anticipated to be between Calle Los Cerros Drive and Priest Drive. Within these limits Baseline Road touches four jurisdictions: Phoenix, Tempe, Guadalupe, and ADOT. Phoenix maintains the intersection of 48th Street and Baseline Road. Tempe maintains Baseline Road from 48th Street to Hardy Drive, while ADOT maintains the entrance and exit ramps to I-10 as well as the bridge overpass. Guadalupe's northern-most limits are between the I-10 and Avenida del Yaqui on the south side of Baseline Road.

Study Purpose and Need

- Significant multimodal traffic volumes and congestion
- Multiple traffic signals, roads and driveways close to interchange
- High crash rate
- Heavy pedestrian and bicycle traffic, safety and connectivity concerns
- Develop alternatives and recommend an alternative for final design

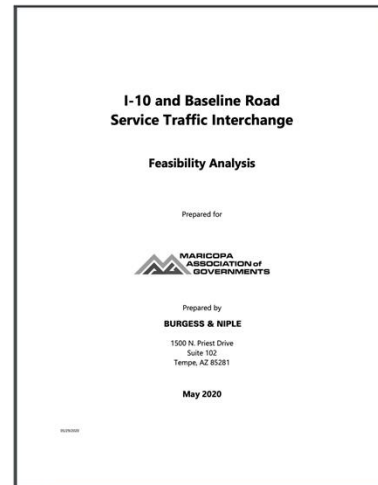


ARIZONA DEPARTMENT OF TRANSPORTATION

Study Purpose and Need: Baseline Road at Interstate 10 is a major arterial road serving approximately 60,000 vehicles per day and experiences heavy congestion and delays. There are several intersections and numerous driveways along the corridor serving adjacent commercial and residential development, which contribute to congestion and crashes. The corridor has a higher rate of crashes compared to the region. Additionally, the corridor has heavy pedestrian and bicycle traffic, with connectivity and safety challenges, including pedestrian facilities that do not meet current standards, intersections without marked crosswalks on all sides and lack of dedicated bike lanes. Due to these issues, the current infrastructure and interchange design may no longer be adequate to meet the needs of the diverse traveling public. The development and evaluation of alternatives to address these concerns was found to be necessary. The purpose of this study and project is to further evaluate the two design options for the interchange and select a preferred alternative for further action.

Feasibility Study

- Completed by Maricopa Association of Governments (MAG) in 2020
- The study identified two interchange types and other roadway improvements for further evaluation.



A feasibility study completed in May 2020 by the Maricopa Association of Governments (MAG) identified interchange types to enhance regional travel and safety in this corridor with various improvements to the Interstate 10/Baseline Road Traffic Interchange and serves as the basis for the current study.

The two types of interchanges identified for further consideration were a Tight Diamond Interchange and Diverging Diamond Interchange. I will go over those shortly.

A copy of the feasibility report can be found on the project website at azdot.gov/i10baseline

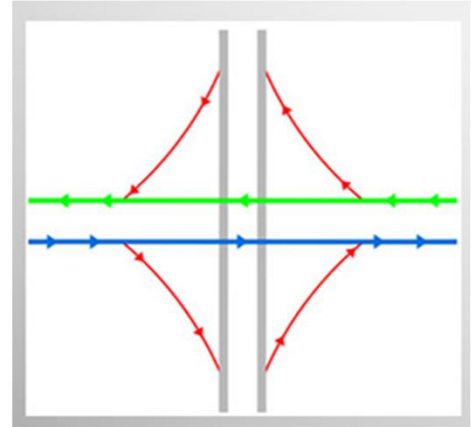
Study Process

- Public and agency scoping process to identify concerns, constraints and priorities
- Data collection and traffic modeling
- Develop and refine potential alternatives
 - Engineering analysis and environmental analysis
 - Right of way and costs evaluation
- Identify preferred alternative and obtain public input
- Select alternative and prepare final Design Concept Report and environmental document

The study process for this effort will follow an established process. We are currently in the scoping phase of this process, looking to gather community concerns and input. We continue to collect data such as survey and traffic projections as needed to perform the traffic modelling. We are also beginning to develop potential alternatives for the interchange and Baseline Road improvements. In the future, we will be conducting engineering and environmental analyses, and evaluating right of way impacts and costs. We anticipate returning with a preferred alternative for public comments in the Fall of 2023, and completing the study in 2024.

Tight Diamond Interchange (TDI)

- Option 1: Modify existing Tight Diamond Interchange to improve traffic operations
 - Add through lanes
 - Lengthen left/right turn lanes
- Tight Diamond Interchange Considerations
 - User familiarity
 - Traditional signal configuration
 - Compact footprint



ARIZONA DEPARTMENT OF TRANSPORTATION

The first option for improving the traffic interchange that was recommended for advancement in the feasibility study was for the interchange to remain a tight diamond, with features intended to improve operation of the interchange and reduce vehicle queues.

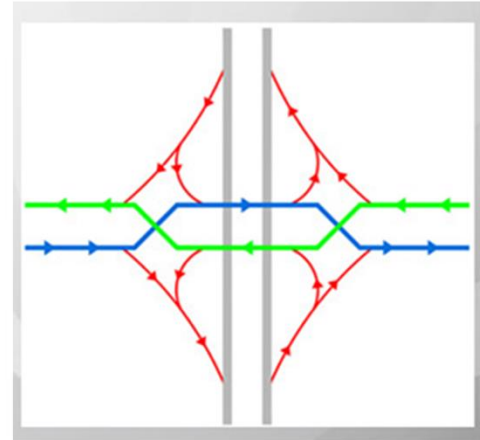
A Tight Diamond Interchange is the most common traffic interchange on freeways in the Valley

For example as you typically see when driving, the eastbound traffic will remain in the right lane and continue through the interchange but it does require northbound traffic to cross through traffic to make a left turn.

This interchange allows for a compact footprint.

Diverging Diamond Interchange (DDI)

- Option 2: Reconstruct to a Diverging Diamond Interchange (DDI) design
- Diverging Diamond Interchange features:
 - Minimizes conflict points between traffic
 - Accommodates heavy left and right turn movements
 - Traffic shifts to left side of road
 - Allows free-flowing lefts to enter freeway
 - Two phase signal configuration
 - Extended footprint



ARIZONA DEPARTMENT OF TRANSPORTATION

The second option is a Diverging Diamond Interchange (DDI) with signalized ramps to and from I-10.

DDI's are increasingly used nationwide due to improved safety features and traffic flow. Their features include traffic shifts as shown in the graphic that allows left turn movements to not intersect with through traffic and simplifies the signal phasing. **ADOT has several other DDIs** in the valley including at Happy Valley Road and I-17.

For instance, the blue line represents eastbound traffic that needs to shift to the left side as it goes through the interchange and allows for a free left turn for northbound traffic and further requires the eastbound traffic to shift back to the right to move on.

This interchange requires a more extended footprint.

Study Elements

The study will include an engineering design concept report and environmental document that will evaluate the following items:

- Improving the existing Tight Diamond Interchange (TDI) or converting the existing interchange to a Diverging Diamond Interchange (DDI)
- Consolidating driveway access on Baseline Road
- Reducing the number of signalized intersections in close proximity to the interchange
 - Could result in realignment of minor roadways within the project limits
- Improving active transportation operations along Baseline Road
 - Bring sidewalks, ramps and driveways up to current standards

The study will include an engineering design concept report (DCR) and environmental document.

The DCR will develop, evaluate and compare preliminary roadway design alternatives and their impacts to existing traffic and environmental factors to select the preferred alternative which includes evaluating the following items:

- Improving the existing Tight Diamond Interchange or converting the existing interchange to a Diverging Diamond Interchange,
- Minimizing right of way impact by consolidating driveway access on Baseline Road,
- Reducing the number of signalized intersections in close proximity to the interchange which could result in the realignment of some minor roadways within the project limits and
- Improving active transportation operations along Baseline Road by bringing sidewalks, ramps and driveways up to current standards

Study Timeline

- Public Scoping Meeting - May 9, 2023
- Public Meeting for Design Alternatives - Fall 2023
- Completed Study - Spring 2024
- Design/Construction Funding - not currently programmed



Study Timeline: We're here tonight at the Public Scoping Meeting. The alternatives will be developed and evaluated this Summer and Fall. We anticipate bringing this information back at a second public meeting later in the Fall of this year and completing the Study in 2024. This project has been funded for the design concept report and environmental document phase only, the design and construction funding is not currently programmed.

Now I'll turn it back over to Nancy.

More Information and Mailing List

- Visit project website:
azdot.gov/i10baseline
- View presentation
- Sign up for project mailing list to be notified of updates at
azdot.gov/i10baseline

The screenshot shows the ADOT website page for the Interstate 10/Baseline Road Traffic Interchange. The page features a navigation menu with options like 'About', 'Motor Vehicles', 'Projects', 'Business', 'Planning', 'News', 'Traffic', 'Maps', and 'Contact'. The main content area is titled 'Interstate 10/Baseline Road Traffic Interchange' and includes an 'Overview' section, a 'Project Area Map', and a 'Study Schedule' section. The 'Overview' section discusses the Arizona Department of Transportation (ADOT) studying potential improvements to traffic flow and safety at the I-10/Baseline Road traffic interchange. The 'Project Area Map' shows the location of the interchange in the Phoenix area. The 'Study Schedule' section indicates that the study is anticipated to be completed in 2024.

Thank you Mark!

For more information on the study, as mentioned earlier, we will be posting the recording of tonight's meeting on our project website at: azdot.gov/i10baseline

We encourage you to visit the website to sign up for the project mailing list.

Comments

How to provide comments through May 23, 2023:

- Tonight's meeting
- Online Survey: tinyurl.com/yv6vwbst
- Email: NGBecerra@azdot.gov
- Phone: 855.712.8530
- Mail: Nancy Becerra, ADOT Community Relations
1655 West Jackson, MD 126F
Phoenix, AZ 85007

We will be accepting comments through May 23. There are different ways you can comment or ask questions about the project. In just a moment, we will begin the question and comment portion of tonight's meeting. You can also submit questions and comments in the following ways:

Through the online survey to share your concerns and priorities at tinyurl.com/yv6vwbst, You can email me at ngbecerra@azdot.gov. You can call: 855-712-8530. Or, you can mail your comments to me at: Nancy Becerra, ADOT Community Relations, 1655 West Jackson, MD 126F, Phoenix, AZ 85007

Questions and Comments

- We will do our best to take questions and comments in the order received.

- Due to time constraints, to allow others time to comment:
 - Please limit verbal questions to no more than 30 seconds.
 - We may consolidate similar comments and questions.
 - There will be a limit of one question per person until all have had an opportunity to comment.

Now we'll begin the question and comments portion of the meeting.

We will do our best to respond to questions in the time available. Due to time constraints and to allow others time to comment, please be brief and limit your verbal question to no more than 30 seconds. If there are similar comments or questions received, we may consolidate them.

Additionally, please limit yourself to one question or comment until everyone has had an opportunity to comment.

If needed, we can extend our meeting time by up to 15 minutes to respond to questions. If we still have outstanding questions at that time, we will respond to written questions as part of the meeting summary and we will provide it to participants via email and post on our project web page.

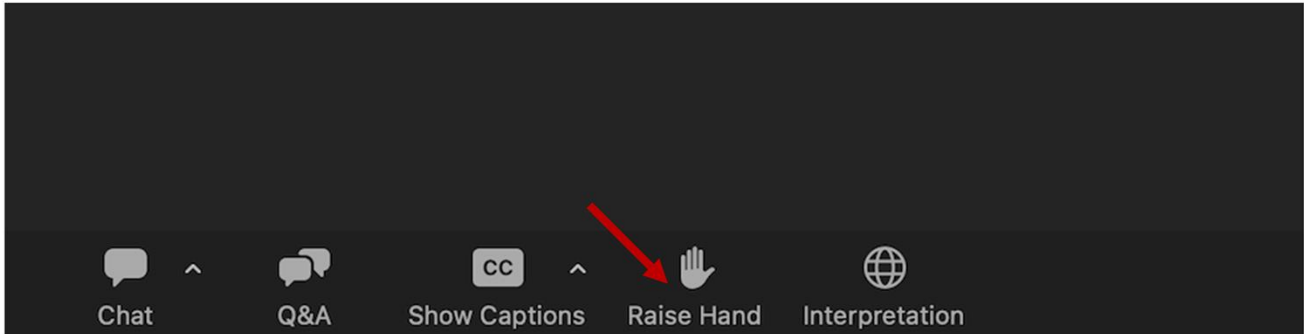
For those on the phone you may submit questions or comments by phone or the other methods described previously following the meeting.

How to Ask a Written Question

The screenshot displays a meeting control bar with several icons: Chat, Q&A, Show Captions, Raise Hand, and Inte. A red arrow points to the Q&A icon. To the right, a Q&A window is open, showing a 'Welcome to Q&A' message and a text input field labeled 'Type questions here'. Below the input field are 'Send anonymously', 'Cancel', and 'Send' buttons. At the bottom of the window, there is a link for 'Who can see your questions?'. The text 'ARIZONA DEPARTMENT OF TRANSPORTATION' is visible at the bottom of the meeting interface.

If you are participating in the online meeting, you can submit a written question or comment using the **Q&A function**. For our Spanish speakers when you provide comments in Spanish using the Q&A function a Spanish-speaking project team member will provide translation of both the question or comment and the response.

How to Ask a Verbal Question



For those on the phone:

- Press *9 to raise your hand.
- When prompted, enter *6 to be temporarily unmuted.

The second way to participate if you are joining the meeting online is to raise your hand by clicking on the Raise Hand icon at the bottom of your screen. When you raise your hand, the presenter will unmute you and call on you when it is your time to speak so you can be heard. Those who ask a question in Spanish will have it repeated in English by our interpreter and hear the response interpreted in Spanish.

For attendees joining us on the phone, please enter *9 to indicate you would like to speak and we will receive the hand raised signal. When we are ready for your question/comment our host will ask you to unmute yourself by pressing *6.

Jan:

Thank you Nancy. Good Evening, I'm Jan Gordley, a member of the outreach team for this project. I'll be helping take your questions this evening. Just as a reminder, in order to cover as many questions as possible, we may be paraphrasing and grouping some questions by similar topics in order to cover more information. And we may not have

time to get to all of them but will be providing answers in the summary of this meeting that will be added to the project website. We already have a few entered in the Q&A so we'll start with those and then go to anyone with a hand raised online and then on the phone. *(Begin reading questions.)*

#

Just as a reminder, if you're online and want to ask a question verbally, just click on the Raise Hand icon at the bottom of your screen. If you are on the phone, press Star 9 to raise your hand. I'll call on you when we're ready for your question and let you know to unmute yourself. If you're on the Spanish language...

#

We're at 7:00, however we still have a few questions to take so we'll keep going until about 7:15 to get more in.

It's now time to close the meeting. Thank you so much for time participating and letting ADOT and the project team know your questions and concerns. We hope to see you again at our next public meeting planned for this fall.

Now I see we have someone on the phone with their

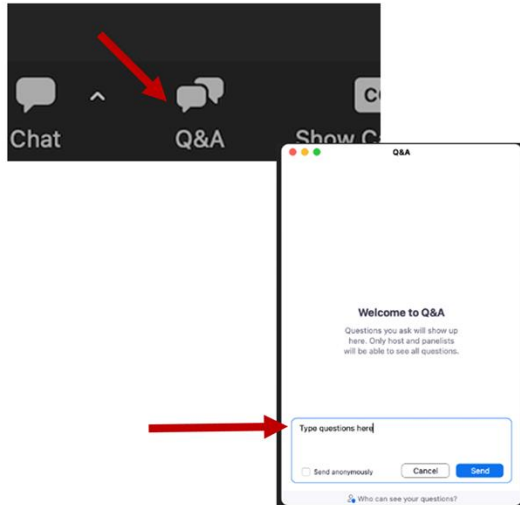
Now back to Nancy to close the meeting.

We seem to have address all of the questions we have at the moment, so we'll share a couple of question we hear frequently on similar projects...

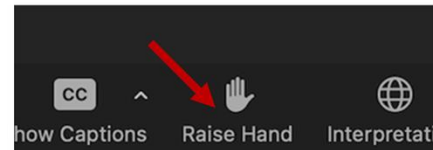
X What pedestrian or bicycle improvements are planned?

How will the range of alternatives be narrowed to a "recommended preferred alternative" moving forward?

Ask a Written Question:



Ask a Verbal Question:



Thank you Nancy. Good Evening, I'm Jan Gordley, a member of the outreach team for this project. I'll be helping take your questions this evening. Just as a reminder, in order to cover as many questions as possible, we may be paraphrasing and grouping some questions by similar topics in order to cover more information. And we may not have time to get to all of them but will be providing answers in the summary of this meeting that will be added to the project website. We already have a few entered in the Q&A so we'll start with those and then go to anyone with a hand raised online and then on the phone. *(Begin reading questions.)*

#

Just as a reminder, if you're online and want to ask a question verbally, just click on the Raise Hand icon at the bottom of your screen. If you are on the phone, press Star 9 to raise your hand. I'll call on you when we're ready for your question and let you know to unmute yourself. If you're on the Spanish language...

#

We're at 7:00, however we still have a few questions to take so we'll

keep going until about 7:15 to get more in.

It's now time to close the meeting. Thank you so much for time participating and letting ADOT and the project team know your questions and concerns. We hope to see you again at our next public meeting planned for this fall.

Now I see we have someone on the phone with their

Now back to Nancy to close the meeting.

We seem to have address all of the questions we have at the moment, so we'll share a couple of question we hear frequently on similar projects...

X What pedestrian or bicycle improvements are planned?

How will the range of alternatives be narrowed to a "recommended preferred alternative" moving forward?

Thank you for attending.

- For more information about the project, to make a comment or to sign up for the mailing list, visit azdot.gov/i10baseline
- You may also call 855.712.8530 for questions and comments.
- Reminder: Take our Self-ID Survey to assist us with federal reporting.
 - English: azdot.gov/I10BaselineSelf-id
 - Spanish: azdot.gov/I10baselineSelf-IdSpanish



English



Spanish

Before we close, I'd like to remind you that this presentation was recorded and will be posted to the project website.

We would like to encourage you to visit the website for more information and to sign up for the mailing list. We have posted the website link in the chat for your convenience. Also, if you have not already done so, please take the Anonymous Self-ID Survey. We have placed the link to the survey in the chat again for your convenience. Comments will be accepted until May 23. We will place the survey/comment form in the chat as well: tinyurl.com/yv6vwbst

If you have any follow-up questions or comments please use the contact form or contact me at Email: ngbecerra@azdot.gov

Thank you very much for your interest in the project and your participation.