

Business Engagement and Compliance

Pinal Seeking Funding for SR 24 Project

The Pinal County Board of Supervisors has voted to authorize an application for a \$25 million federal grant to partially fund the extension of State Route 24 from Ironwood Road, and begin building a connector route known as the Central Arizona Parkway.

The primary project goal is to provide relief for Ironwood Road, where traffic exceeds the designed capacity.

The connector will help residents from Queen Creek, Florence and San Tan Valley get to SR 24 more easily.

The first phase of the development, approximately six miles of construction, is expected to cost \$89 million. Pinal County has already committed funding for the project design.

In addition to the U.S. Department of Transportation RAISE Grant application, Pinal County will also seek funding from the state, county excise tax monies and may consider bond funding. (Source)



3 Questions to Improve Your Business Practices



New Fire Station Planned in Ahwatukee



Materials Prices Up 4.9% Year-over-Year



NEWLY CERTIFIED DBE FIRMS:

- Deccan Consulting LLC
- Kirschner Contractors
- Pacific Power Electrical Contracting

- ▶ EVENTS
- ▶ OPPORTUNITIES
- ▶ EXTERNAL LINKS

Quick assessment tips

3 Questions to Improve Your Business Practices

It is hard to have a clear view of your own company's operations. It is like the old saying that it is nearly impossible to see the forest for the trees. You are so involved in the totality of running your company that it is difficult to objectively evaluate many business practices because you are lost in the details and lose perspective of the big picture.

It is important to regularly review the effectiveness of operations for long-term firm success. When your processes and practices are effective and efficient, then you are likely to have satisfied (and loyal) clients and employees. Your profits will be steady, and your firm's long-term sustainability is strong.

Here are three questions to ask yourself to assess your current operations:



1. What does your firm's _____ process look like?

Fill in the blank for any process that you practice, such as project delivery, invoicing, accounts payable, client service, marketing, internal communications, etc. You can select a broad process, such as project delivery, or one that is more focused, such as handling client complaints. The point is to take time for open-minded brainstorming and candid review. Include a few members of your team who are involved in the process as well as those who are not because they can provide fresh insights. Discuss details and aspects that work and those that do not and identify specific challenges and outcomes.

2. What does the best practice process look like?

This second question is to capture the ideal state for the process. If there were no constraints, then what would be the optimal picture of success? Be sure to include all the outcomes in detail. Also include challenges that would be avoided.

3. What keeps you from achieving the best practice?

This step uncovers the gaps that prevent your operations from achieving their highest effectiveness. Be candid and open about practices that hinder your results, including a lack of accountability, training, resources, personnel, cashflow, equipment, office space, expertise, etc. Be specific in what keeps you from achieving better results.

4. Rate yourself.

Congratulations! You have dug deep about the status of a procedure or process, and next is when you objectively assess your status. On a scale of 0 for poor to 10 for superior, ask each team member to provide a numerical rating for your status. Average the scores. Now that you know what good looks like and where your operation is today, the rating serves as a benchmark to help you move the needle toward more effective and efficient practices.

These three questions are extremely helpful as we pull down our blinders and gain a more objective perspective about current operations. With a good view of what an excellent process looks like, we can address gaps that prevent us from achieving the highest level of success.

Be realistic and do not attempt to make all the changes overnight. Set goals that are specific, measurable, achievable, reasonable and timely. Regularly review progress, such as quarterly or semi-annually. At the end of the time you have designated to improve the process, pull the team together and rate yourself again. Have you improved? Why or why not? Then you can tackle another gap item and make additional changes to improve outcomes.

Use these three questions and rating exercise to evaluate any process in your company. You will certainly enjoy seeing the forest and trees from a new perspective. •

New Fire Station Planned in Ahwatukee

Phoenix Mayor Kate Gallego, Councilmember Sal DiCiccio and City Manager Jeff Barton have teamed up to secure a place in the 2023-2024 capital budget for a new fire station in Ahwatukee.

Fire Station 74 will be built on the northwest corner of 19th Avenue and Chandler Boulevard. The station will be between 12,000 and 13,000 square feet, and have three bays with a fire engine and a medical rescue vehicle.

Upon opening, Station 74 will be crewed by a staff that will start at the training academy in the coming fiscal year because the funds in the 2023-2024 budget include \$3 million for the first year and \$3 million each year thereafter as an operating budget.

DiCiccio reached out to the Mayor’s Office when no new fire station for the area was included in the project list for the upcoming \$500 million General Obligation bond that will go on the Phoenix November ballot. The two then worked with Barton to bring the plan to fruition.

Gallego expects the fire station development to happen quickly, since the city owns the land and the design will follow another station built three years ago in Norterra. Early predictions estimate the facility could be up and running in the next two years.

Construction costs are estimated at \$12 million, DiCiccio said. ([Source](#))



Credit: City of Phoenix/Ahwatukee Foothills News

Materials Prices Up 4.9% Year-over-Year

By Associated Builders and Contractors

Construction input prices rose 1.3% in January, according to an Associated Builders and Contractors analysis of the U.S. Bureau of Labor Statistics' Producer Price Index data. Nonresidential construction input prices increased 1.1% for the month.

Overall construction input prices are 4.9% higher than a year ago, which is the smallest annual increase since January 2021.

Nonresidential construction input prices are also up 4.9% since January 2022.

"Recent employment and retail sales reports indicate that the economy is not slowing nearly as quickly as predicted," said ABC Chief Economist Anirban Basu. "That is the good news. The bad news is that the economy remains overheated, a phenomenon neatly reflected in the January PPI data, which indicated

that construction input price gains accelerated on a monthly basis. For instance, construction machinery and equipment prices expanded 3.4% in January and are up more than 12% during the past year.

"The implication is that the Federal Reserve will maintain higher interest rates longer," said Basu. "Ironically, it is the current strength of the economy that makes a recession more likely

sometime during the next 12 months. At some point, higher interest rates will meaningfully affect economic activity. With industry backlog high, according to ABC's Construction Backlog Indicator, many nonresidential contractors will feel little to no effect from higher interest rates in 2023. But in certain construction segments and locations, these dynamics could make the next two years more challenging." ([Source](#))



Business Engagement and Compliance



****ATTENTION TO ALL FIRMS****

Need help preparing DBE affidavits?
Please see our tutorial video below:

["Preparing DBE Affidavits"](#)



MARCH

- 4** **AAED: 2023 Legislative Lunch on the Lawn**
11:30 a.m.
Location: 1700 W. Washington St., Phoenix
- 8** **IFMA: How To Build Strong Teams and Avoid a Toxic Work Environment**
11:30 a.m. - 1 p.m.
Location: 2435 S. 47th St., Phoenix
- 9** **BISNOW: Phoenix Construction & Development**
8 a.m.
Location: 100 N. First St., Phoenix
- 9** **ABA: Joint Association Mixer Hosted by INSURICA**
4 - 6 p.m.
Location: 1825 W. Adams St., Phoenix
- 9** **APWA Arizona March Tour and Luncheon with Northern Branch**
9:30 a.m. - 1 p.m.
Location: Prescott Conference Resort
1500 AZ-69, Prescott
- 10** **ULI Arizona 18th Annual Trends Day**
7 a.m. - 5 p.m.
Location: JW Marriott Desert Ridge
5350 E. Marriott Drive, Phoenix
- 14** **CCIM: Chicago Cubs Spring Training Networking Event**
5:30 - 9 p.m.
Location: Sloan Park, Mesa
- 14** **PMI: Cyber Security Awareness**
5 - 7 p.m.
Location: Brother John's BBQ
1801 N. Stone Ave., Tucson
- 16** **SMPS: The Marketing And Business Development Roadmap**
11:30 a.m. - 1 p.m.
Location: 1707 E. Highland Ave., Phoenix
- 16** **NAIOP Arizona Developing Leaders Spring Training Game - Salt River Fields at Talking Stick**
1 p.m.
Location: 7555 N. Pima Road, Scottsdale

Featured Federal-Aid Projects

CURRENT OPEN SOLICITATIONS

Due Date	Project Valuation	DBE Goal	Solicitation / Project Number	Type	Project Owner and Description	Contact
3/8/23 2 p.m.	N/A	7.31%	F0595 01D	IFB	ADOT - Port of entry site improvements, multiple locations. The work consists of consulting for project assessment and environmental overview for site improvements.	Engineering Consultants Section at ECSSOQ@azdot.gov
3/24/23 11 a.m. MST	\$312,000	5.77%	PPN-0(226)T; T031001C	IFB	ADOT - Overfield Road and Signal Peak Road, Casa Grande and Coolidge. The work consists of installing rumble strips along the edge of travel lanes and centerline for two miles of Overfield Road between Florence Boulevard to Kleck Road, and 3.6 miles of Signal Peak Road between State Route 87 south to Woodruff Road.	Iqbal Hossain, Group Manager of Contracts & Specifications, at ihossain@azdot.gov
4/7/23 11 a.m. MT	\$15 million	5.22%	008-B-(214)T; F038801C	IFB	ADOT - (I-8) Milepost 135-Pinal County Line, Maricopa County. The work consists of pavement and minor bridge rehabilitation including milling and repaving of mainline, shoulders, crossroads, ramps, bridge decks, and slabs; removing and replacing cattle guards, guard rails, spillways and removing bridge railing and replacing with concrete barrier.	Iqbal Hossain, Group Manager of Contracts & Specifications, at ihossain@azdot.gov

External Links:

[ADOT Current Advertisements](#)
[ADOT Advertised Alternative Delivery Projects](#)
[ADOT Engineering Advertisements](#)
[Bidding Opportunities Around the State](#)
[ADOT Public-Private Partnership Initiatives](#)

DBE SUPPORTIVE SERVICES PROGRAM

1801 W. Jefferson St., Suite 101, Phoenix AZ

602.712.7761

DBESupportiveServices@azdot.gov

I-17, ANTHEM WAY TI TO JCT. SR 69 (CORDES JUNCTION)



PROJECT OWNER

Arizona Department of Transportation

PROJECT NAME

I-17, Anthem Way TI to Jct. SR 69
(Cordes Junction)

Phoenix – Cordes Junction Highway

Public-Private Partnership
Design-Build-Operate-Maintain
Agreement

PROJECT NUMBER

17 MA 229 H6800 01C / NHPP-017-
A(228)S

DBE participation goal
established for this project:

10.16%
for Professional Services

10.88%
for Construction Work

OUR TEAM

The Kiewit-Fann Joint Venture (KFJV) is a strategic partnership between two trusted Arizona firms that have extensive experience working in rural environments, delivering highway projects. KFJV team members have an extensive history together on successful design-build and CMAR projects and have long-standing relationships with ADOT, local jurisdictions, and the community.

POTENTIAL SUBCONTRACT OPPORTUNITIES

KFJV is seeking diverse and local firms interested in pursuing multiple scopes of work on the I-17 Anthem Way project. The following scopes are open for solicitation:

- Aggregate Supplies (structural backfill, 3/4" drain rock)
- Bridge Deck Grooving
- Buy 3" PVC Underdrain
- Buy Epoxy Resin
- Buy Geocomposite Wall Drain & Pipe
- Buy Geogrid
- Buy Geotextile Fabric
- Buy Pipe Scuppers (deck drains)
- Buy PVC & CIP Wall Embeds
- Buy vehicle Arresting Barrier
- Core Holes for Bearing Pad Anchors
- Deck Drain Pipe & Appurtenances
- De-lead Existing Bridge Bearings
- Demo Embankment Curb
- Demo Guardrail & Barrier
- Demo ROW Fence (barbed wire and t-post)
- Flaggers
- Fully Operated & Maintained Equipment
- Install MSE Pedestrian Railing
- Install Rock Anchors
- Install Temp Detour Base Course
- Install Temp Detour Pavement
- Noise Wall
- Remove Ground Mounted Signs
- Routine Maintenance - Damaged Sign F&I
- Routine Maintenance - ITS Device Repairs
- Routine Maintenance - ROW Fence Repair (t-post & barbed wire)
- Security Services
- Shotcrete
- Small Tools & Supplies
- Sound Wall CMU
- Structural Paint Touch-up
- Temp Striping
- Traffic Control Labor
- Trucking
- Weld Bearing Replacements

Attachments: Wage Decision No. AZ20210008 Mod No. 0 - Dated 01/01/2021

TAKE THE FIRST STEPS

Head to <https://www.kiewit.com/business-with-us/opportunities/i-17-anthem-way-project/> to complete the Subcontractor Questionnaire and create an account with Building Connected, or for additional information and future event dates.

QUESTIONS? CONTACT US!

Contact us to learn about anticipated subcontract opportunities on the I-17 Anthem Way project at Flex.Outreach@kiewit.com and NAME at NAME@Kiewit.com.

KFJV is committed to meeting or exceeding stated project participation requirements upon award of ongoing and upcoming Arizona Department of Transportation projects; assisting interested DBEs in obtaining bonding, lines of credit or insurance; providing interested DBEs information related to the plans, specifications and requirements for work to be subcontracted or supplied by these DBEs; assisting interested DBEs in obtaining necessary equipment, supplies, materials or related assistance or services; sub-dividing bid items into economically feasible work units to DBEs every advantage to quoting the project.

KFJV is an Equal Opportunity Employer.

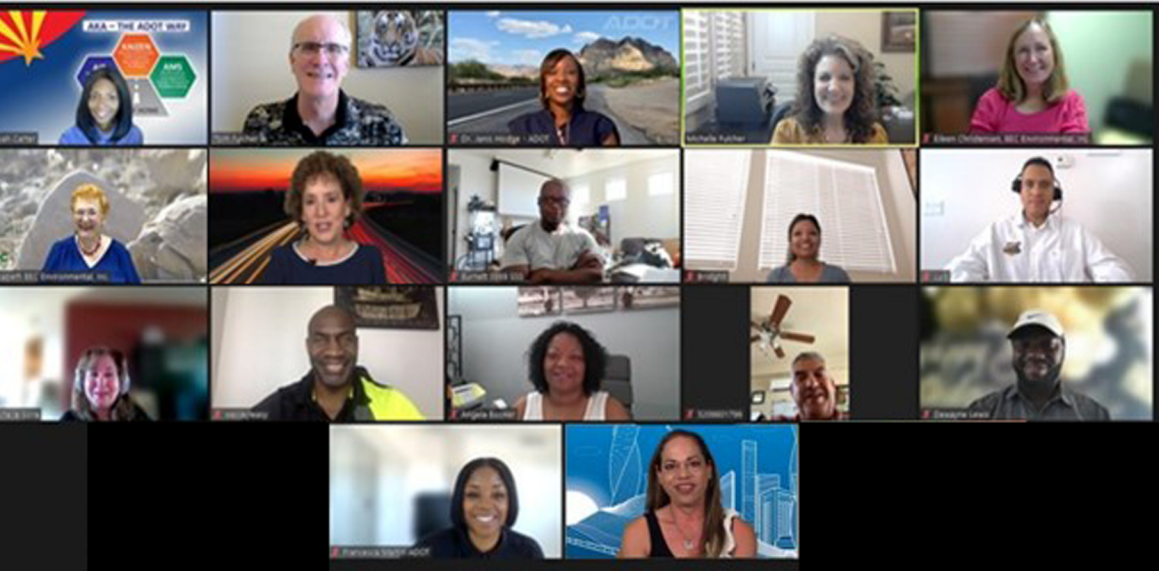


Business Engagement & Compliance

It's Your Turn

Grow Your Business

Whether you are brand new or looking to grow your business, the ADOT DBE Business Development Program has something for you!



Meet Our Graduates

<https://bit.ly/ADOTBDPGrads>

Watch Program Video to Discover More

<https://bit.ly/ADOT-DBESS-BDP>

LIMITED SPOTS REMAIN.
SIGN UP TODAY!

<https://bit.ly/ADOT-DBESS-BDP>