

PROJECT DELIVERY ACADEMY

MODULE 2: FEDERAL AUTHORIZATION OF A PROJECT



Presented by:

Philip Schaffer

Project Resource Office



Topic:

- *WORKFRONT!*

What is Workfront?

Workfront Support is available at:

adotWFsupport@azdot.gov

PROJECT DELIVERY ACADEMY

Workfront

- *Workfront has been around for 4 years at ADOT (June, 2018)*
- *Workfront has over 830 active users*
- *All of ADOT's projects that are in design are done in Workfront*
- *As of July 1, 2022 all review of design submittals should be done in Workfront using Proofing*
- *Workfront has "Custom" How-To's (designed specifically for ADOT) to show users how to use Workfront*

Workfront Support is available at:

adotWFsupport@azdot.gov

PROJECT DELIVERY ACADEMY

Workfront

Our two keywords are:

"Standardization" and "User Support"



Our Workfront saying:

"If it isn't in Workfront, it doesn't Exist!"

Workfront Support is available at:

adotWFsupport@azdot.gov

PROJECT DELIVERY ACADEMY

How To's Report Menu Delivery Dashboard Proofing ADMIN Dashboard Project Dashboard Resourcing Workfront Worksho... How To - For Project ... How To - General Us... Training - Workfront ... Unpin current page Help 1

More > PORTFOLIO 5 Year Constructio... | PROGRAM 342.00 - Urban Cor... | PROJECT SR 85 - VERRADO WA...

PROJECT SR 85 - VERRADO WAY ☆ ...

Percent Complete 100% Project Owner Madhav Mundle Planned Completion Date Dec 26, 2020 Condition In Trouble Status Complete

Tasks

+ New Task [→] v

# ↑	Task Name	Milestone	Job Role: Name	Responsible Group	Projected Completion Date	Percent Complete	Assignments	Duration	Predecessors	Planned Start	Planned Finish	Planned Hours	Task Constraint	Critical Path	Actual Start Date	Actual Completion Date	Assignments And Status
1	SR-85 to Verrado Way		Project Manager		4/18/22	100%	Project Manager	534 Days		11/30/18	12/26/20	40 Hours	Must Finish On	True	7/25/19	4/18/22	Project Manager (No status)
2	PE Federal Authorization (Obtained)		Project Manager	PMG	7/25/19	100%	Project Manager	1 Day		11/30/18	11/30/18	8 Hours	As Soon As Possible	False	7/25/19	7/25/19	Project Manager (No status)
3	Project Work Plan		Project Manager	PMG	7/25/19	100%	Project Manager	51 Days		11/30/18	2/12/19	16 Hours	Must Finish On	False	7/25/19	7/25/19	Project Manager (No status)
4	Design Start (NTP)	◆	Project Manager	PMG	7/25/19	100%	Project Manager	1 Day		11/30/18	11/30/18	8 Hours	As Soon As Possible	False	7/25/19	7/25/19	Project Manager (No status)
5	Project Start-up/Kick-off	◆		PMG	7/25/19	100%		1 Day	↳ 4	2/12/19	2/12/19	8 Hours	Must Start On	False	7/25/19	7/25/19	
6	Field Review Meeting 1		Project Manager	PMG	7/25/19	100%	Project Manager	1 Day	↳ 5	3/7/19	3/7/19	8 Hours	Must Start On	False	7/25/19	7/25/19	Project Manager (No status)
7	PM Supplies PA/DCR to Groups		Project Manager	PMG	7/25/19	100%	Project Manager	1 Day	↳ 6	1/29/19	1/29/19	8 Hours	Must Start On	False	7/25/19	7/25/19	Project Manager (No status)
8	Deliverables				4/18/22	100%		534 Days		11/30/18	12/26/20	0 Hours	Must Finish On	True	7/25/19	4/18/22	

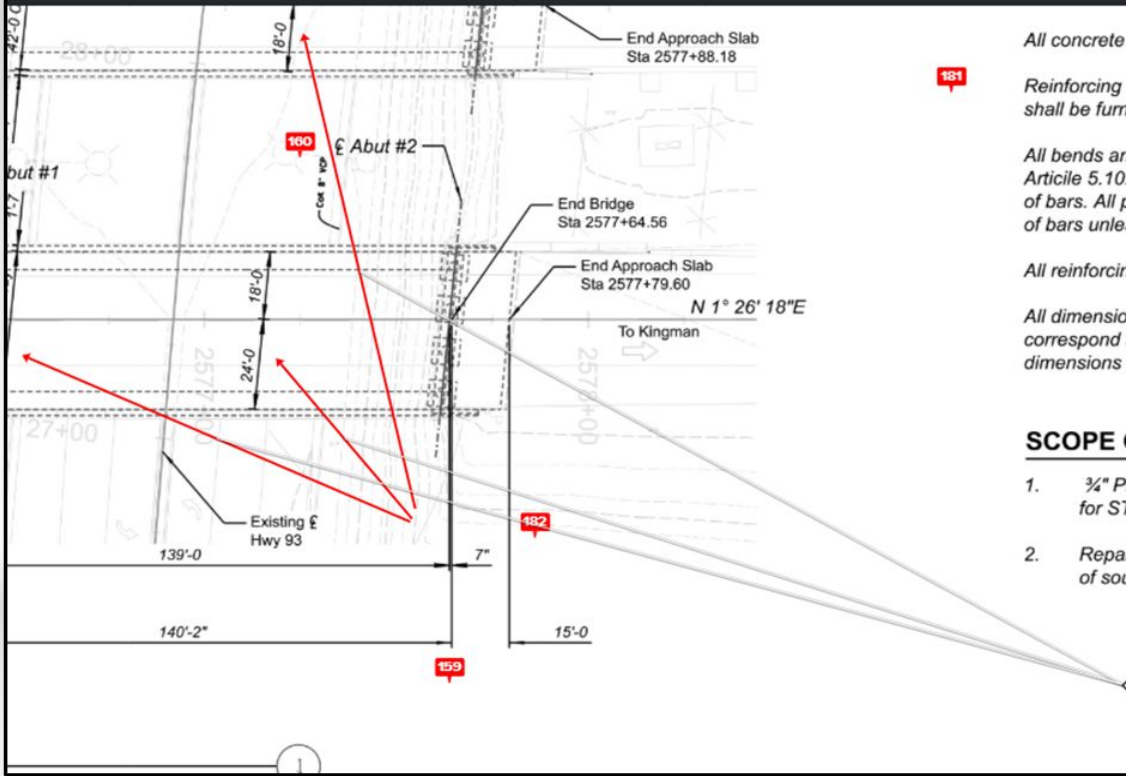
PROJECT

Workfront Support is available at:
adotWFsupport@azdot.gov



Add comment

240 NEW / 276 Latest



All concrete

Reinforcing s
shall be furn

All bends an
Article 5.10.
of bars. All p
of bars unles

All reinforcing

All dimension
correspond t
dimensions i

SCOPE C

1. ¾" PP
for ST
2. Repair
of sou

- MG** Mehrez U. Ghoreishi
8 days ago

162 Is it acceptable to have 2 different sizes for dimensions and also texts?

Page 341
- MG** Mehrez U. Ghoreishi
8 days ago

161 Arrow should be black

Page 341
- MG** Mehrez U. Ghoreishi
8 days ago

160 Should be Gray.

Page 340
- MG** Mehrez U. Ghoreishi
8 days ago

159 It looks like the dimension lines are tick.

Page 340
- MG** Mehrez U. Ghoreishi
8 days ago

158 The dimensions should be perpendicular to the road, not in skew

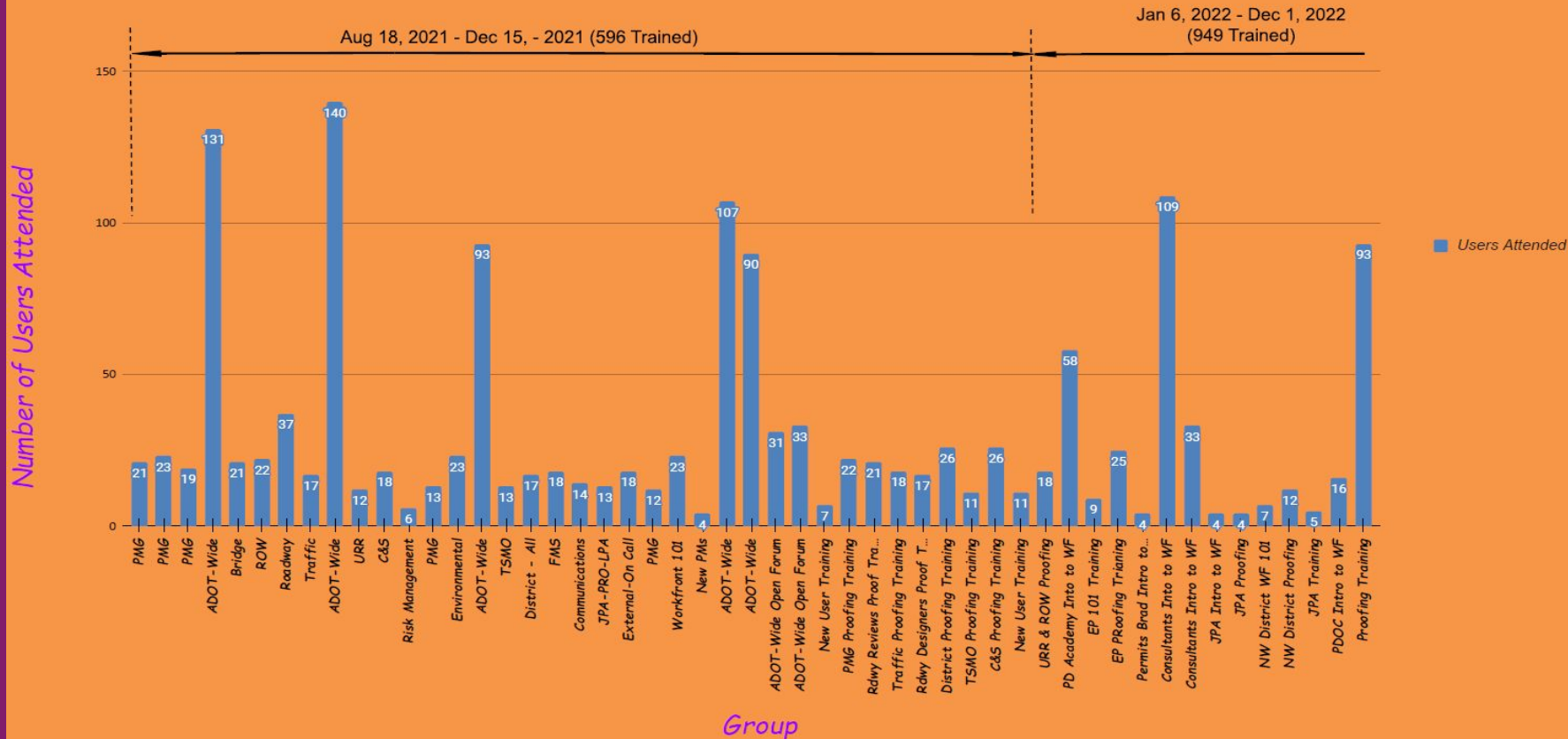
PROOFING

Workfront Support is available at:

adotWFsupport@azdot.gov



Workfront Training Metrics

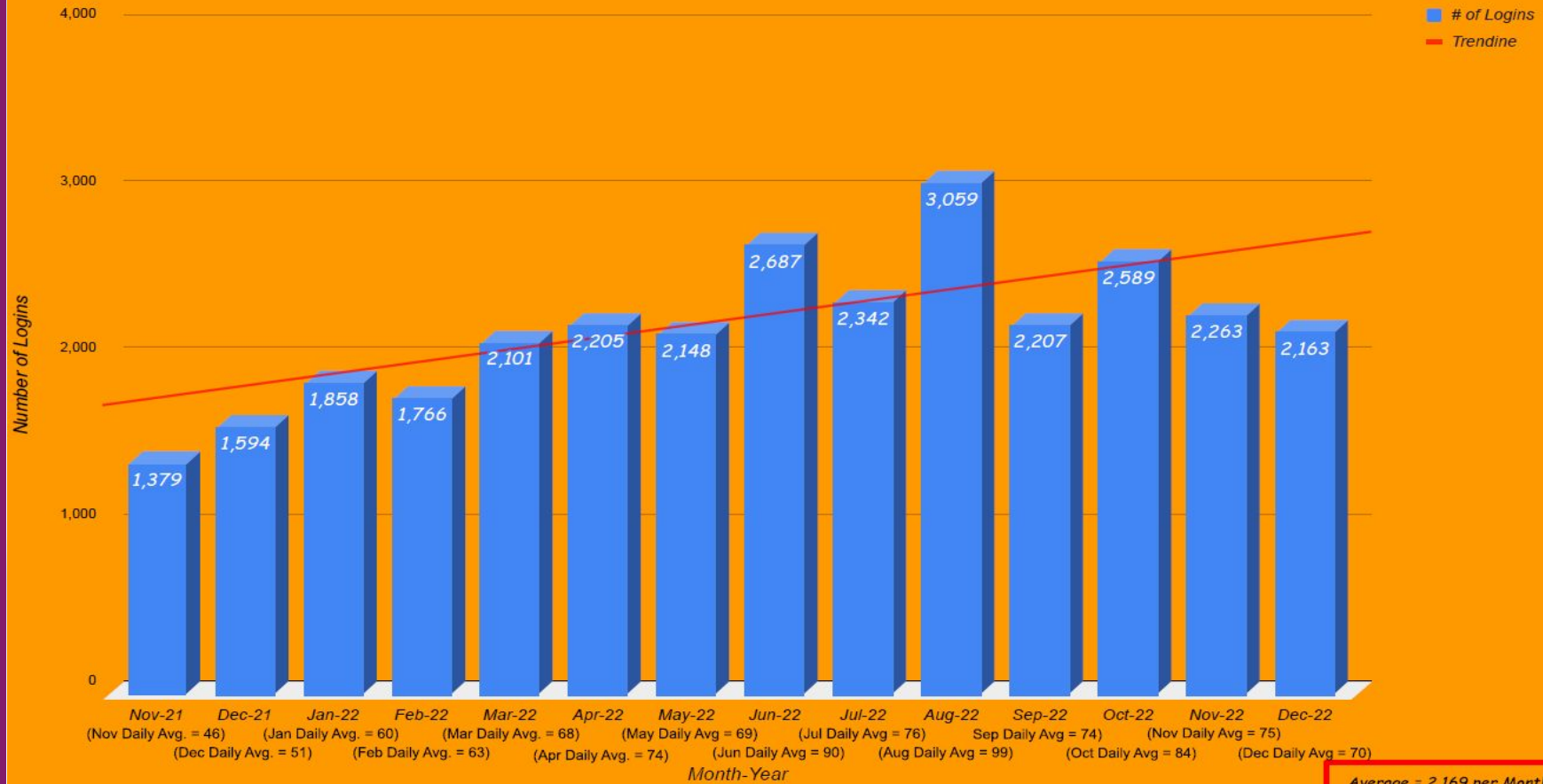


1,545 Total Workfront Users Trained

TRAINING



Workfront - Number of Logins per Month



Number of Logins Per Month

Workfront Support is available at:

adotWFsupport@azdot.gov



Questions?

Workfront Support is available at:

adotWFsupport@azdot.gov