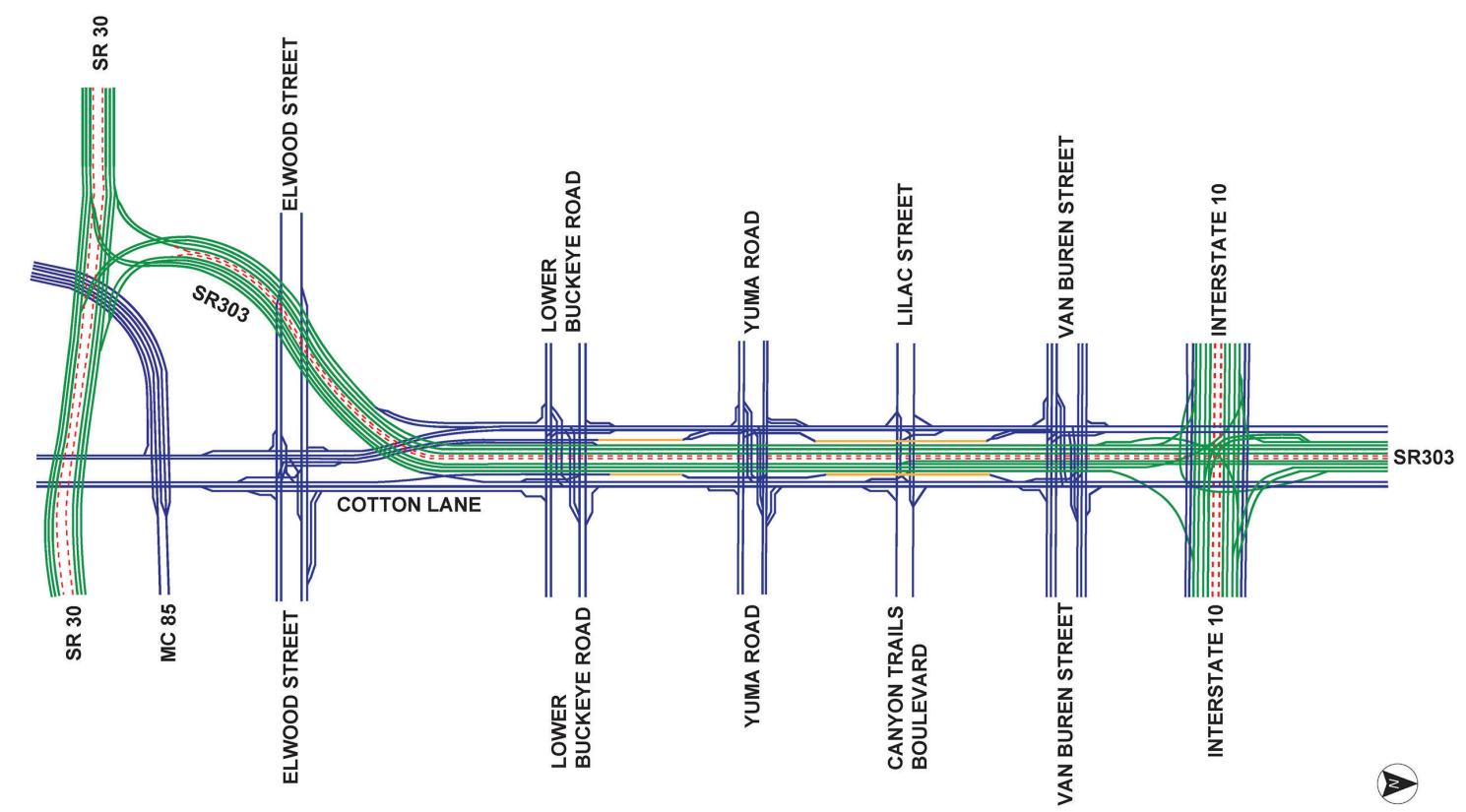


Future Loop 303, I-10 to SR 30

The ultimate plans for this section of Loop 303 include four-to five general purpose lanes and an HOV lane in each direction between I-10 and Elwood Street, with a direct system interchange connection to the future SR 30. Future access between Loop 303 and SR 85 would be available at the Elwood Street interchange.



MORE INFORMATION/UPDATES

For more information and to subscribe for project updates by email visit the project website at azdot.gov/L303-MC85-VanBuren.

QUESTIONS/COMMENTS

- Submit questions and comments by May 25, 2023 in any of the following ways:
- ▶ **Online Comment Form:** azdot.gov/L303MC85-VanBuren-CommentForm
 - ▶ **Phone:** 480.695.4027
 - ▶ **Email:** JTucker2@azdot.gov
 - ▶ **By Mail:** ADOT Communications, 1655 W. Jackson St., MD 126F, Phoenix, AZ 85007

Pursuant to Title VI of the Civil Rights Act of 1964, the Americans with Disabilities Act (ADA) and other nondiscrimination laws and authorities, the Arizona Department of Transportation (ADOT) does not discriminate on the basis of race, color, national origin, sex, age, or disability. Persons that require a reasonable accommodation based on language or disability should contact John Tucker at 480.695.4027 or JTucker2@azdot.gov. Requests should be made as early as possible to ensure the State has an opportunity to address the accommodation.

De acuerdo con el Título VI de la Ley de Derechos Civiles de 1964, la Ley de Estadounidenses con Discapacidades (ADA por sus siglas en inglés) y otras normas y leyes antidiscriminatorias, el Departamento de Transporte de Arizona (ADOT) no discrimina por motivos de raza, color, origen nacional, sexo, edad o discapacidad. Las personas que requieran asistencia (dentro de lo razonable) ya sea por el idioma o discapacidad deben ponerse en contacto con John Tucker al 855.712.8530 o por correo electrónico al JTucker2@azdot.gov. Las solicitudes deben hacerse lo más antes posible para asegurar que el Estado tenga la oportunidad de hacer los arreglos necesarios.

303

Loop 303, MC 85 to Van Buren Street

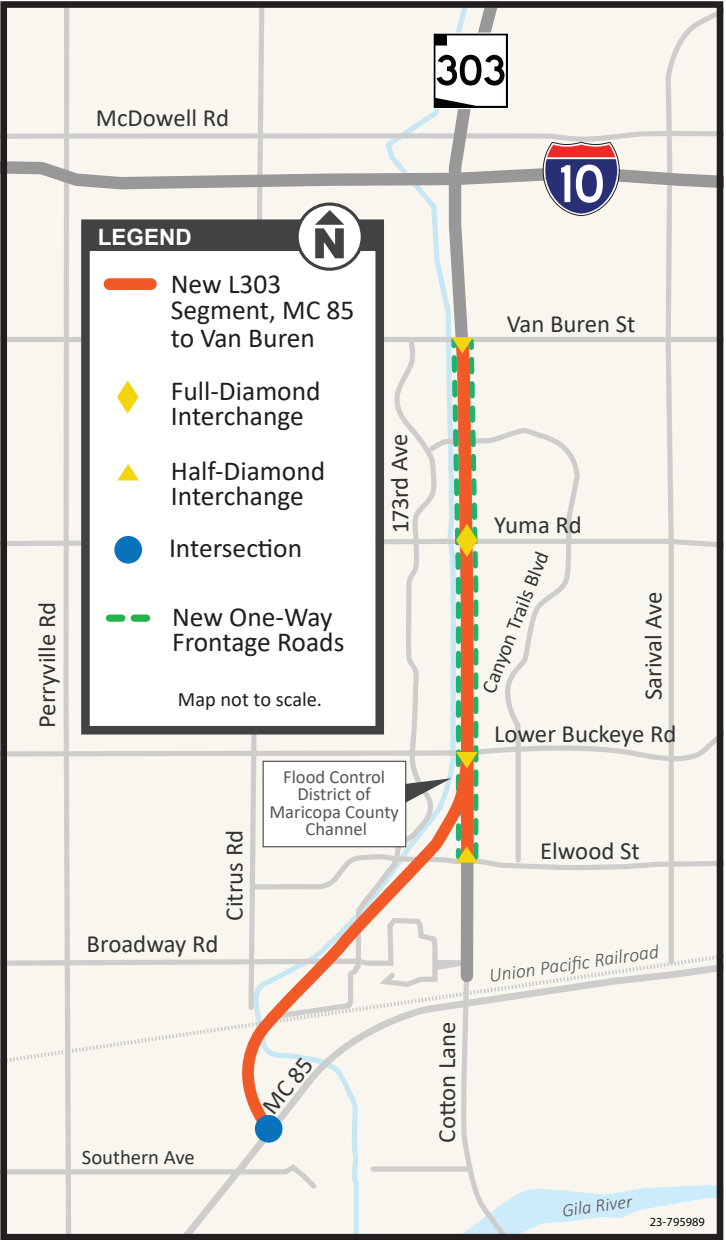
OVERVIEW

The Arizona Department of Transportation, in conjunction with the City of Goodyear and Maricopa Association of Governments (MAG) is currently designing a project to construct a new elevated four-mile segment of Loop 303 in Goodyear, from MC 85 to Van Buren Street.

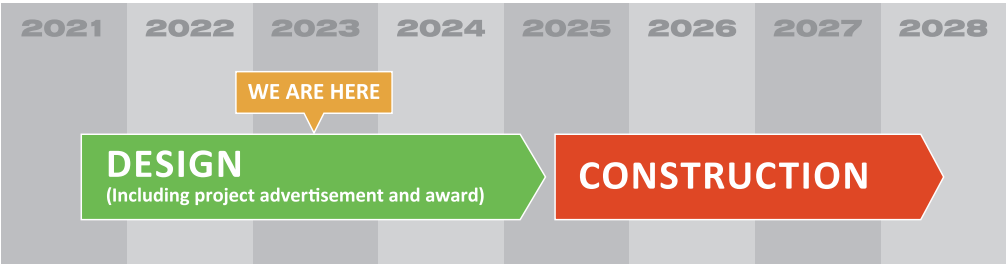
The existing street network will be unable to accommodate the anticipated growth in the area. Without a higher-capacity facility, traffic congestion in the Cotton Lane corridor will continue to worsen. This project will help address travel demand projected to 2050 and beyond while improving traffic capacity and safety and expanding regional connectivity of the transportation network to accommodate future growth.

PROJECT ELEMENTS

- ▶ Constructing three general-purpose lanes in each direction from Van Buren Street to Lower Buckeye Road
- ▶ Constructing two general-purpose lanes in each direction from Lower Buckeye Road to MC 85
- ▶ Constructing one-way frontage roads between Elwood and Van Buren streets
- ▶ Constructing a full-diamond traffic interchange at Yuma Road
- ▶ Constructing half-diamond traffic interchanges at Van Buren Street, Lower Buckeye Road and Elwood Street
- ▶ Constructing a signalized intersection at MC 85
- ▶ Adding new sound walls where warranted
- ▶ Installing new lighting, signage and other features



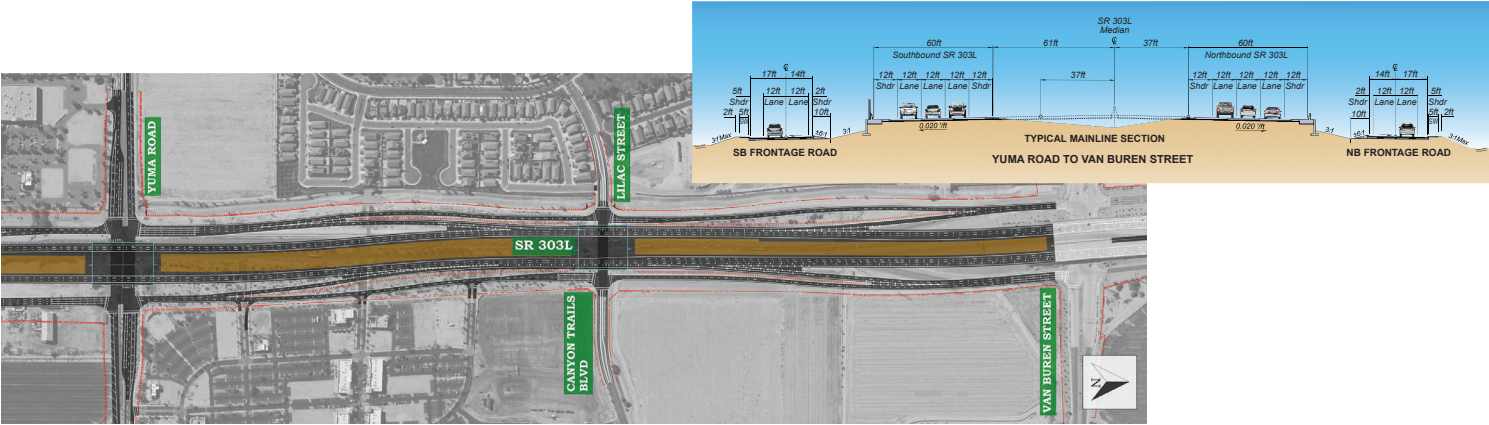
PROJECT TIMELINE*



The following maps show the project design in one-mile segments.

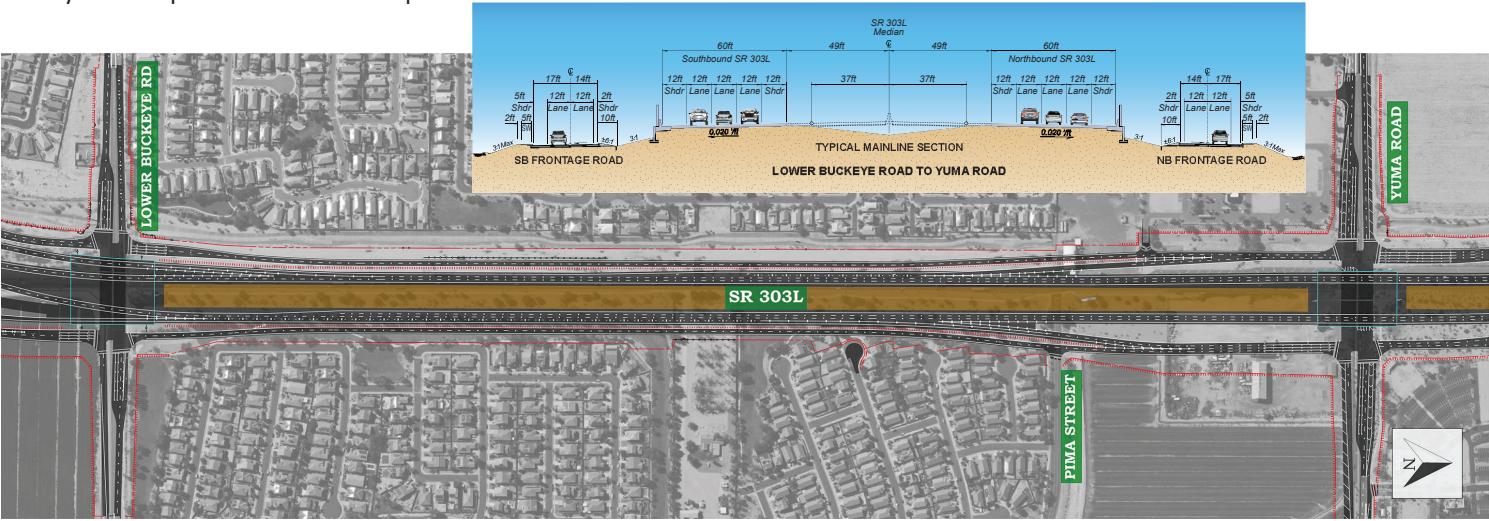
VAN BUREN STREET TO YUMA ROAD

The existing interchange ramps on the south side of Van Buren Street will be reconstructed. This new section of Loop 303 will be elevated with a grade separation bridge above Canyon Trails Boulevard. The freeway will have three 12-foot lanes in each direction with 12-foot inside and outside shoulders. There will be a large center median to accommodate future expansion of Loop 303. The frontage roads will each have two 12-foot lanes with a 2-foot inside shoulder and a 5-foot outside shoulder. Speed limit will be 65 mph.



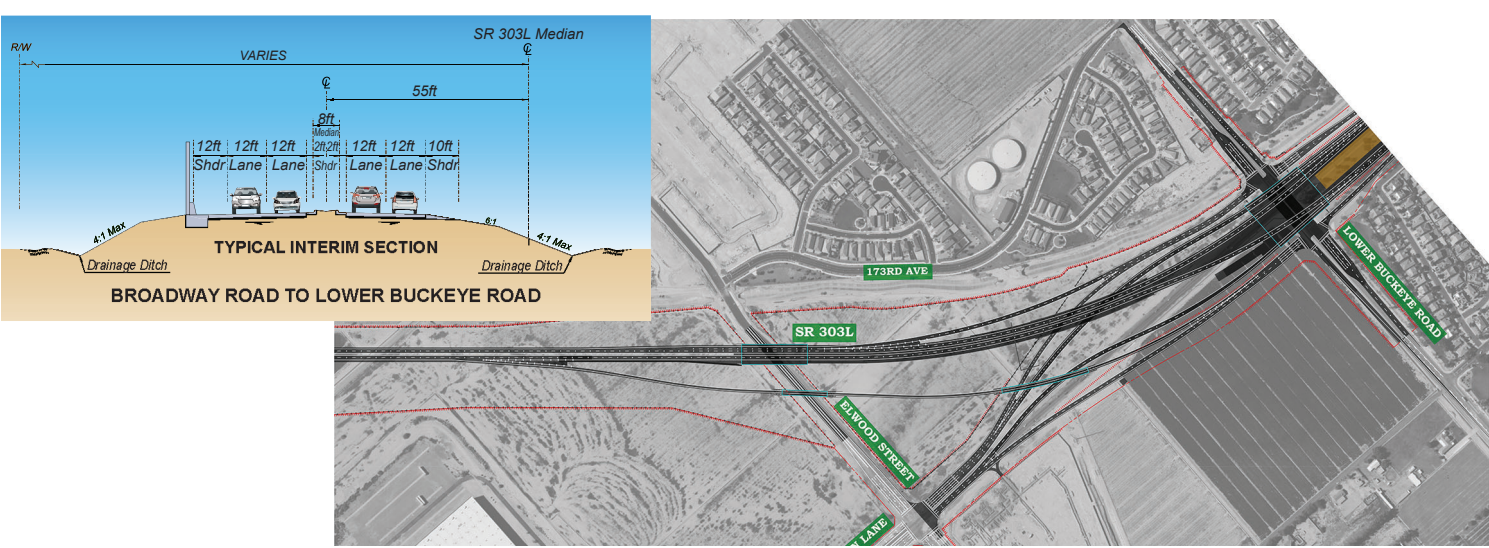
YUMA ROAD TO LOWER BUCKEYE ROAD

Between Lower Buckeye and Yuma roads the freeway configuration is the same as the section to the north with three lanes in each direction and two-lane frontage roads. This segment will also have retaining walls and sound walls on both sides of the freeway just south of Lower Buckeye Road. Speed limit will be 65 mph.



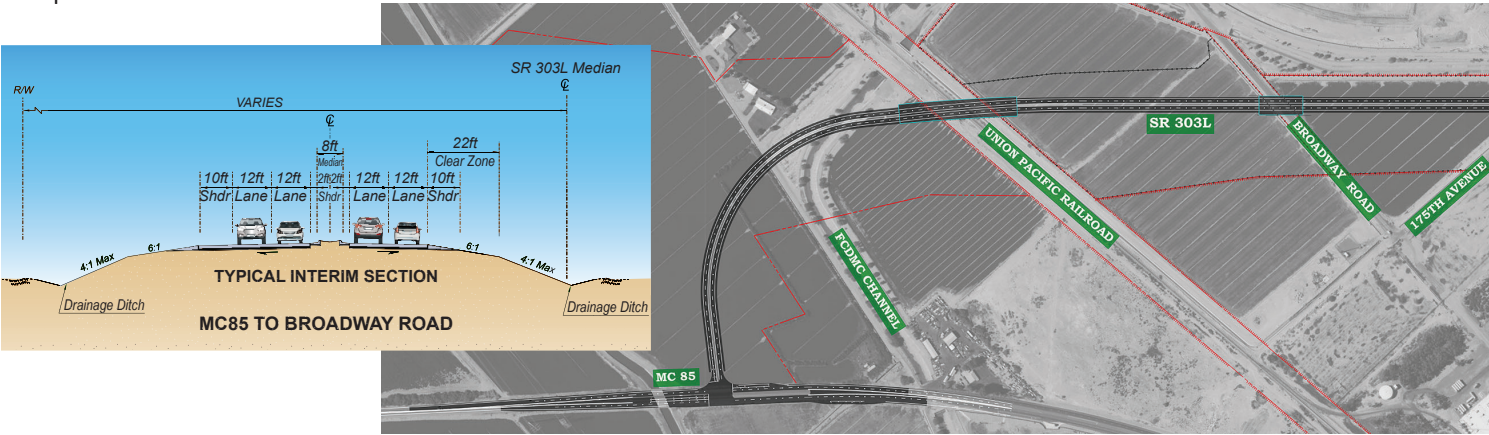
LOWER BUCKEYE ROAD TO BROADWAY ROAD

South of Lower Buckeye Road the roadway transitions down from the freeway section to the arterial section, that includes two 12-foot lanes in each direction with a 12-foot shoulder on the southbound lanes and a 10-foot shoulder on the northbound lanes, as well as 2-foot inside shoulders. This section will have an 8-foot raised median with curb. There will be a sound wall along the west side of the road down to Broadway Road. This section was designed to be an interim roadway until the future expansion of Loop 303. Speed limit will be 45 mph.



BROADWAY ROAD TO MC 85

This segment will have the same configuration as the segment to the north up to Lower Buckeye Road. It too will be an interim segment of roadway until the future expansion of Loop 303 development of the system interchange with the future State Route 30. Speed limit will be 45 mph.



Loop 303,
MC 85 to Van
Buren Street
- Sound Wall
Locations

New sound walls
shown in orange.

VAN BUREN ST TO YUMA RD



YUMA RD TO LOWER BUCKEYE RD



LOWER BUCKEYE RD TO MC 85

