

MAINTENANCE UNIT BOUNDARIES

YUMA MAINTENANCE

Supervisor: Ramiro Sandoval 928.317.2124

I-8	MP 0 — 79.86
US 95	MP 0— 0.6, 29.3-70.7
SR 195	MP 5.5 — 27

QUARTZSITE MAINTENANCE

Supervisor: Timothy Mitchell 928.927.6311

I-10	MP 0 — 52
SR 72	MP 13.1 — 49.9
US/SR 95	MP 70.7 — 161.7
US 60	MP 31.26 — 49.56
SR 95 Spur	MP 143.8 — 144.8
SR 95 Spur	MP 158.7 — 159.5

GILA BEND MAINTENANCE

Supervisor: Cameron Mendoza 928.683.2582

I-8	MP 79.87 — 147.6
SR 85	MP 120.3 — 148.5
SR 85 South	MP 0 — 32.51

TONOPAH MAINTENANCE

Supervisor: Sal Mata 602.712.2141

I-10	MP 52— 113.40
SR 85	MP 148.5— 155.04

AKA – THE ADOT WAY



TRAFFIC INCIDENT MANAGEMENT:

QUICK CLEARANCE

FENDER BENDER?

If you're in a minor or non-injury crash and your vehicle is operable, move it out of travel lanes.

Move your vehicle to the side of the road and inspect it there – not in dangerous travel lanes.

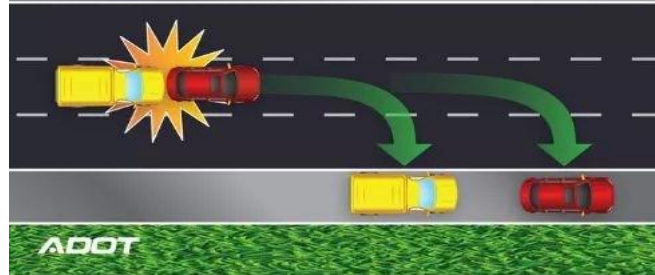
Often, a primary crash leads to a traffic backup and increases the risk of a secondary crash, which can be more severe than the original collision.

Vehicles involved in a non-injury crash that remain operable, according to Arizona law, must be removed from the roadway.

Emergency responders – police, fire, tow truck operators, etc. – need a safe place to work, too. On average, a tow truck operator is struck and killed every six days in the U.S.

Why move your vehicle out of travel lanes?

- Driver Safety
- Traveler Safety
- Responder Safety
- It's the Law! A.R.S. 28-674



DRIVE AWARE
GET THERE >>>



ADOT | Arizona Department of Transportation

SOUTHWEST DISTRICT

April-June 2023

CURRENT CONSTRUCTION PROJECTS

Interstate 8	Sentinel Rest Area
Type of Project:	Rest Area Rehabilitation
Contractor:	Haydon Building Corp
Status:	98% Complete
Contract Amount:	\$7,635,134
Interstate 8	Aztec to County Line
Type of Project:	Pavement Preservation
Contractor:	FNF Construction, Inc.
Status:	0% Complete
Contract Amount:	\$17,478,739
Interstate 10	MP 105.95-Jct. SR 85
Type of Project:	Pavement Rehabilitation
Contractor:	FNF Construction, Inc.
Status:	45% Complete
Contract Amount:	\$18,930,347
Interstate 10	443rd Ave-Wintersburg
Type of Project:	Pavement Preservation
Contractor:	FNF Construction, Inc.
Status:	20% Complete
Contract Amount:	\$28,041,563
US 95	Rifle Range Road-Wellton Mohawk Canal Bridge
Type of Project:	Roadway Widening & Reconstruction
Contractor:	Fisher Sand & Gravel, Co.
Status:	10% Complete
Contract Amount:	\$28,053,208
Interstate 10	Dome Rock Rd-Scaddan
Type of Project:	Pavement Preservation
Contractor:	TBD
Status:	0% Complete
Contract Amount:	\$47,500,000 (Est.)

CURRENT CONSTRUCTION PROJECTS

Interstate 8	Truck Parking Availability
Type of Project:	Truck Parking
Contractor:	TBD
Status:	0% Complete
Contract Amount:	\$4,300,000 (Est.)
Interstate 8	MP 135-Pinal Co. Line
Type of Project:	Pavement Preservation
Contractor:	TBD
Status:	0% Complete
Contract Amount:	\$15,000,000 (Est.)

UPCOMING CONSTRUCTION

PROJECT	ADVERTISE
Interstate 8 Sentinel TI Lighting Install Traffic Interchange Lighting	FY 23
Gila Bend ADA Improvements ADA Improvements	FY 23
Interstate 10 Scaddan- Plomosa Pavement Preservation	FY 24
SR 85S, Gila Bend-Range 4 Rd Spot Repair & Safety Improv.	FY 24

CURRENT MAINTENANCE PROJECTS

PROJECT	DATES
SR 95 MP 110.8 Grouted Riprap	May 2023
B-8 Gila Bend Hydro-vacuuming	May 2023
SR 85S, MP .5-16 Clearing & Grubbing	Ongoing
SR 195 MP 5.5 - 27 Shoulder Build-up	Ongoing



SOUTHWEST DISTRICT

Bruce Fenske	District Engineer
Jon Fell	Assistant District Engineer
Vacant	Senior Resident Engineer
John Murillo & Micah Hannam	Resident Engineer (Consultant)
Danny Soliz	Operations Superintendent
Stephanie Dyer	Community Relations Manager
Gerry Ramirez	Permits Supervisor
Frank Felix	Traffic Analyst
Kalimur Rahman	Environmental Coordinator

District Office

2243 E Gila Ridge Road | Yuma, AZ 85365
Phone: 928.317.2101 Fax: 928.317.2107

Construction Office

2243 E. Gila Ridge Road | Yuma, AZ 85365
Phone: 928.317.2150

Southwest District Contacts

azdot.gov/business/district-contacts/contacts-south-west-district

Media Line 1.800.949.8057

Project Information Hotline 1.855.712.8530

ADOT Natural Resources Hotline 1.888.822.2604

AZ 5-1-1

Updates Arizona's Road Conditions Every 5 Minutes

az511.com Click on 'Closures'

Or Call: 1.888.411.ROAD (7623)



DOWNLOAD THE ADOT APP

The App is a free download available on both iTunes App Store and Google Play

