

ARIZONA

MOTOR VEHICLE CRASH FACTS

2020



2020 Motor Vehicle Crash Facts for the State of Arizona

*Prepared by:
The Arizona Department of Transportation
Transportation Systems Management and Operations*

Publication Date: July 27, 2021



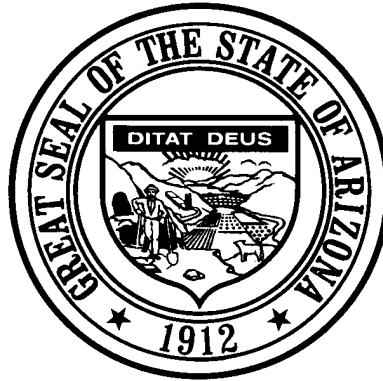
This publication is an annual statistical review of the motor vehicle crashes in the State of Arizona for the calendar year 2020. The results are compiled from Arizona Traffic Crash Reports submitted to the Arizona Department of Transportation by state, county, city, tribal, and other law enforcement agencies. Specific inquiries regarding the data in this report should be directed to:

**The Arizona Department of Transportation
Transportation Systems Management and Operations
Traffic Safety Section
1615 West Jackson Street
Phoenix, AZ 85007**

E-mail: azcrashfacts@azdot.gov

In order to provide the most current information, preliminary data is utilized when necessary. For this reason, previous or future reports may differ slightly and we encourage you to refer to the latest issue of Motor Vehicle Crash Facts.

This issue as well as previous issues of this publication may be viewed and downloaded from the ADOT Web Site:
www.azdot.gov/crashfacts



Douglas A. Ducey
Governor

Arizona Department of Transportation

John S. Halikowski
Director

State Transportation Board

Steve Stratton – District 4
Chairman

Jesse Thompson – District 5
Vice Chairman

Members

Jackie Meck – District 1
Jenn Daniels – District 1
Ted Maxwell – District 2
Richard Searle – District 3
Gary Knight – District 6

OVERVIEW

Section 1: – Highlights and Historical Trends	1
Section 2: – Geographic Location.....	9
Section 3: – Crash Descriptions	17
Section 4: – Safety Devices	23
Section 5: – Motor Vehicle and Driver Descriptions	26
Section 6: – Alcohol Related Crashes.....	33
Section 7: – Pedestrian and Pedalcyclist Crashes	42
Section 8: – Motorcycle (MC) Crashes	48
Acknowledgements	58

2020 Arizona Crash Facts Summary

Table of Contents

Section 1: Highlights and Historical Trends	1
Arizona Crash Facts Summary and Comparison.....	2
Arizona at a Glance – 2020.....	2
Licensed Drivers, Motor Vehicle Registration and Crash History in Arizona.....	3
Historical Trends – VMT and Rates.....	3
Statewide Economic Loss Due to Motor Vehicle Crashes.....	4
State Adjusted Crash Costs.....	4
Traffic Crashes in Arizona by Year.....	5
Victims of Motor Vehicle Crashes.....	6
Suspected Serious Injuries by Person Type 2016-2020.....	6
Young Drivers (age 15-24) killed in crashes 2016-2020.....	6
State Highway System (SHS) vs Local Road Fatalities.....	7
Arizona Fatality Rate vs. Injury Rate.....	7
Traffic Fatalities by Geographic Region.....	7
Traffic Injuries by Geographic Region.....	7
Holiday Crash Statistics.....	8
Section 2: Geographic Location	9
Crash Severity by First Harmful Event Statewide.....	10
Crashes by County.....	10
Crash Severity by First Harmful Event in Urban Areas.....	11
Crash Severity by First Harmful Event in Rural Areas.....	11
Analysis by Jurisdiction.....	12
Total Fatalities by County for 2019 and 2020.....	15
Urban and Rural Crashes by Day of Week.....	16
Urban and Rural Fatal Crashes by Day of Week.....	16
All Urban and Rural Crashes vs. Urban and Rural Fatal Crashes by Month.....	16
Section 3: Crash Descriptions	17
Manner of Collision in Multi-Vehicle Crashes.....	18
Lighting Conditions.....	18
Weather Conditions.....	18
Road Surface Conditions.....	19
Roadway Grade.....	19
Roadway Alignment.....	19
All Crashes vs. Fatal Crashes by Time of Day - Weekdays.....	20
All Crashes vs. Fatal Crashes by Time of Day - Weekends.....	20
Crashes by Day of Week.....	21
Fatal Crashes by Day of Week.....	21
All Crashes vs. Fatal Crashes by Month.....	21
Crashes by Hour and Day of Week.....	22
Section 4: Safety Devices	23
Child Safety Device Usage (less than five years old).....	24
Driver Safety Device Usage.....	24
Passenger Safety Device Usage.....	24
Driver Safety Device Usage by Gender.....	25
Driver Safety Device Usage by Age.....	25
Section 5: Motor Vehicle and Driver Descriptions	26
Arizona Motor Vehicle Registrations.....	27
Motor Vehicle Crash Involvement by Vehicle Type.....	27
Hit and Run Drivers Involved in Crashes.....	28

2020 Arizona Crash Facts Summary

Gender of Drivers Involved in Crashes.....	28
License Status of Drivers Involved in Crashes.....	28
Passengers Killed and Injured by Age and Gender.....	28
Drivers and Passengers Killed and Injured by Vehicle Type.....	29
Drivers Killed and Injured by Age and Gender.....	29
Licensed Drivers in Arizona by Age.....	30
Driver Involvement by Age.....	30
Driver Violations.....	31
Driver Physical Condition.....	31
Distracted Driving Behavior.....	32
Secondary Crashes.....	32
Section 6: Alcohol Related Crashes.....	33
Economic Loss Due to Alcohol Related Crashes in Arizona for 2020.....	34
Alcohol Related Crash History.....	34
Manner of Collision in Alcohol Related Crashes.....	34
Alcohol Related Crashes by First Harmful Event.....	35
Alcohol Related Crashes by Vehicle Type.....	35
Lighting Conditions in Alcohol Related Crashes.....	36
Road Surface Conditions in Alcohol Related Crashes.....	36
Gender of Drivers Involved in Alcohol Related Crashes.....	36
Driver Involvement by Age in Alcohol Related Crashes.....	37
When Alcohol Related Crashes Occurred in 2020.....	37
Safety Device Usage for Drinking Drivers.....	37
Persons Killed and Injured in Alcohol Related Crashes.....	38
Alcohol Related Crashes by County.....	38
All Alcohol Related Crashes vs. Fatal Alcohol Related Crashes by Day of Week.....	39
All Alcohol Related Crashes vs. Fatal Alcohol Related Crashes by Month.....	39
All Alcohol Related Crashes vs. Fatal Alcohol Related Crashes - Weekdays.....	40
All Alcohol Related Crashes vs. Fatal Alcohol Related Crashes - Weekends.....	40
Alcohol Related Crashes by Hour and Day of Week.....	41
Section 7: Pedestrian and Pedalcyclist Crashes.....	42
Pedestrians Killed and Injured By Age and Gender.....	43
Pedestrian Crashes by Geographic Location.....	43
Pedestrian Crash History.....	43
Pedestrians Killed by Age and Action.....	44
Pedestrians Injured by Age and Action.....	44
Pedestrian Physical Condition in Motor Vehicle Crashes.....	44
Lighting Conditions in Pedestrian Crashes.....	45
Weather Conditions in Pedestrian Crashes.....	45
Pedalcyclists Killed and Injured by Age and Gender.....	45
Pedalcycle Crashes by Geographic Location.....	46
Pedalcycle Crash History.....	46
Lighting Conditions in Pedalcyclist Crashes.....	46
Weather Conditions in Pedalcyclist Crashes.....	46
Pedestrian Crashes by County.....	47
Pedalcyclist Crashes by County.....	47
Section 8: Motorcycle (MC) Crashes.....	48
MC Fatalities by Year.....	49
MC Registrations in Arizona.....	49
Fatality Rate per Registered MC.....	49
Percent of MC Crashes to All Crashes.....	49
MC Crashes by First Harmful Event.....	50
Lighting Conditions in MC Crashes.....	50
Road Surface Conditions in MC Crashes.....	50
MC Crashes by Geographic Location.....	51

2020 Arizona Crash Facts Summary

Operator Involvement by Age in MC Crashes.....	51
MC Operator Physical Condition.....	51
Helmet Use by Gender.....	52
MC Operator’s Helmet Use.....	52
MC Passenger’s Helmet Use.....	52
MC Operators and Passengers Killed and Injured.....	53
MC Operator Violations.....	53
All MC Crashes vs. Fatal MC Crashes by Time of Day - Weekdays.....	54
All MC Crashes vs. Fatal MC Crashes by Time of Day - Weekends.....	54
All MC Crashes vs. Fatal MC Crashes by Day of Week.....	55
Alcohol Related MC Crashes vs. Fatal Alcohol Related MC Crashes by Day of Week.....	55
MC Crashes by Hour and Day of Week.....	56
MC Crashes by County.....	57
Manner of Collision in MC Crashes.....	57
Acknowledgements.....	58

2020 Arizona Crash Facts Summary

BREAKDOWN OF ALL CRASHES IN ARIZONA

TOTAL	98,778
FATAL	970
INJURY	28,610
PROPERTY DAMAGE ONLY	69,198
URBAN	85,244
RURAL	13,534
ALCOHOL RELATED	4,506
PEDESTRIAN	1,523
PEDALCYCLE	830
MOTORCYCLE	2,317
SINGLE VEHICLE	17,766
MULTI-VEHICLE	81,012

BREAKDOWN OF FATAL CRASHES IN ARIZONA

TOTAL	970
ALCOHOL RELATED	163
URBAN	587
RURAL	383
SINGLE VEHICLE	314
MULTI-VEHICLE	656
ALCOHOL RELATED SINGLE VEHICLE	46
ALCOHOL RELATED MULTI-VEHICLE	117

BREAKDOWN OF PERSONS KILLED AND INJURED

TYPE	KILLED	INJURED
IN ALL CRASHES	1,057	41,350
IN ALCOHOL RELATED CRASHES	181	2,863
IN URBAN CRASHES	624	35,155
IN RURAL CRASHES	433	6,195
IN SPEED RELATED CRASHES*	337	15,839
IN LANE DEPARTURE CRASHES	648	13,212
IN CRASHES ON THE STATE HIGHWAY SYSTEM	388	13,411
IN CRASHES ON LOCAL ROADS	669	27,939
USING SAFETY DEVICE	287	33,239
NOT USING SAFETY DEVICE	313	2,607
DRIVERS AGE 24 OR YOUNGER	97	6,570
DRINKING DRIVERS AGE 24 OR YOUNGER	11	317

BREAKDOWN OF CRASHES BY TIME

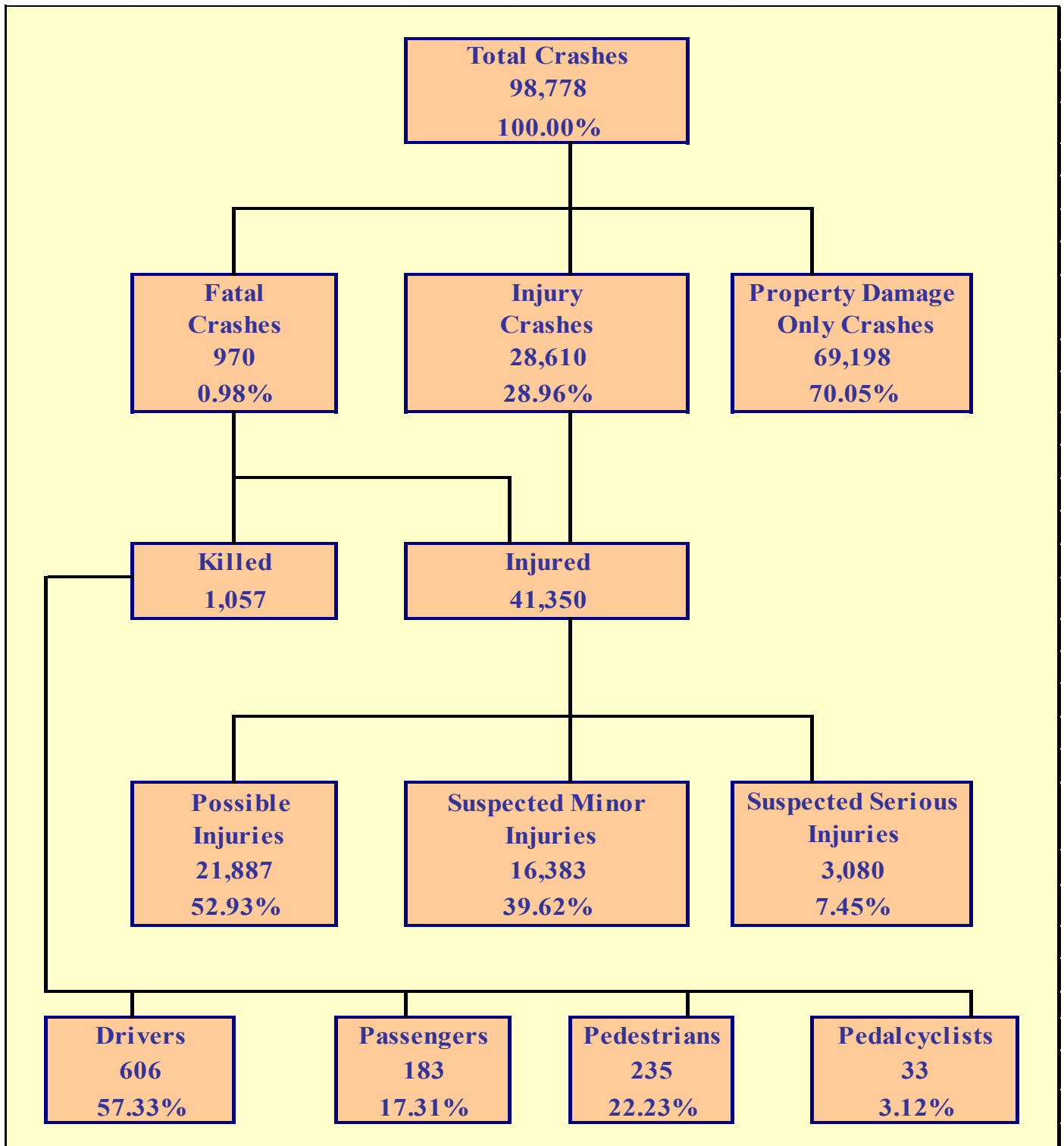
PEAK MONTH FOR ALL CRASHES	JANUARY
PEAK DAY FOR ALL CRASHES	FRIDAY
PEAK HOUR FOR ALL CRASHES	4 PM - 5 PM
PEAK MONTH FOR FATAL CRASHES	FEBRUARY AND SEPTEMBER
PEAK DAY FOR FATAL CRASHES	SATURDAY
PEAK HOUR FOR FATAL CRASHES	7 PM - 8 PM AND 9 PM - 10 PM
PEAK DATE FOR ALL CRASHES IN 2020	FRIDAY FEBRUARY 14TH (502 CRASHES)
PEAK DATE FOR FATAL CRASHES IN 2020	5 DAYS TIED WITH 7 CRASHES (2/21, 9/19, 10/28, 11/3, 12/13)
PEAK HOUR FOR MOTORCYCLE CRASHES	5 PM - 6 PM
PEAK HOUR FOR ALCOHOL RELATED CRASHES	6 PM - 7 PM
PEAK HOUR FOR PEDESTRIAN CRASHES	7 PM - 8 PM
PEAK HOUR FOR PEDALCYCLE CRASHES	4 PM - 5 PM

*Note: These numbers represent the total number of fatalities and injuries in crashes where the violation "speed too fast for conditions" or "exceeded lawful speed" was marked on the crash report.

2020 Arizona Crash Facts Summary

Fatalities in Arizona since 1925

Year	Total Fatalities	Year	Total Fatalities
1925	76	1973	975
1926	120	1974	751
1927	147	1975	670
1928	130	1976	739
1929	157	1977	933
1930	190	1978	1,027
1931	159	1979	1,029
1932	166	1980	947
1933	154	1981	916
1934	205	1982	724
1935	217	1983	675
1936	244	1984	869
1937	258	1985	893
1938	200	1986	1,007
1939	215	1987	939
1940	228	1988	944
1941	272	1989	879
1942	230	1990	869
1943	168	1991	816
1944	180	1992	811
1945	283	1993	799
1946	236	1994	904
1947	256	1995	1,035
1948	301	1996	997
1949	281	1997	950
1950	325	1998	981
1951	415	1999	1,028
1952	396	2000	1,037
1953	397	2001	1,057
1954	402	2002	1,132
1955	358	2003	1,125
1956	486	2004	1,159
1957	461	2005	1,193
1958	509	2006	1,301
1959	517	2007	1,071
1960	513	2008	938
1961	510	2009	806
1962	510	2010	759
1963	513	2011	827
1964	588	2012	821
1965	550	2013	849
1966	643	2014	774
1967	574	2015	897
1968	695	2016	952
1969	750	2017	998
1970	762	2018	1,011
1971	755	2019	980
1972	812	2020	1,057



Section 1: – Highlights and Historical Trends

Table 1 – 1

Arizona Crash Facts Summary and Comparison

Category	2019	2020	Percent Change
Total Crashes	130,366	98,778	-24.23%
Total Fatalities	980	1,057	7.86%
Total Injuries	54,080	41,350	-23.54%
Alcohol Related Fatalities	258	181	-29.84%
Alcohol Related Injuries	2,999	2,863	-4.53%
Urban Fatalities	583	624	7.03%
Urban Injuries	47,000	35,155	-25.20%
Rural Fatalities	397	433	9.07%
Rural Injuries	7,080	6,195	-12.50%
MC Operator and Passenger Fatalities	170	160	-5.88%
MC Operator and Passenger Injuries	2,250	1,921	-14.62%
Pedestrians Fatalities	218	235	7.80%
Pedestrians Injuries	1,716	1,351	-21.27%
Pedalcyclist Fatalities	30	33	10.00%
Pedalcyclist Injuries	1,262	812	-35.66%
Millions of vehicle miles traveled (VMT)	70,281	65,574	-6.70%
Fatalities per 100 million VMT	1.39	1.61	15.60%
Injuries per 100 million VMT	76.95	63.06	-18.05%

Arizona at a Glance – 2020

- Approximately **2.89** persons were killed each day.
- One person was killed every **8** hours and **17** minutes.
- There were **113** persons injured every day.
- One person was injured every **12** minutes and **45** seconds.
- Alcohol Related crashes accounted for **4.56%** of all crashes and **16.80%** of all fatal crashes.
- Of all alcohol related crashes, **82.65%** occurred in Urban areas and **17.35%** occurred in Rural areas, while **68.71%** of all alcohol related fatal crashes occurred in Urban areas and **31.29%** occurred in Rural areas.
- Single vehicle crashes accounted for **17.99%** of all crashes and **32.37%** of all fatal crashes.
- Of all Pedestrian crashes, **15.23%** were fatal while **3.98%** of Pedalcycle crashes were fatal.
- Crashes which occurred during daylight hours (6:00 a.m. to 6:00 p.m.) accounted for **70.0%** of all crashes.
- Motor vehicle crashes resulted in **\$17.193** billion in economic losses to Arizona.
- Children age 14 and younger accounted for **41** fatalities and **2,104** injuries in motor vehicle crashes.

Section 1: – Highlights and Historical Trends

Table 1 – 2
Licensed Drivers, Motor Vehicle Registration
and Crash History in Arizona

Calendar Year	Total Crashes	Fatal Crashes	Injury Crashes	Property Damage Only Crashes	Total Persons Killed	Total Persons Injured	Total Licensed Drivers	Total Registered Vehicles
2006	143,504	1,126	45,395	96,983	1,301	70,013	4,091,789	4,748,957
2007	141,193	952	43,560	96,681	1,071	66,062	4,212,393	4,848,162
2008	120,557	843	37,515	82,199	938	56,539	4,360,711	4,842,188
2009	107,149	709	33,506	72,934	806	50,809	4,434,719	4,787,350
2010	106,900	695	33,419	72,786	759	50,463	4,537,653	4,805,904
2011	103,958	756	33,223	69,979	827	49,856	4,634,405	4,855,014
2012	103,940	738	33,595	69,607	821	50,089	4,736,517	4,969,620
2013	107,576	782	34,137	72,657	849	50,440	4,826,903	5,130,780
2014	109,883	709	34,589	74,585	774	51,114	4,922,676	5,300,980
2015	117,121	811	36,371	79,939	897	53,922	5,025,811	5,487,058
2016	127,345	856	38,776	87,713	952	57,003	5,135,262	5,677,208
2017	127,858	917	38,103	88,838	998	55,938	5,221,403	5,843,368
2018	127,747	918	36,710	90,119	1,011	53,679	5,308,307	6,009,850
2019	130,366	909	37,103	92,354	980	54,080	5,375,341	6,167,481
2020	98,778	970	28,610	69,198	1,057	41,350	5,772,928	6,356,220

Table 1 – 3
Historical Trends – VMT and Rates

Calendar Year	Arizona Fatality Rate	Arizona Injury Rate	Arizona Traffic Fatalities	Estimated Motor Vehicle Miles Traveled	Arizona Fatal Crash Rate
2016	1.45	86.89	952	65,606	1.30
2017	1.53	85.97	998	65,069	1.41
2018	1.53	81.15	1,011	66,145	1.39
2019	1.39	76.95	980	70,281	1.29
2020	1.61	63.06	1,057	65,574	1.48

Vehicle miles traveled are shown in million miles and rates per 100 million miles

Section 1: – Highlights and Historical Trends

Statewide Economic Loss Due to Motor Vehicle Crashes

Fatalities	\$10,057,747,147
Suspected Serious Injuries	\$1,695,536,920
Suspected Minor Injuries	\$2,443,229,556
Possible Injuries	\$2,257,534,615
Property Damage Only	\$739,034,640
TOTAL	\$17,193,082,878

Table 1 – 4

Estimated Economic Loss by County

County	Cost of Traffic Crashes			
	Fatalities	Injuries	PDO	Total
Apache	\$ 228,368,904	\$ 36,942,187	\$ 2,467,080	\$ 267,778,171
Cochise	\$ 237,884,275	\$ 72,234,969	\$ 6,632,280	\$ 316,751,524
Coconino	\$ 409,160,953	\$ 169,203,551	\$ 18,711,360	\$ 597,075,864
Gila	\$ 218,853,533	\$ 87,695,516	\$ 6,258,480	\$ 312,807,529
Graham	\$ 142,730,565	\$ 30,505,950	\$ 2,338,920	\$ 175,575,435
Greenlee	\$ 0	\$ 5,722,703	\$ 523,320	\$ 6,246,023
La Paz	\$ 161,761,307	\$ 34,992,258	\$ 2,445,720	\$ 199,199,285
Maricopa	\$ 4,681,562,532	\$ 4,230,621,476	\$ 546,324,720	\$ 9,458,508,728
Mohave	\$ 532,860,776	\$ 229,270,174	\$ 19,565,760	\$ 781,696,710
Navajo	\$ 361,584,098	\$ 81,249,831	\$ 8,704,200	\$ 451,538,129
Pima	\$ 1,541,490,102	\$ 672,747,389	\$ 60,342,000	\$ 2,274,579,491
Pinal	\$ 570,922,260	\$ 281,309,447	\$ 24,179,520	\$ 876,411,227
Santa Cruz	\$ 66,607,597	\$ 10,149,247	\$ 1,783,560	\$ 78,540,404
Yavapai	\$ 608,983,744	\$ 279,750,607	\$ 24,179,520	\$ 912,913,871
Yuma	\$ 294,976,501	\$ 173,905,786	\$ 14,578,200	\$ 483,460,487
TOTALS	\$ 10,057,747,147	\$ 6,396,301,091	\$ 739,034,640	\$ 17,193,082,878

Table 1 – 5

State Adjusted Crash Costs

1.	Fatality	\$9,515,371
2.	Suspected Serious Injury	\$550,499
3.	Suspected Minor Injury	\$149,132
4.	Possible Injury	\$103,145
5.	Property Damage Only	\$10,680

Source: www.safety.fhwa.dot.gov/hsip/docs/fhwasa17071.pdf

Section 1: – Highlights and Historical Trends

Traffic Crashes in Arizona by Year

Chart 1 – 1
Total Crashes

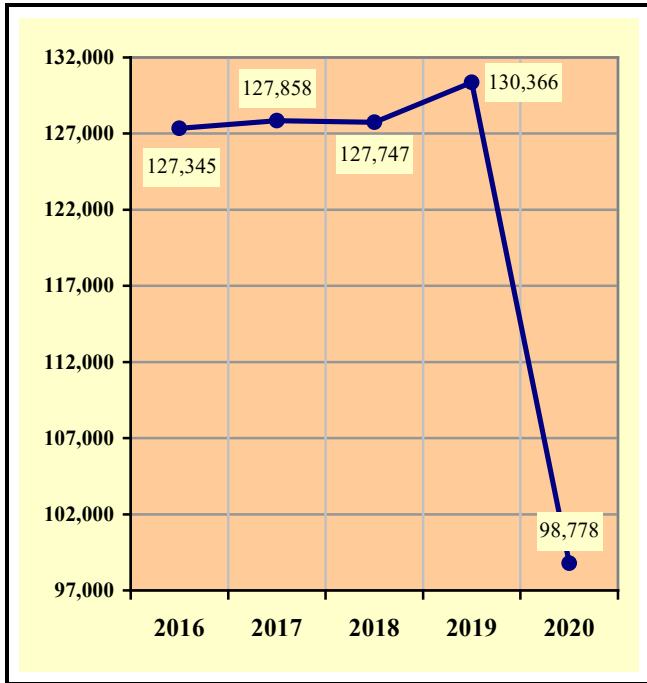


Chart 1 – 2
Fatal Crashes

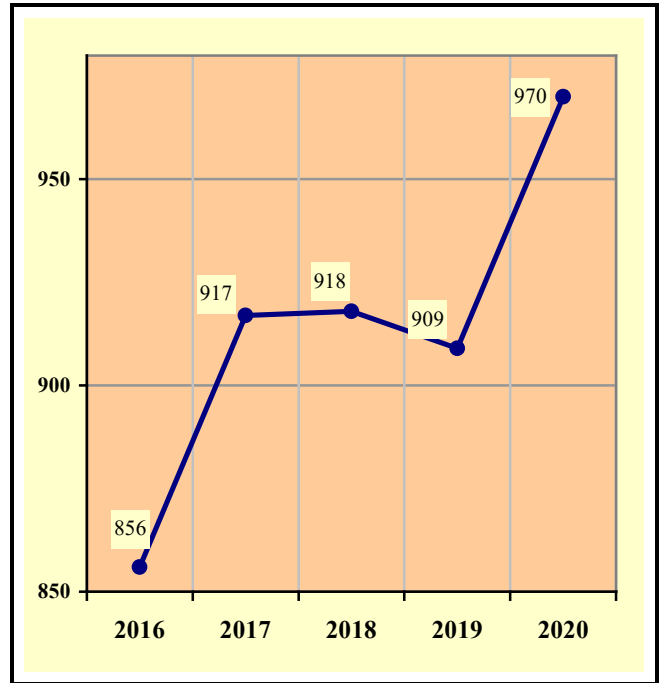


Chart 1 – 3
Injury Crashes

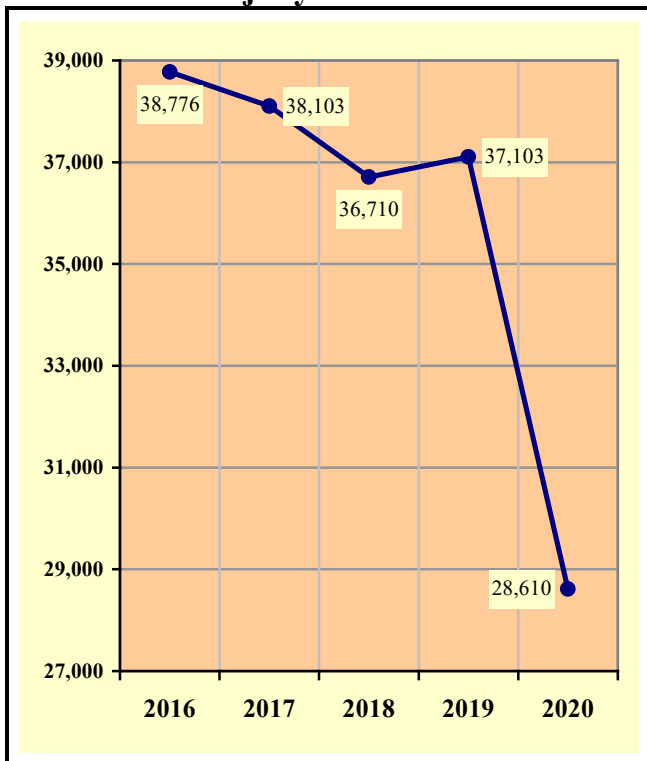
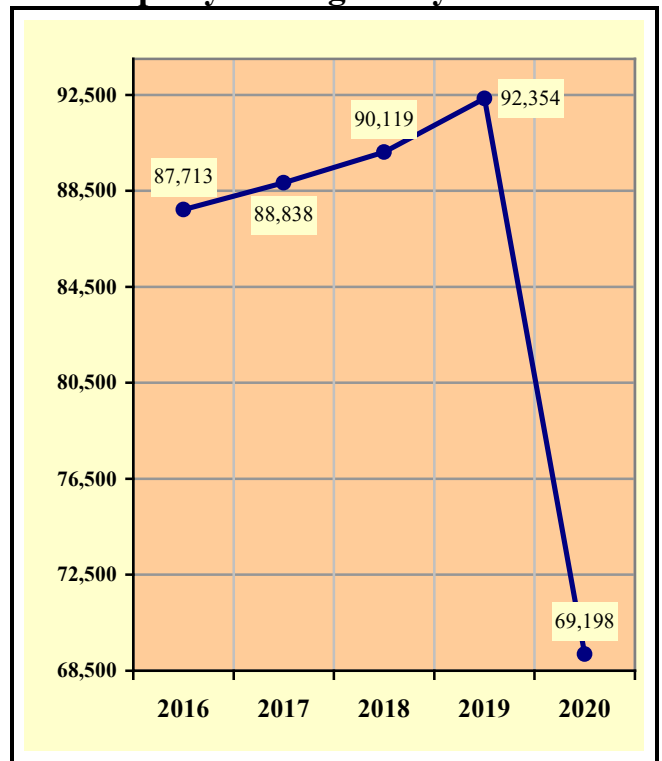


Chart 1 – 4
Property Damage Only Crashes



Section 1: – Highlights and Historical Trends

Table 1 – 6

Victims of Motor Vehicle Crashes

Age of Victim	Persons Killed				Persons Injured			
	Total	Male	Female	Gender Unknown	Total	Male	Female	Gender Unknown
0-4	11	8	3	0	529	283	246	0
5-9	12	7	5	0	688	326	362	0
10-14	18	5	13	0	887	449	438	0
15-19	67	47	20	0	3,943	1,939	2,004	0
20-24	102	80	22	0	5,648	2,887	2,761	0
25-34	191	147	44	0	8,621	4,592	4,029	0
35-44	162	114	48	0	5,994	3,123	2,871	0
45-54	109	80	29	0	5,432	2,733	2,699	0
55-64	195	147	48	0	4,567	2,403	2,164	0
65-74	98	74	24	0	2,905	1,476	1,429	0
75 & Older	82	48	34	0	1,688	822	866	0
Unknown	10	7	1	2	448	227	156	65
TOTAL	1,057	764	291	2	41,350	21,260	20,025	65

Table 1 – 7

Suspected Serious Injuries by Person Type 2016-2020

Year	Drivers	Passengers	Pedestrians	Pedalcyclists	Total
2016	2,911	1,053	433	220	4,617
2017	2,646	985	391	185	4,207
2018	2,434	796	387	173	3,790
2019	2,302	785	365	151	3,603
2020	1,986	665	307	122	3,080
TOTAL	12,279	4,284	1,883	851	19,297

Table 1 – 8

Young drivers (age 15-24) killed in crashes 2016-2020

Year	Age of Driver										Total
	15	16	17	18	19	20	21	22	23	24	
2016	2	2	1	13	12	11	9	18	15	14	97
2017	1	0	2	8	9	10	14	18	10	10	82
2018	1	2	4	13	6	12	10	13	12	14	87
2019	0	6	4	9	9	11	13	12	9	9	82
2020	2	6	9	6	12	14	11	13	14	10	97
TOTAL	6	16	20	49	48	58	57	74	60	57	445

Section 1: – Highlights and Historical Trends

Chart 1 – 5

State Highway System (SHS) vs Local Road Fatalities

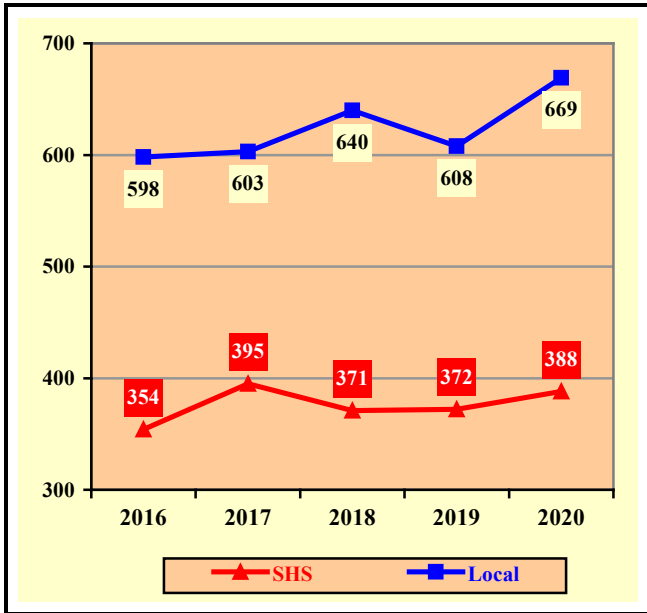


Chart 1 – 6

Arizona Fatality Rate vs. Injury Rate



Chart 1 – 7

Traffic Fatalities by Geographic Region

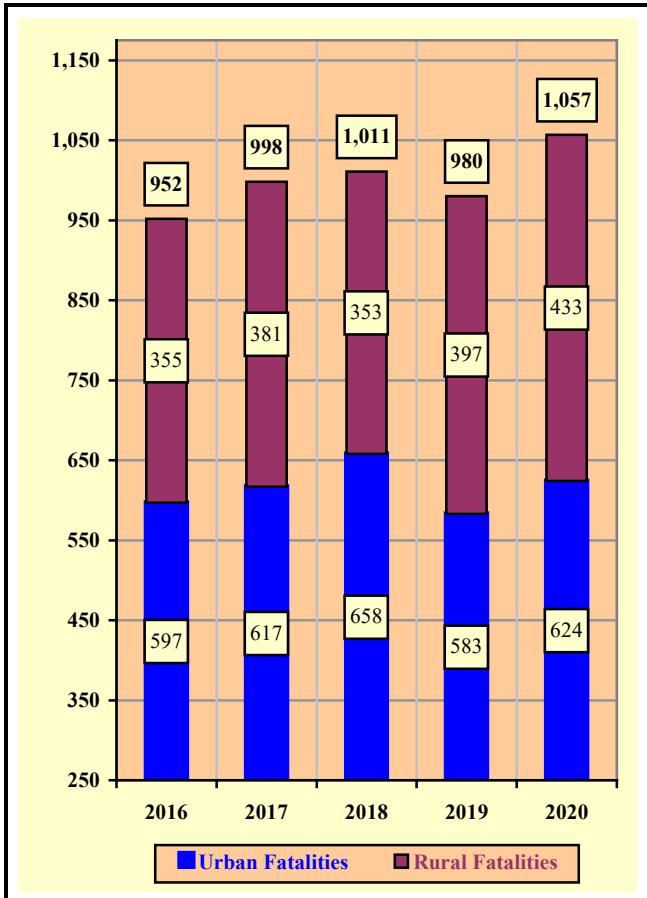
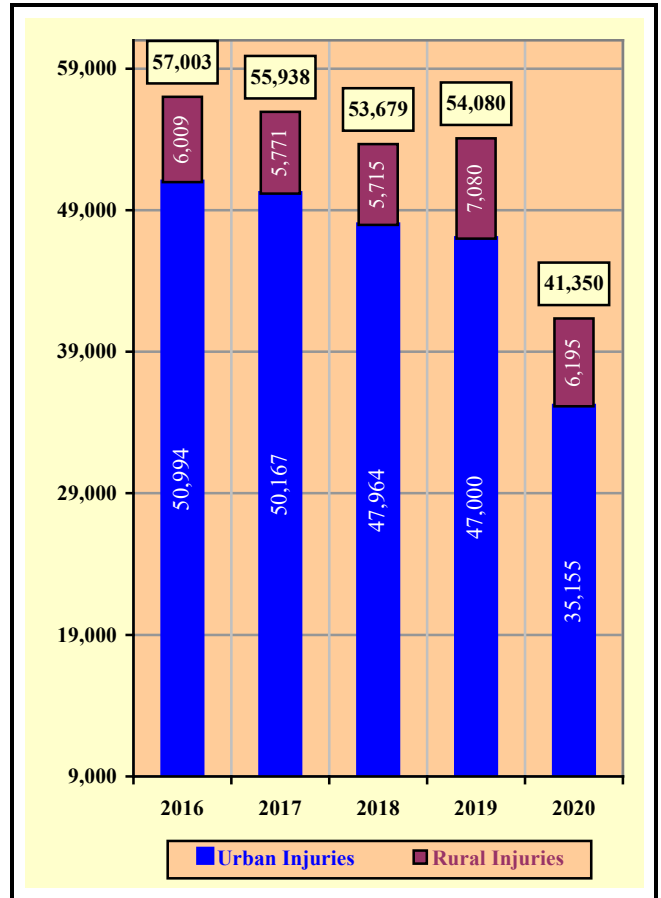


Chart 1 – 8

Traffic Injuries by Geographic Region



Section 1: – Highlights and Historical Trends

Table 1 – 9

Holiday Crash Statistics

Holidays such as Memorial Day, Labor Day, and Thanksgiving are regarded as three or four day weekend holidays for statistical purposes. Holidays such as Christmas, New Year’s Day, and the Fourth of July are celebrated on specific dates; which make the holiday period range from two to five days in length.

Holiday fatality statistics are based on fatal crashes occurring from 6:00 p.m. on the last working day prior to the holiday through 5:59 a.m. the day following the holiday period. Example: Thanksgiving fatalities are counted from Wednesday evening at 6:00 p.m. through 5:59 a.m. of the following Monday.

2020 Holidays	Beginning at 6:00 p.m.	Ending at 5:59 a.m.	Number of Days	Fatal Crashes	Persons Killed	Alcohol Related Fatal Crashes	Alcohol Related Fatalities
New Year’s Day	Tuesday	Thursday	2	2	2	2	2
	12/31/2019	1/2/2020					
Memorial Day	Friday	Tuesday	4	11	11	4	4
	5/22/2020	5/26/2020					
July 4th	Thursday	Monday	4	9	9	1	1
	7/2/2020	7/6/2020					
Labor Day	Friday	Tuesday	4	10	10	2	2
	9/4/2020	9/8/2020					
Thanksgiving Day	Wednesday	Monday	5	12	12	4	4
	11/25/2020	11/30/2020					
Christmas Day	Thursday	Monday	4	10	14	1	3
	12/24/2020	12/28/2020					

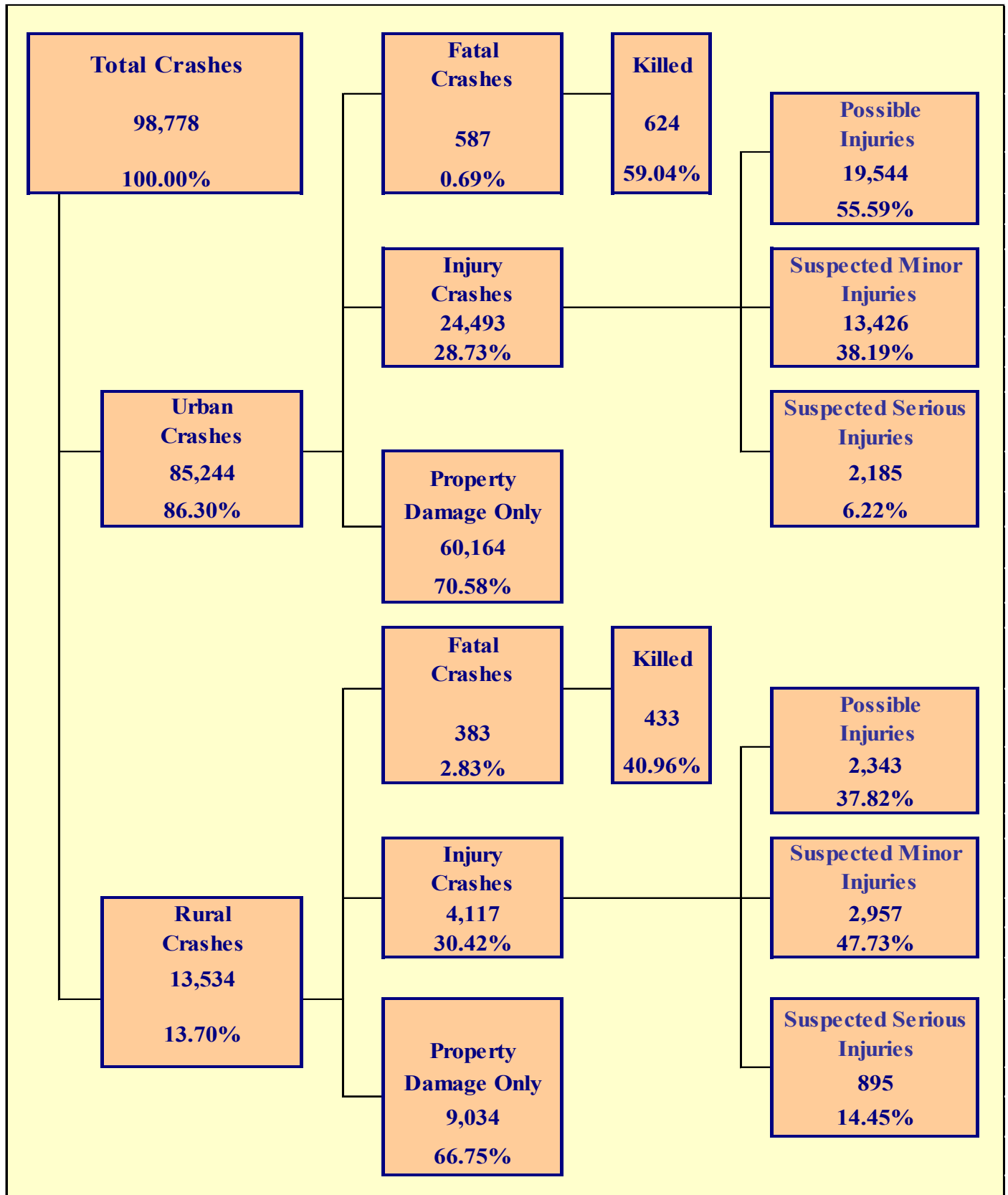
Fatal Crashes by Year	New Year’s Day	Memorial Day	July 4th	Labor Day	Thanksgiving	Christmas Day	Total
2016	6	7	13	7	11	4	48
2017	12	5	4	9	16	10	56
2018	10	7	5	8	8	10	48
2019	8	13	13	12	11	2	59
2020	2	11	9	10	12	10	54

Persons Killed	New Year’s Day	Memorial Day	July 4th	Labor Day	Thanksgiving	Christmas Day	Total
2016	6	7	15	8	11	6	53
2017	13	7	4	9	17	10	60
2018	10	8	5	9	8	11	51
2019	9	13	14	12	11	2	61
2020	2	11	9	10	12	14	58

Number of Days	New Year’s Day	Memorial Day	July 4th	Labor Day	Thanksgiving	Christmas Day	Total
2016	4	4	4	4	5	4	25
2017	4	4	2	4	5	4	23
2018	4	4	2	4	5	5	24
2019	5	4	5	4	5	2	25
2020	2	4	4	4	5	4	23

Section 2

Geographic Location



Section 2: – Geographic Location

Fatal Crashes in Arizona (970) accounted for 0.98% of all crashes, Injury Crashes (28,610) accounted for 28.96%, and Property Damage Only (PDO) Crashes (69,198) accounted for 70.05%.

**Table 2 – 1
Crash Severity by First Harmful Event Statewide**

First Harmful Event Type	Number of Crashes				Number of Persons	
	Total	Fatal	Injury	PDO	Killed	Injured
Collision with Motor Vehicle in Transport	71,602	370	20,374	50,858	424	31,314
Overtuning	1,853	99	1,144	610	107	1,601
Collision with Pedestrian	1,414	212	1,202	0	214	1,274
Collision with Pedalcyclist	805	33	772	0	34	810
Collision with Animal	1,776	2	179	1,595	2	221
Collision with Fixed Object	12,321	194	3,564	8,563	214	4,349
Collision with Non-fixed Object*	5,894	20	674	5,200	22	828
Vehicle Fire or Explosion	362	0	12	350	0	14
Other Non-collision**	562	5	103	454	5	115
Unknown	2,189	35	586	1,568	35	824
TOTAL	98,778	970	28,610	69,198	1,057	41,350
*Includes Collision with Parked Vehicles, Trains, Railway Vehicles, and Work Zone Equipment						
**Includes Vehicle Immersion, Jackknife, and Cargo Loss or Shift						

**Table 2 – 2
Crashes by County**

County	Number of Crashes				Number of Persons	
	Total	Fatal	Injury	PDO	Killed	Injured
Apache	374	24	119	231	24	182
Cochise	909	21	267	621	25	393
Coconino	2,362	39	571	1,752	43	856
Gila	914	21	307	586	23	463
Graham	323	10	94	219	15	147
Greenlee	69	0	20	49	0	31
La Paz	343	16	98	229	17	165
Maricopa	71,611	460	19,997	51,154	492	28,855
Mohave	2,698	51	815	1,832	56	1,211
Navajo	1,162	31	316	815	38	453
Pima	8,841	150	3,041	5,650	162	4,267
Pinal	3,448	57	1,127	2,264	60	1,642
Santa Cruz	209	5	37	167	7	56
Yavapai	3,352	55	1,033	2,264	64	1,514
Yuma	2,163	30	768	1,365	31	1,115
TOTAL	98,778	970	28,610	69,198	1,057	41,350

Section 2: – Geographic Location

**Table 2 – 3
Crash Severity by First Harmful Event in Urban Areas**

First Harmful Event Type	Number of Crashes				Number of Persons	
	Total	Fatal	Injury	PDO	Killed	Injured
Collision with Motor Vehicle in Transport	65,429	247	18,477	46,705	271	28,065
Overturning	550	24	370	156	26	472
Collision with Pedestrian	1,304	167	1,137	0	169	1,205
Collision with Pedalcyclist	732	20	712	0	21	742
Collision with Animal	358	0	35	323	0	42
Collision with Fixed Object	9,231	103	2,564	6,564	109	3,066
Collision with Non-fixed Object*	4,950	12	551	4,387	14	669
Vehicle Fire or Explosion	127	0	3	124	0	4
Other Non-collision**	397	2	58	337	2	66
Unknown	2,166	12	586	1,568	12	824
TOTAL	85,244	587	24,493	60,164	624	35,155
*Includes Collision with Parked Vehicles, Trains, Railway Vehicles, and Work Zone Equipment						
**Includes Vehicle Immersion, Jackknife, and Cargo Loss or Shift						

**Table 2 – 4
Crash Severity by First Harmful Event in Rural Areas**

First Harmful Event Type	Number of Crashes				Number of Persons	
	Total	Fatal	Injury	PDO	Killed	Injured
Collision with Motor Vehicle in Transport	6,173	123	1,897	4,153	153	3,249
Overturning	1,303	75	774	454	81	1,129
Collision with Pedestrian	110	45	65	0	45	69
Collision with Pedalcyclist	73	13	60	0	13	68
Collision with Animal	1,418	2	144	1,272	2	179
Collision with Fixed Object	3,090	91	1,000	1,999	105	1,283
Collision with Non-fixed Object*	944	8	123	813	8	159
Vehicle Fire or Explosion	235	0	9	226	0	10
Other Non-collision**	165	3	45	117	3	49
Unknown	23	23	0	0	23	0
TOTAL	13,534	383	4,117	9,034	433	6,195
*Includes Collision with Parked Vehicles, Trains, Railway Vehicles, and Work Zone Equipment						
**Includes Vehicle Immersion, Jackknife, and Cargo Loss or Shift						

While Urban Crashes in Arizona (85,244) accounted for 86.30% of all crashes, they accounted for 60.52% of all Fatal Crashes (587) occurring in 2020.

While Rural Crashes in Arizona (13,534) accounted for 13.70% of all crashes, they accounted for 39.48% of all Fatal Crashes (383) occurring in 2020.

Section 2: – Geographic Location

Table 2 – 5

Analysis by Jurisdiction

COUNTIES Cities	Number of Crashes				No. of Persons		Alcohol Related		
	Total	Fatal	Injury	PDO	Killed	Injured	Crashes	Killed	Injured
Apache County	330	24	106	200	24	166	25	3	27
Eagar	16	0	5	11	0	8	1	0	1
Springerville	7	0	3	4	0	3	2	0	0
St. Johns	21	0	5	16	0	5	2	0	1
TOTAL	374	24	119	231	24	182	30	3	29

Cochise County	471	17	126	328	21	203	9	2	5
Benson	69	1	17	51	1	26	3	0	1
Bisbee	6	1	2	3	1	2	0	0	0
Douglas	41	0	15	26	0	19	2	0	1
Huachuca City	6	0	1	5	0	2	0	0	0
Sierra Vista	285	1	94	190	1	122	15	0	3
Tombstone	8	0	3	5	0	4	1	0	1
Willcox	23	1	9	13	1	15	0	0	0
TOTAL	909	21	267	621	25	393	30	2	11

Coconino County	1,126	34	299	793	38	473	69	7	62
Flagstaff	1,035	4	230	801	4	328	73	1	36
Fredonia	1	0	0	1	0	0	0	0	0
Williams	80	0	18	62	0	20	4	0	5
Page	57	0	13	44	0	22	13	0	6
Sedona	63	1	11	51	1	13	0	0	0
TOTAL	2,362	39	571	1,752	43	856	159	8	109

Gila County	524	17	193	314	19	281	39	1	45
Globe	133	2	40	91	2	75	18	0	25
Hayden	1	1	0	0	1	0	0	0	0
Miami	13	0	5	8	0	5	2	0	1
Payson	241	1	69	171	1	102	18	0	16
Winkelman	2	0	0	2	0	0	0	0	0
TOTAL	914	21	307	586	23	463	77	1	87

Graham County	137	10	48	79	15	87	13	5	16
Pima	2	0	0	2	0	0	1	0	0
Safford	121	0	26	95	0	36	12	0	11
Thatcher	63	0	20	43	0	24	3	0	0
TOTAL	323	10	94	219	15	147	29	5	27

Greenlee County	54	0	15	39	0	22	1	0	0
Clifton	14	0	5	9	0	9	1	0	3
Duncan	1	0	0	1	0	0	0	0	0
TOTAL	69	0	20	49	0	31	2	0	3

Section 2: – Geographic Location

Table 2 – 5
Analysis by Jurisdiction

COUNTIES Cities	Number of Crashes				No. of Persons		Alcohol Related		
	Total	Fatal	Injury	PDO	Killed	Injured	Crashes	Killed	Injured
La Paz County	274	12	77	185	13	132	26	4	20
Parker	16	0	5	11	0	9	0	0	0
Quartzite	53	4	16	33	4	24	1	0	0
TOTAL	343	16	98	229	17	165	27	4	20

Maricopa County	5,650	69	1,823	3,758	78	2,608	236	12	163
Apache Junction	19	0	7	12	0	12	0	0	0
Avondale	1,157	3	309	845	3	449	37	0	14
Buckeye	688	9	228	451	9	358	39	0	25
Cave Creek	66	0	26	40	0	43	3	0	2
Chandler	2,813	14	793	2,006	17	1,176	131	1	81
El Mirage	368	0	95	273	0	138	25	0	11
Gila Bend	53	3	16	34	3	19	3	0	2
Gilbert	2,064	6	348	1,710	6	450	72	1	29
Glendale	4,642	43	1,196	3,403	47	1,685	189	13	81
Goodyear	1,141	8	321	812	8	478	58	2	34
Mesa	5,443	38	1,580	3,825	39	2,209	241	7	172
Paradise Valley	102	0	28	74	0	36	6	0	2
Peoria	2,307	10	769	1,528	10	1,098	86	0	66
Phoenix	35,274	207	9,311	25,756	220	13,470	1,189	33	688
Scottsdale	2,963	19	1,010	1,934	20	1,510	197	3	156
Surprise	1,478	10	387	1,081	11	580	57	1	40
Tempe	4,153	17	1,474	2,662	17	2,164	216	7	140
Tolleson	289	1	82	206	1	119	15	0	8
Wickenburg	139	1	23	115	1	29	5	0	3
Youngtown	42	0	7	35	0	9	1	0	0
Guadalupe	110	0	26	84	0	36	4	0	3
Litchfield Park	20	0	6	14	0	8	1	0	1
Queen Creek	476	1	85	390	1	114	16	0	5
Fountain Hills	131	1	39	91	1	48	7	1	4
Carefree	23	0	8	15	0	9	0	0	0
TOTAL	71,611	460	19,997	51,154	492	28,855	2,834	81	1,730

Mohave County	1,229	39	390	800	42	616	78	7	59
Kingman	474	2	124	348	3	168	18	0	13
Lake Havasu City	485	5	162	318	6	226	48	0	29
Bullhead City	495	5	134	356	5	191	29	3	16
Colorado City	15	0	5	10	0	10	0	0	0
TOTAL	2,698	51	815	1,832	56	1,211	173	10	117

Crashes in Maricopa County accounted for 72.50% of all crashes and 47.42% of fatal crashes.

Section 2: – Geographic Location

Table 2 – 5

Analysis by Jurisdiction

COUNTIES Cities	Number of Crashes				No. of Persons		Alcohol Related		
	Total	Fatal	Injury	PDO	Killed	Injured	Crashes	Killed	Injured
Navajo County	533	24	145	364	31	209	39	4	28
Holbrook	43	1	16	26	1	23	4	1	2
Show Low	315	3	89	223	3	122	10	0	3
Snowflake	54	1	17	36	1	21	4	1	1
Taylor	44	0	9	35	0	15	0	0	0
Winslow	71	1	12	58	1	18	3	0	1
Pinetop-Lakeside	102	1	28	73	1	45	6	1	7
TOTAL	1,162	31	316	815	38	453	66	7	42
Pima County	2,442	51	739	1,652	57	1,084	152	13	98
South Tucson	23	0	7	16	0	13	2	0	1
Tucson	5,278	90	2,008	3,180	95	2,777	380	34	233
Sahuarita	190	4	63	123	5	98	11	0	4
Oro Valley	231	0	59	172	0	71	5	0	0
Marana	677	5	165	507	5	224	28	1	14
TOTAL	8,841	150	3,041	5,650	162	4,267	578	48	350
Pinal County	1,788	37	566	1,185	39	820	84	3	76
Casa Grande	554	1	184	369	1	262	37	0	18
Coolidge	144	3	60	81	3	110	7	0	9
Eloy	129	4	49	76	4	81	5	0	2
Florence	59	2	27	30	2	34	4	1	3
Kearny	7	1	0	6	1	0	1	0	0
Mammoth	3	0	1	2	0	4	0	0	0
Queen Creek	23	0	6	17	0	7	1	0	2
Superior	2	1	0	1	2	0	0	0	0
Apache Junction	411	5	119	287	5	167	23	0	20
Maricopa	328	3	115	210	3	157	25	0	17
TOTAL	3,448	57	1,127	2,264	60	1,642	187	4	147
Santa Cruz County	161	3	25	133	5	40	9	0	5
Nogales	48	2	12	34	2	16	0	0	0
Patagonia	0	0	0	0	0	0	0	0	0
TOTAL	209	5	37	167	7	56	9	0	5
Yavapai County	1,681	43	530	1,108	51	826	93	4	78
Clarkdale	9	0	2	7	0	5	4	0	0
Cottonwood	297	3	78	216	3	115	21	1	9
Jerome	5	0	2	3	0	2	0	0	0
Peoria	6	0	4	2	0	5	0	0	0
Prescott	528	4	165	359	4	217	26	1	11
Prescott Valley	403	1	125	277	1	175	22	0	5
Chino Valley	161	1	43	117	1	59	5	0	2
Camp Verde	167	2	54	111	3	67	19	0	11
Dewey-Humboldt	22	1	4	17	1	8	3	0	1
Sedona	65	0	21	44	0	29	0	0	0
Wickenburg	8	0	5	3	0	6	0	0	0
TOTAL	3,352	55	1,033	2,264	64	1,514	193	6	117

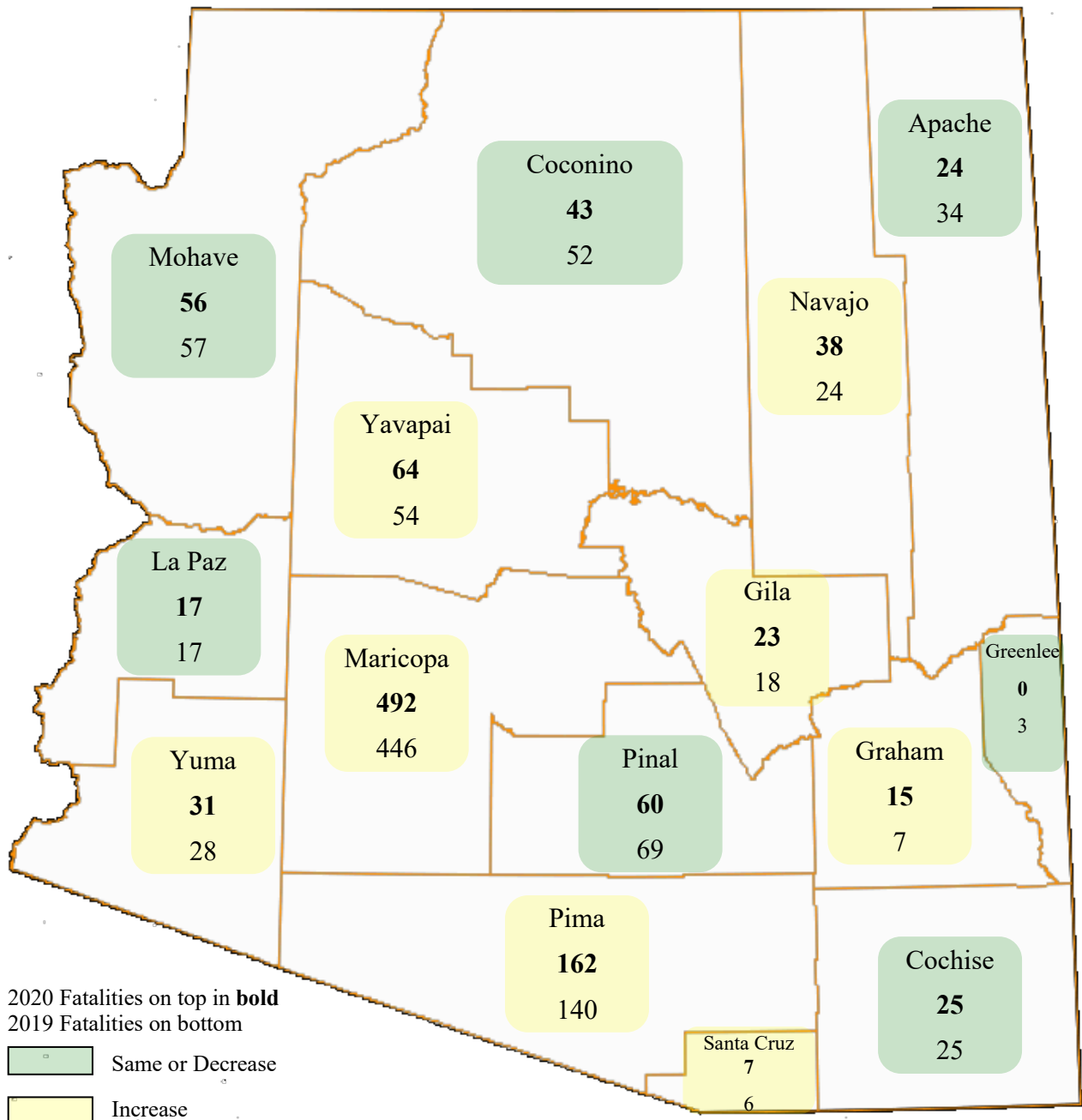
Section 2: – Geographic Location

Table 2 – 5
Analysis by Jurisdiction

COUNTIES Cities	Number of Crashes				No. of Persons		Alcohol Related		
	Total	Fatal	Injury	PDO	Killed	Injured	Crashes	Killed	Injured
Yuma County	720	15	227	478	15	352	38	0	22
Somerton	66	1	20	45	1	30	7	1	1
Yuma	1,275	9	492	774	9	687	61	1	40
Wellton	20	4	6	10	5	11	1	0	5
San Luis	82	1	23	58	1	35	5	0	1
TOTAL	2,163	30	768	1,365	31	1,115	112	2	69

Note: Some individual city data may be incomplete due to lack of timely reporting or changes in crash reporting procedures.

Total Fatalities by County for 2019 and 2020



Section 2: – Geographic Location

Chart 2 – 1

Urban and Rural Crashes by Day of Week

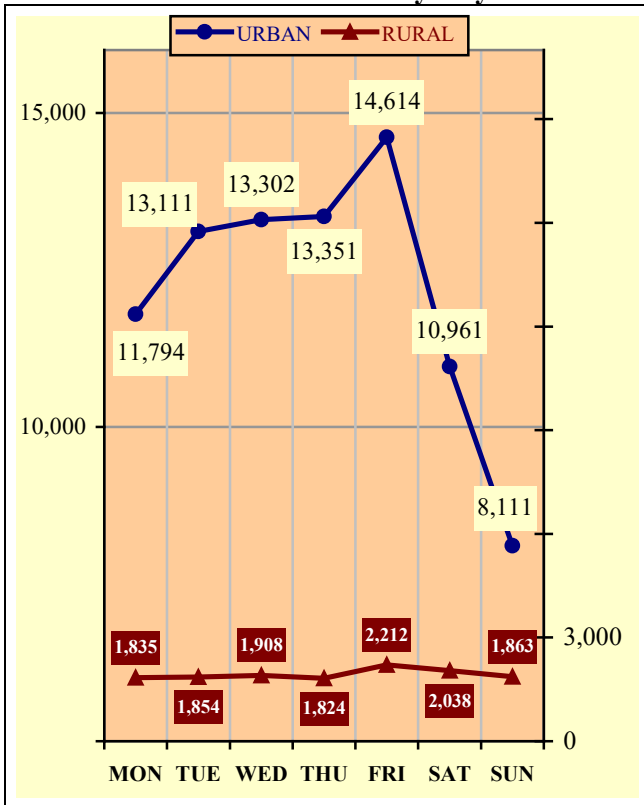


Chart 2 – 2

Urban and Rural Fatal Crashes by Day of Week

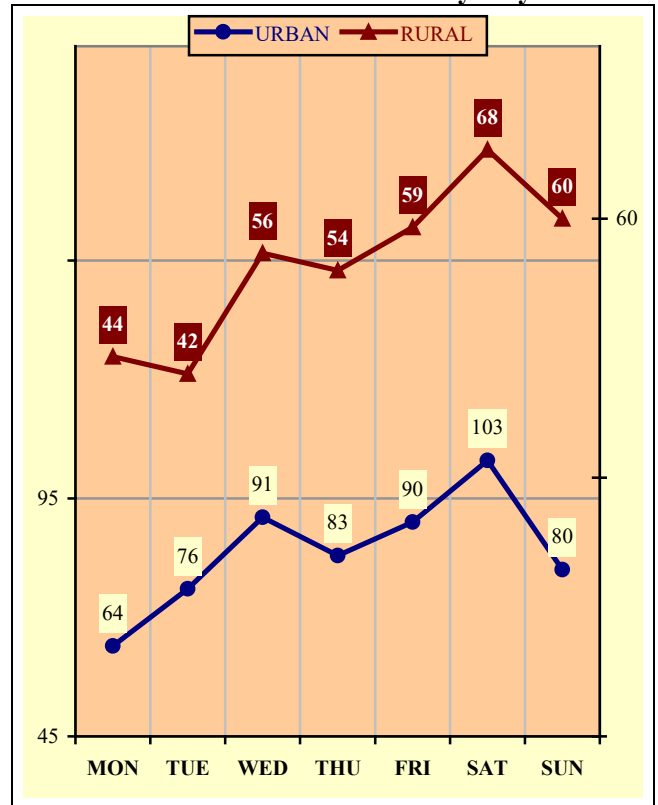
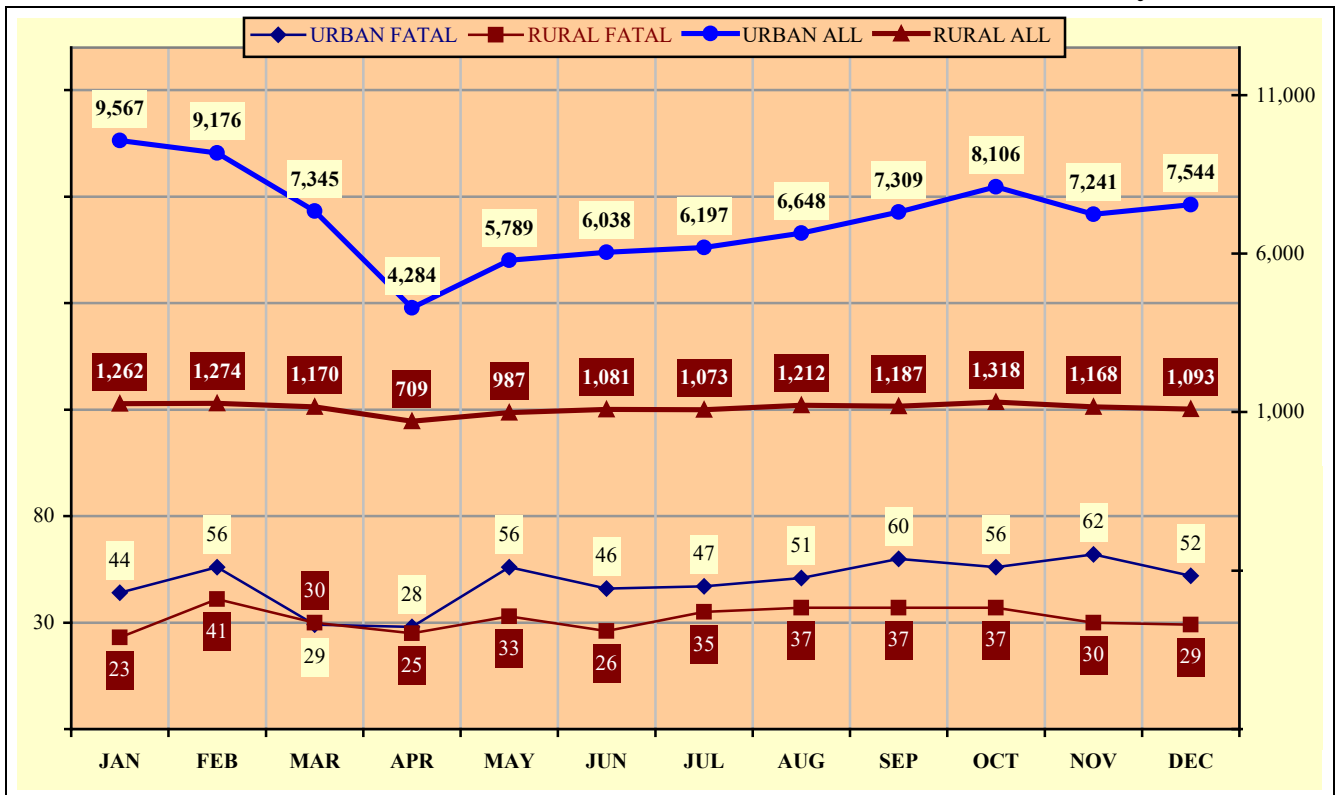


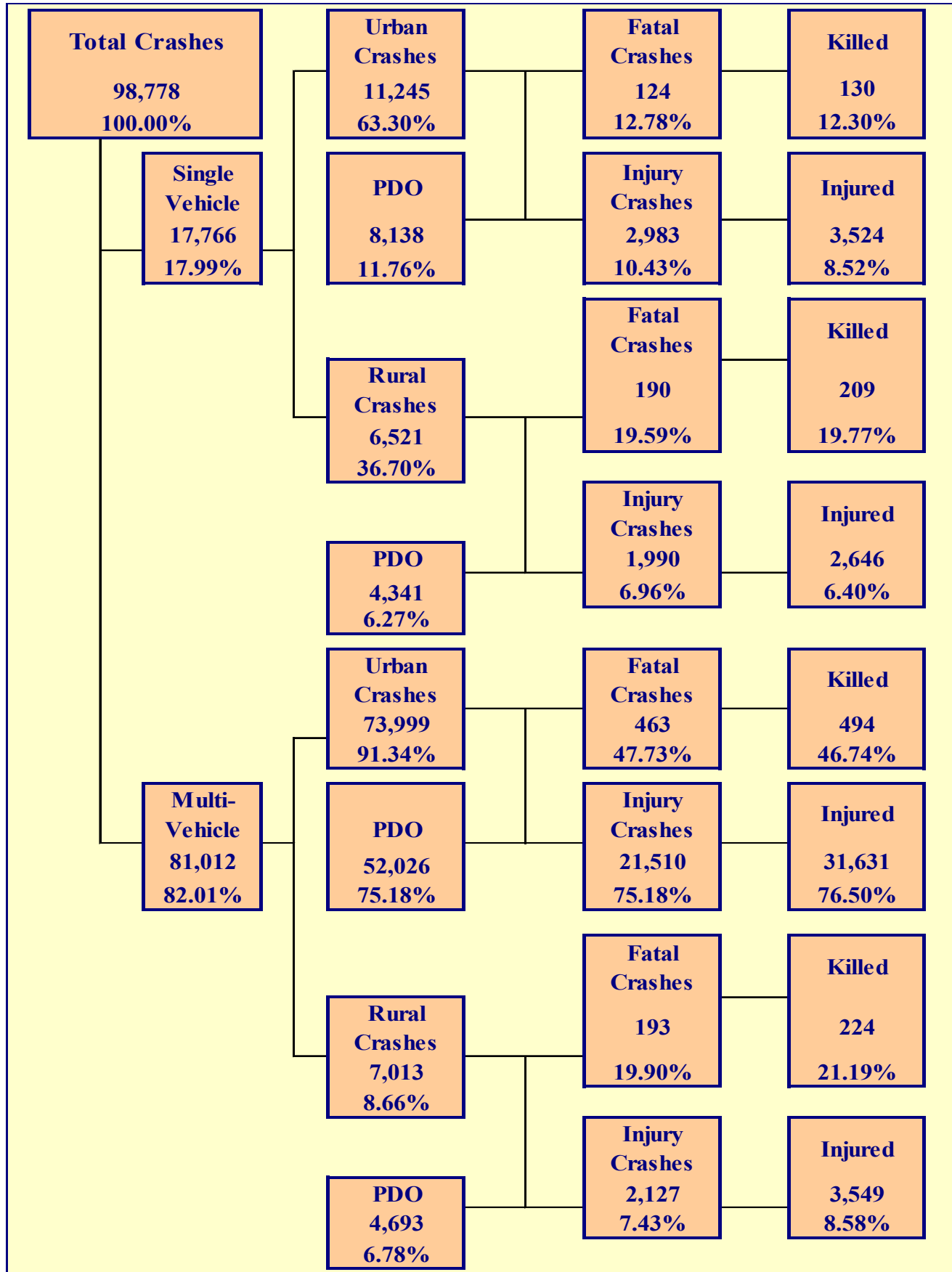
Chart 2 – 3

All Urban and Rural Crashes vs. Urban and Rural Fatal Crashes by Month



Section 3

Crash Descriptions



Section 3: – Crash Descriptions

Table 3 – 1
Manner of Collision in Multi-Vehicle Crashes

Manner of Collision Type	Number of Crashes							
	Total	Percent of Total Crashes	Fatal	Percent of Fatal Crashes	Injury	Percent of Injury Crashes	PDO	Percent of PDO Crashes
Angle	12,669	15.64%	84	12.80%	4,366	18.47%	8,219	14.49%
Left Turn	14,123	17.43%	78	11.89%	5,078	21.48%	8,967	15.81%
Rear End	31,868	39.34%	75	11.43%	9,309	39.38%	22,484	39.64%
Head-On	1,681	2.08%	88	13.41%	656	2.78%	937	1.65%
Sideswipe (same)	13,520	16.69%	26	3.96%	1,818	7.69%	11,676	20.59%
Sideswipe (opposite)	1,441	1.78%	21	3.20%	314	1.33%	1,106	1.95%
U-Turn	308	0.38%	3	0.46%	92	0.39%	213	0.38%
Other*	4,749	5.86%	267	40.70%	1,897	8.03%	2,585	4.56%
Unknown	653	0.81%	14	2.13%	107	0.45%	532	0.94%
TOTAL	81,012	100.00%	656	100.00%	23,637	100.00%	56,719	100.00%

*Other includes pedestrian and pedalcyclist crashes

Table 3 – 2
Lighting Conditions

Type of Lighting Conditions	Number of Crashes				Number of Persons	
	Total	Fatal	Injury	PDO	Killed	Injured
Daylight	67,043	393	19,519	47,131	436	28,187
Dawn	1,869	17	549	1,303	18	801
Dusk	2,781	25	843	1,913	27	1,247
Dark - Lighted	20,224	243	5,869	14,112	253	8,468
Dark - Not Lighted	5,913	175	1,691	4,047	198	2,457
Dark - Unknown Lighting	401	38	58	305	44	77
Unknown	547	79	81	387	81	113
TOTAL	98,778	970	28,610	69,198	1,057	41,350

Table 3 – 3
Weather Conditions

Type of Weather Conditions	Number of Crashes				Number of Persons	
	Total	Fatal	Injury	PDO	Killed	Injured
Clear	88,940	720	25,914	62,306	789	37,456
Cloudy	6,018	60	1,764	4,194	64	2,563
Sleet/Hail	96	3	25	68	5	48
Rain	2,509	12	682	1,815	12	942
Snow or Blowing Snow	178	0	43	135	0	56
Severe Crosswinds	5	0	2	3	0	3
Blowing Sand, Soil, Dirt	65	0	14	51	0	23
Fog, Smog, Smoke	64	1	23	40	1	33
Other	53	0	16	37	0	24
Unknown	850	174	127	549	186	202
TOTAL	98,778	970	28,610	69,198	1,057	41,350

Section 3: – Crash Descriptions

Table 3 – 4
Road Surface Conditions

Type of Road Surface Condition	Number of Drivers				Number of Persons	
	Total	In Fatal Crashes	In Injury Crashes	In PDO Crashes	Killed	Injured
Dry	179,680	1,245	53,212	125,223	847	39,523
Wet	6,009	36	1,760	4,213	27	1,325
Snow/Slush	302	0	82	220	0	67
Ice/Frost	253	1	62	190	1	59
Water (standing or moving)	129	0	27	102	0	29
Mud, Dirt, Gravel, Sand	385	6	149	230	7	166
Other	70	0	22	48	0	22
Unknown	2,844	210	435	2,199	175	159
TOTAL	189,672	1,498	55,749	132,425	1,057	41,350

Table 3 – 5
Roadway Grade

Type of Roadway Grade	Number of Drivers				Number of Persons	
	Total	In Fatal Crashes	In Injury Crashes	In PDO Crashes	Killed	Injured
Level	176,420	1,079	51,839	123,502	730	38,171
Downhill	5,680	104	1,931	3,645	86	1,735
Uphill	4,801	83	1,502	3,216	51	1,224
Hillcrest	39	1	11	27	1	11
Sag/Dip/Bottom	46	0	14	32	0	7
Unknown	2,686	231	452	2,003	189	202
TOTAL	189,672	1,498	55,749	132,425	1,057	41,350

Table 3 – 6
Roadway Alignment

Type of Roadway Alignment	Number of Drivers				Number of Persons	
	Total	In Fatal Crashes	In Injury Crashes	In PDO Crashes	Killed	Injured
Straight	176,364	1,070	52,325	122,969	716	38,333
Curve Left	4,947	96	1,437	3,414	79	1,424
Curve Right	5,148	92	1,453	3,603	67	1,330
Unknown	3,213	240	534	2,439	195	263
TOTAL	189,672	1,498	55,749	132,425	1,057	41,350

Section 3: – Crash Descriptions

Chart 3 – 1

All Crashes vs. Fatal Crashes by Time of Day - Weekdays

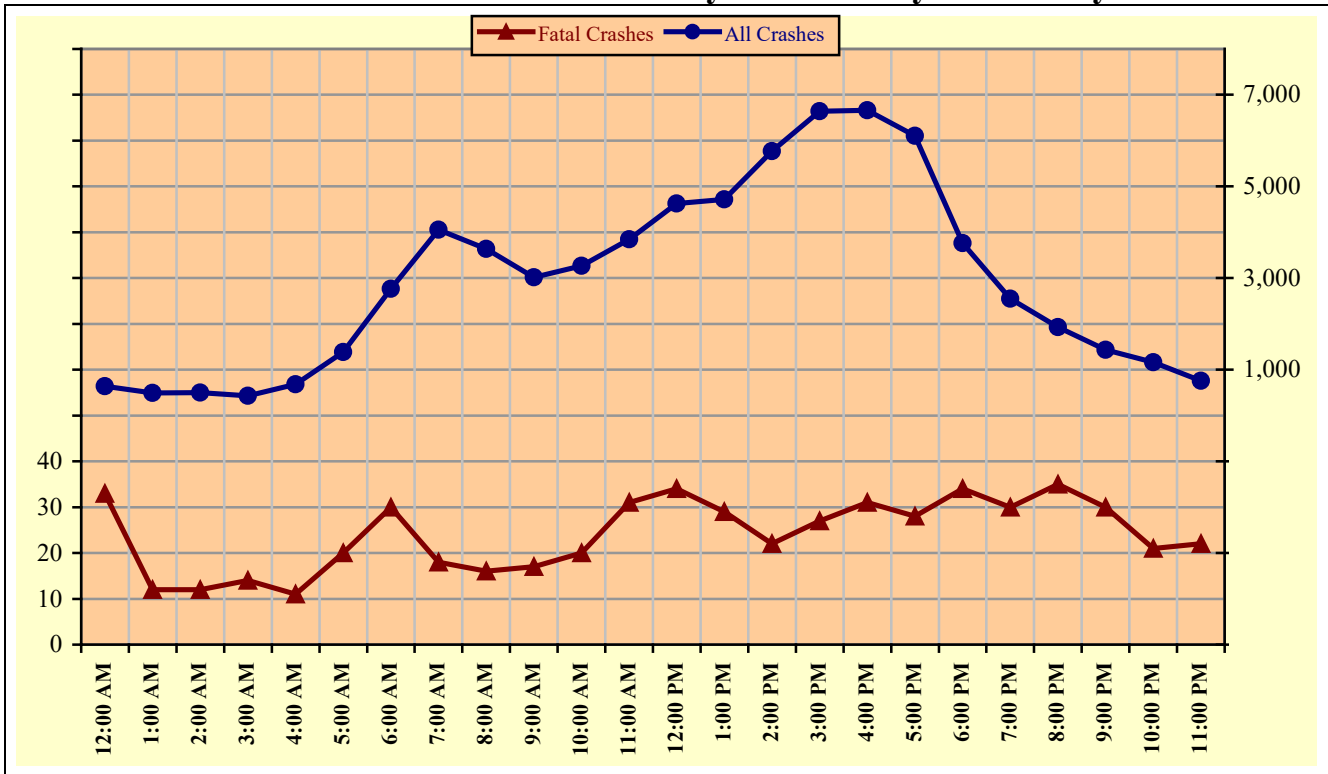
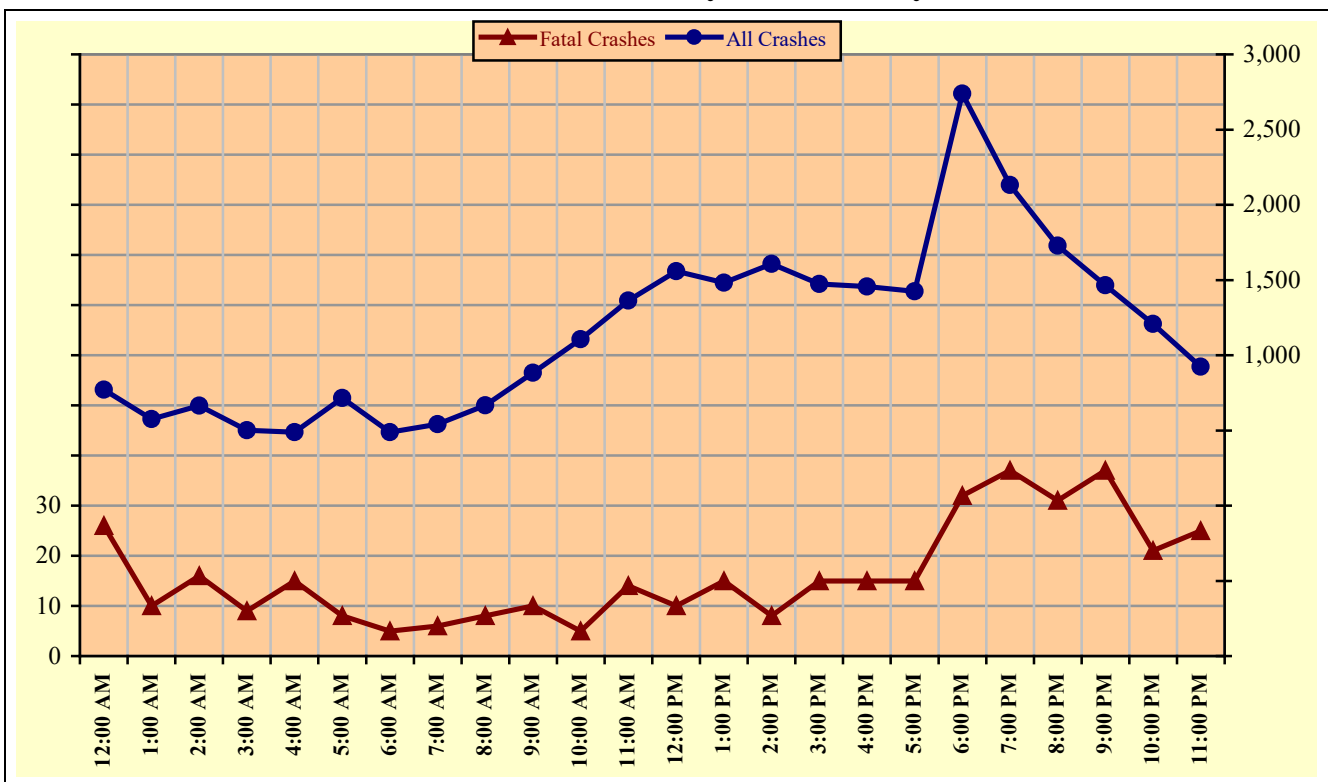


Chart 3 – 2

All Crashes vs. Fatal Crashes by Time of Day - Weekends



Section 3: – Crash Descriptions

Chart 3 – 3
Crashes by Day of Week

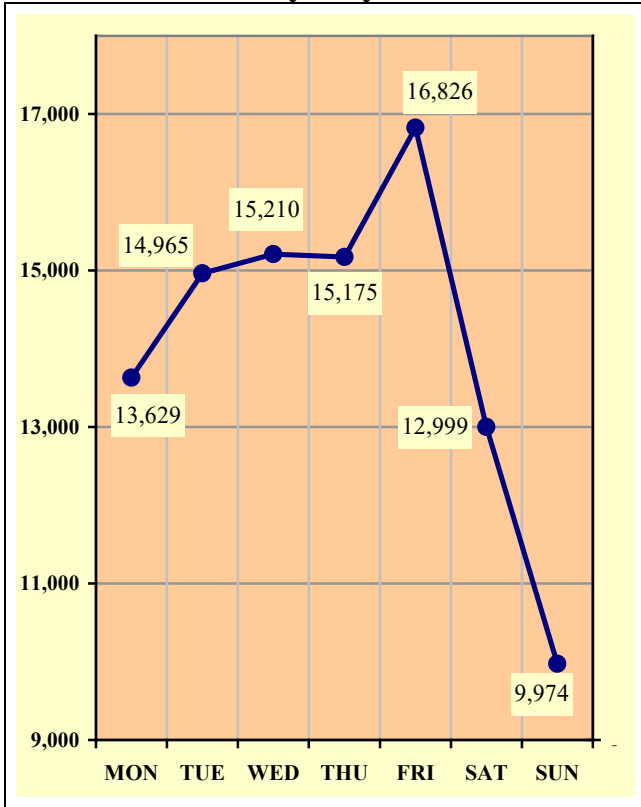


Chart 3 – 4
Fatal Crashes by Day of Week

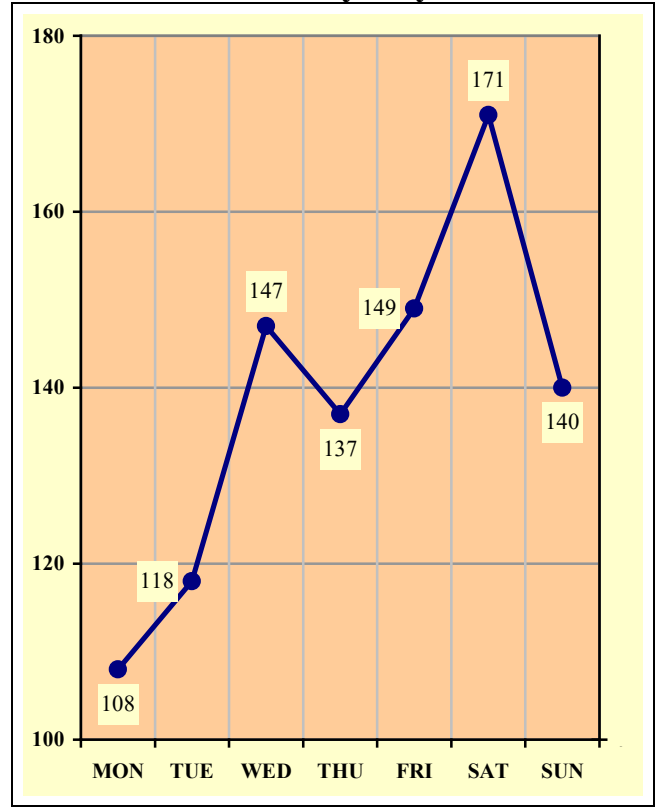
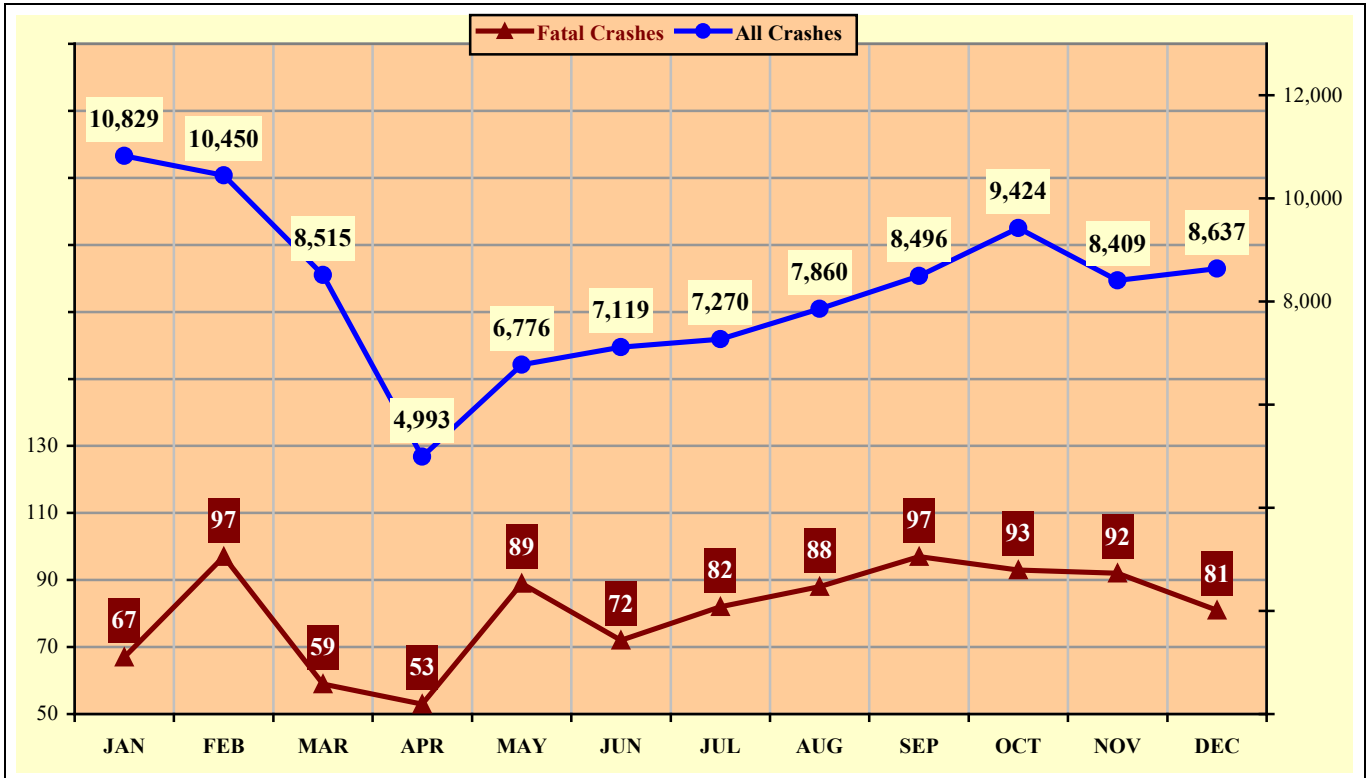


Chart 3 – 5
All Crashes vs. Fatal Crashes by Month

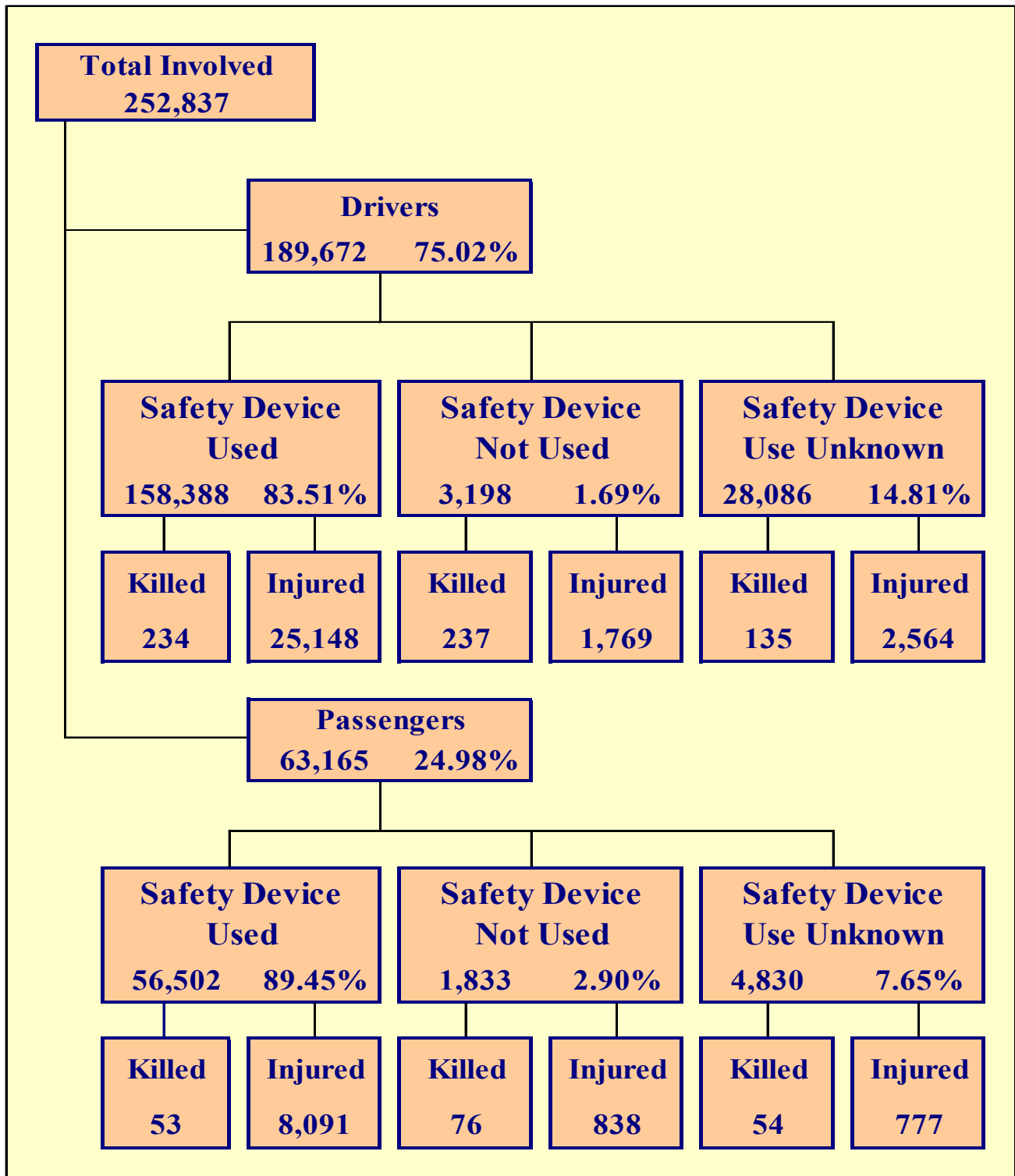


Section 3: – Crash Descriptions

Table 3 – 7
Crashes by Hour and Day of Week

Hour Beginning	Total Crashes		Monday		Tuesday		Wednesday		Thursday		Friday		Saturday		Sunday		Weekdays		Weekends	
	All	Fatal	All	Fatal	All	Fatal	All	Fatal	All	Fatal	All	Fatal	All	Fatal	All	Fatal	All	Fatal	All	Fatal
12:00 AM	1,412	59	167	7	127	7	166	7	166	8	182	11	285	9	319	10	641	33	771	26
1:00 AM	1,069	22	122	3	98	3	106	1	132	3	158	5	216	2	237	5	494	12	575	10
2:00 AM	1,163	28	130	6	112	3	121	3	128	5	137	1	254	3	281	7	498	12	665	16
3:00 AM	933	23	105	0	93	2	104	5	107	6	127	1	181	3	216	6	431	14	502	9
4:00 AM	1,169	26	145	3	158	3	199	5	159	0	165	3	166	5	177	7	681	11	488	15
5:00 AM	2,103	28	309	2	362	3	350	8	365	4	311	5	230	2	176	4	1,388	20	715	8
6:00 AM	3,255	35	489	6	639	5	574	7	566	8	499	4	292	3	196	2	2,767	30	488	5
7:00 AM	4,594	24	747	4	864	4	831	4	879	3	732	3	335	3	206	3	4,053	18	541	6
8:00 AM	4,303	24	653	2	818	5	777	2	724	3	664	4	397	4	270	4	3,636	16	667	8
9:00 AM	3,900	27	560	2	597	7	590	2	632	4	638	2	546	8	337	2	3,017	17	883	10
10:00 AM	4,370	25	666	1	625	2	637	7	670	6	666	4	688	2	418	3	3,264	20	1,106	5
11:00 AM	5,207	45	728	7	718	6	788	4	781	8	828	6	814	6	550	8	3,843	31	1,364	14
12:00 PM	6,185	44	894	8	874	5	904	3	870	7	1,085	11	922	6	636	4	4,627	34	1,558	10
1:00 PM	6,201	44	868	9	888	3	954	3	932	7	1,077	7	844	8	638	7	4,719	29	1,482	15
2:00 PM	7,373	30	1,040	5	1,159	1	1,169	6	1,092	5	1,306	5	947	1	660	7	5,766	22	1,607	8
3:00 PM	8,115	42	1,202	5	1,376	7	1,347	7	1,283	3	1,434	5	796	7	677	8	6,642	27	1,473	15
4:00 PM	8,117	46	1,155	2	1,348	5	1,367	15	1,333	4	1,458	5	787	8	669	7	6,661	31	1,456	15
5:00 PM	7,527	43	1,061	2	1,195	4	1,259	7	1,237	9	1,350	6	815	10	610	5	6,102	28	1,425	15
6:00 PM	6,503	66	852	5	978	11	1,000	8	935	10	1,184	10	867	17	687	5	3,765	34	2,738	32
7:00 PM	4,677	67	594	8	622	7	614	7	716	8	846	12	696	14	589	11	2,546	30	2,131	37
8:00 PM	3,656	66	415	9	503	6	489	10	521	10	633	10	610	14	485	7	1,928	35	1,728	31
9:00 PM	2,898	67	299	5	355	12	355	7	423	6	537	11	521	18	408	8	1,432	30	1,466	37
10:00 PM	2,369	42	251	3	283	4	307	11	320	3	462	9	432	6	314	6	1,161	21	1,208	21
11:00 PM	1,679	47	177	4	173	3	202	8	204	7	347	9	358	12	218	4	756	22	923	25
TOTAL	98,778	970	13,629	108	14,965	118	15,210	147	15,175	137	16,826	149	12,999	171	9,974	140	70,818	577	27,960	393

Crashes during Weekends accounted for 28.31% of all crashes and 40.52% of Fatal Crashes.



Section 4: – Safety Devices

**Table 4 – 1
Child Safety Device Usage (less than five years old)**

Severity of Injury	Safety Device Used	Percent of Safety Device Used	Safety Device Not Used	Percent of Safety Device Not Used	Safety Device Use Unknown	Percent of Unknown
No Injury	6,401	90.44%	67	58.77%	187	72.76%
Unknown Injury	109	1.54%	2	1.75%	47	18.29%
Possible Injury	351	4.96%	17	14.91%	7	2.72%
Suspected Minor Injury	194	2.74%	19	16.67%	11	4.28%
Suspected Serious Injury	19	0.27%	8	7.02%	3	1.17%
Fatal Injury	4	0.06%	1	0.88%	2	0.78%
TOTALS	7,078	100.00%	114	100.00%	257	100.00%

**Table 4 – 2
Driver Safety Device Usage**

Severity of Injury	Safety Device Used	Percent of Safety Device Used	Safety Device Not Used	Percent of Safety Device Not Used	Safety Device Use Unknown	Percent of Unknown
No Injury	131,531	83.04%	1,139	35.62%	15,954	56.80%
Unknown Injury	1,475	0.93%	53	1.66%	9,433	33.59%
Possible Injury	14,231	8.98%	482	15.07%	1,068	3.80%
Suspected Minor Injury	9,799	6.19%	835	26.11%	1,080	3.85%
Suspected Serious Injury	1,118	0.71%	452	14.13%	416	1.48%
Fatal Injury	234	0.15%	237	7.41%	135	0.48%
TOTALS	158,388	100.00%	3,198	100.00%	28,086	100.00%

**Table 4 – 3
Passenger Safety Device Usage**

Severity of Injury	Safety Device Used	Percent of Safety Device Used	Safety Device Not Used	Percent of Safety Device Not Used	Safety Device Use Unknown	Percent of Unknown
No Injury	47,712	84.44%	864	47.14%	3,266	67.62%
Unknown Injury	646	1.14%	55	3.00%	733	15.18%
Possible Injury	4,795	8.49%	251	13.69%	356	7.37%
Suspected Minor Injury	2,932	5.19%	394	21.49%	313	6.48%
Suspected Serious Injury	364	0.64%	193	10.53%	108	2.24%
Fatal Injury	53	0.09%	76	4.15%	54	1.12%
TOTALS	56,502	100.00%	1,833	100.00%	4,830	100.00%

Section 4: – Safety Devices

Table 4 – 4
Driver Safety Device Usage by Gender

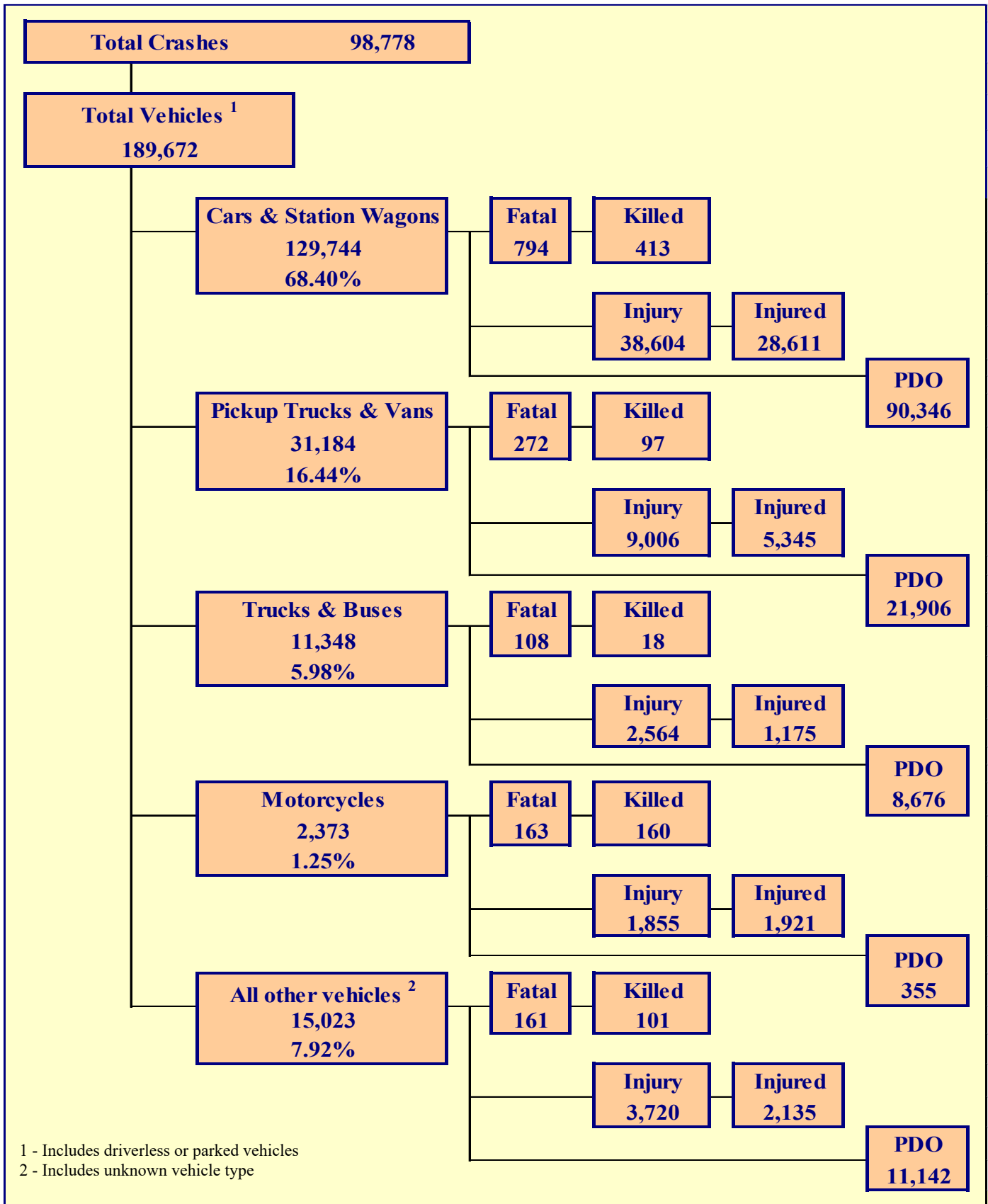
Gender of Driver	Number of Drivers							Total	Percent of Total
	Safety Device Used	Percent of Safety Device Used	Safety Device Not Used	Percent of Safety Device Not Used	Safety Device Use Unknown	Percent of Unknown			
Male	93,048	58.75%	2,327	72.76%	8,946	31.85%	104,321	55.00%	
Female	65,178	41.15%	840	26.27%	3,939	14.02%	69,957	36.88%	
Unknown	162	0.10%	31	0.97%	15,201	54.12%	15,394	8.12%	
TOTAL	158,388	100.00%	3,198	100.00%	28,086	100.00%	189,672	100.00%	

Table 4 – 5
Driver Safety Device Usage by Age

Driver Age Group	Number of Drivers							Total	Percent of Total
	Safety Device Used	Percent of Safety Device Used	Safety Device Not Used	Percent of Safety Device Not Used	Safety Device Use Unknown	Percent of Unknown			
15 & Under	241	0.15%	35	1.09%	48	0.17%	324	0.17%	
16	2,221	1.40%	38	1.19%	147	0.52%	2,406	1.27%	
17	3,167	2.00%	53	1.66%	191	0.68%	3,411	1.80%	
18	4,381	2.77%	97	3.03%	275	0.98%	4,753	2.51%	
19	4,917	3.10%	112	3.50%	343	1.22%	5,372	2.83%	
20	4,737	2.99%	112	3.50%	324	1.15%	5,173	2.73%	
21	4,622	2.92%	93	2.91%	310	1.10%	5,025	2.65%	
22	4,358	2.75%	125	3.91%	320	1.14%	4,803	2.53%	
23	4,351	2.75%	94	2.94%	317	1.13%	4,762	2.51%	
24	4,096	2.59%	73	2.28%	320	1.14%	4,489	2.37%	
25-34	35,766	22.58%	867	27.11%	2,892	10.30%	39,525	20.84%	
35-44	26,709	16.86%	512	16.01%	1,993	7.10%	29,214	15.40%	
45-54	22,677	14.32%	361	11.29%	1,511	5.38%	24,549	12.94%	
55-64	18,698	11.81%	314	9.82%	1,257	4.48%	20,269	10.69%	
65-74	10,972	6.93%	177	5.53%	663	2.36%	11,812	6.23%	
75 & Older	5,746	3.63%	71	2.22%	374	1.33%	6,191	3.26%	
Unknown	729	0.46%	64	2.00%	16,801	59.82%	17,594	9.28%	
TOTAL	158,388	100.00%	3,198	100.00%	28,086	100.00%	189,672	100.00%	

Section 5

Motor Vehicle and Driver Descriptions



Section 5: – Motor Vehicle and Driver Descriptions

**Table 5 – 1
Arizona Motor Vehicle Registrations**

Privately Owned Vehicles	5,602,448
Commercial Vehicles	344,606
Motorcycles	275,632
Mopeds	237
Other	133,297
TOTAL	6,356,220
Source: MVD - MV988 MV630419, Currently Registered Vehicles by County Listing, dated 12/31/2020.	

**Table 5 – 2
Motor Vehicle Crash Involvement by Vehicle Type**

Motor Vehicle Type	Number of Vehicles				
	Total	Percent of Total	In Fatal Crashes	In Injury Crashes	In PDO Crashes
Passenger Cars (Sedans, Convertibles, etc.)	91,116	48.039%	520	26,893	63,703
Station Wagons	38,628	20.366%	274	11,711	26,643
Pickup Trucks	27,412	14.452%	225	7,929	19,258
Vans	3,772	1.989%	47	1,077	2,648
Truck Tractor (with or without Semi-Trailer)	1,481	0.781%	61	323	1,097
Concrete Mixer Trucks	28	0.015%	0	5	23
Dump Trucks	133	0.070%	8	28	97
Garbage Trucks	94	0.050%	2	15	77
Tanker Trucks	24	0.013%	0	5	19
Wrecker or Tow Trucks	57	0.030%	1	12	44
Other Truck Combinations	8,896	4.690%	33	2,023	6,840
School Bus	48	0.025%	0	14	34
Commercial or Non-Commercial Bus	587	0.309%	3	139	445
Motorcycle (two or three wheel)	2,373	1.251%	163	1,855	355
All Terrain Vehicle or Cycle	234	0.123%	19	140	75
Golf Carts	62	0.033%	3	50	9
Moped	24	0.013%	5	18	1
Recreational Vehicle	201	0.106%	0	51	150
Motor Home or House Car	53	0.028%	3	5	45
Fire Trucks	39	0.021%	0	5	34
Ambulances	52	0.027%	0	16	36
Other Types Of Vehicles	96	0.051%	3	38	55
Vehicle Type Unknown	14,262	7.519%	128	3,397	10,737
TOTAL	189,672	100.00%	1,498	55,749	132,425

Section 5: – Motor Vehicle and Driver Descriptions

Table 5 – 3

Hit and Run Drivers Involved in Crashes

Hit and Run	Number of Crashes				Number of Persons	
	Total	Fatal	Injury	PDO	Killed	Injured
Yes	13,512	77	2,421	11,014	78	3,102
No	85,266	893	26,189	58,184	979	38,248
TOTAL	98,778	970	28,610	69,198	1,057	41,350

Table 5 – 4

Gender of Drivers Involved in Crashes

Gender of Driver	Number of Drivers							
	Total	Percent of Total	In Fatal Crashes	Percent of Fatal	In Injury Crashes	Percent of Injury	In PDO Crashes	Percent of PDO
Male	104,321	55.00%	1,025	68.42%	31,457	56.43%	71,839	54.25%
Female	69,957	36.88%	338	22.56%	21,917	39.31%	47,702	36.02%
Unknown	15,394	8.12%	135	9.01%	2,375	4.26%	12,884	9.73%
TOTAL	189,672	100.00%	1,498	100.00%	55,749	100.00%	132,425	100.00%

Table 5 – 5

License Status of Drivers Involved in Crashes

License Status of Driver	Number of Drivers							
	Total	Percent of Total	In Fatal Crashes	Percent of Fatal	In Injury Crashes	Percent of Injury	In PDO Crashes	Percent of PDO
Arizona License	132,468	69.84%	1,037	69.23%	40,604	72.83%	90,827	68.59%
All Others*	57,204	30.16%	461	30.77%	15,145	27.17%	41,598	31.41%
TOTAL	189,672	100.00%	1,498	100.00%	55,749	100.00%	132,425	100.00%

*Includes drivers that have a suspended, revoked, out-of-state or country license, as well as drivers with no license or unknown license type

Table 5 – 6

Passengers Killed and Injured by Age and Gender

Age of Passenger	Passengers Killed				Passengers Injured			
	Total	Male	Female	Gender Unknown	Total	Male	Female	Gender Unknown
0-4	6	4	2	0	508	270	238	0
5-9	8	3	5	0	646	295	351	0
10-14	16	5	11	0	747	348	399	0
15-19	21	8	13	0	1,426	612	814	0
20-24	25	12	13	0	1,228	495	733	0
25-34	31	21	10	0	1,450	609	841	0
35-44	20	12	8	0	921	352	569	0
45-54	15	7	8	0	869	279	590	0
55-64	16	8	8	0	787	235	552	0
65-74	8	3	5	0	526	137	389	0
75 & Older	15	5	10	0	366	96	270	0
Unknown	2	1	0	1	232	102	118	12
TOTAL	183	89	93	1	9,706	3,830	5,864	12

Section 5: – Motor Vehicle and Driver Descriptions

Table 5 – 7

Drivers and Passengers Killed and Injured by Vehicle Type

Motor Vehicle Type	Number of Drivers		Number of Passengers	
	Killed	Injured	Killed	Injured
Passenger Cars (Sedans, Convertibles, etc.)	208	15,239	75	4,813
Station Wagons	93	6,170	37	2,389
Pickup Trucks	62	3,416	13	1,209
Vans	10	507	12	213
Truck Tractor (with or without Semi-Trailer)	11	90	3	23
Concrete Mixer Trucks	0	3	0	0
Dump Trucks	0	8	0	1
Garbage Trucks	0	4	0	2
Tanker Trucks	0	1	0	0
Wrecker or Tow Trucks	0	5	0	0
Other Truck Combinations	3	699	1	221
School Bus	0	5	0	1
Commercial or Non-Commercial Bus	0	35	0	77
Motorcycle (two or three wheel)	153	1,804	7	117
All Terrain Vehicle or Cycle	15	108	5	80
Golf Carts	3	44	0	13
Moped	5	17	0	1
Recreational Vehicle	0	26	0	10
Motor Home or House Car	2	3	0	2
Fire Trucks	0	3	0	5
Ambulances	0	5	0	3
Other Types Of Vehicles	2	27	0	2
Vehicle Type Unknown	39	1,262	30	524
TOTAL	606	29,481	183	9,706

Table 5 – 8

Drivers Killed and Injured by Age and Gender

Age of Driver	Drivers Killed				Drivers Injured			
	Total	Male	Female	Gender Unknown	Total	Male	Female	Gender Unknown
0-4	0	0	0	0	0	0	0	0
5-9	0	0	0	0	2	2	0	0
10-14	0	0	0	0	23	17	6	0
15-19	35	32	3	0	2,324	1,205	1,119	0
20-24	62	55	7	0	4,221	2,269	1,952	0
25-34	121	100	21	0	6,771	3,692	3,079	0
35-44	97	65	32	0	4,763	2,567	2,196	0
45-54	68	55	13	0	4,277	2,262	2,015	0
55-64	114	91	23	0	3,487	1,954	1,533	0
65-74	55	47	8	0	2,195	1,209	986	0
75 & Older	49	33	16	0	1,238	660	578	0
Unknown	5	4	0	1	180	94	33	53
TOTAL	606	482	123	1	29,481	15,931	13,497	53

Section 5: – Motor Vehicle and Driver Descriptions

Table 5 – 9

Licensed Drivers in Arizona by Age

Driver Age Group	Male Number	Percent of Male	Female Number	Percent of Female	Unknown Number	Total Number	Percent of Total	Cumulative Percent
16	11,849	0.41%	12,116	0.42%	0	23,965	0.42%	0.42%
17	21,955	0.75%	21,276	0.75%	0	43,231	0.75%	1.16%
18	29,805	1.02%	28,007	0.98%	1	57,813	1.00%	2.17%
19	35,084	1.20%	32,810	1.15%	1	67,895	1.18%	3.34%
20	39,788	1.36%	36,944	1.30%	0	76,732	1.33%	4.67%
21	41,998	1.44%	39,160	1.37%	1	81,159	1.41%	6.08%
22	44,091	1.51%	40,900	1.43%	0	84,991	1.47%	7.55%
23	46,084	1.58%	41,985	1.47%	1	88,070	1.53%	9.07%
24	47,459	1.62%	44,287	1.55%	0	91,746	1.59%	10.66%
25-34	520,282	17.81%	492,750	17.28%	4	1,013,036	17.55%	28.21%
35-44	510,470	17.47%	489,297	17.16%	5	999,772	17.32%	45.53%
45-54	501,192	17.16%	468,067	16.41%	0	969,259	16.79%	62.32%
55-64	492,167	16.85%	490,179	17.19%	3	982,349	17.02%	79.34%
65-74	353,409	12.10%	379,061	13.29%	1	732,471	12.69%	92.02%
75 & older	225,557	7.72%	234,882	8.24%	0	460,439	7.98%	100.00%
TOTALS	2,921,190	100.00%	2,851,721	100.00%	17	5,772,928	100.00%	100.00%

Source: MVD - MV708 MV650653-1, Point-in-Time Driver Credential Report/All Driver Licenses by Age, Gender, & Class (page 19), dated 1/2/2021.

Table 5 – 10

Driver Involvement by Age

Driver Age Group	Number of Drivers							
	Total	Percent of Total	In Fatal Crashes	Percent of Fatal	In Injury Crashes	Percent of Injury	In PDO Crashes	Percent of PDO
15 & Under	324	0.17%	5	0.33%	109	0.20%	210	0.16%
16	2,406	1.27%	13	0.87%	630	1.13%	1,763	1.33%
17	3,411	1.80%	17	1.13%	979	1.76%	2,415	1.82%
18	4,753	2.51%	26	1.74%	1,342	2.41%	3,385	2.56%
19	5,372	2.83%	27	1.80%	1,541	2.76%	3,804	2.87%
20	5,173	2.73%	28	1.87%	1,580	2.83%	3,565	2.69%
21	5,025	2.65%	31	2.07%	1,560	2.80%	3,434	2.59%
22	4,803	2.53%	35	2.34%	1,481	2.66%	3,287	2.48%
23	4,762	2.51%	39	2.60%	1,482	2.66%	3,241	2.45%
24	4,489	2.37%	26	1.74%	1,393	2.50%	3,070	2.32%
25-34	39,525	20.84%	291	19.43%	12,244	21.96%	26,990	20.38%
35-44	29,214	15.40%	235	15.69%	8,780	15.75%	20,199	15.25%
45-54	24,549	12.94%	189	12.62%	7,643	13.71%	16,717	12.62%
55-64	20,269	10.69%	211	14.09%	6,162	11.05%	13,896	10.49%
65-74	11,812	6.23%	109	7.28%	3,844	6.90%	7,859	5.93%
75 & Older	6,191	3.26%	71	4.74%	2,089	3.75%	4,031	3.04%
Unknown	17,594	9.28%	145	9.68%	2,890	5.18%	14,559	10.99%
TOTAL	189,672	100.00%	1,498	100.00%	55,749	100.00%	132,425	100.00%

Section 5: – Motor Vehicle and Driver Descriptions

**Table 5 – 11
Driver Violations**

Type of Violation or Behavior	Number of Drivers							
	Total	Percent of Total	In Fatal Crashes	Percent of Fatal	In Injury Crashes	Percent of Injury	In PDO Crashes	Percent of PDO
No Improper Action	93,038	49.05%	543	36.25%	27,650	49.60%	64,845	48.97%
Speed too Fast for Conditions	28,982	15.28%	161	10.75%	9,355	16.78%	19,466	14.70%
Exceeded Lawful Speed	1,013	0.53%	70	4.67%	398	0.71%	545	0.41%
Failed to Yield Right-Of-Way	16,621	8.76%	101	6.74%	5,715	10.25%	10,805	8.16%
Followed Too Closely	5,599	2.95%	3	0.20%	1,446	2.59%	4,150	3.13%
Ran Stop Sign	977	0.52%	14	0.93%	408	0.73%	555	0.42%
Disregarded Traffic Signal	4,801	2.53%	47	3.14%	2,050	3.68%	2,704	2.04%
Made Improper Turn	3,674	1.94%	6	0.40%	928	1.66%	2,740	2.07%
Drove in Opposing Lane	343	0.18%	10	0.67%	119	0.21%	214	0.16%
Drove Left of Center Line	625	0.33%	61	4.07%	243	0.44%	321	0.24%
Passed in No-Passing Zone	114	0.06%	3	0.20%	36	0.06%	75	0.06%
Unsafe Lane Change	6,515	3.43%	14	0.93%	998	1.79%	5,503	4.16%
Failed to Keep in Proper Lane	5,289	2.79%	88	5.87%	1,326	2.38%	3,875	2.93%
Crossed Median	145	0.08%	20	1.34%	66	0.12%	59	0.04%
Aggressive Driving	205	0.11%	3	0.20%	59	0.11%	143	0.11%
Wrong Way Driving	61	0.03%	12	0.80%	22	0.04%	27	0.02%
Other	5,233	2.76%	41	2.74%	1,247	2.24%	3,945	2.98%
Unknown	16,437	8.67%	301	20.09%	3,683	6.61%	12,453	9.40%
TOTAL	189,672	100.00%	1,498	100.00%	55,749	100.00%	132,425	100.00%

**Table 5 – 12
Driver Physical Condition**

Type of Condition	Number of Drivers							
	Total	Percent of Total	In Fatal Crashes	Percent of Fatal	In Injury Crashes	Percent of Injury	In PDO Crashes	Percent of PDO
No Apparent Influence	161,919	85.37%	726	48.46%	48,099	86.28%	113,094	85.40%
Alcohol	4,405	2.32%	139	9.28%	1,788	3.21%	2,478	1.87%
Illegal Drugs	787	0.41%	51	3.40%	366	0.66%	370	0.28%
Medications	158	0.08%	4	0.27%	75	0.13%	79	0.06%
Marijuana	141	0.07%	18	1.20%	54	0.10%	69	0.05%
Illness or Physical Impairment	650	0.34%	14	0.93%	328	0.59%	308	0.23%
Fell Asleep or Fatigued	1,368	0.72%	9	0.60%	520	0.93%	839	0.63%
Other	668	0.35%	13	0.87%	225	0.40%	430	0.32%
Unknown	19,576	10.32%	524	34.98%	4,294	7.70%	14,758	11.14%
TOTAL	189,672	100.00%	1,498	100.00%	55,749	100.00%	132,425	100.00%

Section 5: – Motor Vehicle and Driver Descriptions

Table 5 – 13

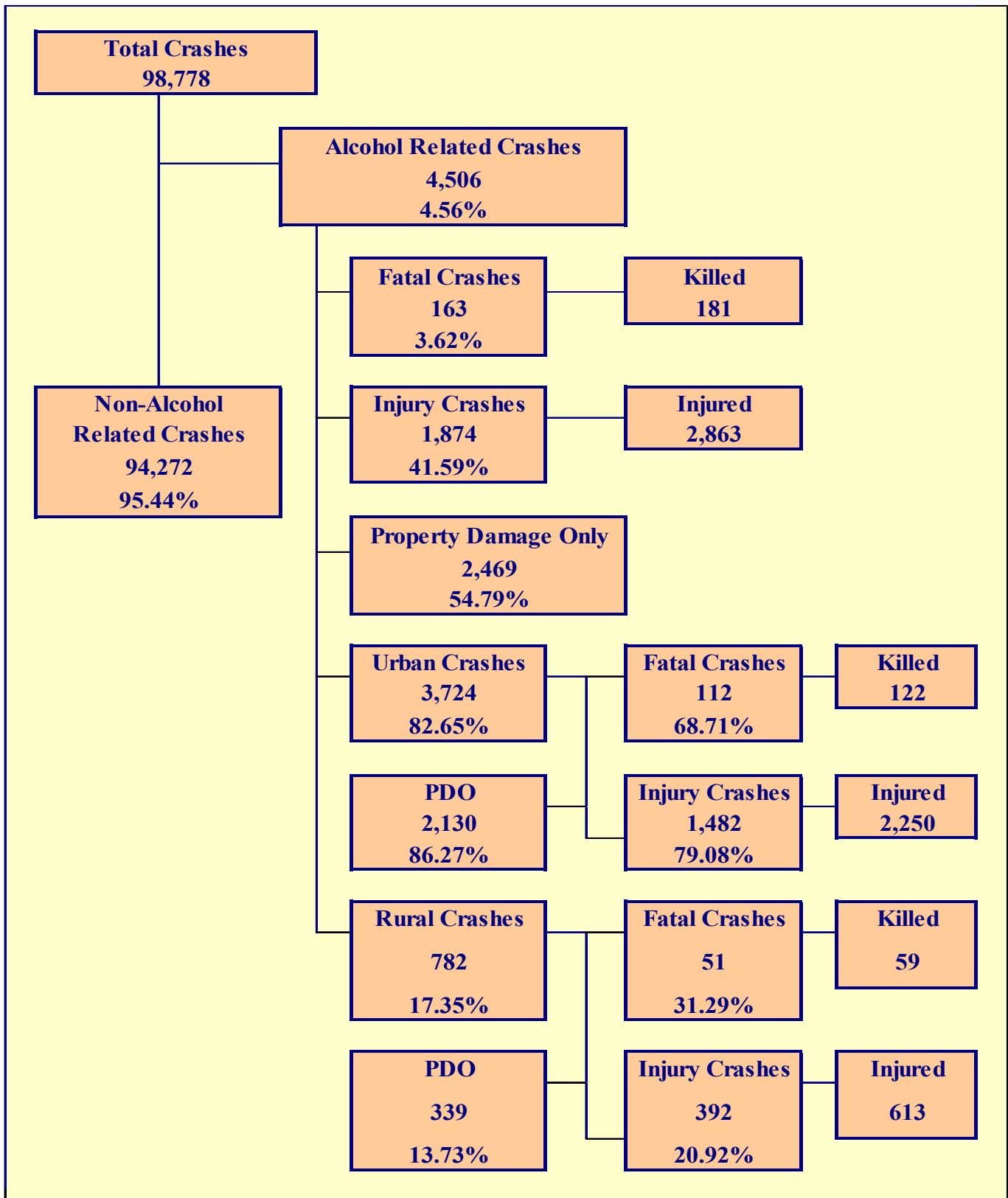
Distracted Driving Behavior

Type of Distraction	Number of Drivers							
	Total	Percent of Total	In Fatal Crashes	Percent of Fatal	In Injury Crashes	Percent of Injury	In PDO Crashes	Percent of PDO
Not Distracted	140,037	73.83%	672	44.86%	41,722	74.84%	97,643	73.73%
Talking on Hands Free Device	168	0.09%	3	0.20%	57	0.10%	108	0.08%
Talking on Hand Held Device	298	0.16%	1	0.07%	84	0.15%	213	0.16%
Passenger	614	0.32%	3	0.20%	233	0.42%	378	0.29%
Other Activity with an Electronic Device	967	0.51%	1	0.07%	305	0.55%	661	0.50%
Manually Operating an Electronic Device	639	0.34%	5	0.33%	178	0.32%	456	0.34%
Other Inside the Vehicle (eating, drinking, etc.)	2,182	1.15%	9	0.60%	690	1.24%	1,483	1.12%
Outside the Vehicle (includes unspecified distractions)	1,853	0.98%	8	0.53%	580	1.04%	1,265	0.96%
Distracted Unknown Reason	1,389	0.73%	9	0.60%	502	0.90%	878	0.66%
Unknown	41,525	21.89%	787	52.54%	11,398	20.45%	29,340	22.16%
TOTAL	189,672	100.00%	1,498	100.00%	55,749	100.00%	132,425	100.00%

Table 5 – 14

Secondary Crashes

Secondary Crash	Number of Crashes				Number of Persons	
	Total	Fatal	Injury	PDO	Killed	Injured
Yes	1,679	18	545	1,116	22	902
No	77,081	787	22,448	53,846	861	32,389
Unknown	20,018	165	5,617	14,236	174	8,059
TOTAL	98,778	970	28,610	69,198	1,057	41,350



Section 6: – Alcohol Related Crashes

The statistics in the Alcohol Related section represent those crashes where the investigating officer indicated that a driver, pedestrian, or pedalcyclist had been drinking an alcoholic beverage and may or may not be substantiated by a blood or breath test. No assumption is to be made that the person was legally intoxicated (blood alcohol content of 0.08% or higher) at the time of the crash.

**Table 6 – 1
Economic Loss Due to Alcohol Related Crashes in Arizona for 2020**

Fatalities	\$1,722,282,151
Suspected Serious Injuries	\$276,900,997
Suspected Minor Injuries	\$186,564,132
Possible Injuries	\$114,387,805
Property Damage Only	\$26,368,920
TOTAL	\$2,326,504,005

Refer to note on Page 4 for Economic Loss Estimates

**Table 6 – 2
Alcohol Related Crash History**

Year	Alcohol Related Crashes	Percent of all Crashes	Persons Killed	Percent of all Fatalities	Persons Injured	Percent of all Injuries
2016	4,965	3.90%	302	31.72%	3,351	5.88%
2017	4,921	3.85%	325	32.57%	3,181	5.69%
2018	4,705	3.68%	265	26.21%	3,014	5.61%
2019	4,944	3.79%	258	26.33%	2,999	5.55%
2020	4,506	4.56%	181	17.12%	2,863	6.92%

**Table 6 – 3
Manner of Collision in Alcohol Related Crashes**

Manner of Collision Type	Number of Crashes							
	Total	Percent of All Crashes	Fatal	Percent of Fatal Crashes	Injury	Percent of Injury Crashes	PDO	Percent of PDO Crashes
Angle	386	14.48%	17	14.53%	182	15.76%	187	13.42%
Left Turn	270	10.13%	7	5.98%	148	12.81%	115	8.26%
Rear End	1,062	39.85%	20	17.09%	444	38.44%	598	42.93%
Head-On	192	7.20%	16	13.68%	87	7.53%	89	6.39%
Sideswipe (same)	343	12.87%	3	2.56%	111	9.61%	229	16.44%
Sideswipe (opposite)	125	4.69%	8	6.84%	29	2.51%	88	6.32%
U-Turn	12	0.45%	0	0.00%	6	0.52%	6	0.43%
Other*	260	9.76%	46	39.32%	144	12.47%	70	5.03%
Unknown	15	0.56%	0	0.00%	4	0.35%	11	0.79%
TOTAL	2,665	100.00%	117	100.00%	1,155	100.00%	1,393	100.00%

Note: Includes only multi-vehicle alcohol related crashes

*Other includes pedestrian and pedalcyclist crashes

Section 6: – Alcohol Related Crashes

Table 6 – 4
Alcohol Related Crashes by First Harmful Event

First Harmful Event Type	Number of Crashes				Number of Persons	
	Total	Fatal	Injury	PDO	Killed	Injured
Collision with Motor Vehicle in Transport	2,032	63	911	1,058	75	1,668
Overturning	170	13	122	35	15	159
Collision with Pedestrian	140	35	105	0	35	114
Collision with Pedalcyclist	13	4	9	0	4	10
Collision with Animal	3	1	1	1	1	1
Collision with Fixed Object	1,667	41	610	1,016	45	763
Collision with Non-fixed Object*	438	6	96	336	6	117
Vehicle Fire or Explosion	2	0	0	2	0	0
Other Non-collision**	5	0	4	1	0	4
Unknown	36	0	16	20	0	27
TOTAL	4,506	163	1,874	2,469	181	2,863
*Includes Collision with Parked Vehicles, Trains, Railway Vehicles, and Work Zone Equipment						
**Includes Vehicle Immersion, Jackknife, and Cargo Loss or Shift						

Table 6 – 5
Alcohol Related Crashes by Vehicle Type

Motor Vehicle Type	Number of Vehicles				
	Total	Percent of Total	In Fatal Crashes	In Injury Crashes	In PDO Crashes
Passenger Cars (Sedans, Convertibles, etc.)	2,420	54.938%	54	943	1,423
Station Wagons	727	16.504%	28	290	409
Pickup Trucks	744	16.890%	28	312	404
Vans	46	1.044%	2	20	24
Truck Tractor (with or without Semi-Trailer)	3	0.068%	0	3	0
Concrete Mixer Trucks	0	0.000%	0	0	0
Dump Trucks	0	0.000%	0	0	0
Garbage Trucks	0	0.000%	0	0	0
Tanker Trucks	0	0.000%	0	0	0
Wrecker or Tow Trucks	0	0.000%	0	0	0
Other Truck Combinations	140	3.178%	0	47	93
School Bus	1	0.023%	0	0	1
Commercial or Non-Commercial Bus	0	0.000%	0	0	0
Motorcycle (two or three wheel)	106	2.406%	20	80	6
All Terrain Vehicle or Cycle	20	0.454%	5	13	2
Golf Carts	2	0.045%	0	2	0
Moped	2	0.045%	1	1	0
Recreational Vehicle	1	0.023%	0	1	0
Motor Home or House Car	0	0.000%	0	0	0
Fire Trucks	0	0.000%	0	0	0
Ambulances	1	0.023%	0	0	1
Other Types Of Vehicles	3	0.068%	0	1	2
Vehicle Type Unknown	189	4.291%	1	75	113
TOTAL	4,405	100.00%	139	1,788	2,478

Section 6: – Alcohol Related Crashes

Table 6 – 6
Lighting Conditions in Alcohol Related Crashes

Type of Lighting Conditions	Number of Crashes				Number of Persons	
	Total	Fatal	Injury	PDO	Killed	Injured
Daylight	1,392	39	593	760	43	919
Dawn	60	2	24	34	2	39
Dusk	151	6	61	84	8	108
Dark - Lighted	2,225	71	877	1,277	76	1,310
Dark - Not Lighted	628	41	301	286	46	461
Dark - Unknown Lighting	32	3	12	17	5	14
Unknown	18	1	6	11	1	12
TOTAL	4,506	163	1,874	2,469	181	2,863

Table 6 – 7
Road Surface Conditions in Alcohol Related Crashes

Type of Road Surface Condition	Number of Drivers				Number of Persons	
	Total	In Fatal Crashes	In Injury Crashes	In PDO Crashes	Killed	Injured
Dry	4,214	126	1,720	2,368	163	2,734
Wet	120	4	48	68	5	84
Snow/Slush	3	0	1	2	0	3
Ice/Frost	11	0	2	9	0	4
Water (standing or moving)	3	0	0	3	0	0
Mud, Dirt, Gravel, Sand	23	1	10	12	1	18
Other	4	0	2	2	0	2
Unknown	27	8	5	14	12	18
TOTAL	4,405	139	1,788	2,478	181	2,863

Table 6 – 8
Gender of Drivers Involved in Alcohol Related Crashes

Gender of Driver	Number of Drivers							
	Total	Percent of Total	In Fatal Crashes	Percent of Fatal	In Injury Crashes	Percent of Injury	In PDO Crashes	Percent of PDO
Male	3,230	73.33%	112	80.58%	1,328	74.27%	1,790	72.24%
Female	1,147	26.04%	27	19.42%	451	25.22%	669	27.00%
Unknown	28	0.64%	0	0.00%	9	0.50%	19	0.77%
TOTAL	4,405	100.00%	139	100.00%	1,788	100.00%	2,478	100.00%

*In total crashes across the state, 55% of the drivers were males.
When alcohol was involved, males accounted for 73.33% of the drivers.*

Section 6: – Alcohol Related Crashes

Table 6 – 9
Driver Involvement by Age in Alcohol Related Crashes

Driver Age Group	Number of Drivers							
	Total	Percent of Total	In Fatal Crashes	Percent of Fatal	In Injury Crashes	Percent of Injury	In PDO Crashes	Percent of PDO
15 & Under	6	0.14%	1	0.72%	0	0.00%	5	0.20%
16	17	0.39%	1	0.72%	5	0.28%	11	0.44%
17	25	0.57%	0	0.00%	11	0.62%	14	0.56%
18	64	1.45%	3	2.16%	21	1.17%	40	1.61%
19	71	1.61%	3	2.16%	24	1.34%	44	1.78%
20	101	2.29%	0	0.00%	54	3.02%	47	1.90%
21	156	3.54%	4	2.88%	68	3.80%	84	3.39%
22	187	4.25%	7	5.04%	75	4.19%	105	4.24%
23	155	3.52%	9	6.47%	65	3.64%	81	3.27%
24	176	4.00%	5	3.60%	82	4.59%	89	3.59%
25-34	1,436	32.60%	39	28.06%	596	33.33%	801	32.32%
35-44	872	19.80%	30	21.58%	342	19.13%	500	20.18%
45-54	500	11.35%	12	8.63%	206	11.52%	282	11.38%
55-64	423	9.60%	17	12.23%	161	9.00%	245	9.89%
65-74	139	3.16%	4	2.88%	57	3.19%	78	3.15%
75 & Older	27	0.61%	4	2.88%	6	0.34%	17	0.69%
Unknown	50	1.14%	0	0.00%	15	0.84%	35	1.41%
TOTAL	4,405	100.00%	139	100.00%	1,788	100.00%	2,478	100.00%

Table 6 – 10
When Alcohol Related Crashes Occurred in 2020

Time of Day	Total	Weekday	Weekend*
Daytime**	1,288	805	483
Nighttime	3,218	1,342	1,876
Total	4,506	2,147	2,359
*Weekend begins at 6:00 p.m. on Friday and continues until 6:00 a.m. Monday. All other times and days are considered Weekdays.			
**Daytime refers to the hours between 6:00 a.m. and 6:00 p.m.			

Table 6 – 11
Safety Device Usage for Drinking Drivers

Severity of Injury	Safety Device Not Used	Lap Belt	Lap & Shoulder Belt	Protective Helmet	Other	Unknown	Totals
No Injury	116	35	1,826	4	4	830	2,815
Unknown Injury	4	0	40	0	0	129	173
Possible Injury	44	6	282	0	0	131	463
Suspected Minor Injury	132	2	345	9	1	154	643
Suspected Serious Injury	100	1	63	15	0	67	246
Fatal Injury	32	1	12	8	0	12	65
TOTALS	428	45	2,568	36	5	1,323	4,405

Section 6: – Alcohol Related Crashes

Table 6 – 12

Persons Killed and Injured in Alcohol Related Crashes

Age of Victim	Persons Killed			Persons Injured			
	Total	Male	Female	Total	Male	Female	Gender Unknown
0-4	0	0	0	40	24	16	0
5-9	2	1	1	36	18	18	0
10-14	5	1	4	53	24	29	0
15-19	9	6	3	212	124	88	0
20-24	26	22	4	462	288	174	0
25-34	33	27	6	793	513	280	0
35-44	34	23	11	502	346	156	0
45-54	26	17	9	332	213	119	0
55-64	32	25	7	260	169	91	0
65-74	10	7	3	105	68	37	0
75 & Older	4	1	3	36	22	14	0
Unknown	0	0	0	32	21	5	6
TOTAL	181	130	51	2,863	1,830	1,027	6

Table 6 – 13

Alcohol Related Crashes by County

County	Number of Crashes				Number of Persons	
	Total	Fatal	Injury	PDO	Killed	Injured
Apache	30	3	20	7	3	29
Cochise	30	2	10	18	2	11
Coconino	159	7	76	76	8	109
Gila	77	1	47	29	1	87
Graham	29	3	12	14	5	27
Greenlee	2	0	1	1	0	3
La Paz	27	3	12	12	4	20
Maricopa	2,834	74	1,115	1,645	81	1,730
Mohave	173	9	78	86	10	117
Navajo	66	7	29	30	7	42
Pima	578	43	242	293	48	350
Pinal	187	4	95	88	4	147
Santa Cruz	9	0	4	5	0	5
Yavapai	193	5	88	100	6	117
Yuma	112	2	45	65	2	69
TOTAL	4,506	163	1,874	2,469	181	2,863

Section 6: – Alcohol Related Crashes

Chart 6 – 1

All Alcohol Related Crashes vs. Fatal Alcohol Related Crashes by Day of Week

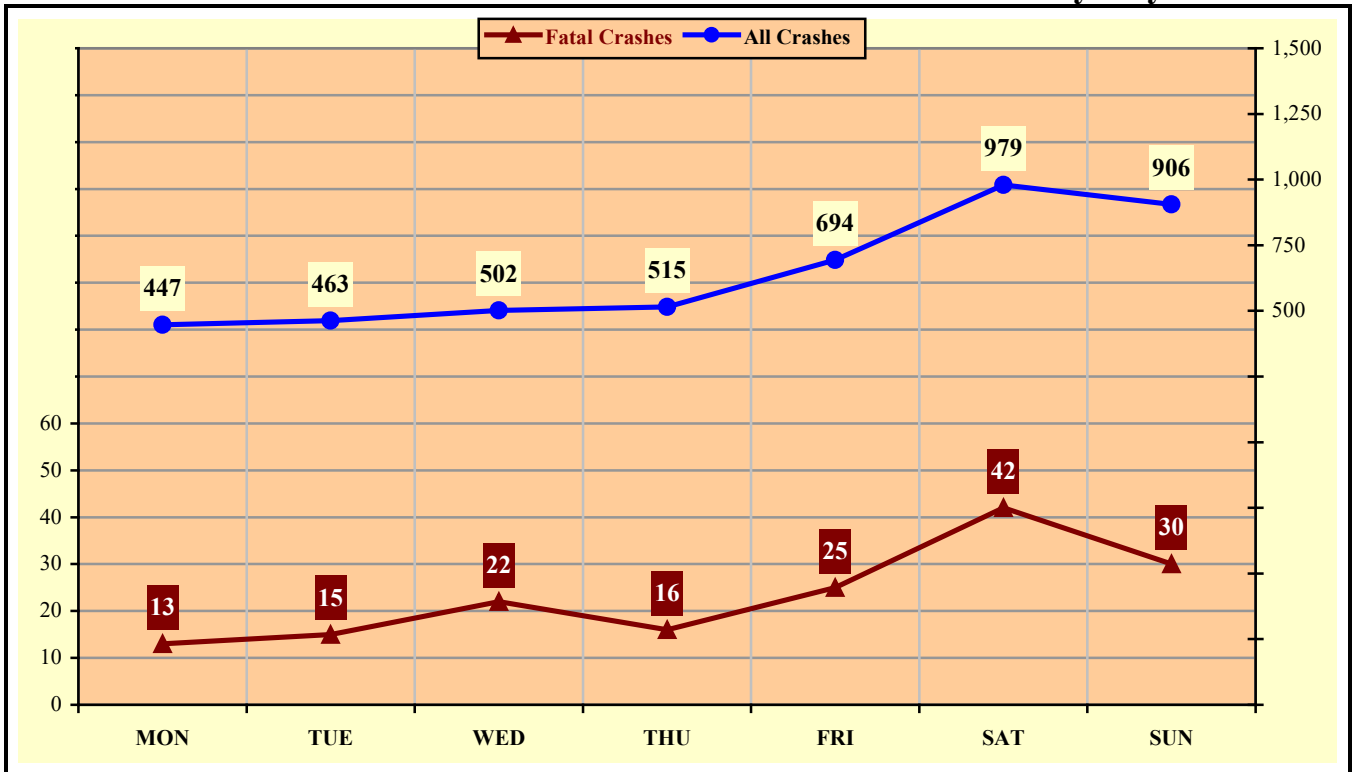
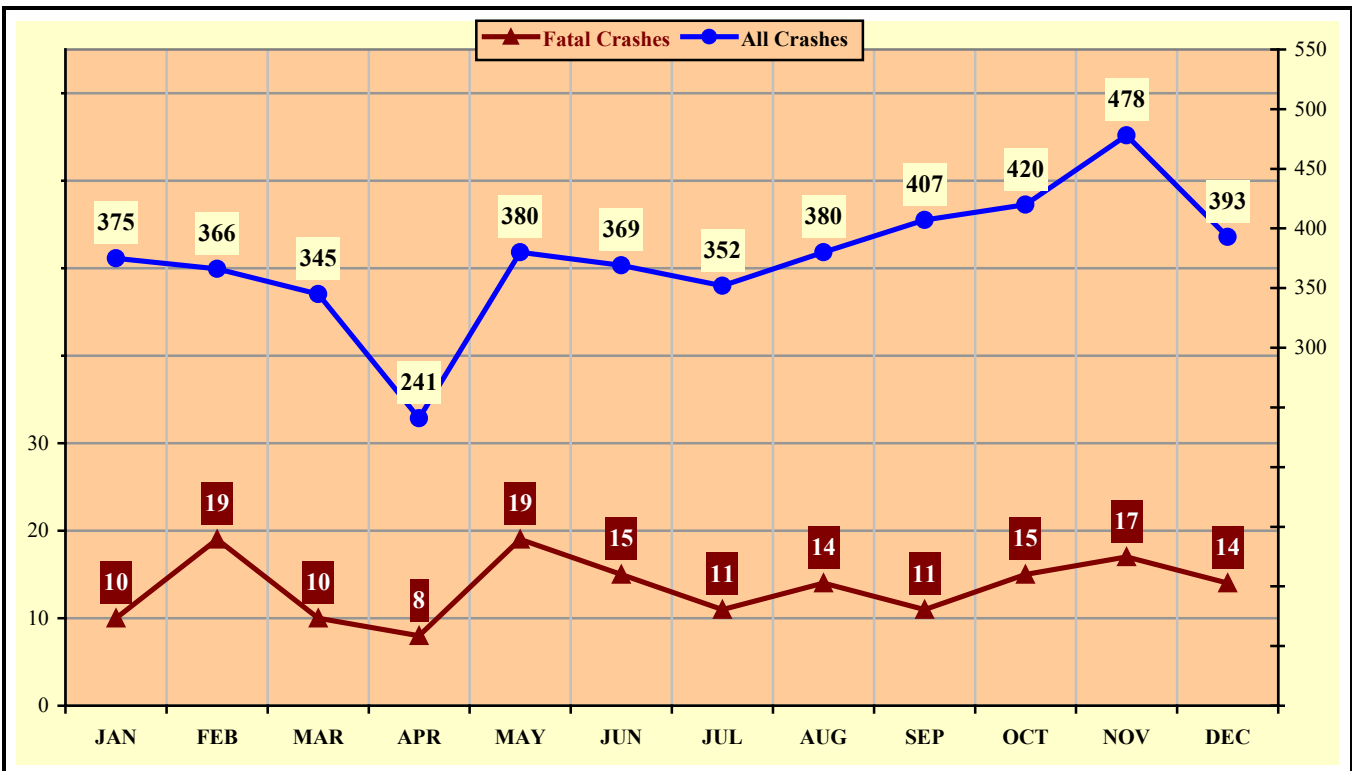


Chart 6 – 2

All Alcohol Related Crashes vs. Fatal Alcohol Related Crashes by Month



Section 6: – Alcohol Related Crashes

Chart 6 – 3

All Alcohol Related Crashes vs. Fatal Alcohol Related Crashes - Weekdays

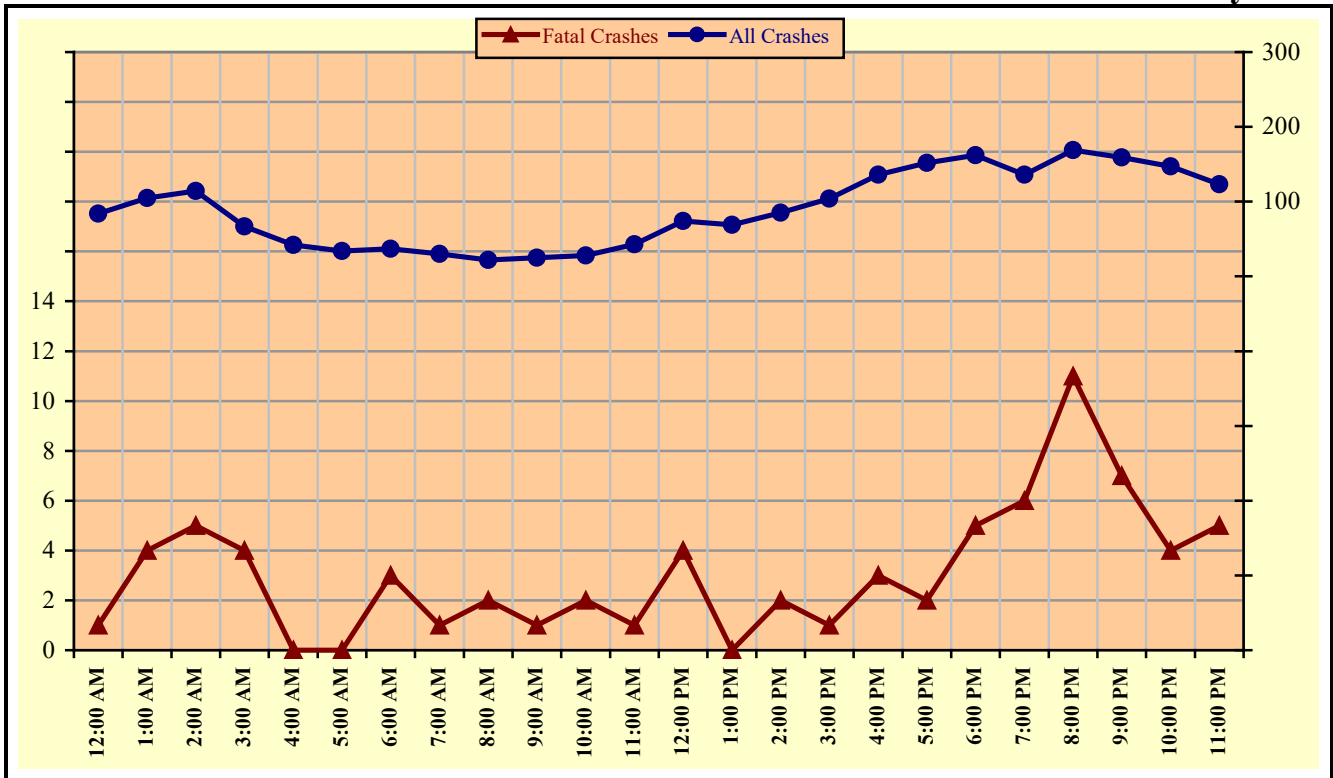
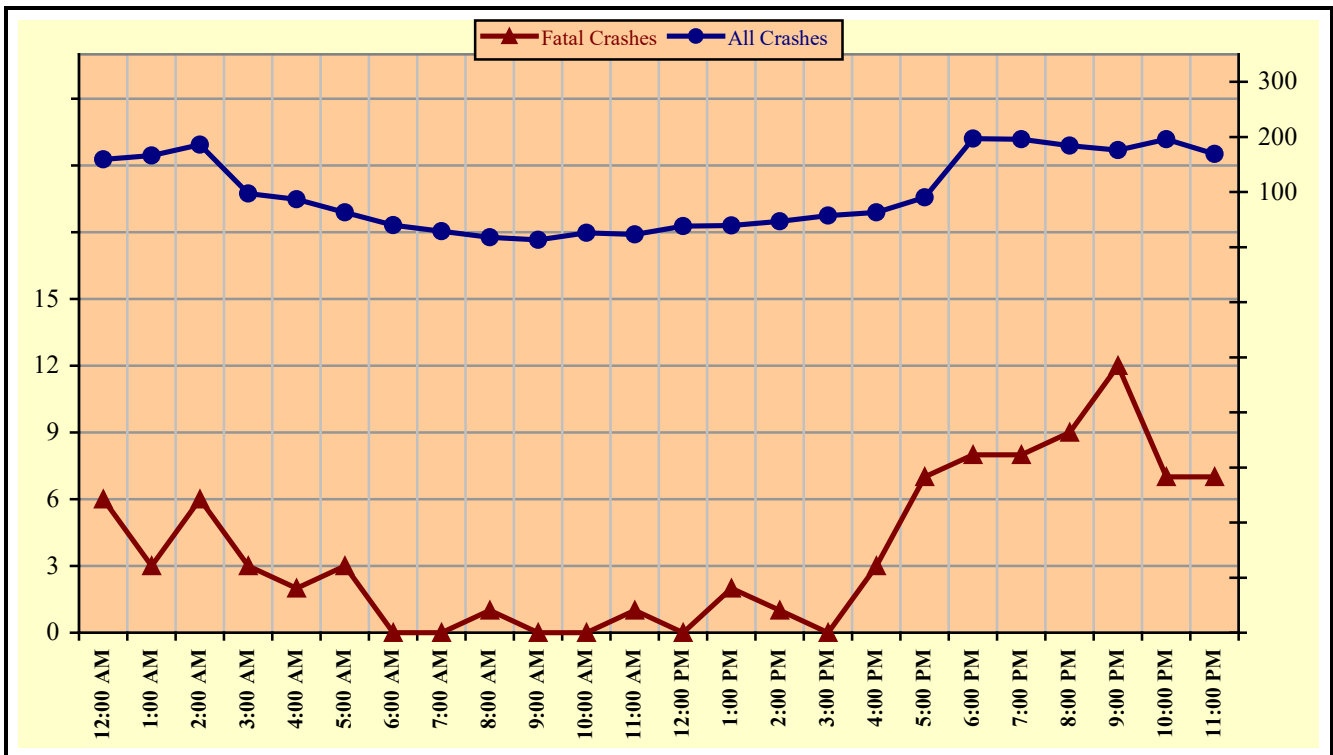


Chart 6 – 4

All Alcohol Related Crashes vs. Fatal Alcohol Related Crashes - Weekends



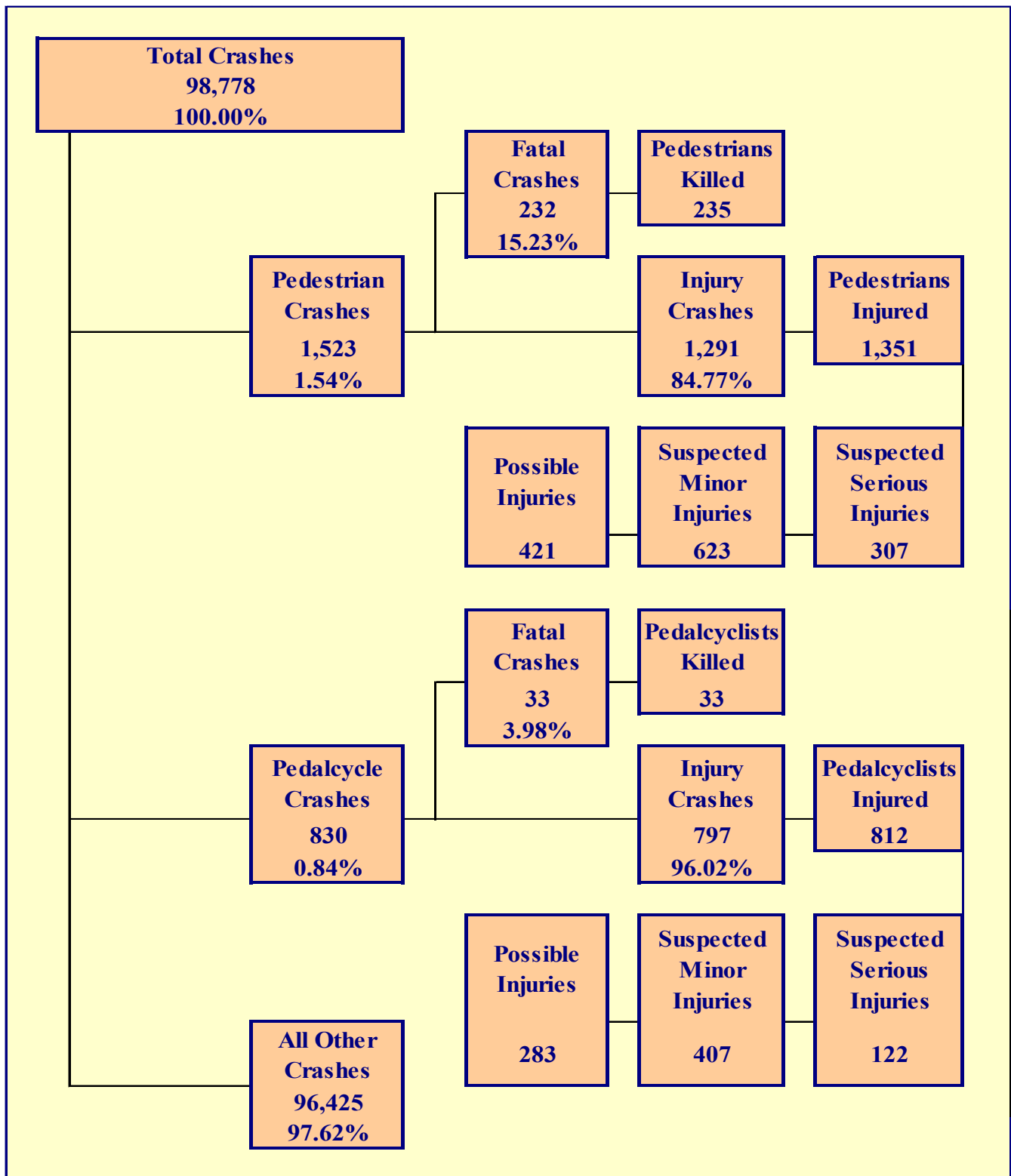
Section 6: – Alcohol Related Crashes

Table 6 – 14

Alcohol Related Crashes by Hour and Day of Week

Hour Beginning	Total Crashes		Monday		Tuesday		Wednesday		Thursday		Friday		Saturday		Sunday		Weekdays		Weekends	
	All	Fatal	All	Fatal	All	Fatal	All	Fatal	All	Fatal	All	Fatal	All	Fatal	All	Fatal	All	Fatal	All	Fatal
12:00 AM	243	7	31	0	18	0	16	0	26	1	24	0	58	2	70	4	84	1	159	6
1:00 AM	271	7	23	0	16	0	27	1	22	0	40	3	57	1	86	2	105	4	166	3
2:00 AM	300	11	27	2	24	1	26	2	26	1	38	1	75	1	84	3	114	5	186	6
3:00 AM	164	7	16	0	10	2	19	1	18	1	20	0	38	1	43	2	67	4	97	3
4:00 AM	129	2	13	0	6	0	13	0	12	0	11	0	31	0	43	2	42	0	87	2
5:00 AM	97	3	6	0	6	0	7	0	5	0	16	0	25	2	32	1	34	0	63	3
6:00 AM	77	3	6	1	5	0	7	1	8	1	11	0	22	0	18	0	37	3	40	0
7:00 AM	59	1	10	0	4	0	10	1	2	0	4	0	15	0	14	0	30	1	29	0
8:00 AM	40	3	2	1	5	0	6	0	3	0	6	1	9	1	9	0	22	2	18	1
9:00 AM	38	1	2	0	7	1	5	0	4	0	7	0	7	0	6	0	25	1	13	0
10:00 AM	54	2	6	0	7	0	6	1	6	1	3	0	10	0	16	0	28	2	26	0
11:00 AM	66	2	8	1	8	0	10	0	11	0	6	0	14	1	9	0	43	1	23	1
12:00 PM	112	4	16	1	12	0	10	0	17	1	19	2	16	0	22	0	74	4	38	0
1:00 PM	108	2	15	0	9	0	12	0	18	0	15	0	23	1	16	1	69	0	39	2
2:00 PM	132	3	15	1	26	0	11	0	16	0	17	1	22	0	25	1	85	2	47	1
3:00 PM	161	1	15	0	26	0	24	1	20	0	19	0	22	0	35	0	104	1	57	0
4:00 PM	199	6	29	1	31	1	26	0	18	0	32	1	38	2	25	1	136	3	63	3
5:00 PM	242	9	20	0	25	0	31	1	28	0	48	1	52	5	38	2	152	2	90	7
6:00 PM	359	13	40	0	41	1	45	2	36	2	57	0	80	6	60	2	162	5	197	8
7:00 PM	332	14	30	0	28	1	35	3	43	2	64	3	69	5	63	0	136	6	196	8
8:00 PM	353	20	36	2	39	3	44	3	50	3	45	4	79	4	60	1	169	11	184	9
9:00 PM	335	19	28	1	45	3	38	2	48	1	62	2	67	6	47	4	159	7	176	12
10:00 PM	343	11	31	0	34	1	42	3	40	0	73	5	77	0	46	2	147	4	196	7
11:00 PM	292	12	22	2	31	1	32	0	38	2	57	1	73	4	39	2	123	5	169	7
TOTAL	4,506	163	447	13	463	15	502	22	515	16	694	25	979	42	906	30	2,147	74	2,359	89

Crashes during Weekends accounted for 52.35% of all Alcohol Related crashes and 54.60% of Alcohol Related Fatal Crashes.



Section 7: – Pedestrian and Pedalcyclist Crashes

Table 7 – 1

Pedestrians Killed and Injured By Age and Gender

Age Group	Pedestrians Killed			Pedestrians Injured		
	Total	Male	Female	Total	Male	Female
0-4	4	3	1	16	9	7
5-9	4	4	0	36	25	11
10-14	1	0	1	64	41	23
15-19	11	7	4	120	65	55
20-24	15	13	2	127	76	51
25-34	36	23	13	250	179	71
35-44	42	35	7	205	125	80
45-54	22	14	8	179	109	70
55-64	51	37	14	172	118	54
65-74	31	20	11	112	68	44
75 & Older	15	7	8	50	34	16
Unknown	3	2	1	20	16	4
TOTAL	235	165	70	1,351	865	486

Table 7 – 2

Pedestrian Crashes by Geographic Location

Category	Total	Urban	Percent of Total	Rural	Percent of Total
Total Crashes	1,523	1,405	92.25%	118	7.75%
Fatal Crashes	232	185	79.74%	47	20.26%
Injury Crashes	1,291	1,220	94.50%	71	5.50%
Pedestrians Killed	235	188	80.00%	47	20.00%
Pedestrians Injured	1,351	1,277	94.52%	74	5.48%

Table 7 – 3

Pedestrian Crash History

Year	Pedestrian Crashes	Percent of all Crashes	Pedestrians Killed	Percent of all Fatalities	Pedestrians Injured	Percent of all Injuries
2016	1,679	1.32%	193	20.27%	1,495	2.62%
2017	1,733	1.36%	226	22.65%	1,547	2.77%
2018	1,787	1.40%	245	24.23%	1,561	2.91%
2019	1,857	1.42%	218	22.24%	1,716	3.17%
2020	1,523	1.54%	235	22.23%	1,351	3.27%

Section 7: – Pedestrian and Pedalcyclist Crashes

Table 7 – 4

Pedestrians Killed by Age and Action

Pedestrian Action	Total	Age Group of Pedestrian											
		0-4	5-9	10-14	15-19	20-24	25-34	35-44	45-54	55-64	65-74	75 & Older	Unknown
Crossing Road	109	0	2	1	1	5	20	15	9	32	15	8	1
Walking With Traffic	12	0	0	0	0	1	2	3	1	4	1	0	0
Walking Against Traffic	11	0	0	0	1	0	1	0	3	3	2	1	0
Standing	22	1	0	0	2	2	5	5	0	4	2	1	0
Lying	7	0	0	0	0	0	2	3	1	0	1	0	0
Getting on/off Vehicle	2	0	0	0	0	0	0	2	0	0	0	0	0
Working on/pushing Veh	0	0	0	0	0	0	0	0	0	0	0	0	0
Working on Road	0	0	0	0	0	0	0	0	0	0	0	0	0
Other	16	2	0	0	1	1	3	2	3	2	0	2	0
Unknown	56	1	2	0	6	6	3	12	5	6	10	3	2
TOTAL	235	4	4	1	11	15	36	42	22	51	31	15	3

Table 7 – 5

Pedestrians Injured by Age and Action

Pedestrian Action	Total	Age Group of Pedestrian											
		0-4	5-9	10-14	15-19	20-24	25-34	35-44	45-54	55-64	65-74	75 & Older	Unknown
Crossing Road	838	8	26	44	78	81	141	121	112	113	73	29	12
Walking With Traffic	75	0	1	5	11	7	13	14	8	5	9	1	1
Walking Against Traffic	82	0	0	6	9	3	18	11	15	9	5	6	0
Standing	113	2	3	1	8	14	21	21	17	13	7	4	2
Lying	5	0	0	0	0	0	1	2	1	1	0	0	0
Getting on/off Vehicle	10	0	0	0	2	2	1	0	1	3	0	1	0
Working on/pushing Veh	1	0	0	0	0	0	1	0	0	0	0	0	0
Working on Road	9	0	0	0	0	2	1	3	2	0	1	0	0
Other	150	4	5	6	6	15	33	25	18	18	12	4	4
Unknown	68	2	1	2	6	3	20	8	5	10	5	5	1
TOTAL	1,351	16	36	64	120	127	250	205	179	172	112	50	20

Table 7 – 6

Pedestrian Physical Condition in Motor Vehicle Crashes

Type of Condition	Number of Pedestrians					
	Total	Percent of Total	In Fatal Crashes	Percent of Fatal	In Injury Crashes	Percent of Injury
No Apparent Influence	1,001	63.11%	59	23.51%	942	70.56%
Alcohol	123	7.76%	32	12.75%	91	6.82%
Illegal Drugs	30	1.89%	13	5.18%	17	1.27%
Medications	0	0.00%	0	0.00%	0	0.00%
Marijuana	2	0.13%	2	0.80%	0	0.00%
Illness or Physical Impairment	4	0.25%	0	0.00%	4	0.30%
Fell Asleep or Fatigued	1	0.06%	1	0.40%	0	0.00%
Other	12	0.76%	0	0.00%	12	0.90%
Unknown	413	26.04%	144	57.37%	269	20.15%
TOTAL	1,586	100.00%	251	100.00%	1,335	100.00%

Section 7: – Pedestrian and Pedalcyclist Crashes

Table 7 – 7

Lighting Conditions in Pedestrian Crashes

Type of Lighting Conditions	Number of Crashes		
	Total	Fatal	Injury
Daylight	682	41	641
Dawn	28	3	25
Dusk	30	3	27
Dark - Lighted	593	104	489
Dark - Not Lighted	147	50	97
Dark - Unknown Lighting	17	8	9
Unknown	26	23	3
TOTAL	1,523	232	1,291

Table 7 – 8

Weather Conditions in Pedestrian Crashes

Type of Weather Conditions	Number of Crashes		
	Total	Fatal	Injury
Clear	1,357	160	1,197
Cloudy	70	19	51
Sleet/Hail	1	0	1
Rain	34	3	31
Snow or Blowing Snow	1	0	1
Severe Crosswinds	0	0	0
Blowing Sand, Soil, Dirt	1	0	1
Fog, Smog, Smoke	0	0	0
Other	4	0	4
Unknown	55	50	5
TOTAL	1,523	232	1,291

Table 7 – 9

Pedalcyclists Killed and Injured by Age and Gender

Age Group	Pedalcyclists Killed			Pedalcyclists Injured		
	Total	Male	Female	Total	Male	Female
0-4	1	1	0	5	4	1
5-9	0	0	0	4	4	0
10-14	1	0	1	53	43	10
15-19	0	0	0	73	57	16
20-24	0	0	0	72	47	25
25-34	3	3	0	150	112	38
35-44	3	2	1	105	79	26
45-54	4	4	0	107	83	24
55-64	14	11	3	121	96	25
65-74	4	4	0	72	62	10
75 & Older	3	3	0	34	32	2
Unknown	0	0	0	16	15	1
TOTAL	33	28	5	812	634	178

Section 7: – Pedestrian and Pedalcyclist Crashes

Table 7 – 10

Pedalcycle Crashes by Geographic Location

Category	Total	Urban	Percent of Total	Rural	Percent of Total
Total Crashes	830	755	90.96%	75	9.04%
Fatal Crashes	33	20	60.61%	13	39.39%
Injury Crashes	797	735	92.22%	62	7.78%
Pedalcyclists Killed	33	21	63.64%	12	36.36%
Pedalcyclists Injured	812	745	91.75%	67	8.25%

Table 7 – 11

Pedalcycle Crash History

Year	Pedalcycle Crashes	Percent of all Crashes	Pedalcyclists Killed	Percent of all Fatalities	Pedalcyclists Injured	Percent of all Injuries
2016	1,518	1.19%	31	3.26%	1,389	2.44%
2017	1,523	1.19%	32	3.21%	1,406	2.51%
2018	1,291	1.01%	24	2.37%	1,194	2.22%
2019	1,279	0.98%	30	3.06%	1,262	2.33%
2020	830	0.84%	33	3.12%	812	1.96%

Table 7 – 12

Lighting Conditions in Pedalcyclist Crashes

Type of Lighting Conditions	Number of Crashes		
	Total	Fatal	Injury
Daylight	618	16	602
Dawn	12	2	10
Dusk	27	3	24
Dark - Lighted	141	4	137
Dark - Not Lighted	25	5	20
Dark - Unknown Lighting	2	1	1
Unknown	5	2	3
TOTAL	830	33	797

Table 7 – 13

Weather Conditions in Pedalcyclist Crashes

Type of Weather Conditions	Number of Crashes		
	Total	Fatal	Injury
Clear	765	28	737
Cloudy	44	1	43
Sleet/Hail	0	0	0
Rain	7	0	7
Snow or Blowing Snow	0	0	0
Severe Crosswinds	0	0	0
Blowing Sand, Soil, Dirt	0	0	0
Fog, Smog, Smoke	1	0	1
Other	0	0	0
Unknown	13	4	9
TOTAL	830	33	797

Section 7: – Pedestrian and Pedalcyclist Crashes

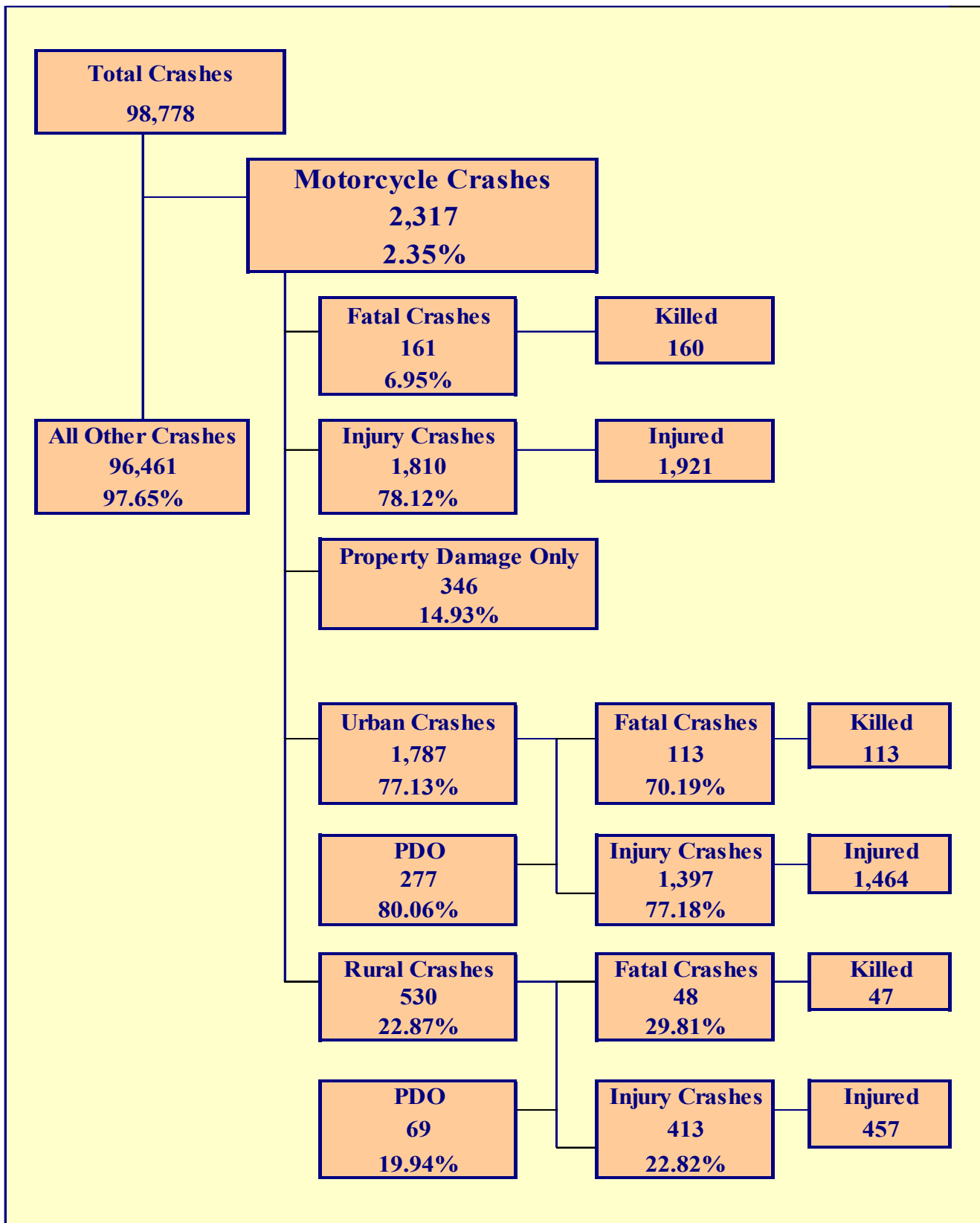
Table 7 – 14
Pedestrian Crashes by County

County	Number of Crashes			Number of Pedestrians	
	Total	Fatal	Injury	Killed	Injured
Apache	8	4	4	4	4
Cochise	12	3	9	3	9
Coconino	40	8	32	8	32
Gila	13	5	8	5	8
Graham	3	1	2	1	2
Greenlee	0	0	0	0	0
La Paz	1	1	0	1	0
Maricopa	1,076	143	933	145	976
Mohave	27	4	23	4	23
Navajo	10	4	6	4	6
Pima	241	44	197	45	212
Pinal	33	6	27	6	27
Santa Cruz	1	0	1	0	1
Yavapai	24	3	21	3	23
Yuma	34	6	28	6	28
TOTAL	1,523	232	1,291	235	1,351

Maricopa and Pima Counties accounted for 80.85% of pedestrian fatalities.

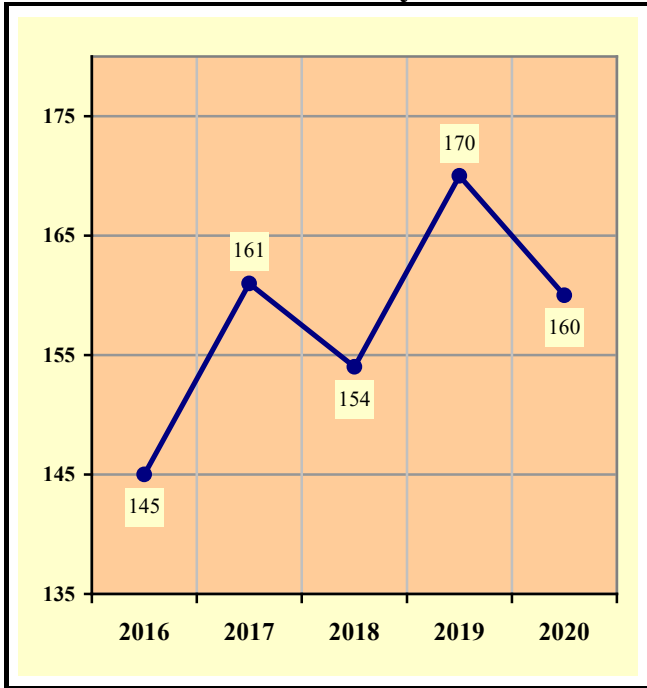
Table 7 – 15
Pedalcyclist Crashes by County

County	Number of Crashes			Number of Pedalcyclists	
	Total	Fatal	Injury	Killed	Injured
Apache	1	0	1	0	1
Cochise	12	4	8	4	8
Coconino	19	1	18	1	18
Gila	2	0	2	0	2
Graham	1	1	0	1	1
Greenlee	0	0	0	0	0
La Paz	0	0	0	0	0
Maricopa	576	15	561	16	571
Mohave	13	0	13	0	13
Navajo	5	1	4	1	4
Pima	126	7	119	7	120
Pinal	43	2	41	2	43
Santa Cruz	2	1	1	1	1
Yavapai	16	1	15	0	16
Yuma	14	0	14	0	14
TOTAL	830	33	797	33	812



Section 8: – Motorcycle (MC) Crashes

**Chart 8 – 1
MC Fatalities by Year**

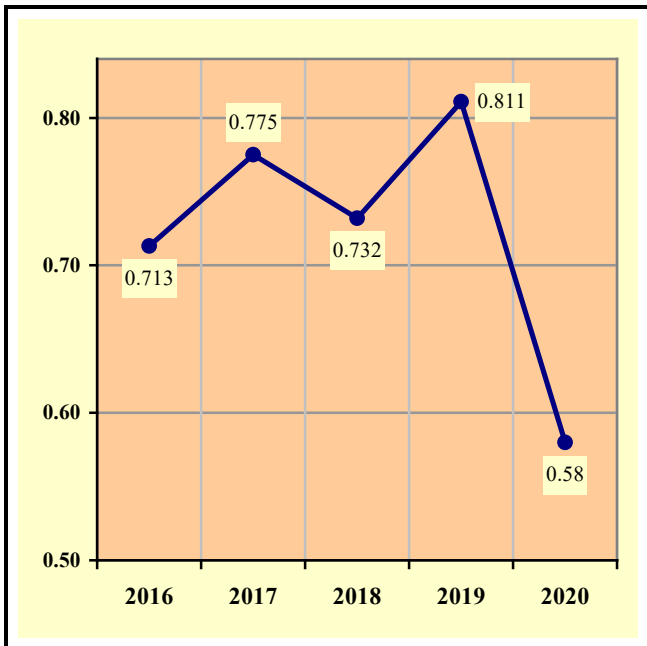


**Chart 8 – 2
MC Registrations in Arizona**

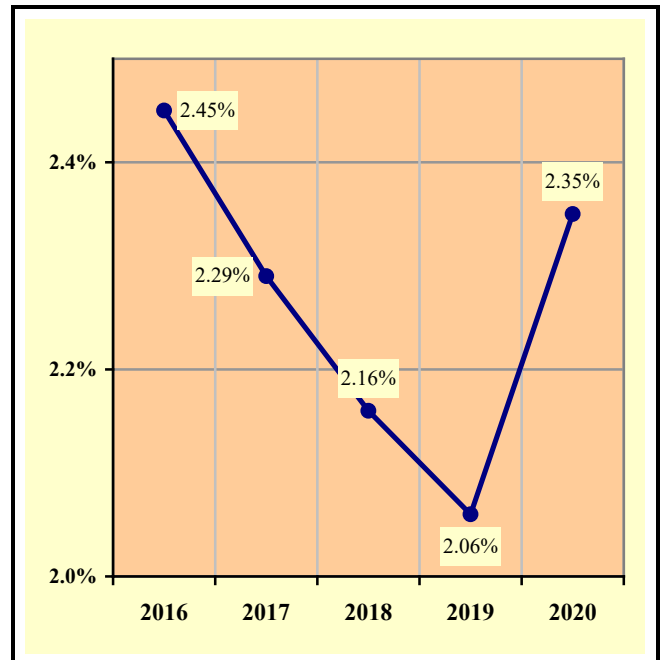


Total Point-in-Time of Registered Motorcycles at the end of
Calendar year 2020.
(Source: MVD - MV988 MV630419 Currently Registered Vehicles by County
Listing (motorcycle sub category), reports dated 12/31/2020.)

**Chart 8 – 3
Fatality Rate per Registered MC**



**Chart 8 – 4
Percent of MC Crashes to All Crashes**



Section 8: – Motorcycle (MC) Crashes

Table 8 – 1
MC Crashes by First Harmful Event

First Harmful Event Type	Number of Crashes			
	Total	Fatal	Injury	PDO
Collision with Motor Vehicle in Transport	1,309	95	961	253
Overturning	323	20	284	19
Collision with Pedestrian	15	1	14	0
Collision with Pedalcyclist	7	1	6	0
Collision with Animal	22	0	19	3
Collision with Fixed Object	455	35	382	38
Collision with Non-fixed Object*	85	2	59	24
Vehicle Fire or Explosion	5	0	3	2
Other Non-collision**	60	1	54	5
Unknown	36	6	28	2
TOTAL	2,317	161	1,810	346
*Includes Collision with Parked Vehicles, Trains, Railway Vehicles, and Work Zone Equipment				
**Includes Vehicle Immersion, Jackknife, and Cargo Loss or Shift				

Table 8 – 2
Lighting Conditions in MC Crashes

Type of Lighting Conditions	Number of Crashes			
	Total	Fatal	Injury	PDO
Daylight	1,533	81	1,206	246
Dawn	37	2	30	5
Dusk	86	7	65	14
Dark - Lighted	492	44	384	64
Dark - Not Lighted	147	14	118	15
Dark - Unknown Lighting	7	3	3	1
Unknown	15	10	4	1
TOTAL	2,317	161	1,810	346

Table 8 – 3
Road Surface Conditions in MC Crashes

Type of Road Surface Condition	Number of Operators			
	Total	In Fatal Crashes	In Injury Crashes	In PDO Crashes
Dry	2,265	139	1,794	332
Wet	28	1	25	2
Snow/Slush	1	0	1	0
Ice/Frost	1	0	1	0
Water (standing or moving)	2	0	1	1
Mud, Dirt, Gravel, Sand	28	2	21	5
Other	6	0	6	0
Unknown	42	21	6	15
TOTAL	2,373	163	1,855	355

Section 8: – Motorcycle (MC) Crashes

Table 8 – 4

MC Crashes by Geographic Location

Category	Total	Urban	Percent of Total	Rural	Percent of Total
Total Crashes	2,317	1,787	77.13%	530	22.87%
Fatal Crashes	161	113	70.19%	48	29.81%
Injury Crashes	1,810	1,397	77.18%	413	22.82%
PDO Crashes	346	277	80.06%	69	19.94%
Persons Killed	160	113	70.63%	47	29.38%
Persons Injured	1,921	1,464	76.21%	457	23.79%

Table 8 – 5

Operator Involvement by Age in MC Crashes

Operator Age Group	Number of Operators							
	Total	Percent of Total	In Fatal Crashes	Percent of Fatal	In Injury Crashes	Percent of Injury	In PDO Crashes	Percent of PDO
15 & Under	15	0.63%	0	0.00%	13	0.70%	2	0.56%
16	10	0.42%	1	0.61%	9	0.49%	0	0.00%
17	9	0.38%	1	0.61%	8	0.43%	0	0.00%
18	41	1.73%	1	0.61%	36	1.94%	4	1.13%
19	47	1.98%	3	1.84%	38	2.05%	6	1.69%
20	63	2.65%	3	1.84%	51	2.75%	9	2.54%
21	69	2.91%	2	1.23%	60	3.23%	7	1.97%
22	73	3.08%	4	2.45%	56	3.02%	13	3.66%
23	73	3.08%	5	3.07%	63	3.40%	5	1.41%
24	72	3.03%	4	2.45%	60	3.23%	8	2.25%
25-34	530	22.33%	32	19.63%	424	22.86%	74	20.85%
35-44	383	16.14%	20	12.27%	314	16.93%	49	13.80%
45-54	382	16.10%	25	15.34%	303	16.33%	54	15.21%
55-64	344	14.50%	37	22.70%	258	13.91%	49	13.80%
65-74	157	6.62%	17	10.43%	123	6.63%	17	4.79%
75 & Older	31	1.31%	7	4.29%	21	1.13%	3	0.85%
Unknown	74	3.12%	1	0.61%	18	0.97%	55	15.49%
TOTAL	2,373	100.00%	163	100.00%	1,855	100.00%	355	100.00%

Table 8 – 6

MC Operator Physical Condition

Type of Condition	Number of Operators							
	Total	Percent of Total	In Fatal Crashes	Percent of Fatal	In Injury Crashes	Percent of Injury	In PDO Crashes	Percent of PDO
No Apparent Influence	1,905	80.28%	49	30.06%	1,575	84.91%	281	79.15%
Alcohol	106	4.47%	20	12.27%	80	4.31%	6	1.69%
Illegal Drugs	20	0.84%	15	9.20%	5	0.27%	0	0.00%
Medications	0	0.00%	0	0.00%	0	0.00%	0	0.00%
Marijuana	5	0.21%	4	2.45%	1	0.05%	0	0.00%
Illness or Physical Impairment	8	0.34%	0	0.00%	7	0.38%	1	0.28%
Fell Asleep or Fatigued	4	0.17%	0	0.00%	4	0.22%	0	0.00%
Other	9	0.38%	1	0.61%	5	0.27%	3	0.85%
Unknown	316	13.32%	74	45.40%	178	9.60%	64	18.03%
TOTAL	2,373	100.00%	163	100.00%	1,855	100.00%	355	100.00%

Section 8: – Motorcycle (MC) Crashes

Table 8 – 7

MC Operator’s Helmet Use

Severity of Injury	Helmet Used	Percent of Total	Helmet Not Used	Percent of Total	Unknown	Percent of Total	Total	Percent of Total
No Injury	166	14.16%	43	9.17%	152	20.77%	361	15.21%
Unknown Injury	11	0.94%	2	0.43%	42	5.74%	55	2.32%
Possible Injury	193	16.47%	63	13.43%	126	17.21%	382	16.10%
Suspected Minor Injury	517	44.11%	158	33.69%	268	36.61%	943	39.74%
Suspected Serious Injury	215	18.34%	136	29.00%	128	17.49%	479	20.19%
Fatal Injury	70	5.97%	67	14.29%	16	2.19%	153	6.45%
TOTALS	1,172	100.00%	469	100.00%	732	100.00%	2,373	100.00%

Table 8 – 8

MC Passenger’s Helmet Use

Severity of Injury	Helmet Used	Percent of Total	Helmet Not Used	Percent of Total	Unknown	Percent of Total	Total	Percent of Total
No Injury	12	17.39%	2	4.44%	7	19.44%	21	14.00%
Unknown Injury	1	1.45%	0	0.00%	4	11.11%	5	3.33%
Possible Injury	11	15.94%	5	11.11%	3	8.33%	19	12.67%
Suspected Minor Injury	31	44.93%	22	48.89%	11	30.56%	64	42.67%
Suspected Serious Injury	13	18.84%	10	22.22%	11	30.56%	34	22.67%
Fatal Injury	1	1.45%	6	13.33%	0	0.00%	7	4.67%
TOTALS	69	100.00%	45	100.00%	36	100.00%	150	100.00%

Table 8 – 9

Helmet Use by Gender

Gender	Number of Operators and Passengers							
	Helmet Used	Percent of Helmet Used	Helmet Not Used	Percent of Helmet Not Used	Helmet Use Unknown	Percent of Unknown	Total	Percent of Total
Male	1,087	87.59%	446	86.77%	656	85.42%	2,189	86.76%
Female	145	11.68%	67	13.04%	71	9.24%	283	11.22%
Unknown	9	0.73%	1	0.19%	41	5.34%	51	2.02%
TOTAL	1,241	100.00%	514	100.00%	768	100.00%	2,523	100.00%

Section 8: – Motorcycle (MC) Crashes

Table 8 – 10

MC Operators and Passengers Killed and Injured

Age of Victim	Persons Killed			Persons Injured			
	Total	Male	Female	Total	Male	Female	Gender Unknown
0-4	0	0	0	0	0	0	0
5-9	0	0	0	1	1	0	0
10-14	0	0	0	13	9	4	0
15-19	6	6	0	99	90	9	0
20-24	17	16	1	305	278	27	0
25-34	32	31	1	441	399	42	0
35-44	19	19	0	324	285	39	0
45-54	27	21	6	309	258	51	0
55-64	35	31	4	275	236	39	0
65-74	17	15	2	121	106	15	0
75 & Older	7	7	0	21	21	0	0
Unknown	0	0	0	12	9	1	2
TOTAL	160	146	14	1,921	1,692	227	2

Table 8 – 11

MC Operator Violations

Type of Violation or Behavior	Number of Operators							
	Total	Percent of Total	In Fatal Crashes	Percent of Fatal	In Injury Crashes	Percent of Injury	In PDO Crashes	Percent of PDO
No Improper Action	1,090	45.93%	41	25.15%	888	47.87%	161	45.35%
Speed too Fast for Conditions	532	22.42%	35	21.47%	429	23.13%	68	19.15%
Exceeded Lawful Speed	54	2.28%	14	8.59%	36	1.94%	4	1.13%
Failed to Yield Right-Of-Way	59	2.49%	6	3.68%	44	2.37%	9	2.54%
Followed Too Closely	76	3.20%	0	0.00%	52	2.80%	24	6.76%
Ran Stop Sign	12	0.51%	0	0.00%	12	0.65%	0	0.00%
Disregarded Traffic Signal	43	1.81%	8	4.91%	32	1.73%	3	0.85%
Made Improper Turn	12	0.51%	0	0.00%	7	0.38%	5	1.41%
Drove in Opposing Lane	3	0.13%	0	0.00%	3	0.16%	0	0.00%
Drove Left of Center Line	13	0.55%	4	2.45%	9	0.49%	0	0.00%
Passed in No-Passing Zone	10	0.42%	0	0.00%	10	0.54%	0	0.00%
Unsafe Lane Change	43	1.81%	2	1.23%	35	1.89%	6	1.69%
Failed to Keep in Proper Lane	98	4.13%	13	7.98%	71	3.83%	14	3.94%
Crossed Median	1	0.04%	0	0.00%	1	0.05%	0	0.00%
Aggressive Driving	8	0.34%	0	0.00%	7	0.38%	1	0.28%
Wrong Way Driving	0	0.00%	0	0.00%	0	0.00%	0	0.00%
Other	81	3.41%	6	3.68%	67	3.61%	8	2.25%
Unknown	238	10.03%	34	20.86%	152	8.19%	52	14.65%
TOTAL	2,373	100.00%	163	100.00%	1,855	100.00%	355	100.00%

Section 8: – Motorcycle (MC) Crashes

Chart 8 – 5

All MC Crashes vs. Fatal MC Crashes by Time of Day - Weekdays

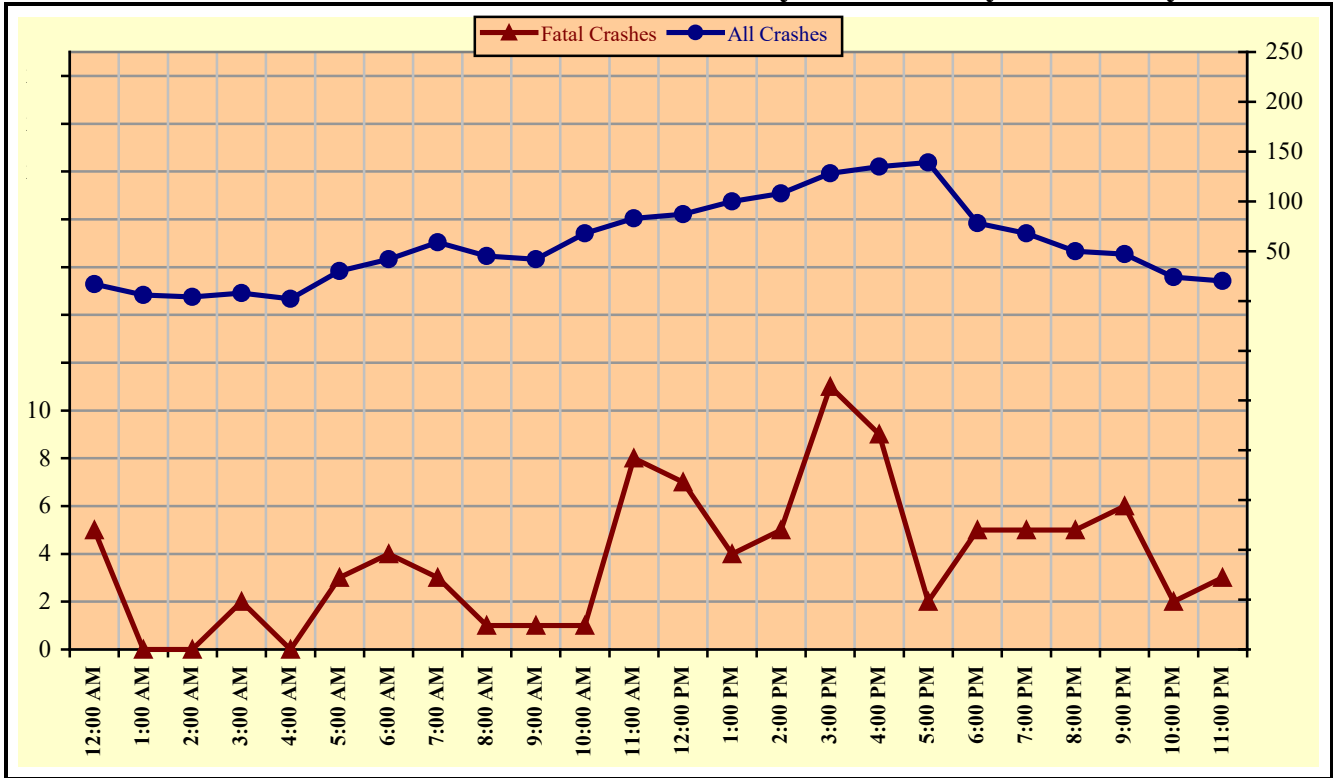
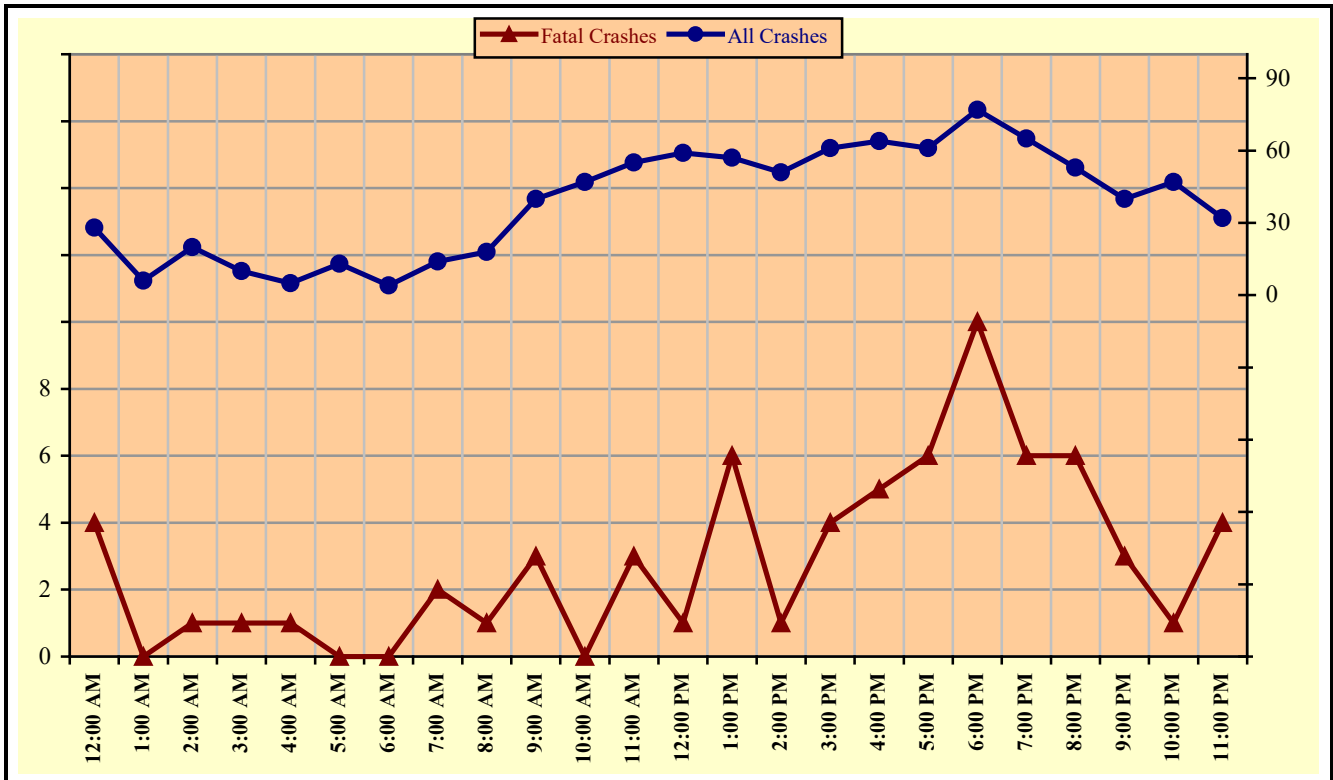


Chart 8 – 6

All MC Crashes vs. Fatal MC Crashes by Time of Day - Weekends



Section 8: – Motorcycle (MC) Crashes

Chart 8 – 7
All MC Crashes vs. Fatal MC Crashes by Day of Week

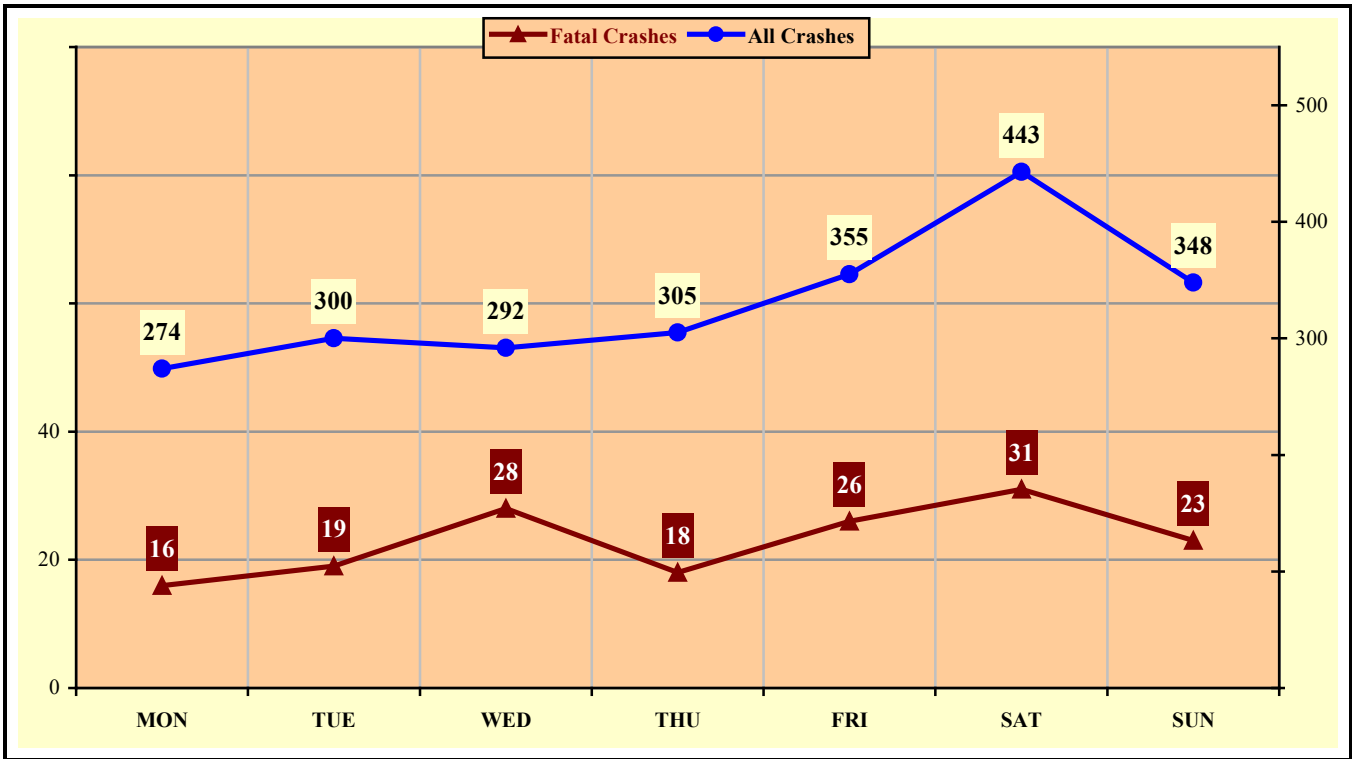
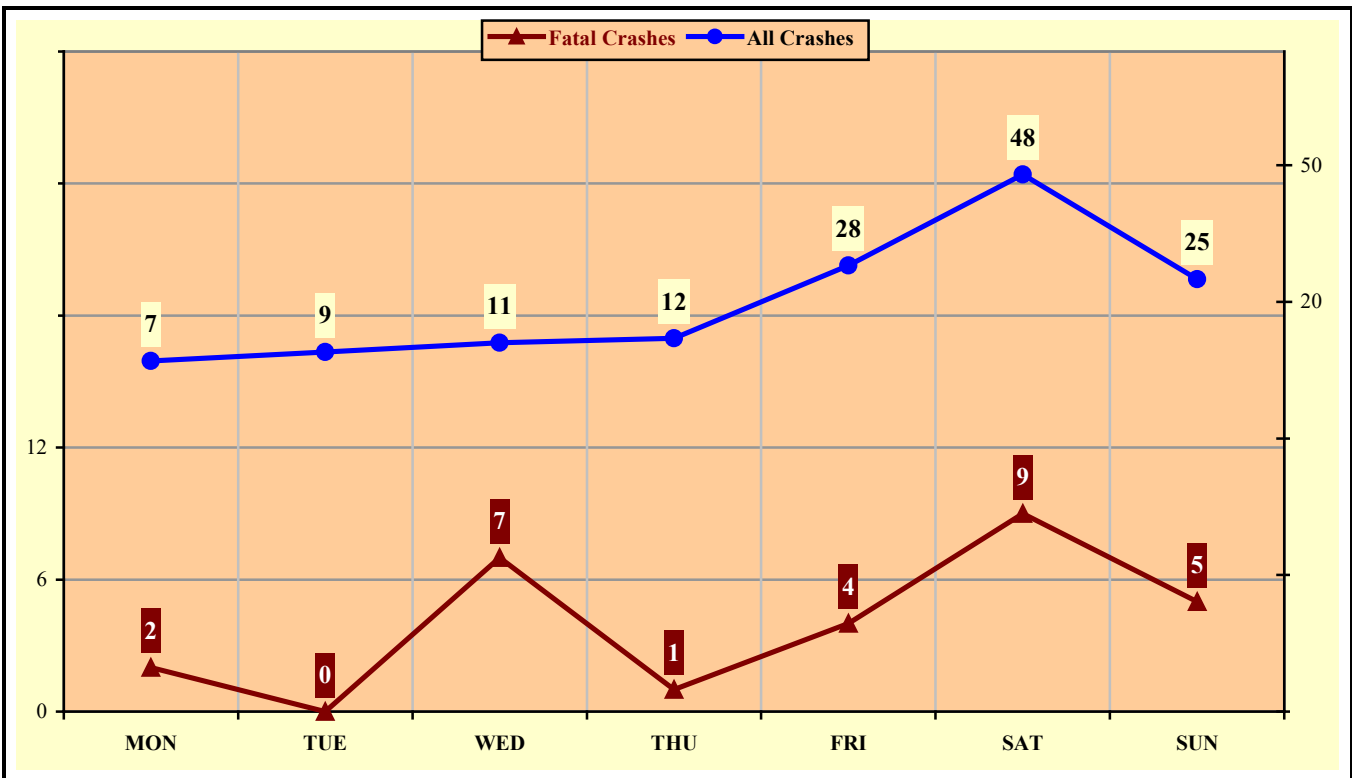


Chart 8 – 8
Alcohol Related MC Crashes vs. Fatal Alcohol Related MC Crashes by Day of Week



Section 8: – Motorcycle (MC) Crashes

Table 8 – 12
MC Crashes by Hour and Day of Week

Hour Beginning	Total Crashes		Monday		Tuesday		Wednesday		Thursday		Friday		Saturday		Sunday		Weekdays		Weekends	
	All	Fatal	All	Fatal	All	Fatal	All	Fatal	All	Fatal	All	Fatal	All	Fatal	All	Fatal	All	Fatal	All	Fatal
12:00 AM	45	9	6	1	2	0	4	2	6	2	5	1	9	1	13	2	17	5	28	4
1:00 AM	12	0	1	0	1	0	0	0	2	0	3	0	3	0	2	0	6	0	6	0
2:00 AM	24	1	1	0	0	0	2	0	1	0	1	0	6	0	13	1	4	0	20	1
3:00 AM	18	3	4	0	2	0	2	1	3	1	1	0	3	0	3	1	8	2	10	1
4:00 AM	7	1	1	1	1	0	0	0	0	0	1	0	2	0	2	0	2	0	5	1
5:00 AM	43	3	6	0	8	0	12	2	4	0	6	1	6	0	1	0	30	3	13	0
6:00 AM	46	4	6	0	8	0	11	2	10	1	7	1	2	0	2	0	42	4	4	0
7:00 AM	73	5	10	1	15	1	10	1	13	0	11	0	8	1	6	1	59	3	14	2
8:00 AM	63	2	9	0	9	1	9	0	8	0	10	0	6	0	12	1	45	1	18	1
9:00 AM	82	4	8	0	9	0	10	1	6	0	9	0	25	2	15	1	42	1	40	3
10:00 AM	115	1	12	0	14	0	12	1	16	0	14	0	24	0	23	0	68	1	47	0
11:00 AM	138	11	22	1	15	2	12	1	14	2	20	2	29	0	26	3	83	8	55	3
12:00 PM	146	8	18	2	19	1	9	1	17	0	24	3	35	1	24	0	87	7	59	1
1:00 PM	157	10	20	1	20	0	18	1	19	1	23	1	35	5	22	1	100	4	57	6
2:00 PM	159	6	18	2	31	0	20	2	20	1	19	0	34	0	17	1	108	5	51	1
3:00 PM	189	15	27	2	23	2	29	3	23	1	26	3	31	3	30	1	128	11	61	4
4:00 PM	199	14	17	0	21	1	31	5	31	2	35	1	31	3	33	2	135	9	64	5
5:00 PM	200	8	29	0	28	1	28	0	31	1	23	0	41	3	20	3	139	2	61	6
6:00 PM	155	15	20	0	22	3	17	0	19	2	24	2	28	6	25	2	78	5	77	10
7:00 PM	133	11	13	1	15	2	16	1	24	1	25	3	22	1	18	2	68	5	65	6
8:00 PM	103	11	9	2	15	1	11	1	15	1	15	3	22	3	16	0	50	5	53	6
9:00 PM	87	9	7	1	15	3	17	2	8	0	20	2	9	0	11	1	47	6	40	3
10:00 PM	71	3	6	0	5	1	5	1	8	0	22	1	16	0	9	0	24	2	47	1
11:00 PM	52	7	4	1	2	0	7	0	7	2	11	2	16	2	5	0	20	3	32	4
TOTAL	2,317	161	274	16	300	19	292	28	305	18	355	26	443	31	348	23	1,390	92	927	69

Crashes during Weekends accounted for 40.01% of all MC crashes and 42.86% of Fatal MC Crashes.

Section 8: – Motorcycle (MC) Crashes

Table 8 – 13

MC Crashes by County

County	Number of Crashes				Number of Persons	
	Total	Fatal	Injury	PDO	Killed	Injured
Apache	8	2	6	0	2	7
Cochise	28	2	24	2	2	27
Coconino	54	4	39	11	4	42
Gila	42	4	36	2	4	41
Graham	10	0	9	1	0	11
Greenlee	14	0	8	6	0	10
La Paz	8	2	5	1	2	5
Maricopa	1,473	85	1,143	245	84	1,198
Mohave	108	12	83	13	11	93
Navajo	12	0	10	2	0	12
Pima	273	28	211	34	29	224
Pinal	108	9	86	13	9	90
Santa Cruz	2	0	2	0	0	2
Yavapai	125	9	106	10	9	117
Yuma	52	4	42	6	4	42
TOTAL	2,317	161	1,810	346	160	1,921

Table 8 – 14

Manner of Collision in MC Crashes

Manner of Collision Type	Number of Crashes							
	Total	Percent of All Crashes	Fatal	Percent of Fatal Crashes	Injury	Percent of Injury Crashes	PDO	Percent of PDO Crashes
Angle	246	17.41%	25	23.58%	189	18.24%	32	11.81%
Left Turn	350	24.77%	37	34.91%	272	26.25%	41	15.13%
Rear End	414	29.30%	11	10.38%	290	27.99%	113	41.70%
Head-On	35	2.48%	9	8.49%	23	2.22%	3	1.11%
Sideswipe (same)	222	15.71%	5	4.72%	165	15.93%	52	19.19%
Sideswipe (opposite)	24	1.70%	3	2.83%	14	1.35%	7	2.58%
U-Turn	17	1.20%	3	2.83%	13	1.25%	1	0.37%
Other*	92	6.51%	10	9.43%	63	6.08%	19	7.01%
Unknown	13	0.92%	3	2.83%	7	0.68%	3	1.11%
TOTAL	1,413	100.00%	106	100.00%	1,036	100.00%	271	100.00%

Note: Includes only multi-vehicle MC crashes

*Other includes pedestrian and pedalcyclist crashes

Acknowledgements

Special gratitude to our other providers of data and information including:

The Information Technology Group, Arizona Department of Transportation

Motor Vehicle Division, Arizona Department of Transportation

Multimodal Planning Division, Arizona Department of Transportation

The Federal Highway Administration, U.S. Department of Transportation

National Highway Transportation Safety Administration