

ARIZONA

MOTOR VEHICLE CRASH FACTS

2021



2021 Motor Vehicle Crash Facts for the State of Arizona

*Prepared by:
The Arizona Department of Transportation
Transportation Systems Management and Operations*

Publication Date: September 7, 2022



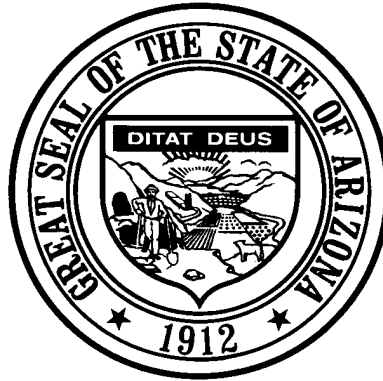
This publication is an annual statistical review of the motor vehicle crashes in the State of Arizona for the calendar year 2021. The results are compiled from Arizona Traffic Crash Reports submitted to the Arizona Department of Transportation by state, county, city, tribal, and other law enforcement agencies. Specific inquiries regarding the data in this report should be directed to:

**The Arizona Department of Transportation
Transportation Systems Management and Operations
Traffic Safety Section
1615 West Jackson Street
Phoenix, AZ 85007**

E-mail: azcrashfacts@azdot.gov

In order to provide the most current information, preliminary data is utilized when necessary. For this reason, previous or future reports may differ slightly and we encourage you to refer to the latest issue of Motor Vehicle Crash Facts.

This issue as well as previous issues of this publication may be viewed and downloaded from the ADOT Web Site:
www.azdot.gov/crashfacts



Douglas A. Ducey
Governor

Arizona Department of Transportation

John S. Halikowski
Director

State Transportation Board

Jesse Thompson – District 5
Chairman

Gary Knight – District 6
Vice Chairman

Members

Jackie Meck – District 1
Jenn Daniels – District 1
Ted Maxwell – District 2
Richard Searle – District 3
Steve Stratton – District 4

OVERVIEW

Section 1: – Highlights and Historical Trends 1

Section 2: – Geographic Location..... 9

Section 3: – Crash Descriptions 17

Section 4: – Safety Devices 23

Section 5: – Motor Vehicle and Driver Descriptions 26

Section 6: – Alcohol Related Crashes..... 33

Section 7: – Pedestrian and Pedalcyclist Crashes 42

Section 8: – Motorcycle (MC) Crashes 48

Acknowledgements 58

2021 Arizona Crash Facts Summary

Table of Contents

Section 1: Highlights and Historical Trends	1
Arizona Crash Facts Summary and Comparison.....	2
Arizona at a Glance – 2021.....	2
Licensed Drivers, Motor Vehicle Registration and Crash History in Arizona.....	3
Historical Trends – VMT and Rates.....	3
Statewide Economic Loss Due to Motor Vehicle Crashes.....	4
State Adjusted Crash Costs.....	4
Traffic Crashes in Arizona by Year.....	5
Victims of Motor Vehicle Crashes.....	6
Suspected Serious Injuries by Person Type 2017-2021.....	6
Young Drivers (age 15-24) killed in crashes 2017-2021.....	6
State Highway System (SHS) vs Local Road Fatalities.....	7
Arizona Fatality Rate vs. Injury Rate.....	7
Traffic Fatalities by Geographic Region.....	7
Traffic Injuries by Geographic Region.....	7
Holiday Crash Statistics.....	8
Section 2: Geographic Location	9
Crash Severity by First Harmful Event Statewide.....	10
Crashes by County.....	10
Crash Severity by First Harmful Event in Urban Areas.....	11
Crash Severity by First Harmful Event in Rural Areas.....	11
Analysis by Jurisdiction.....	12
Total Fatalities by County for 2020 and 2021.....	15
Urban and Rural Crashes by Day of Week.....	16
Urban and Rural Fatal Crashes by Day of Week.....	16
All Urban and Rural Crashes vs. Urban and Rural Fatal Crashes by Month.....	16
Section 3: Crash Descriptions	17
Manner of Collision in Multi-Vehicle Crashes.....	18
Lighting Conditions.....	18
Weather Conditions.....	18
Road Surface Conditions.....	19
Roadway Grade.....	19
Roadway Alignment.....	19
All Crashes vs. Fatal Crashes by Time of Day - Weekdays.....	20
All Crashes vs. Fatal Crashes by Time of Day - Weekends.....	20
Crashes by Day of Week.....	21
Fatal Crashes by Day of Week.....	21
All Crashes vs. Fatal Crashes by Month.....	21
Crashes by Hour and Day of Week.....	22
Section 4: Safety Devices	23
Child Safety Device Usage (less than five years old).....	24
Driver Safety Device Usage.....	24
Passenger Safety Device Usage.....	24
Driver Safety Device Usage by Gender.....	25
Driver Safety Device Usage by Age.....	25

2021 Arizona Crash Facts Summary

Section 5: Motor Vehicle and Driver Descriptions.....	26
Arizona Motor Vehicle Registrations.....	27
Motor Vehicle Crash Involvement by Vehicle Type.....	27
Hit and Run Drivers Involved in Crashes.....	28
Gender of Drivers Involved in Crashes.....	28
License Status of Drivers Involved in Crashes.....	28
Passengers Killed and Injured by Age and Gender.....	28
Drivers and Passengers Killed and Injured by Vehicle Type.....	29
Drivers Killed and Injured by Age and Gender.....	29
Licensed Drivers in Arizona by Age.....	30
Driver Involvement by Age.....	30
Driver Violations.....	31
Driver Physical Condition.....	31
Distracted Driving Behavior.....	32
Secondary Crashes.....	32
Road Rage Crashes.....	32
Section 6: Alcohol Related Crashes.....	33
Economic Loss Due to Alcohol Related Crashes in Arizona for 2021.....	34
Alcohol Related Crash History.....	34
Manner of Collision in Alcohol Related Crashes.....	34
Alcohol Related Crashes by First Harmful Event.....	35
Alcohol Related Crashes by Vehicle Type.....	35
Lighting Conditions in Alcohol Related Crashes.....	36
Road Surface Conditions in Alcohol Related Crashes.....	36
Gender of Drivers Involved in Alcohol Related Crashes.....	36
Driver Involvement by Age in Alcohol Related Crashes.....	37
When Alcohol Related Crashes Occurred in 2021.....	37
Safety Device Usage for Drinking Drivers.....	37
Persons Killed and Injured in Alcohol Related Crashes.....	38
Alcohol Related Crashes by County.....	38
All Alcohol Related Crashes vs. Fatal Alcohol Related Crashes by Day of Week.....	39
All Alcohol Related Crashes vs. Fatal Alcohol Related Crashes by Month.....	39
All Alcohol Related Crashes vs. Fatal Alcohol Related Crashes - Weekdays.....	40
All Alcohol Related Crashes vs. Fatal Alcohol Related Crashes - Weekends.....	40
Alcohol Related Crashes by Hour and Day of Week.....	41
Section 7: Pedestrian and Pedalcyclist Crashes.....	42
Pedestrians Killed and Injured By Age and Gender.....	43
Pedestrian Crashes by Geographic Location.....	43
Pedestrian Crash History.....	43
Pedestrians Killed by Age and Action.....	44
Pedestrians Injured by Age and Action.....	44
Pedestrian Physical Condition in Motor Vehicle Crashes.....	44
Lighting Conditions in Pedestrian Crashes.....	45
Weather Conditions in Pedestrian Crashes.....	45
Pedalcyclists Killed and Injured by Age and Gender.....	45
Pedalcycle Crashes by Geographic Location.....	46
Pedalcycle Crash History.....	46
Lighting Conditions in Pedalcyclist Crashes.....	46
Weather Conditions in Pedalcyclist Crashes.....	46
Pedestrian Crashes by County.....	47
Pedalcyclist Crashes by County.....	47

2021 Arizona Crash Facts Summary

Section 8: Motorcycle (MC) Crashes	48
MC Fatalities by Year.....	49
MC Registrations in Arizona.....	49
Fatality Rate per Registered MC.....	49
Percent of MC Crashes to All Crashes.....	49
MC Crashes by First Harmful Event.....	50
Lighting Conditions in MC Crashes.....	50
Road Surface Conditions in MC Crashes.....	50
MC Crashes by Geographic Location.....	51
Operator Involvement by Age in MC Crashes.....	51
MC Operator Physical Condition.....	51
Helmet Use by Gender.....	52
MC Operator’s Helmet Use.....	52
MC Passenger’s Helmet Use.....	52
MC Operators and Passengers Killed and Injured.....	53
MC Operator Violations.....	53
All MC Crashes vs. Fatal MC Crashes by Time of Day - Weekdays.....	54
All MC Crashes vs. Fatal MC Crashes by Time of Day - Weekends.....	54
All MC Crashes vs. Fatal MC Crashes by Day of Week.....	55
Alcohol Related MC Crashes vs. Fatal Alcohol Related MC Crashes by Day of Week.....	55
MC Crashes by Hour and Day of Week.....	56
MC Crashes by County.....	57
Manner of Collision in MC Crashes.....	57
Acknowledgements	58

2021 Arizona Crash Facts Summary

BREAKDOWN OF ALL CRASHES IN ARIZONA

TOTAL	121,345
FATAL	1,063
INJURY	35,203
PROPERTY DAMAGE ONLY	85,079
URBAN	104,757
RURAL	16,588
ALCOHOL RELATED	5,620
PEDESTRIAN	1,714
PEDALCYCLE	1,027
MOTORCYCLE	2,594
SINGLE VEHICLE	20,827
MULTI-VEHICLE	100,518

BREAKDOWN OF FATAL CRASHES IN ARIZONA

TOTAL	1,063
ALCOHOL RELATED	215
URBAN	709
RURAL	354
SINGLE VEHICLE	311
MULTI-VEHICLE	752
ALCOHOL RELATED SINGLE VEHICLE	72
ALCOHOL RELATED MULTI-VEHICLE	143

BREAKDOWN OF PERSONS KILLED AND INJURED

TYPE	KILLED	INJURED
IN ALL CRASHES	1,180	51,633
IN ALCOHOL RELATED CRASHES	243	3,609
IN URBAN CRASHES	756	43,770
IN RURAL CRASHES	424	7,863
IN SPEED RELATED CRASHES*	359	19,554
IN LANE DEPARTURE CRASHES	753	16,647
IN CRASHES ON THE STATE HIGHWAY SYSTEM	472	16,557
IN CRASHES ON LOCAL ROADS	708	35,076
USING SAFETY DEVICE	296	41,837
NOT USING SAFETY DEVICE	366	3,215
DRIVERS AGE 24 OR YOUNGER	114	8,459
DRINKING DRIVERS AGE 24 OR YOUNGER	20	373

BREAKDOWN OF CRASHES BY TIME

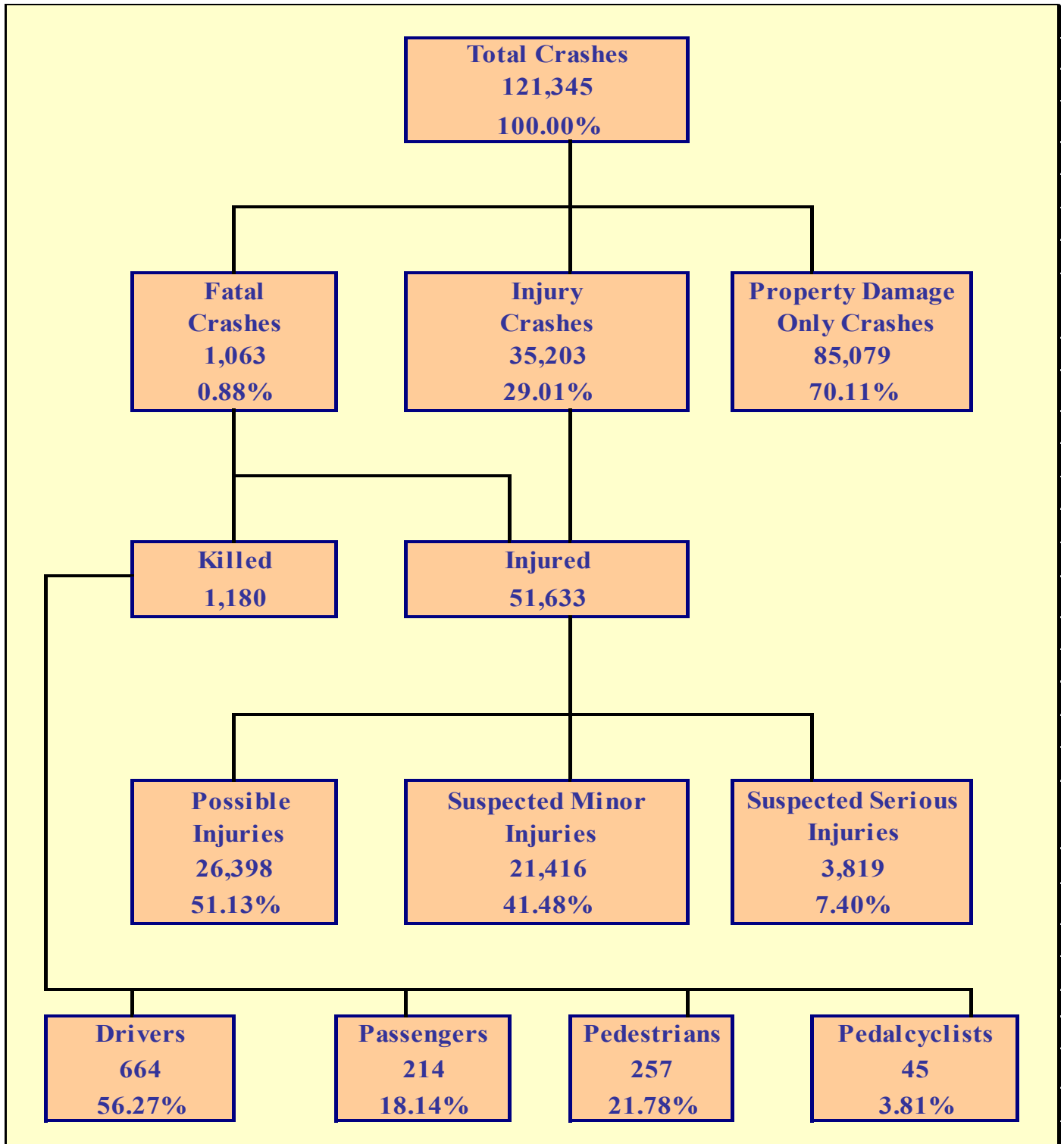
PEAK MONTH FOR ALL CRASHES	OCTOBER
PEAK DAY FOR ALL CRASHES	FRIDAY
PEAK HOUR FOR ALL CRASHES	3 PM - 4 PM
PEAK MONTH FOR FATAL CRASHES	JUNE
PEAK DAY FOR FATAL CRASHES	FRIDAY
PEAK HOUR FOR FATAL CRASHES	6 PM - 7 PM
PEAK DATE FOR ALL CRASHES IN 2021	WEDNESDAY DECEMBER 15TH (514 CRASHES)
PEAK DATE FOR FATAL CRASHES IN 2021	FRIDAY JUNE 4TH AND FRIDAY OCTOBER 29TH (8 CRASHES)
PEAK HOUR FOR MOTORCYCLE CRASHES	3 PM - 4 PM
PEAK HOUR FOR ALCOHOL RELATED CRASHES	2 AM - 3 AM
PEAK HOUR FOR PEDESTRIAN CRASHES	7 PM - 8 PM
PEAK HOUR FOR PEDALCYCLE CRASHES	5 PM - 6 PM

*Note: These numbers represent the total number of fatalities and injuries in crashes where the violation "speed too fast for conditions" or "exceeded lawful speed" was marked on the crash report.

2021 Arizona Crash Facts Summary

Fatalities in Arizona since 1925

Year	Total Fatalities	Year	Total Fatalities
1925	76	1974	751
1926	120	1975	670
1927	147	1976	739
1928	130	1977	933
1929	157	1978	1,027
1930	190	1979	1,029
1931	159	1980	947
1932	166	1981	916
1933	154	1982	724
1934	205	1983	675
1935	217	1984	869
1936	244	1985	893
1937	258	1986	1,007
1938	200	1987	939
1939	215	1988	944
1940	228	1989	879
1941	272	1990	869
1942	230	1991	816
1943	168	1992	811
1944	180	1993	799
1945	283	1994	904
1946	236	1995	1,035
1947	256	1996	997
1948	301	1997	950
1949	281	1998	981
1950	325	1999	1,028
1951	415	2000	1,037
1952	396	2001	1,057
1953	397	2002	1,132
1954	402	2003	1,125
1955	358	2004	1,159
1956	486	2005	1,193
1957	461	2006	1,301
1958	509	2007	1,071
1959	517	2008	938
1960	513	2009	806
1961	510	2010	759
1962	510	2011	827
1963	513	2012	821
1964	588	2013	849
1965	550	2014	774
1966	643	2015	897
1967	574	2016	952
1968	695	2017	998
1969	750	2018	1,011
1970	762	2019	980
1971	755	2020	1,054
1972	812	2021	1,180
1973	975		



Section 1: – Highlights and Historical Trends

Table 1 – 1

Arizona Crash Facts Summary and Comparison

Category	2020	2021	Percent Change
Total Crashes	99,100	121,345	22.45%
Total Fatalities	1,054	1,180	11.95%
Total Injuries	41,540	51,633	24.30%
Alcohol Related Fatalities	228	243	6.58%
Alcohol Related Injuries	2,899	3,609	24.49%
Urban Fatalities	624	756	21.15%
Urban Injuries	35,299	43,770	24.00%
Rural Fatalities	430	424	-1.40%
Rural Injuries	6,241	7,863	25.99%
MC Operator and Passenger Fatalities	161	160	-0.62%
MC Operator and Passenger Injuries	1,926	2,206	14.54%
Pedestrians Fatalities	235	257	9.36%
Pedestrians Injuries	1,358	1,535	13.03%
Pedalcyclist Fatalities	32	45	40.63%
Pedalcyclist Injuries	815	1,005	23.31%
Millions of vehicle miles traveled (VMT)	65,574	73,760	12.48%
Fatalities per 100 million VMT	1.61	1.60	-0.47%
Injuries per 100 million VMT	63.35	70.00	10.50%

Arizona at a Glance – 2021

- Approximately **3.23** persons were killed each day.
- One person was killed every **7** hours and **25** minutes.
- There were **141** persons injured every day.
- One person was injured every **10** minutes and **11** seconds.
- Alcohol Related crashes accounted for **4.63%** of all crashes and **20.23%** of all fatal crashes.
- Of all alcohol related crashes, **84.02%** occurred in Urban areas and **15.98%** occurred in Rural areas, while **69.77%** of all alcohol related fatal crashes occurred in Urban areas and **30.23%** occurred in Rural areas.
- Single vehicle crashes accounted for **17.16%** of all crashes and **29.26%** of all fatal crashes.
- Of all Pedestrian crashes, **15.05%** were fatal while **4.38%** of Pedalcycle crashes were fatal.
- Crashes which occurred during daylight hours (6:00 a.m. to 6:00 p.m.) accounted for **69.8%** of all crashes.
- Motor vehicle crashes resulted in **\$20.156** billion in economic losses to Arizona.
- Children age 14 and younger accounted for **32** fatalities and **2,861** injuries in motor vehicle crashes.

Section 1: – Highlights and Historical Trends

Table 1 – 2
Licensed Drivers, Motor Vehicle Registration
and Crash History in Arizona

Calendar Year	Total Crashes	Fatal Crashes	Injury Crashes	Property Damage Only Crashes	Total Persons Killed	Total Persons Injured	Total Licensed Drivers	Total Registered Vehicles
2007	141,193	952	43,560	96,681	1,071	66,062	4,212,393	4,848,162
2008	120,557	843	37,515	82,199	938	56,539	4,360,711	4,842,188
2009	107,149	709	33,506	72,934	806	50,809	4,434,719	4,787,350
2010	106,900	695	33,419	72,786	759	50,463	4,537,653	4,805,904
2011	103,958	756	33,223	69,979	827	49,856	4,634,405	4,855,014
2012	103,940	738	33,595	69,607	821	50,092	4,736,517	4,969,620
2013	107,576	782	34,137	72,657	849	50,440	4,826,903	5,130,780
2014	109,883	709	34,589	74,585	774	51,114	4,922,676	5,300,980
2015	117,121	811	36,371	79,939	897	53,922	5,025,811	5,487,058
2016	127,345	856	38,776	87,713	952	57,003	5,135,262	5,677,208
2017	127,858	917	38,103	88,838	998	55,938	5,221,403	5,843,368
2018	127,749	918	36,711	90,120	1,011	53,681	5,308,307	6,009,850
2019	131,098	909	37,345	92,844	980	54,409	5,375,341	6,167,481
2020	99,100	967	28,724	69,409	1,054	41,540	5,772,928	6,356,220
2021	121,345	1,063	35,203	85,079	1,180	51,633	5,808,545	6,468,399

Table 1 – 3
Historical Trends – VMT and Rates

Calendar Year	Arizona Fatality Rate	Arizona Injury Rate	Arizona Traffic Fatalities	Estimated Motor Vehicle Miles Traveled	Arizona Fatal Crash Rate
2017	1.53	85.97	998	65,069	1.41
2018	1.53	81.16	1,011	66,145	1.39
2019	1.39	77.42	980	70,281	1.29
2020	1.61	63.35	1,054	65,574	1.47
2021	1.60	70.00	1,180	73,760	1.44

Vehicle miles traveled are shown in million miles and rates per 100 million miles

Section 1: – Highlights and Historical Trends

Statewide Economic Loss Due to Motor Vehicle Crashes

Fatalities	\$11,228,137,780
Suspected Serious Injuries	\$2,102,355,681
Suspected Minor Injuries	\$3,193,810,912
Possible Injuries	\$2,722,821,710
Property Damage Only	\$908,643,720
TOTAL	\$20,155,769,803

Table 1 – 4

Estimated Economic Loss by County

County	Cost of Traffic Crashes			
	Fatalities	Injuries	PDO	Total
Apache	\$ 228,368,904	\$ 41,446,886	\$ 3,107,880	\$ 272,923,670
Cochise	\$ 266,430,388	\$ 87,025,699	\$ 9,419,760	\$ 362,875,847
Coconino	\$ 437,707,066	\$ 220,206,003	\$ 29,060,280	\$ 686,973,349
Gila	\$ 266,430,388	\$ 93,981,108	\$ 7,283,760	\$ 367,695,256
Graham	\$ 180,792,049	\$ 28,004,849	\$ 2,467,080	\$ 211,263,978
Greenlee	\$ 9,515,371	\$ 4,954,659	\$ 566,040	\$ 15,036,070
La Paz	\$ 171,276,678	\$ 46,438,925	\$ 3,577,800	\$ 221,293,403
Maricopa	\$ 5,652,130,374	\$ 5,250,506,630	\$ 660,643,440	\$ 11,563,280,444
Mohave	\$ 666,075,970	\$ 323,089,055	\$ 26,518,440	\$ 1,015,683,465
Navajo	\$ 390,130,211	\$ 113,337,604	\$ 9,889,680	\$ 513,357,495
Pima	\$ 1,531,974,731	\$ 860,079,361	\$ 74,802,720	\$ 2,466,856,812
Pinal	\$ 542,376,147	\$ 384,102,648	\$ 33,172,080	\$ 959,650,875
Santa Cruz	\$ 76,122,968	\$ 22,683,135	\$ 3,043,800	\$ 101,849,903
Yavapai	\$ 542,376,147	\$ 322,775,239	\$ 28,173,840	\$ 893,325,226
Yuma	\$ 266,430,388	\$ 220,356,502	\$ 16,917,120	\$ 503,704,010
TOTALS	\$ 11,228,137,780	\$ 8,018,988,303	\$ 908,643,720	\$ 20,155,769,803

Table 1 – 5

State Adjusted Crash Costs

1.	Fatality	\$9,515,371
2.	Suspected Serious Injury	\$550,499
3.	Suspected Minor Injury	\$149,132
4.	Possible Injury	\$103,145
5.	Property Damage Only	\$10,680

Source: www.safety.fhwa.dot.gov/hsip/docs/fhwasa17071.pdf

Section 1: – Highlights and Historical Trends

Traffic Crashes in Arizona by Year

Chart 1 – 1
Total Crashes

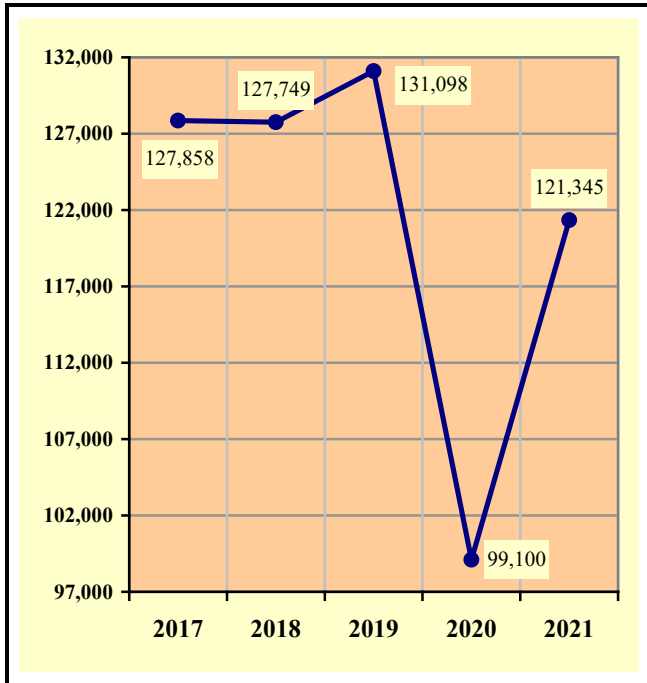


Chart 1 – 2
Fatal Crashes

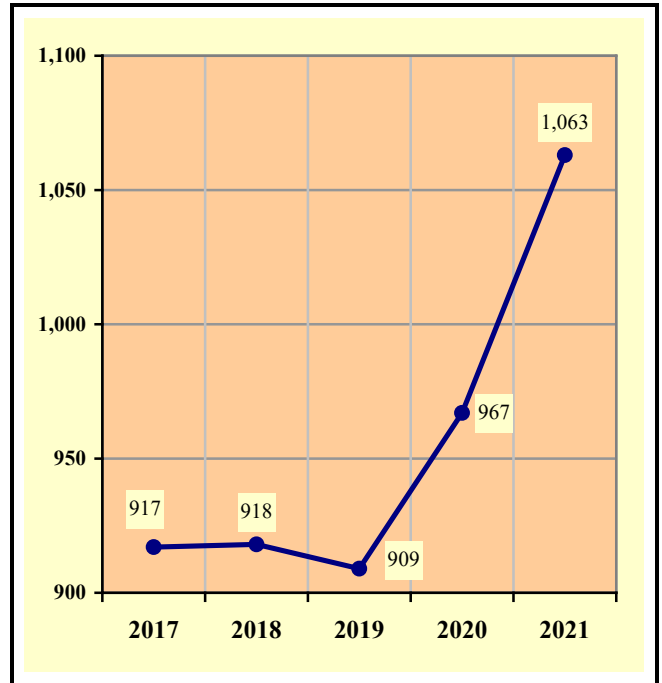


Chart 1 – 3
Injury Crashes

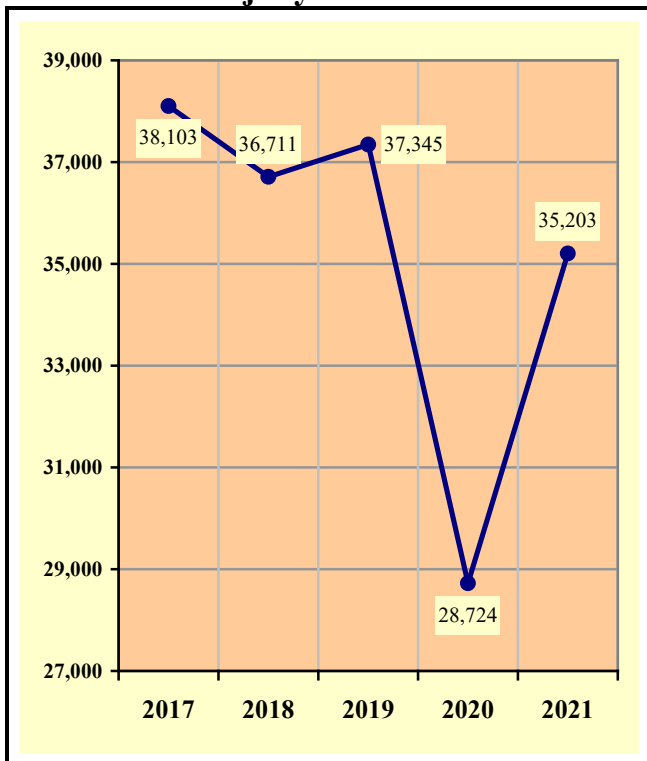
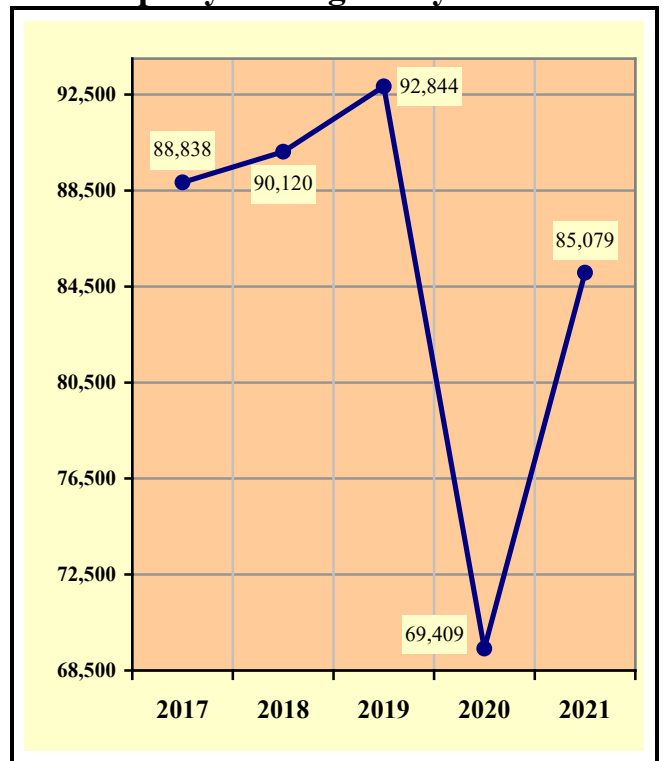


Chart 1 – 4
Property Damage Only Crashes



Section 1: – Highlights and Historical Trends

Table 1 – 6

Victims of Motor Vehicle Crashes

Age of Victim	Persons Killed				Persons Injured			
	Total	Male	Female	Gender Unknown	Total	Male	Female	Gender Unknown
0-4	7	4	3	0	698	368	330	0
5-9	12	6	6	0	943	493	450	0
10-14	13	7	6	0	1,220	595	625	0
15-19	73	53	20	0	5,335	2,614	2,721	0
20-24	119	74	45	0	6,877	3,440	3,437	0
25-34	212	152	60	0	10,801	5,678	5,123	0
35-44	184	124	60	0	7,601	3,896	3,705	0
45-54	167	120	47	0	6,465	3,298	3,167	0
55-64	170	125	45	0	5,561	2,888	2,673	0
65-74	115	84	31	0	3,553	1,763	1,790	0
75 & Older	74	42	32	0	2,040	1,014	1,026	0
Unknown	34	15	7	12	539	252	189	98
TOTAL	1,180	806	362	12	51,633	26,299	25,236	98

Table 1 – 7

Suspected Serious Injuries by Person Type 2017-2021

Year	Drivers	Passengers	Pedestrians	Pedalcyclists	Total
2017	2,646	985	391	185	4,207
2018	2,434	796	387	173	3,790
2019	2,320	790	366	151	3,627
2020	1,994	680	311	123	3,108
2021	2,397	892	395	135	3,819
TOTAL	11,791	4,143	1,850	767	18,551

Table 1 – 8

Young drivers (age 15-24) killed in crashes 2017-2021

Year	Age of Driver										Total
	15	16	17	18	19	20	21	22	23	24	
2017	1	0	2	8	9	10	14	18	10	10	82
2018	1	2	4	13	6	12	10	13	12	14	87
2019	0	6	4	9	9	11	13	12	9	9	82
2020	2	6	9	6	12	14	12	12	14	10	97
2021	1	3	6	14	8	13	18	13	25	11	112
TOTAL	5	17	25	50	44	60	67	68	70	54	460

Section 1: – Highlights and Historical Trends

Chart 1 – 5

State Highway System (SHS) vs Local Road Fatalities

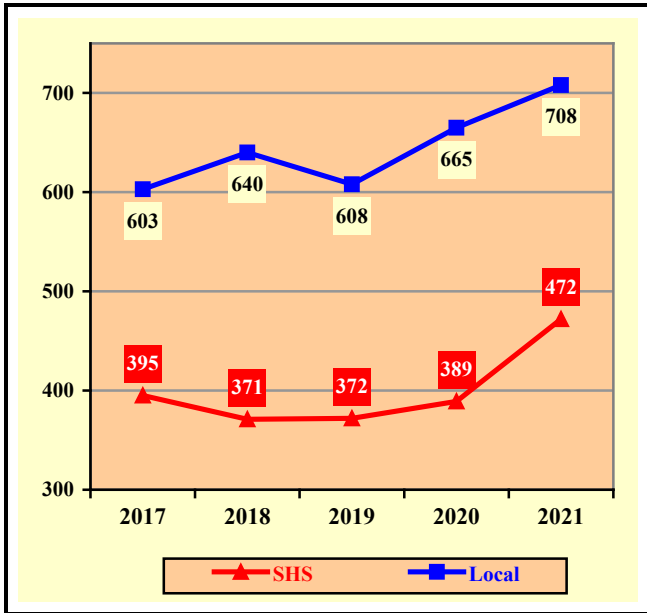


Chart 1 – 6

Arizona Fatality Rate vs. Injury Rate



Chart 1 – 7

Traffic Fatalities by Geographic Region

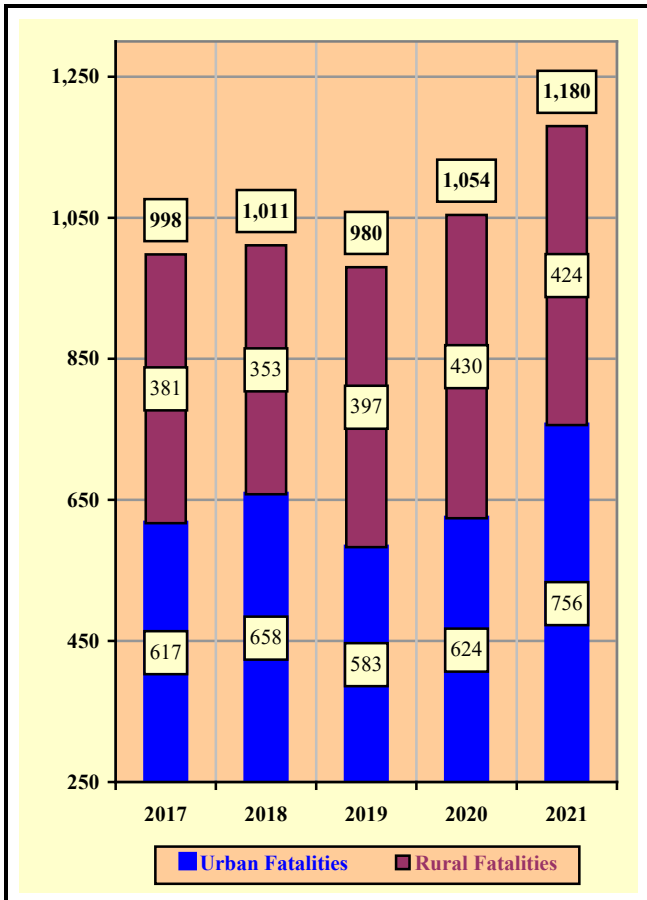
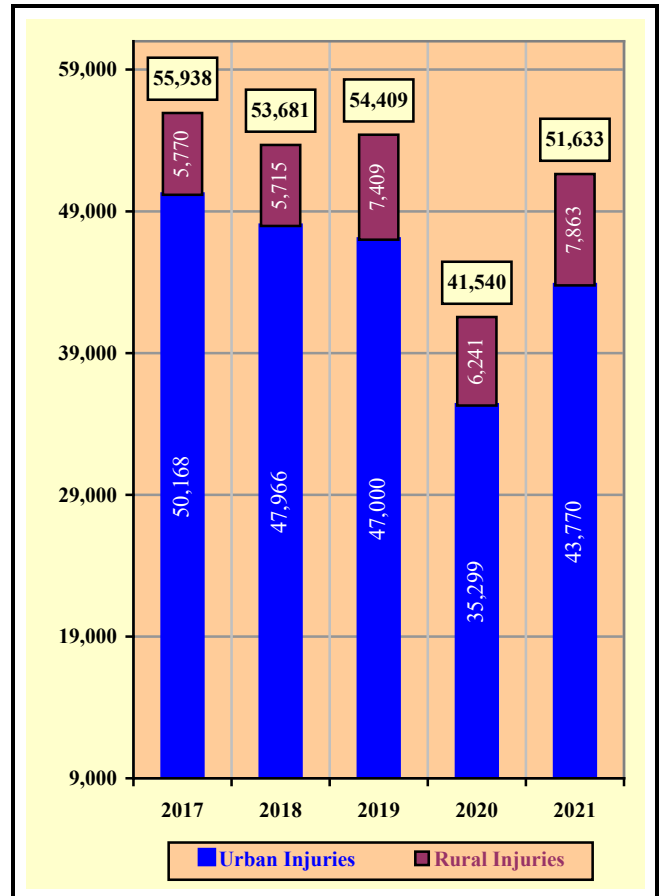


Chart 1 – 8

Traffic Injuries by Geographic Region



Section 1: – Highlights and Historical Trends

Table 1 – 9

Holiday Crash Statistics

Holidays such as Memorial Day, Labor Day, and Thanksgiving are regarded as three or four day weekend holidays for statistical purposes. Holidays such as Christmas, New Year’s Day, and the Fourth of July are celebrated on specific dates; which make the holiday period range from two to five days in length.

Holiday fatality statistics are based on fatal crashes occurring from 6:00 p.m. on the last working day prior to the holiday through 5:59 a.m. the day following the holiday period. Example: Thanksgiving fatalities are counted from Wednesday evening at 6:00 p.m. through 5:59 a.m. of the following Monday.

2021 Holidays	Beginning at 6:00 p.m.	Ending at 5:59 a.m.	Days Counted for Holiday Period	Fatal Crashes	Persons Killed	Alcohol Related Fatal Crashes	Alcohol Related Fatalities
New Year’s Day	Thursday	Monday	4	10	10	3	3
	12/31/2020	1/4/2021					
Memorial Day	Friday	Tuesday	4	10	14	1	2
	5/28/2021	6/1/2021					
July 4th	Friday	Tuesday	4	8	10	1	1
	7/2/2021	7/6/2021					
Labor Day	Friday	Tuesday	4	14	14	1	1
	9/3/2021	9/7/2021					
Thanksgiving Day	Wednesday	Monday	5	15	18	2	5
	11/24/2021	11/29/2021					
Christmas Day	Thursday	Monday	4	12	12	2	2
	12/23/2021	12/27/2021					

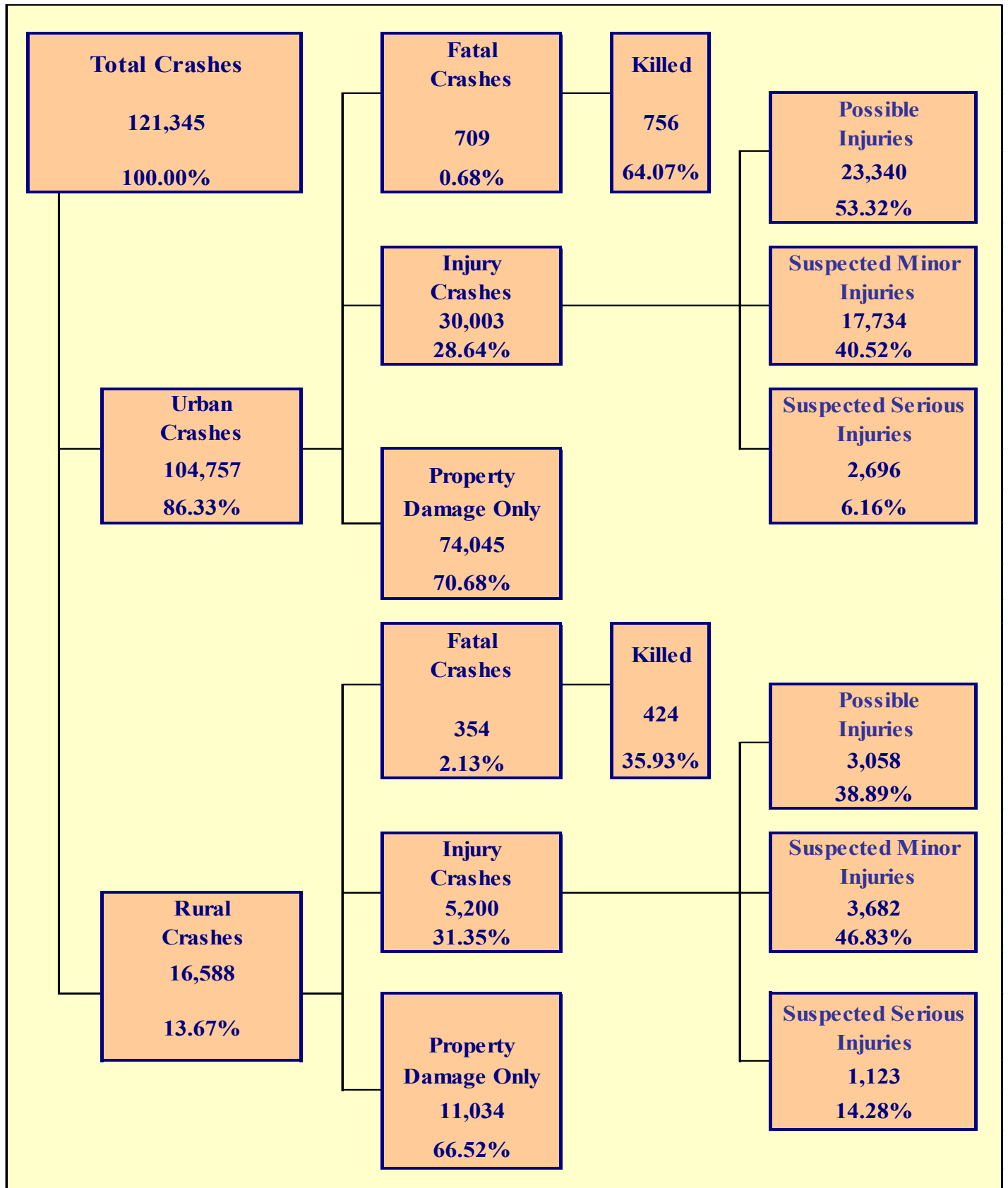
Fatal Crashes by Year	New Year’s Day	Memorial Day	July 4th	Labor Day	Thanksgiving	Christmas Day	Total
2017	12	5	4	9	16	10	56
2018	10	7	5	8	8	10	48
2019	8	13	13	12	11	2	59
2020	2	11	9	10	12	10	54
2021	10	10	8	14	15	12	69

Persons Killed	New Year’s Day	Memorial Day	July 4th	Labor Day	Thanksgiving	Christmas Day	Total
2017	13	7	4	9	17	10	60
2018	10	8	5	9	8	11	51
2019	9	13	14	12	11	2	61
2020	2	11	9	10	12	14	58
2021	10	14	10	14	18	12	78

Days Counted for Holiday Period	New Year’s Day	Memorial Day	July 4th	Labor Day	Thanksgiving	Christmas Day	Total
2017	4	4	2	4	5	4	23
2018	4	4	2	4	5	5	24
2019	5	4	5	4	5	2	25
2020	2	4	4	4	5	4	23
2021	4	4	4	4	5	4	25

Section 2

Geographic Location



Section 2: – Geographic Location

Fatal Crashes in Arizona (1,063) accounted for 0.88% of all crashes, Injury Crashes (35,203) accounted for 29.01%, and Property Damage Only (PDO) Crashes (85,079) accounted for 70.11%.

**Table 2 – 1
Crash Severity by First Harmful Event Statewide**

First Harmful Event Type	Number of Crashes				Number of Persons	
	Total	Fatal	Injury	PDO	Killed	Injured
Collision with Motor Vehicle in Transport	90,998	422	25,890	64,686	510	40,371
Overtuning	2,455	101	1,509	845	111	2,032
Collision with Pedestrian	1,629	239	1,390	0	240	1,476
Collision with Pedalcyclist	1,012	45	967	0	45	1,004
Collision with Animal	1,825	3	233	1,589	3	300
Collision with Fixed Object	14,707	214	4,116	10,377	228	5,050
Collision with Non-fixed Object*	7,074	14	821	6,239	17	1,002
Vehicle Fire or Explosion	414	1	14	399	1	15
Other Non-collision**	240	4	31	205	4	36
Unknown	991	20	232	739	21	347
TOTAL	121,345	1,063	35,203	85,079	1,180	51,633
*Includes Collision with Parked Vehicles, Trains, Railway Vehicles, and Work Zone Equipment						
**Includes Vehicle Immersion, Jackknife, and Cargo Loss or Shift						

**Table 2 – 2
Crashes by County**

County	Number of Crashes				Number of Persons	
	Total	Fatal	Injury	PDO	Killed	Injured
Apache	457	22	144	291	24	211
Cochise	1,230	22	326	882	28	491
Coconino	3,658	41	896	2,721	46	1,302
Gila	1,017	24	311	682	28	486
Graham	368	15	122	231	19	178
Greenlee	72	1	18	53	1	21
La Paz	495	16	144	335	18	220
Maricopa	86,687	546	24,283	61,858	594	35,488
Mohave	3,667	54	1,130	2,483	70	1,675
Navajo	1,327	35	366	926	41	602
Pima	10,872	155	3,713	7,004	161	5,432
Pinal	4,645	49	1,490	3,106	57	2,223
Santa Cruz	369	8	76	285	8	120
Yavapai	3,900	49	1,213	2,638	57	1,727
Yuma	2,581	26	971	1,584	28	1,457
TOTAL	121,345	1,063	35,203	85,079	1,180	51,633

Section 2: – Geographic Location

Table 2 – 3
Crash Severity by First Harmful Event in Urban Areas

First Harmful Event Type	Number of Crashes				Number of Persons	
	Total	Fatal	Injury	PDO	Killed	Injured
Collision with Motor Vehicle in Transport	83,110	293	23,403	59,414	327	36,069
Overturning	827	20	545	262	21	680
Collision with Pedestrian	1,518	203	1,315	0	204	1,391
Collision with Pedalcyclist	931	40	891	0	40	925
Collision with Animal	369	0	38	331	0	46
Collision with Fixed Object	10,844	140	2,905	7,799	150	3,498
Collision with Non-fixed Object*	5,858	9	650	5,199	10	789
Vehicle Fire or Explosion	165	0	7	158	0	7
Other Non-collision**	163	3	17	143	3	20
Unknown	972	1	232	739	1	345
TOTAL	104,757	709	30,003	74,045	756	43,770
*Includes Collision with Parked Vehicles, Trains, Railway Vehicles, and Work Zone Equipment						
**Includes Vehicle Immersion, Jackknife, and Cargo Loss or Shift						

Table 2 – 4
Crash Severity by First Harmful Event in Rural Areas

First Harmful Event Type	Number of Crashes				Number of Persons	
	Total	Fatal	Injury	PDO	Killed	Injured
Collision with Motor Vehicle in Transport	7,888	129	2,487	5,272	183	4,302
Overturning	1,628	81	964	583	90	1,352
Collision with Pedestrian	111	36	75	0	36	85
Collision with Pedalcyclist	81	5	76	0	5	79
Collision with Animal	1,456	3	195	1,258	3	254
Collision with Fixed Object	3,863	74	1,211	2,578	78	1,552
Collision with Non-fixed Object*	1,216	5	171	1,040	7	213
Vehicle Fire or Explosion	249	1	7	241	1	8
Other Non-collision**	77	1	14	62	1	16
Unknown	19	19	0	0	20	2
TOTAL	16,588	354	5,200	11,034	424	7,863
*Includes Collision with Parked Vehicles, Trains, Railway Vehicles, and Work Zone Equipment						
**Includes Vehicle Immersion, Jackknife, and Cargo Loss or Shift						

While Urban Crashes in Arizona (104,757) accounted for 86.33% of all crashes, they accounted for 66.70% of all Fatal Crashes (709) occurring in 2021.

While Rural Crashes in Arizona (16,588) accounted for 13.67% of all crashes, they accounted for 33.30% of all Fatal Crashes (354) occurring in 2021.

Section 2: – Geographic Location

Table 2 – 5

Analysis by Jurisdiction

COUNTIES Cities	Number of Crashes				No. of Persons		Alcohol Related		
	Total	Fatal	Injury	PDO	Killed	Injured	Crashes	Killed	Injured
Apache County	419	22	131	266	24	193	32	6	25
Eagar	11	0	3	8	0	3	0	0	0
Springerville	8	0	3	5	0	4	1	0	1
St. Johns	19	0	7	12	0	11	1	0	1
TOTAL	457	22	144	291	24	211	34	6	27

Cochise County	562	16	148	398	20	228	21	6	20
Benson	80	1	19	60	1	33	2	0	1
Bisbee	5	2	2	1	3	6	0	0	0
Douglas	113	0	33	80	0	47	9	0	10
Huachuca City	1	0	0	1	0	0	0	0	0
Sierra Vista	440	3	114	323	4	161	9	2	2
Tombstone	5	0	2	3	0	2	2	0	1
Willcox	24	0	8	16	0	14	0	0	0
TOTAL	1,230	22	326	882	28	491	43	8	34

Coconino County	1,515	28	414	1,073	31	631	81	2	73
Flagstaff	1,841	10	426	1,405	12	592	98	3	55
Fredonia	0	0	0	0	0	0	0	0	0
Williams	126	2	16	108	2	21	6	1	4
Page	77	0	25	52	0	40	15	0	10
Sedona	99	1	15	83	1	18	9	0	2
TOTAL	3,658	41	896	2,721	46	1,302	209	6	144

Gila County	583	21	180	382	25	279	40	8	32
Globe	141	1	45	95	1	84	12	0	7
Hayden	3	0	1	2	0	1	0	0	0
Miami	31	0	9	22	0	12	0	0	0
Payson	258	2	76	180	2	110	21	0	13
Winkelman	1	0	0	1	0	0	0	0	0
TOTAL	1,017	24	311	682	28	486	73	8	52

Graham County	163	12	59	92	16	88	14	4	14
Pima	7	0	1	6	0	1	0	0	0
Safford	138	2	42	94	2	63	6	0	3
Thatcher	60	1	20	39	1	26	5	0	5
TOTAL	368	15	122	231	19	178	25	4	22

Greenlee County	59	1	15	43	1	18	3	0	0
Clifton	10	0	3	7	0	3	0	0	0
Duncan	3	0	0	3	0	0	0	0	0
TOTAL	72	1	18	53	1	21	3	0	0

Section 2: – Geographic Location

Table 2 – 5
Analysis by Jurisdiction

COUNTIES Cities	Number of Crashes				No. of Persons		Alcohol Related		
	Total	Fatal	Injury	PDO	Killed	Injured	Crashes	Killed	Injured
La Paz County	411	13	129	269	15	201	22	2	19
Parker	27	0	4	23	0	4	0	0	0
Quartzite	57	3	11	43	3	15	1	1	0
TOTAL	495	16	144	335	18	220	23	3	19

Maricopa County	6,931	67	2,265	4,599	84	3,333	295	25	201
Apache Junction	22	0	8	14	0	9	3	0	0
Avondale	1,628	6	463	1,159	6	684	65	1	35
Buckeye	1,118	9	347	762	13	509	48	2	38
Cave Creek	76	0	23	53	0	28	5	0	3
Chandler	3,345	15	942	2,388	16	1,371	161	3	102
El Mirage	468	1	134	333	1	169	15	0	7
Gila Bend	54	0	19	35	0	26	0	0	0
Gilbert	3,135	15	544	2,576	15	712	117	3	60
Glendale	5,510	39	1,327	4,144	43	1,884	186	9	93
Goodyear	1,431	6	420	1,005	7	582	65	1	34
Mesa	6,091	43	1,825	4,223	45	2,648	283	11	184
Paradise Valley	92	1	20	71	1	33	5	0	4
Peoria	2,993	16	973	2,004	16	1,352	149	6	82
Phoenix	40,833	278	10,879	29,676	294	16,062	1,429	49	872
Scottsdale	3,776	14	1,207	2,555	14	1,817	272	1	180
Surprise	1,807	3	507	1,297	4	713	60	2	37
Tempe	5,844	23	2,052	3,769	25	3,086	362	5	236
Tolleson	407	3	87	317	3	134	14	0	10
Wickenburg	146	1	21	124	1	31	2	0	1
Youngtown	46	0	13	33	0	15	2	0	1
Guadalupe	149	0	43	106	0	59	7	0	3
Litchfield Park	33	1	9	23	1	17	0	0	0
Queen Creek	551	2	100	449	2	141	13	0	4
Fountain Hills	164	2	43	119	2	56	7	0	8
Carefree	37	1	12	24	1	17	4	1	4
TOTAL	86,687	546	24,283	61,858	594	35,488	3,569	119	2,199

Mohave County	1,624	44	566	1,014	57	921	106	7	115
Kingman	674	3	174	497	5	244	36	1	17
Lake Havasu City	600	2	190	408	3	234	47	1	30
Bullhead City	745	5	190	550	5	260	45	2	33
Colorado City	24	0	10	14	0	16	2	0	0
TOTAL	3,667	54	1,130	2,483	70	1,675	236	11	195

Crashes in Maricopa County accounted for 71.44% of all crashes and 51.36% of fatal crashes.

Section 2: – Geographic Location

Table 2 – 5

Analysis by Jurisdiction

COUNTIES Cities	Number of Crashes				No. of Persons		Alcohol Related		
	Total	Fatal	Injury	PDO	Killed	Injured	Crashes	Killed	Injured
Navajo County	654	31	197	426	36	334	47	4	25
Holbrook	49	0	12	37	0	18	2	0	0
Show Low	285	2	72	211	2	119	11	1	4
Snowflake	50	0	17	33	0	27	5	0	2
Taylor	46	0	8	38	0	10	3	0	1
Winslow	93	1	21	71	2	26	5	0	5
Pinetop-Lakeside	150	1	39	110	1	68	18	1	11
TOTAL	1,327	35	366	926	41	602	91	6	48
Pima County	3,109	58	986	2,065	61	1,471	188	15	131
South Tucson	23	1	8	14	1	11	2	0	5
Tucson	6,190	88	2,311	3,791	91	3,360	456	34	281
Sahuarita	298	3	83	212	3	124	11	0	3
Oro Valley	345	3	110	232	3	158	12	0	8
Marana	907	2	215	690	2	308	35	0	30
TOTAL	10,872	155	3,713	7,004	161	5,432	704	49	458
Pinal County	2,375	37	733	1,605	44	1,126	104	8	76
Casa Grande	770	1	249	520	1	349	43	0	18
Coolidge	176	0	73	103	0	116	11	0	9
Eloy	148	1	49	98	1	72	6	0	4
Florence	115	0	38	77	0	57	8	0	7
Kearny	12	0	4	8	0	8	2	0	2
Mammoth	2	0	1	1	0	1	0	0	0
Queen Creek	44	0	8	36	0	10	0	0	0
Superior	3	0	0	3	0	0	1	0	0
Apache Junction	586	6	196	384	6	296	33	1	27
Maricopa	414	4	139	271	5	188	25	0	14
TOTAL	4,645	49	1,490	3,106	57	2,223	233	9	157
Santa Cruz County	232	6	47	179	6	65	17	2	4
Nogales	137	2	29	106	2	55	3	1	0
Patagonia	0	0	0	0	0	0	0	0	0
TOTAL	369	8	76	285	8	120	20	3	4
Yavapai County	1,887	35	639	1,213	41	908	104	5	84
Clarkdale	23	1	7	15	1	12	3	0	3
Cottonwood	304	0	81	223	0	102	16	0	6
Jerome	2	0	0	2	0	0	0	0	0
Peoria	3	0	0	3	0	0	0	0	0
Prescott	656	5	181	470	6	247	30	1	18
Prescott Valley	519	4	155	360	5	237	30	2	17
Chino Valley	175	1	51	123	1	75	9	0	8
Camp Verde	188	3	44	141	3	64	13	0	5
Dewey-Humboldt	28	0	14	14	0	23	7	0	11
Sedona	106	0	37	69	0	54	4	0	6
Wickenburg	9	0	4	5	0	5	1	0	1
TOTAL	3,900	49	1,213	2,638	57	1,727	217	8	159

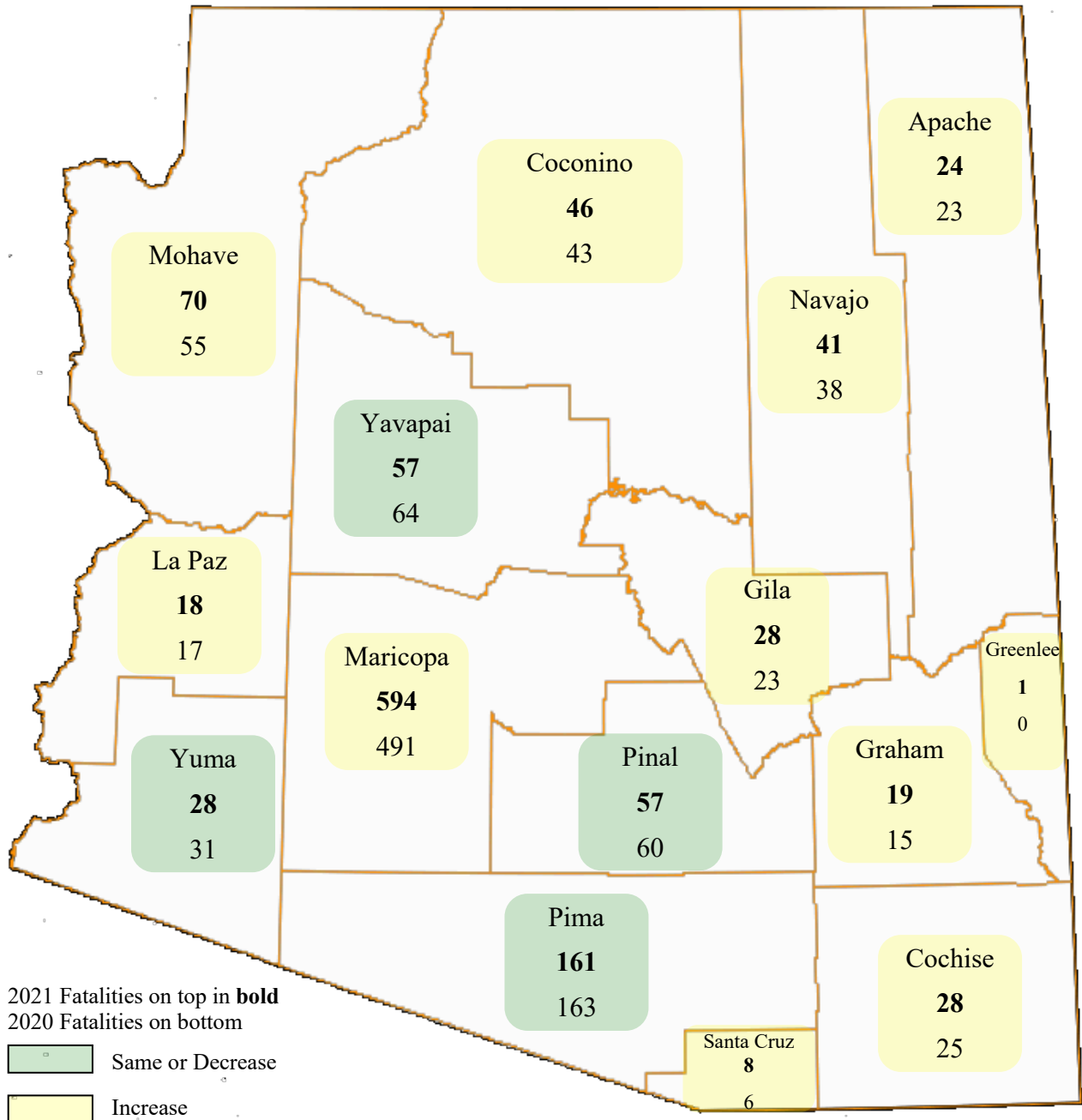
Section 2: – Geographic Location

Table 2 – 5
Analysis by Jurisdiction

COUNTIES Cities	Number of Crashes				No. of Persons		Alcohol Related		
	Total	Fatal	Injury	PDO	Killed	Injured	Crashes	Killed	Injured
Yuma County	688	14	226	448	16	374	35	2	27
Somerton	76	2	26	48	2	38	7	1	3
Yuma	1,608	9	674	925	9	981	87	0	54
Wellton	18	0	3	15	0	3	1	0	1
San Luis	191	1	42	148	1	61	10	0	6
TOTAL	2,581	26	971	1,584	28	1,457	140	3	91

Note: Some individual city data may be incomplete due to lack of timely reporting or changes in crash reporting procedures.

Total Fatalities by County for 2020 and 2021



Section 2: – Geographic Location

Chart 2 – 1

Urban and Rural Crashes by Day of Week

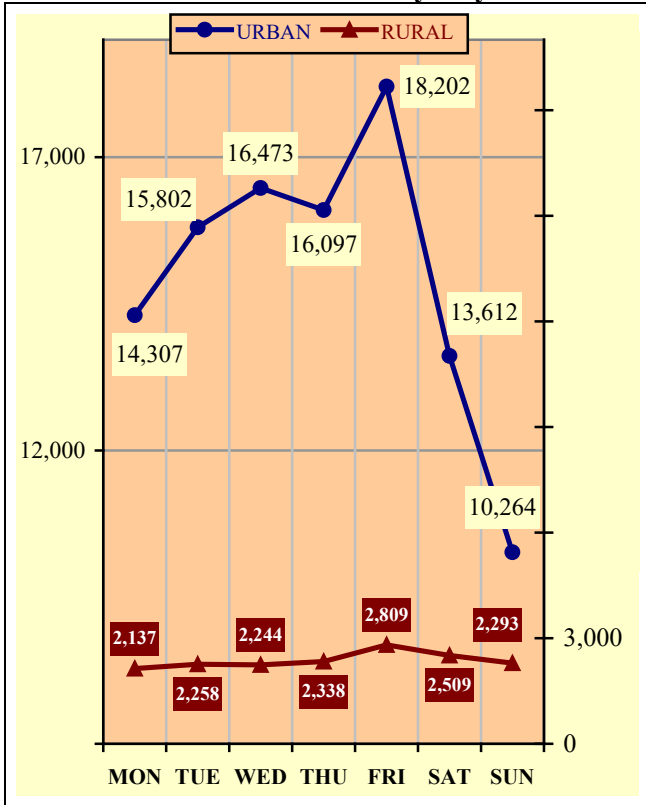


Chart 2 – 2

Urban and Rural Fatal Crashes by Day of Week

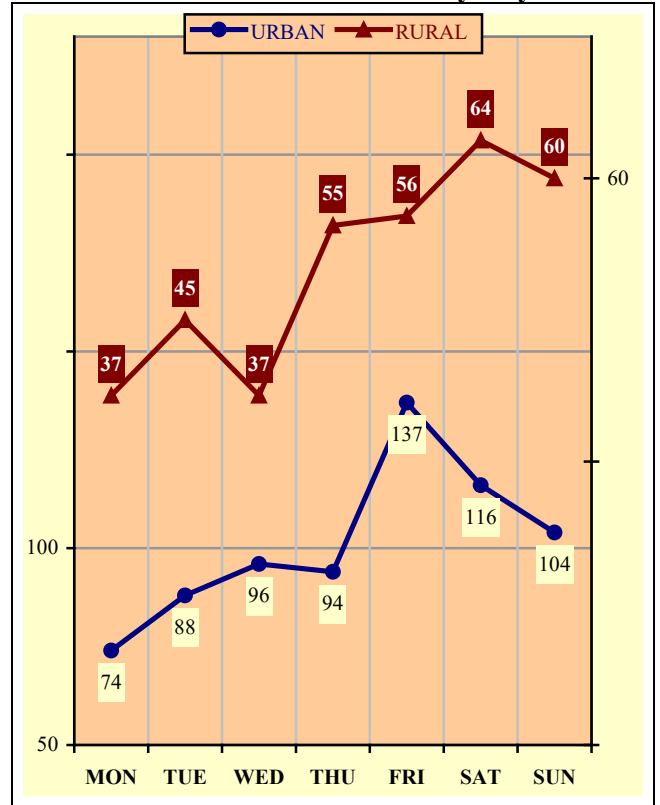
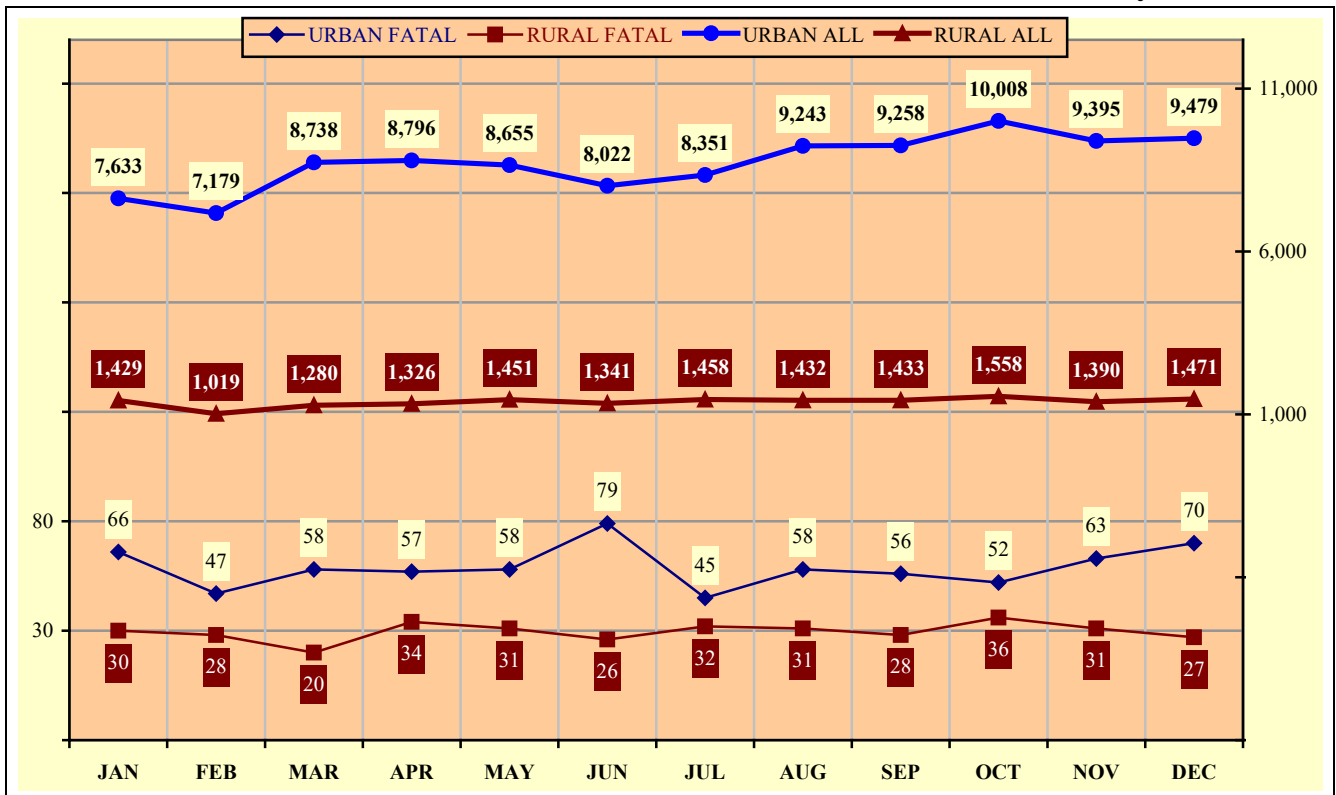


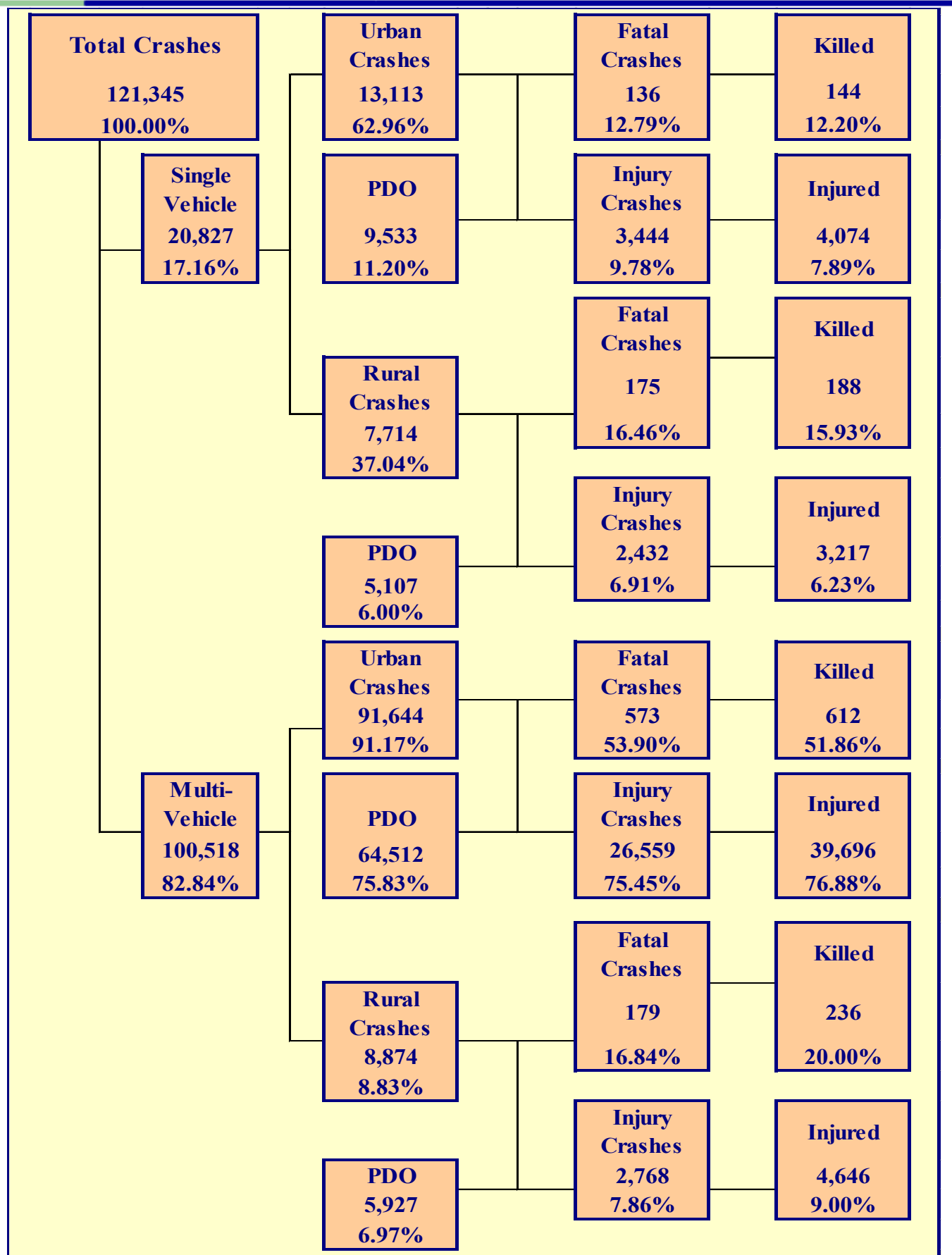
Chart 2 – 3

All Urban and Rural Crashes vs. Urban and Rural Fatal Crashes by Month



Section 3

Crash Descriptions



Section 3: – Crash Descriptions

Table 3 – 1
Manner of Collision in Multi-Vehicle Crashes

Manner of Collision Type	Number of Crashes							
	Total	Percent of Total Crashes	Fatal	Percent of Fatal Crashes	Injury	Percent of Injury Crashes	PDO	Percent of PDO Crashes
Angle	15,621	15.54%	101	13.43%	5,365	18.29%	10,155	14.42%
Left Turn	17,690	17.60%	90	11.97%	6,484	22.11%	11,116	15.78%
Rear End	39,437	39.23%	70	9.31%	11,403	38.88%	27,964	39.70%
Head-On	2,193	2.18%	88	11.70%	986	3.36%	1,119	1.59%
Sideswipe (same)	17,269	17.18%	21	2.79%	2,267	7.73%	14,981	21.27%
Sideswipe (opposite)	1,660	1.65%	25	3.32%	408	1.39%	1,227	1.74%
U-Turn	504	0.50%	8	1.06%	157	0.54%	339	0.48%
Other*	5,460	5.43%	336	44.68%	2,126	7.25%	2,998	4.26%
Unknown	684	0.68%	13	1.73%	131	0.45%	540	0.77%
TOTAL	100,518	100.00%	752	100.00%	29,327	100.00%	70,439	100.00%

*Other includes pedestrian and pedalcyclist crashes

Table 3 – 2
Lighting Conditions

Type of Lighting Conditions	Number of Crashes				Number of Persons	
	Total	Fatal	Injury	PDO	Killed	Injured
Daylight	83,021	411	24,035	58,575	456	35,330
Dawn	2,000	23	569	1,408	26	806
Dusk	3,235	25	1,006	2,204	27	1,428
Dark - Lighted	24,894	327	7,360	17,207	356	10,796
Dark - Not Lighted	7,012	189	2,065	4,758	219	3,029
Dark - Unknown Lighting	423	10	69	344	13	90
Unknown	760	78	99	583	83	154
TOTAL	121,345	1,063	35,203	85,079	1,180	51,633

Table 3 – 3
Weather Conditions

Type of Weather Conditions	Number of Crashes				Number of Persons	
	Total	Fatal	Injury	PDO	Killed	Injured
Clear	104,782	792	30,563	73,427	885	44,806
Cloudy	10,061	87	3,043	6,931	94	4,438
Sleet/Hail	199	1	64	134	1	92
Rain	4,374	20	1,178	3,176	20	1,673
Snow or Blowing Snow	662	3	125	534	3	185
Severe Crosswinds	8	0	2	6	0	2
Blowing Sand, Soil, Dirt	121	0	35	86	0	67
Fog, Smog, Smoke	37	0	12	25	0	17
Other	78	1	22	55	2	40
Unknown	1,023	159	159	705	175	313
TOTAL	121,345	1,063	35,203	85,079	1,180	51,633

Section 3: – Crash Descriptions

Table 3 – 4
Road Surface Conditions

Type of Road Surface Condition	Number of Drivers				Number of Persons	
	Total	In Fatal Crashes	In Injury Crashes	In PDO Crashes	Killed	Injured
Dry	219,153	1,449	65,352	152,352	963	48,573
Wet	9,356	44	2,755	6,557	29	2,202
Snow/Slush	1,004	5	205	794	3	192
Ice/Frost	581	7	131	443	4	116
Water (standing or moving)	321	1	70	250	1	74
Mud, Dirt, Gravel, Sand	539	9	198	332	8	239
Other	92	0	29	63	0	23
Unknown	3,717	219	492	3,006	172	214
TOTAL	234,763	1,734	69,232	163,797	1,180	51,633

Table 3 – 5
Roadway Grade

Type of Roadway Grade	Number of Drivers				Number of Persons	
	Total	In Fatal Crashes	In Injury Crashes	In PDO Crashes	Killed	Injured
Level	218,817	1,345	64,623	152,849	871	47,818
Downhill	6,942	99	2,321	4,522	80	2,097
Uphill	5,703	75	1,798	3,830	62	1,505
Hillcrest	14	0	2	12	0	3
Sag/Dip/Bottom	22	0	5	17	0	4
Unknown	3,265	215	483	2,567	167	206
TOTAL	234,763	1,734	69,232	163,797	1,180	51,633

Table 3 – 6
Roadway Alignment

Type of Roadway Alignment	Number of Drivers				Number of Persons	
	Total	In Fatal Crashes	In Injury Crashes	In PDO Crashes	Killed	Injured
Straight	218,509	1,365	65,045	152,099	872	47,999
Curve Left	6,308	88	1,908	4,312	78	1,784
Curve Right	6,121	79	1,710	4,332	67	1,601
Unknown	3,825	202	569	3,054	163	249
TOTAL	234,763	1,734	69,232	163,797	1,180	51,633

Section 3: – Crash Descriptions

Chart 3 – 1

All Crashes vs. Fatal Crashes by Time of Day - Weekdays

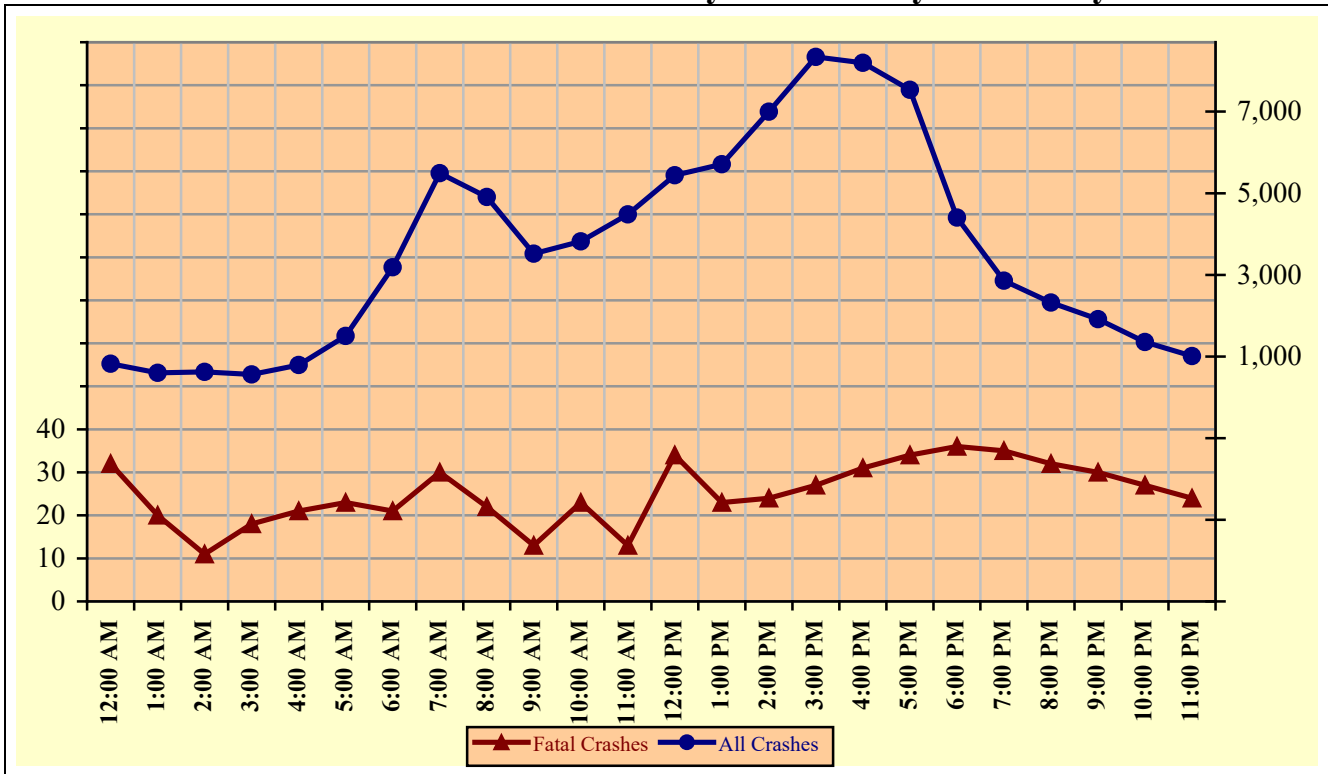
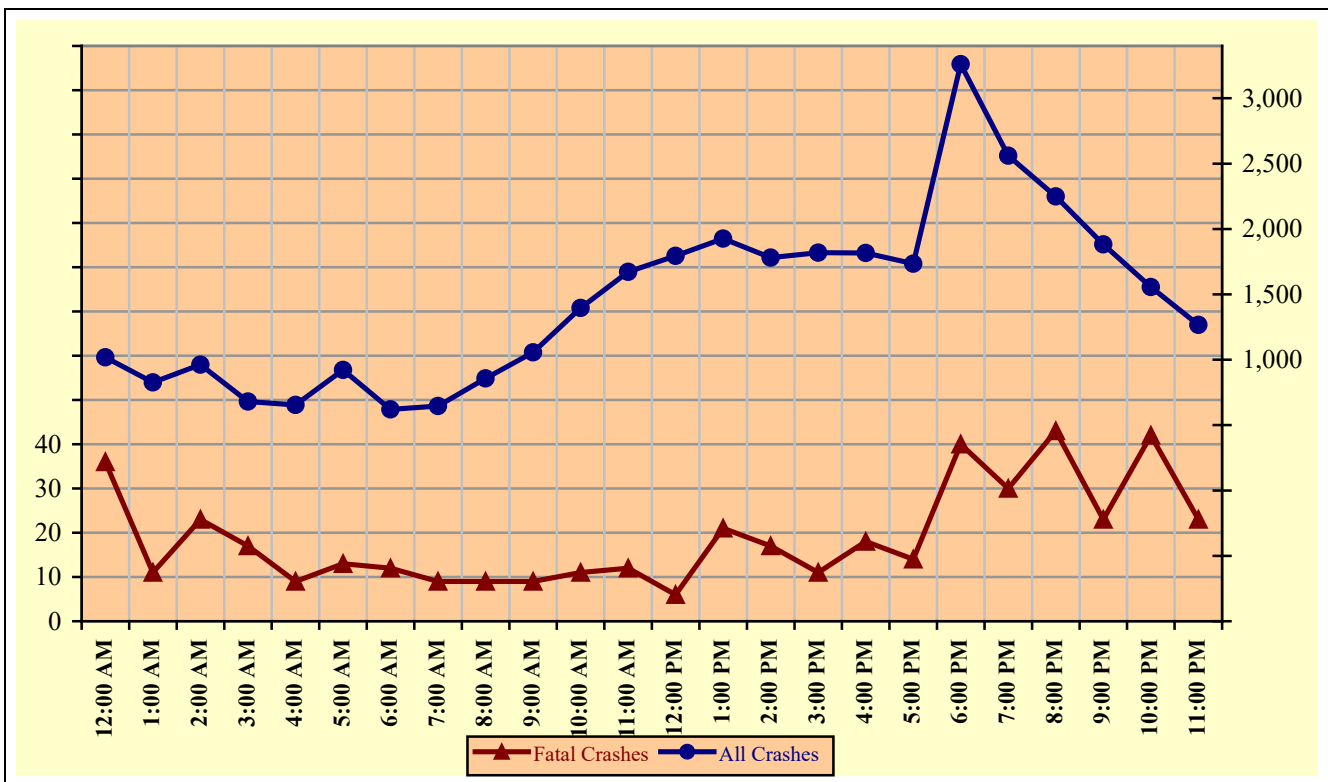


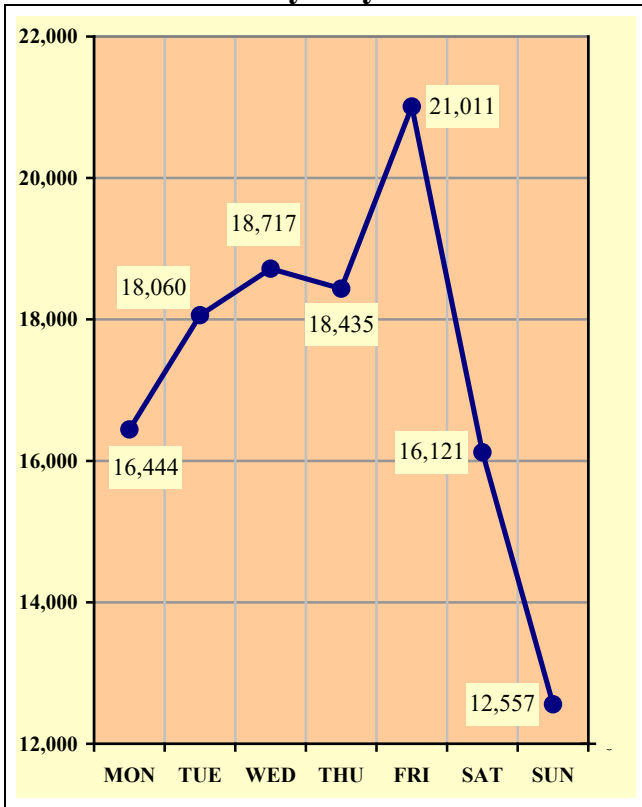
Chart 3 – 2

All Crashes vs. Fatal Crashes by Time of Day - Weekends

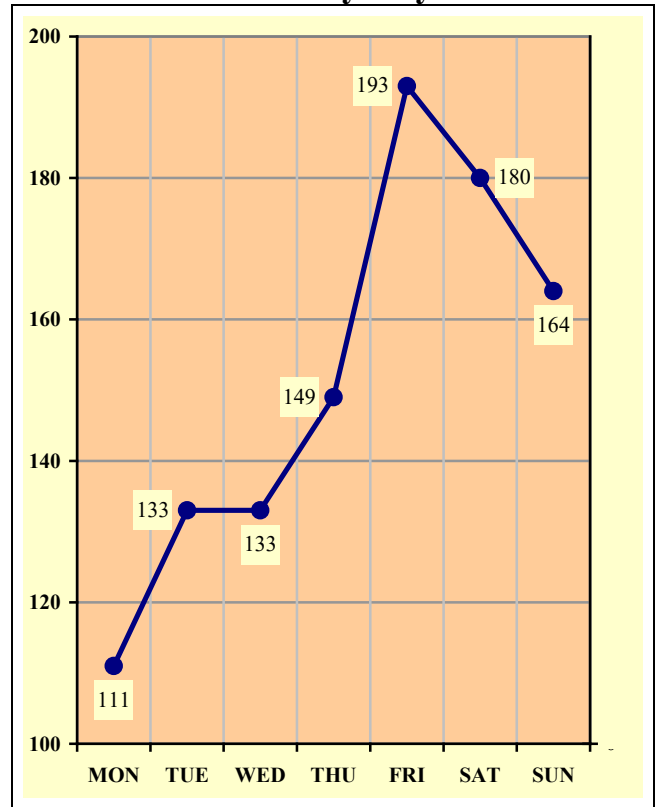


Section 3: – Crash Descriptions

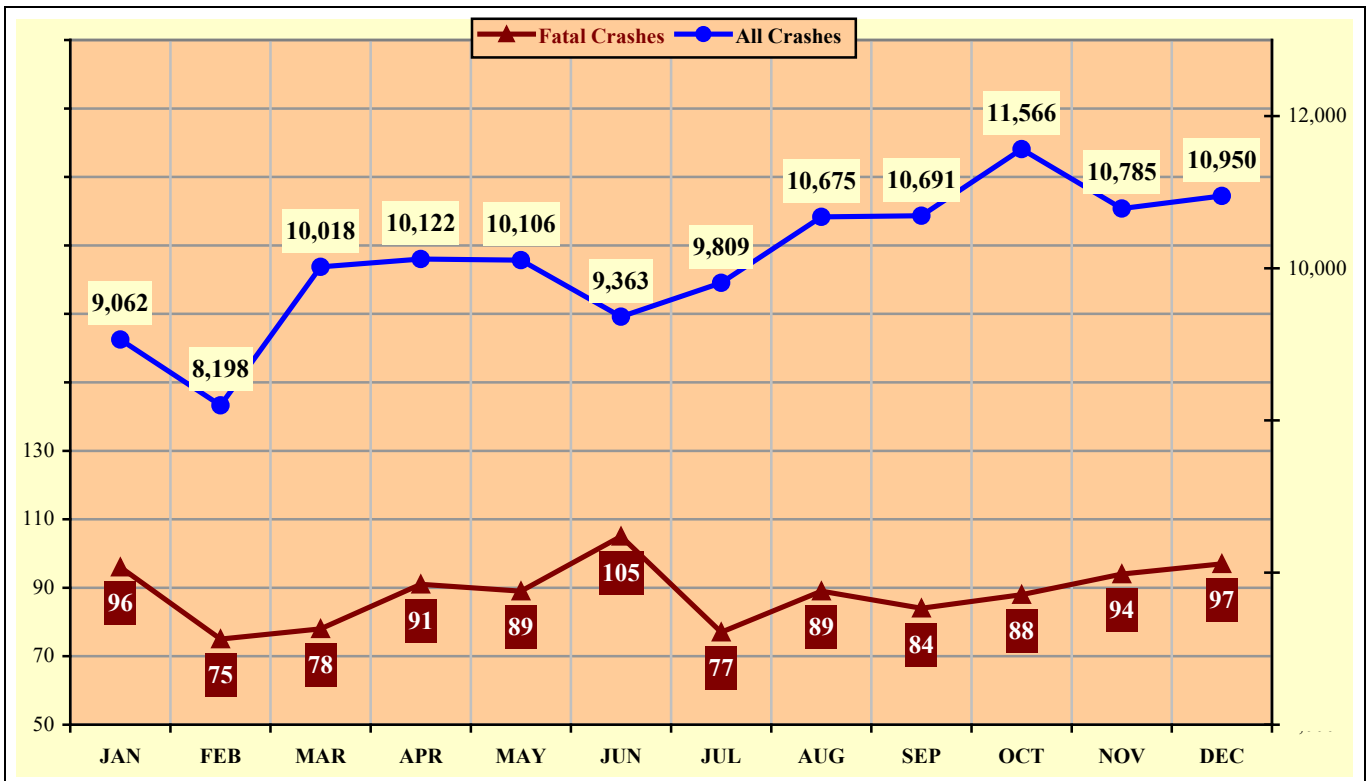
**Chart 3 – 3
Crashes by Day of Week**



**Chart 3 – 4
Fatal Crashes by Day of Week**



**Chart 3 – 5
All Crashes vs. Fatal Crashes by Month**

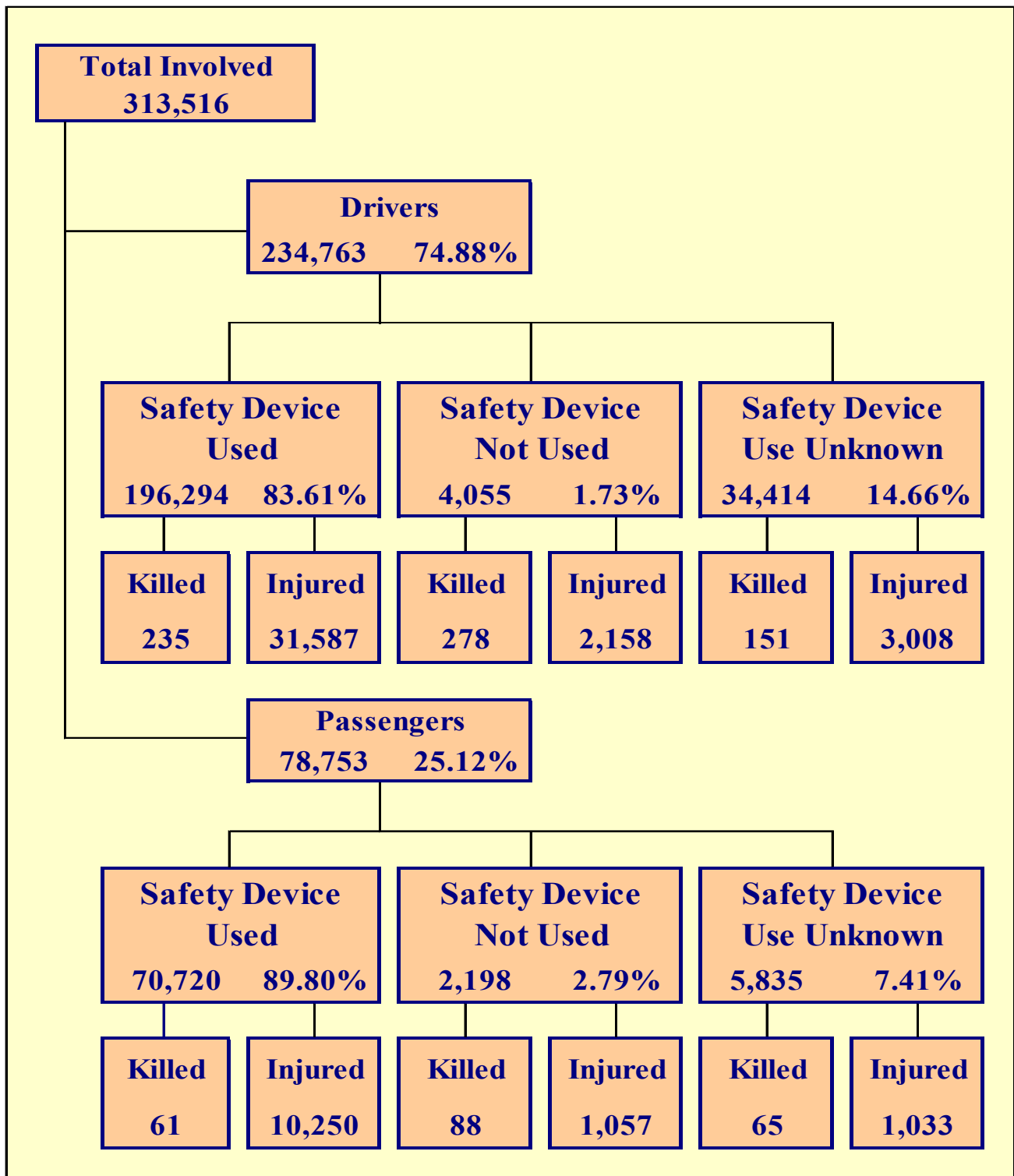


Section 3: – Crash Descriptions

Table 3 – 7
Crashes by Hour and Day of Week

Hour Beginning	Total Crashes		Monday		Tuesday		Wednesday		Thursday		Friday		Saturday		Sunday		Weekdays		Weekends	
	All	Fatal	All	Fatal	All	Fatal	All	Fatal	All	Fatal	All	Fatal	All	Fatal	All	Fatal	All	Fatal	All	Fatal
12:00 AM	1,842	68	225	12	176	5	186	8	201	8	261	11	346	10	447	14	824	32	1,018	36
1:00 AM	1,427	31	160	2	120	8	124	4	173	4	183	4	329	5	338	4	600	20	827	11
2:00 AM	1,586	34	177	4	137	2	133	2	162	2	192	5	396	10	389	9	624	11	962	23
3:00 AM	1,239	35	145	3	119	3	144	7	134	2	162	6	280	11	255	3	559	18	680	17
4:00 AM	1,444	30	166	5	205	3	175	3	206	9	204	6	232	3	256	1	790	21	654	9
5:00 AM	2,425	36	369	5	402	5	381	3	350	10	370	5	267	6	286	2	1,503	23	922	13
6:00 AM	3,808	33	576	1	705	6	705	3	641	3	561	8	323	4	297	8	3,188	21	620	12
7:00 AM	6,139	39	967	8	1,153	4	1,216	5	1,202	6	955	7	368	5	278	4	5,493	30	646	9
8:00 AM	5,764	31	846	0	1,031	4	1,139	4	954	7	937	7	515	1	342	8	4,907	22	857	9
9:00 AM	4,576	22	680	2	654	1	723	4	698	3	764	3	605	6	452	3	3,519	13	1,057	9
10:00 AM	5,218	34	712	7	744	5	773	4	757	2	836	5	822	6	574	5	3,822	23	1,396	11
11:00 AM	6,154	25	774	2	818	4	918	2	912	2	1,060	3	988	4	684	8	4,482	13	1,672	12
12:00 PM	7,237	40	997	6	1,036	9	1,152	4	1,003	5	1,254	10	1,031	5	764	1	5,442	34	1,795	6
1:00 PM	7,635	44	1,071	8	1,024	1	1,150	5	1,122	6	1,342	3	1,121	11	805	10	5,709	23	1,926	21
2:00 PM	8,778	41	1,275	4	1,388	5	1,408	7	1,337	6	1,589	2	1,031	11	750	6	6,997	24	1,781	17
3:00 PM	10,159	38	1,534	1	1,666	4	1,639	8	1,631	10	1,870	4	1,010	6	809	5	8,340	27	1,819	11
4:00 PM	10,011	49	1,399	5	1,613	3	1,629	5	1,706	9	1,847	9	1,027	11	790	7	8,194	31	1,817	18
5:00 PM	9,268	48	1,277	3	1,594	6	1,565	6	1,513	8	1,585	11	990	6	744	8	7,534	34	1,734	14
6:00 PM	7,666	76	944	5	1,159	13	1,166	11	1,136	7	1,387	15	1,069	12	805	13	4,405	36	3,261	40
7:00 PM	5,417	65	618	8	697	9	735	6	806	12	1,023	13	836	9	702	8	2,856	35	2,561	30
8:00 PM	4,570	75	547	6	570	10	605	11	599	5	797	18	808	15	644	10	2,321	32	2,249	43
9:00 PM	3,795	53	442	4	458	9	484	9	529	8	695	8	685	8	502	7	1,913	30	1,882	23
10:00 PM	2,911	69	304	6	346	4	336	7	369	10	620	21	576	8	360	13	1,355	27	1,556	42
11:00 PM	2,276	47	239	4	245	10	231	5	294	5	517	9	466	7	284	7	1,009	24	1,267	23
TOTAL	121,345	1,063	16,444	111	18,060	133	18,717	133	18,435	149	21,011	193	16,121	180	12,557	164	86,386	604	34,959	459

Crashes during Weekends accounted for 28.81% of all crashes and 43.18% of Fatal Crashes.



Section 4: – Safety Devices

**Table 4 – 1
Child Safety Device Usage (less than five years old)**

Severity of Injury	Safety Device Used	Percent of Safety Device Used	Safety Device Not Used	Percent of Safety Device Not Used	Safety Device Use Unknown	Percent of Unknown
No Injury	8,320	89.58%	66	53.66%	208	73.76%
Unknown Injury	185	1.99%	3	2.44%	30	10.64%
Possible Injury	500	5.38%	20	16.26%	22	7.80%
Suspected Minor Injury	250	2.69%	16	13.01%	14	4.96%
Suspected Serious Injury	31	0.33%	15	12.20%	6	2.13%
Fatal Injury	2	0.02%	3	2.44%	2	0.71%
TOTALS	9,288	100.00%	123	100.00%	282	100.00%

**Table 4 – 2
Driver Safety Device Usage**

Severity of Injury	Safety Device Used	Percent of Safety Device Used	Safety Device Not Used	Percent of Safety Device Not Used	Safety Device Use Unknown	Percent of Unknown
No Injury	162,037	82.55%	1,531	37.76%	19,082	55.45%
Unknown Injury	2,435	1.24%	88	2.17%	12,173	35.37%
Possible Injury	17,165	8.74%	587	14.48%	1,255	3.65%
Suspected Minor Injury	13,017	6.63%	1,048	25.84%	1,284	3.73%
Suspected Serious Injury	1,405	0.72%	523	12.90%	469	1.36%
Fatal Injury	235	0.12%	278	6.86%	151	0.44%
TOTALS	196,294	100.00%	4,055	100.00%	34,414	100.00%

**Table 4 – 3
Passenger Safety Device Usage**

Severity of Injury	Safety Device Used	Percent of Safety Device Used	Safety Device Not Used	Percent of Safety Device Not Used	Safety Device Use Unknown	Percent of Unknown
No Injury	59,278	83.82%	1,013	46.09%	3,955	67.78%
Unknown Injury	1,131	1.60%	40	1.82%	782	13.40%
Possible Injury	5,866	8.29%	312	14.19%	452	7.75%
Suspected Minor Injury	3,924	5.55%	493	22.43%	401	6.87%
Suspected Serious Injury	460	0.65%	252	11.46%	180	3.08%
Fatal Injury	61	0.09%	88	4.00%	65	1.11%
TOTALS	70,720	100.00%	2,198	100.00%	5,835	100.00%

Section 4: – Safety Devices

Table 4 – 4
Driver Safety Device Usage by Gender

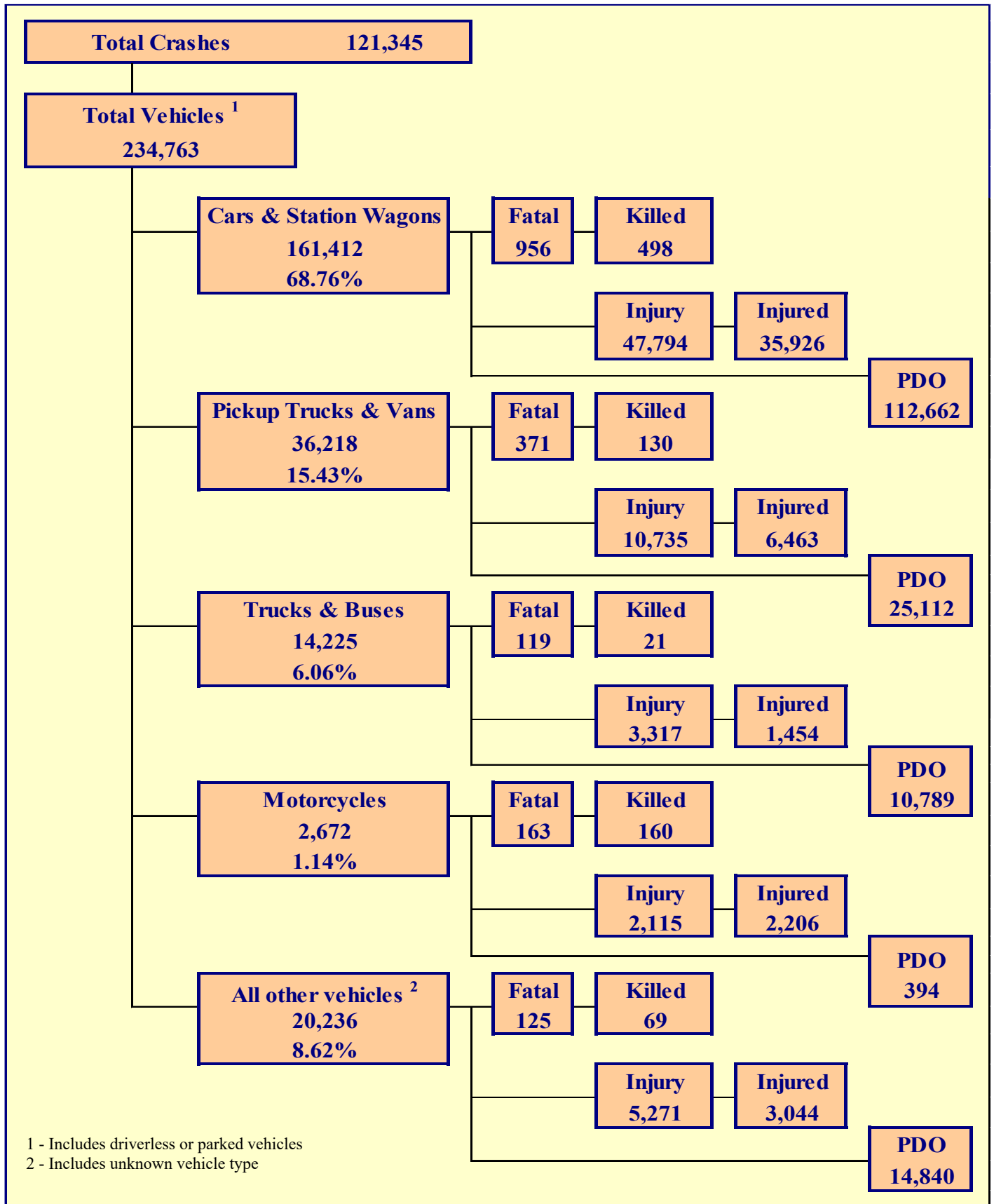
Gender of Driver	Number of Drivers							Total	Percent of Total
	Safety Device Used	Percent of Safety Device Used	Safety Device Not Used	Percent of Safety Device Not Used	Safety Device Use Unknown	Percent of Unknown			
Male	114,178	58.17%	2,912	71.81%	10,927	31.75%	128,017	54.53%	
Female	81,882	41.71%	1,094	26.98%	5,108	14.84%	88,084	37.52%	
Unknown	234	0.12%	49	1.21%	18,379	53.41%	18,662	7.95%	
TOTAL	196,294	100.00%	4,055	100.00%	34,414	100.00%	234,763	100.00%	

Table 4 – 5
Driver Safety Device Usage by Age

Driver Age Group	Number of Drivers							Total	Percent of Total
	Safety Device Used	Percent of Safety Device Used	Safety Device Not Used	Percent of Safety Device Not Used	Safety Device Use Unknown	Percent of Unknown			
15 & Under	321	0.16%	30	0.74%	68	0.20%	419	0.18%	
16	3,170	1.61%	51	1.26%	170	0.49%	3,391	1.44%	
17	4,584	2.34%	92	2.27%	256	0.74%	4,932	2.10%	
18	5,885	3.00%	125	3.08%	345	1.00%	6,355	2.71%	
19	6,153	3.13%	147	3.63%	437	1.27%	6,737	2.87%	
20	6,055	3.08%	126	3.11%	384	1.12%	6,565	2.80%	
21	6,016	3.06%	123	3.03%	416	1.21%	6,555	2.79%	
22	5,659	2.88%	111	2.74%	394	1.14%	6,164	2.63%	
23	5,430	2.77%	141	3.48%	423	1.23%	5,994	2.55%	
24	5,259	2.68%	136	3.35%	422	1.23%	5,817	2.48%	
25-34	44,330	22.58%	1,064	26.24%	3,564	10.36%	48,958	20.85%	
35-44	32,726	16.67%	684	16.87%	2,497	7.26%	35,907	15.29%	
45-54	27,185	13.85%	500	12.33%	1,888	5.49%	29,573	12.60%	
55-64	22,403	11.41%	369	9.10%	1,553	4.51%	24,325	10.36%	
65-74	13,209	6.73%	175	4.32%	807	2.34%	14,191	6.04%	
75 & Older	7,052	3.59%	94	2.32%	431	1.25%	7,577	3.23%	
Unknown	857	0.44%	87	2.15%	20,359	59.16%	21,303	9.07%	
TOTAL	196,294	100.00%	4,055	100.00%	34,414	100.00%	234,763	100.00%	

Section 5

Motor Vehicle and Driver Descriptions



Section 5: – Motor Vehicle and Driver Descriptions

Table 5 – 1

Arizona Motor Vehicle Registrations

Privately Owned Vehicles	5,687,978
Commercial Vehicles	348,943
Motorcycles	278,464
Mopeds	246
Other	152,768
TOTAL	6,468,399
Source: MVD - Currently Registered Vehicles by County Listing, dated 12/31/2021.	

Table 5 – 2

Motor Vehicle Crash Involvement by Vehicle Type

Motor Vehicle Type	Number of Vehicles				
	Total	Percent of Total	In Fatal Crashes	In Injury Crashes	In PDO Crashes
Passenger Cars (Sedans, Convertibles, etc.)	110,426	47.037%	605	32,474	77,347
Station Wagons	50,986	21.718%	351	15,320	35,315
Pickup Trucks	31,701	13.503%	320	9,446	21,935
Vans	4,517	1.924%	51	1,289	3,177
Truck Tractor (with or without Semi-Trailer)	2,831	1.206%	81	784	1,966
Concrete Mixer Trucks	27	0.012%	1	10	16
Dump Trucks	146	0.062%	3	33	110
Garbage Trucks	102	0.043%	0	11	91
Tanker Trucks	26	0.011%	0	7	19
Wrecker or Tow Trucks	61	0.026%	1	8	52
Other Truck Combinations	10,193	4.342%	23	2,308	7,862
School Bus	83	0.035%	3	16	64
Commercial or Non-Commercial Bus	756	0.322%	7	140	609
Motorcycle (two or three wheel)	2,672	1.138%	163	2,115	394
All Terrain Vehicle or Cycle	187	0.080%	16	123	48
Golf Carts	94	0.040%	3	59	32
Moped	25	0.011%	0	23	2
Recreational Vehicle	315	0.134%	3	80	232
Motor Home or House Car	79	0.034%	2	13	64
Fire Trucks	51	0.022%	0	4	47
Ambulances	53	0.023%	1	12	40
Other Types Of Vehicles	56	0.024%	3	26	27
Vehicle Type Unknown	19,376	8.253%	97	4,931	14,348
TOTAL	234,763	100.00%	1,734	69,232	163,797

Section 5: – Motor Vehicle and Driver Descriptions

Table 5 – 3

Hit and Run Drivers Involved in Crashes

Hit and Run	Number of Crashes				Number of Persons	
	Total	Fatal	Injury	PDO	Killed	Injured
Yes	16,988	88	2,975	13,925	90	3,802
No	104,357	975	32,228	71,154	1,090	47,831
TOTAL	121,345	1,063	35,203	85,079	1,180	51,633

Table 5 – 4

Gender of Drivers Involved in Crashes

Gender of Driver	Number of Drivers							
	Total	Percent of Total	In Fatal Crashes	Percent of Fatal	In Injury Crashes	Percent of Injury	In PDO Crashes	Percent of PDO
Male	128,017	54.53%	1,184	68.28%	38,851	56.12%	87,982	53.71%
Female	88,084	37.52%	439	25.32%	27,517	39.75%	60,128	36.71%
Unknown	18,662	7.95%	111	6.40%	2,864	4.14%	15,687	9.58%
TOTAL	234,763	100.00%	1,734	100.00%	69,232	100.00%	163,797	100.00%

Table 5 – 5

License Status of Drivers Involved in Crashes

License Status of Driver	Number of Drivers							
	Total	Percent of Total	In Fatal Crashes	Percent of Fatal	In Injury Crashes	Percent of Injury	In PDO Crashes	Percent of PDO
Arizona License	162,424	69.19%	1,233	71.11%	49,421	71.38%	111,770	68.24%
All Others*	72,339	30.81%	501	28.89%	19,811	28.62%	52,027	31.76%
TOTAL	234,763	100.00%	1,734	100.00%	69,232	100.00%	163,797	100.00%

*Includes drivers that have a suspended, revoked, out-of-state or country license, as well as drivers with no license or unknown license type

Table 5 – 6

Passengers Killed and Injured by Age and Gender

Age of Passenger	Passengers Killed				Passengers Injured			
	Total	Male	Female	Gender Unknown	Total	Male	Female	Gender Unknown
0-4	5	2	3	0	676	355	321	0
5-9	11	6	5	0	894	459	435	0
10-14	9	4	5	0	1,030	454	576	0
15-19	32	22	10	0	1,818	739	1,079	0
20-24	22	11	11	0	1,475	566	909	0
25-34	31	13	18	0	1,875	766	1,109	0
35-44	23	15	8	0	1,219	423	796	0
45-54	22	9	13	0	1,066	336	730	0
55-64	20	8	12	0	860	229	631	0
65-74	12	1	11	0	695	159	536	0
75 & Older	18	4	14	0	460	128	332	0
Unknown	9	3	2	4	272	109	134	29
TOTAL	214	98	112	4	12,340	4,723	7,588	29

Section 5: – Motor Vehicle and Driver Descriptions

Table 5 – 7

Drivers and Passengers Killed and Injured by Vehicle Type

Motor Vehicle Type	Number of Drivers		Number of Passengers	
	Killed	Injured	Killed	Injured
Passenger Cars (Sedans, Convertibles, etc.)	224	18,644	107	5,972
Station Wagons	113	8,145	54	3,165
Pickup Trucks	91	4,115	24	1,449
Vans	11	579	4	320
Truck Tractor (with or without Semi-Trailer)	13	249	3	60
Concrete Mixer Trucks	0	3	0	0
Dump Trucks	0	4	0	1
Garbage Trucks	0	2	0	0
Tanker Trucks	0	1	0	0
Wrecker or Tow Trucks	0	1	0	1
Other Truck Combinations	4	754	0	226
School Bus	0	6	0	9
Commercial or Non-Commercial Bus	0	32	1	105
Motorcycle (two or three wheel)	154	2,060	6	146
All Terrain Vehicle or Cycle	14	101	1	64
Golf Carts	3	49	0	21
Moped	0	21	0	0
Recreational Vehicle	1	50	0	19
Motor Home or House Car	0	9	0	2
Fire Trucks	0	2	0	2
Ambulances	0	3	0	5
Other Types Of Vehicles	3	16	0	11
Vehicle Type Unknown	33	1,907	14	762
TOTAL	664	36,753	214	12,340

Table 5 – 8

Drivers Killed and Injured by Age and Gender

Age of Driver	Drivers Killed				Drivers Injured			
	Total	Male	Female	Gender Unknown	Total	Male	Female	Gender Unknown
0-4	1	1	0	0	0	0	0	0
5-9	0	0	0	0	0	0	0	0
10-14	1	1	0	0	28	19	9	0
15-19	32	23	9	0	3,265	1,705	1,560	0
20-24	80	51	29	0	5,166	2,734	2,432	0
25-34	122	94	28	0	8,479	4,583	3,896	0
35-44	98	66	32	0	6,009	3,224	2,785	0
45-54	102	82	20	0	5,075	2,735	2,340	0
55-64	98	79	19	0	4,358	2,417	1,941	0
65-74	72	60	12	0	2,655	1,454	1,201	0
75 & Older	43	30	13	0	1,516	840	676	0
Unknown	15	5	2	8	202	94	39	69
TOTAL	664	492	164	8	36,753	19,805	16,879	69

Section 5: – Motor Vehicle and Driver Descriptions

**Table 5 – 9
Licensed Drivers in Arizona by Age**

Driver Age Group	Male Number	Percent of Male	Female Number	Percent of Female	Unknown Number	Total Number	Percent of Total	Cumulative Percent
16	13,463	0.46%	13,316	0.46%	8	26,787	0.46%	0.46%
17	23,410	0.80%	22,092	0.77%	10	45,512	0.78%	1.24%
18	31,615	1.08%	29,289	1.02%	3	60,907	1.05%	2.29%
19	36,424	1.24%	33,837	1.18%	2	70,263	1.21%	3.50%
20	39,248	1.34%	36,689	1.28%	1	75,938	1.31%	4.81%
21	43,448	1.48%	40,491	1.41%	3	83,942	1.45%	6.26%
22	44,421	1.51%	41,551	1.45%	1	85,973	1.48%	7.74%
23	45,989	1.57%	43,048	1.50%	4	89,041	1.53%	9.27%
24	47,589	1.62%	43,600	1.52%	2	91,191	1.57%	10.84%
25-34	519,108	17.69%	494,634	17.22%	23	1,013,765	17.45%	28.29%
35-44	508,545	17.33%	492,031	17.12%	8	1,000,584	17.23%	45.52%
45-54	499,563	17.02%	469,350	16.34%	3	968,916	16.68%	62.20%
55-64	495,892	16.89%	490,698	17.08%	10	986,600	16.99%	79.18%
65-74	351,311	11.97%	379,826	13.22%	1	731,138	12.59%	91.77%
75 & older	235,177	8.01%	242,810	8.45%	1	477,988	8.23%	100.00%
TOTALS	2,935,203	100.00%	2,873,262	100.00%	80	5,808,545	100.00%	100.00%

Source: MVD - Point-in-Time Driver Credential Report/All Driver Licenses by Age, Gender, & Class, dated 12/31/2021.

**Table 5 – 10
Driver Involvement by Age**

Driver Age Group	Number of Drivers							
	Total	Percent of Total	In Fatal Crashes	Percent of Fatal	In Injury Crashes	Percent of Injury	In PDO Crashes	Percent of PDO
15 & Under	419	0.18%	3	0.17%	147	0.21%	269	0.16%
16	3,391	1.44%	12	0.69%	866	1.25%	2,513	1.53%
17	4,932	2.10%	27	1.56%	1,310	1.89%	3,595	2.19%
18	6,355	2.71%	30	1.73%	1,848	2.67%	4,477	2.73%
19	6,737	2.87%	35	2.02%	2,030	2.93%	4,672	2.85%
20	6,565	2.80%	40	2.31%	2,005	2.90%	4,520	2.76%
21	6,555	2.79%	45	2.60%	2,029	2.93%	4,481	2.74%
22	6,164	2.63%	33	1.90%	1,798	2.60%	4,333	2.65%
23	5,994	2.55%	52	3.00%	1,796	2.59%	4,146	2.53%
24	5,817	2.48%	27	1.56%	1,736	2.51%	4,054	2.48%
25-34	48,958	20.85%	339	19.55%	15,236	22.01%	33,383	20.38%
35-44	35,907	15.29%	282	16.26%	11,083	16.01%	24,542	14.98%
45-54	29,573	12.60%	242	13.96%	9,153	13.22%	20,178	12.32%
55-64	24,325	10.36%	230	13.26%	7,638	11.03%	16,457	10.05%
65-74	14,191	6.04%	129	7.44%	4,559	6.59%	9,503	5.80%
75 & Older	7,577	3.23%	73	4.21%	2,535	3.66%	4,969	3.03%
Unknown	21,303	9.07%	135	7.79%	3,463	5.00%	17,705	10.81%
TOTAL	234,763	100.00%	1,734	100.00%	69,232	100.00%	163,797	100.00%

Section 5: – Motor Vehicle and Driver Descriptions

**Table 5 – 11
Driver Violations**

Type of Violation or Behavior	Number of Drivers							
	Total	Percent of Total	In Fatal Crashes	Percent of Fatal	In Injury Crashes	Percent of Injury	In PDO Crashes	Percent of PDO
No Improper Action	115,370	49.14%	680	39.22%	34,634	50.03%	80,056	48.88%
Speed too Fast for Conditions	35,673	15.20%	170	9.80%	11,238	16.23%	24,265	14.81%
Exceeded Lawful Speed	835	0.36%	46	2.65%	342	0.49%	447	0.27%
Failed to Yield Right-Of-Way	21,531	9.17%	94	5.42%	7,552	10.91%	13,885	8.48%
Followed Too Closely	6,755	2.88%	7	0.40%	1,723	2.49%	5,025	3.07%
Ran Stop Sign	1,354	0.58%	12	0.69%	576	0.83%	766	0.47%
Disregarded Traffic Signal	5,726	2.44%	62	3.58%	2,456	3.55%	3,208	1.96%
Made Improper Turn	4,230	1.80%	9	0.52%	1,088	1.57%	3,133	1.91%
Drove in Opposing Lane	213	0.09%	9	0.52%	72	0.10%	132	0.08%
Drove Left of Center Line	1,190	0.51%	69	3.98%	460	0.66%	661	0.40%
Passed in No-Passing Zone	134	0.06%	6	0.35%	37	0.05%	91	0.06%
Unsafe Lane Change	8,271	3.52%	18	1.04%	1,236	1.79%	7,017	4.28%
Failed to Keep in Proper Lane	6,608	2.81%	114	6.57%	1,716	2.48%	4,778	2.92%
Crossed Median	65	0.03%	18	1.04%	30	0.04%	17	0.01%
Aggressive Driving	439	0.19%	12	0.69%	149	0.22%	278	0.17%
Wrong Way Driving	143	0.06%	20	1.15%	76	0.11%	47	0.03%
Road Rage*	627	0.27%	1	0.06%	127	0.18%	499	0.30%
Other	5,493	2.34%	44	2.54%	1,318	1.90%	4,131	2.52%
Unknown	20,106	8.56%	343	19.78%	4,402	6.36%	15,361	9.38%
TOTAL	234,763	100.00%	1,734	100.00%	69,232	100.00%	163,797	100.00%

*Note: Road Rage data is incomplete due to some agencies using older versions of the crash report.

**Table 5 – 12
Driver Physical Condition**

Type of Condition	Number of Drivers							
	Total	Percent of Total	In Fatal Crashes	Percent of Fatal	In Injury Crashes	Percent of Injury	In PDO Crashes	Percent of PDO
No Apparent Influence	200,771	85.52%	892	51.44%	59,812	86.39%	140,067	85.51%
Alcohol	5,500	2.34%	181	10.44%	2,247	3.25%	3,072	1.88%
Illegal Drugs	794	0.34%	66	3.81%	359	0.52%	369	0.23%
Medications	183	0.08%	7	0.40%	84	0.12%	92	0.06%
Marijuana	178	0.08%	28	1.61%	79	0.11%	71	0.04%
Illness or Physical Impairment	777	0.33%	10	0.58%	412	0.60%	355	0.22%
Fell Asleep or Fatigued	1,689	0.72%	13	0.75%	664	0.96%	1,012	0.62%
Other	694	0.30%	10	0.58%	234	0.34%	450	0.27%
Unknown	24,177	10.30%	527	30.39%	5,341	7.71%	18,309	11.18%
TOTAL	234,763	100.00%	1,734	100.00%	69,232	100.00%	163,797	100.00%

Section 5: – Motor Vehicle and Driver Descriptions

Table 5 – 13

Distracted Driving Behavior

Type of Distraction	Number of Drivers							
	Total	Percent of Total	In Fatal Crashes	Percent of Fatal	In Injury Crashes	Percent of Injury	In PDO Crashes	Percent of PDO
Not Distracted	174,330	74.26%	767	44.23%	51,975	75.07%	121,588	74.23%
Talking on Hands Free Device	224	0.10%	5	0.29%	83	0.12%	136	0.08%
Talking on Hand Held Device	297	0.13%	1	0.06%	91	0.13%	205	0.13%
Passenger	671	0.29%	10	0.58%	251	0.36%	410	0.25%
Other Activity with an Electronic Device	1,070	0.46%	6	0.35%	332	0.48%	732	0.45%
Manually Operating an Electronic Device	663	0.28%	4	0.23%	210	0.30%	449	0.27%
Other Inside the Vehicle (eating, drinking, etc.)	2,589	1.10%	8	0.46%	844	1.22%	1,737	1.06%
Outside the Vehicle (includes unspecified distractions)	2,008	0.86%	8	0.46%	675	0.97%	1,325	0.81%
Distracted Unknown Reason	1,782	0.76%	8	0.46%	575	0.83%	1,199	0.73%
Unknown	51,129	21.78%	917	52.88%	14,196	20.50%	36,016	21.99%
TOTAL	234,763	100.00%	1,734	100.00%	69,232	100.00%	163,797	100.00%

Table 5 – 14

Secondary Crashes

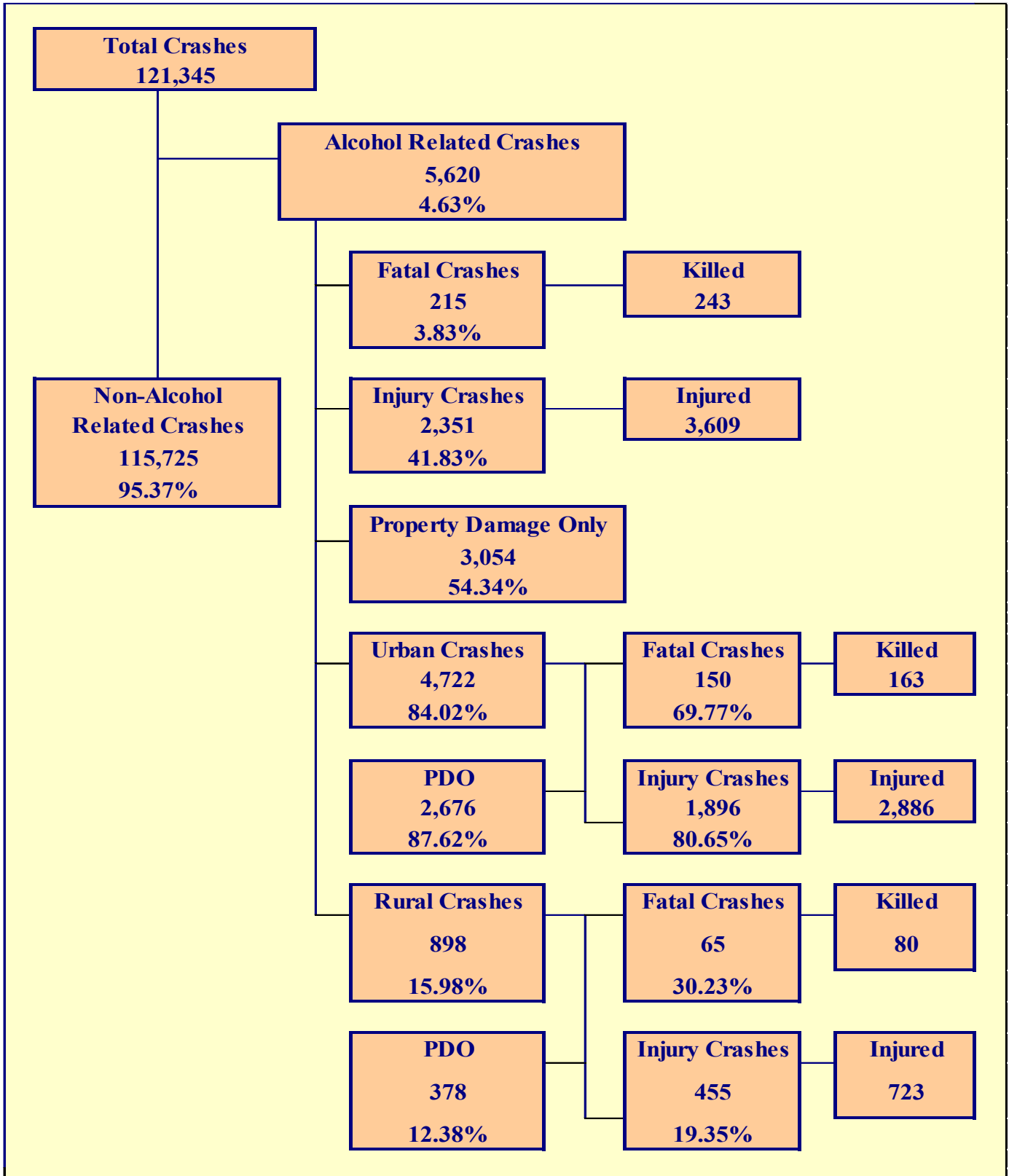
Secondary Crash	Number of Crashes				Number of Persons	
	Total	Fatal	Injury	PDO	Killed	Injured
Yes	1,824	18	643	1,163	19	1,077
No	100,610	969	29,140	70,501	1,072	42,675
Unknown	18,911	76	5,420	13,415	89	7,881
TOTAL	121,345	1,063	35,203	85,079	1,180	51,633

Table 5 – 15

Road Rage Crashes

Road Rage	Number of Crashes				Number of Persons	
	Total	Fatal	Injury	PDO	Killed	Injured
Yes	627	1	127	499	1	187
No	120,718	1,062	35,076	84,580	1,179	51,446
TOTAL	121,345	1,063	35,203	85,079	1,180	51,633

Note: Road Rage data is incomplete due to some agencies using older versions of the crash report.



Section 6: – Alcohol Related Crashes

The statistics in the Alcohol Related section represent those crashes where the investigating officer indicated that a driver, pedestrian, or pedalcyclist had been drinking an alcoholic beverage and may or may not be substantiated by a blood or breath test. No assumption is to be made that the person was legally intoxicated (blood alcohol content of 0.08% or higher) at the time of the crash.

**Table 6 – 1
Economic Loss Due to Alcohol Related Crashes in Arizona for 2021**

Fatalities	\$2,312,235,153
Suspected Serious Injuries	\$319,289,420
Suspected Minor Injuries	\$250,541,760
Possible Injuries	\$139,142,605
Property Damage Only	\$32,616,720
TOTAL	\$3,053,825,658

Refer to note on Page 4 for Economic Loss Estimates

**Table 6 – 2
Alcohol Related Crash History**

Year	Alcohol Related Crashes	Percent of all Crashes	Persons Killed	Percent of all Fatalities	Persons Injured	Percent of all Injuries
2017	4,921	3.85%	325	32.57%	3,181	5.69%
2018	4,705	3.68%	265	26.21%	3,014	5.61%
2019	4,984	3.80%	258	26.33%	3,024	5.56%
2020	4,570	4.61%	228	21.63%	2,899	6.98%
2021	5,620	4.63%	243	20.59%	3,609	6.99%

**Table 6 – 3
Manner of Collision in Alcohol Related Crashes**

Manner of Collision Type	Number of Crashes							
	Total	Percent of All Crashes	Fatal	Percent of Fatal Crashes	Injury	Percent of Injury Crashes	PDO	Percent of PDO Crashes
Angle	517	15.41%	21	14.69%	272	18.12%	224	13.09%
Left Turn	330	9.84%	19	13.29%	175	11.66%	136	7.95%
Rear End	1,390	41.43%	15	10.49%	606	40.37%	769	44.94%
Head-On	271	8.08%	23	16.08%	132	8.79%	116	6.78%
Sideswipe (same)	426	12.70%	5	3.50%	107	7.13%	314	18.35%
Sideswipe (opposite)	107	3.19%	4	2.80%	36	2.40%	67	3.92%
U-Turn	19	0.57%	1	0.70%	11	0.73%	7	0.41%
Other*	278	8.29%	55	38.46%	153	10.19%	70	4.09%
Unknown	17	0.51%	0	0.00%	9	0.60%	8	0.47%
TOTAL	3,355	100.00%	143	100.00%	1,501	100.00%	1,711	100.00%

Note: Includes only multi-vehicle alcohol related crashes

*Other includes pedestrian and pedalcyclist crashes

Section 6: – Alcohol Related Crashes

Table 6 – 4

Alcohol Related Crashes by First Harmful Event

First Harmful Event Type	Number of Crashes				Number of Persons	
	Total	Fatal	Injury	PDO	Killed	Injured
Collision with Motor Vehicle in Transport	2,669	87	1,228	1,354	109	2,216
Overturning	229	21	154	54	24	225
Collision with Pedestrian	164	45	119	0	45	132
Collision with Pedalcyclist	27	4	23	0	4	24
Collision with Animal	4	0	1	3	0	1
Collision with Fixed Object	2,017	52	696	1,269	54	848
Collision with Non-fixed Object*	484	3	121	360	4	148
Vehicle Fire or Explosion	3	0	2	1	0	2
Other Non-collision**	1	0	1	0	0	1
Unknown	22	3	6	13	3	12
TOTAL	5,620	215	2,351	3,054	243	3,609
*Includes Collision with Parked Vehicles, Trains, Railway Vehicles, and Work Zone Equipment						
**Includes Vehicle Immersion, Jackknife, and Cargo Loss or Shift						

Table 6 – 5

Alcohol Related Crashes by Vehicle Type

Motor Vehicle Type	Number of Vehicles				
	Total	Percent of Total	In Fatal Crashes	In Injury Crashes	In PDO Crashes
Passenger Cars (Sedans, Convertibles, etc.)	2,977	54.127%	76	1,165	1,736
Station Wagons	1,035	18.818%	40	415	580
Pickup Trucks	879	15.982%	30	372	477
Vans	73	1.327%	2	25	46
Truck Tractor (with or without Semi-Trailer)	4	0.073%	0	2	2
Concrete Mixer Trucks	0	0.000%	0	0	0
Dump Trucks	0	0.000%	0	0	0
Garbage Trucks	0	0.000%	0	0	0
Tanker Trucks	0	0.000%	0	0	0
Wrecker or Tow Trucks	0	0.000%	0	0	0
Other Truck Combinations	106	1.927%	0	36	70
School Bus	1	0.018%	0	1	0
Commercial or Non-Commercial Bus	1	0.018%	0	1	0
Motorcycle (two or three wheel)	125	2.273%	20	95	10
All Terrain Vehicle or Cycle	17	0.309%	4	12	1
Golf Carts	8	0.145%	2	5	1
Moped	0	0.000%	0	0	0
Recreational Vehicle	0	0.000%	0	0	0
Motor Home or House Car	2	0.036%	0	1	1
Fire Trucks	0	0.000%	0	0	0
Ambulances	0	0.000%	0	0	0
Other Types Of Vehicles	2	0.036%	0	2	0
Vehicle Type Unknown	270	4.909%	7	115	148
TOTAL	5,500	100.00%	181	2,247	3,072

Section 6: – Alcohol Related Crashes

Table 6 – 6
Lighting Conditions in Alcohol Related Crashes

Type of Lighting Conditions	Number of Crashes				Number of Persons	
	Total	Fatal	Injury	PDO	Killed	Injured
Daylight	1,616	48	743	825	50	1,170
Dawn	84	1	32	51	1	43
Dusk	133	0	70	63	0	109
Dark - Lighted	2,932	92	1,132	1,708	102	1,717
Dark - Not Lighted	785	59	354	372	73	541
Dark - Unknown Lighting	38	4	12	22	5	13
Unknown	32	11	8	13	12	16
TOTAL	5,620	215	2,351	3,054	243	3,609

Table 6 – 7
Road Surface Conditions in Alcohol Related Crashes

Type of Road Surface Condition	Number of Drivers				Number of Persons	
	Total	In Fatal Crashes	In Injury Crashes	In PDO Crashes	Killed	Injured
Dry	5,098	160	2,107	2,831	215	3,415
Wet	294	3	105	186	4	141
Snow/Slush	12	0	5	7	0	6
Ice/Frost	2	0	0	2	0	0
Water (standing or moving)	9	0	2	7	0	6
Mud, Dirt, Gravel, Sand	41	1	20	20	1	29
Other	4	0	1	3	0	1
Unknown	40	17	7	16	23	11
TOTAL	5,500	181	2,247	3,072	243	3,609

Table 6 – 8
Gender of Drivers Involved in Alcohol Related Crashes

Gender of Driver	Number of Drivers							
	Total	Percent of Total	In Fatal Crashes	Percent of Fatal	In Injury Crashes	Percent of Injury	In PDO Crashes	Percent of PDO
Male	3,951	71.84%	139	76.80%	1,645	73.21%	2,167	70.54%
Female	1,519	27.62%	42	23.20%	595	26.48%	882	28.71%
Unknown	30	0.55%	0	0.00%	7	0.31%	23	0.75%
TOTAL	5,500	100.00%	181	100.00%	2,247	100.00%	3,072	100.00%

*In total crashes across the state, 54.53% of the drivers were males.
When alcohol was involved, males accounted for 71.84% of the drivers.*

Section 6: – Alcohol Related Crashes

**Table 6 – 9
Driver Involvement by Age in Alcohol Related Crashes**

Driver Age Group	Number of Drivers							
	Total	Percent of Total	In Fatal Crashes	Percent of Fatal	In Injury Crashes	Percent of Injury	In PDO Crashes	Percent of PDO
15 & Under	4	0.07%	0	0.00%	0	0.00%	4	0.13%
16	15	0.27%	0	0.00%	6	0.27%	9	0.29%
17	34	0.62%	2	1.10%	11	0.49%	21	0.68%
18	85	1.55%	4	2.21%	30	1.34%	51	1.66%
19	127	2.31%	4	2.21%	57	2.54%	66	2.15%
20	136	2.47%	4	2.21%	58	2.58%	74	2.41%
21	209	3.80%	2	1.10%	95	4.23%	112	3.65%
22	225	4.09%	8	4.42%	87	3.87%	130	4.23%
23	233	4.24%	9	4.97%	89	3.96%	135	4.39%
24	209	3.80%	3	1.66%	67	2.98%	139	4.52%
25-34	1,866	33.93%	50	27.62%	760	33.82%	1,056	34.38%
35-44	1,013	18.42%	42	23.20%	439	19.54%	532	17.32%
45-54	632	11.49%	33	18.23%	243	10.81%	356	11.59%
55-64	445	8.09%	13	7.18%	191	8.50%	241	7.85%
65-74	168	3.05%	5	2.76%	74	3.29%	89	2.90%
75 & Older	52	0.95%	2	1.10%	28	1.25%	22	0.72%
Unknown	47	0.85%	0	0.00%	12	0.53%	35	1.14%
TOTAL	5,500	100.00%	181	100.00%	2,247	100.00%	3,072	100.00%

**Table 6 – 10
When Alcohol Related Crashes Occurred in 2021**

Time of Day	Total	Weekday	Weekend*
Daytime**	1,548	940	608
Nighttime	4,072	1,632	2,440
Total	5,620	2,572	3,048
*Weekend begins at 6:00 p.m. on Friday and continues until 6:00 a.m. Monday. All other times and days are considered Weekdays.			
**Daytime refers to the hours between 6:00 a.m. and 6:00 p.m.			

**Table 6 – 11
Safety Device Usage for Drinking Drivers**

Severity of Injury	Safety Device Not Used	Lap Belt	Lap & Shoulder Belt	Protective Helmet	Other	Unknown	Totals
No Injury	151	33	2,344	5	2	1,016	3,551
Unknown Injury	4	1	58	0	0	145	208
Possible Injury	82	11	308	7	0	145	553
Suspected Minor Injury	163	4	451	9	2	189	818
Suspected Serious Injury	103	3	81	11	0	67	265
Fatal Injury	54	0	18	8	0	25	105
TOTALS	557	52	3,260	40	4	1,587	5,500

Section 6: – Alcohol Related Crashes

Table 6 – 12

Persons Killed and Injured in Alcohol Related Crashes

Age of Victim	Persons Killed			Persons Injured			
	Total	Male	Female	Total	Male	Female	Gender Unknown
0-4	1	0	1	49	20	29	0
5-9	3	2	1	58	29	29	0
10-14	1	1	0	52	29	23	0
15-19	13	9	4	278	146	132	0
20-24	32	24	8	546	340	206	0
25-34	55	35	20	994	638	356	0
35-44	45	28	17	592	351	241	0
45-54	44	36	8	440	279	161	0
55-64	29	22	7	350	230	120	0
65-74	14	8	6	144	90	54	0
75 & Older	3	2	1	59	35	24	0
Unknown	3	3	0	47	28	16	3
TOTAL	243	170	73	3,609	2,215	1,391	3

Table 6 – 13

Alcohol Related Crashes by County

County	Number of Crashes				Number of Persons	
	Total	Fatal	Injury	PDO	Killed	Injured
Apache	34	5	19	10	6	27
Cochise	43	5	20	18	8	34
Coconino	209	6	95	108	6	144
Gila	73	6	37	30	8	52
Graham	25	4	14	7	4	22
Greenlee	3	0	0	3	0	0
La Paz	23	3	10	10	3	19
Maricopa	3,569	104	1,431	2,034	119	2,199
Mohave	236	8	122	106	11	195
Navajo	91	6	38	47	6	48
Pima	704	47	282	375	49	458
Pinal	233	8	106	119	9	157
Santa Cruz	20	3	1	16	3	4
Yavapai	217	7	110	100	8	159
Yuma	140	3	66	71	3	91
TOTAL	5,620	215	2,351	3,054	243	3,609

Section 6: – Alcohol Related Crashes

Chart 6 – 1

All Alcohol Related Crashes vs. Fatal Alcohol Related Crashes by Day of Week

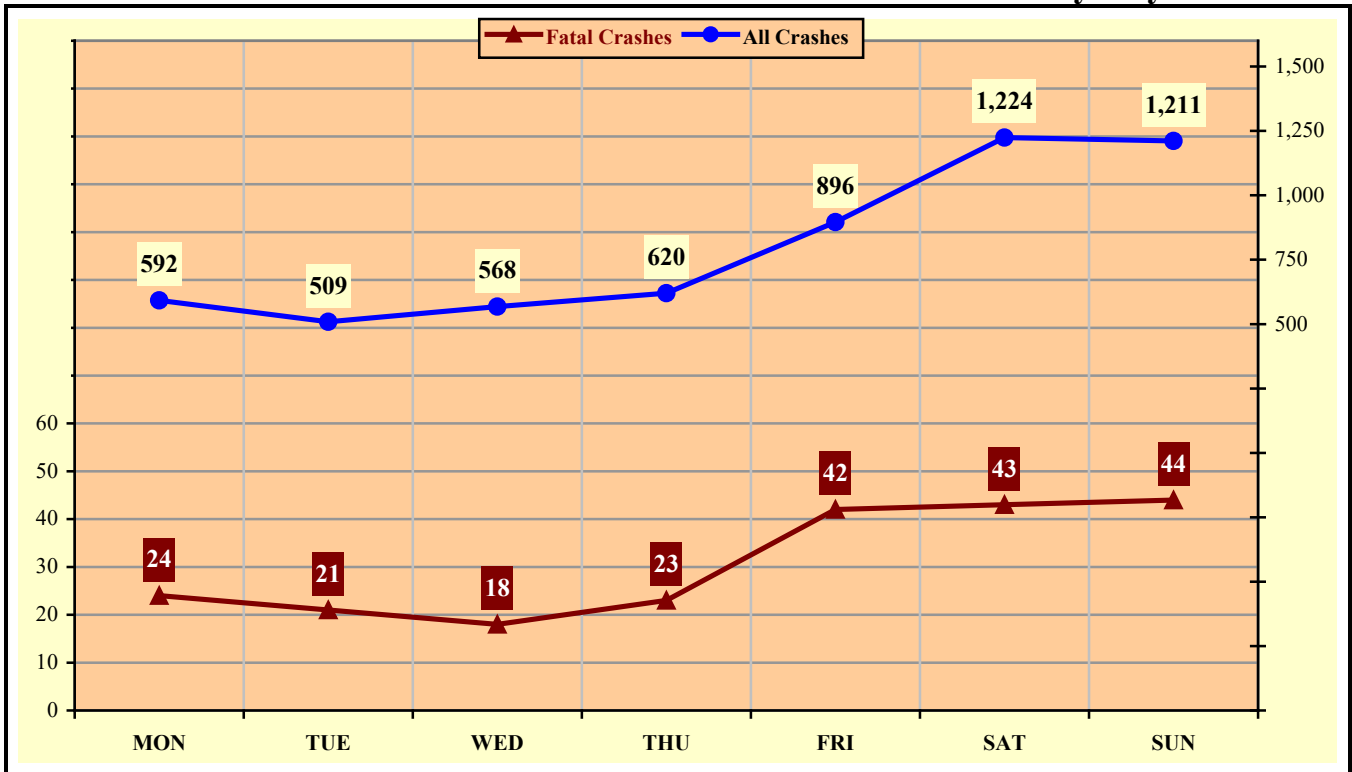
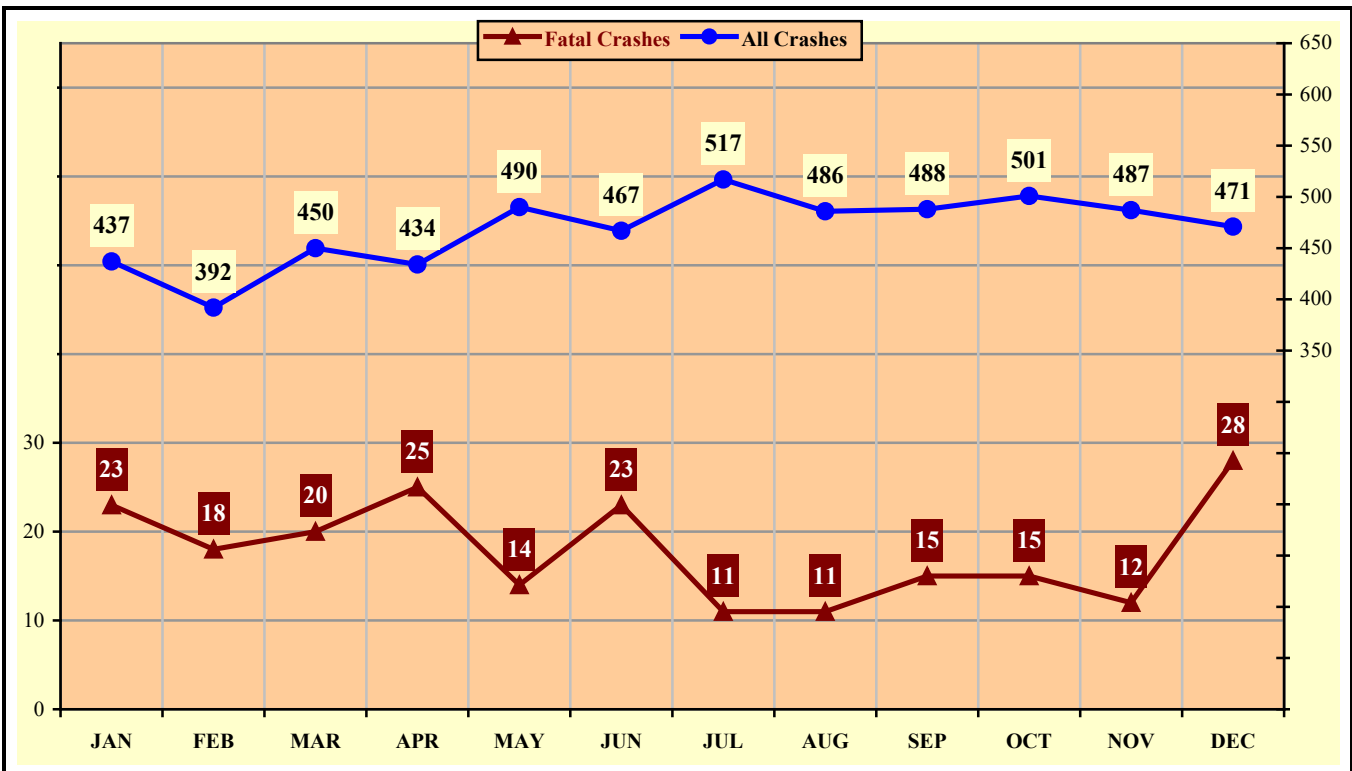


Chart 6 – 2

All Alcohol Related Crashes vs. Fatal Alcohol Related Crashes by Month



Section 6: – Alcohol Related Crashes

Chart 6 – 3

All Alcohol Related Crashes vs. Fatal Alcohol Related Crashes - Weekdays

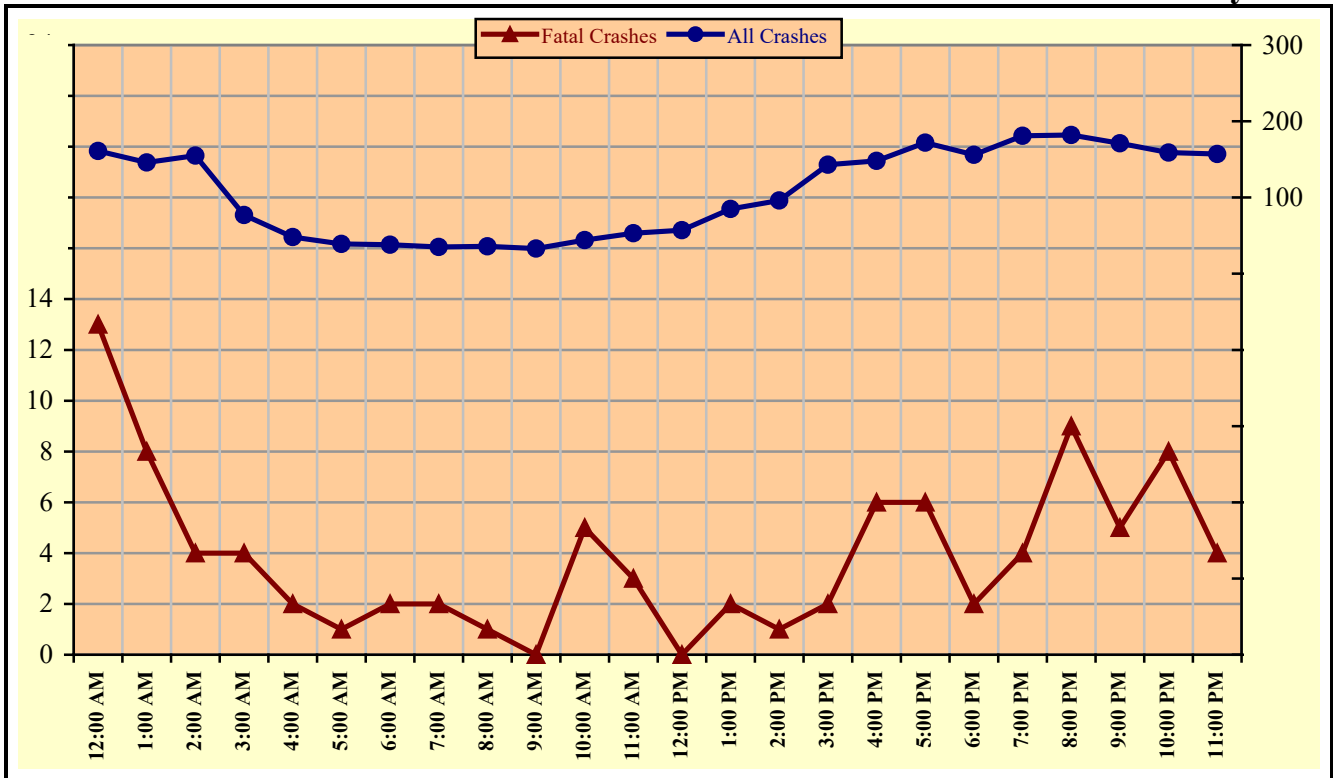
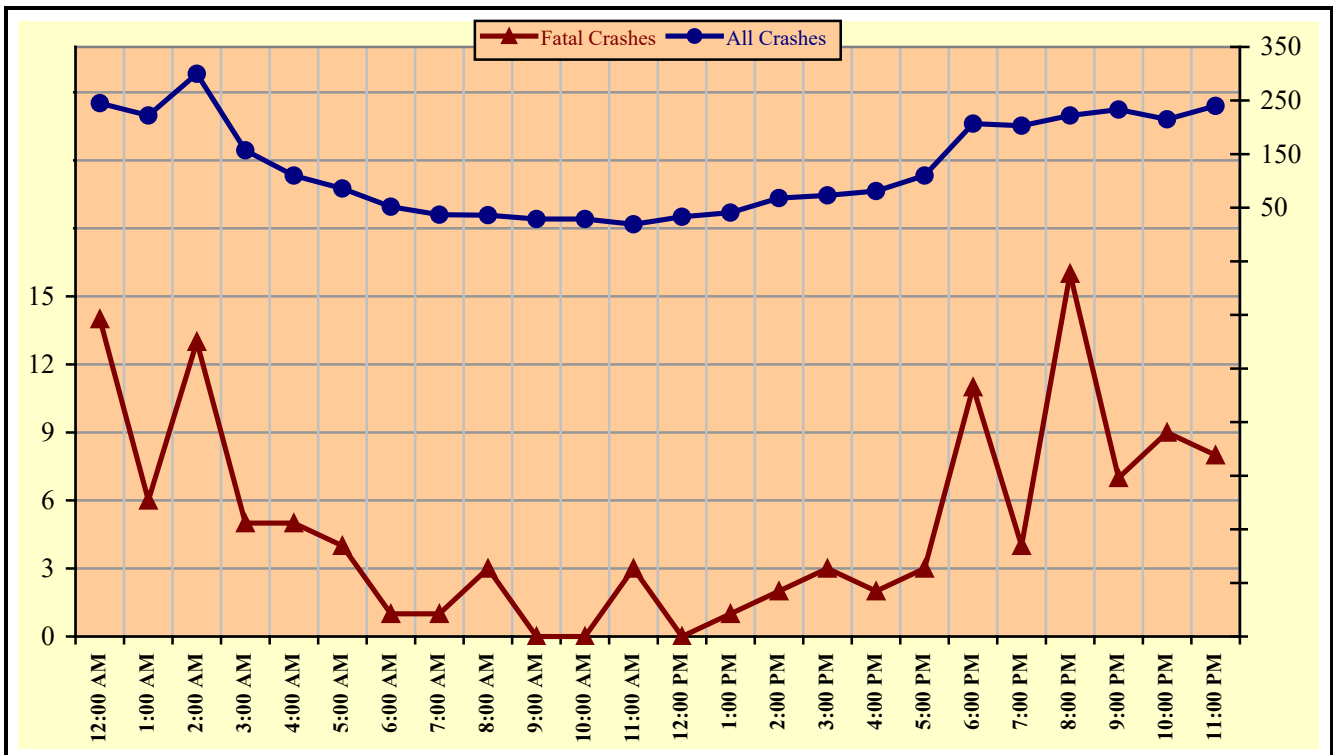


Chart 6 – 4

All Alcohol Related Crashes vs. Fatal Alcohol Related Crashes - Weekends



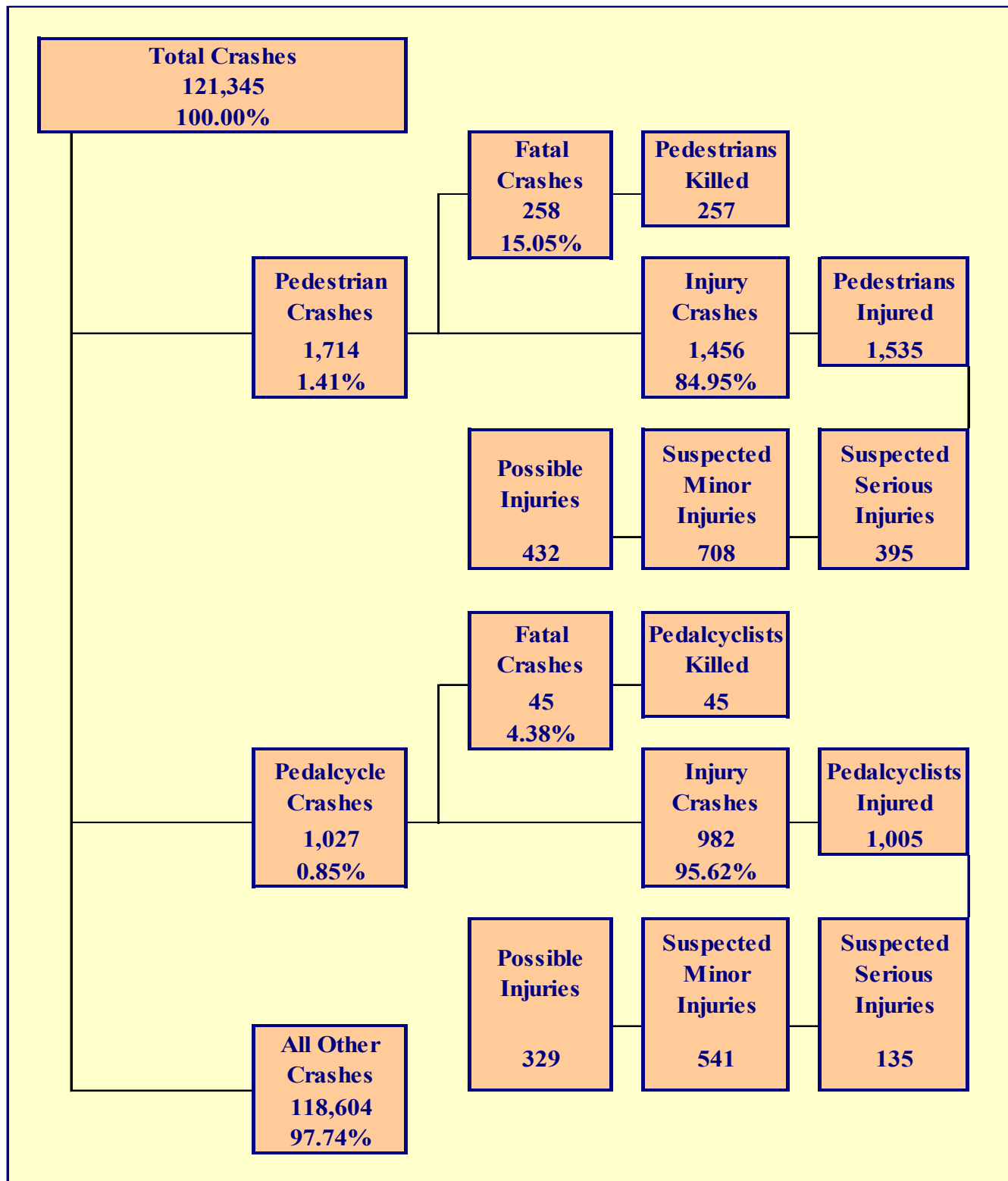
Section 6: – Alcohol Related Crashes

Table 6 – 14

Alcohol Related Crashes by Hour and Day of Week

Hour Beginning	Total Crashes		Monday		Tuesday		Wednesday		Thursday		Friday		Saturday		Sunday		Weekdays		Weekends	
	All	Fatal	All	Fatal	All	Fatal	All	Fatal	All	Fatal	All	Fatal	All	Fatal	All	Fatal	All	Fatal	All	Fatal
12:00 AM	406	27	51	3	37	4	33	2	35	2	56	5	77	2	117	9	161	13	245	14
1:00 AM	368	14	31	1	22	2	33	2	40	3	51	1	93	2	98	3	146	8	222	6
2:00 AM	455	17	41	4	21	0	34	1	45	1	55	2	139	4	120	5	155	4	300	13
3:00 AM	234	9	23	0	20	1	19	1	15	1	23	1	64	3	70	2	77	4	157	5
4:00 AM	158	7	18	3	7	0	11	0	10	1	20	1	49	2	43	0	48	2	110	5
5:00 AM	125	5	15	0	6	0	9	0	6	0	18	1	21	3	50	1	39	1	86	4
6:00 AM	90	3	6	0	5	1	7	0	8	0	12	1	15	0	37	1	38	2	52	1
7:00 AM	72	3	8	0	7	1	6	0	7	0	7	1	13	1	24	0	35	2	37	1
8:00 AM	72	4	5	0	8	0	6	0	7	0	10	1	17	0	19	3	36	1	36	3
9:00 AM	62	0	7	0	5	0	7	0	7	0	7	0	14	0	15	0	33	0	29	0
10:00 AM	73	5	11	3	8	1	8	0	9	1	8	0	11	0	18	0	44	5	29	0
11:00 AM	72	6	8	0	13	1	10	1	9	0	13	1	7	1	12	2	53	3	19	3
12:00 PM	90	0	12	0	11	0	12	0	7	0	15	0	20	0	13	0	57	0	33	0
1:00 PM	126	3	18	2	7	0	22	0	14	0	24	0	16	1	25	0	85	2	41	1
2:00 PM	164	3	13	0	15	0	20	0	17	1	31	0	38	1	30	1	96	1	68	2
3:00 PM	216	5	44	1	18	0	21	1	28	0	32	0	29	2	44	1	143	2	73	3
4:00 PM	229	8	24	1	30	0	34	1	25	3	35	1	36	1	45	1	148	6	81	2
5:00 PM	282	9	40	0	29	1	33	1	25	1	45	3	60	1	50	2	172	6	110	3
6:00 PM	363	13	44	0	29	0	41	0	42	2	60	3	90	7	57	1	156	2	207	11
7:00 PM	384	8	31	0	51	1	40	0	59	3	71	2	68	2	64	0	181	4	203	4
8:00 PM	404	25	38	3	47	3	51	2	46	1	64	6	72	5	86	5	182	9	222	16
9:00 PM	404	12	34	0	40	2	44	2	53	1	66	3	98	1	69	3	171	5	233	7
10:00 PM	374	17	33	2	39	2	35	2	52	2	76	5	87	2	52	2	159	8	215	9
11:00 PM	397	12	37	1	34	1	32	2	54	0	97	4	90	2	53	2	157	4	240	8
TOTAL	5,620	215	592	24	509	21	568	18	620	23	896	42	1,224	43	1,211	44	2,572	94	3,048	121

Crashes during Weekends accounted for 54.23% of all Alcohol Related crashes and 56.28% of Alcohol Related Fatal Crashes.



Section 7: – Pedestrian and Pedalcyclist Crashes

Table 7 – 1

Pedestrians Killed and Injured By Age and Gender

Age Group	Pedestrians Killed			Pedestrians Injured		
	Total	Male	Female	Total	Male	Female
0-4	1	1	0	20	11	9
5-9	1	0	1	30	20	10
10-14	3	2	1	71	47	24
15-19	7	6	1	150	95	55
20-24	15	11	4	152	82	70
25-34	54	41	13	280	197	83
35-44	54	37	17	241	153	88
45-54	37	24	13	207	135	72
55-64	39	27	12	201	123	78
65-74	26	18	8	104	62	42
75 & Older	10	6	4	38	24	14
Unknown	10	7	3	41	31	10
TOTAL	257	180	77	1,535	980	555

Table 7 – 2

Pedestrian Crashes by Geographic Location

Category	Total	Urban	Percent of Total	Rural	Percent of Total
Total Crashes	1,714	1,595	93.06%	119	6.94%
Fatal Crashes	258	219	84.88%	39	15.12%
Injury Crashes	1,456	1,376	94.51%	80	5.49%
Pedestrians Killed	257	218	84.82%	39	15.18%
Pedestrians Injured	1,535	1,449	94.40%	86	5.60%

Table 7 – 3

Pedestrian Crash History

Year	Pedestrian Crashes	Percent of all Crashes	Pedestrians Killed	Percent of all Fatalities	Pedestrians Injured	Percent of all Injuries
2017	1,733	1.36%	226	22.65%	1,547	2.77%
2018	1,787	1.40%	245	24.23%	1,561	2.91%
2019	1,864	1.42%	218	22.24%	1,723	3.17%
2020	1,530	1.54%	235	22.30%	1,358	3.27%
2021	1,714	1.41%	257	21.78%	1,535	2.97%

Section 7: – Pedestrian and Pedalcyclist Crashes

Table 7 – 4
Pedestrians Killed by Age and Action

Pedestrian Action	Total	Age Group of Pedestrian											
		0-4	5-9	10-14	15-19	20-24	25-34	35-44	45-54	55-64	65-74	75 & Older	Unknown
Crossing Road	143	0	0	1	2	6	29	31	24	21	18	7	4
Walking With Traffic	10	0	0	0	0	0	2	1	3	3	1	0	0
Walking Against Traffic	11	0	0	1	1	1	2	2	0	2	1	1	0
Standing	22	0	0	0	0	4	6	6	2	3	0	1	0
Lying	8	0	0	0	1	1	2	3	1	0	0	0	0
Getting on/off Vehicle	1	0	0	0	0	0	0	0	0	1	0	0	0
Other	11	1	1	1	1	0	1	2	2	1	1	0	0
Unknown	51	0	0	0	2	3	12	9	5	8	5	1	6
TOTAL	257	1	1	3	7	15	54	54	37	39	26	10	10

Table 7 – 5
Pedestrians Injured by Age and Action

Pedestrian Action	Total	Age Group of Pedestrian											
		0-4	5-9	10-14	15-19	20-24	25-34	35-44	45-54	55-64	65-74	75 & Older	Unknown
Crossing Road	980	13	20	53	91	108	159	152	138	130	72	23	21
Walking With Traffic	93	0	3	5	10	6	19	17	12	10	7	3	1
Walking Against Traffic	95	1	5	2	11	7	26	12	8	13	5	3	2
Standing	107	0	1	4	8	4	24	20	19	14	7	3	3
Lying	17	0	0	0	1	5	2	2	4	1	1	0	1
Getting on/off Vehicle	12	1	1	1	3	0	3	0	0	0	1	1	1
Working on Road	2	0	0	0	0	0	2	0	0	0	0	0	0
Other	153	3	0	5	18	14	32	23	17	24	8	5	4
Unknown	76	2	0	1	8	8	13	15	9	9	3	0	8
TOTAL	1,535	20	30	71	150	152	280	241	207	201	104	38	41

Table 7 – 6
Pedestrian Physical Condition in Motor Vehicle Crashes

Type of Condition	Number of Pedestrians					
	Total	Percent of Total	In Fatal Crashes	Percent of Fatal	In Injury Crashes	Percent of Injury
No Apparent Influence	1,086	60.60%	50	18.32%	1,036	68.20%
Alcohol	146	8.15%	42	15.38%	104	6.85%
Illegal Drugs	47	2.62%	29	10.62%	18	1.18%
Medications	2	0.11%	2	0.73%	0	0.00%
Marijuana	1	0.06%	1	0.37%	0	0.00%
Illness or Physical Impairment	7	0.39%	0	0.00%	7	0.46%
Fell Asleep or Fatigued	2	0.11%	0	0.00%	2	0.13%
Other	7	0.39%	1	0.37%	6	0.39%
Unknown	494	27.57%	148	54.21%	346	22.78%
TOTAL	1,792	100.00%	273	100.00%	1,519	100.00%

Section 7: – Pedestrian and Pedalcyclist Crashes

Table 7 – 7

Lighting Conditions in Pedestrian Crashes

Type of Lighting Conditions	Number of Crashes		
	Total	Fatal	Injury
Daylight	798	37	761
Dawn	22	8	14
Dusk	37	2	35
Dark - Lighted	675	132	543
Dark - Not Lighted	147	52	95
Dark - Unknown Lighting	5	2	3
Unknown	30	25	5
TOTAL	1,714	258	1,456

Table 7 – 8

Weather Conditions in Pedestrian Crashes

Type of Weather Conditions	Number of Crashes		
	Total	Fatal	Injury
Clear	1,506	189	1,317
Cloudy	100	13	87
Sleet/Hail	1	0	1
Rain	47	6	41
Snow or Blowing Snow	3	1	2
Severe Crosswinds	1	0	1
Blowing Sand, Soil, Dirt	0	0	0
Fog, Smog, Smoke	0	0	0
Other	1	0	1
Unknown	55	49	6
TOTAL	1,714	258	1,456

Table 7 – 9

Pedalcyclists Killed and Injured by Age and Gender

Age Group	Pedalcyclists Killed			Pedalcyclists Injured		
	Total	Male	Female	Total	Male	Female
0-4	0	0	0	2	2	0
5-9	0	0	0	19	14	5
10-14	0	0	0	91	75	16
15-19	2	2	0	102	75	27
20-24	2	1	1	84	58	26
25-34	5	4	1	167	132	35
35-44	9	6	3	132	96	36
45-54	6	5	1	117	92	25
55-64	13	11	2	142	119	23
65-74	5	5	0	99	88	11
75 & Older	3	2	1	26	22	4
Unknown	0	0	0	24	18	6
TOTAL	45	36	9	1,005	791	214

Section 7: – Pedestrian and Pedalcyclist Crashes

Table 7 – 10

Pedalcycle Crashes by Geographic Location

Category	Total	Urban	Percent of Total	Rural	Percent of Total
Total Crashes	1,027	946	92.11%	81	7.89%
Fatal Crashes	45	40	88.89%	5	11.11%
Injury Crashes	982	906	92.26%	76	7.74%
Pedalcyclists Killed	45	40	88.89%	5	11.11%
Pedalcyclists Injured	1,005	927	92.24%	78	7.76%

Table 7 – 11

Pedalcycle Crash History

Year	Pedalcycle Crashes	Percent of all Crashes	Pedalcyclists Killed	Percent of all Fatalities	Pedalcyclists Injured	Percent of all Injuries
2017	1,523	1.19%	32	3.21%	1,406	2.51%
2018	1,291	1.01%	24	2.37%	1,196	2.23%
2019	1,282	0.98%	30	3.06%	1,265	2.32%
2020	832	0.84%	32	3.04%	815	1.96%
2021	1,027	0.85%	45	3.81%	1,005	1.95%

Table 7 – 12

Lighting Conditions in Pedalcyclist Crashes

Type of Lighting Conditions	Number of Crashes		
	Total	Fatal	Injury
Daylight	739	21	718
Dawn	16	1	15
Dusk	44	3	41
Dark - Lighted	195	12	183
Dark - Not Lighted	29	6	23
Dark - Unknown Lighting	0	0	0
Unknown	4	2	2
TOTAL	1,027	45	982

Table 7 – 13

Weather Conditions in Pedalcyclist Crashes

Type of Weather Conditions	Number of Crashes		
	Total	Fatal	Injury
Clear	926	36	890
Cloudy	72	1	71
Sleet/Hail	1	0	1
Rain	12	0	12
Snow or Blowing Snow	0	0	0
Severe Crosswinds	0	0	0
Blowing Sand, Soil, Dirt	0	0	0
Fog, Smog, Smoke	0	0	0
Other	0	0	0
Unknown	16	8	8
TOTAL	1,027	45	982

Section 7: – Pedestrian and Pedalcyclist Crashes

Table 7 – 14
Pedestrian Crashes by County

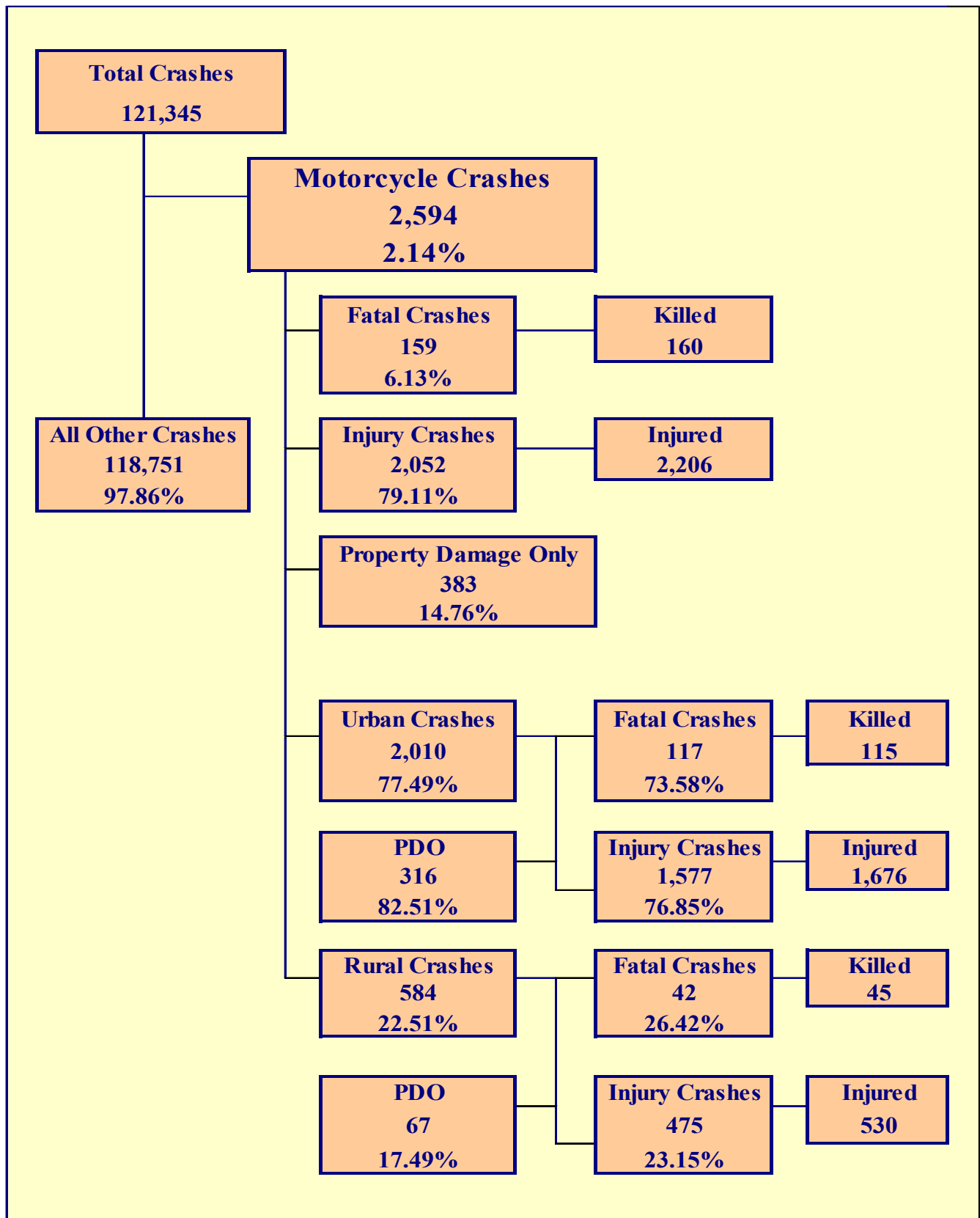
County	Number of Crashes			Number of Pedestrians	
	Total	Fatal	Injury	Killed	Injured
Apache	2	2	0	2	0
Cochise	9	3	6	3	6
Coconino	48	9	39	9	44
Gila	13	3	10	3	10
Graham	5	4	1	4	1
Greenlee	0	0	0	0	0
La Paz	2	1	1	1	1
Maricopa	1,237	164	1,073	162	1,133
Mohave	48	4	44	4	45
Navajo	14	5	9	5	9
Pima	243	46	197	47	206
Pinal	38	8	30	8	31
Santa Cruz	4	3	1	3	3
Yavapai	19	3	16	3	16
Yuma	32	3	29	3	30
TOTAL	1,714	258	1,456	257	1,535

Maricopa and Pima Counties accounted for 81.32% of pedestrian fatalities.

Table 7 – 15
Pedalcyclist Crashes by County

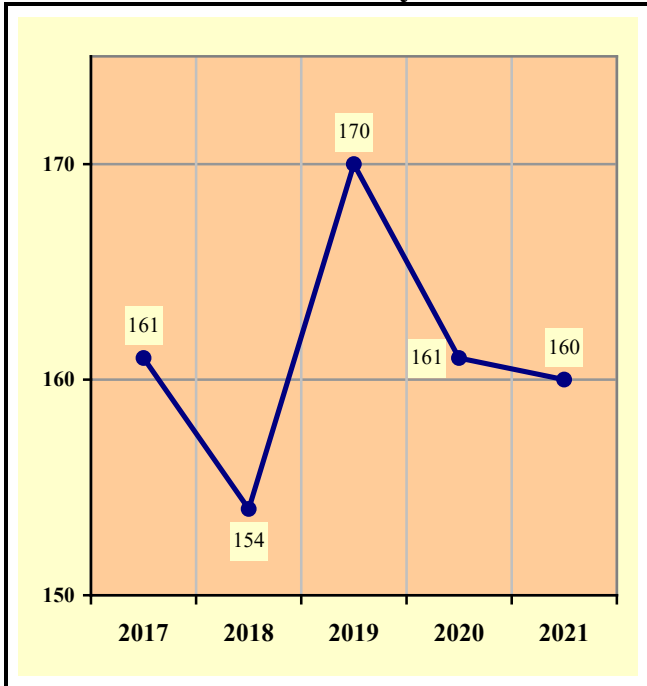
County	Number of Crashes			Number of Pedalcyclists	
	Total	Fatal	Injury	Killed	Injured
Apache	2	0	2	0	2
Cochise	10	1	9	1	9
Coconino	37	2	35	2	39
Gila	4	0	4	0	4
Graham	1	1	0	1	0
Greenlee	0	0	0	0	0
La Paz	1	0	1	0	1
Maricopa	702	26	676	26	681
Mohave	21	0	21	0	21
Navajo	6	1	5	1	13
Pima	137	7	130	7	133
Pinal	49	2	47	2	48
Santa Cruz	2	0	2	0	2
Yavapai	19	2	17	2	17
Yuma	36	3	33	3	35
TOTAL	1,027	45	982	45	1,005

Maricopa and Pima Counties accounted for 81.69% of pedalcyclist crashes.

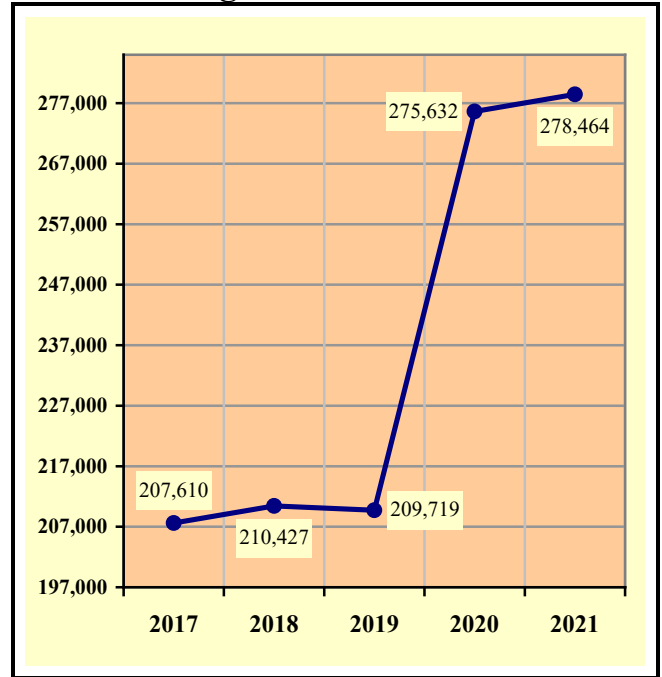


Section 8: – Motorcycle (MC) Crashes

**Chart 8 – 1
MC Fatalities by Year**

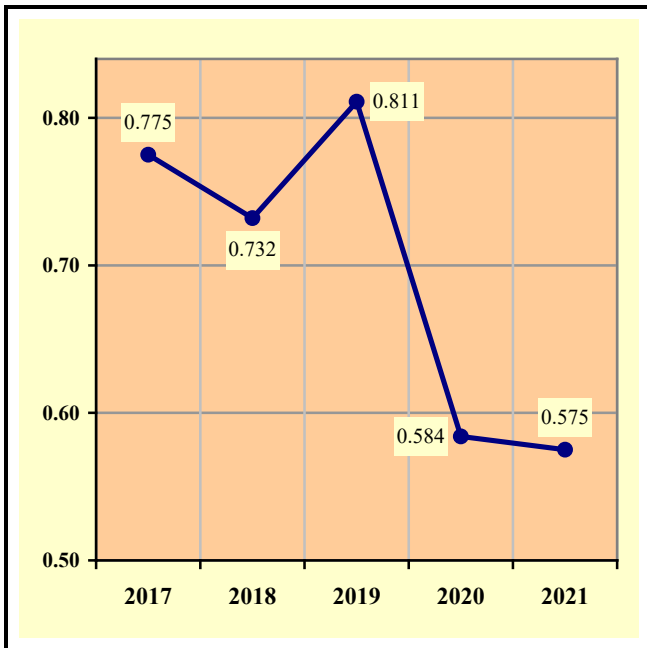


**Chart 8 – 2
MC Registrations in Arizona**

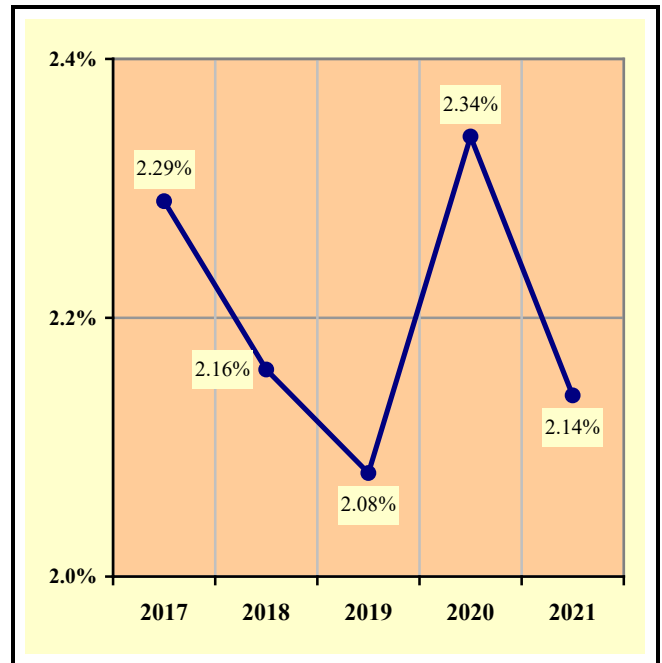


Total Point-in-Time of Registered Motorcycles at the end of
Calendar year 2021.
(Source: MVD - Currently Registered Vehicles by County Listing (motorcycle
sub category), reports dated 12/31/2021.)

**Chart 8 – 3
Fatality Rate per Registered MC**



**Chart 8 – 4
Percent of MC Crashes to All Crashes**



Section 8: – Motorcycle (MC) Crashes

Table 8 – 1
MC Crashes by First Harmful Event

First Harmful Event Type	Number of Crashes			
	Total	Fatal	Injury	PDO
Collision with Motor Vehicle in Transport	1,526	92	1,172	262
Overturning	425	19	375	31
Collision with Pedestrian	12	3	9	0
Collision with Pedalcyclist	5	2	3	0
Collision with Animal	23	1	20	2
Collision with Fixed Object	495	36	406	53
Collision with Non-fixed Object*	89	3	52	34
Vehicle Fire or Explosion	1	0	1	0
Other Non-collision**	2	1	1	0
Unknown	16	2	13	1
TOTAL	2,594	159	2,052	383
*Includes Collision with Parked Vehicles, Trains, Railway Vehicles, and Work Zone Equipment				
**Includes Vehicle Immersion, Jackknife, and Cargo Loss or Shift				

Table 8 – 2
Lighting Conditions in MC Crashes

Type of Lighting Conditions	Number of Crashes			
	Total	Fatal	Injury	PDO
Daylight	1,660	74	1,354	232
Dawn	35	2	27	6
Dusk	87	10	64	13
Dark - Lighted	615	45	468	102
Dark - Not Lighted	164	18	123	23
Dark - Unknown Lighting	11	1	7	3
Unknown	22	9	9	4
TOTAL	2,594	159	2,052	383

Table 8 – 3
Road Surface Conditions in MC Crashes

Type of Road Surface Condition	Number of Operators			
	Total	In Fatal Crashes	In Injury Crashes	In PDO Crashes
Dry	2,519	138	2,020	361
Wet	59	2	45	12
Snow/Slush	3	0	1	2
Ice/Frost	1	0	0	1
Water (standing or moving)	1	1	0	0
Mud, Dirt, Gravel, Sand	44	2	38	4
Other	6	0	4	2
Unknown	39	20	7	12
TOTAL	2,672	163	2,115	394

Section 8: – Motorcycle (MC) Crashes

Table 8 – 4

MC Crashes by Geographic Location

Category	Total	Urban	Percent of Total	Rural	Percent of Total
Total Crashes	2,594	2,010	77.49%	584	22.51%
Fatal Crashes	159	117	73.58%	42	26.42%
Injury Crashes	2,052	1,577	76.85%	475	23.15%
PDO Crashes	383	316	82.51%	67	17.49%
Persons Killed	160	115	71.88%	45	28.13%
Persons Injured	2,206	1,676	75.97%	530	24.03%

Table 8 – 5

Operator Involvement by Age in MC Crashes

Operator Age Group	Number of Operators							
	Total	Percent of Total	In Fatal Crashes	Percent of Fatal	In Injury Crashes	Percent of Injury	In PDO Crashes	Percent of PDO
15 & Under	21	0.79%	0	0.00%	20	0.95%	1	0.25%
16	12	0.45%	1	0.61%	7	0.33%	4	1.02%
17	22	0.82%	2	1.23%	17	0.80%	3	0.76%
18	34	1.27%	3	1.84%	26	1.23%	5	1.27%
19	53	1.98%	3	1.84%	42	1.99%	8	2.03%
20	59	2.21%	4	2.45%	47	2.22%	8	2.03%
21	71	2.66%	4	2.45%	57	2.70%	10	2.54%
22	74	2.77%	1	0.61%	67	3.17%	6	1.52%
23	80	2.99%	4	2.45%	63	2.98%	13	3.30%
24	67	2.51%	2	1.23%	60	2.84%	5	1.27%
25-34	644	24.10%	29	17.79%	541	25.58%	74	18.78%
35-44	431	16.13%	27	16.56%	360	17.02%	44	11.17%
45-54	399	14.93%	34	20.86%	310	14.66%	55	13.96%
55-64	389	14.56%	29	17.79%	310	14.66%	50	12.69%
65-74	164	6.14%	13	7.98%	135	6.38%	16	4.06%
75 & Older	43	1.61%	2	1.23%	33	1.56%	8	2.03%
Unknown	109	4.08%	5	3.07%	20	0.95%	84	21.32%
TOTAL	2,672	100.00%	163	100.00%	2,115	100.00%	394	100.00%

Table 8 – 6

MC Operator Physical Condition

Type of Condition	Number of Operators							
	Total	Percent of Total	In Fatal Crashes	Percent of Fatal	In Injury Crashes	Percent of Injury	In PDO Crashes	Percent of PDO
No Apparent Influence	2,149	80.43%	53	32.52%	1,799	85.06%	297	75.38%
Alcohol	125	4.68%	20	12.27%	95	4.49%	10	2.54%
Illegal Drugs	14	0.52%	8	4.91%	6	0.28%	0	0.00%
Medications	0	0.00%	0	0.00%	0	0.00%	0	0.00%
Marijuana	11	0.41%	10	6.13%	1	0.05%	0	0.00%
Illness or Physical Impairment	11	0.41%	1	0.61%	6	0.28%	4	1.02%
Fell Asleep or Fatigued	6	0.22%	0	0.00%	5	0.24%	1	0.25%
Other	8	0.30%	0	0.00%	6	0.28%	2	0.51%
Unknown	348	13.02%	71	43.56%	197	9.31%	80	20.30%
TOTAL	2,672	100.00%	163	100.00%	2,115	100.00%	394	100.00%

Section 8: – Motorcycle (MC) Crashes

Table 8 – 7

MC Operator’s Helmet Use

Severity of Injury	Helmet Used	Percent of Total	Helmet Not Used	Percent of Total	Unknown	Percent of Total	Total	Percent of Total
No Injury	167	12.83%	55	10.07%	177	21.48%	399	14.93%
Unknown Injury	11	0.84%	4	0.73%	44	5.34%	59	2.21%
Possible Injury	192	14.75%	67	12.27%	134	16.26%	393	14.71%
Suspected Minor Injury	578	44.39%	210	38.46%	293	35.56%	1,081	40.46%
Suspected Serious Injury	285	21.89%	144	26.37%	157	19.05%	586	21.93%
Fatal Injury	69	5.30%	66	12.09%	19	2.31%	154	5.76%
TOTALS	1,302	100.00%	546	100.00%	824	100.00%	2,672	100.00%

Table 8 – 8

MC Passenger’s Helmet Use

Severity of Injury	Helmet Used	Percent of Total	Helmet Not Used	Percent of Total	Unknown	Percent of Total	Total	Percent of Total
No Injury	13	15.66%	7	12.73%	13	26.00%	33	17.55%
Unknown Injury	1	1.20%	1	1.82%	1	2.00%	3	1.60%
Possible Injury	8	9.64%	9	16.36%	11	22.00%	28	14.89%
Suspected Minor Injury	39	46.99%	19	34.55%	18	36.00%	76	40.43%
Suspected Serious Injury	20	24.10%	16	29.09%	6	12.00%	42	22.34%
Fatal Injury	2	2.41%	3	5.45%	1	2.00%	6	3.19%
TOTALS	83	100.00%	55	100.00%	50	100.00%	188	100.00%

Table 8 – 9

Helmet Use by Gender

Gender	Number of Operators and Passengers							
	Helmet Used	Percent of Helmet Used	Helmet Not Used	Percent of Helmet Not Used	Helmet Use Unknown	Percent of Unknown	Total	Percent of Total
Male	1,224	88.38%	524	87.19%	709	81.12%	2,457	85.91%
Female	155	11.19%	76	12.65%	90	10.30%	321	11.22%
Unknown	6	0.43%	1	0.17%	75	8.58%	82	2.87%
TOTAL	1,385	100.00%	601	100.00%	874	100.00%	2,860	100.00%

Section 8: – Motorcycle (MC) Crashes

Table 8 – 10

MC Operators and Passengers Killed and Injured

Age of Victim	Persons Killed			Persons Injured			
	Total	Male	Female	Total	Male	Female	Gender Unknown
0-4	0	0	0	2	0	2	0
5-9	0	0	0	3	1	2	0
10-14	0	0	0	11	10	1	0
15-19	7	7	0	109	96	13	0
20-24	15	12	3	305	279	26	0
25-34	29	28	1	561	498	63	0
35-44	24	23	1	388	338	50	0
45-54	34	33	1	317	273	44	0
55-64	31	27	4	318	278	40	0
65-74	14	12	2	139	120	19	0
75 & Older	3	2	1	33	32	1	0
Unknown	3	3	0	20	11	5	4
TOTAL	160	147	13	2,206	1,936	266	4

Table 8 – 11

MC Operator Violations

Type of Violation or Behavior	Number of Operators							
	Total	Percent of Total	In Fatal Crashes	Percent of Fatal	In Injury Crashes	Percent of Injury	In PDO Crashes	Percent of PDO
No Improper Action	1,265	47.34%	41	25.15%	1,033	48.84%	191	48.48%
Speed too Fast for Conditions	553	20.70%	44	26.99%	445	21.04%	64	16.24%
Exceeded Lawful Speed	43	1.61%	8	4.91%	32	1.51%	3	0.76%
Failed to Yield Right-Of-Way	58	2.17%	2	1.23%	43	2.03%	13	3.30%
Followed Too Closely	78	2.92%	0	0.00%	63	2.98%	15	3.81%
Ran Stop Sign	15	0.56%	1	0.61%	10	0.47%	4	1.02%
Disregarded Traffic Signal	42	1.57%	3	1.84%	33	1.56%	6	1.52%
Made Improper Turn	16	0.60%	0	0.00%	12	0.57%	4	1.02%
Drove in Opposing Lane	3	0.11%	1	0.61%	2	0.09%	0	0.00%
Drove Left of Center Line	15	0.56%	1	0.61%	12	0.57%	2	0.51%
Passed in No-Passing Zone	11	0.41%	1	0.61%	8	0.38%	2	0.51%
Unsafe Lane Change	48	1.80%	2	1.23%	40	1.89%	6	1.52%
Failed to Keep in Proper Lane	95	3.56%	13	7.98%	71	3.36%	11	2.79%
Crossed Median	1	0.04%	0	0.00%	1	0.05%	0	0.00%
Aggressive Driving	16	0.60%	3	1.84%	12	0.57%	1	0.25%
Wrong Way Driving	3	0.11%	0	0.00%	3	0.14%	0	0.00%
Road Rage*	11	0.41%	0	0.00%	10	0.47%	1	0.25%
Other	85	3.18%	7	4.29%	71	3.36%	7	1.78%
Unknown	314	11.75%	36	22.09%	214	10.12%	64	16.24%
TOTAL	2,672	100.00%	163	100.00%	2,115	100.00%	394	100.00%

*Note: Road Rage data is incomplete due to some agencies using older versions of the crash report.

Section 8: – Motorcycle (MC) Crashes

Chart 8 – 5

All MC Crashes vs. Fatal MC Crashes by Time of Day - Weekdays

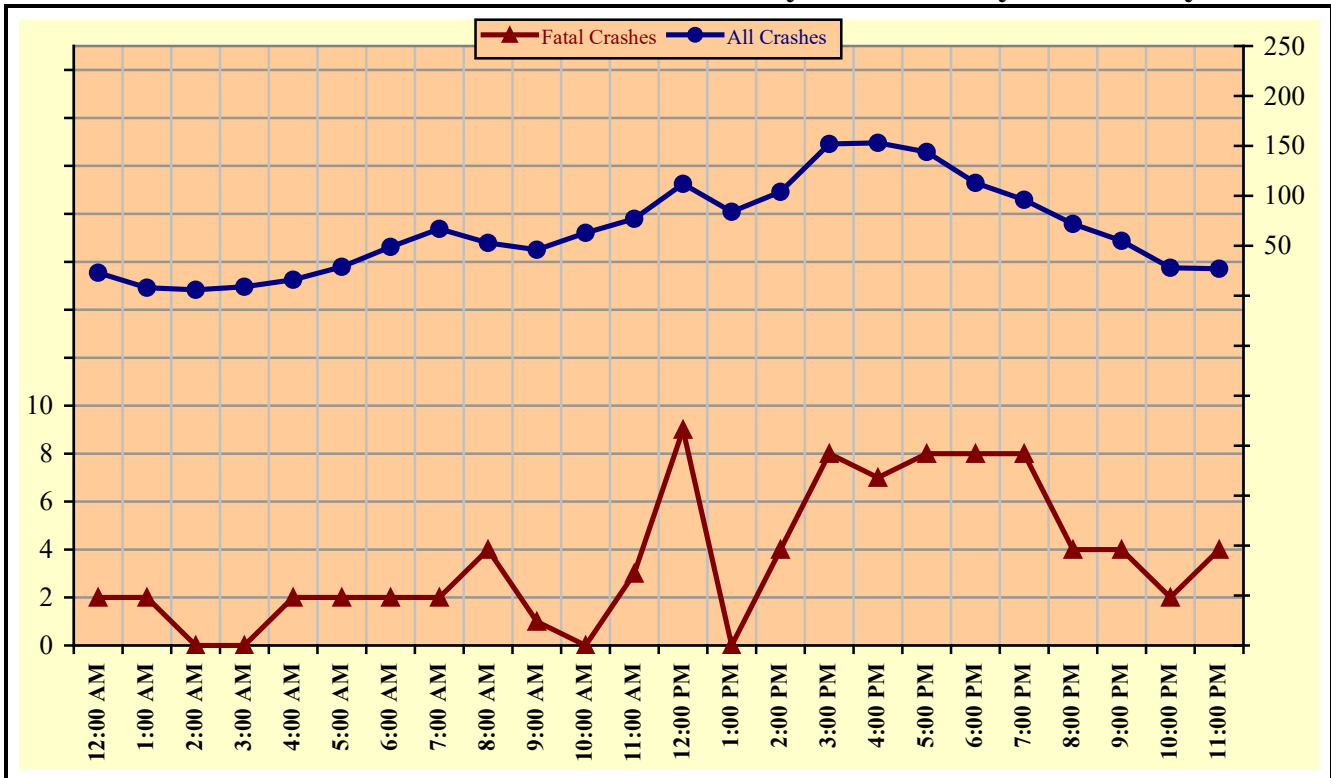
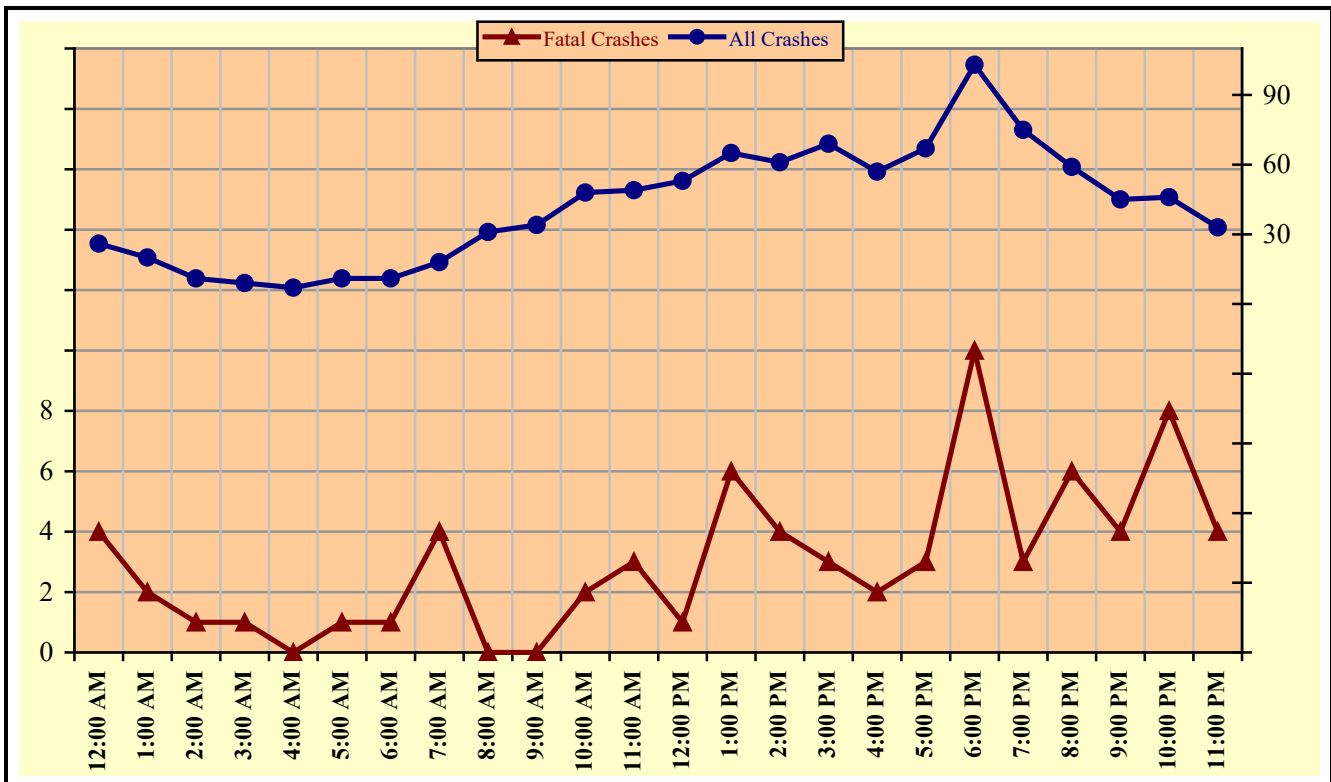


Chart 8 – 6

All MC Crashes vs. Fatal MC Crashes by Time of Day - Weekends



Section 8: – Motorcycle (MC) Crashes

Chart 8 – 7
All MC Crashes vs. Fatal MC Crashes by Day of Week

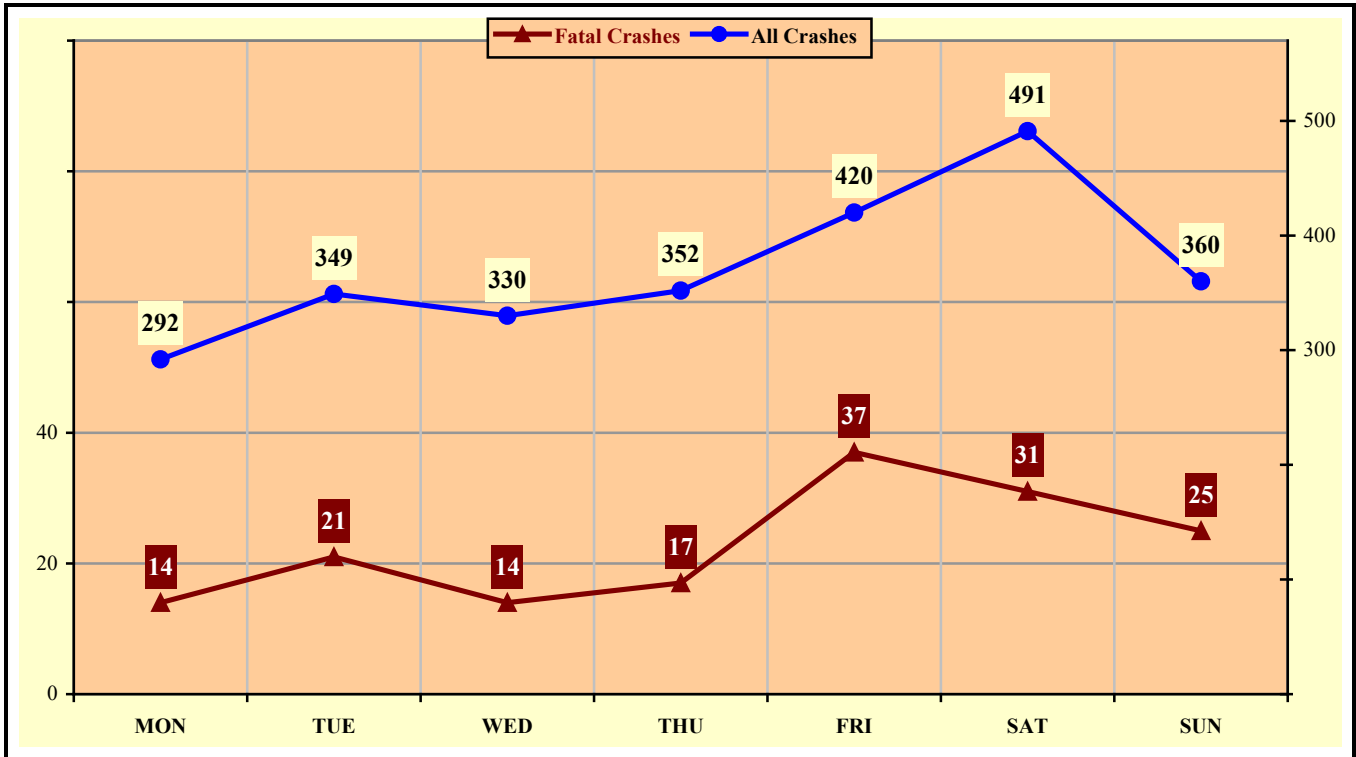
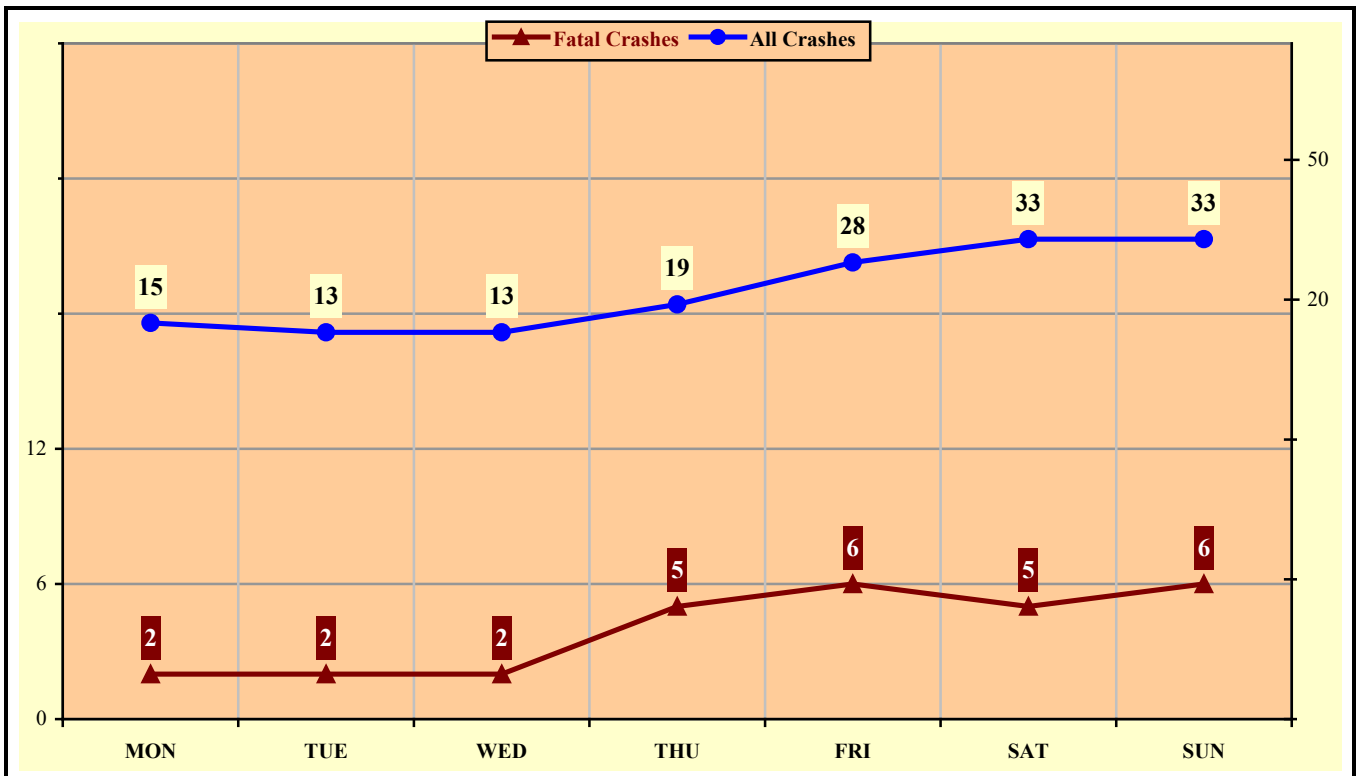


Chart 8 – 8
Alcohol Related MC Crashes vs. Fatal Alcohol Related MC Crashes by Day of Week



Section 8: – Motorcycle (MC) Crashes

Table 8 – 12
MC Crashes by Hour and Day of Week

Hour Beginning	Total Crashes		Monday		Tuesday		Wednesday		Thursday		Friday		Saturday		Sunday		Weekdays		Weekends	
	All	Fatal	All	Fatal	All	Fatal	All	Fatal	All	Fatal	All	Fatal	All	Fatal	All	Fatal	All	Fatal	All	Fatal
12:00 AM	49	6	5	1	3	0	8	0	4	0	8	2	5	1	16	2	23	2	26	4
1:00 AM	28	4	4	0	2	0	1	1	2	0	3	1	9	2	7	0	8	2	20	2
2:00 AM	17	1	4	1	4	0	0	0	1	0	1	0	5	0	2	0	6	0	11	1
3:00 AM	18	1	1	0	3	0	2	0	1	0	3	0	2	0	6	1	9	0	9	1
4:00 AM	23	2	2	0	3	0	3	1	5	0	5	1	3	0	2	0	16	2	7	0
5:00 AM	40	3	4	0	3	0	11	0	6	1	9	1	2	0	5	1	29	2	11	1
6:00 AM	60	3	11	0	10	0	8	0	10	0	10	2	7	1	4	0	49	2	11	1
7:00 AM	85	6	10	1	14	0	11	0	16	0	16	1	12	3	6	1	67	2	18	4
8:00 AM	84	4	11	0	10	2	14	0	10	1	8	1	14	0	17	0	53	4	31	0
9:00 AM	80	1	10	1	8	0	9	0	7	0	12	0	18	0	16	0	46	1	34	0
10:00 AM	111	2	13	0	8	0	11	0	16	0	15	0	22	1	26	1	63	0	48	2
11:00 AM	126	6	12	1	14	0	14	1	21	0	16	1	29	2	20	1	77	3	49	3
12:00 PM	165	10	16	3	29	2	11	1	28	1	28	2	33	1	20	0	112	9	53	1
1:00 PM	149	6	16	0	20	0	11	0	16	0	21	0	41	2	24	4	84	0	65	6
2:00 PM	165	8	24	1	27	2	16	0	11	0	26	1	34	3	27	1	104	4	61	4
3:00 PM	221	11	33	0	26	2	33	3	31	2	29	1	39	2	30	1	152	8	69	3
4:00 PM	210	9	19	0	31	0	29	0	32	3	42	4	35	2	22	0	153	7	57	2
5:00 PM	211	11	20	1	25	0	36	1	32	2	31	4	40	2	27	1	144	8	67	3
6:00 PM	216	18	15	0	39	7	36	1	23	0	43	5	38	1	22	4	113	8	103	10
7:00 PM	171	11	16	1	24	1	21	1	35	5	25	2	31	1	19	0	96	8	75	3
8:00 PM	131	10	18	1	16	0	21	2	17	1	18	2	22	1	19	3	72	4	59	6
9:00 PM	100	8	12	0	16	2	15	2	12	0	21	1	16	2	8	1	55	4	45	4
10:00 PM	74	10	8	1	4	1	6	0	10	0	19	4	19	2	8	2	28	2	46	8
11:00 PM	60	8	8	1	10	2	3	0	6	1	11	1	15	2	7	1	27	4	33	4
TOTAL	2,594	159	292	14	349	21	330	14	352	17	420	37	491	31	360	25	1,586	86	1,008	73

Crashes during Weekends accounted for 38.86% of all MC crashes and 45.91% of Fatal MC Crashes.

Section 8: – Motorcycle (MC) Crashes

Table 8 – 13

MC Crashes by County

County	Number of Crashes				Number of Persons	
	Total	Fatal	Injury	PDO	Killed	Injured
Apache	12	1	9	2	1	12
Cochise	38	2	33	3	5	35
Coconino	73	2	62	9	2	72
Gila	39	2	30	7	2	35
Graham	14	1	13	0	1	13
Greenlee	7	1	6	0	1	6
La Paz	10	1	9	0	1	9
Maricopa	1,576	96	1,235	245	95	1,307
Mohave	136	7	113	16	7	119
Navajo	22	1	18	3	1	21
Pima	336	18	262	56	17	289
Pinal	142	13	113	16	13	124
Santa Cruz	6	1	3	2	0	4
Yavapai	122	11	92	19	12	103
Yuma	61	2	54	5	2	57
TOTAL	2,594	159	2,052	383	160	2,206

Maricopa and Pima Counties accounted for 70% of MC fatalities.

Table 8 – 14

Manner of Collision in MC Crashes

Manner of Collision Type	Number of Crashes							
	Total	Percent of All Crashes	Fatal	Percent of Fatal Crashes	Injury	Percent of Injury Crashes	PDO	Percent of PDO Crashes
Angle	251	15.34%	21	20.39%	191	15.39%	39	13.36%
Left Turn	477	29.16%	42	40.78%	378	30.46%	57	19.52%
Rear End	458	28.00%	15	14.56%	342	27.56%	101	34.59%
Head-On	52	3.18%	2	1.94%	40	3.22%	10	3.42%
Sideswipe (same)	217	13.26%	5	4.85%	156	12.57%	56	19.18%
Sideswipe (opposite)	36	2.20%	1	0.97%	29	2.34%	6	2.05%
U-Turn	26	1.59%	4	3.88%	19	1.53%	3	1.03%
Other*	105	6.42%	12	11.65%	78	6.29%	15	5.14%
Unknown	14	0.86%	1	0.97%	8	0.64%	5	1.71%
TOTAL	1,636	100.00%	103	100.00%	1,241	100.00%	292	100.00%
Note: Includes only multi-vehicle MC crashes								
*Other includes pedestrian and pedalcyclist crashes								

Acknowledgements

Special gratitude to our other providers of data and information including:

The Information Technology Group, Arizona Department of Transportation

Motor Vehicle Division, Arizona Department of Transportation

Multimodal Planning Division, Arizona Department of Transportation

The Federal Highway Administration, U.S. Department of Transportation

National Highway Transportation Safety Administration