

## Business Engagement and Compliance

### ADOT Seeking Input on North-South Corridor Study

The **Arizona Department of Transportation**, in cooperation with **Pinal County**, is preparing to kick off the next phase of the **North-South Corridor** study segment south of US 60. This includes public meetings to be held in mid-September and the opportunity to provide comments through Sept. 27.

The **North-South Corridor Design Concept Report Tier 2 Environmental Study** from US 60 to Arizona Farms Road (Segment 1) will:

- Narrow the selected 1,500-foot corridor to a proposed 400-foot freeway alignment.
- Identify environmental considerations and mitigation efforts.
- Identify interchange locations and design concepts.
- Develop other design features.

These public meetings will provide an overview of the Tier 2 study process, seek input from the public on the NSCS Segment 1 and answer questions.

- **Virtual:** 6 to 7 p.m. Wednesday, Sept. 20 (access information is available at [northsouth-segment1.com](http://northsouth-segment1.com))

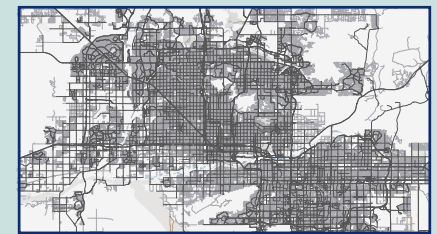
Information presented at each meeting will be the same. More details about the meeting, including the meeting materials and prerecorded presentation, are available on the study website at [northsouth-segment1.com](http://northsouth-segment1.com).

The public is invited to provide their comments on the study anytime until Sept. 27 by:

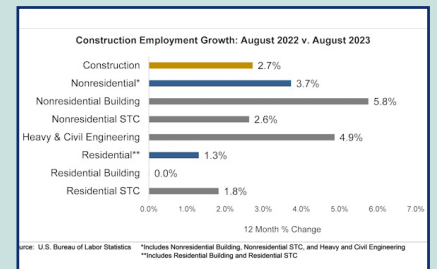
- Attending an in-person or virtual public meeting.
- Taking our survey or providing comments at [northsouth-segment1.com](http://northsouth-segment1.com).
- Emailing [info@northsouth-segment1.com](mailto:info@northsouth-segment1.com).
- Calling 602.474.3990.
- Mailing 20 E. Thomas Road, Ste. 2500 Phoenix, AZ 85012.



### Back to School



### MAG, Partners to Hold 2-Day Conference



### Construction Adds 22,000 Jobs in August

- ▶ EVENTS
- ▶ OPPORTUNITIES
- ▶ EXTERNAL LINKS

## NEWLY CERTIFIED DBE FIRMS:

Thompson Parking & Mobility Consultants, LLC

## ADOT Seeking Input on North-South Corridor Study (Cont'd)

1 ◀◀◀◀

The North-South Segment 1 study area spans approximately 20 miles and extends from the town of Florence in the south to Apache Junction in the north. The study team will further evaluate Segment 1 to identify a preferred North-South alternative, which would include the alignment, interchange locations and other design features and evaluate associated environmental impacts and mitigation.

The full North-South Corridor is a proposed 55-mile future transportation route in Pinal County that would stretch from U.S. 60 in Apache Junction to Interstate 10 in Eloy and pass through the town of Queen Creek, city of Coolidge, town of Florence and portions of unincorporated Pinal County. The North-South corridor is also proposed to connect with the future extension of State Route 24.

There currently is no funding committed or timeline established to build any portion of the North-South Corridor.

The current study will build upon the purpose and need identified in the [Tier 1 North-South Corridor Study](#):

- Improve access to future activity centers.
- Improve regional mobility.
- Improve north-to-south connectivity.
- Integrate the region's transportation network.
- Address existing and future population and employment growth.
- Provide an alternative to avoid congestion on I-10. ([Source](#))

## Back to School Time

### 3 "Show and Tell" Ideas to Increase Your Value as a Small Business

Many design and construction projects have small/minority/disadvantaged/veteran business requirements. Even so, many prime designers and contractors may seem like they are looking for just a box to check or a requirement to fulfill. When prime firms do not value what your firm provides — beyond requirements — it is time for you to look differently at how you are explaining the value that your firm provides.

Let us take a lesson from kindergartners. It is time for Show and Tell. Here are three advantages that small firms can provide, Show and Tell style.

#### Cost Efficiency

- **Show:** Provide alternatives that include "good, better and best" options for services and products. Think creatively and provide innovative solutions that they may not have considered to give you a cost advantage.
- **Tell:** Small businesses often have lower overhead costs and can offer competitive pricing, which means reduced project costs. Today's price-sensitive environment means that prime firms are looking closer to improve budgets and cost performance. Because of your size, you can offer more creativity and flexibility in negotiating pricing solutions.

#### Specialized Expertise and Personalized Service

- **Show:** In addition to a general description of service, include detailed capabilities, including certifications, proprietary methods, custom software, academic publications and industry awards for innovation. Also, provide client testimonials that show your responsiveness and ability to tailor solutions to specific problems.
- **Tell:** Your business may be built on a specialized niche or a deep focus on a particular aspect of design or construction. As such, you may provide extra value for complex or extremely detailed project requirements. Also make sure you stay in close touch with your clients, quickly follow-up on action items and provide unsolicited suggestions based on your expertise. Tell your clients you are small AND mighty.

#### Agility and Innovation

- **Show:** Track and provide specific examples of how you bring fresh perspectives and innovative approaches to projects that have resulted in creative solutions and improved outcomes.
- **Tell:** Small businesses are often more agile and adaptable than larger corporations. You can more quickly respond to changes in project scope, unforeseen challenges, or evolving industry trends, which can result in faster decision-making and problem-solving to keep projects on track and within budget.

Attend events that put you in front of prime design and construction firms so you can "show and tell" the value you bring to projects. Be prepared to prove that your cost efficiency, specialized expertise, personalized service, agility and innovation will improve project outcomes. Explain that these advantages can be particularly appealing when their projects demand a tailored approach, cost-effective solutions, or the integration of unique skills and perspectives.

Perhaps Russian novelist Anton Chekhov said it best: *"Don't tell me the moon is shining; show me the glint of light on broken glass."*

## MAG, Partners to Hold 2-Day Conference

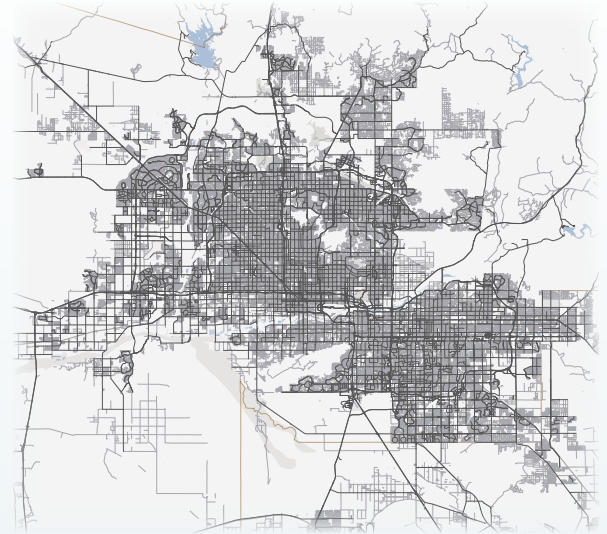
The **Maricopa Association of Governments** and **Age Friendly Arizona**, in partnership with the **National Aging and Disability Transportation Center** and **Easter Seals**, will hold a two-day conference on transportation in October.

The event is intended to spark conversation about creative transportation solutions for older adults and the disabled. Attendees will discuss health and human services plans, how plans can integrate transportation, examine current resources and consider potential future resource coordination.

The event will start at noon Oct. 23 and continue at 10 a.m. Oct. 24 at MAG's office at 302 N. First Ave., Ste. 300 in Phoenix.

Attendance is in person or virtual, but in-person spaces are limited to the first 75 registrants. Registration is available for the Oct. 23 meeting [here](#), and for the Oct. 24 meeting [here](#).

People wanting more information can email Kelli Donley Williams [here](#). ([Source](#))



## Construction Adds 22,000 Jobs in August Nationwide

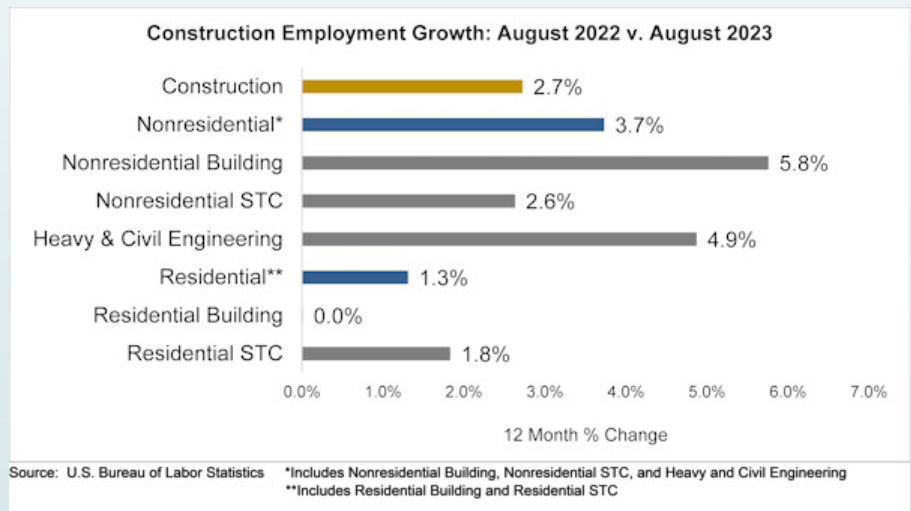
The construction industry added 22,000 jobs on net in August, according to an **Associated Builders and Contractors** analysis of data released by the **U.S. Bureau of Labor Statistics**. On a year-over-year basis, industry employment has increased by 212,000 jobs, or 2.7%.

The lion's share of job creation was among nonresidential contractors. Nonresidential construction employment increased by 21,000 positions on net, with growth registered in all three major subcategories. Nonresidential specialty trade added 12,100 positions, while heavy and civil engineering and nonresidential building added 7,100 and 1,800 jobs, respectively.

The construction unemployment rate remained unchanged at 3.9% in August. Unemployment across all industries expanded from 3.5% in July to 3.8% last month.

"This is the era of the megaproject," said **ABC** Chief Economist Anirban Basu. "While many private developers are encountering harsher lending markets and suffering greater difficulty financing projects, the transformation of American manufacturing, combined with accelerating infrastructure spending, has dramatically increased demand for construction workers. Many of these projects exceed \$1 billion. This is especially true in certain parts of the nation, including Ohio, Texas and Arizona.

"Given the outsized role of megaprojects in the current economic environment, it is conceivable that the construction industry will face recessionary conditions in certain areas of the country sometime during the next two years, even as activity surges in others," said Basu. "This suggests that many construction workers may decide to relocate as the disparity in industry performance widens both geographically and among various industry segments." ([Source](#))



### Business Engagement and Compliance

- ADOT/BECO
- Other Associations

**\*\*ATTENTION TO ALL FIRMS\*\***

Need help preparing DBE affidavits?  
Please see our tutorial video below:

["Preparing DBE Affidavits"](#)



## SEPTEMBER

- 20** **MPA: Lunch and Learn - Water Resiliency in the desert; how Southern Arizona is growing smarter**  
11 a.m. - 1 p.m.  
Location: Culinary Dropout  
2543 E. Grant Road, Tucson
- 20** **APWA: September Meeting Panel Discussion: Community Sustainability and APWA Resources**  
11:30 a.m. - 1 p.m.  
Location: Phoenix Country Club  
2901 N. Seventh St., Phoenix
- 21** **AIA: AIA10+FAIA+Allied Conversation Series: When Things Go Wrong**  
Noon - 1 p.m.  
Location: Virtual
- 21** **ASA AZ: Construction Appreciation Networking Mixer**  
4:30 - 7 p.m.  
Location: Mortenson  
433 S. Farmer Ave., Ste. 101 Tempe
- 21** **SMPS: 2023 - 2024 Leadership Team Introduction And Happy Hour**  
3 - 5 p.m.  
Location: BARCOA  
829 N. First Ave., Phoenix
- 21** **AZ WATER: Water, WIFA, and What's Next - Southern Arizona Technical Luncheon and Webinar**  
11:30 a.m.  
Location: Water Campus  
2995 W. Calle Agua Nueva, Tucson
- 22** **Valley Partnership September Friday Morning Breakfast**  
7:30 - 9 a.m.  
Location: Phoenix Country Club  
2901 N. Seventh St., Phoenix
- 28** **AAED: Economic Development Made Easy**  
9 a.m. - 1:30 p.m.  
Location: SPR Pera Club  
1 E. Continental Dr., Tempe



Featured Federal-Aid Projects

CURRENT OPEN SOLICITATIONS

Due Date	Project Valuation	DBE Goal	Solicitation / Project Number	Type	Project Owner and Description	Contact
9/22/23 11:00 a.m. MST	\$5.1 million	10.86%	GLN-0(265)T; T031801C	<a href="#">IFB</a>	ADOT - <b>Bike Lane Improvements, 67th Avenue from Missouri Avenue to Cholla Street, Glendale.</b> The work consists of the installation of bicycle facilities including signing and striping improvements; curb, gutter, median, and sidewalk modifications, signal modifications and other related work.	Iqbal Hossain, Group Manager of Contracts and Specifications, at <a href="mailto:ihossain@azdot.gov">ihossain@azdot.gov</a> .
9/22/23 11:00 a.m. MST	\$8.9 million	13.14%	FLO-0(201)T; SZ04101C	<a href="#">IFB</a>	ADOT - <b>Construct Roundabouts, SR 287 and SR 79B, Florence.</b> The work consists of adding a new multi-lane roundabout at SR 287 and SR 79B and a single-lane roundabout at SR 79B and Florence Heights Dr.	Iqbal Hossain, Group Manager of Contracts and Specifications, at <a href="mailto:ihossain@azdot.gov">ihossain@azdot.gov</a> .
10/20/23 11:00 a.m. MST	\$1.71 million	6.22%	GLB-0(209)T; T028101C	<a href="#">IFB</a>	ADOT - <b>System Preservation and Bridge Replacement, Pinal Creek Bridge, Globe.</b> The work consists of replacing the existing five-span, reinforced concrete slab bridge with a four-span cast-in-place reinforced concrete closed frame structure.	Iqbal Hossain, Group Manager of Contracts and Specifications, at <a href="mailto:ihossain@azdot.gov">ihossain@azdot.gov</a> .
10/20/23 11:00 a.m. MST	\$1.12 million	9.58%	MMO-0(223)T; T027201C	<a href="#">IFB</a>	ADOT - <b>Northern Avenue from Stockton Hill Road to Castle Rock Road, Mohave County REBID.</b> The work consists of concrete sidewalks and driveways, replacing pavement markings, installing a new traffic signal video detection camera, and other related work.	Iqbal Hossain, Group Manager of Contracts and Specifications, at <a href="mailto:ihossain@azdot.gov">ihossain@azdot.gov</a> .
11/17/23 11:00 a.m. MST	\$12.1 million	3.62%	085-A(207)T; F050701C	<a href="#">IFB</a>	ADOT - <b>Pavement Preservation, Gila Bend to Range Road on Lukeville Highway ( SR 85).</b> The work consists of milling the existing chip seal course and replacing it with a hot applied chip seal coat and micro-surfacing.	Iqbal Hossain, Group Manager of Contracts and Specifications, at <a href="mailto:ihossain@azdot.gov">ihossain@azdot.gov</a> .

External Links:

- [ADOT Current Advertisements](#)
- [ADOT Engineering Advertisements](#)
- [ADOT Public-Private Partnership Initiatives](#)
- [ADOT Advertised Alternative Delivery Projects](#)
- [Bidding Opportunities Around the State](#)

DBE SUPPORTIVE SERVICES PROGRAM

1801 W. Jefferson St., Ste. 101, Phoenix AZ  
602.712.7761  
[DBESupportiveServices@azdot.gov](mailto:DBESupportiveServices@azdot.gov)

# I-17, ANTHEM WAY TI TO JCT. SR 69 (CORDES JUNCTION)



## PROJECT OWNER

Arizona Department of Transportation

## PROJECT NAME

I-17, Anthem Way TI to Jct. SR 69  
(Cordes Junction)

Phoenix – Cordes Junction Highway

Public-Private Partnership  
Design-Build-Operate-Maintain  
Agreement

## PROJECT NUMBER

17 MA 229 H6800 01C / NHPP-017-  
A(228)S

DBE participation goal  
established for this project:

**10.16%**  
for Professional Services

**10.88%**  
for Construction Work

## OUR TEAM

The Kiewit-Fann Joint Venture (KFJV) is a strategic partnership between two trusted Arizona firms that have extensive experience working in rural environments, delivering highway projects. KFJV team members have an extensive history together on successful design-build and CMAR projects and have long-standing relationships with ADOT, local jurisdictions, and the community.

## POTENTIAL SUBCONTRACT OPPORTUNITIES

KFJV is seeking diverse and local firms interested in pursuing multiple scopes of work on the I-17 Anthem Way project. The following scopes are open for solicitation:

- Buy PVC & CIP Wall Embeds
- De-lead Existing Bridge Bearings
- Handrail
- Bridge Deck Grooving
- Nursery Stock Trees
- Rock Bolt Walls
- Install Rock Anchors/Shotcrete
- Remove Ground Mounted Signs
- Routine Maintenance - Damaged Sign F&I
- Weld Bearing Replacements
- Slipform & CIP Concrete Barrier
- Flatwork

**Attachments:** Wage Decision No. AZ20210008 Mod No. 0 - Dated 01/01/2021

## TAKE THE FIRST STEPS

Head to <https://www.kiewit.com/business-with-us/opportunities/i-17-anthem-way-project/> to complete the Subcontractor Questionnaire and create an account with Building Connected, or for additional information and future event dates.

## QUESTIONS? CONTACT US!

Contact us to learn about anticipated subcontract opportunities on the I-17 Anthem Way project at [Flex.Outreach@kiewit.com](mailto:Flex.Outreach@kiewit.com).

KFJV is committed to meeting or exceeding stated project participation requirements upon award of ongoing and upcoming Arizona Department of Transportation projects; assisting interested DBEs in obtaining bonding, lines of credit or insurance; providing interested DBEs information related to the plans, specifications and requirements for work to be subcontracted or supplied by these DBEs; assisting interested DBEs in obtaining necessary equipment, supplies, materials or related assistance or services; sub-dividing bid items into economically feasible work units to DBEs every advantage to quoting the project.

*KFJV is an Equal Opportunity Employer.*

2023 DBE & SMALL BUSINESS CONFERENCE

# ROAD WORK AHEAD

OCTOBER 3-4, 2023  
CASINO DEL SOL  
TUCSON, ARIZONA

IN  
PERSON!

## WANT MORE?

**EVEN MORE REASONS TO ATTEND THE CONFERENCE!**

- Face-to-Face Instead of Screen-to-Screen
- Celebrate Prime, Community, and DBE Award Winners
- Special Networking and Dinner Connections on Day One
- Educational Opportunities on New Technologies
- Special Guest Keynote Speaker
- Projects, Projects, Projects - Road WORK Ahead Panel Discussion
- ADOT BECO Open House and DBE Goals Update
- Fun with Friends and Colleagues Post-Conference

ENHANCE YOUR PARTICIPATION BY SPONSORING  
CONTACT [MICHELLE@ORGANIZEDAFFAIR.COM](mailto:MICHELLE@ORGANIZEDAFFAIR.COM)

**REGISTER FREE TODAY**

**ADOT**

[adotdbeconference.eventbrite.com](http://adotdbeconference.eventbrite.com)