



BACKGROUND

As the primary route from the city of Maricopa to the Phoenix area, State Route 347 (SR 347) has become a highly traveled corridor. In spring 2023, ADOT completed a safety study on SR 347 between I-10 and the northern city limits of Maricopa. The Road Safety Assessment (RSA) identified potential safety issues related to roadway traffic and evaluated possible ways to improve safety for drivers.

As a result of this assessment, the following will be implemented as interim measures to improve traffic conditions until more long-term improvements can be made.

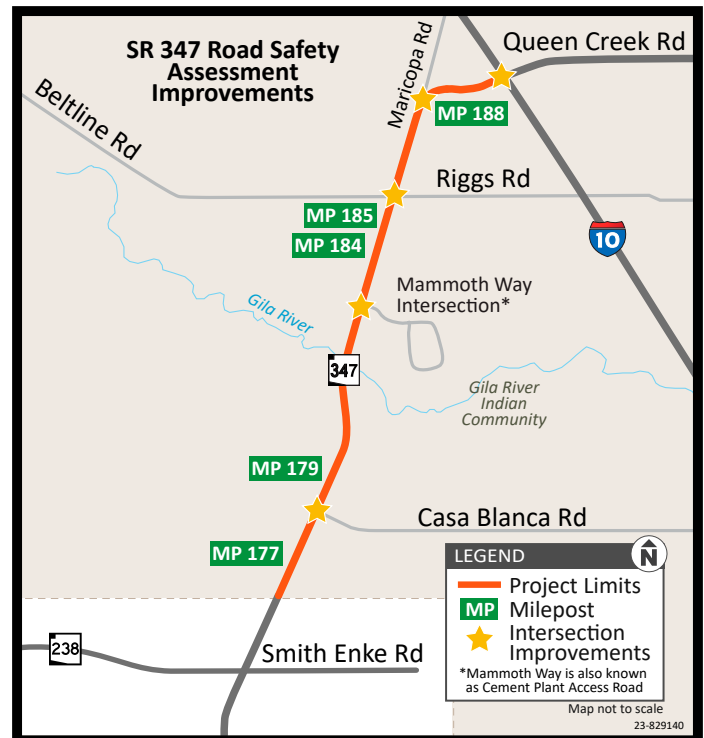


STRIPING IMPROVEMENTS

What: Restriping will occur in the following areas to add or extend turn lanes: Queen Creek Road/Interstate 10 interchange; Riggs Road intersection; Casa Blanca Road intersection; Old Maricopa Road intersection; and the Mammoth Way intersection.

Why: Restriping will allow for more vehicles to queue in the turn lanes and potentially alleviate some of the congestion and back-ups at these intersections.

When: These changes were implemented in October 2023.



SIGNAGE AND SIGNAL IMPROVEMENTS

What: New traffic signs will be added or replaced at intersections. There will also be an additional signal pole installed at the eastbound I-10/Queen Creek off-ramp. Traffic signal timing has been adjusted, and will continue to be monitored and adjusted as needed in the future. Reflective signal head backplates will also be installed.

Why: The new signs and existing sign changes will provide additional guidance for lane usage and improve both driver awareness and line of sight at intersections. The new signal pole (I-10/Queen Creek Road) is an additional signal head that will improve the signal timing and better manage the traffic coming off the freeway. The signal timing adjustments will help alleviate unnecessary stopping of traffic at certain intersections. The reflective backplates on signals improve visibility in both daylight and darkness.

When: The reflective backplates were installed in October 2023. Some of the signs and signals require environmental clearance and are estimated to take 4-6 months.



EMERGENCY SIGNAL AHEAD SIGNS

The implementation of flashing Emergency Signal Ahead Signs and beacons at certain intersections is still under review. These devices are intended to reinforce awareness of existing traffic signals and can be placed in advance of signalized intersections where the intersection is hidden from the view of approaching travelers. If deemed appropriate, installation will also require environmental clearance.



MEDIAN CROSSOVERS

What: Four existing median crossovers will be refreshed as needed to allow access for emergency vehicle use. One additional median crossover will be created for an additional access point in the corridor. These locations are: milepost (MP) 177.81, MP 179.22, MP 184.24 and MP 188.62; and a new crossover at MP 185.77.

Why: These improvements will allow for better access for first responders throughout the corridor in the event of an accident.

When: The work for the median crossovers requires environmental clearance and the new location requires a drainage plan. It is anticipated that this process will take 4-6 months.



SPEED ADJUSTMENT

What: Crews will remove signs that currently reduce the speed limit from 65 mph to 55 mph approaching intersections.

Why: This change is intended to increase compliance, reduce differential speeds, reduce the need for lane changing and potentially reduce rear-end crashes.

When: New signs were installed in October 2023.



CONTACT US

- ▶ Phone: Call the ADOT Project Information Line at 855.712.8530.
- ▶ Línea de Información del Proyecto ADOT al 855.712.8530
- ▶ Email: Kimberly Larson at KLarson@azdot.gov
- ▶ Mail: ADOT Communications and Public Involvement, 1655 W. Jackson St., MD 126F, Phoenix, AZ 85007

Pursuant to Title VI of the Civil Rights Act of 1964, the Americans with Disabilities Act (ADA) and other nondiscrimination laws and authorities, ADOT does not discriminate on the basis of race, color, national origin, sex, age, or disability. Persons that require a reasonable accommodation based on language or disability should contact Kimberly Larson at 855.712.8530 or KLarson@azdot.gov. Requests should be made as early as possible to ensure the State has an opportunity to address the accommodation.

De acuerdo con el Título VI de la Ley de Derechos Civiles de 1964, la Ley de Estadounidenses con Discapacidades (ADA por sus siglas en inglés) y otras normas y leyes antidiscriminatorias, el Departamento de Transporte de Arizona (ADOT) no discrimina por motivos de raza, color, origen nacional, sexo, edad o discapacidad. Las personas que requieran asistencia (dentro de lo razonable) ya sea por el idioma o discapacidad deben ponerse en contacto con Kimberly Larson 855.712.8530 o KLarson@azdot.gov. Las solicitudes deben hacerse lo más antes posible para asegurar que el Estado tenga la oportunidad de hacer los arreglos necesarios.