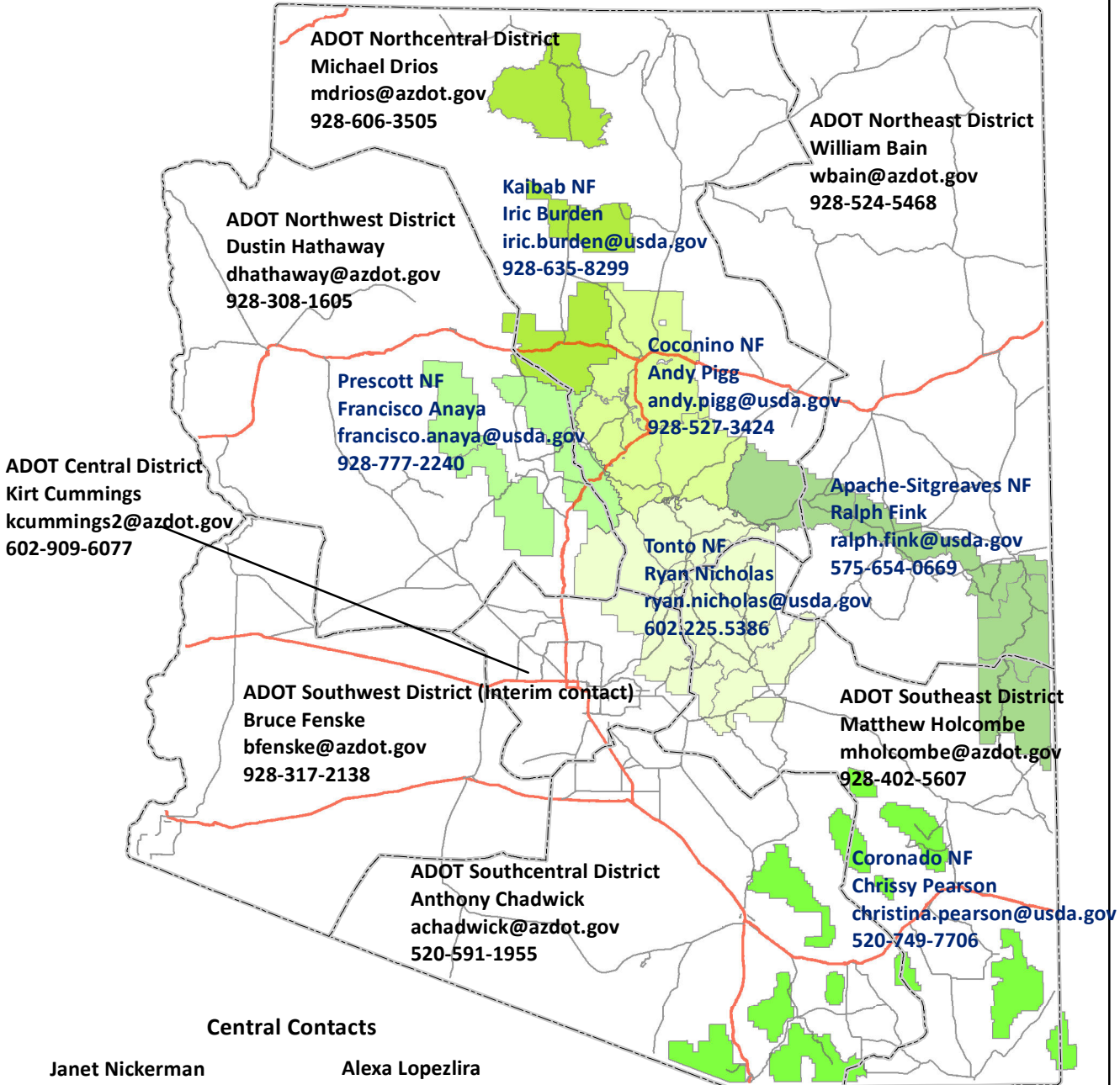


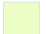
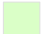
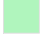



ADOT and National Forest Herbicide/Invasive Species Contacts



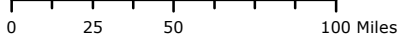
Central Contacts

Janet Nickerman
 Forest Service Region 3
 Invasive Species/Pesticides
 janet.nickerman@usda.gov

Alexa Lopezlira
 ADOT Environmental Planning
 alopezlira@azdot.gov
 928-679-0741

- | National Forests | |
|--|---|
|  Coconino |  Prescott |
|  Coronado |  Tonto |
|  Kaibab |  Apache-Sitgreaves |

ADOT Districts



N



Updated 8/14/2023