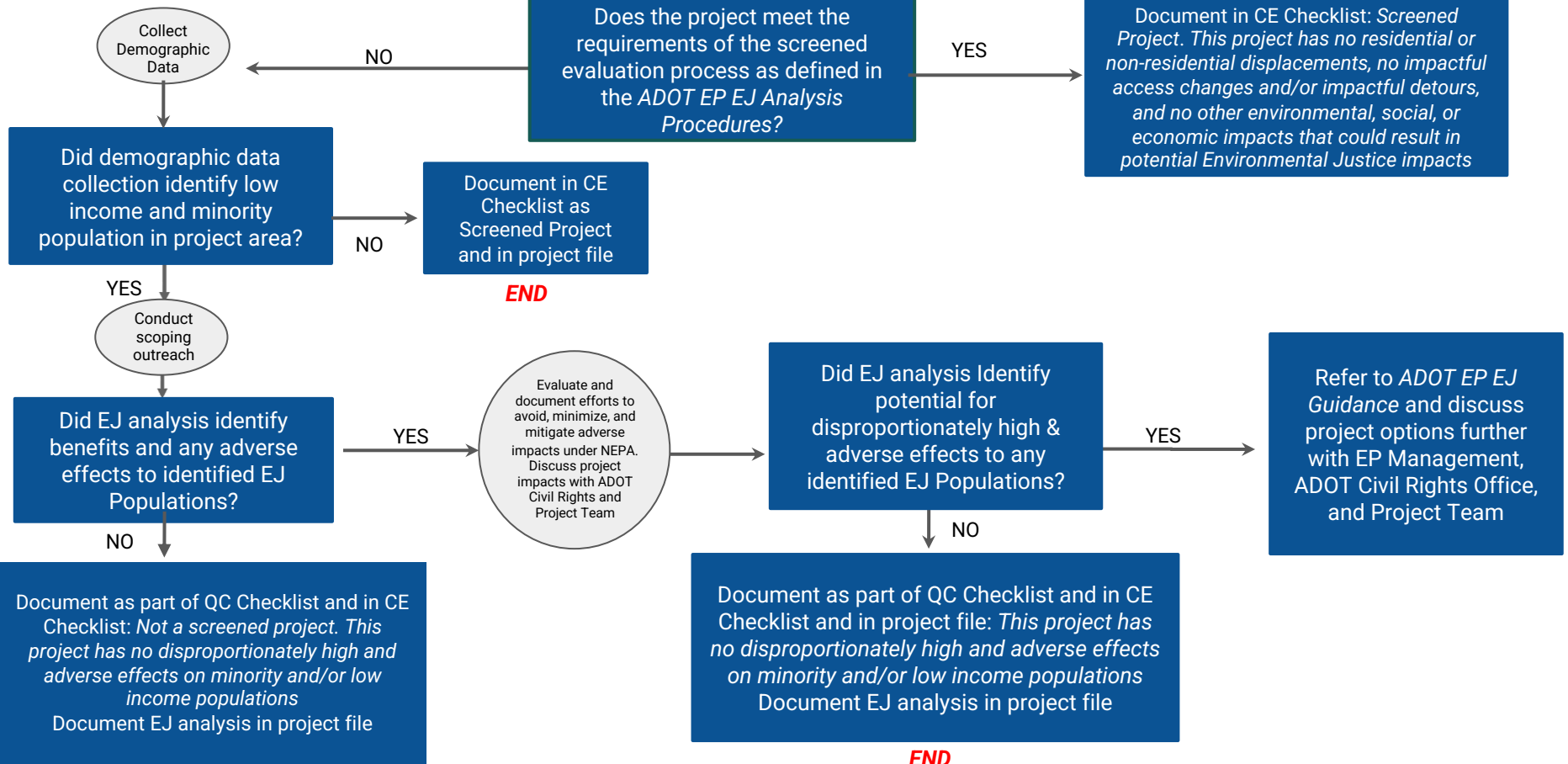


# Environmental Justice Flowchart for 326 MOU CE Projects

**START**

**END**



Does the project meet the requirements of the screened evaluation process as defined in the ADOT EP EJ Analysis Procedures?

Document in CE Checklist: *Screened Project. This project has no residential or non-residential displacements, no impactful access changes and/or impactful detours, and no other environmental, social, or economic impacts that could result in potential Environmental Justice impacts*

Document in CE Checklist as Screened Project and in project file

**END**

Did EJ analysis Identify potential for disproportionately high & adverse effects to any identified EJ Populations?

Refer to ADOT EP EJ Guidance and discuss project options further with EP Management, ADOT Civil Rights Office, and Project Team

Document as part of QC Checklist and in CE Checklist and in project file: *This project has no disproportionately high and adverse effects on minority and/or low income populations*  
Document EJ analysis in project file

**END**

Document as part of QC Checklist and in CE Checklist: *Not a screened project. This project has no disproportionately high and adverse effects on minority and/or low income populations*  
Document EJ analysis in project file

**END**