

# Welcome

---

## North-South Corridor Study (NSCS)

---

Design Concept Report (DCR) and  
Tier 2 Environmental Study  
US 60 to Arizona Farms Road (Segment 1)  
Public Information Meeting

**Please sign in at the  
welcome table.**

Please see a staff member  
if you need Spanish  
interpretation assistance.

Consulte a un personal  
miembro si necesita asistencia  
de interpretación en español.



[www.northsouth-segment1.com](http://www.northsouth-segment1.com)

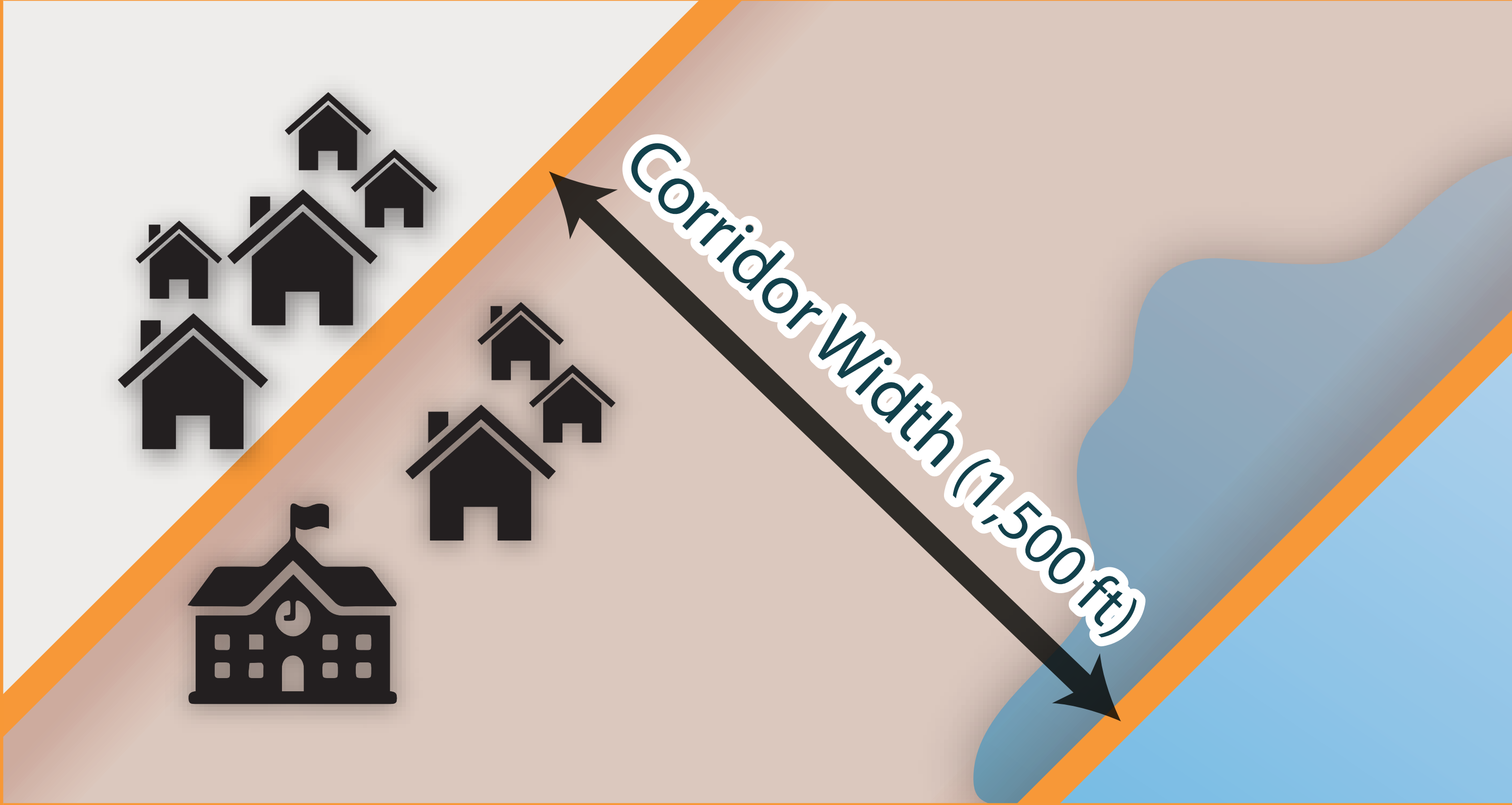
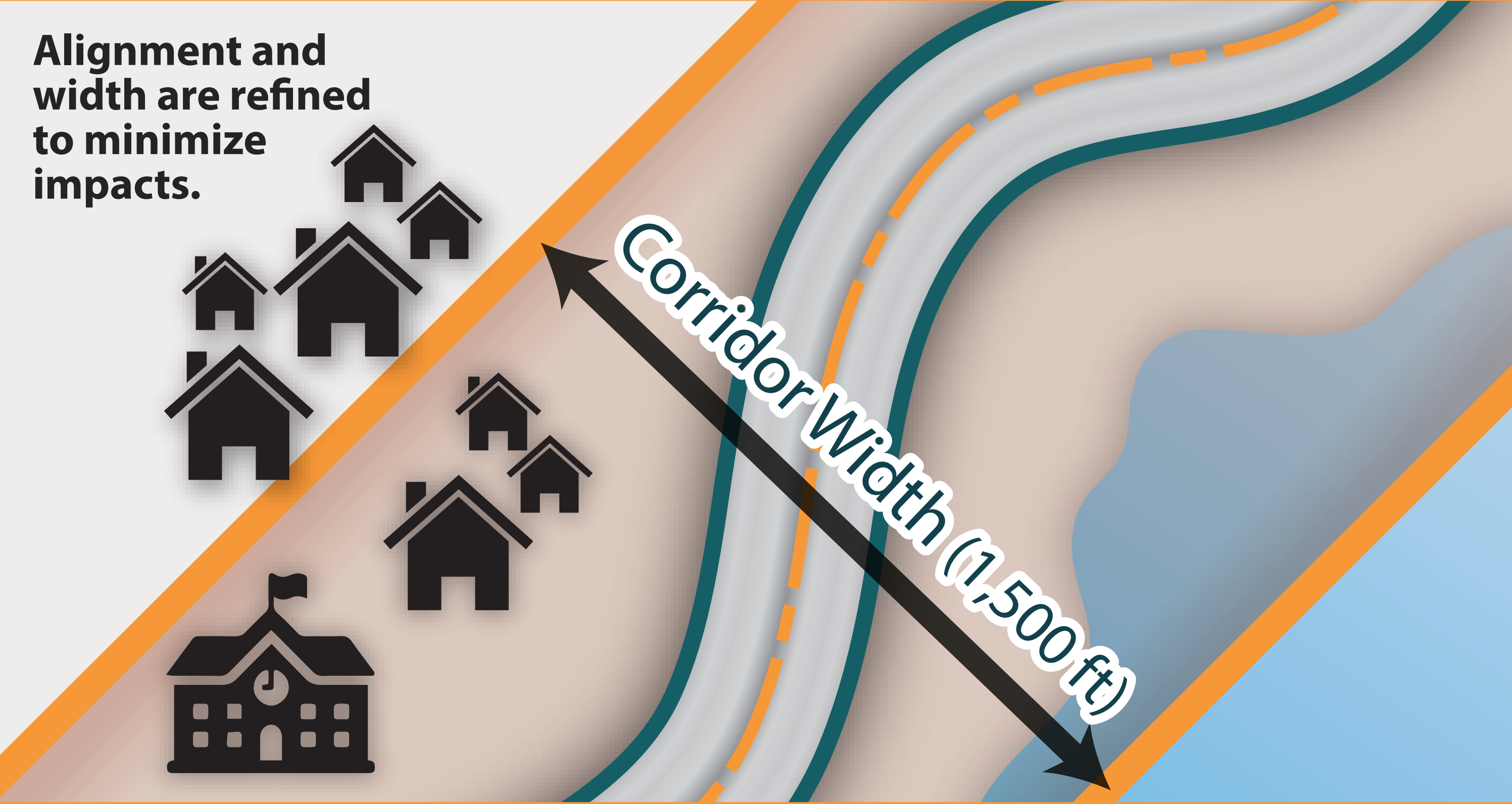
**ADOT**

# Study Area



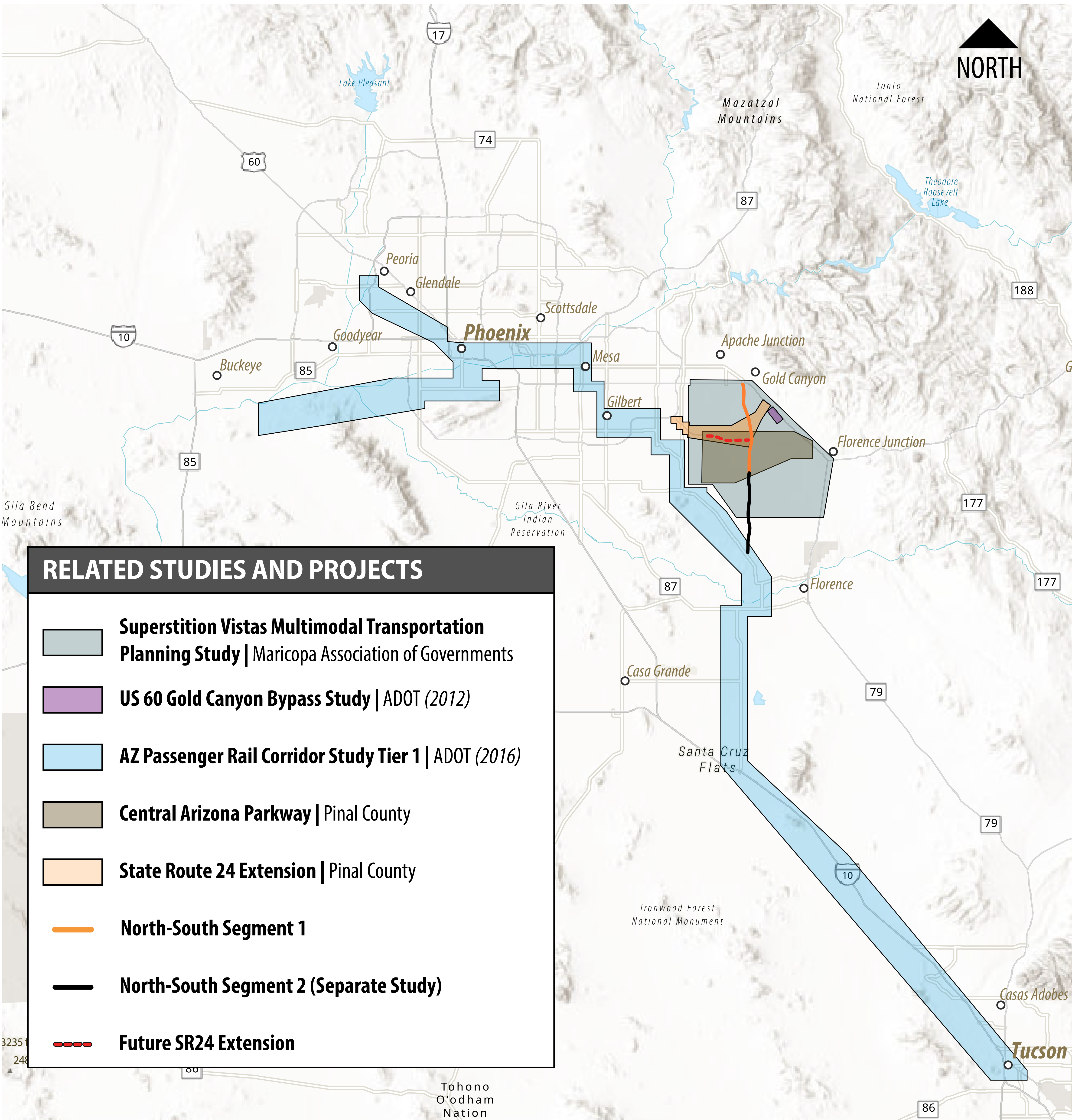


## Tier 1 Studies vs. Tier 2 Studies

	TIER 1	TIER 2
<b>PURPOSE</b>	 <p>Alignment and width are refined to minimize impacts.</p>	
<b>OUTCOME</b>	To evaluate wide corridors in multiple locations, within which a new transportation facility could be located.	To evaluate design concepts for specific alignments within the corridor, approximately 400-foot-wide for a typical freeway alignment.
<b>PURPOSE</b>	Select a single corridor (1,500-foot-wide) within which an alignment would be identified during Tier 2 EIS.	Select a single alignment and enable permitting for that alignment.

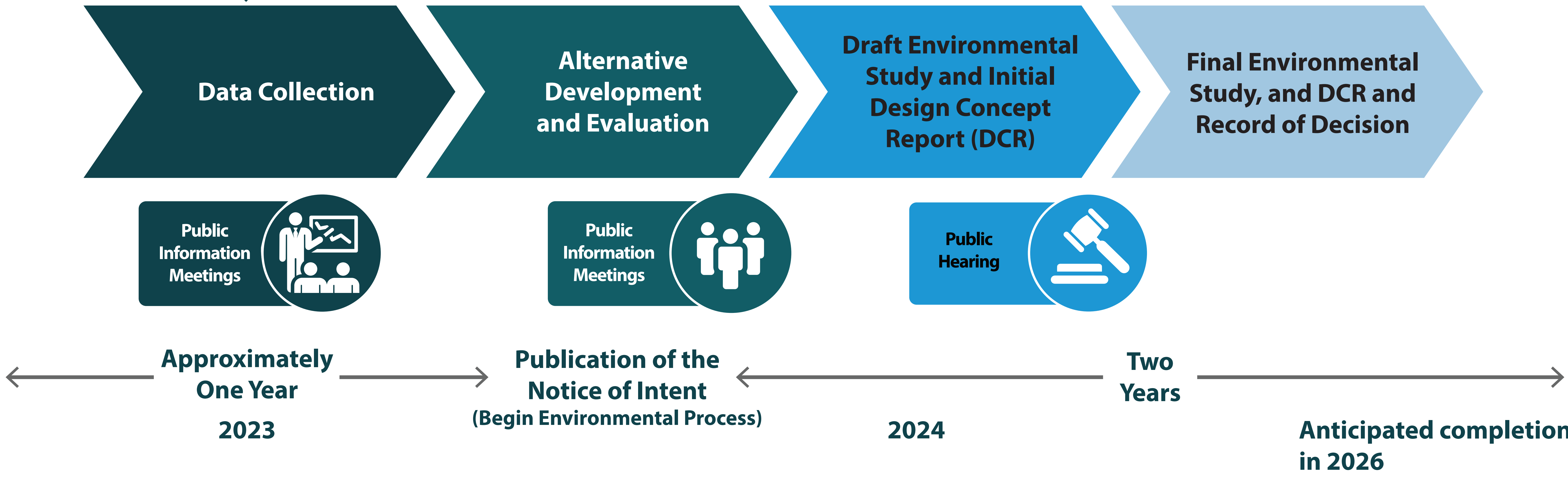


# Other Studies



# Study Process and Schedule

We Are Here



# How to Comment

Share your thoughts anytime through  
September 27, 2023



**Attend one of our  
public meetings  
(in-person or virtual)**



**Online comments:**  
[www.northsouth-segment1.com](http://www.northsouth-segment1.com)



**Email:**  
[info@northsouth-segment1.com](mailto:info@northsouth-segment1.com)



**Mail:**  
ADOT NSCS Segment 1 c/o HDR, Inc.  
20 E. Thomas Rd., Suite 2500  
Phoenix, AZ 85012



**Call:** 602-474-3990

