

Arizona Department of Transportation

Strategic Highway Safety Plan & Active Transportation Safety Action Plan

Spanish Interpretation Available

Interpretación en español disponible

Please notify a staff member or raise your hand now if you need Spanish interpretation.

Notifique a un miembro del personal o levante la mano ahora si necesita interpretación en español.

Purpose of Tonight's Meeting

- Provide an overview of the State Highway Safety Plan (SHSP) and Active Transportation Safety Action Plan (ATSAP).
- Introduce the Safe System Approach.
- Provide an opportunity for the public to ask questions and make comments.



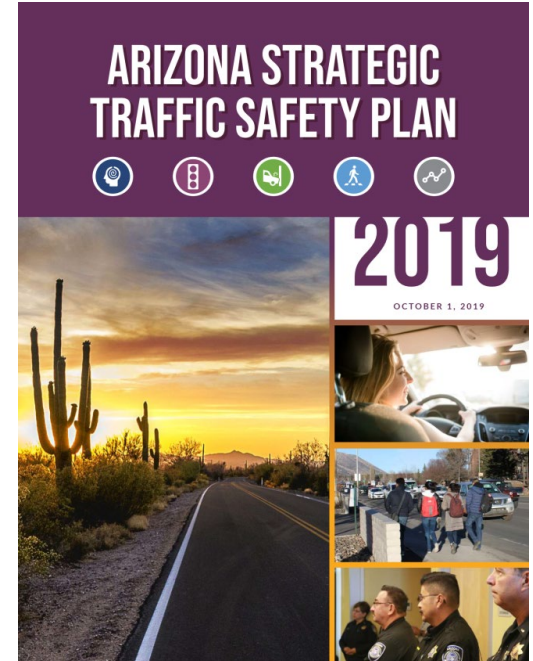
Tonight's Presenters

- Daniel Oldham, SHSP Project Manager
- Elaine Mariolle, ATSAP Project Manager
- Michael Grandy, Consultant SHSP and ATSAP Project Manager
- Jessica Parks, Consultant Public Involvement Manager

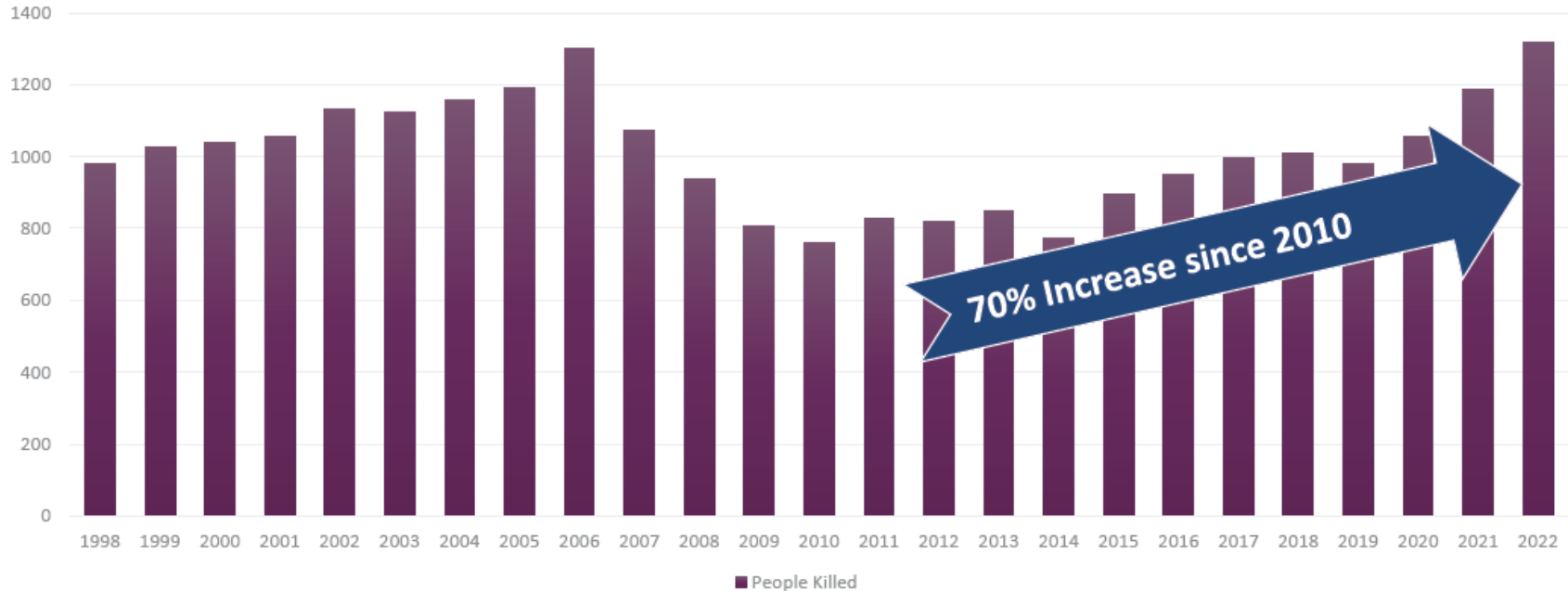
Strategic Highway Safety Plan Overview

Strategic Highway Safety Plan

- Policy document that provides a roadmap for how ADOT and its safety partners will reduce fatalities and serious injuries on Arizona roadways in the next five years.
- Identifies specific strategies and actions to achieve a targeted safety goal.



Arizona Traffic Fatalities from 1998-2022*



*2022 data as of 12/4/23

SHSP Vision and Goal

- **Vision:** Creating a shared responsibility so everyone arrives safely home.
- **Goal:** Reduce life-altering traffic crashes* by 20% in by 2030.

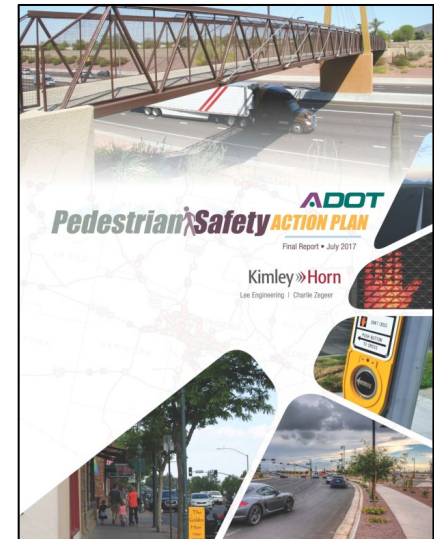
*Life-altering crashes are those that result in fatalities or serious injuries.



Active Transportation Safety Action Plan Overview

Active Transportation Safety Action Plan

Plan will identify specific projects and estimated costs for recommended pedestrian and bicyclist improvements on the State Highway System (SHS).



Arizona Vulnerable User Fatalities from 1998-2022*



*2022 data as of 12/4/23

ATSAP Goals

- **Short-term:** Reduce life-altering crashes involving pedestrians and bicyclists on the SHS 20% by 2030.
- **Long-term:** Eliminate all life-altering crashes involving pedestrians and bicyclists on the SHS.

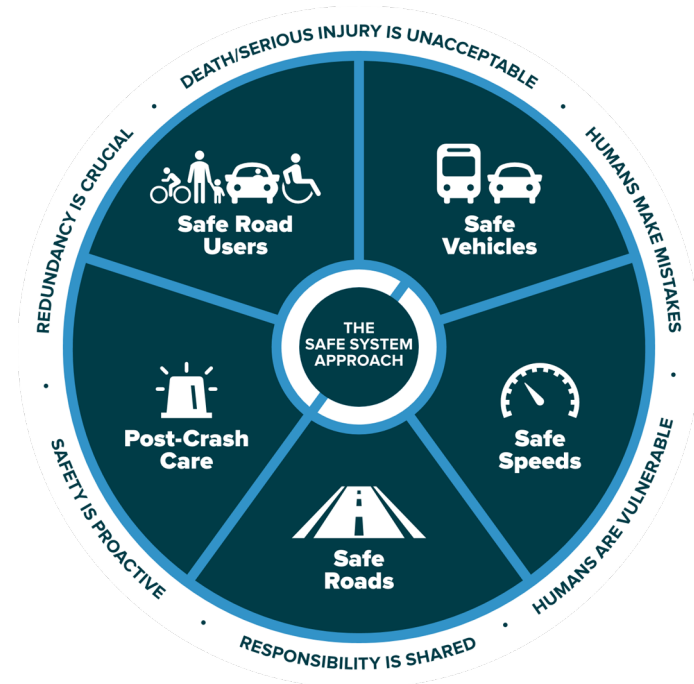


Safe System Approach

Safe System Approach

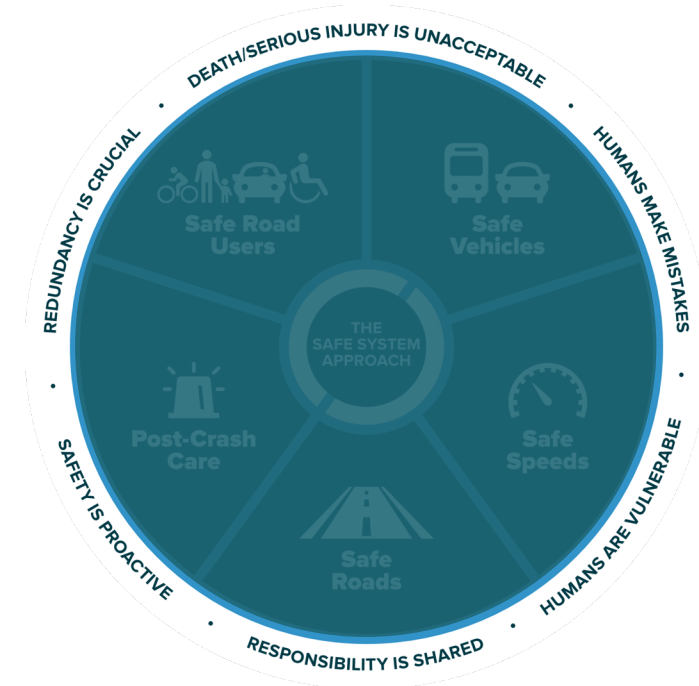
New approach that aims to eliminate fatal and serious injuries for all road users by looking at all factors affecting safety to:

- Prevent crashes from happening.
- Minimize the harm caused to those involved when crashes do occur.



Safe System Principles

- Death/serious injury is unacceptable
- Humans make mistakes
- Humans are vulnerable
- Responsibility is shared
- Safety is proactive
- Redundancy is crucial



Safe System Elements

- Safe road users
- Safe vehicles
- Safe speeds
- Safe roads
- Post-crash care



Safety Focus Areas



HUMAN BEHAVIOR

- ➔ Alcohol/Drug/Impaired
- ➔ Distracted/Sleepy
- ➔ Speeding/Aggressive Driving
- ➔ No Helmet/No Restraint

74%
of Fatalities



VULNERABLE ROAD USERS

- ➔ Pedestrian
- ➔ Bicyclist
- ➔ Worker in Work Zone

25%
of Fatalities



INTERSECTIONS

- ➔ Junction-Related
- ➔ Railroad Crossings

28%
of Fatalities



LANE DEPARTURE

- ➔ Ran Off Road/Overturned
- ➔ Environmental
 - > Animal
 - > Rain/Snow/Ice
 - > Wind/Dust

50%
of Fatalities



TRIBAL LANDS

10%
of Fatalities

Data: 2013-2022, Fatalities

Note: The sum of percentages exceeds 100% because a crash can pertain to more than one focus area.

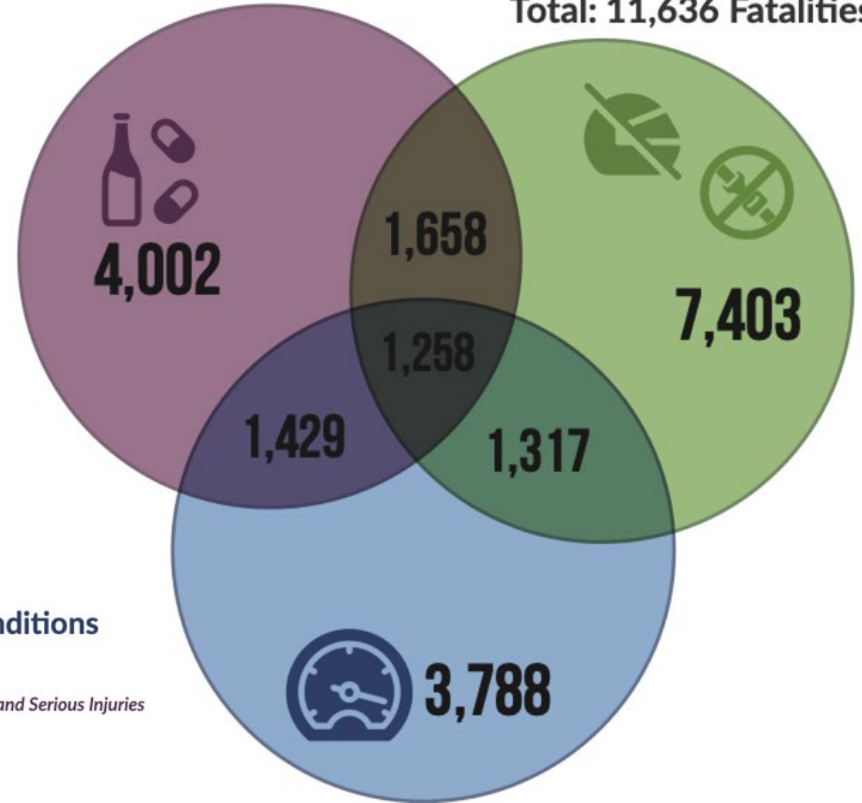


HUMAN BEHAVIOR

Factors leading to Arizona Traffic Fatalities

Alcohol, Drugs, Impaired
Total: 8,347 Fatalities

No Helmet/
No Restraint
Total: 11,636 Fatalities



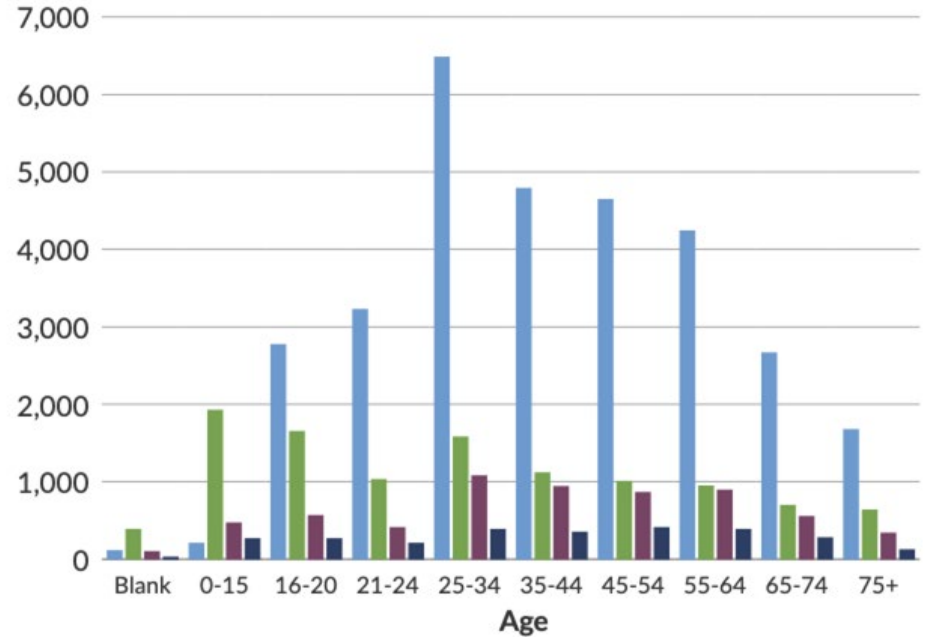
Speeding Too Fast for Conditions
Total: 7,792 Fatalities

Data: 2013-2022, Fatalities and Serious Injuries



HUMAN BEHAVIOR

Fatalities and Serious Injuries by a Person's Age



Driver



Passenger



Pedestrian



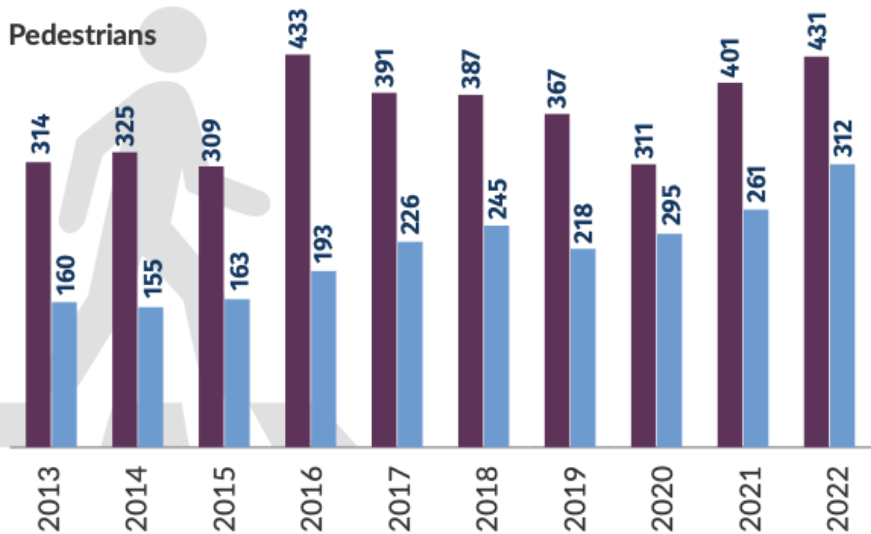
Bicyclist



VULNERABLE ROAD USERS

Fatalities and Serious Injuries

Pedestrians



Bicyclists



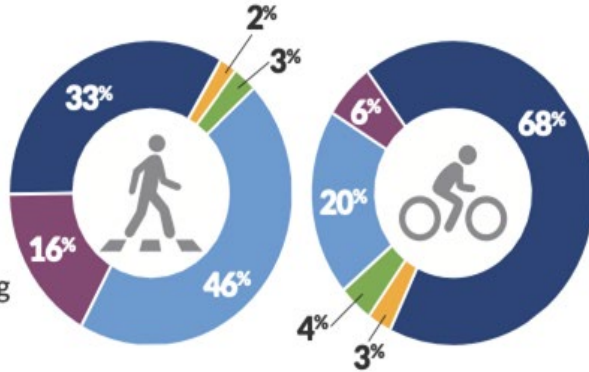
■ Serious Injuries ■ Fatalities



VULNERABLE ROAD USERS

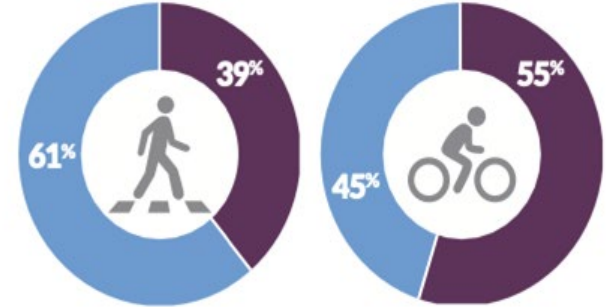
When:

- Daylight
- Dawn
- Dusk
- Dark with lighting
- Dark without lighting



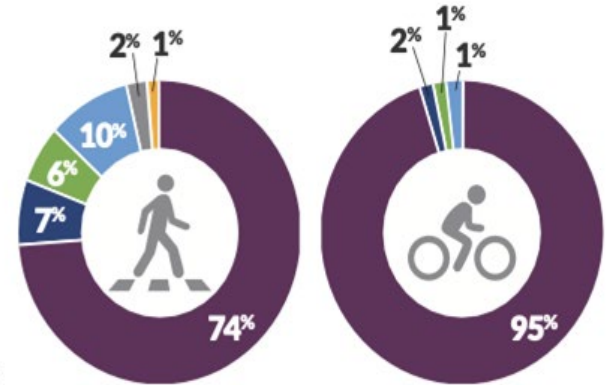
Where:

- Intersection
- Mid-Block



While:

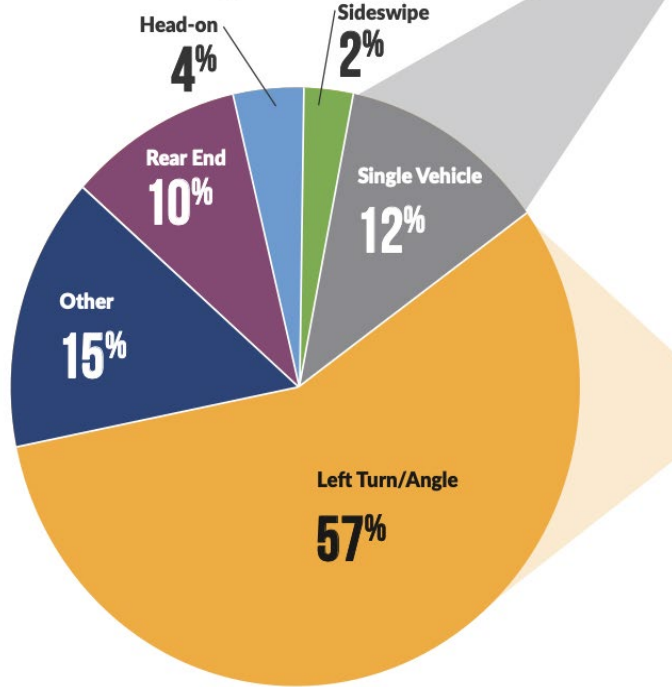
- Crossing the road
- Traveling with traffic
- Traveling against traffic
- Stopped
- Lying
- Working on vehicle



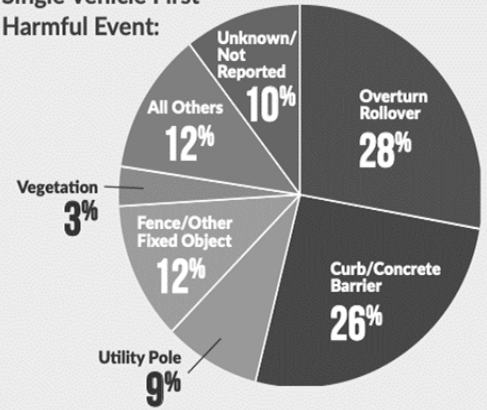


INTERSECTIONS

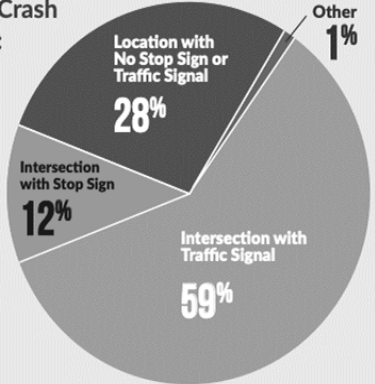
Intersection Crash Types



Single Vehicle First Harmful Event:



Left-Turn Crash Locations:

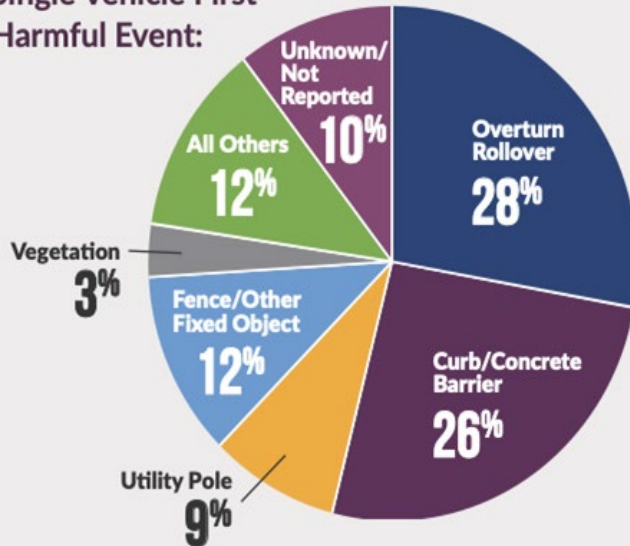


Data: 2013-2022. Fatalities and Serious Injuries

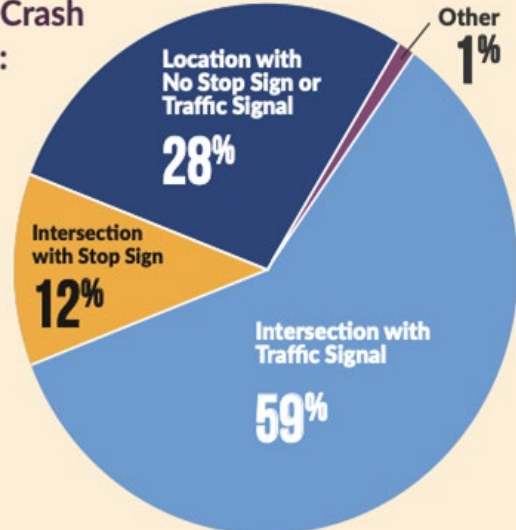


INTERSECTIONS

Single Vehicle First Harmful Event:



Left-Turn Crash Locations:

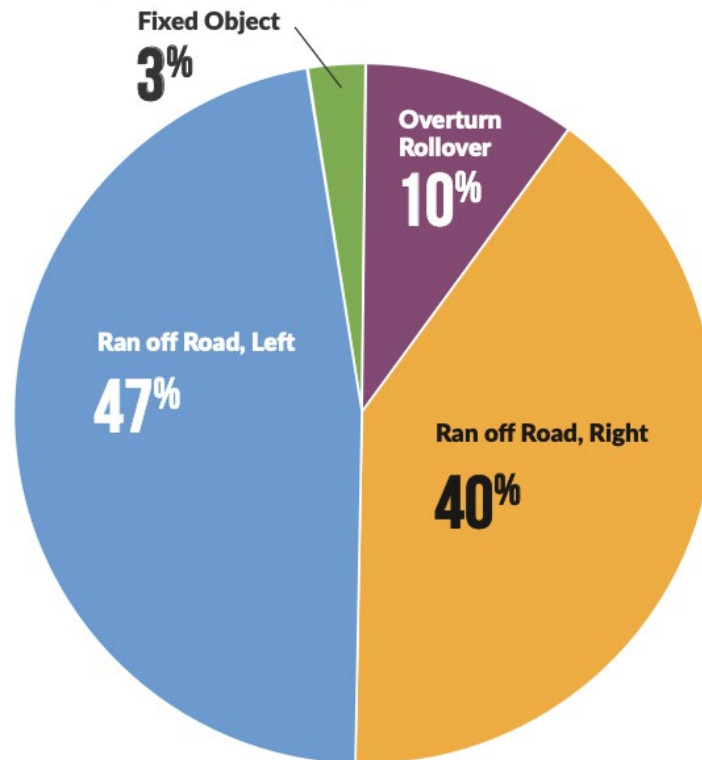




LANE DEPARTURE



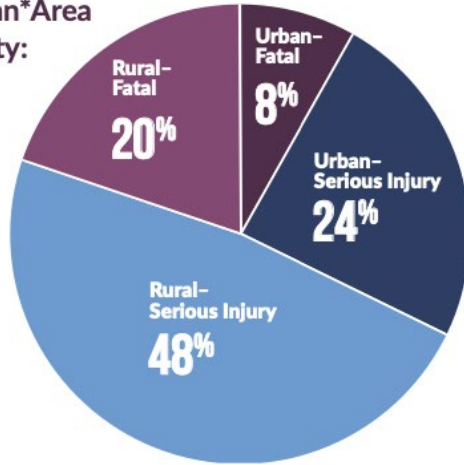
Lane Departure Crash Types:



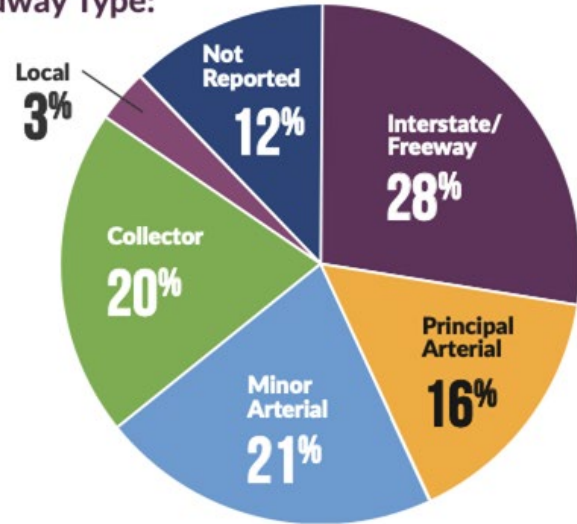


LANE DEPARTURE

Rural/Urban*Area and Severity:



By Roadway Type:



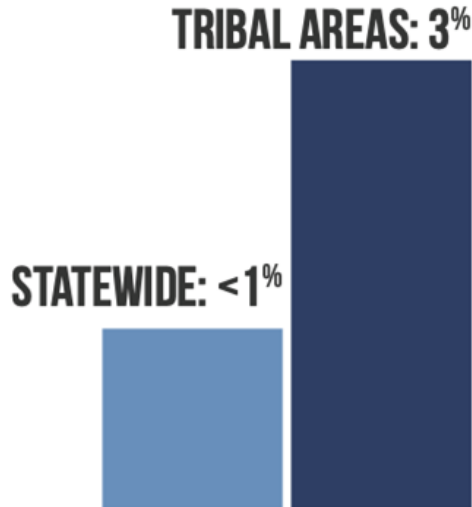
*Urban is defined as any crash occurring within an urban boundary (such as a city or town)

Data: 2013-2022, Fatalities and Serious Injuries

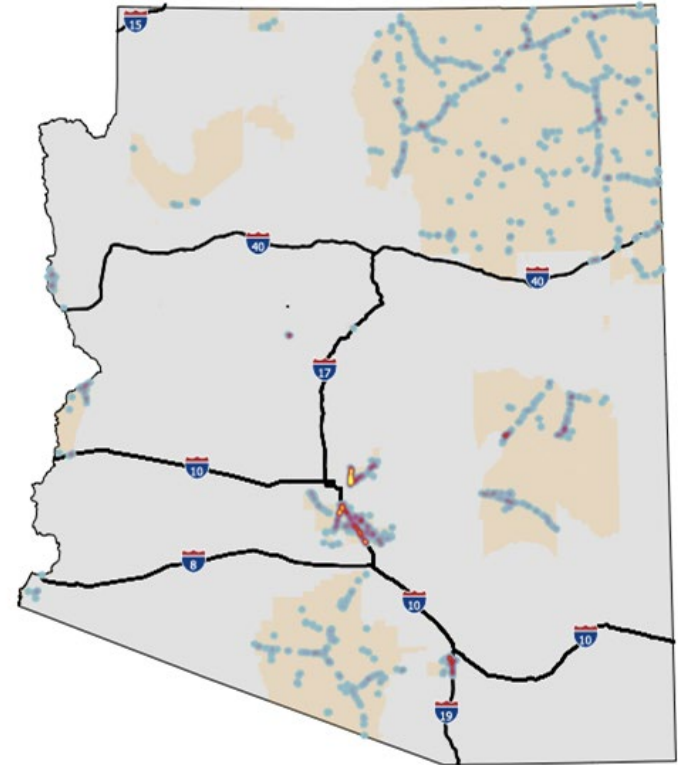
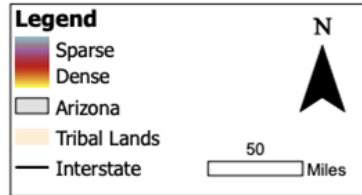


TRIBAL LANDS

Traffic Fatalities in Tribal Areas vs. Statewide



Fatalities and Serious Injuries Heatmap

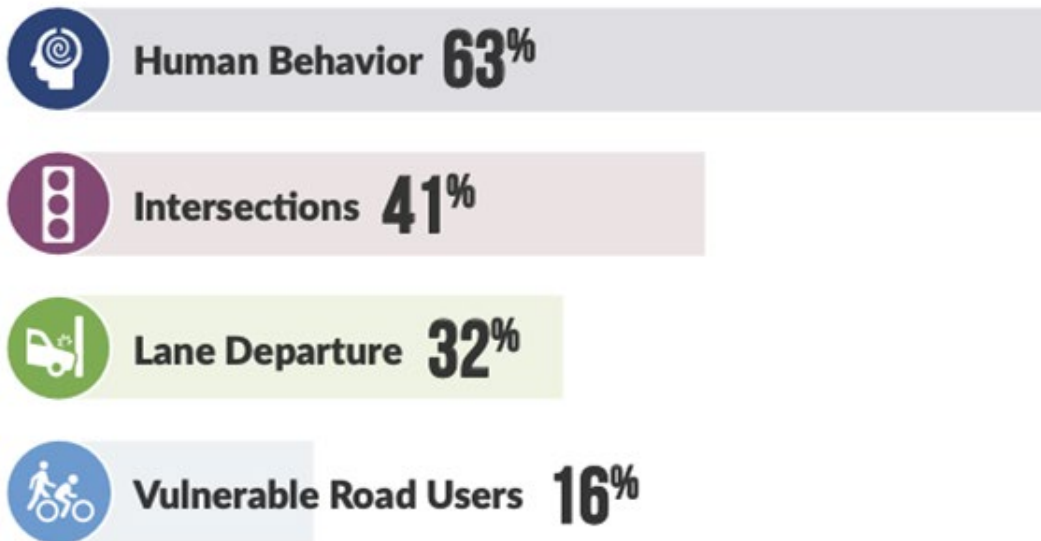


Data: 2013-2022, Fatalities and Serious Injuries



TRIBAL LANDS

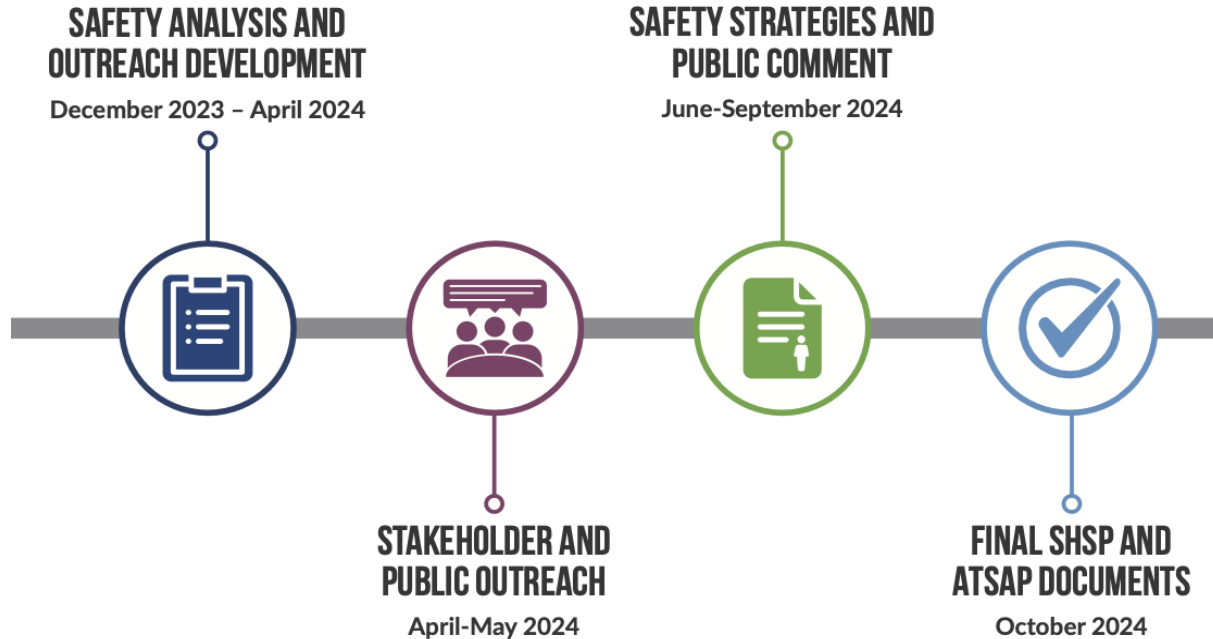
Tribal Land Crash Types by Percentage of Fatalities:



Note: The sum of percentages exceeds 100% because a crash can pertain to more than one focus area.

Public Involvement

Plan Schedule



Public Involvement

- ADOT is seeking public input on the development of the draft SHSP and ATSAP.
 - Public survey
 - Public meetings
 - Public comment period for draft and final documents
- Draft plan will be released for public review and comment.



How to Provide Input

- Tonight's meeting via written or verbal comment
- Online survey: adotsafetyplan.com
- Email: NGBecerra@azdot.gov
- Phone: 855.712.8530
- Mail: Attn: ADOT SHSP and ATSAP, 1655 W. Jackson St., MD 126F, Phoenix, AZ 85007

Deadline for initial input: May 17, 2024

Get More Information

Plan website: azdot.gov/SafetyPlan

- Virtual meeting presentation
- Draft and final documents
- Sign up for the mailing list to be notified of updates



To take the survey and sign up for future updates, visit: adotsafetyplan.com

