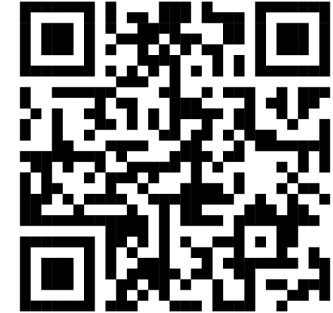


Anonymous Self-ID Survey

- While you wait, we invite you to complete a voluntary survey to help ADOT understand who attends its public meetings and how the department can improve participation.

English: <https://forms.gle/E4WLsCqVa3X5XF8m9>



- Mientras espera, lo invitamos a completar una encuesta voluntaria para ayudar a ADOT a comprender quiénes asisten a sus reuniones públicas y como podrá mejorar la participación de miembros de minorías.

Español: <https://forms.gle/EspuxrUt44REtpWr8>





SR 347 Corridor Projects Widening and Intersection Improvements

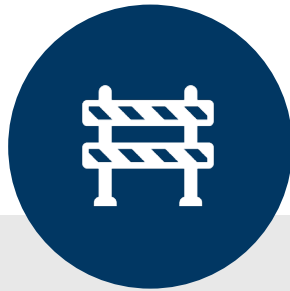
Public Meeting
Maricopa Library and Cultural Center
Aug. 15, 2024



Welcome!

- Restroom locations
- Emergency exits
- Evacuation muster point
- Mute cell phones
- Project team members
- Interpreters available upon request
- Questions and Comments at the end

Purpose of Tonight's Meeting



Discuss Proposed SR 347
Corridor Improvements



Opportunity to ask questions and
provide comments

SR 347 Corridor Projects: Background



The Maricopa Association of Governments (MAG) published a study in June 2022 concluding that, without improvements, the future traffic volumes on SR 347 will exceed the roadway capacity, resulting in unacceptable and failing operations.

Proposed improvements to increase capacity included:

- Adding one lane in each direction from I-10 to the city of Maricopa within the existing median.
- Converting Riggs Road at-grade intersection to grade-separated traffic interchange.
- Reconfiguring other major intersections along the corridor to improve traffic flow and safety.

State Route 347

Proposed Improvements

- Widening SR 347 from I-10 to Maricopa city limits*
- New interchange at Riggs Road
- Intersection improvements at
 - Maricopa Road*
 - Mammoth Way
 - Borgia Road*
 - Casa Blanca Road

* not funded for construction



Public Involvement

Scoping Phase

Summer 2023-Spring 2024

Purpose: Introduce studies, seek input to identify feasible alternatives for improvements.

Activities

- Public survey
- Presentations to Gila River Indian Community Council Districts, Elders Group
- Coordination with Community departments and city of Maricopa
- 700+ comments

Alternatives Phase

Summer 2024

Purpose: Seek input on current alternatives for improvements.

Activities

- Public meetings
- Public survey

WE ARE HERE!



SR 347 Environmental and Engineering Studies

Environmental Considerations:

- Cultural Resources
- Biological Resources
- Social and Economic Considerations
- Hazardous Materials
- Land Ownership, Jurisdiction, and Land Use
- Noise
- Visual Resources
- Water Resources

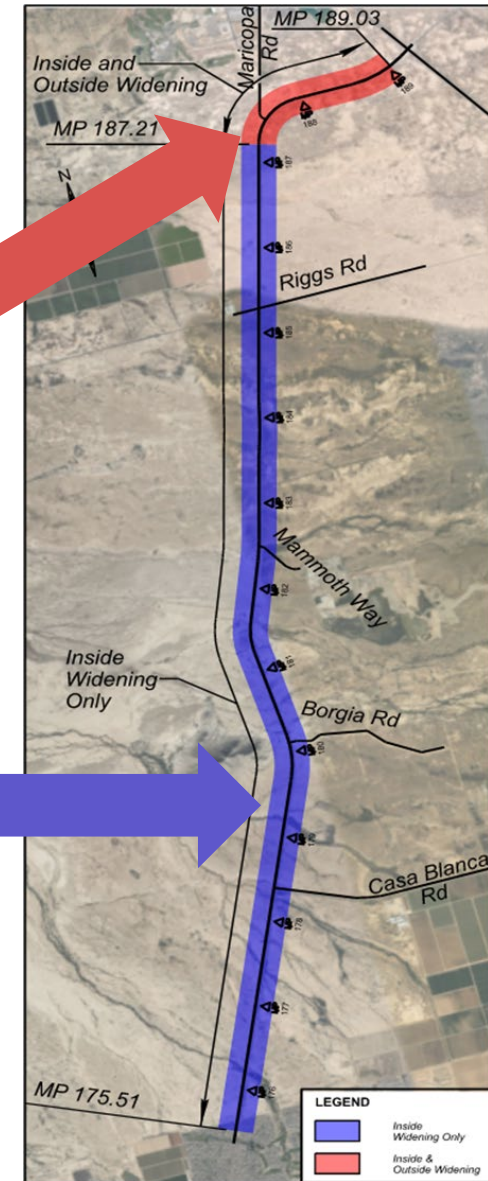
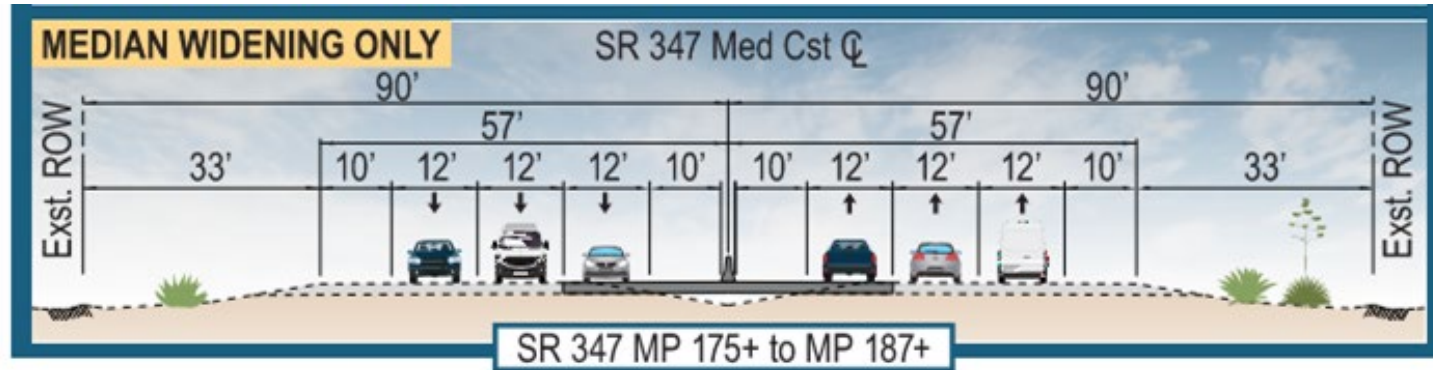
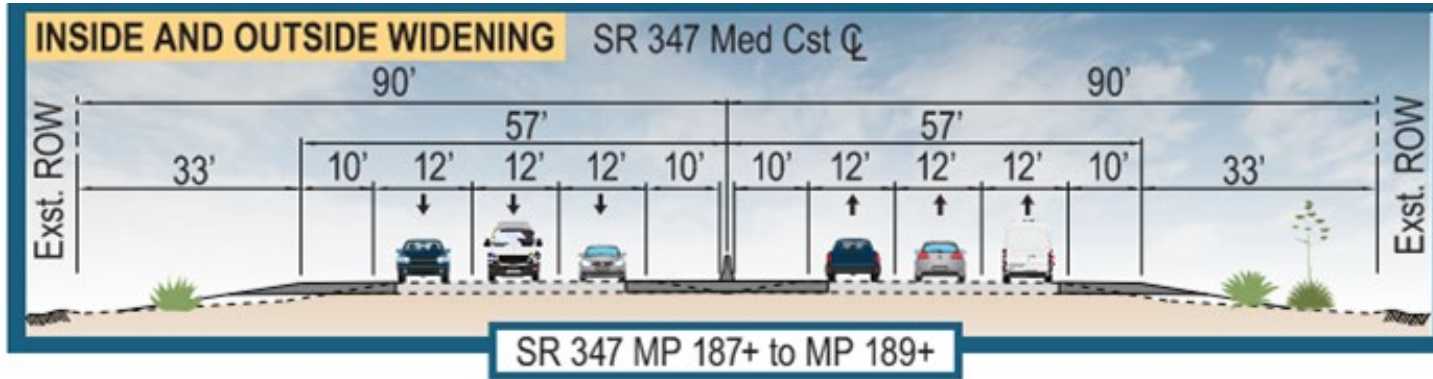
Engineering Considerations:

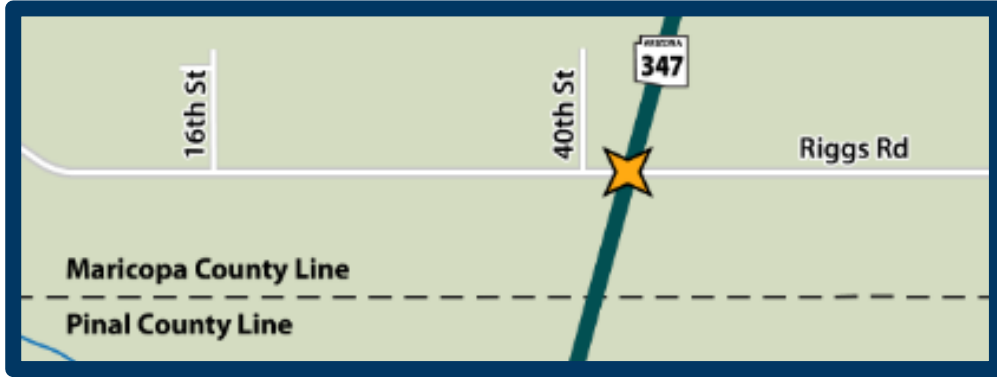
- Traffic Analysis
- Roadway
- Bridges
- Drainage
- Signing and Striping
- Signals and Lighting
- Right-of-Way Needs
- Utility Relocations
- Estimated Cost

State Route 347 Corridor Widening



SR 347 Corridor Widening Alternative

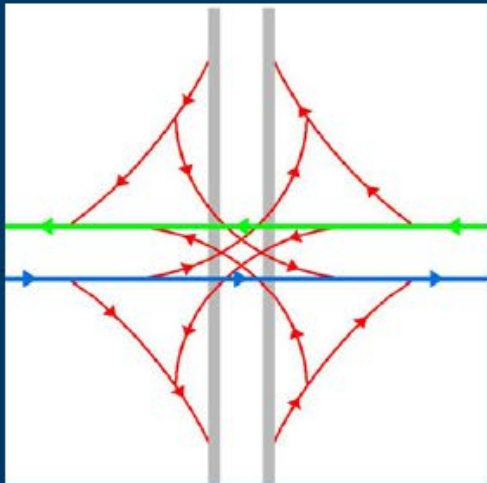




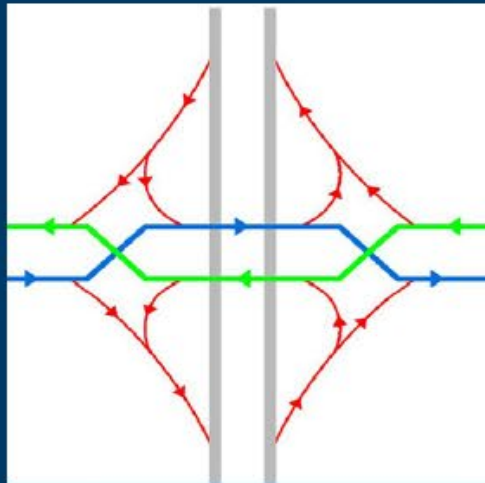
Riggs Rd/SR 347 Interchange Study



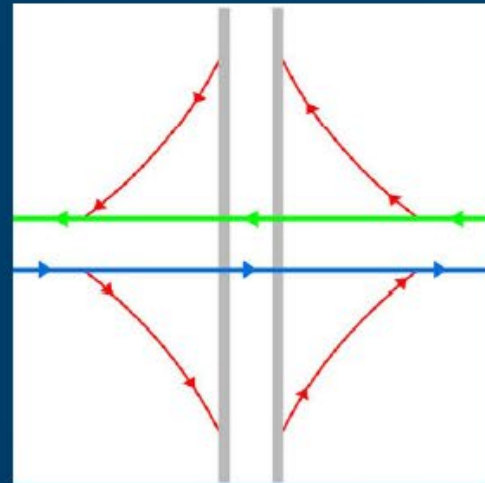
Riggs Rd/SR 347 Interchange Study: Range of Alternatives



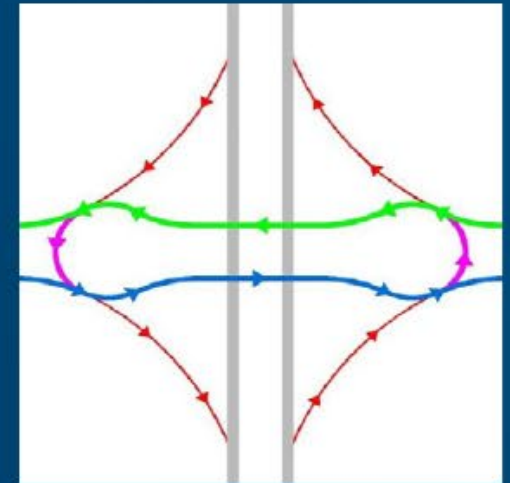
*Single Point Urban
Interchange (SPUI)*



*Diverging Diamond
Interchange (DDI)*

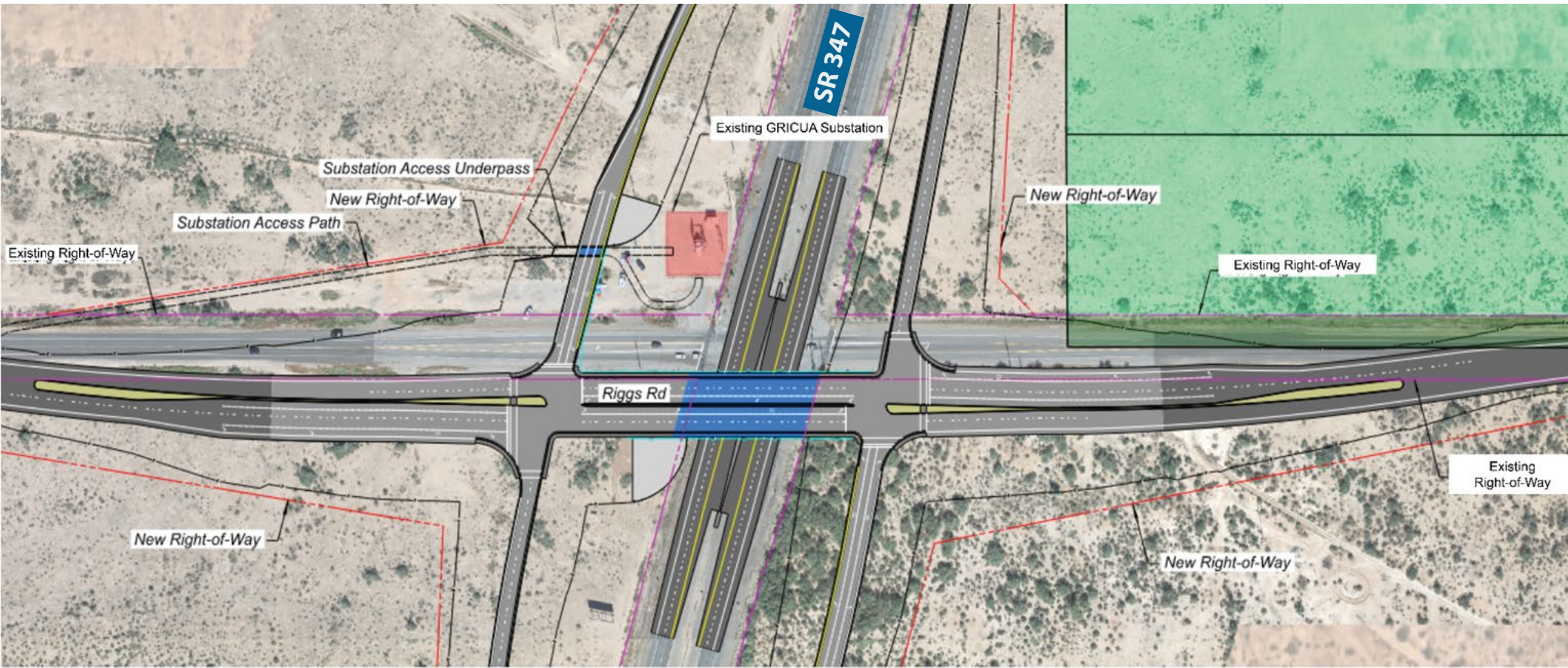


*Diamond Interchange
Tight Diamond (TDI)
Spread Diamond (SDI)*



*Double Roundabout
Interchange (DRI)*

Refined Alternative A2 – Spread Diamond Interchange



Refined Alternative B1 - Shifted Tight Diamond Interchange



Riggs Rd/SR 347 Interchange Study: ADOT Preliminary Preferred Alternative

Alternative B1 - Shifted Tight Diamond

- Meets the project Purpose and Need
- Simplifies access to land adjacent to Riggs Road, since Riggs would remain at its existing grade
- Provides improved access to electrical substation over Alt. A2
- Requires approximately seven fewer acres of Right of Way than Alt. A2
- Allows for direct passage of oversized loads traveling on SR 347
- Reduces construction duration by three months over Alt. A2

SR 347

Intersections: Casa Blanca Road



SR 347 Intersections: Casa Blanca Road

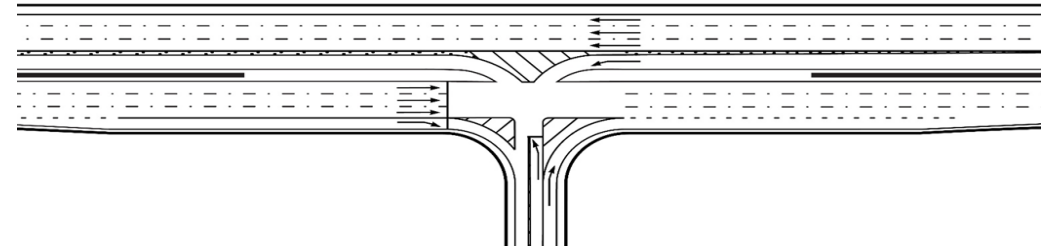
Existing Condition

- The Casa Blanca Road intersection currently operates as a signalized Standard T intersection

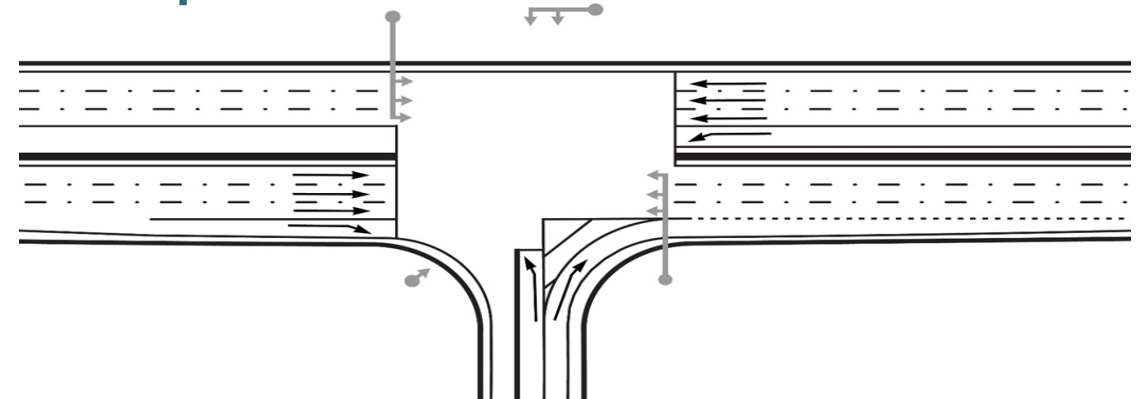
Alternatives

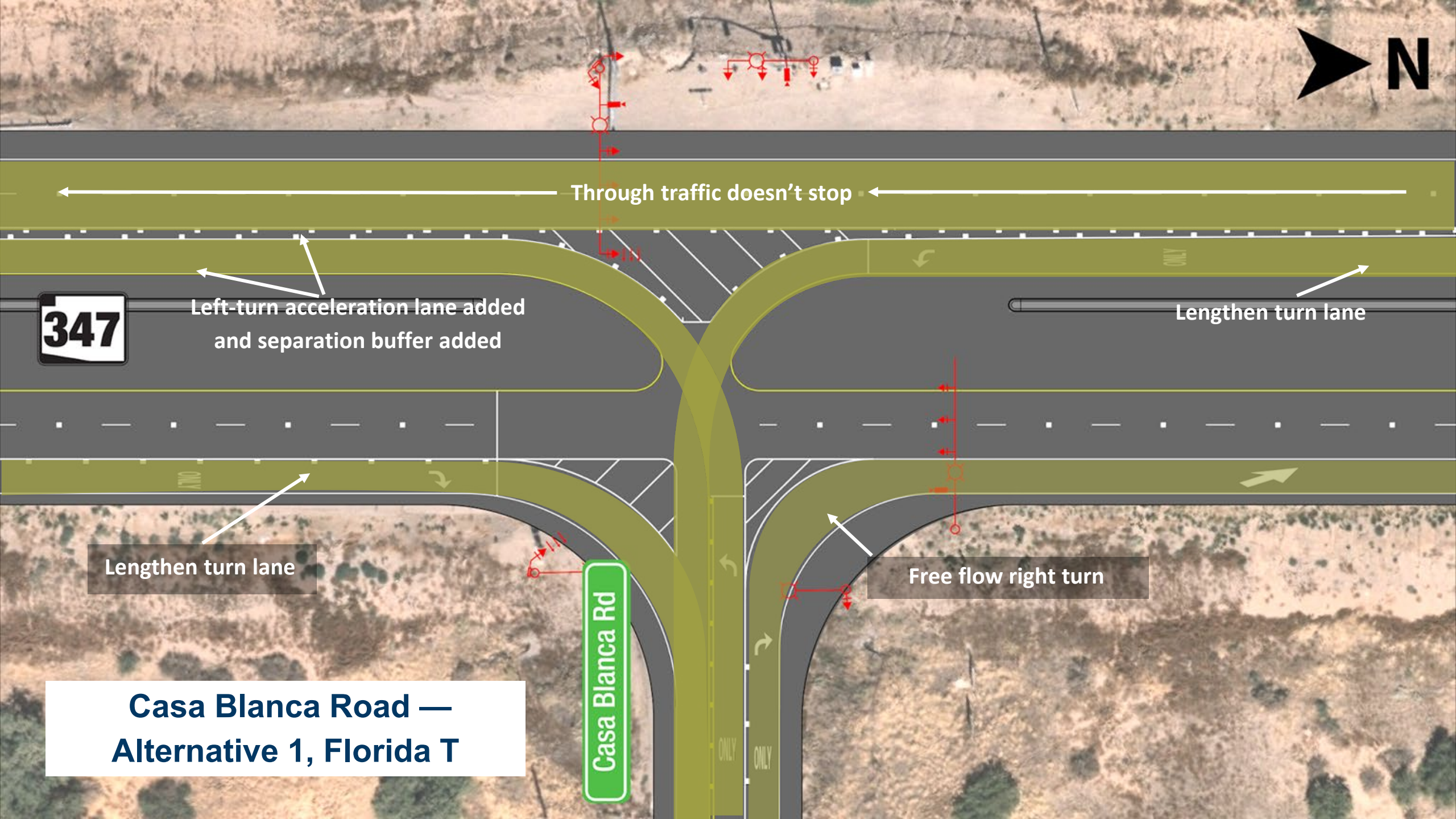
- Reconstructing as a Florida T intersection
- Improving the existing Standard T intersection

Alternative 1
Florida T Intersection



Alternative 2
Improved Standard T Intersection





Through traffic doesn't stop

347

Left-turn acceleration lane added
and separation buffer added

Lengthen turn lane

Lengthen turn lane

Free flow right turn

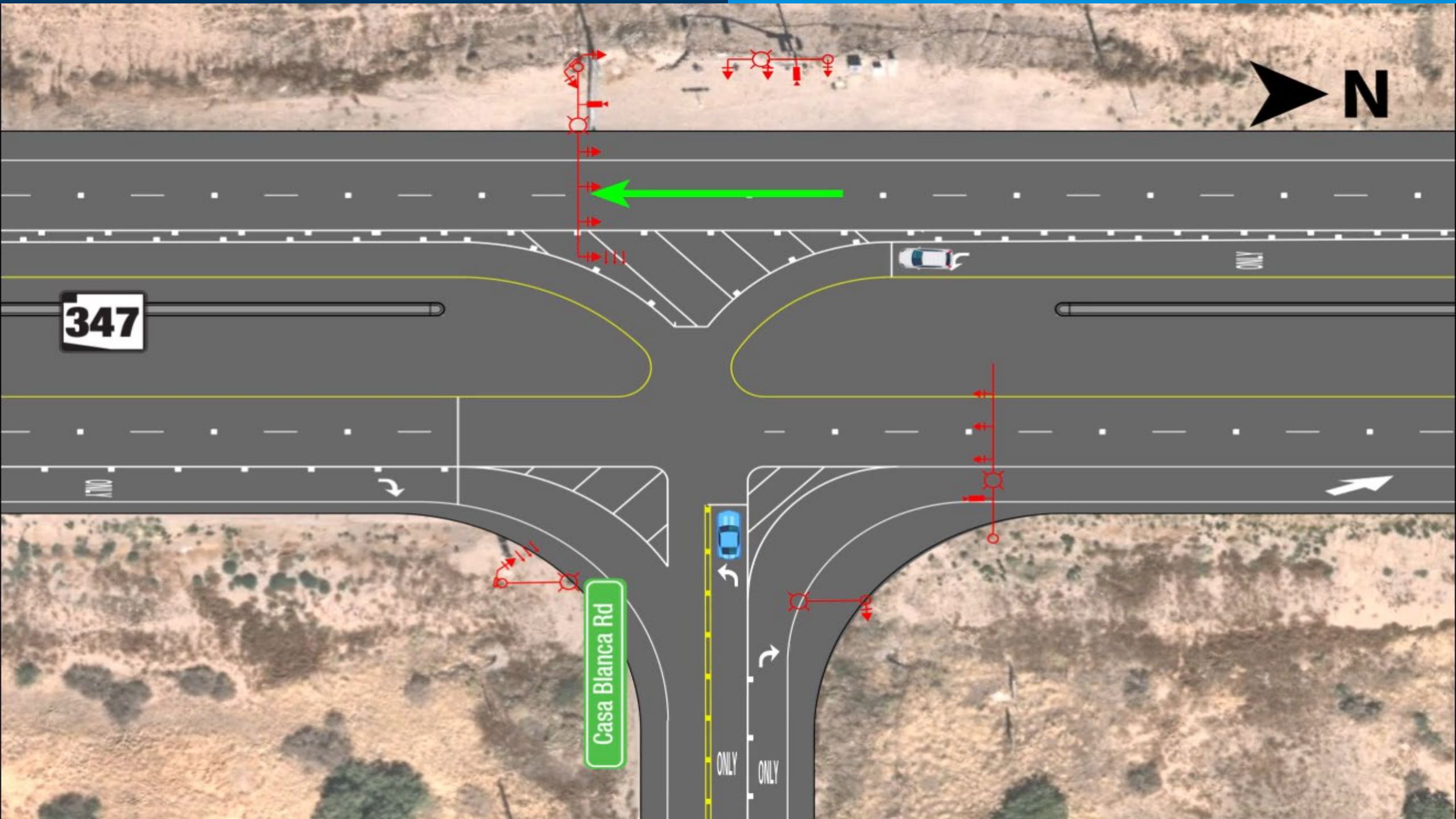
Casa Blanca Rd

Casa Blanca Road —
Alternative 1, Florida T



347

Casa Blanca Rd





347

Left-turn acceleration lane added
and separation buffer added

Santa Cruz
Wash Bridge

Through traffic doesn't stop

Lengthen turn lane

Lengthen turn lane

Free flow right turn

Casa Blanca Rd

Casa Blanca Road —
Alternative 1, Florida T



Southbound travel lane

347

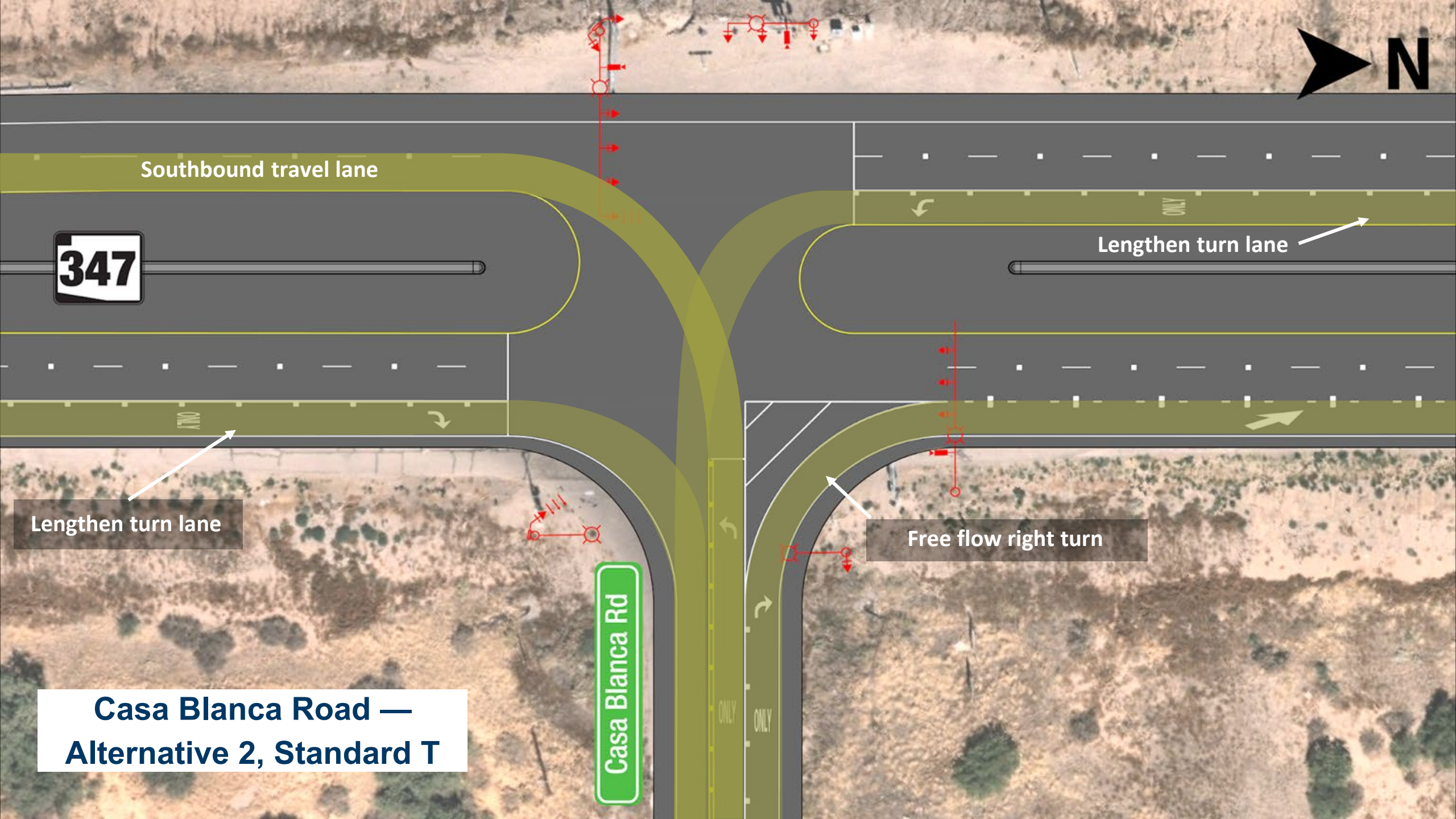
Lengthen turn lane

Lengthen turn lane

Free flow right turn

**Casa Blanca Road —
Alternative 2, Standard T**

Casa Blanca Rd





Santa Cruz
Wash Bridge

Lengthen turn lane

Lengthen turn lane

Free flow right turn

Casa Blanca Rd

Casa Blanca Road —
Alternative 2, Standard T

Casa Blanca Road Intersection

ADOT Preliminary Preferred Alternative

Florida T with separation buffer

- Reduces total intersection delay from 37 seconds to 8 seconds per vehicle compared to the Improved Standard T (144-second delay in 2050 if we do nothing)
- Allows free-flow southbound SR 347 traffic, improving signal timing options and travel time reliability
- Provides dedicated acceleration lane for Casa Blanca Road vehicles turning left onto SR 347, allowing a safer merge over Improved Standard T alternative (vehicles turn into the southbound lanes with the Improved Standard T rather than a dedicated lane)

SR 347 Intersections: Borgia Road



ADOT Preliminary Preferred Alternative:

Right-in/right-out only with no traffic signal





347

Add turn lane

Free flow right turn

**Borgia Road - Preliminary
Preferred Alternative –
Right-In Right-Out**

Borgia Rd

ONLY

Maricopa County Line
Pinal County Line

Mammoth Way
(Cement Plant Access Rd)

Gila River

SR 347 Intersections: Mammoth Way



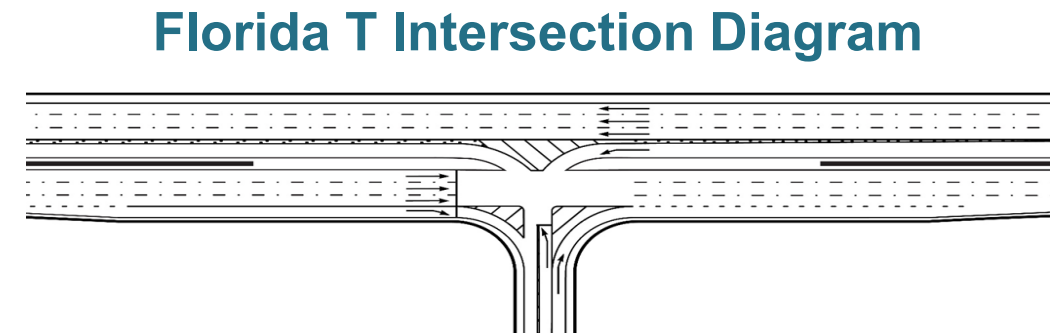
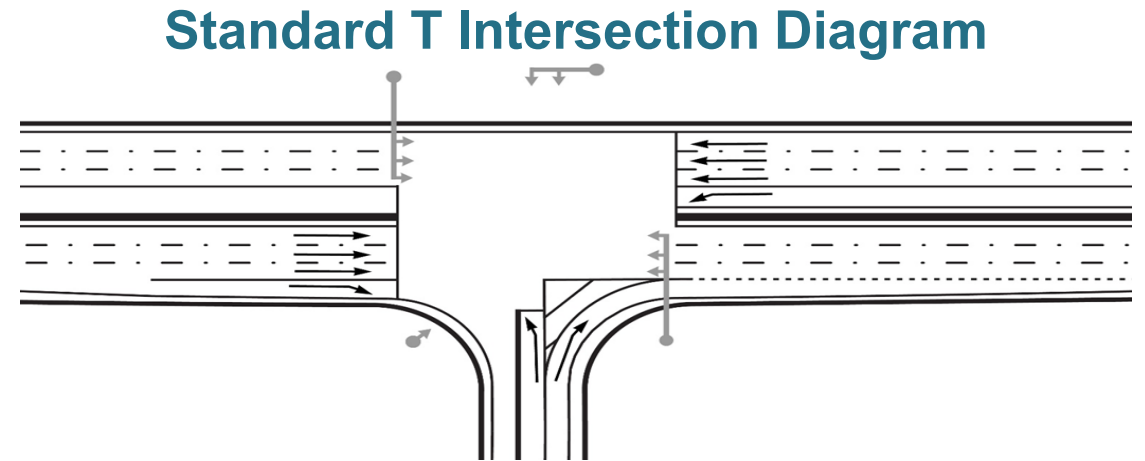
SR 347 Intersections: Mammoth Way

Existing Condition

- The intersection currently operates as a signalized Standard T intersection

Alternatives

- Improving the existing Standard T intersection
- Reconstructing the intersection as a Florida T intersection



ADOT Preliminary Preferred Alternative: Improved Standard T



347

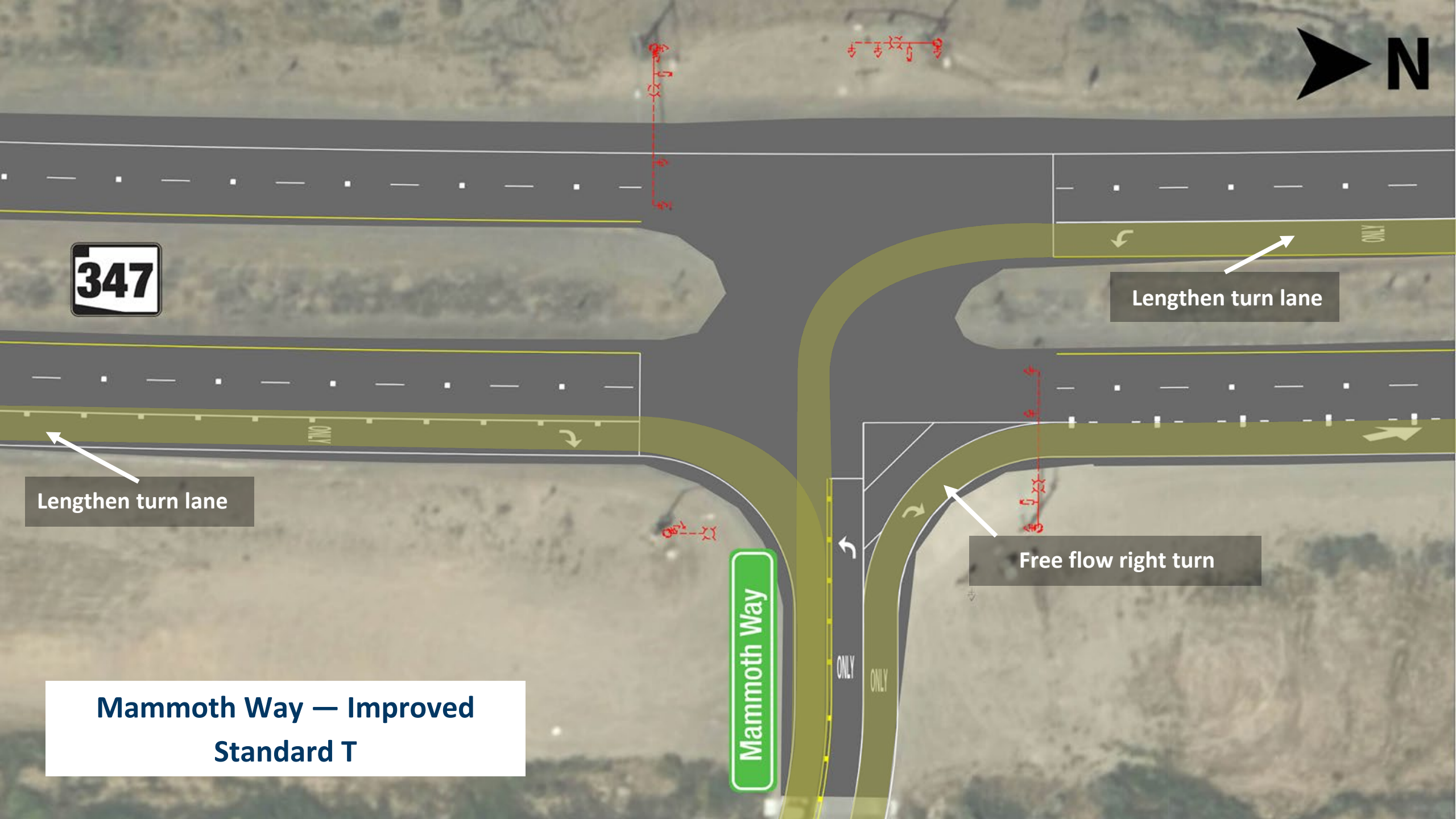
Lengthen turn lane

Lengthen turn lane

Free flow right turn

Mammoth Way — Improved
Standard T

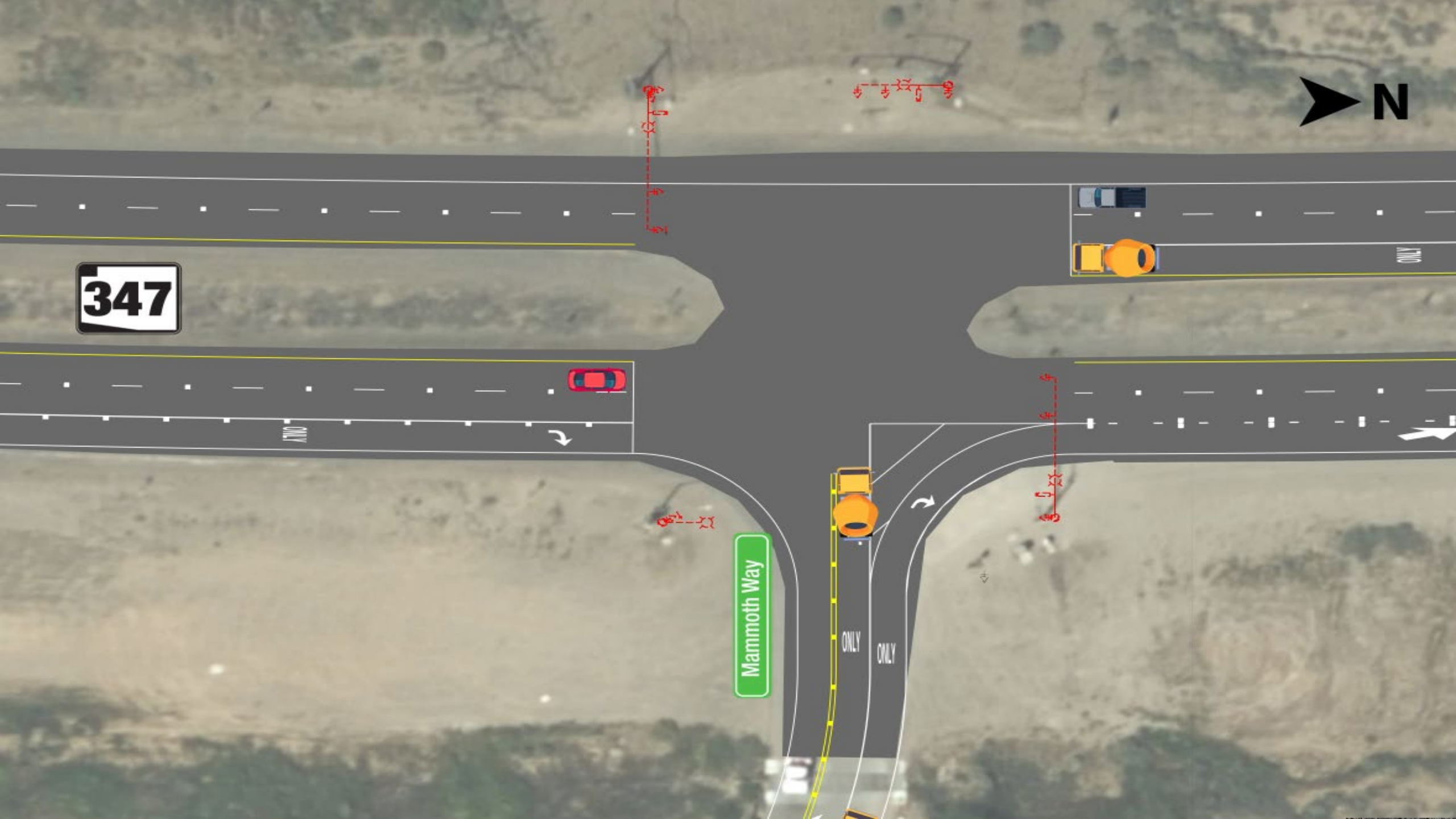
Mammoth Way





347

Mammoth Way





347

Possible West Access Point



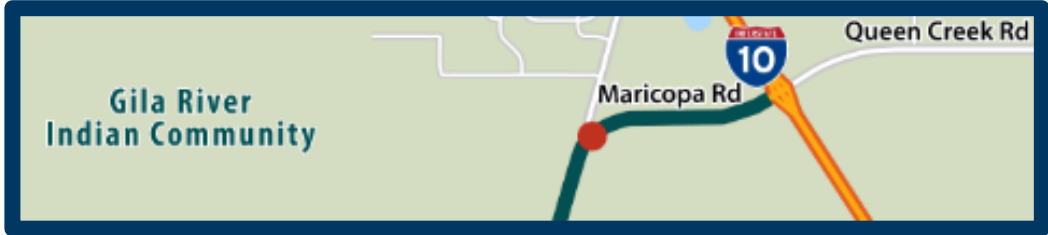
Lengthen turn lane

Lengthen turn lane

Free flow right turn

Mammoth Way

Mammoth Way, Preliminary Preferred Alternative — Improved Standard T



SR 347 Intersections: Maricopa Road



SR 347 Intersections; Maricopa Road

ADOT Preliminary Preferred Alternative

Existing Condition: Signalized Florida T

Maricopa Road: Improved Florida T with buffer

- Install dedicated eastbound left-turn lane
- Extend length of the existing southbound acceleration lane
- Provide northbound dual left-turn lanes
- Maintain buffer and lengthen acceleration lane between northbound merge lane and SR 347 through traffic



347

Maricopa Rd

Free flow right turn

Lengthen turn lane

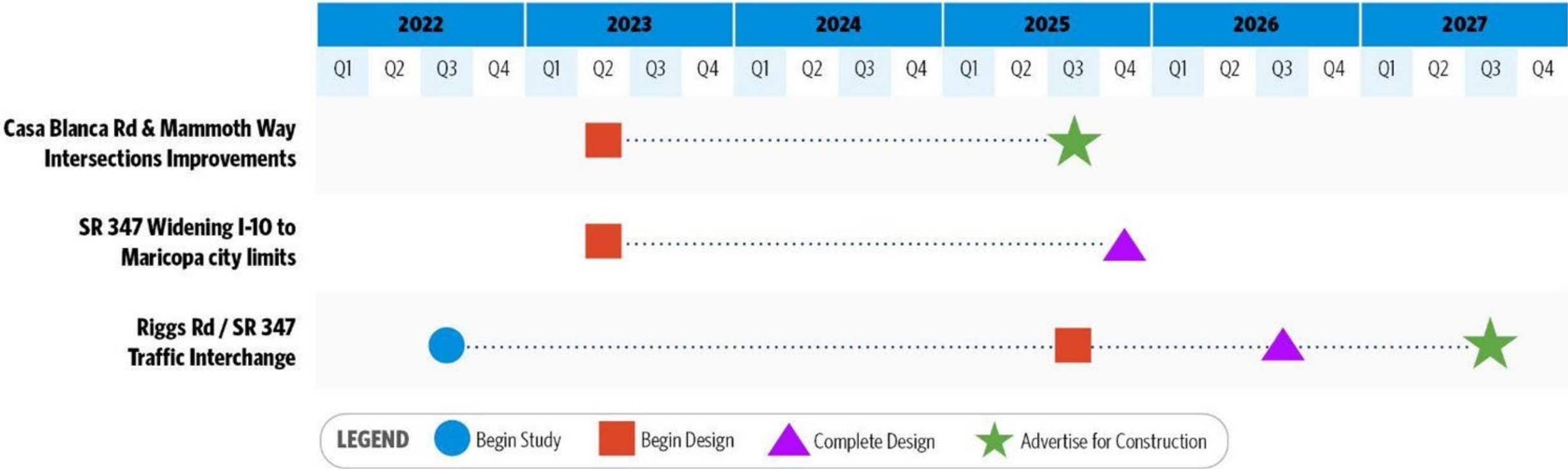
Add second left turn lane

Lengthen acceleration lane

Through traffic doesn't stop

Maricopa Road, Preliminary Preferred Alternative, Improved Florida T

Timeline





How to Comment

Comments are being accepted through Aug. 29, 2024, in the following ways:



Provide comments online: azdot.gov/SR347comment



Email: Kimberly Larson at KLarson@azdot.gov



Phone: 855.712.8530



Mail: ADOT Community Relations
1655 W. Jackson, MD 126F
Phoenix, AZ 85007





Questions/Comments?

