

## Interstate 10/Baseline Road Traffic Interchange Study

### The meeting will begin shortly.

While you wait, we invite you to complete a voluntary survey to help ADOT understand who attends its public meetings and how the department can improve participation.

<https://azdot.gov/i10BaselineSelf-id>



English

Mientras espera, lo invitamos a completar una encuesta voluntaria para ayudar a ADOT a comprender quiénes asisten a sus reuniones públicas y cómo podrá mejorar la participación de miembros de minorías. <https://azdot.gov/i10BaselineSelf-idSpanish>



Español

Para traducción a español utilice la función de interpretación de Zoom o para interpretación en vivo en español, llame al 866.730.7514 pin de participante 984619#

ARIZONA DEPARTMENT OF TRANSPORTATION

*Gael Luna reads this 10 min prior to the meeting and two more times before meeting starts to allow time for people to take self ID survey*

Good evening. The meeting will begin shortly.

While you wait, we invite you to complete a voluntary survey to help ADOT understand who attends its public meetings and how the department can improve participation. The survey is available by scanning the QR code on your screen, and the link is also being provided in the meeting chat.

Visit [azdot.gov/i10BaselineSelf-id](https://azdot.gov/i10BaselineSelf-id)

*Gael in Spanish:*

Con su participación en esta encuesta voluntaria, ADOT podrá determinar quien participa en las reuniones públicas y como podrá mejorar la participación de miembros de minorías. La encuesta también le ayudará a ADOT a cumplir con requisitos federales. También hemos colocado un enlace a la encuesta en el chat

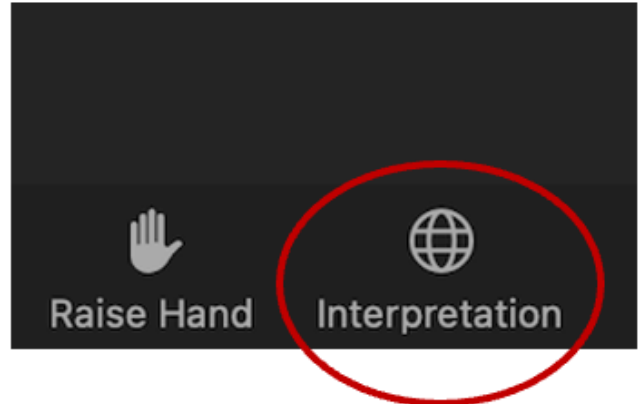
Espanol: [azdot.gov/i10BaselineSelf-idSpanish](https://azdot.gov/i10BaselineSelf-idSpanish)

## Spanish Interpretation

- Spanish call-in number: 866.730.7514
- Pin: 984619#
- Zoom interpretation feature

## Interpretación al español

- Por teléfono: 866.730.7514  
(español)
- Pin de participante: 984619#
- Función de interpretación de Zoom



ARIZONA DEPARTMENT OF TRANSPORTATION

*Gael Luna:*

*To be read at 6:00 at the start of the meeting*

*Information read in both languages for how to participate and hear the presentation in Spanish. The same information will be included in the chat feature.*

This meeting will be presented in English and interpreted in Spanish through a separate call-in number and online language channel. If you would like to hear the presentation in Spanish by phone, please call 866-730-7514. The PIN number to enter is 984619 followed by the pound sign. If you are online you can click on the Interpretation symbol at the bottom of your screen as shown on this slide to hear the meeting presented simultaneously in Spanish.

Once this slide is completed you will see the interpretation button on your screen as shown here. To listen to this meeting in Spanish through the online meeting, click the interpretation icon in your meeting/webinar controls then click Spanish. If you would like to hear Spanish only, click "Mute Original Audio"

Esta reunión se presentará en inglés e interpretada en español a través de un número de teléfono separado y por un canal de idiomas en línea. Si desea escuchar la presentación en español por teléfono, por favor llame al 866-730-7514. El número PIN a ingresar es 984619 seguido por la almohadilla. Si está en línea, presione el símbolo de Interpretación en la parte inferior de la pantalla, como se muestra en esta diapositiva, para escuchar la reunión presentada simultáneamente en español.

Una vez completada esta diapositiva, verá el botón de interpretación en su pantalla, como se muestra aquí. Para escuchar esta reunión en español a través de la reunión en línea, presione el ícono de interpretación en los controles de la reunión/seminario web y, a continuación, presione español. Si desea escuchar solo en español, presione "Silenciar audio original"

Habrà una breve pausa mientras permitimos que los

participantes se unan a la sala de interpretación en español.

There will be a short pause while we allow participants to join the Spanish interpretation room.



*Gael:*

Good evening, everyone and welcome to the public meeting for the Interstate 10/Baseline Road Traffic Interchange Study.

My name is Gael Luna, Community Relations Project Manager with the Arizona Department of Transportation.

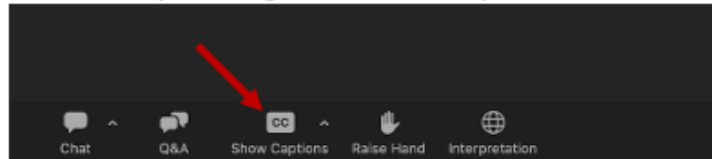
*[The spoken script for this and all subsequent slides will be simultaneously interpreted in Spanish, except for Slide #6, which will be read in Spanish only after a prompt from Gael]*

## **I-10/Baseline Road Traffic Interchange Study**

- All participants have been muted to avoid background noise.
- Following the meeting presentation, we will take questions and comments online and by phone.

Instructions will be provided.

- To turn on closed captioning, select that option from the menu.



ARIZONA DEPARTMENT OF TRANSPORTATION

Gael: Before we get started, a few housekeeping items. Participants joining us are currently muted. I'll describe the meeting format and how to participate in just a moment, but first, if you are having any technical issues right now, you may need to hang up or log off, then redial or reconnect.

Please note this meeting is being recorded. The recording will be posted to the project website.

If you would like to turn on closed captioning, click Closed Caption on the bottom of your screen to

start viewing closed captioning. Click Live Transcript, then select Show Subtitle.

Tonight's format is a short presentation followed by an open question-and-answer session. After the presentation, we'll provide instructions on how to ask a question or comment by phone or online. If you would like, you can submit written questions at anytime during the presentation using the Q&A function, which is located at the bottom of your screen and shown on this slide. Keep in mind that after tonight's meeting, you will have the opportunity to ask further questions or provide additional comments through August 22. We'll tell you how to do that at the end of the meeting.





## **ADOT'S NONDISCRIMINATION NOTICE TO THE PUBLIC**

The Arizona Department of Transportation (ADOT) hereby gives public notice that it is the Agency's policy to assure full compliance with Title VI of the Civil Rights Act of 1964, Title II of the Americans with Disabilities Act of 1990 (ADA), and other related authorities in all of its programs and activities.

ADOT's Title VI and ADA Programs require that no person shall, on the grounds of race, color, national origin, or disability, be excluded from participation in, be denied the benefits of, or be otherwise subjected to discrimination under any program or activity.

Any person who believes his/her Title VI or ADA rights have been violated, may file a complaint. Any such complaint must be in writing and filed with the ADOT Civil Rights Office within one hundred eighty (180) days following the date of the alleged discriminatory occurrence. For additional information about ADOT's Civil Rights programs and the procedures to file a complaint, contact ADOT Civil Rights Office via the information listed below:

**ADOT Civil Rights Office**  
206 S. 17th Avenue, Mail Drop 155-A  
Phoenix, AZ 85007  
602.712.8946 FAX 602.239.6257  
CivilRightsOffice@azdot.gov

**Danielle Valentine**  
Title VI Program Coordinator  
DValentine@azdot.gov

ARIZONA DEPARTMENT OF TRANSPORTATION

*Note: Read script in English only. This script and all those following will be repeated simultaneously in Spanish on the call-in Spanish language phone line and also through the Zoom Webinar's simultaneous interpretation feature.*

**Gael:**

ADOT complies with Title VI of the Civil Rights Act of 1964, Title II of the Americans with Disabilities Act of 1990, and other related authorities in all of its programs and activities.

Any person, who believes his/her Title VI or ADA rights have been violated, may file a complaint by

contacting the ADOT Civil Rights Office at 602-712-8946 or by email at [civilrightsoffice@azdot.gov](mailto:civilrightsoffice@azdot.gov) within 180 days of the alleged violation.

## **AVISO PÚBLICO DE LA LEY DE NO-DISCRIMINACIÓN DE ADOT**

El Departamento de Transporte del Estado de Arizona (ADOT) informa al público que la agencia tiene como regla asegurar el cumplimiento de el Título VI de la Ley de los Derechos Civiles de 1964, del Título II de la Ley de Estadounidenses con Discapacidades de 1990 (ADA) y otras normas relacionadas con todos sus programas y actividades.

Los programas del Título VI y ADA de ADOT exigen que a ninguna persona se le excluya de participar, se le nieguen beneficios o de ninguna otra manera sea sujeta a discriminación en ningún programa o actividad de ADOT por motivo de raza, color, país de origen, o discapacidad.

Cualquier persona que crea que se han violado sus derechos bajo el Título VI o el ADA, puede presentar una queja. Esta queja debe presentarse por escrito a la Oficina de Derechos Civiles de ADOT dentro de ciento ochenta (180) días a partir de la fecha en que se alega que ocurrió la discriminación. Para recibir más información sobre los programas de Derechos Civiles de ADOT y los procedimientos para presentar una queja, por favor póngase en contacto con la Oficina de Derechos Civiles de ADOT con la información que aparece abajo:

**ADOT Civil Rights Office**

**206 S. 17th Avenue, Mail Drop 155-A  
Phoenix, AZ 85007  
602.712.8946 FAX 602.239.6257**

**Danielle Valentine**

**Title VI Program Coordinator  
DValentine@azdot.gov**

ARIZONA DEPARTMENT OF TRANSPORTATION

*Gael:*

We will have a brief pause to allow individuals to read this information in Spanish while it is described on the Spanish channel.

*Interpreter (Carmen) in the simultaneous Spanish channel:*

ADOT tiene como regla asegurar el cumplimiento total del Título VI de la Ley de los Derechos Civiles de 1964, del Título II de la Ley de Estadounidenses con Discapacidades de 1990 (ADA) y otras normas relacionadas con todos sus programas y actividades.

Cualquier persona que crea que se han violado sus derechos bajo el Título VI o el ADA, puede presentar una queja. Por favor póngase en contacto con la Oficina de Derechos Civiles de ADOT a 602.712.8946 o [civilrightsoffice@azdot.gov](mailto:civilrightsoffice@azdot.gov).

## Auxiliary Aids and Services

In compliance with Title II of the Americans with Disabilities Act (ADA) and Section 504 of the Rehabilitation Act of 1973, the Arizona Department of Transportation (ADOT) does not discriminate against qualified individuals with disabilities on the basis of disability in its programs, services or activities.

ADOT will make reasonable modifications to ensure that individuals with disabilities have an equal opportunity to enjoy ADOT's programs, services and activities.

If you require an accommodation, please notify an ADOT staff member.

For additional information or questions about ADOT's External ADA Program, please contact the Civil Rights Office at 602.712.8946.

ARIZONA DEPARTMENT OF TRANSPORTATION

*Gael:*

ADOT will make reasonable accommodations to ensure that individuals with disabilities have an equal opportunity to enjoy ADOT's programs, services, and activities.

If you require an accommodation, please contact Gael Luna at 480.604.4785 or [gluna2@azdot.gov](mailto:gluna2@azdot.gov)

*[The spoken script for this and all subsequent slides will be simultaneously interpreted in Spanish]*

## **Purpose of Tonight's Meeting**

- Provide overview of alternatives being considered
- Provide opportunity for comments/questions

*Gael:*

Thank you again for joining us for the I-10/Baseline Road Traffic Interchange Study public meeting.

The purpose of this meeting is to provide an overview of the interchange design alternatives currently being considered to improve traffic flow and safety.

We will also give an update on the study schedule, and provide an opportunity for questions and feedback, as well as outline the various ways to provide comments during this phase of the study.

Now, I will hand the presentation off to Mark Gilliland, the Project Manager from Aztec Engineering.



*Mark:*

Thank you, Gael, for the introduction.

The I-10/Baseline Road traffic interchange study looked at Baseline Road from 48th Street at the west end and Hardy Drive at the east. The maximum construction limits along Baseline Road are anticipated to be between Calle Los Cerros Drive and Priest Drive. Within these limits Baseline Road touches four jurisdictions: the cities of Phoenix and Tempe, the Town of Guadalupe, and ADOT.



## Study Purpose & Need

- Reduce traffic congestion
- Improve traffic flow through the study corridor
- Reduce crashes
- Accommodate pedestrian and bicycle traffic, safety and connectivity concerns
- Develop design alternatives and recommend an alternative for final design



ARIZONA DEPARTMENT OF TRANSPORTATION

### *Mark:*

Baseline Road at Interstate 10 is a major arterial road serving approximately 55,000 vehicles per day and experiences heavy congestion and delays. There are several intersections and numerous driveways along the corridor serving adjacent commercial and residential properties, which contributes to congestion and crashes.

The corridor has a higher rate of crashes compared to the regional average. Additionally, the corridor has heavy pedestrian and bicycle traffic, with connectivity and safety challenges, including pedestrian facilities that do not meet

current standards, intersections without marked crosswalks on all sides and lack of dedicated bike lanes.

Due to these issues, the current infrastructure and interchange design may no longer be adequate to meet the needs of the diverse traveling public.

The study is evaluating design alternatives to improve the interchange and address these issues.

At the conclusion of the study, ADOT will select a preferred alternative for further action.

## Study Process

### Completed Steps:

- Public and agency scoping process
- Data collection and traffic modeling

### Current/Upcoming Steps:

- Develop and refine potential alternatives
  - Engineering and environmental analysis
  - Right-of-way and cost estimates
- Obtain public input
- Identify preferred alternative and prepare final Design Concept Report (DCR) and environmental documents

ARIZONA DEPARTMENT OF TRANSPORTATION

### *Mark:*

The study started in early 2023 and is following an established engineering, environmental and public input process.

The study includes the development of an engineering design concept report and environmental document, which evaluates any environmental impacts of the alternatives and mitigation measures.

The study team conducted public outreach in 2023 to gather community concerns, priorities and input. This included a public meeting and public survey

conducted in May 2023, as well as a website and extensive public notification.

The team also collected data such as field surveys and traffic counts and performed traffic modeling to determine future traffic flows with and without improvements.

We are developing and evaluating design alternatives for the interchange improvements, including initial engineering, environmental, right of way and projected costs for the interchange improvements.

We worked in close collaboration with our project partners, including MAG, the cities of Tempe and Phoenix, the town of Guadalupe and the Federal Highway Administration, to develop two possible interchange design alternatives.

This second public meeting is being held to present these build design alternatives for your input. We will also be presenting information on the no build, or do nothing alternative, as a comparison.

Following public and local jurisdiction input on the

alternatives, the team will select a preferred alternative and prepare a final Design Concept Report and associated environmental documents.

## Study Elements

The study includes an engineering DCR that evaluates:

- No-Build, Modified Diamond Interchange (MDI), and Diverging Diamond Interchange (DDI) alternatives
- Consolidating driveway access on Baseline Road
- Reducing the number of signalized intersections near the interchange
- Improving bicycle and pedestrian operations along Baseline Road

ARIZONA DEPARTMENT OF TRANSPORTATION

### *Mark:*

The Design Concept Report is developing, evaluating and comparing preliminary design alternatives, which includes the following items:

- Modifying the existing diamond interchange to a Modified Diamond Interchange (MDI) or converting the existing interchange to a Diverging Diamond Interchange (DDI)
- Reducing the number of driveways on Baseline Road to allow for better traffic flow
- Reducing the number of signalized intersections in close proximity to the interchange, and
- Improving pedestrian and bicycle operations

along Baseline Road by widening and upgrading sidewalks to current ADA standards

This evaluation includes an engineering and environmental analysis. It's important to note that this study will only identify potential right-of-way impacts and access changes. If a Build alternative is selected, and once ADOT receives environmental approval, final design will begin and then ADOT will identify specific right-of-way needs and the right-of-way acquisition process can begin.

## Environmental Considerations

- Document potential impacts to social, economic and natural environments
  - Socio-Economic (Environmental Justice/Title VI)
  - Air Quality
  - Noise
  - Section 4(f)
  - Historic Properties
  - Land Use
  - Biology
  - Cultural Resources
  - Hazardous Materials
- Document public and agency outreach

The environmental review, consultation, and other actions required by applicable Federal environmental laws for this are being, or have been, carried out by ADOT pursuant to 23 U.S.C. 327 and a Memorandum of Understanding dated 06/25/2024, and executed by FHWA and ADOT.

ARIZONA DEPARTMENT OF TRANSPORTATION

### *Mark:*

The study team will evaluate the environmental conditions in compliance with environmental regulations such as the National Environmental Policy Act (NEPA) and the Clean Air Act. This process will document potential impacts to social, economic, and natural environments, including:

- Socio-Economic (Environmental Justice/Title VI)
- Air Quality
- Land Use
- Noise



- Biology
- Section 4(f)
- Cultural Resources
- Historic Properties
- Hazardous Materials

The team will also document public and agency outreach for the project record.

## No Build Scenario

- No improvements to the existing interchange or to Baseline Road
- Existing roadways and traffic signals remain unaltered



ARIZONA DEPARTMENT OF TRANSPORTATION

### *Mark:*

The No Build scenario would not make any improvements to the existing interchange or to Baseline Road. The existing roadways and traffic signals would remain unaltered. This scenario would not improve traffic congestion, safety, or bicycle and pedestrian facilities.

## Modified Diamond Interchange (MDI) Alternative

- Keeps the interchange and ramp configuration as they are
- Adds right turn lanes on Baseline Road and I-10 on- and off-ramps to improve traffic operations



ARIZONA DEPARTMENT OF TRANSPORTATION

### *Mark:*

The Modified Diamond Interchange alternative would keep the interchange and ramp configuration as they are, while adding some modifications to improve traffic operations.

This includes adding a new eastbound right turn lane and extending the existing right turn lane on Baseline Road at I-10, and additional lanes on the exit and entrance ramps.

## Modified Diamond Interchange (MDI) Alternative



### *Mark:*

The MDI Alternative is depicted in this exhibit. The improvements are shown in a heavier black line. The limits of construction along Baseline Road are from Arizona Grand Parkway to just east of the interchange.

## Modified Diamond Interchange (MDI) Alternative



### *Mark:*

This exhibit depicts the additional eastbound right turn lanes and receiving lanes on the eastbound I-10 on-ramp. This is a very heavy traffic movement and the additional lanes allow more turning vehicles to store in the turn lanes and not impede Baseline Road through traffic.



## Modified Diamond Interchange (MDI) Alternative



### *Mark:*

The number of through lanes on Baseline Road will remain the same, but removing more turning traffic from the through lanes will increase the number of vehicles served per signal cycle and will improve travel times along this corridor.

## Modified Diamond Interchange (MDI) Alternative

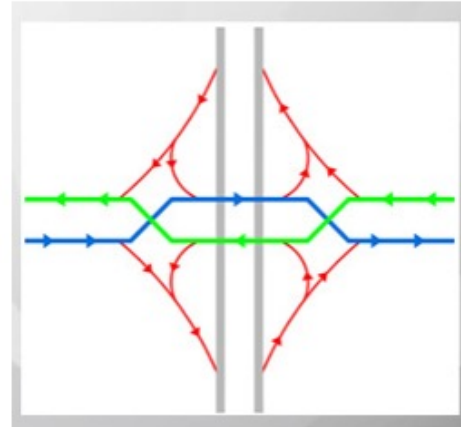


### *Mark:*

This alternative also includes the removal of the traffic signal at Wendler Drive and revises the access to be right-in, right-out. This will improve the flow of traffic on Baseline Road by reducing conflict points and extending the available queue area approaching I-10.

## Diverging Diamond Interchange (DDI) Alternative

- Converts the interchange into a new configuration
- Allows through and left-turning traffic to proceed simultaneously



ARIZONA DEPARTMENT OF TRANSPORTATION

### *Mark:*

The second build alternative being considered is the Diverging Diamond Interchange. The DDI is a relatively new type of interchange that provides efficient traffic movements and reduces conflict points between traffic movements to improve safety.

A DDI increases traffic flow by temporarily transitioning traffic to the left side of the road, allowing through-traffic and left-turning traffic to proceed through the interchange simultaneously, eliminating the need for a signalized left-turn.



## Diverging Diamond Interchange (DDI) Alternative



### *Mark:*

The DDI Alternative is depicted in this exhibit. Like the MDI, the DDI improvements are shown in a heavier black line. The limits of construction along Baseline Road are from Calle Los Cerros Drive to Priest Drive.

## Diverging Diamond Interchange (DDI) Alternative



### *Mark:*

Again, the DDI would increase traffic flow by traffic temporarily transitioning to the left side of the road, allowing through-traffic and left-turning traffic to proceed through the interchange simultaneously, eliminating the need for a signalized left-turn. DDIs are particularly effective at locations that have high volumes of left-turn traffic on and off of freeway ramps and left-turn related safety challenges.

## Diverging Diamond Interchange (DDI) Alternative



### *Mark:*

This alternative also includes the removal of the traffic signal at Wendler Drive and revises Wendler access to be right-in, right-out. This will improve the flow of traffic on Baseline Road by reducing conflict points and extending the available queue area approaching I-10.

## **Modified Diamond Interchange (MDI) Alternative**

### **Pros & Cons**

#### **Pros**

- Driver and pedestrian familiarity
- Improves bicycle and pedestrian facilities
- Improves safety by reducing conflict points
- Fewer impacts to existing facilities (.45 acres of right of way)
- Least expensive (Estimated cost of \$16.1 million)

#### **Cons**

- Fewer benefits to traffic operations and safety
- Change in some business access from Baseline Road

ARIZONA DEPARTMENT OF TRANSPORTATION

#### *Mark:*

Next, I'd like to point out the pros and cons of each build alternative. Some of the pros associated with the MDI Alternative are as follows:

- Drivers and pedestrians are already familiar with this configuration
- Improvements to pedestrian and bicycle facilities by widening and upgrading sidewalks to current ADA standards
- Reduced conflict points and improved safety on Baseline Road
- Fewer impacts to existing utilities, right of way and businesses
- Least expensive and shortest construction

duration of the build alternatives being evaluated

Some of the cons associated with the MDI Alternative are as follows:

- Fewer benefits to traffic operations and safety compared to the DDI alternative
- Reduction in access to Aunt Chilada's and Denny's properties from Baseline Road



## **Diverging Diamond Interchange (DDI) Alternative Pros & Cons**

### **Pros**

- Improved traffic operations and safety
- Reduces conflict points between traffic
- Signal operation further decreases travel time

### **Cons**

- More impacts to existing facilities (2.29 acres of right of way)
- Requires bicyclists and pedestrians to cross into median
- Challenges to I-10 incident management
- Most expensive of the build alternatives (Estimated cost of \$40.8 million)

ARIZONA DEPARTMENT OF TRANSPORTATION

### *Mark:*

Some of the pros associated with the DDI Alternative are as follows:

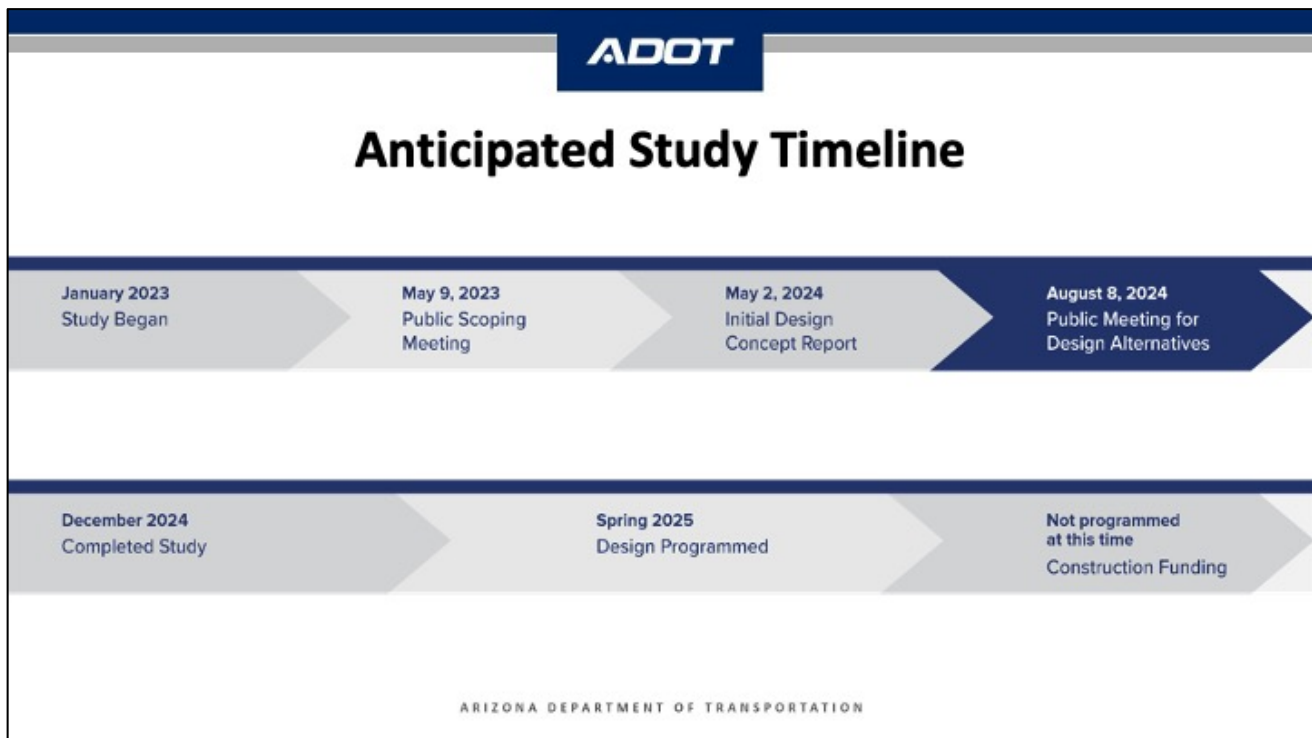
- Improved traffic operations and safety
- Reduces conflict points, especially for the high volume left turn movements
- Simpler signal operation allows more time to be allocated to Baseline Road through movements, decreasing corridor travel time

Some of the cons associated with the DDI Alternative are as follows:

- More impacts to existing utilities, right of way and businesses than the MDI, including a full

take of the parcel on the southeast corner of the interchange

- Requires bicyclists and pedestrians to cross into the Baseline Road median
- Reduces I-10 incident management by eliminating through movements on the ramps
- High right-of-way and construction cost and will take the longest to construct



*Mark:*

This graphic shows the anticipated study schedule, moving from left to right:

- Study Began in January 2023
- ADOT held a Public Scoping Meeting on May 9, 2023
- The Initial Design Concept Report was submitted on May 2, 2024
- We are here tonight at the Public Meeting for Design Alternatives
- The study is anticipated to be completed in December 2024 with design programmed in Spring 2025



- Funding for construction is not currently programmed

Now I'll turn it back over to Gael.

## More Information and Mailing List

- Visit project website:  
[azdot.gov/i10baseline](http://azdot.gov/i10baseline)
- View presentation
- Sign up for project mailing list to be notified of updates at  
[azdot.gov/i10baseline](http://azdot.gov/i10baseline)



*Gael:*

Thank you, Mark!

For more information on the study, you can visit the project website at: [azdot.gov/i10baseline](http://azdot.gov/i10baseline)

We encourage you to visit the website to sign up for the project mailing list.

## Comments

How to provide comments through Aug. 22, 2024:

- Tonight's meeting
- Online Survey: [tinyurl.com/i10baselinecomment](https://tinyurl.com/i10baselinecomment)
- Email: [projects@azdot.gov](mailto:projects@azdot.gov)
- Phone: 855.712.8530
- Mail: ADOT Community Relations  
1655 West Jackson, MD 126F  
Phoenix, AZ 85007



ARIZONA DEPARTMENT OF TRANSPORTATION

*Gael:*

Your input is important, and we appreciate you taking the time to learn more about the study and provide your feedback. ADOT is accepting comments on the alternatives through August 22 in the following ways:

- During this meeting, which I will cover in just a moment
- You can complete the online comment form by scanning the QR code on the screen or clicking the link in the chat box
- You can send an email to [projects@azdot.gov](mailto:projects@azdot.gov)
- You can call 855-712-8530

- And you can visit the project website at [azdot.gov/i10baseline](http://azdot.gov/i10baseline)

You can submit questions through the online comment form at

[tinyurl.com/i10baselinecomment](http://tinyurl.com/i10baselinecomment)

[nt,](http://tinyurl.com/i10baselinecomment) or you can mail your comments to: ADOT  
Community Relations, 1655 West Jackson, MD  
126F, Phoenix, AZ 85007

## Questions and Comments

- We will take questions and comments in the order received.
- Due to time constraints:
  - Please limit verbal questions to 30 seconds.
  - We may consolidate similar comments and questions.
  - Limit of one question per person until all have had opportunity.

ARIZONA DEPARTMENT OF TRANSPORTATION

*Gael: (Live)*

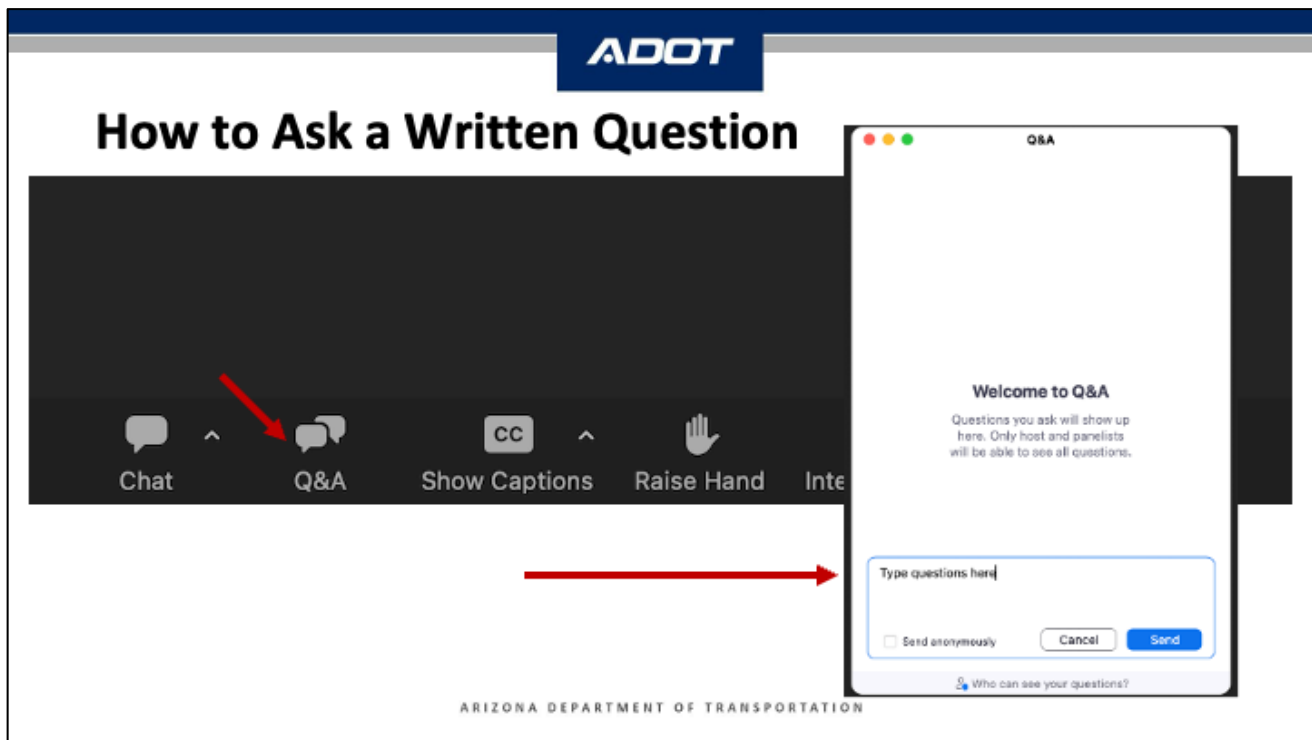
Now we'll begin the question and comment portion of the meeting.

We will be taking questions and comments in the order that they are received.

Due to time constraints and to allow others time to comment:

- Please limit verbal questions to no more than 30 seconds.
- We may combine similar questions or comments.
- and we ask that you limit yourself to one

question until everyone has had an opportunity to ask their question or make their comment.

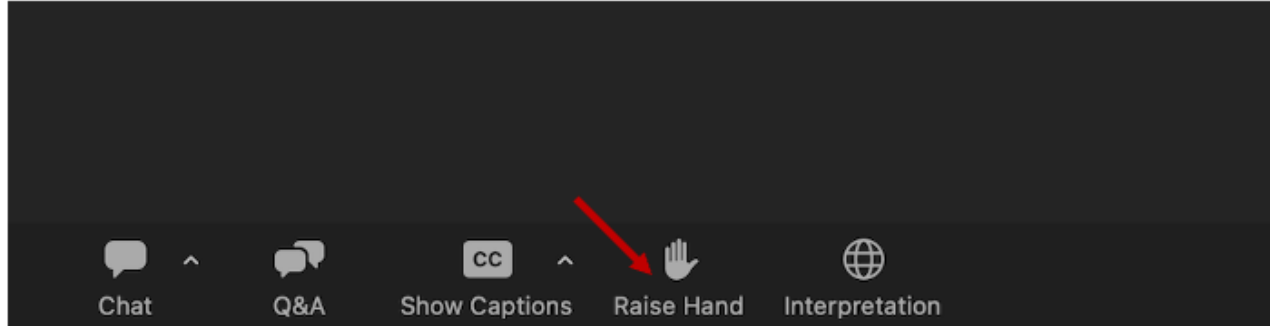


*Gael:*

If you are participating in the online meeting, you can submit a written question or comment using the **Q&A function**.

For our Spanish speakers, when you provide a question or comment in Spanish using the Q&A function, a Spanish-speaking project team member will translate it, and you will hear the response to questions in the Zoom Spanish language channel and Spanish call-in line.

## How to Ask a Verbal Question



For those on the phone:

- Press \*9 to raise your hand.
- When prompted, enter \*6 to be temporarily unmuted.

ARIZONA DEPARTMENT OF TRANSPORTATION

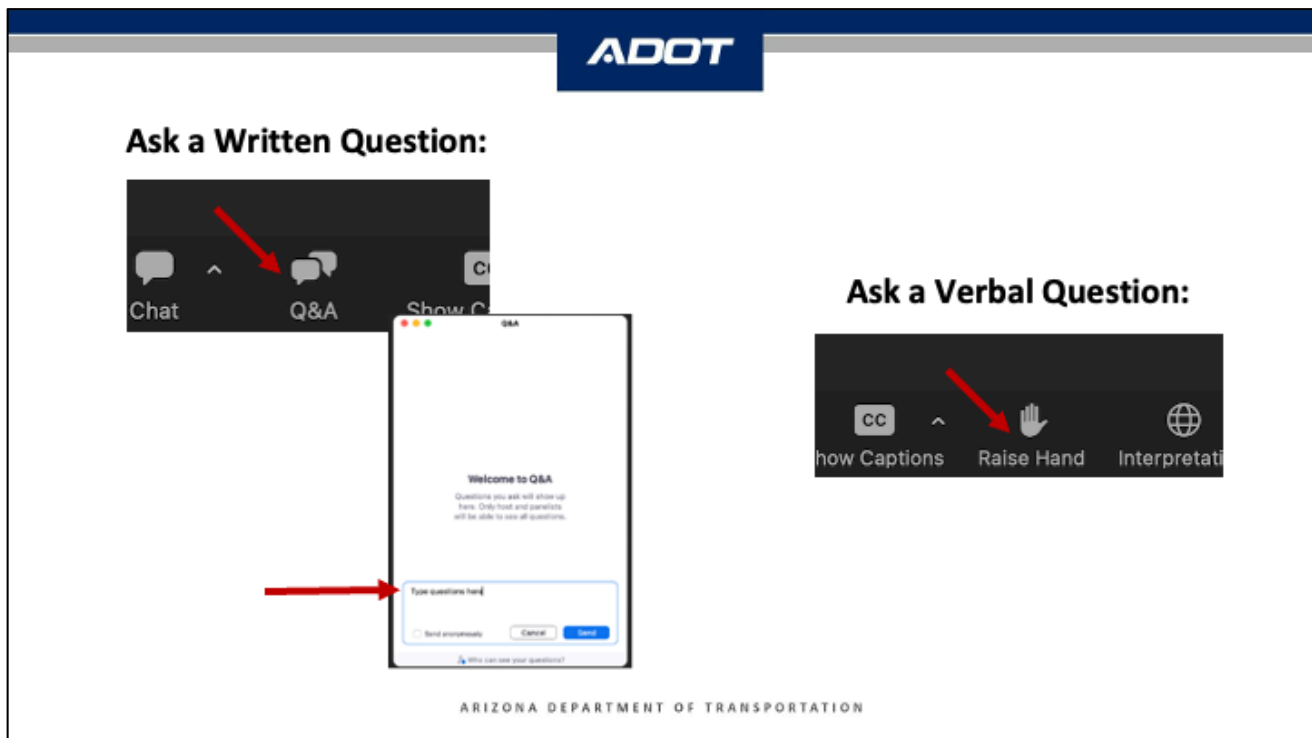
*Gael:*

The second way to participate, if you are joining the meeting online, is to raise your hand by clicking on the Raise Hand icon at the bottom of your screen. When you raise your hand, the presenter will unmute you and call on you when it is your time to speak so you can be heard. Those who ask a question in Spanish will have it repeated in English by our interpreter and hear the response interpreted in Spanish.

For attendees joining us on the phone, please enter star 9 to indicate you would like to speak and we will receive the hand raised signal. When we are ready



for your question/comment, our host will ask you to unmute yourself by pressing star 6. At this time, I would like to introduce Tom Baca.



*Tom:*

Thank you, Gael. Good evening. I'm Tom Baca, a member of the project's outreach team. I'll be helping take your questions and comments this evening. Just as a reminder, in order to cover as many questions as possible, we may be paraphrasing and consolidating similar questions so that we can cover more topics and information. We may not have time to get to all of them but will provide answers in the meeting summary that will be added to the project website. We already have a few entered in the Q&A so we'll start with those and then go to anyone with a hand raised online and then on the phone. *(Begin reading questions.)*

#

Just as a reminder, if you're online and want to ask a question or make a comment verbally, just click on the Raise Hand icon at the bottom of your screen. If you are on the phone, press \*9 to raise your hand. I'll call on you when we're ready for your question or comment and let you know to unmute yourself by pressing \*6.

If you're on the Spanish language phone line just state your question and our interpreter will relay your question to our panelists.

#

Now I see we have someone on the phone with their hand raised with the last four digits of their phone number being XXXX. You can unmute yourself now by pressing \*6 and share your question or comment.

#

We're at 7:00 when the meeting was scheduled to close. However, we still have a few questions to take so we'll keep going until about 7:15 to get more in.

It's time to close the meeting. We do have a few questions we'll not have time to answer in the meeting tonight but will respond to in writing and add to the meeting summary.

Thank you for participating in tonight's public meeting and for sharing your questions and comments with ADOT and the project team.

Now back to Gael to close the meeting.

## Thank you for attending.

- For more information about the project, to make a comment or to sign up for the mailing list, visit [azdot.gov/i10baseline](https://azdot.gov/i10baseline)
- You may also call 855.712.8530 for questions and comments.
- Reminder: Take our Self-ID Survey to assist us with federal reporting.
  - English: [azdot.gov/I10BaselineSelf-id](https://azdot.gov/I10BaselineSelf-id)
  - Spanish: [azdot.gov/I10baselineSelf-IdSpanish](https://azdot.gov/I10baselineSelf-IdSpanish)



English



Español

ARIZONA DEPARTMENT OF TRANSPORTATION

*Gael (live):*

Before we close, I'd like to remind you that this presentation was recorded and will be posted to the project website.

We would like to encourage you to visit the website for more information and to sign up for the mailing list. We have posted the website link in the chat for your convenience.

Comments will be accepted until August 22. A link to the comment form is also available in the chat. The web address is [tinyurl.com/i10baselinecomment](https://tinyurl.com/i10baselinecomment)

If you have any follow-up questions or comments, please use the comment form or contact me at [projects@azdot.gov](mailto:projects@azdot.gov)

Also, if you have not already done so, please take the Anonymous Self-ID Survey. We have placed the link to the survey in the chat as well.

Thank you very much for your interest in the project and your participation.