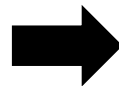


# Anonymous Self-ID Survey

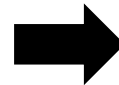
- While you wait, we invite you to complete a voluntary survey to help ADOT understand who attends its public meetings and how the department can improve participation.

**English:** <https://forms.gle/oQfz4f1FYY5pW6HP9>



- Mientras espera, lo invitamos a completar una encuesta voluntaria para ayudar a ADOT a comprender quiénes asisten a sus reuniones públicas y como podrá mejorar la participación de miembros de minorías.

**Espanol:** <https://forms.gle/LMD5ABSw9uUvRsEt7>



# I-10/Koli Road Traffic Interchange Study

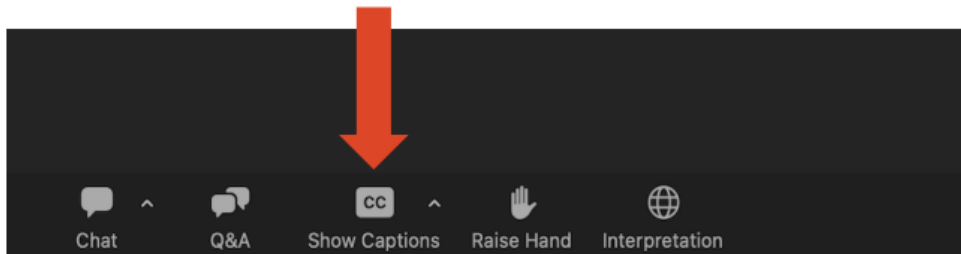
## Scoping and Alternatives Public Meeting

**Oct. 8, 2024**  
**Virtual Meeting**



## Welcome to the I-10/Koli Road Traffic Interchange Study Scoping and Alternatives Public Meeting

- All participants have been muted to avoid background noise.
- This meeting is being recorded.
- Technical difficulties? Call Zoom at 888.799.9666
- Following the meeting presentation, we will take questions and comments.
- To turn on closed captioning select that option from the menu



# Spanish Language Access Instructions

1

Open “Interpretation” Menu | **Abre el menú “interpretación”.**

## On a desktop or laptop En una computadora o una computadora portátil

Hover at the bottom of the screen to see the toolbar and click on the **Interpretation** icon toolbar.

Ponga el cursor en la parte de abajo de la pantalla para ver la barra de herramientas y haga clic en el ícono que dice **“Interpretation”**.

## On an iPad En un iPad

Press the three dots on the upper right corner to access the menu and select Language **Interpretation**.

Presione los tres puntos del menú arriba a la derecha y seleccione **“Language Interpretation”**.

## On an iPhone En un iPhone

Press the three dots (**More**) on the lower right corner to access the menu.

Presione los tres puntos del menú **“More”** abajo a la derecha.

2

Select your preferred language. | **Seleccione el idioma de su preferencia.**

3

If you don’t want to hear the original language in the background, click on Mute Original Audio.

**Si no quiere escuchar el idioma original en el fondo, haga clic en “Mute Original Audio”.**

# ADOT's Nondiscrimination Notice to the Public

Pursuant to Title VI of the Civil Rights Act of 1964, the Americans with Disabilities Act (ADA) and other nondiscrimination laws and authorities, the Arizona Department of Transportation (ADOT) does not discriminate on the basis of race, color, national origin, sex, age, or disability. Persons that require a reasonable accommodation based on language or disability should contact Marcy McMacken at 855.712.8530 or [mmcmacken@azdot.gov](mailto:mmcmacken@azdot.gov). Requests should be made as early as possible to ensure the State has an opportunity to address the accommodation.

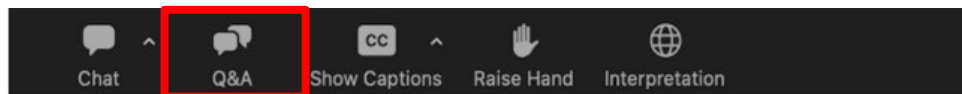
De acuerdo con el Título VI de la Ley de Derechos Civiles de 1964, la Ley de Estadounidenses con Discapacidades (ADA por sus siglas en inglés) y otras normas y leyes antidiscriminatorias, el Departamento de Transporte de Arizona (ADOT) no discrimina por motivos de raza, color, origen nacional, sexo, edad o discapacidad. Las personas que requieran asistencia (dentro de lo razonable) ya sea por el idioma o discapacidad deben ponerse en contacto con Marcy McMacken al 855.712.8530 o por correo electrónico al [mmcmacken@azdot.gov](mailto:mmcmacken@azdot.gov). Las solicitudes deben hacerse lo más antes posible para asegurar que el Estado tenga la oportunidad de hacer los arreglos necesarios.

# Agenda

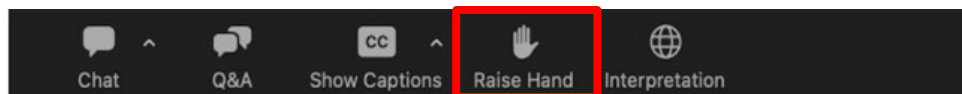
- I-10 Wild Horse Pass Corridor Update
- Study Schedule
- Environmental Study Area
- NEPA
- Purpose and Need for Study
- Alternatives
- Funding
- Questions

## How to Submit Questions

- Option 1: Please click on the Q&A icon to submit any questions you have during this presentation.



- Option 2: Please click on the Raise Hand icon during the Question part of the presentation.



# Presenters

## **Trent Kelso, PE**

ADOT I-10 Corridor Manager  
tkelso@azdot.gov

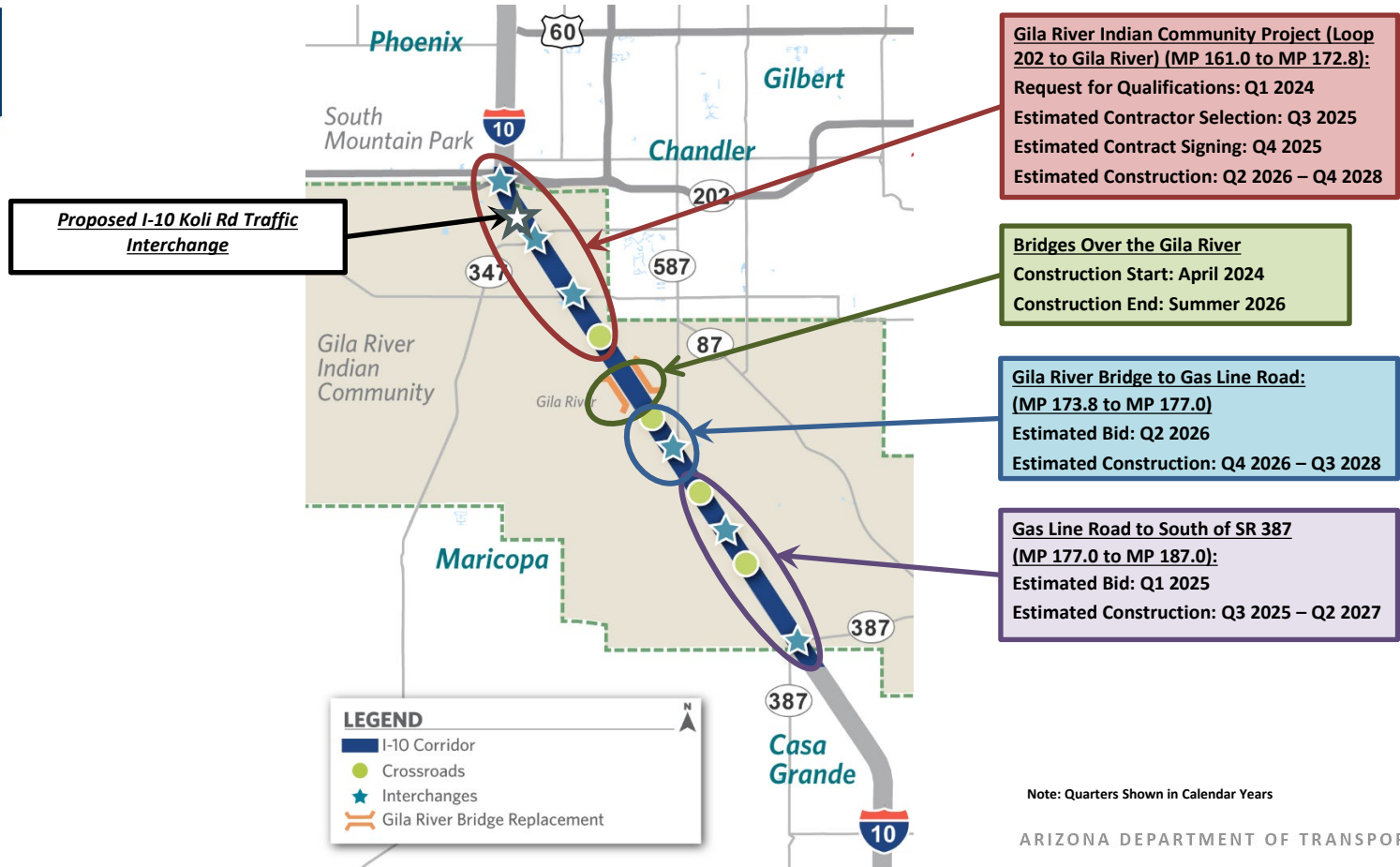
## **Carmelo Acevedo, PE, JD**

ADOT Project Manager  
Major Projects and Alternative Delivery  
cacevedo2@azdot.gov



# I-10 Wild Horse Pass Corridor – Project Update

ADOT



# Purpose of Today's Meeting

Today's meeting provides the opportunity for you, the public, to educate us, the study team.

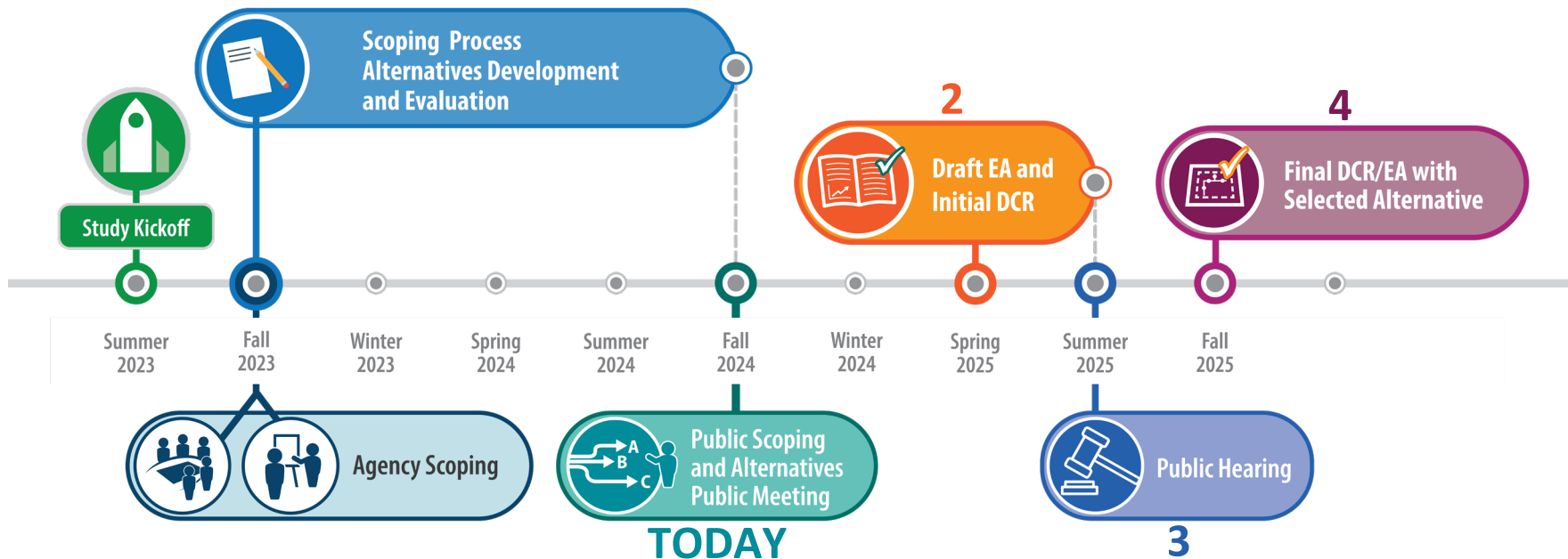
This meeting will:

- Present the I-10/Koli Road Traffic Interchange study, its objectives, and schedule.
- Obtain your feedback on opportunities, issues, and concerns.
- Solicit your input on the alternatives.

**We don't want to overlook anything.**

This input will help ADOT, the Gila River Indian Community, and Maricopa Association of Governments select a Preferred Alternative for this section of I-10 and Koli Road.

# Study Schedule



Key: EA - Environmental Assessment | DCR - Design Concept Report

## Environmental Study Area

- Located on I-10 between Wild Horse Pass Boulevard and SR 347/Queen Creek Road.
  - One half mile to the east of I-10.
  - West to approximately Maricopa Road.
- In Maricopa County and within the Gila River Indian Community.



## Federal Environmental Law Requirements = NEPA

- The National Environmental Policy Act (NEPA) requires agencies to analyze, disclose, avoid, minimize, or mitigate adverse environmental impacts.
- An Environmental Assessment (EA) is being prepared to evaluate potential impacts of the I-10/Koli Road Traffic Interchange project.
- The Federal environmental laws for this project are pursuant to 23 USC 327, Memorandum of Understanding dated June 25, 2024 between FHWA and ADOT.
- Purpose and Need is a legal requirement that presents the justification for the project.

## Purpose and Need for Study



- **Growing area of the Community** - Improved access supports planned growth.



- **Popular destinations** - Gila River Resorts and Casinos – Wild Horse Pass, Sheraton Grand at Wild Horse Pass, Premium Outlets, and Rawhide Western Town.



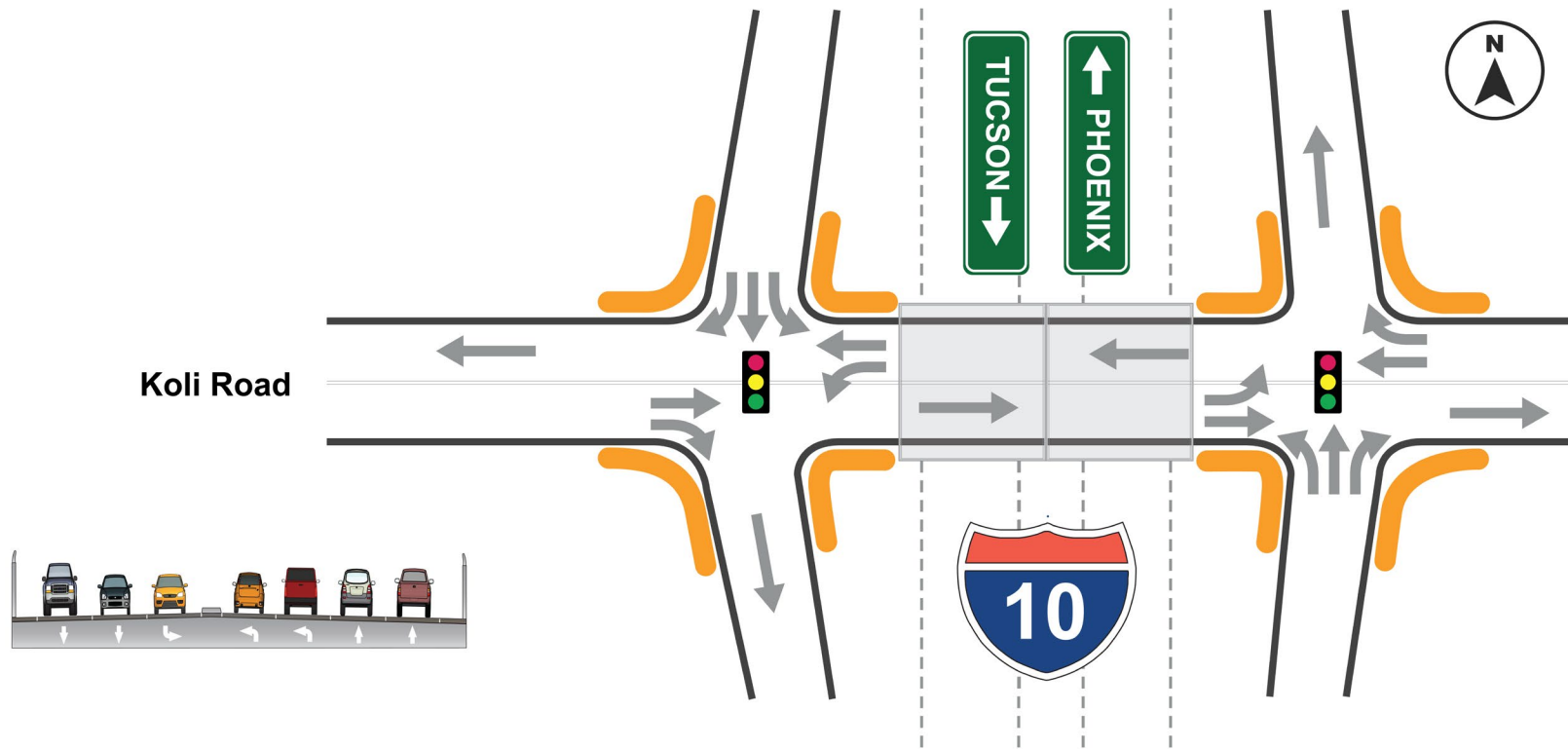
- **The existing TIs are not well-positioned to support future growth** - Access to the Gila River Indian Community at the north (Wild Horse Pass Blvd. and south (SR 347/Queen Creek Rd.)
- **Extensive expansion of the local roadway network** - Includes the extension of Koli Road and the proposed I-10 Koli Road TI.

## Alternative: No Build or If Nothing is Done



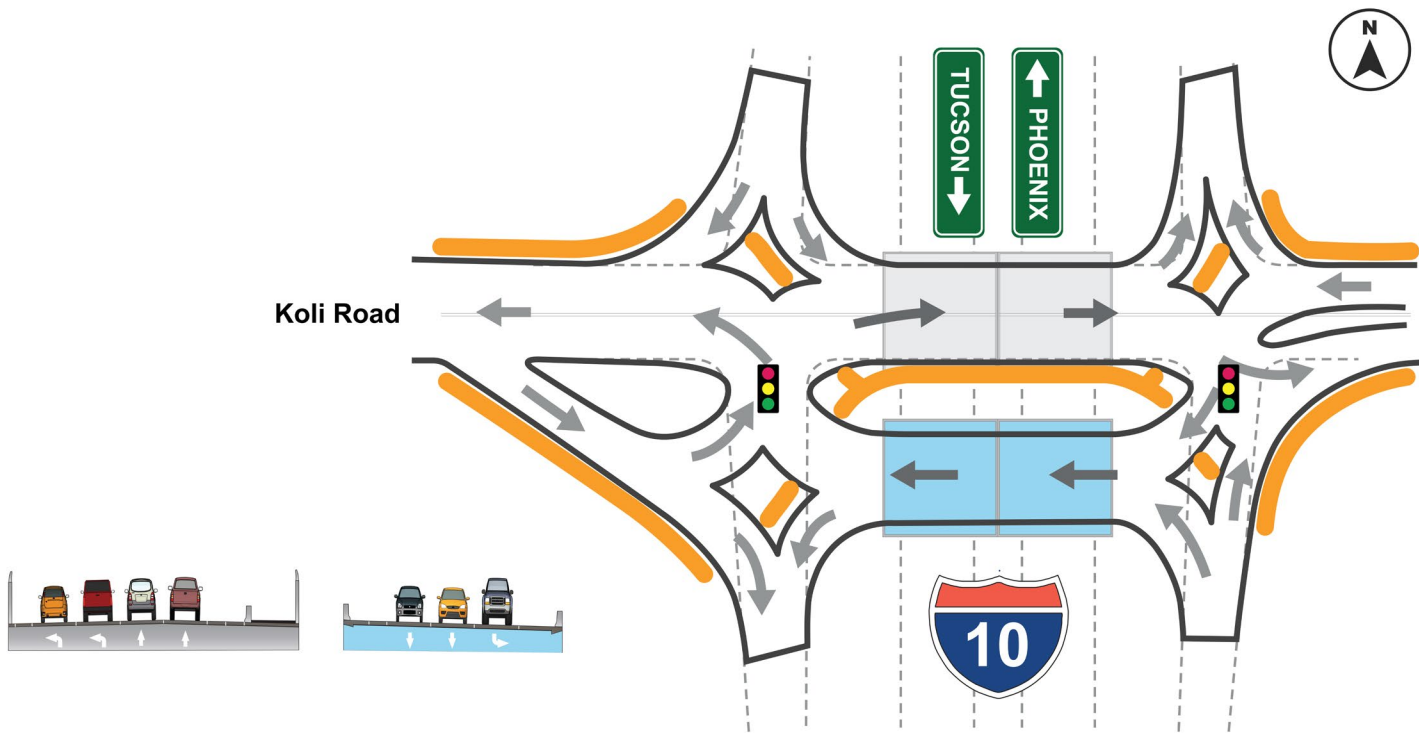
- 2050 baseline condition
- Only corridor maintenance
- No new access from I-10
- No connection between Koli Rd and I-10
- No-Build will be compared with the recommended build alternative that will be identified as part of this study

# Alternative A: Diamond Interchange

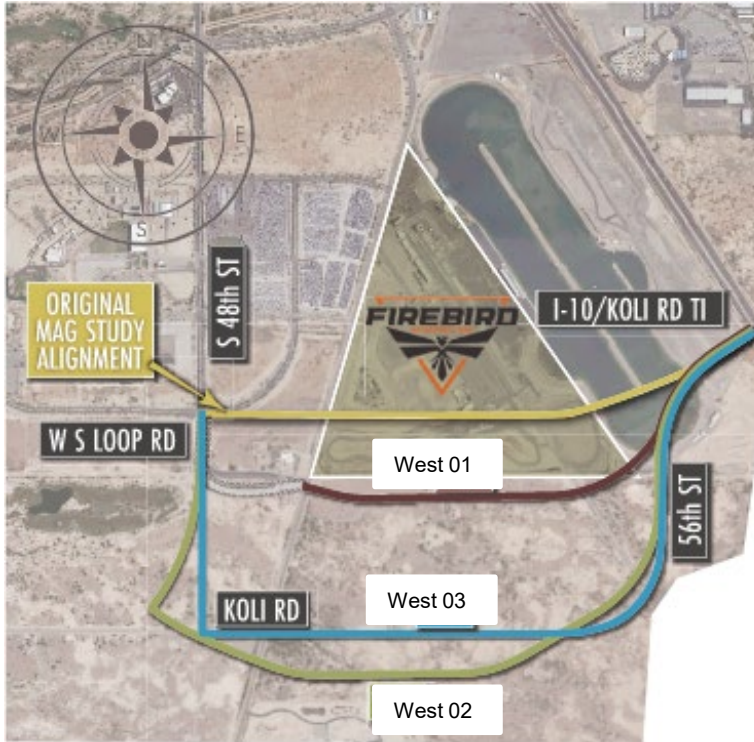




# Alternative B: Diverging Diamond Interchange



## Logical Beginning & End to the Community's Local Road



- Local roadway extensions will be funded and managed by the Gila River Indian Community.
- The area presents the potential construction area in the EA.
- All of the alternatives connect with the proposed I-10/Koli Road TI at the same location.
- They do not have any differentiating impacts to I-10.

# Alternatives Evaluation Matrix Summary

## Environmental



= Most desirable or least impacts



= Average desirability or average impacts



= Least desirable or most impacts

ALTERNATIVES		ENVIRONMENTAL IMPACTS														
		Floodplain	Jurisdictional Waters of the U.S.	Water Resources	Noise	Air Quality	Visual	Hazardous Materials	Land Use (Existing and Future)	Local Businesses (including billboards)	Local Communities (environmental justice, residential impacts)	Biological Resources	Prime and Unique Farmlands (soils not just active farming)	Archaeological Resources	Traditional Cultural Properties (TCPs)	Section 4(f) and Section 6(f)
Koli Rd Interchange Alternatives																
Interchange Configuration	No Build	○	○	○	○	◐	○	○	○	○	◐	○	○	○	○	○
	Diverging Diamond Interchange (DDI)	○	○	○	○	○	◐	○	◐	◐	○	○	◐	○	○	○
	Diamond Interchange	○	○	○	○	○	◐	○	◐	◐	○	○	◐	○	○	○

The environmental impacts are nearly the same for both build alternatives.

# Alternatives Evaluation Matrix

## Right of Way

ALTERNATIVES			COST (Excluding right of way and easements)		RIGHT OF WAY (TRIBAL LAND)		RIGHT OF WAY (ALLOTMENT LAND)	
			Design and Construction Cost (Millions)	Utility Cost (3rd Party) (Millions)	New Long-Term Freeway Easement (Acres)	Billboard Relocations	New Long-Term Freeway Easement (Acres)	Billboard Relocations
Koli Rd Interchange Alternatives								
Interchange Alternatives	K1	No Build	\$0.0	\$0.0	0	0	0	0
	K2	Diverging Diamond Interchange (DDI)	\$69.5	\$1.4	0.9	0	34.9 14 parcels would be required to provide new ROW for additional ADOT easement.	3
	K3	Diamond Interchange	\$66.5	\$1.4	0.9	0	33.0 14 parcels would be required to provide new ROW for additional ADOT easement.	3

- No-build alternative** requires no right of way but does not satisfy purpose and need.
- Diamond interchange** requires 33.9 acres of right of way.
- Diverging diamond** requires 35.8 acres of right of way.

# Alternatives Evaluation Matrix Summary

## Engineering

		ENGINEERING IMPACTS											
		Roadway Design Factors	Drainage Considerations	Traffic Operations in 2050	Safety	Compatibility with adjacent land use	Constructability / Maintenance of Traffic During Construction	Utility Considerations	Maintenance / Maintainability	Incident Management	Pedestrian and Cyclist Access	I-10 Mainline Impacts	
ALTERNATIVES													
<div><div></div> = Most desirable or least impact</div> <div><div></div> = Average desirability or average</div> <div><div></div> = Least desirable or most impact</div>													
Koli Rd Interchange Alternatives													
Interchange Configuration	No Build	N/A	<div></div>	<div></div>	<div></div>	<div></div>	<div></div>	<div></div>	<div></div>	<div></div>	N/A	N/A	N/A
	Diverging Diamond Interchange (DDI)	<div></div>	<div></div>	<div></div>	<div></div>	<div></div>	<div></div>	<div></div>	<div></div>	<div></div>	<div></div>	<div></div>	<div></div>
	Diamond Interchange	<div></div>	<div></div>	<div></div>	<div></div>	<div></div>	<div></div>	<div></div>	<div></div>	<div></div>	<div></div>	<div></div>	<div></div>

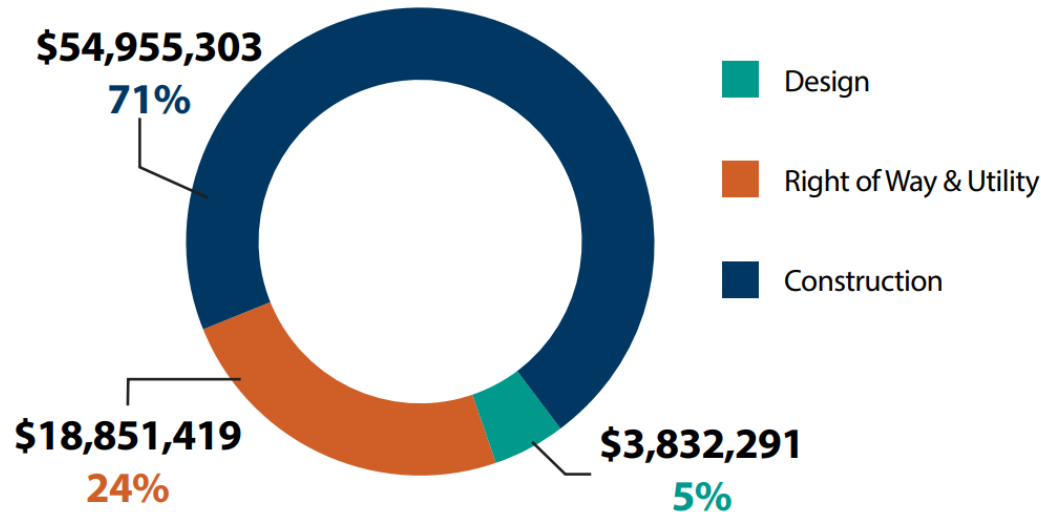
The diamond alternative has the least impacts.

### Summary of Findings:

- No Build** - Least initial cost and right of way. Does not meet the purpose and need.
- Diamond Interchange** - Highest ratings and meets the project purpose and need.
- Diverging Diamond Interchange** - Meets purpose but has more impacts and higher costs.

# Anticipated Funding

If a Build Alternative is selected, the Maricopa Association of Governments will fund \$77.6M for Right of Way, Utility Relocation and Construction of the Koli Road Traffic Interchange in the anticipated year of expenditure, 2025.



# Summary

## Purpose



The public scoping and alternatives process provides the opportunity for the public to educate the study team about the I-10/Koli Road Traffic Interchange study area, as well as share concerns about modifying I-10 to incorporate a traffic interchange at approximately Koli Road.



## TI Alternatives

- No Build
- Diamond Interchange
- Diverging Diamond Interchange

## Koli Road Logical Termini Alternatives

- Alignment West 01
- Alignment West 02
- Alignment West 03



## Next Steps

The public is invited to submit comments by November 8, 2024. This input will help ADOT, the Gila River Indian Community, and Maricopa Association of Governments select a Preferred Alternative for this section of I-10 and Koli Road.

# Provide Your Comments

You may submit comments throughout the comment period by November 8, 2024, in any of the following ways:



Visit the website and leave a comment:  
[azdot.gov/koliroad](https://azdot.gov/koliroad)



Email: [koliroad@azdot.gov](mailto:koliroad@azdot.gov)



Call bilingual project  
information line: 855.712.8530

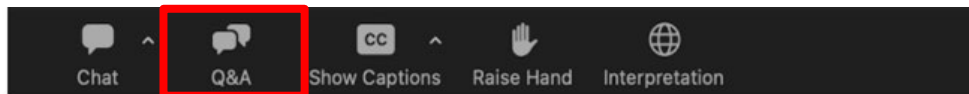


USPS Mail:  
I-10/Koli Road Traffic Interchange  
Study Office  
6515 South Rural Road, Suite 107  
Tempe, AZ 85283

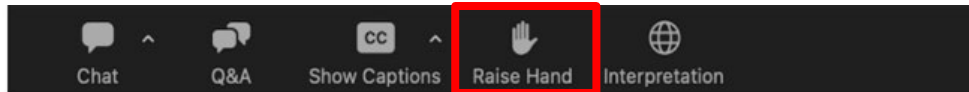


## How to Submit Questions

- Option 1: Please click on the Q&A icon to submit any questions you have during this presentation.



- Option 2: Please click on the Raise Hand icon during the Question part of the presentation.



# Thank you for attending!

## Stay Informed about the I-10/Koli Road Traffic Interchange Study



**Visit the website:** [azdot.gov/koliroad](https://azdot.gov/koliroad)



**Call** bilingual project information line: 855.712.8530



**Email** the project team: [koliroad@azdot.gov](mailto:koliroad@azdot.gov)